

# HAYSTAQ DNA

## South Dakota

<b>Overview</b>	<b>2</b>
<b>Congressional</b>	<b>2</b>
<b>State Legislature</b>	<b>3</b>
Total Population	3
Population by Race and Ethnicity	6
Aberdeen	11
Brookings	17
Rapid City	23
Sioux Falls	29
<b>Variable Definitions</b>	<b>39</b>

## Overview

South Dakota added 72,490 people to their population, an increase of 8.90% from the last decade. South Dakota saw a majority of its population growth occur in the southeast by Sioux Falls (i.e. District 011) and in the west by Rapid City (i.e. District 033). With declines in the rural central counties, South Dakota aligns with the general national trend of movement from rural to urban/suburban areas.

The White population remained stagnant over the decade, thus not in accordance with its national patterns of decline. The White population declined in most districts, but grew at a similar rate to other communities around Rapid City and Sioux Falls. The *overall share* of the population is now 79.58% compared to 84.69% in the 2010 Census.

The American Indian and Alaska Native population increased by 7.37% over the decade across the state except for the southwest in District 003 and District 008 in the east. The *overall share* of the population is now 8.41% compared to 8.53% in the 2010 Census.

The Latino population grew by 75.15% over the decade across all areas of the state, though increases were concentrated slightly more to the east. Significant declines were seen in District 28A. The *overall share* of the population is now 4.37% compared to 2.72% in the 2010 Census.

Over the decade, the African American community grew by 75.13% across the state, though major declines occurred in Districts 019 and 26A. Interestingly, a significant decline of 14.50% also occurred near Rapid City in District 33. The *overall share* of the population increased to 1.97% from 1.22% in the 2010 Census.

The Asian population increased by 76.51% over the decade across the state, though most significantly around Aberdeen, Rapid City, and Sioux Falls. Considerable decreases were seen in Districts 004 and 019. The *overall share* of the population is now 1.50% compared to 0.93% in the 2010 Census.

## Congressional

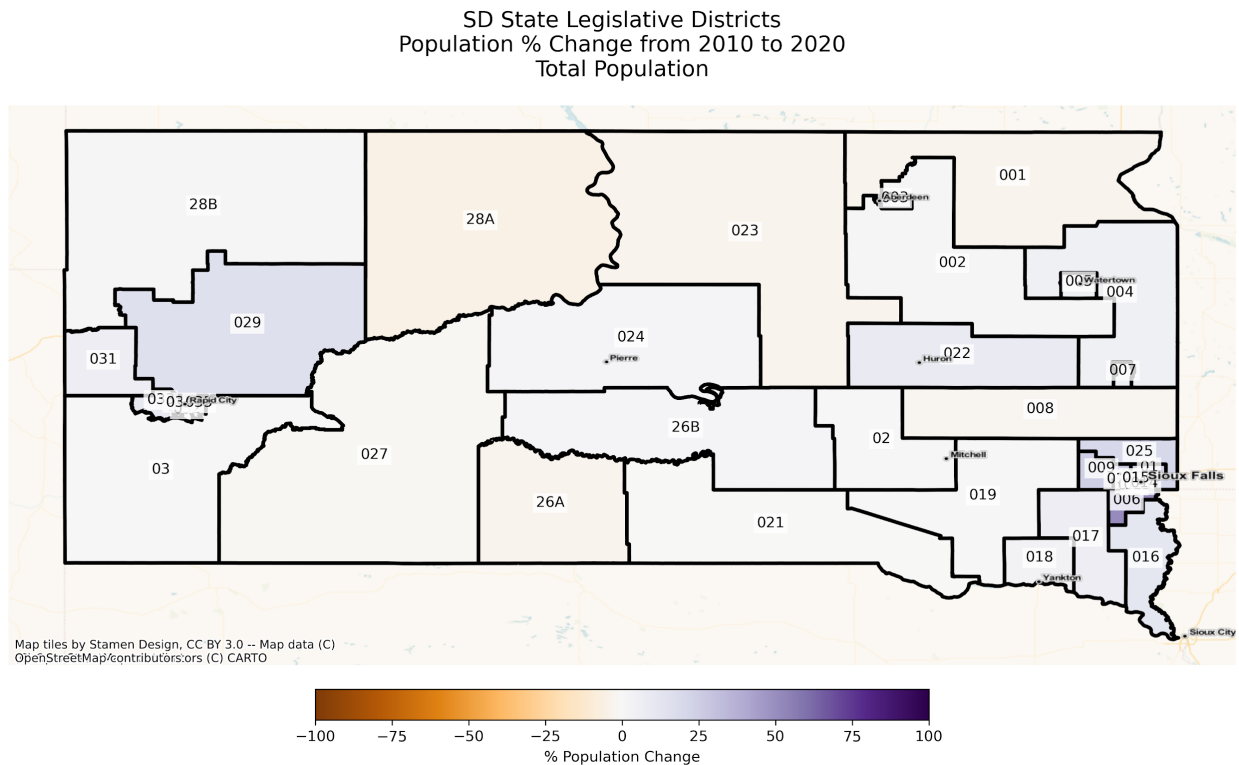
South Dakota has one at-large congressional district.

# State Legislature

The charts below display the percent change in population from 2010 to 2020 for the listed group. Please note that the color bars are fixed to be from -100% to 100% and these maps are displayed in brown to purple. If the percent change in population was outside of this range, the color scheme changes to red to green to indicate a change.

South Dakota shares the same districts for its State Senate and State House.

## Total Population



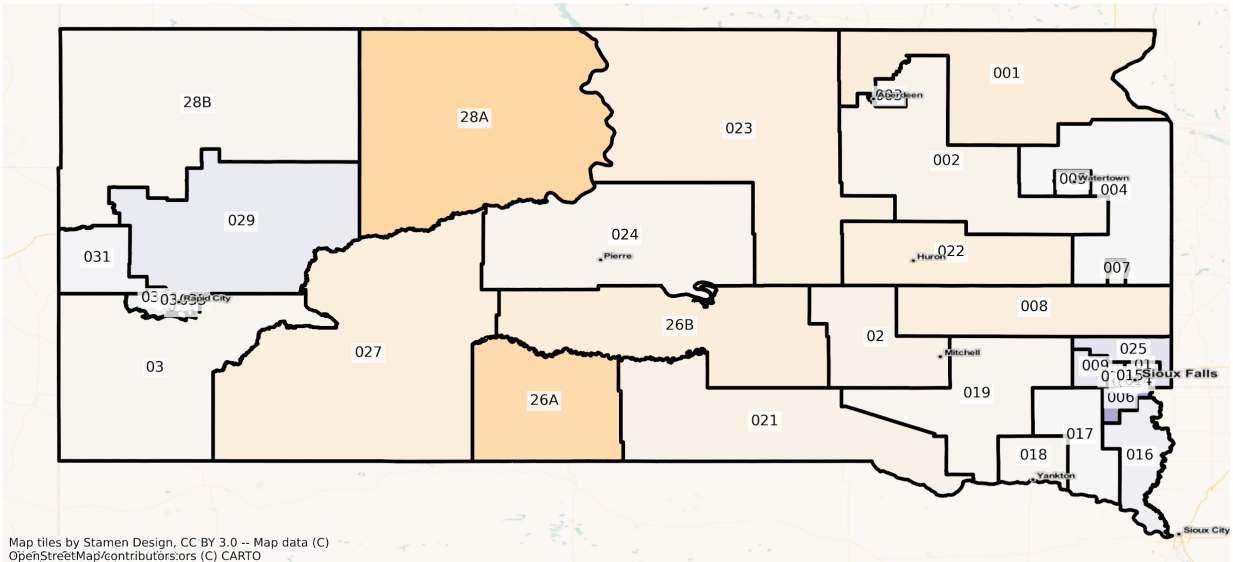
Total Population from 2010 to 2020 at the State Senate District Level

DISTRICT	Total Population 2010	Total Population 2020	Total Population % Change
1	23984	23193	-3.30%
2	24129	24405	1.14%
3	24334	26506	8.93%
4	23269	24391	4.82%
5	23721	24953	5.19%
6	23119	34943	51.14%
7	23922	25207	5.37%
8	22430	22023	-1.81%
9	23782	29707	24.91%
10	23252	28399	22.14%
11	22784	29974	31.56%
12	22206	27504	23.86%
13	22432	25185	12.27%
14	22980	27628	20.23%
15	22472	22868	1.76%
16	22453	24967	11.20%
17	22211	23640	6.43%
18	22438	23310	3.89%
19	22990	23084	0.41%
20	24285	24366	0.33%
21	22418	22315	-0.46%
22	22546	24336	7.94%
23	22166	21425	-3.34%
24	23174	23566	1.69%
25	23212	28011	20.67%
26A	11660	11237	-3.63%

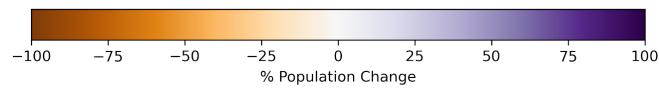
26B	11535	11717	1.58%
27	22512	22303	-0.93%
28A	12152	11548	-4.97%
28B	12195	12324	1.06%
29	23992	27790	15.83%
30	24366	24497	0.54%
31	24106	25781	6.95%
32	24287	25606	5.43%
33	22800	25071	9.96%
34	23598	24845	5.28%
35	24265	28042	15.57%

# Population by Race and Ethnicity

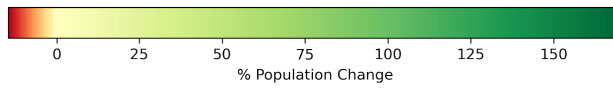
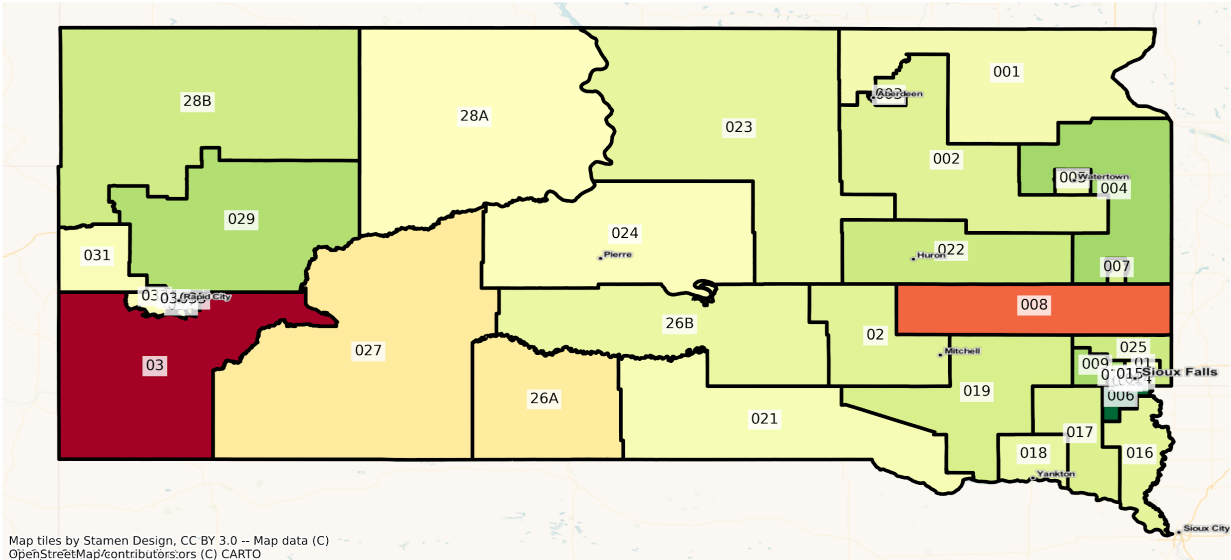
SD State Legislative Districts  
Population % Change from 2010 to 2020  
Ethnicity: Not Latino White alone



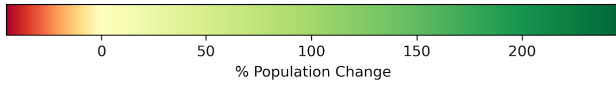
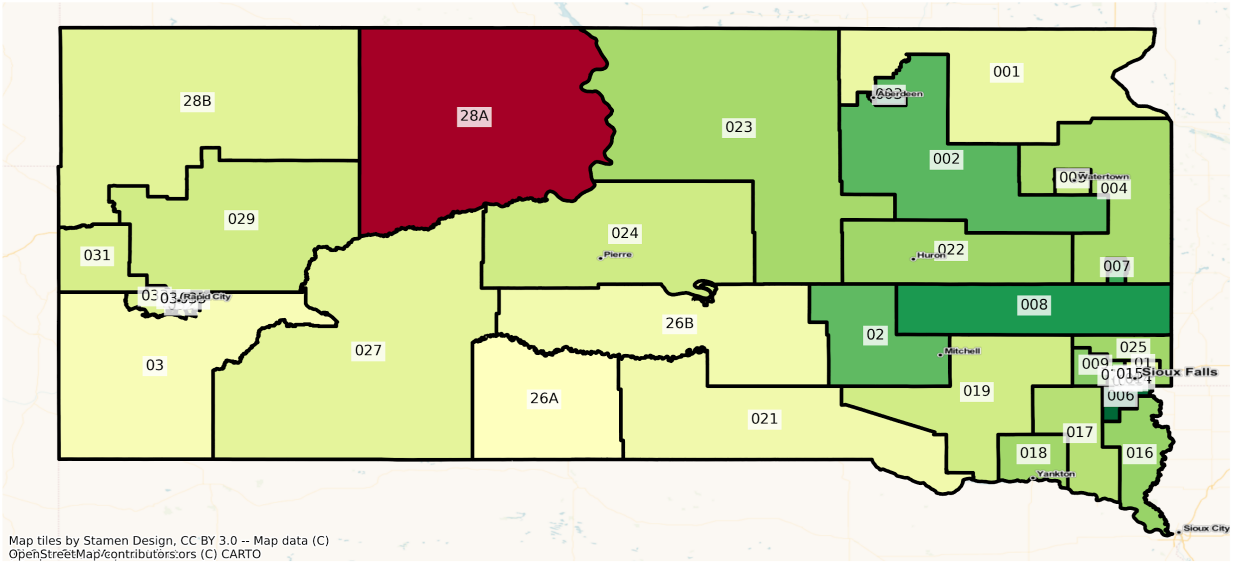
Map tiles by Stamen Design, CC BY 3.0 -- Map data (C) OpenStreetMap/contributors/ors (C) CARTO



SD State Legislative Districts  
Population % Change from 2010 to 2020  
Ethnicity: Not Latino American Indian and Alaska Native alone

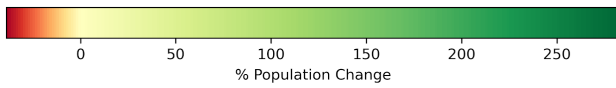
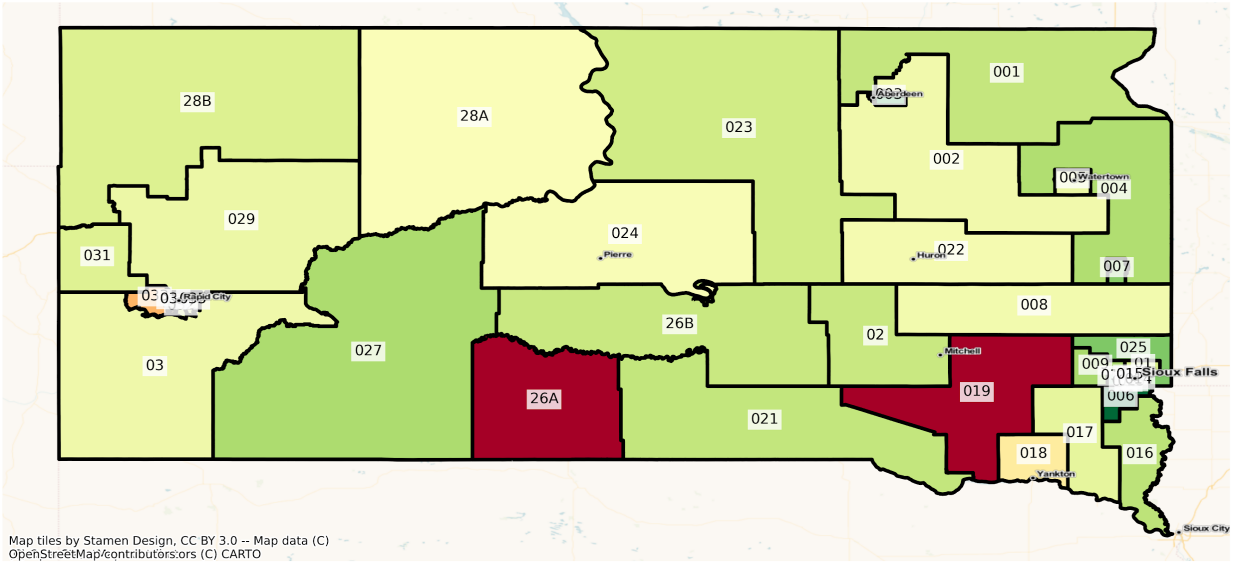


SD State Legislative Districts  
Population % Change from 2010 to 2020  
Ethnicity: Hispanic or Latino

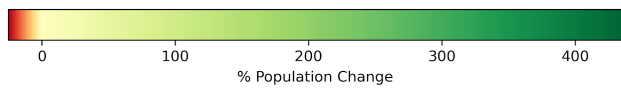
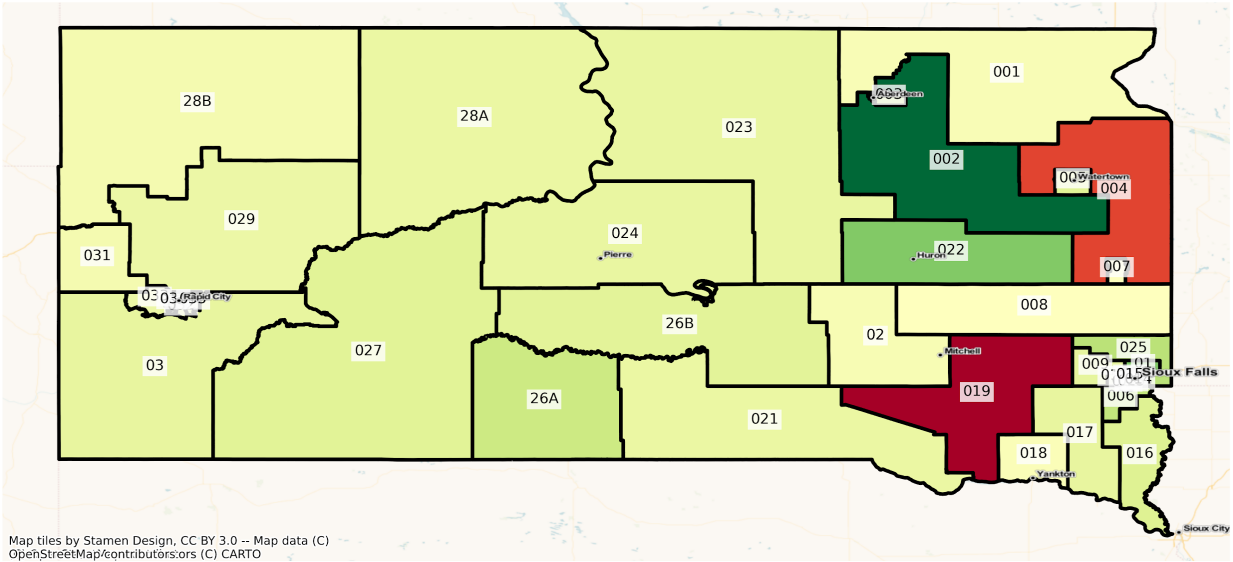




SD State Legislative Districts  
Population % Change from 2010 to 2020  
Ethnicity: Not Latino African American alone

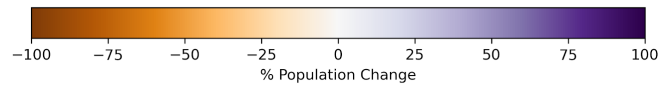
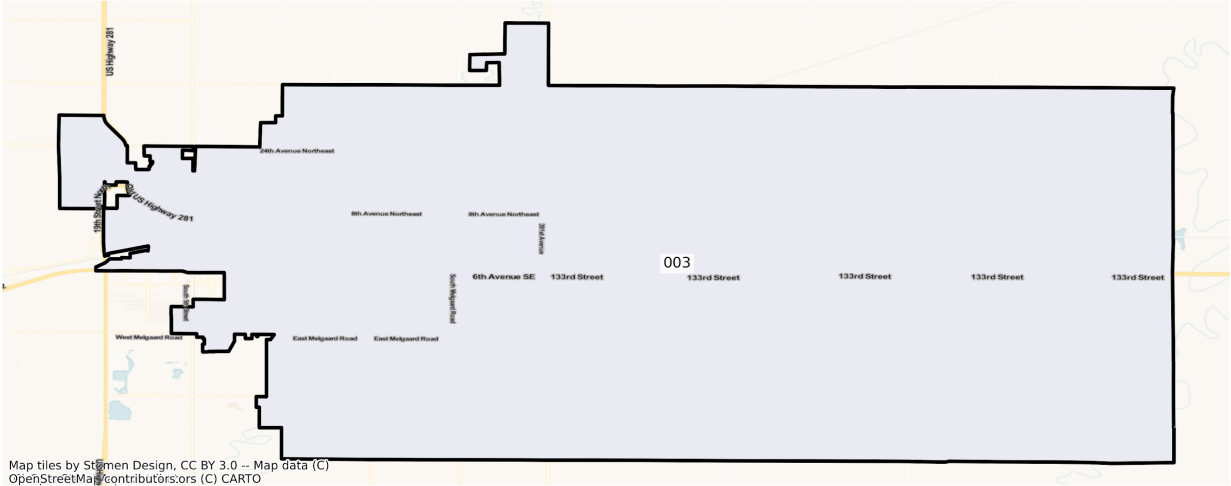


SD State Legislative Districts  
Population % Change from 2010 to 2020  
Ethnicity: Not Latino Asian alone

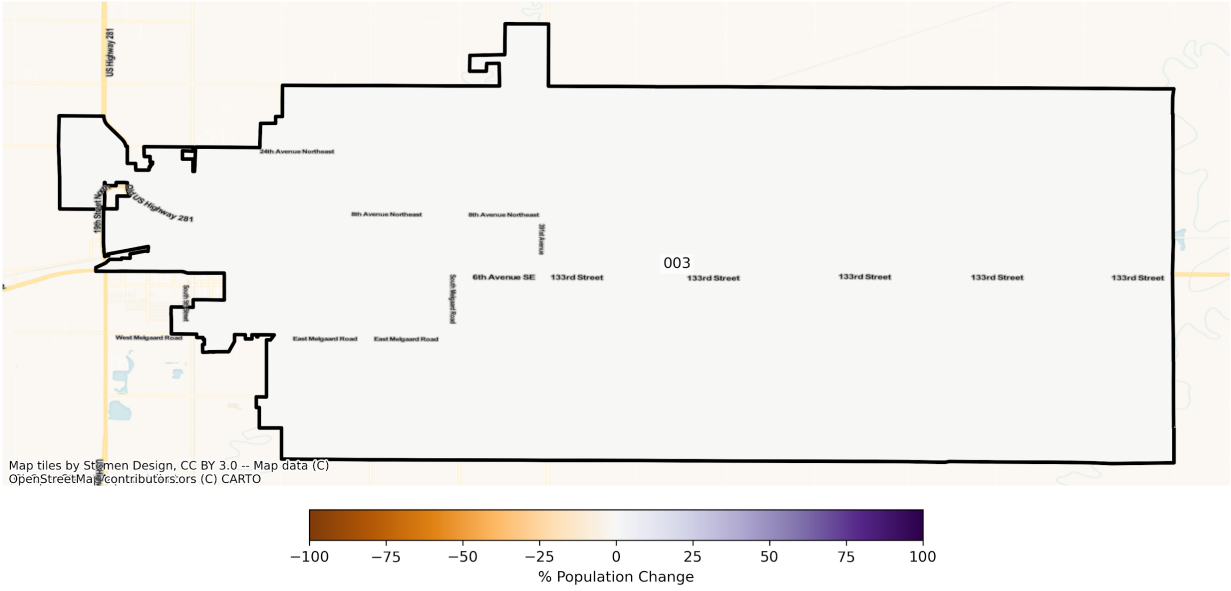


# Aberdeen

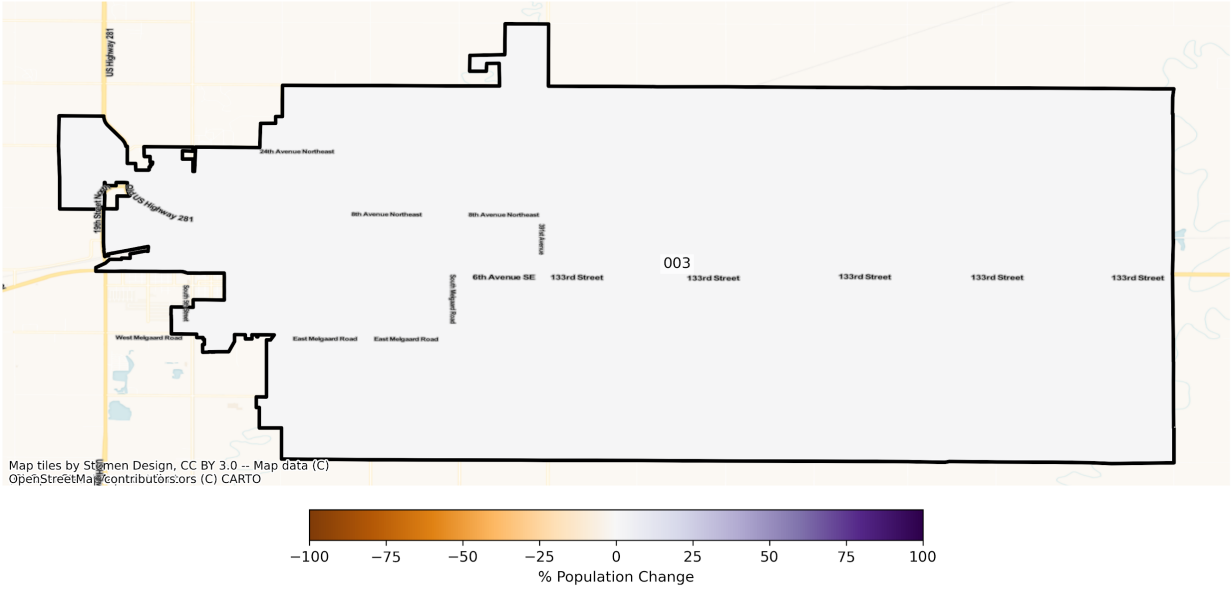
SD Aberdeen State Legislative Districts  
Population % Change from 2010 to 2020  
Total Population



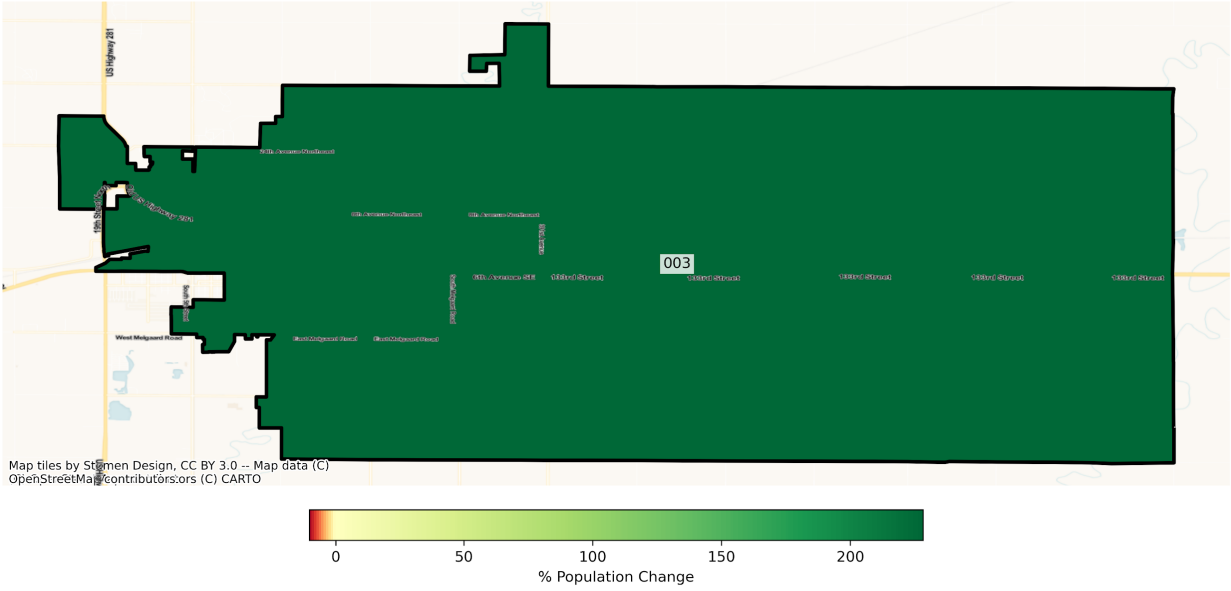
SD Aberdeen State Legislative Districts  
Population % Change from 2010 to 2020  
Ethnicity: Not Latino White alone



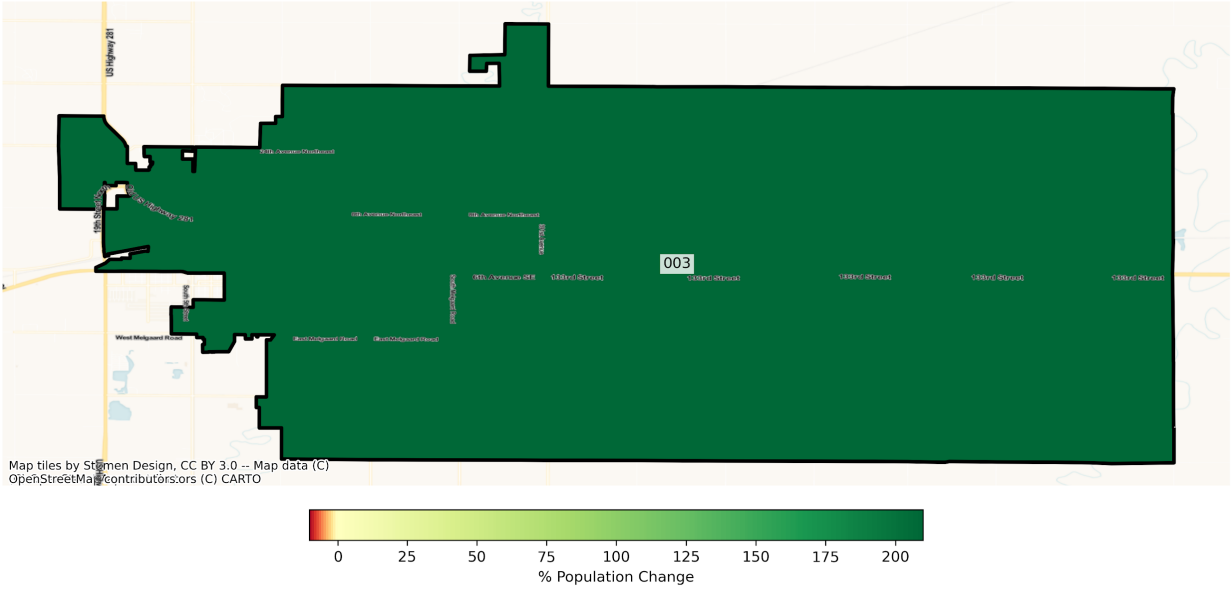
SD Aberdeen State Legislative Districts  
Population % Change from 2010 to 2020  
Ethnicity: Not Latino American Indian and Alaska Native alone



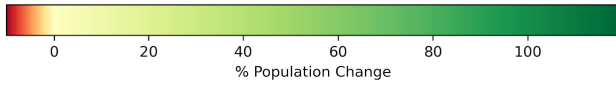
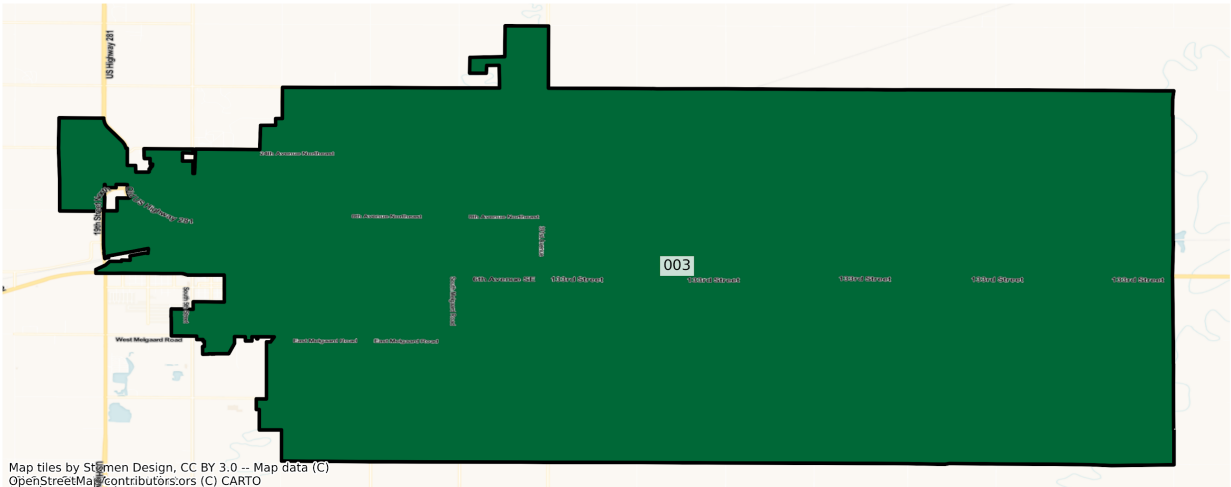
SD Aberdeen State Legislative Districts  
Population % Change from 2010 to 2020  
Ethnicity: Hispanic or Latino



SD Aberdeen State Legislative Districts  
Population % Change from 2010 to 2020  
Ethnicity: Not Latino African American alone



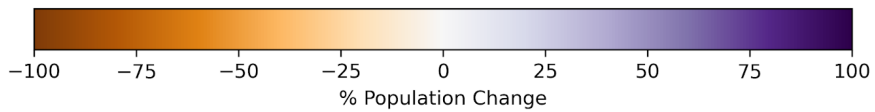
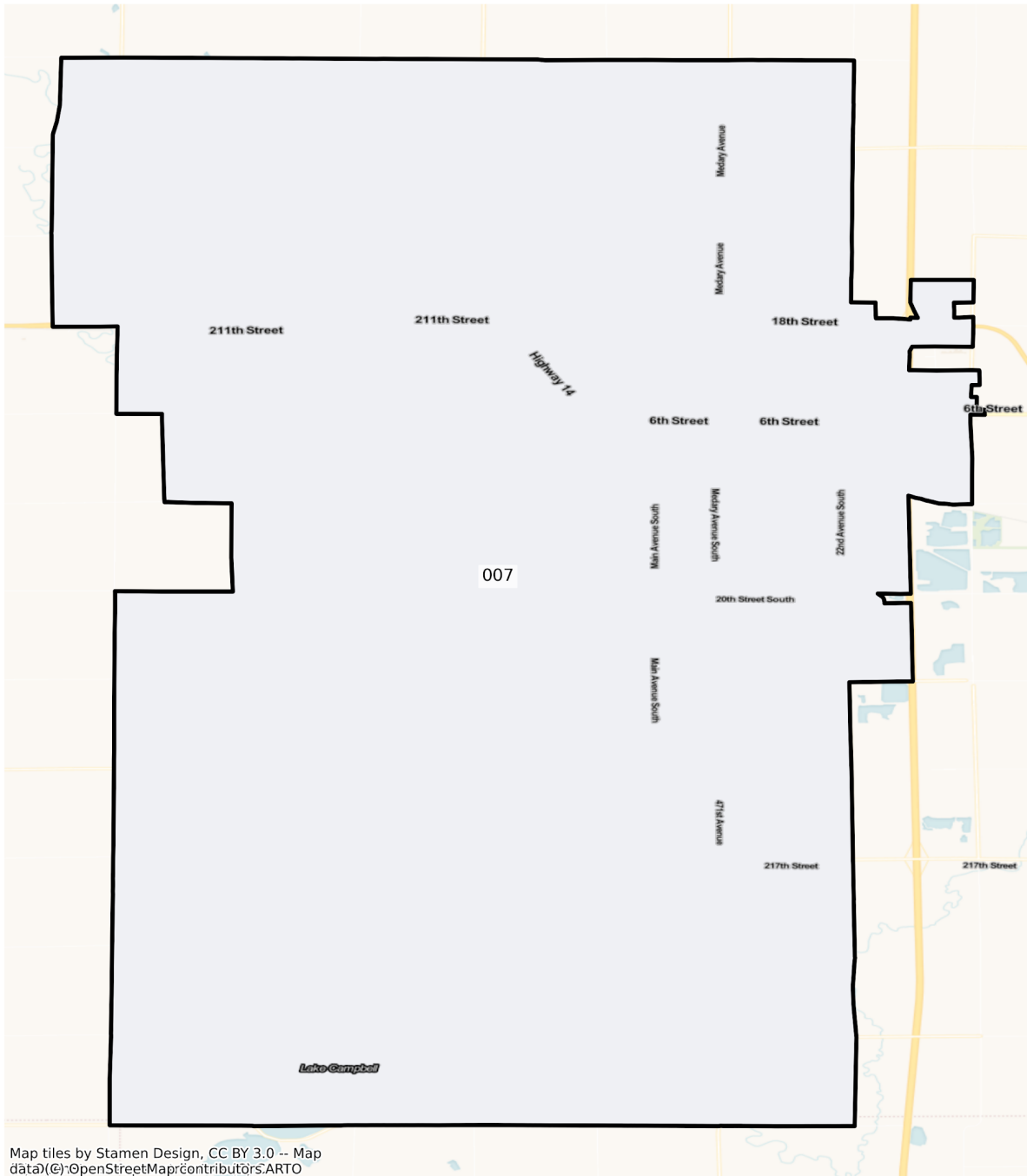
SD Aberdeen State Legislative Districts  
Population % Change from 2010 to 2020  
Ethnicity: Not Latino Asian alone



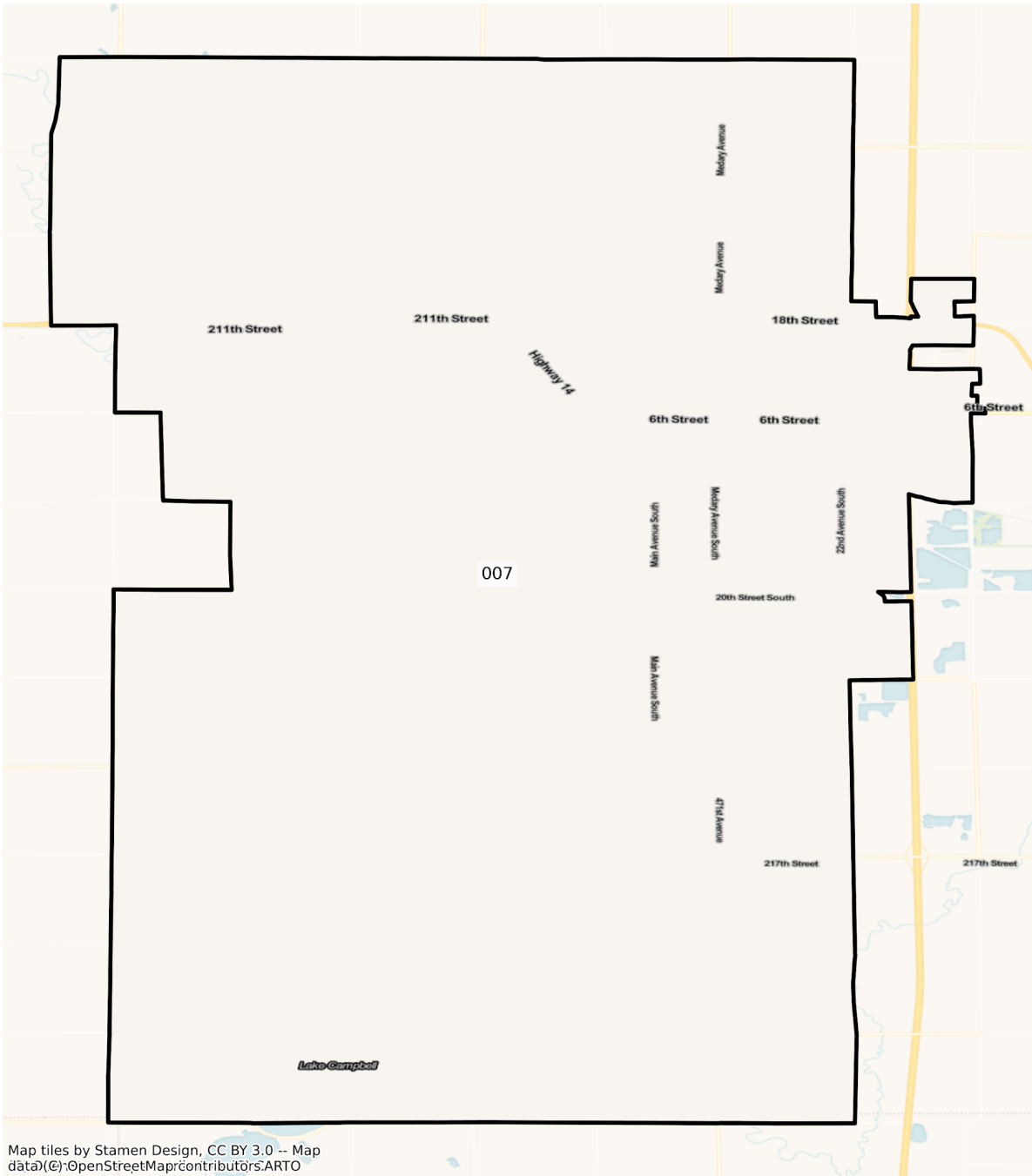


# Brookings

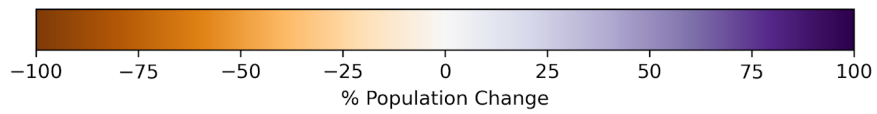
## SD Brookings State Legislative Districts Population % Change from 2010 to 2020 Total Population



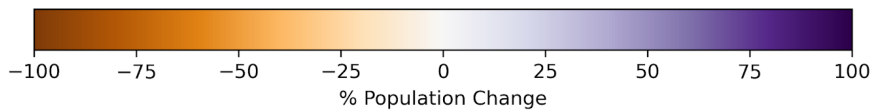
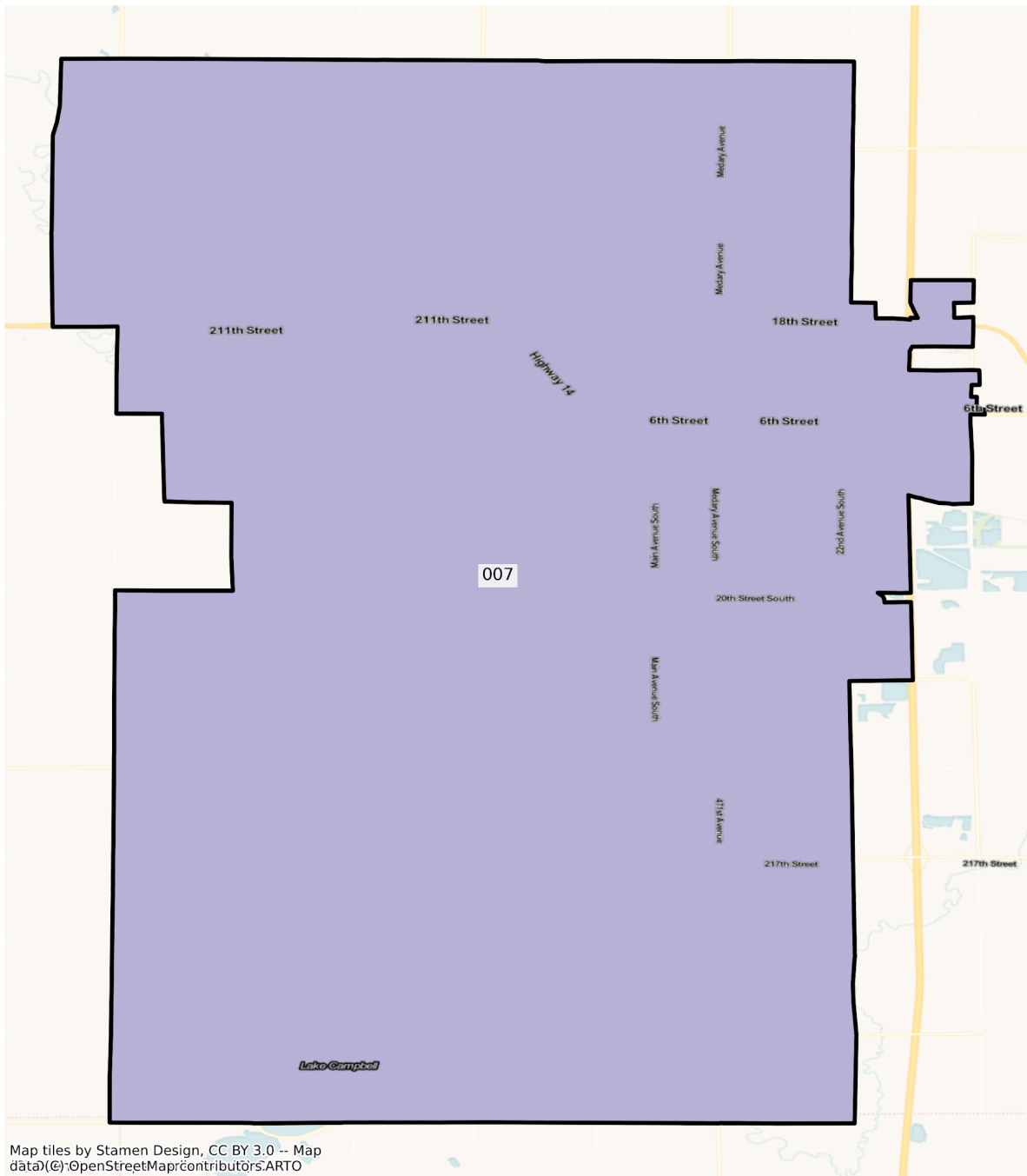
SD Brookings State Legislative Districts  
Population % Change from 2010 to 2020  
Ethnicity: Not Latino White alone



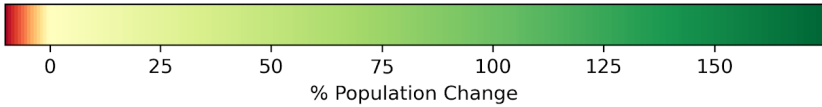
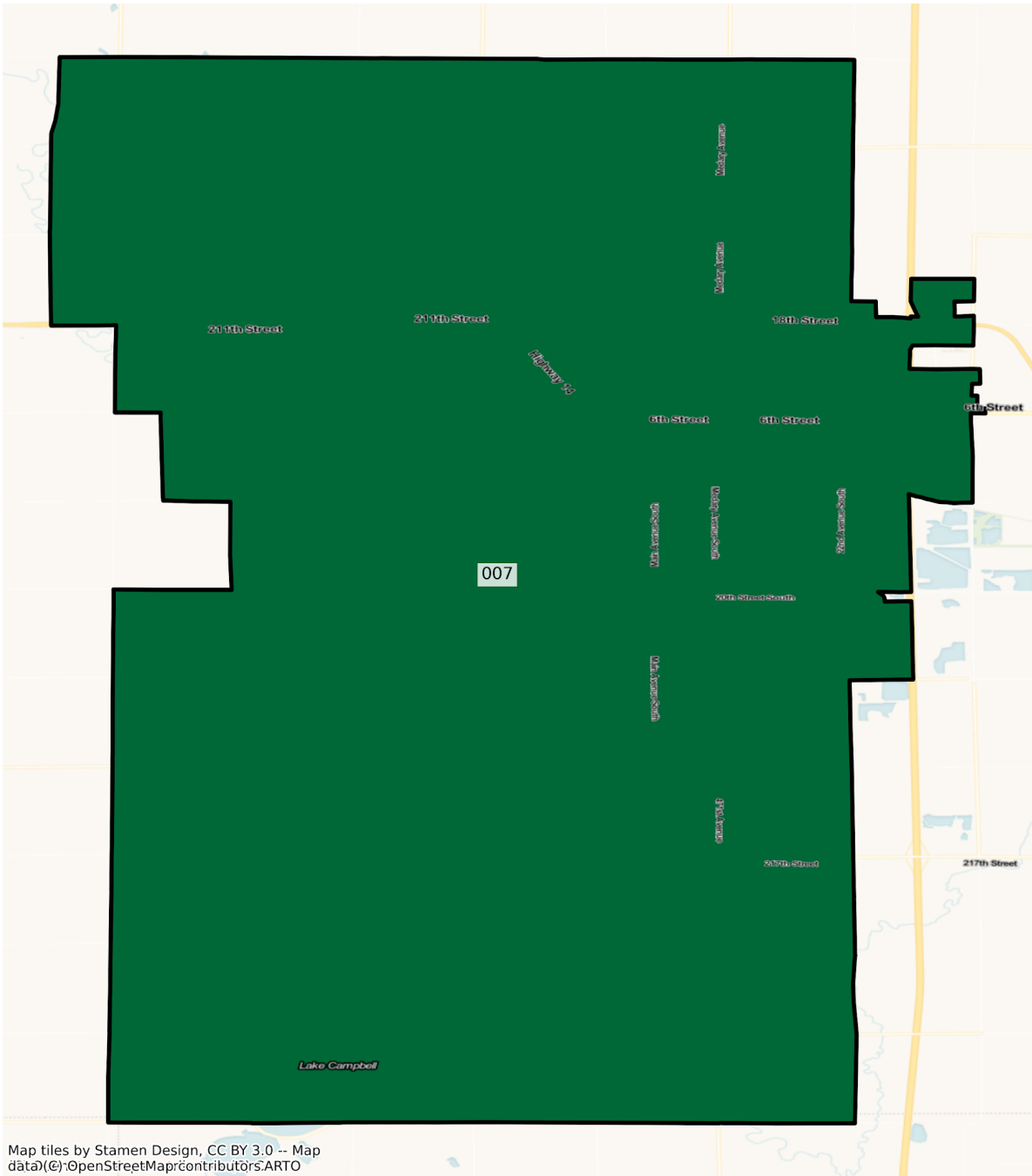
Map tiles by Stamen Design, CC BY 3.0 -- Map data © OpenStreetMap contributors, ARTO



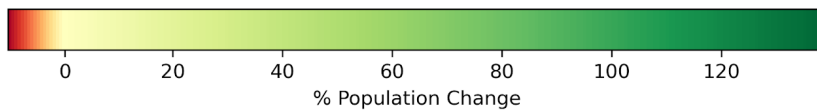
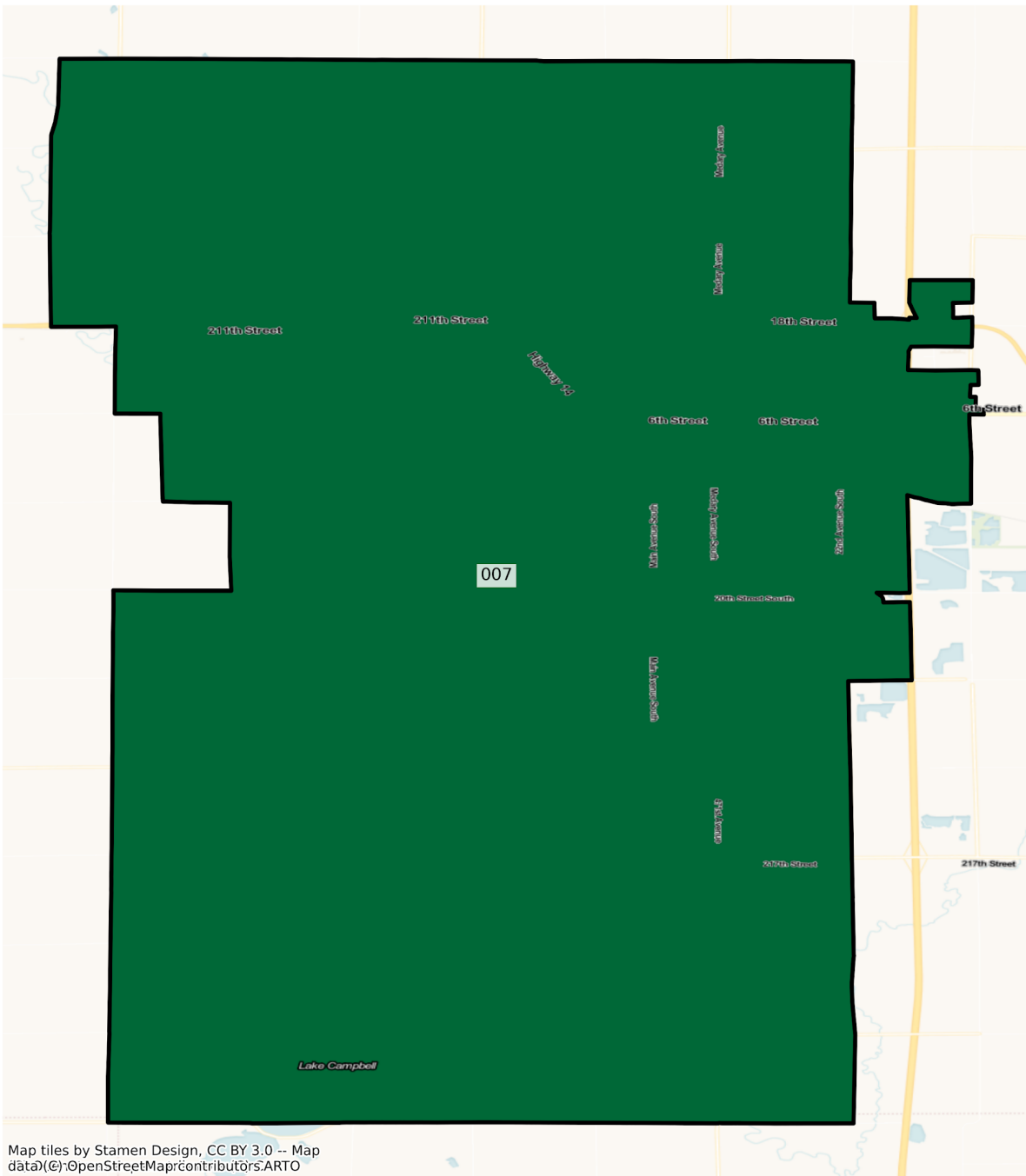
SD Brookings State Legislative Districts  
Population % Change from 2010 to 2020  
Ethnicity: Not Latino American Indian and Alaska Native alone



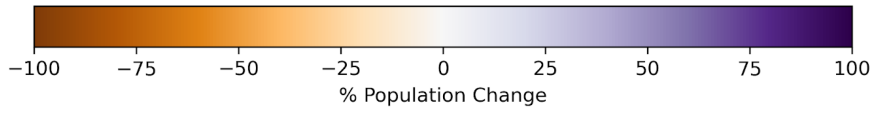
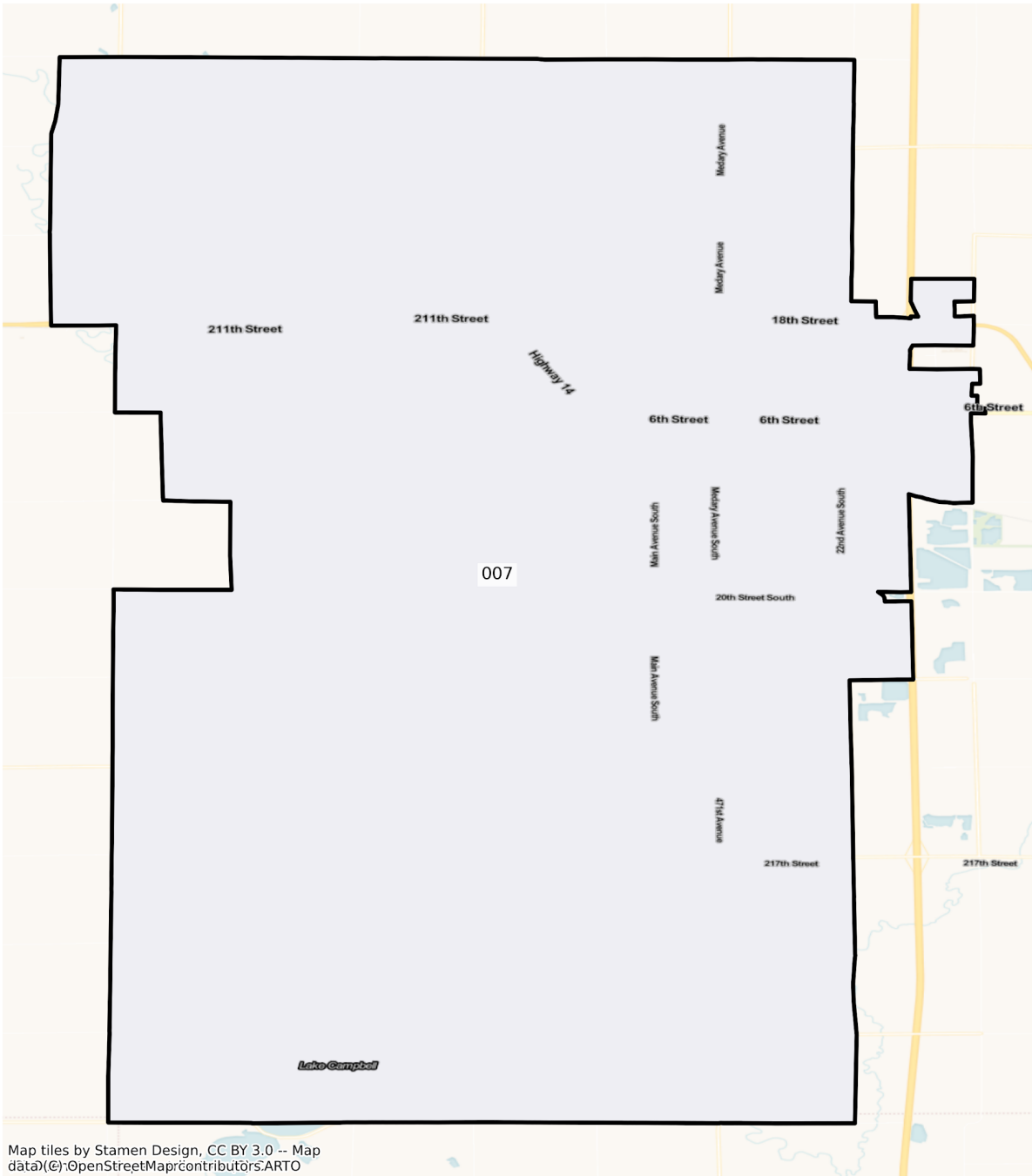
SD Brookings State Legislative Districts  
Population % Change from 2010 to 2020  
Ethnicity: Hispanic or Latino



SD Brookings State Legislative Districts  
Population % Change from 2010 to 2020  
Ethnicity: Not Latino African American alone

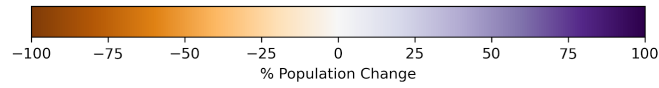
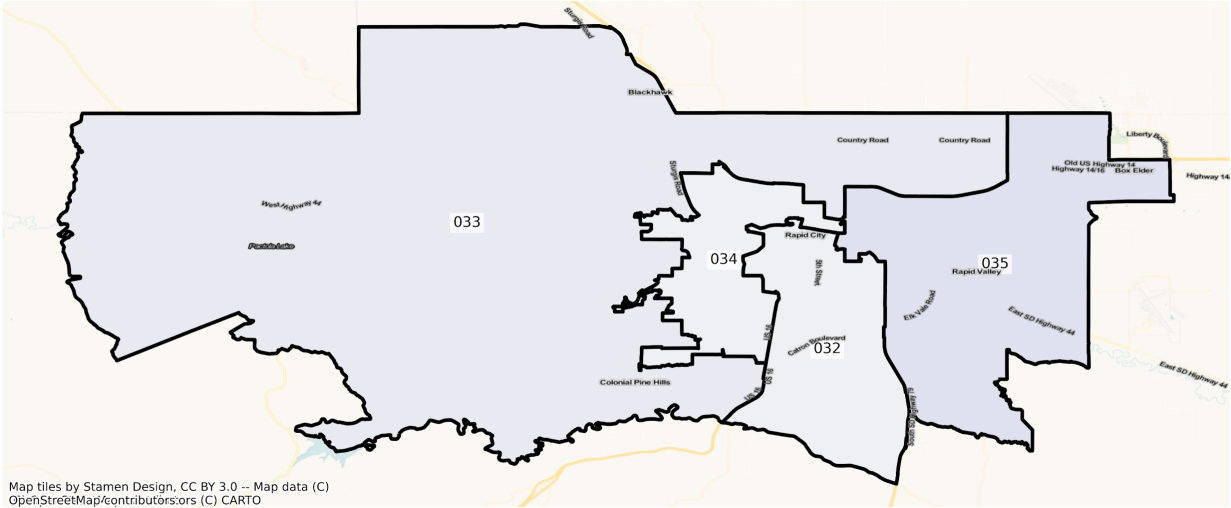


SD Brookings State Legislative Districts  
Population % Change from 2010 to 2020  
Ethnicity: Not Latino Asian alone

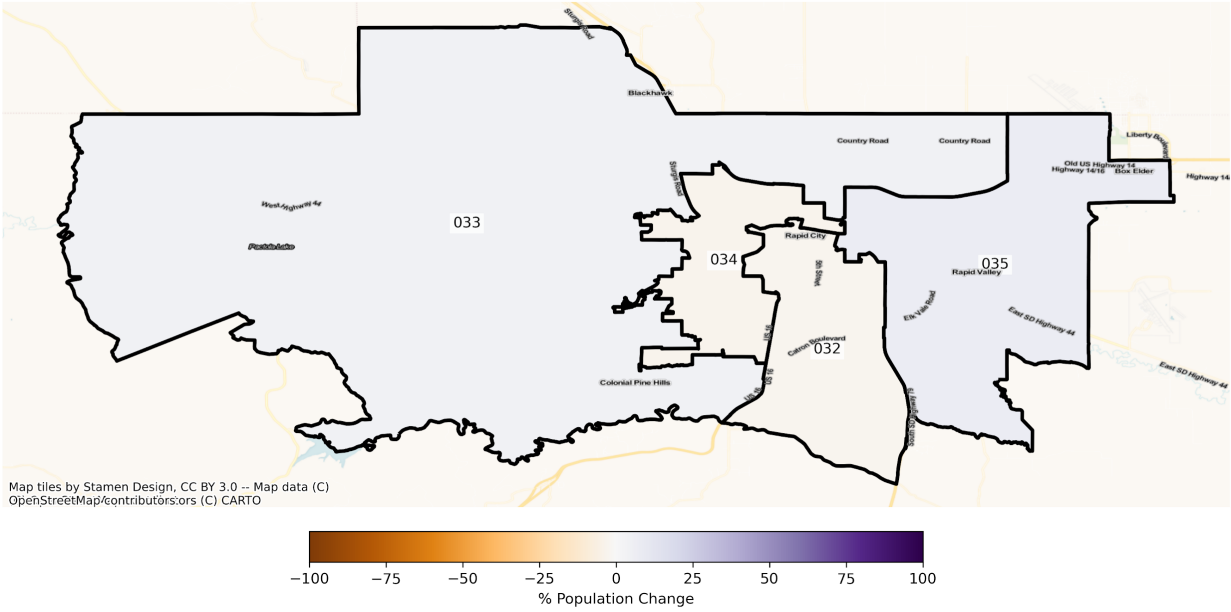


# Rapid City

SD Rapid City State Legislative Districts  
Population % Change from 2010 to 2020  
Total Population

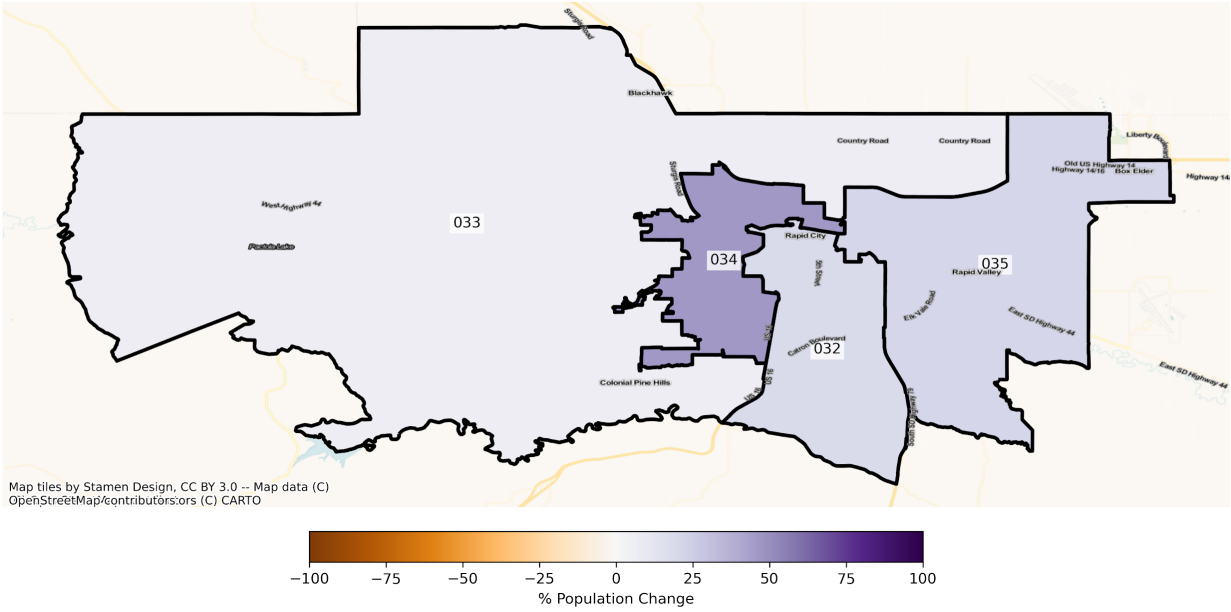


SD Rapid City State Legislative Districts  
Population % Change from 2010 to 2020  
Ethnicity: Not Latino White alone

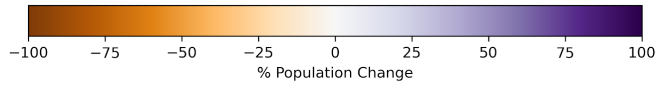
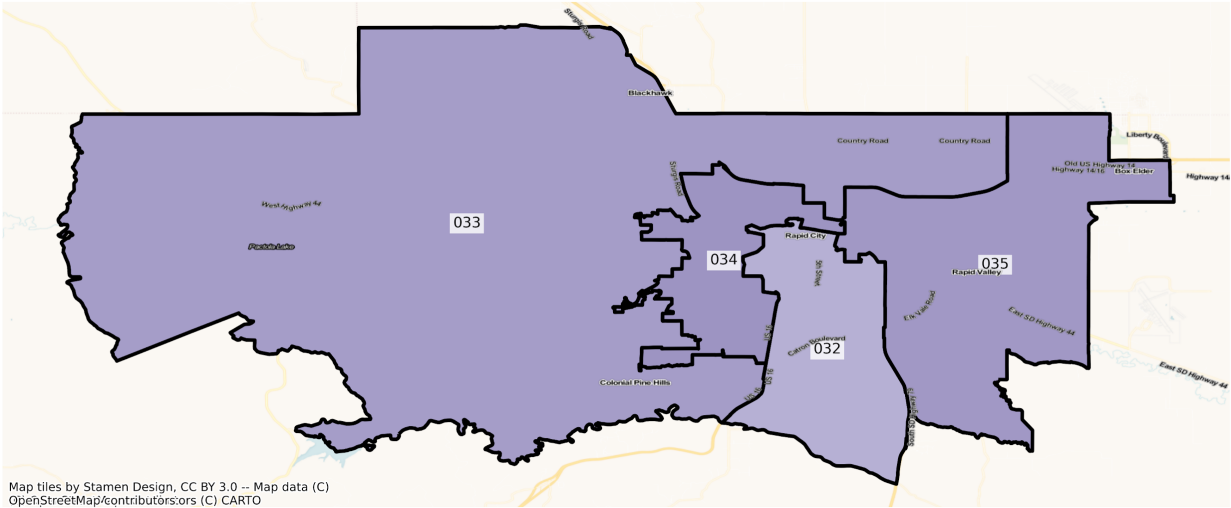




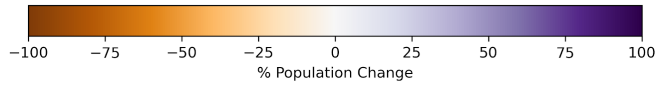
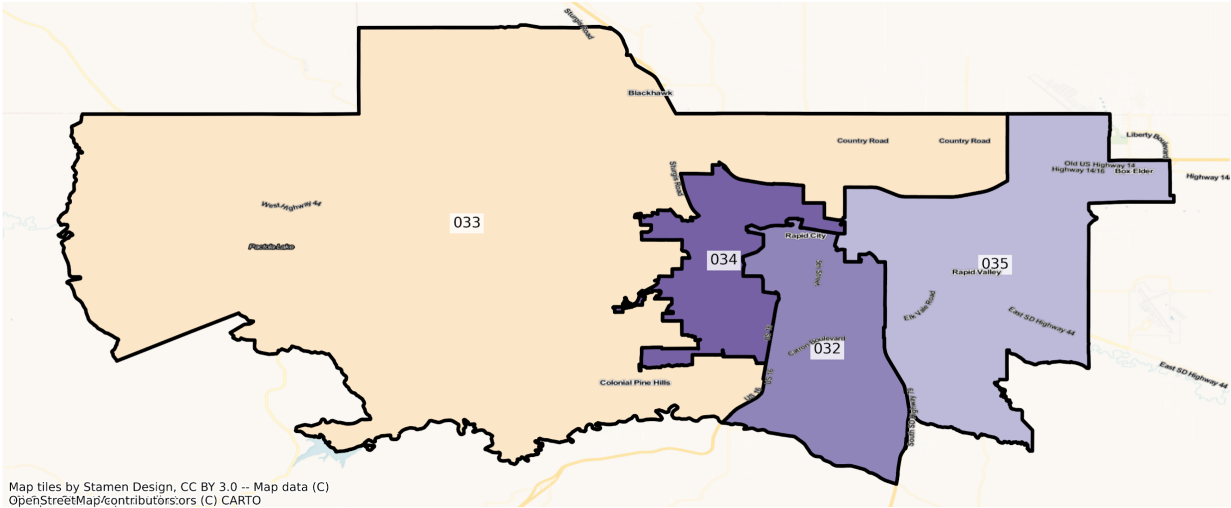
SD Rapid City State Legislative Districts  
Population % Change from 2010 to 2020  
Ethnicity: Not Latino American Indian and Alaska Native alone



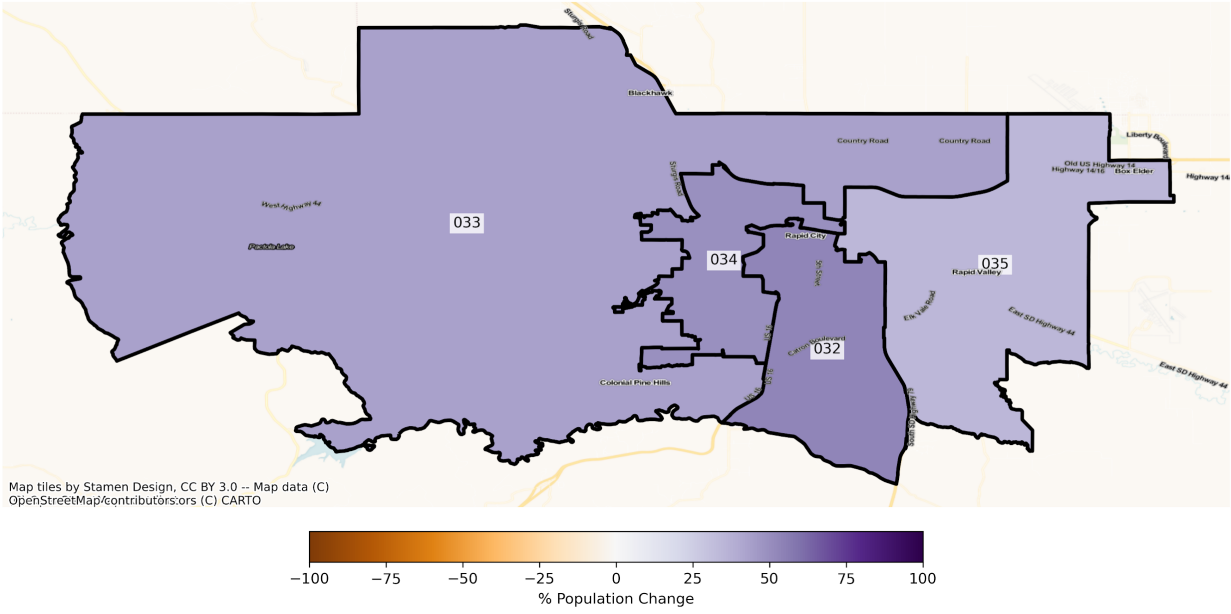
SD Rapid City State Legislative Districts  
Population % Change from 2010 to 2020  
Ethnicity: Hispanic or Latino



SD Rapid City State Legislative Districts  
Population % Change from 2010 to 2020  
Ethnicity: Not Latino African American alone

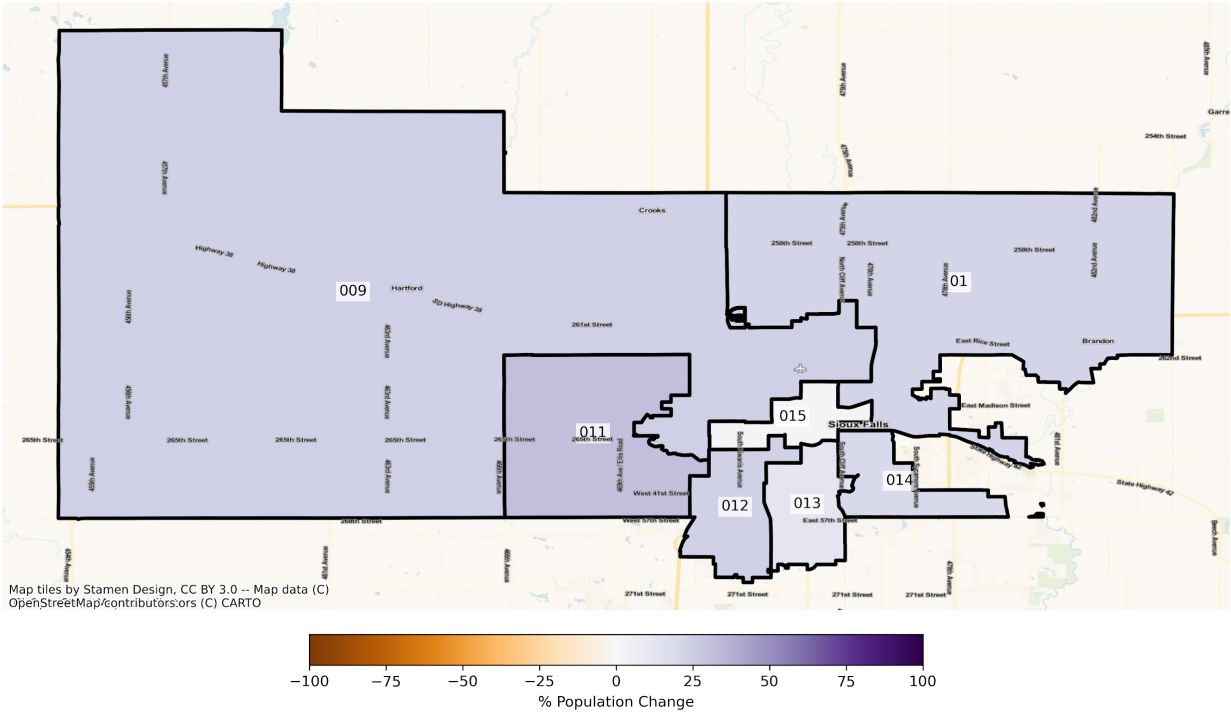


SD Rapid City State Legislative Districts  
Population % Change from 2010 to 2020  
Ethnicity: Not Latino Asian alone

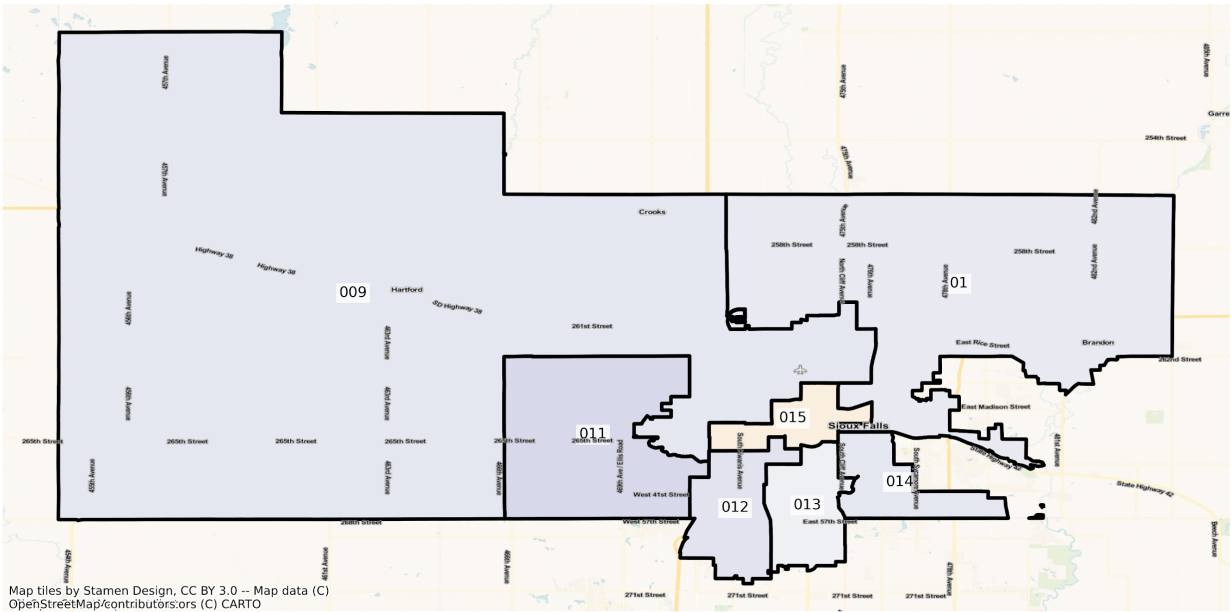


# Sioux Falls

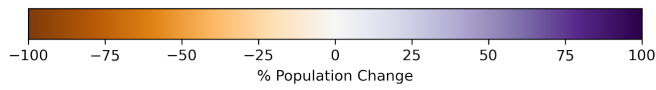
SD Sioux Falls State Legislative Districts  
Population % Change from 2010 to 2020  
Total Population



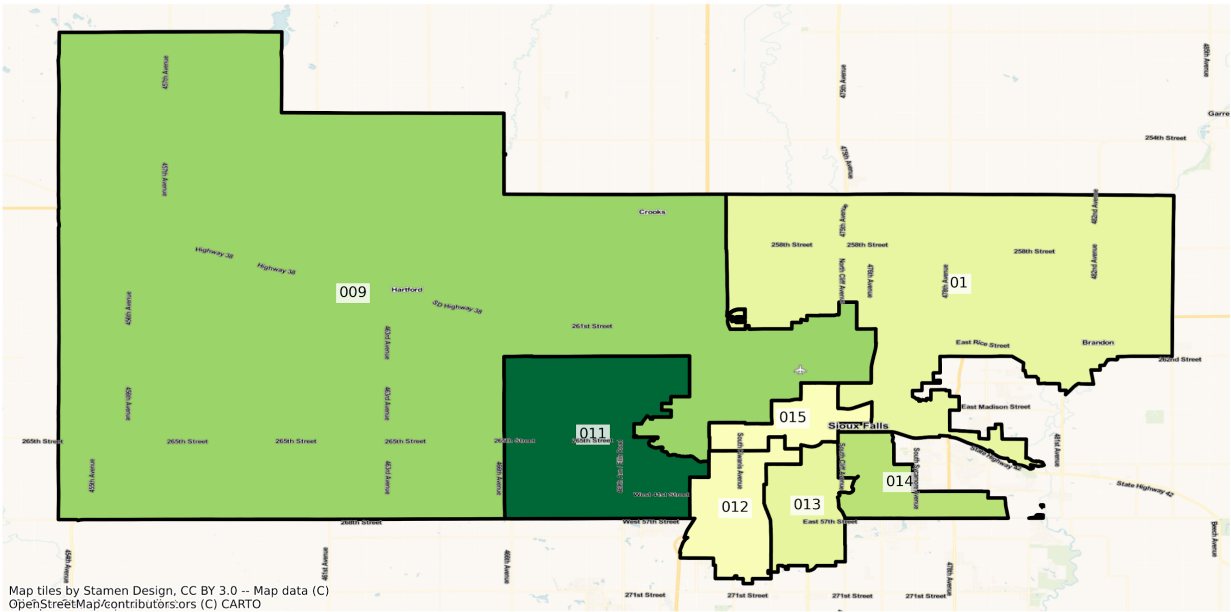
SD Sioux Falls State Legislative Districts  
 Population % Change from 2010 to 2020  
 Ethnicity: Not Latino White alone



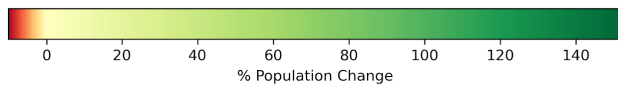
Map tiles by Stamen Design, CC BY 3.0 -- Map data (C) OpenStreetMap/contributors:ors (C) CARTO



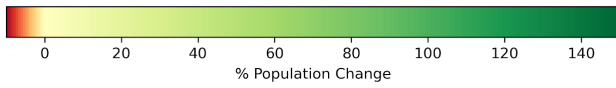
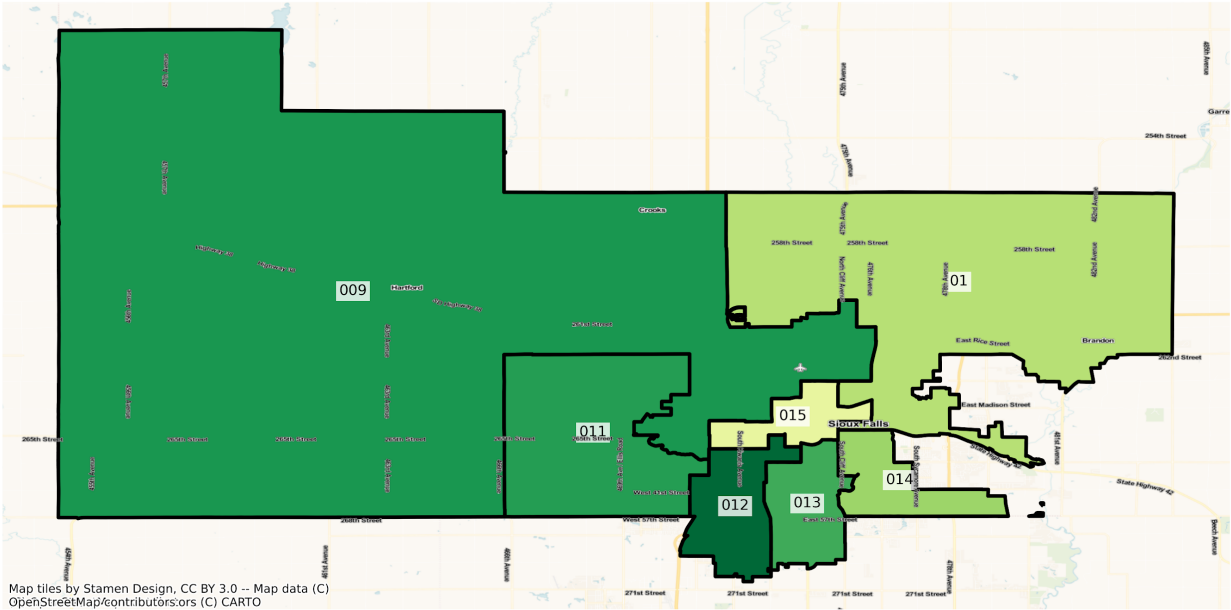
SD Sioux Falls State Legislative Districts  
 Population % Change from 2010 to 2020  
 Ethnicity: Not Latino American Indian and Alaska Native alone



Map tiles by Stamen Design, CC BY 3.0 -- Map data (C) OpenStreetMap/contributors:ors (C) CARTO

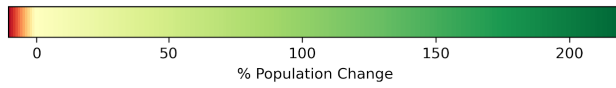
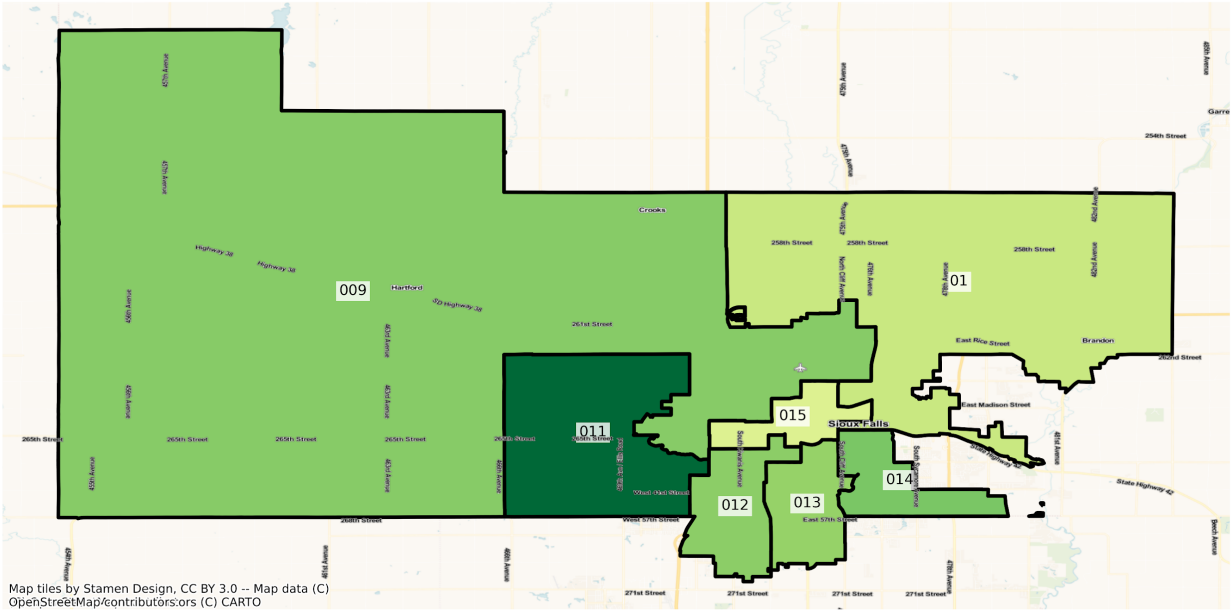


SD Sioux Falls State Legislative Districts  
Population % Change from 2010 to 2020  
Ethnicity: Hispanic or Latino

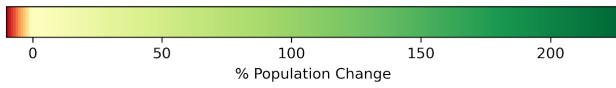
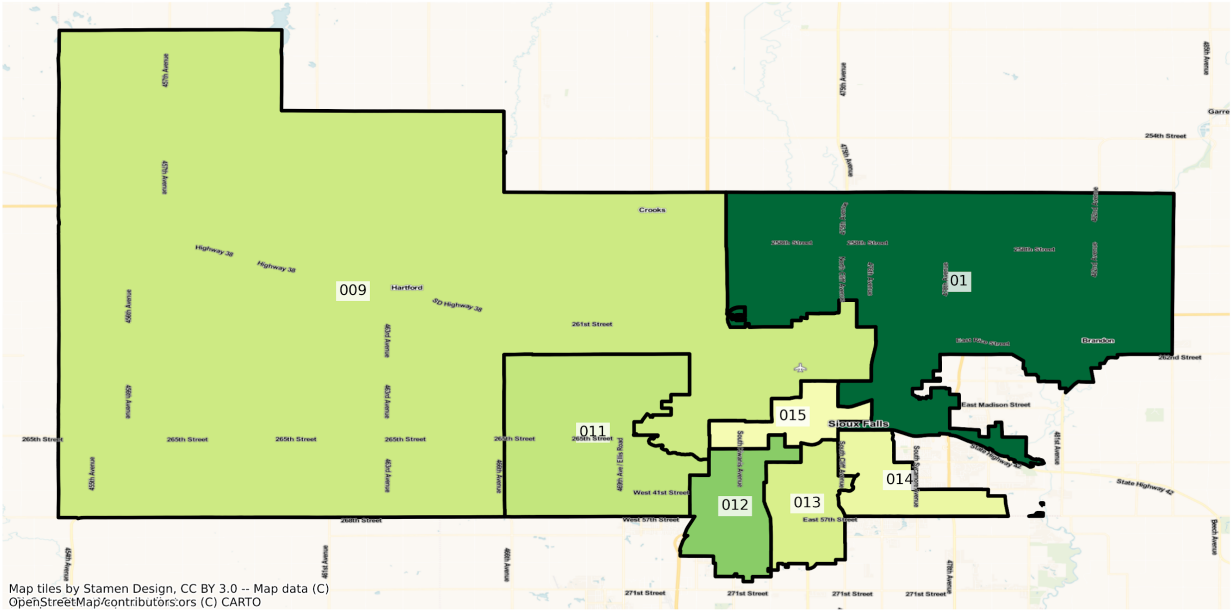




SD Sioux Falls State Legislative Districts  
Population % Change from 2010 to 2020  
Ethnicity: Not Latino African American alone



SD Sioux Falls State Legislative Districts  
 Population % Change from 2010 to 2020  
 Ethnicity: Not Latino Asian alone



2010 Population by Race and Ethnicity at the State Senate District Level

DISTRICT	Total Population	Hispanic or Latino Origin	White Alone, not Latino	African American Alone, not Latino	AIAN Alone, not Latino <sup>1</sup>	Asian Alone, not Latino	NHPI Alone, not Latino <sup>2</sup>	Other Alone, not Latino	Two or More, not Latino
1	23984	524	18514	24	4411	54	0	5	452
2	24129	372	23146	56	298	43	1	6	207
3	24334	387	22215	163	801	319	42	13	394
4	23269	556	22310	35	120	60	1	12	175
5	23721	399	22359	83	489	114	0	2	275
6	23119	270	22075	165	95	169	2	10	333
7	23922	368	21898	238	223	838	8	12	337
8	22430	345	20551	91	969	162	3	3	306
9	23782	1181	20491	780	483	308	13	36	490
10	23252	1152	19294	1457	356	527	9	51	406
11	22784	555	21043	316	140	332	7	16	375
12	22206	603	19869	516	455	271	8	12	472
13	22432	505	20657	337	321	277	10	13	312
14	22980	813	20301	741	281	389	20	20	415
15	22472	1845	15678	1958	1769	458	10	21	733
16	22453	390	21369	113	143	166	11	9	252
17	22211	389	20562	199	460	247	6	19	329
18	22438	614	20563	327	537	115	5	7	270
19	22990	296	22309	57	143	40	1	3	141
20	24285	479	22787	81	515	113	13	8	289
21	22418	341	17080	75	4389	45	0	6	482
22	22546	1409	19921	125	189	646	8	8	240
23	22166	197	20806	23	825	45	4	5	261
24	23174	368	19733	95	2395	97	2	13	471
25	23212	526	21687	347	183	181	4	28	256
26A	11660	257	1718	18	9389	23	0	1	254
26B	11535	151	8008	20	3098	19	5	1	233

27	22512	434	5107	22	16457	41	7	8	436
28A	12152	291	2917	14	8572	20	1	1	336
28B	12195	312	11443	12	178	21	2	8	219
29	23992	802	21434	342	523	184	25	20	662
30	24366	724	21941	90	1009	83	7	7	505
31	24106	612	22358	87	457	157	6	10	419
32	24287	969	19739	238	2306	229	13	9	784
33	22800	858	18187	200	2616	192	10	20	717
34	23598	695	20460	213	1344	251	16	16	603
35	24265	1130	18969	301	2537	317	33	19	959

<sup>1</sup>American Indian and Alaska Native Alone, not Latino

<sup>2</sup>Native Hawaiian and Pacific Islander Alone, not Latino

#### 2020 Population by Race and Ethnicity at the State Senate District Level

DISTRICT	Total Population	Hispanic or Latino Origin	White Alone, not Latino	African American Alone, not Latino	AIAN Alone, not Latino <sup>1</sup>	Asian Alone, not Latino	NHPI Alone, not Latino <sup>2</sup>	Other Alone, not Latino	Two or More, not Latino
1	23193	657	16800	43	4825	63	6	23	776
2	24405	951	22170	68	381	230	16	29	560
3	26506	1270	22163	505	808	700	35	75	950
4	24391	1089	22426	70	203	49	8	35	511
5	24953	684	22646	108	606	188	3	40	678
6	34943	935	31350	632	257	379	8	75	1307
7	25207	1010	21542	569	305	890	13	46	832
8	22023	1019	19042	108	882	167	11	58	736
9	29707	2604	22848	1630	803	478	19	65	1260
10	28399	1720	21211	2298	419	1722	7	74	948
11	29974	1199	25464	1010	353	545	6	71	1326
12	27504	1508	22628	1058	478	573	7	96	1156
13	25185	1032	21652	670	380	404	3	64	980
14	27628	1336	22569	1608	419	481	15	76	1124

15	22868	2174	14502	2719	1813	510	11	60	1079
16	24967	811	22609	212	176	287	27	56	789
17	23640	707	20698	272	606	373	6	51	927
18	23310	1234	20195	312	638	129	9	41	752
19	23084	465	21785	35	192	30	3	46	528
20	24366	1206	21579	141	651	133	0	29	627
21	22315	405	16153	135	4688	66	21	12	835
22	24336	2860	18295	147	268	2079	64	30	593
23	21425	388	19316	38	997	67	1	27	591
24	23566	587	19063	104	2476	144	14	59	1119
25	28011	1055	24410	859	261	429	4	100	893
26A	11237	261	1336	11	9223	48	0	7	351
26B	11717	175	7311	35	3647	31	5	9	504
27	22303	577	4697	45	16151	68	5	25	735
28A	11548	161	2210	15	8677	29	3	6	447
28B	12324	431	11102	18	248	26	5	35	459
29	27790	1260	23309	437	836	263	54	97	1534
30	24497	785	21322	110	863	127	15	108	1167
31	25781	922	22946	128	486	196	18	51	1034
32	25606	1335	19207	366	2752	351	11	93	1491
33	25071	1242	18976	171	2784	275	18	112	1493
34	24845	1030	19683	351	1968	376	7	82	1348
35	28042	1656	20368	403	3075	426	35	87	1992

<sup>1</sup>American Indian and Alaska Native Alone, not Latino

<sup>2</sup>Native Hawaiian and Pacific Islander Alone, not Latino

Percent Change of Population from 2010 to 2020 by Race and Ethnicity at State Senate District Level

DISTRICT	Total Population	Hispanic or Latino Origin	White Alone, not Latino	African American Alone, not Latino	AIAN Alone, not Latino <sup>1</sup>	Asian Alone, not Latino	NHPI Alone, not Latino <sup>2</sup>	Other Alone, not Latino	Two or More, not Latino
1	-3.30%	25.38%	-9.26%	79.17%	9.39%	16.67%	inf	360.00%	71.68%
2	1.14%	155.65%	-4.22%	21.43%	27.85%	434.88%	1500.00%	383.33%	170.53%
3	8.93%	228.17%	-0.23%	209.82%	0.87%	119.44%	-16.67%	476.92%	141.12%
4	4.82%	95.86%	0.52%	100.00%	69.17%	-18.33%	700.00%	191.67%	192.00%
5	5.19%	71.43%	1.28%	30.12%	23.93%	64.91%	inf	1900.00%	146.55%
6	51.14%	246.30%	42.02%	283.03%	170.53%	124.26%	300.00%	650.00%	292.49%
7	5.37%	174.46%	-1.63%	139.08%	36.77%	6.21%	62.50%	283.33%	146.88%
8	-1.81%	195.36%	-7.34%	18.68%	-8.98%	3.09%	266.67%	1833.33%	140.52%
9	24.91%	120.49%	11.50%	108.97%	66.25%	55.19%	46.15%	80.56%	157.14%
10	22.14%	49.31%	9.94%	57.72%	17.70%	226.76%	-22.22%	45.10%	133.50%
11	31.56%	116.04%	21.01%	219.62%	152.14%	64.16%	-14.29%	343.75%	253.60%
12	23.86%	150.08%	13.89%	105.04%	5.05%	111.44%	-12.50%	700.00%	144.92%
13	12.27%	104.36%	4.82%	98.81%	18.38%	45.85%	-70.00%	392.31%	214.10%
14	20.23%	64.33%	11.17%	117.00%	49.11%	23.65%	-25.00%	280.00%	170.84%
15	1.76%	17.83%	-7.50%	38.87%	2.49%	11.35%	10.00%	185.71%	47.20%
16	11.20%	107.95%	5.80%	87.61%	23.08%	72.89%	145.45%	522.22%	213.10%
17	6.43%	81.75%	0.66%	36.68%	31.74%	51.01%	0.00%	168.42%	181.76%
18	3.89%	100.98%	-1.79%	-4.59%	18.81%	12.17%	80.00%	485.71%	178.52%
19	0.41%	57.09%	-2.35%	-38.60%	34.27%	-25.00%	200.00%	1433.33%	274.47%
20	0.33%	151.77%	-5.30%	74.07%	26.41%	17.70%	-100.00%	262.50%	116.96%
21	-0.46%	18.77%	-5.43%	80.00%	6.81%	46.67%	inf	100.00%	73.24%
22	7.94%	102.98%	-8.16%	17.60%	41.80%	221.83%	700.00%	275.00%	147.08%
23	-3.34%	96.95%	-7.16%	65.22%	20.85%	48.89%	-75.00%	440.00%	126.44%
24	1.69%	59.51%	-3.40%	9.47%	3.38%	48.45%	600.00%	353.85%	137.58%
25	20.67%	100.57%	12.56%	147.55%	42.62%	137.02%	0.00%	257.14%	248.83%
26A	-3.63%	1.56%	-22.24%	-38.89%	-1.77%	108.70%		600.00%	38.19%
26B	1.58%	15.89%	-8.70%	75.00%	17.72%	63.16%	0.00%	800.00%	116.31%

27	-0.93%	32.95%	-8.03%	104.55%	-1.86%	65.85%	-28.57%	212.50%	68.58%
28A	-4.97%	-44.67%	-24.24%	7.14%	1.22%	45.00%	200.00%	500.00%	33.04%
28B	1.06%	38.14%	-2.98%	50.00%	39.33%	23.81%	150.00%	337.50%	109.59%
29	15.83%	57.11%	8.75%	27.78%	59.85%	42.93%	116.00%	385.00%	131.72%
30	0.54%	8.43%	-2.82%	22.22%	-14.47%	53.01%	114.29%	1442.86%	131.09%
31	6.95%	50.65%	2.63%	47.13%	6.35%	24.84%	200.00%	410.00%	146.78%
32	5.43%	37.77%	-2.70%	53.78%	19.34%	53.28%	-15.38%	933.33%	90.18%
33	9.96%	44.76%	4.34%	-14.50%	6.42%	43.23%	80.00%	460.00%	108.23%
34	5.28%	48.20%	-3.80%	64.79%	46.43%	49.80%	-56.25%	412.50%	123.55%
35	15.57%	46.55%	7.38%	33.89%	21.21%	34.38%	6.06%	357.89%	107.72%

<sup>1</sup>American Indian and Alaska Native Alone, not Latino

<sup>2</sup>Native Hawaiian and Pacific Islander Alone, not Latino

## Variable Definitions

District shapefiles were retrieved from the Redistricting Data Hub, All About Redistricting, and the U.S. Census. The list of variables below can be found in the P1 and P2 table of the PL 94-171. Data was retrieved from the Redistricting Data Hub processed legacy file of the PL 94-171.

Variable Name in Report	Census Variable Reference
Total Population	P0010001
Hispanic or Latino Origin	P0020002
White Alone, not Latino	P0020005
African American Alone, not Latino	P0020006
American Indian and Alaska Native Alone, not Latino	P0020007
Asian Alone, not Latino	P0020008
Native Hawaiian and Pacific Islander Alone, not Latino	P0020009
Other Alone, not Latino	P0020010
Two or More, not Latino	P0020011