

# HAYSTAQ DNA

## Rhode Island

<b>Overview</b>	<b>2</b>
<b>Congressional</b>	<b>2</b>
Total Population	3
Population by Race and Ethnicity	4
<b>State Senate</b>	<b>9</b>
Total Population	9
Population by Race and Ethnicity	12
Cranston and Warwick	16
Pawtucket	21
Providence	26
<b>State House</b>	<b>36</b>
Total Population	36
Population by Race and Ethnicity	40
Cranston	44
Pawtucket	49
Providence	54
Warwick	59
<b>Variable Definitions</b>	<b>71</b>

## Overview

Overall, Rhode Island added 45,921 people to their population, an increase of 4.37% from the previous decade. While the total population remained largely stagnant, relatively moderate increases around cities like Providence and Pawtucket and slight decreases in more rural areas prove that Rhode Island aligns with the general national trend of movement from rural to urban/suburban areas.

The White population declined by 6.06% over the decade in accordance with its national patterns of decline. The White population declined in most districts and cities, but grew in the area around Kingston. The *overall share* of the population for Whites is now 68.69% compared to 76.31% in the 2010 Census.

The Latino population grew by 39.40% over the decade across all areas of the state, though increases were concentrated slightly more to the north of the state. The *overall share* of the population of Latinos is now 16.61% compared to 12.43% in the 2010 Census.

Over the decade, the 7.43% growth of the African American population was relatively more concentrated in the northern parts of the state, with declines in the south near Hope Valley and some areas around Providence. The *overall share* of the population for African Americans increased to 5.05% from 4.91% in the 2010 Census.

The Asian population increased by 27.97% over the decade across the state, though most significantly around Greenville. Declines were seen around Blackstone in the northeast and some areas around Providence. The *overall share* of the population for Asians is now 3.50% compared to 2.85% in the 2010 Census.

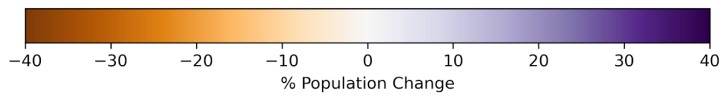
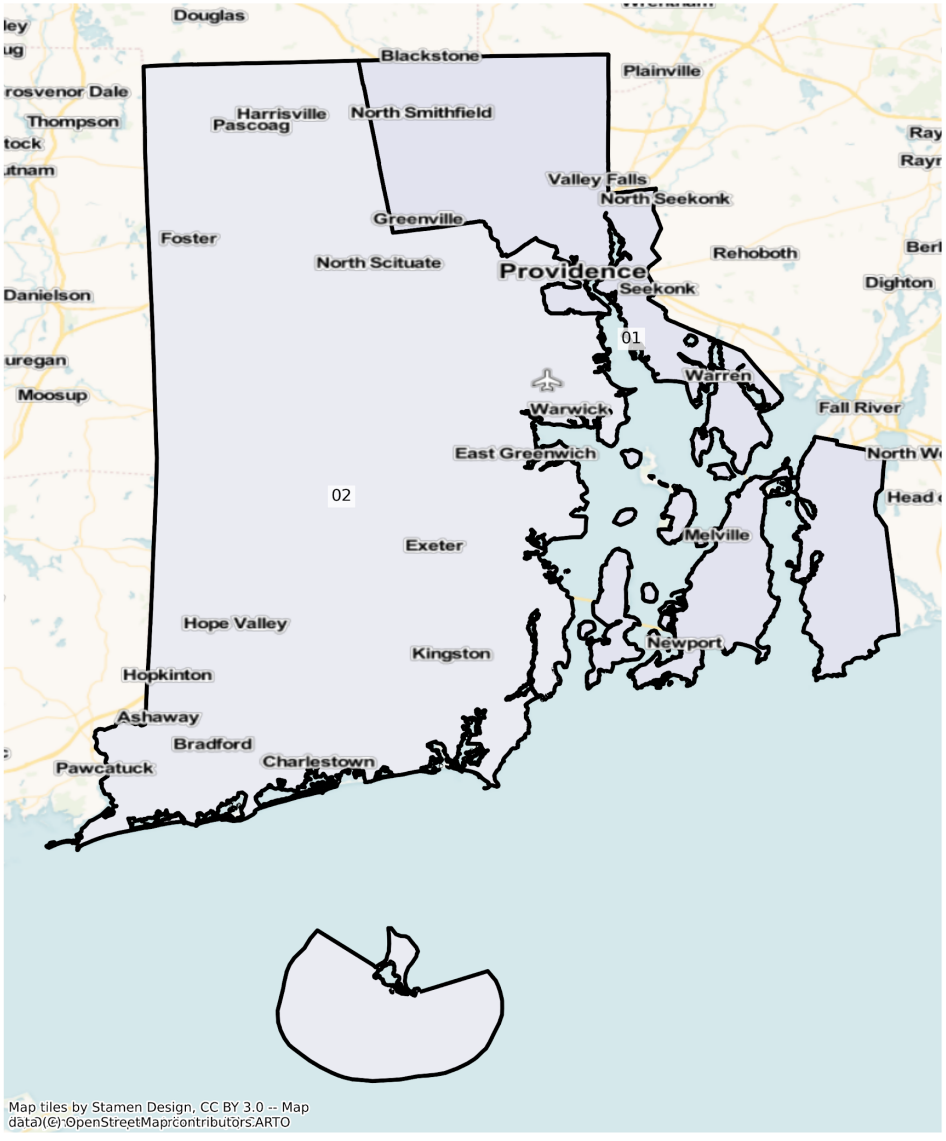
## Congressional

The charts below display the percent change in population from 2010 to 2020 for the listed group. Please note that the color bars are fixed to be from -40% to 40% and these maps are displayed in brown to purple. If the percent change in population was outside of this range, the color scheme changes to red to green to indicate a change.



# Total Population

RI Congressional Districts  
Population % Change from 2010 to 2020  
Total Population

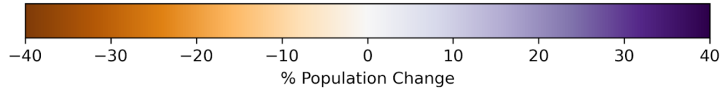
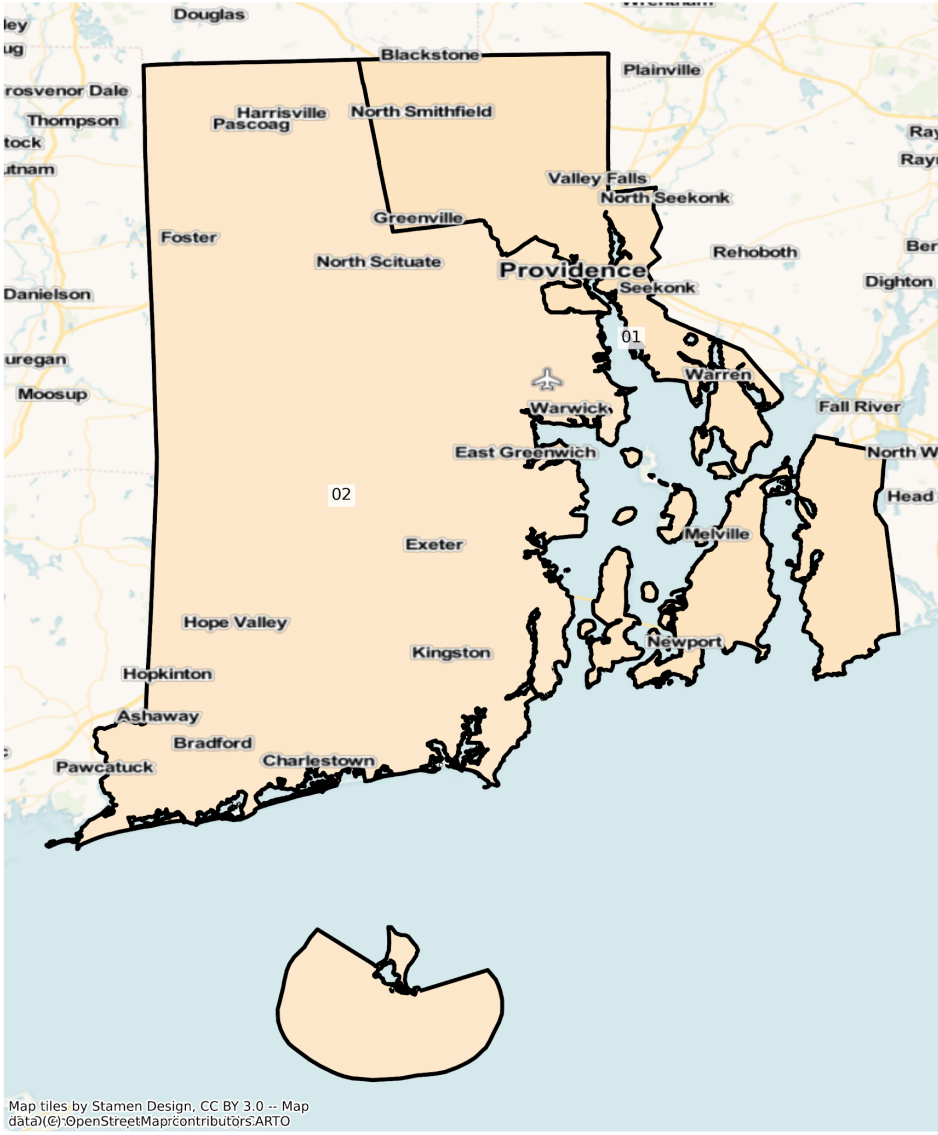


Total Population from 2010 to 2020 at the Congressional District Level

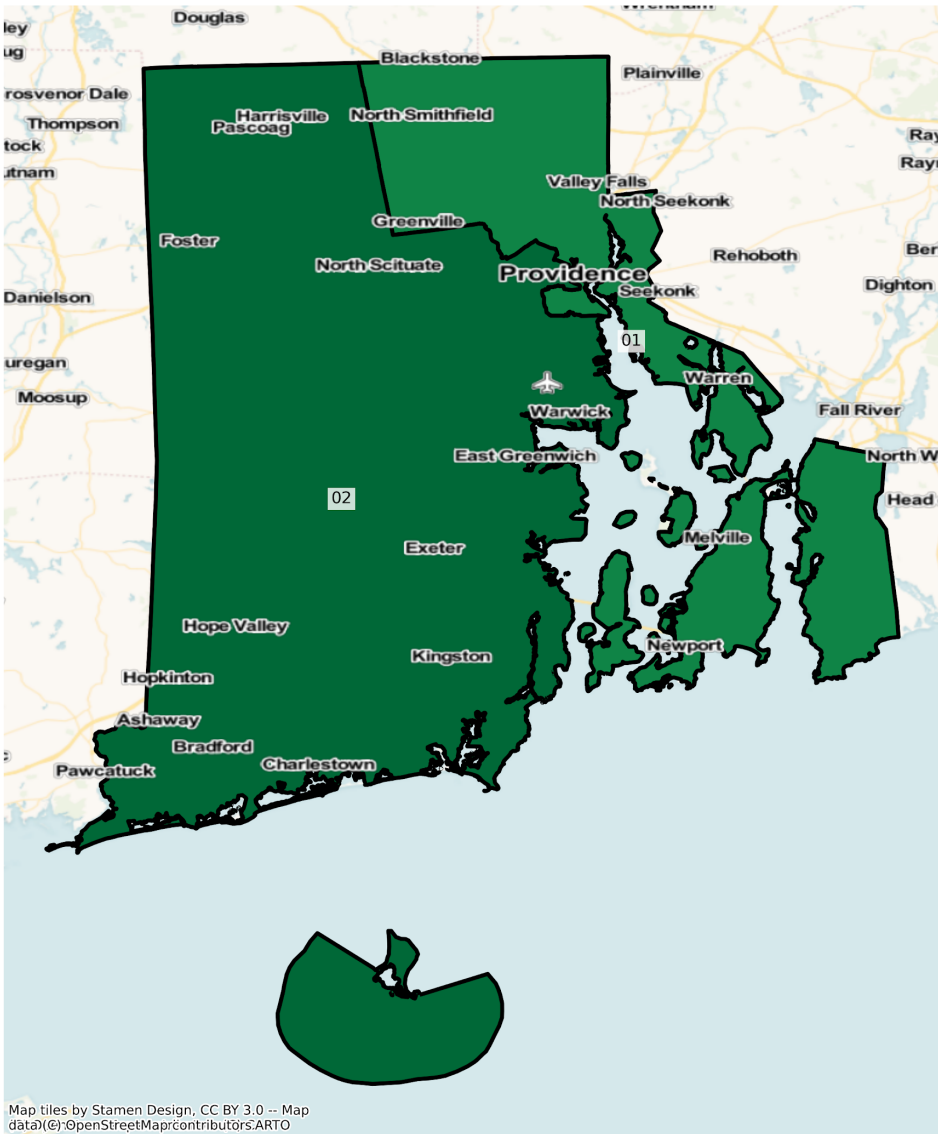
DISTRICT	Total Population 2010	Total Population 2020	Total Population % Change
1	525237	553885	5.45%
2	525079	542352	3.29%

# Population by Race and Ethnicity

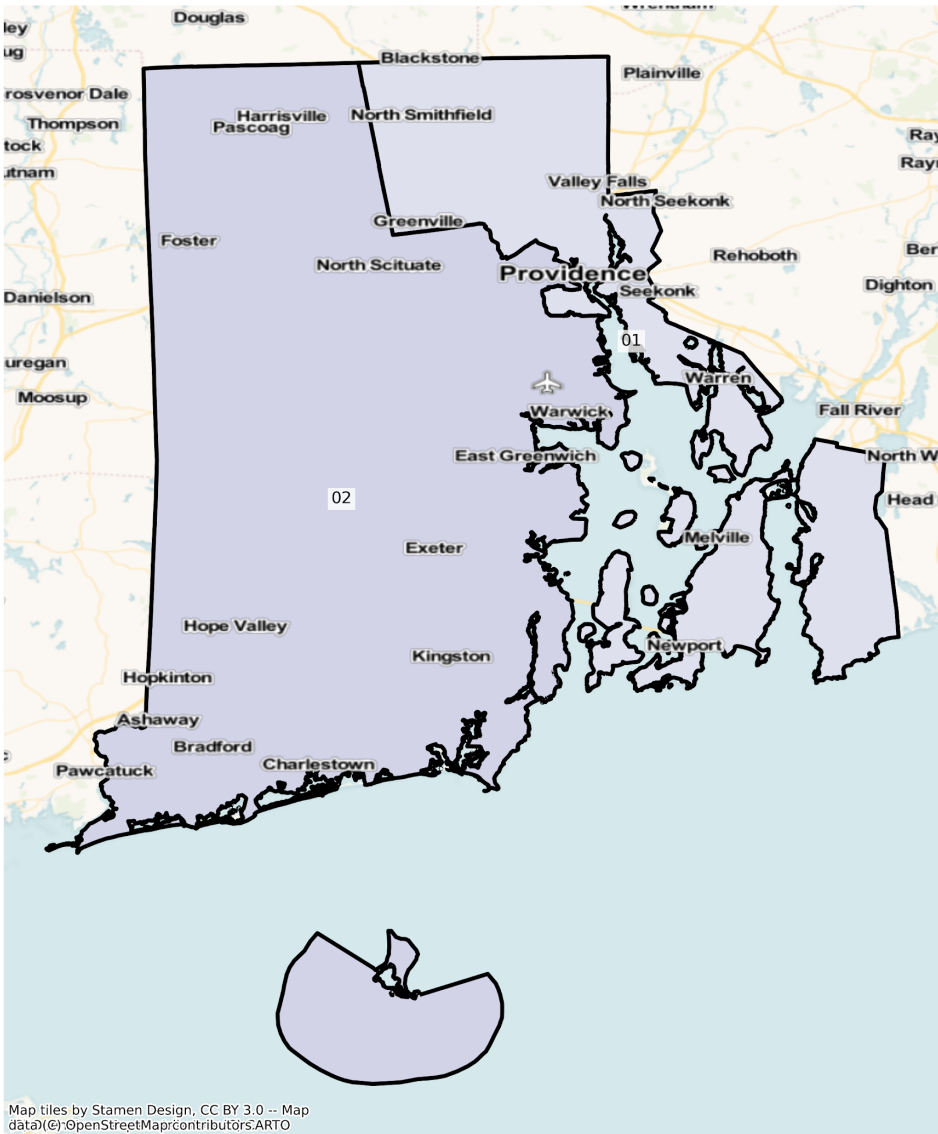
RI Congressional Districts  
Population % Change from 2010 to 2020  
Ethnicity: Not Latino White alone



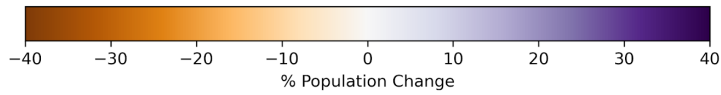
RI Congressional Districts  
Population % Change from 2010 to 2020  
Ethnicity: Hispanic or Latino



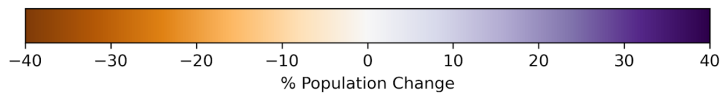
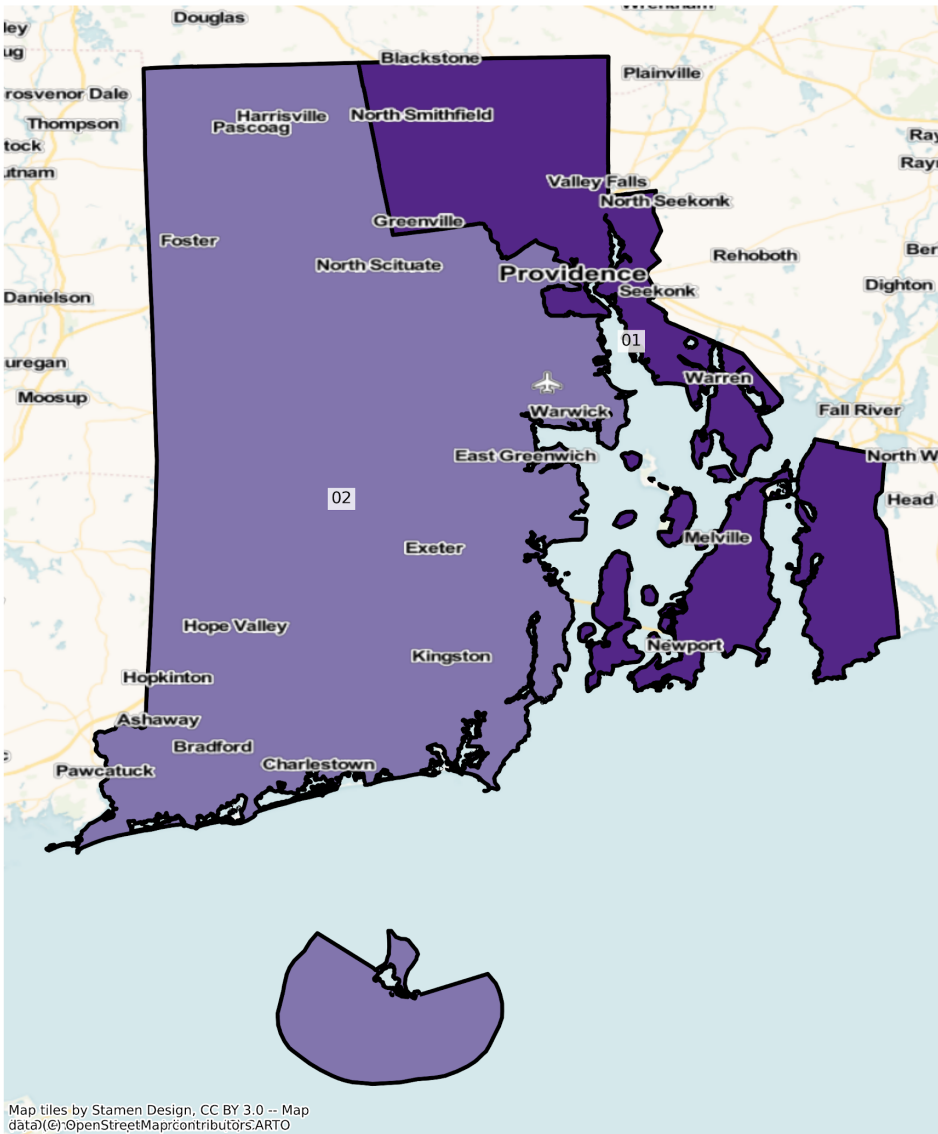
RI Congressional Districts  
Population % Change from 2010 to 2020  
Ethnicity: Not Latino African American alone



Map tiles by Stamen Design, CC BY 3.0 -- Map data (c) OpenStreetMap contributors, ARTO



RI Congressional Districts  
Population % Change from 2010 to 2020  
Ethnicity: Not Latino Asian alone



2010 Population by Race and Ethnicity at the Congressional District Level

DISTRICT	Total Population	Hispanic or Latino Origin	White Alone, not Latino	African American Alone, not Latino	AIAN Alone, not Latino <sup>1</sup>	Asian Alone, not Latino	NHPI Alone, not Latino <sup>2</sup>	Other Alone, not Latino	Two or More, not Latino
1	525237	76071	376130	33726	1796	15372	157	7499	14486
2	525079	54534	425408	17821	2219	14605	148	1373	8971

<sup>1</sup>American Indian and Alaska Native Alone, not Latino

<sup>2</sup>Native Hawaiian and Pacific Islander Alone, not Latino

2020 Population by Race and Ethnicity at the Congressional District Level

DISTRICT	Total Population	Hispanic or Latino Origin	White Alone, not Latino	African American Alone, not Latino	AIAN Alone, not Latino <sup>1</sup>	Asian Alone, not Latino	NHPI Alone, not Latino <sup>2</sup>	Other Alone, not Latino	Two or More, not Latino
1	553885	104394	351109	35908	1549	20292	185	8627	31821
2	542352	77670	401892	19470	1961	18070	135	2762	20392

<sup>1</sup>American Indian and Alaska Native Alone, not Latino

<sup>2</sup>Native Hawaiian and Pacific Islander Alone, not Latino

Percent Change of Population from 2010 to 2020 by Race and Ethnicity at Congressional District Level

DISTRICT	Total Population	Hispanic or Latino Origin	White Alone, not Latino	African American Alone, not Latino	AIAN Alone, not Latino <sup>1</sup>	Asian Alone, not Latino	NHPI Alone, not Latino <sup>2</sup>	Other Alone, not Latino	Two or More, not Latino
1	5.45%	37.23%	-6.65%	6.47%	-13.75%	32.01%	17.83%	15.04%	119.67%
2	3.29%	42.42%	-5.53%	9.25%	-11.63%	23.72%	-8.78%	101.17%	127.31%

<sup>1</sup>American Indian and Alaska Native Alone, not Latino

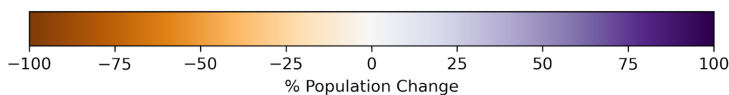
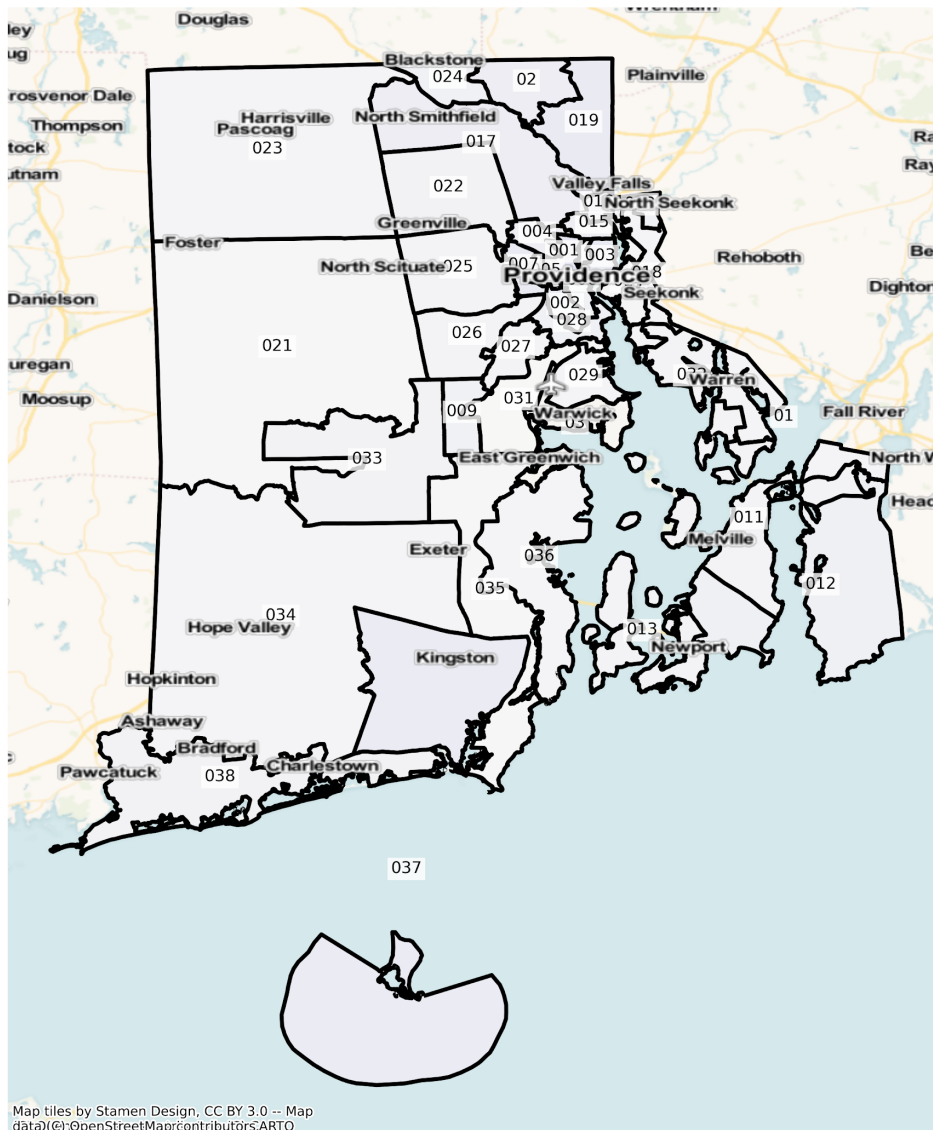
<sup>2</sup>Native Hawaiian and Pacific Islander Alone, not Latino

# State Senate

The charts below display the percent change in population from 2010 to 2020 for the listed group. Please note that the color bars are fixed to be from -100% to 100% and these maps are displayed in brown to purple. If the percent change in population was outside of this range, the color scheme changes to red to green to indicate a change.

## Total Population

RI State Senate Districts  
Population % Change from 2010 to 2020  
Total Population



Total Population from 2010 to 2020 at the State Senate District Level

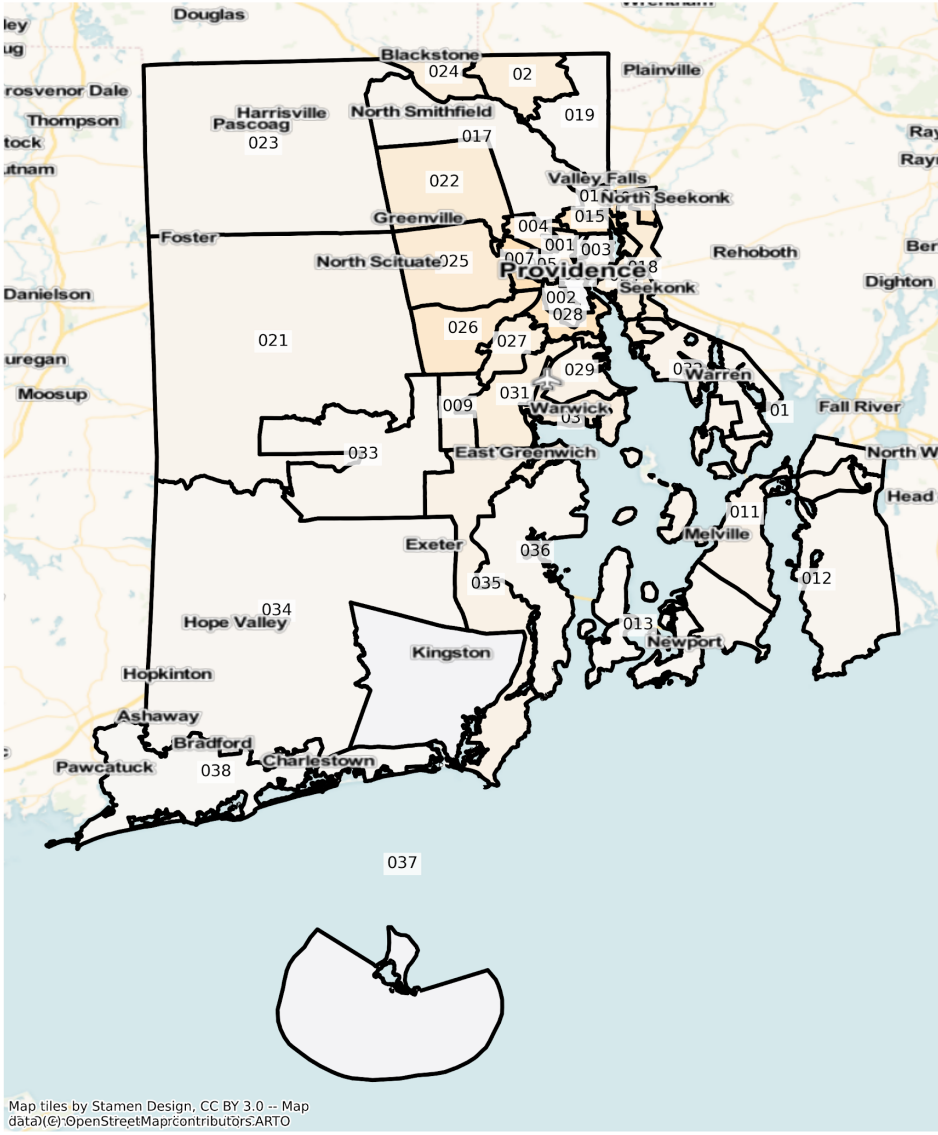
DISTRICT	Total Population 2010	Total Population 2020	Total Population % Change
1	28161	31548	12.03%
2	28079	30083	7.14%
3	28398	30946	8.97%
4	28202	29875	5.93%
5	28356	30005	5.82%
6	27211	28400	4.37%
7	28400	30740	8.24%
8	27142	28485	4.95%
9	27765	29043	4.60%
10	26995	27558	2.09%
11	26716	27385	2.50%
12	27191	28514	4.87%
13	27808	28627	2.95%
14	27128	27544	1.53%
15	27093	28763	6.16%
16	27169	31319	15.27%
17	27012	28771	6.51%
18	26890	27380	1.82%
19	27218	29386	7.97%
20	27092	28962	6.90%
21	27301	27508	0.76%
22	28320	29349	3.63%
23	28176	28831	2.32%
24	27014	28090	3.98%
25	28088	28866	2.77%
26	27254	27958	2.58%



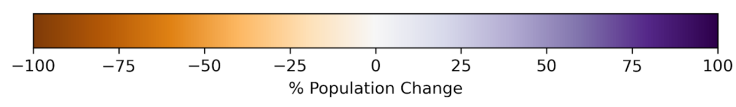
27	28167	28952	2.79%
28	27738	28883	4.13%
29	27129	27685	2.05%
30	27418	27165	-0.92%
31	28338	28276	-0.22%
32	27106	27894	2.91%
33	28230	29286	3.74%
34	28236	28720	1.71%
35	28043	28238	0.70%
36	27665	28166	1.81%
37	27982	30065	7.44%
38	28085	28971	3.15%

# Population by Race and Ethnicity

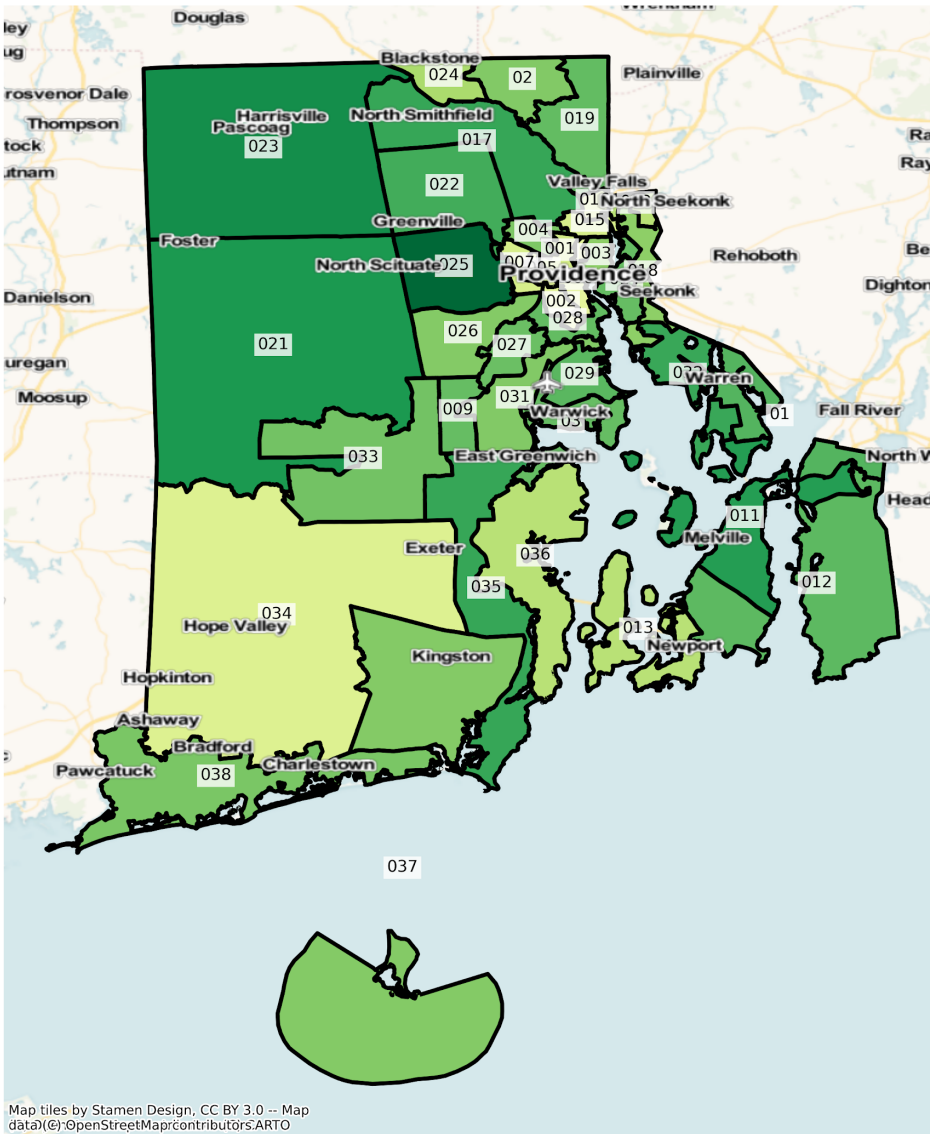
RI State Senate Districts  
Population % Change from 2010 to 2020  
Ethnicity: Not Latino White alone



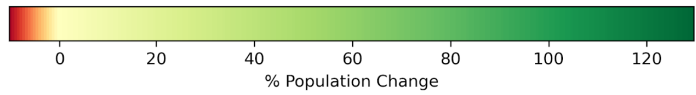
Map tiles by Stamen Design, CC BY 3.0 -- Map data (c) OpenStreetMap contributors, ARTO



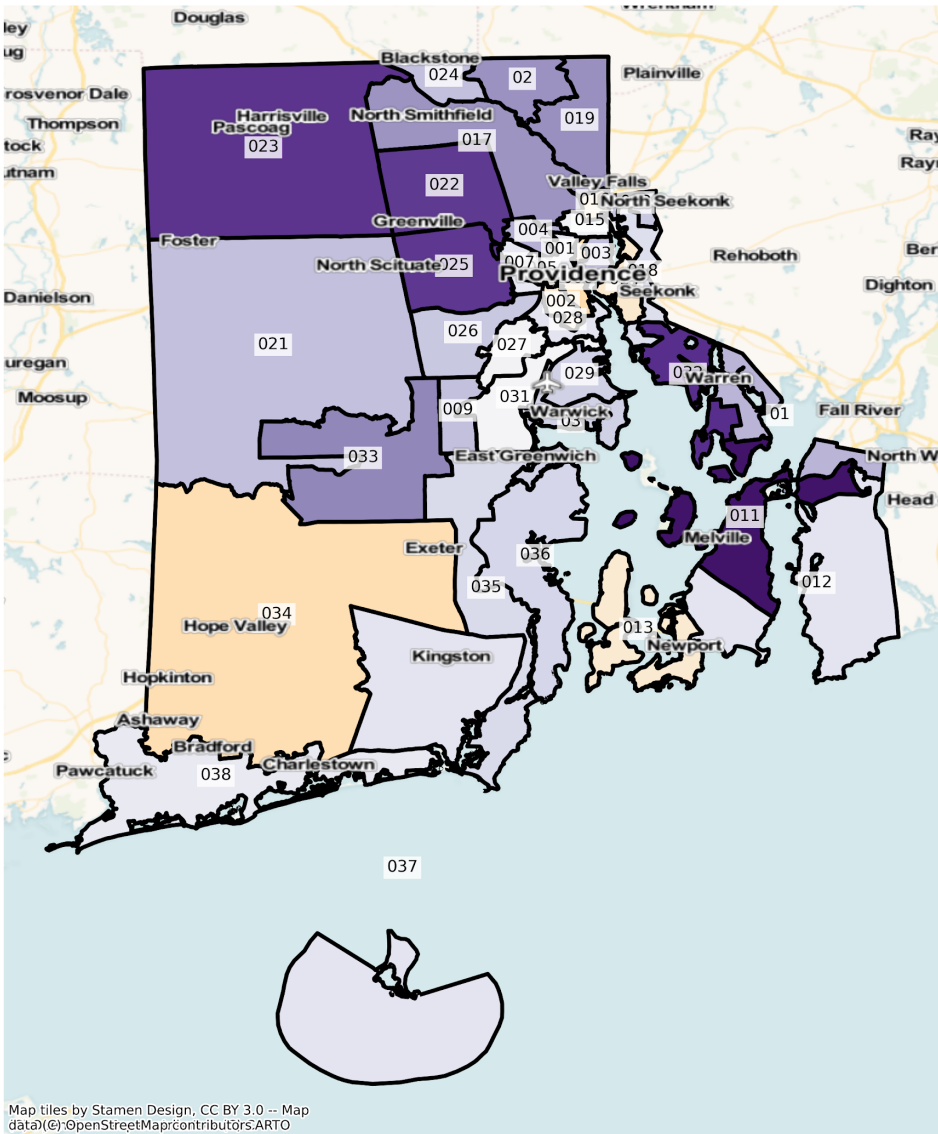
RI State Senate Districts  
 Population % Change from 2010 to 2020  
 Ethnicity: Hispanic or Latino



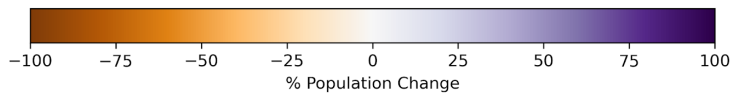
Map tiles by Stamen Design, CC BY 3.0 -- Map data (c) OpenStreetMap contributors, ARTO



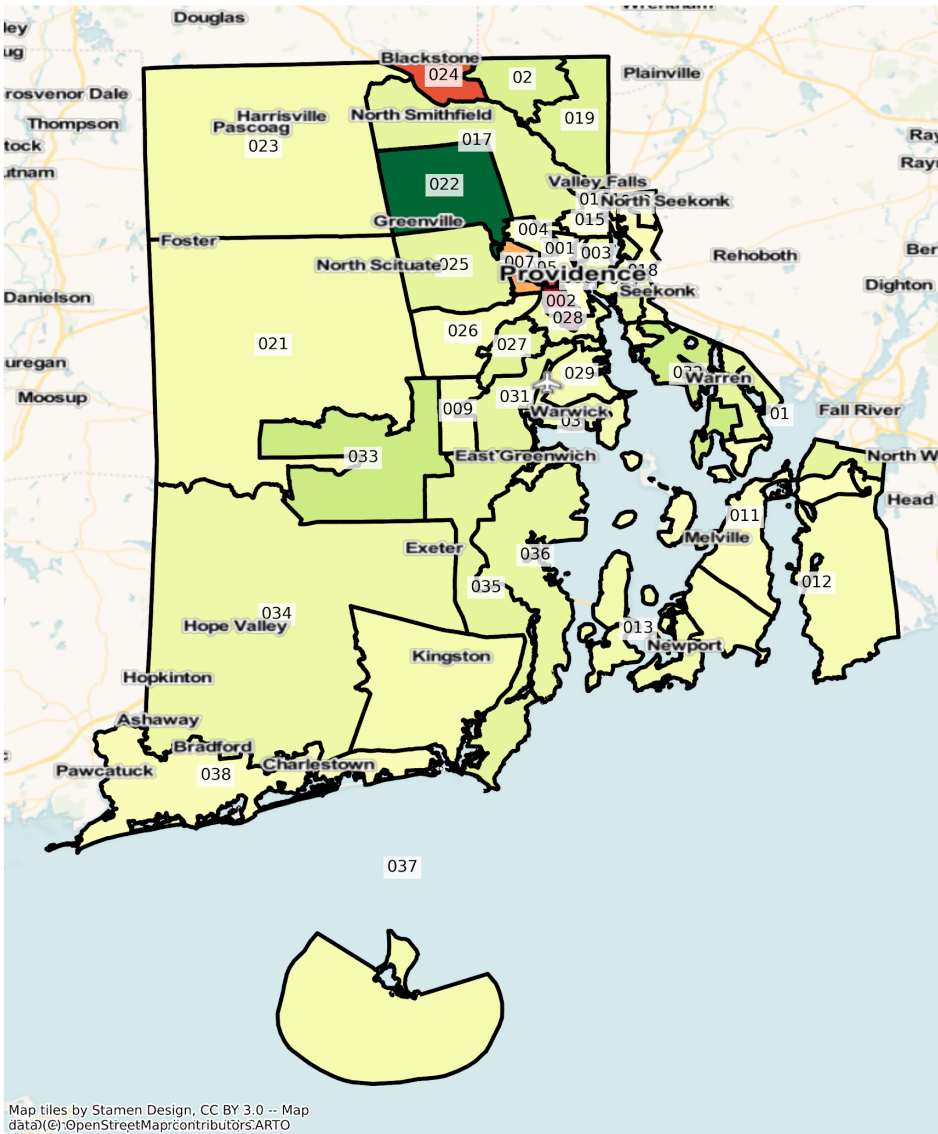
RI State Senate Districts  
 Population % Change from 2010 to 2020  
 Ethnicity: Not Latino African American alone



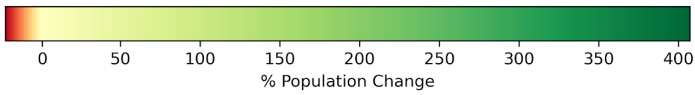
Map tiles by Stamen Design, CC BY 3.0 -- Map data (c) OpenStreetMap contributors, ARTO



RI State Senate Districts  
 Population % Change from 2010 to 2020  
 Ethnicity: Not Latino Asian alone

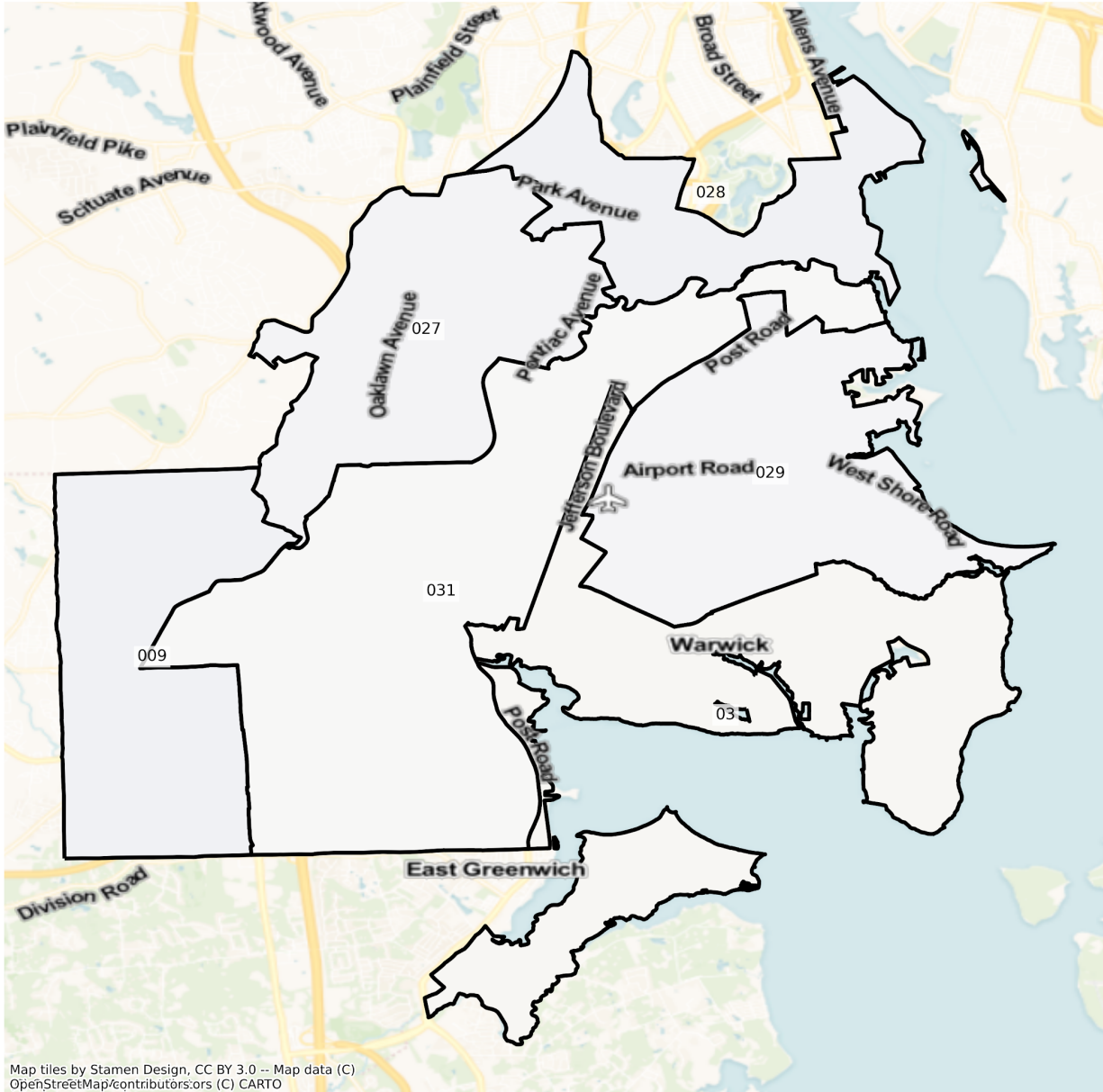


Map tiles by Stamen Design, CC BY 3.0 -- Map data (c) OpenStreetMap contributors, ARTO

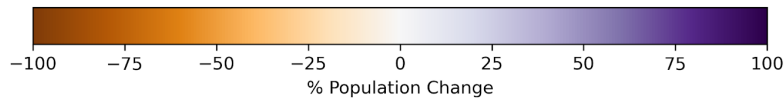


# Cranston and Warwick

RI Cranston and Warwick State Senate Districts  
Population % Change from 2010 to 2020  
Total Population

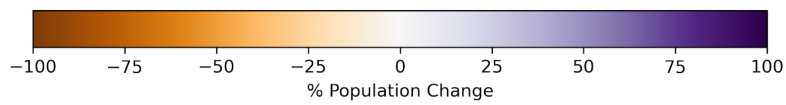
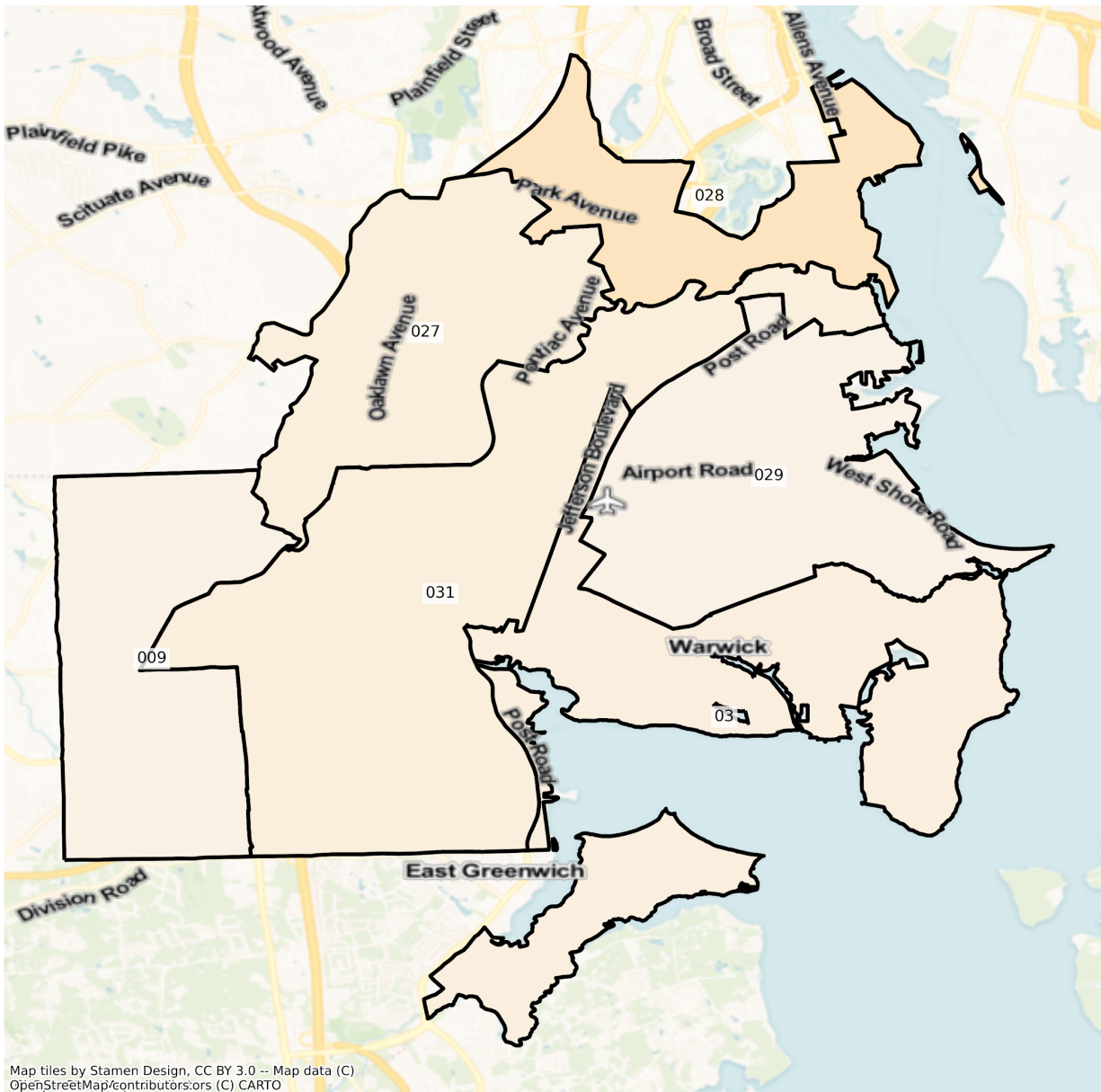


Map tiles by Stamen Design, CC BY 3.0 -- Map data (C)  
OpenStreetMap/contributors:ors (C) CARTO

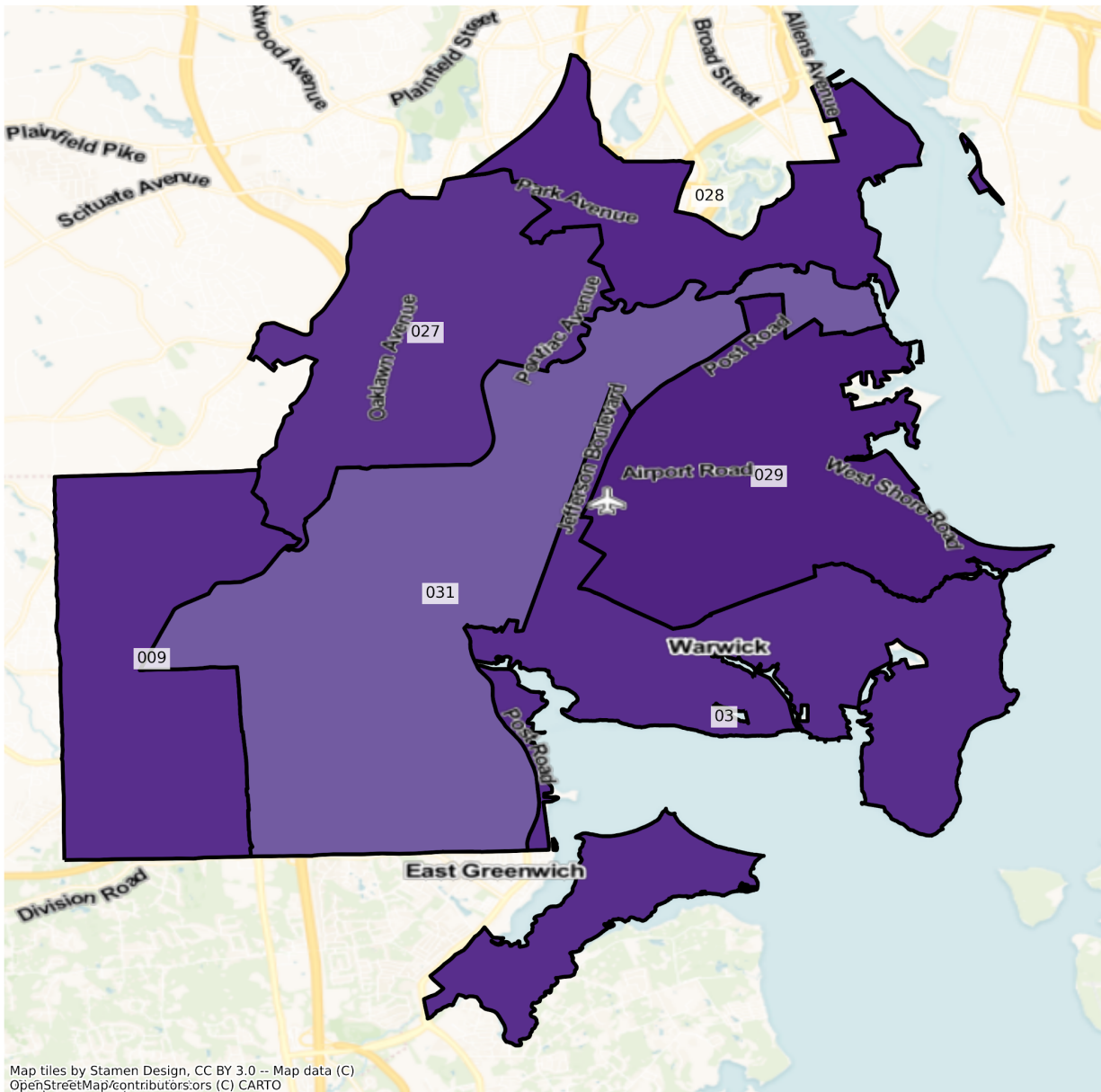




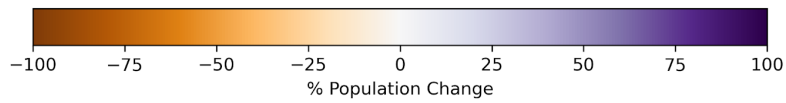
RI Cranston and Warwick State Senate Districts  
Population % Change from 2010 to 2020  
Ethnicity: Not Latino White alone



RI Cranston and Warwick State Senate Districts  
Population % Change from 2010 to 2020  
Ethnicity: Hispanic or Latino

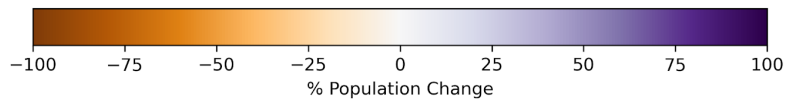
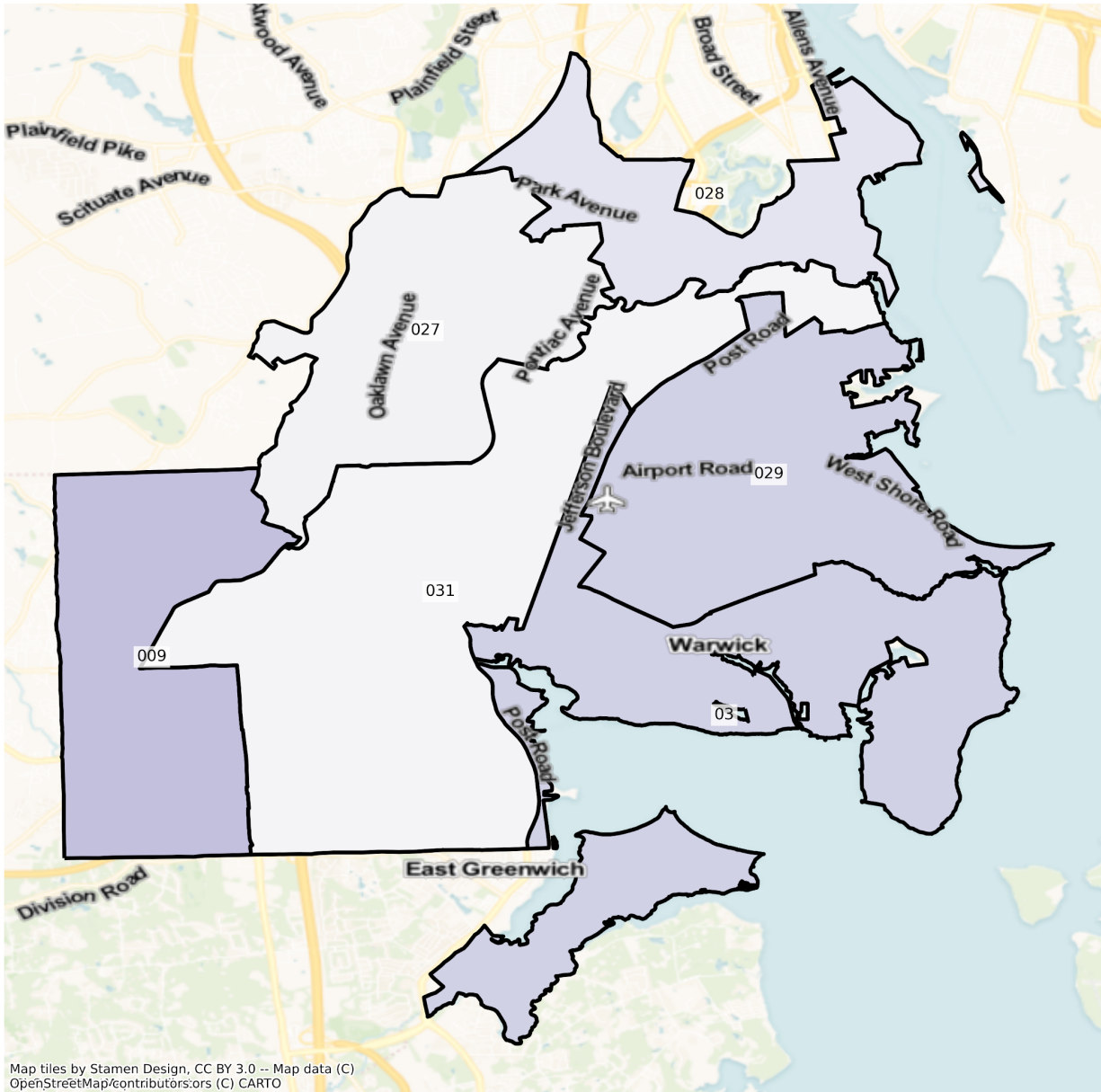


Map tiles by Stamen Design, CC BY 3.0 -- Map data (C)  
OpenStreetMap/contributors/ors (C) CARTO

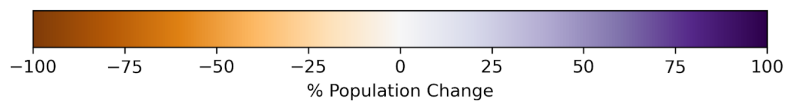
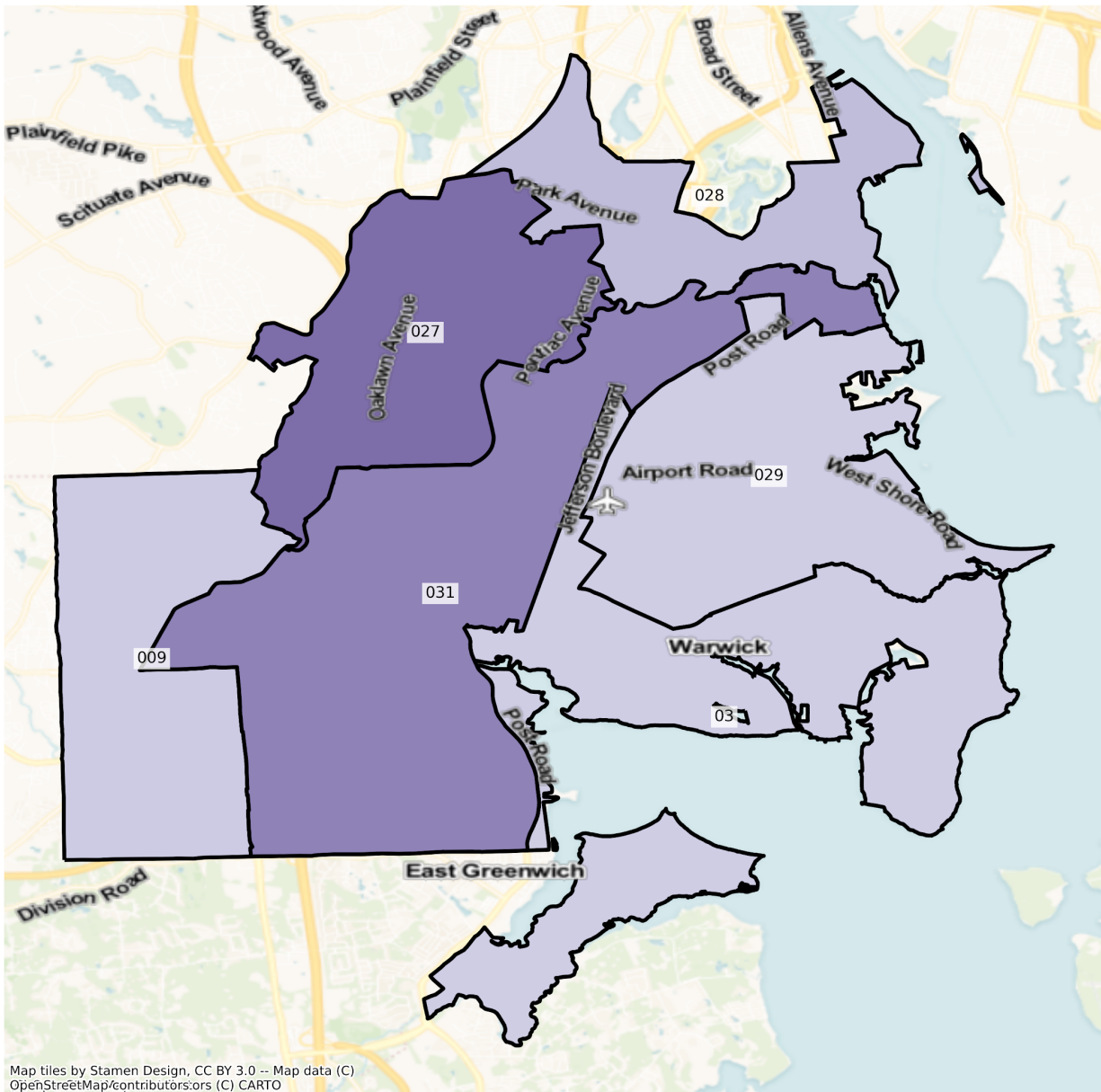




RI Cranston and Warwick State Senate Districts  
Population % Change from 2010 to 2020  
Ethnicity: Not Latino African American alone

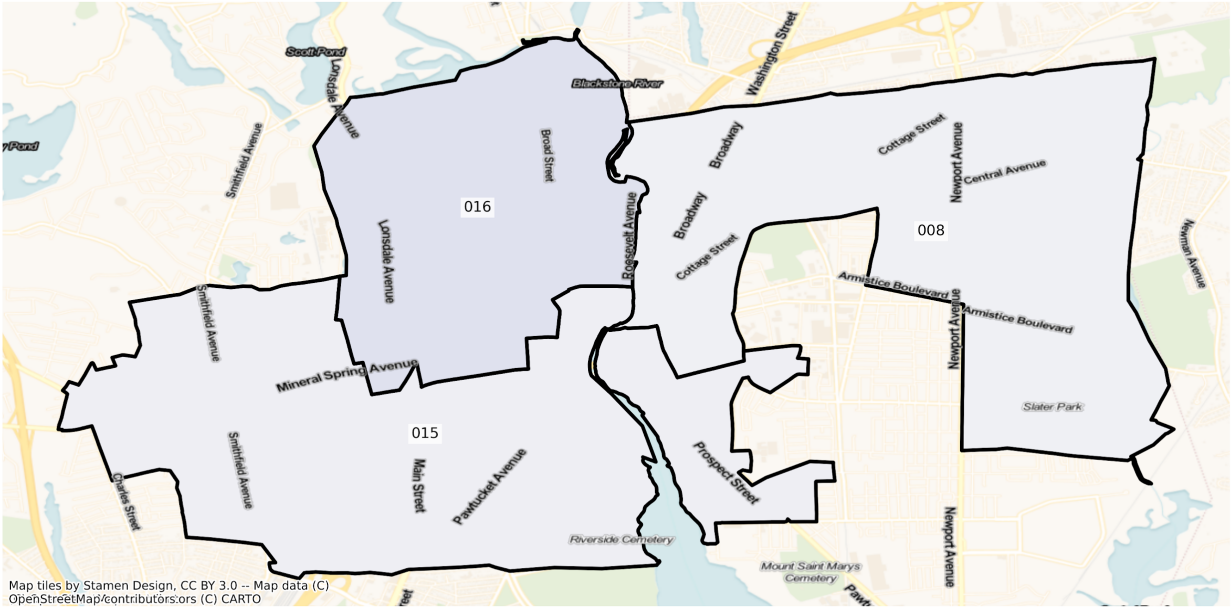


RI Cranston and Warwick State Senate Districts  
Population % Change from 2010 to 2020  
Ethnicity: Not Latino Asian alone

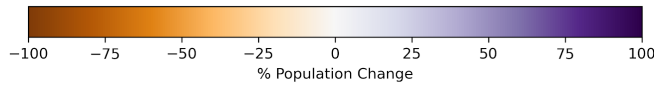


# Pawtucket

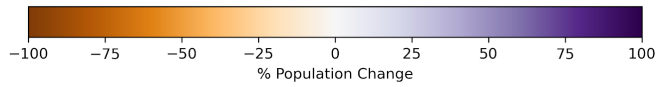
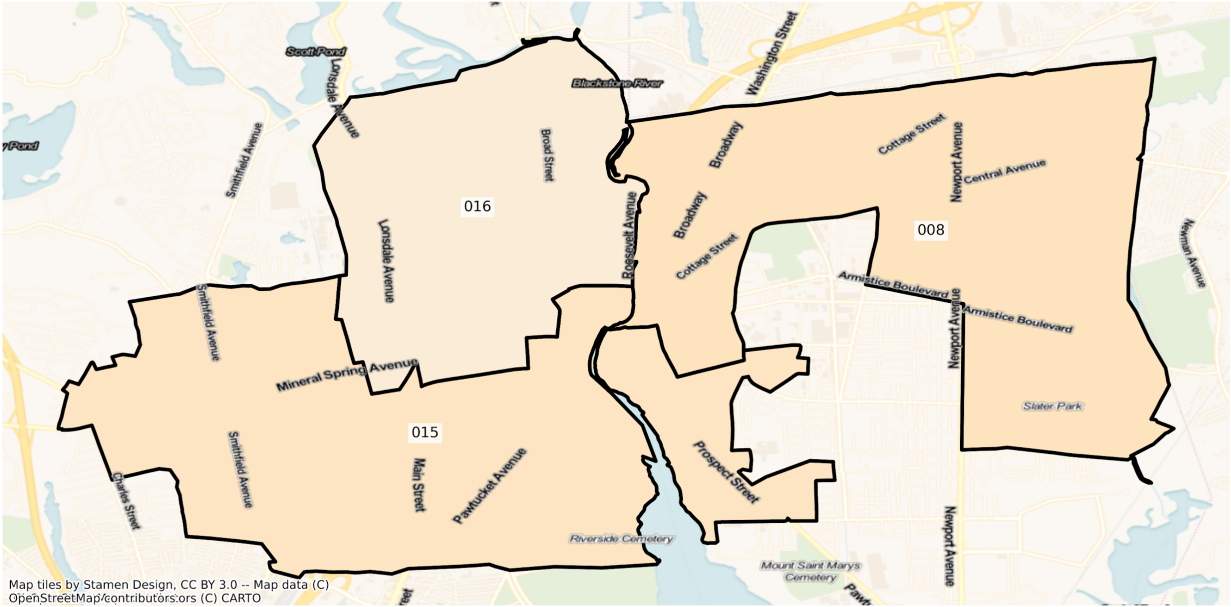
RI Pawtucket State Senate Districts  
Population % Change from 2010 to 2020  
Total Population



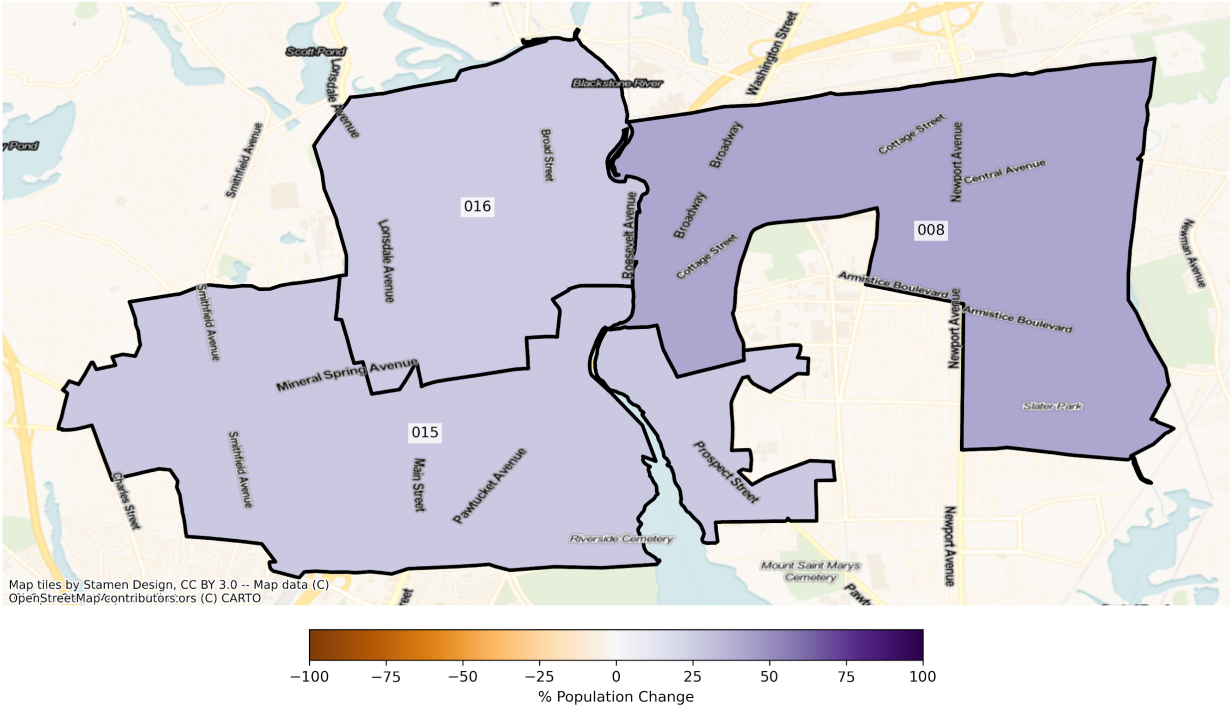
Map tiles by Stamen Design, CC BY 3.0 -- Map data (C)  
OpenStreetMap/contributors:ors (C) CARTO



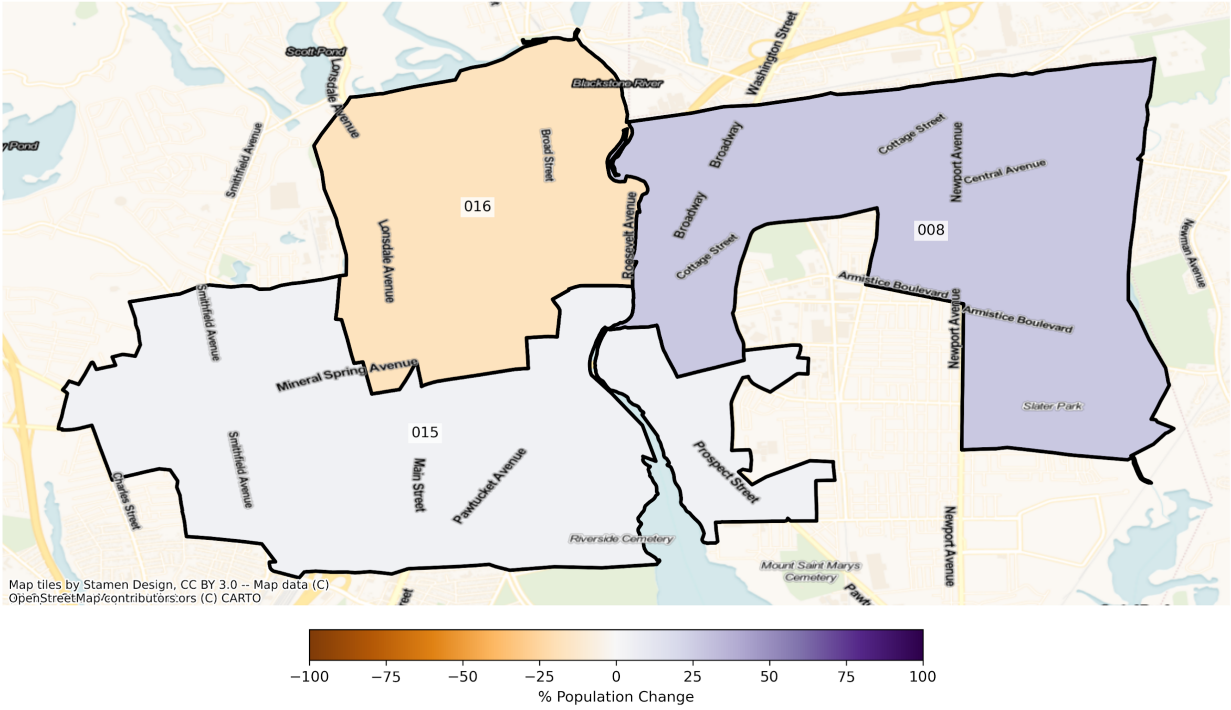
RI Pawtucket State Senate Districts  
Population % Change from 2010 to 2020  
Ethnicity: Not Latino White alone



RI Pawtucket State Senate Districts  
Population % Change from 2010 to 2020  
Ethnicity: Hispanic or Latino

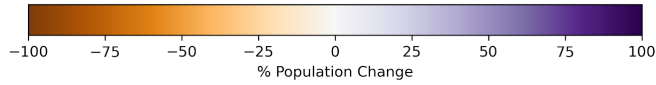
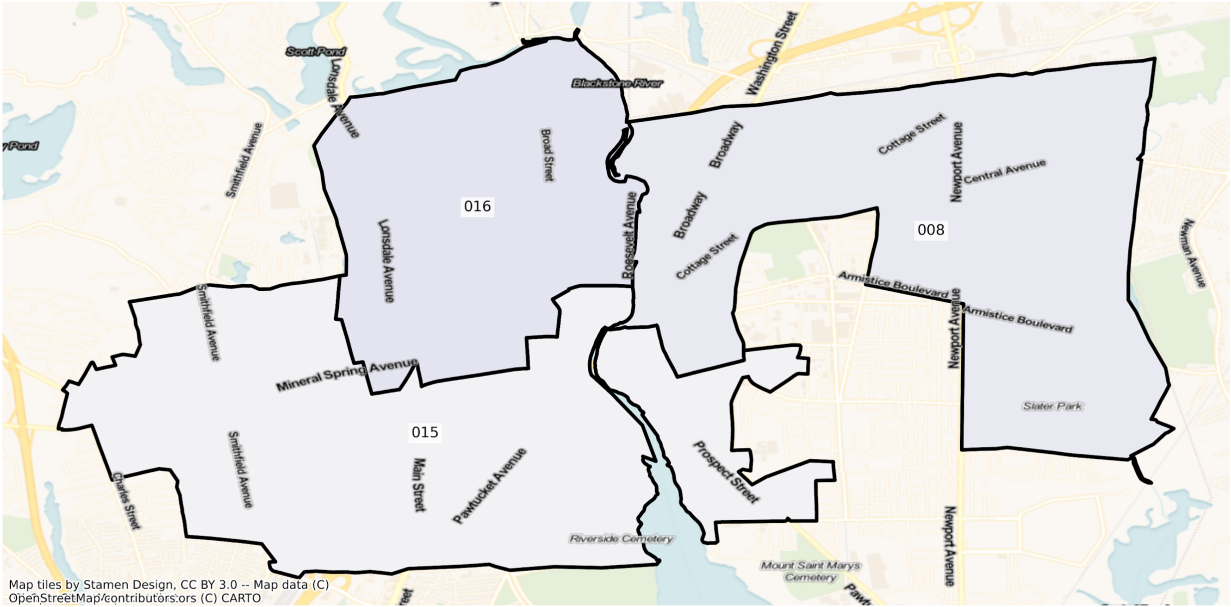


RI Pawtucket State Senate Districts  
 Population % Change from 2010 to 2020  
 Ethnicity: Not Latino African American alone



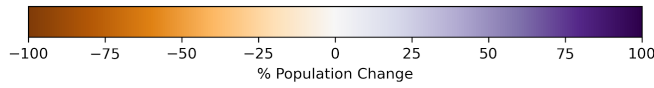
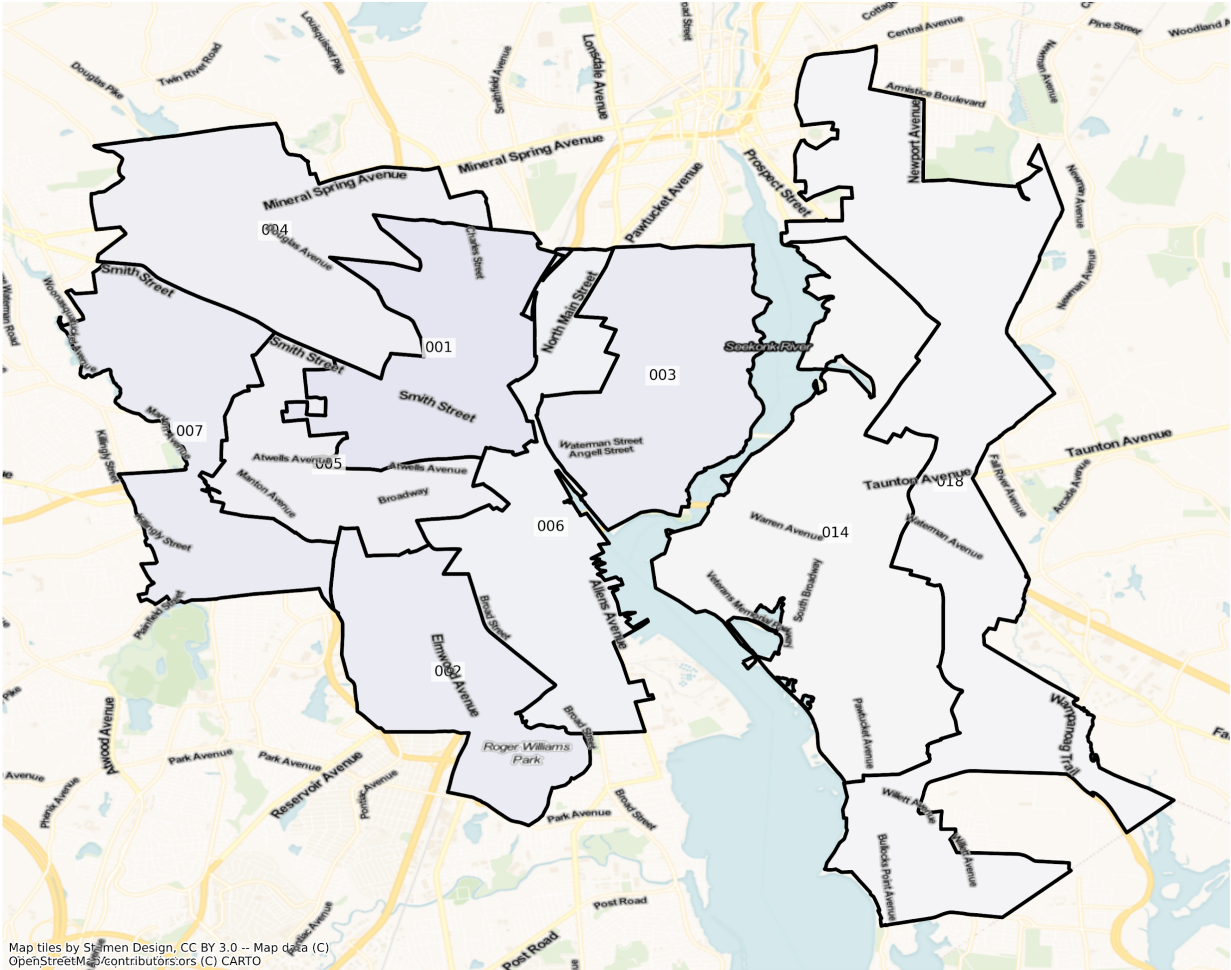


RI Pawtucket State Senate Districts  
Population % Change from 2010 to 2020  
Ethnicity: Not Latino Asian alone



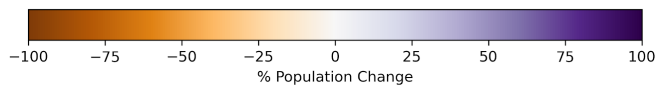
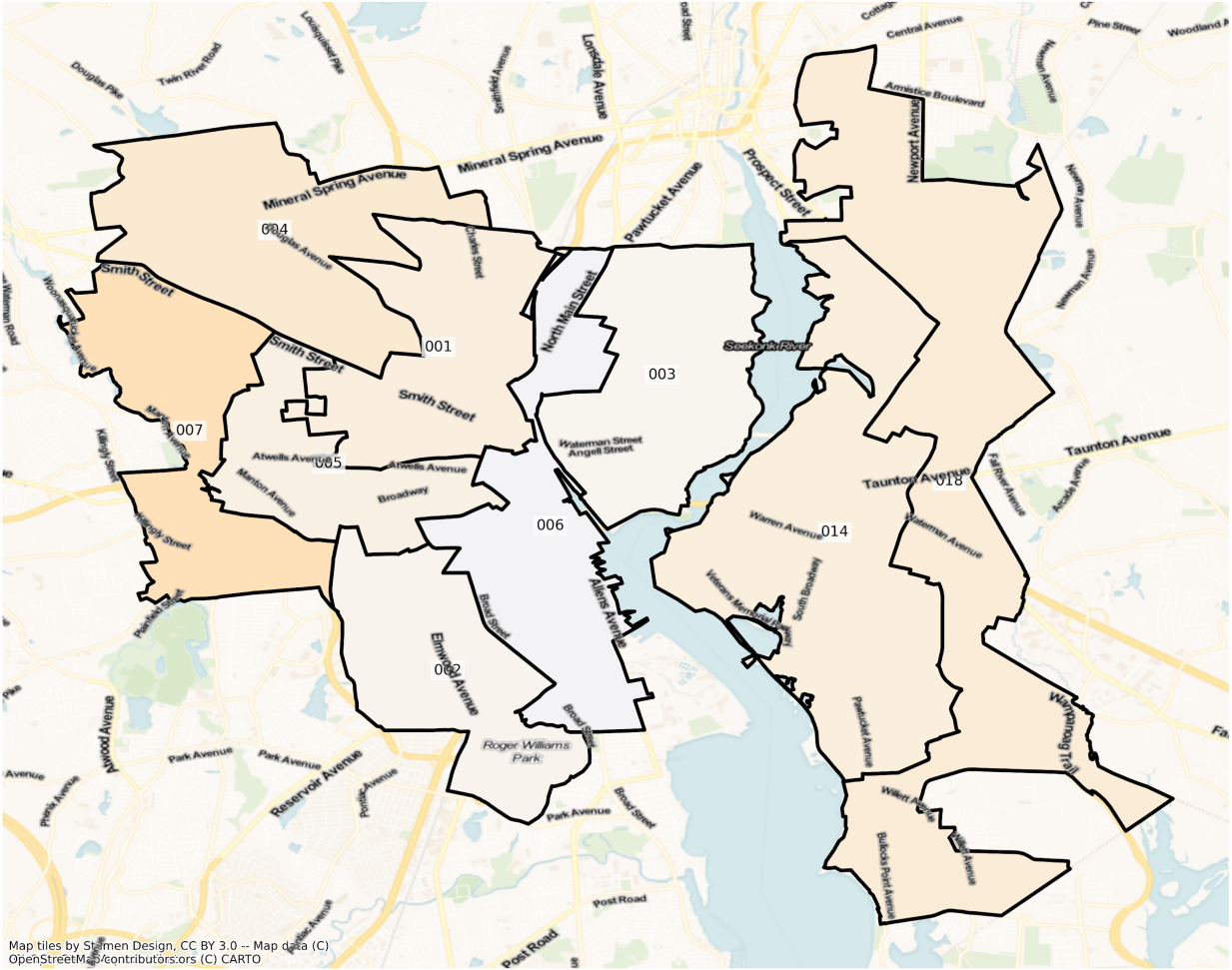
# Providence

RI Providence State Senate Districts  
Population % Change from 2010 to 2020  
Total Population

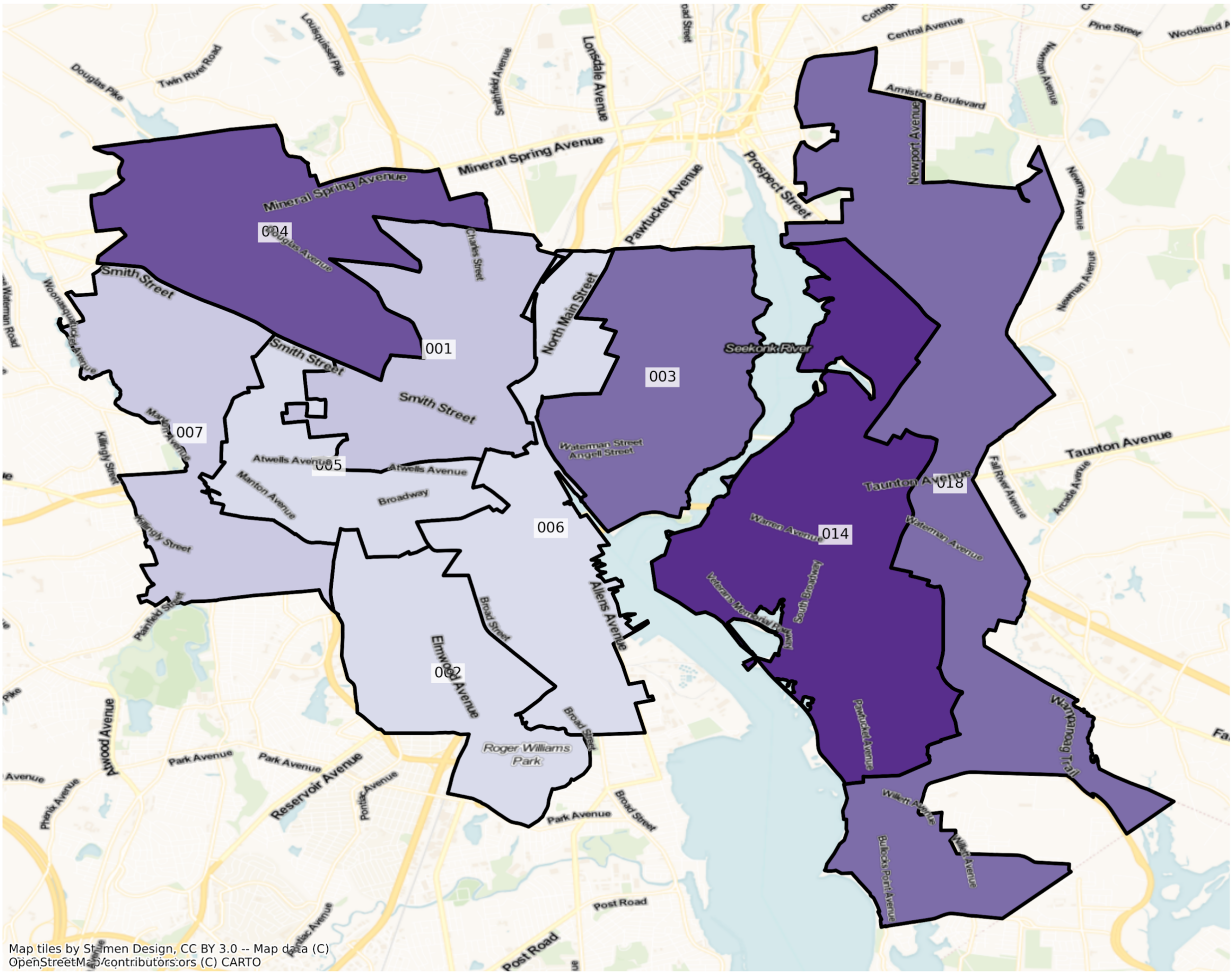




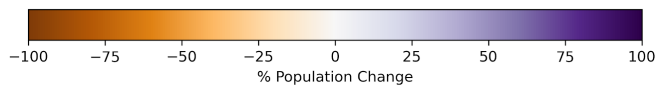
RI Providence State Senate Districts  
Population % Change from 2010 to 2020  
Ethnicity: Not Latino White alone



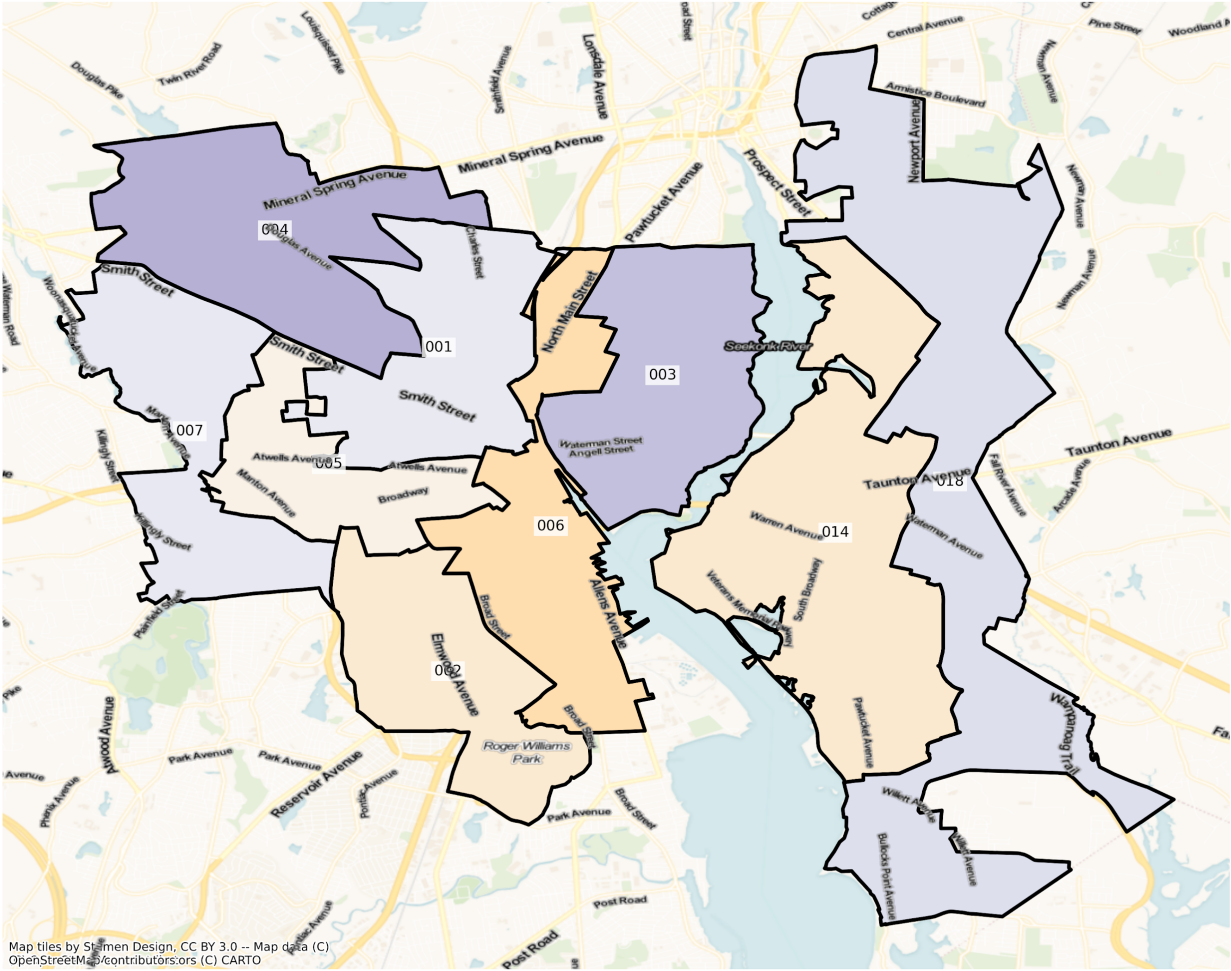
RI Providence State Senate Districts  
Population % Change from 2010 to 2020  
Ethnicity: Hispanic or Latino



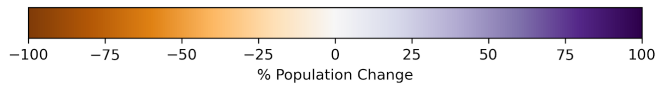
Map tiles by Stamen Design, CC BY 3.0 -- Map data (C) OpenStreetMap contributors, (C) CARTO



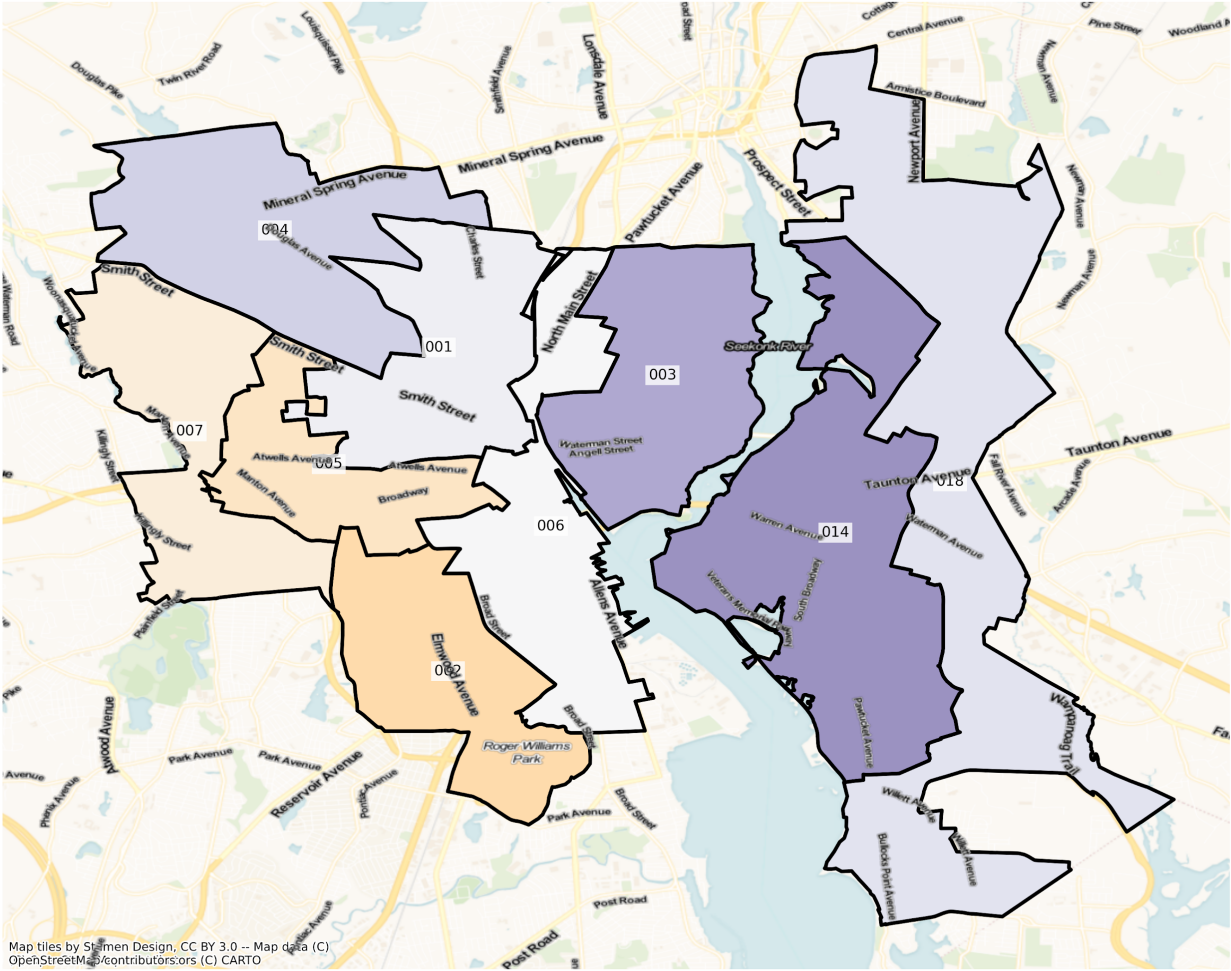
RI Providence State Senate Districts  
Population % Change from 2010 to 2020  
Ethnicity: Not Latino African American alone



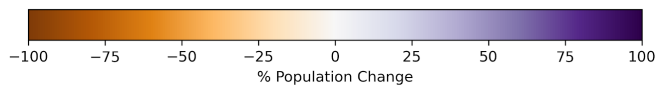
Map tiles by Stamen Design, CC BY 3.0 -- Map data (C) OpenStreetMap contributors, (C) CARTO



RI Providence State Senate Districts  
 Population % Change from 2010 to 2020  
 Ethnicity: Not Latino Asian alone



Map tiles by Stamen Design, CC BY 3.0 -- Map data (C) OpenStreetMap contributors, (C) CARTO



2010 Population by Race and Ethnicity at the State Senate District Level

DISTRICT	Total Population	Hispanic or Latino Origin	White Alone, not Latino	African American Alone, not Latino	AIAN Alone, not Latino <sup>1</sup>	Asian Alone, not Latino	NHPI Alone, not Latino <sup>2</sup>	Other Alone, not Latino	Two or More, not Latino
1	28161	10282	10222	4560	213	1419	13	402	1050
2	28079	16288	3553	4151	182	2953	7	174	771
3	28398	1409	22028	949	54	2800	11	180	967
4	28202	3217	21211	2184	113	730	8	212	527
5	28356	12202	9651	3756	269	1273	31	208	966
6	27211	11727	6298	5902	276	1368	4	529	1107
7	28400	13853	10052	2525	149	1046	17	164	594
8	27142	4755	18117	2273	83	282	14	665	953
9	27765	1414	24517	559	59	601	8	54	553
10	26995	478	25643	247	48	198	4	26	351
11	26716	589	24934	302	40	377	8	46	420
12	27191	976	24150	806	52	547	23	82	555
13	27808	2014	22545	1526	165	342	13	145	1058
14	27128	1228	21272	1884	119	489	5	968	1163
15	27093	5602	13464	4095	126	554	8	1823	1421
16	27169	14089	7035	3131	101	201	11	1479	1122
17	27012	969	24456	409	29	676	0	89	384
18	26890	2121	21680	1392	111	335	11	453	787
19	27218	1440	24181	384	34	624	9	116	430
20	27092	2625	21792	862	44	1073	13	56	627
21	27301	376	26211	140	49	219	0	38	268
22	28320	987	26114	422	41	365	2	77	312
23	28176	471	27126	97	32	134	2	36	278
24	27014	3543	19650	1459	73	1383	0	83	823
25	28088	1635	24939	517	26	572	3	64	332
26	27254	3534	20898	821	62	1402	24	64	449
27	28167	1846	23658	1226	53	981	7	58	338

28	27738	3651	19660	1656	103	1843	5	135	685
29	27129	1003	24591	451	59	525	4	52	444
30	27418	805	25198	353	97	474	10	48	433
31	28338	1128	25106	704	47	851	1	65	436
32	27106	493	25458	174	32	521	0	61	367
33	28230	586	26825	177	49	260	5	5	323
34	28236	560	26690	164	208	191	3	29	391
35	28043	481	26210	195	121	666	8	41	321
36	27665	675	25742	263	146	329	3	56	451
37	27982	846	24787	611	330	794	5	66	543
38	28085	707	25874	220	220	579	5	23	457

<sup>1</sup>American Indian and Alaska Native Alone, not Latino

<sup>2</sup>Native Hawaiian and Pacific Islander Alone, not Latino

2020 Population by Race and Ethnicity at the State Senate District Level

DISTRICT	Total Population	Hispanic or Latino Origin	White Alone, not Latino	African American Alone, not Latino	AIAN Alone, not Latino <sup>1</sup>	Asian Alone, not Latino	NHPI Alone, not Latino <sup>2</sup>	Other Alone, not Latino	Two or More, not Latino
1	31548	13282	9475	5008	166	1504	5	475	1633
2	30083	19393	3426	3683	164	2296	4	279	838
3	30946	2272	21406	1242	52	3942	19	326	1687
4	29875	5417	18802	3015	79	905	9	323	1325
5	30005	14567	9101	3577	145	1078	10	276	1251
6	28400	13848	6446	4642	213	1369	19	429	1434
7	30740	17573	8114	2786	115	953	4	265	930
8	28485	6742	14936	2909	58	309	16	845	2670
9	29043	2510	23299	730	114	759	8	161	1462
10	27558	876	24938	334	46	294	6	108	956
11	27385	1174	23925	573	75	412	8	84	1134
12	28514	1763	23434	909	50	661	22	258	1417
13	28627	2864	22040	1356	172	450	13	242	1490



14	27544	2184	19607	1658	97	728	4	919	2347
15	28763	7112	11328	4280	68	572	11	1426	3966
16	31319	17723	6352	2583	91	227	7	1339	2997
17	28771	1879	23840	605	34	1009	6	224	1174
18	27380	3427	19607	1627	84	382	10	459	1784
19	29386	2572	23731	574	38	1024	6	290	1151
20	28962	4356	19769	1285	82	1871	11	200	1388
21	27508	763	25244	183	26	268	1	104	919
22	29349	1873	23569	736	48	1851	5	221	1046
23	28831	982	26342	171	23	168	7	116	1022
24	28090	5290	18068	1905	63	1173	8	193	1390
25	28866	3754	22282	907	27	862	7	124	903
26	27958	5832	18279	1048	58	1737	4	155	845
27	28952	3247	21712	1273	73	1586	12	124	925
28	28883	6534	16354	1875	85	2444	7	261	1323
29	27685	1822	23370	557	49	658	0	116	1113
30	27165	1428	23370	438	74	593	7	105	1150
31	28276	1872	23112	718	44	1310	6	161	1053
32	27894	951	24342	309	9	1035	1	123	1124
33	29286	1012	26128	271	64	524	6	113	1168
34	28720	689	26266	130	177	260	5	128	1065
35	28238	931	24922	232	62	1021	11	104	955
36	28166	958	25135	319	149	484	14	99	1008
37	30065	1397	25431	688	316	992	4	129	1108
38	28971	1195	25499	242	220	651	17	85	1062

<sup>1</sup>American Indian and Alaska Native Alone, not Latino

<sup>2</sup>Native Hawaiian and Pacific Islander Alone, not Latino

Percent Change of Population from 2010 to 2020 by Race and Ethnicity at State Senate District Level

DISTRICT	Total Population	Hispanic or Latino Origin	White Alone, not Latino	African American Alone, not Latino	AIAN Alone, not Latino <sup>1</sup>	Asian Alone, not Latino	NHPI Alone, not Latino <sup>2</sup>	Other Alone, not Latino	Two or More, not Latino
1	12.03%	29.18%	-7.31%	9.82%	-22.07%	5.99%	-61.54%	18.16%	55.52%
2	7.14%	19.06%	-3.57%	-11.27%	-9.89%	-22.25%	-42.86%	60.34%	8.69%
3	8.97%	61.25%	-2.82%	30.87%	-3.70%	40.79%	72.73%	81.11%	74.46%
4	5.93%	68.39%	-11.36%	38.05%	-30.09%	23.97%	12.50%	52.36%	151.42%
5	5.82%	19.38%	-5.70%	-4.77%	-46.10%	-15.32%	-67.74%	32.69%	29.50%
6	4.37%	18.09%	2.35%	-21.35%	-22.83%	0.07%	375.00%	-18.90%	29.54%
7	8.24%	26.85%	-19.28%	10.34%	-22.82%	-8.89%	-76.47%	61.59%	56.57%
8	4.95%	41.79%	-17.56%	27.98%	-30.12%	9.57%	14.29%	27.07%	180.17%
9	4.60%	77.51%	-4.97%	30.59%	93.22%	26.29%	0.00%	198.15%	164.38%
10	2.09%	83.26%	-2.75%	35.22%	-4.17%	48.48%	50.00%	315.38%	172.36%
11	2.50%	99.32%	-4.05%	89.74%	87.50%	9.28%	0.00%	82.61%	170.00%
12	4.87%	80.64%	-2.96%	12.78%	-3.85%	20.84%	-4.35%	214.63%	155.32%
13	2.95%	42.20%	-2.24%	-11.14%	4.24%	31.58%	0.00%	66.90%	40.83%
14	1.53%	77.85%	-7.83%	-12.00%	-18.49%	48.88%	-20.00%	-5.06%	101.81%
15	6.16%	26.95%	-15.86%	4.52%	-46.03%	3.25%	37.50%	-21.78%	179.10%
16	15.27%	25.79%	-9.71%	-17.50%	-9.90%	12.94%	-36.36%	-9.47%	167.11%
17	6.51%	93.91%	-2.52%	47.92%	17.24%	49.26%	inf	151.69%	205.73%
18	1.82%	61.57%	-9.56%	16.88%	-24.32%	14.03%	-9.09%	1.32%	126.68%
19	7.97%	78.61%	-1.86%	49.48%	11.76%	64.10%	-33.33%	150.00%	167.67%
20	6.90%	65.94%	-9.28%	49.07%	86.36%	74.37%	-15.38%	257.14%	121.37%
21	0.76%	102.93%	-3.69%	30.71%	-46.94%	22.37%	inf	173.68%	242.91%
22	3.63%	89.77%	-9.75%	74.41%	17.07%	407.12%	150.00%	187.01%	235.26%
23	2.32%	108.49%	-2.89%	76.29%	-28.13%	25.37%	250.00%	222.22%	267.63%
24	3.98%	49.31%	-8.05%	30.57%	-13.70%	-15.18%	inf	132.53%	68.89%
25	2.77%	129.60%	-10.65%	75.44%	3.85%	50.70%	133.33%	93.75%	171.99%
26	2.58%	65.03%	-12.53%	27.65%	-6.45%	23.89%	-83.33%	142.19%	88.20%
27	2.79%	75.89%	-8.23%	3.83%	37.74%	61.67%	71.43%	113.79%	173.67%



28	4.13%	78.96%	-16.82%	13.22%	-17.48%	32.61%	40.00%	93.33%	93.14%
29	2.05%	81.66%	-4.97%	23.50%	-16.95%	25.33%	-100.00%	123.08%	150.68%
30	-0.92%	77.39%	-7.25%	24.08%	-23.71%	25.11%	-30.00%	118.75%	165.59%
31	-0.22%	65.96%	-7.94%	1.99%	-6.38%	53.94%	500.00%	147.69%	141.51%
32	2.91%	92.90%	-4.38%	77.59%	-71.88%	98.66%	inf	101.64%	206.27%
33	3.74%	72.70%	-2.60%	53.11%	30.61%	101.54%	20.00%	2160.00%	261.61%
34	1.71%	23.04%	-1.59%	-20.73%	-14.90%	36.13%	66.67%	341.38%	172.38%
35	0.70%	93.56%	-4.91%	18.97%	-48.76%	53.30%	37.50%	153.66%	197.51%
36	1.81%	41.93%	-2.36%	21.29%	2.05%	47.11%	366.67%	76.79%	123.50%
37	7.44%	65.13%	2.60%	12.60%	-4.24%	24.94%	-20.00%	95.45%	104.05%
38	3.15%	69.02%	-1.45%	10.00%	0.00%	12.44%	240.00%	269.57%	132.39%

<sup>1</sup>American Indian and Alaska Native Alone, not Latino

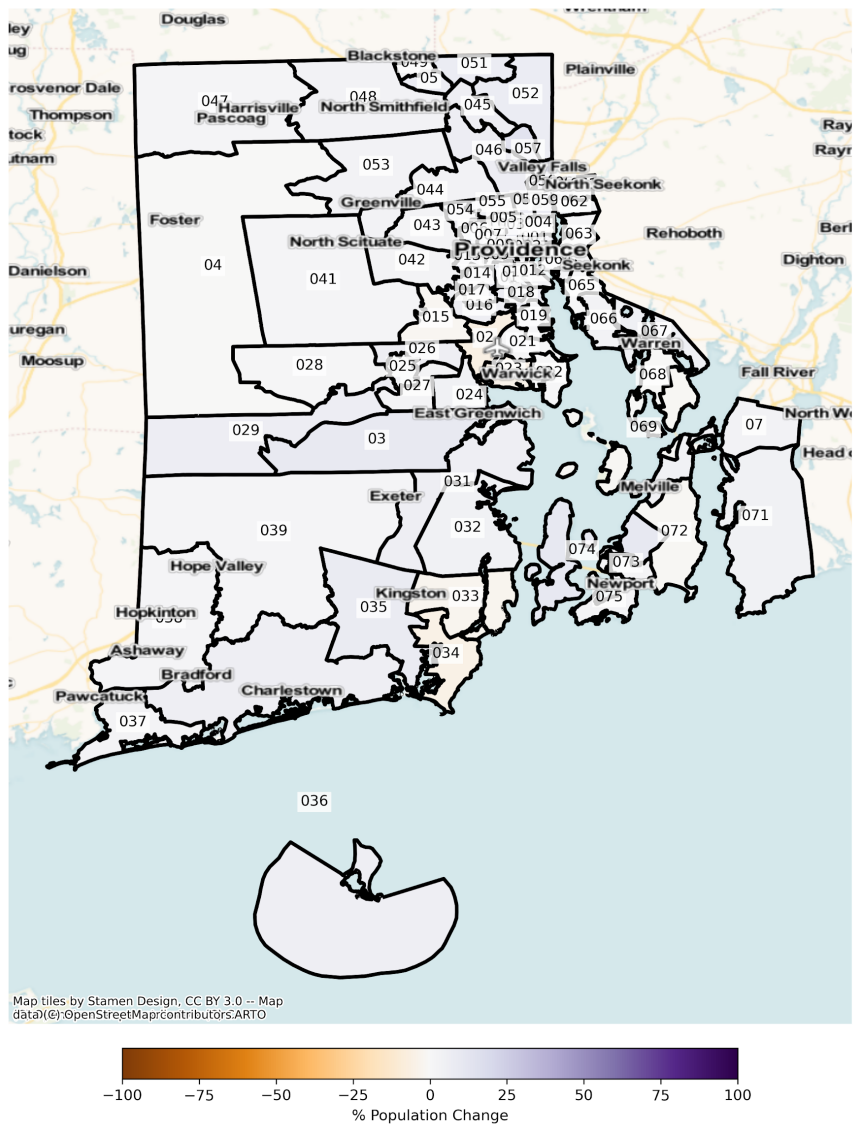
<sup>2</sup>Native Hawaiian and Pacific Islander Alone, not Latino

# State House

The charts below display the percent change in population from 2010 to 2020 for the listed group. Please note that the color bars are fixed to be from -100% to 100% and these maps are displayed in brown to purple. If the percent change in population was outside of this range, the color scheme changes to red to green to indicate a change.

## Total Population

RI State House Districts  
Population % Change from 2010 to 2020  
Total Population



Total Population from 2010 to 2020 at the State House District Level

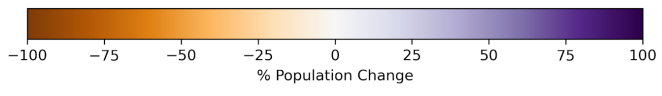
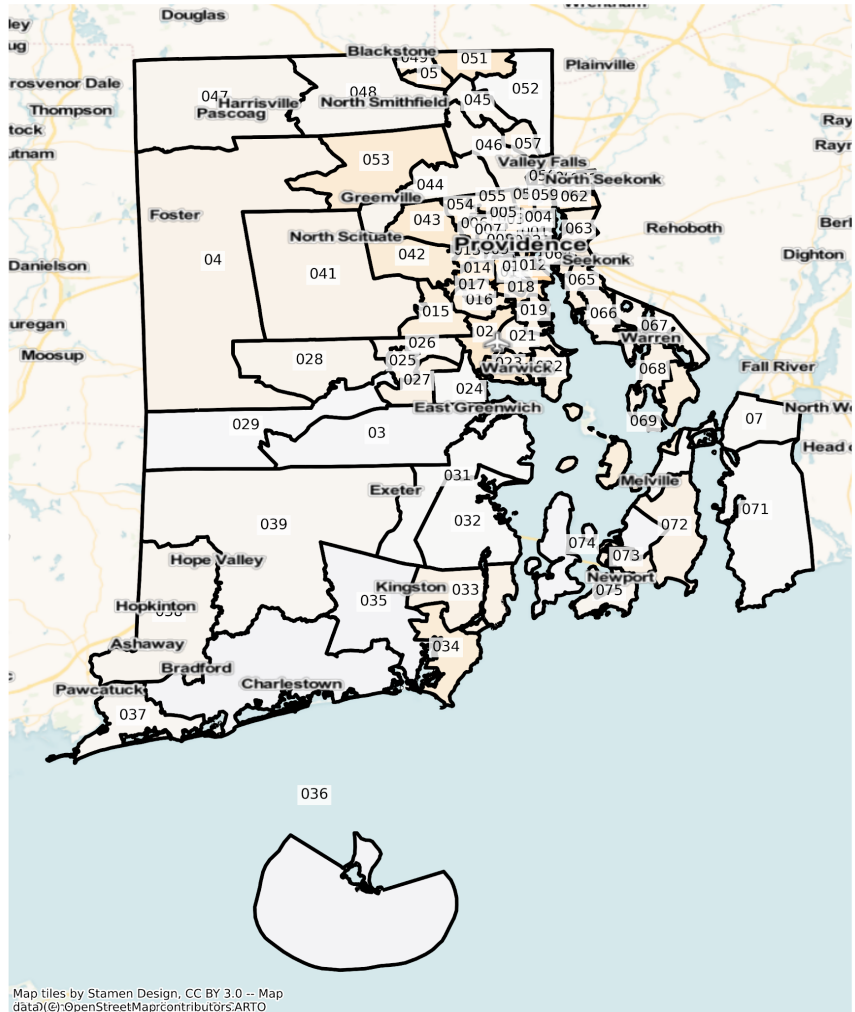
DISTRICT	Total Population 2010	Total Population 2020	Total Population % Change
1	13881	16539	19.15%
2	13821	14182	2.61%
3	13949	15042	7.84%
4	13713	13879	1.21%
5	14328	15413	7.57%
6	14226	15303	7.57%
7	14211	15373	8.18%
8	13987	15534	11.06%
9	13953	14396	3.17%
10	14169	14913	5.25%
11	14235	15319	7.62%
12	14094	14560	3.31%
13	13792	14942	8.34%
14	14342	15298	6.67%
15	14424	14111	-2.17%
16	13831	14588	5.47%
17	14039	14781	5.29%
18	14222	15146	6.50%
19	13384	13603	1.64%
20	13931	13164	-5.51%
21	13767	13969	1.47%
22	13678	13769	0.67%
23	14006	13454	-3.94%
24	13658	14263	4.43%
25	13714	14325	4.46%
26	13705	14555	6.20%
27	14098	14459	2.56%
28	13886	14042	1.12%
29	14314	15244	6.50%
30	14324	15674	9.42%

31	14331	15135	5.61%
32	14007	14562	3.96%
33	14337	13973	-2.54%
34	14014	13280	-5.24%
35	14186	15299	7.85%
36	13719	14487	5.60%
37	14241	14645	2.84%
38	13785	14014	1.66%
39	13692	13944	1.84%
40	14383	14272	-0.77%
41	14344	14661	2.21%
42	14350	14795	3.10%
43	13811	14224	2.99%
44	14342	14840	3.47%
45	14077	14929	6.05%
46	14333	15268	6.52%
47	14378	14665	2.00%
48	14367	14924	3.88%
49	14059	14442	2.72%
50	13769	14769	7.26%
51	14043	15063	7.26%
52	14232	15276	7.34%
53	14320	14796	3.32%
54	14272	15203	6.52%
55	13920	14573	4.69%
56	14324	16753	16.96%
57	14128	16049	13.60%
58	14352	15339	6.88%
59	13750	14840	7.93%
60	14228	15455	8.62%
61	13752	14173	3.06%

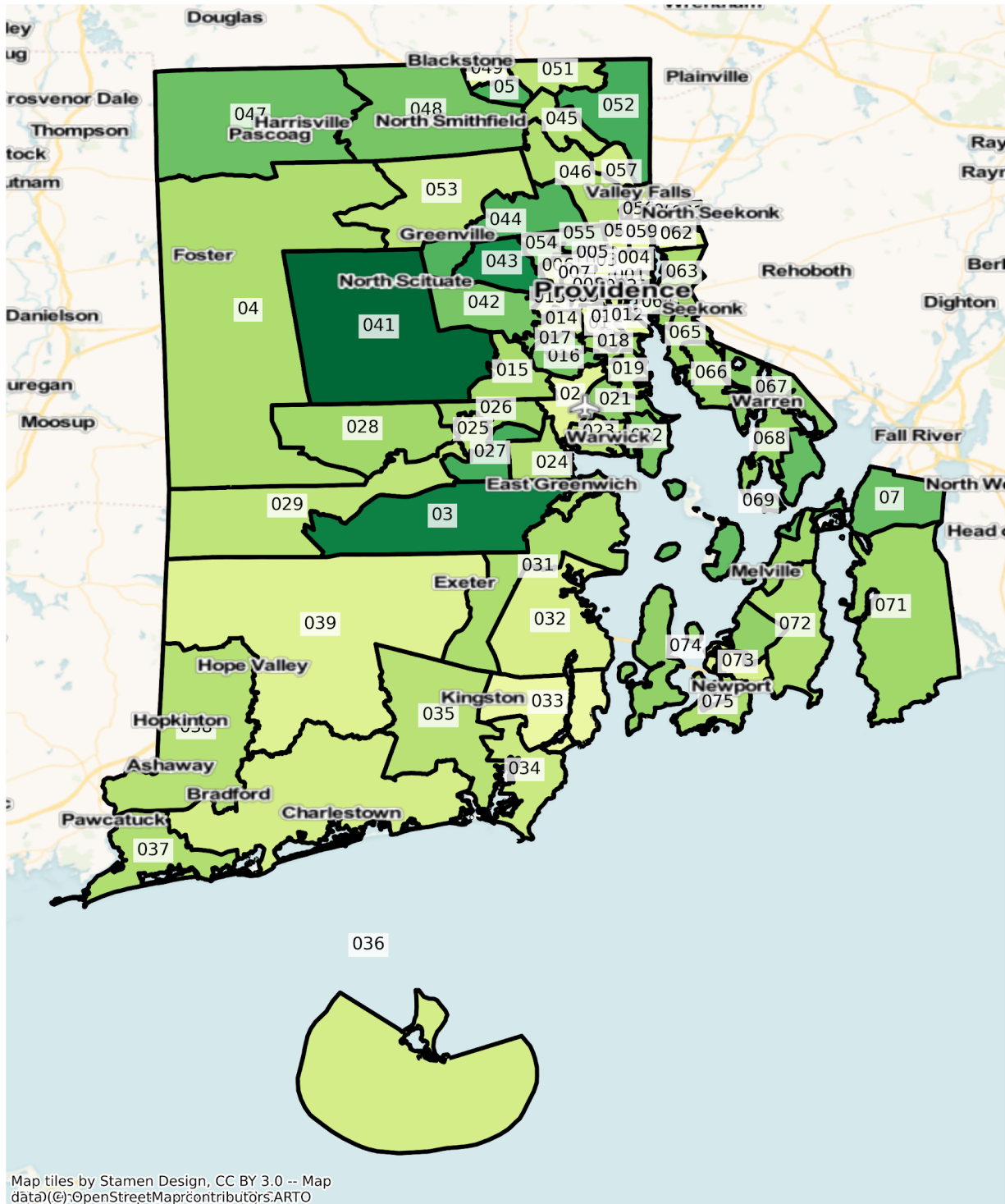
62	14034	14691	4.68%
63	14322	14378	0.39%
64	13808	14059	1.82%
65	14017	14089	0.51%
66	13858	14320	3.33%
67	13711	14372	4.82%
68	13670	13669	-0.01%
69	13793	13637	-1.13%
70	13372	13848	3.56%
71	13736	14321	4.26%
72	13627	13467	-1.17%
73	13715	13989	2.00%
74	13490	14921	10.61%
75	13635	13988	2.59%

# Population by Race and Ethnicity

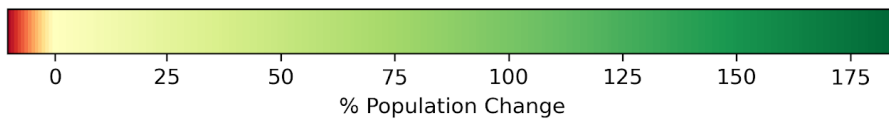
RI State House Districts  
Population % Change from 2010 to 2020  
Ethnicity: Not Latino White alone



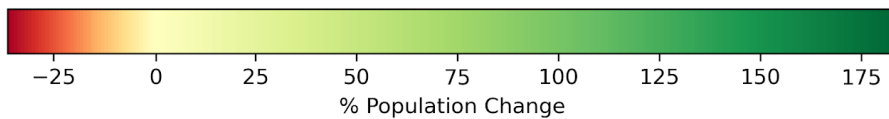
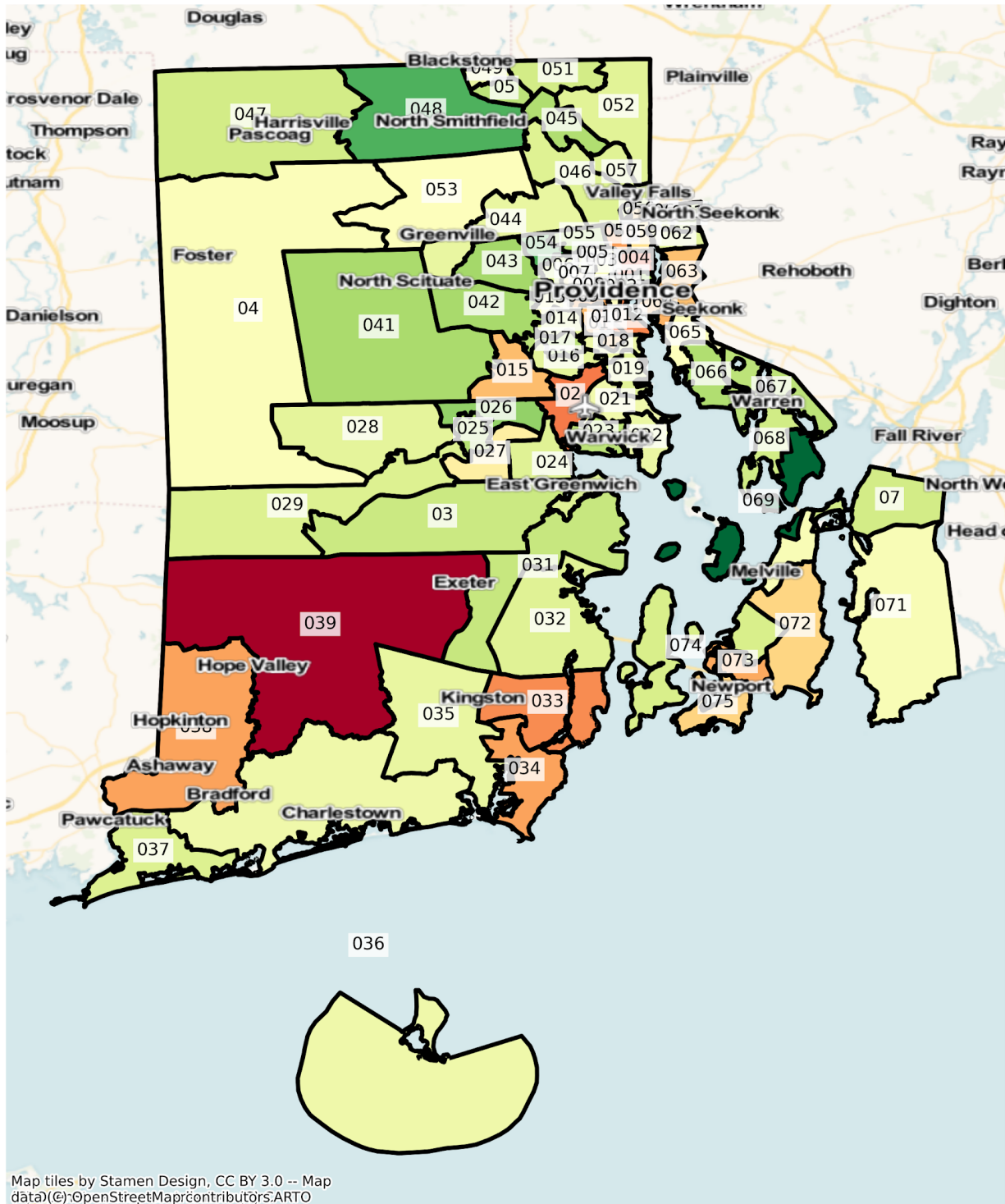
# RI State House Districts Population % Change from 2010 to 2020 Ethnicity: Hispanic or Latino



Map tiles by Stamen Design, CC BY 3.0 -- Map data (c) OpenStreetMap contributors, ARTO

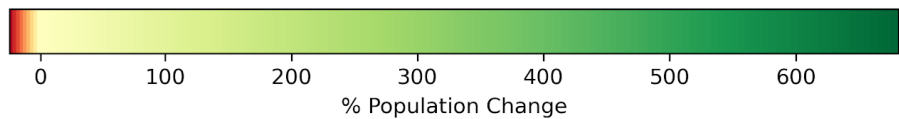
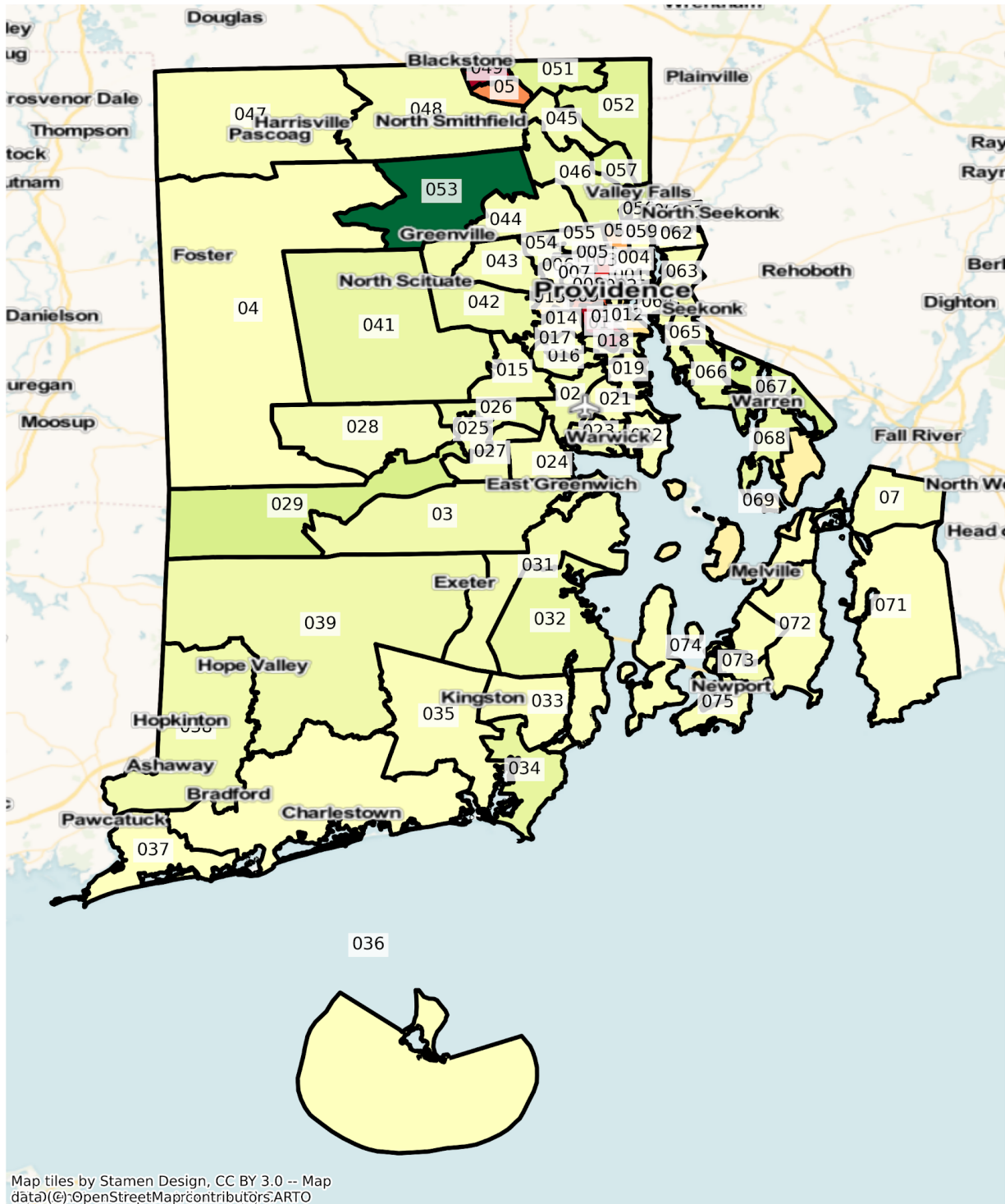


RI State House Districts  
 Population % Change from 2010 to 2020  
 Ethnicity: Not Latino African American alone



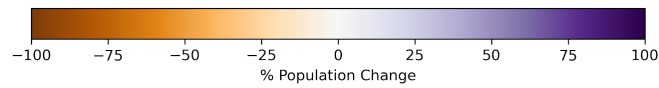
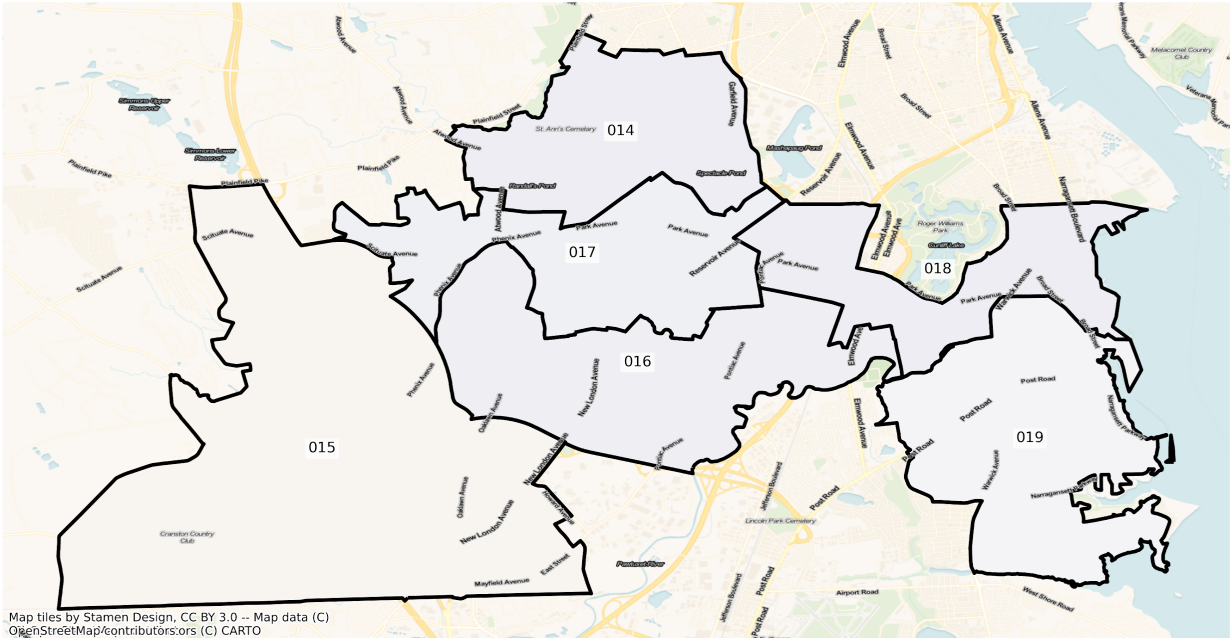


RI State House Districts  
 Population % Change from 2010 to 2020  
 Ethnicity: Not Latino Asian alone

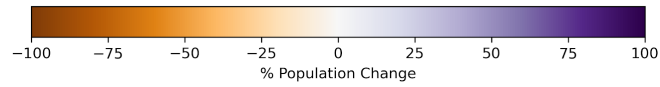
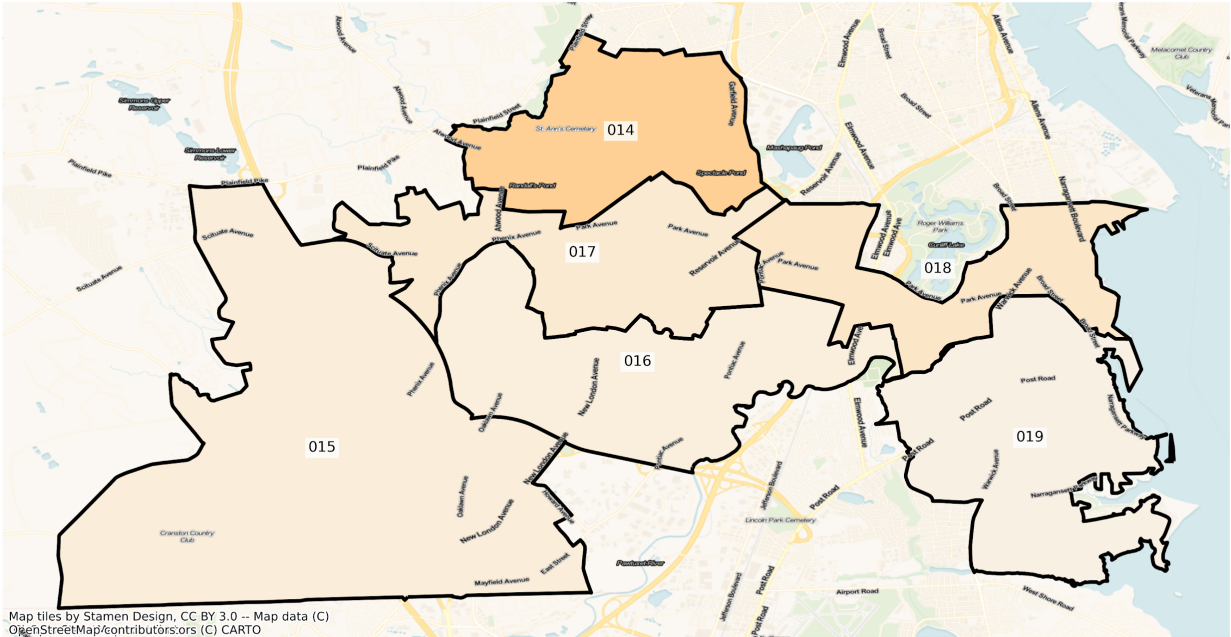


# Cranston

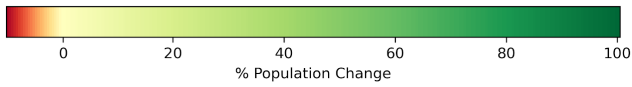
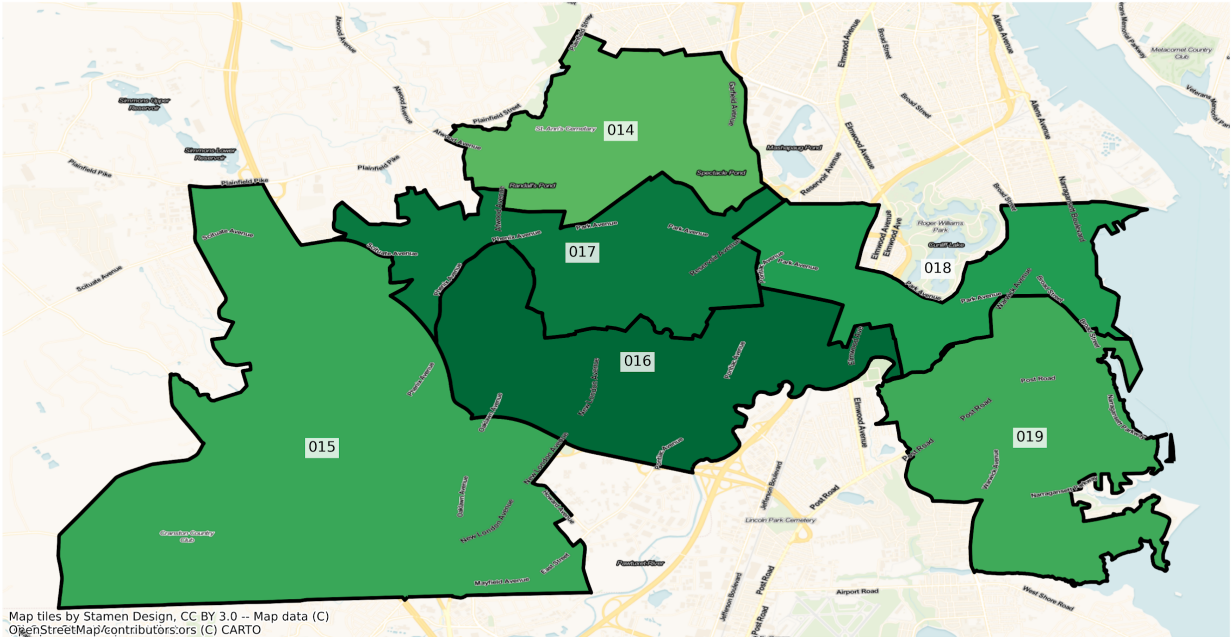
RI Cranston State House Districts  
Population % Change from 2010 to 2020  
Total Population



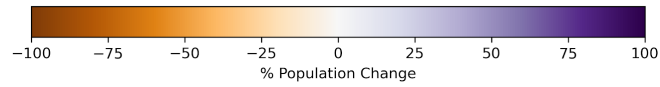
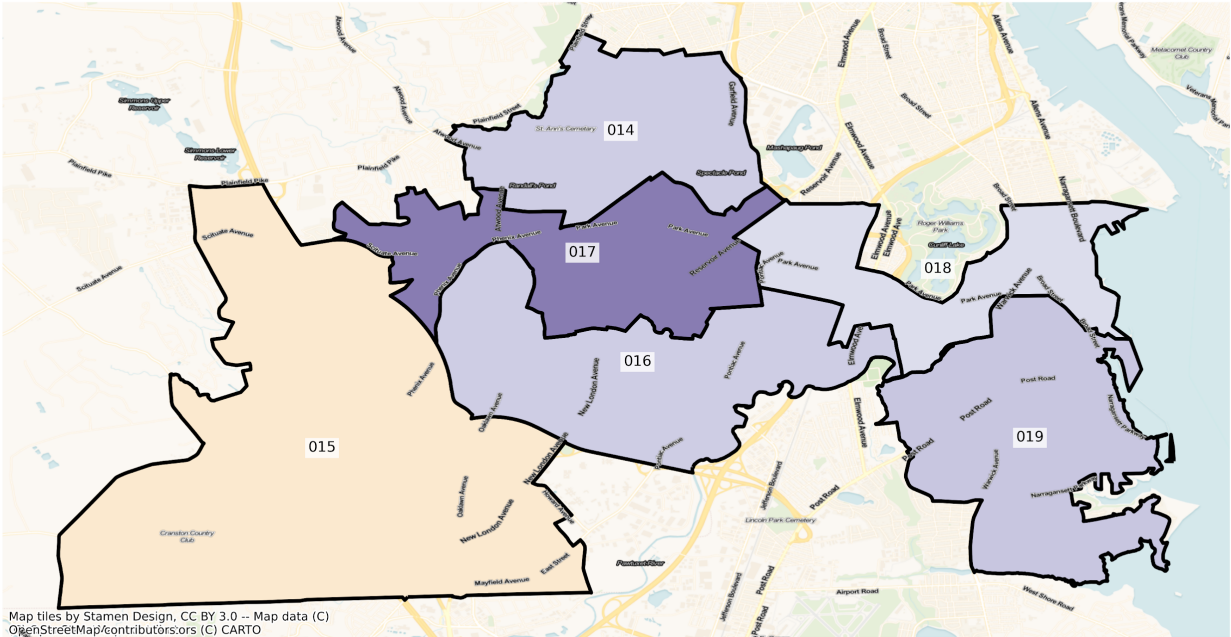
RI Cranston State House Districts  
Population % Change from 2010 to 2020  
Ethnicity: Not Latino White alone



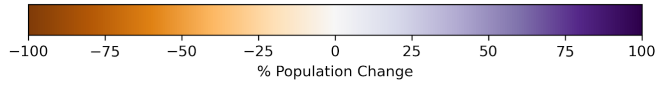
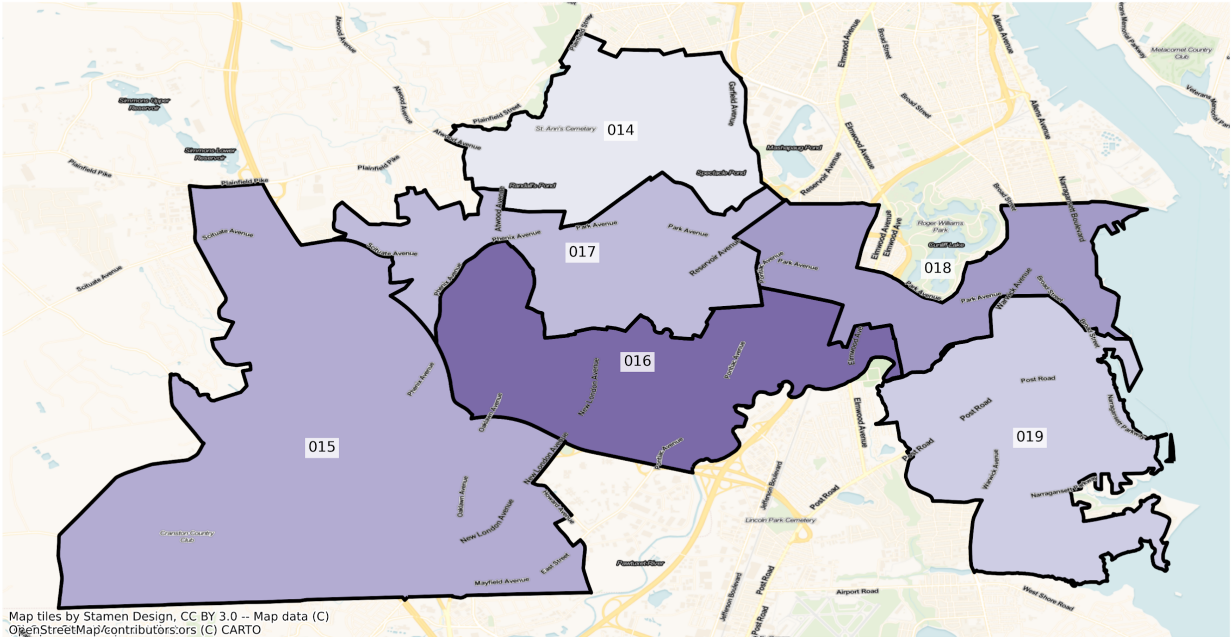
RI Cranston State House Districts  
Population % Change from 2010 to 2020  
Ethnicity: Hispanic or Latino



RI Cranston State House Districts  
Population % Change from 2010 to 2020  
Ethnicity: Not Latino African American alone



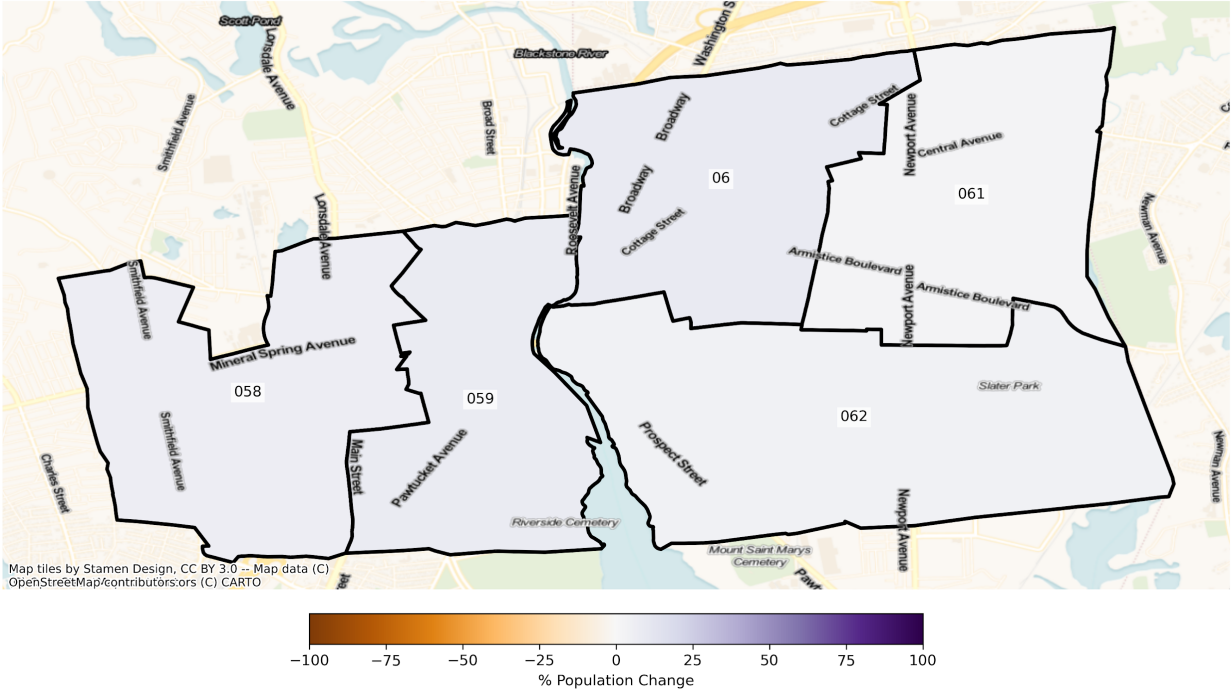
RI Cranston State House Districts  
Population % Change from 2010 to 2020  
Ethnicity: Not Latino Asian alone



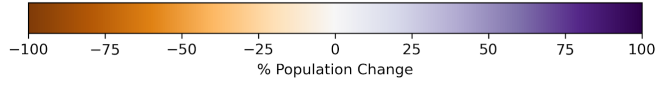
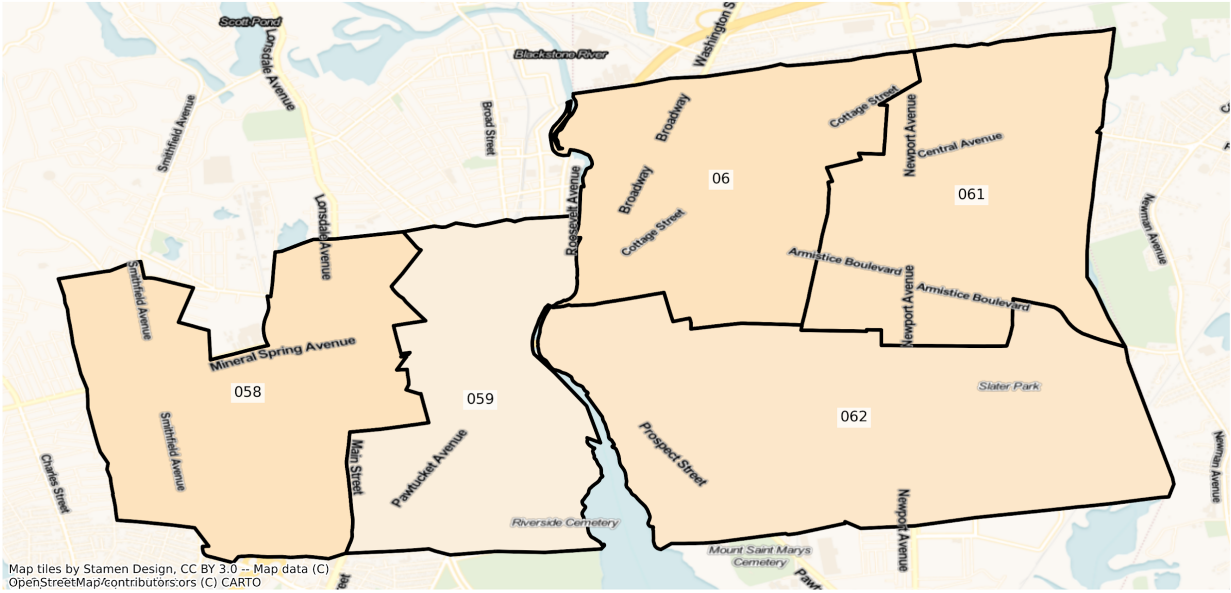


# Pawtucket

RI Pawtucket State House Districts  
Population % Change from 2010 to 2020  
Total Population

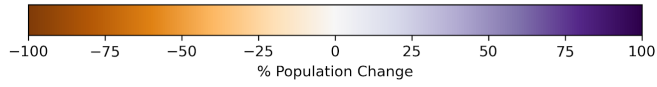
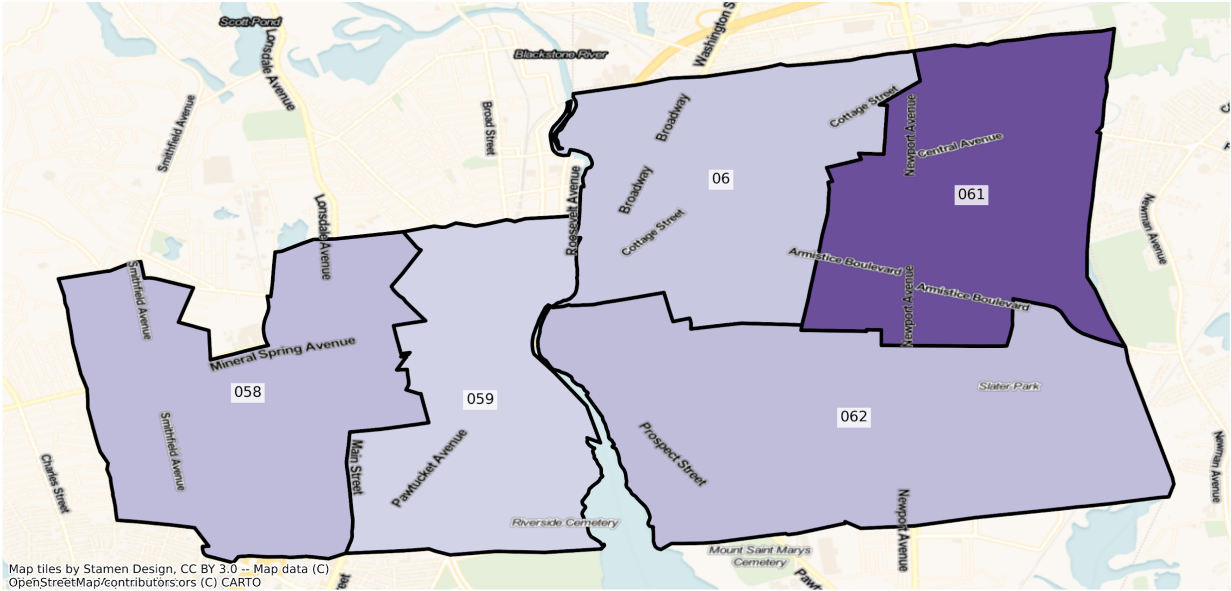


RI Pawtucket State House Districts  
Population % Change from 2010 to 2020  
Ethnicity: Not Latino White alone

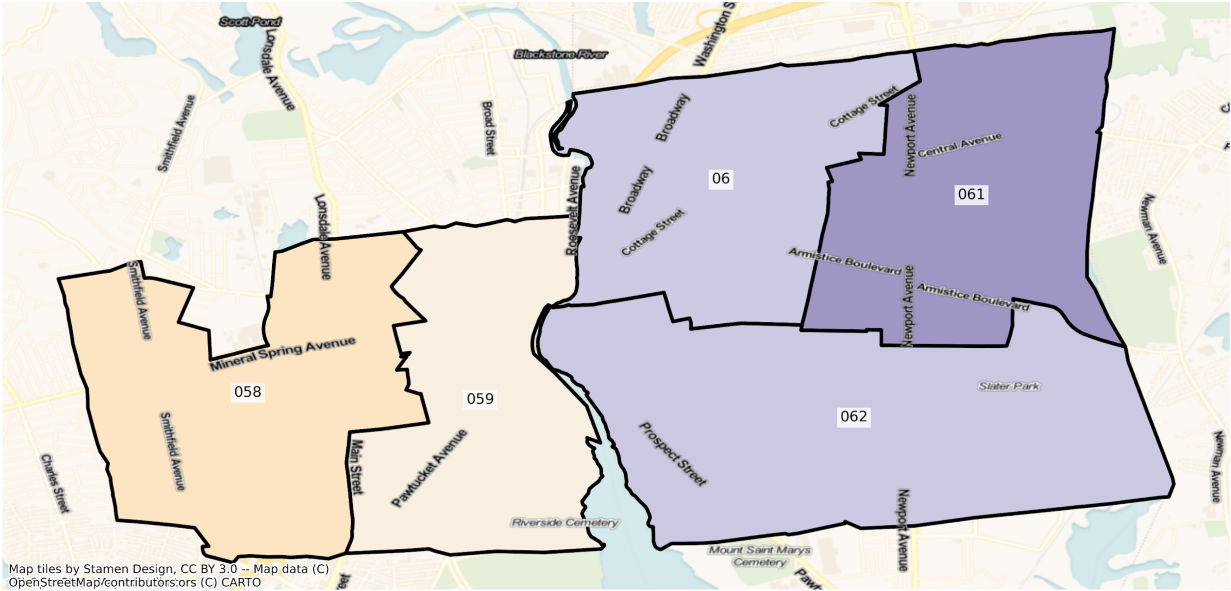




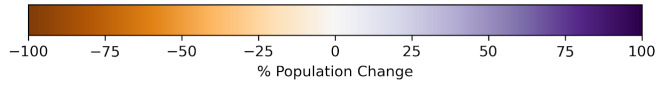
RI Pawtucket State House Districts  
Population % Change from 2010 to 2020  
Ethnicity: Hispanic or Latino



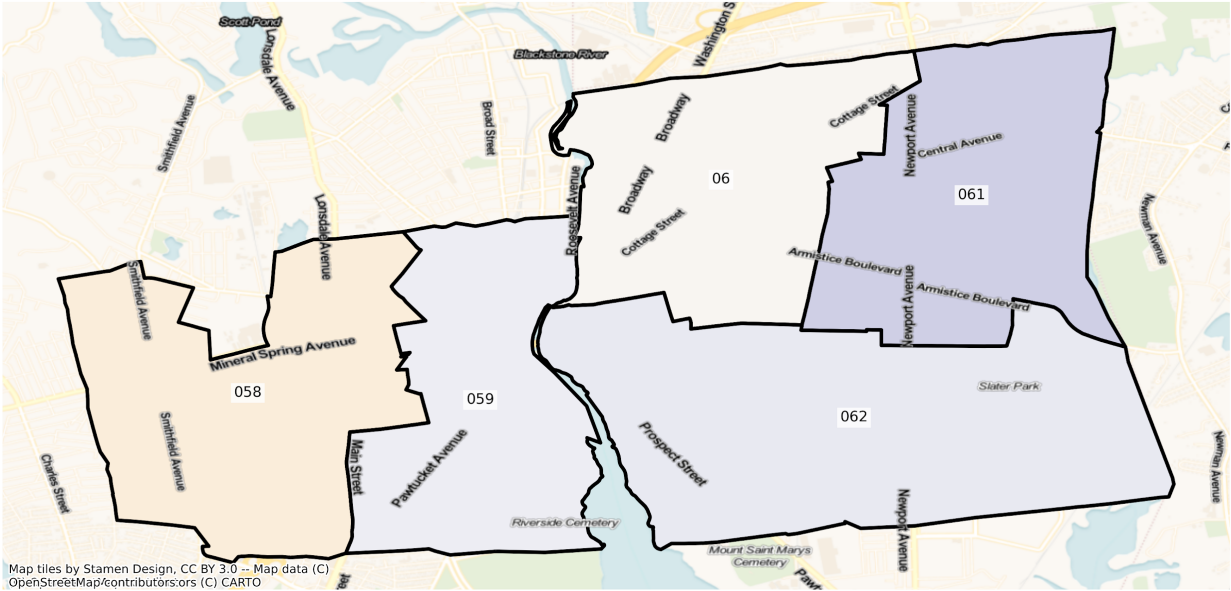
RI Pawtucket State House Districts  
 Population % Change from 2010 to 2020  
 Ethnicity: Not Latino African American alone



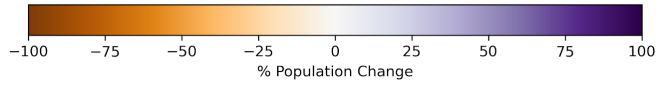
Map tiles by Stamen Design, CC BY 3.0 -- Map data (C) OpenStreetMap/contributors/ors (C) CARTO



RI Pawtucket State House Districts  
 Population % Change from 2010 to 2020  
 Ethnicity: Not Latino Asian alone

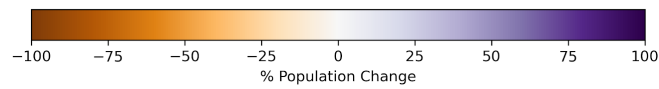
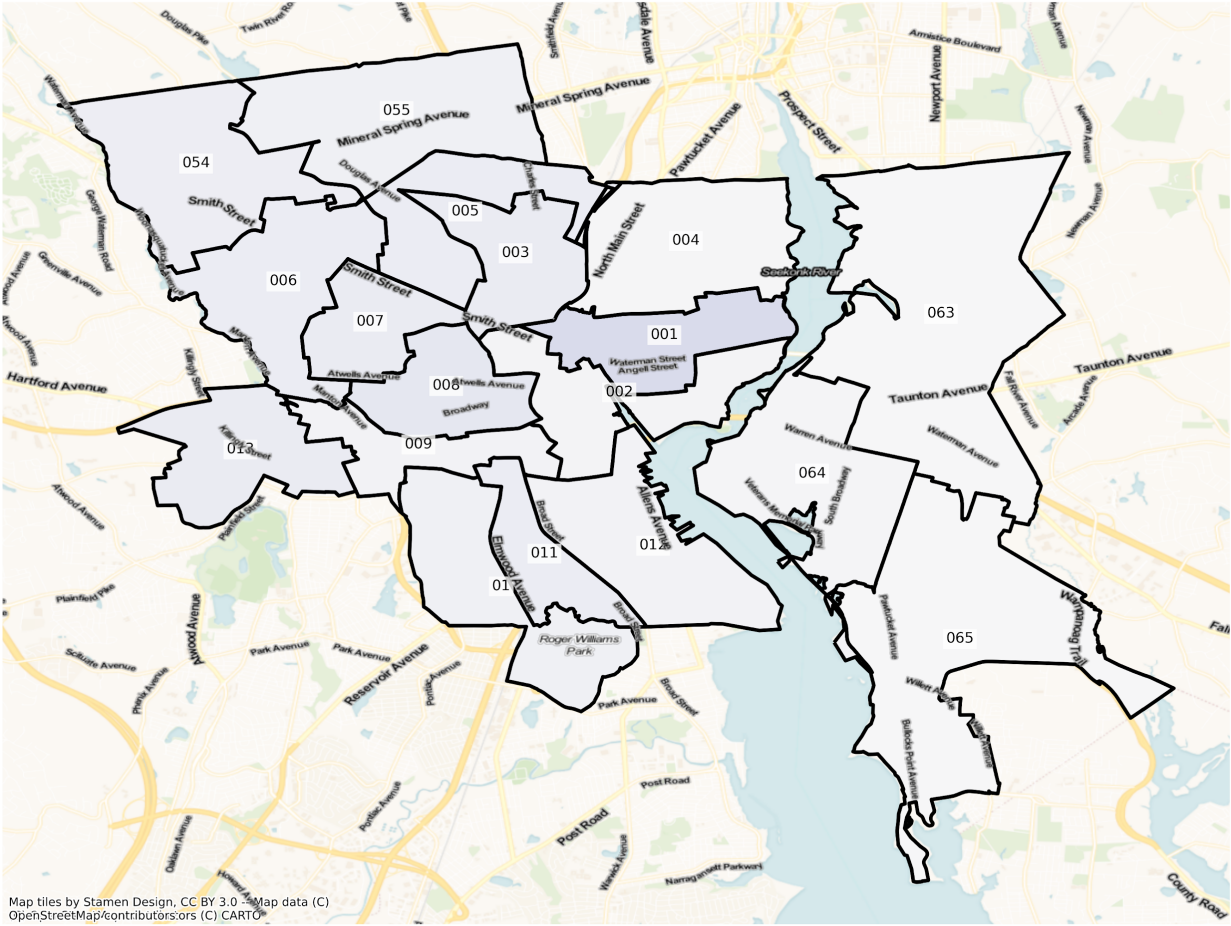


Map tiles by Stamen Design, CC BY 3.0 -- Map data (C) OpenStreetMap/contributors:ors (C) CARTO

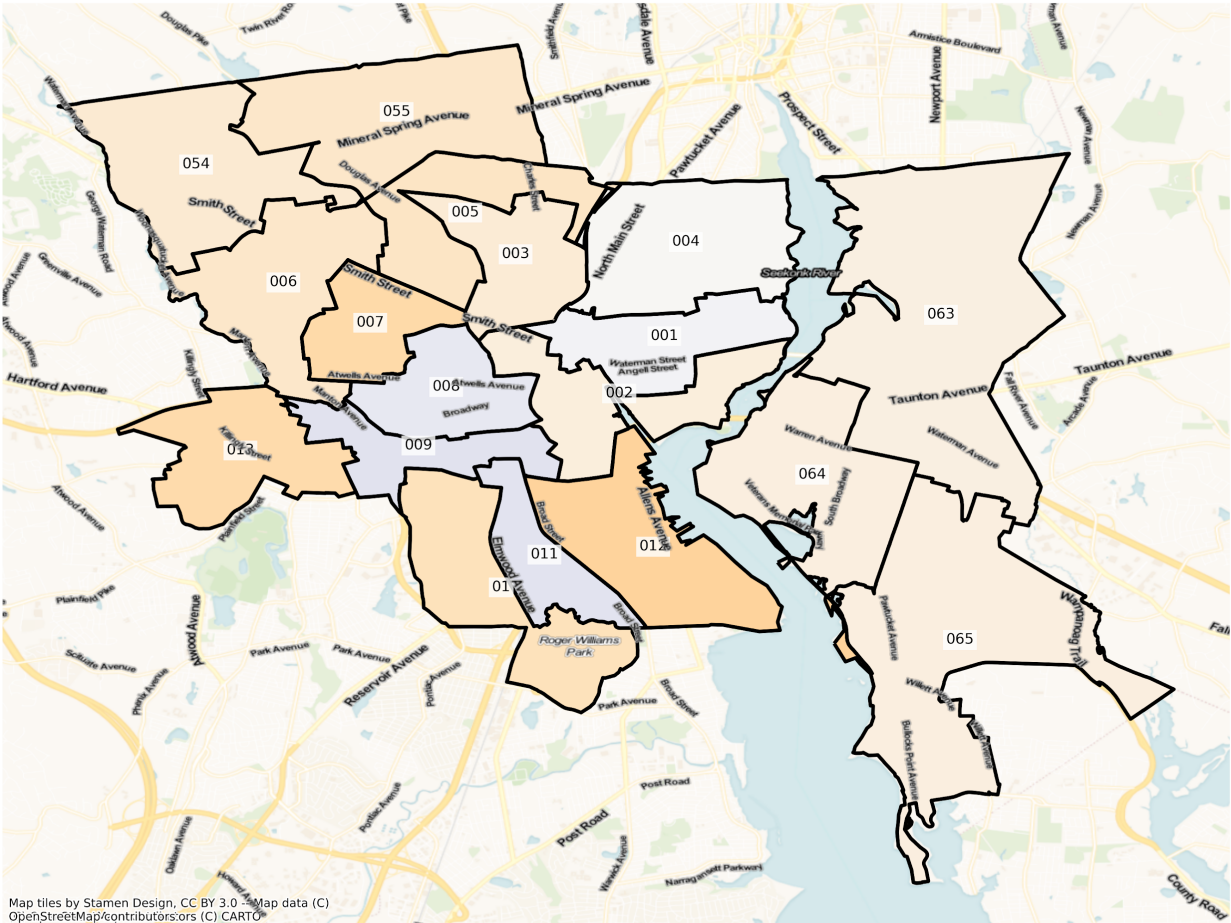


# Providence

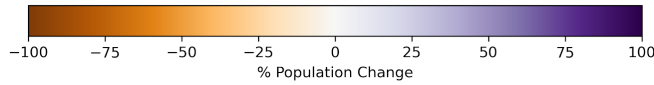
RI Providence State House Districts  
Population % Change from 2010 to 2020  
Total Population



RI Providence State House Districts  
 Population % Change from 2010 to 2020  
 Ethnicity: Not Latino White alone

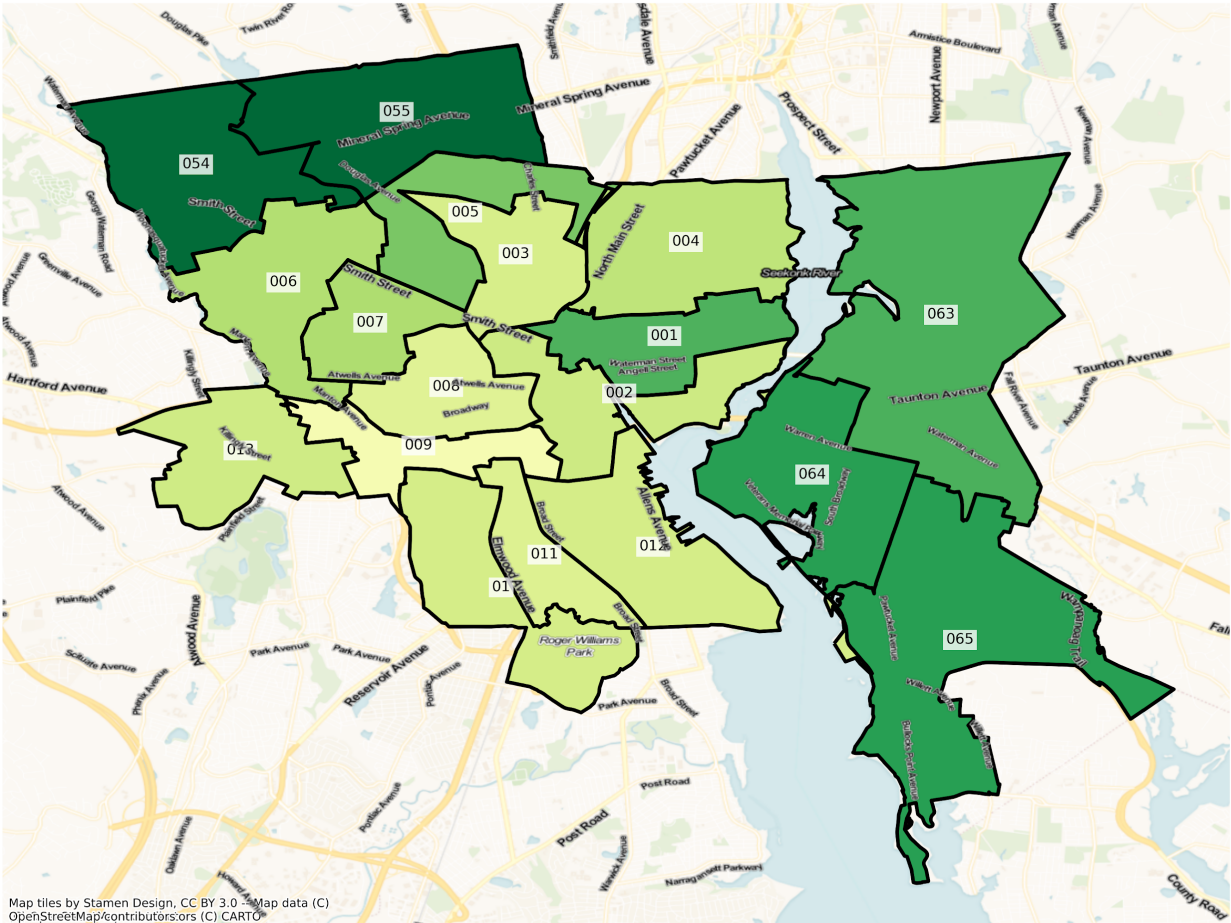


Map tiles by Stamen Design, CC BY 3.0. Map data (C) OpenStreetMap/contributors or (C) CARTO.

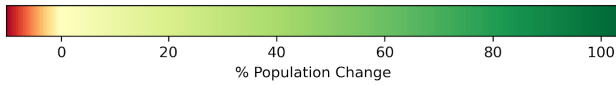




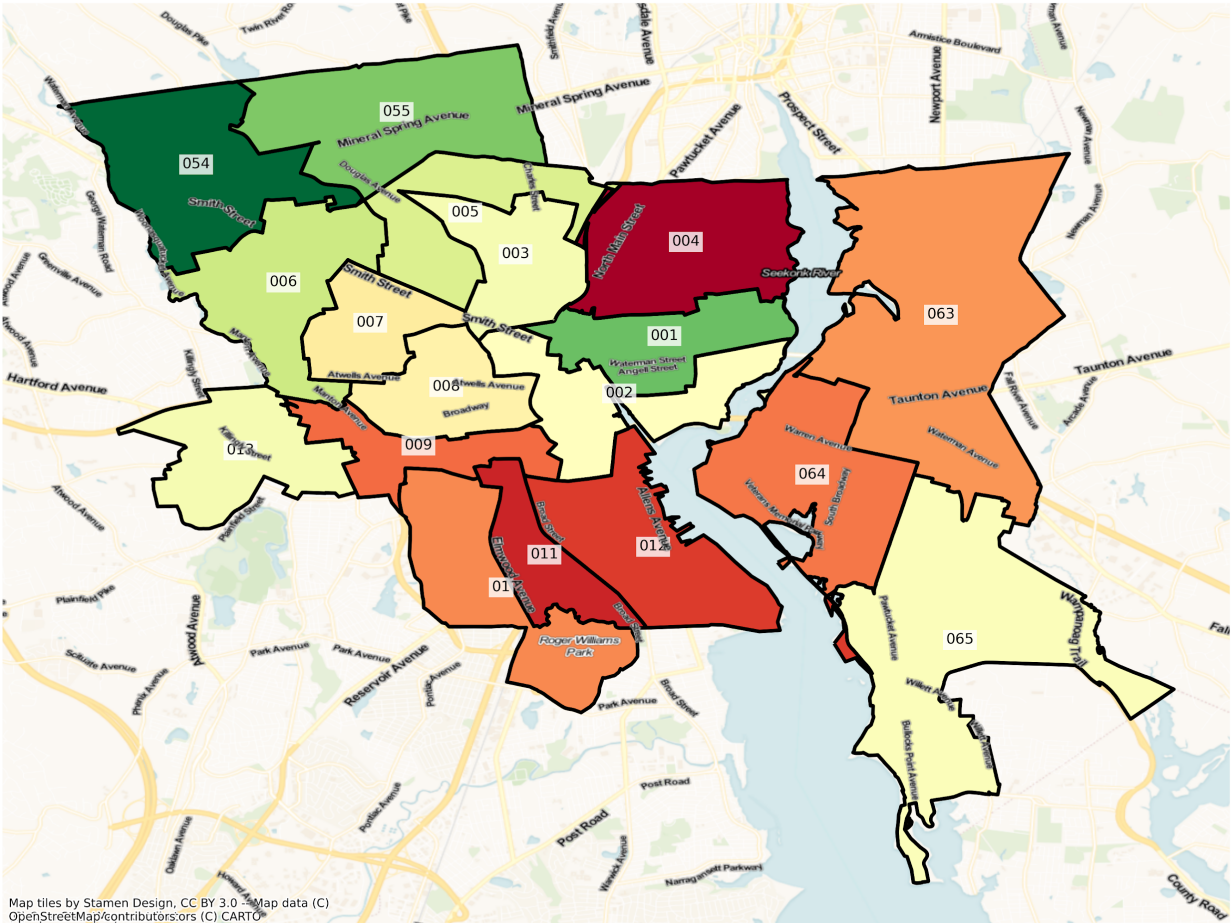
RI Providence State House Districts  
 Population % Change from 2010 to 2020  
 Ethnicity: Hispanic or Latino



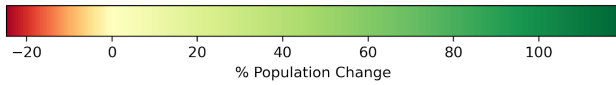
Map tiles by Stamen Design, CC BY 3.0. Map data (C) OpenStreetMap/contributors or (C) CARTO.



RI Providence State House Districts  
 Population % Change from 2010 to 2020  
 Ethnicity: Not Latino African American alone

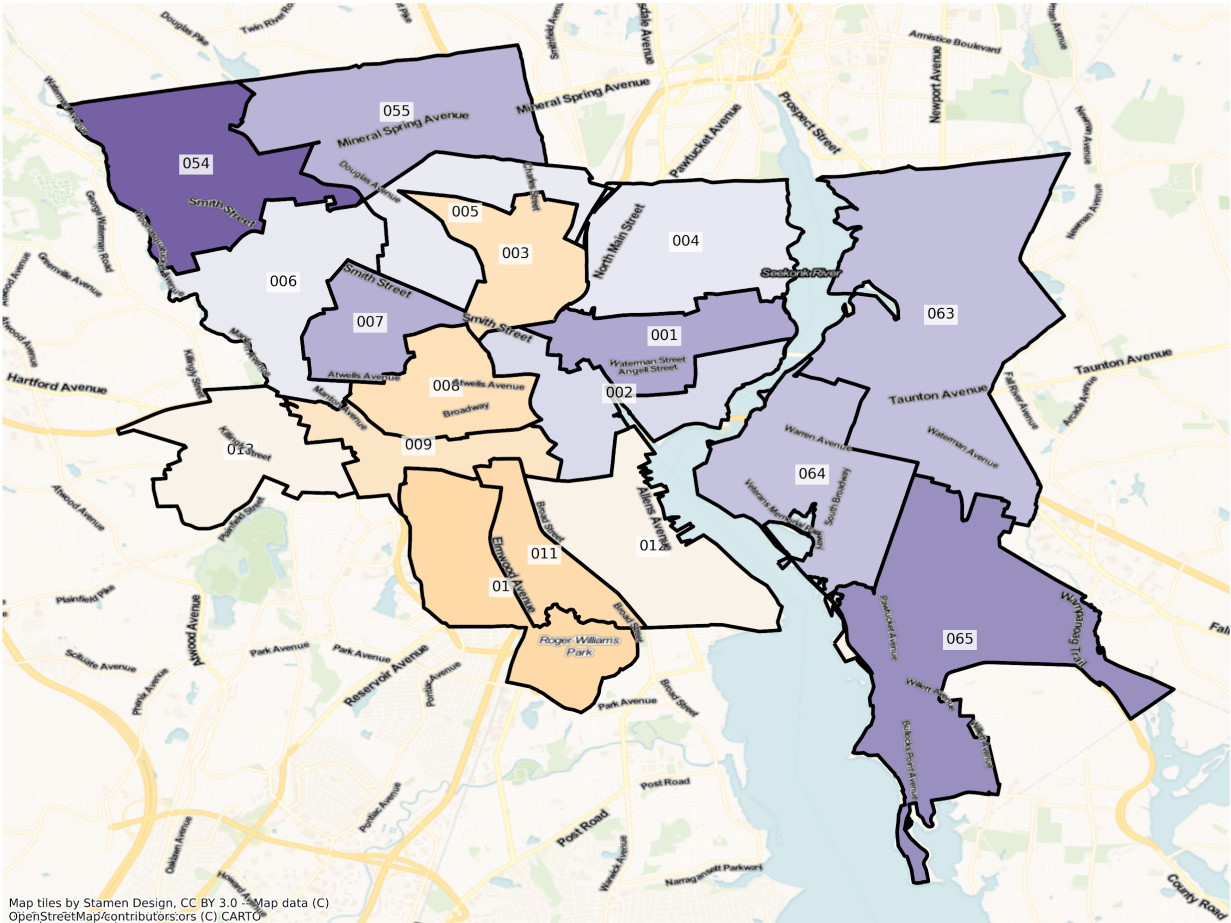


Map tiles by Stamen Design, CC BY 3.0. Map data (C) OpenStreetMap/contributors ors (C) CARTO.

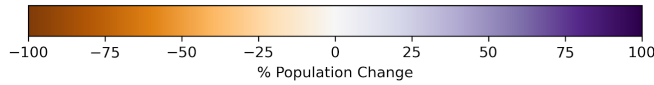




RI Providence State House Districts  
 Population % Change from 2010 to 2020  
 Ethnicity: Not Latino Asian alone

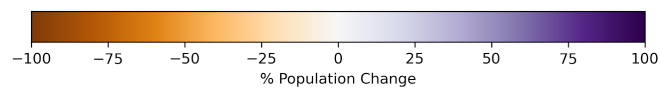
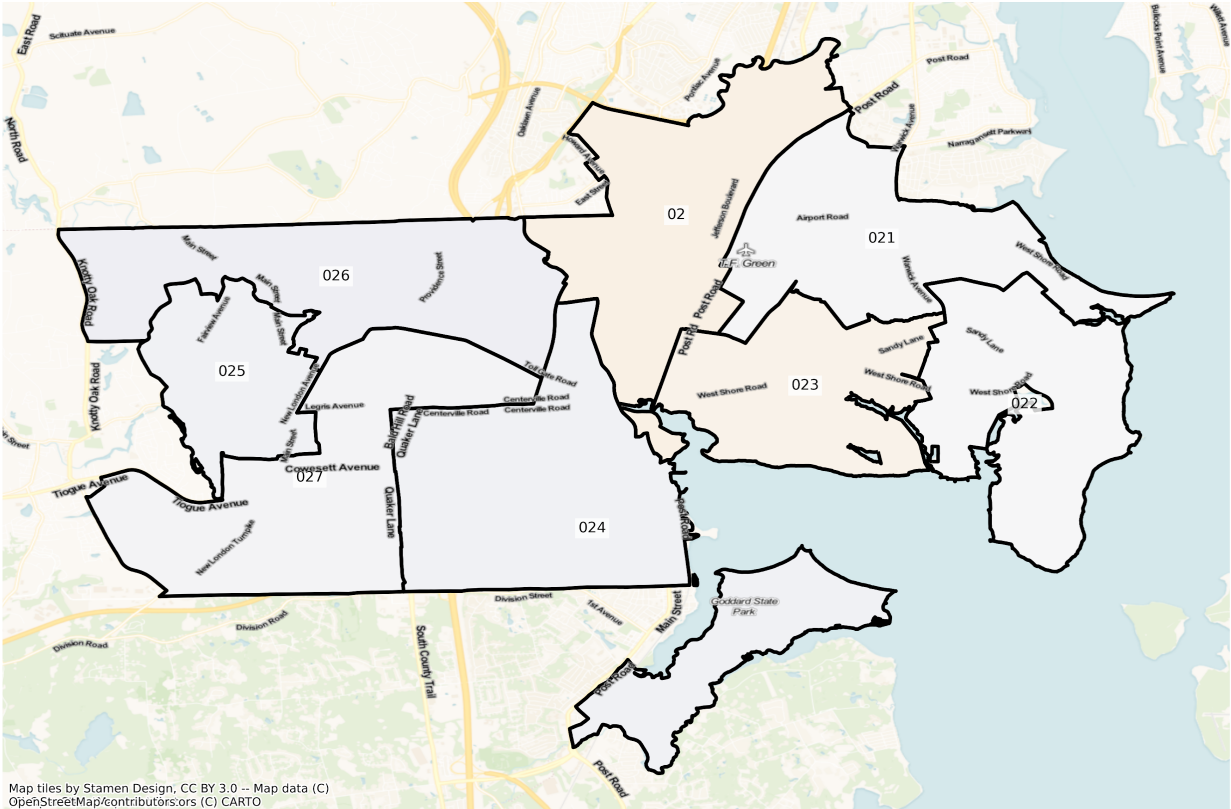


Map tiles by Stamen Design, CC BY 3.0. Map data (C) OpenStreetMap/contributors or (C) CARTO.

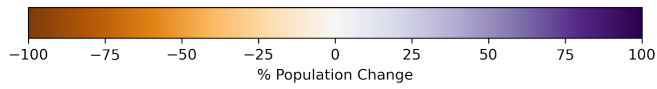
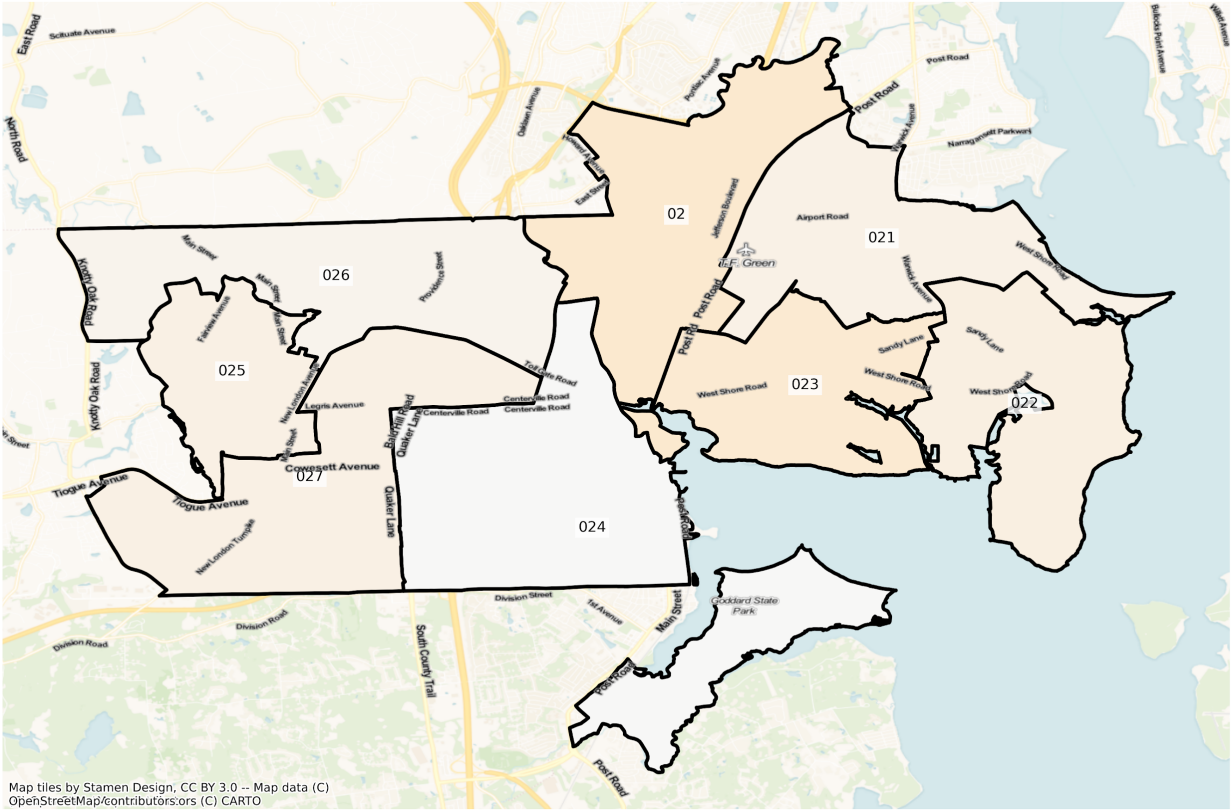


# Warwick

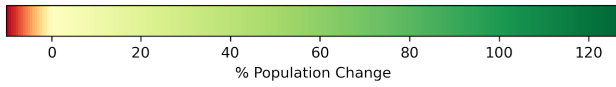
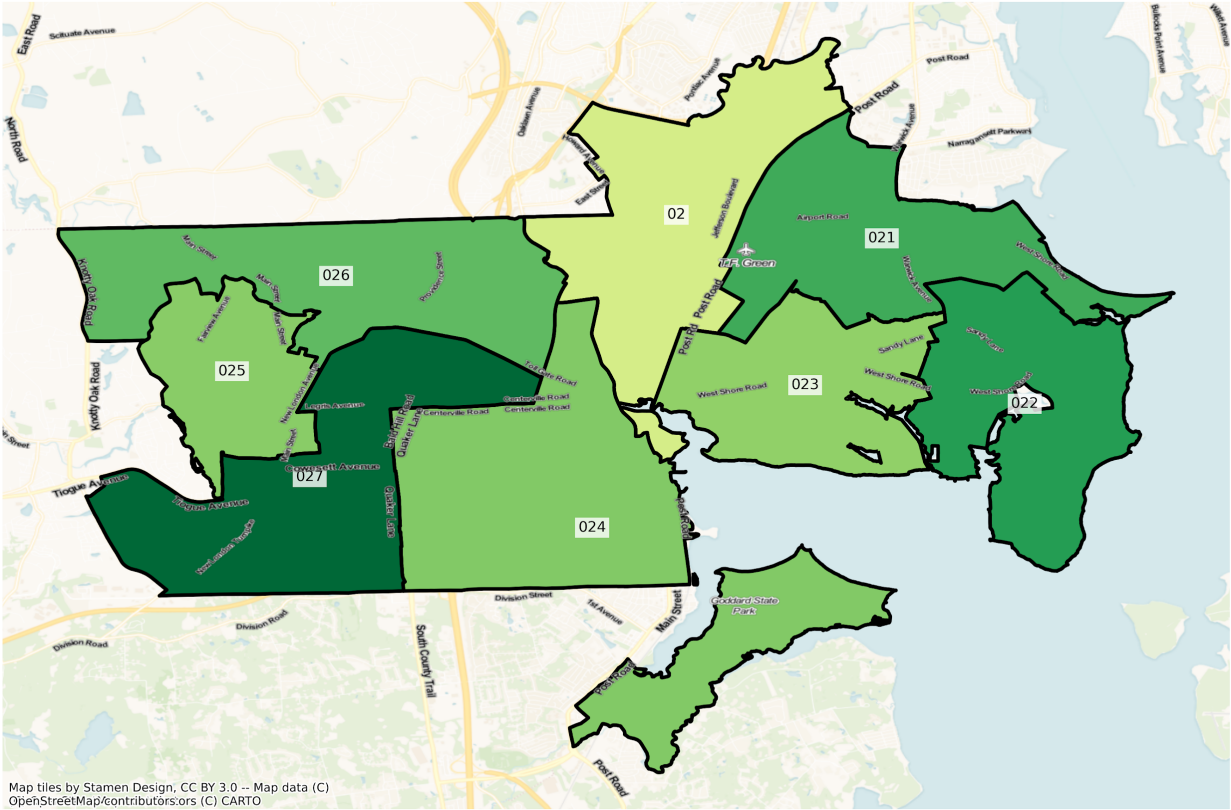
RI Warwick State House Districts  
Population % Change from 2010 to 2020  
Total Population



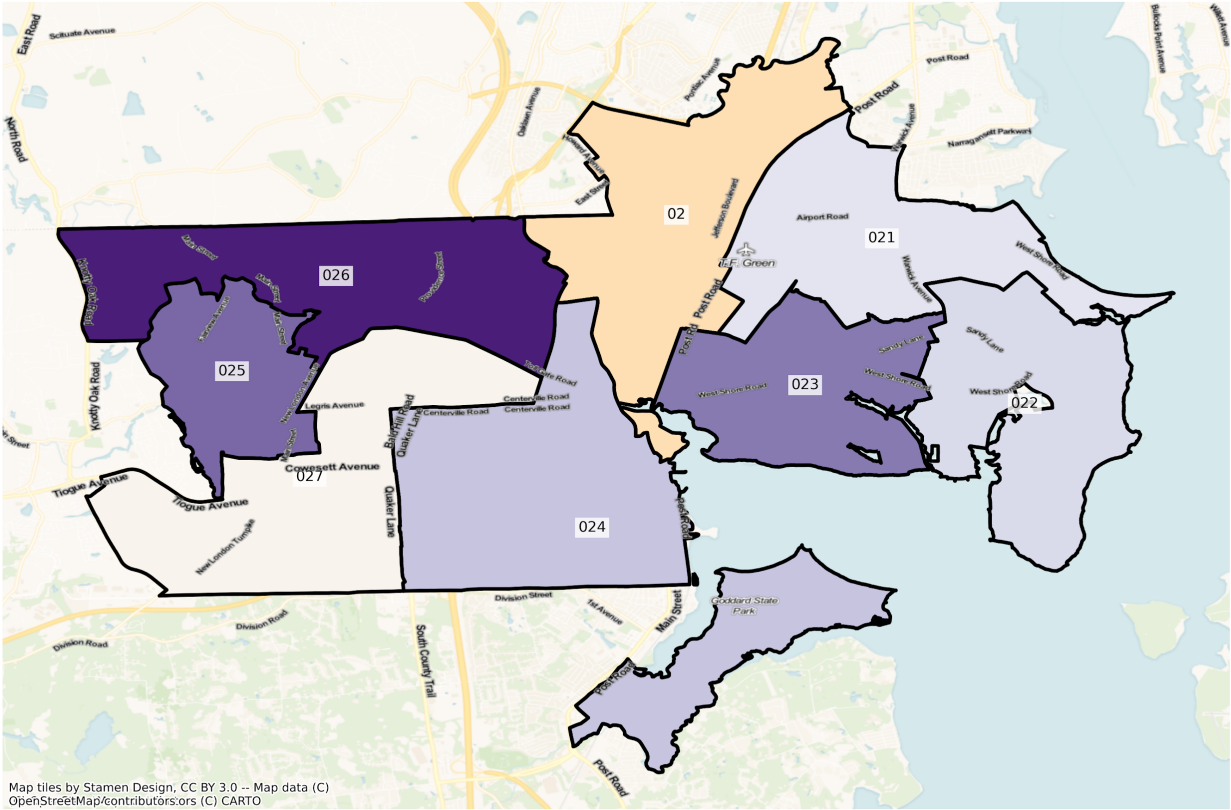
RI Warwick State House Districts  
 Population % Change from 2010 to 2020  
 Ethnicity: Not Latino White alone



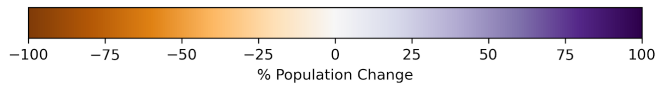
RI Warwick State House Districts  
Population % Change from 2010 to 2020  
Ethnicity: Hispanic or Latino



RI Warwick State House Districts  
Population % Change from 2010 to 2020  
Ethnicity: Not Latino African American alone

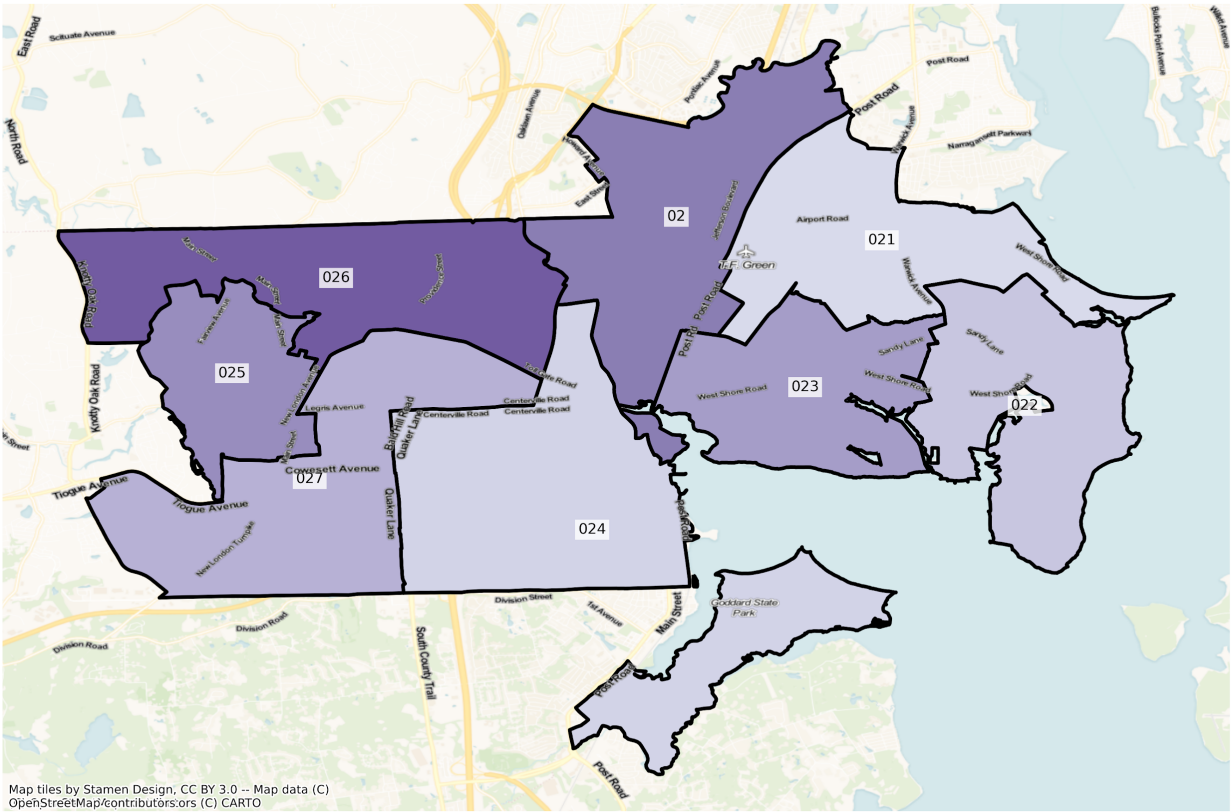


Map tiles by Stamen Design, CC BY 3.0 -- Map data (C) OpenStreetMap/contributors.ors (C) CARTO

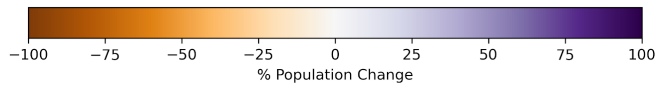




RI Warwick State House Districts  
 Population % Change from 2010 to 2020  
 Ethnicity: Not Latino Asian alone



Map tiles by Stamen Design, CC BY 3.0 -- Map data (C) OpenStreetMap/contributors,ors (C) CARTO



2010 Population by Race and Ethnicity at the State House District Level

DISTRICT	Total Population	Hispanic or Latino Origin	White Alone, not Latino	African American Alone, not Latino	AIAN Alone, not Latino <sup>1</sup>	Asian Alone, not Latino	NHPI Alone, not Latino <sup>2</sup>	Other Alone, not Latino	Two or More, not Latino
1	13881	1002	9922	485	21	1855	7	45	544
2	13821	1768	8714	1063	62	1644	12	127	431
3	13949	5905	3465	2838	146	753	4	233	605
4	13713	1049	9539	1384	75	678	0	368	620
5	14328	2719	8808	1797	93	356	4	154	397
6	14226	3868	7974	1412	84	414	25	117	332
7	14211	5725	5268	2188	87	337	3	125	478
8	13987	5975	4938	1643	148	679	11	106	487

9	13953	8168	2412	2231	107	602	11	75	347
10	14169	7771	1948	1944	103	1927	3	78	395
11	14235	8578	1559	2570	105	910	4	114	395
12	14094	7209	2617	2998	133	491	5	149	492
13	13792	7650	4249	957	53	560	0	67	256
14	14342	4142	7854	824	60	1011	21	54	376
15	14424	596	12695	522	23	446	7	19	116
16	13831	856	11826	317	17	572	0	25	218
17	14039	1158	11213	412	24	967	4	40	221
18	14222	1968	10111	831	55	805	0	88	364
19	13384	596	12036	218	22	247	3	21	241
20	13931	983	11545	890	37	253	1	29	193
21	13767	504	12386	275	37	280	2	31	252
22	13678	415	12451	188	36	285	7	37	259
23	14006	459	12935	154	52	216	3	13	174
24	13658	365	12349	186	31	505	0	35	187
25	13714	786	12183	227	44	166	4	16	288
26	13705	652	12253	208	31	280	3	34	244
27	14098	401	12805	260	18	367	4	18	225
28	13886	267	13214	85	21	108	1	18	172
29	14314	281	13607	93	22	143	1	8	159
30	14324	237	13220	108	16	548	1	22	172
31	14331	378	13268	150	74	207	2	20	232
32	14007	299	13154	88	75	155	6	24	206
33	14337	250	13350	115	115	275	2	29	201
34	14014	274	12909	176	227	123	2	30	273
35	14186	574	12281	414	103	525	3	38	248
36	13719	241	12922	78	167	105	3	9	194
37	14241	377	13045	85	63	457	0	14	200
38	13785	357	12771	134	129	125	3	12	254
39	13692	271	12972	107	54	82	2	13	191
40	14383	191	13861	65	25	91	2	18	130
41	14344	175	13750	66	20	198	0	20	115
42	14350	893	12546	260	27	423	3	30	168
43	13811	770	12301	274	10	272	0	30	154



44	14342	294	13479	132	11	269	0	19	138
45	14077	463	12603	192	11	590	0	37	181
46	14333	810	12359	354	20	356	0	144	290
47	14378	247	13827	59	16	57	1	17	154
48	14367	304	13716	65	15	129	0	11	127
49	14059	2962	8560	982	55	877	3	69	551
50	13769	1062	10817	695	33	724	5	17	416
51	14043	1829	10652	520	23	616	5	34	364
52	14232	267	13430	103	12	225	1	35	159
53	14320	328	13425	194	15	196	1	27	134
54	14272	1032	12067	479	34	301	5	89	265
55	13920	1059	11390	749	31	338	0	159	194
56	14324	9010	3311	1097	42	80	6	376	402
57	14128	3654	9202	544	32	84	12	245	355
58	14352	3223	5690	2686	82	197	8	1502	964
59	13750	3014	6299	2347	53	346	1	943	747
60	14228	3434	7563	1830	72	176	13	470	670
61	13752	1495	11048	569	15	128	1	177	319
62	14034	2630	9301	1074	43	180	9	389	408
63	14322	578	11600	860	59	152	4	515	554
64	13808	700	10653	1013	71	232	2	493	644
65	14017	542	11831	619	85	296	1	196	447
66	13858	273	12931	108	11	276	0	49	210
67	13711	250	12878	111	34	234	2	10	192
68	13670	263	13054	87	15	82	0	11	158
69	13793	300	13028	123	16	140	1	12	173
70	13372	208	12674	125	17	124	2	18	204
71	13736	223	13061	133	13	132	5	15	154
72	13627	285	12708	186	26	217	9	27	169
73	13715	1556	9740	1195	101	250	12	77	784
74	13490	612	11481	488	37	378	16	57	421
75	13635	595	11934	508	63	152	1	79	303

<sup>1</sup>American Indian and Alaska Native Alone, not Latino

<sup>2</sup>Native Hawaiian and Pacific Islander Alone, not Latino

2020 Population by Race and Ethnicity at the State House District Level

DISTRICT	Total Population	Hispanic or Latino Origin	White Alone, not Latino	African American Alone, not Latino	AIAN Alone, not Latino <sup>1</sup>	Asian Alone, not Latino	NHPI Alone, not Latino <sup>2</sup>	Other Alone, not Latino	Two or More, not Latino
1	16539	1685	10298	822	46	2623	13	185	867
2	14182	2225	8011	1061	53	1960	6	116	750
3	15042	7185	3094	3013	99	612	4	252	783
4	13879	1377	9439	1042	38	748	7	265	963
5	15413	4221	7469	2192	73	388	6	265	799
6	15303	5258	6900	1820	41	455	1	133	695
7	15373	7887	4040	2123	74	465	0	163	621
8	15534	6974	5472	1609	69	549	8	124	729
9	14396	8611	2760	1897	69	508	2	94	455
10	14913	9516	1593	1700	82	1478	2	145	397
11	15319	10126	1778	2032	76	706	2	146	453
12	14560	8808	1927	2432	117	469	13	199	595
13	14942	9529	3317	1016	65	538	2	110	365
14	15298	6765	5697	1034	40	1116	3	118	525
15	14111	1022	11546	458	28	621	3	68	365
16	14588	1716	10836	397	40	929	4	68	598
17	14781	2235	9921	644	38	1286	5	100	552
18	15146	3504	8678	974	34	1173	5	131	647
19	13603	1017	11366	280	21	309	3	37	570
20	13164	1254	10160	708	49	395	2	74	522
21	13969	949	11735	311	30	335	0	53	556
22	13769	819	11641	224	30	367	3	52	633
23	13454	728	11503	242	34	313	4	63	567
24	14263	602	12321	240	9	620	2	73	396
25	14325	1274	11447	369	83	249	3	89	811
26	14555	1157	11806	384	47	465	4	75	617
27	14459	910	12063	250	26	502	4	80	624
28	14042	468	12710	106	17	150	1	55	535
29	15244	438	13672	123	26	337	4	57	587
30	15674	628	13339	159	12	835	3	68	630

31	15135	636	13222	225	77	289	9	42	635
32	14562	415	13152	114	70	263	6	55	487
33	13973	299	12691	94	94	332	2	47	414
34	13280	403	11678	148	216	225	5	78	527
35	15299	917	12638	501	69	625	4	54	491
36	14487	338	13235	90	120	105	2	54	543
37	14645	625	12840	113	83	463	11	37	473
38	14014	578	12410	113	123	179	5	48	558
39	13944	354	12758	68	64	122	4	74	500
40	14272	320	13236	67	12	97	1	54	485
41	14661	499	13203	112	14	335	0	60	438
42	14795	1787	11329	444	17	698	1	52	467
43	14224	1979	10865	477	13	373	7	73	437
44	14840	650	13062	160	19	371	1	77	500
45	14929	770	12272	317	8	893	4	68	597
46	15268	1339	11907	463	27	591	1	188	752
47	14665	508	13427	83	21	68	7	47	504
48	14924	610	13489	144	5	177	1	68	430
49	14442	3887	7687	1197	37	670	5	147	812
50	14769	2369	9672	1089	48	639	9	114	829
51	15063	2872	9286	734	53	1257	4	99	758
52	15276	605	13420	132	10	447	2	100	560
53	14796	517	11993	197	10	1532	3	112	432
54	15203	2082	10741	1049	37	495	4	140	655
55	14573	2155	9829	1210	33	459	4	211	672
56	16753	11132	2924	997	35	97	7	474	1087
57	16049	5288	8659	703	27	178	2	344	848
58	15339	4291	4695	2251	41	179	5	1117	2760
59	14840	3706	5803	2187	62	369	4	697	2012
60	15455	4385	6255	2312	38	173	8	550	1734
61	14173	2529	9280	840	23	159	9	313	1020
62	14691	3488	8025	1361	41	197	9	406	1164
63	14378	976	10829	759	67	199	0	376	1172
64	14059	1251	9821	872	35	301	4	486	1289
65	14089	968	10920	636	44	443	1	241	836

66	14320	492	12407	178	6	495	0	99	643
67	14372	477	12524	174	16	546	0	41	594
68	13669	482	12409	124	16	151	0	57	430
69	13637	630	11971	349	52	137	1	35	462
70	13848	435	12508	176	22	159	6	38	504
71	14321	392	12972	142	8	146	6	80	575
72	13467	473	11978	170	19	256	4	59	508
73	13989	2129	9173	1018	136	330	20	153	1030
74	14921	1130	11687	664	37	455	12	153	783
75	13988	1008	11580	462	39	186	1	113	599

<sup>1</sup>American Indian and Alaska Native Alone, not Latino

<sup>2</sup>Native Hawaiian and Pacific Islander Alone, not Latino

#### Percent Change of Population from 2010 to 2020 by Race and Ethnicity at State House District Level

DISTRICT	Total Population	Hispanic or Latino Origin	White Alone, not Latino	African American Alone, not Latino	AIAN Alone, not Latino <sup>1</sup>	Asian Alone, not Latino	NHPI Alone, not Latino <sup>2</sup>	Other Alone, not Latino	Two or More, not Latino
1	19.15%	68.16%	3.79%	69.48%	119.05%	41.40%	85.71%	311.11%	59.38%
2	2.61%	25.85%	-8.07%	-0.19%	-14.52%	19.22%	-50.00%	-8.66%	74.01%
3	7.84%	21.68%	-10.71%	6.17%	-32.19%	-18.73%	0.00%	8.15%	29.42%
4	1.21%	31.27%	-1.05%	-24.71%	-49.33%	10.32%	inf	-27.99%	55.32%
5	7.57%	55.24%	-15.20%	21.98%	-21.51%	8.99%	50.00%	72.08%	101.26%
6	7.57%	35.94%	-13.47%	28.90%	-51.19%	9.90%	-96.00%	13.68%	109.34%
7	8.18%	37.76%	-23.31%	-2.97%	-14.94%	37.98%	-100.00%	30.40%	29.92%
8	11.06%	16.72%	10.81%	-2.07%	-53.38%	-19.15%	-27.27%	16.98%	49.69%
9	3.17%	5.42%	14.43%	-14.97%	-35.51%	-15.61%	-81.82%	25.33%	31.12%
10	5.25%	22.46%	-18.22%	-12.55%	-20.39%	-23.30%	-33.33%	85.90%	0.51%
11	7.62%	18.05%	14.05%	-20.93%	-27.62%	-22.42%	-50.00%	28.07%	14.68%
12	3.31%	22.18%	-26.37%	-18.88%	-12.03%	-4.48%	160.00%	33.56%	20.93%
13	8.34%	24.56%	-21.93%	6.17%	22.64%	-3.93%	inf	64.18%	42.58%
14	6.67%	63.33%	-27.46%	25.49%	-33.33%	10.39%	-85.71%	118.52%	39.63%
15	-2.17%	71.48%	-9.05%	-12.26%	21.74%	39.24%	-57.14%	257.89%	214.66%
16	5.47%	100.47%	-8.37%	25.24%	135.29%	62.41%	inf	172.00%	174.31%
17	5.29%	93.01%	-11.52%	56.31%	58.33%	32.99%	25.00%	150.00%	149.77%

18	6.50%	78.05%	-14.17%	17.21%	-38.18%	45.71%	inf	48.86%	77.75%
19	1.64%	70.64%	-5.57%	28.44%	-4.55%	25.10%	0.00%	76.19%	136.51%
20	-5.51%	27.57%	-12.00%	-20.45%	32.43%	56.13%	100.00%	155.17%	170.47%
21	1.47%	88.29%	-5.26%	13.09%	-18.92%	19.64%	-100.00%	70.97%	120.63%
22	0.67%	97.35%	-6.51%	19.15%	-16.67%	28.77%	-57.14%	40.54%	144.40%
23	-3.94%	58.61%	-11.07%	57.14%	-34.62%	44.91%	33.33%	384.62%	225.86%
24	4.43%	64.93%	-0.23%	29.03%	-70.97%	22.77%	inf	108.57%	111.76%
25	4.46%	62.09%	-6.04%	62.56%	88.64%	50.00%	-25.00%	456.25%	181.60%
26	6.20%	77.45%	-3.65%	84.62%	51.61%	66.07%	33.33%	120.59%	152.87%
27	2.56%	126.93%	-5.79%	-3.85%	44.44%	36.78%	0.00%	344.44%	177.33%
28	1.12%	75.28%	-3.81%	24.71%	-19.05%	38.89%	0.00%	205.56%	211.05%
29	6.50%	55.87%	0.48%	32.26%	18.18%	135.66%	300.00%	612.50%	269.18%
30	9.42%	164.98%	0.90%	47.22%	-25.00%	52.37%	200.00%	209.09%	266.28%
31	5.61%	68.25%	-0.35%	50.00%	4.05%	39.61%	350.00%	110.00%	173.71%
32	3.96%	38.80%	-0.02%	29.55%	-6.67%	69.68%	0.00%	129.17%	136.41%
33	-2.54%	19.60%	-4.94%	-18.26%	-18.26%	20.73%	0.00%	62.07%	105.97%
34	-5.24%	47.08%	-9.54%	-15.91%	-4.85%	82.93%	150.00%	160.00%	93.04%
35	7.85%	59.76%	2.91%	21.01%	-33.01%	19.05%	33.33%	42.11%	97.98%
36	5.60%	40.25%	2.42%	15.38%	-28.14%	0.00%	-33.33%	500.00%	179.90%
37	2.84%	65.78%	-1.57%	32.94%	31.75%	1.31%	inf	164.29%	136.50%
38	1.66%	61.90%	-2.83%	-15.67%	-4.65%	43.20%	66.67%	300.00%	119.69%
39	1.84%	30.63%	-1.65%	-36.45%	18.52%	48.78%	100.00%	469.23%	161.78%
40	-0.77%	67.54%	-4.51%	3.08%	-52.00%	6.59%	-50.00%	200.00%	273.08%
41	2.21%	185.14%	-3.98%	69.70%	-30.00%	69.19%		200.00%	280.87%
42	3.10%	100.11%	-9.70%	70.77%	-37.04%	65.01%	-66.67%	73.33%	177.98%
43	2.99%	157.01%	-11.67%	74.09%	30.00%	37.13%	inf	143.33%	183.77%
44	3.47%	121.09%	-3.09%	21.21%	72.73%	37.92%	inf	305.26%	262.32%
45	6.05%	66.31%	-2.63%	65.10%	-27.27%	51.36%	inf	83.78%	229.83%
46	6.52%	65.31%	-3.66%	30.79%	35.00%	66.01%	inf	30.56%	159.31%
47	2.00%	105.67%	-2.89%	40.68%	31.25%	19.30%	600.00%	176.47%	227.27%
48	3.88%	100.66%	-1.66%	121.54%	-66.67%	37.21%	inf	518.18%	238.58%
49	2.72%	31.23%	-10.20%	21.89%	-32.73%	-23.60%	66.67%	113.04%	47.37%
50	7.26%	123.07%	-10.59%	56.69%	45.45%	-11.74%	80.00%	570.59%	99.28%
51	7.26%	57.03%	-12.82%	41.15%	130.43%	104.06%	-20.00%	191.18%	108.24%
52	7.34%	126.59%	-0.07%	28.16%	-16.67%	98.67%	100.00%	185.71%	252.20%

53	3.32%	57.62%	-10.67%	1.55%	-33.33%	681.63%	200.00%	314.81%	222.39%
54	6.52%	101.74%	-10.99%	119.00%	8.82%	64.45%	-20.00%	57.30%	147.17%
55	4.69%	103.49%	-13.71%	61.55%	6.45%	35.80%	inf	32.70%	246.39%
56	16.96%	23.55%	-11.69%	-9.12%	-16.67%	21.25%	16.67%	26.06%	170.40%
57	13.60%	44.72%	-5.90%	29.23%	-15.63%	111.90%	-83.33%	40.41%	138.87%
58	6.88%	33.14%	-17.49%	-16.20%	-50.00%	-9.14%	-37.50%	-25.63%	186.31%
59	7.93%	22.96%	-7.87%	-6.82%	16.98%	6.65%	300.00%	-26.09%	169.34%
60	8.62%	27.69%	-17.29%	26.34%	-47.22%	-1.70%	-38.46%	17.02%	158.81%
61	3.06%	69.16%	-16.00%	47.63%	53.33%	24.22%	800.00%	76.84%	219.75%
62	4.68%	32.62%	-13.72%	26.72%	-4.65%	9.44%	0.00%	4.37%	185.29%
63	0.39%	68.86%	-6.65%	-11.74%	13.56%	30.92%	-100.00%	-26.99%	111.55%
64	1.82%	78.71%	-7.81%	-13.92%	-50.70%	29.74%	100.00%	-1.42%	100.16%
65	0.51%	78.60%	-7.70%	2.75%	-48.24%	49.66%	0.00%	22.96%	87.02%
66	3.33%	80.22%	-4.05%	64.81%	-45.45%	79.35%		102.04%	206.19%
67	4.82%	90.80%	-2.75%	56.76%	-52.94%	133.33%	-100.00%	310.00%	209.38%
68	-0.01%	83.27%	-4.94%	42.53%	6.67%	84.15%		418.18%	172.15%
69	-1.13%	110.00%	-8.11%	183.74%	225.00%	-2.14%	0.00%	191.67%	167.05%
70	3.56%	109.13%	-1.31%	40.80%	29.41%	28.23%	200.00%	111.11%	147.06%
71	4.26%	75.78%	-0.68%	6.77%	-38.46%	10.61%	20.00%	433.33%	273.38%
72	-1.17%	65.96%	-5.74%	-8.60%	-26.92%	17.97%	-55.56%	118.52%	200.59%
73	2.00%	36.83%	-5.82%	-14.81%	34.65%	32.00%	66.67%	98.70%	31.38%
74	10.61%	84.64%	1.79%	36.07%	0.00%	20.37%	-25.00%	168.42%	85.99%
75	2.59%	69.41%	-2.97%	-9.06%	-38.10%	22.37%	0.00%	43.04%	97.69%

<sup>1</sup>American Indian and Alaska Native Alone, not Latino

<sup>2</sup>Native Hawaiian and Pacific Islander Alone, not Latino

# Variable Definitions

District shapefiles were retrieved from the Redistricting Data Hub, All About Redistricting, and the U.S. Census. The list of variables below can be found in the P1 and P2 table of the PL 94-171. Data was retrieved from the Redistricting Data Hub processed legacy file of the PL 94-171.

Variable Name in Report	Census Variable Reference
Total Population	P0010001
Hispanic or Latino Origin	P0020002
White Alone, not Latino	P0020005
African American Alone, not Latino	P0020006
American Indian and Alaska Native Alone, not Latino	P0020007
Asian Alone, not Latino	P0020008
Native Hawaiian and Pacific Islander Alone, not Latino	P0020009
Other Alone, not Latino	P0020010
Two or More, not Latino	P0020011