

HAYSTAQ DNA

Oklahoma

Overview	2
Congressional	2
Total Population	3
Population by Race and Ethnicity	4
State Senate	10
Total Population	10
Population by Race and Ethnicity	13
Oklahoma City	18
Tulsa	24
State House	36
Total Population	36
Population by Race and Ethnicity	40
Enid	45
Lawton	51
Oklahoma City	57
Stillwater	63
Tulsa	69
Variable Definitions	85

Overview

Oklahoma added 207,992 people to their population over the last decade, increasing by 5.54%. With declines in population in the rural eastern regions (District 2) and increases centered around cities such as Oklahoma City and Tulsa, Oklahoma aligns with the national trend of movement from rural to urban/suburban areas.

The White population declined by 6.53% over the decade in accordance with its national patterns of decline. The White population declined in most districts, and did *not* grow at a similar rate to other communities in urban areas in the center of the state. The *overall share* of the population is now 60.8% compared to 68.65% in the 2010 Census.

The Latino population grew by 42.15% over the decade across all areas of the state, though increases were more concentrated in urban areas such as Oklahoma City. The *overall share* of the population is now 11.92% compared to 8.85% in the 2010 Census.

Over the decade, the American Indian population remained stagnant. Increases were seen around cities such as Oklahoma City and Tulsa, while decreases were scattered along the outer edges of the state. The *overall share* of the population decreased to 7.88% from 8.23% in the 2010 Census.

The African American population remained stagnant, as increases in cities were offset by significant decreases in primarily non-urban areas across the state, particularly in the east. The *overall share* of the population decreased to 7.15% from 7.25% in the 2010 Census.

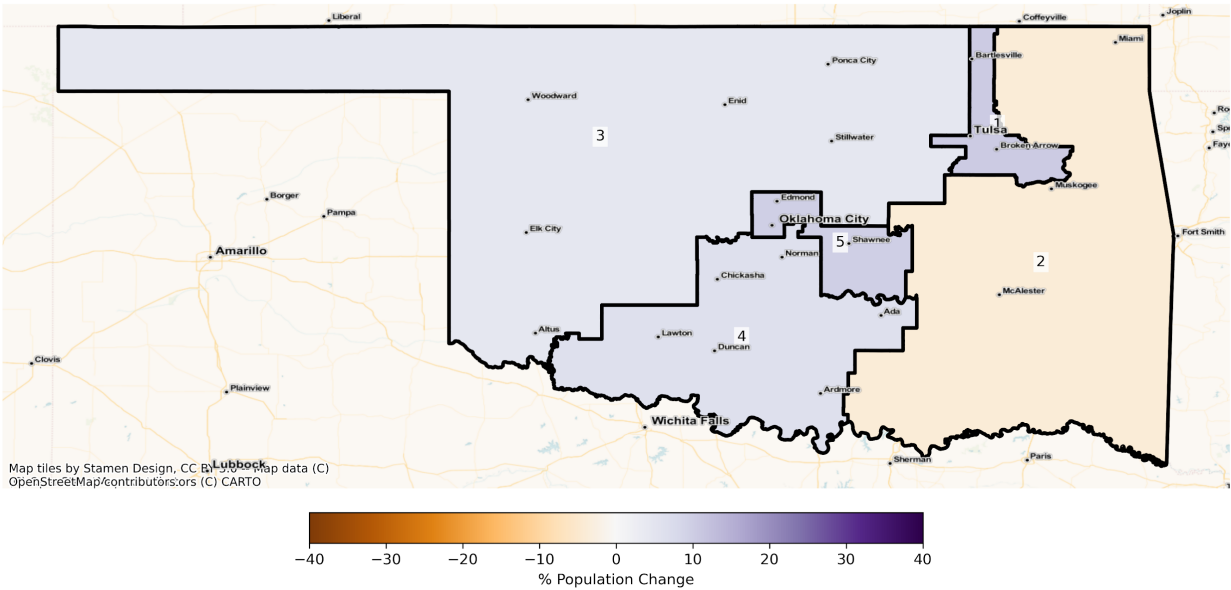
The Asian population increased by 39.74% over the decade across the state, though most significantly around Tulsa (District 1) in the northeast. The *overall share* of the population is now 2.26% compared to 1.71% in the 2010 Census.

Congressional

The charts below display the percent change in population from 2010 to 2020 for the listed group. Please note that the color bars are fixed to be from -40% to 40% and these maps are displayed in brown to purple. If the percent change in population was outside of this range, the color scheme changes to red to green to indicate a change.

Total Population

OK Congressional Districts
Population % Change from 2010 to 2020
Total Population

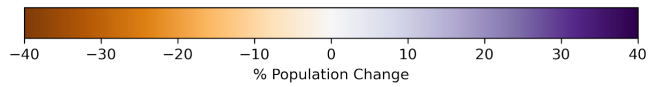
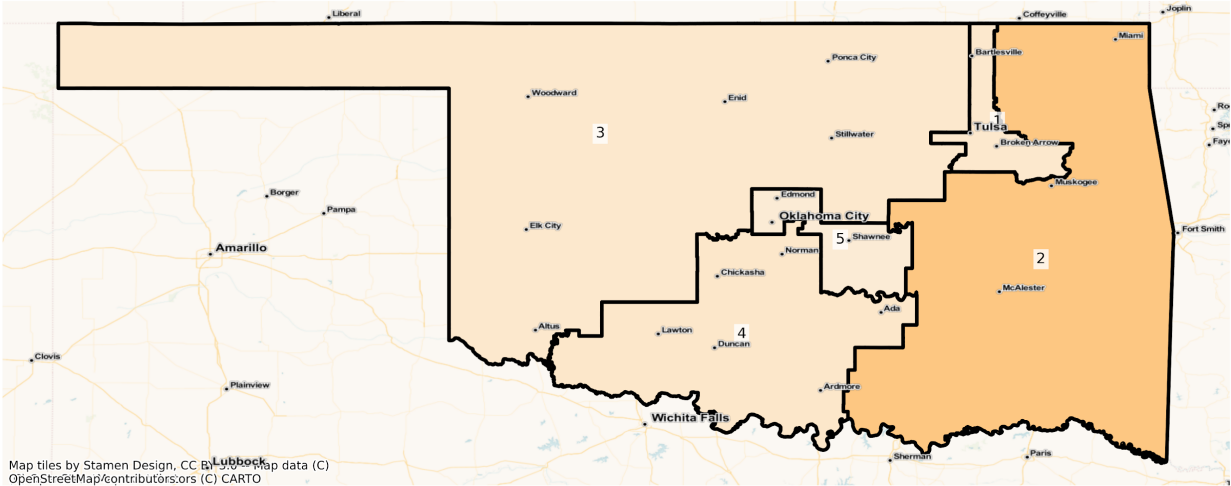


Total Population from 2010 to 2020 at Congressional District Level

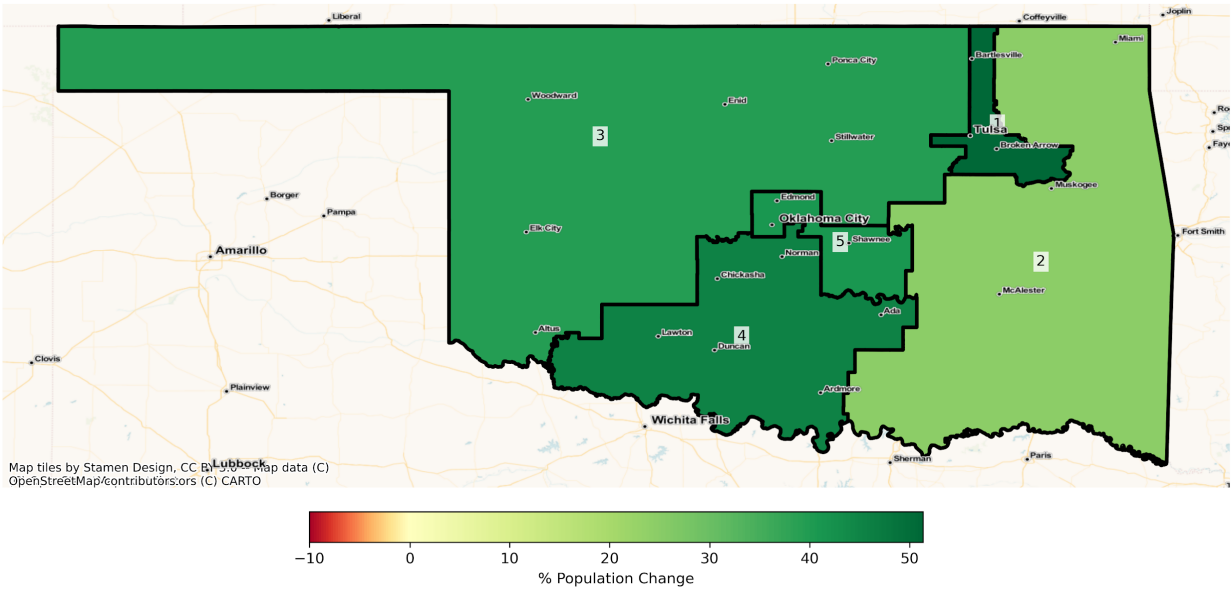
DISTRICT	Total Population 2010	Total Population 2020	Total Population % Change
1	750270	828652	10.45%
2	750248	722070	-3.76%
3	750270	785194	4.65%
4	750266	798546	6.44%
5	750271	824855	9.94%

Population by Race and Ethnicity

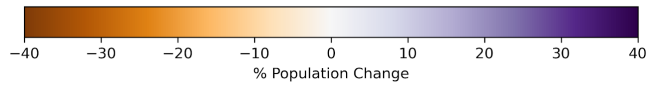
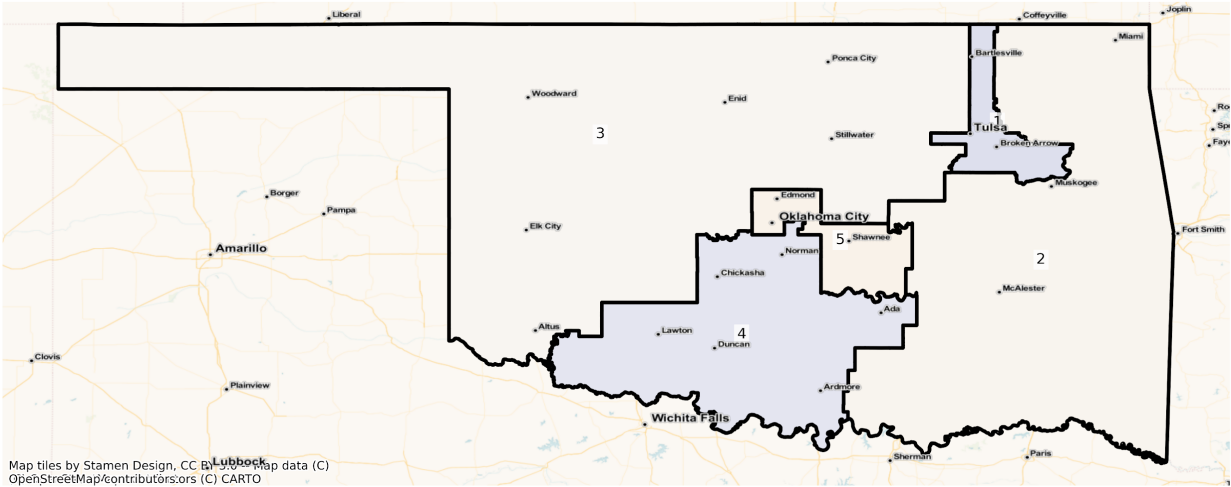
OK Congressional Districts
Population % Change from 2010 to 2020
Ethnicity: Not Latino White alone



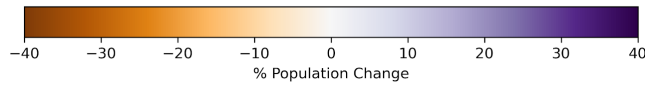
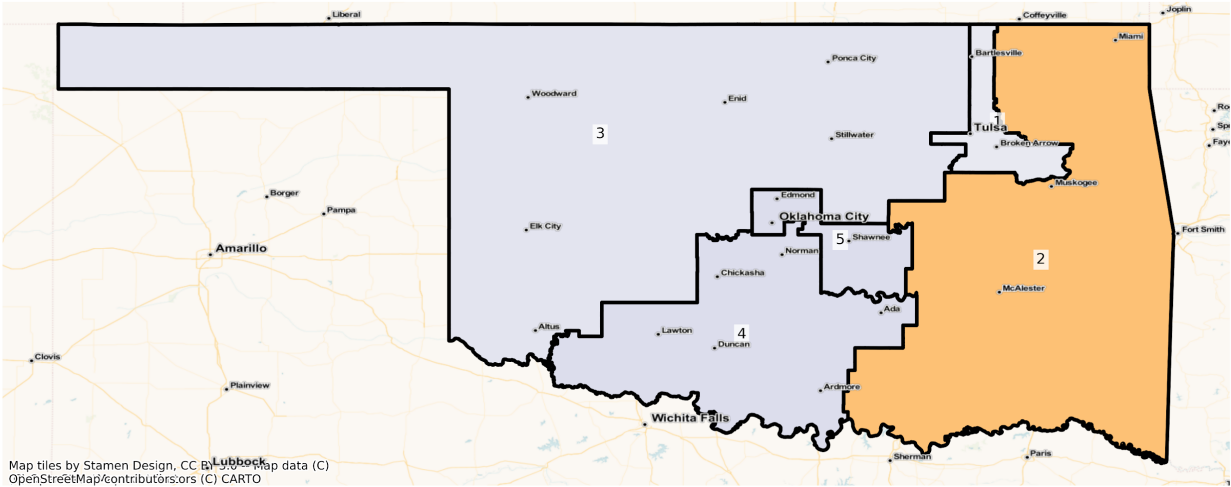
OK Congressional Districts
Population % Change from 2010 to 2020
Ethnicity: Hispanic or Latino



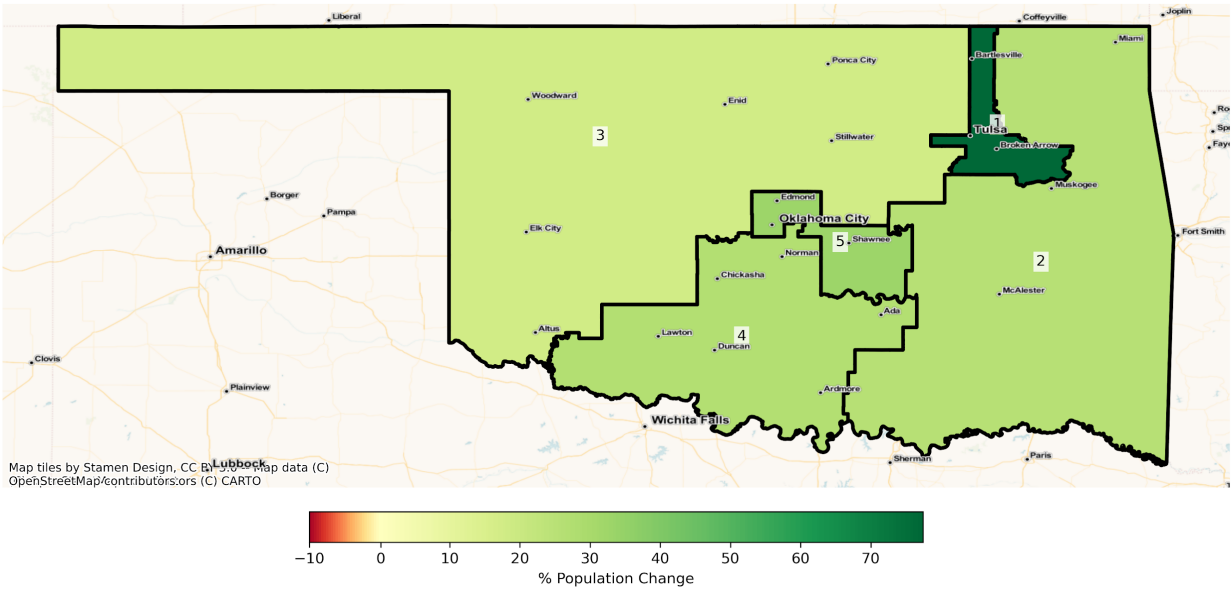
OK Congressional Districts
Population % Change from 2010 to 2020
Ethnicity: Not Latino American Indian and Alaska Native alone



OK Congressional Districts
Population % Change from 2010 to 2020
Ethnicity: Not Latino African American alone



OK Congressional Districts
 Population % Change from 2010 to 2020
 Ethnicity: Not Latino Asian alone



2010 Population by Race and Ethnicity at the Congressional District Level

DISTRICT	Total Population	Hispanic or Latino Origin	White Alone, not Latino	African American Alone, not Latino	AIAN Alone, not Latino ¹	Asian Alone, not Latino	NHPI Alone, not Latino ²	Other Alone, not Latino	Two or More, not Latino
1	750270	73750	503112	67879	49125	15722	433	723	39526
2	750248	32188	496264	25739	136384	3825	548	281	55019
3	750270	63029	574642	26765	46255	9049	1394	500	28636
4	750266	54400	549860	48914	43753	15264	998	586	36491
5	750271	108633	451486	102774	33216	20294	604	864	32400

¹American Indian and Alaska Native Alone, not Latino

²Native Hawaiian and Pacific Islander Alone, not Latino

2020 Population by Race and Ethnicity at the Congressional District Level

DISTRICT	Total Population	Hispanic or Latino Origin	White Alone, not Latino	African American Alone, not Latino	AIAN Alone, not Latino ¹	Asian Alone, not Latino	NHPI Alone, not Latino ²	Other Alone, not Latino	Two or More, not Latino
1	828652	111591	477073	70556	52483	27895	1084	2767	85203
2	722070	40178	432529	22068	134865	4805	1027	1696	84902
3	785194	87842	545260	28151	45938	10670	3597	1984	61752
4	798546	79146	520331	52389	45926	19354	1365	4030	76005
5	824855	153173	431978	110071	32669	26927	1095	3125	65817

¹American Indian and Alaska Native Alone, not Latino

²Native Hawaiian and Pacific Islander Alone, not Latino

Percent Change of Population from 2010 to 2020 by Race and Ethnicity at Congressional District Level

DISTRICT	Total Population	Hispanic or Latino Origin	White Alone, not Latino	African American Alone, not Latino	AIAN Alone, not Latino ¹	Asian Alone, not Latino	NHPI Alone, not Latino ²	Other Alone, not Latino	Two or More, not Latino
1	10.45%	51.31%	-5.18%	3.94%	6.84%	77.43%	150.35%	282.71%	115.56%
2	-3.76%	24.82%	-12.84%	-14.26%	-1.11%	25.62%	87.41%	503.56%	54.31%
3	4.65%	39.37%	-5.11%	5.18%	-0.69%	17.91%	158.03%	296.80%	115.64%
4	6.44%	45.49%	-5.37%	7.10%	4.97%	26.80%	36.77%	587.71%	108.28%
5	9.94%	41.00%	-4.32%	7.10%	-1.65%	32.68%	81.29%	261.69%	103.14%

¹American Indian and Alaska Native Alone, not Latino

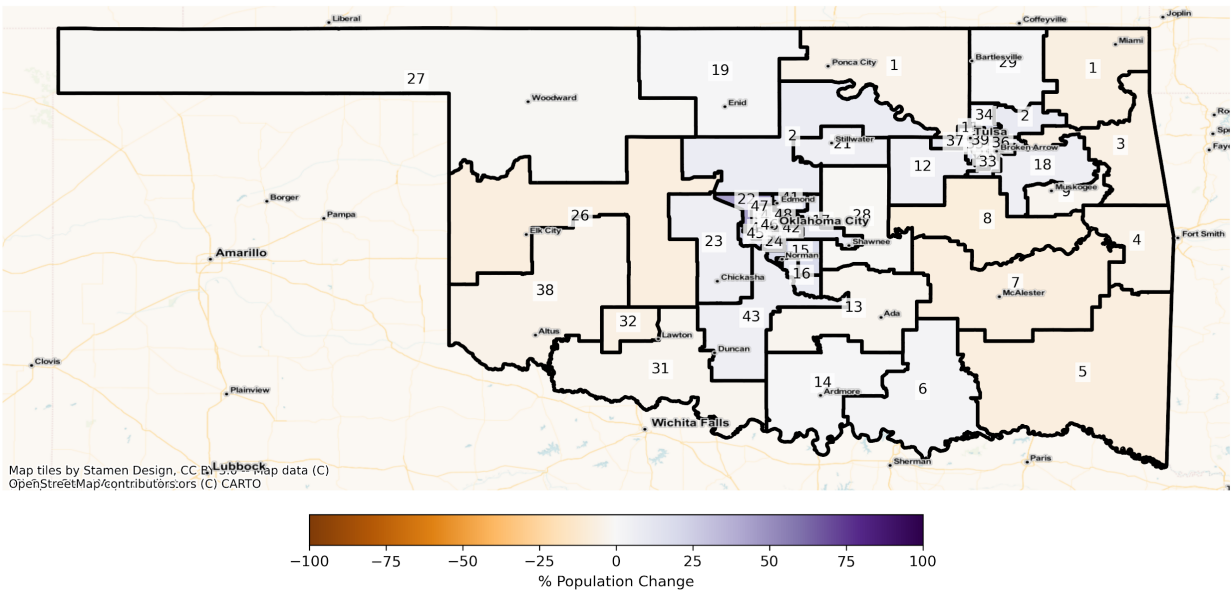
²Native Hawaiian and Pacific Islander Alone, not Latino

State Senate

The charts below display the percent change in population from 2010 to 2020 for the listed group. Please note that the color bars are fixed to be from -100% to 100% and these maps are displayed in brown to purple. If the percent change in population was outside of this range, the color scheme changes to red to green to indicate a change.

Total Population

OK State Senate Districts
Population % Change from 2010 to 2020
Total Population



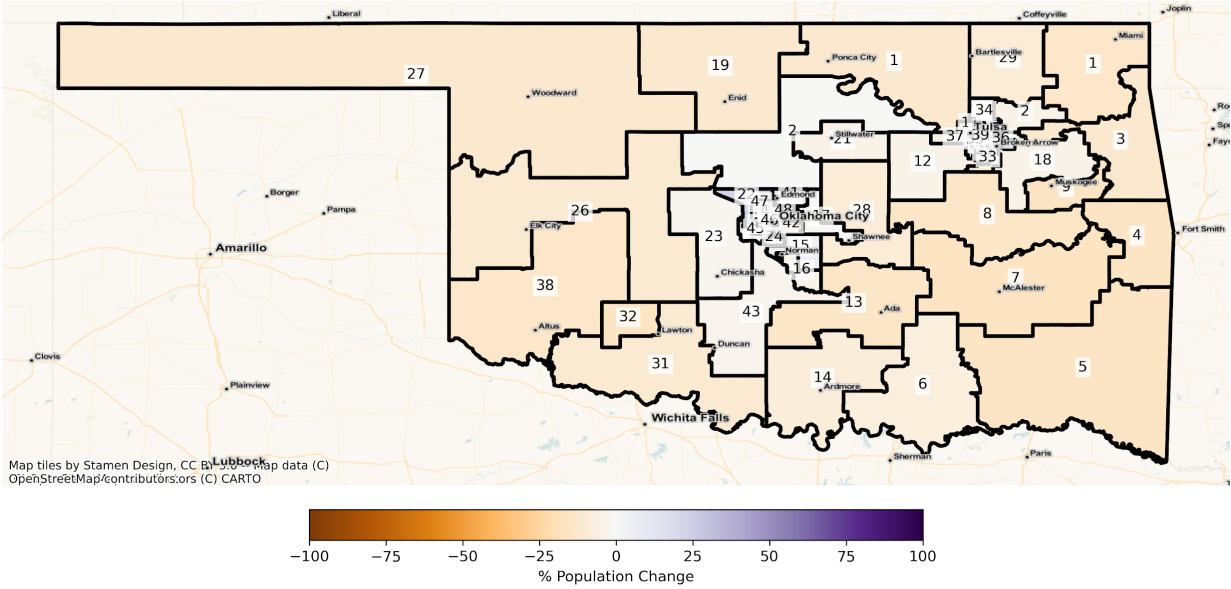
Total Population from 2010 to 2020 at State Senate District Level

DISTRICT	Total Population 2010	Total Population 2020	Total Population % Change
1	78758	73632	-6.51%
2	77628	84802	9.24%
3	77462	73037	-5.71%
4	78163	74327	-4.91%
5	77654	72169	-7.06%
6	78907	81097	2.78%
7	78233	72432	-7.42%
8	77472	71199	-8.10%
9	78021	76006	-2.58%
10	78842	75658	-4.04%
11	77378	77546	0.22%
12	77522	81802	5.52%
13	78833	76543	-2.90%
14	77709	78756	1.35%
15	78847	93532	18.62%
16	78785	85566	8.61%
17	78237	84854	8.46%
18	77437	81942	5.82%
19	78923	79690	0.97%
20	78438	84432	7.64%
21	77372	81650	5.53%
22	78083	112414	43.97%
23	77448	82285	6.25%
24	78934	91838	16.35%
25	77473	94422	21.88%
26	78281	72725	-7.10%
27	77888	77110	-1.00%
28	78908	78115	-1.00%
29	77563	78195	0.81%
30	78904	83455	5.77%

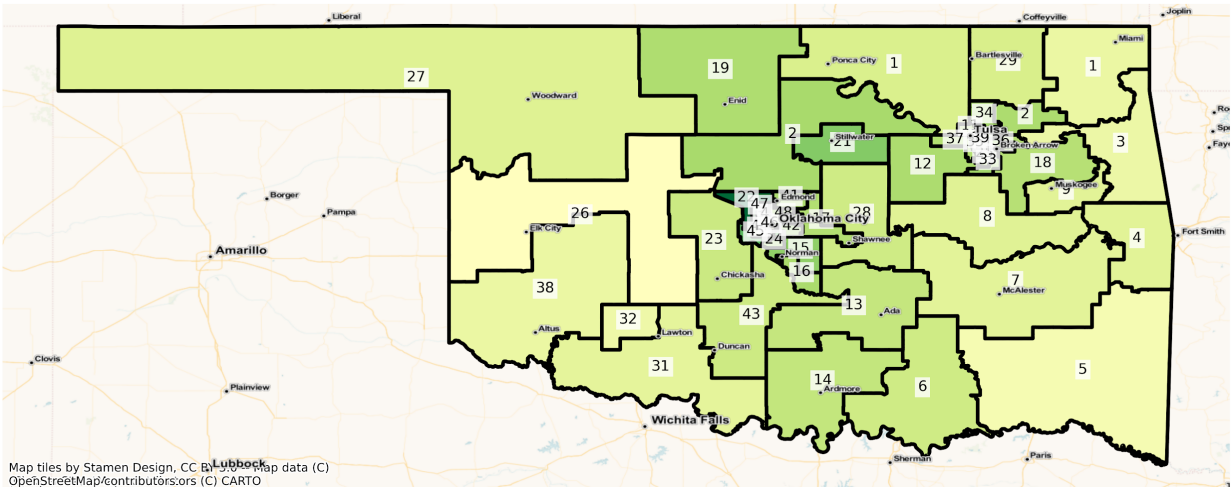
31	77667	75557	-2.72%
32	77508	73217	-5.54%
33	77436	85376	10.25%
34	78093	91273	16.88%
35	77393	79849	3.17%
36	77489	93392	20.52%
37	77769	86821	11.64%
38	78821	75411	-4.33%
39	77752	78526	1.00%
40	78898	80490	2.02%
41	78319	91269	16.53%
42	78744	83409	5.92%
43	78266	83121	6.20%
44	78308	93990	20.03%
45	78886	97508	23.61%
46	78069	75666	-3.08%
47	78924	99118	25.59%
48	78880	84093	6.61%

Population by Race and Ethnicity

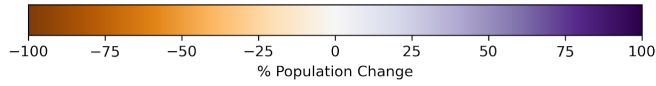
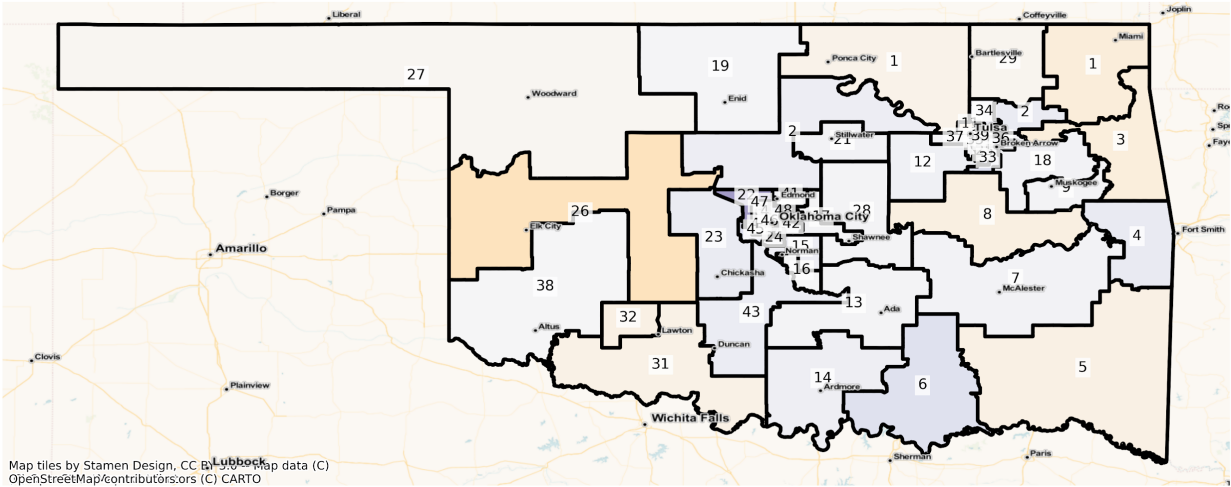
OK State Senate Districts
 Population % Change from 2010 to 2020
 Ethnicity: Not Latino White alone



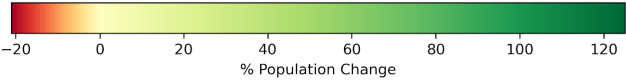
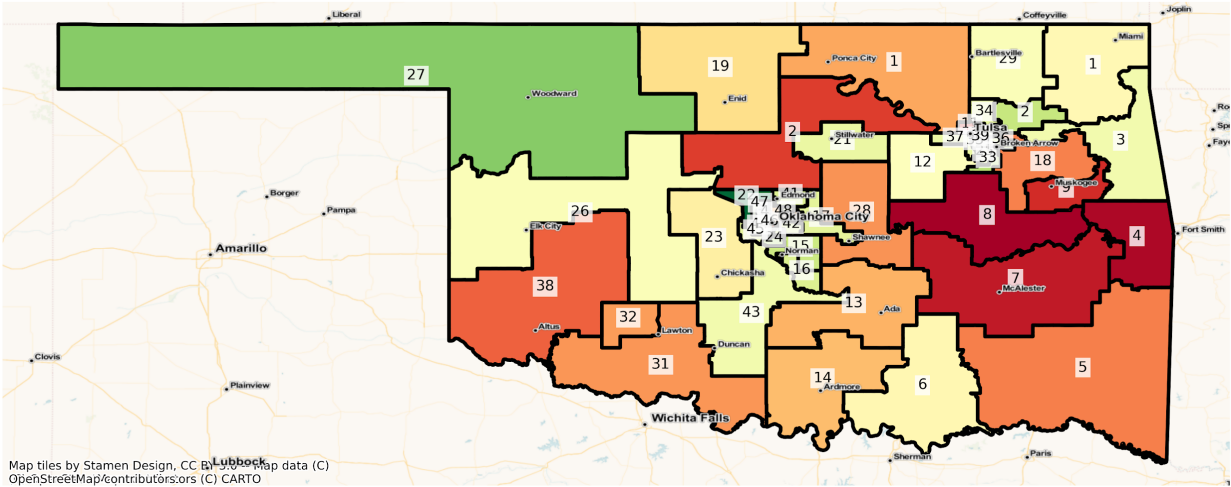
OK State Senate Districts
 Population % Change from 2010 to 2020
 Ethnicity: Hispanic or Latino



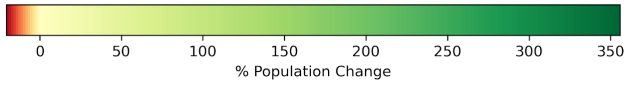
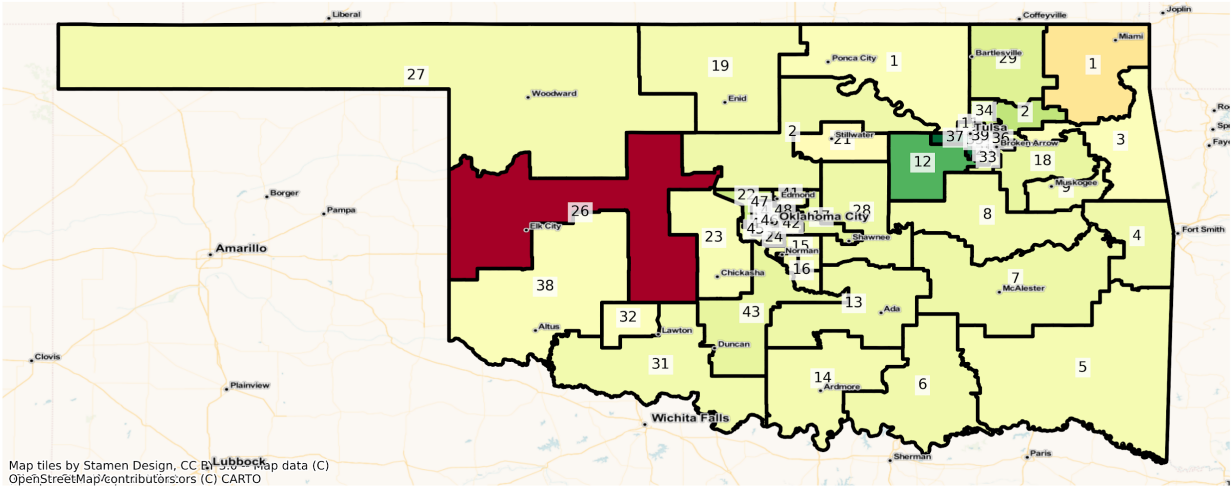
OK State Senate Districts
 Population % Change from 2010 to 2020
 Ethnicity: Not Latino American Indian and Alaska Native alone



OK State Senate Districts
 Population % Change from 2010 to 2020
 Ethnicity: Not Latino African American alone

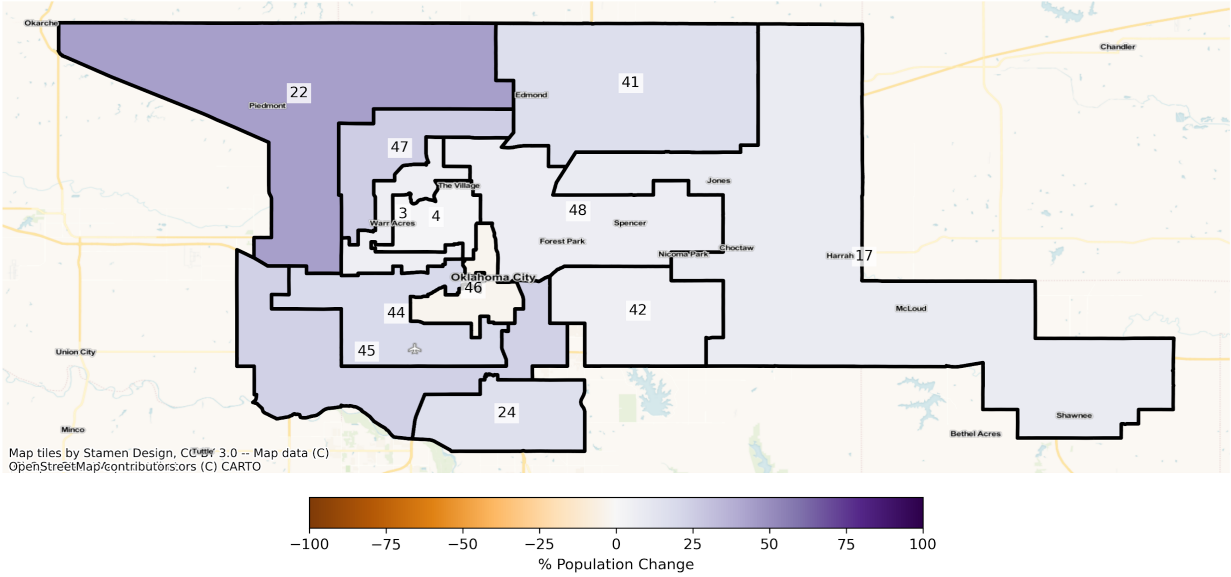


OK State Senate Districts
 Population % Change from 2010 to 2020
 Ethnicity: Not Latino Asian alone

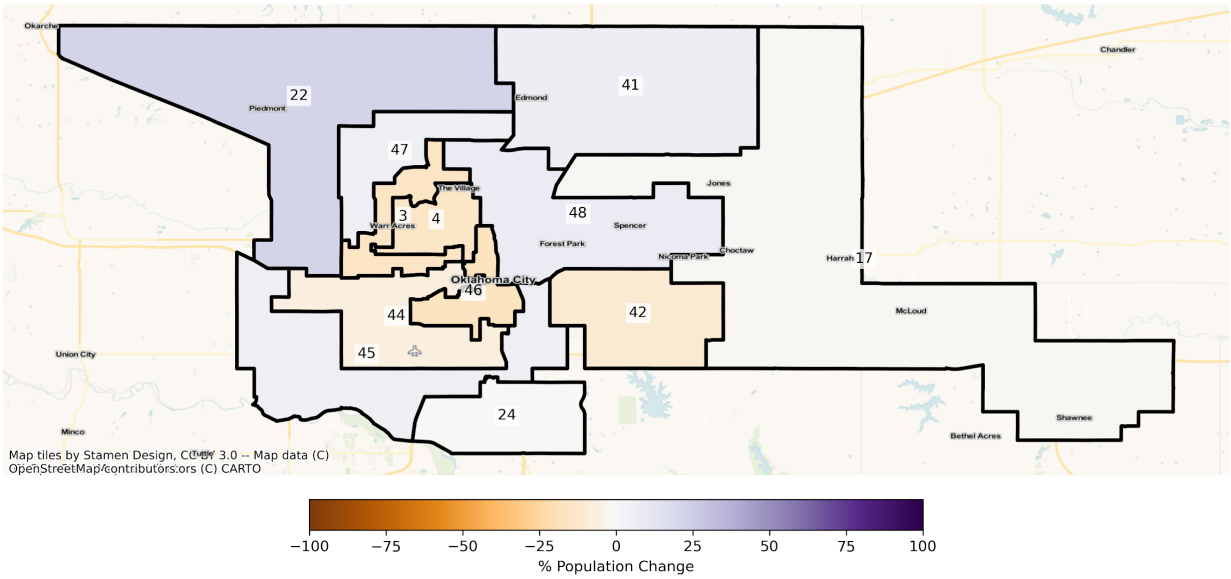


Oklahoma City

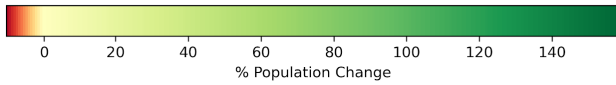
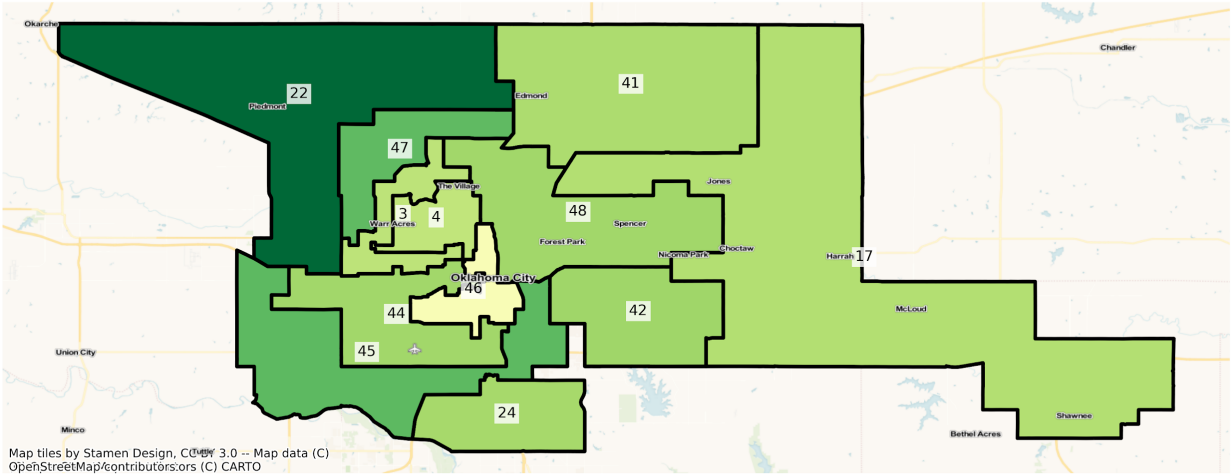
OK Oklahoma City State Senate Districts
Population % Change from 2010 to 2020
Total Population



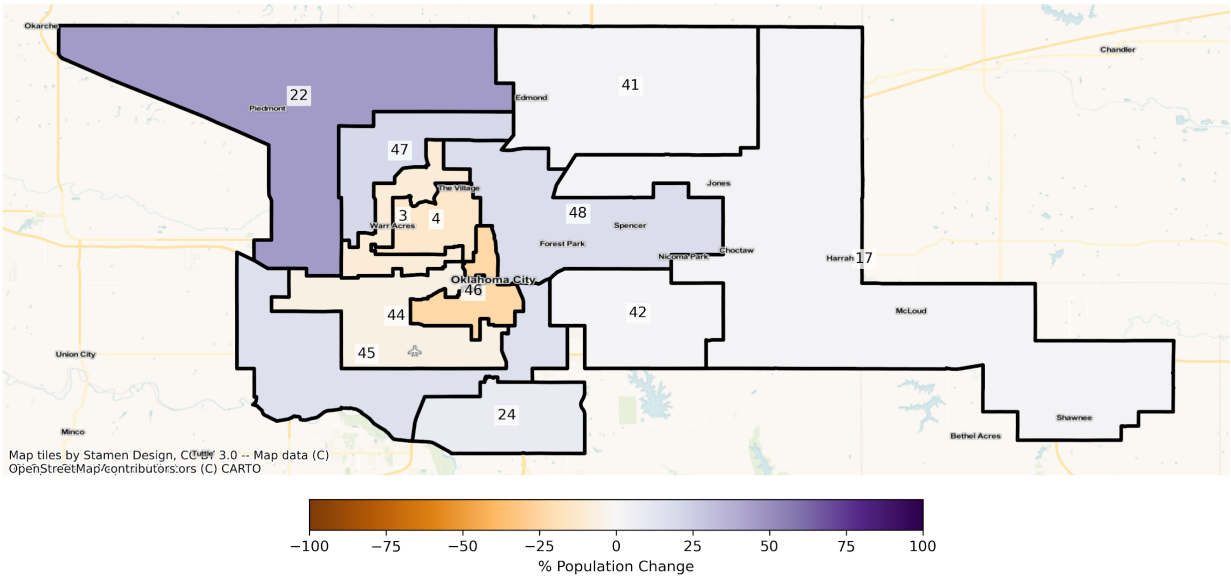
OK Oklahoma City State Senate Districts
Population % Change from 2010 to 2020
Ethnicity: Not Latino White alone



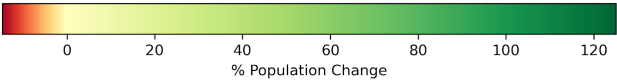
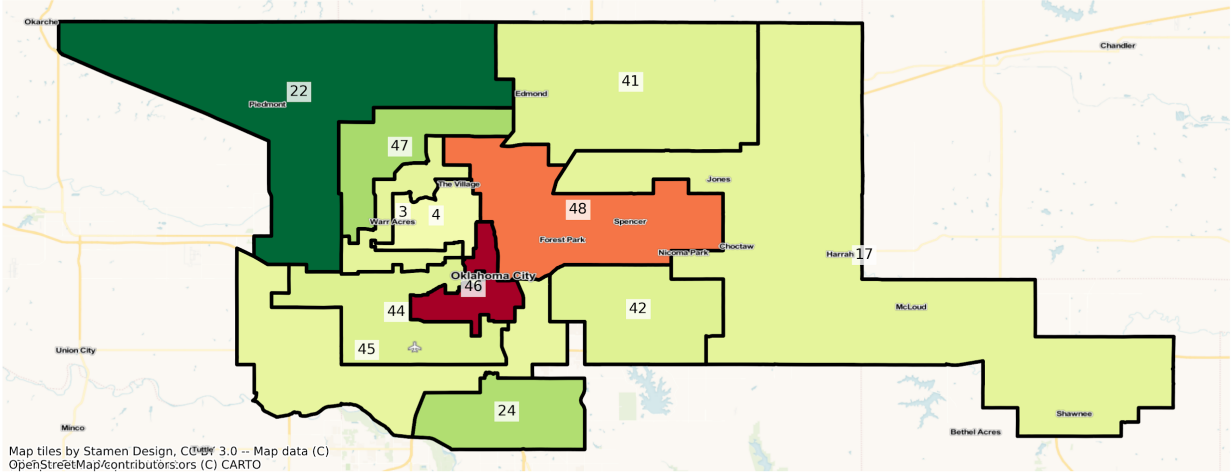
OK Oklahoma City State Senate Districts
Population % Change from 2010 to 2020
Ethnicity: Hispanic or Latino



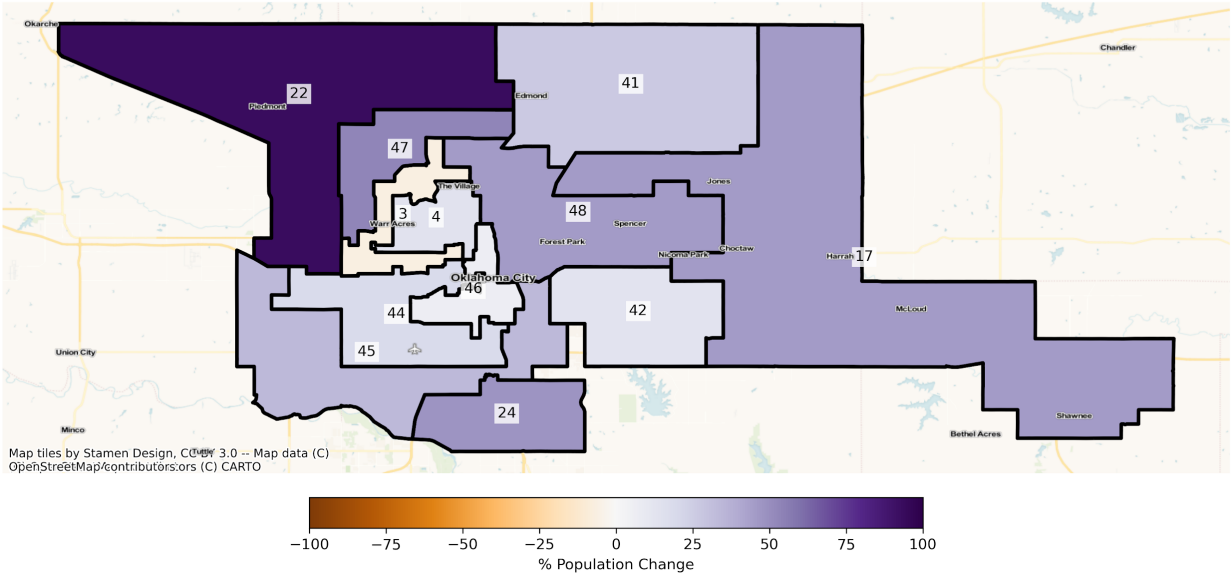
OK Oklahoma City State Senate Districts
 Population % Change from 2010 to 2020
 Ethnicity: Not Latino American Indian and Alaska Native alone



OK Oklahoma City State Senate Districts
Population % Change from 2010 to 2020
Ethnicity: Not Latino African American alone

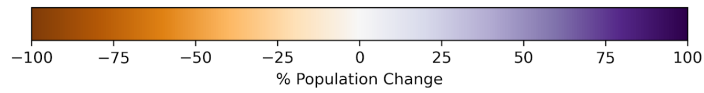
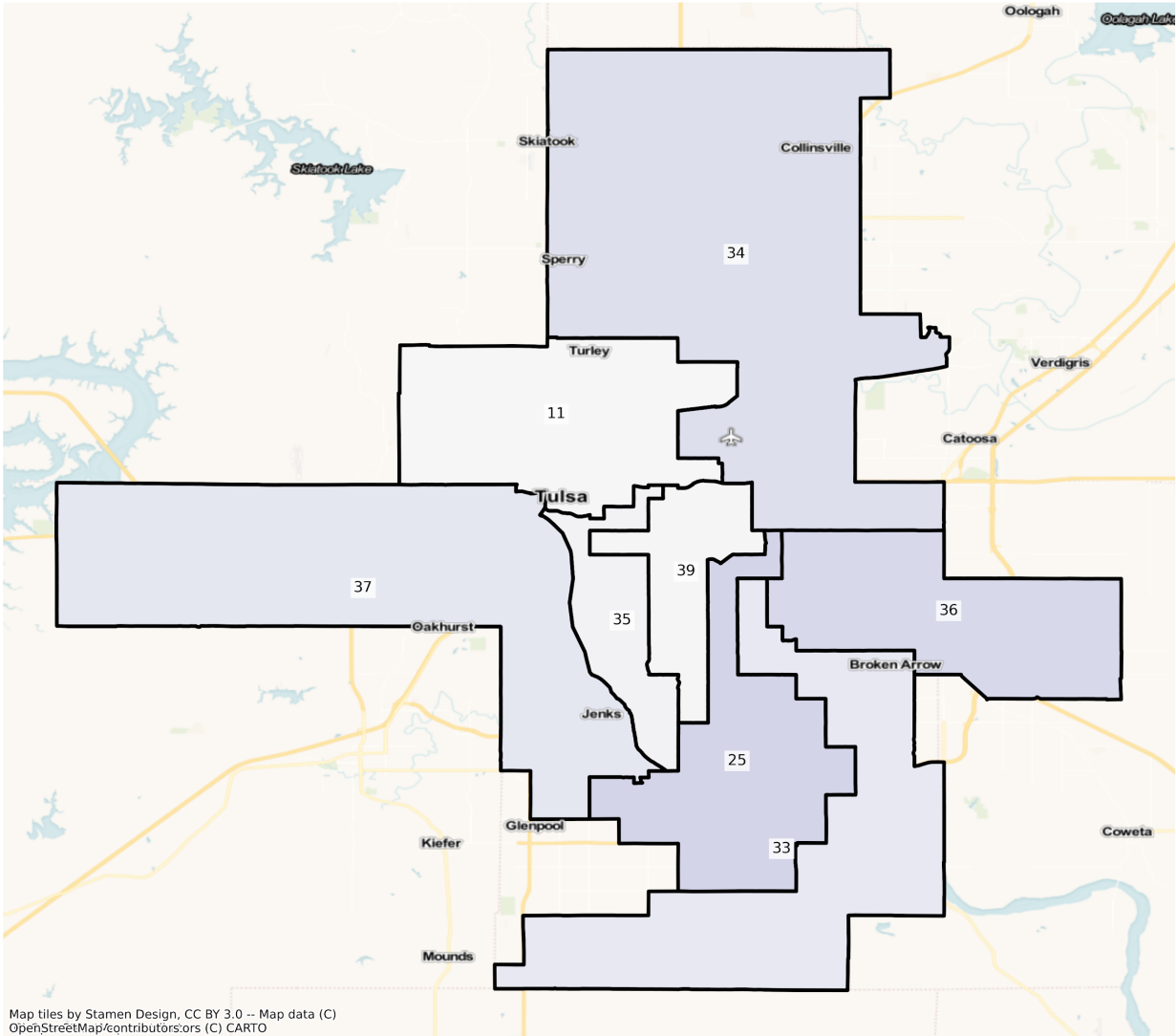


OK Oklahoma City State Senate Districts
Population % Change from 2010 to 2020
Ethnicity: Not Latino Asian alone

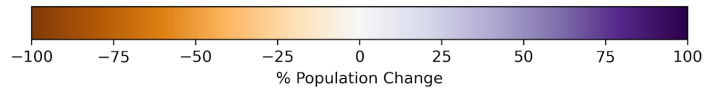
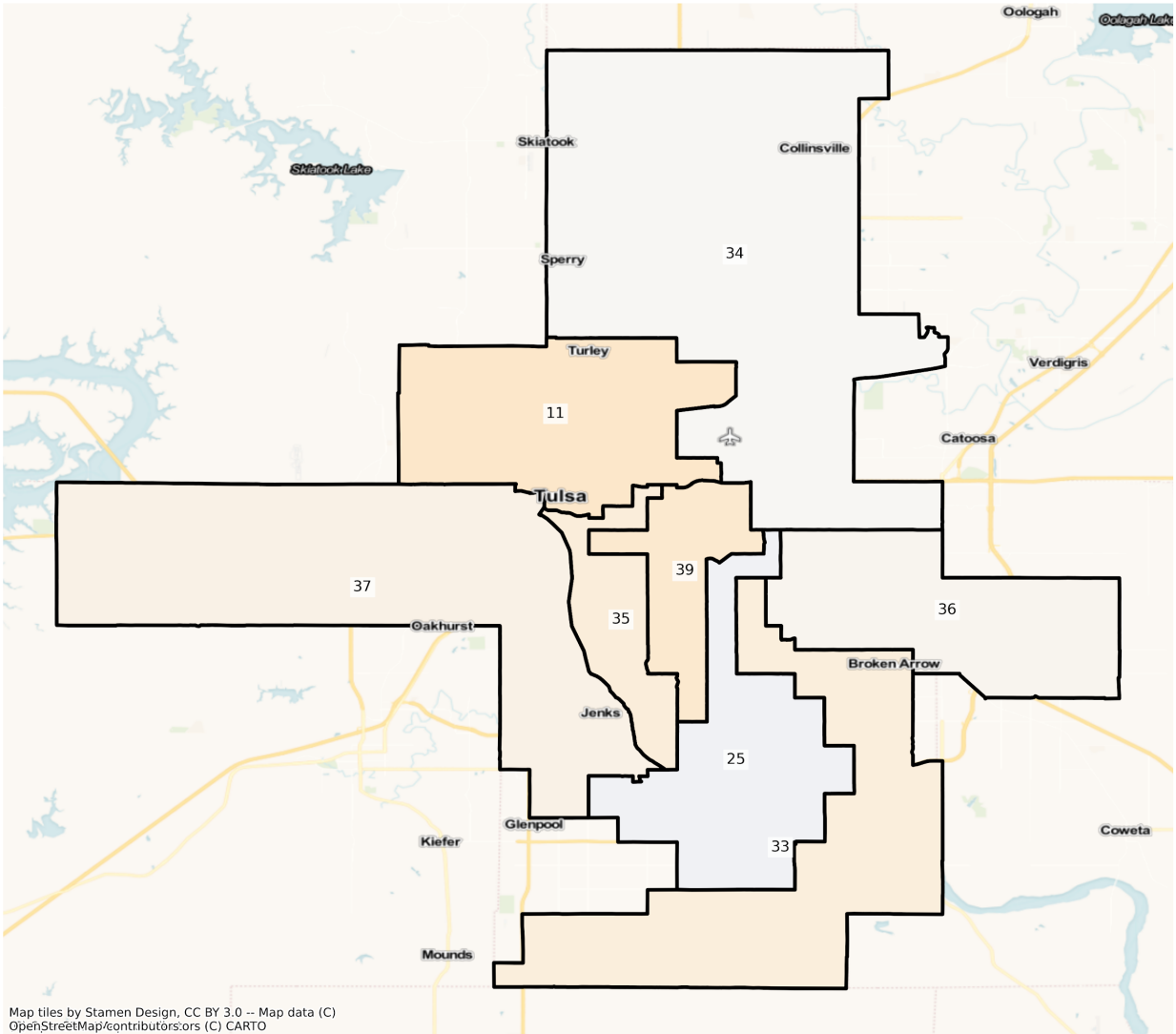


Tulsa

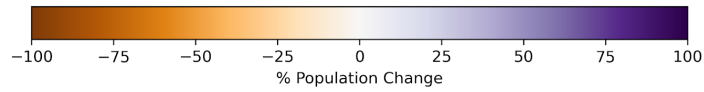
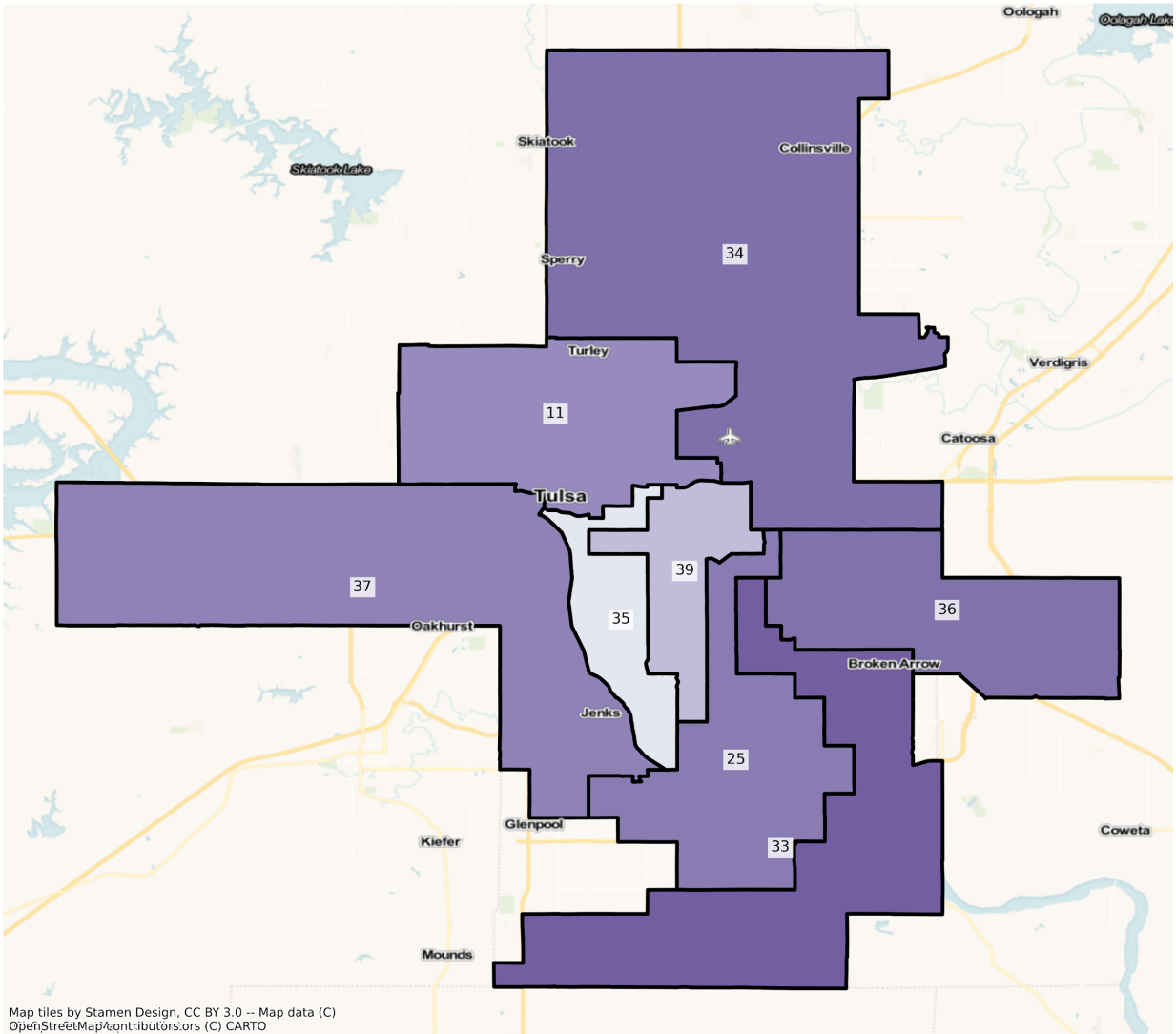
OK Tulsa State Senate Districts
Population % Change from 2010 to 2020
Total Population



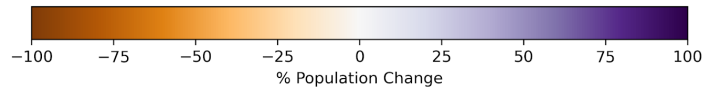
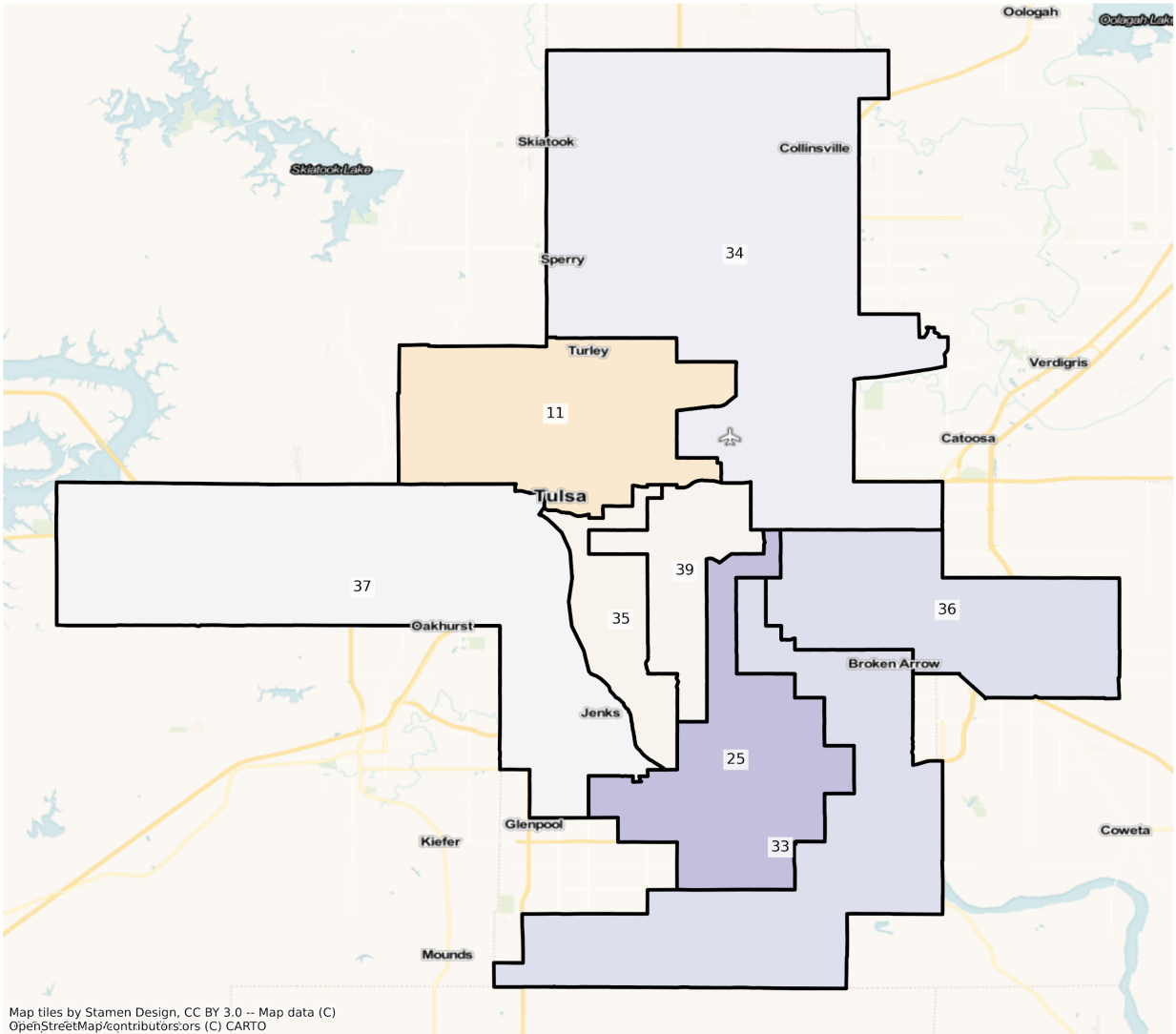
OK Tulsa State Senate Districts
Population % Change from 2010 to 2020
Ethnicity: Not Latino White alone



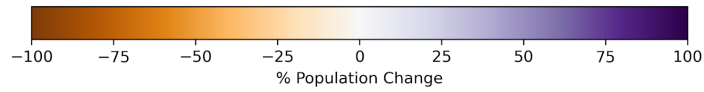
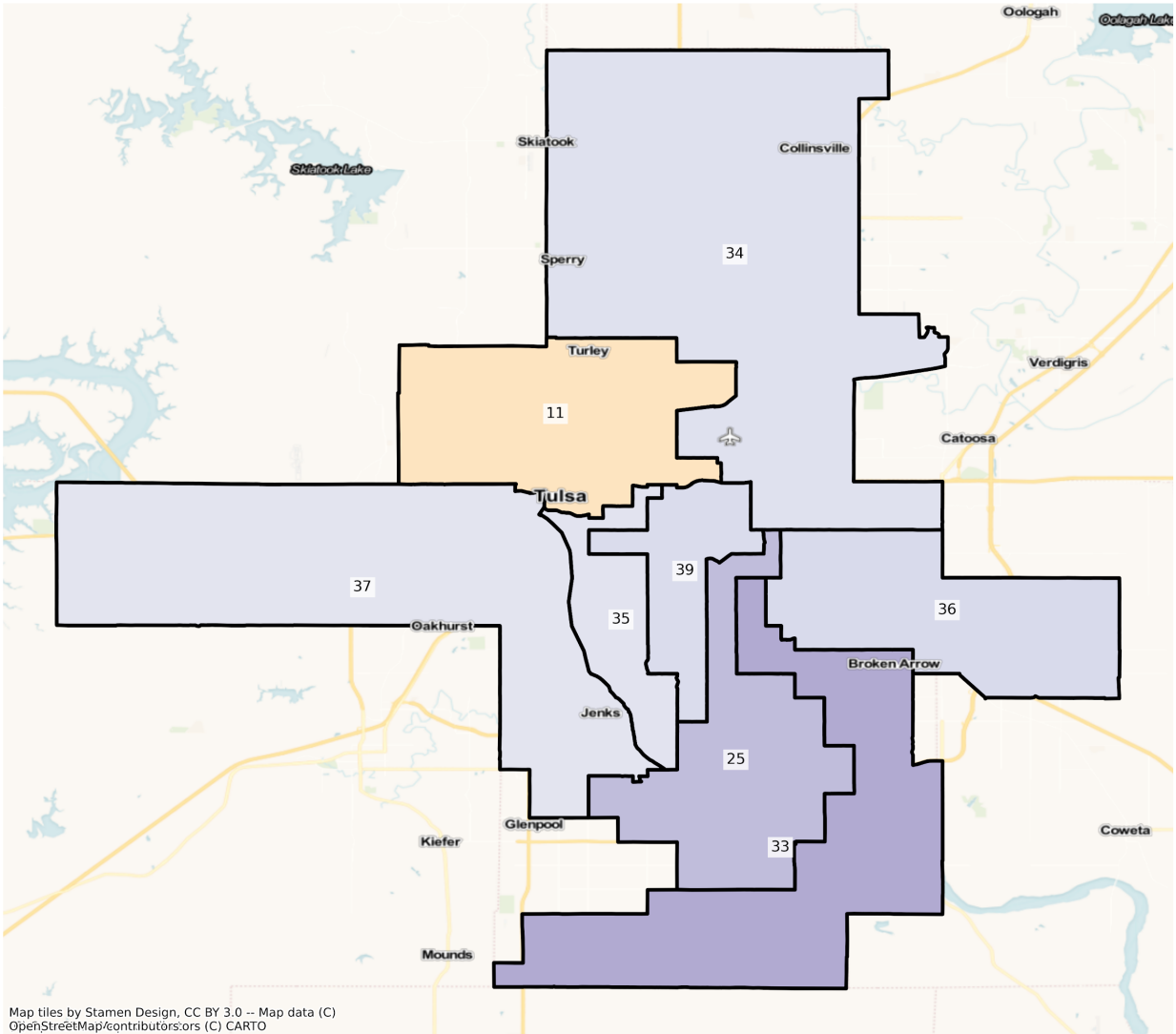
OK Tulsa State Senate Districts
Population % Change from 2010 to 2020
Ethnicity: Hispanic or Latino



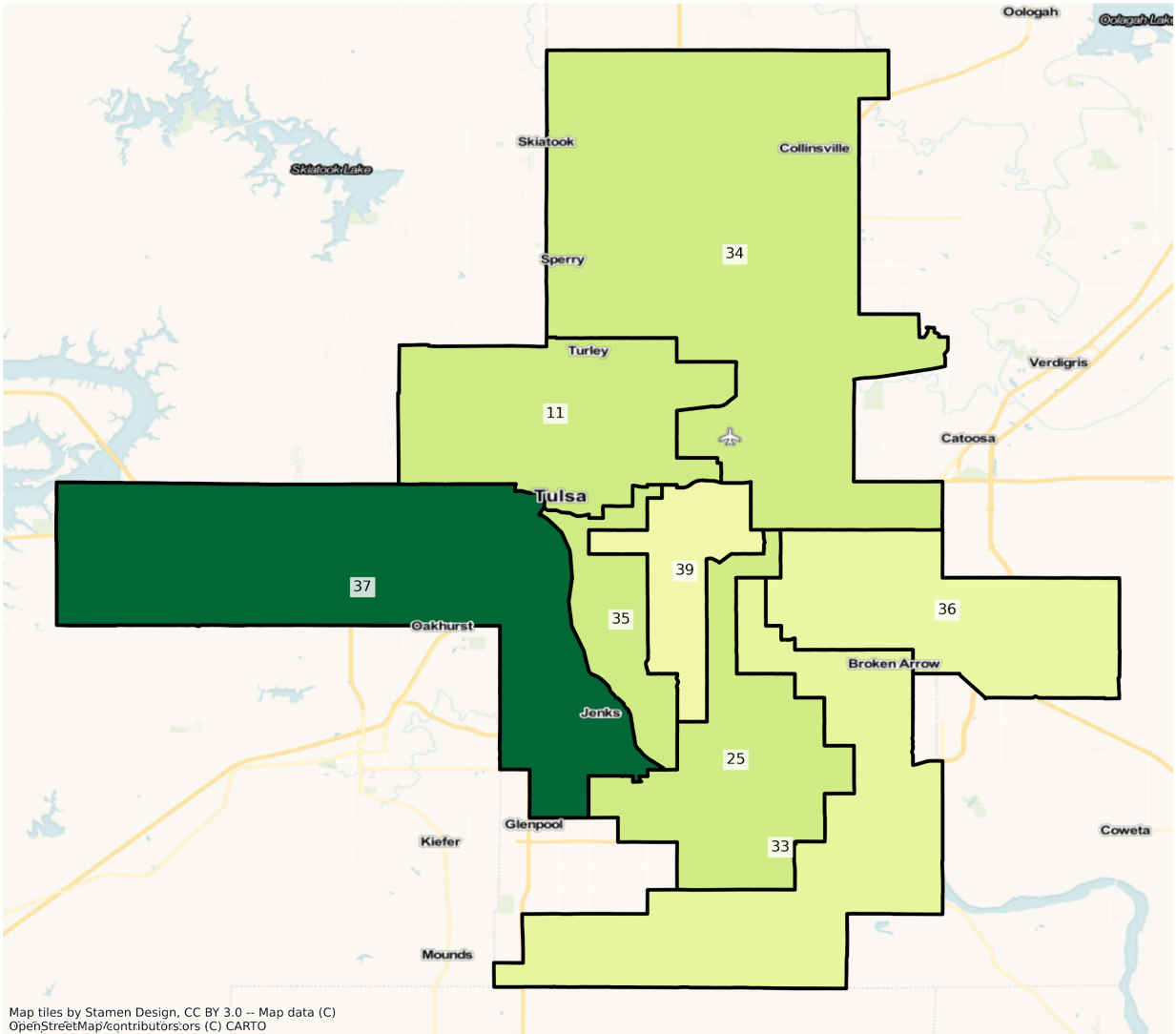
OK Tulsa State Senate Districts
Population % Change from 2010 to 2020
Ethnicity: Not Latino American Indian and Alaska Native alone



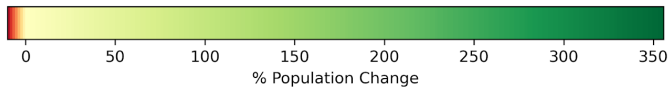
OK Tulsa State Senate Districts
Population % Change from 2010 to 2020
Ethnicity: Not Latino African American alone



OK Tulsa State Senate Districts
Population % Change from 2010 to 2020
Ethnicity: Not Latino Asian alone



Map tiles by Stamen Design, CC BY 3.0 -- Map data (C) OpenStreetMap/contributors; ors (C) CARTO



2010 Population by Race and Ethnicity at the State Senate District Level

DISTRICT	Total Population	Hispanic or Latino Origin	White Alone, not Latino	African American Alone, not Latino	AIAN Alone, not Latino ¹	Asian Alone, not Latino	NHPI Alone, not Latino ²	Other Alone, not Latino	Two or More, not Latino
1	78758	2547	52135	747	16508	427	315	39	6040
2	77628	3263	57104	807	9878	722	35	50	5769
3	77462	2993	44148	241	22602	645	42	26	6765
4	78163	3062	55200	1513	12278	410	28	27	5645
5	77654	4158	51479	5051	12265	225	9	23	4444
6	78907	4939	57621	1227	9745	309	19	30	5017
7	78233	2797	55628	1819	12099	289	25	26	5550
8	77472	2097	50864	5070	13532	227	30	28	5624
9	78021	5111	42400	7783	16368	564	25	24	5746
10	78842	3507	58515	1714	10373	306	14	26	4387
11	77378	12835	23421	32499	3915	322	107	87	4192
12	77522	2645	60040	1744	7817	292	50	47	4887
13	78833	3632	56669	2297	11113	389	34	32	4667
14	77709	4591	56972	3644	7340	617	11	27	4507
15	78847	4599	60096	3960	3629	2712	84	85	3682
16	78785	5054	59370	3943	4031	2318	41	98	3930
17	78237	3388	60450	2569	7212	583	44	72	3919
18	77437	3078	53012	2804	11562	759	24	47	6151
19	78923	6347	64507	2056	1938	621	1096	68	2290
20	78438	4129	62342	4150	4403	290	32	42	3050
21	77372	2990	61677	2757	3494	2679	34	71	3670
22	78083	3827	64103	2914	2086	2350	62	58	2683
23	77448	5058	61949	2500	4612	325	47	36	2921
24	78934	6391	59056	3365	3066	2976	39	69	3972
25	77473	6800	57945	3984	3349	2159	19	77	3140
26	78281	9603	54834	2066	8842	322	15	40	2559
27	77888	14552	58898	986	1466	596	25	69	1296

28	78908	2371	61654	2078	8206	204	43	33	4319
29	77563	3118	57077	1433	9834	727	35	37	5302
30	78904	14090	46497	10180	2406	2171	90	103	3367
31	77667	7964	52806	8407	4091	892	208	75	3224
32	77508	9131	44450	13250	4083	1887	440	94	4173
33	77436	5420	57080	4298	3700	2997	50	69	3822
34	78093	10404	51111	4430	6239	1380	79	54	4396
35	77393	6251	54370	7399	3539	2088	40	95	3611
36	77489	14944	45245	6953	3517	3084	33	113	3600
37	77769	4185	57675	3873	6728	776	23	62	4447
38	78821	12219	57053	3774	2808	633	69	66	2199
39	77752	6804	56817	5119	3843	1334	35	80	3720
40	78898	10571	51595	7613	2324	3372	77	91	3255
41	78319	3958	62500	4499	1974	2379	76	86	2847
42	78744	5012	52029	12469	2930	1588	126	84	4506
43	78266	4997	64179	959	4502	291	22	16	3300
44	78308	20523	41983	6551	3563	2585	46	90	2967
45	78886	7567	54757	6474	2821	3776	56	70	3365
46	78069	39184	27035	5101	3033	1402	39	110	2165
47	78924	4053	56558	8706	1584	5005	40	91	2887
48	78880	5241	22458	44295	1485	1149	44	111	4097

¹American Indian and Alaska Native Alone, not Latino

²Native Hawaiian and Pacific Islander Alone, not Latino

2020 Population by Race and Ethnicity at the State Senate District Level

DISTRICT	Total Population	Hispanic or Latino Origin	White Alone, not Latino	African American Alone, not Latino	AIAN Alone, not Latino ¹	Asian Alone, not Latino	NHPI Alone, not Latino ²	Other Alone, not Latino	Two or More, not Latino
1	73632	2960	45112	740	15052	413	246	127	8982
2	84802	5197	54628	1081	10685	1471	45	261	11434
3	73037	3459	38651	260	20786	694	53	124	9010

4	74327	3813	46581	1205	13409	524	37	147	8611
5	72169	4495	43539	4471	11576	265	475	142	7206
6	81097	6787	52956	1213	11224	394	20	259	8244
7	72432	3454	46535	1480	12500	380	59	129	7895
8	71199	2617	43555	4003	12586	284	29	187	7938
9	76006	6328	36046	6441	16770	694	39	205	9483
10	75658	4551	51258	1562	9898	335	284	136	7634
11	77546	19442	20204	26938	3442	592	215	261	6452
12	81802	4193	57273	1770	8218	966	73	154	9155
13	76543	5223	48601	2114	11430	514	29	183	8449
14	78756	6661	51706	3386	7784	751	68	787	7613
15	93532	8009	63465	5197	3861	3212	109	1036	8643
16	85566	8067	56915	4793	4082	2799	59	403	8448
17	84854	5271	59726	3002	7397	851	46	239	8322
18	81942	4686	50903	2488	12011	1064	44	236	10510
19	79690	10028	56680	1970	1970	742	2933	190	5177
20	84432	6666	61899	3491	4707	375	31	318	6945
21	81650	5372	58929	3123	3613	2662	53	298	7600
22	112414	9897	78323	6557	3044	4544	78	366	9605
23	82285	7109	60341	2445	5005	376	51	173	6785
24	91838	10363	59011	4844	3350	4417	63	366	9424
25	94422	10644	60331	5290	4383	3946	61	351	9416
26	72725	9596	48768	2136	7300	256	31	99	4539
27	77110	18426	51583	1600	1437	712	9	168	3175
28	78115	3271	55842	1867	8437	270	33	222	8173
29	78195	4105	51657	1486	9581	1150	19	155	10042
30	83455	20961	39518	11960	2179	2034	106	347	6350
31	75557	9738	46799	7572	3881	1106	249	272	5940
32	73217	10454	37415	12001	3847	2040	568	330	6562
33	85376	8969	52281	6038	4324	4281	56	316	9111
34	91273	16724	50495	5119	6655	2505	155	291	9329

35	79849	6969	49574	8398	3413	3841	99	313	7242
36	93392	23896	44045	8341	4108	4189	100	303	8410
37	86821	6470	54852	4387	6879	3536	269	271	10157
38	75411	14260	49471	3266	2842	689	82	160	4641
39	78526	9000	49720	6049	3764	1711	77	298	7907
40	80490	15418	44137	8260	2009	3852	49	408	6357
41	91269	6294	66520	5438	2033	3013	96	299	7576
42	83409	8311	45938	15138	2997	1801	168	340	8716
43	83121	6954	61957	1041	4822	413	53	229	7652
44	93990	33971	38941	7962	3354	3077	306	325	6054
45	97508	15015	57844	7459	3270	5073	115	333	8399
46	75666	41205	22439	4352	2299	1495	88	231	3557
47	99118	7998	60002	12948	1916	7667	110	422	8055
48	84093	8633	24205	40553	1751	1675	130	392	6754

¹American Indian and Alaska Native Alone, not Latino

²Native Hawaiian and Pacific Islander Alone, not Latino

Percent Change of Population from 2010 to 2020 by Race and Ethnicity at State Senate District Level

DISTRICT	Total Population	Hispanic or Latino Origin	White Alone, not Latino	African American Alone, not Latino	AIAN Alone, not Latino ¹	Asian Alone, not Latino	NHPI Alone, not Latino ²	Other Alone, not Latino	Two or More, not Latino
1	-6.51%	16.22%	-13.47%	-0.94%	-8.82%	-3.28%	-21.90%	225.64%	48.71%
2	9.24%	59.27%	-4.34%	33.95%	8.17%	103.74%	28.57%	422.00%	98.20%
3	-5.71%	15.57%	-12.45%	7.88%	-8.03%	7.60%	26.19%	376.92%	33.19%
4	-4.91%	24.53%	-15.61%	-20.36%	9.21%	27.80%	32.14%	444.44%	52.54%
5	-7.06%	8.10%	-15.42%	-11.48%	-5.62%	17.78%	5177.78%	517.39%	62.15%
6	2.78%	37.42%	-8.10%	-1.14%	15.18%	27.51%	5.26%	763.33%	64.32%
7	-7.42%	23.49%	-16.35%	-18.64%	3.31%	31.49%	136.00%	396.15%	42.25%
8	-8.10%	24.80%	-14.37%	-21.05%	-6.99%	25.11%	-3.33%	567.86%	41.15%
9	-2.58%	23.81%	-14.99%	-17.24%	2.46%	23.05%	56.00%	754.17%	65.04%
10	-4.04%	29.77%	-12.40%	-8.87%	-4.58%	9.48%	1928.57%	423.08%	74.01%

11	0.22%	51.48%	-13.74%	-17.11%	-12.08%	83.85%	100.93%	200.00%	53.91%
12	5.52%	58.53%	-4.61%	1.49%	5.13%	230.82%	46.00%	227.66%	87.33%
13	-2.90%	43.81%	-14.24%	-7.97%	2.85%	32.13%	-14.71%	471.88%	81.04%
14	1.35%	45.09%	-9.24%	-7.08%	6.05%	21.72%	518.18%	2814.81%	68.92%
15	18.62%	74.15%	5.61%	31.24%	6.39%	18.44%	29.76%	1118.82%	134.74%
16	8.61%	59.62%	-4.14%	21.56%	1.27%	20.75%	43.90%	311.22%	114.96%
17	8.46%	55.58%	-1.20%	16.85%	2.57%	45.97%	4.55%	231.94%	112.35%
18	5.82%	52.24%	-3.98%	-11.27%	3.88%	40.18%	83.33%	402.13%	70.87%
19	0.97%	58.00%	-12.13%	-4.18%	1.65%	19.48%	167.61%	179.41%	126.07%
20	7.64%	61.44%	-0.71%	-15.88%	6.90%	29.31%	-3.13%	657.14%	127.70%
21	5.53%	79.67%	-4.46%	13.28%	3.41%	-0.63%	55.88%	319.72%	107.08%
22	43.97%	158.61%	22.18%	125.02%	45.93%	93.36%	25.81%	531.03%	257.99%
23	6.25%	40.55%	-2.60%	-2.20%	8.52%	15.69%	8.51%	380.56%	132.28%
24	16.35%	62.15%	-0.08%	43.95%	9.26%	48.42%	61.54%	430.43%	137.26%
25	21.88%	56.53%	4.12%	32.78%	30.87%	82.77%	221.05%	355.84%	199.87%
26	-7.10%	-0.07%	-11.06%	3.39%	-17.44%	-20.50%	106.67%	147.50%	77.37%
27	-1.00%	26.62%	-12.42%	62.27%	-1.98%	19.46%	-64.00%	143.48%	144.98%
28	-1.00%	37.96%	-9.43%	-10.15%	2.82%	32.35%	-23.26%	572.73%	89.23%
29	0.81%	31.65%	-9.50%	3.70%	-2.57%	58.18%	-45.71%	318.92%	89.40%
30	5.77%	48.77%	-15.01%	17.49%	-9.43%	-6.31%	17.78%	236.89%	88.60%
31	-2.72%	22.28%	-11.38%	-9.93%	-5.13%	23.99%	19.71%	262.67%	84.24%
32	-5.54%	14.49%	-15.83%	-9.43%	-5.78%	8.11%	29.09%	251.06%	57.25%
33	10.25%	65.48%	-8.41%	40.48%	16.86%	42.84%	12.00%	357.97%	138.38%
34	16.88%	60.75%	-1.21%	15.55%	6.67%	81.52%	96.20%	438.89%	112.22%
35	3.17%	11.49%	-8.82%	13.50%	-3.56%	83.96%	147.50%	229.47%	100.55%
36	20.52%	59.90%	-2.65%	19.96%	16.80%	35.83%	203.03%	168.14%	133.61%
37	11.64%	54.60%	-4.89%	13.27%	2.24%	355.67%	1069.57%	337.10%	128.40%
38	-4.33%	16.70%	-13.29%	-13.46%	1.21%	8.85%	18.84%	142.42%	111.05%
39	1.00%	32.28%	-12.49%	18.17%	-2.06%	28.26%	120.00%	272.50%	112.55%
40	2.02%	45.85%	-14.45%	8.50%	-13.55%	14.23%	-36.36%	348.35%	95.30%
41	16.53%	59.02%	6.43%	20.87%	2.99%	26.65%	26.32%	247.67%	166.10%

42	5.92%	65.82%	-11.71%	21.41%	2.29%	13.41%	33.33%	304.76%	93.43%
43	6.20%	39.16%	-3.46%	8.55%	7.11%	41.92%	140.91%	1331.25%	131.88%
44	20.03%	65.53%	-7.25%	21.54%	-5.87%	19.03%	565.22%	261.11%	104.04%
45	23.61%	98.43%	5.64%	15.21%	15.92%	34.35%	105.36%	375.71%	149.60%
46	-3.08%	5.16%	-17.00%	-14.68%	-24.20%	6.63%	125.64%	110.00%	64.30%
47	25.59%	97.34%	6.09%	48.73%	20.96%	53.19%	175.00%	363.74%	179.01%
48	6.61%	64.72%	7.78%	-8.45%	17.91%	45.78%	195.45%	253.15%	64.85%

¹American Indian and Alaska Native Alone, not Latino

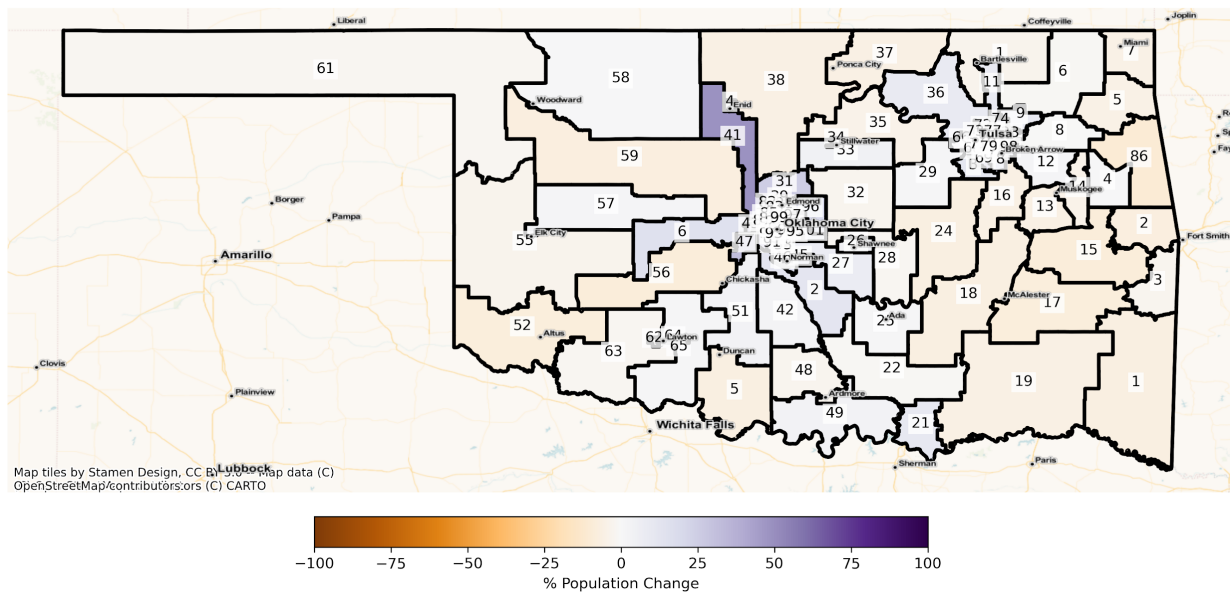
²Native Hawaiian and Pacific Islander Alone, not Latino

State House

The charts below display the percent change in population from 2010 to 2020 for the listed group. Please note that the color bars are fixed to be from -100% to 100% and these maps are displayed in brown to purple. If the percent change in population was outside of this range, the color scheme changes to red to green to indicate a change.

Total Population

OK State House Districts
Population % Change from 2010 to 2020
Total Population



Total Population from 2010 to 2020 at State House District Level

DISTRICT	Total Population 2010	Total Population 2020	Total Population % Change
1	36866	34467	-6.51%
2	37165	34473	-7.24%
3	36932	35800	-3.07%
4	37367	37420	0.14%
5	37394	35570	-4.88%
6	37150	36653	-1.34%
7	37149	35393	-4.73%
8	37199	37041	-0.42%
9	37325	40866	9.49%

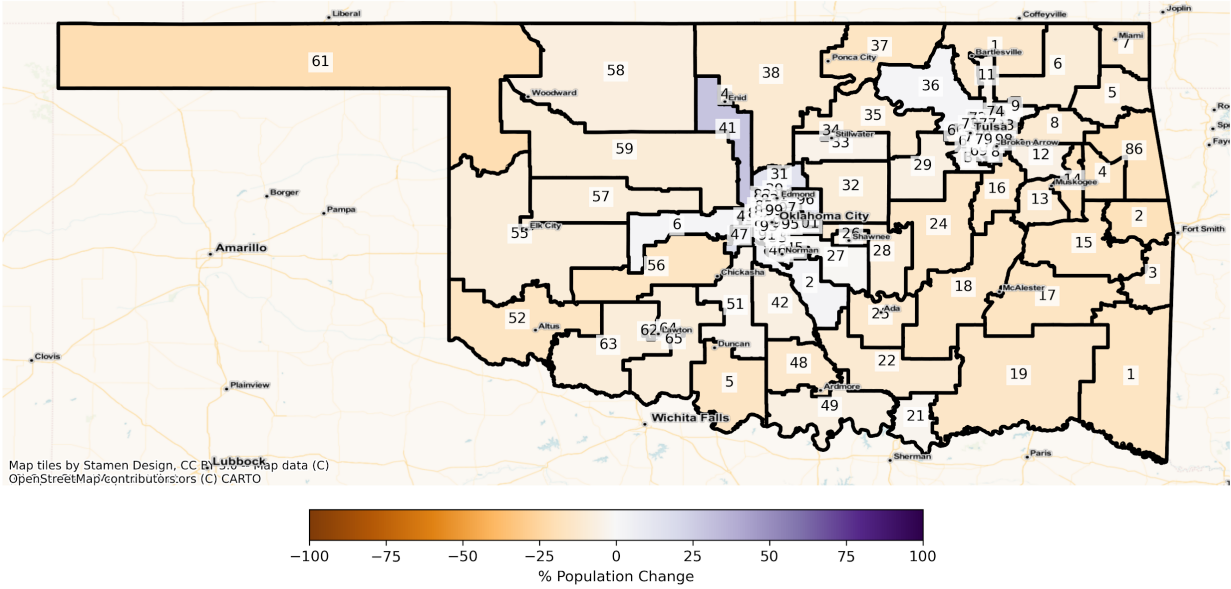
10	37164	35825	-3.60%
11	37227	40629	9.14%
12	37017	37717	1.89%
13	37108	34922	-5.89%
14	36975	35368	-4.35%
15	36900	33691	-8.70%
16	37019	34743	-6.15%
17	37026	34114	-7.86%
18	36876	34381	-6.77%
19	37291	35105	-5.86%
20	37164	41569	11.85%
21	37281	41134	10.34%
22	37269	36798	-1.26%
23	37458	38672	3.24%
24	36998	34594	-6.50%
25	37492	38065	1.53%
26	37114	38802	4.55%
27	37085	39911	7.62%
28	37151	36569	-1.57%
29	37203	37632	1.15%
30	36909	40961	10.98%
31	36831	46306	25.73%
32	36964	35882	-2.93%
33	37190	38660	3.95%
34	37140	39366	5.99%
35	37019	35343	-4.53%
36	37022	40350	8.99%
37	37314	35129	-5.86%
38	36887	34690	-5.96%
39	37474	44899	19.81%
40	37301	38297	2.67%

41	37217	55489	49.10%
42	36927	37928	2.71%
43	37356	49299	31.97%
44	37284	39119	4.92%
45	37028	44180	19.32%
46	37080	44559	20.17%
47	37437	49524	32.29%
48	37161	36262	-2.42%
49	37210	38636	3.83%
50	37451	34836	-6.98%
51	36972	38363	3.76%
52	37445	34381	-8.18%
53	37134	44948	21.04%
54	37220	41408	11.25%
55	37205	35977	-3.30%
56	36871	33552	-9.00%
57	37365	38083	1.92%
58	36998	37084	0.23%
59	37154	34296	-7.69%
60	36907	42491	15.13%
61	36937	36079	-2.32%
62	37363	35374	-5.32%
63	37246	36657	-1.58%
64	37200	33374	-10.28%
65	37104	37475	1.00%
66	37086	36320	-2.07%
67	36954	40176	8.72%
68	36870	45550	23.54%
69	37176	50493	35.82%
70	36930	37258	0.89%
71	37390	37715	0.87%

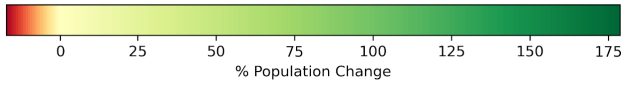
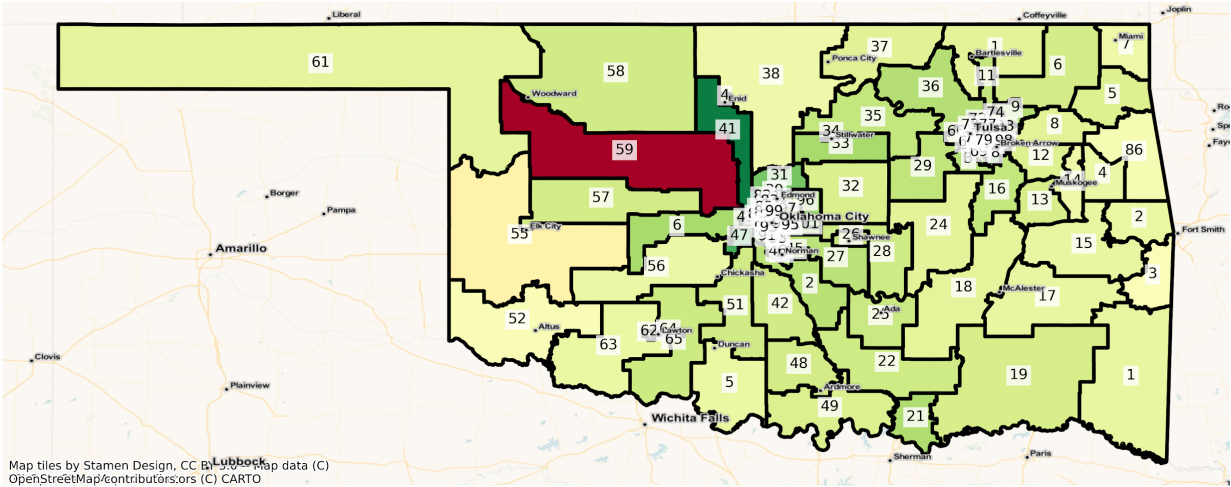
72	37277	37319	0.11%
73	36920	36412	-1.38%
74	37228	46193	24.08%
75	37310	48692	30.51%
76	37161	39673	6.76%
77	36860	38641	4.83%
78	36825	36742	-0.23%
79	37241	40638	9.12%
80	36924	45293	22.67%
81	36974	38124	3.11%
82	37210	59346	59.49%
83	37256	44015	18.14%
84	37216	39775	6.88%
85	37120	37479	0.97%
86	37134	33306	-10.31%
87	37059	38678	4.37%
88	37191	35480	-4.60%
89	37125	35134	-5.36%
90	37173	48395	30.19%
91	37169	42809	15.17%
92	37379	36531	-2.27%
93	37243	39815	6.91%
94	37289	38163	2.34%
95	36818	37273	1.24%
96	37254	44844	20.37%
97	37119	39188	5.57%
98	36870	43008	16.65%
99	37417	41386	10.61%
100	37460	39970	6.70%
101	37009	42302	14.30%

Population by Race and Ethnicity

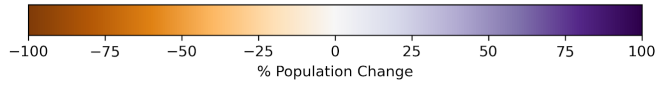
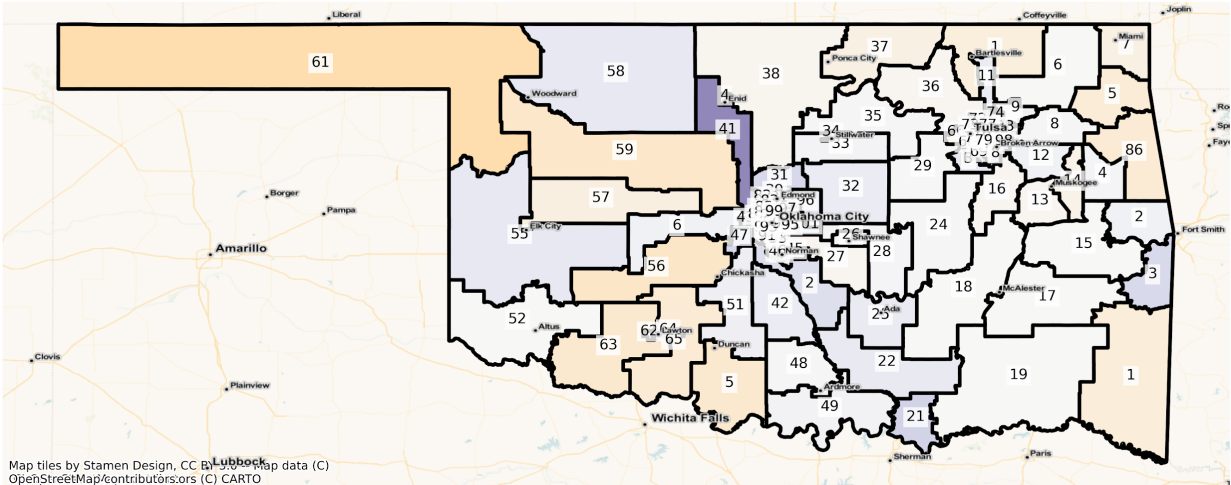
OK State House Districts
Population % Change from 2010 to 2020
Ethnicity: Not Latino White alone



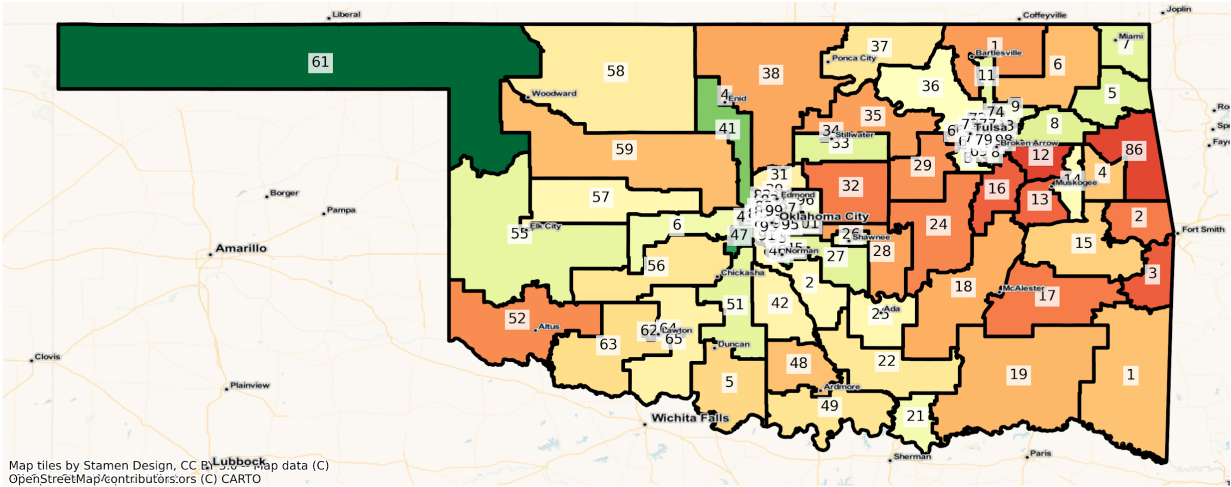
OK State House Districts
 Population % Change from 2010 to 2020
 Ethnicity: Hispanic or Latino



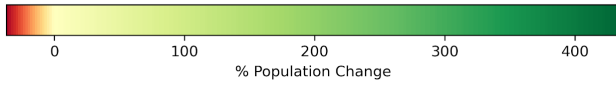
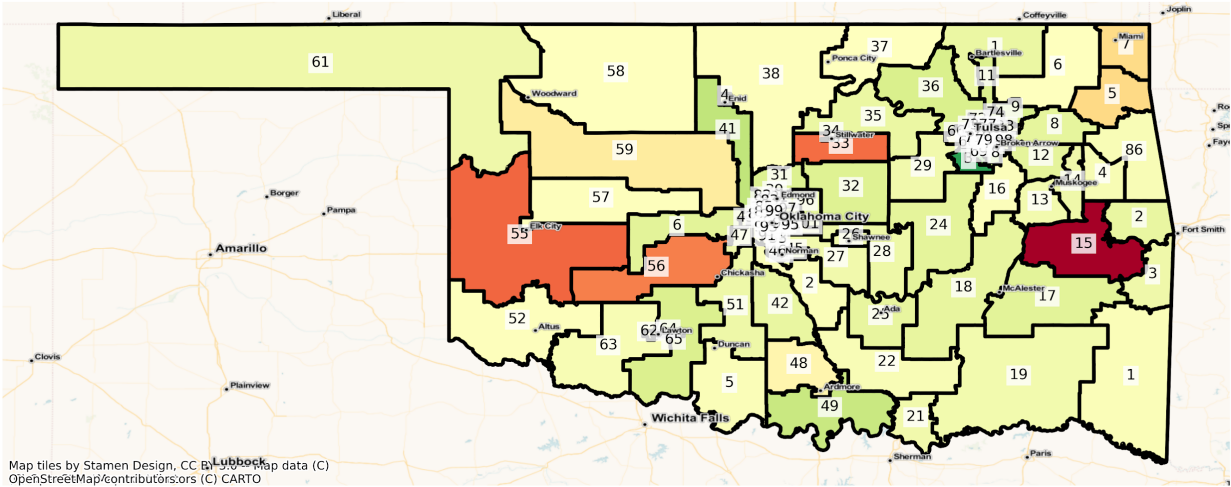
OK State House Districts
 Population % Change from 2010 to 2020
 Ethnicity: Not Latino American Indian and Alaska Native alone



OK State House Districts
 Population % Change from 2010 to 2020
 Ethnicity: Not Latino African American alone

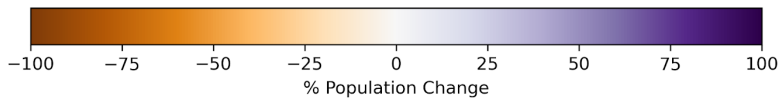


OK State House Districts
 Population % Change from 2010 to 2020
 Ethnicity: Not Latino Asian alone

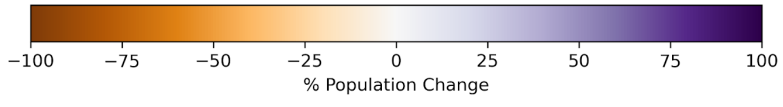


Enid

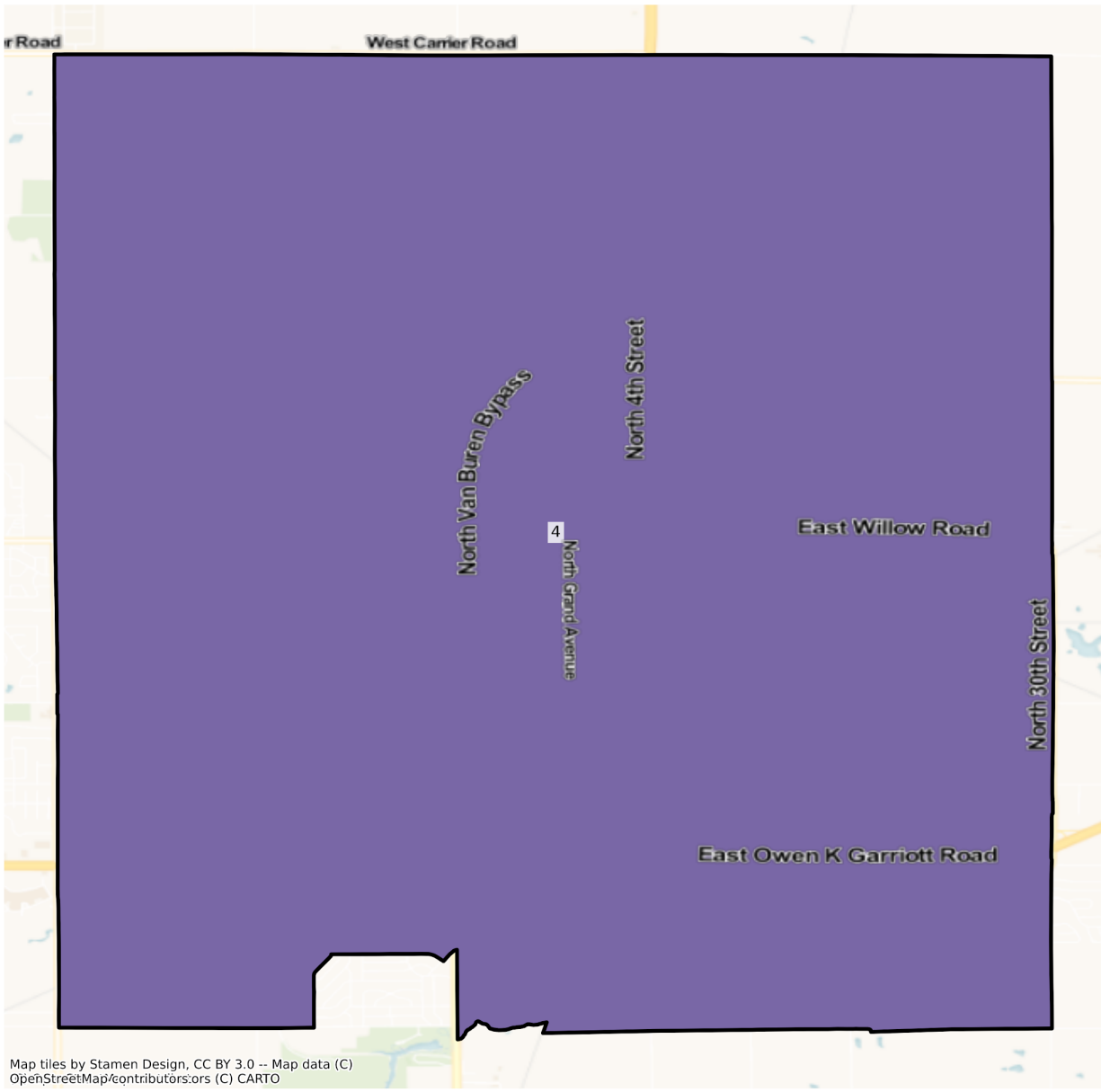
OK Enid State House Districts
Population % Change from 2010 to 2020
Total Population



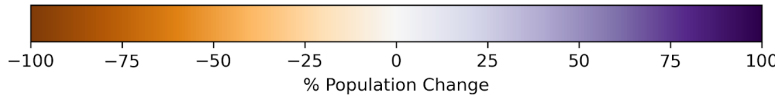
OK Enid State House Districts
Population % Change from 2010 to 2020
Ethnicity: Not Latino White alone



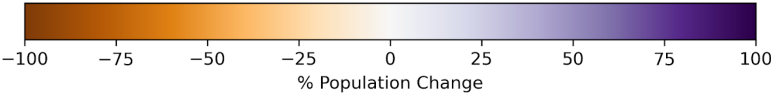
OK Enid State House Districts
Population % Change from 2010 to 2020
Ethnicity: Hispanic or Latino



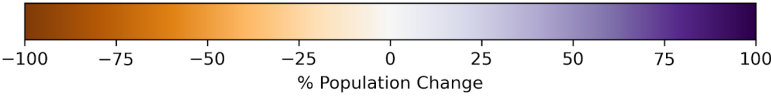
Map tiles by Stamen Design, CC BY 3.0 -- Map data (C)
OpenStreetMap/contributors/ors (C) CARTO



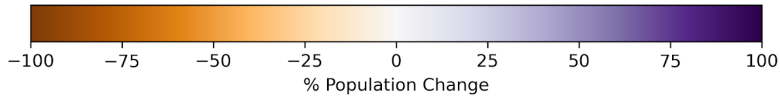
OK Enid State House Districts
Population % Change from 2010 to 2020
Ethnicity: Not Latino American Indian and Alaska Native alone



OK Enid State House Districts
Population % Change from 2010 to 2020
Ethnicity: Not Latino African American alone

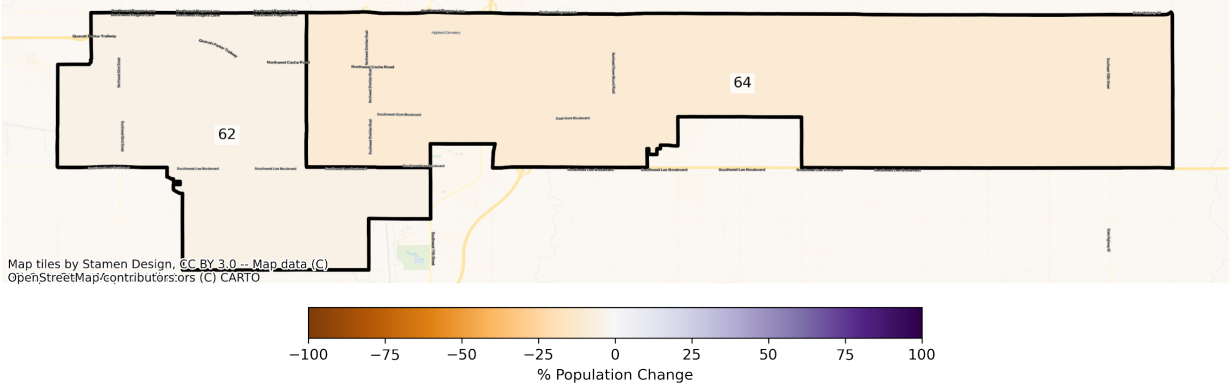


OK Enid State House Districts
Population % Change from 2010 to 2020
Ethnicity: Not Latino Asian alone

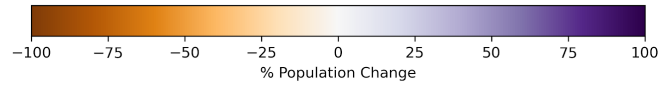
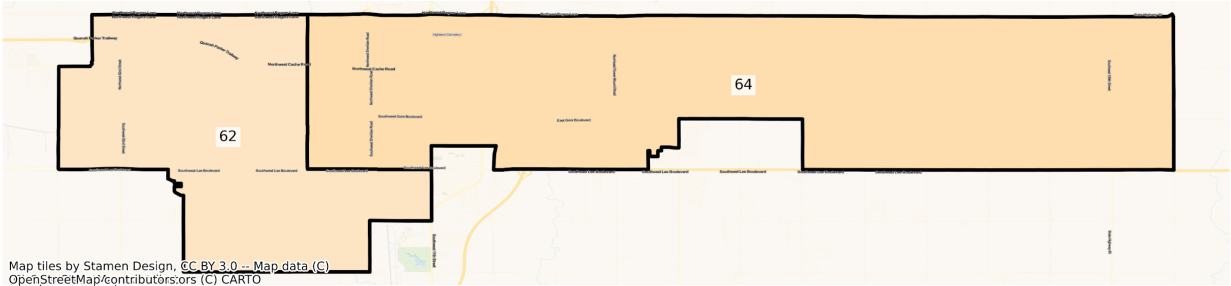


Lawton

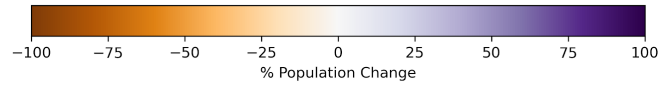
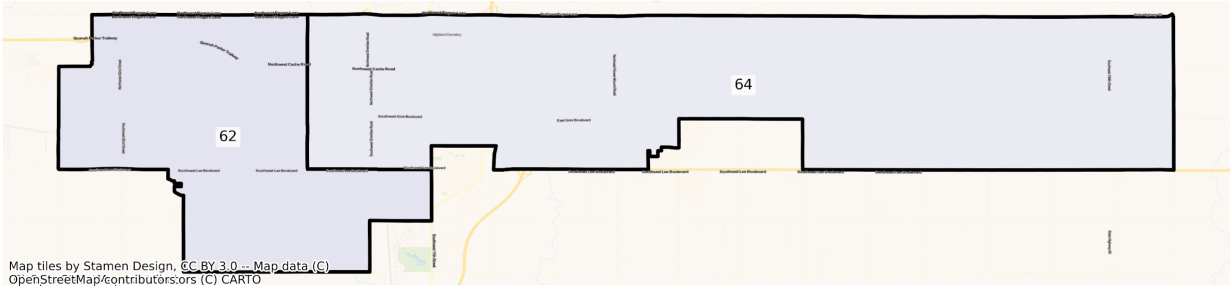
OK Lawton State House Districts
Population % Change from 2010 to 2020
Total Population



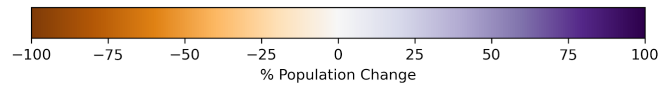
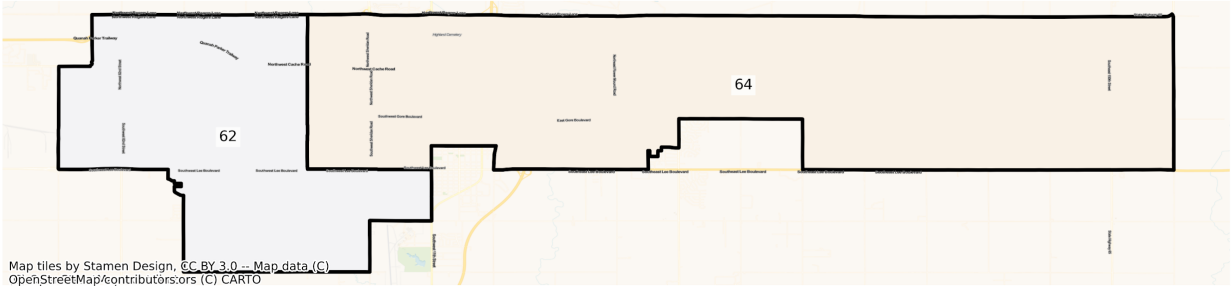
OK Lawton State House Districts
Population % Change from 2010 to 2020
Ethnicity: Not Latino White alone



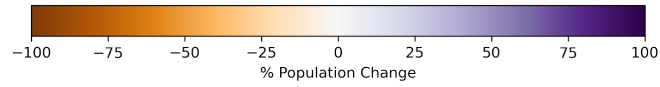
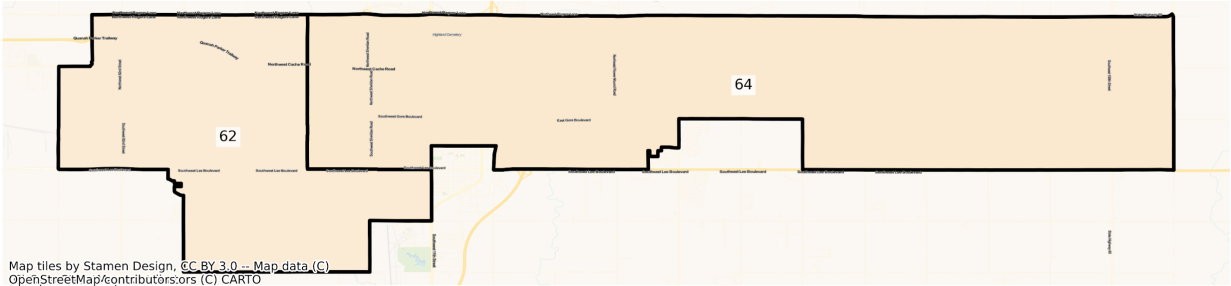
OK Lawton State House Districts
Population % Change from 2010 to 2020
Ethnicity: Hispanic or Latino



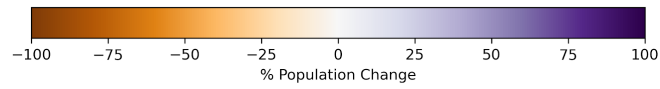
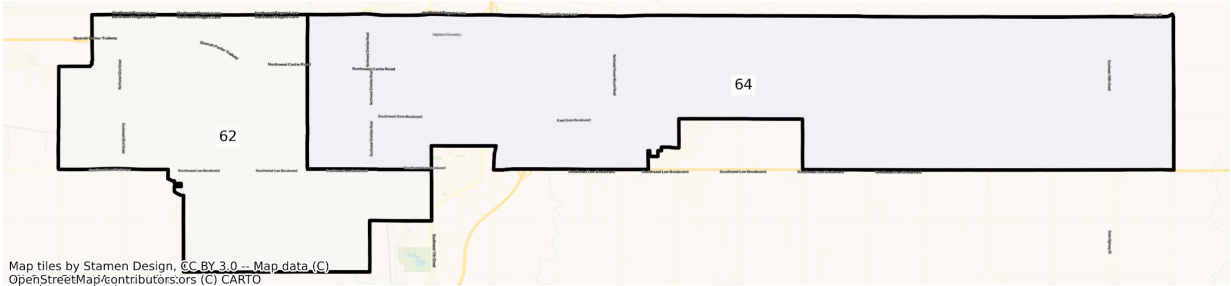
OK Lawton State House Districts
Population % Change from 2010 to 2020
Ethnicity: Not Latino American Indian and Alaska Native alone



OK Lawton State House Districts
Population % Change from 2010 to 2020
Ethnicity: Not Latino African American alone

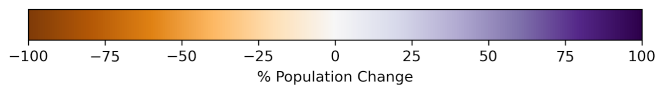
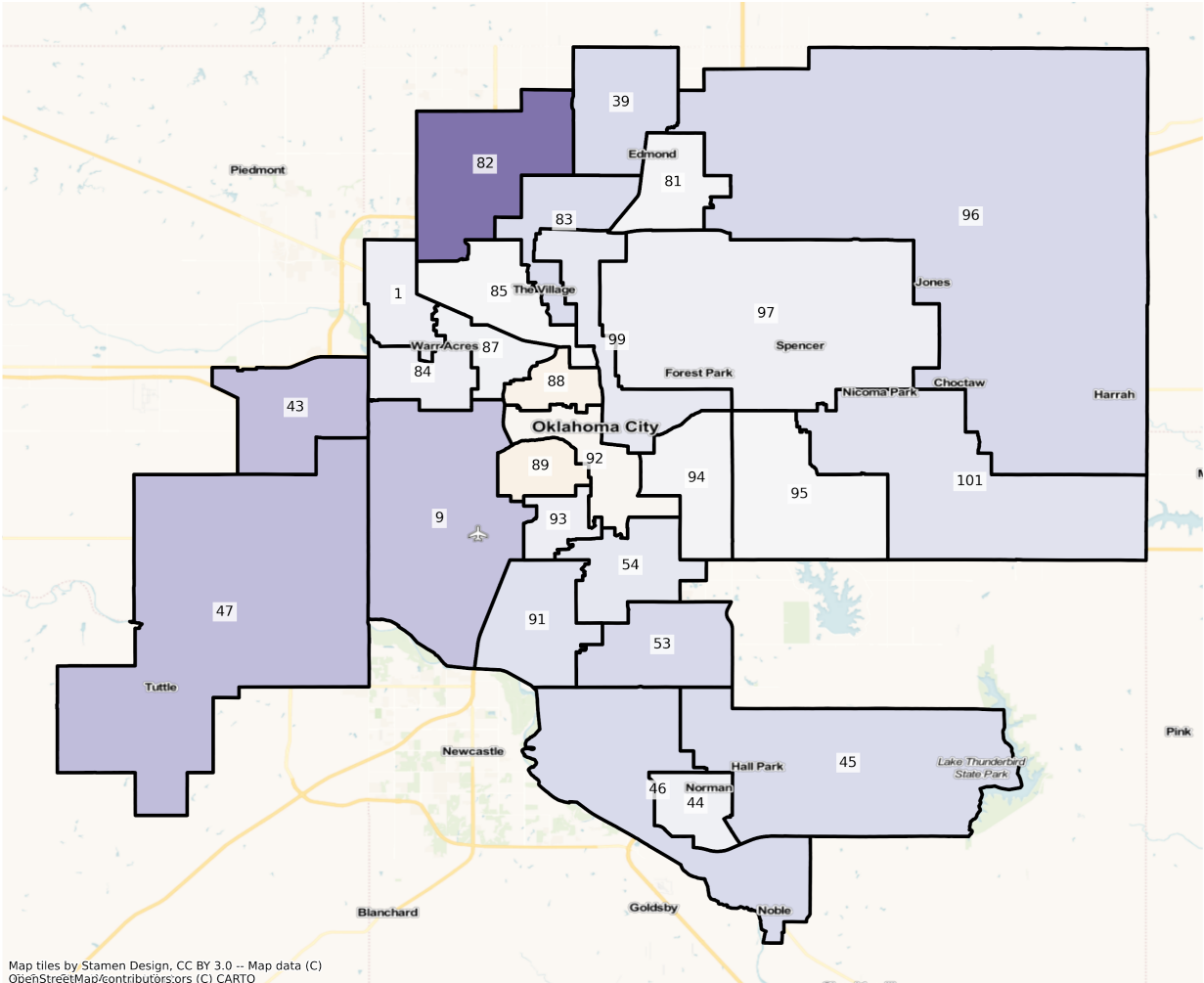


OK Lawton State House Districts
Population % Change from 2010 to 2020
Ethnicity: Not Latino Asian alone

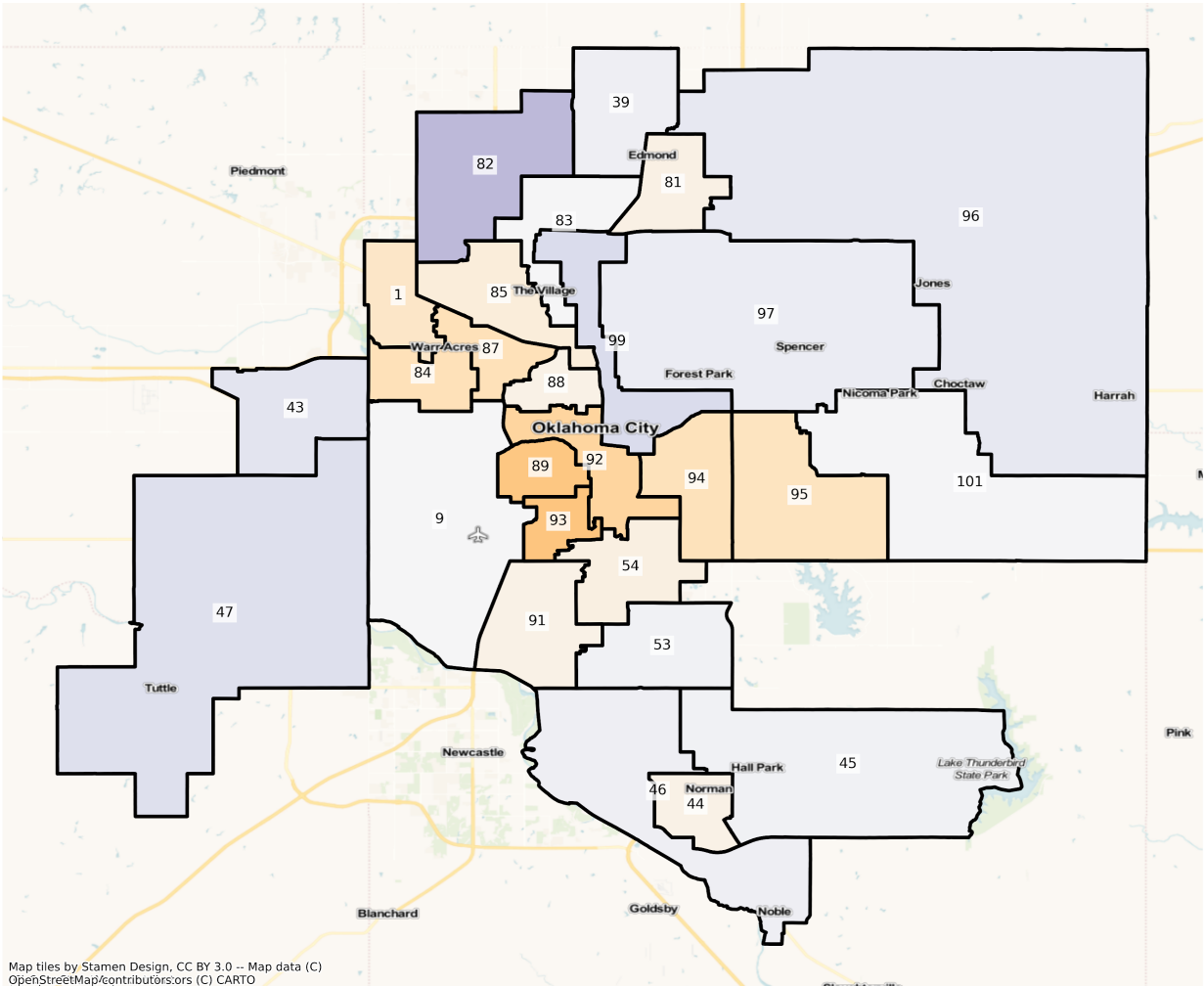


Oklahoma City

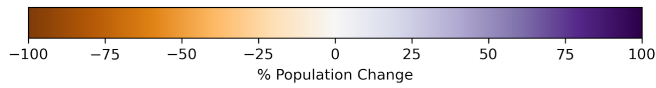
OK Oklahoma City State House Districts
Population % Change from 2010 to 2020
Total Population



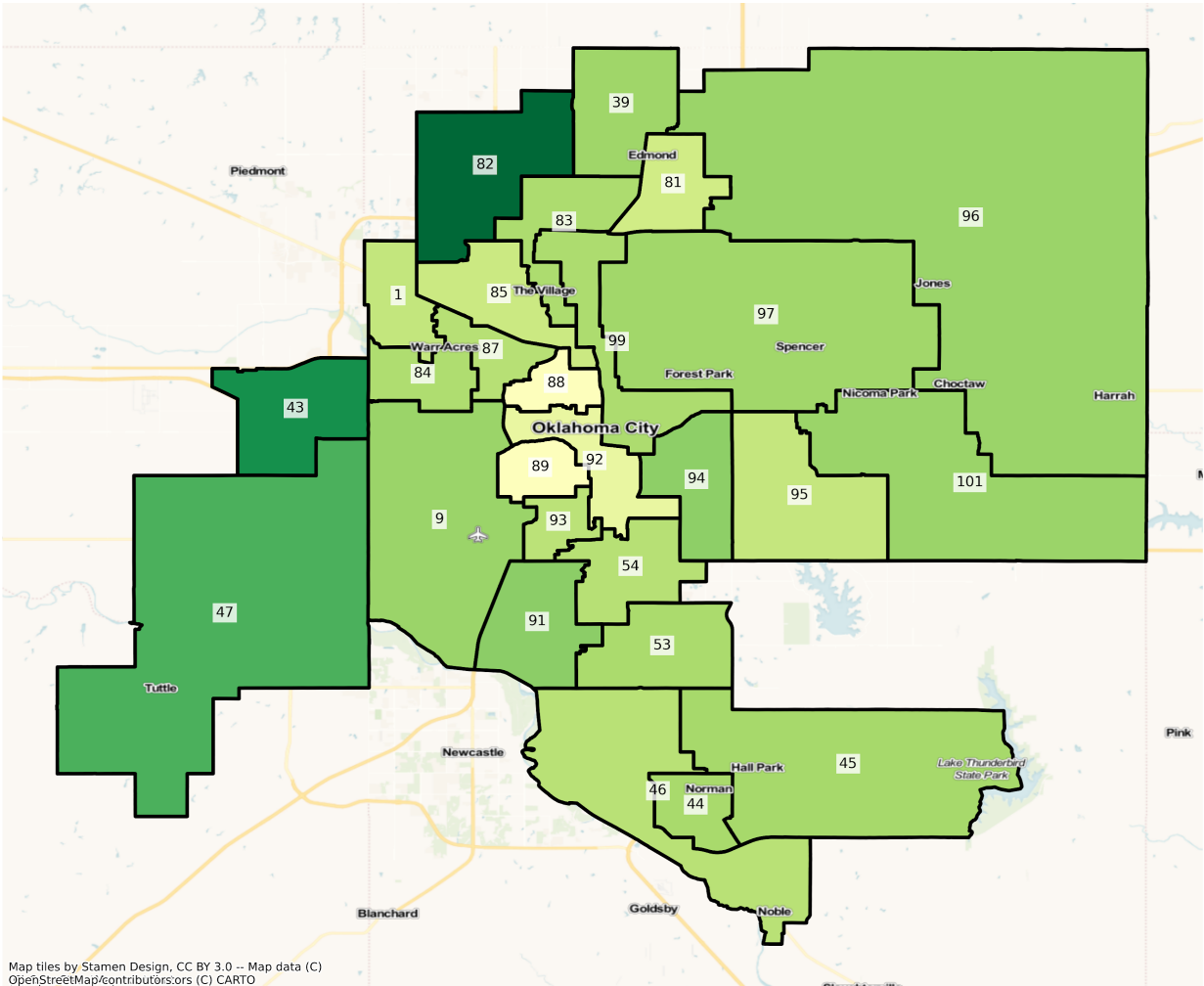
OK Oklahoma City State House Districts
 Population % Change from 2010 to 2020
 Ethnicity: Not Latino White alone



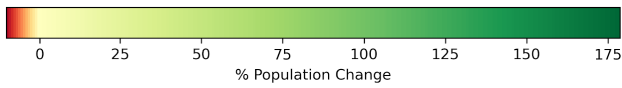
Map tiles by Stamen Design, CC BY 3.0 -- Map data (C)
 OpenStreetMap/contributors/ors (C) CARTO



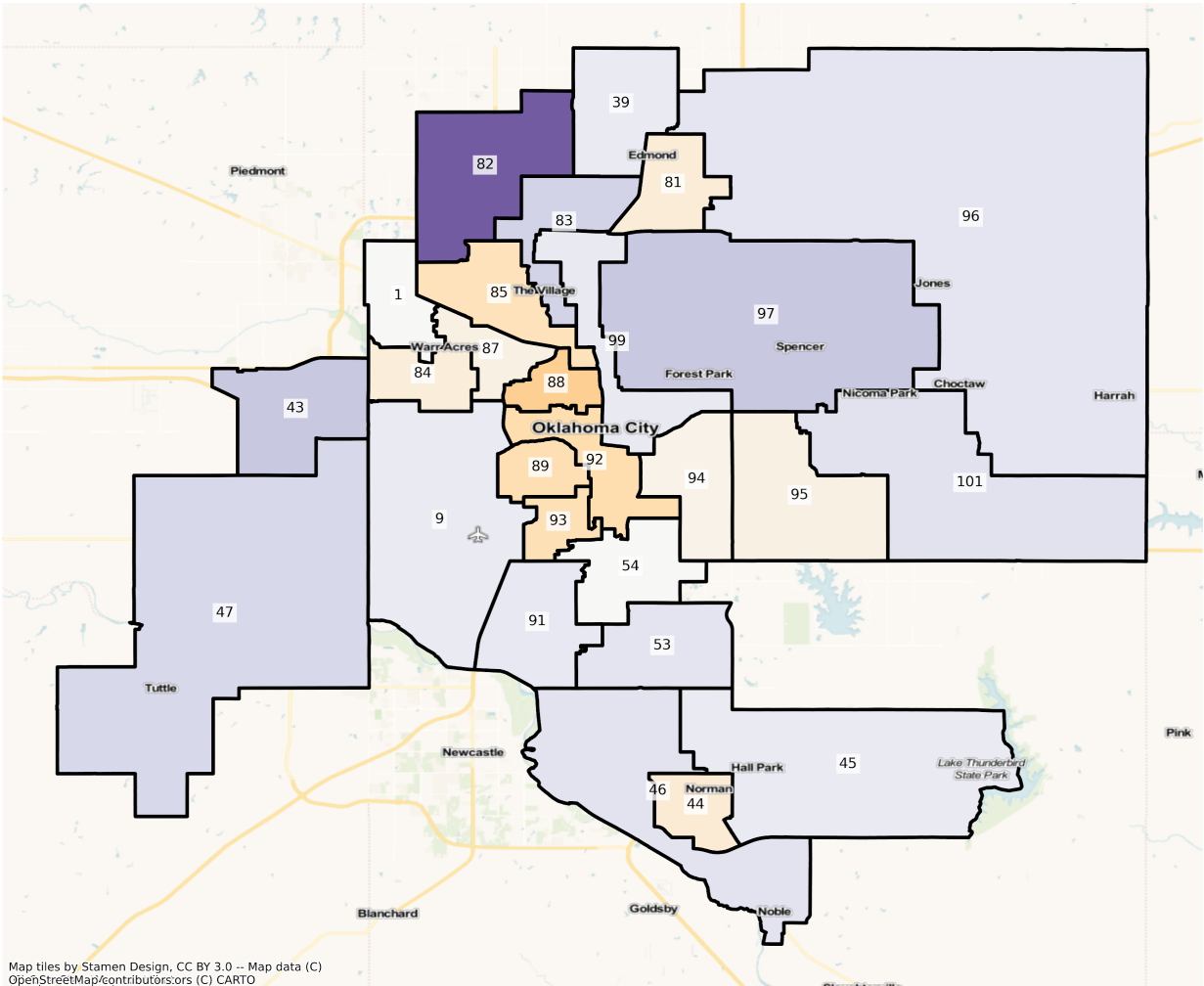
OK Oklahoma City State House Districts
 Population % Change from 2010 to 2020
 Ethnicity: Hispanic or Latino



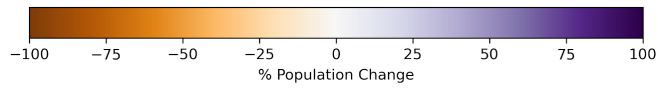
Map tiles by Stamen Design, CC BY 3.0 -- Map data (C) OpenStreetMap/contributors/ors (C) CARTO



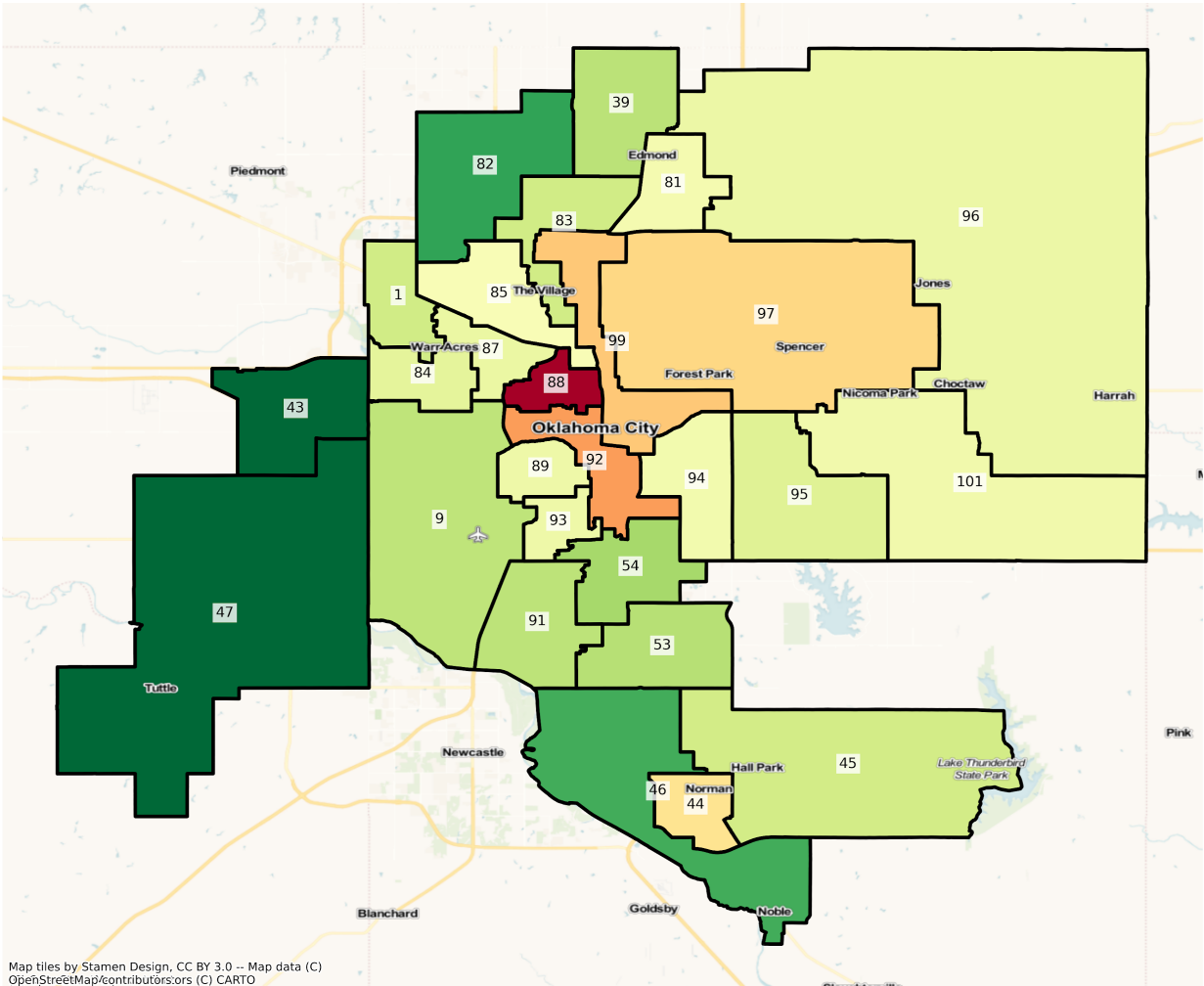
OK Oklahoma City State House Districts
 Population % Change from 2010 to 2020
 Ethnicity: Not Latino American Indian and Alaska Native alone



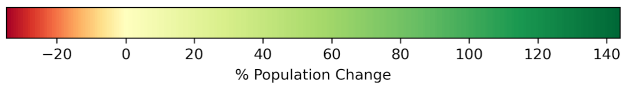
Map tiles by Stamen Design, CC BY 3.0 -- Map data (C) OpenStreetMap/contributors/ors (C) CARTO



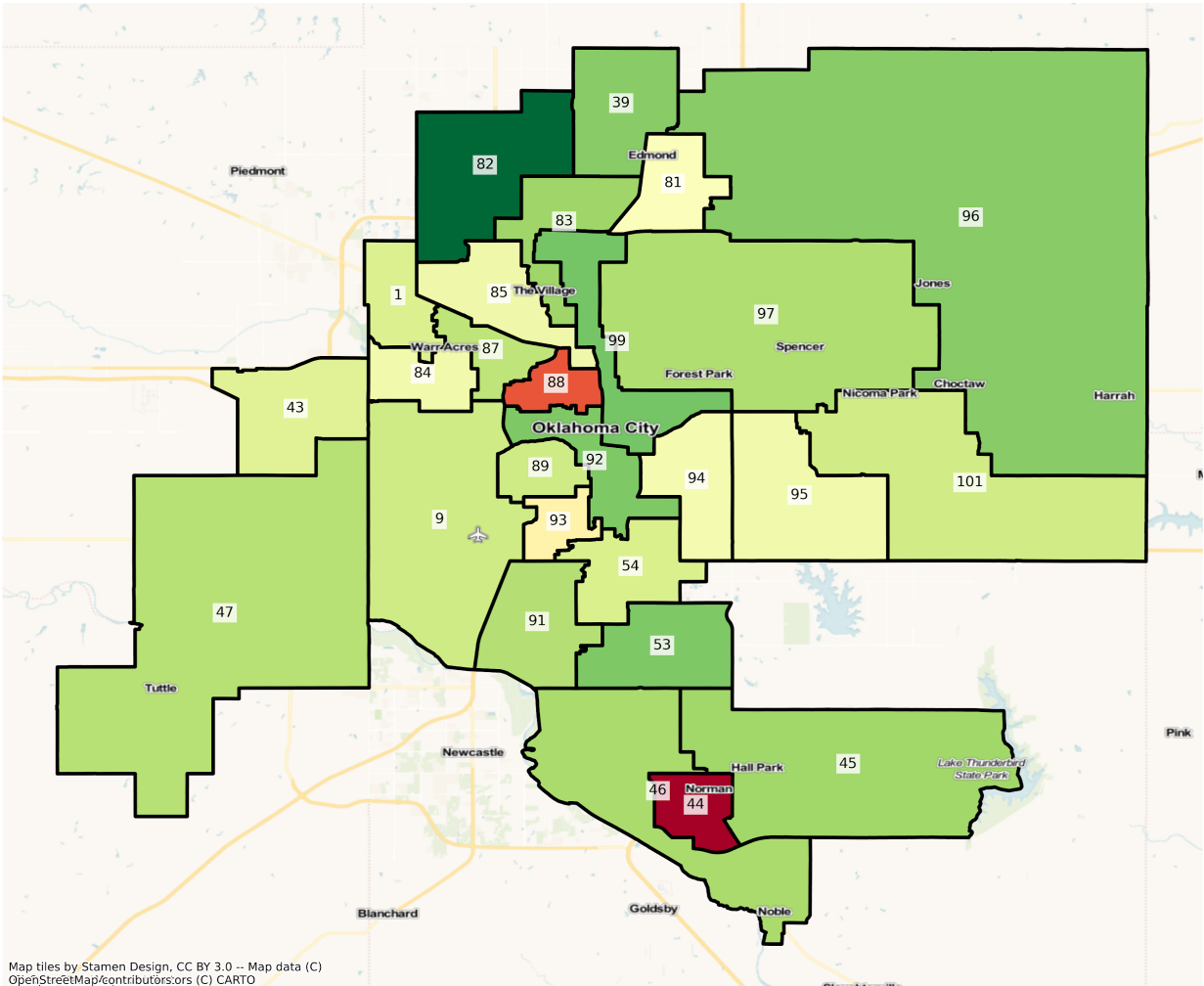
OK Oklahoma City State House Districts
 Population % Change from 2010 to 2020
 Ethnicity: Not Latino African American alone



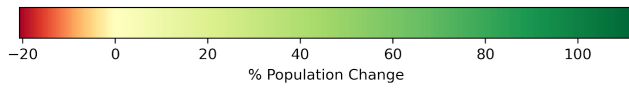
Map tiles by Stamen Design, CC BY 3.0 -- Map data (C)
 OpenStreetMap/contributors/ors (C) CARTO



OK Oklahoma City State House Districts
 Population % Change from 2010 to 2020
 Ethnicity: Not Latino Asian alone

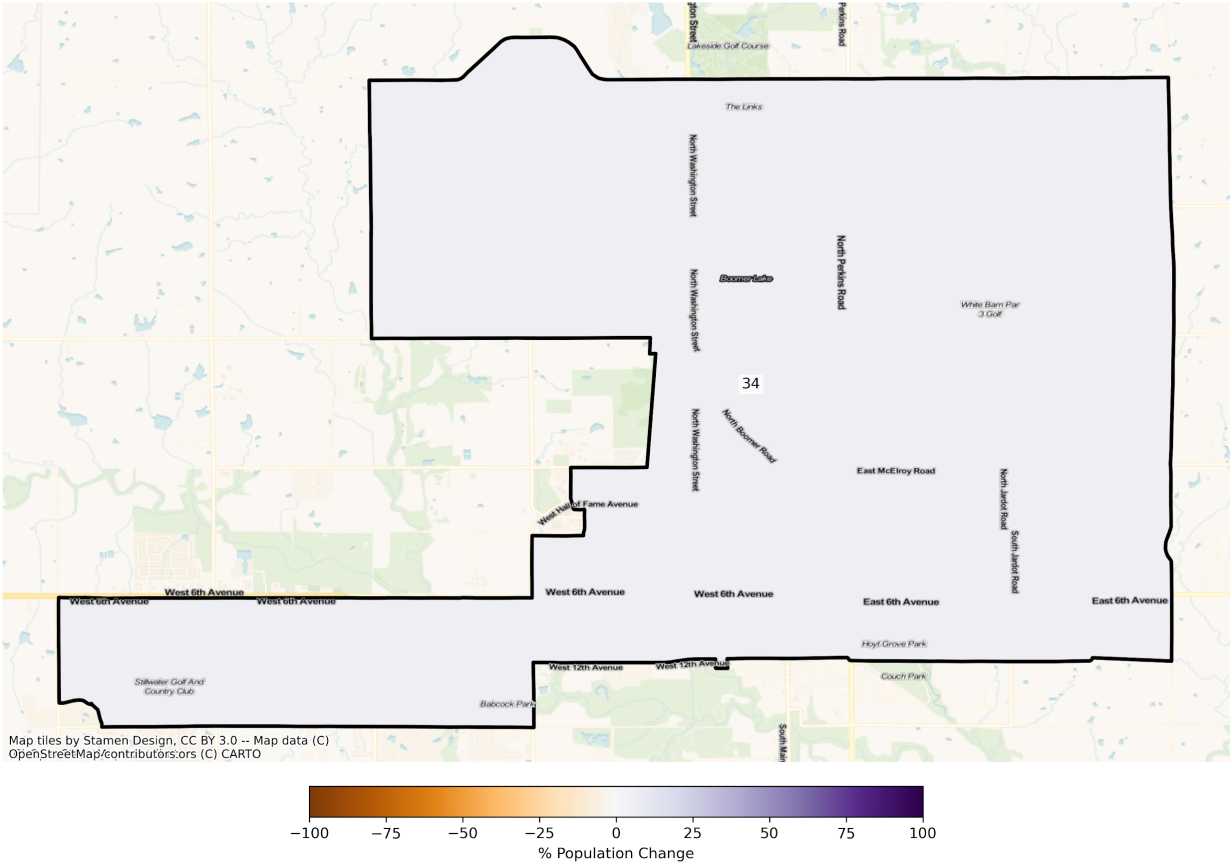


Map tiles by Stamen Design, CC BY 3.0 -- Map data (C) OpenStreetMap/contributors;ors (C) CARTO

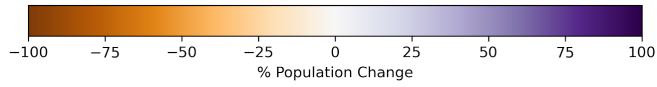
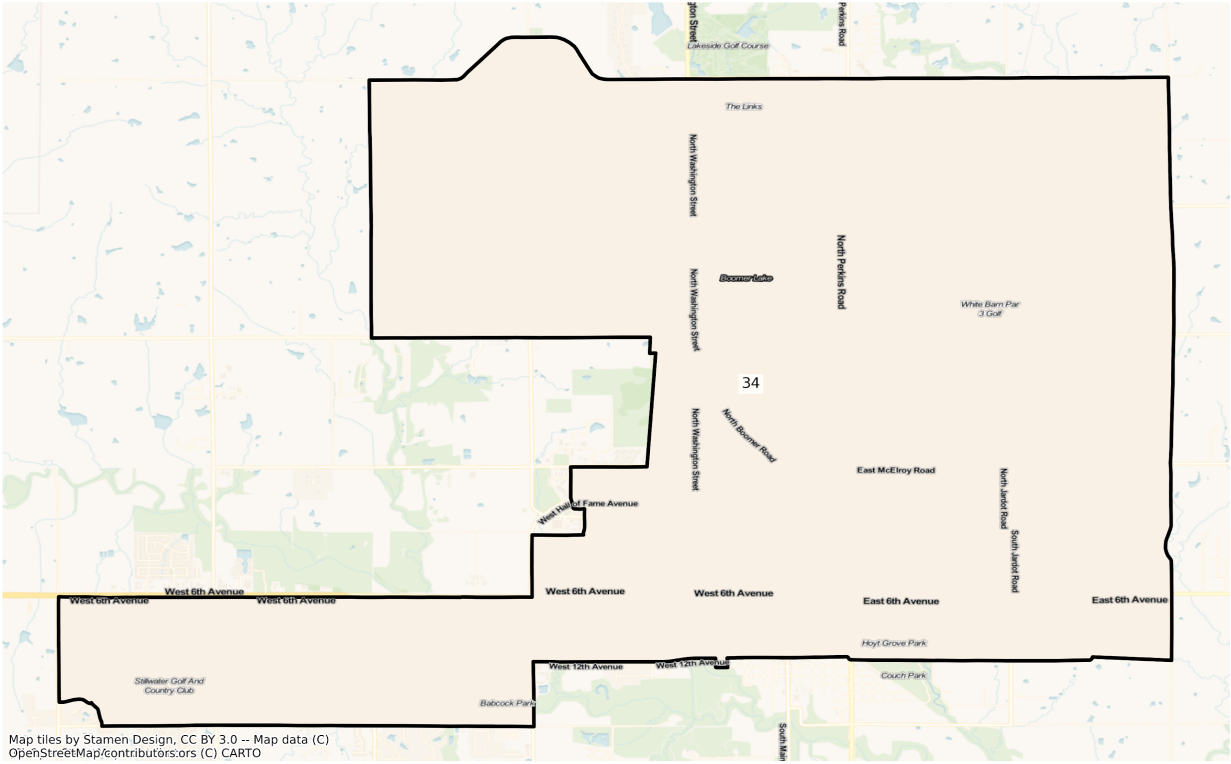


Stillwater

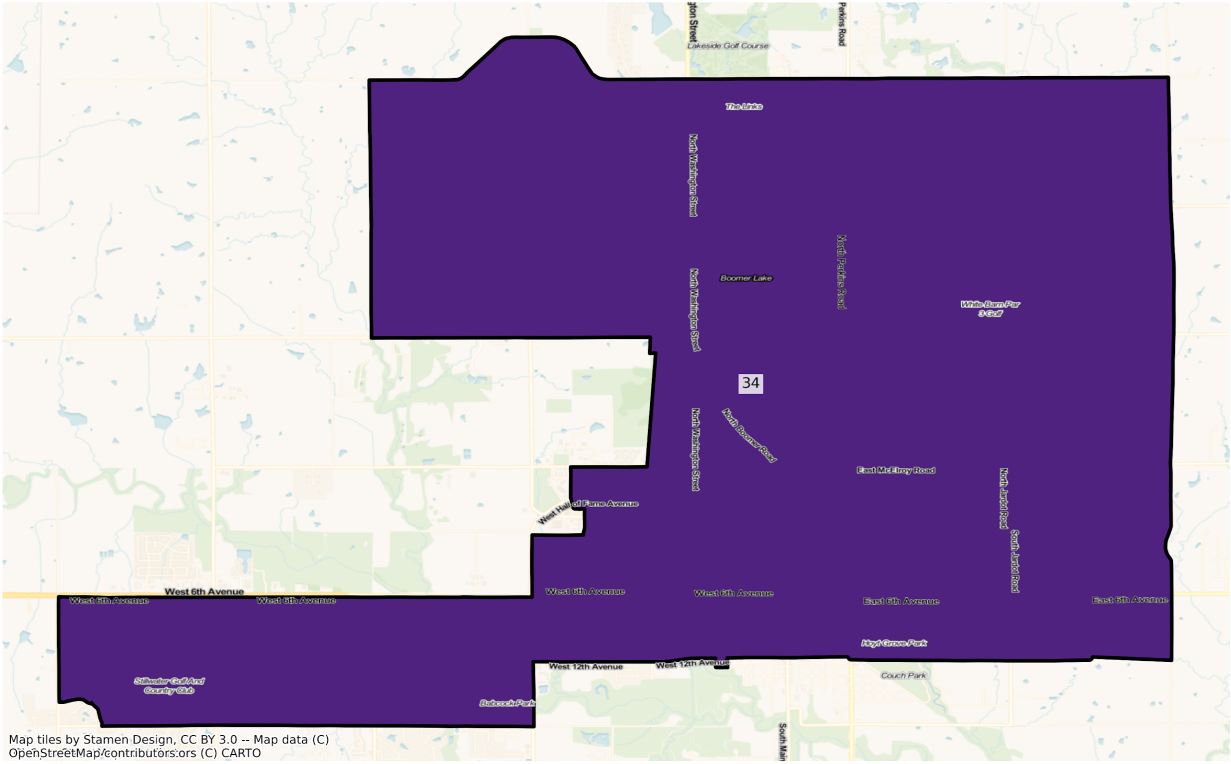
OK Stillwater State House Districts
Population % Change from 2010 to 2020
Total Population



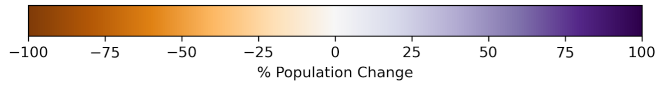
OK Stillwater State House Districts
Population % Change from 2010 to 2020
Ethnicity: Not Latino White alone



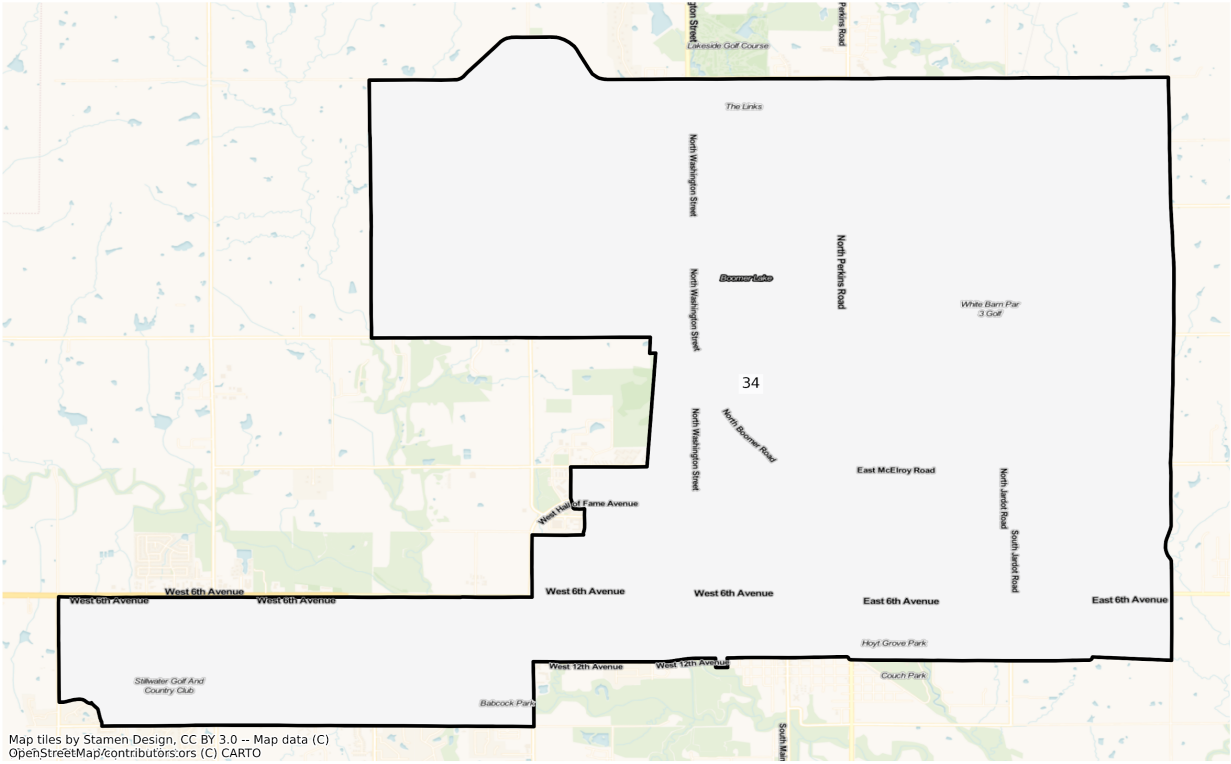
OK Stillwater State House Districts
Population % Change from 2010 to 2020
Ethnicity: Hispanic or Latino



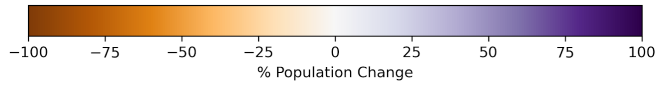
Map tiles by Stamen Design, CC BY 3.0 -- Map data (C) OpenStreetMap/contributors,ors (C) CARTO



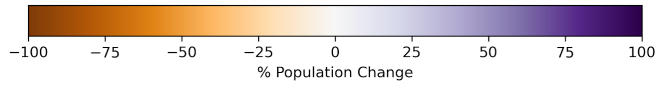
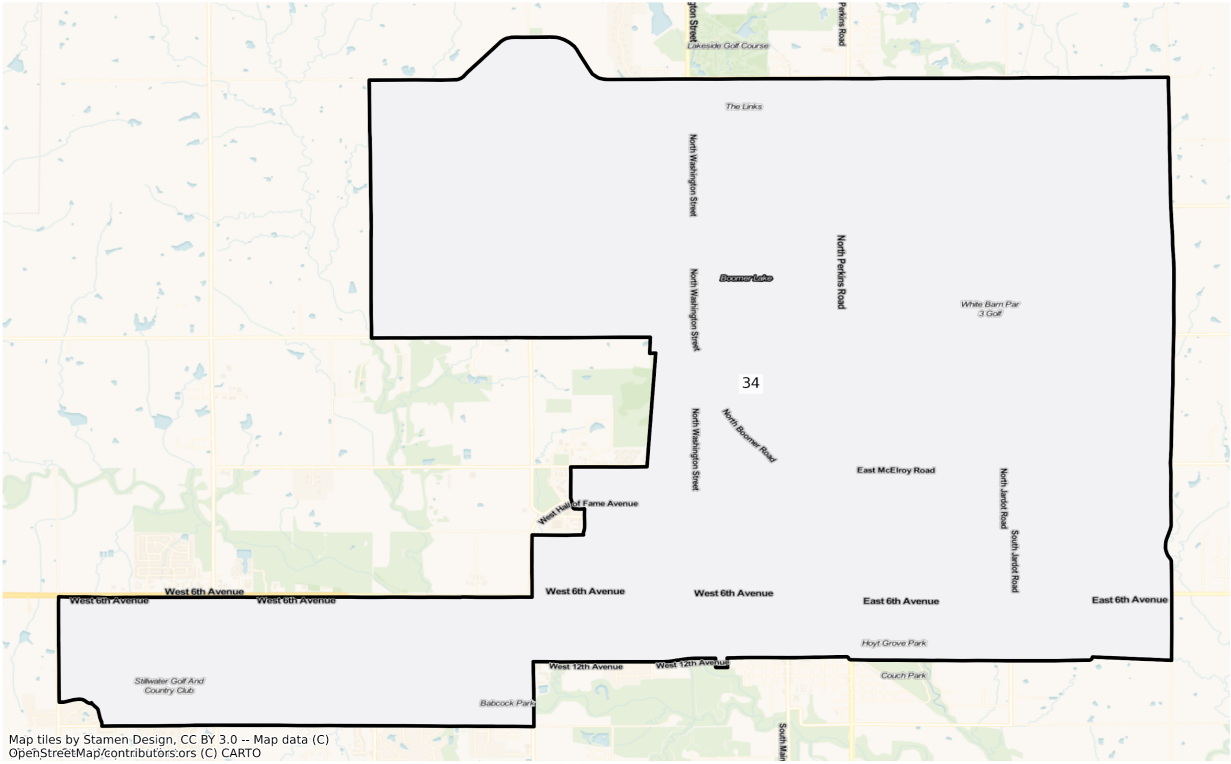
OK Stillwater State House Districts
 Population % Change from 2010 to 2020
 Ethnicity: Not Latino American Indian and Alaska Native alone



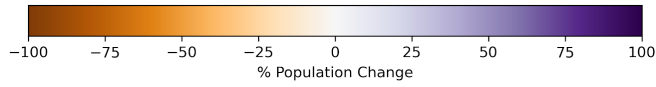
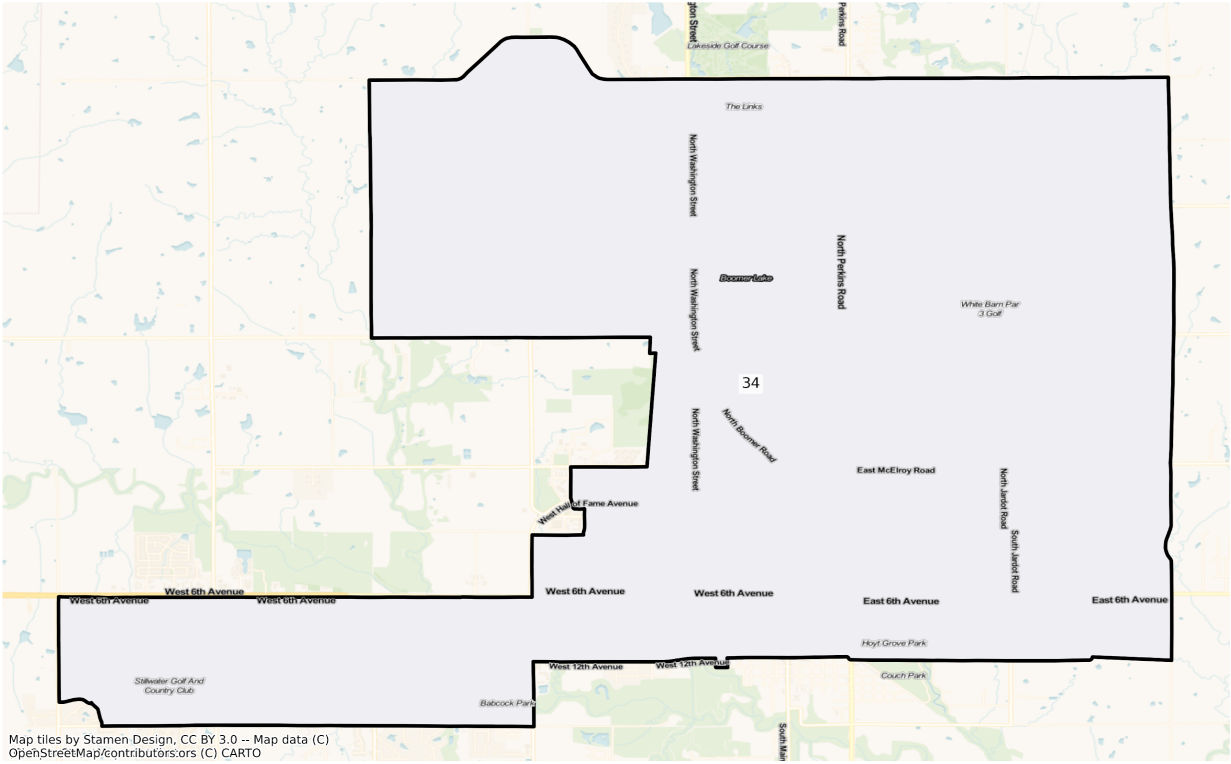
Map tiles by Stamen Design, CC BY 3.0 -- Map data (C) OpenStreetMap/contributors,ors (C) CARTO



OK Stillwater State House Districts
 Population % Change from 2010 to 2020
 Ethnicity: Not Latino African American alone

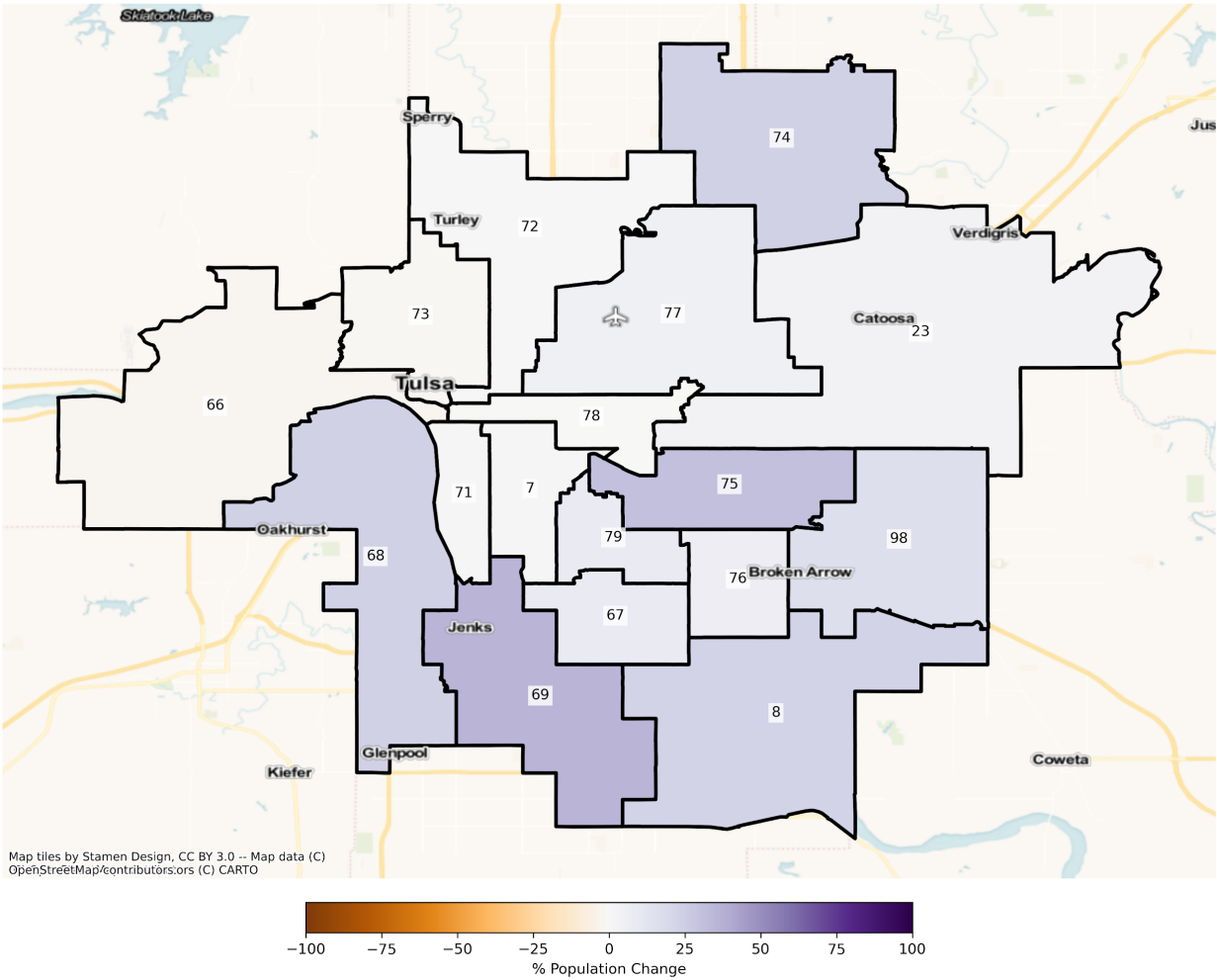


OK Stillwater State House Districts
Population % Change from 2010 to 2020
Ethnicity: Not Latino Asian alone

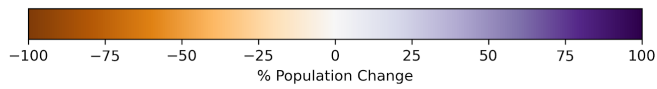
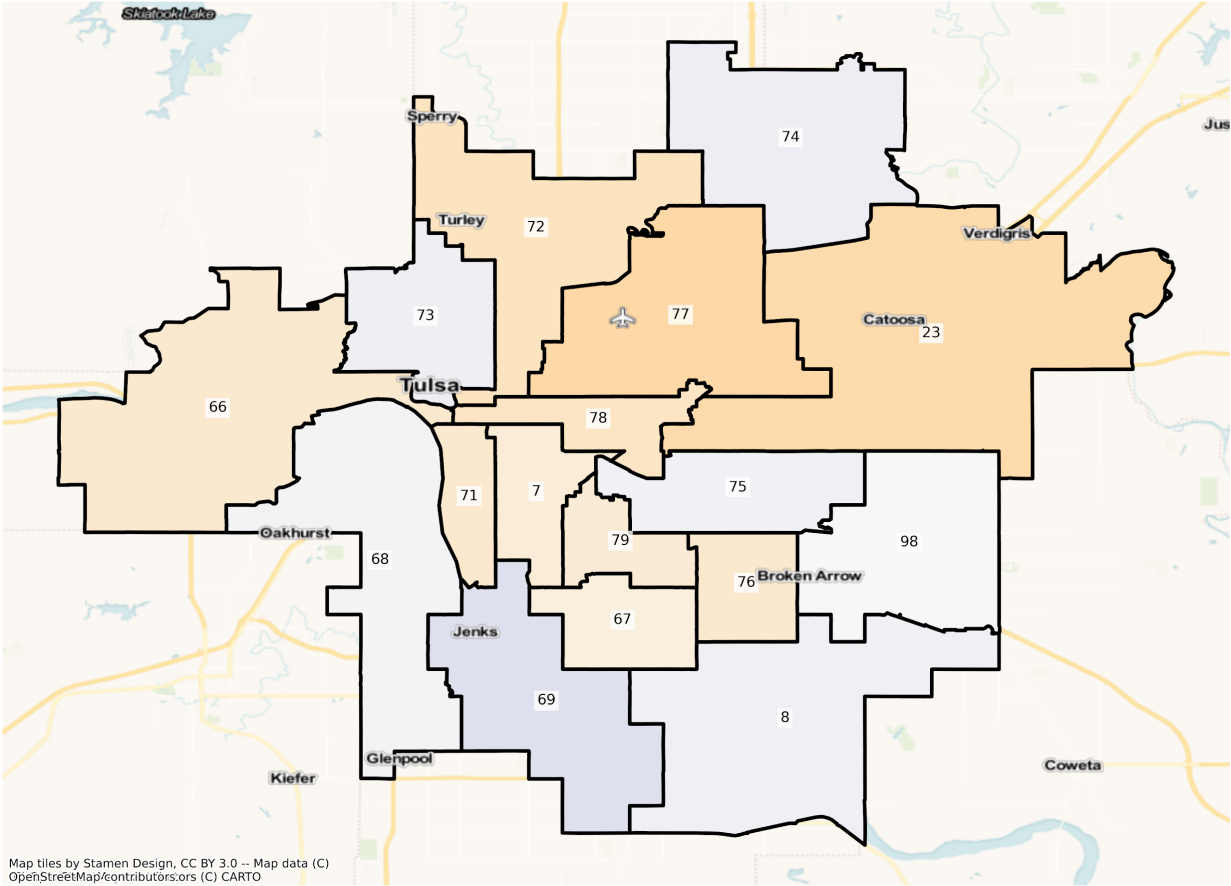


Tulsa

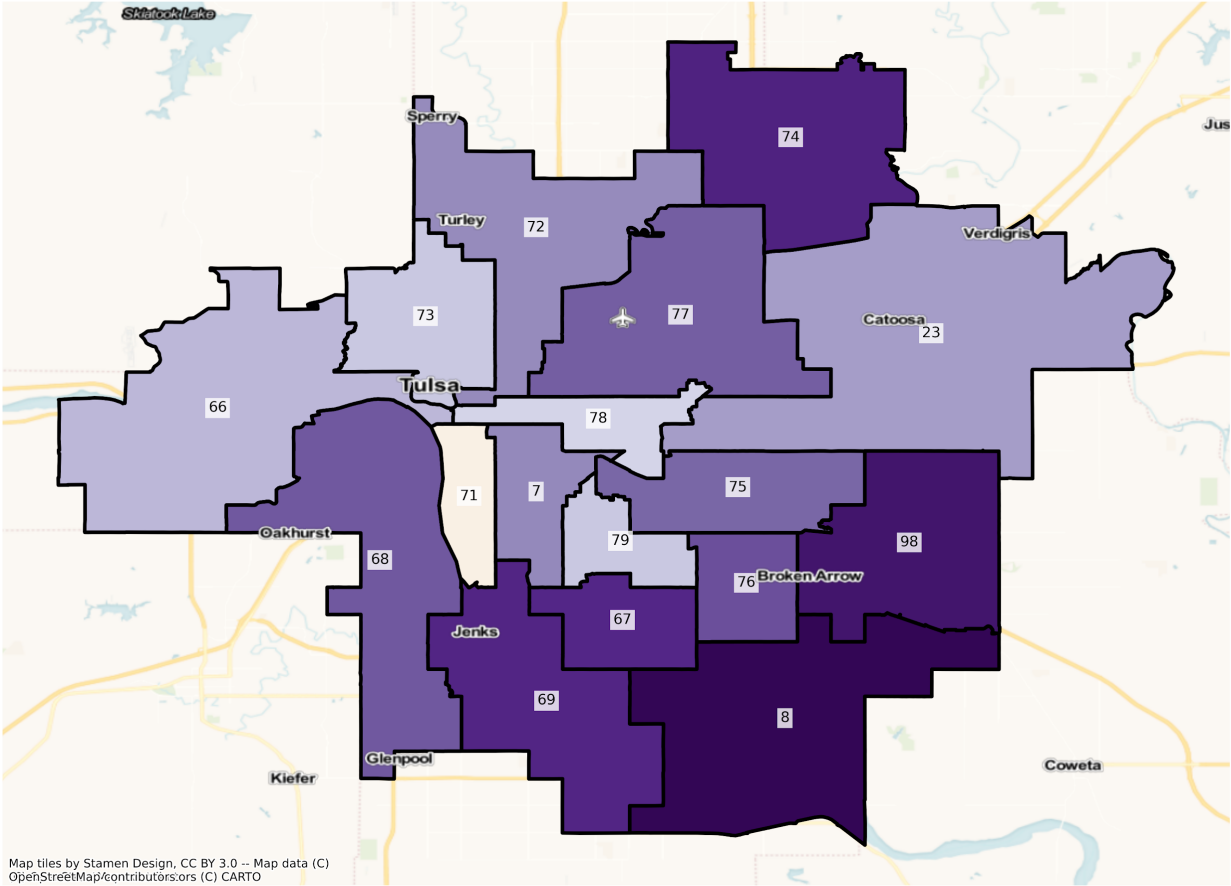
OK Tulsa State House Districts
Population % Change from 2010 to 2020
Total Population



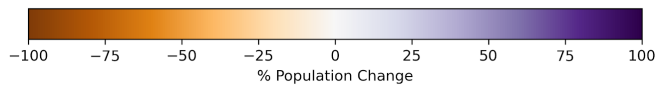
OK Tulsa State House Districts
Population % Change from 2010 to 2020
Ethnicity: Not Latino White alone



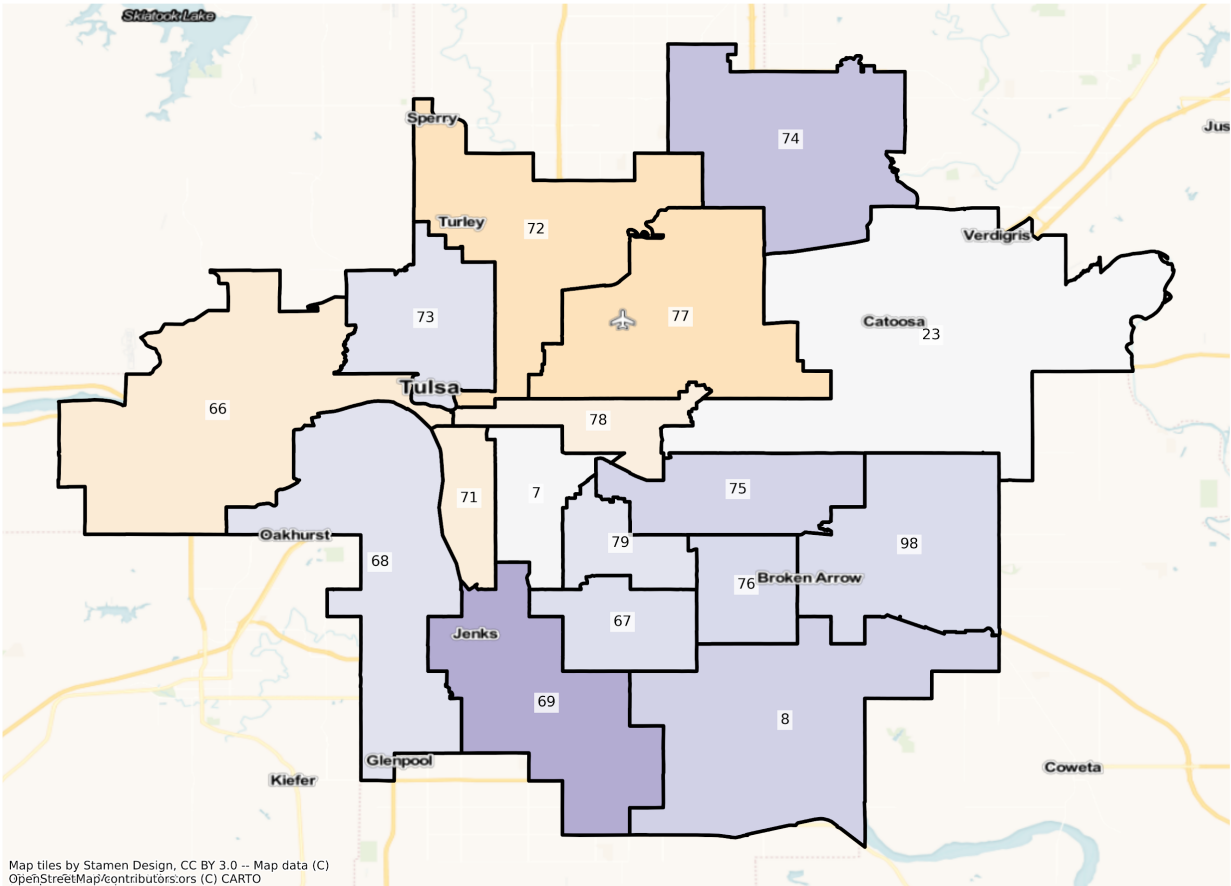
OK Tulsa State House Districts
Population % Change from 2010 to 2020
Ethnicity: Hispanic or Latino



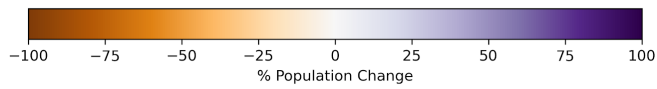
Map tiles by Stamen Design, CC BY 3.0 -- Map data (C) OpenStreetMap/contributors:ors (C) CARTO



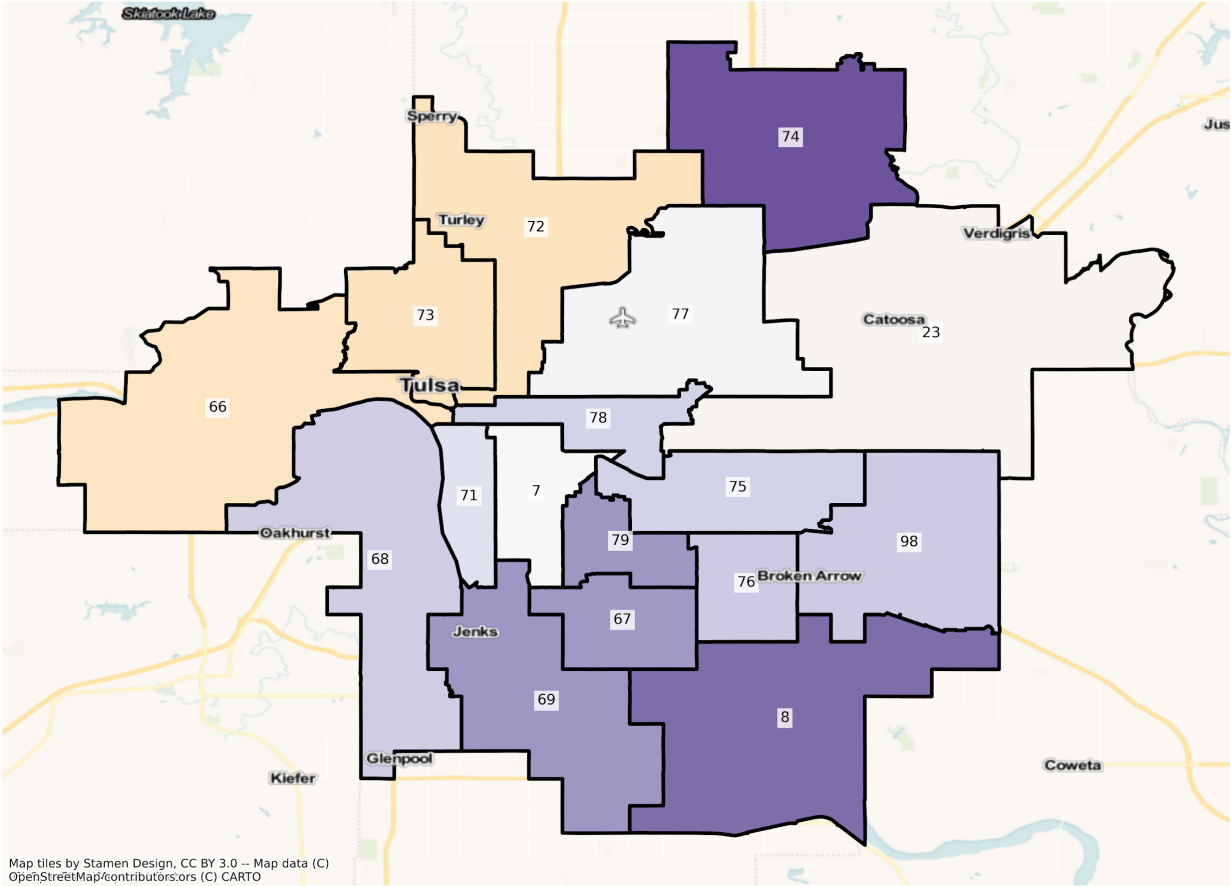
OK Tulsa State House Districts
Population % Change from 2010 to 2020
Ethnicity: Not Latino American Indian and Alaska Native alone



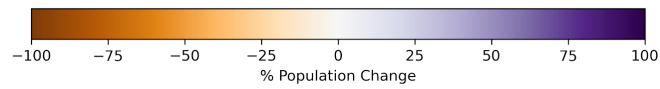
Map tiles by Stamen Design, CC BY 3.0 -- Map data (C) OpenStreetMap/contributors,ors (C) CARTO



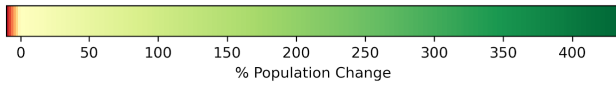
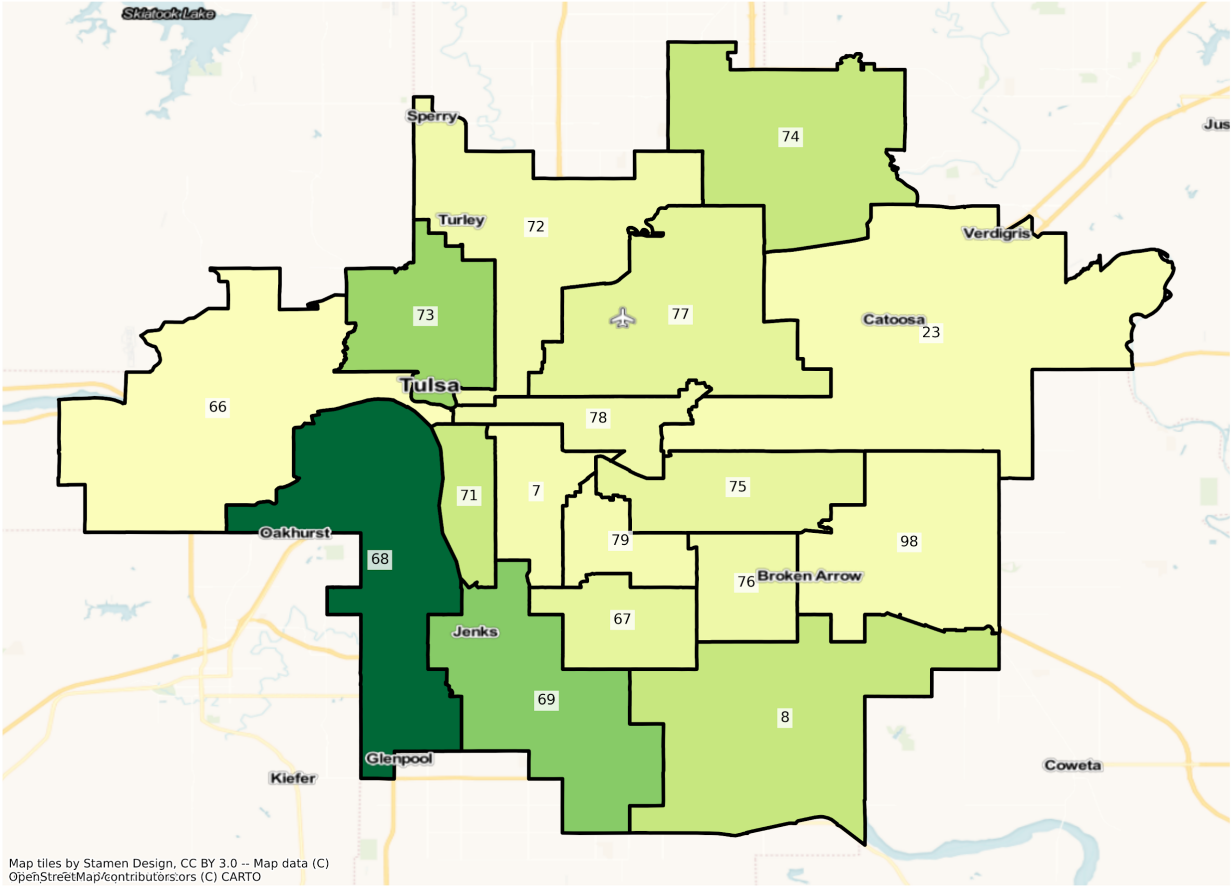
OK Tulsa State House Districts
Population % Change from 2010 to 2020
Ethnicity: Not Latino African American alone



Map tiles by Stamen Design, CC BY 3.0 -- Map data (C) OpenStreetMap/contributors:ors (C) CARTO



OK Tulsa State House Districts
Population % Change from 2010 to 2020
Ethnicity: Not Latino Asian alone



2010 Population by Race and Ethnicity at the State House District Level

DISTRICT	Total Population	Hispanic or Latino Origin	White Alone, not Latino	African American Alone, not Latino	AIAN Alone, not Latino ¹	Asian Alone, not Latino	NHPI Alone, not Latino ²	Other Alone, not Latino	Two or More, not Latino
1	36866	1655	24373	3058	5564	118	3	17	2078
2	37165	1364	24245	668	7340	177	8	14	3349
3	36932	3042	27324	770	3708	165	13	10	1900
4	37367	2632	18453	523	12309	225	9	9	3207
5	37394	983	24628	88	8395	364	10	8	2918
6	37150	859	25394	505	6770	344	27	10	3241
7	37149	1620	25641	242	6574	180	297	34	2561
8	37199	1148	26080	153	6502	229	20	13	3054
9	37325	1468	27044	447	5165	240	22	28	2911
10	37164	1569	26907	770	5131	208	8	10	2561
11	37227	1652	28685	740	3422	624	12	29	2063
12	37017	1276	26411	1675	4545	184	16	27	2883
13	37108	1219	20609	6177	5995	218	15	12	2863
14	36975	2567	22676	1626	7317	193	11	9	2576
15	36900	930	26872	322	6065	188	12	9	2502
16	37019	1042	23930	3392	5530	150	5	29	2941
17	37026	1171	25988	531	6410	139	10	9	2768
18	36876	1360	26065	1280	5512	121	14	13	2511
19	37291	1024	25962	1997	5990	71	5	8	2234
20	37164	2139	29796	934	2345	169	16	7	1758
21	37281	1951	27382	621	4641	210	10	15	2451
22	37269	1465	27685	838	4784	135	13	16	2333
23	37458	8314	19599	3845	2544	948	6	30	2172
24	36998	1277	24396	2407	6400	67	22	11	2418
25	37492	1523	25973	879	6331	244	17	12	2513
26	37114	1761	26725	1337	4884	273	21	32	2081
27	37085	1442	29340	565	3471	230	31	29	1977

28	37151	1356	26062	1480	5775	106	21	31	2320
29	37203	1015	29140	848	3671	89	8	10	2422
30	36909	1529	27947	921	3932	183	39	25	2333
31	36831	1971	30391	1879	1115	217	14	23	1221
32	36964	909	29771	2293	2231	77	14	10	1659
33	37190	1323	30371	1036	1905	711	12	20	1812
34	37140	1586	28639	1747	1464	1937	20	48	1699
35	37019	829	30659	336	3101	116	18	26	1934
36	37022	1092	26239	1041	5859	217	5	11	2558
37	37314	2175	28138	861	4151	201	9	3	1776
38	36887	1729	30746	445	2450	124	11	26	1356
39	37474	1979	29875	2356	908	886	38	31	1401
40	37301	4247	28456	1336	795	300	982	44	1141
41	37217	1754	31575	1140	914	625	108	18	1083
42	36927	2648	29553	497	2452	114	5	11	1647
43	37356	2290	30355	668	1271	1465	23	34	1250
44	37284	2535	27767	1691	1694	1686	24	39	1848
45	37028	2271	27879	2039	1723	1130	20	63	1903
46	37080	2273	29180	928	1562	1411	27	43	1656
47	37437	2037	30599	467	1516	1516	21	27	1254
48	37161	2214	26225	3009	2993	472	8	19	2221
49	37210	3699	27738	591	3247	115	1	3	1816
50	37451	2870	30063	840	1876	203	11	9	1579
51	36972	1489	31773	221	1900	110	13	10	1456
52	37445	7076	25575	2657	654	325	59	41	1058
53	37134	2923	28201	1640	1451	964	20	38	1897
54	37220	3994	26737	1823	1590	973	28	21	2054
55	37205	3809	30064	1101	1151	206	6	24	844
56	36871	2485	25189	1459	5753	136	16	24	1809
57	37365	4637	28199	911	2289	312	7	23	987
58	36998	2946	31343	831	894	212	15	25	732

59	37154	5706	27927	989	1567	139	5	8	813
60	36907	3966	27029	1247	2896	320	18	24	1407
61	36937	11221	24133	344	353	346	10	43	487
62	37363	4448	19308	8622	1362	1254	214	59	2096
63	37246	4527	23652	4185	2883	390	140	39	1430
64	37200	4659	21044	6571	1847	763	167	46	2103
65	37104	2779	27511	2161	2733	307	136	20	1457
66	37086	1776	28160	1581	3345	195	9	28	1992
67	36954	1640	29882	1342	1254	1485	11	34	1306
68	36870	2331	26176	2443	3071	491	15	32	2311
69	37176	2442	29067	1464	1789	896	13	42	1463
70	36930	1592	29126	2258	1645	565	24	40	1680
71	37390	3869	23514	5143	1922	985	17	49	1891
72	37277	6922	16063	8981	2529	403	93	48	2238
73	36920	3883	7361	22587	1142	89	28	39	1791
74	37228	2019	29335	888	2374	630	39	30	1913
75	37310	9038	18956	4240	1537	1760	16	51	1712
76	37161	2688	27145	2013	1533	2076	12	39	1655
77	36860	8442	19632	3462	2763	347	33	39	2142
78	36825	5111	24612	2581	2013	566	21	34	1887
79	37241	4367	24717	3491	1416	1556	29	56	1609
80	36924	1680	30078	910	2043	474	13	24	1702
81	36974	1880	28686	2606	966	1359	51	46	1380
82	37210	1533	28580	2828	662	2190	20	31	1366
83	37256	1972	26044	5228	714	1808	27	48	1415
84	37216	7378	22385	3936	1080	761	46	39	1591
85	37120	1998	27836	3685	965	1154	19	47	1416
86	37134	1681	17251	92	14170	296	23	14	3607
87	37059	5575	23190	4076	1081	1478	24	51	1584
88	37191	7648	20012	4023	1379	2500	45	52	1532
89	37125	24122	9007	1529	1371	150	14	62	870

90	37173	8881	20077	3834	1544	1223	24	35	1555
91	37169	2873	26506	1738	1201	3337	21	34	1459
92	37379	15011	14327	4633	1773	402	18	50	1165
93	37243	13056	17646	2690	1746	650	31	35	1389
94	37289	2906	20569	8925	1317	1029	74	46	2423
95	36818	2479	24294	5549	1385	909	66	50	2086
96	37254	1404	31131	1010	1518	537	23	42	1589
97	37119	1626	11652	20825	762	329	19	45	1861
98	36870	2608	27542	1494	2169	1070	17	32	1938
99	37417	3234	9864	20810	667	770	23	64	1985
100	37460	3287	24177	5417	887	2125	41	46	1480
101	37009	1599	27528	4158	1428	487	32	31	1746

¹American Indian and Alaska Native Alone, not Latino

²Native Hawaiian and Pacific Islander Alone, not Latino

2020 Population by Race and Ethnicity at the State House District Level

DISTRICT	Total Population	Hispanic or Latino Origin	White Alone, not Latino	African American Alone, not Latino	AIAN Alone, not Latino ¹	Asian Alone, not Latino	NHPI Alone, not Latino ²	Other Alone, not Latino	Two or More, not Latino
1	34467	1996	20484	2721	5056	133	462	43	3572
2	34473	1617	19708	541	7670	262	10	97	4568
3	35800	3181	23834	597	4459	221	26	35	3447
4	37420	3078	15558	470	12576	269	14	117	5338
5	35570	1296	22029	115	7548	334	20	61	4167
6	36653	1192	22947	445	6752	355	16	74	4872
7	35393	1875	22605	301	6198	166	240	58	3950
8	37041	1464	23098	201	6577	354	19	47	5281
9	40866	2382	26246	587	5351	453	17	178	5652
10	35825	1965	23369	651	4723	304	11	49	4753
11	40629	2469	27450	917	3670	1127	7	129	4860
12	37717	1676	24882	1253	4753	292	11	110	4740

13	34922	1671	18185	4852	5882	279	18	87	3948
14	35368	2964	18885	1616	6975	261	21	96	4550
15	33691	1113	22667	293	6044	119	17	72	3366
16	34743	1578	20366	2647	5436	163	31	95	4427
17	34114	1412	21793	429	6393	225	20	55	3787
18	34381	1693	22002	1104	5498	185	29	98	3772
19	35105	1401	22244	1744	5969	91	9	103	3544
20	41569	3371	30579	919	2747	189	21	88	3655
21	41134	3204	26693	694	5728	279	11	65	4460
22	36798	2094	24588	797	5268	156	26	126	3743
23	38672	12049	15294	3772	2548	1135	116	122	3636
24	34594	1600	20922	1971	6484	106	11	76	3424
25	38065	2208	22703	861	6842	372	13	98	4968
26	38802	2643	25184	1540	4976	355	21	75	4008
27	39911	2262	28927	725	3416	304	23	122	4132
28	36569	1938	23245	1258	5903	147	13	120	3945
29	37632	1549	27261	706	3671	117	19	65	4244
30	40961	2431	27430	996	4351	782	42	87	4842
31	46306	3871	34739	1815	1344	382	26	239	3890
32	35882	1224	26947	1857	2389	133	16	87	3229
33	38660	2239	28990	1328	1960	556	24	137	3426
34	39366	2896	27183	1805	1486	2045	30	156	3765
35	35343	1253	27130	285	3126	171	11	86	3281
36	40350	1749	26661	1047	5765	398	10	84	4636
37	35129	2803	23641	815	3910	206	268	56	3430
38	34690	1991	27177	381	2391	132	36	71	2511
39	44899	3446	31691	3440	986	1371	56	125	3784
40	38297	6932	23911	1219	845	392	2237	97	2664
41	55489	4598	40722	2262	1395	1422	687	164	4239
42	37928	3729	27505	484	2636	172	34	74	3294
43	49299	5680	34215	1629	1624	1733	41	184	4193

44	39119	4277	26252	1587	1510	1337	20	961	3175
45	44180	3881	29020	2688	1863	1653	36	154	4885
46	44559	3577	30830	1852	1777	2012	36	164	4311
47	49524	4473	35395	1134	1825	2075	57	171	4394
48	36262	3087	22831	2669	3035	460	40	488	3652
49	38636	4902	25986	556	3352	246	9	318	3267
50	34836	3418	25566	773	1646	225	17	121	3070
51	38363	2103	30337	271	2015	154	14	84	3385
52	34381	7533	21517	2193	649	340	77	68	2004
53	44948	4896	29445	2426	1641	1524	29	203	4784
54	41408	6368	25035	2852	1587	1182	109	177	4098
55	35977	3758	27328	1344	1268	159	11	62	2047
56	33552	2912	21190	1377	4913	109	17	50	2984
57	38083	6468	25764	896	2142	326	7	70	2410
58	37084	4144	29109	799	989	219	1	62	1761
59	34296	4743	25276	876	1357	133	9	67	1835
60	42491	6724	27577	1431	3015	524	16	66	3138
61	36079	13795	19196	1004	277	468	6	85	1248
62	35374	5020	16219	7686	1394	1241	286	188	3340
63	36657	5354	21476	3885	2542	469	134	118	2679
64	33374	5038	16536	5798	1755	794	237	112	3104
65	37475	3997	25109	2092	2442	556	165	163	2951
66	36320	2397	24820	1325	2984	212	24	115	4443
67	40176	2948	27505	1961	1466	2337	15	165	3779
68	45550	3894	26862	3066	3514	2624	245	130	5215
69	50493	4419	33734	2152	2491	2830	29	158	4680
70	37258	2418	26360	2251	1662	707	33	149	3678
71	37715	3647	20645	5931	1751	2070	62	146	3463
72	37319	10459	13339	7388	2086	533	131	140	3243
73	36412	4968	7817	18720	1310	254	91	103	3149
74	46193	3690	31321	1497	3093	1360	50	148	5034

75	48692	14743	19837	5205	1878	2708	54	163	4104
76	39673	4556	23757	2538	1833	2892	28	149	3920
77	38641	13940	14899	3534	2256	553	68	150	3241
78	36742	6252	20835	3170	1864	771	43	127	3680
79	40638	5579	22122	5133	1603	1973	26	199	4003
80	45293	3304	31665	1469	2533	1030	20	124	5148
81	38124	2647	26901	2828	869	1393	62	149	3275
82	59346	4272	38371	5830	1101	4640	43	227	4862
83	44015	3289	26298	6977	880	2647	79	176	3669
84	39775	12120	18098	4693	986	823	54	173	2828
85	37479	2891	25352	3866	790	1263	30	134	3153
86	33306	1826	14189	69	12680	343	22	53	4124
87	38678	8854	18705	4698	1015	1980	31	175	3220
88	35480	7793	19013	2628	981	2150	36	234	2645
89	35134	24698	6113	1735	1089	190	51	79	1179
90	48395	15788	20278	5476	1683	1550	51	137	3432
91	42809	5338	25173	2506	1329	4600	48	129	3686
92	36531	18048	10638	3915	1389	634	21	105	1781
93	39815	20446	11807	3041	1397	639	183	145	2157
94	38163	5357	16742	9787	1258	1093	101	151	3674
95	37273	3705	20198	6845	1308	983	100	184	3950
96	44844	2485	34498	1150	1700	830	26	142	4013
97	39188	2807	12554	19173	974	461	38	154	3027
98	43008	4924	27444	1886	2562	1297	18	145	4732
99	41386	5380	11701	18707	731	1246	51	228	3342
100	39970	4967	20744	7187	885	2567	45	190	3385
101	42302	2830	28152	4619	1635	614	36	166	4250

¹American Indian and Alaska Native Alone, not Latino

²Native Hawaiian and Pacific Islander Alone, not Latino

Percent Change of Population from 2010 to 2020 by Race and Ethnicity at State House District Level

DISTRICT	Total Population	Hispanic or Latino Origin	White Alone, not Latino	African American Alone, not Latino	AIAN Alone, not Latino ¹	Asian Alone, not Latino	NHPI Alone, not Latino ²	Other Alone, not Latino	Two or More, not Latino
1	-6.51%	20.60%	-15.96%	-11.02%	-9.13%	12.71%	15300.00%	152.94%	71.90%
2	-7.24%	18.55%	-18.71%	-19.01%	4.50%	48.02%	25.00%	592.86%	36.40%
3	-3.07%	4.57%	-12.77%	-22.47%	20.25%	33.94%	100.00%	250.00%	81.42%
4	0.14%	16.95%	-15.69%	-10.13%	2.17%	19.56%	55.56%	1200.00%	66.45%
5	-4.88%	31.84%	-10.55%	30.68%	-10.09%	-8.24%	100.00%	662.50%	42.80%
6	-1.34%	38.77%	-9.64%	-11.88%	-0.27%	3.20%	-40.74%	640.00%	50.32%
7	-4.73%	15.74%	-11.84%	24.38%	-5.72%	-7.78%	-19.19%	70.59%	54.24%
8	-0.42%	27.53%	-11.43%	31.37%	1.15%	54.59%	-5.00%	261.54%	72.92%
9	9.49%	62.26%	-2.95%	31.32%	3.60%	88.75%	-22.73%	535.71%	94.16%
10	-3.60%	25.24%	-13.15%	-15.45%	-7.95%	46.15%	37.50%	390.00%	85.59%
11	9.14%	49.46%	-4.31%	23.92%	7.25%	80.61%	-41.67%	344.83%	135.58%
12	1.89%	31.35%	-5.79%	-25.19%	4.58%	58.70%	-31.25%	307.41%	64.41%
13	-5.89%	37.08%	-11.76%	-21.45%	-1.88%	27.98%	20.00%	625.00%	37.90%
14	-4.35%	15.47%	-16.72%	-0.62%	-4.67%	35.23%	90.91%	966.67%	76.63%
15	-8.70%	19.68%	-15.65%	-9.01%	-0.35%	-36.70%	41.67%	700.00%	34.53%
16	-6.15%	51.44%	-14.89%	-21.96%	-1.70%	8.67%	520.00%	227.59%	50.53%
17	-7.86%	20.58%	-16.14%	-19.21%	-0.27%	61.87%	100.00%	511.11%	36.81%
18	-6.77%	24.49%	-15.59%	-13.75%	-0.25%	52.89%	107.14%	653.85%	50.22%
19	-5.86%	36.82%	-14.32%	-12.67%	-0.35%	28.17%	80.00%	1187.50%	58.64%
20	11.85%	57.60%	2.63%	-1.61%	17.14%	11.83%	31.25%	1157.14%	107.91%
21	10.34%	64.22%	-2.52%	11.76%	23.42%	32.86%	10.00%	333.33%	81.97%
22	-1.26%	42.94%	-11.19%	-4.89%	10.12%	15.56%	100.00%	687.50%	60.44%
23	3.24%	44.92%	-21.97%	-1.90%	0.16%	19.73%	1833.33%	306.67%	67.40%
24	-6.50%	25.29%	-14.24%	-18.11%	1.31%	58.21%	-50.00%	590.91%	41.60%
25	1.53%	44.98%	-12.59%	-2.05%	8.07%	52.46%	-23.53%	716.67%	97.69%
26	4.55%	50.09%	-5.77%	15.18%	1.88%	30.04%	0.00%	134.38%	92.60%

27	7.62%	56.87%	-1.41%	28.32%	-1.58%	32.17%	-25.81%	320.69%	109.00%
28	-1.57%	42.92%	-10.81%	-15.00%	2.22%	38.68%	-38.10%	287.10%	70.04%
29	1.15%	52.61%	-6.45%	-16.75%	0.00%	31.46%	137.50%	550.00%	75.23%
30	10.98%	58.99%	-1.85%	8.14%	10.66%	327.32%	7.69%	248.00%	107.54%
31	25.73%	96.40%	14.31%	-3.41%	20.54%	76.04%	85.71%	939.13%	218.59%
32	-2.93%	34.65%	-9.49%	-19.01%	7.08%	72.73%	14.29%	770.00%	94.64%
33	3.95%	69.24%	-4.55%	28.19%	2.89%	-21.80%	100.00%	585.00%	89.07%
34	5.99%	82.60%	-5.08%	3.32%	1.50%	5.58%	50.00%	225.00%	121.60%
35	-4.53%	51.15%	-11.51%	-15.18%	0.81%	47.41%	-38.89%	230.77%	69.65%
36	8.99%	60.16%	1.61%	0.58%	-1.60%	83.41%	100.00%	663.64%	81.24%
37	-5.86%	28.87%	-15.98%	-5.34%	-5.81%	2.49%	2877.78%	1766.67%	93.13%
38	-5.96%	15.15%	-11.61%	-14.38%	-2.41%	6.45%	227.27%	173.08%	85.18%
39	19.81%	74.13%	6.08%	46.01%	8.59%	54.74%	47.37%	303.23%	170.09%
40	2.67%	63.22%	-15.97%	-8.76%	6.29%	30.67%	127.80%	120.45%	133.48%
41	49.10%	162.14%	28.97%	98.42%	52.63%	127.52%	536.11%	811.11%	291.41%
42	2.71%	40.82%	-6.93%	-2.62%	7.50%	50.88%	580.00%	572.73%	100.00%
43	31.97%	148.03%	12.72%	143.86%	27.77%	18.29%	78.26%	441.18%	235.44%
44	4.92%	68.72%	-5.46%	-6.15%	-10.86%	-20.70%	-16.67%	2364.10%	71.81%
45	19.32%	70.89%	4.09%	31.83%	8.13%	46.28%	80.00%	144.44%	156.70%
46	20.17%	57.37%	5.65%	99.57%	13.76%	42.59%	33.33%	281.40%	160.33%
47	32.29%	119.59%	15.67%	142.83%	20.38%	36.87%	171.43%	533.33%	250.40%
48	-2.42%	39.43%	-12.94%	-11.30%	1.40%	-2.54%	400.00%	2468.42%	64.43%
49	3.83%	32.52%	-6.32%	-5.92%	3.23%	113.91%	800.00%	10500.00%	79.90%
50	-6.98%	19.09%	-14.96%	-7.98%	-12.26%	10.84%	54.55%	1244.44%	94.43%
51	3.76%	41.24%	-4.52%	22.62%	6.05%	40.00%	7.69%	740.00%	132.49%
52	-8.18%	6.46%	-15.87%	-17.46%	-0.76%	4.62%	30.51%	65.85%	89.41%
53	21.04%	67.50%	4.41%	47.93%	13.09%	58.09%	45.00%	434.21%	152.19%
54	11.25%	59.44%	-6.37%	56.45%	-0.19%	21.48%	289.29%	742.86%	99.51%
55	-3.30%	-1.34%	-9.10%	22.07%	10.17%	-22.82%	83.33%	158.33%	142.54%
56	-9.00%	17.18%	-15.88%	-5.62%	-14.60%	-19.85%	6.25%	108.33%	64.95%
57	1.92%	39.49%	-8.64%	-1.65%	-6.42%	4.49%	0.00%	204.35%	144.17%

58	0.23%	40.67%	-7.13%	-3.85%	10.63%	3.30%	-93.33%	148.00%	140.57%
59	-7.69%	-16.88%	-9.49%	-11.43%	-13.40%	-4.32%	80.00%	737.50%	125.71%
60	15.13%	69.54%	2.03%	14.76%	4.11%	63.75%	-11.11%	175.00%	123.03%
61	-2.32%	22.94%	-20.46%	191.86%	-21.53%	35.26%	-40.00%	97.67%	156.26%
62	-5.32%	12.86%	-16.00%	-10.86%	2.35%	-1.04%	33.64%	218.64%	59.35%
63	-1.58%	18.27%	-9.20%	-7.17%	-11.83%	20.26%	-4.29%	202.56%	87.34%
64	-10.28%	8.13%	-21.42%	-11.76%	-4.98%	4.06%	41.92%	143.48%	47.60%
65	1.00%	43.83%	-8.73%	-3.19%	-10.65%	81.11%	21.32%	715.00%	102.54%
66	-2.07%	34.97%	-11.86%	-16.19%	-10.79%	8.72%	166.67%	310.71%	123.04%
67	8.72%	79.76%	-7.95%	46.13%	16.91%	57.37%	36.36%	385.29%	189.36%
68	23.54%	67.05%	2.62%	25.50%	14.43%	434.42%	1533.33%	306.25%	125.66%
69	35.82%	80.96%	16.06%	46.99%	39.24%	215.85%	123.08%	276.19%	219.89%
70	0.89%	51.88%	-9.50%	-0.31%	1.03%	25.13%	37.50%	272.50%	118.93%
71	0.87%	-5.74%	-12.20%	15.32%	-8.90%	110.15%	264.71%	197.96%	83.13%
72	0.11%	51.10%	-16.96%	-17.74%	-17.52%	32.26%	40.86%	191.67%	44.91%
73	-1.38%	27.94%	6.19%	-17.12%	14.71%	185.39%	225.00%	164.10%	75.82%
74	24.08%	82.76%	6.77%	68.58%	30.29%	115.87%	28.21%	393.33%	163.15%
75	30.51%	63.12%	4.65%	22.76%	22.19%	53.86%	237.50%	219.61%	139.72%
76	6.76%	69.49%	-12.48%	26.08%	19.57%	39.31%	133.33%	282.05%	136.86%
77	4.83%	65.13%	-24.11%	2.08%	-18.35%	59.37%	106.06%	284.62%	51.31%
78	-0.23%	22.32%	-15.35%	22.82%	-7.40%	36.22%	104.76%	273.53%	95.02%
79	9.12%	27.75%	-10.50%	47.04%	13.21%	26.80%	-10.34%	255.36%	148.79%
80	22.67%	96.67%	5.28%	61.43%	23.98%	117.30%	53.85%	416.67%	202.47%
81	3.11%	40.80%	-6.22%	8.52%	-10.04%	2.50%	21.57%	223.91%	137.32%
82	59.49%	178.67%	34.26%	106.15%	66.31%	111.87%	115.00%	632.26%	255.93%
83	18.14%	66.78%	0.98%	33.45%	23.25%	46.40%	192.59%	266.67%	159.29%
84	6.88%	64.27%	-19.15%	19.23%	-8.70%	8.15%	17.39%	343.59%	77.75%
85	0.97%	44.69%	-8.92%	4.91%	-18.13%	9.45%	57.89%	185.11%	122.67%
86	-10.31%	8.63%	-17.75%	-25.00%	-10.52%	15.88%	-4.35%	278.57%	14.33%
87	4.37%	58.82%	-19.34%	15.26%	-6.11%	33.96%	29.17%	243.14%	103.28%
88	-4.60%	1.90%	-4.99%	-34.68%	-28.86%	-14.00%	-20.00%	350.00%	72.65%

89	-5.36%	2.39%	-32.13%	13.47%	-20.57%	26.67%	264.29%	27.42%	35.52%
90	30.19%	77.77%	1.00%	42.83%	9.00%	26.74%	112.50%	291.43%	120.71%
91	15.17%	85.80%	-5.03%	44.19%	10.66%	37.85%	128.57%	279.41%	152.64%
92	-2.27%	20.23%	-25.75%	-15.50%	-21.66%	57.71%	16.67%	110.00%	52.88%
93	6.91%	56.60%	-33.09%	13.05%	-19.99%	-1.69%	490.32%	314.29%	55.29%
94	2.34%	84.34%	-18.61%	9.66%	-4.48%	6.22%	36.49%	228.26%	51.63%
95	1.24%	49.46%	-16.86%	23.36%	-5.56%	8.14%	51.52%	268.00%	89.36%
96	20.37%	76.99%	10.82%	13.86%	11.99%	54.56%	13.04%	238.10%	152.55%
97	5.57%	72.63%	7.74%	-7.93%	27.82%	40.12%	100.00%	242.22%	62.65%
98	16.65%	88.80%	-0.36%	26.24%	18.12%	21.21%	5.88%	353.13%	144.17%
99	10.61%	66.36%	18.62%	-10.11%	9.60%	61.82%	121.74%	256.25%	68.36%
100	6.70%	51.11%	-14.20%	32.67%	-0.23%	20.80%	9.76%	313.04%	128.72%
101	14.30%	76.99%	2.27%	11.09%	14.50%	26.08%	12.50%	435.48%	143.41%

¹American Indian and Alaska Native Alone, not Latino

²Native Hawaiian and Pacific Islander Alone, not Latino

Variable Definitions

District shapefiles were retrieved from the Redistricting Data Hub, All About Redistricting, and the U.S. Census. The list of variables below can be found in the P1 and P2 table of the PL 94-171. Data was retrieved from the Redistricting Data Hub processed legacy file of the PL 94-171.

Variable Name in Report	Census Variable Reference
Total Population	P0010001
Hispanic or Latino Origin	P0020002
White Alone, not Latino	P0020005
African American Alone, not Latino	P0020006
American Indian and Alaska Native Alone, not Latino	P0020007
Asian Alone, not Latino	P0020008
Native Hawaiian and Pacific Islander Alone, not Latino	P0020009
Other Alone, not Latino	P0020010
Two or More, not Latino	P0020011