

HAYSTAQ DNA

North Carolina

Overview	2
Congressional	2
Total Population	3
Population by Race and Ethnicity	4
State Senate	8
Total Population	8
Population by Race and Ethnicity	11
Charlotte	13
Raleigh	18
State House	28
Total Population	29
Population by Race and Ethnicity	34
Charlotte	36
Raleigh	42
Variable definitions	59

Overview

Overall, North Carolina's population increased by 9.48% between 2010 and 2020 as 903,876 people were added over the last decade. As a result, the number of Congressional Districts will increase in 2022 to 14.

North Carolina saw a majority of its population growth occur in the metropolitan areas of its Piedmont Region (i.e. Winston-Salem and Greensboro) with additional growth along the western, mountainous side of the state. There were declines in the coastal region (i.e. Roanoke Rapids) with some increases centered around cities such as Durham, Charlotte, and Raleigh, North Carolina. This aligns with the general national trend of movement from rural to urban/suburban areas.

The White population grew by 1.42% over the decade. However, The *overall share* of the population statewide decreased for Whites during this same time, dropping from a 65.27% share in 2010 to 60.46% in 2020. The White population declined in half of the state's (rural) districts, but grew at a similar rate to other communities in urban areas along the center of the state.

African Americans also saw their share of the overall population decrease. However, it was a much smaller extent, falling just under one percent to 20.19% in 2020 from 21.18% in the 2010 Census. Over the decade, growth of the African American population was relatively more concentrated in the central parts of the state, with declines across the southeast and west.

The Latino population grew by 39.80% over the decade. This growth occurred across all areas statewide, though increases were concentrated slightly more to the western side of the state. The *overall share* of the population of Latinos is now 10.72% compared to 8.39% in the 2010 Census.

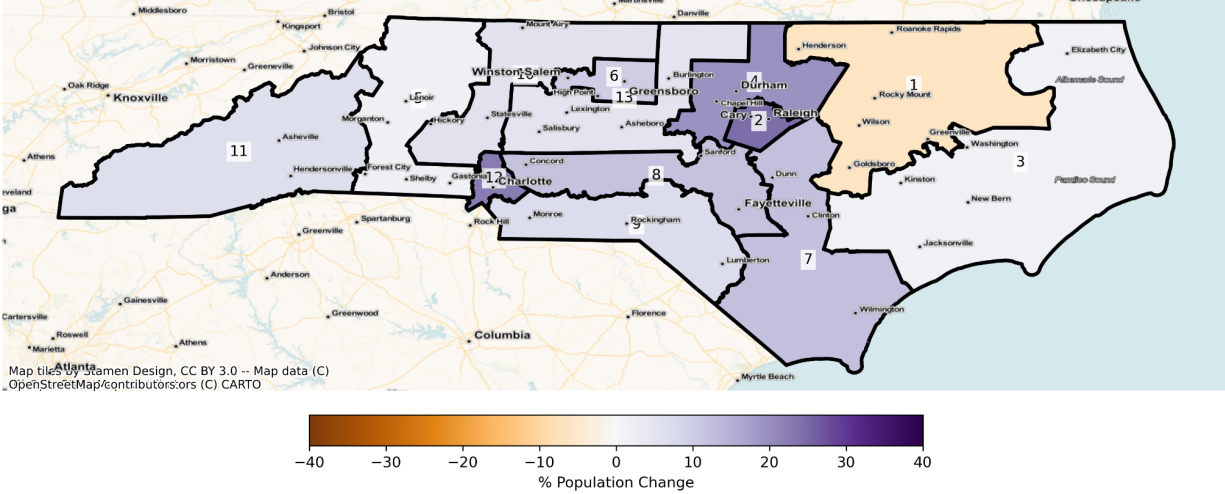
The Asian population grew by 64.61% over the decade across the state, though most significantly around Rockingham and Monroe in the south. The *overall share* of the population for Asians is now 3.26% compared to 2.17% in the 2010 Census.

Congressional

The charts below display the percent change in population from 2010 to 2020 for the listed group. Please note that the color bars are fixed to be from -40% to 40% and these maps are displayed in brown to purple. If the percent change in population was outside of this range, the color scheme changes to red to green to indicate a change.

Total Population

NC Congressional Districts
Population % Change from 2010 to 2020
Total Population

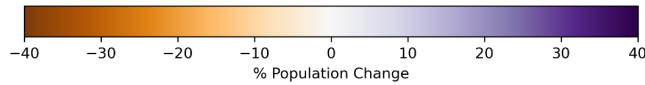
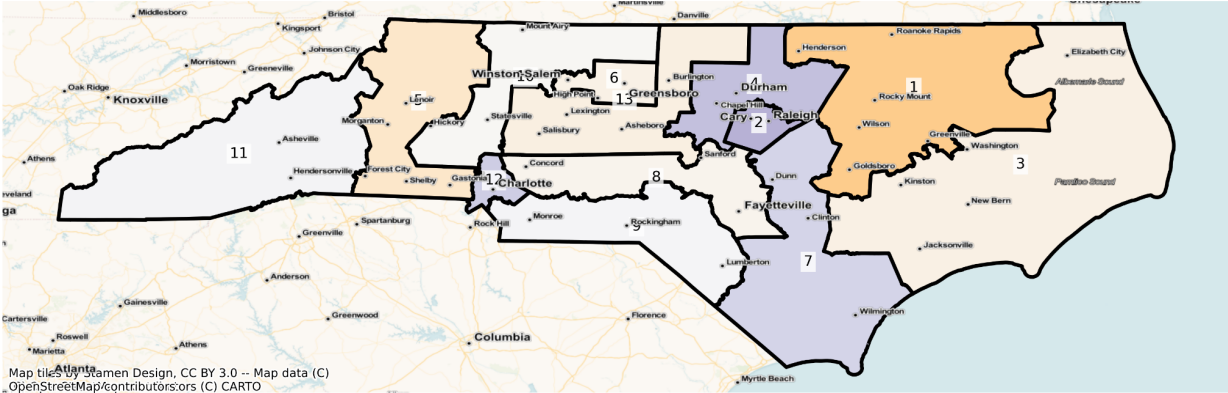


Total Population from 2010 to 2020 at Congressional District Level

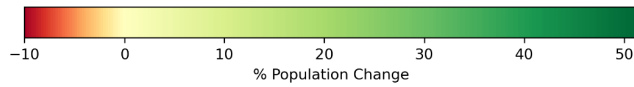
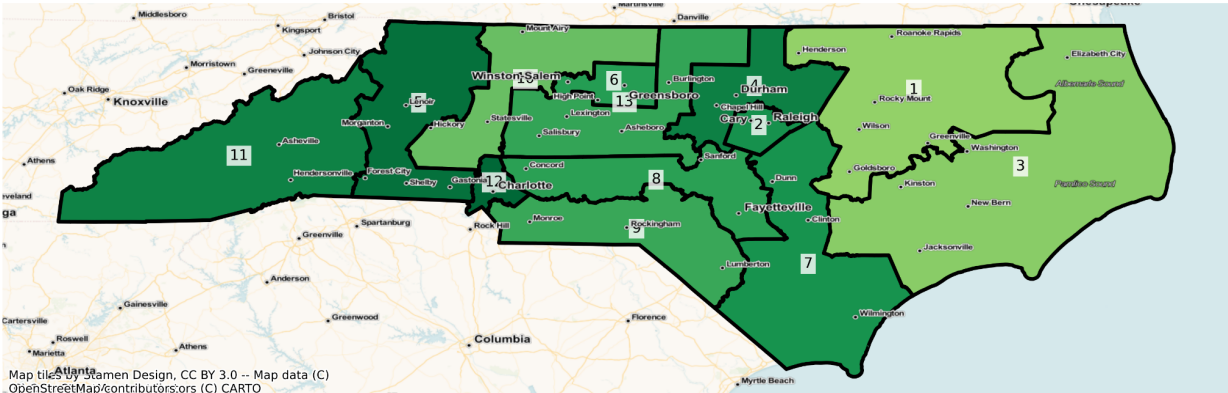
DISTRICT	Total Population 2010	Total Population 2020	Total Population % Change
1	733,544	687,587	-6.27%
2	733,499	912,752	24.44%
3	733,430	745,750	1.68%
4	733,573	877,493	19.62%
5	733,496	747,840	1.96%
6	733,498	807,200	10.05%
7	733,522	824,073	12.34%
8	733,637	820,792	11.88%
9	732,331	784,963	7.19%
10	733,499	775,748	5.76%
11	733,502	782,217	6.64%
12	734,528	901,297	22.70%
13	733,424	771,647	5.21%

Population by Race and Ethnicity

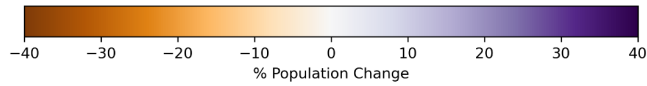
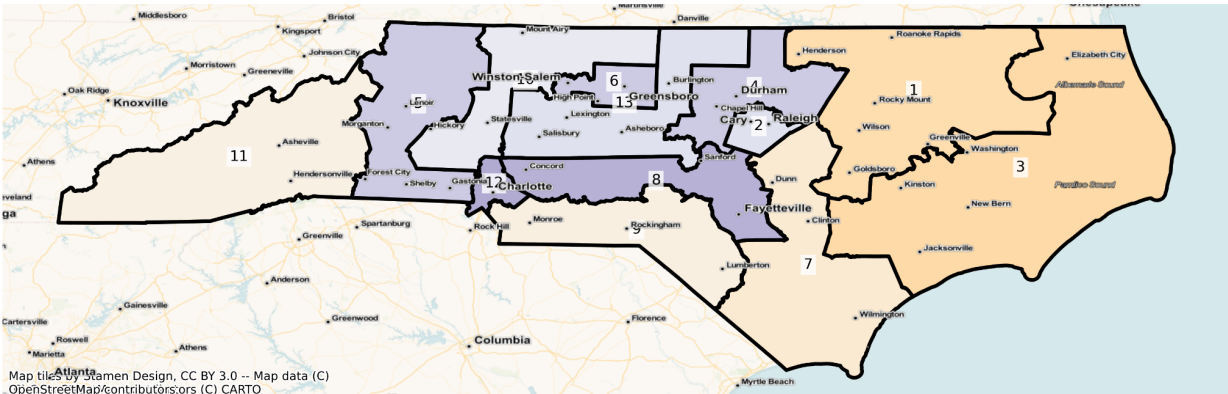
NC Congressional Districts
Population % Change from 2010 to 2020
Ethnicity: Not Latino White alone



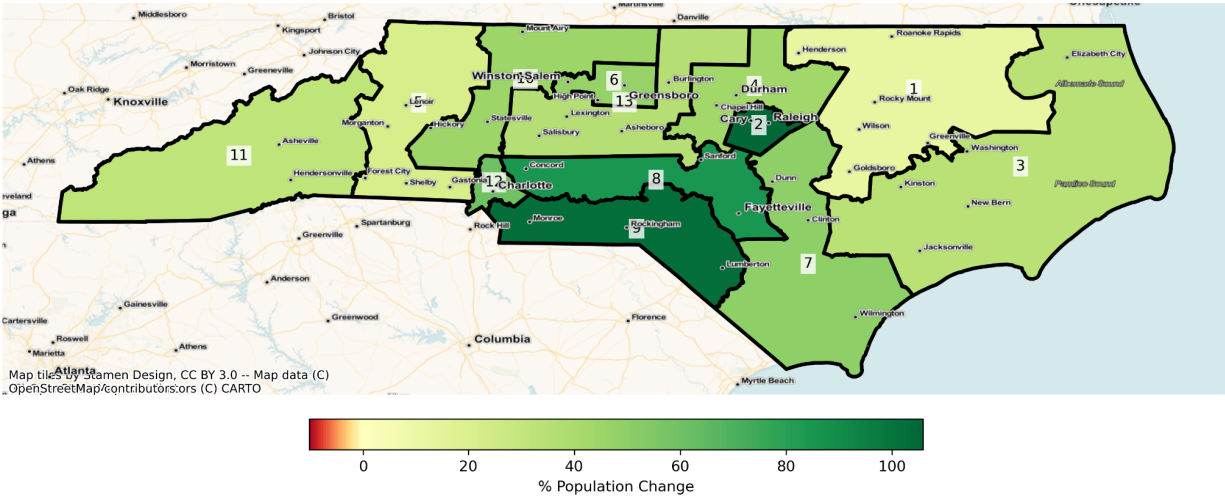
NC Congressional Districts Population % Change from 2010 to 2020 Ethnicity: Hispanic or Latino



NC Congressional Districts Population % Change from 2010 to 2020 Ethnicity: Not Latino African American alone



NC Congressional Districts
Population % Change from 2010 to 2020
Ethnicity: Not Latino Asian alone



2010 Population by Race and Ethnicity at Congressional District Level

DISTRICT	Total Population	Hispanic or Latino Origin	White Alone, not Latino	African American Alone, not Latino	AIAN Alone, not Latino ¹	Asian Alone, not Latino	NHPI Alone, not Latino ²	Other Alone, not Latino	Two or More, not Latino
1	733,544	45,310	351,255	315,566	5,366	5,640	180	959	9,268
2	733,499	73,051	448,296	151,331	2,062	43,240	270	1,448	13,801
3	733,430	54,983	500,198	151,306	2,885	8,436	737	884	14,001
4	733,573	74,397	426,821	188,282	2,193	27,434	252	1,527	12,667
5	733,496	35,476	604,821	72,284	1,779	8,607	294	724	9,511
6	733,498	67,422	392,607	232,364	2,683	23,601	329	1,650	12,842
7	733,522	62,110	517,268	131,257	6,382	4,819	278	998	10,410
8	733,637	73,050	439,652	180,805	6,498	13,066	1,309	1,279	17,978
9	732,331	56,229	447,652	135,084	61,708	17,369	331	1,342	12,616
10	733,499	54,690	582,885	72,706	1,906	11,080	166	819	9,247
11	733,502	40,340	638,379	27,536	10,167	5,259	505	665	10,651
12	734,528	99,913	322,265	263,140	2,436	30,846	436	1,913	13,579
13	733,424	63,149	551,896	98,193	2,764	7,182	172	880	9,188

¹American Indian and Alaska Native Alone, Not Latino

²Native Hawaiian and Pacific Islander Alone, Not Latino

2020 Population by Race and Ethnicity at Congressional District Level

DISTRICT	Total Population	Hispanic or Latino Origin	White Alone, not Latino	African American Alone, not Latino	AIAN Alone, not Latino ¹	Asian Alone, not Latino	NHPI Alone, not Latino ²	Other Alone, not Latino	Two or More, not Latino
1	687,587	55,888	308,527	288,125	4,817	6,318	231	2,535	21,146
2	912,752	103,846	515,143	160,623	2,226	88,995	375	5,082	36,462
3	745,750	68,820	488,220	137,313	2,704	11,328	1,134	3,097	33,134
4	877,493	108,701	479,114	208,072	2,171	39,312	266	4,448	35,409
5	747,840	52,973	572,009	79,854	1,902	10,515	213	2,486	27,888
6	807,200	94,035	384,289	256,924	2,607	34,771	391	4,024	30,159
7	824,073	88,238	563,051	125,247	6,196	7,242	372	3,069	30,658
8	820,792	101,255	434,154	207,534	6,582	24,118	1,760	4,306	41,083
9	784,963	76,846	451,240	131,634	53,612	35,299	488	3,723	32,121
10	775,748	71,176	580,178	75,451	1,918	16,116	255	2,405	28,249
11	782,217	58,644	644,573	26,857	10,934	6,937	789	2,861	30,622
12	901,297	151,233	354,548	305,736	2,349	49,369	455	5,669	31,938
13	771,647	86,932	537,099	104,153	2,863	9,739	251	2,634	27,976

¹American Indian and Alaska Native Alone, Not Latino

²Native Hawaiian and Pacific Islander Alone, Not Latino

Percent Change in Population from 2010 to 2020 by Race and Ethnicity at Congressional District Level

DISTRICT	Total Population	Hispanic or Latino Origin	White Alone, not Latino	African American Alone, not Latino	AIAN Alone, not Latino ¹	Asian Alone, not Latino	NHPI Alone, not Latino ²	Other Alone, not Latino	Two or More, not Latino
1	-6.27%	23.35%	-12.16%	-8.70%	-10.23%	12.02%	28.33%	164.34%	128.16%
2	24.44%	42.16%	14.91%	6.14%	7.95%	105.82%	38.89%	250.97%	164.20%
3	1.68%	25.17%	-2.39%	-9.25%	-6.27%	34.28%	53.87%	250.34%	136.65%
4	19.62%	46.11%	12.25%	10.51%	-1.00%	43.30%	5.56%	191.29%	179.54%
5	1.96%	49.32%	-5.43%	10.47%	6.91%	22.17%	-27.55%	243.37%	193.22%
6	10.05%	39.47%	-2.12%	10.57%	-2.83%	47.33%	18.84%	143.88%	134.85%
7	12.34%	42.07%	8.85%	-4.58%	-2.91%	50.28%	33.81%	207.52%	194.51%

8	11.88%	38.61%	-1.25%	14.78%	1.29%	84.59%	34.45%	236.67%	128.52%
9	7.19%	36.67%	0.80%	-2.55%	-13.12%	103.23%	47.43%	177.42%	154.61%
10	5.76%	30.14%	-0.46%	3.78%	0.63%	45.45%	53.61%	193.65%	205.49%
11	6.64%	45.37%	0.97%	-2.47%	7.54%	31.91%	56.24%	330.23%	187.50%
12	22.70%	51.36%	10.02%	16.19%	-3.57%	60.05%	4.36%	196.34%	135.20%
13	5.21%	37.66%	-2.68%	6.07%	3.58%	35.60%	45.93%	199.32%	204.48%

¹American Indian and Alaska Native Alone, Not Latino

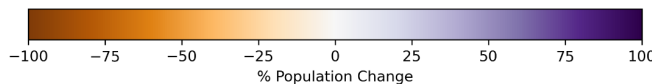
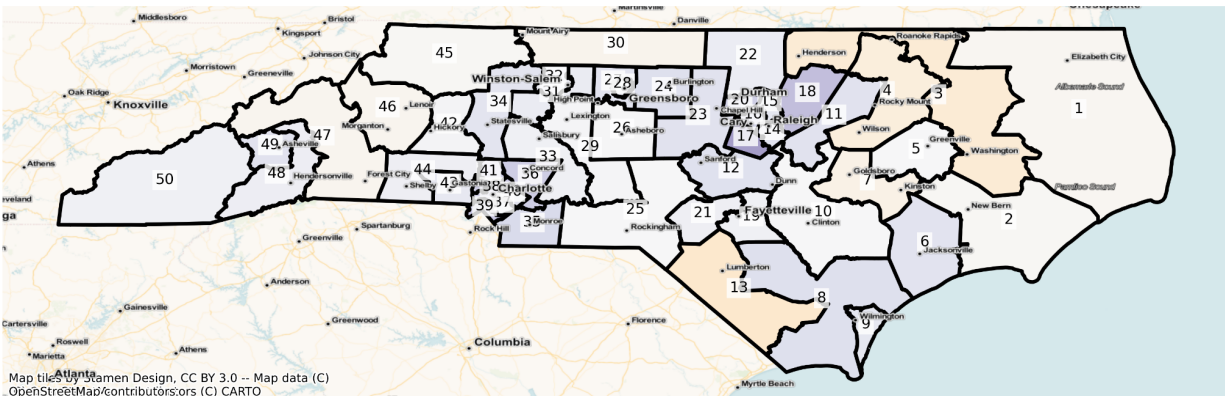
²Native Hawaiian and Pacific Islander Alone, Not Latino

State Senate

The charts below display the percent change in population from 2010 to 2020 for the listed group. Please note that the color bars are fixed to be from -100% to 100% and these maps are displayed in brown to purple. If the percent change in population was outside of this range, the color scheme changes to red to green to indicate a change.

Total Population

NC State Senate Districts
Population % Change from 2010 to 2020
Total Population



Map tiles by Stamen Design, CC BY 3.0 -- Map data (C) OpenStreetMap/contributors,ors (C) CARTO

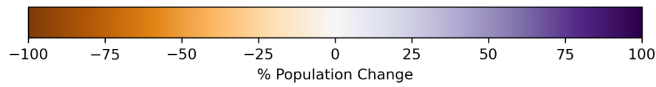
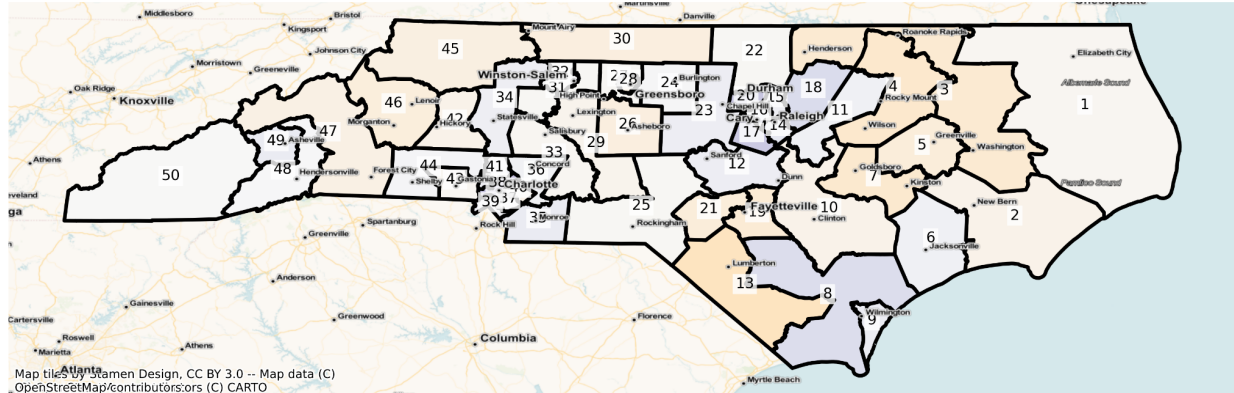
Total Population from 2010 to 2020 at State Senate District Level

DISTRICT	Total Population 2010	Total Population 2020	Total Population % Change
1	196,526	193,394	-1.59%
2	183,118	180,699	-1.32%
3	181,778	163,010	-10.32%
4	192,877	176,679	-8.40%
5	189,520	190,778	0.66%
6	187,902	213,710	13.73%
7	182,144	172,424	-5.34%
8	199,397	231,064	15.88%
9	198,108	221,193	11.65%
10	181,478	181,908	0.24%
11	190,494	218,371	14.63%
12	186,695	214,521	14.90%
13	192,258	167,160	-13.05%
14	198,654	225,103	13.31%
15	192,285	214,206	11.40%
16	187,230	227,924	21.73%
17	199,914	290,116	45.12%
18	183,529	241,143	31.39%
19	183,321	193,279	5.43%
20	184,237	228,967	24.28%
21	183,536	194,131	5.77%
22	182,730	195,601	7.04%
23	197,380	225,192	14.09%
24	197,106	228,720	16.04%
25	197,963	198,863	0.45%
26	186,410	189,222	1.51%
27	199,843	226,571	13.37%
28	197,930	212,198	7.21%
29	190,676	194,632	2.07%

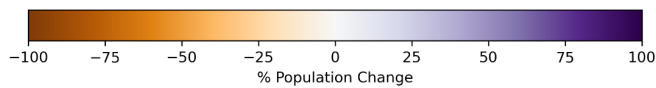
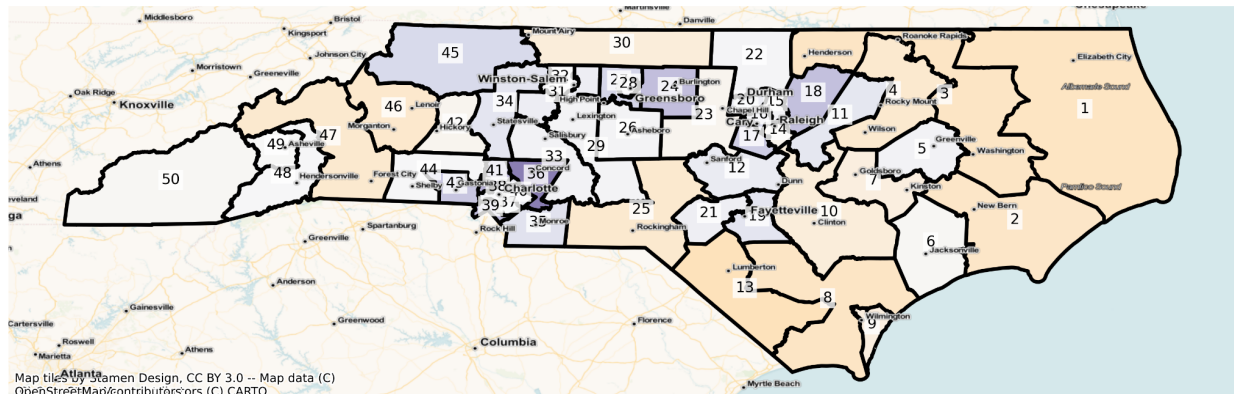
30	198,458	191,090	-3.71%
31	192,050	207,606	8.10%
32	199,837	217,715	8.95%
33	199,042	209,287	5.15%
34	197,800	223,875	13.18%
35	189,794	226,519	19.35%
36	189,509	237,583	25.37%
37	183,991	204,926	11.38%
38	182,531	231,742	26.96%
39	181,402	233,010	28.45%
40	183,115	209,608	14.47%
41	188,589	236,256	25.28%
42	191,556	196,413	2.54%
43	197,035	217,847	10.56%
44	185,394	196,936	6.23%
45	198,876	196,180	-1.36%
46	191,738	186,134	-2.92%
47	187,476	182,879	-2.45%
48	185,173	198,027	6.94%
49	192,978	220,725	14.38%
50	194,100	204,222	5.21%

Population by Race and Ethnicity

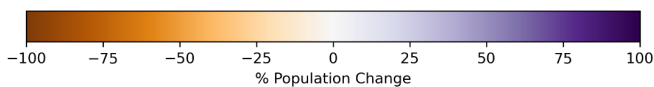
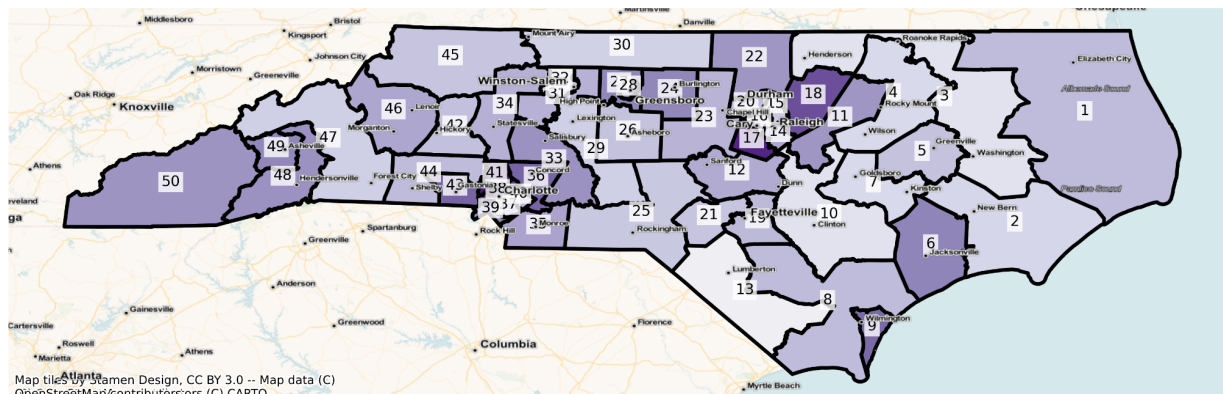
NC State Senate Districts
Population % Change from 2010 to 2020
Ethnicity: Not Latino White alone



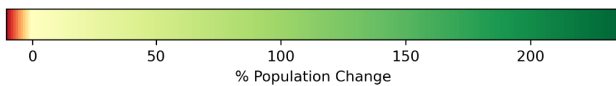
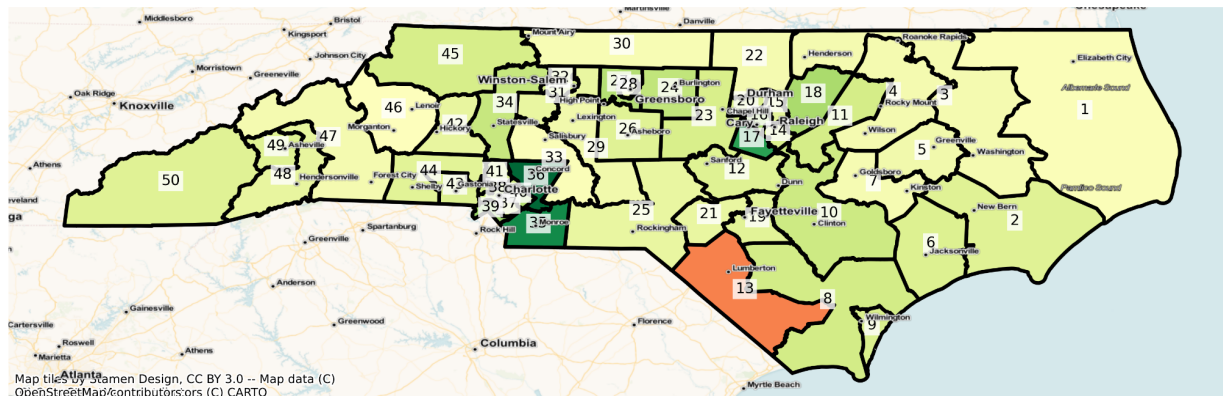
NC State Senate Districts
Population % Change from 2010 to 2020
Ethnicity: Not Latino African American alone



NC State Senate Districts Population % Change from 2010 to 2020 Ethnicity: Hispanic or Latino

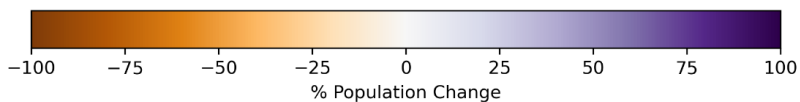
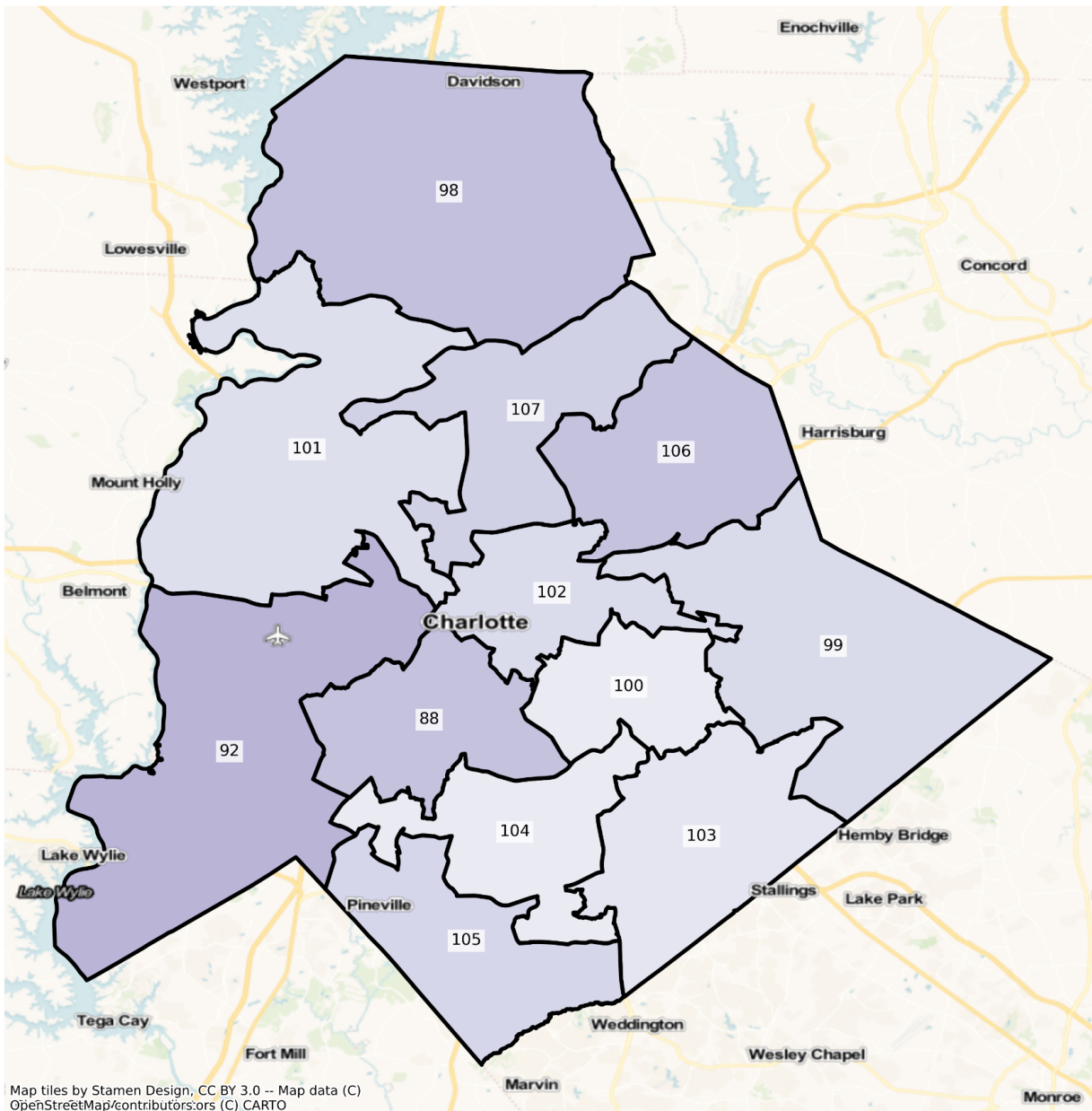


NC State Senate Districts Population % Change from 2010 to 2020 Ethnicity: Not Latino Asian alone

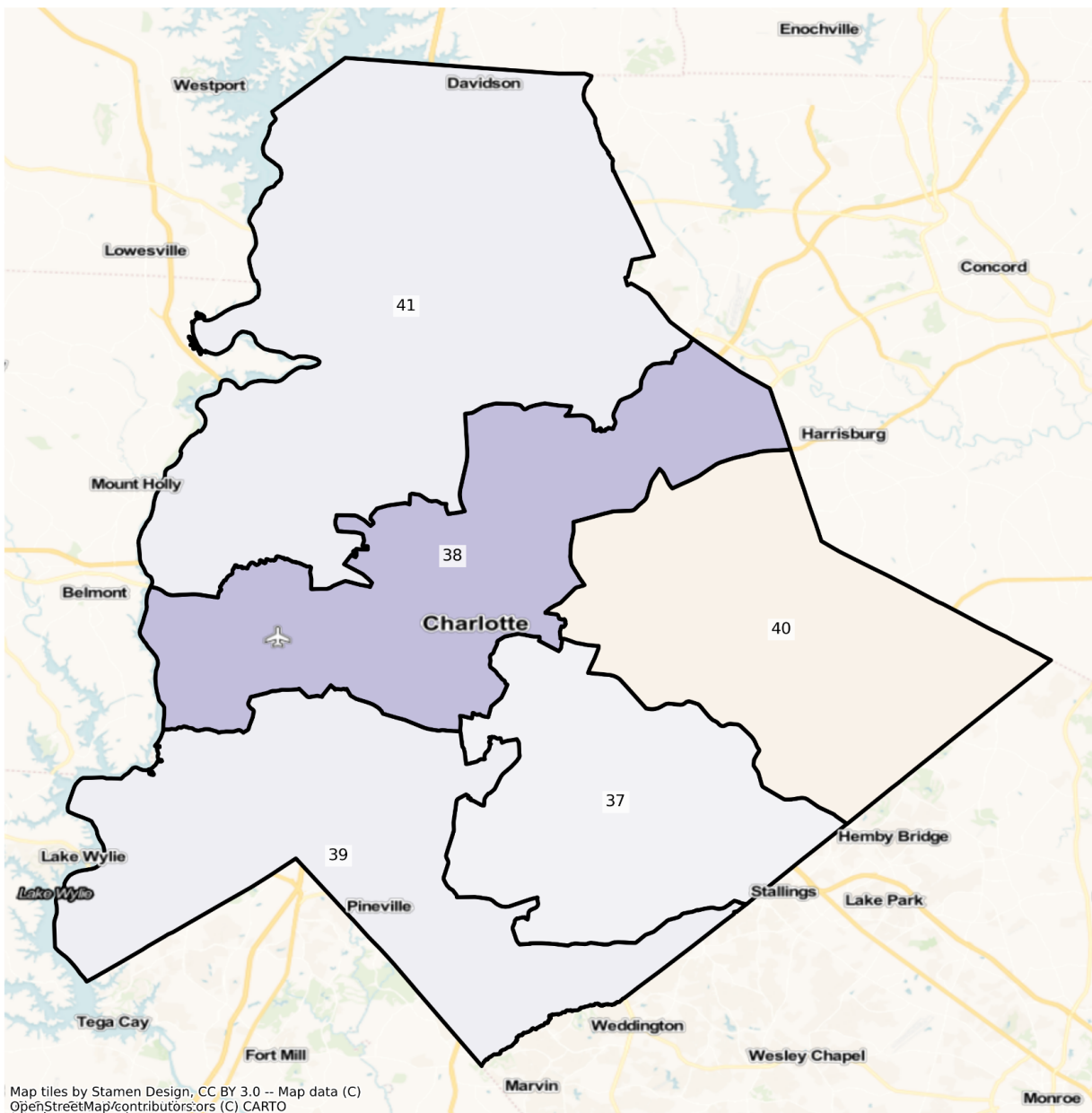


Charlotte

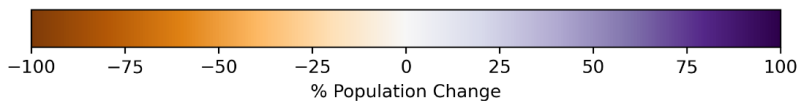
NC Charlotte State House Districts
Population % Change from 2010 to 2020
Total Population



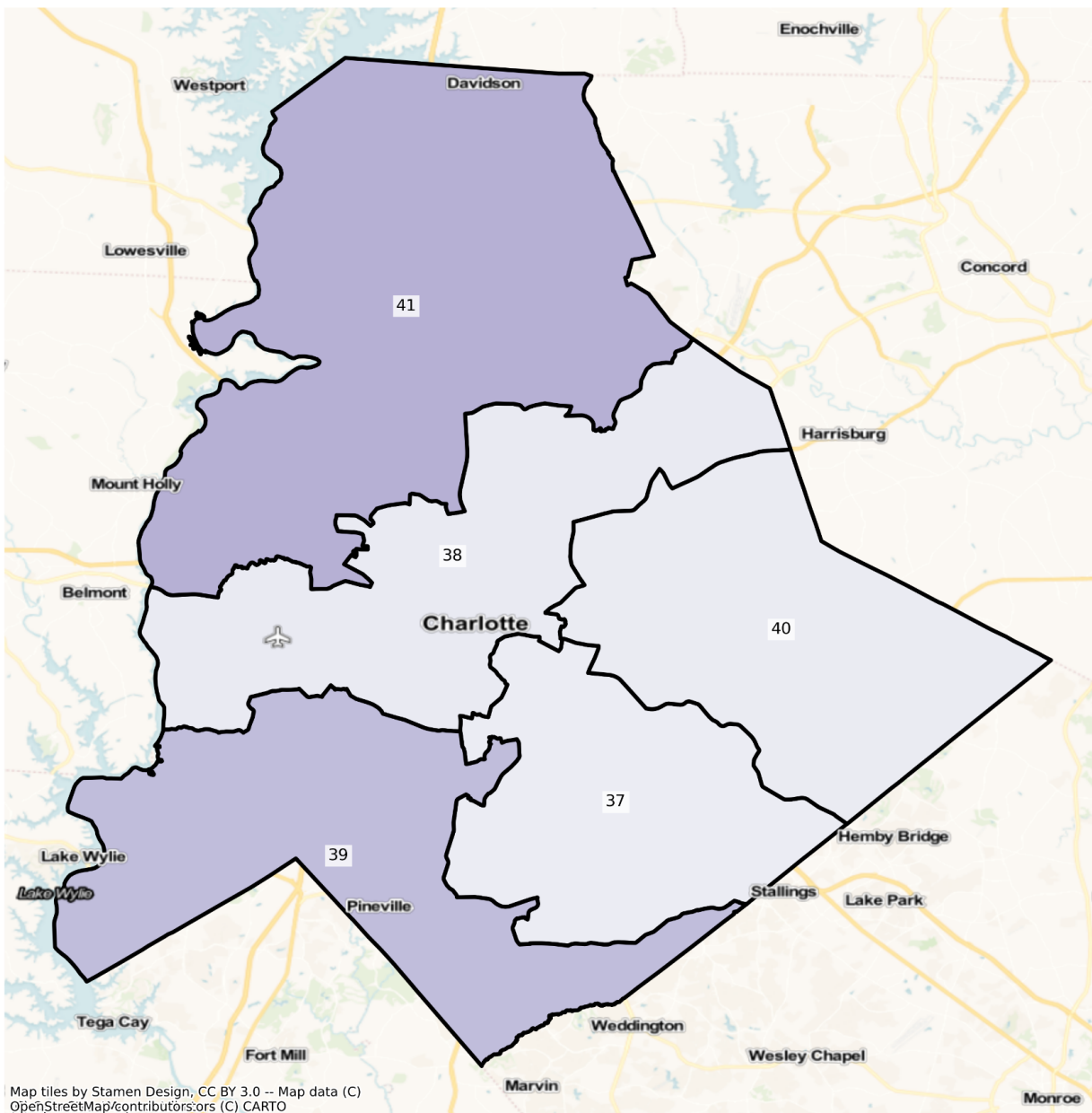
NC Charlotte State Senate Districts
Population % Change from 2010 to 2020
Ethnicity: Not Latino White alone



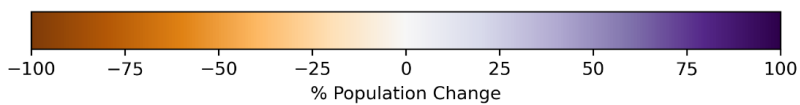
Map tiles by Stamen Design, CC BY 3.0 -- Map data (C) OpenStreetMap/contributors;ors (C) CARTO



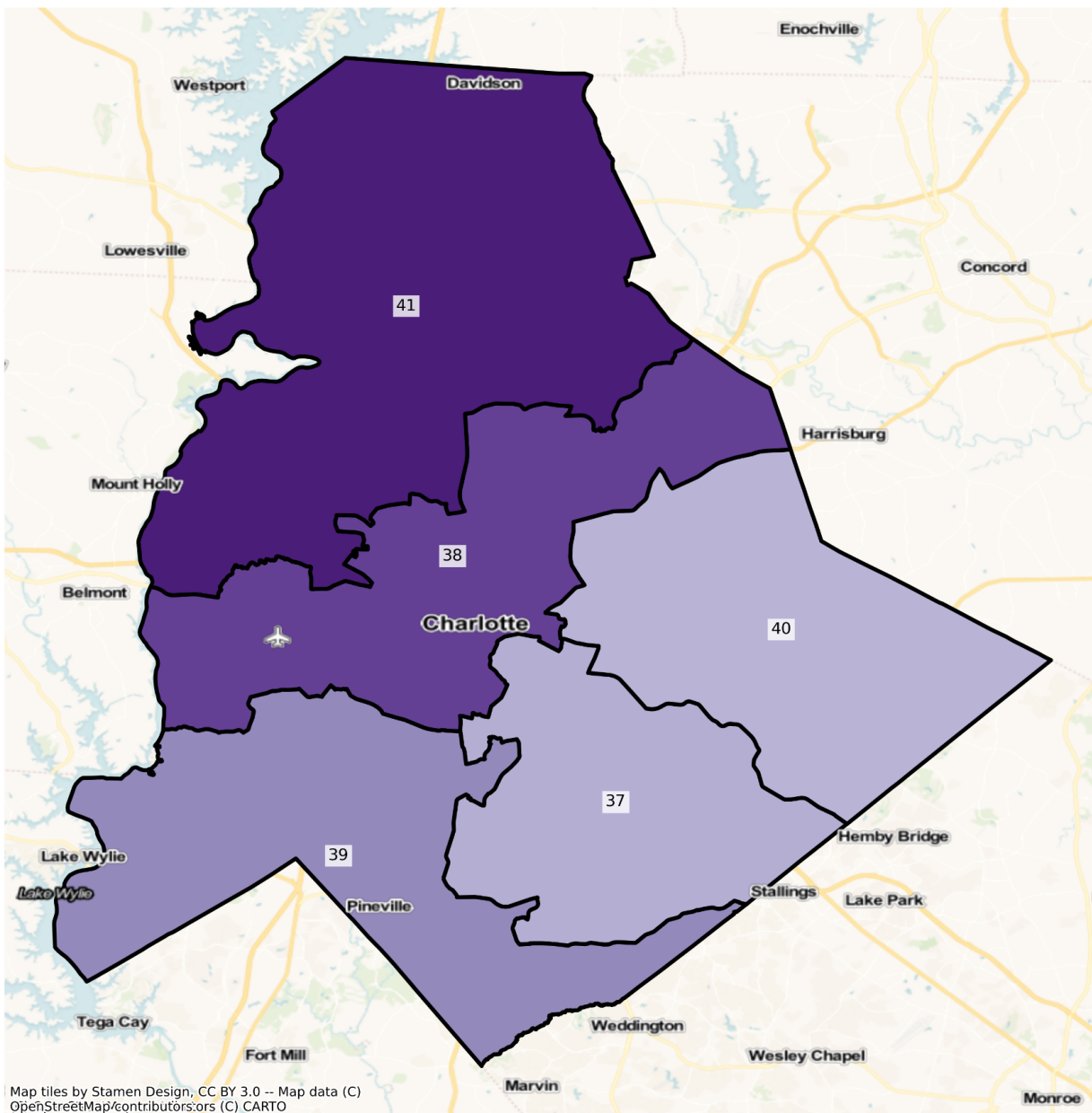
NC Charlotte State Senate Districts
Population % Change from 2010 to 2020
Ethnicity: Not Latino African American alone



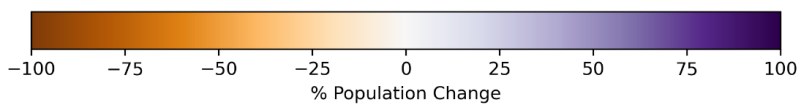
Map tiles by Stamen Design, CC BY 3.0 -- Map data (C) OpenStreetMap/contributors/ors (C) CARTO



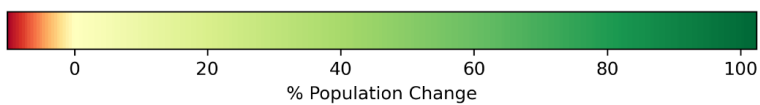
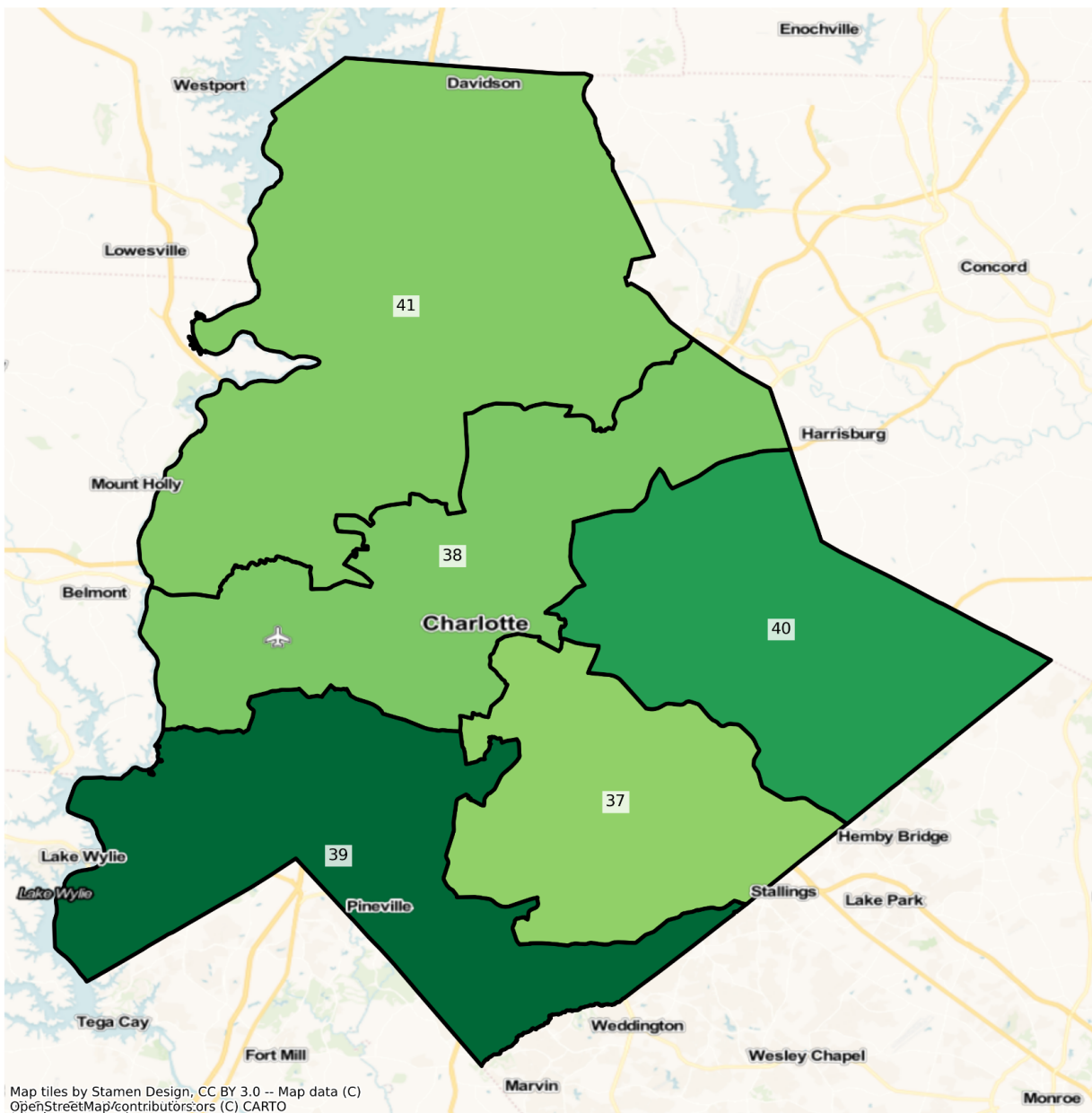
NC Charlotte State Senate Districts Population % Change from 2010 to 2020 Ethnicity: Hispanic or Latino



Map tiles by Stamen Design, CC BY 3.0 -- Map data (C) OpenStreetMap/contributors/ors (C) CARTO

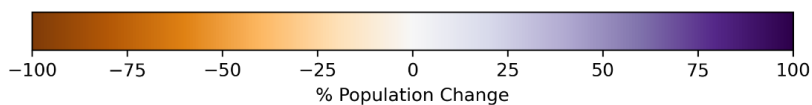
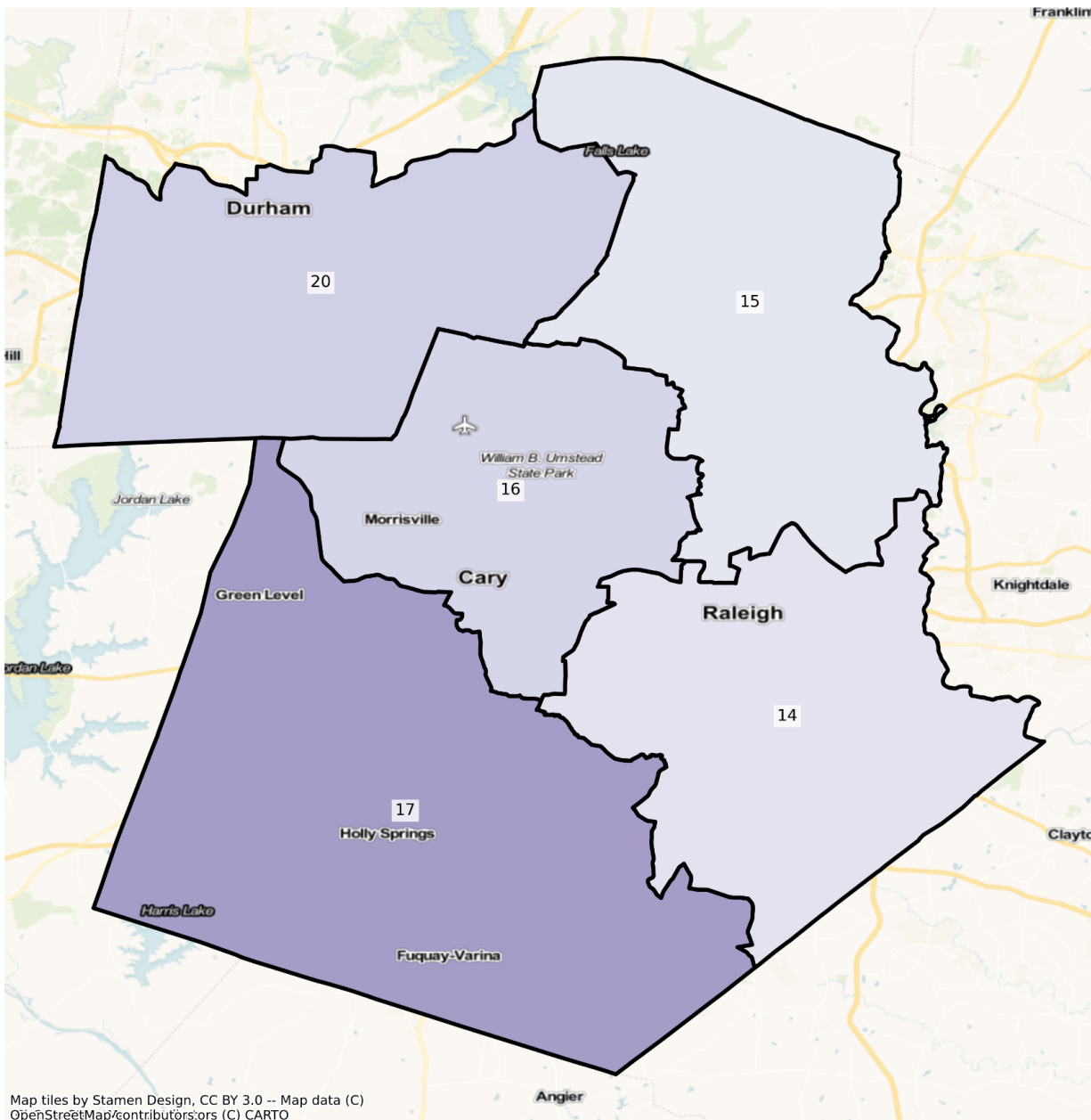


NC Charlotte State Senate Districts Population % Change from 2010 to 2020 Ethnicity: Not Latino Asian alone

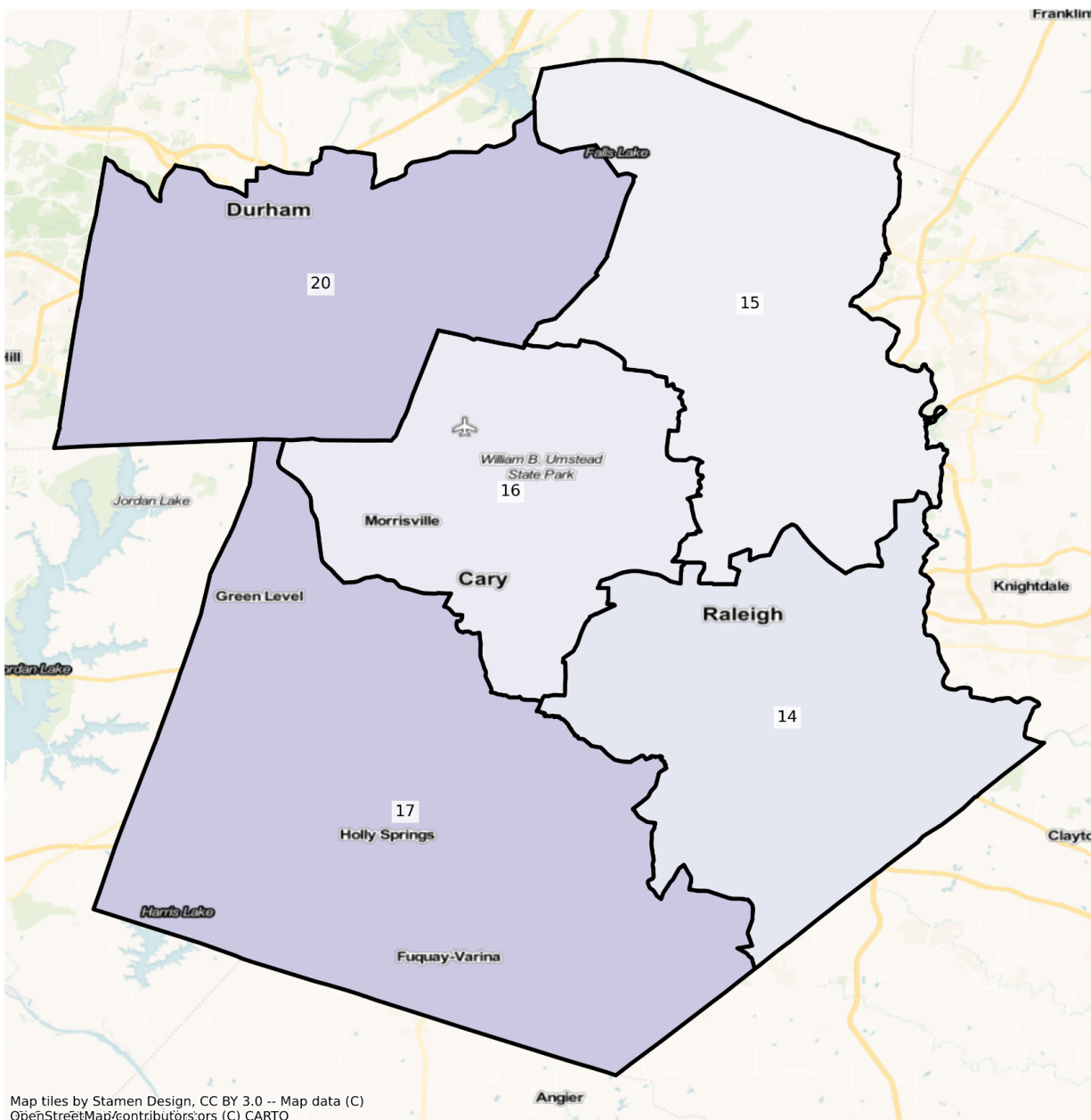


Raleigh

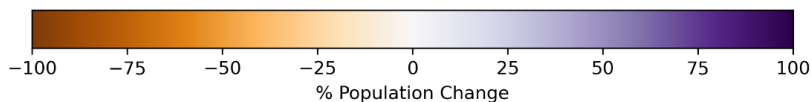
NC Raleigh State Senate Districts
Population % Change from 2010 to 2020
Total Population



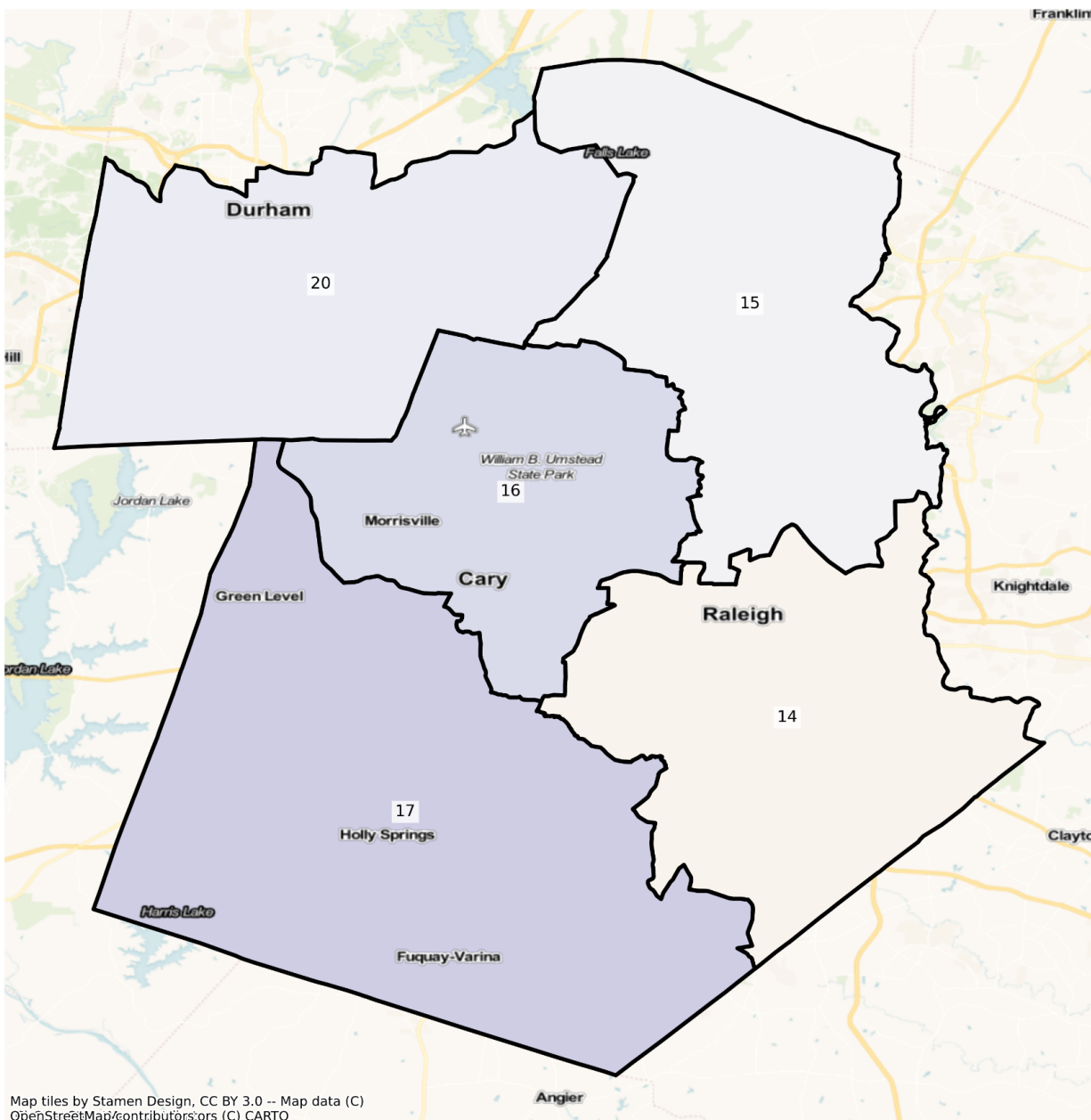
NC Raleigh State Senate Districts
Population % Change from 2010 to 2020
Ethnicity: Not Latino White alone



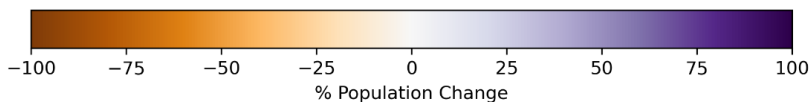
Map tiles by Stamen Design, CC BY 3.0 -- Map data (C)
OpenStreetMap/contributors,ors (C) CARTO



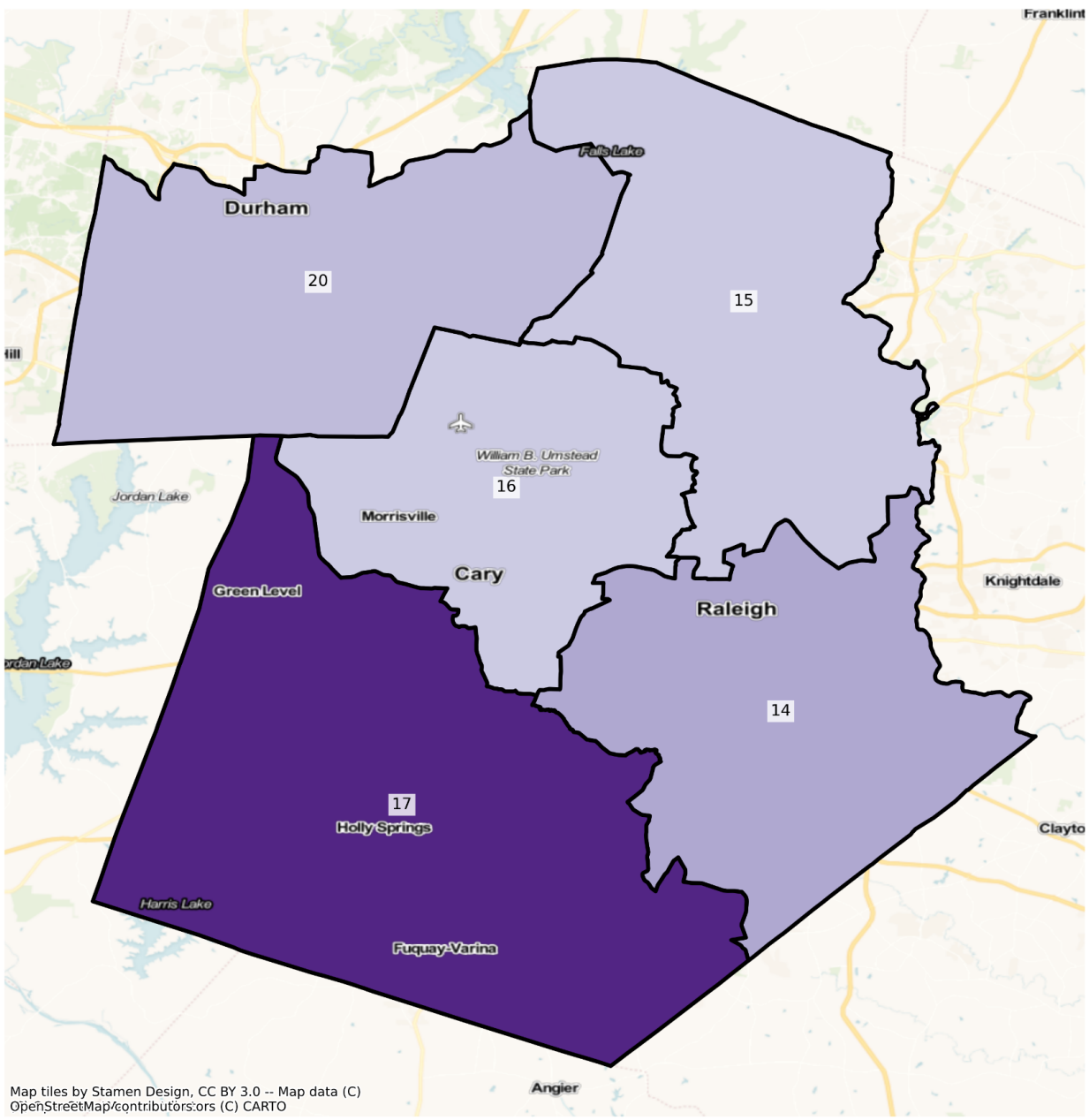
NC Raleigh State Senate Districts
Population % Change from 2010 to 2020
Ethnicity: Not Latino African American alone



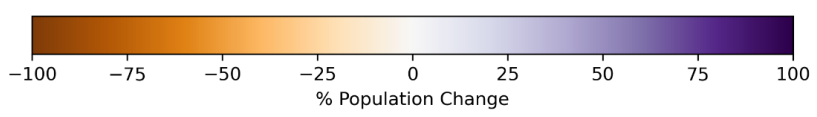
Map tiles by Stamen Design, CC BY 3.0 -- Map data (C)
OpenStreetMap/contributors,ors (C) CARTO



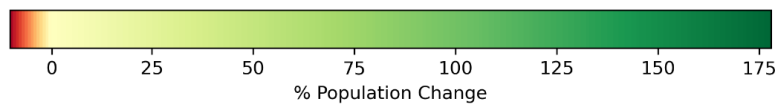
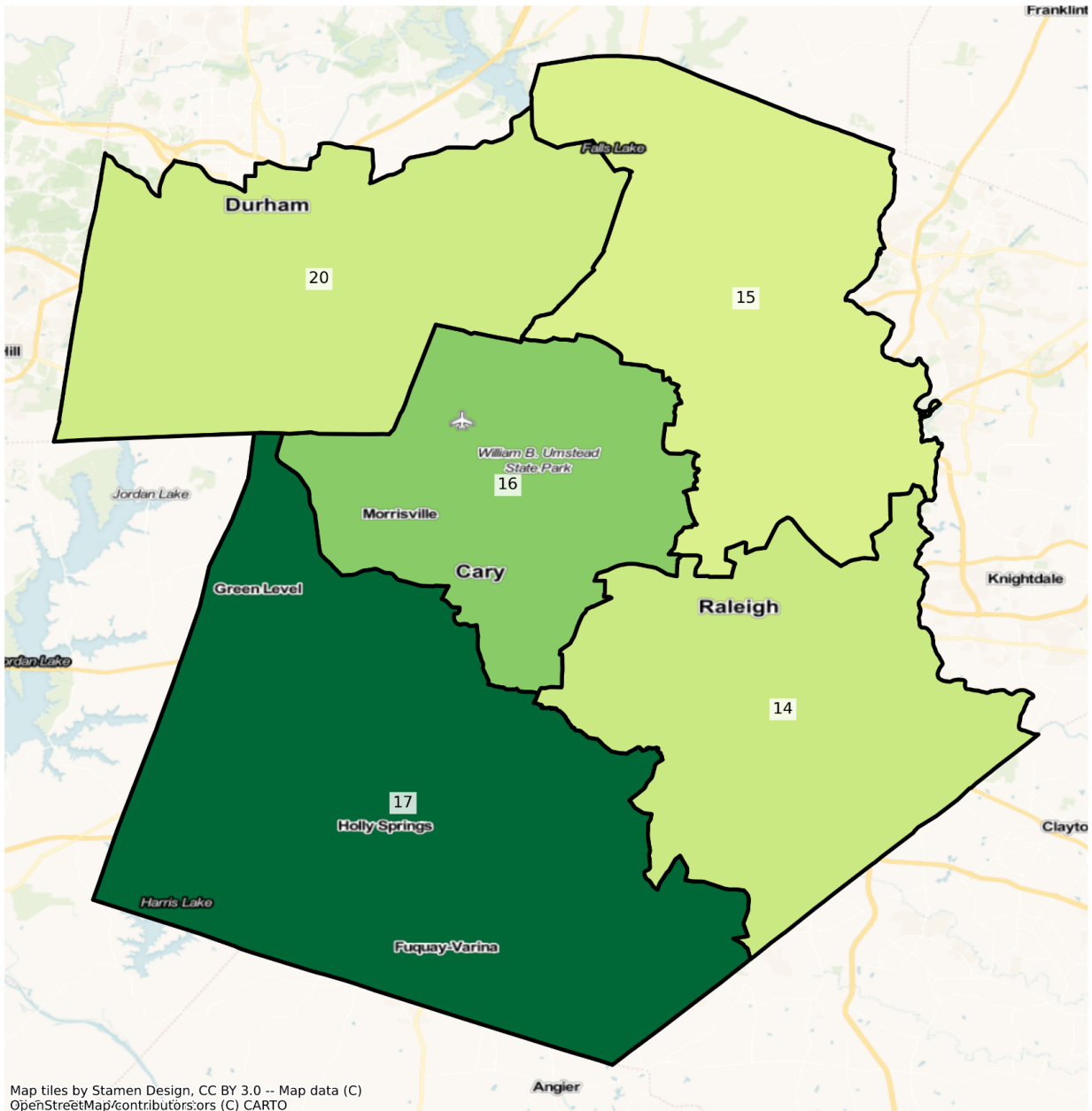
NC Raleigh State Senate Districts
Population % Change from 2010 to 2020
Ethnicity: Hispanic or Latino



Map tiles by Stamen Design, CC BY 3.0 -- Map data (C)
OpenStreetMap/contributors,ors (C) CARTO



NC Raleigh State Senate Districts
Population % Change from 2010 to 2020
Ethnicity: Not Latino Asian alone



2010 Population by Race and Ethnicity at State Senate District Level

DISTRICT	Total Population	Hispanic or Latino Origin	White Alone, not Latino	African American Alone, not Latino	AIAN Alone, not Latino ¹	Asian Alone, not Latino	NHPI Alone, not Latino ²	Other Alone, not Latino	Two or More, not Latino
1	196,526	7,458	127,973	55,956	817	1,311	52	207	2,752
2	183,118	8,925	137,354	29,472	775	2,682	179	228	3,503
3	181,778	8,245	87,572	81,919	1,467	618	18	148	1,791
4	192,877	10,985	83,101	93,143	2,326	1,134	37	202	1,949
5	189,520	12,256	106,085	64,716	572	2,628	73	301	2,889
6	187,902	18,294	128,753	29,853	1,063	3,195	440	302	6,002
7	182,144	16,080	98,728	62,079	497	1,661	73	297	2,729
8	199,397	11,606	147,903	34,320	1,648	840	50	230	2,800
9	198,108	10,355	152,352	28,678	755	2,364	107	341	3,156
10	181,478	28,665	110,087	38,248	1,565	637	85	180	2,011
11	190,494	19,844	112,974	52,692	896	1,331	31	269	2,457
12	186,695	24,714	118,935	36,068	1,330	1,522	144	301	3,681
13	192,258	13,594	71,228	49,934	52,647	1,114	86	211	3,444
14	198,654	24,007	87,923	75,651	642	6,529	75	383	3,444
15	192,285	21,423	123,107	37,002	427	6,604	57	352	3,313
16	187,230	16,465	123,460	23,888	483	18,526	61	430	3,917
17	199,914	13,184	149,480	18,528	573	13,849	88	371	3,841
18	183,529	17,619	115,044	43,719	665	3,051	41	286	3,104
19	183,321	14,331	98,609	56,703	3,611	3,486	442	333	5,806
20	184,237	26,198	69,640	74,279	526	9,644	77	489	3,384
21	183,536	21,715	71,621	72,695	5,372	3,871	760	428	7,074
22	182,730	15,954	103,961	56,034	690	2,972	84	318	2,717
23	197,380	19,251	139,920	23,994	546	9,694	50	445	3,480
24	197,106	18,882	133,640	38,367	778	2,230	73	288	2,848
25	197,963	9,568	124,779	52,806	5,766	1,712	51	232	3,049
26	186,410	19,805	135,462	23,050	946	4,386	43	253	2,465
27	199,843	11,618	130,534	45,133	685	7,944	51	426	3,452

28	197,930	15,858	82,515	86,396	878	7,711	101	507	3,964
29	190,676	14,334	151,361	19,451	736	2,396	29	236	2,133
30	198,458	9,378	155,578	29,264	615	847	63	173	2,540
31	192,050	23,035	121,896	41,278	544	2,104	44	336	2,813
32	199,837	21,236	119,275	50,804	456	4,551	118	399	2,998
33	199,042	12,810	151,887	28,748	551	2,461	54	195	2,336
34	197,800	14,593	157,088	19,912	482	2,970	41	189	2,525
35	189,794	20,667	139,589	22,718	593	3,081	53	398	2,695
36	189,509	17,067	138,035	27,076	509	3,622	65	307	2,828
37	183,991	14,532	132,451	25,899	438	6,975	92	669	2,935
38	182,531	16,051	58,863	93,342	649	9,759	95	419	3,353
39	181,402	28,787	99,843	36,098	475	12,467	71	504	3,157
40	183,115	38,512	60,393	73,190	731	6,119	175	460	3,535
41	188,589	14,062	113,822	49,513	550	6,671	85	355	3,531
42	191,556	14,633	153,059	14,882	426	5,668	45	223	2,620
43	197,035	11,902	148,675	30,158	672	2,368	44	266	2,950
44	185,394	8,293	147,567	25,350	450	1,244	35	170	2,285
45	198,876	12,734	177,915	4,719	374	1,020	36	161	1,917
46	191,738	9,227	165,066	10,684	432	3,640	183	176	2,330
47	187,476	7,779	166,204	9,792	449	843	17	136	2,256
48	185,173	13,026	161,445	5,638	571	1,398	186	189	2,720
49	192,978	12,616	159,952	13,769	618	2,127	258	284	3,354
50	194,100	7,947	171,291	2,246	8,562	1,002	41	85	2,926

¹American Indian and Alaska Native Alone, Not Latino

²Native Hawaiian and Pacific Islander Alone, Not Latino

2020 Population by Race and Ethnicity at State Senate District Level

DISTRICT	Total Population	Hispanic or Latino Origin	White Alone, not Latino	African American Alone, not Latino	AIAN Alone, not Latino ¹	Asian Alone, not Latino	NHPI Alone, not Latino ²	Other Alone, not Latino	Two or More, not Latino
1	193,394	9,957	125,966	47,063	744	1,397	87	731	7,449

2	180,699	10,817	131,580	25,168	628	3,693	218	749	7,846
3	163,010	9,468	77,500	69,282	1,285	698	34	487	4,256
4	176,679	13,184	72,554	82,186	1,979	1,293	30	536	4,917
5	190,778	15,898	96,554	67,038	588	3,096	94	830	6,680
6	213,710	28,021	135,264	29,507	1,061	4,540	776	1,183	13,358
7	172,424	19,283	86,772	57,348	470	1,872	93	590	5,996
8	231,064	15,490	174,103	28,986	1,736	1,282	116	684	8,667
9	221,193	16,763	163,994	26,441	627	3,442	138	985	8,803
10	181,908	32,790	105,441	34,813	1,503	1,011	57	581	5,712
11	218,371	29,179	118,903	58,694	1,034	2,013	62	958	7,528
12	214,521	34,730	126,584	38,947	1,308	2,127	284	977	9,564
13	167,160	14,391	59,193	40,745	45,147	1,054	73	554	6,003
14	225,103	33,819	98,070	73,184	721	9,512	108	1,314	8,375
15	214,206	27,121	130,522	38,193	438	8,819	66	1,045	8,002
16	227,924	20,755	132,725	28,380	495	34,606	100	1,433	9,430
17	290,116	23,842	189,784	23,283	611	38,487	100	1,463	12,546
18	241,143	29,755	136,430	57,381	757	5,759	97	1,230	9,734
19	193,279	19,243	88,227	63,496	3,589	4,744	536	1,274	12,170
20	228,967	34,992	89,484	80,058	483	13,773	47	1,272	8,858
21	194,131	27,999	65,036	77,147	4,886	4,916	1,013	1,277	11,857
22	195,601	23,467	102,871	57,267	663	3,365	68	870	7,030
23	225,192	26,214	149,754	23,378	511	14,229	67	1,107	9,932
24	228,720	28,771	134,945	50,542	811	3,759	105	1,040	8,747
25	198,863	12,211	123,798	46,257	5,472	2,158	85	668	8,214
26	189,222	25,765	125,595	23,691	864	6,046	22	655	6,584
27	226,571	17,763	129,037	54,846	745	14,349	84	1,236	8,511
28	212,198	23,578	76,806	92,456	746	9,534	101	1,092	7,885
29	194,632	17,818	145,986	20,010	740	2,825	45	535	6,673
30	191,090	11,610	144,458	26,708	551	934	57	483	6,289
31	207,606	31,670	120,045	44,035	588	2,675	51	790	7,752
32	217,715	26,398	122,878	52,129	486	6,785	187	962	7,890

33	209,287	19,016	148,734	29,710	652	2,640	80	664	7,791
34	223,875	20,146	166,740	22,328	501	4,862	58	742	8,498
35	226,519	29,518	151,116	26,017	621	9,285	89	1,167	8,706
36	237,583	27,869	143,805	42,154	619	12,161	122	1,139	9,714
37	204,926	20,157	137,157	27,734	390	10,275	76	1,373	7,764
38	231,742	27,736	77,708	101,599	793	15,034	102	1,143	7,627
39	233,010	43,650	105,333	47,907	499	25,231	121	1,513	8,756
40	209,608	52,373	57,982	79,213	548	10,962	147	1,559	6,824
41	236,256	26,010	120,525	68,404	500	10,086	86	1,303	9,342
42	196,413	19,119	146,630	14,488	488	7,291	78	618	7,701
43	217,847	19,523	145,717	38,739	718	3,390	58	824	8,878
44	196,936	11,058	150,093	25,507	496	1,686	39	555	7,502
45	196,180	16,426	165,715	5,646	317	1,527	41	702	5,806
46	186,134	13,114	152,123	9,268	492	3,748	81	525	6,783
47	182,879	9,715	155,882	8,583	482	967	32	523	6,695
48	198,027	19,366	162,232	5,661	537	1,785	285	750	7,411
49	220,725	19,262	172,938	13,681	576	2,958	446	1,147	9,717
50	204,222	11,767	170,856	2,225	9,385	1,378	38	501	8,072

¹American Indian and Alaska Native Alone, Not Latino

²Native Hawaiian and Pacific Islander Alone, Not Latino

Percent Change in Population from 2010 to 2020 by Race and Ethnicity at State Senate District Level

DISTRICT	Total Population	Hispanic or Latino Origin	White Alone, not Latino	African American Alone, not Latino	AIAN Alone, not Latino ¹	Asian Alone, not Latino	NHPI Alone, not Latino ²	Other Alone, not Latino	Two or More, not Latino
1	-1.59%	33.51%	-1.57%	-15.89%	-8.94%	6.56%	67.31%	253.14%	170.68%
2	-1.32%	21.20%	-4.20%	-14.60%	-18.97%	37.70%	21.79%	228.51%	123.98%
3	-10.32%	14.83%	-11.50%	-15.43%	-12.41%	12.94%	88.89%	229.05%	137.63%
4	-8.40%	20.02%	-12.69%	-11.76%	-14.92%	14.02%	-18.92%	165.35%	152.28%
5	0.66%	29.72%	-8.98%	3.59%	2.80%	17.81%	28.77%	175.75%	131.22%
6	13.73%	53.17%	5.06%	-1.16%	-0.19%	42.10%	76.36%	291.72%	122.56%

7	-5.34%	19.92%	-12.11%	-7.62%	-5.43%	12.70%	27.40%	98.65%	119.71%
8	15.88%	33.47%	17.71%	-15.54%	5.34%	52.62%	132.00%	197.39%	209.54%
9	11.65%	61.88%	7.64%	-7.80%	-16.95%	45.60%	28.97%	188.86%	178.93%
10	0.24%	14.39%	-4.22%	-8.98%	-3.96%	58.71%	-32.94%	222.78%	184.04%
11	14.63%	47.04%	5.25%	11.39%	15.40%	51.24%	100.00%	256.13%	206.39%
12	14.90%	40.53%	6.43%	7.98%	-1.65%	39.75%	97.22%	224.58%	159.82%
13	-13.05%	5.86%	-16.90%	-18.40%	-14.25%	-5.39%	-15.12%	162.56%	74.30%
14	13.31%	40.87%	11.54%	-3.26%	12.31%	45.69%	44.00%	243.08%	143.18%
15	11.40%	26.60%	6.02%	3.22%	2.58%	33.54%	15.79%	196.88%	141.53%
16	21.73%	26.06%	7.50%	18.80%	2.48%	86.80%	63.93%	233.26%	140.75%
17	45.12%	80.84%	26.96%	25.66%	6.63%	177.90%	13.64%	294.34%	226.63%
18	31.39%	68.88%	18.59%	31.25%	13.83%	88.76%	136.59%	330.07%	213.60%
19	5.43%	34.28%	-10.53%	11.98%	-0.61%	36.09%	21.27%	282.58%	109.61%
20	24.28%	33.57%	28.50%	7.78%	-8.17%	42.81%	-38.96%	160.12%	161.76%
21	5.77%	28.94%	-9.19%	6.12%	-9.05%	27.00%	33.29%	198.36%	67.61%
22	7.04%	47.09%	-1.05%	2.20%	-3.91%	13.22%	-19.05%	173.58%	158.74%
23	14.09%	36.17%	7.03%	-2.57%	-6.41%	46.78%	34.00%	148.76%	185.40%
24	16.04%	52.37%	0.98%	31.73%	4.24%	68.57%	43.84%	261.11%	207.13%
25	0.45%	27.62%	-0.79%	-12.40%	-5.10%	26.05%	66.67%	187.93%	169.40%
26	1.51%	30.09%	-7.28%	2.78%	-8.67%	37.85%	-48.84%	158.89%	167.10%
27	13.37%	52.89%	-1.15%	21.52%	8.76%	80.63%	64.71%	190.14%	146.55%
28	7.21%	48.68%	-6.92%	7.01%	-15.03%	23.64%	0.00%	115.38%	98.92%
29	2.07%	24.31%	-3.55%	2.87%	0.54%	17.90%	55.17%	126.69%	212.85%
30	-3.71%	23.80%	-7.15%	-8.73%	-10.41%	10.27%	-9.52%	179.19%	147.60%
31	8.10%	37.49%	-1.52%	6.68%	8.09%	27.14%	15.91%	135.12%	175.58%
32	8.95%	24.31%	3.02%	2.61%	6.58%	49.09%	58.47%	141.10%	163.18%
33	5.15%	48.45%	-2.08%	3.35%	18.33%	7.27%	48.15%	240.51%	233.52%
34	13.18%	38.05%	6.14%	12.13%	3.94%	63.70%	41.46%	292.59%	236.55%
35	19.35%	42.83%	8.26%	14.52%	4.72%	201.36%	67.92%	193.22%	223.04%
36	25.37%	63.29%	4.18%	55.69%	21.61%	235.75%	87.69%	271.01%	243.49%
37	11.38%	38.71%	3.55%	7.09%	-10.96%	47.31%	-17.39%	105.23%	164.53%

38	26.96%	72.80%	32.02%	8.85%	22.19%	54.05%	7.37%	172.79%	127.47%
39	28.45%	51.63%	5.50%	32.71%	5.05%	102.38%	70.42%	200.20%	177.35%
40	14.47%	35.99%	-3.99%	8.23%	-25.03%	79.15%	-16.00%	238.91%	93.04%
41	25.28%	84.97%	5.89%	38.15%	-9.09%	51.19%	1.18%	267.04%	164.57%
42	2.54%	30.66%	-4.20%	-2.65%	14.55%	28.63%	73.33%	177.13%	193.93%
43	10.56%	64.03%	-1.99%	28.45%	6.85%	43.16%	31.82%	209.77%	200.95%
44	6.23%	33.34%	1.71%	0.62%	10.22%	35.53%	11.43%	226.47%	228.32%
45	-1.36%	28.99%	-6.86%	19.64%	-15.24%	49.71%	13.89%	336.02%	202.87%
46	-2.92%	42.13%	-7.84%	-13.25%	13.89%	2.97%	-55.74%	198.30%	191.12%
47	-2.45%	24.89%	-6.21%	-12.35%	7.35%	14.71%	88.24%	284.56%	196.76%
48	6.94%	48.67%	0.49%	0.41%	-5.95%	27.68%	53.23%	296.83%	172.46%
49	14.38%	52.68%	8.12%	-0.64%	-6.80%	39.07%	72.87%	303.87%	189.71%
50	5.21%	48.07%	-0.25%	-0.93%	9.61%	37.52%	-7.32%	489.41%	175.87%

¹American Indian and Alaska Native Alone, Not Latino

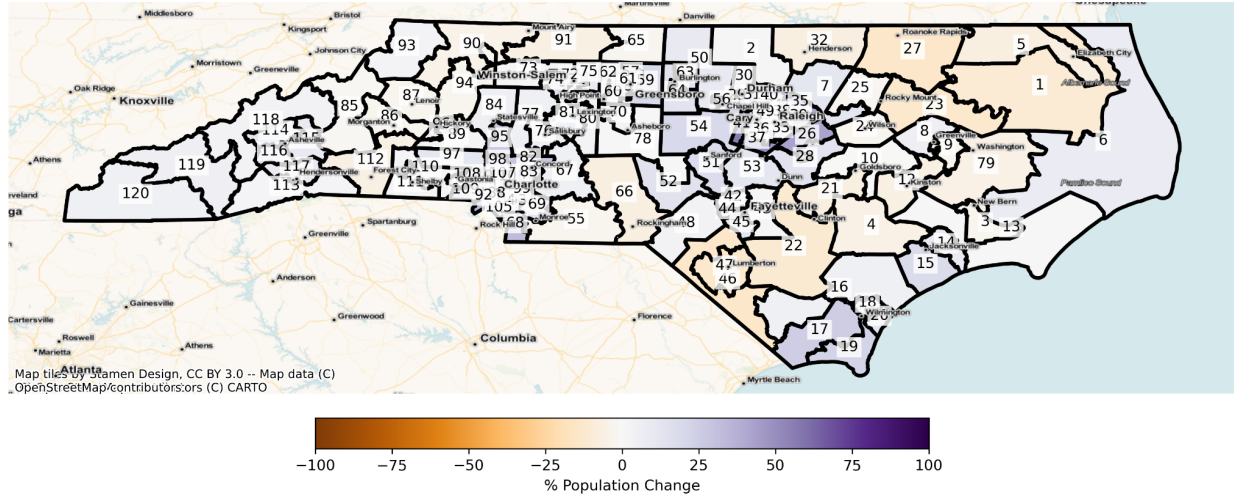
²Native Hawaiian and Pacific Islander Alone, Not Latino

State House

The charts below display the percent change in population from 2010 to 2020 for the listed group. Please note that the color bars are fixed to be from -100% to 100% and these maps are displayed in brown to purple. If the percent change in population was outside of this range, the color scheme changes to red to green to indicate a change.

Total Population

NC State House Districts
Population % Change from 2010 to 2020
Total Population



Total Population from 2010 to 2020 at State House District Level

DISTRICT	Total Population 2010	Total Population 2020	Total Population % Change
1	77,072	69,211	-10.20%
2	82,674	83,769	1.32%
3	75,726	73,887	-2.43%
4	78,676	74,527	-5.27%
5	77,388	72,474	-6.35%
6	76,421	81,880	7.14%
7	75,568	84,336	11.60%
8	75,724	80,097	5.77%
9	75,594	73,320	-3.01%
10	83,456	82,933	-0.63%
11	82,341	90,800	10.27%
12	76,315	71,998	-5.66%
13	76,622	76,851	0.30%
14	79,512	86,538	8.84%
15	78,030	92,260	18.24%
16	82,566	86,643	4.94%

17	78,689	98,561	25.25%
18	77,812	83,686	7.55%
19	77,192	94,366	22.25%
20	76,405	85,727	12.20%
21	83,470	77,788	-6.81%
22	83,430	74,158	-11.11%
23	81,071	70,931	-12.51%
24	81,234	78,784	-3.02%
25	80,891	79,179	-2.12%
26	83,432	118,828	42.42%
27	76,986	66,336	-13.83%
28	83,431	94,587	13.37%
29	82,735	93,626	13.16%
30	83,272	97,126	16.64%
31	82,773	111,133	34.26%
32	83,100	77,488	-6.75%
33	83,342	94,620	13.53%
34	82,825	89,516	8.08%
35	76,950	107,662	39.91%
36	83,373	96,673	15.95%
37	83,358	124,178	48.97%
38	82,856	93,793	13.20%
39	83,252	106,498	27.92%
40	76,609	98,655	28.78%
41	82,826	130,061	57.03%
42	80,970	85,537	5.64%
43	78,228	79,333	1.41%
44	83,254	83,353	0.12%
45	77,431	86,994	12.35%
46	80,990	70,145	-13.39%
47	80,942	70,628	-12.74%

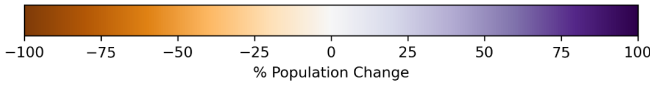
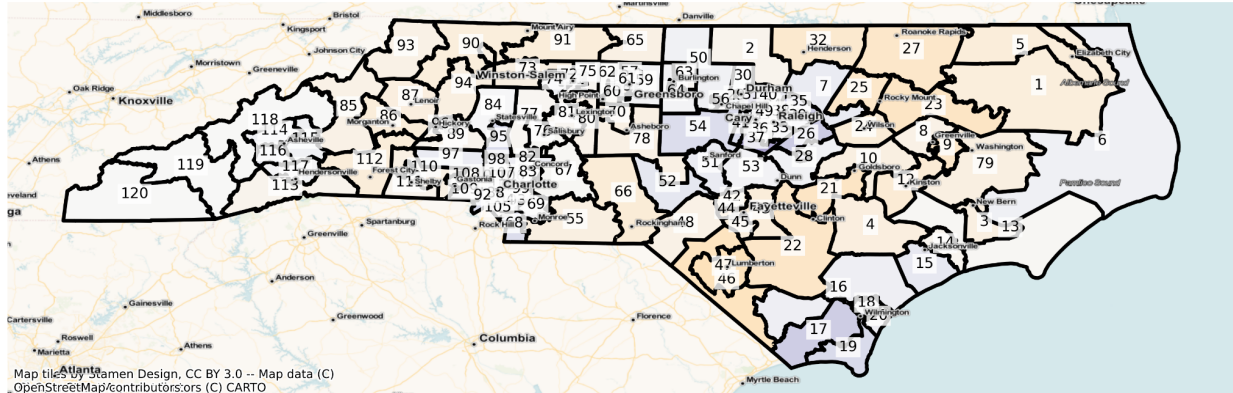
48	83,131	86,362	3.89%
49	83,261	97,463	17.06%
50	80,652	88,487	9.71%
51	83,360	97,727	17.23%
52	76,872	88,110	14.62%
53	82,977	92,505	11.48%
54	82,386	98,935	20.09%
55	76,304	73,976	-3.05%
56	76,868	83,082	8.08%
57	83,303	90,260	8.35%
58	80,613	87,463	8.50%
59	79,752	95,086	19.23%
60	82,878	88,810	7.16%
61	79,765	87,243	9.38%
62	82,095	92,472	12.64%
63	75,592	85,328	12.88%
64	75,539	85,922	13.75%
65	83,430	81,569	-2.23%
66	83,021	77,747	-6.35%
67	82,822	87,046	5.10%
68	76,114	101,149	32.89%
69	75,829	85,197	12.35%
70	76,125	78,503	3.12%
71	76,107	81,664	7.30%
72	80,144	85,031	6.10%
73	76,243	77,018	1.02%
74	78,989	91,793	16.21%
75	77,550	84,293	8.70%
76	82,663	87,774	6.18%
77	83,117	87,357	5.10%
78	76,980	77,212	0.30%

79	75,538	71,425	-5.44%
80	81,522	83,751	2.73%
81	81,356	85,143	4.65%
82	79,549	102,167	28.43%
83	81,522	104,423	28.09%
84	77,273	81,728	5.77%
85	78,344	77,278	-1.36%
86	79,175	77,049	-2.69%
87	83,026	80,634	-2.88%
88	76,454	99,605	30.28%
89	77,788	79,484	2.18%
90	82,774	79,338	-4.15%
91	82,886	78,299	-5.53%
92	76,129	103,229	35.60%
93	78,365	80,688	2.96%
94	83,358	81,106	-2.70%
95	82,164	104,956	27.74%
96	76,570	80,481	5.11%
97	78,265	87,304	11.55%
98	80,131	104,768	30.75%
99	75,969	90,749	19.46%
100	76,143	82,510	8.36%
101	76,212	89,013	16.80%
102	76,395	90,638	18.64%
103	77,930	87,202	11.90%
104	75,768	82,274	8.59%
105	76,254	92,400	21.17%
106	76,481	99,617	30.25%
107	75,762	93,537	23.46%
108	76,067	83,929	10.34%
109	76,123	88,771	16.62%

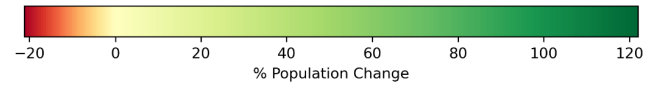
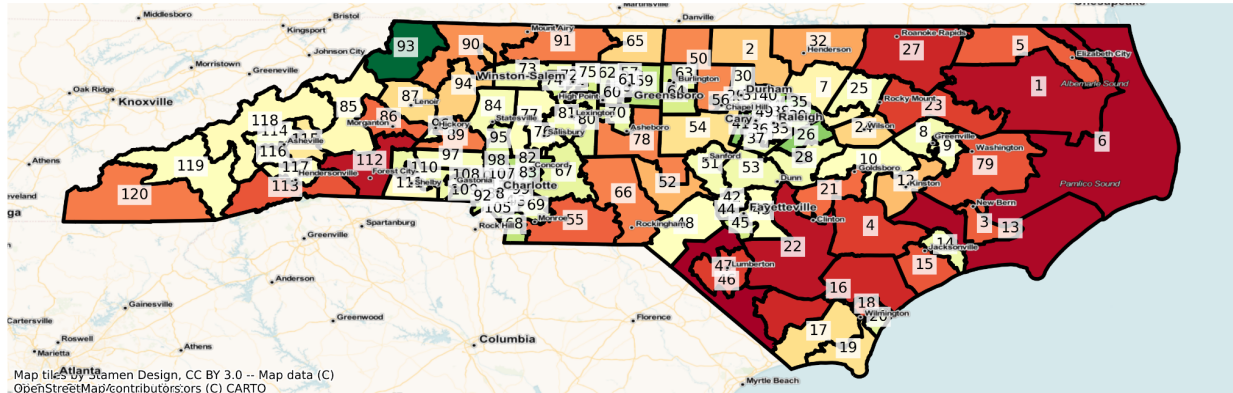
110	75,864	77,179	1.73%
111	76,110	77,600	1.96%
112	79,547	75,117	-5.57%
113	81,120	82,473	1.67%
114	80,056	89,377	11.64%
115	77,363	84,760	9.56%
116	80,900	95,241	17.73%
117	79,222	86,217	8.83%
118	76,352	79,222	3.76%
119	75,546	79,736	5.55%
120	80,814	84,883	5.04%

Population by Race and Ethnicity

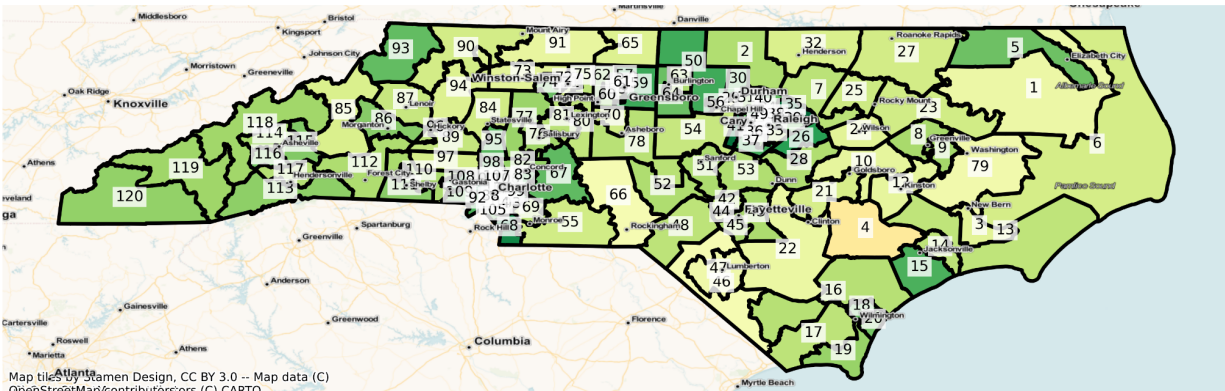
NC State House Districts
Population % Change from 2010 to 2020
Ethnicity: Not Latino White alone



NC State House Districts
Population % Change from 2010 to 2020
Ethnicity: Not Latino African American alone



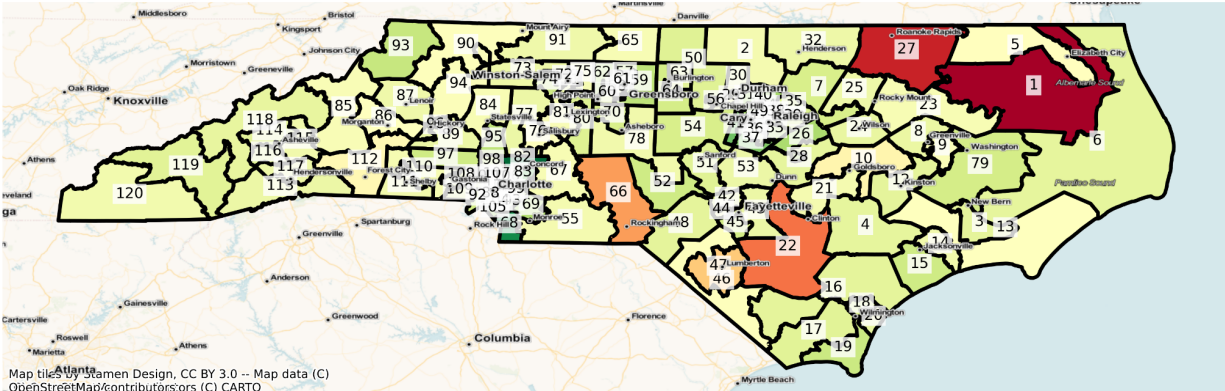
NC State House Districts Population % Change from 2010 to 2020 Ethnicity: Hispanic or Latino



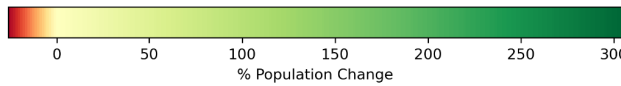
Map tiles by Stamen Design, CC BY 3.0 -- Map data (C) OpenStreetMap/contributors,ors (C) CARTO



NC State House Districts Population % Change from 2010 to 2020 Ethnicity: Not Latino Asian alone

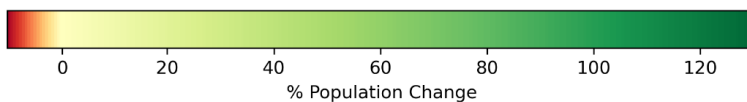
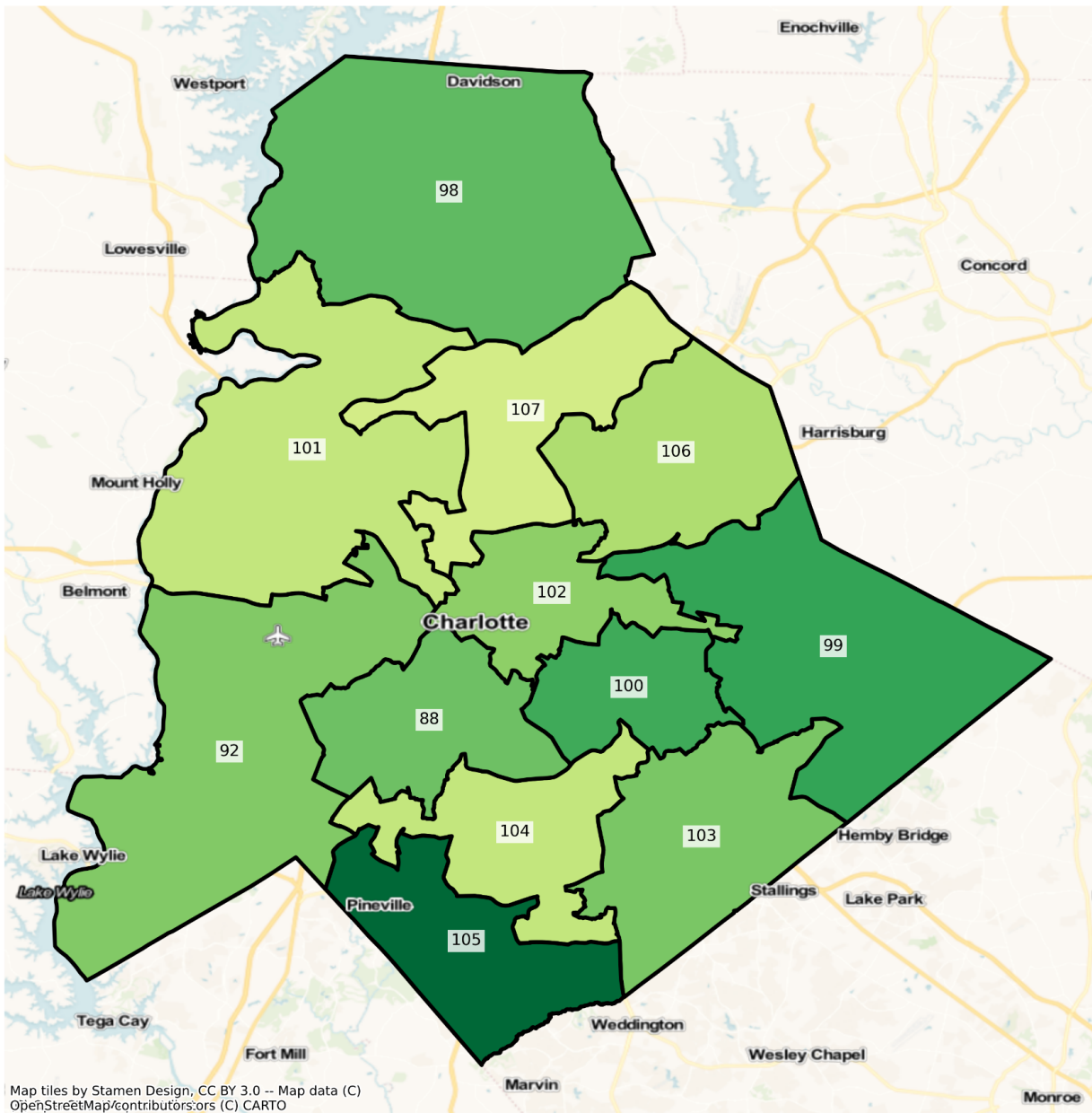


Map tiles by Stamen Design, CC BY 3.0 -- Map data (C) OpenStreetMap/contributors,ors (C) CARTO

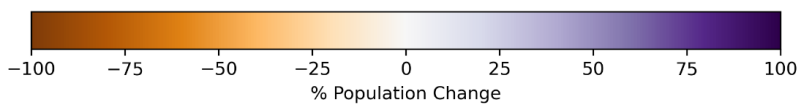
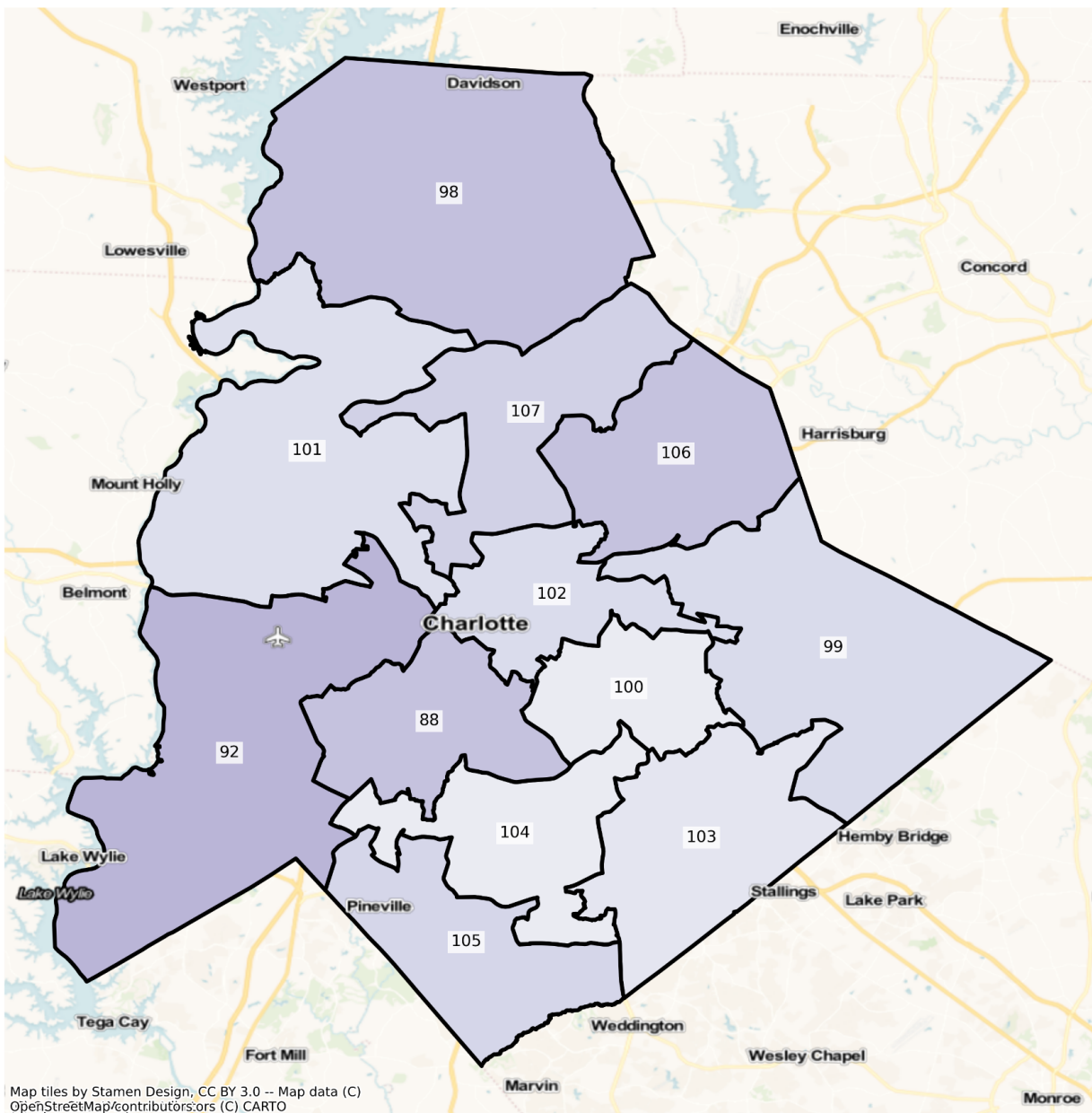


Charlotte

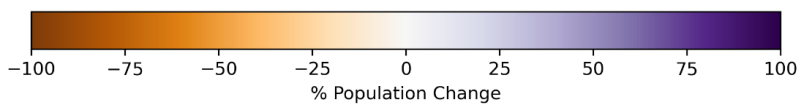
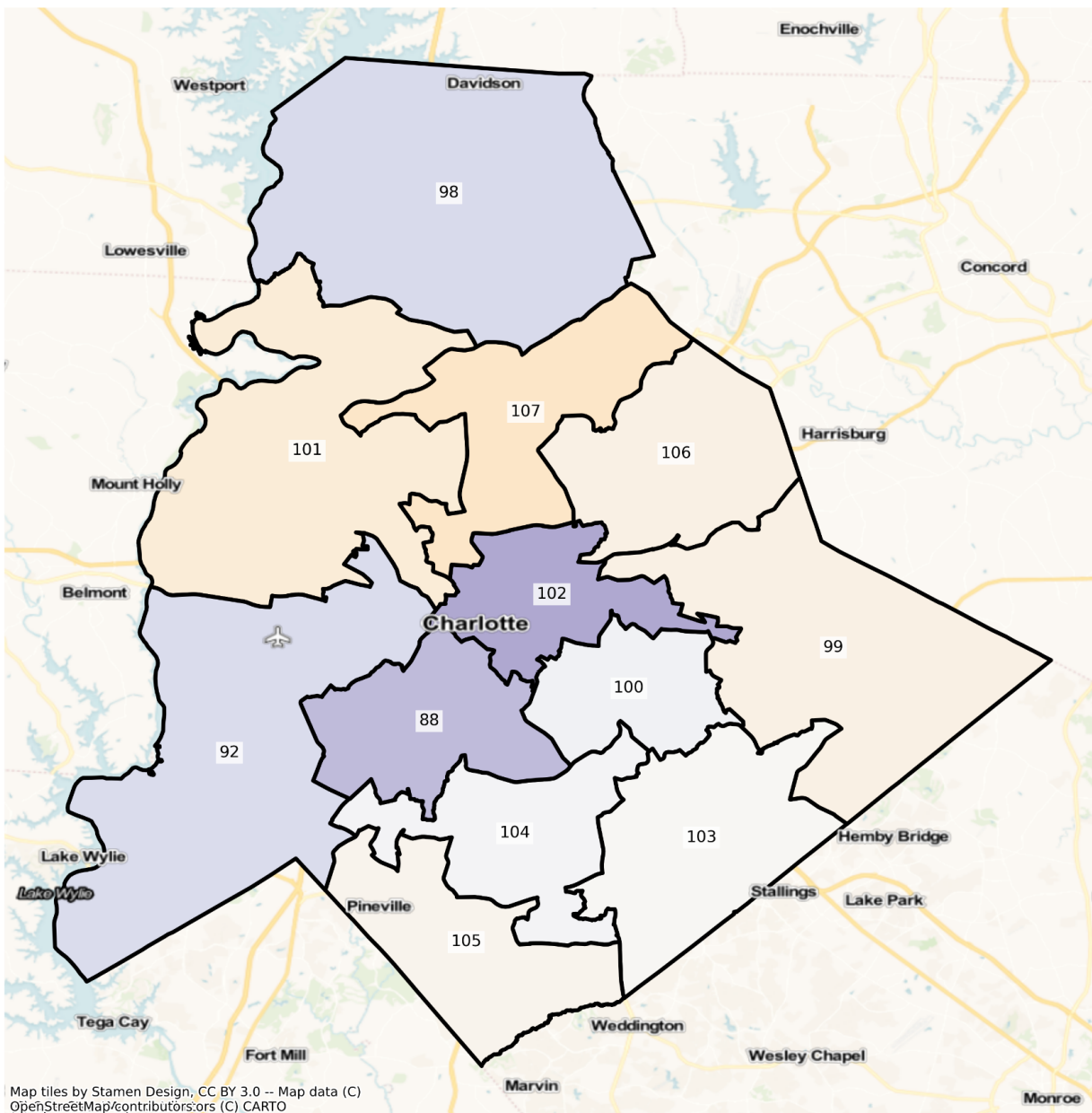
NC Charlotte State House Districts
Population % Change from 2010 to 2020
Ethnicity: Not Latino Asian alone



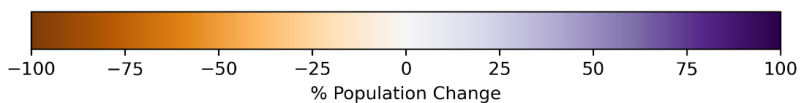
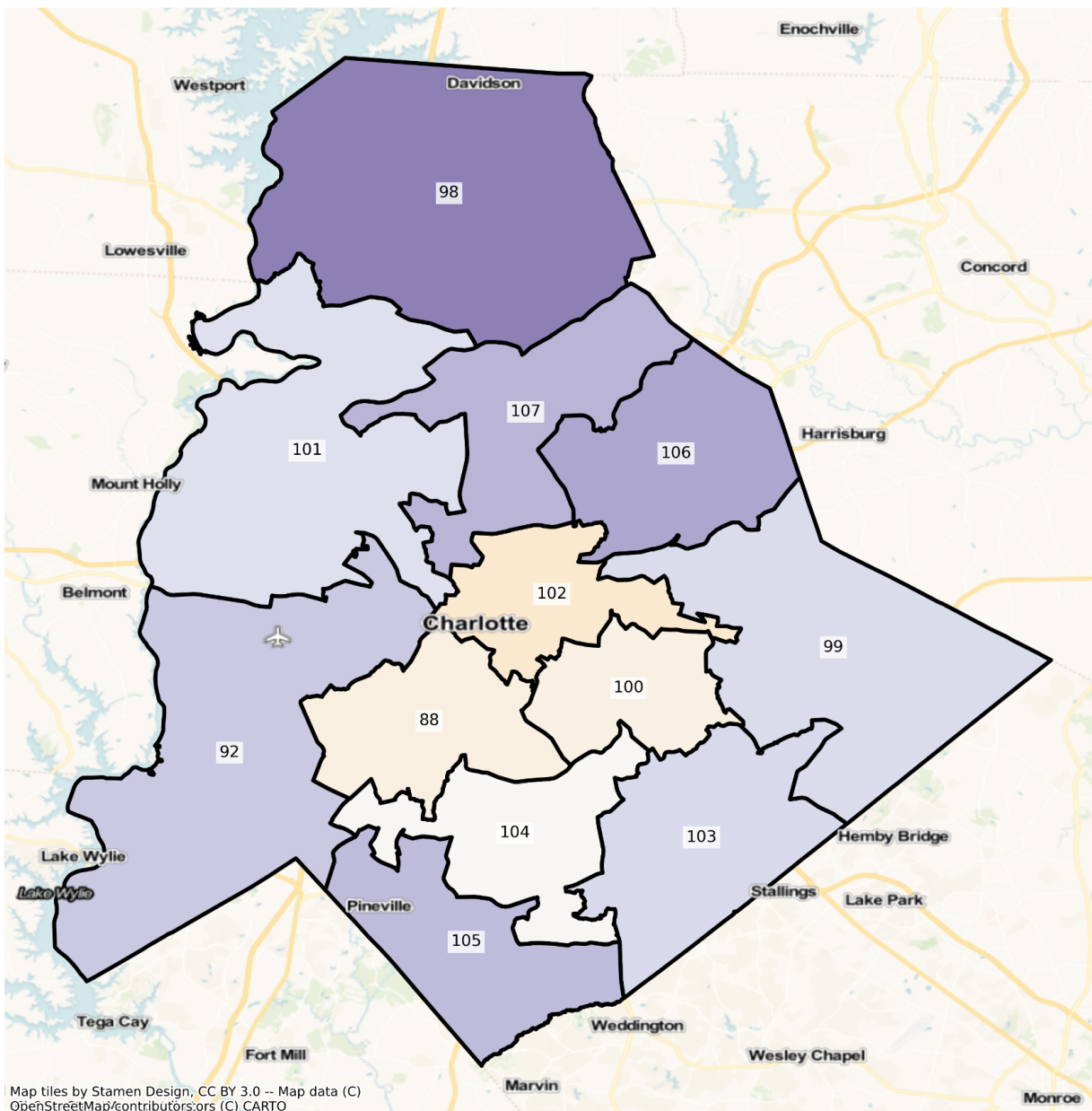
NC Charlotte State House Districts Population % Change from 2010 to 2020 Total Population



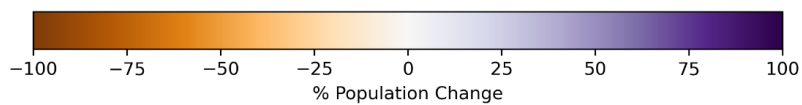
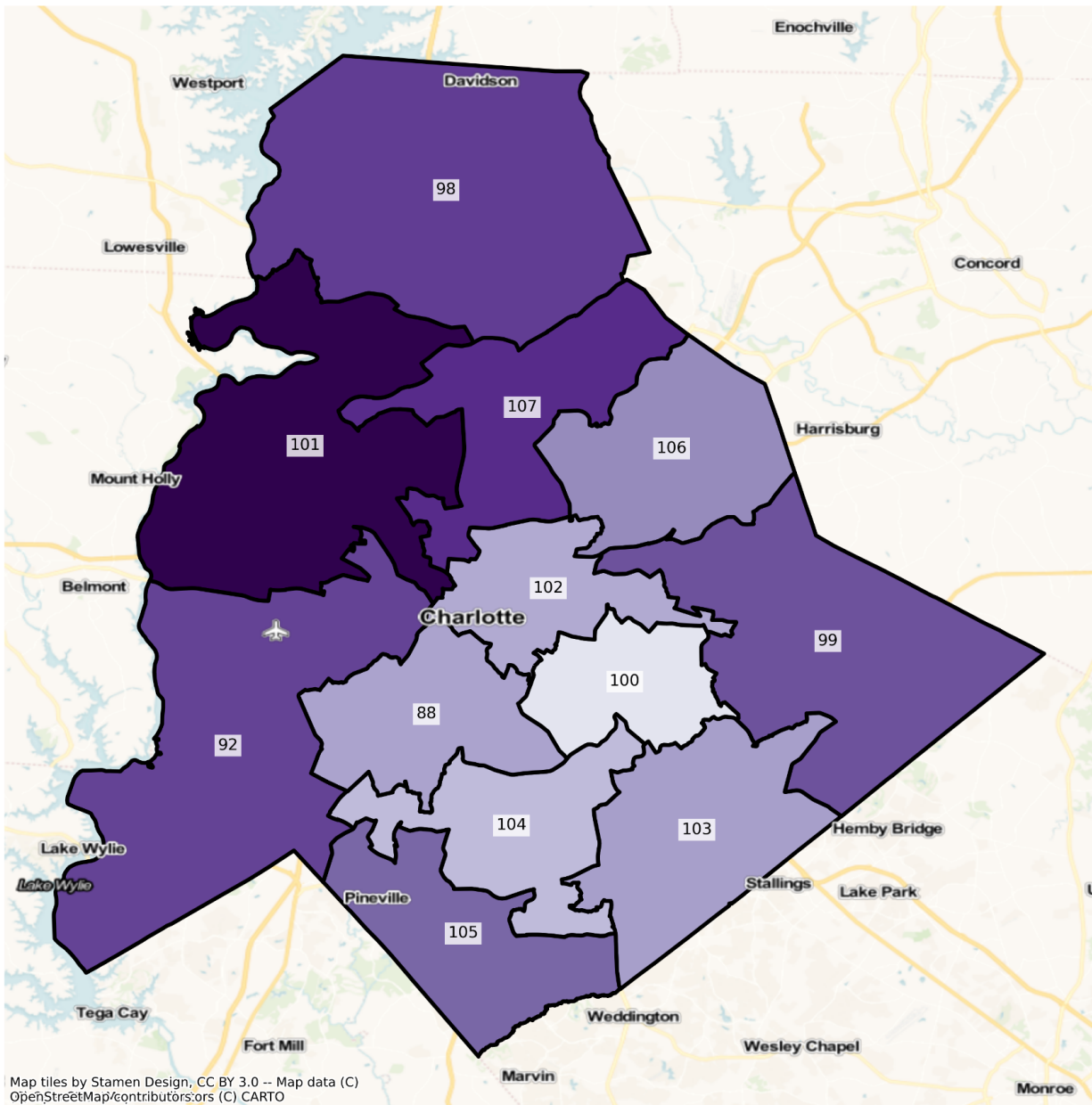
NC Charlotte State House Districts
Population % Change from 2010 to 2020
Ethnicity: Not Latino White alone



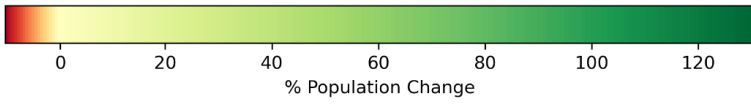
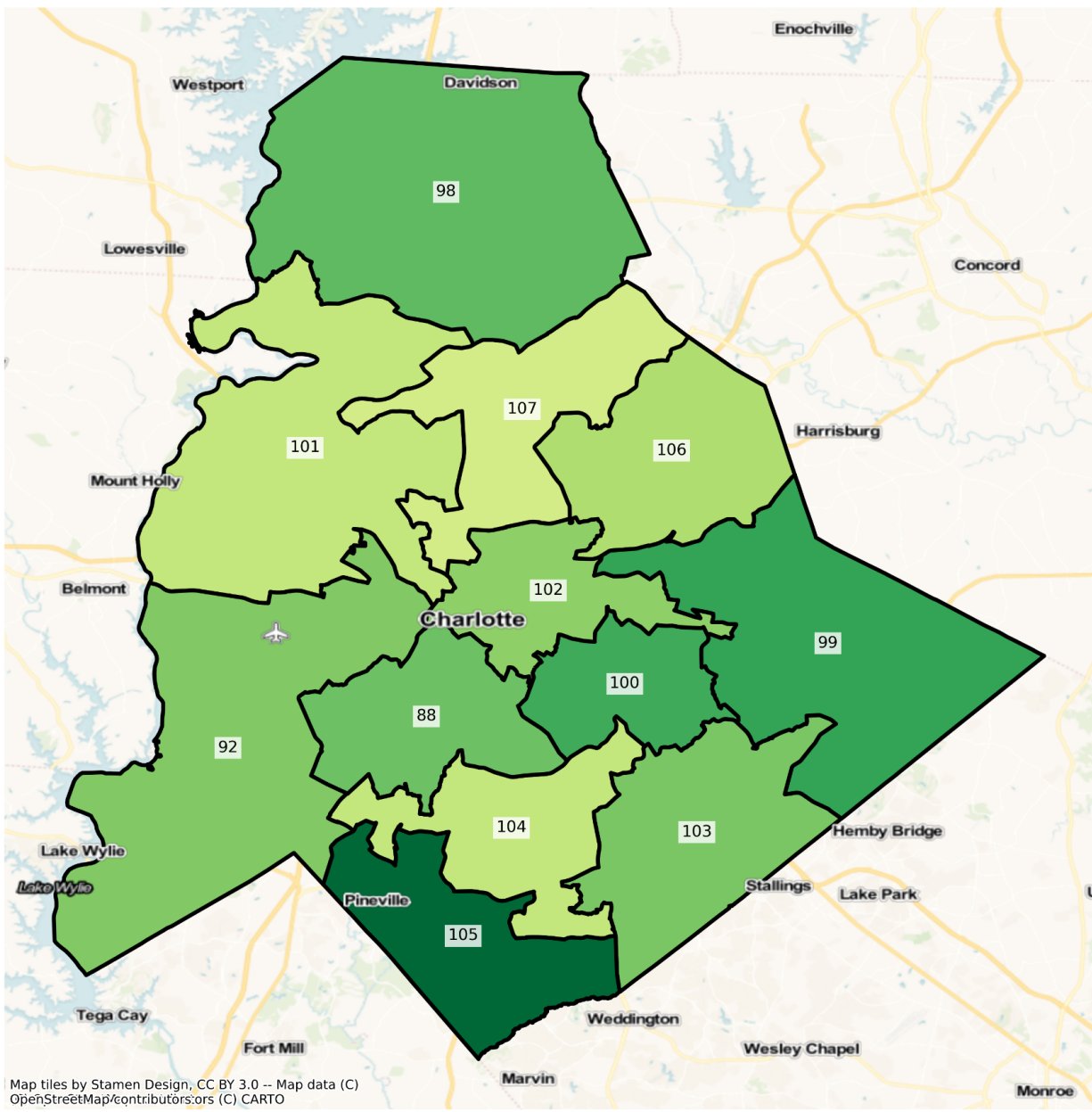
NC Charlotte State House Districts
Population % Change from 2010 to 2020
Ethnicity: Not Latino African American alone



NC Charlotte State House Districts Population % Change from 2010 to 2020 Ethnicity: Hispanic or Latino

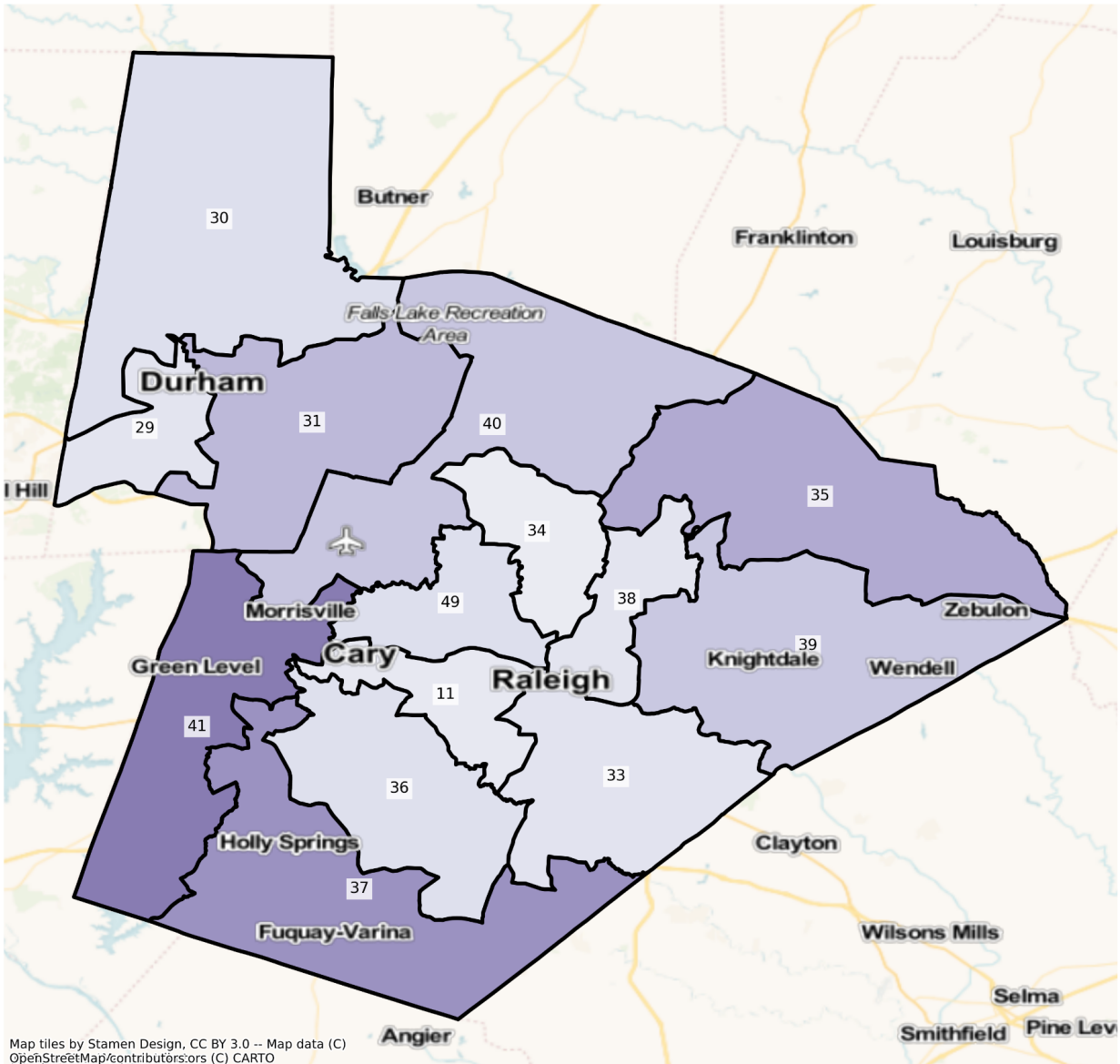


NC Charlotte State House Districts
Population % Change from 2010 to 2020
Ethnicity: Not Latino Asian alone

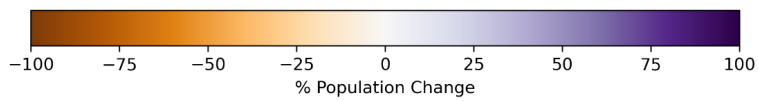


Raleigh

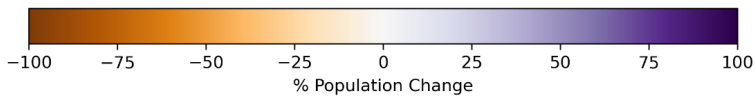
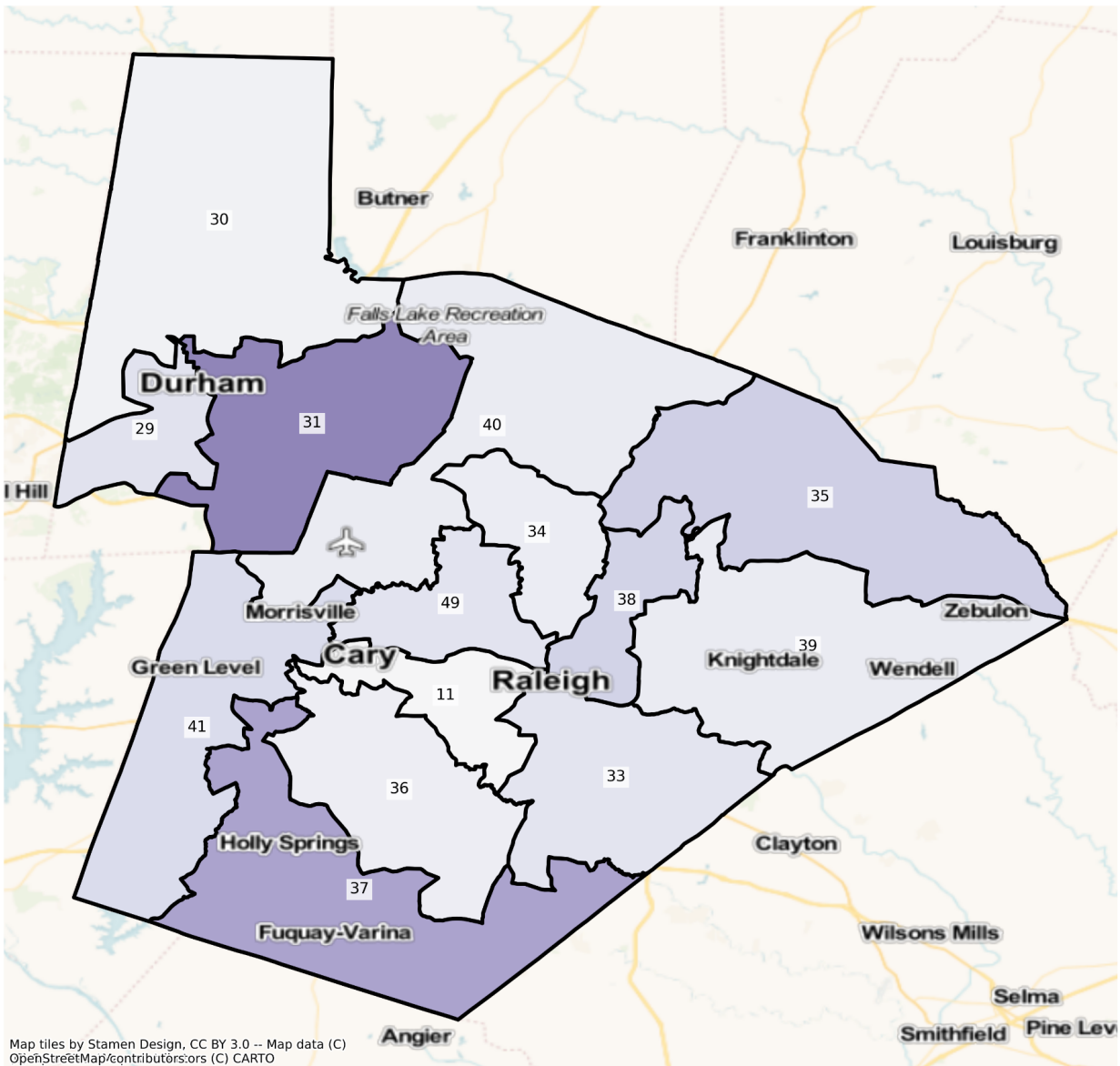
NC Raleigh State House Districts
Population % Change from 2010 to 2020
Total Population



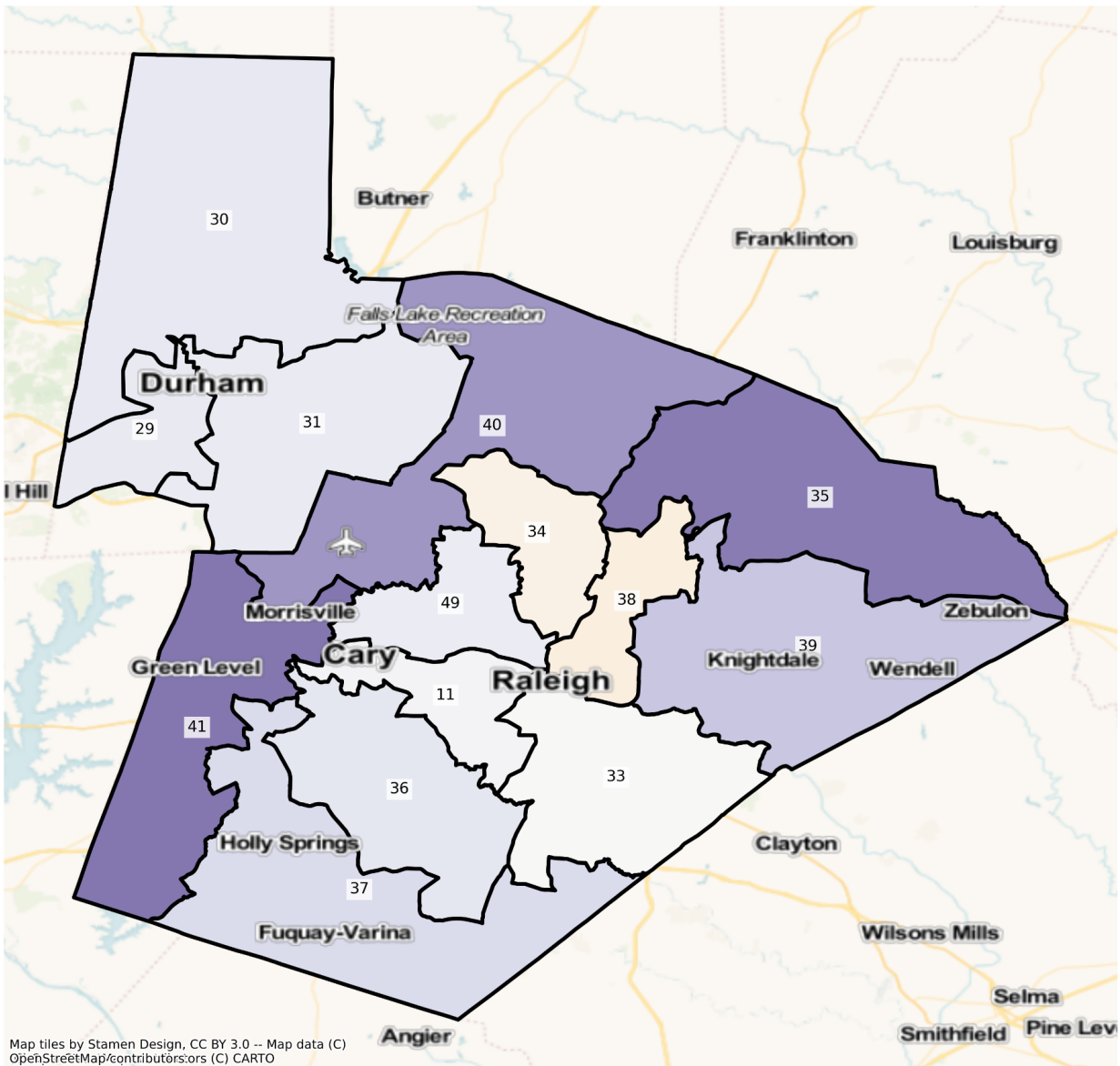
Map tiles by Stamen Design, CC BY 3.0 -- Map data (C) OpenStreetMap/contributors,ors (C) CARTO



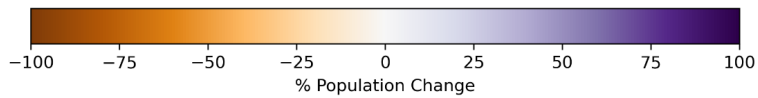
NC Raleigh State House Districts
Population % Change from 2010 to 2020
Ethnicity: Not Latino White alone



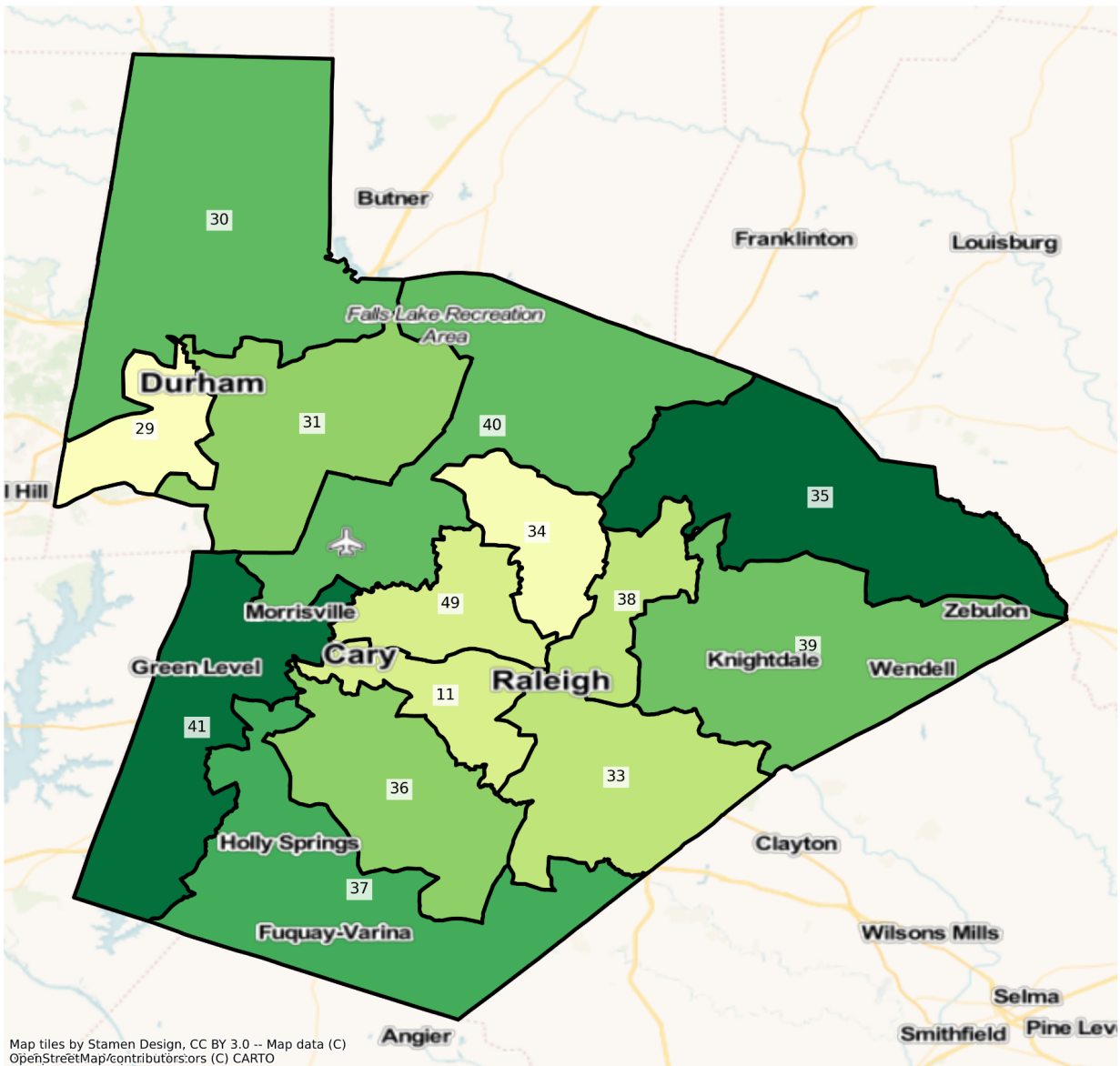
NC Raleigh State House Districts
Population % Change from 2010 to 2020
Ethnicity: Not Latino African American alone



Map tiles by Stamen Design, CC BY 3.0 -- Map data (C) OpenStreetMap/contributors,ors (C) CARTO



NC Raleigh State House Districts
Population % Change from 2010 to 2020
Ethnicity: Hispanic or Latino



1	77,072	1,941	42,480	31,118	225	453	9	32	814
2	82,674	5,304	53,223	22,156	466	336	19	96	1,074
3	75,726	4,825	50,501	16,162	295	1,928	101	94	1,820
4	78,676	13,674	46,359	16,972	260	298	48	73	992
5	77,388	2,459	38,501	34,038	454	593	22	125	1,196
6	76,421	3,737	64,201	6,611	298	416	31	62	1,065
7	75,568	7,394	48,014	18,558	297	295	5	79	926
8	75,724	4,385	36,286	32,388	221	1,057	38	140	1,209
9	75,594	3,673	49,404	19,517	204	1,435	28	126	1,207
10	83,456	8,447	55,257	17,420	253	680	29	137	1,233
11	82,341	10,144	50,241	13,664	252	6,031	26	207	1,776
12	76,315	5,061	40,831	28,875	212	325	31	90	890
13	76,622	2,639	64,318	7,262	334	608	65	109	1,287
14	79,512	8,264	52,179	13,434	447	1,847	227	141	2,973
15	78,030	8,016	54,928	10,806	477	1,153	191	122	2,337
16	82,566	4,841	56,325	18,096	1,697	294	27	94	1,192
17	78,689	4,764	61,085	10,533	519	453	28	95	1,212
18	77,812	4,852	48,961	21,253	381	786	49	155	1,375
19	77,192	3,622	65,074	6,349	350	505	28	127	1,137
20	76,405	3,027	67,329	3,454	200	1,196	36	104	1,059
21	83,470	10,529	37,506	32,524	561	845	38	129	1,338
22	83,430	9,815	44,765	25,904	1,489	258	33	91	1,075
23	81,071	2,873	34,150	42,933	193	184	12	55	671
24	81,234	7,724	40,157	31,462	190	664	22	108	907
25	80,891	3,397	42,234	32,886	523	690	17	100	1,044
26	83,432	8,708	60,529	11,888	313	644	11	132	1,207
27	76,986	1,457	30,208	41,981	2,101	395	9	79	756
28	83,431	13,649	54,413	13,576	371	332	20	96	974
29	82,735	12,052	32,825	30,413	216	5,466	34	257	1,472
30	83,272	8,493	45,691	24,522	196	2,696	52	186	1,436
31	82,773	14,465	22,765	41,144	240	2,447	38	221	1,453

32	83,100	4,514	34,753	41,285	1,133	348	17	73	977
33	83,342	12,261	30,874	37,487	306	933	30	165	1,286
34	82,825	6,802	61,439	10,763	156	2,176	25	149	1,315
35	76,950	4,620	56,193	11,925	201	2,476	15	122	1,398
36	83,373	6,189	65,853	6,036	198	3,598	44	166	1,289
37	83,358	6,672	61,743	10,971	323	1,906	29	103	1,611
38	82,856	15,490	22,941	39,258	250	3,065	38	181	1,633
39	83,252	12,293	37,276	29,492	274	2,015	30	170	1,702
40	76,609	3,448	57,219	6,977	174	7,136	21	130	1,504
41	82,826	3,700	56,469	5,310	194	15,013	34	215	1,891
42	80,970	9,083	35,490	30,194	679	1,795	340	181	3,208
43	78,228	4,102	43,148	26,343	1,371	1,091	134	95	1,944
44	83,254	10,096	29,115	36,666	642	2,703	455	222	3,355
45	77,431	6,942	43,313	20,803	1,978	1,301	185	175	2,734
46	80,990	6,952	29,056	21,264	22,196	168	28	102	1,224
47	80,942	4,995	24,437	19,782	28,992	849	42	76	1,769
48	83,131	6,577	35,769	29,276	8,173	743	95	137	2,361
49	83,261	6,303	60,288	10,910	209	3,938	25	147	1,441
50	80,652	5,238	56,021	16,156	247	1,551	19	114	1,306
51	83,360	13,295	50,082	16,779	428	829	63	144	1,740
52	76,872	4,633	59,439	10,297	615	680	25	91	1,092
53	82,977	8,426	54,252	17,049	784	593	75	134	1,664
54	82,386	9,301	56,665	12,453	233	2,269	26	165	1,274
55	76,304	7,468	44,936	22,012	323	543	16	116	890
56	76,868	6,523	53,163	7,557	206	7,505	20	215	1,679
57	83,303	6,081	39,032	32,566	307	3,467	18	218	1,614
58	80,613	9,994	31,321	31,787	451	4,775	77	265	1,943
59	79,752	3,982	53,179	20,002	406	850	25	124	1,184
60	82,878	7,185	37,315	31,252	376	4,917	35	204	1,594
61	79,765	3,207	41,246	31,980	258	1,498	17	145	1,414
62	82,095	4,377	63,135	9,395	273	3,552	21	167	1,175

63	75,592	11,313	44,302	17,648	333	794	24	111	1,067
64	75,539	5,326	57,416	10,337	209	1,012	31	100	1,108
65	83,430	4,731	60,543	16,195	264	389	41	83	1,184
66	83,021	6,916	51,714	20,919	1,201	1,004	20	93	1,154
67	82,822	2,628	72,122	5,846	265	1,092	18	43	808
68	76,114	3,925	63,063	5,668	147	1,917	26	185	1,183
69	75,829	10,391	54,439	8,498	283	1,064	20	141	993
70	76,125	9,117	59,853	4,687	358	1,097	15	79	919
71	76,107	15,023	27,924	30,480	185	943	25	196	1,331
72	80,144	8,016	37,309	31,577	193	1,501	55	152	1,341
73	76,243	9,463	54,898	10,197	172	564	46	93	810
74	78,989	4,506	62,337	8,253	139	2,521	18	136	1,079
75	77,550	8,516	56,447	10,190	271	969	17	130	1,010
76	82,663	6,998	54,476	18,619	233	1,068	32	114	1,123
77	83,117	5,840	69,579	5,927	209	463	10	69	1,020
78	76,980	6,209	64,378	4,722	390	365	5	63	848
79	75,538	4,613	50,629	18,811	241	288	7	71	878
80	81,522	5,369	67,274	6,929	307	651	18	84	890
81	81,356	5,039	66,212	7,340	327	1,306	8	136	988
82	79,549	8,477	53,268	14,337	184	1,795	32	140	1,316
83	81,522	7,876	58,735	11,642	233	1,585	26	144	1,281
84	77,273	5,886	58,303	10,793	161	1,072	10	76	972
85	78,344	3,820	70,644	2,422	232	446	6	52	722
86	79,175	4,411	65,712	4,760	180	2,788	161	76	1,087
87	83,026	3,796	73,562	4,025	159	421	16	70	977
88	76,454	11,731	43,920	16,567	220	2,910	20	137	949
89	77,788	5,436	62,195	6,490	179	2,442	20	108	918
90	82,774	6,156	72,589	2,646	152	386	13	43	789
91	82,886	4,349	73,355	3,801	260	215	14	75	817
92	76,129	10,731	26,461	32,625	255	4,323	55	207	1,472
93	78,365	3,024	72,693	1,003	173	572	18	59	823

94	83,358	4,709	72,471	4,372	154	602	20	84	946
95	82,164	4,958	65,804	7,955	255	1,827	26	102	1,237
96	76,570	7,596	58,193	6,367	163	2,869	14	92	1,276
97	78,265	5,238	67,139	4,269	222	415	13	89	880
98	80,131	5,019	65,627	5,923	175	2,058	26	128	1,175
99	75,969	11,484	33,300	27,052	306	1,934	47	241	1,605
100	76,143	17,895	26,851	26,359	267	3,113	68	209	1,381
101	76,212	6,793	27,806	36,685	314	2,847	49	120	1,598
102	76,395	9,904	26,879	35,667	248	2,291	50	122	1,234
103	77,930	6,170	56,355	9,862	228	3,530	41	368	1,376
104	75,768	7,517	54,578	9,639	142	2,555	36	217	1,084
105	76,254	6,934	52,789	8,565	188	6,157	34	232	1,355
106	76,481	10,826	23,780	32,657	271	6,910	48	235	1,754
107	75,762	6,940	27,026	36,441	229	3,363	44	191	1,528
108	76,067	4,233	56,583	12,917	299	714	16	119	1,186
109	76,123	4,707	58,349	10,109	223	1,504	24	98	1,109
110	75,864	3,882	60,023	10,268	230	363	18	69	1,011
111	76,110	2,135	54,148	17,945	148	616	8	61	1,049
112	79,547	2,620	66,814	7,997	183	664	6	77	1,186
113	81,120	3,937	72,886	2,551	199	336	40	66	1,105
114	80,056	5,350	69,695	2,588	260	588	186	92	1,297
115	77,363	3,519	65,631	5,625	261	744	27	118	1,438
116	80,900	5,385	65,915	6,766	257	1,056	58	125	1,338
117	79,222	8,573	65,396	2,788	253	861	134	86	1,131
118	76,352	2,397	71,997	712	227	224	15	40	740
119	75,546	3,417	61,744	1,068	7,372	497	21	37	1,390
120	80,814	3,370	73,962	827	1,049	385	15	31	1,175

¹American Indian and Alaska Native Alone, Not Latino

²Native Hawaiian and Pacific Islander Alone, Not Latino

DISTRICT	Total Population	Hispanic or Latino Origin	White Alone, not Latino	African American Alone, not Latino	AIAN Alone, not Latino ¹	Asian Alone, not Latino	NHPI Alone, not Latino ²	Other Alone, not Latino	Two or More, not Latino
1	69,211	2,152	38,931	25,035	195	336	12	210	2,340
2	83,769	7,391	51,520	20,701	415	396	23	296	3,027
3	73,887	5,644	47,077	13,966	216	2,748	144	354	3,738
4	74,527	13,486	43,063	14,254	266	417	60	245	2,736
5	72,474	4,016	34,974	29,461	402	592	41	306	2,682
6	81,880	4,615	67,458	5,262	262	582	39	315	3,347
7	84,336	9,968	51,954	18,286	317	474	18	351	2,968
8	80,097	6,246	34,408	34,495	223	1,388	48	387	2,902
9	73,320	5,287	42,638	20,591	205	1,540	31	316	2,712
10	82,933	9,650	51,754	17,442	274	669	42	309	2,793
11	90,800	12,351	50,722	14,019	250	8,489	62	738	4,169
12	71,998	5,793	36,414	26,775	201	461	37	185	2,132
13	76,851	3,511	63,320	5,772	294	616	63	287	2,988
14	86,538	11,100	50,826	14,864	402	2,246	280	522	6,298
15	92,260	13,875	60,563	9,275	505	1,999	441	500	5,102
16	86,643	6,612	59,472	14,901	1,526	414	34	312	3,372
17	98,561	6,401	76,682	10,081	595	661	65	261	3,815
18	83,686	8,076	51,861	18,063	334	1,182	44	438	3,688
19	94,366	5,365	77,637	6,105	345	890	57	315	3,652
20	85,727	4,866	71,665	4,113	147	1,623	55	344	2,914
21	77,788	12,965	31,800	28,395	508	1,002	42	283	2,793
22	74,158	10,955	38,196	20,921	1,425	219	23	190	2,229
23	70,931	3,601	28,868	36,167	197	210	10	202	1,676
24	78,784	9,024	36,106	29,842	239	900	10	257	2,406
25	79,179	4,316	36,624	34,178	556	882	27	333	2,263
26	118,828	16,001	76,348	18,898	453	1,364	44	599	5,121
27	66,336	1,808	25,965	34,538	1,655	308	15	218	1,829

28	94,587	18,963	56,820	14,382	410	459	16	315	3,222
29	93,626	12,346	37,591	33,483	160	5,983	15	468	3,580
30	97,126	14,214	47,763	27,025	225	3,522	37	547	3,793
31	111,133	21,770	34,938	44,430	280	5,140	27	652	3,896
32	77,488	5,471	30,672	37,597	1,056	440	22	207	2,023
33	94,620	16,295	34,791	37,460	385	1,781	37	544	3,327
34	89,516	7,127	65,827	10,177	126	2,710	23	406	3,120
35	107,662	9,701	70,004	18,696	211	3,834	38	489	4,689
36	96,673	9,413	70,095	6,731	180	5,660	26	540	4,028
37	124,178	11,769	87,992	13,003	343	4,874	47	616	5,534
38	93,793	20,620	28,256	36,308	278	4,414	45	541	3,331
39	106,498	19,930	40,287	37,815	375	3,209	60	743	4,079
40	98,655	5,743	61,824	10,297	191	15,939	29	458	4,174
41	130,061	7,641	66,877	8,407	236	40,911	51	671	5,267
42	85,537	12,380	31,978	31,862	615	2,537	478	576	5,111
43	79,333	5,792	39,394	26,367	1,413	1,426	159	454	4,328
44	83,353	11,594	22,510	39,519	711	2,792	499	583	5,145
45	86,994	9,780	39,650	26,499	1,910	2,189	224	601	6,141
46	70,145	7,329	24,211	16,760	19,036	175	26	213	2,395
47	70,628	5,446	19,949	16,631	24,780	786	38	272	2,726
48	86,362	8,802	33,976	29,488	7,531	1,055	204	449	4,857
49	97,463	7,740	68,571	11,723	188	4,910	36	462	3,833
50	88,487	9,263	58,321	14,416	210	2,321	29	391	3,536
51	97,727	18,711	54,295	17,767	487	1,236	166	433	4,632
52	88,110	6,496	66,341	9,483	606	1,179	56	311	3,638
53	92,505	11,704	56,131	18,563	696	770	116	461	4,064
54	98,935	12,098	66,459	11,963	209	3,619	28	455	4,104
55	73,976	9,361	41,938	19,059	267	646	26	326	2,353
56	83,082	7,573	52,327	7,989	193	10,353	27	465	4,155
57	90,260	8,162	35,804	36,579	292	5,392	14	414	3,603
58	87,463	13,261	26,915	37,215	389	5,566	66	493	3,558

59	95,086	7,074	54,473	27,432	408	1,622	36	428	3,613
60	88,810	10,763	35,554	31,417	338	6,910	39	637	3,152
61	87,243	6,195	40,750	34,247	233	2,290	29	422	3,077
62	92,472	6,691	62,177	12,531	258	6,941	32	456	3,386
63	85,328	15,955	43,529	20,631	327	1,147	39	401	3,299
64	85,922	8,731	58,860	12,891	255	1,662	47	360	3,116
65	81,569	5,639	56,799	15,389	254	442	28	255	2,763
66	77,747	7,324	46,680	18,544	1,102	887	11	235	2,964
67	87,046	4,406	71,016	6,714	306	1,233	18	235	3,118
68	101,149	7,652	73,963	7,718	204	6,929	34	460	4,189
69	85,197	13,763	55,801	9,562	259	2,164	34	451	3,163
70	78,503	11,483	56,476	5,470	404	1,772	7	226	2,665
71	81,664	18,427	27,381	31,004	227	1,180	31	351	3,063
72	85,031	10,956	38,998	29,627	177	1,939	40	415	2,879
73	77,018	10,973	51,159	11,118	165	713	124	285	2,481
74	91,793	7,407	65,682	10,365	181	4,362	21	338	3,437
75	84,293	11,304	55,246	12,707	291	1,130	17	324	3,274
76	87,774	10,157	53,746	18,829	256	1,114	47	330	3,295
77	87,357	8,604	68,272	6,038	236	601	25	274	3,307
78	77,212	8,433	60,856	4,191	345	445	6	226	2,710
79	71,425	4,991	47,233	16,116	192	475	22	214	2,182
80	83,751	7,070	64,396	7,860	316	981	19	253	2,856
81	85,143	6,826	65,088	7,965	349	1,454	24	235	3,202
82	102,167	12,696	56,884	20,249	262	7,257	56	527	4,236
83	104,423	13,477	60,856	20,380	249	4,504	58	510	4,389
84	81,728	7,388	58,351	11,343	182	1,217	9	276	2,962
85	77,278	4,633	66,851	2,403	224	496	2	203	2,466
86	77,049	6,836	59,844	4,150	197	2,852	64	216	2,890
87	80,634	4,919	67,860	3,841	196	527	15	238	3,038
88	99,605	16,709	58,458	15,468	212	5,084	21	512	3,141
89	79,484	7,082	60,004	5,745	184	3,186	43	246	2,994

90	79,338	7,665	66,553	2,371	141	397	17	148	2,046
91	78,299	4,921	66,834	3,362	215	268	14	154	2,531
92	103,229	18,501	31,279	41,331	260	7,227	62	594	3,975
93	80,688	5,040	69,038	2,226	130	1,040	23	481	2,710
94	81,106	5,610	67,813	4,128	174	643	4	173	2,561
95	104,956	8,382	78,048	9,914	256	3,503	49	379	4,425
96	80,481	10,201	55,730	6,824	193	3,715	34	289	3,495
97	87,304	6,480	71,973	4,446	239	713	15	208	3,230
98	104,768	8,705	78,469	9,167	177	3,715	13	463	4,059
99	90,749	19,325	31,271	32,067	241	3,774	78	643	3,350
100	82,510	20,253	27,968	24,726	207	5,945	40	736	2,635
101	89,013	13,529	24,993	42,502	256	3,917	50	486	3,280
102	90,638	13,924	37,966	31,250	212	3,696	33	454	3,103
103	87,202	8,899	55,876	11,863	197	5,979	34	780	3,574
104	82,274	10,016	55,873	9,501	140	3,510	28	374	2,832
105	92,400	11,290	50,994	11,397	178	14,195	48	554	3,744
106	99,617	16,370	22,433	46,254	422	10,215	72	682	3,169
107	93,537	12,405	23,125	49,331	228	4,331	53	613	3,451
108	83,929	7,662	54,094	16,789	287	1,098	24	333	3,642
109	88,771	7,672	61,107	13,789	288	2,099	29	334	3,453
110	77,179	5,491	56,372	11,423	210	418	15	242	3,008
111	77,600	3,276	52,264	17,799	190	748	14	262	3,047
112	75,117	3,663	60,913	6,466	193	657	23	237	2,965
113	82,473	5,991	70,204	2,187	225	435	90	262	3,079
114	89,377	7,736	73,481	2,759	248	850	181	420	3,702
115	84,760	5,514	68,295	5,450	235	907	58	503	3,798
116	95,241	8,669	73,024	6,804	242	1,515	228	459	4,300
117	86,217	11,741	66,874	2,832	214	1,095	181	294	2,986
118	79,222	3,480	71,542	708	292	305	3	226	2,666
119	79,736	4,988	61,336	1,087	8,008	730	20	192	3,375
120	84,883	5,054	73,807	731	1,198	467	17	196	3,413

¹American Indian and Alaska Native Alone, Not Latino

²Native Hawaiian and Pacific Islander Alone, Not Latino

Percent Change in Population from 2010 to 2020 by Race and Ethnicity at State House District Level

DISTRICT	Total Population	Hispanic or Latino Origin	White Alone, not Latino	African American Alone, not Latino	AIAN Alone, not Latino ¹	Asian Alone, not Latino	NHPI Alone, not Latino ²	Other Alone, not Latino	Two or More, not Latino
1	-10.20%	10.87%	-8.35%	-19.55%	-13.33%	-25.83%	33.33%	556.25%	187.47%
2	1.32%	39.35%	-3.20%	-6.57%	-10.94%	17.86%	21.05%	208.33%	181.84%
3	-2.43%	16.97%	-6.78%	-13.59%	-26.78%	42.53%	42.57%	276.60%	105.38%
4	-5.27%	-1.37%	-7.11%	-16.01%	2.31%	39.93%	25.00%	235.62%	175.81%
5	-6.35%	63.32%	-9.16%	-13.45%	-11.45%	-0.17%	86.36%	144.80%	124.25%
6	7.14%	23.49%	5.07%	-20.41%	-12.08%	39.90%	25.81%	408.06%	214.27%
7	11.60%	34.81%	8.21%	-1.47%	6.73%	60.68%	260.00%	344.30%	220.52%
8	5.77%	42.44%	-5.18%	6.51%	0.90%	31.32%	26.32%	176.43%	140.03%
9	-3.01%	43.94%	-13.70%	5.50%	0.49%	7.32%	10.71%	150.79%	124.69%
10	-0.63%	14.24%	-6.34%	0.13%	8.30%	-1.62%	44.83%	125.55%	126.52%
11	10.27%	21.76%	0.96%	2.60%	-0.79%	40.76%	138.46%	256.52%	134.74%
12	-5.66%	14.46%	-10.82%	-7.27%	-5.19%	41.85%	19.35%	105.56%	139.55%
13	0.30%	33.04%	-1.55%	-20.52%	-11.98%	1.32%	-3.08%	163.30%	132.17%
14	8.84%	34.32%	-2.59%	10.64%	-10.07%	21.60%	23.35%	270.21%	111.84%
15	18.24%	73.09%	10.26%	-14.17%	5.87%	73.37%	130.89%	309.84%	118.31%
16	4.94%	36.58%	5.59%	-17.66%	-10.08%	40.82%	25.93%	231.91%	182.89%
17	25.25%	34.36%	25.53%	-4.29%	14.64%	45.92%	132.14%	174.74%	214.77%
18	7.55%	66.45%	5.92%	-15.01%	-12.34%	50.38%	-10.20%	182.58%	168.22%
19	22.25%	48.12%	19.31%	-3.84%	-1.43%	76.24%	103.57%	148.03%	221.20%
20	12.20%	60.75%	6.44%	19.08%	-26.50%	35.70%	52.78%	230.77%	175.17%
21	-6.81%	23.14%	-15.21%	-12.70%	-9.45%	18.58%	10.53%	119.38%	108.74%
22	-11.11%	11.61%	-14.67%	-19.24%	-4.30%	-15.12%	-30.30%	108.79%	107.35%
23	-12.51%	25.34%	-15.47%	-15.76%	2.07%	14.13%	-16.67%	267.27%	149.78%
24	-3.02%	16.83%	-10.09%	-5.15%	25.79%	35.54%	-54.55%	137.96%	165.27%
25	-2.12%	27.05%	-13.28%	3.93%	6.31%	27.83%	58.82%	233.00%	116.76%

26	42.42%	83.75%	26.13%	58.97%	44.73%	111.80%	300.00%	353.79%	324.28%
27	-13.83%	24.09%	-14.05%	-17.73%	-21.23%	-22.03%	66.67%	175.95%	141.93%
28	13.37%	38.93%	4.42%	5.94%	10.51%	38.25%	-20.00%	228.13%	230.80%
29	13.16%	2.44%	14.52%	10.09%	-25.93%	9.46%	-55.88%	82.10%	143.21%
30	16.64%	67.36%	4.53%	10.21%	14.80%	30.64%	-28.85%	194.09%	164.14%
31	34.26%	50.50%	53.47%	7.99%	16.67%	110.05%	-28.95%	195.02%	168.13%
32	-6.75%	21.20%	-11.74%	-8.93%	-6.80%	26.44%	29.41%	183.56%	107.06%
33	13.53%	32.90%	12.69%	-0.07%	25.82%	90.89%	23.33%	229.70%	158.71%
34	8.08%	4.78%	7.14%	-5.44%	-19.23%	24.54%	-8.00%	172.48%	137.26%
35	39.91%	109.98%	24.58%	56.78%	4.98%	54.85%	153.33%	300.82%	235.41%
36	15.95%	52.09%	6.44%	11.51%	-9.09%	57.31%	-40.91%	225.30%	212.49%
37	48.97%	76.39%	42.51%	18.52%	6.19%	155.72%	62.07%	498.06%	243.51%
38	13.20%	33.12%	23.17%	-7.51%	11.20%	44.01%	18.42%	198.90%	103.98%
39	27.92%	62.12%	8.08%	28.22%	36.86%	59.26%	100.00%	337.06%	139.66%
40	28.78%	66.56%	8.05%	47.58%	9.77%	123.36%	38.10%	252.31%	177.53%
41	57.03%	106.51%	18.43%	58.32%	21.65%	172.50%	50.00%	212.09%	178.53%
42	5.64%	36.30%	-9.90%	5.52%	-9.43%	41.34%	40.59%	218.23%	59.32%
43	1.41%	41.20%	-8.70%	0.09%	3.06%	30.71%	18.66%	377.89%	122.63%
44	0.12%	14.84%	-22.69%	7.78%	10.75%	3.29%	9.67%	162.61%	53.35%
45	12.35%	40.88%	-8.46%	27.38%	-3.44%	68.26%	21.08%	243.43%	124.62%
46	-13.39%	5.42%	-16.67%	-21.18%	-14.24%	4.17%	-7.14%	108.82%	95.67%
47	-12.74%	9.03%	-18.37%	-15.93%	-14.53%	-7.42%	-9.52%	257.89%	54.10%
48	3.89%	33.83%	-5.01%	0.72%	-7.86%	41.99%	114.74%	227.74%	105.72%
49	17.06%	22.80%	13.74%	7.45%	-10.05%	24.68%	44.00%	214.29%	166.00%
50	9.71%	76.84%	4.11%	-10.77%	-14.98%	49.65%	52.63%	242.98%	170.75%
51	17.23%	40.74%	8.41%	5.89%	13.79%	49.10%	163.49%	200.69%	166.21%
52	14.62%	40.21%	11.61%	-7.91%	-1.46%	73.38%	124.00%	241.76%	233.15%
53	11.48%	38.90%	3.46%	8.88%	-11.22%	29.85%	54.67%	244.03%	144.23%
54	20.09%	30.07%	17.28%	-3.93%	-10.30%	59.50%	7.69%	175.76%	222.14%
55	-3.05%	25.35%	-6.67%	-13.42%	-17.34%	18.97%	62.50%	181.03%	164.38%
56	8.08%	16.10%	-1.57%	5.72%	-6.31%	37.95%	35.00%	116.28%	147.47%

57	8.35%	34.22%	-8.27%	12.32%	-4.89%	55.52%	-22.22%	89.91%	123.23%
58	8.50%	32.69%	-14.07%	17.08%	-13.75%	16.57%	-14.29%	86.04%	83.12%
59	19.23%	77.65%	2.43%	37.15%	0.49%	90.82%	44.00%	245.16%	205.15%
60	7.16%	49.80%	-4.72%	0.53%	-10.11%	40.53%	11.43%	212.25%	97.74%
61	9.38%	93.17%	-1.20%	7.09%	-9.69%	52.87%	70.59%	191.03%	117.61%
62	12.64%	52.87%	-1.52%	33.38%	-5.49%	95.41%	52.38%	173.05%	188.17%
63	12.88%	41.03%	-1.74%	16.90%	-1.80%	44.46%	62.50%	261.26%	209.18%
64	13.75%	63.93%	2.51%	24.71%	22.01%	64.23%	51.61%	260.00%	181.23%
65	-2.23%	19.19%	-6.18%	-4.98%	-3.79%	13.62%	-31.71%	207.23%	133.36%
66	-6.35%	5.90%	-9.73%	-11.35%	-8.24%	-11.65%	-45.00%	152.69%	156.85%
67	5.10%	67.66%	-1.53%	14.85%	15.47%	12.91%	0.00%	446.51%	285.89%
68	32.89%	94.96%	17.28%	36.17%	38.78%	261.45%	30.77%	148.65%	254.10%
69	12.35%	32.45%	2.50%	12.52%	-8.48%	103.38%	70.00%	219.86%	218.53%
70	3.12%	25.95%	-5.64%	16.71%	12.85%	61.53%	-53.33%	186.08%	189.99%
71	7.30%	22.66%	-1.94%	1.72%	22.70%	25.13%	24.00%	79.08%	130.13%
72	6.10%	36.68%	4.53%	-6.18%	-8.29%	29.18%	-27.27%	173.03%	114.69%
73	1.02%	15.96%	-6.81%	9.03%	-4.07%	26.42%	169.57%	206.45%	206.30%
74	16.21%	64.38%	5.37%	25.59%	30.22%	73.03%	16.67%	148.53%	218.54%
75	8.70%	32.74%	-2.13%	24.70%	7.38%	16.62%	0.00%	149.23%	224.16%
76	6.18%	45.14%	-1.34%	1.13%	9.87%	4.31%	46.88%	189.47%	193.41%
77	5.10%	47.33%	-1.88%	1.87%	12.92%	29.81%	150.00%	297.10%	224.22%
78	0.30%	35.82%	-5.47%	-11.25%	-11.54%	21.92%	20.00%	258.73%	219.58%
79	-5.44%	8.19%	-6.71%	-14.33%	-20.33%	64.93%	214.29%	201.41%	148.52%
80	2.73%	31.68%	-4.28%	13.44%	2.93%	50.69%	5.56%	201.19%	220.90%
81	4.65%	35.46%	-1.70%	8.51%	6.73%	11.33%	200.00%	72.79%	224.09%
82	28.43%	49.77%	6.79%	41.24%	42.39%	304.29%	75.00%	276.43%	221.88%
83	28.09%	71.11%	3.61%	75.06%	6.87%	184.16%	123.08%	254.17%	242.62%
84	5.77%	25.52%	0.08%	5.10%	13.04%	13.53%	-10.00%	263.16%	204.73%
85	-1.36%	21.28%	-5.37%	-0.78%	-3.45%	11.21%	-66.67%	290.38%	241.55%
86	-2.69%	54.98%	-8.93%	-12.82%	9.44%	2.30%	-60.25%	184.21%	165.87%
87	-2.88%	29.58%	-7.75%	-4.57%	23.27%	25.18%	-6.25%	240.00%	210.95%

88	30.28%	42.43%	33.10%	-6.63%	-3.64%	74.71%	5.00%	273.72%	230.98%
89	2.18%	30.28%	-3.52%	-11.48%	2.79%	30.47%	115.00%	127.78%	226.14%
90	-4.15%	24.51%	-8.32%	-10.39%	-7.24%	2.85%	30.77%	244.19%	159.32%
91	-5.53%	13.15%	-8.89%	-11.55%	-17.31%	24.65%	0.00%	105.33%	209.79%
92	35.60%	72.41%	18.21%	26.69%	1.96%	67.18%	12.73%	186.96%	170.04%
93	2.96%	66.67%	-5.03%	121.93%	-24.86%	81.82%	27.78%	715.25%	229.28%
94	-2.70%	19.13%	-6.43%	-5.58%	12.99%	6.81%	-80.00%	105.95%	170.72%
95	27.74%	69.06%	18.61%	24.63%	0.39%	91.74%	88.46%	271.57%	257.72%
96	5.11%	34.29%	-4.23%	7.18%	18.40%	29.49%	142.86%	214.13%	173.90%
97	11.55%	23.71%	7.20%	4.15%	7.66%	71.81%	15.38%	133.71%	267.05%
98	30.75%	73.44%	19.57%	54.77%	1.14%	80.52%	-50.00%	261.72%	245.45%
99	19.46%	68.28%	-6.09%	18.54%	-21.24%	95.14%	65.96%	166.80%	108.72%
100	8.36%	13.18%	4.16%	-6.20%	-22.47%	90.97%	-41.18%	252.15%	90.80%
101	16.80%	99.16%	-10.12%	15.86%	-18.47%	37.58%	2.04%	305.00%	105.26%
102	18.64%	40.59%	41.25%	-12.38%	-14.52%	61.33%	-34.00%	272.13%	151.46%
103	11.90%	44.23%	-0.85%	20.29%	-13.60%	69.38%	-17.07%	111.96%	159.74%
104	8.59%	33.24%	2.37%	-1.43%	-1.41%	37.38%	-22.22%	72.35%	161.25%
105	21.17%	62.82%	-3.40%	33.06%	-5.32%	130.55%	41.18%	138.79%	176.31%
106	30.25%	51.21%	-5.66%	41.64%	55.72%	47.83%	50.00%	190.21%	80.67%
107	23.46%	78.75%	-14.43%	35.37%	-0.44%	28.78%	20.45%	220.94%	125.85%
108	10.34%	81.01%	-4.40%	29.98%	-4.01%	53.78%	50.00%	179.83%	207.08%
109	16.62%	62.99%	4.73%	36.40%	29.15%	39.56%	20.83%	240.82%	211.36%
110	1.73%	41.45%	-6.08%	11.25%	-8.70%	15.15%	-16.67%	250.72%	197.53%
111	1.96%	53.44%	-3.48%	-0.81%	28.38%	21.43%	75.00%	329.51%	190.47%
112	-5.57%	39.81%	-8.83%	-19.14%	5.46%	-1.05%	283.33%	207.79%	150.00%
113	1.67%	52.17%	-3.68%	-14.27%	13.07%	29.46%	125.00%	296.97%	178.64%
114	11.64%	44.60%	5.43%	6.61%	-4.62%	44.56%	-2.69%	356.52%	185.43%
115	9.56%	56.69%	4.06%	-3.11%	-9.96%	21.91%	114.81%	326.27%	164.12%
116	17.73%	60.98%	10.79%	0.56%	-5.84%	43.47%	293.10%	267.20%	221.38%
117	8.83%	36.95%	2.26%	1.58%	-15.42%	27.18%	35.07%	241.86%	164.01%
118	3.76%	45.18%	-0.63%	-0.56%	28.63%	36.16%	-80.00%	465.00%	260.27%

119	5.55%	45.98%	-0.66%	1.78%	8.63%	46.88%	-4.76%	418.92%	142.81%
120	5.04%	49.97%	-0.21%	-11.61%	14.20%	21.30%	13.33%	532.26%	190.47%

¹American Indian and Alaska Native Alone, Not Latino

²Native Hawaiian and Pacific Islander Alone, Not Latino

Variable definitions

District shapefiles were retrieved from the Redistricting Data Hub, All About Redistricting, and the U.S. Census. The list of variables below can be found in the P1 and P2 table of the PL 94-171. Data was retrieved from the Redistricting Data Hub processed legacy file of the PL 94-171.

Variable Name in Report	Census Variable Reference
Total Population	P0010001
Hispanic or Latino Origin	P0020002
White Alone, not Latino	P0020005
African American Alone, not Latino	P0020006
American Indian and Alaska Native Alone, not Latino	P0020007
Asian Alone, not Latino	P0020008
Native Hawaiian and Pacific Islander Alone, not Latino	P0020009
Other Alone, not Latino	P0020010
Two or More, not Latino	P0020011