

HAYSTAQ DNA

Nevada

Overview	1
Congressional	2
Total Population	3
Population by Race and Ethnicity	6
State Senate	12
Total Population	13
Population by Race and Ethnicity	16
Las Vegas	20
Reno	25
State Assembly	32
Total Population	33
Population by Race and Ethnicity	37
Las Vegas	41
Reno	46
Variable definitions	55

Overview

Nevada's population grew 14.96% this past decade, an increase of 173,756. This growth occurred across the state's 4 districts but primarily occurred in district 3, just south of Las Vegas. Nevada will continue to have 4 congressional seats after this redistricting cycle.

The White population decreased 2.47% as representation in the state fell below 50% to 45.93%. District 1, which encompasses the city of Las Vegas, lost 21.86% of its white population. They shifted to the suburbs of District 3.

The Hispanic population grew by 24.25% as their representation in the state grew from 26.53% to 28.68%. This growth occurred across the state but was higher in District 3.

The Asian population increased by 39.23% over the past decade increasing their representation in the state from 7.07% to 8.57%. This growth occurred across the state, but was highest in District 3 with an increase of 57.66% from the previous decade.

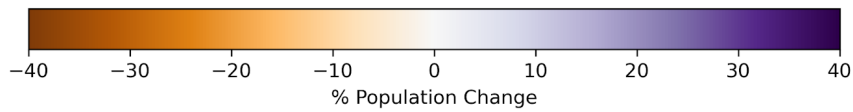
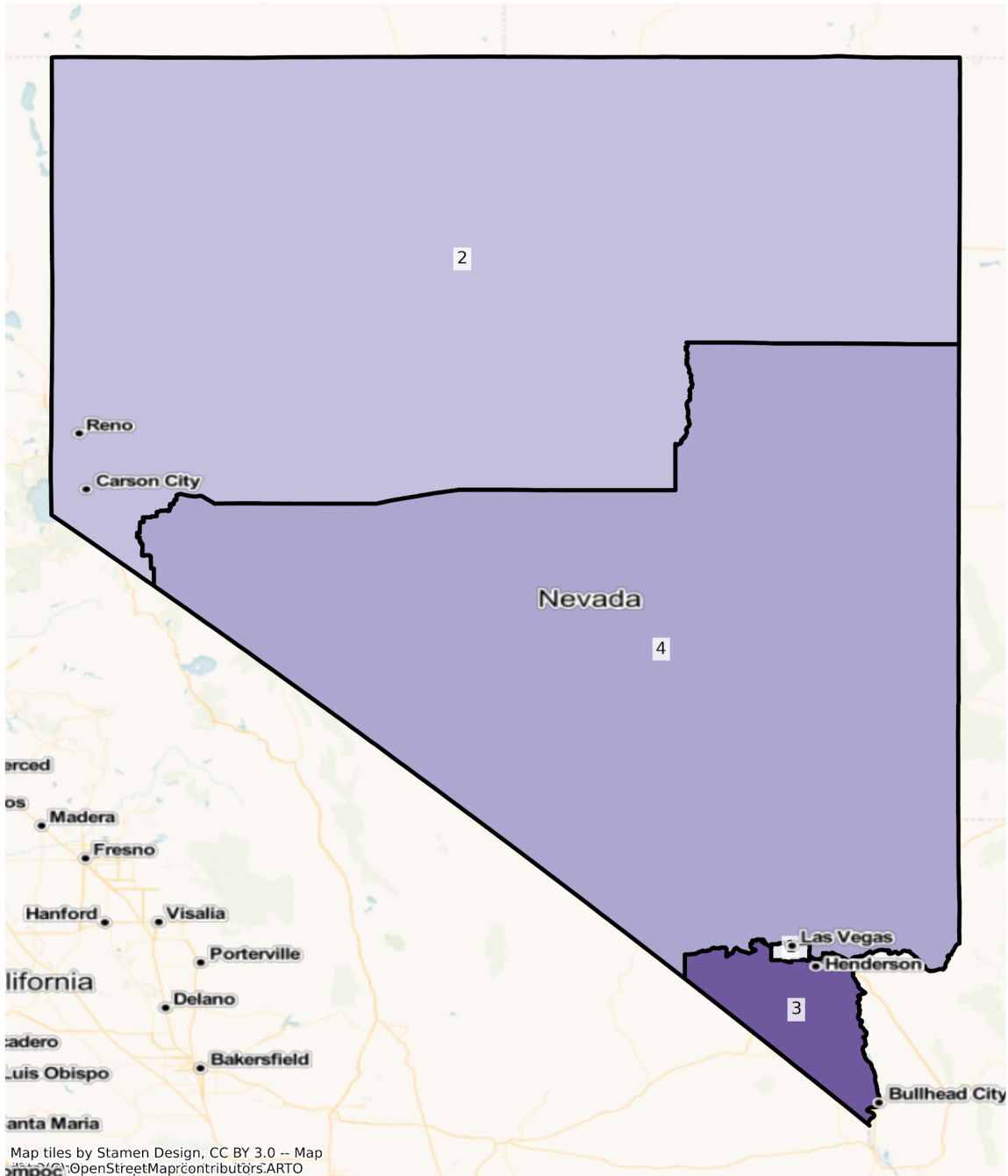
The African American population grew 40.33% over the past decade increasing their overall share of the population from 7.70% to 9.40%. Their growth came from across the state's 4 districts, but predominantly in District 3.

Congressional

The charts below display the percent change in population from 2010 to 2020 for the listed group. Please note that the color bars are fixed to be from -40% to 40% and these maps are displayed in brown to purple. If the percent change in population was outside of this range, the color scheme changes to red to green to indicate a change.

Total Population

NV Congressional Districts Population % Change from 2010 to 2020 Total Population



Total Population from 2010 to 2020 at Congressional District Level

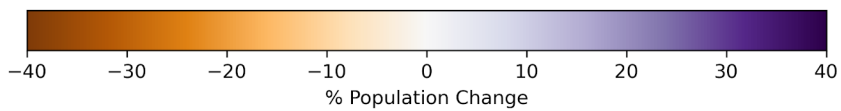
DISTRICT	Total Population 2010	Total Population 2020	Total Population % Change
1	675,138	702,822	4.10%
2	675,138	758,820	12.39%
3	675,138	855,528	26.72%
4	675,137	787,444	16.63%

Population by Race and Ethnicity

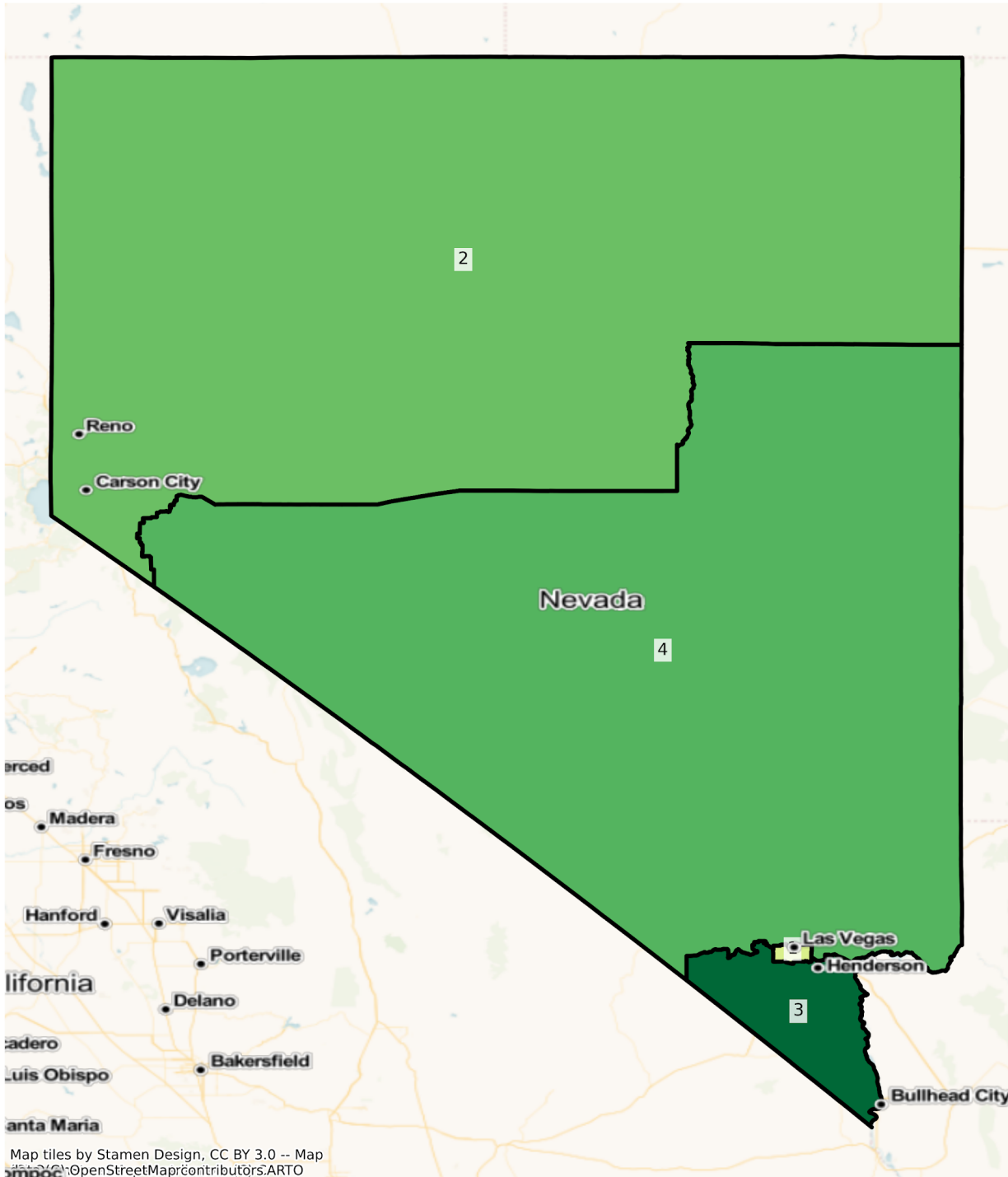
NV Congressional Districts
Population % Change from 2010 to 2020
Ethnicity: Not Latino White alone



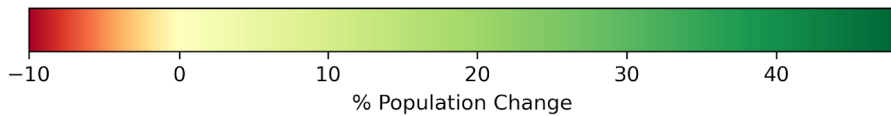
Map tiles by Stamen Design, CC BY 3.0 -- Map data © OpenStreetMap contributors, ARTO



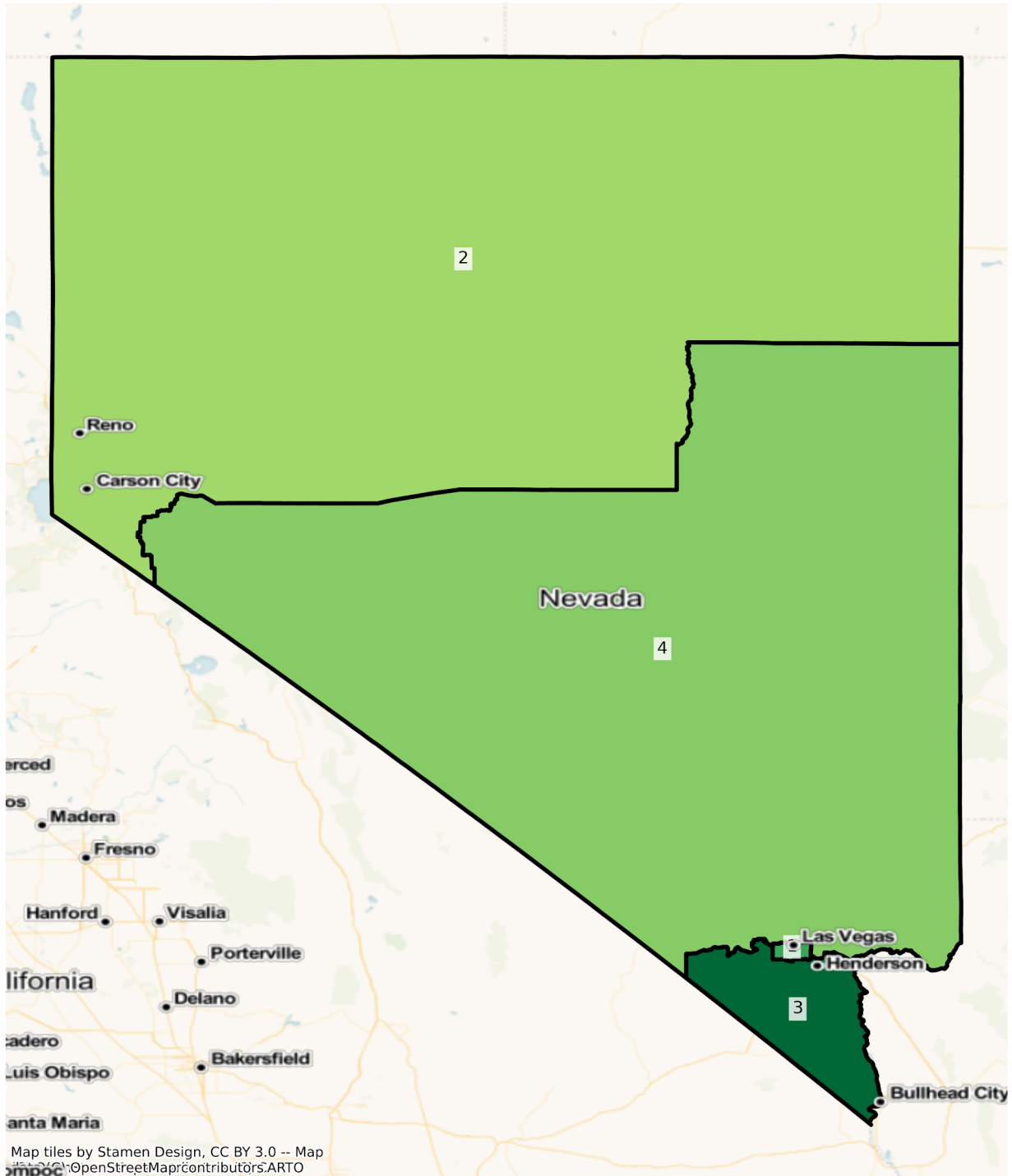
NV Congressional Districts
Population % Change from 2010 to 2020
Ethnicity: Hispanic or Latino



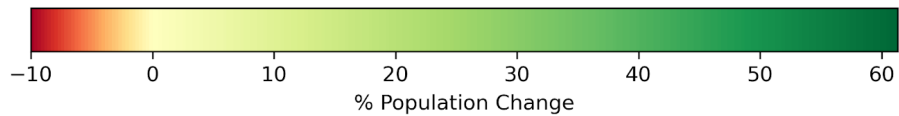
Map tiles by Stamen Design, CC BY 3.0 -- Map data by OpenStreetMap contributors, ARTO



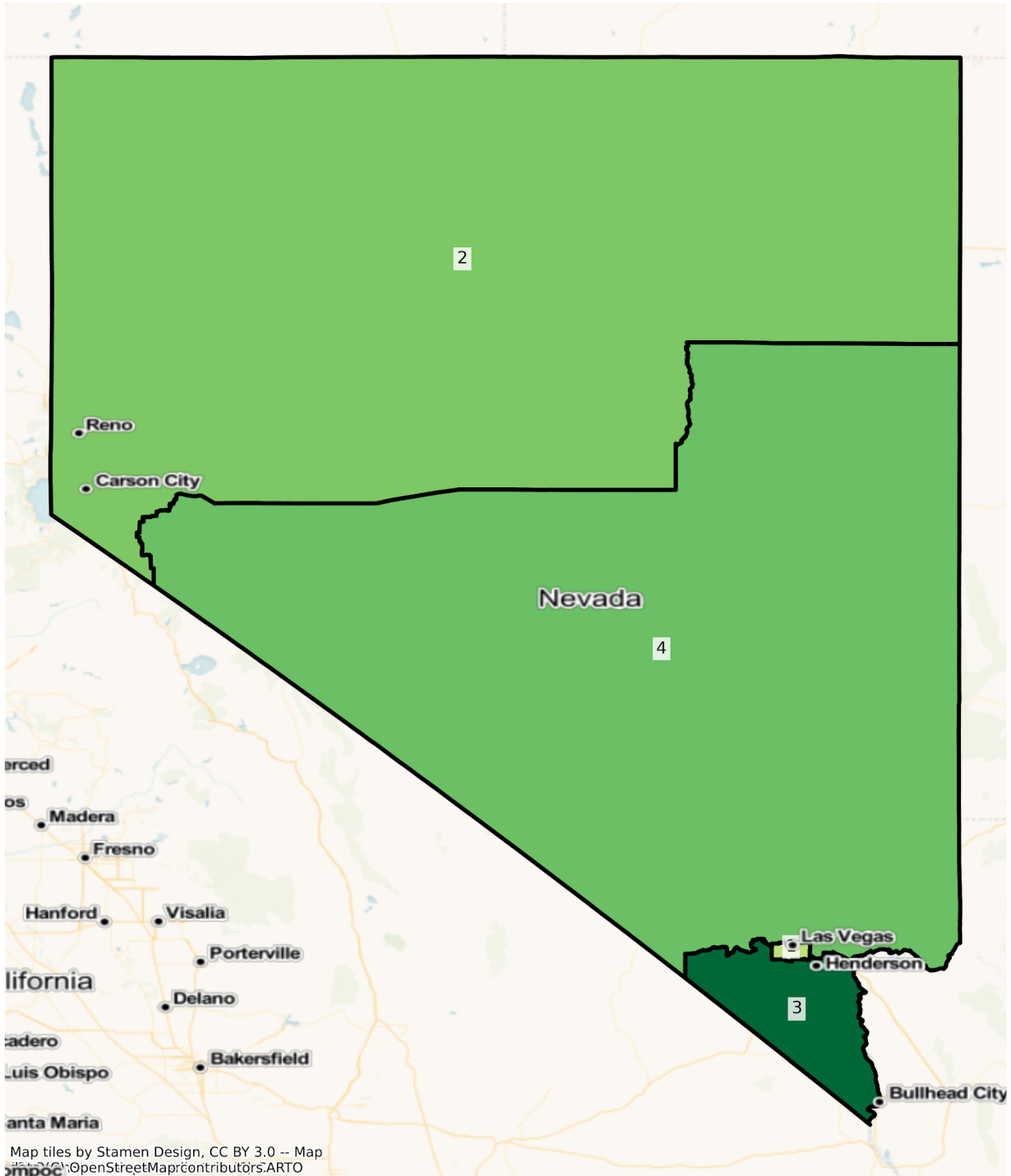
NV Congressional Districts
Population % Change from 2010 to 2020
Ethnicity: Not Latino African American alone



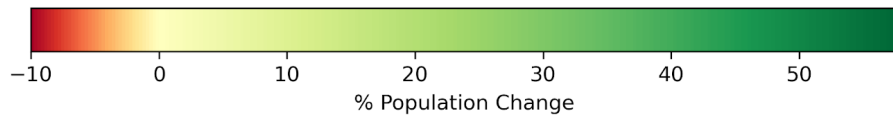
Map tiles by Stamen Design, CC BY 3.0 -- Map data by OpenStreetMap contributors, ARTO



NV Congressional Districts
Population % Change from 2010 to 2020
Ethnicity: Not Latino Asian alone



Map tiles by Stamen Design, CC BY 3.0 -- Map data by OpenStreetMap contributors, ARTO



2010 Population by Race and Ethnicity at Congressional District Level

DISTRICT	Total Population	Hispanic or Latino Origin	White Alone, not Latino	African American Alone, not Latino	AIAN Alone, not Latino ¹	Asian Alone, not Latino	NHPI Alone, not Latino ²	Other Alone, not Latino	Two or More, not Latino
1	675,138	288,774	245,552	63,850	3,122	51,354	4,057	1,354	17,075
2	675,138	137,962	468,393	11,681	12,625	25,140	2,764	943	15,630
3	675,138	105,752	412,798	41,043	2,747	81,510	4,753	1,386	25,149
4	675,137	184,013	335,338	91,484	5,042	33,043	3,882	1,057	21,278

¹American Indian and Alaska Native Alone, Not Latino

²Native Hawaiian and Pacific Islander Alone, Not Latino

2020 Population by Race and Ethnicity at Congressional District Level

DISTRICT	Total Population	Hispanic or Latino Origin	White Alone, not Latino	African American Alone, not Latino	AIAN Alone, not Latino ¹	Asian Alone, not Latino	NHPI Alone, not Latino ²	Other Alone, not Latino	Two or More, not Latino
1	702,822	316,819	191,884	91,711	2,807	60,664	5,183	4,309	29,445
2	758,820	176,415	475,473	14,636	12,749	32,736	3,826	3,924	39,061
3	855,528	156,463	432,907	66,199	2,929	128,512	8,291	4,772	55,455
4	787,444	240,560	325,688	119,414	4,907	44,079	5,670	4,166	42,960

¹American Indian and Alaska Native Alone, Not Latino

²Native Hawaiian and Pacific Islander Alone, Not Latino

Percent Change in Population from 2010 to 2020 by Race and Ethnicity at Congressional District Level

DISTRICT	Total Population	Hispanic or Latino Origin	White Alone, not Latino	African American Alone, not Latino	AIAN Alone, not Latino ¹	Asian Alone, not Latino	NHPI Alone, not Latino ²	Other Alone, not Latino	Two or More, not Latino
1	4.10%	9.71%	-21.86%	43.64%	-10.09%	18.13%	27.75%	218.24%	72.45%
2	12.39%	27.87%	1.51%	25.30%	0.98%	30.21%	38.42%	316.12%	149.91%
3	26.72%	47.95%	4.87%	61.29%	6.63%	57.66%	74.44%	244.30%	120.51%

4	16.63%	30.73%	-2.88%	30.53%	-2.68%	33.40%	46.06%	294.13%	101.90%
---	--------	--------	--------	--------	--------	--------	--------	---------	---------

¹American Indian and Alaska Native Alone, Not Latino

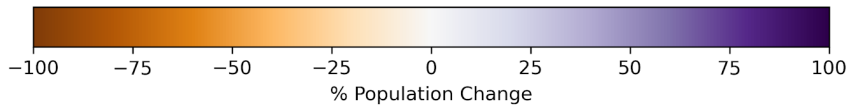
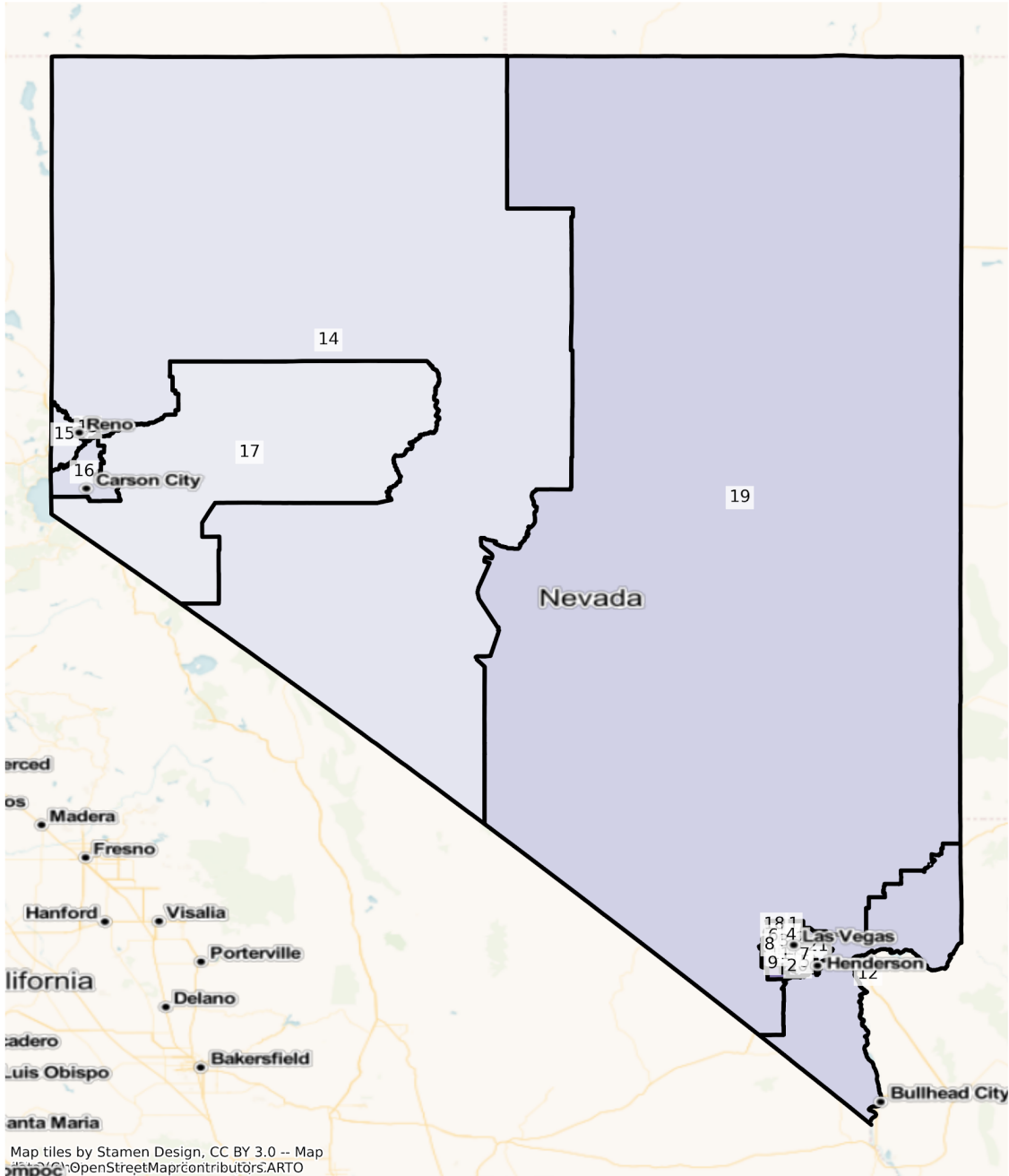
²Native Hawaiian and Pacific Islander Alone, Not Latino

State Senate

The charts below display the percent change in population from 2010 to 2020 for the listed group. Please note that the color bars are fixed to be from -100% to 100% and these maps are displayed in brown to purple. If the percent change in population was outside of this range, the color scheme changes to red to green to indicate a change.

Total Population

NV State Senate Districts
Population % Change from 2010 to 2020
Total Population

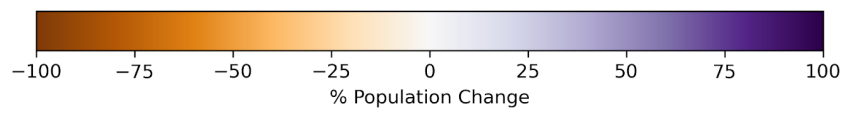
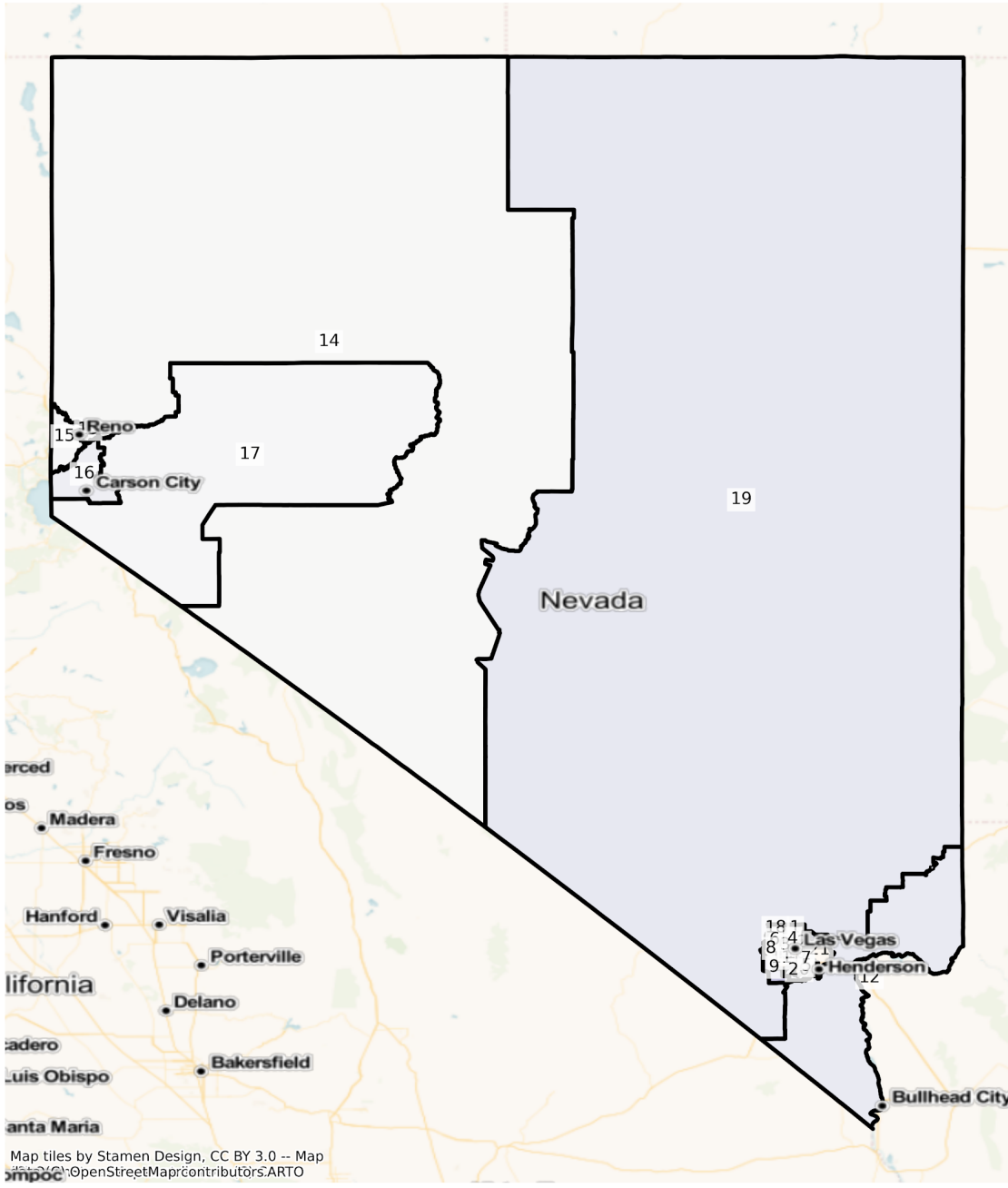


Total Population from 2010 to 2020 at State Senate District Level

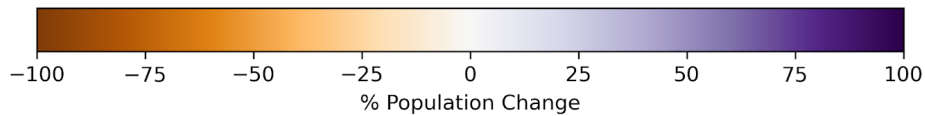
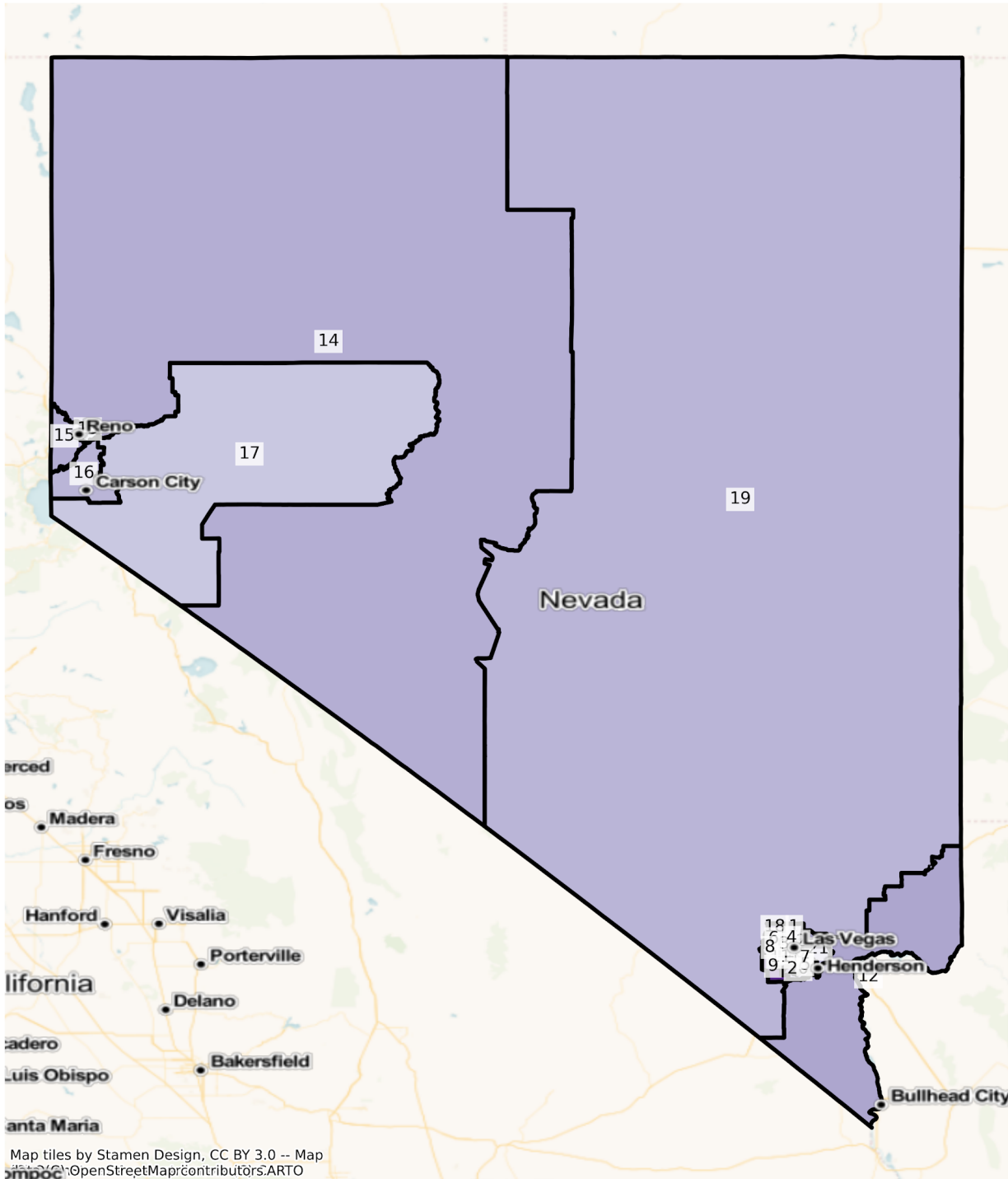
DISTRICT	Total Population 2010	Total Population 2020	Total Population % Change
1	128,861	165,542	28.47%
2	128,715	128,419	-0.23%
3	128,724	132,412	2.87%
4	128,783	141,147	9.60%
5	128,920	134,626	4.43%
6	128,587	134,456	4.56%
7	128,598	143,026	11.22%
8	128,218	135,709	5.84%
9	128,882	204,521	58.69%
10	128,440	137,808	7.29%
11	128,564	145,009	12.79%
12	128,713	158,900	23.45%
13	128,417	143,440	11.70%
14	128,935	144,472	12.05%
15	128,619	144,350	12.23%
16	128,490	150,712	17.29%
17	127,832	138,335	8.22%
18	128,710	154,030	19.67%
19	128,615	158,810	23.48%
20	128,541	161,487	25.63%
21	128,387	147,403	14.81%

Population by Race and Ethnicity

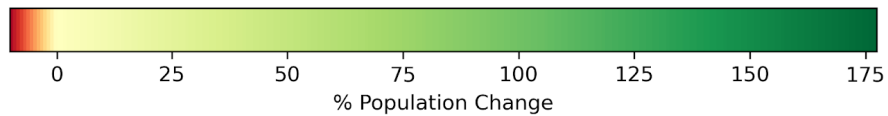
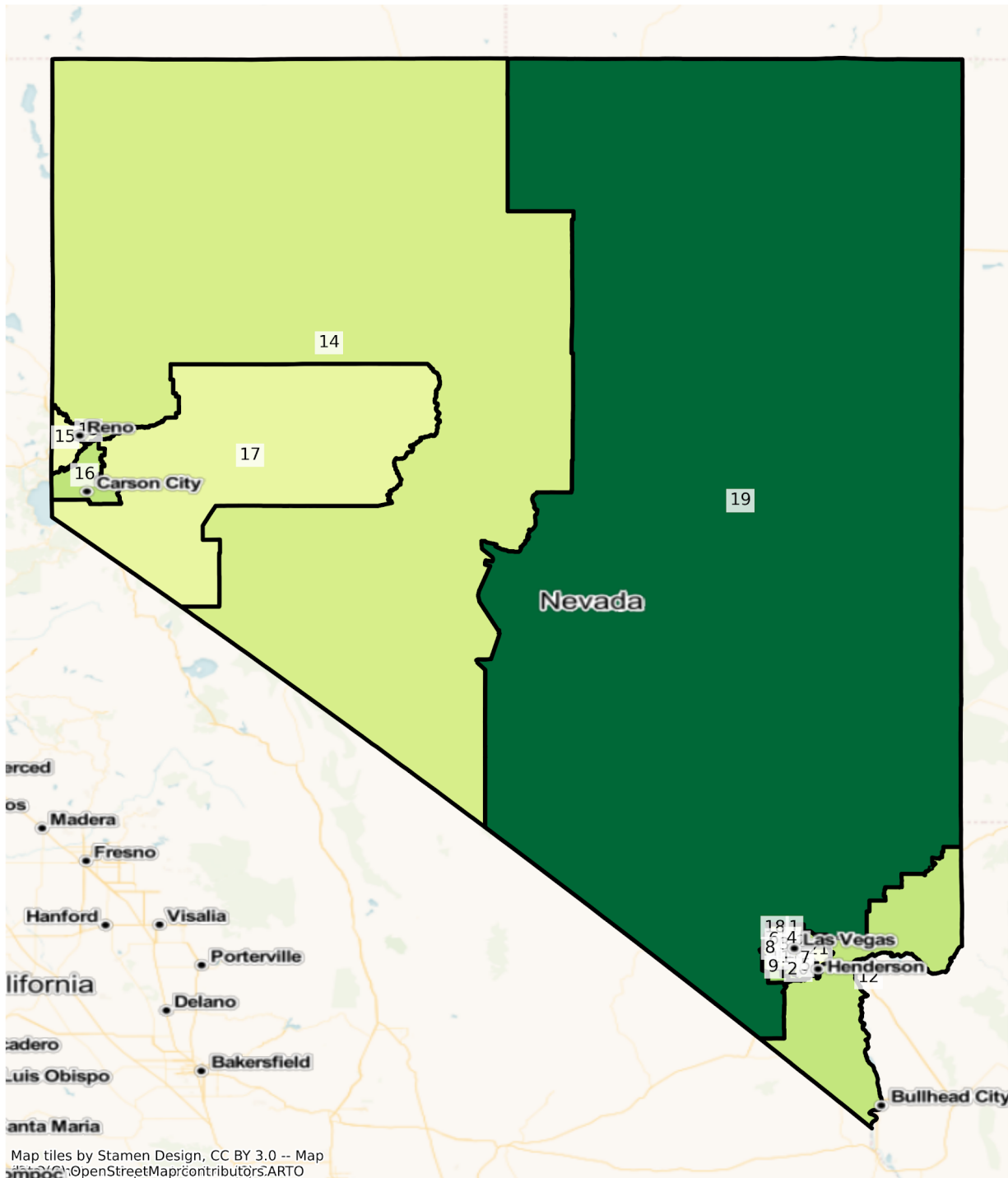
NV State Senate Districts
Population % Change from 2010 to 2020
Ethnicity: Not Latino White alone



NV State Senate Districts
 Population % Change from 2010 to 2020
 Ethnicity: Hispanic or Latino

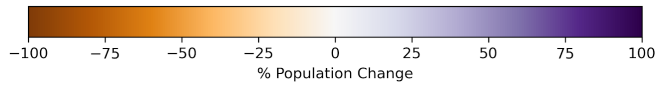
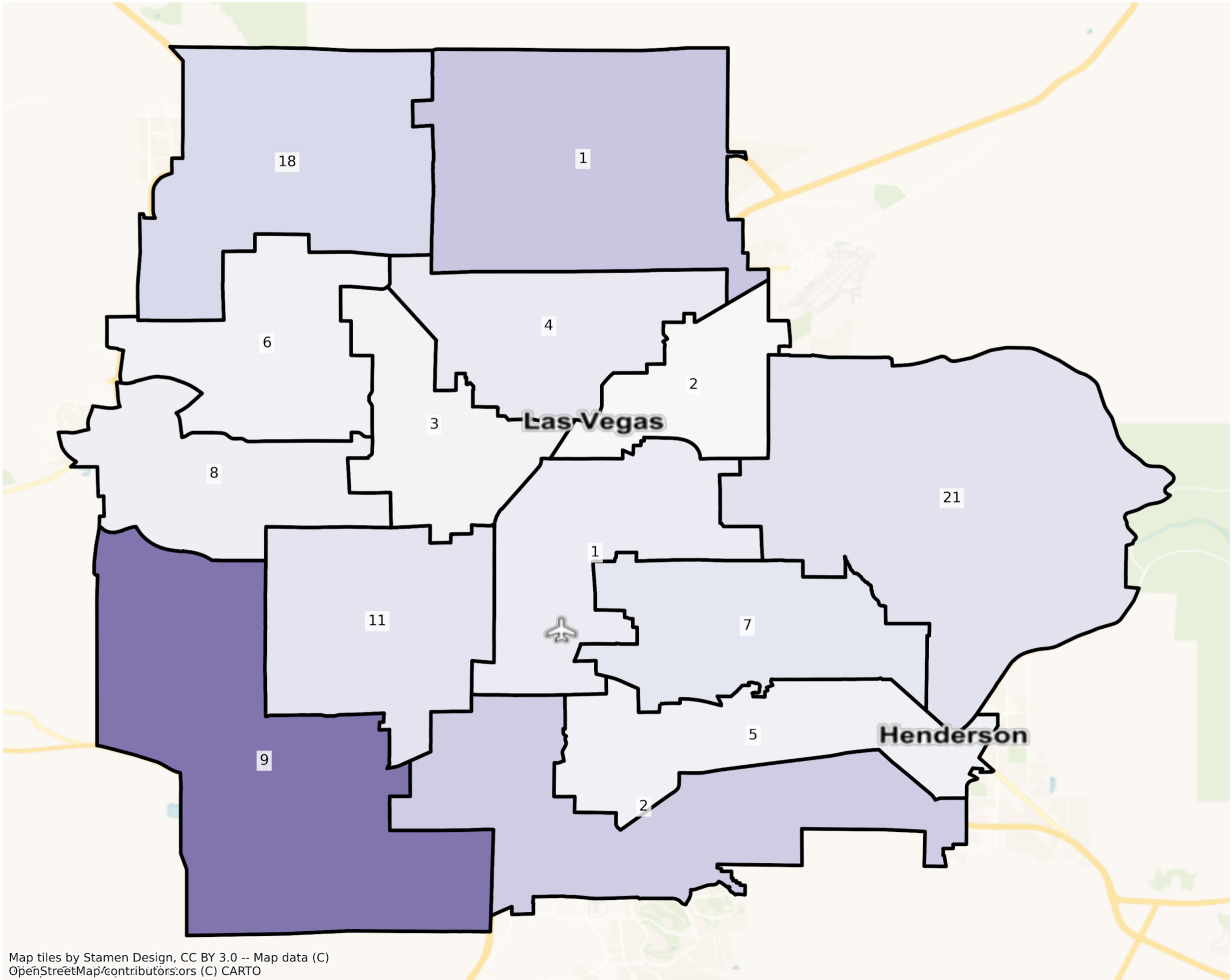


NV State Senate Districts
 Population % Change from 2010 to 2020
 Ethnicity: Not Latino Asian alone

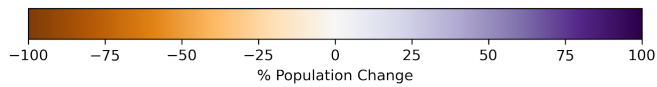
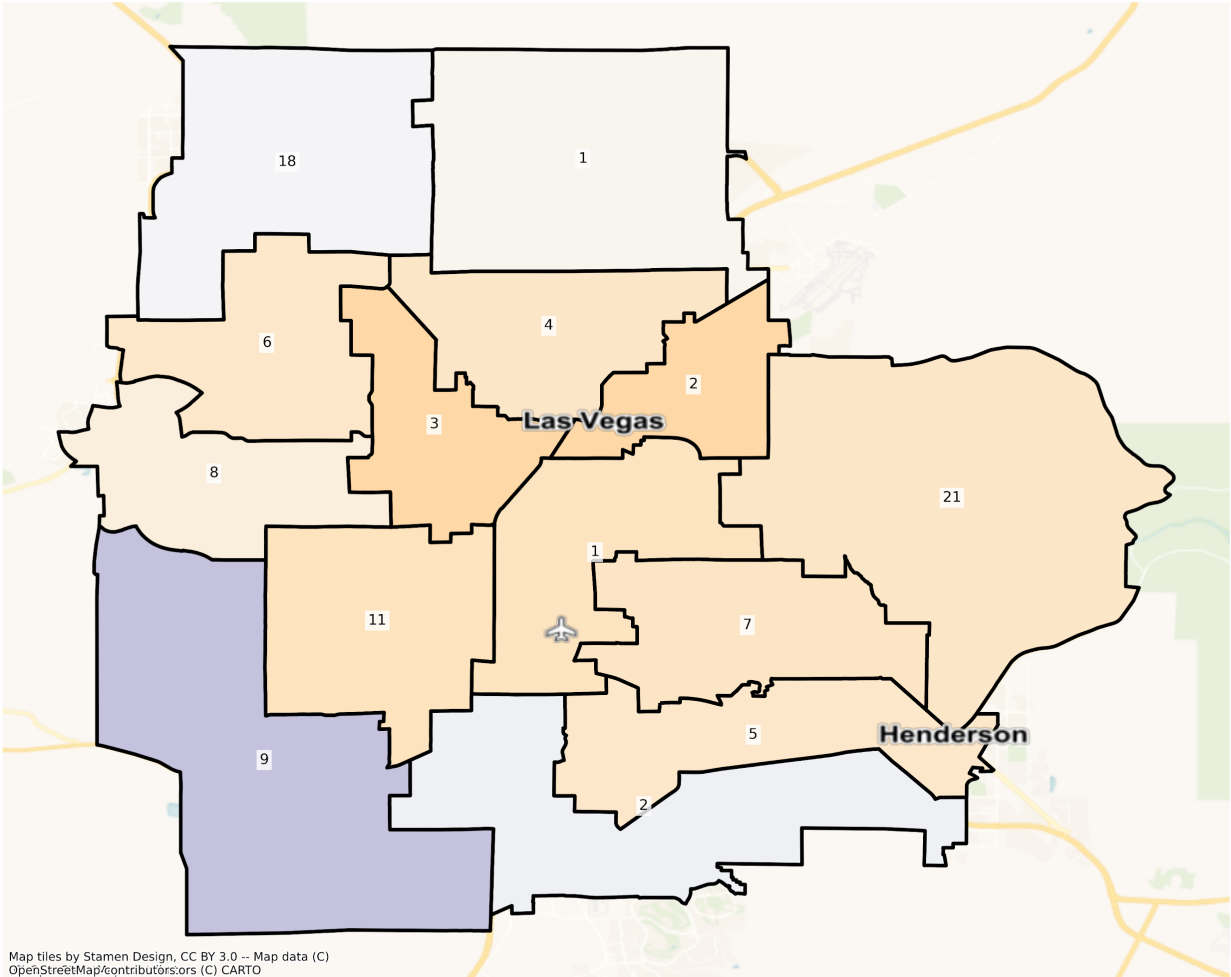


Las Vegas

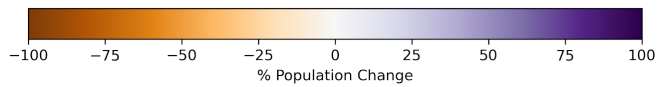
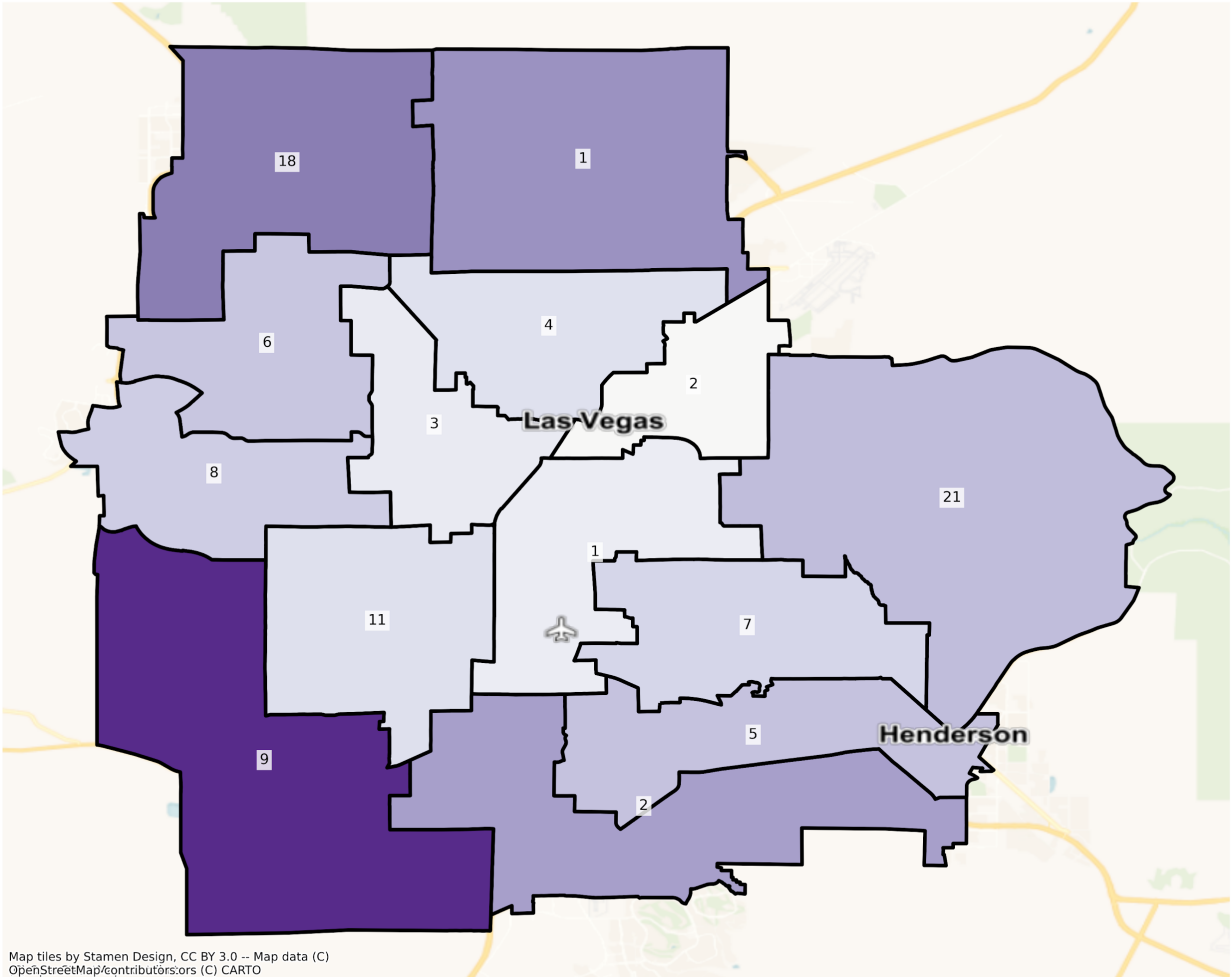
NV Las Vegas State Senate Districts
Population % Change from 2010 to 2020
Total Population



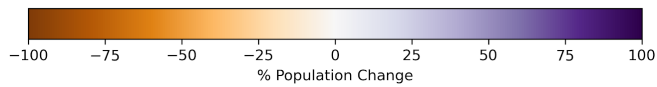
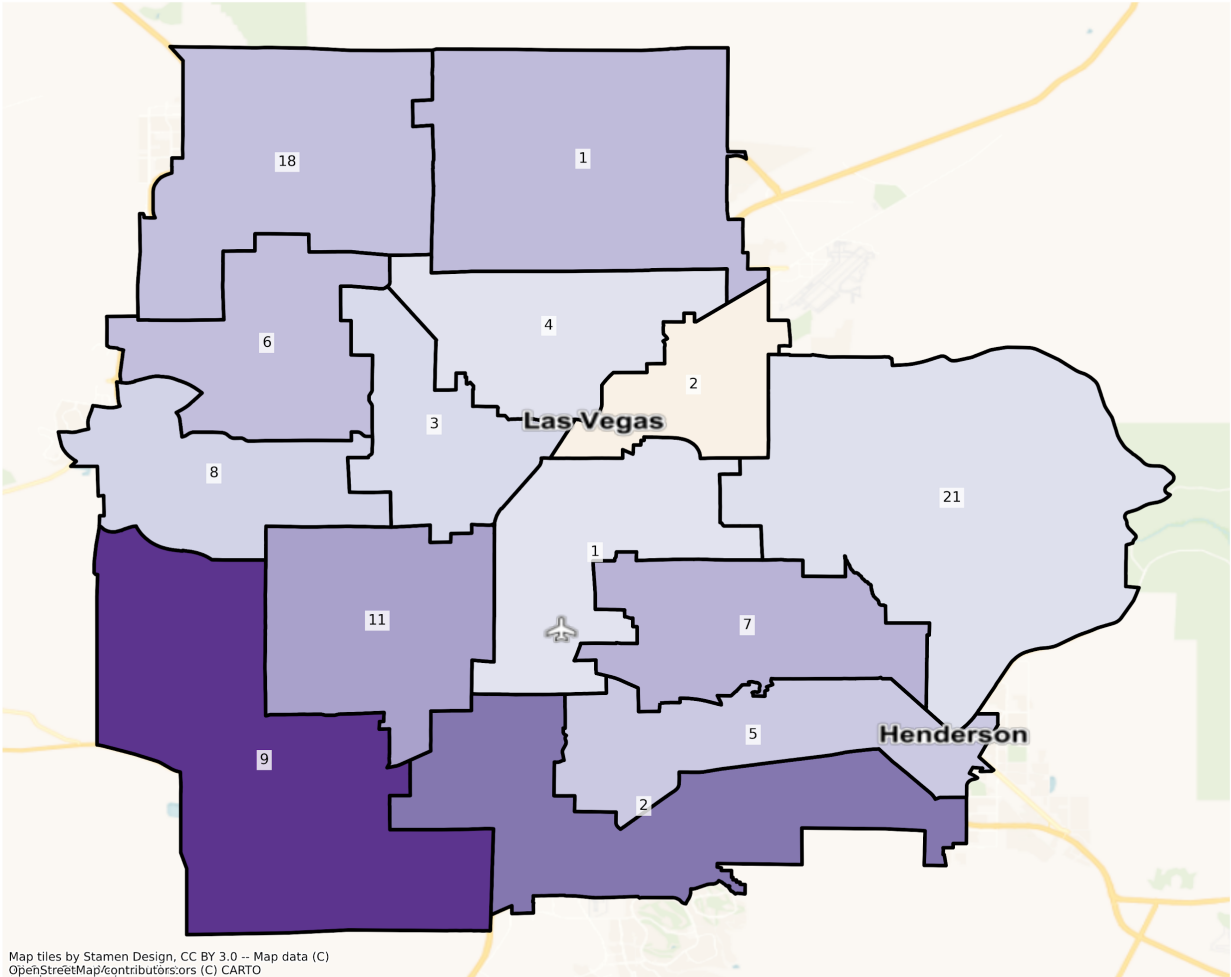
NV Las Vegas State Senate Districts
Population % Change from 2010 to 2020
Ethnicity: Not Latino White alone



NV Las Vegas State Senate Districts
Population % Change from 2010 to 2020
Ethnicity: Hispanic or Latino

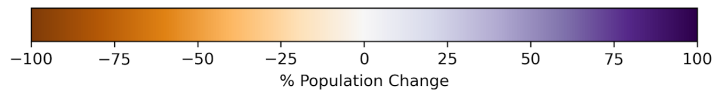
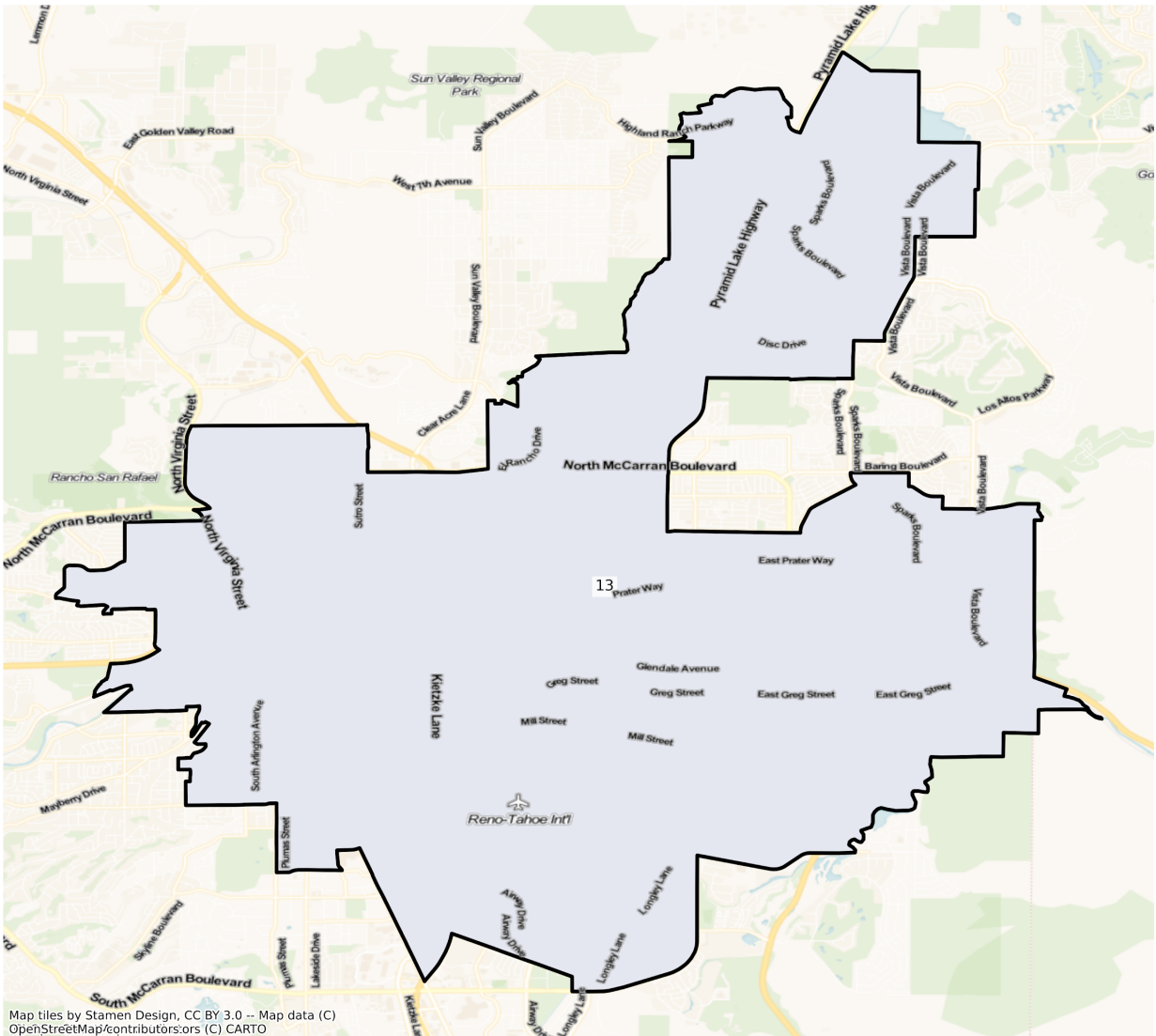


NV Las Vegas State Senate Districts
Population % Change from 2010 to 2020
Ethnicity: Not Latino Asian alone

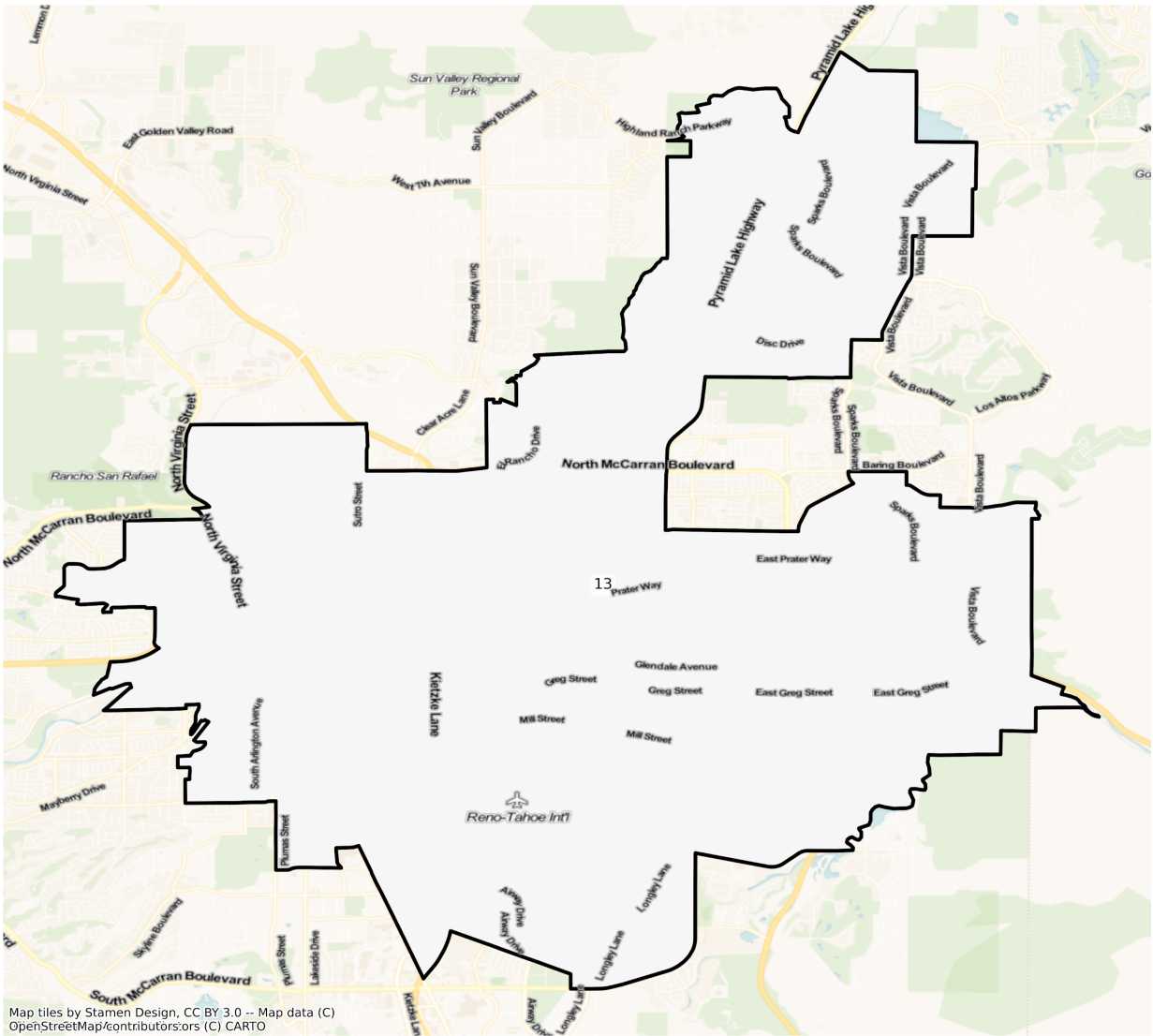


Reno

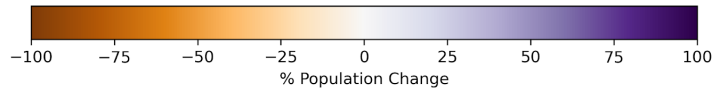
NV Reno State Senate Districts
Population % Change from 2010 to 2020
Total Population



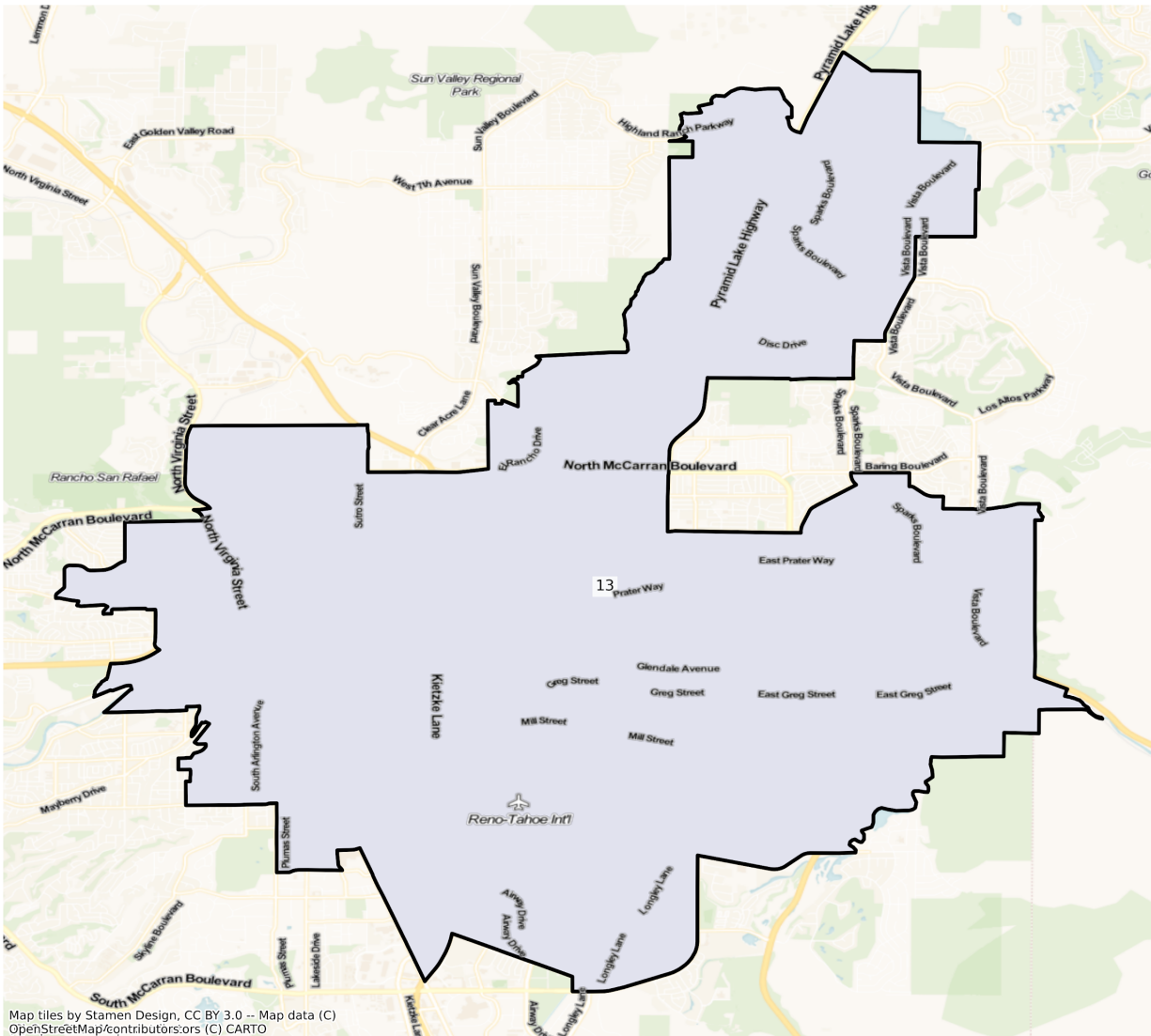
NV Reno State Senate Districts
Population % Change from 2010 to 2020
Ethnicity: Not Latino White alone



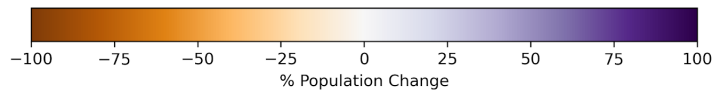
Map tiles by Stamen Design, CC BY 3.0 -- Map data (C) OpenStreetMap/contributors (C) CARTO



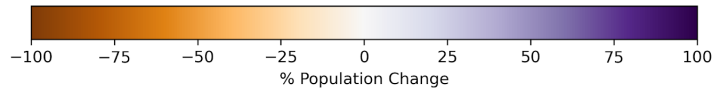
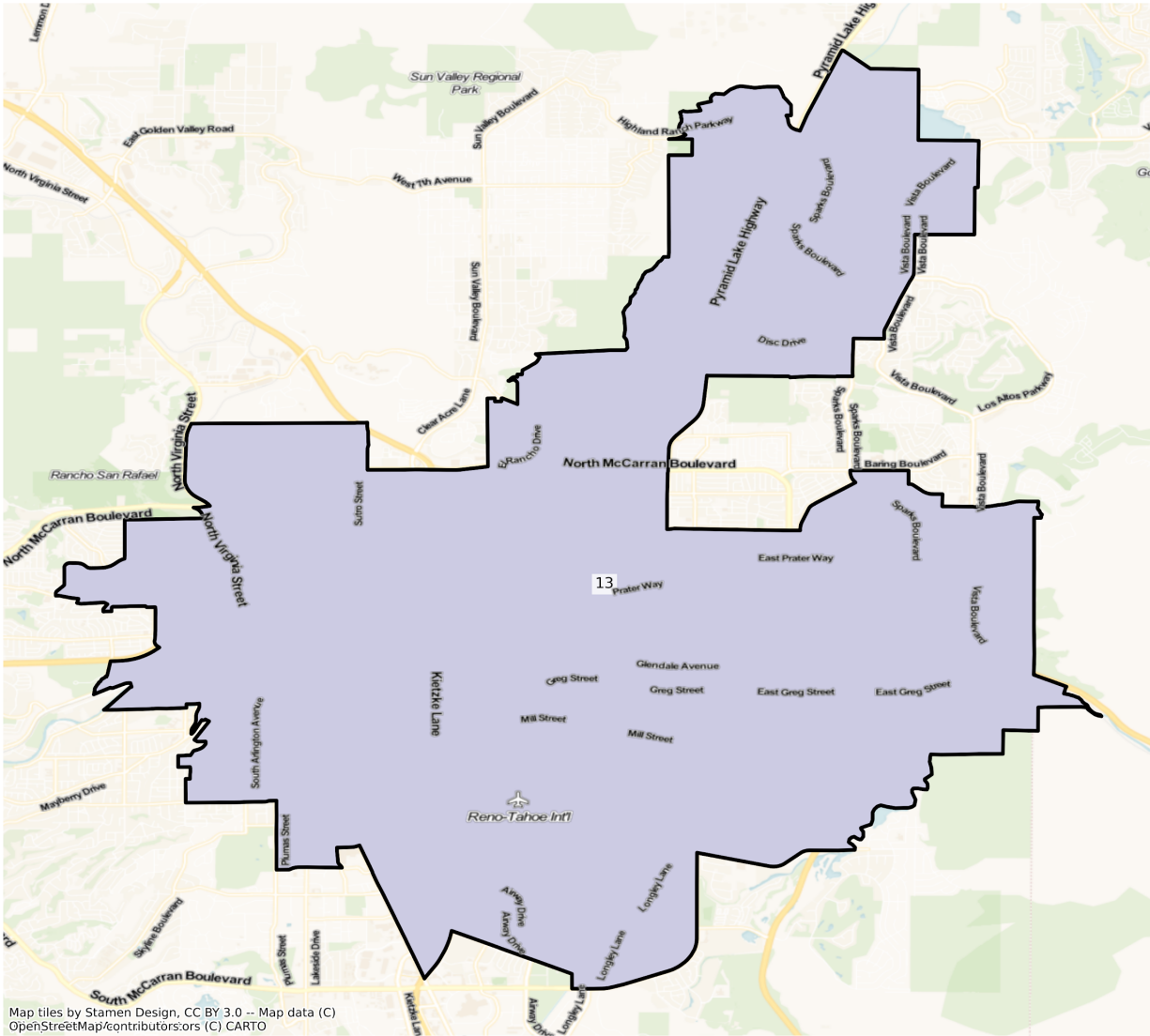
NV Reno State Senate Districts
Population % Change from 2010 to 2020
Ethnicity: Hispanic or Latino



Map tiles by Stamen Design, CC BY 3.0 -- Map data (C) OpenStreetMap/contributors (C) CARTO



NV Reno State Senate Districts
 Population % Change from 2010 to 2020
 Ethnicity: Not Latino Asian alone



2010 Population by Race and Ethnicity at State Senate District Level

DISTRICT	Total Population	Hispanic or Latino Origin	White Alone, not Latino	African American Alone, not	AIAN Alone, not Latino ¹	Asian Alone, not Latino	NHPI Alone, not Latino ²	Other Alone, not Latino	Two or More, not Latino
----------	------------------	---------------------------	-------------------------	-----------------------------	-------------------------------------	-------------------------	-------------------------------------	-------------------------	-------------------------

				Latino					
1	128,861	34,919	52,799	23,522	516	10,023	1,232	278	5,572
2	128,715	86,508	22,142	13,358	540	3,572	451	188	1,956
3	128,724	55,953	48,001	12,712	567	7,141	785	293	3,272
4	128,783	60,302	26,334	32,829	525	4,650	710	195	3,238
5	128,920	22,372	82,321	6,854	542	10,835	1,073	266	4,657
6	128,587	24,504	78,013	12,187	536	8,299	858	214	3,976
7	128,598	42,872	60,241	10,441	620	8,945	1,003	282	4,194
8	128,218	19,142	79,029	8,769	413	15,324	654	300	4,587
9	128,882	20,818	64,380	9,435	377	26,898	1,007	303	5,664
10	128,440	54,248	48,228	12,265	687	8,734	742	250	3,286
11	128,564	31,029	57,465	12,849	570	21,510	975	239	3,927
12	128,713	20,519	91,729	5,735	761	5,925	507	169	3,368
13	128,417	44,021	66,750	4,065	1,707	7,555	1,064	209	3,046
14	128,935	24,560	90,019	2,522	4,315	3,895	447	123	3,054
15	128,619	22,933	91,703	2,288	1,124	6,395	666	275	3,235
16	128,490	21,564	95,584	1,814	1,546	4,865	310	157	2,650
17	127,832	16,013	102,258	943	2,868	2,099	237	170	3,244
18	128,710	18,788	84,920	11,399	490	7,472	591	210	4,840
19	128,615	22,417	93,483	4,125	3,650	1,913	331	111	2,585
20	128,541	19,831	79,464	7,341	558	14,870	1,091	269	5,117
21	128,387	53,188	47,218	12,605	624	10,127	722	239	3,664

¹American Indian and Alaska Native Alone, Not Latino

²Native Hawaiian and Pacific Islander Alone, Not Latino

2020 Population by Race and Ethnicity at State Senate District Level

DISTRICT	Total Population	Hispanic or Latino Origin	White Alone, not Latino	African American Alone, not Latino	AIAN Alone, not Latino ¹	Asian Alone, not Latino	NHPI Alone, not Latino ²	Other Alone, not Latino	Two or More, not Latino
1	165,542	52,074	51,350	34,928	551	13,354	1,833	956	10,496
2	128,419	86,045	16,909	17,235	407	3,378	404	640	3,401

3	132,412	61,145	36,488	18,164	491	8,570	1,046	754	5,754
4	141,147	69,646	22,499	35,961	436	5,335	1,128	854	5,288
5	134,626	29,069	70,797	9,206	527	13,722	1,591	833	8,881
6	134,456	31,498	67,223	14,853	520	10,932	962	844	7,624
7	143,026	52,126	51,170	16,659	663	12,202	1,436	895	7,875
8	135,709	24,071	72,539	10,549	385	18,826	813	844	7,682
9	204,521	37,223	83,690	18,137	573	47,297	2,155	1,090	14,356
10	137,808	58,066	39,947	21,028	723	9,962	1,014	1,020	6,048
11	145,009	36,048	47,453	20,348	426	30,847	1,439	782	7,666
12	158,900	29,115	100,142	10,152	808	8,882	720	710	8,371
13	143,440	50,263	67,182	5,626	1,629	9,549	1,482	792	6,917
14	144,472	34,008	89,320	2,613	4,465	5,351	731	741	7,243
15	144,350	31,825	91,988	2,766	1,036	7,417	831	737	7,750
16	150,712	29,180	101,304	2,290	1,507	7,491	374	772	7,794
17	138,335	20,408	102,401	1,123	2,937	2,529	344	669	7,924
18	154,030	29,228	86,365	15,236	571	9,783	1,100	858	10,889
19	158,810	30,395	103,666	6,856	3,680	5,306	484	756	7,667
20	161,487	28,583	83,218	11,389	510	23,534	2,100	949	11,204
21	147,403	70,241	40,301	16,841	547	11,724	983	675	6,091

¹American Indian and Alaska Native Alone, Not Latino

²Native Hawaiian and Pacific Islander Alone, Not Latino

Percent Change in Population from 2010 to 2020 by Race and Ethnicity at State Senate District Level

DISTRICT	Total Population	Hispanic or Latino Origin	White Alone, not Latino	African American Alone, not Latino	AIAN Alone, not Latino ¹	Asian Alone, not Latino	NHPI Alone, not Latino ²	Other Alone, not Latino	Two or More, not Latino
1	28.47%	49.13%	-2.74%	48.49%	6.78%	33.23%	48.78%	243.88%	88.37%
2	-0.23%	-0.54%	-23.63%	29.02%	-24.63%	-5.43%	-10.42%	240.43%	73.88%
3	2.87%	9.28%	-23.98%	42.89%	-13.40%	20.01%	33.25%	157.34%	75.86%
4	9.60%	15.50%	-14.56%	9.54%	-16.95%	14.73%	58.87%	337.95%	63.31%
5	4.43%	29.93%	-14.00%	34.32%	-2.77%	26.65%	48.28%	213.16%	90.70%

6	4.56%	28.54%	-13.83%	21.88%	-2.99%	31.73%	12.12%	294.39%	91.75%
7	11.22%	21.59%	-15.06%	59.55%	6.94%	36.41%	43.17%	217.38%	87.77%
8	5.84%	25.75%	-8.21%	20.30%	-6.78%	22.85%	24.31%	181.33%	67.47%
9	58.69%	78.80%	29.99%	92.23%	51.99%	75.84%	114.00%	259.74%	153.46%
10	7.29%	7.04%	-17.17%	71.45%	5.24%	14.06%	36.66%	308.00%	84.05%
11	12.79%	16.18%	-17.42%	58.36%	-25.26%	43.41%	47.59%	227.20%	95.21%
12	23.45%	41.89%	9.17%	77.02%	6.18%	49.91%	42.01%	320.12%	148.55%
13	11.70%	14.18%	0.65%	38.40%	-4.57%	26.39%	39.29%	278.95%	127.08%
14	12.05%	38.47%	-0.78%	3.61%	3.48%	37.38%	63.53%	502.44%	137.16%
15	12.23%	38.77%	0.31%	20.89%	-7.83%	15.98%	24.77%	168.00%	139.57%
16	17.29%	35.32%	5.98%	26.24%	-2.52%	53.98%	20.65%	391.72%	194.11%
17	8.22%	27.45%	0.14%	19.09%	2.41%	20.49%	45.15%	293.53%	144.27%
18	19.67%	55.57%	1.70%	33.66%	16.53%	30.93%	86.13%	308.57%	124.98%
19	23.48%	35.59%	10.89%	66.21%	0.82%	177.37%	46.22%	581.08%	196.60%
20	25.63%	44.13%	4.72%	55.14%	-8.60%	58.26%	92.48%	252.79%	118.96%
21	14.81%	32.06%	-14.65%	33.61%	-12.34%	15.77%	36.15%	182.43%	66.24%

¹American Indian and Alaska Native Alone, Not Latino

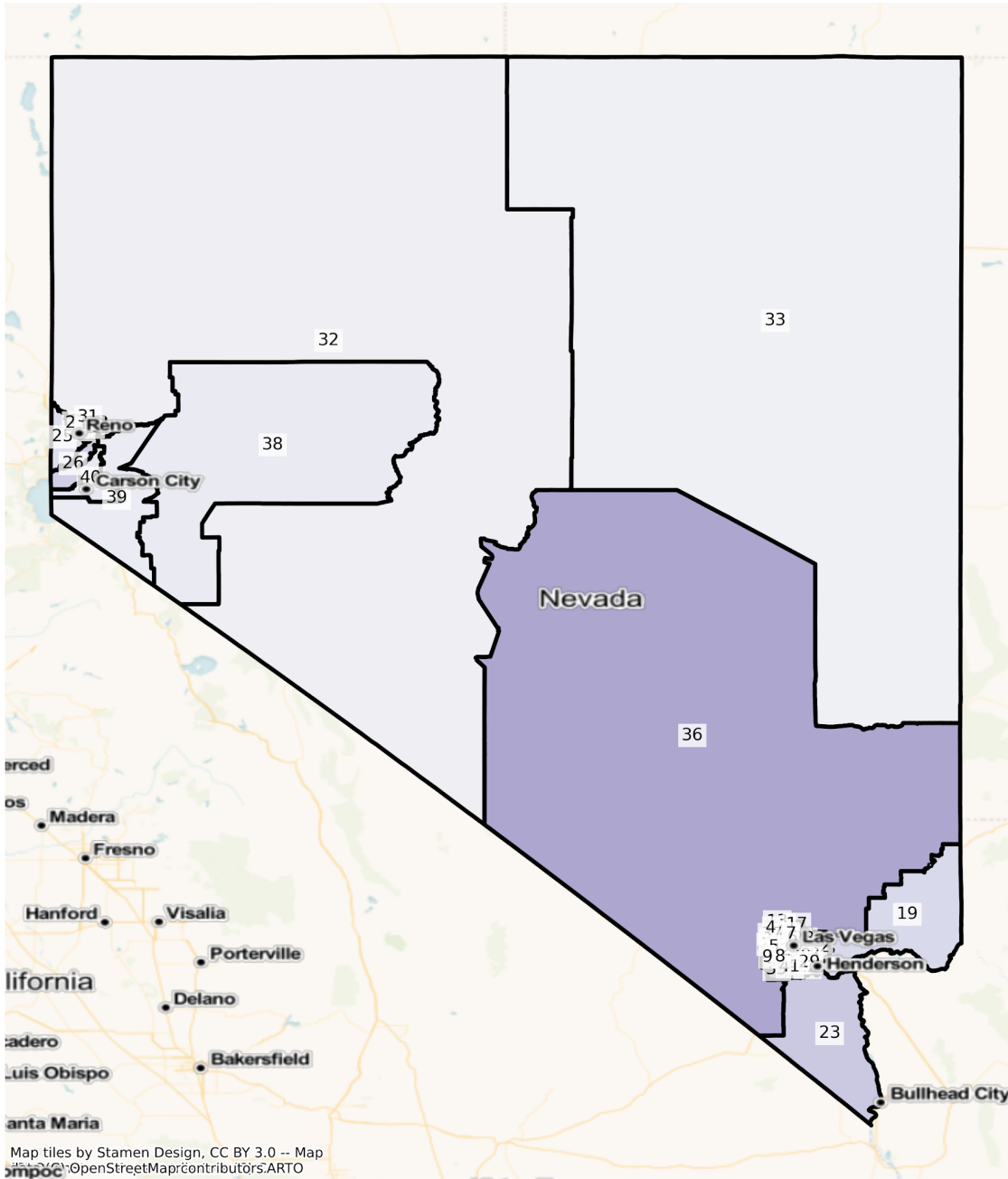
²Native Hawaiian and Pacific Islander Alone, Not Latino

State Assembly

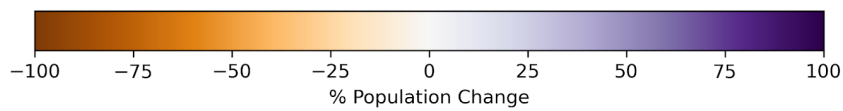
The charts below display the percent change in population from 2010 to 2020 for the listed group. Please note that the color bars are fixed to be from -100% to 100% and these maps are displayed in brown to purple. If the percent change in population was outside of this range, the color scheme changes to red to green to indicate a change.

Total Population

NV State Assembly Districts
Population % Change from 2010 to 2020
Total Population



Map tiles by Stamen Design, CC BY 3.0 -- Map data by OpenStreetMap contributors, ARTO



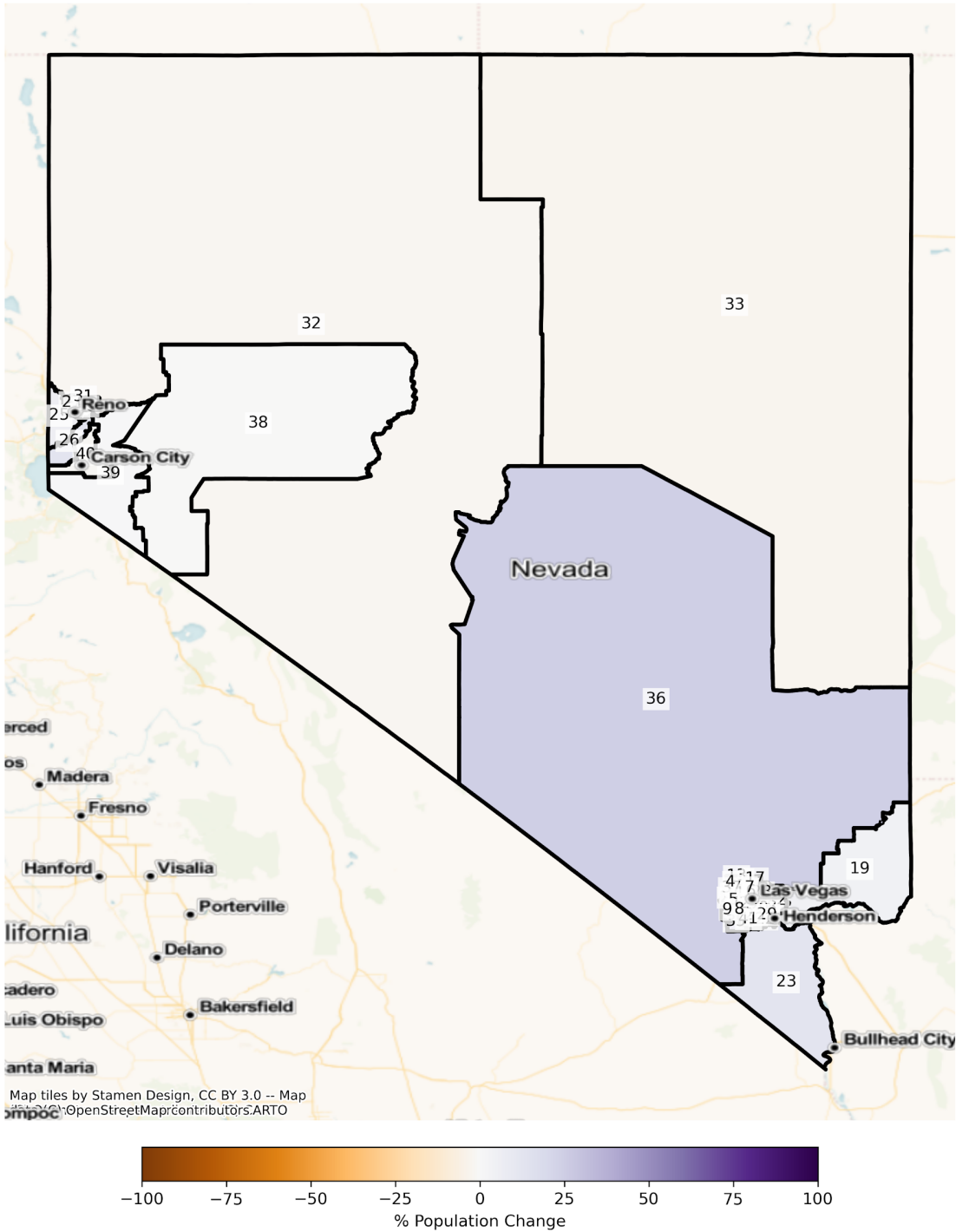
Total Population from 2010 to 2020 at State Assembly District Level

DISTRICT	Total Population 2010	Total Population 2020	Total Population % Change
1	64,549	78,671	21.88%
2	64,218	69,552	8.31%
3	64,342	67,382	4.72%
4	64,547	82,747	28.20%
5	64,000	66,157	3.37%
6	64,309	69,404	7.92%
7	64,474	71,743	11.27%
8	64,149	80,629	25.69%
9	64,511	99,766	54.65%
10	64,382	65,030	1.01%
11	64,434	60,829	-5.59%
12	64,333	81,845	27.22%
13	64,163	71,283	11.10%
14	64,054	65,558	2.35%
15	64,359	69,581	8.11%
16	64,081	68,227	6.47%
17	64,312	86,871	35.08%
18	64,294	75,561	17.52%
19	64,498	77,238	19.75%
20	64,304	67,465	4.92%
21	64,340	60,849	-5.43%
22	64,518	76,512	18.59%
23	64,215	81,662	27.17%
24	64,285	69,668	8.37%
25	64,127	74,251	15.79%
26	64,301	79,912	24.28%
27	64,492	70,099	8.69%
28	64,281	67,590	5.15%
29	64,580	73,777	14.24%

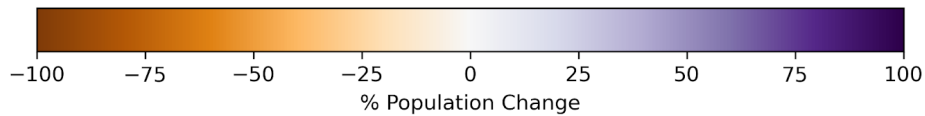
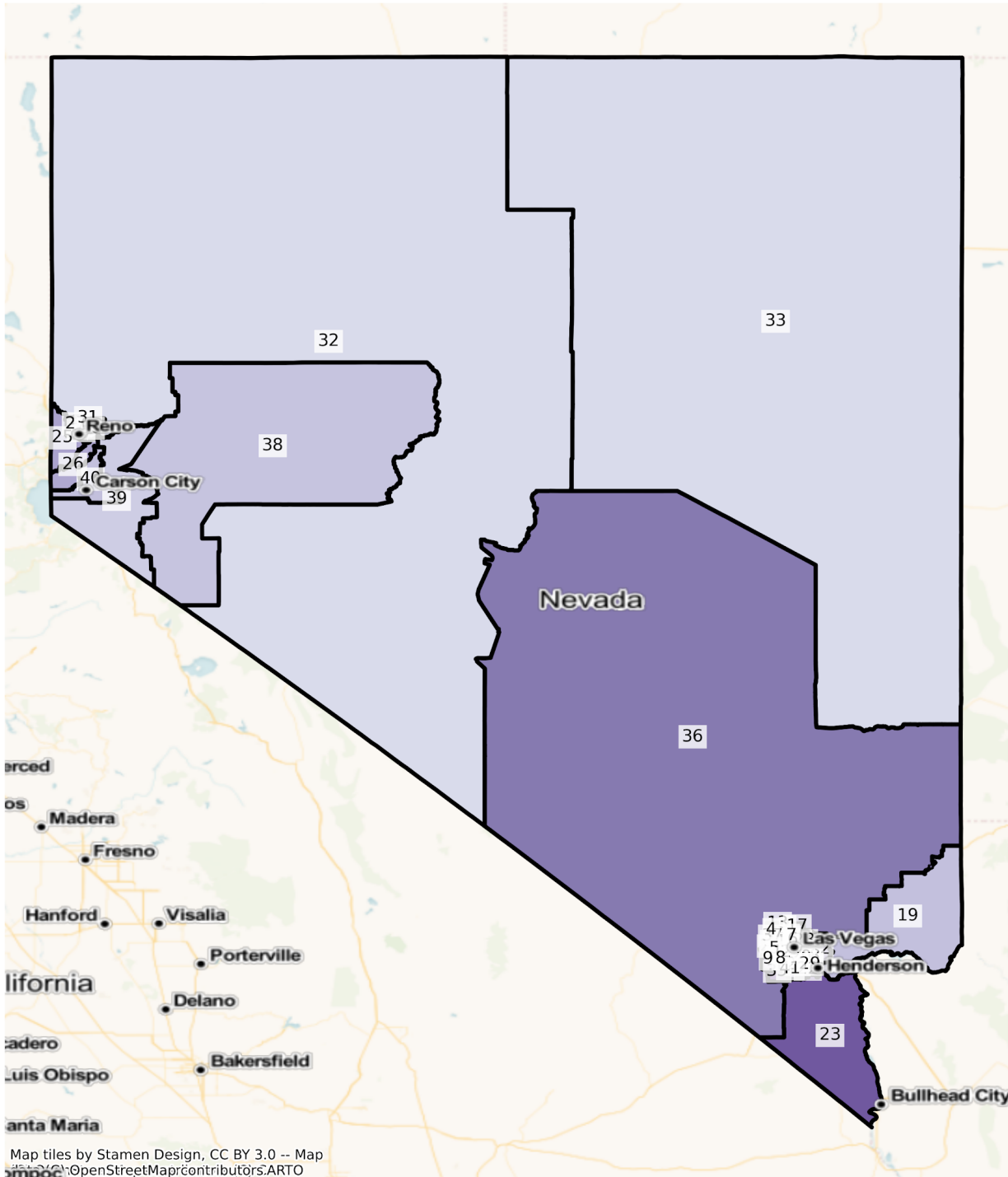
30	64,132	73,772	15.03%
31	64,463	76,207	18.22%
32	64,472	68,265	5.88%
33	64,448	67,861	5.30%
34	64,225	67,878	5.69%
35	64,371	104,755	62.74%
36	64,167	90,949	41.74%
37	64,362	66,578	3.44%
38	63,773	69,353	8.75%
39	64,059	68,982	7.69%
40	64,189	70,800	10.30%
41	64,023	84,975	32.73%
42	64,415	64,380	-0.05%

Population by Race and Ethnicity

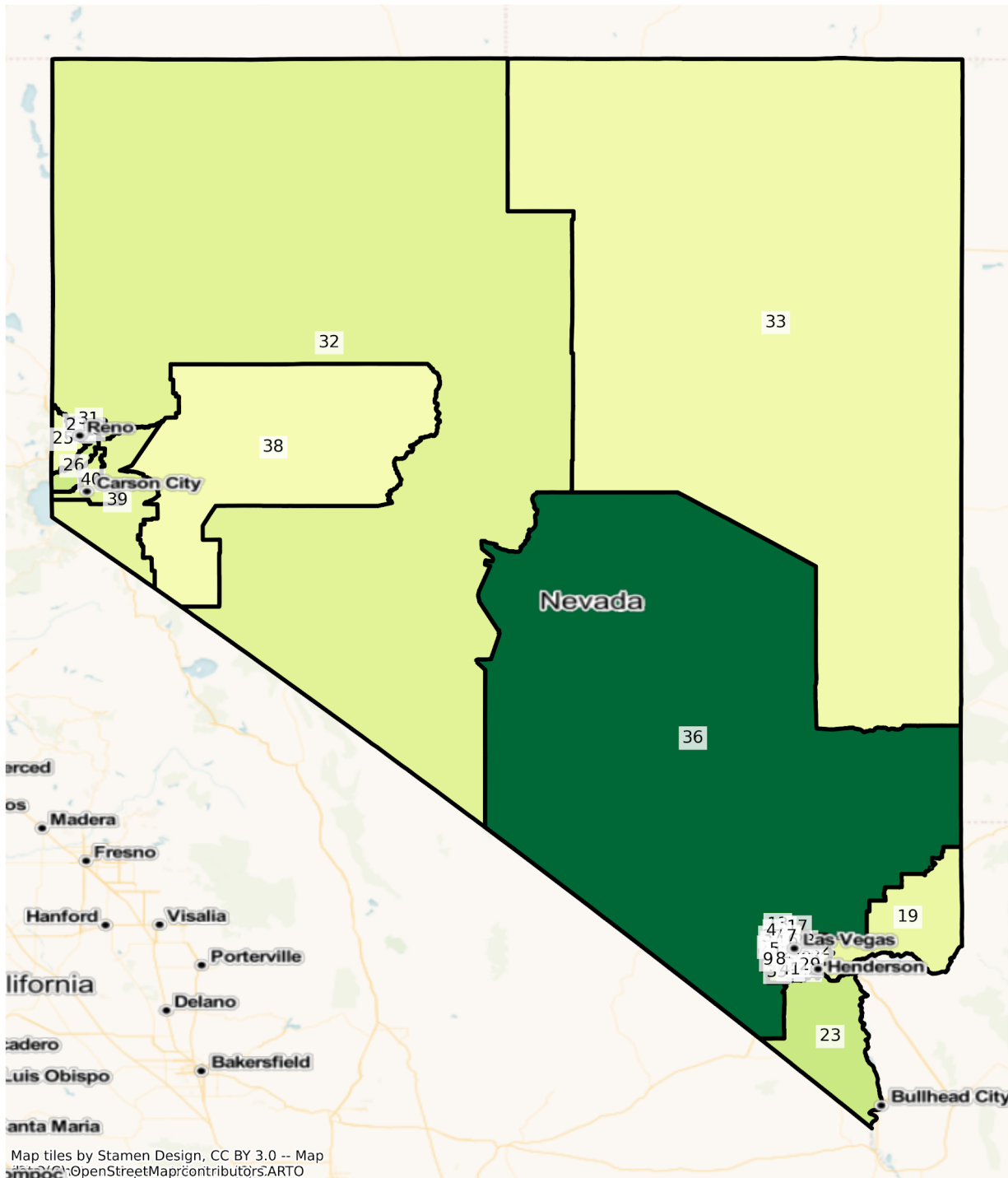
NV State Assembly Districts
Population % Change from 2010 to 2020
Ethnicity: Not Latino White alone



NV State Assembly Districts
 Population % Change from 2010 to 2020
 Ethnicity: Hispanic or Latino

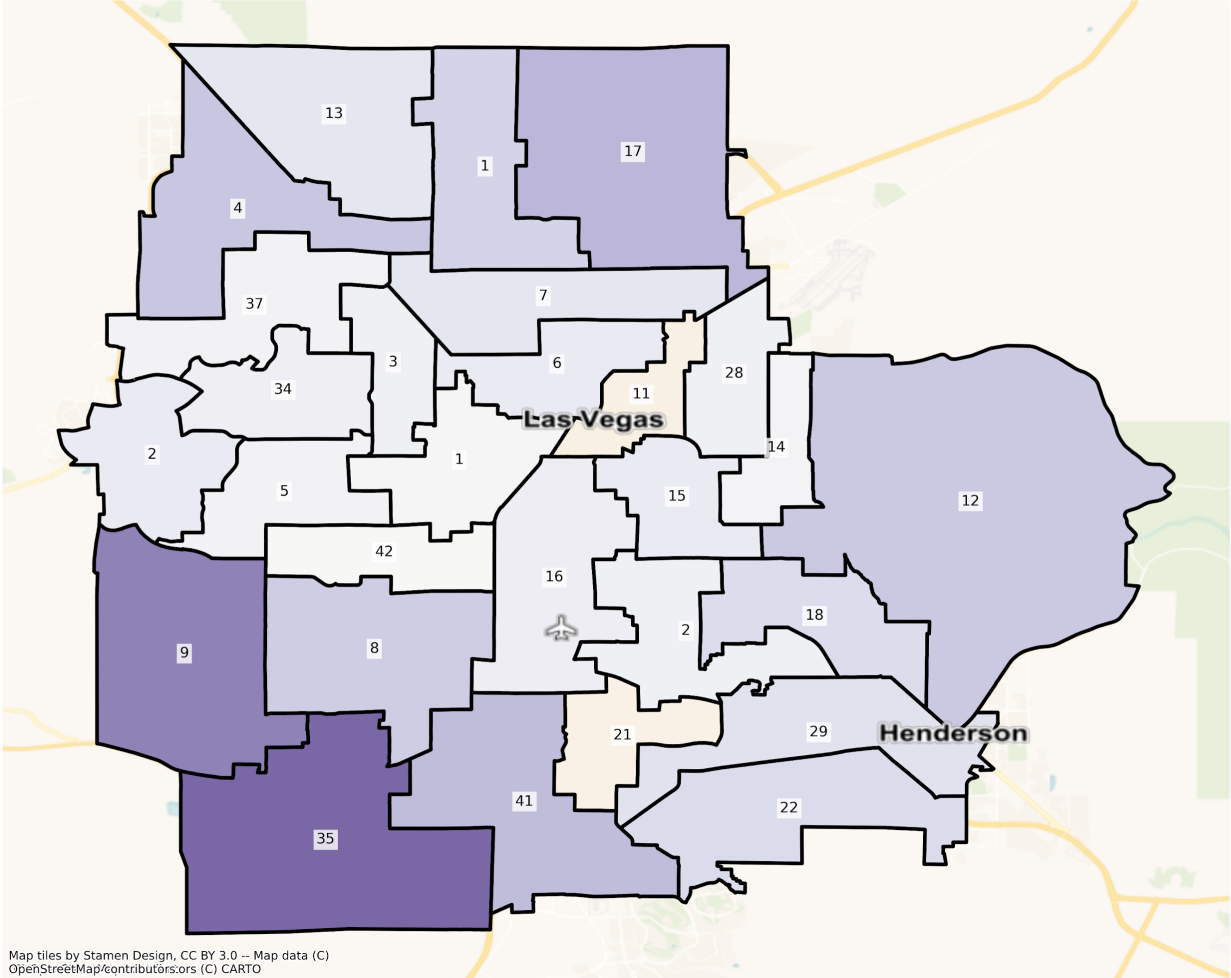


NV State Assembly Districts
 Population % Change from 2010 to 2020
 Ethnicity: Not Latino Asian alone

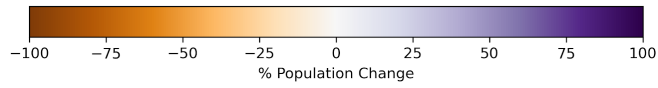


Las Vegas

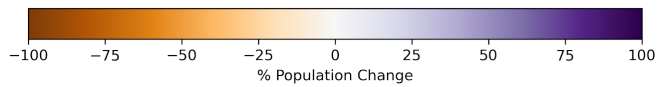
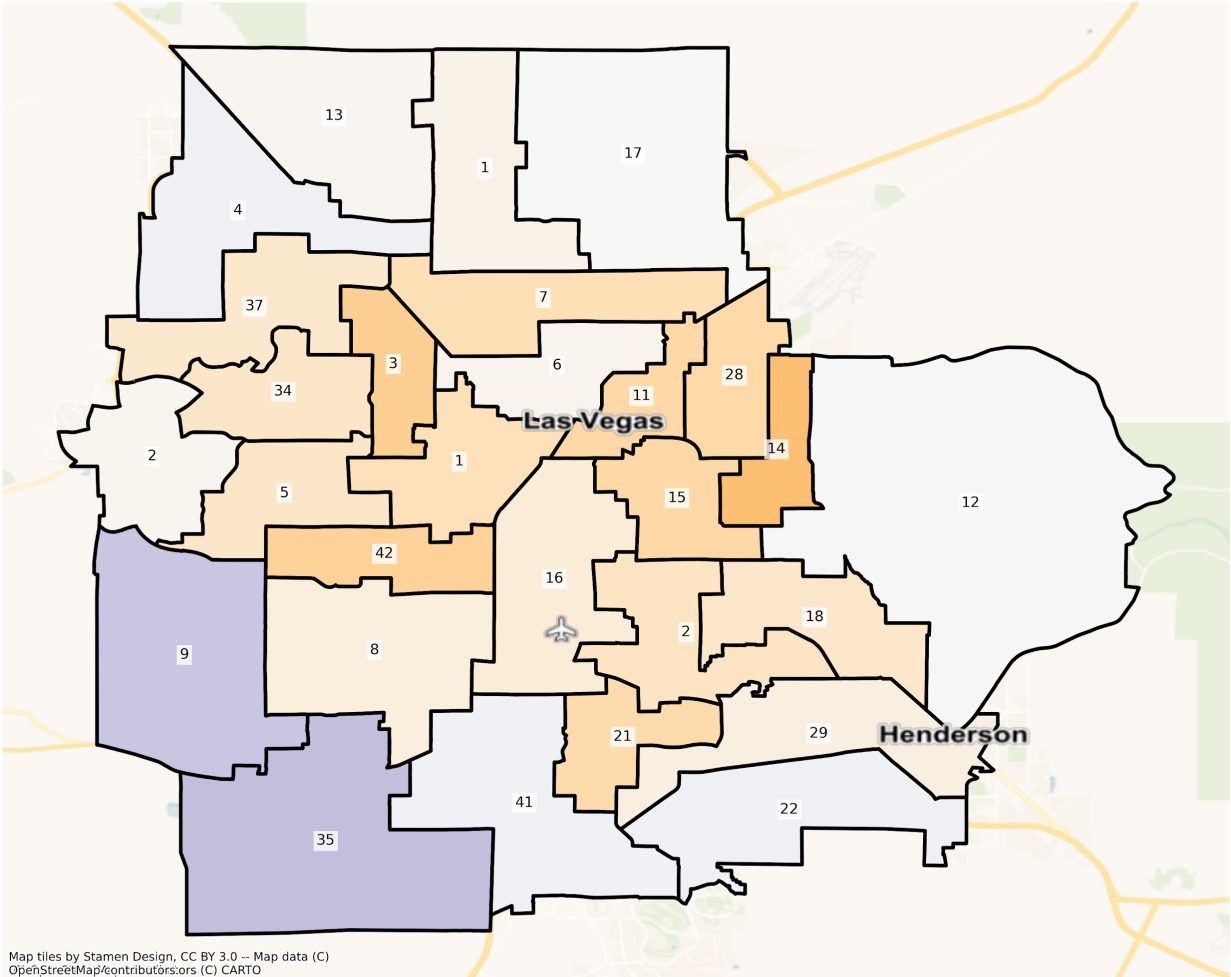
NV Las Vegas State Assembly Districts
Population % Change from 2010 to 2020
Total Population



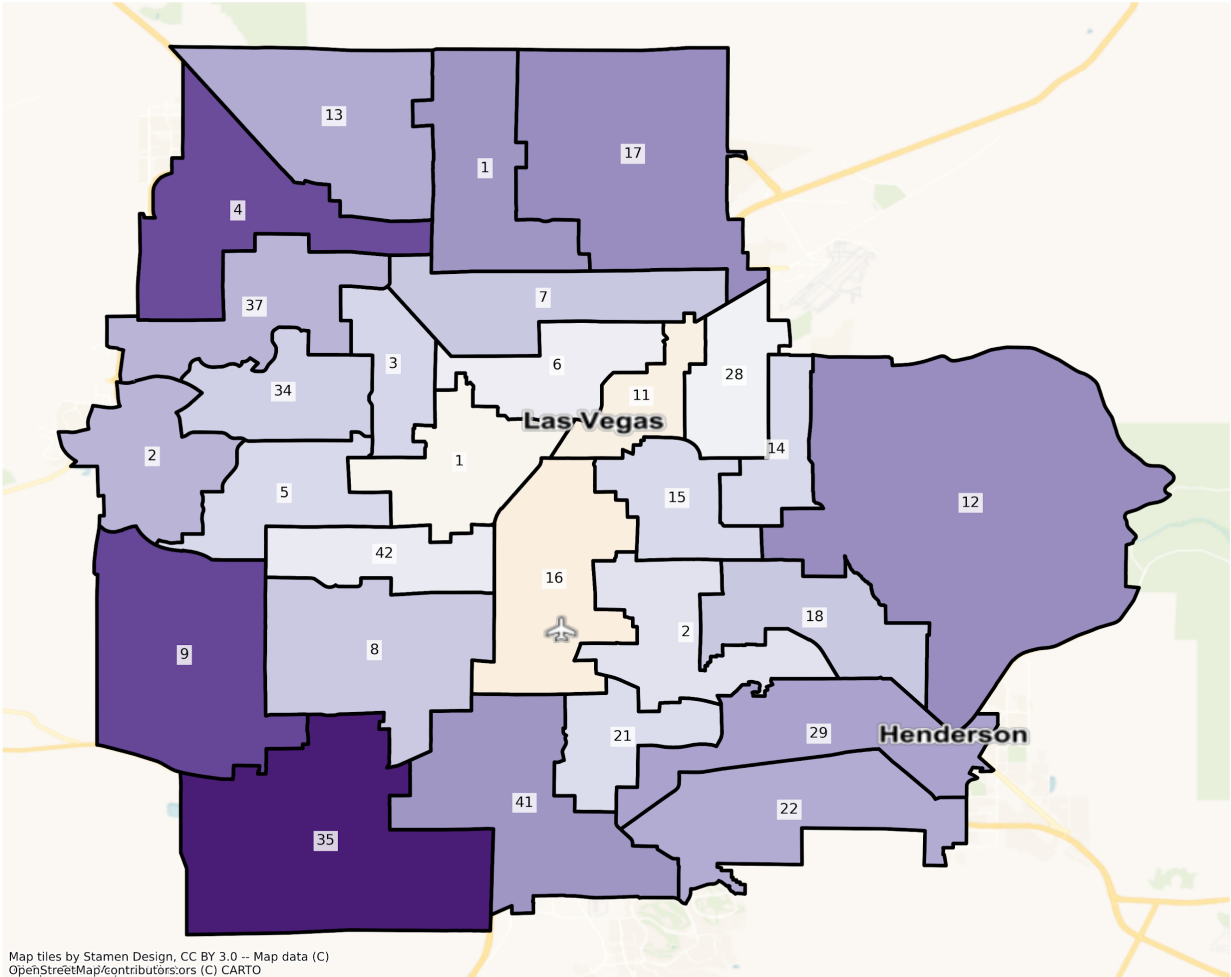
Map tiles by Stamen Design, CC BY 3.0 -- Map data (C)
OpenStreetMap/contributors/ors (C) CARTO



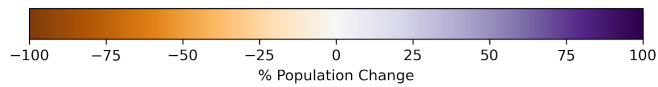
NV Las Vegas State Assembly Districts
Population % Change from 2010 to 2020
Ethnicity: Not Latino White alone



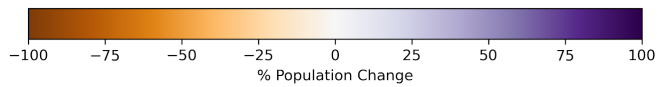
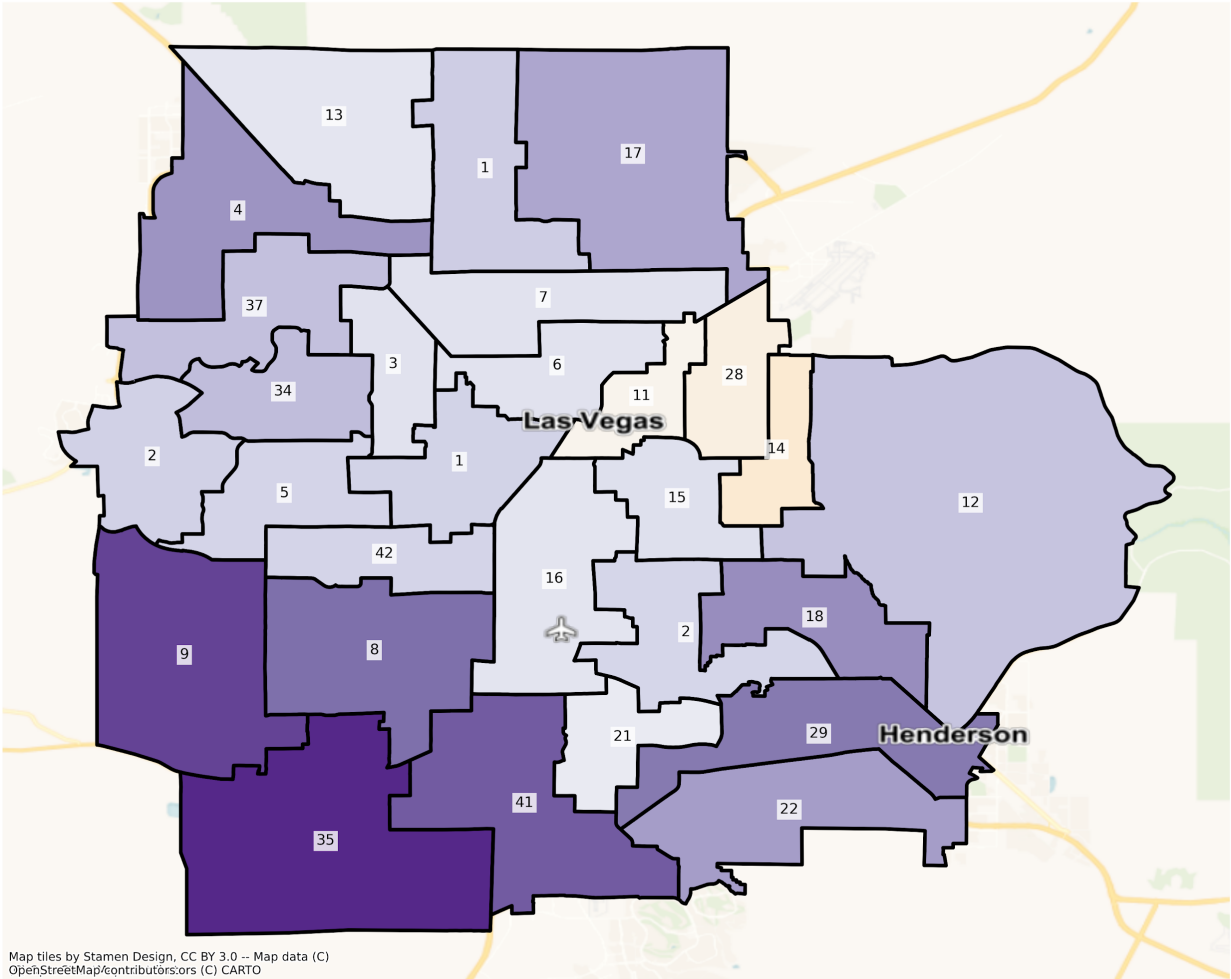
NV Las Vegas State Assembly Districts
Population % Change from 2010 to 2020
Ethnicity: Hispanic or Latino



Map tiles by Stamen Design, CC BY 3.0 -- Map data (C)
OpenStreetMap/contributors/ors (C) CARTO

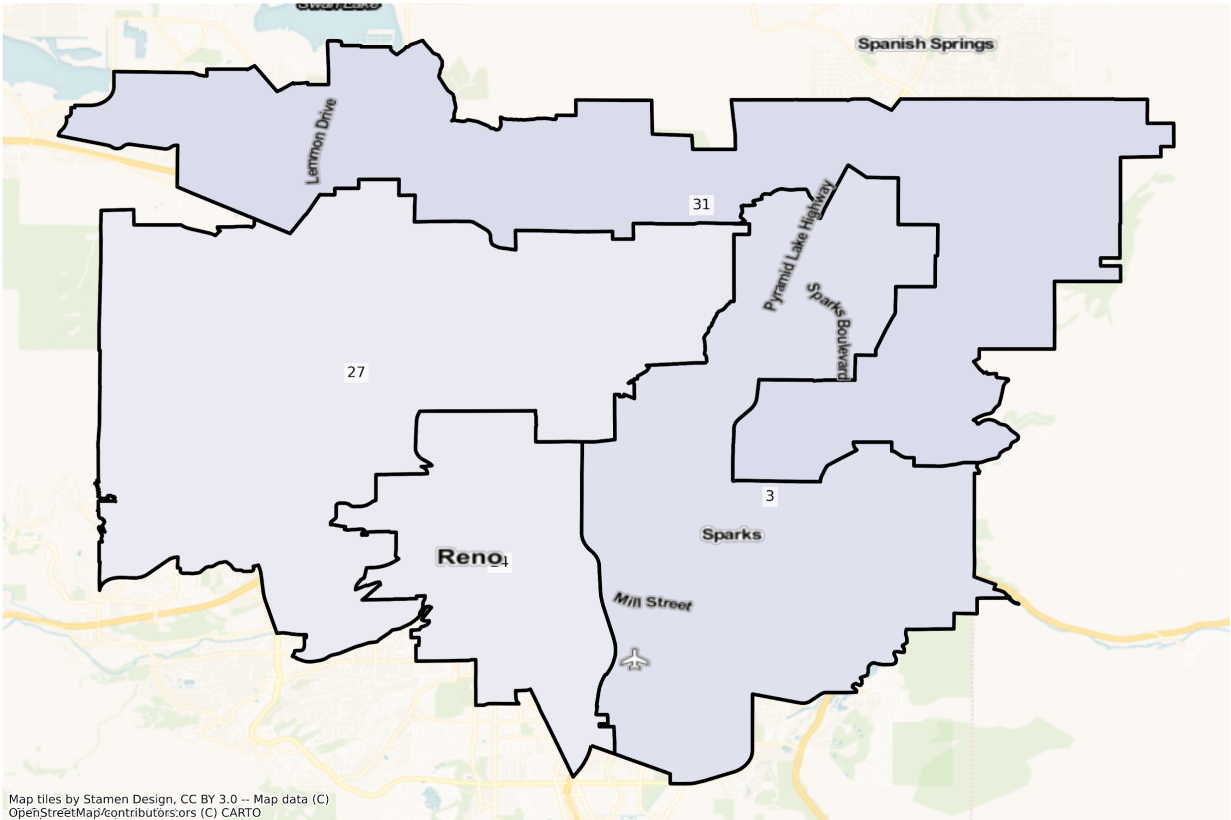


NV Las Vegas State Assembly Districts
Population % Change from 2010 to 2020
Ethnicity: Not Latino Asian alone

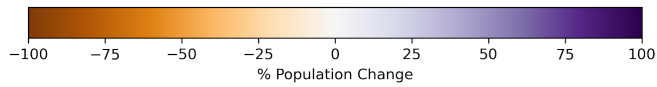


Reno

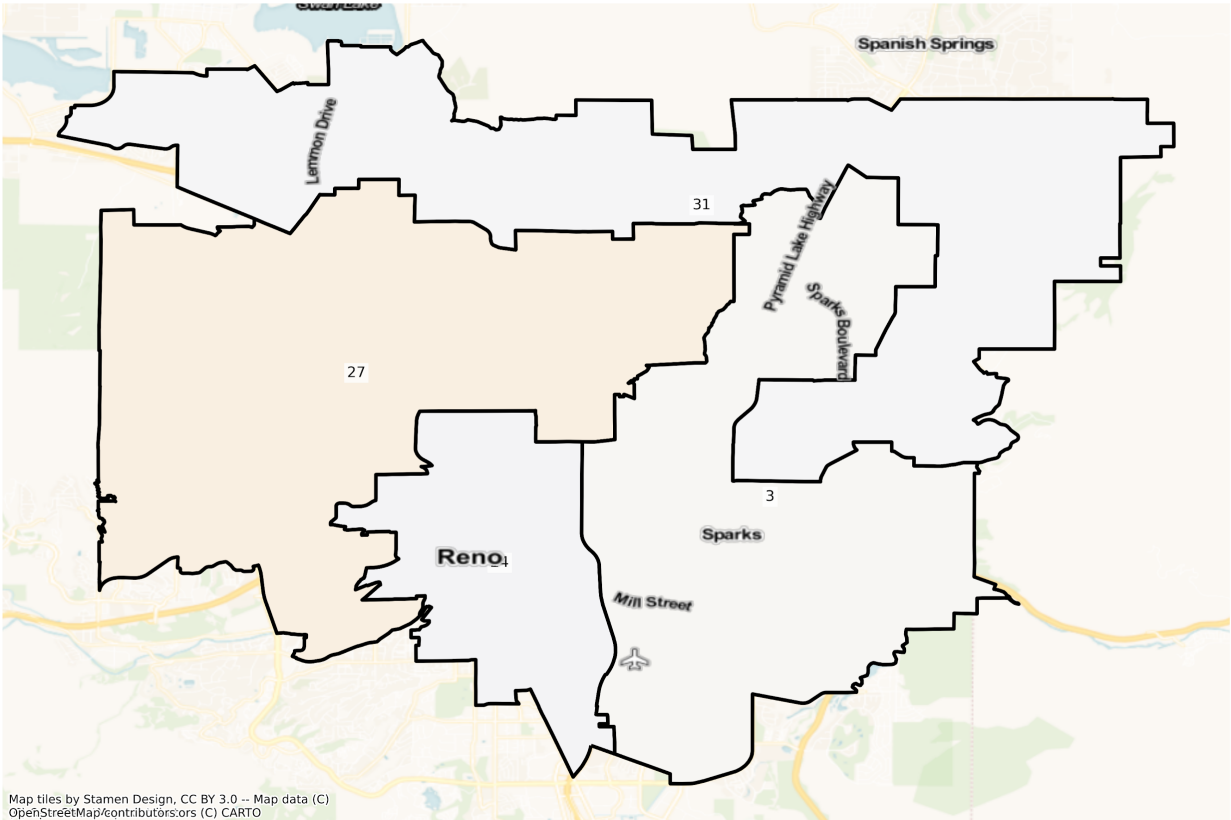
NV Reno State Assembly Districts
Population % Change from 2010 to 2020
Total Population



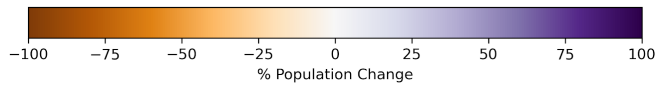
Map tiles by Stamen Design, CC BY 3.0 -- Map data (C)
OpenStreetMap/contributors,ors (C) CARTO



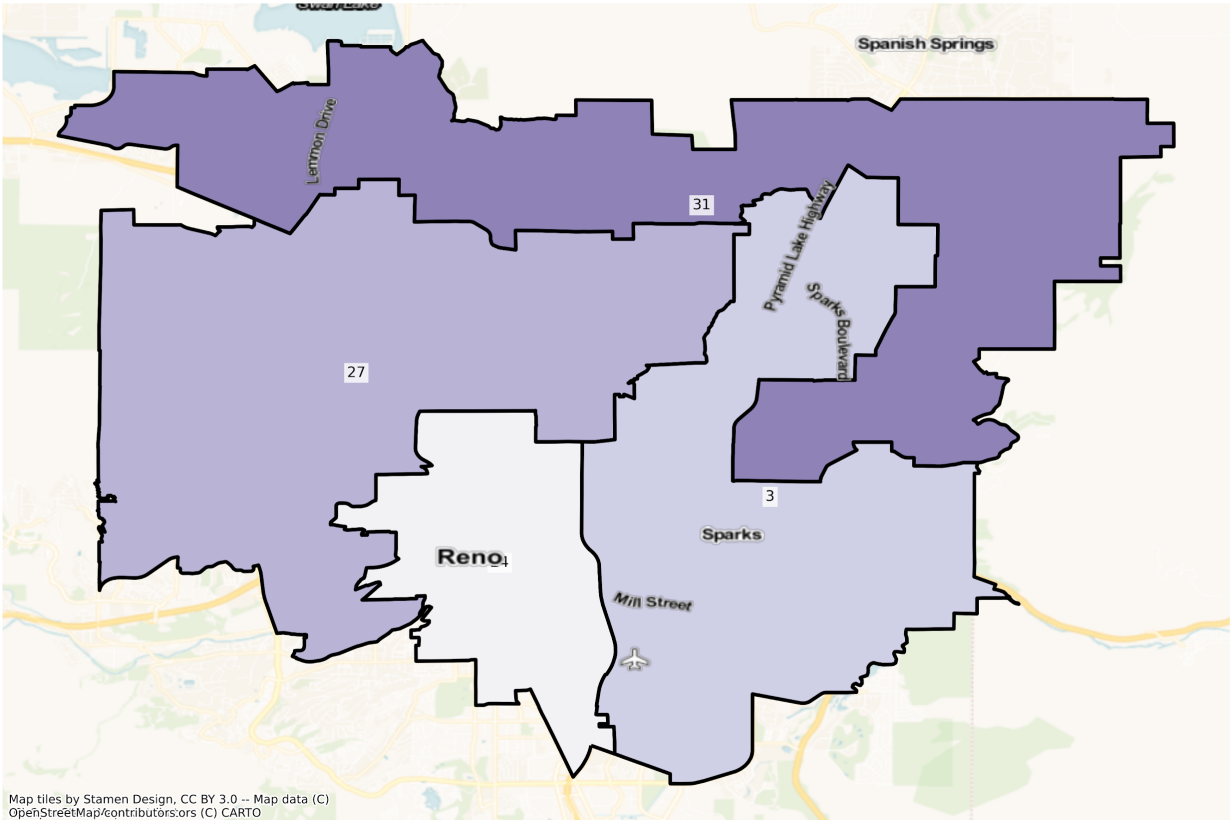
NV Reno State Assembly Districts
Population % Change from 2010 to 2020
Ethnicity: Not Latino White alone



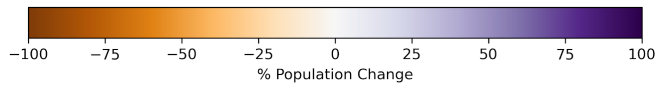
Map tiles by Stamen Design, CC BY 3.0 -- Map data (C)
OpenStreetMap/contributors,ors (C) CARTO



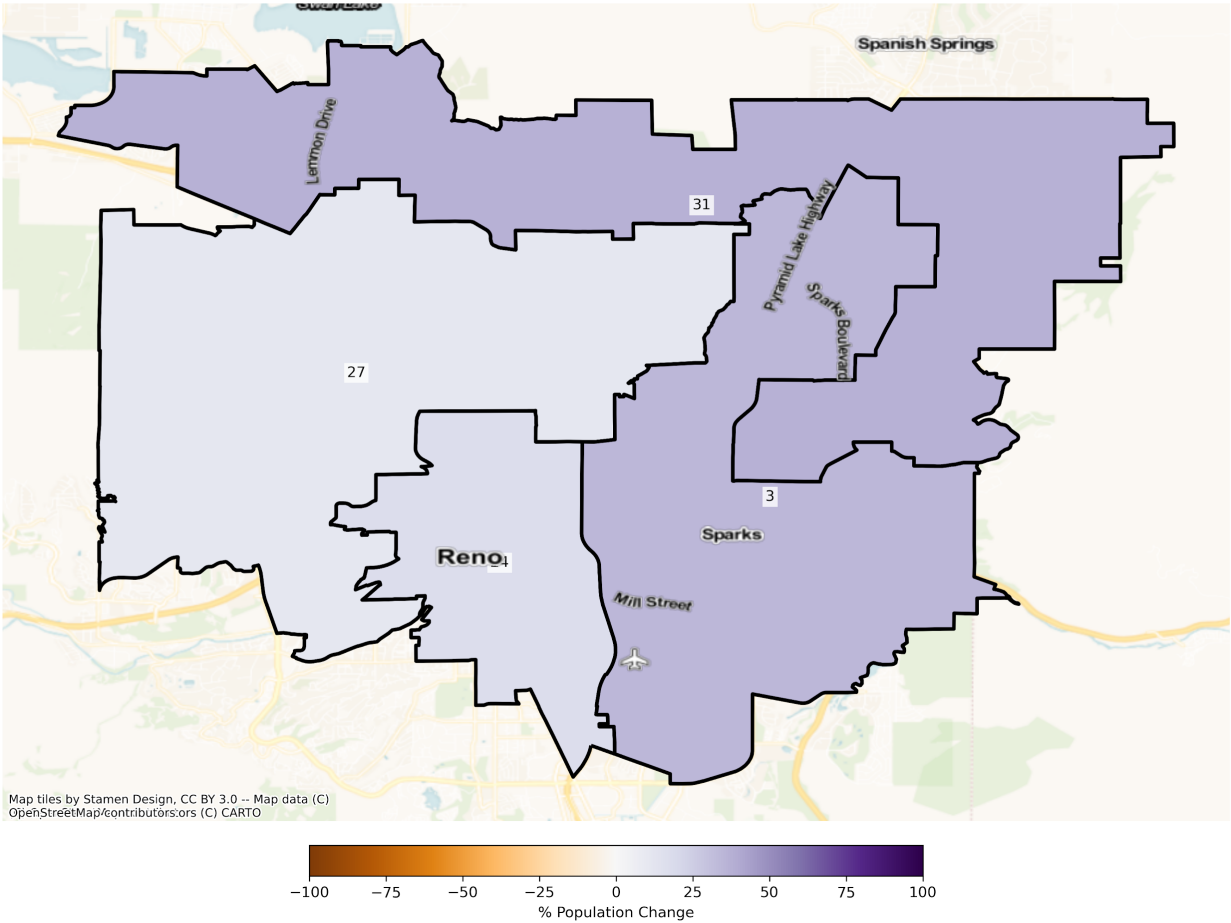
NV Reno State Assembly Districts
Population % Change from 2010 to 2020
Ethnicity: Hispanic or Latino



Map tiles by Stamen Design, CC BY 3.0 -- Map data (C)
OpenStreetMap/contributors,ors (C) CARTO



NV Reno State Assembly Districts
 Population % Change from 2010 to 2020
 Ethnicity: Not Latino Asian alone



2010 Population by Race and Ethnicity at State Assembly District Level

DISTRICT	Total Population	Hispanic or Latino Origin	White Alone, not Latino	African American Alone, not Latino	AIAN Alone, not Latino ¹	Asian Alone, not Latino	NHPI Alone, not Latino ²	Other Alone, not Latino	Two or More, not Latino
1	64,549	15,330	30,156	10,285	248	5,099	568	140	2,723
2	64,218	7,027	42,977	3,424	185	7,794	289	153	2,369
3	64,342	27,472	24,772	7,116	328	2,397	368	136	1,753
4	64,547	9,618	42,126	5,841	259	3,927	286	88	2,402
5	64,000	12,115	36,052	5,345	228	7,530	365	147	2,218

6	64,309	34,736	8,146	18,258	261	1,436	222	97	1,153
7	64,474	25,566	18,188	14,571	264	3,214	488	98	2,085
8	64,149	12,588	29,838	6,602	302	11,959	497	131	2,232
9	64,511	10,241	32,548	5,256	190	12,854	537	173	2,712
10	64,382	28,481	23,229	5,596	239	4,744	417	157	1,519
11	64,434	43,623	11,101	6,569	291	1,652	233	95	870
12	64,333	21,213	27,822	5,744	308	6,692	324	132	2,098
13	64,163	9,170	42,794	5,558	231	3,545	305	122	2,438
14	64,054	31,975	19,396	6,861	316	3,435	398	107	1,566
15	64,359	28,705	25,262	4,992	366	3,173	331	106	1,424
16	64,081	25,543	22,966	7,273	321	5,561	411	144	1,862
17	64,312	19,589	22,643	13,237	268	4,924	664	138	2,849
18	64,294	23,460	28,054	5,160	329	4,619	432	148	2,092
19	64,498	14,338	41,586	4,082	431	1,976	325	84	1,676
20	64,304	19,412	32,187	5,281	291	4,326	571	134	2,102
21	64,340	11,452	38,877	3,638	217	6,872	697	125	2,462
22	64,518	8,078	45,613	2,536	226	5,347	347	129	2,242
23	64,215	6,181	50,143	1,653	330	3,949	182	85	1,692
24	64,285	21,844	33,201	2,299	992	3,680	581	126	1,562
25	64,127	8,095	49,637	978	463	3,061	241	138	1,514
26	64,301	9,250	48,569	774	385	3,584	197	83	1,459
27	64,492	14,838	42,066	1,310	661	3,334	425	137	1,721
28	64,281	42,885	11,041	6,789	249	1,920	218	93	1,086
29	64,580	10,920	43,444	3,216	325	3,963	376	141	2,195
30	64,132	22,177	33,549	1,766	715	3,875	483	83	1,484
31	64,463	13,525	43,737	1,396	598	3,066	278	75	1,788
32	64,472	11,035	46,282	1,126	3,717	829	169	48	1,266
33	64,448	12,937	46,199	837	2,753	575	75	39	1,033
34	64,225	15,246	34,525	6,866	301	4,481	518	137	2,151
35	64,371	10,577	31,832	4,179	187	14,044	470	130	2,952
36	64,167	9,480	47,284	3,288	897	1,338	256	72	1,552

37	64,362	9,258	43,488	5,321	235	3,818	340	77	1,825
38	63,773	8,568	49,388	663	1,915	1,156	150	88	1,845
39	64,059	7,445	52,870	280	953	943	87	82	1,399
40	64,189	12,314	47,015	1,040	1,161	1,281	113	74	1,191
41	64,023	11,753	33,851	4,805	332	9,523	744	140	2,875
42	64,415	18,441	27,627	6,247	268	9,551	478	108	1,695

¹American Indian and Alaska Native Alone, Not Latino

²Native Hawaiian and Pacific Islander Alone, Not Latino

2020 Population by Race and Ethnicity at State Assembly District Level

DISTRICT	Total Population	Hispanic or Latino Origin	White Alone, not Latino	African American Alone, not Latino	AIAN Alone, not Latino ¹	Asian Alone, not Latino	NHPI Alone, not Latino ²	Other Alone, not Latino	Two or More, not Latino
1	78,671	22,586	28,772	14,306	260	6,389	882	431	5,045
2	69,552	9,502	41,754	3,695	170	9,621	318	417	4,075
3	67,382	33,374	17,784	9,463	242	2,739	498	362	2,920
4	82,747	16,339	44,397	8,978	301	5,810	581	445	5,896
5	66,157	14,569	30,785	6,854	215	9,205	495	427	3,607
6	69,404	36,977	7,878	19,645	258	1,645	505	435	2,061
7	71,743	32,669	14,621	16,316	178	3,690	623	419	3,227
8	80,629	15,974	27,330	11,880	271	19,157	855	456	4,706
9	99,766	17,582	41,845	9,812	261	22,140	930	563	6,633
10	65,030	27,771	18,704	8,701	249	5,831	548	392	2,834
11	60,829	41,154	8,435	7,618	189	1,589	190	282	1,372
12	81,845	31,890	27,910	8,210	293	8,674	592	363	3,913
13	71,283	12,889	41,968	6,258	270	3,973	519	413	4,993
14	65,558	38,351	12,391	8,631	254	3,050	391	312	2,178
15	69,581	34,488	19,196	8,144	347	3,679	534	473	2,720
16	68,227	23,578	20,751	12,884	376	6,283	480	547	3,328
17	86,871	29,488	22,578	20,622	291	6,965	951	525	5,451
18	75,561	29,890	24,176	8,824	316	6,939	801	454	4,161

19	77,238	18,783	43,491	7,225	475	2,493	439	352	3,980
20	67,465	22,236	26,994	7,835	347	5,263	635	441	3,714
21	60,849	13,496	30,311	4,112	200	7,486	843	355	4,046
22	76,512	11,282	47,866	3,667	230	7,756	460	453	4,798
23	81,662	10,332	56,651	2,927	333	6,389	281	358	4,391
24	69,668	22,596	34,078	3,121	952	4,327	655	482	3,457
25	74,251	11,562	52,554	1,191	438	3,718	356	398	4,034
26	79,912	13,021	54,831	1,119	370	5,712	244	404	4,211
27	70,099	20,263	39,434	1,575	598	3,699	475	339	3,716
28	67,590	44,891	8,474	9,617	218	1,789	214	358	2,029
29	73,777	15,573	40,486	5,094	327	6,236	748	478	4,835
30	73,772	27,667	33,104	2,505	677	5,222	827	310	3,460
31	76,207	20,860	44,118	1,598	571	4,214	518	348	3,980
32	68,265	13,148	45,202	1,015	3,894	1,137	213	393	3,263
33	67,861	15,448	44,781	1,098	2,773	679	114	280	2,688
34	67,878	18,947	29,440	8,282	274	5,926	567	476	3,966
35	104,755	19,641	41,845	8,325	312	25,157	1,225	527	7,723
36	90,949	14,947	58,885	5,758	907	4,627	370	476	4,979
37	66,578	12,551	37,783	6,571	246	5,006	395	368	3,658
38	69,353	11,056	49,180	835	1,924	1,294	217	334	4,513
39	68,982	9,352	53,221	288	1,013	1,235	127	335	3,411
40	70,800	16,159	46,473	1,171	1,137	1,779	130	368	3,583
41	84,975	17,301	35,352	7,722	280	15,778	1,640	496	6,406
42	64,380	20,074	20,123	8,468	155	11,690	584	326	2,960

¹American Indian and Alaska Native Alone, Not Latino

²Native Hawaiian and Pacific Islander Alone, Not Latino

Percent Change in Population from 2010 to 2020 by Race and Ethnicity at State Assembly District Level

DISTRICT	Total Population	Hispanic or Latino Origin	White Alone, not Latino	African American Alone, not Latino	AIAN Alone, not Latino ¹	Asian Alone, not Latino	NHPI Alone, not Latino ²	Other Alone, not Latino	Two or More, not Latino
----------	------------------	---------------------------	-------------------------	------------------------------------	-------------------------------------	-------------------------	-------------------------------------	-------------------------	-------------------------

1	21.88%	47.33%	-4.59%	39.10%	4.84%	25.30%	55.28%	207.86%	85.27%
2	8.31%	35.22%	-2.85%	7.91%	-8.11%	23.44%	10.03%	172.55%	72.01%
3	4.72%	21.48%	-28.21%	32.98%	-26.22%	14.27%	35.33%	166.18%	66.57%
4	28.20%	69.88%	5.39%	53.71%	16.22%	47.95%	103.15%	405.68%	145.46%
5	3.37%	20.26%	-14.61%	28.23%	-5.70%	22.24%	35.62%	190.48%	62.62%
6	7.92%	6.45%	-3.29%	7.60%	-1.15%	14.55%	127.48%	348.45%	78.75%
7	11.27%	27.78%	-19.61%	11.98%	-32.58%	14.81%	27.66%	327.55%	54.77%
8	25.69%	26.90%	-8.41%	79.95%	-10.26%	60.19%	72.03%	248.09%	110.84%
9	54.65%	71.68%	28.56%	86.68%	37.37%	72.24%	73.18%	225.43%	144.58%
10	1.01%	-2.49%	-19.48%	55.49%	4.18%	22.91%	31.41%	149.68%	86.57%
11	-5.59%	-5.66%	-24.02%	15.97%	-35.05%	-3.81%	-18.45%	196.84%	57.70%
12	27.22%	50.33%	0.32%	42.93%	-4.87%	29.62%	82.72%	175.00%	86.51%
13	11.10%	40.56%	-1.93%	12.59%	16.88%	12.07%	70.16%	238.52%	104.80%
14	2.35%	19.94%	-36.12%	25.80%	-19.62%	-11.21%	-1.76%	191.59%	39.08%
15	8.11%	20.15%	-24.01%	63.14%	-5.19%	15.95%	61.33%	346.23%	91.01%
16	6.47%	-7.69%	-9.64%	77.15%	17.13%	12.98%	16.79%	279.86%	78.73%
17	35.08%	50.53%	-0.29%	55.79%	8.58%	41.45%	43.22%	280.43%	91.33%
18	17.52%	27.41%	-13.82%	71.01%	-3.95%	50.23%	85.42%	206.76%	98.90%
19	19.75%	31.00%	4.58%	77.00%	10.21%	26.16%	35.08%	319.05%	137.47%
20	4.92%	14.55%	-16.13%	48.36%	19.24%	21.66%	11.21%	229.10%	76.69%
21	-5.43%	17.85%	-22.03%	13.03%	-7.83%	8.93%	20.95%	184.00%	64.34%
22	18.59%	39.66%	4.94%	44.60%	1.77%	45.05%	32.56%	251.16%	114.01%
23	27.17%	67.16%	12.98%	77.07%	0.91%	61.79%	54.40%	321.18%	159.52%
24	8.37%	3.44%	2.64%	35.75%	-4.03%	17.58%	12.74%	282.54%	121.32%
25	15.79%	42.83%	5.88%	21.78%	-5.40%	21.46%	47.72%	188.41%	166.45%
26	24.28%	40.77%	12.89%	44.57%	-3.90%	59.38%	23.86%	386.75%	188.62%
27	8.69%	36.56%	-6.26%	20.23%	-9.53%	10.95%	11.76%	147.45%	115.92%
28	5.15%	4.68%	-23.25%	41.66%	-12.45%	-6.82%	-1.83%	284.95%	86.83%
29	14.24%	42.61%	-6.81%	58.40%	0.62%	57.36%	98.94%	239.01%	120.27%
30	15.03%	24.76%	-1.33%	41.85%	-5.31%	34.76%	71.22%	273.49%	133.15%
31	18.22%	54.23%	0.87%	14.47%	-4.52%	37.44%	86.33%	364.00%	122.60%

32	5.88%	19.15%	-2.33%	-9.86%	4.76%	37.15%	26.04%	718.75%	157.74%
33	5.30%	19.41%	-3.07%	31.18%	0.73%	18.09%	52.00%	617.95%	160.21%
34	5.69%	24.28%	-14.73%	20.62%	-8.97%	32.25%	9.46%	247.45%	84.38%
35	62.74%	85.70%	31.46%	99.21%	66.84%	79.13%	160.64%	305.38%	161.62%
36	41.74%	57.67%	24.53%	75.12%	1.11%	245.81%	44.53%	561.11%	220.81%
37	3.44%	35.57%	-13.12%	23.49%	4.68%	31.12%	16.18%	377.92%	100.44%
38	8.75%	29.04%	-0.42%	25.94%	0.47%	11.94%	44.67%	279.55%	144.61%
39	7.69%	25.61%	0.66%	2.86%	6.30%	30.97%	45.98%	308.54%	143.82%
40	10.30%	31.22%	-1.15%	12.60%	-2.07%	38.88%	15.04%	397.30%	200.84%
41	32.73%	47.20%	4.43%	60.71%	-15.66%	65.68%	120.43%	254.29%	122.82%
42	-0.05%	8.86%	-27.16%	35.55%	-42.16%	22.40%	22.18%	201.85%	74.63%

¹American Indian and Alaska Native Alone, Not Latino

²Native Hawaiian and Pacific Islander Alone, Not Latino

Variable definitions

District shapefiles were retrieved from the Redistricting Data Hub, All About Redistricting, and the U.S. Census. The list of variables below can be found in the P1 and P2 table of the PL 94-171. Data was retrieved from the Redistricting Data Hub processed legacy file of the PL 94-171.

Variable Name in Report	Census Variable Reference
Total Population	P0010001
Hispanic or Latino Origin	P0020002
White Alone, not Latino	P0020005
African American Alone, not Latino	P0020006
American Indian and Alaska Native Alone, not Latino	P0020007
Asian Alone, not Latino	P0020008
Native Hawaiian and Pacific Islander Alone, not Latino	P0020009
Other Alone, not Latino	P0020010
Two or More, not Latino	P0020011