

HAYSTAQ DNA

Georgia

Overview	2
Congressional	2
Total Population	3
Population by Race and Ethnicity	5
State Senate	11
Total Population	12
Population by Race and Ethnicity	15
Atlanta	19
State House	29
Total Population	30
Population by Race and Ethnicity	37
Atlanta	40
Variable definitions	63

Overview

Georgia's population gained just over a million people, up 10.57% this decade. Despite this Georgia's congressional delegation will remain at 14 members following reapportionment. Georgia experienced growth in its capital of Atlanta, and the surrounding suburbs and piedmont region. The southern regions of the state experienced heavy population loss.

Georgia's White population decreased by .96%. This resulted in their share of the overall state population falling from 55.88% to 50.06%. The South Fulton area located just south of Atlanta saw its white population slide as they moved closer to the city. Whites continued to move from rural areas to the Atlanta metropolitan area.

The African American population in the state grew by 12.62% this past decade. The majority of the growth occurred in Atlanta and the surrounding suburban areas, but extended across the state. Their make up of the state remained unchanged from 30.05% to 30.60%. While few rural areas witnessed their African American population decrease, many saw growth.

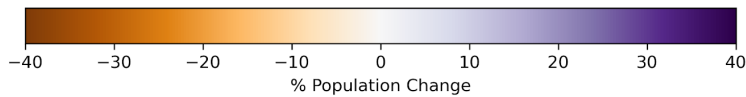
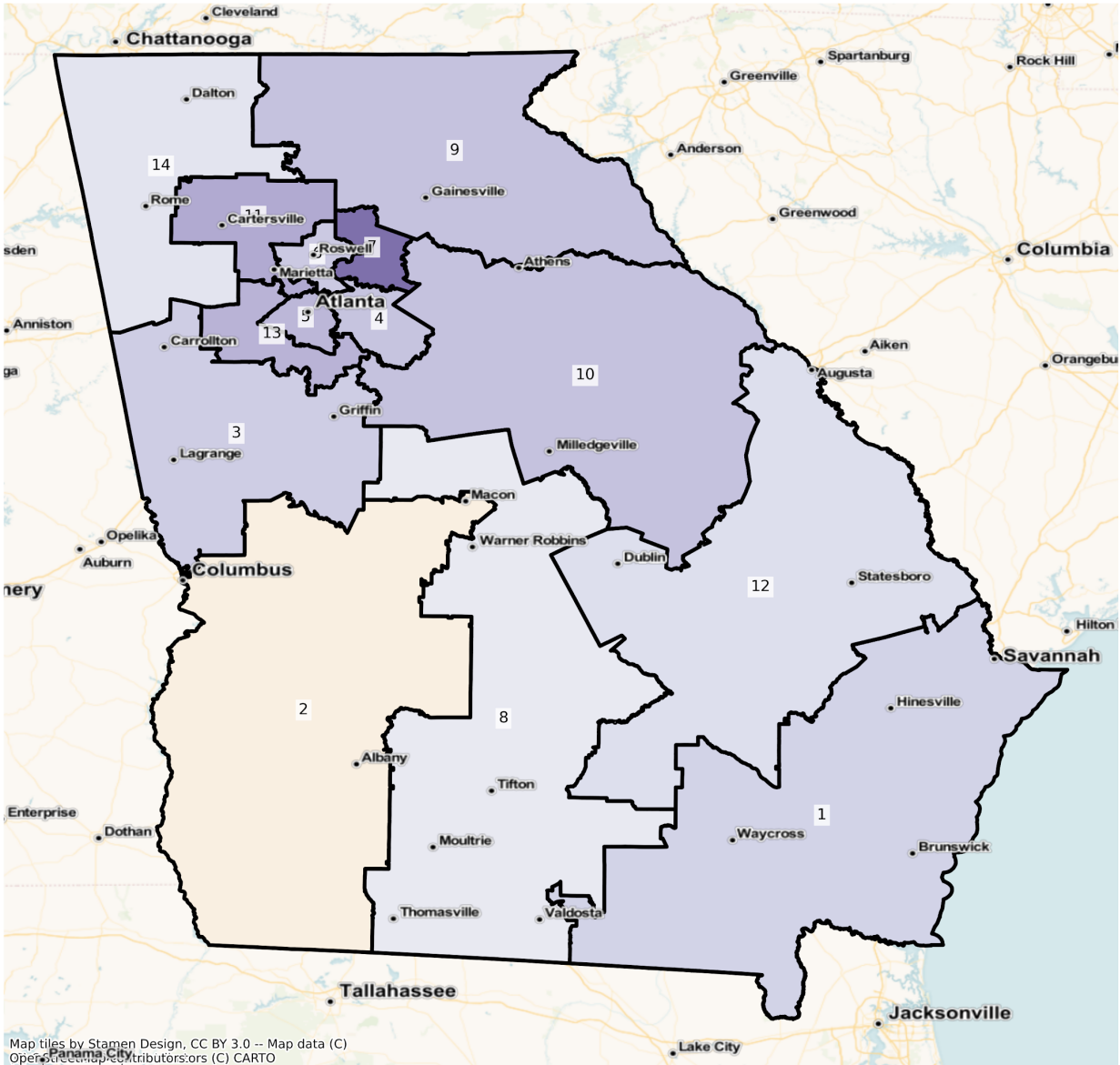
The Latino or Hispanic population in the state grew by 31.60%. This growth occurred across the state with over 40% growth in central Georgia, south of Atlanta. The hispanic population now makes up 10% of Georgia's population..

Congressional

The charts below display the percent change in population from 2010 to 2020 for the listed group. Please note that the color bars are fixed to be from -40% to 40% and these maps are displayed in brown to purple. If the percent change in population was outside of this range, the color scheme changes to red to green to indicate a change.

Total Population

GA Congressional Districts
Population % Change from 2010 to 2020
Total Population



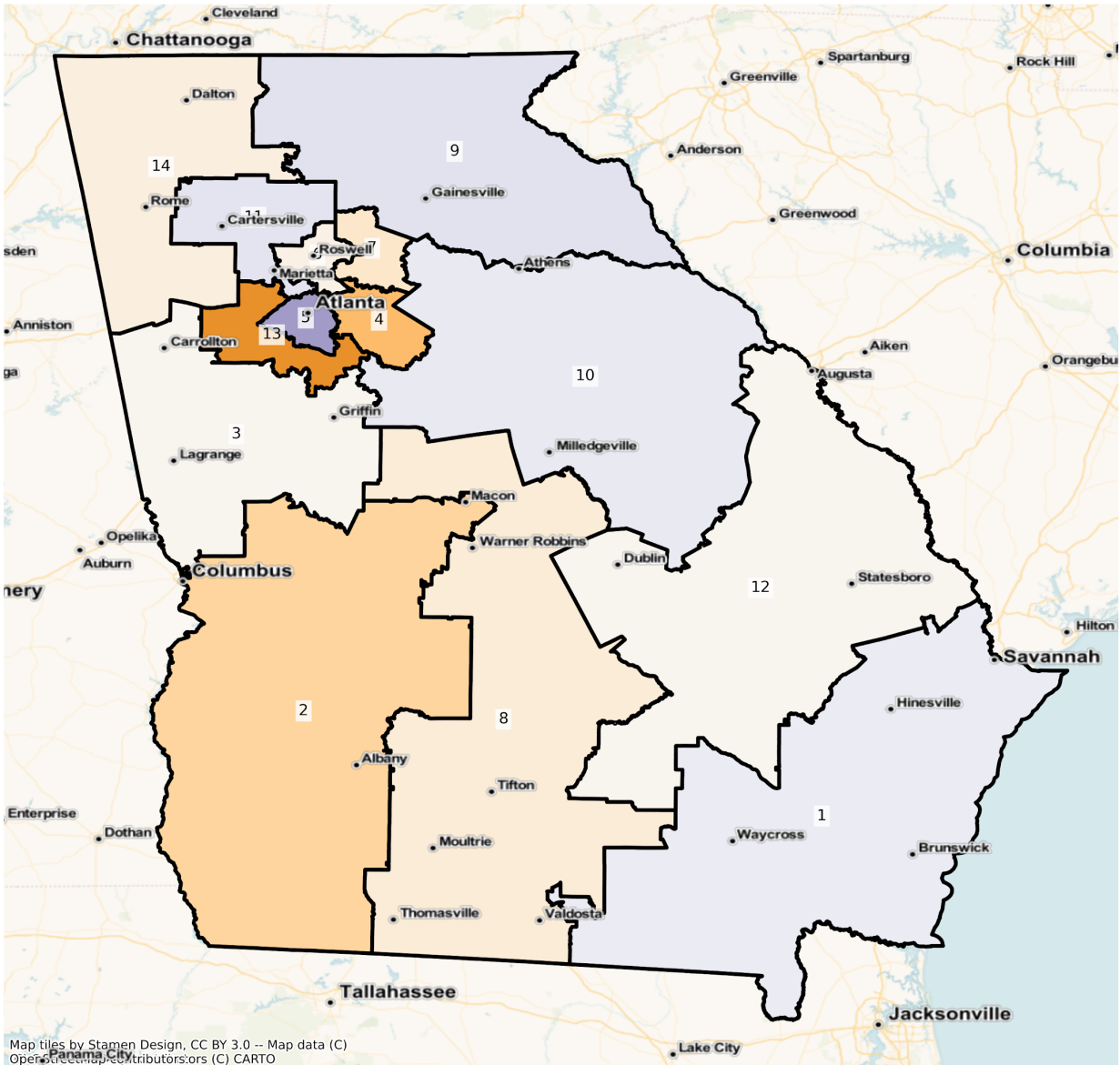
Total Population from 2010 to 2020 at Congressional District Level

DISTRICT	Total Population 2010	Total Population 2020	Total Population % Change
----------	--------------------------	--------------------------	------------------------------

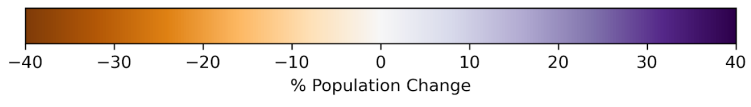
1	691,911	755,729	9.22%
2	691,951	672,988	-2.74%
3	691,995	763,098	10.28%
4	691,974	773,730	11.81%
5	692,145	788,152	13.87%
6	691,975	765,948	10.69%
7	691,975	859,207	24.17%
8	691,964	719,905	4.04%
9	691,975	775,367	12.05%
10	691,986	775,037	12.00%
11	691,785	802,721	16.04%
12	691,983	738,654	6.74%
13	691,923	792,988	14.61%
14	692,048	728,332	5.24%

Population by Race and Ethnicity

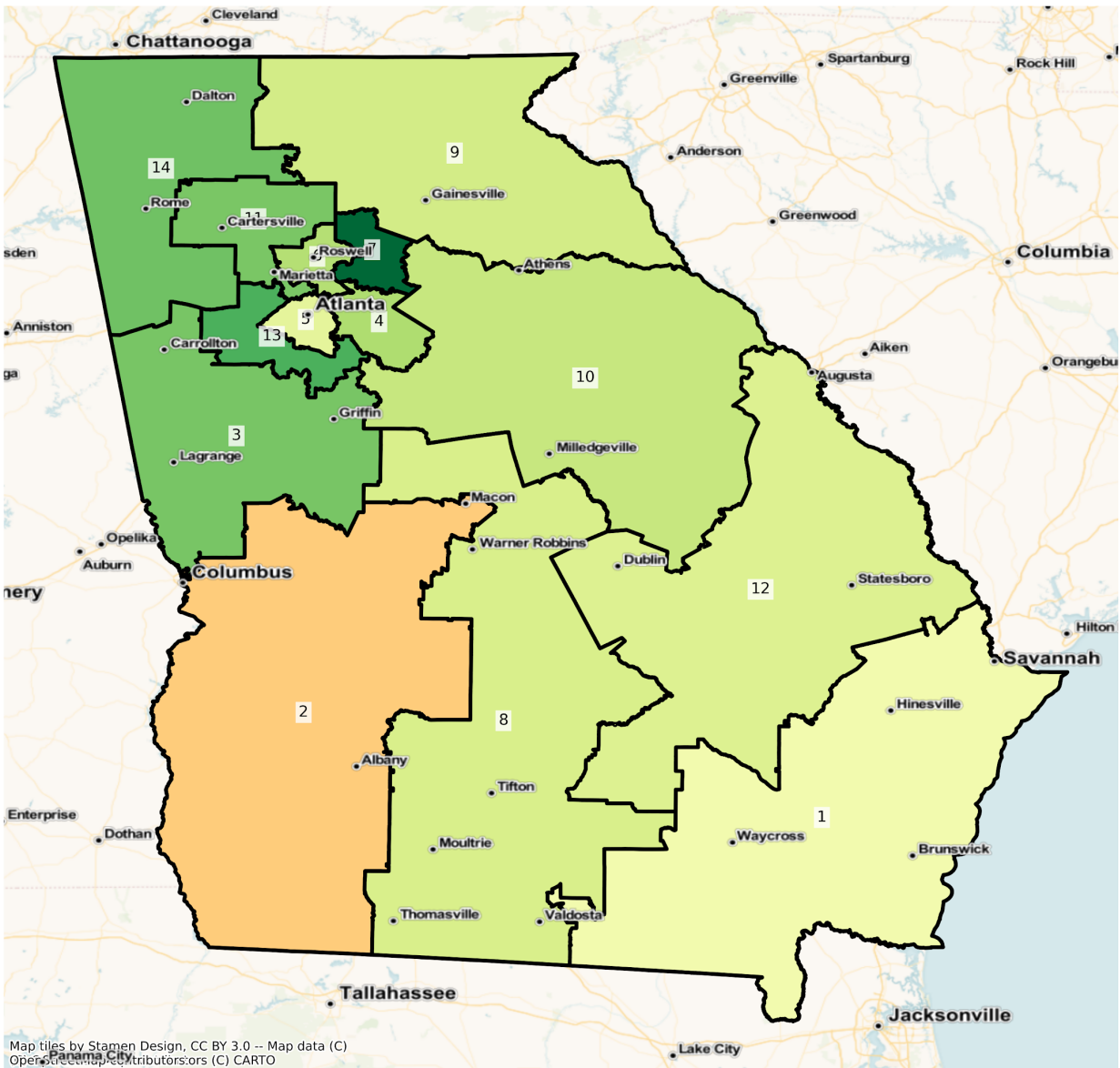
GA Congressional Districts
Population % Change from 2010 to 2020
Ethnicity: Not Latino White alone



Map tiles by Stamen Design, CC BY 3.0 -- Map data (C)
OpenStreetMap contributors, (C) CARTO



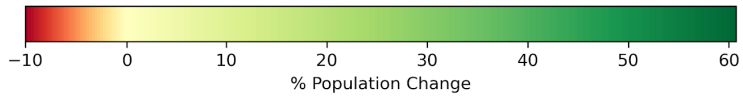
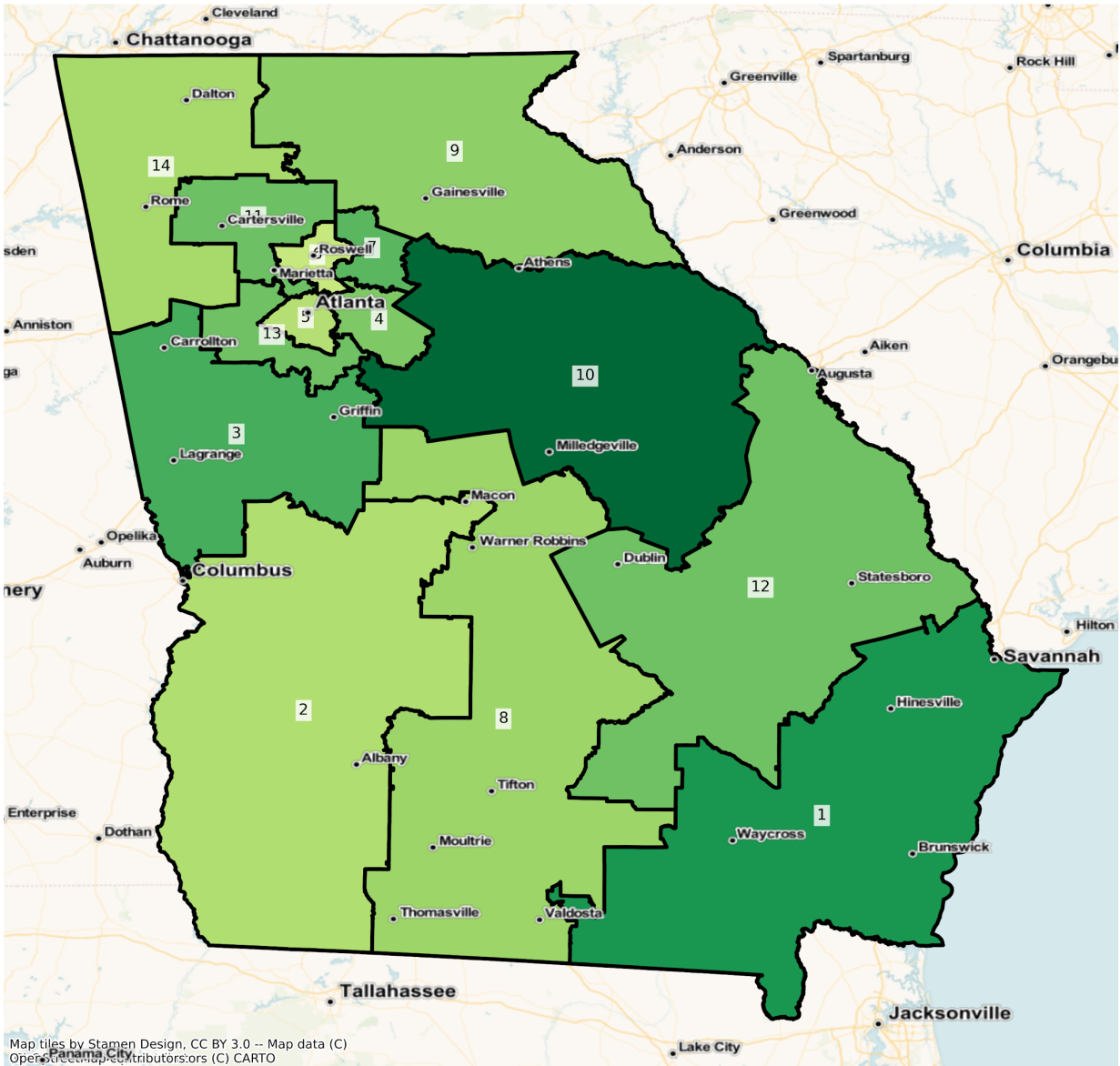
GA Congressional Districts
 Population % Change from 2010 to 2020
 Ethnicity: Not Latino African American alone



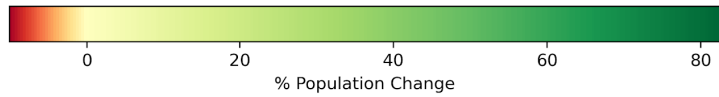
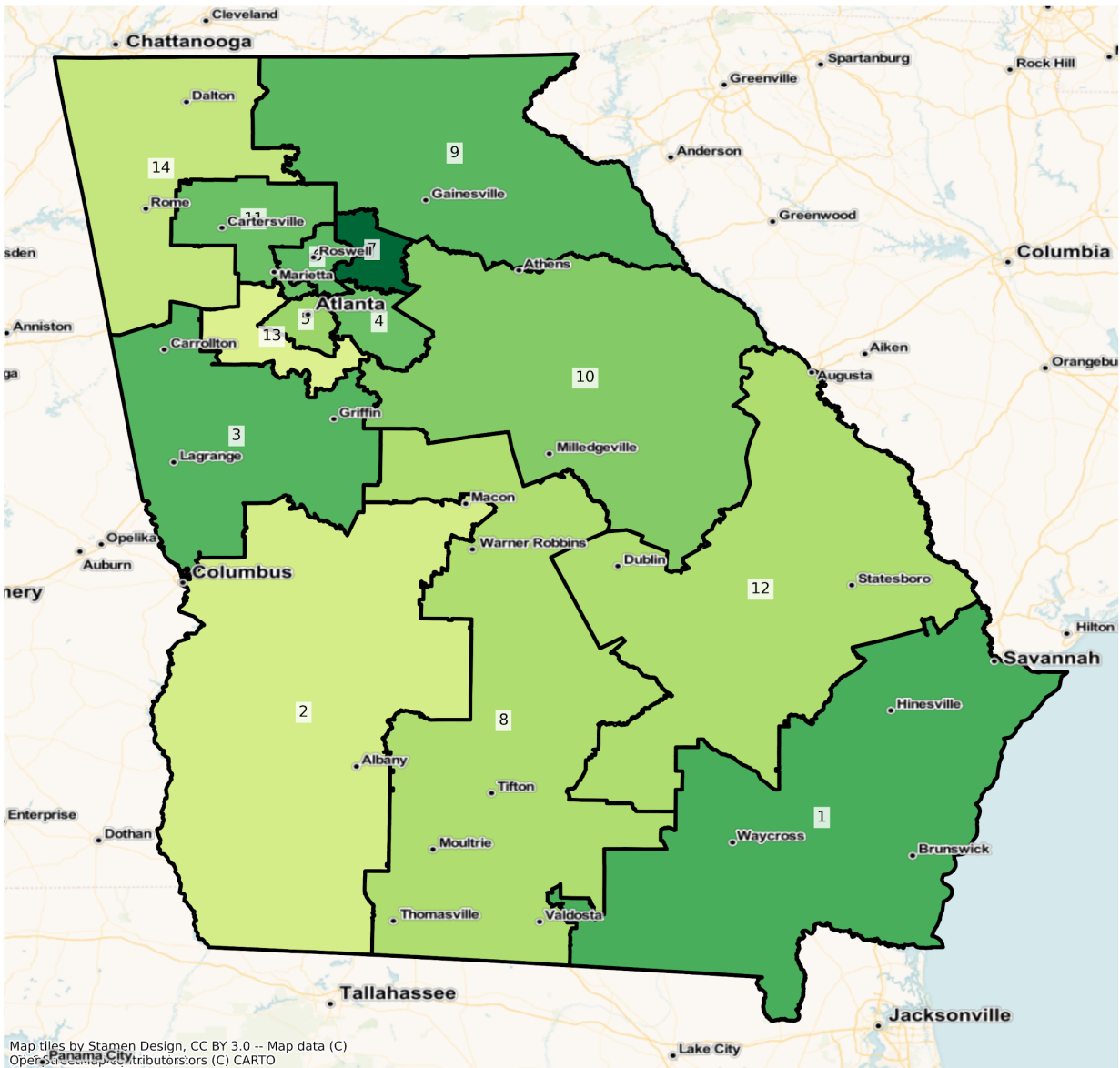
Map tiles by Stamen Design, CC BY 3.0 -- Map data (C)
 OpenStreetMap contributors, (C) CARTO



GA Congressional Districts
 Population % Change from 2010 to 2020
 Ethnicity: Hispanic or Latino



GA Congressional Districts
 Population % Change from 2010 to 2020
 Ethnicity: Not Latino Asian alone



2010 Population by Race and Ethnicity at Congressional District Level

DISTRICT	Total Population	Hispanic or Latino Origin	White Alone, not Latino	African American Alone, not Latino	AIAN Alone, not Latino ¹	Asian Alone, not Latino	NHPI Alone, not Latino ²	Other Alone, not Latino	Two or More, not Latino
1	691,911	39,767	419,808	204,945	1,990	10,745	872	1,074	12,710
2	691,951	31,577	289,153	352,382	1,679	7,020	563	744	8,833
3	691,995	34,910	473,716	157,927	1,677	11,264	326	1,179	10,996
4	691,974	64,605	189,435	392,239	1,348	29,902	300	1,829	12,316
5	692,145	54,622	193,825	404,803	1,334	25,008	212	1,191	11,150
6	691,975	92,409	433,876	83,636	1,084	65,232	276	2,773	12,689
7	691,975	129,930	345,371	120,749	1,280	79,556	268	2,061	12,760
8	691,964	39,578	428,131	203,376	1,676	9,072	280	876	8,975
9	691,975	79,413	549,608	45,079	1,656	7,562	226	653	7,778
10	691,986	32,589	462,721	170,980	1,308	13,768	246	1,114	9,260
11	691,785	75,102	476,693	104,970	1,553	19,090	305	2,309	11,763
12	691,983	36,890	394,822	235,904	1,605	10,567	677	866	10,652
13	691,923	71,300	210,635	376,981	1,507	16,803	320	1,700	12,677
14	692,048	70,997	546,063	56,829	1,582	6,103	281	772	9,421

¹American Indian and Alaska Native Alone, Not Latino

²Native Hawaiian and Pacific Islander Alone, Not Latino

2020 Population by Race and Ethnicity at Congressional District Level

DISTRICT	Total Population	Hispanic or Latino Origin	White Alone, not Latino	African American Alone, not Latino	AIAN Alone, not Latino ¹	Asian Alone, not Latino	NHPI Alone, not Latino ²	Other Alone, not Latino	Two or More, not Latino
1	755,729	59,037	431,850	210,507	1,851	16,745	1,222	3,360	31,157
2	672,988	38,403	259,927	342,517	1,301	8,252	648	2,232	19,708
3	763,098	49,419	467,926	192,859	1,595	17,263	371	3,630	30,035
4	773,730	84,876	160,607	450,632	1,335	44,255	353	5,120	26,552
5	788,152	65,865	229,056	427,045	1,329	33,948	275	4,164	26,470
6	765,948	107,503	425,730	95,125	979	98,451	280	5,997	31,883

7	859,207	179,350	326,940	170,066	1,416	145,194	331	5,499	30,411
8	719,905	49,867	410,807	219,905	1,456	11,801	321	2,308	23,440
9	775,367	102,240	580,920	49,217	1,604	11,496	273	2,536	27,081
10	775,037	52,369	480,655	189,974	1,410	19,487	277	3,970	26,895
11	802,721	101,218	501,630	128,056	1,446	28,205	282	6,274	35,610
12	738,654	49,500	390,813	252,791	1,547	13,725	782	2,711	26,785
13	792,988	95,927	164,665	479,374	1,512	19,374	366	5,447	26,323
14	728,332	87,883	530,578	70,051	1,594	7,484	320	2,639	27,783

¹American Indian and Alaska Native Alone, Not Latino

²Native Hawaiian and Pacific Islander Alone, Not Latino

Percent Change in Population from 2010 to 2020 by Race and Ethnicity at Congressional District Level

DISTRICT	Total Population	Hispanic or Latino Origin	White Alone, not Latino	African American Alone, not Latino	AIAN Alone, not Latino ¹	Asian Alone, not Latino	NHPI Alone, not Latino ²	Other Alone, not Latino	Two or More, not Latino
1	9.22%	48.46%	2.87%	2.71%	-6.98%	55.84%	40.14%	212.85%	145.14%
2	-2.74%	21.62%	-10.11%	-2.80%	-22.51%	17.55%	15.10%	200.00%	123.12%
3	10.28%	41.56%	-1.22%	22.12%	-4.89%	53.26%	13.80%	207.89%	173.14%
4	11.81%	31.38%	-15.22%	14.89%	-0.96%	48.00%	17.67%	179.93%	115.59%
5	13.87%	20.58%	18.18%	5.49%	-0.37%	35.75%	29.72%	249.62%	137.40%
6	10.69%	16.33%	-1.88%	13.74%	-9.69%	50.92%	1.45%	116.26%	151.26%
7	24.17%	38.04%	-5.34%	40.84%	10.63%	82.51%	23.51%	166.81%	138.33%
8	4.04%	26.00%	-4.05%	8.13%	-13.13%	30.08%	14.64%	163.47%	161.17%
9	12.05%	28.74%	5.70%	9.18%	-3.14%	52.02%	20.80%	288.36%	248.17%
10	12.00%	60.70%	3.88%	11.11%	7.80%	41.54%	12.60%	256.37%	190.44%
11	16.04%	34.77%	5.23%	21.99%	-6.89%	47.75%	-7.54%	171.72%	202.73%
12	6.74%	34.18%	-1.02%	7.16%	-3.61%	29.89%	15.51%	213.05%	151.46%
13	14.61%	34.54%	-21.82%	27.16%	0.33%	15.30%	14.38%	220.41%	107.64%
14	5.24%	23.78%	-2.84%	23.27%	0.76%	22.63%	13.88%	241.84%	194.90%

¹American Indian and Alaska Native Alone, Not Latino

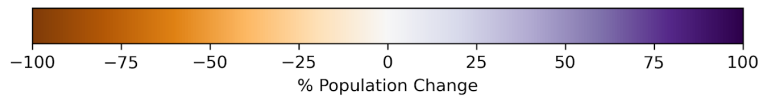
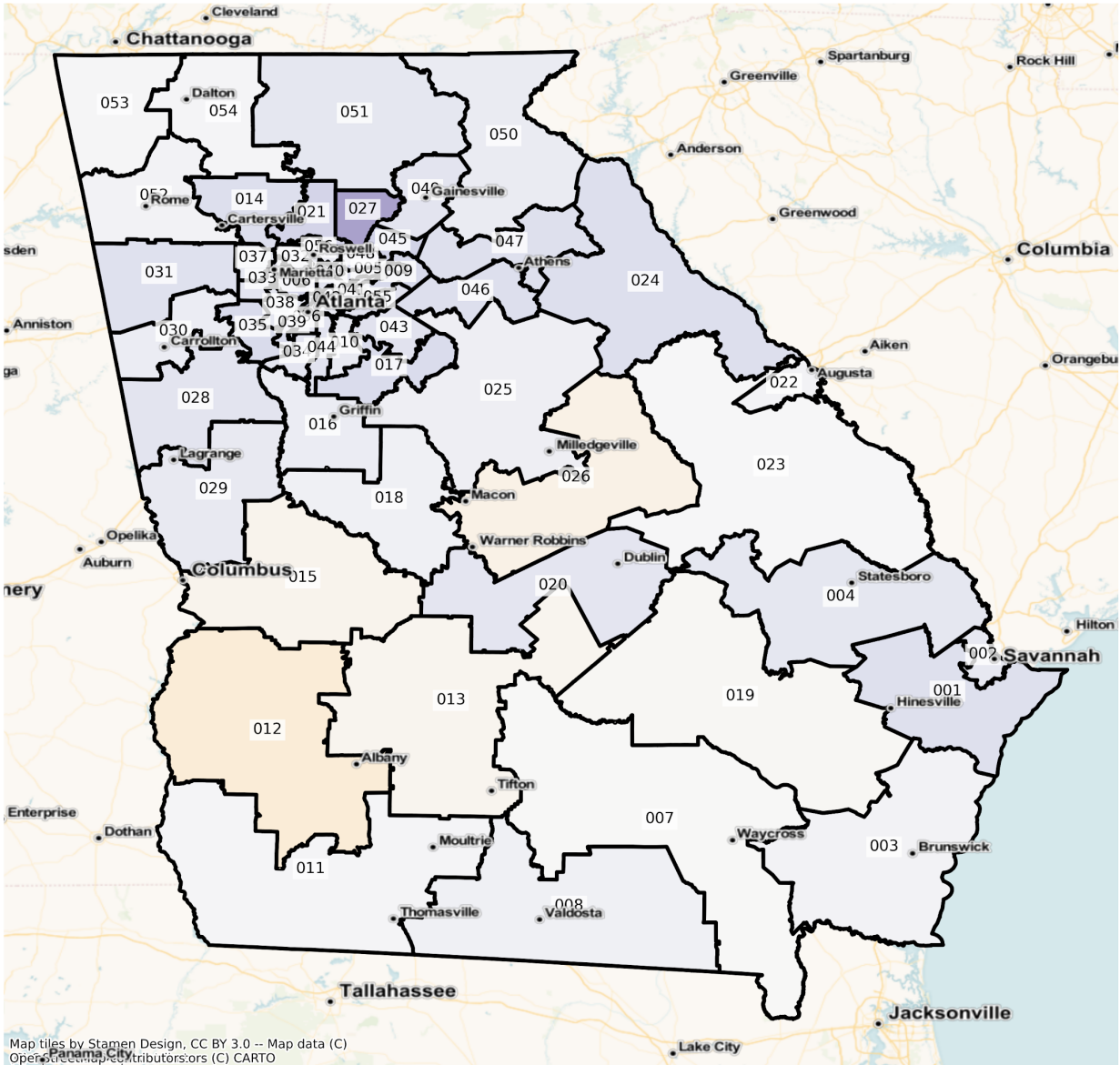
²Native Hawaiian and Pacific Islander Alone, Not Latino

State Senate

The charts below display the percent change in population from 2010 to 2020 for the listed group. Please note that the color bars are fixed to be from -100% to 100% and these maps are displayed in brown to purple. If the percent change in population was outside of this range, the color scheme changes to red to green to indicate a change.

Total Population

GA State Senate Districts
Population % Change from 2010 to 2020
Total Population



Total Population from 2010 to 2020 at State Senate District Level

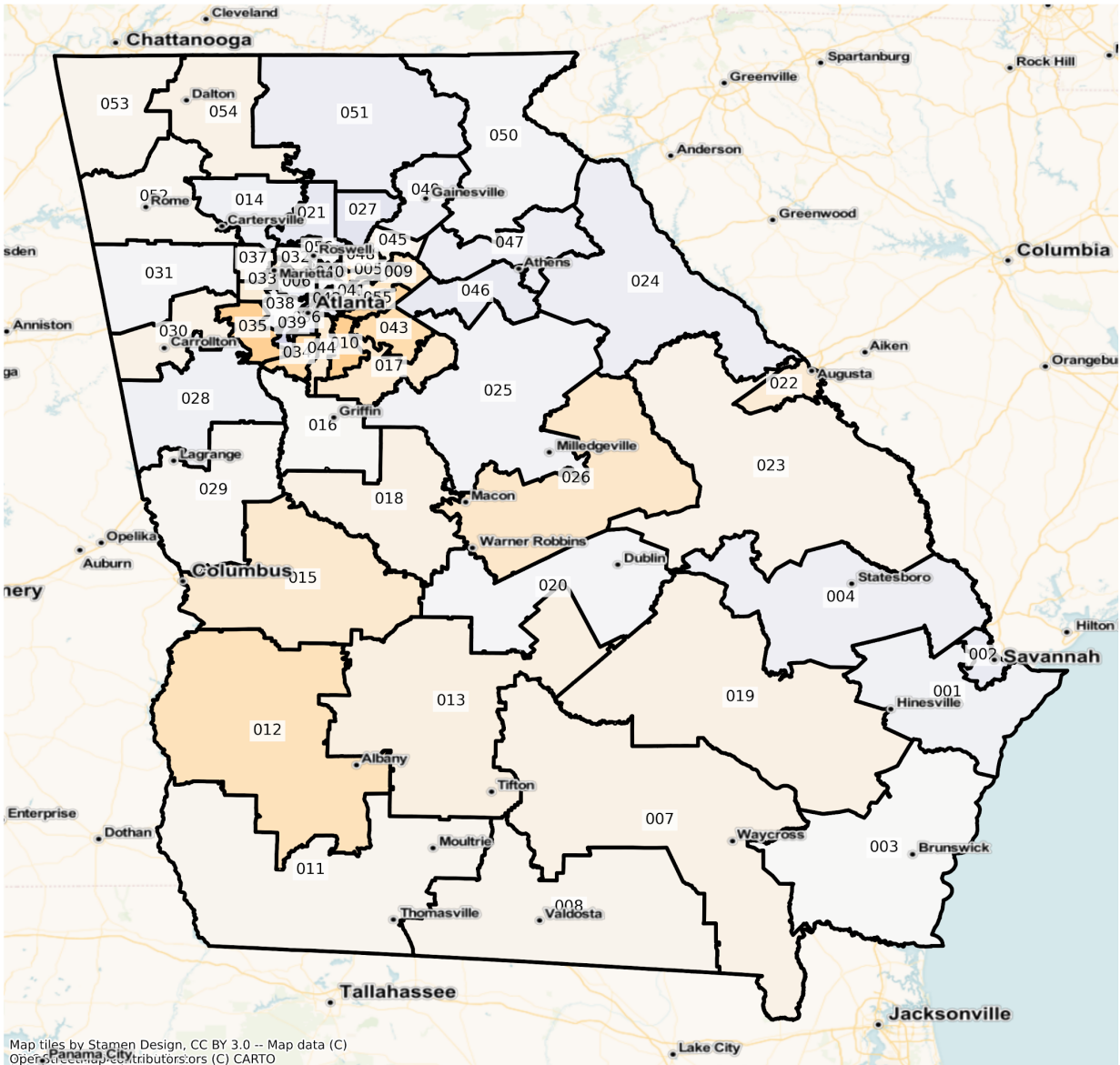
DISTRICT	Total Population 2010	Total Population 2020	Total Population % Change
----------	--------------------------	--------------------------	------------------------------

1	171,781	199,003	15.85%
2	171,606	189,376	10.36%
3	171,950	177,449	3.20%
4	173,073	193,292	11.68%
5	172,499	196,225	13.75%
6	173,825	211,100	21.44%
7	171,330	171,305	-0.01%
8	171,490	179,819	4.86%
9	173,867	208,981	20.20%
10	172,453	189,464	9.86%
11	172,567	176,158	2.08%
12	173,195	156,535	-9.62%
13	171,350	166,640	-2.75%
14	173,104	201,821	16.59%
15	173,248	167,618	-3.25%
16	172,012	185,121	7.62%
17	171,860	203,673	18.51%
18	172,999	181,335	4.82%
19	173,335	171,601	-1.00%
20	173,859	194,874	12.09%
21	174,583	213,753	22.44%
22	171,647	177,095	3.17%
23	171,569	172,267	0.41%
24	172,583	201,121	16.54%
25	174,027	184,088	5.78%
26	171,351	162,124	-5.38%
27	172,726	247,844	43.49%
28	172,407	194,042	12.55%
29	173,911	190,519	9.55%
30	172,647	185,748	7.59%
31	174,298	200,874	15.25%

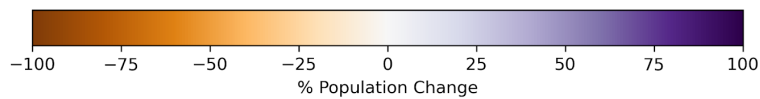
32	174,240	191,820	10.09%
33	174,084	194,586	11.78%
34	173,063	193,834	12.00%
35	173,563	206,690	19.09%
36	172,127	194,965	13.27%
37	172,858	192,484	11.35%
38	174,448	193,779	11.08%
39	173,765	205,559	18.30%
40	173,801	195,944	12.74%
41	173,466	196,153	13.08%
42	172,362	188,324	9.26%
43	172,071	196,524	14.21%
44	174,403	198,150	13.62%
45	173,580	214,035	23.31%
46	174,230	203,757	16.95%
47	174,417	202,081	15.86%
48	170,859	197,001	15.30%
49	173,817	196,805	13.23%
50	171,798	186,065	8.30%
51	173,593	193,589	11.52%
52	172,560	179,224	3.86%
53	173,132	174,630	0.87%
54	173,417	176,410	1.73%
55	174,275	199,603	14.53%
56	174,509	188,979	8.29%

Population by Race and Ethnicity

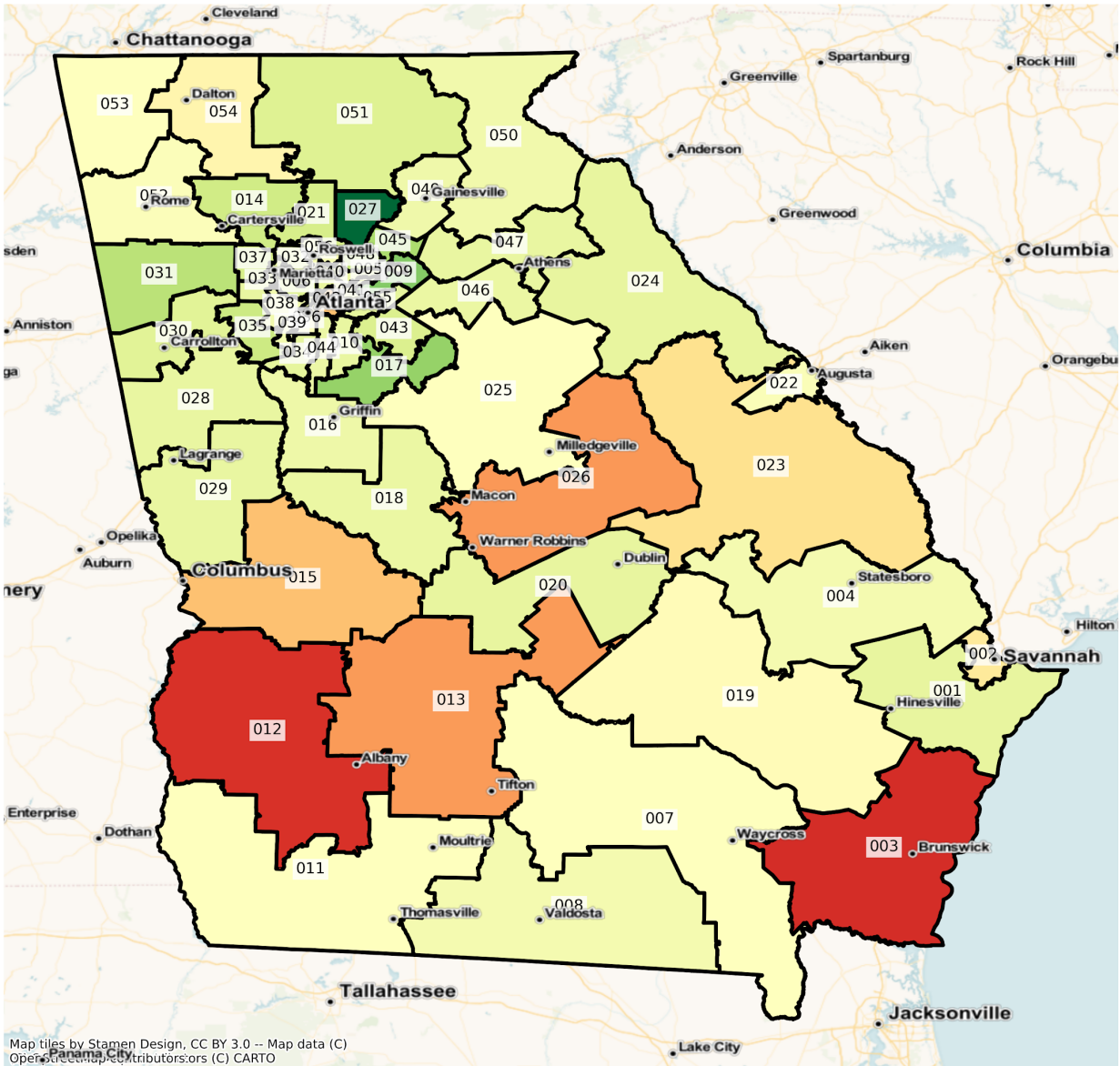
GA State Senate Districts
Population % Change from 2010 to 2020
Ethnicity: Not Latino White alone



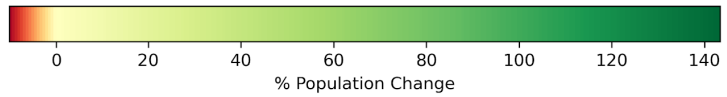
Map tiles by Stamen Design, CC BY 3.0 -- Map data (C)
OpenStreetMap contributors, (C) CARTO



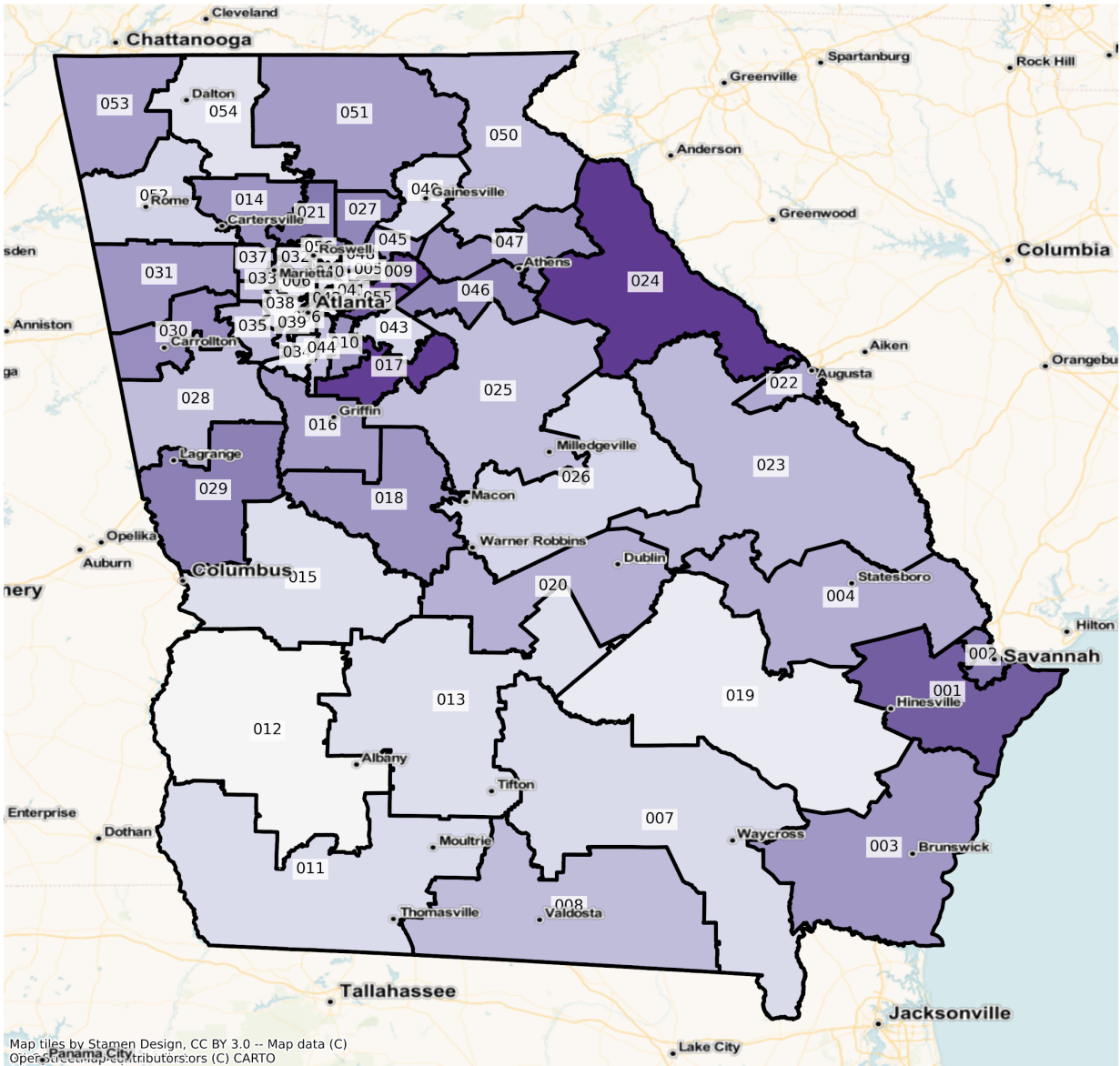
GA State Senate Districts
 Population % Change from 2010 to 2020
 Ethnicity: Not Latino African American alone



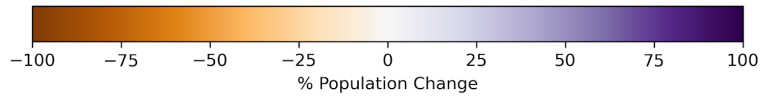
Map tiles by Stamen Design, CC BY 3.0 -- Map data (C)
 OpenStreetMap contributors, (C) CARTO



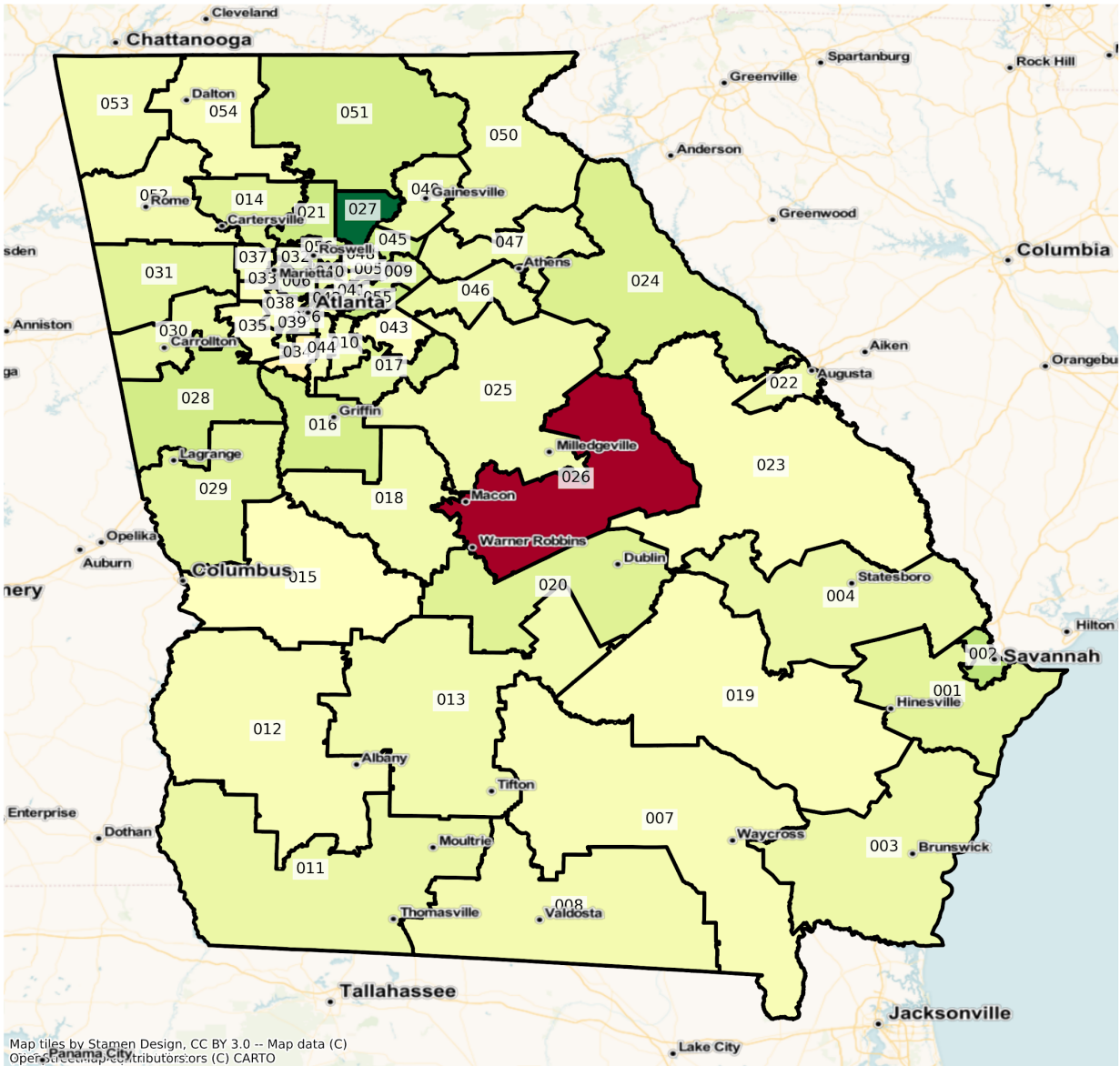
GA State Senate Districts
 Population % Change from 2010 to 2020
 Ethnicity: Hispanic or Latino



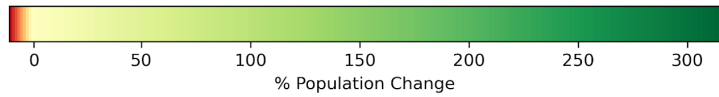
Map tiles by Stamen Design, CC BY 3.0 -- Map data (C)
 OpenStreetMap contributors, (C) CARTO



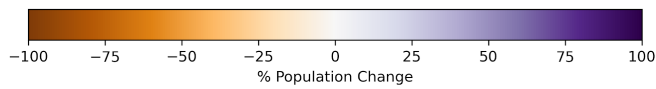
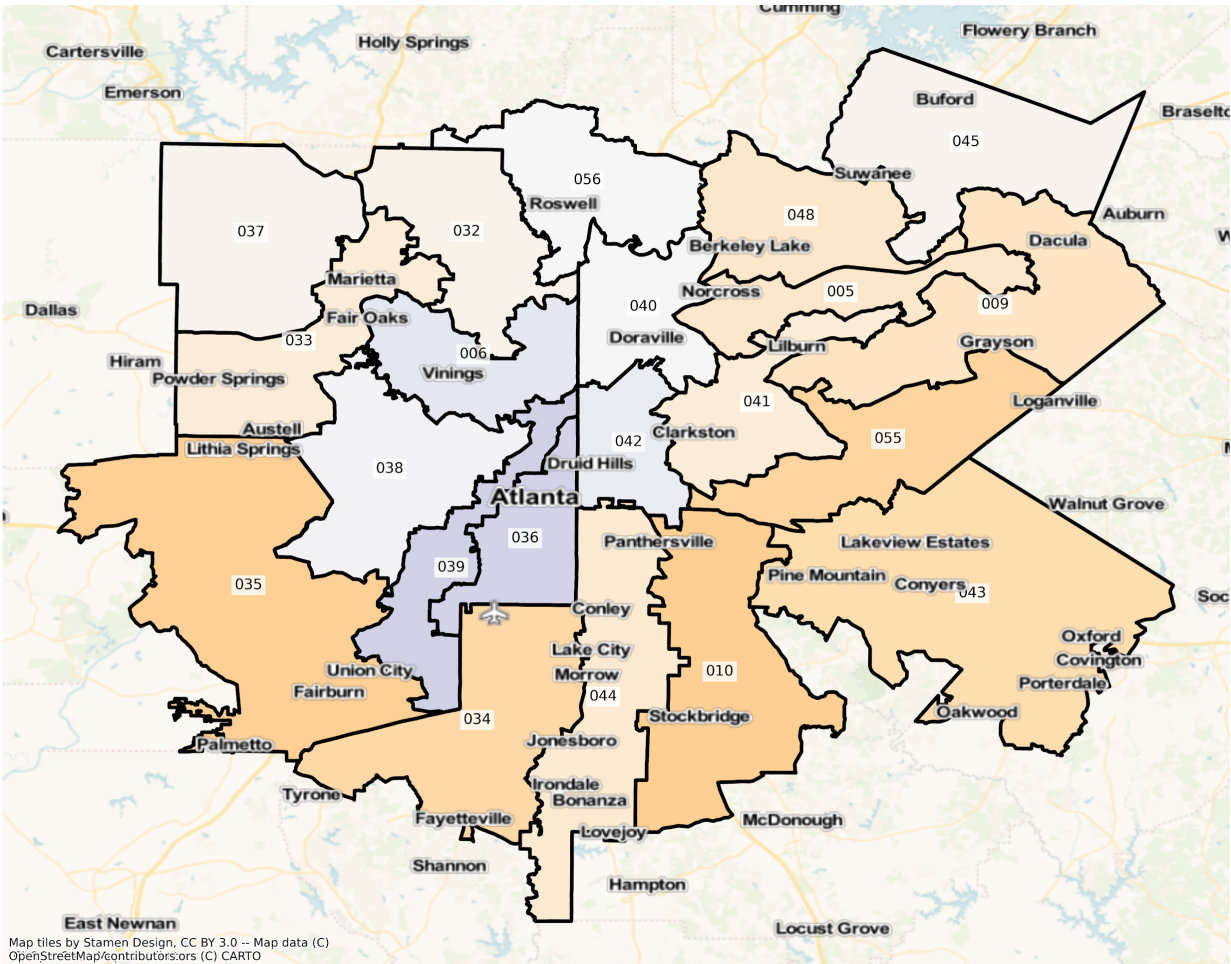
GA State Senate Districts
Population % Change from 2010 to 2020
Ethnicity: Not Latino Asian alone



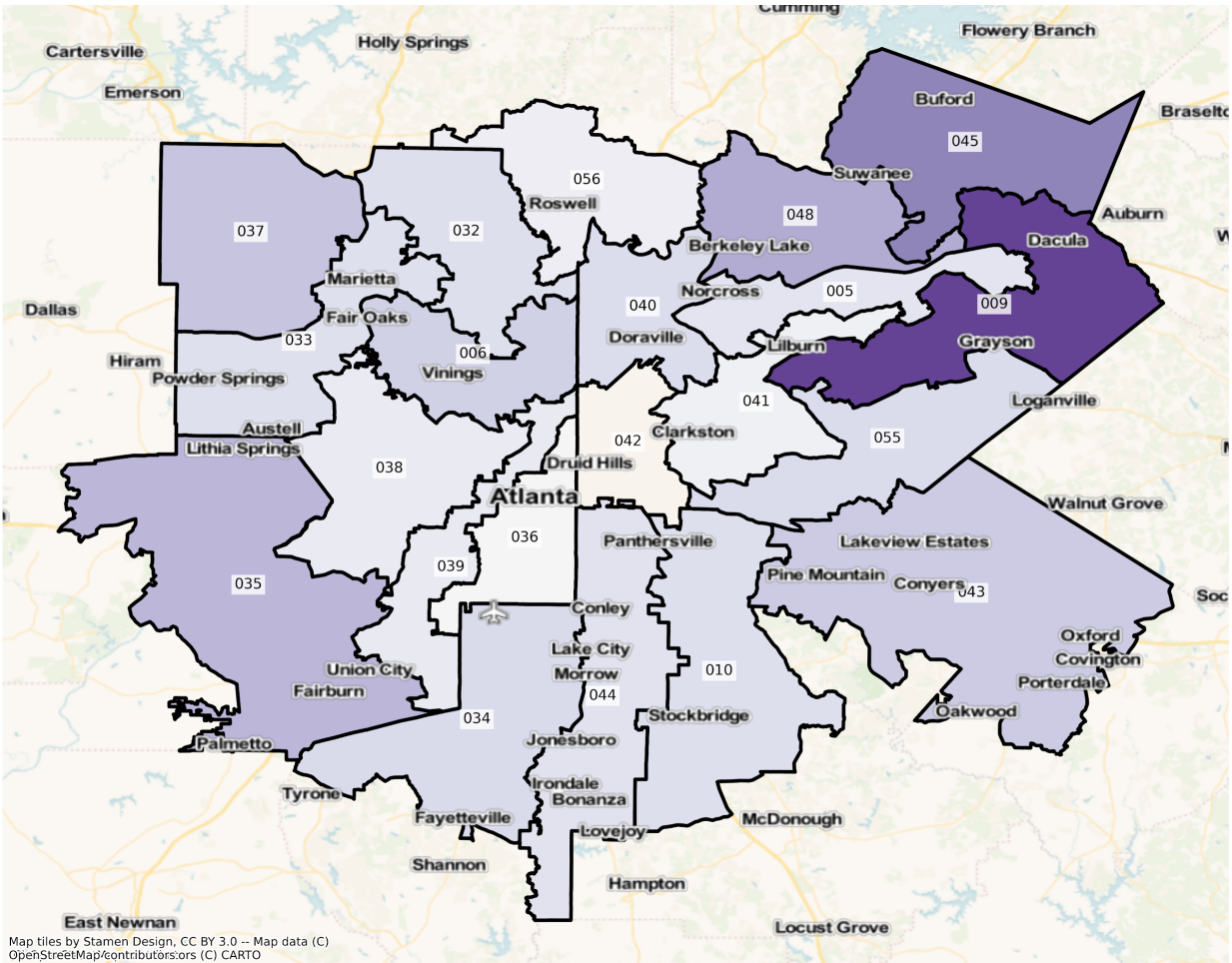
Map tiles by Stamen Design, CC BY 3.0 -- Map data (C)
OpenStreetMap contributors, (C) CARTO



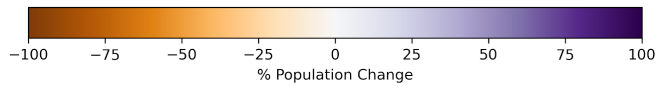
GA Atlanta State Senate Districts
Population % Change from 2010 to 2020
Ethnicity: Not Latino White alone



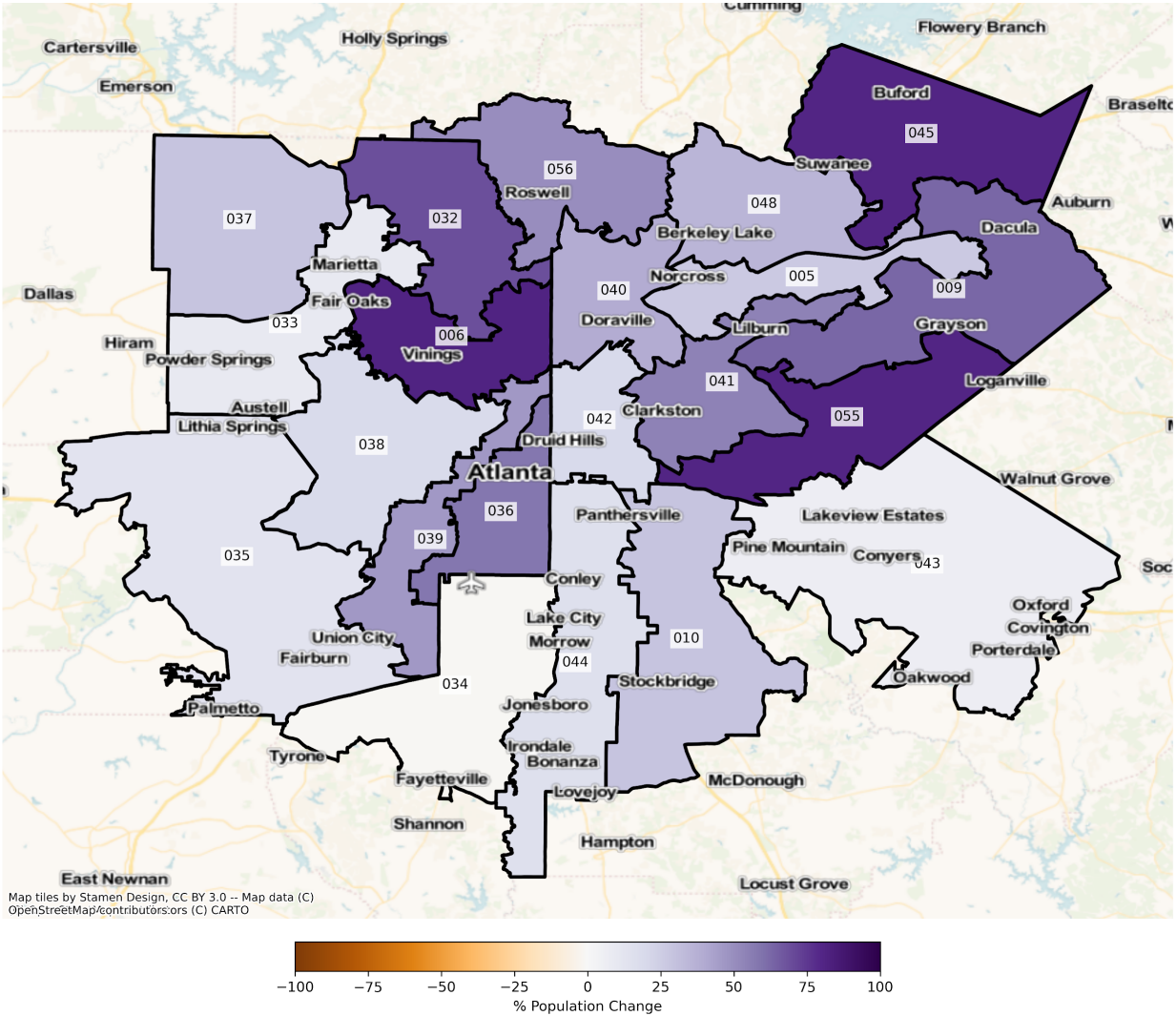
GA Atlanta State Senate Districts
 Population % Change from 2010 to 2020
 Ethnicity: Not Latino African American alone



Map tiles by Stamen Design, CC BY 3.0 - Map data (C) OpenStreetMap/contributors/ors (C) CARTO



GA Atlanta State Senate Districts
 Population % Change from 2010 to 2020
 Ethnicity: Not Latino Asian alone



2010 Population by Race and Ethnicity at State Senate District Level

DISTRICT	Total Population	Hispanic or Latino Origin	White Alone, not Latino	African American Alone, not Latino	AIAN Alone, not Latino ¹	Asian Alone, not Latino	NHPI Alone, not Latino ²	Other Alone, not Latino	Two or More, not Latino
1	171,781	10,291	115,128	37,229	474	4,296	327	337	3,699
2	171,606	9,816	62,912	91,702	421	3,299	169	301	2,986

3	171,950	8,534	118,709	39,186	498	1,737	152	206	2,928
4	173,073	8,958	118,307	41,255	360	1,736	82	225	2,150
5	172,499	71,815	31,713	47,767	344	17,180	89	518	3,073
6	173,825	24,768	97,570	38,696	319	8,334	66	926	3,146
7	171,330	11,685	117,246	39,044	406	1,002	59	137	1,751
8	171,490	9,198	101,054	55,952	548	1,867	108	307	2,456
9	173,867	18,207	103,867	33,772	339	13,822	63	511	3,286
10	172,453	7,142	39,474	117,545	359	4,567	64	402	2,900
11	172,567	13,703	98,922	56,767	525	941	34	177	1,498
12	173,195	6,150	56,544	107,123	347	1,295	62	123	1,551
13	171,350	8,153	104,305	55,163	311	1,712	50	134	1,522
14	173,104	18,976	132,575	15,085	491	2,661	113	355	2,848
15	173,248	10,633	61,267	94,959	555	1,774	346	258	3,456
16	172,012	7,128	122,696	35,530	379	3,377	72	247	2,583
17	171,860	7,986	107,637	50,269	418	2,239	76	335	2,900
18	172,999	6,126	113,308	48,035	456	2,638	49	186	2,201
19	173,335	15,529	108,295	45,206	381	1,155	207	166	2,396
20	173,859	7,596	109,798	49,810	376	3,147	73	215	2,844
21	174,583	11,759	139,083	10,911	326	9,161	37	514	2,792
22	171,647	7,217	57,259	99,911	496	2,597	338	257	3,572
23	171,569	5,517	99,185	61,640	412	2,028	146	176	2,465
24	172,583	6,937	124,475	33,328	367	4,221	127	239	2,889
25	174,027	5,679	111,995	52,074	374	1,749	57	213	1,886
26	171,351	5,003	60,087	102,693	305	1,046	68	173	1,976
27	172,726	16,179	138,586	4,270	356	10,869	53	316	2,097
28	172,407	9,562	128,819	28,383	401	2,277	65	234	2,666
29	173,911	7,317	113,636	45,086	445	4,122	156	325	2,824
30	172,647	10,307	123,888	33,151	443	1,452	54	355	2,997
31	174,298	10,762	135,386	23,193	392	1,413	63	300	2,789
32	174,240	9,807	133,240	14,464	261	12,612	48	673	3,135
33	174,084	33,567	69,559	61,614	346	4,689	93	791	3,425

34	173,063	24,642	30,414	106,648	363	7,688	61	346	2,901
35	173,563	13,769	47,747	105,933	412	2,025	125	423	3,129
36	172,127	12,233	50,675	101,981	380	3,585	53	330	2,890
37	172,858	13,262	118,901	29,900	354	6,636	65	537	3,203
38	174,448	17,401	40,749	109,361	305	3,487	54	335	2,756
39	173,765	9,650	43,973	109,624	339	6,947	39	300	2,893
40	173,801	36,818	92,250	25,785	316	15,210	72	490	2,860
41	173,466	23,281	40,403	88,545	362	16,640	79	585	3,571
42	172,362	24,229	90,651	42,005	300	11,530	60	440	3,147
43	172,071	12,250	50,628	103,702	299	1,976	76	375	2,765
44	174,403	14,559	27,929	121,586	363	6,805	74	271	2,816
45	173,580	22,225	106,541	23,512	309	17,154	71	500	3,268
46	174,230	8,606	127,238	29,970	263	5,225	66	357	2,505
47	174,417	16,455	124,707	25,486	307	4,574	51	301	2,536
48	170,859	21,201	80,664	24,533	223	40,030	59	472	3,677
49	173,817	44,504	111,341	12,372	355	3,152	55	233	1,805
50	171,798	13,621	144,283	9,067	357	2,043	82	154	2,191
51	173,593	7,454	161,324	1,365	619	684	69	89	1,989
52	172,560	18,234	130,217	19,355	394	1,817	104	158	2,281
53	173,132	3,905	157,874	7,032	468	1,267	67	150	2,369
54	173,417	38,990	126,306	4,260	344	1,537	49	135	1,796
55	174,275	11,564	41,673	112,596	353	3,925	84	583	3,497
56	174,509	22,829	110,844	25,369	263	10,740	71	945	3,448

¹American Indian and Alaska Native Alone, Not Latino

²Native Hawaiian and Pacific Islander Alone, Not Latino

2020 Population by Race and Ethnicity at State Senate District Level

DISTRICT	Total Population	Hispanic or Latino Origin	White Alone, not Latino	African American Alone, not Latino	AIAN Alone, not Latino ¹	Asian Alone, not Latino	NHPI Alone, not Latino ²	Other Alone, not Latino	Two or More, not Latino
1	199,003	17,008	120,483	43,884	496	6,170	456	983	9,523

2	189,376	15,602	68,782	90,416	393	6,425	295	866	6,597
3	177,449	12,510	118,059	36,020	463	2,212	163	773	7,249
4	193,292	12,454	125,483	44,906	416	2,289	107	621	7,016
5	196,225	86,309	27,362	54,008	298	21,867	83	1,290	5,008
6	211,100	28,193	108,893	47,947	332	15,118	74	1,873	8,670
7	171,305	13,932	111,307	39,320	322	1,105	51	414	4,854
8	179,819	12,174	97,187	60,786	495	2,202	131	634	6,210
9	208,981	30,891	87,311	58,108	361	22,534	59	1,518	8,199
10	189,464	10,564	28,076	137,057	331	5,900	67	1,263	6,206
11	176,158	16,210	96,183	57,364	421	1,240	47	421	4,272
12	156,535	6,210	46,227	98,602	231	1,450	39	359	3,417
13	166,640	9,526	97,405	52,646	234	2,074	36	403	4,316
14	201,821	27,886	139,223	20,002	427	3,870	86	1,126	9,201
15	167,618	12,457	53,713	91,888	374	1,778	481	682	6,245
16	185,121	10,349	120,851	40,020	315	5,582	58	928	7,018
17	203,673	13,885	93,899	82,686	322	3,350	99	1,269	8,163
18	181,335	9,003	106,879	55,211	406	3,211	51	689	5,885
19	171,601	16,778	101,947	45,094	354	1,264	255	539	5,370
20	194,874	10,497	112,293	58,645	325	4,720	118	741	7,535
21	213,753	18,505	153,796	14,184	366	16,362	75	1,366	9,099
22	177,095	10,150	51,323	104,047	434	3,255	335	775	6,776
23	172,267	7,382	95,053	60,505	387	2,208	194	527	6,011
24	201,121	12,128	132,608	38,960	417	6,652	196	938	9,222
25	184,088	7,420	115,528	52,567	295	2,179	54	698	5,347
26	162,124	6,077	51,845	97,920	313	937	33	500	4,499
27	247,844	24,739	156,655	10,390	453	45,090	85	1,247	9,185
28	194,042	12,687	135,630	32,861	409	3,865	77	839	7,674
29	190,519	11,328	111,466	52,415	456	6,011	221	873	7,749
30	185,748	15,518	117,982	40,497	451	1,974	42	995	8,289
31	200,874	15,831	139,425	33,769	449	2,066	125	1,068	8,141
32	191,820	14,366	127,890	16,851	270	21,380	50	1,876	9,137

33	194,586	45,262	62,503	71,705	399	5,135	124	2,002	7,456
34	193,834	29,118	23,177	126,942	440	7,623	77	1,155	5,302
35	206,690	18,411	34,495	143,175	368	2,304	122	1,365	6,450
36	194,965	14,792	62,379	103,507	338	5,670	65	1,081	7,133
37	192,484	18,962	115,130	38,684	297	8,565	64	1,563	9,219
38	193,779	20,714	42,149	119,191	317	4,164	67	1,024	6,153
39	205,559	12,616	54,370	120,257	323	10,157	71	1,139	6,626
40	195,944	42,428	93,595	30,226	245	21,191	67	1,250	6,942
41	196,153	32,995	36,375	93,000	392	25,713	62	1,272	6,344
42	188,324	25,398	98,964	40,634	243	13,867	51	1,159	8,008
43	196,524	15,063	39,854	131,242	325	2,110	164	1,256	6,510
44	198,150	19,217	24,672	139,005	326	7,915	74	1,237	5,704
45	214,035	33,538	103,160	36,028	283	30,967	88	1,260	8,711
46	203,757	13,112	140,143	34,440	432	6,998	78	1,298	7,256
47	202,081	24,413	132,903	29,493	292	6,001	63	1,098	7,818
48	197,001	29,705	69,591	34,245	270	54,379	86	1,300	7,425
49	196,805	53,902	117,790	13,870	328	4,169	85	686	5,975
50	186,065	18,118	147,792	10,017	383	2,600	76	505	6,574
51	193,589	10,793	171,445	1,686	599	1,142	40	578	7,306
52	179,224	22,352	126,871	19,866	402	2,164	38	627	6,904
53	174,630	5,642	151,938	7,086	435	1,538	114	442	7,435
54	176,410	44,777	119,501	4,232	331	1,727	27	423	5,392
55	199,603	19,210	31,076	133,050	380	7,108	79	1,528	7,172
56	188,979	24,350	111,467	26,962	211	16,133	76	1,545	8,235

¹American Indian and Alaska Native Alone, Not Latino

²Native Hawaiian and Pacific Islander Alone, Not Latino

Percent Change in Population from 2010 to 2020 by Race and Ethnicity at State Senate District Level

DISTRICT	Total Population	Hispanic or Latino Origin	White Alone, not Latino	African American Alone, not Latino	AIAN Alone, not Latino ¹	Asian Alone, not Latino	NHPI Alone, not Latino ²	Other Alone, not Latino	Two or More, not Latino
----------	------------------	---------------------------	-------------------------	------------------------------------	-------------------------------------	-------------------------	-------------------------------------	-------------------------	-------------------------

1	15.85%	65.27%	4.65%	17.88%	4.64%	43.62%	39.45%	191.69%	157.45%
2	10.36%	58.94%	9.33%	-1.40%	-6.65%	94.76%	74.56%	187.71%	120.93%
3	3.20%	46.59%	-0.55%	-8.08%	-7.03%	27.35%	7.24%	275.24%	147.58%
4	11.68%	39.03%	6.07%	8.85%	15.56%	31.85%	30.49%	176.00%	226.33%
5	13.75%	20.18%	-13.72%	13.07%	-13.37%	27.28%	-6.74%	149.03%	62.97%
6	21.44%	13.83%	11.61%	23.91%	4.08%	81.40%	12.12%	102.27%	175.59%
7	-0.01%	19.23%	-5.07%	0.71%	-20.69%	10.28%	-13.56%	202.19%	177.21%
8	4.86%	32.35%	-3.83%	8.64%	-9.67%	17.94%	21.30%	106.51%	152.85%
9	20.20%	69.67%	-15.94%	72.06%	6.49%	63.03%	-6.35%	197.06%	149.51%
10	9.86%	47.91%	-28.87%	16.60%	-7.80%	29.19%	4.69%	214.18%	114.00%
11	2.08%	18.30%	-2.77%	1.05%	-19.81%	31.77%	38.24%	137.85%	185.18%
12	-9.62%	0.98%	-18.25%	-7.95%	-33.43%	11.97%	-37.10%	191.87%	120.31%
13	-2.75%	16.84%	-6.62%	-4.56%	-24.76%	21.14%	-28.00%	200.75%	183.57%
14	16.59%	46.95%	5.01%	32.60%	-13.03%	45.43%	-23.89%	217.18%	223.07%
15	-3.25%	17.15%	-12.33%	-3.23%	-32.61%	0.23%	39.02%	164.34%	80.70%
16	7.62%	45.19%	-1.50%	12.64%	-16.89%	65.29%	-19.44%	275.71%	171.70%
17	18.51%	73.87%	-12.76%	64.49%	-22.97%	49.62%	30.26%	278.81%	181.48%
18	4.82%	46.96%	-5.67%	14.94%	-10.96%	21.72%	4.08%	270.43%	167.38%
19	-1.00%	8.04%	-5.86%	-0.25%	-7.09%	9.44%	23.19%	224.70%	124.12%
20	12.09%	38.19%	2.27%	17.74%	-13.56%	49.98%	61.64%	244.65%	164.94%
21	22.44%	57.37%	10.58%	30.00%	12.27%	78.60%	102.70%	165.76%	225.90%
22	3.17%	40.64%	-10.37%	4.14%	-12.50%	25.34%	-0.89%	201.56%	89.70%
23	0.41%	33.80%	-4.17%	-1.84%	-6.07%	8.88%	32.88%	199.43%	143.85%
24	16.54%	74.83%	6.53%	16.90%	13.62%	57.59%	54.33%	292.47%	219.21%
25	5.78%	30.66%	3.15%	0.95%	-21.12%	24.59%	-5.26%	227.70%	183.51%
26	-5.38%	21.47%	-13.72%	-4.65%	2.62%	-10.42%	-51.47%	189.02%	127.68%
27	43.49%	52.91%	13.04%	143.33%	27.25%	314.85%	60.38%	294.62%	338.01%
28	12.55%	32.68%	5.29%	15.78%	2.00%	69.74%	18.46%	258.55%	187.85%
29	9.55%	54.82%	-1.91%	16.26%	2.47%	45.83%	41.67%	168.62%	174.40%
30	7.59%	50.56%	-4.77%	22.16%	1.81%	35.95%	-22.22%	180.28%	176.58%
31	15.25%	47.10%	2.98%	45.60%	14.54%	46.21%	98.41%	256.00%	191.90%

32	10.09%	46.49%	-4.02%	16.50%	3.45%	69.52%	4.17%	178.75%	191.45%
33	11.78%	34.84%	-10.14%	16.38%	15.32%	9.51%	33.33%	153.10%	117.69%
34	12.00%	18.16%	-23.79%	19.03%	21.21%	-0.85%	26.23%	233.82%	82.76%
35	19.09%	33.71%	-27.75%	35.16%	-10.68%	13.78%	-2.40%	222.70%	106.14%
36	13.27%	20.92%	23.10%	1.50%	-11.05%	58.16%	22.64%	227.58%	146.82%
37	11.35%	42.98%	-3.17%	29.38%	-16.10%	29.07%	-1.54%	191.06%	187.82%
38	11.08%	19.04%	3.44%	8.99%	3.93%	19.41%	24.07%	205.67%	123.26%
39	18.30%	30.74%	23.64%	9.70%	-4.72%	46.21%	82.05%	279.67%	129.04%
40	12.74%	15.24%	1.46%	17.22%	-22.47%	39.32%	-6.94%	155.10%	142.73%
41	13.08%	41.73%	-9.97%	5.03%	8.29%	54.53%	-21.52%	117.44%	77.65%
42	9.26%	4.82%	9.17%	-3.26%	-19.00%	20.27%	-15.00%	163.41%	154.46%
43	14.21%	22.96%	-21.28%	26.56%	8.70%	6.78%	115.79%	234.93%	135.44%
44	13.62%	31.99%	-11.66%	14.33%	-10.19%	16.31%	0.00%	356.46%	102.56%
45	23.31%	50.90%	-3.17%	53.23%	-8.41%	80.52%	23.94%	152.00%	166.55%
46	16.95%	52.36%	10.14%	14.91%	64.26%	33.93%	18.18%	263.59%	189.66%
47	15.86%	48.36%	6.57%	15.72%	-4.89%	31.20%	23.53%	264.78%	208.28%
48	15.30%	40.11%	-13.73%	39.59%	21.08%	35.85%	45.76%	175.42%	101.93%
49	13.23%	21.12%	5.79%	12.11%	-7.61%	32.27%	54.55%	194.42%	231.02%
50	8.30%	33.02%	2.43%	10.48%	7.28%	27.26%	-7.32%	227.92%	200.05%
51	11.52%	44.79%	6.27%	23.52%	-3.23%	66.96%	-42.03%	549.44%	267.32%
52	3.86%	22.58%	-2.57%	2.64%	2.03%	19.10%	-63.46%	296.84%	202.67%
53	0.87%	44.48%	-3.76%	0.77%	-7.05%	21.39%	70.15%	194.67%	213.85%
54	1.73%	14.84%	-5.39%	-0.66%	-3.78%	12.36%	-44.90%	213.33%	200.22%
55	14.53%	66.12%	-25.43%	18.17%	7.65%	81.10%	-5.95%	162.09%	105.09%
56	8.29%	6.66%	0.56%	6.28%	-19.77%	50.21%	7.04%	63.49%	138.83%

¹American Indian and Alaska Native Alone, Not Latino

²Native Hawaiian and Pacific Islander Alone, Not Latino

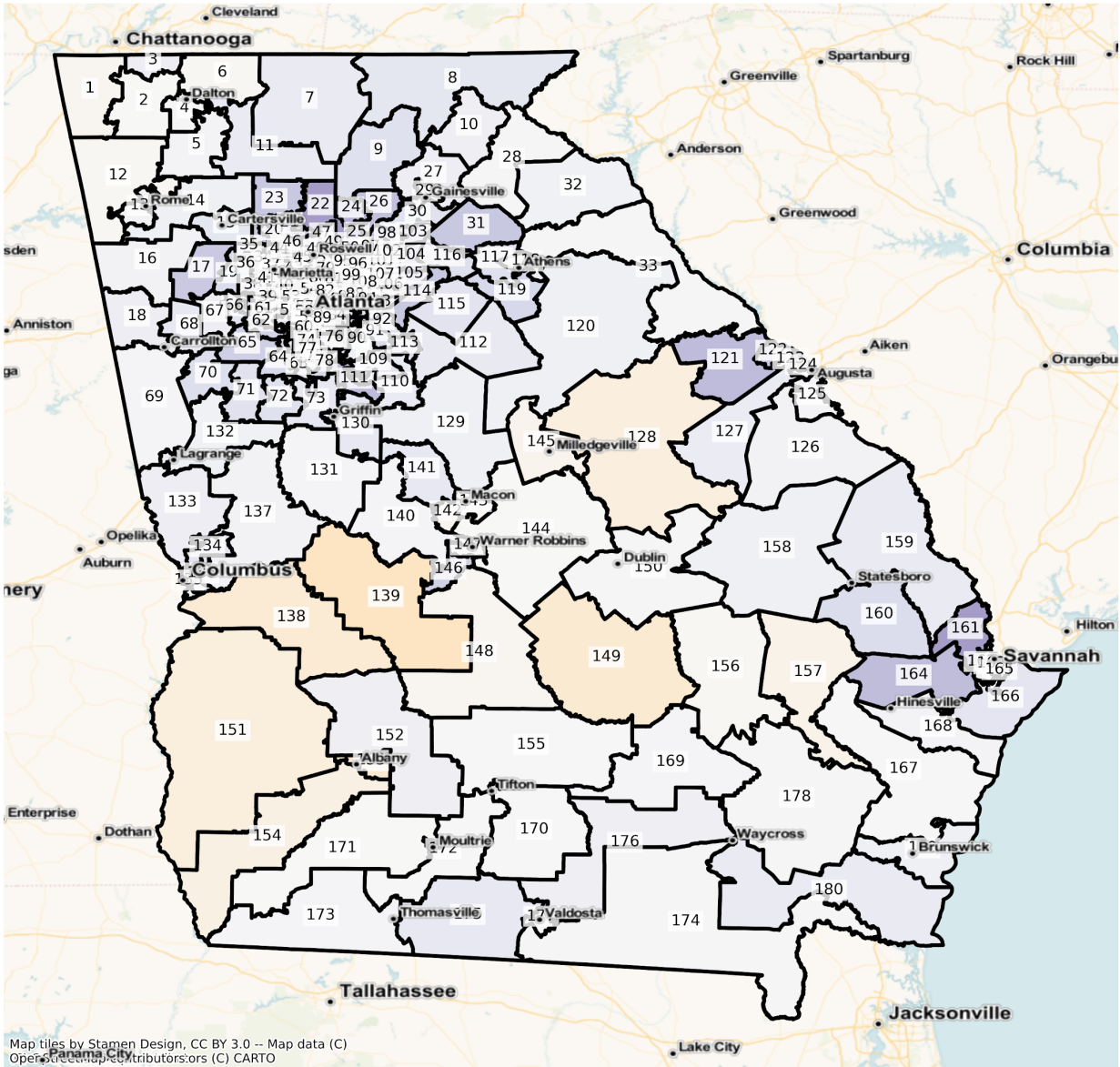
State House

The charts below display the percent change in population from 2010 to 2020 for the listed group. Please note that the color bars are fixed to be from -100% to 100% and these maps are

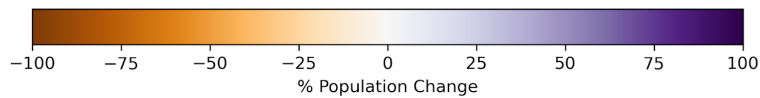
displayed in brown to purple. If the percent change in population was outside of this range, the color scheme changes to red to green to indicate a change.

Total Population

GA State House Districts
Population % Change from 2010 to 2020
Total Population



Map tiles by Stamen Design, CC BY 3.0 -- Map data (C)
OpenStreetMap contributors, (C) CARTO



Total Population from 2010 to 2020 at State House District Level

DISTRICT	Total Population 2010	Total Population 2020	Total Population % Change
1	53,612	52,750	-1.61%
2	53,910	53,650	-0.48%
3	53,366	56,969	6.75%
4	53,910	54,637	1.35%
5	54,003	55,335	2.47%
6	53,968	53,436	-0.99%
7	54,056	59,081	9.30%
8	53,857	59,871	11.17%
9	54,189	62,304	14.98%
10	53,428	56,520	5.79%
11	53,592	58,372	8.92%
12	54,166	53,616	-1.02%
13	53,436	55,160	3.23%
14	53,501	56,243	5.13%
15	53,473	59,545	11.36%
16	53,915	55,811	3.52%
17	54,036	68,483	26.74%
18	53,721	57,447	6.94%
19	54,164	63,837	17.86%
20	53,679	63,416	18.14%
21	53,973	68,301	26.55%
22	54,090	78,325	44.80%
23	53,878	68,767	27.63%
24	54,597	74,814	37.03%
25	54,157	78,718	45.35%
26	54,098	70,805	30.88%
27	53,320	56,661	6.27%
28	53,494	54,082	1.10%
29	53,527	59,633	11.41%

30	53,777	61,619	14.58%
31	53,585	68,491	27.82%
32	54,017	56,155	3.96%
33	53,538	54,330	1.48%
34	54,162	56,693	4.67%
35	53,563	58,046	8.37%
36	54,064	60,051	11.07%
37	54,233	59,857	10.37%
38	53,921	62,912	16.67%
39	53,636	60,267	12.36%
40	53,928	63,075	16.96%
41	54,198	57,976	6.97%
42	53,894	61,256	13.66%
43	53,969	59,696	10.61%
44	53,480	62,374	16.63%
45	53,969	58,143	7.73%
46	53,712	60,949	13.47%
47	54,102	64,106	18.49%
48	53,799	55,778	3.68%
49	54,001	61,297	13.51%
50	53,127	58,040	9.25%
51	53,630	56,695	5.72%
52	53,458	61,643	15.31%
53	53,497	59,222	10.70%
54	53,576	69,679	30.06%
55	53,842	61,999	15.15%
56	53,564	61,095	14.06%
57	54,205	66,540	22.76%
58	53,635	65,640	22.38%
59	53,372	58,222	9.09%
60	53,677	58,127	8.29%

61	54,780	59,942	9.42%
62	53,740	65,812	22.46%
63	53,547	58,808	9.83%
64	53,952	64,522	19.59%
65	54,298	67,833	24.93%
66	53,965	60,990	13.02%
67	54,395	57,938	6.51%
68	54,226	59,772	10.23%
69	54,130	55,096	1.78%
70	54,341	63,431	16.73%
71	54,165	61,832	14.15%
72	53,807	62,089	15.39%
73	53,970	59,669	10.56%
74	53,401	59,465	11.36%
75	53,930	59,858	10.99%
76	53,288	60,277	13.12%
77	53,704	59,646	11.06%
78	53,616	64,025	19.41%
79	53,714	60,810	13.21%
80	53,535	62,472	16.69%
81	53,590	57,889	8.02%
82	53,564	60,082	12.17%
83	53,740	58,678	9.19%
84	53,532	58,767	9.78%
85	54,313	58,677	8.03%
86	53,878	58,735	9.01%
87	54,104	61,912	14.43%
88	54,194	58,568	8.07%
89	53,750	58,776	9.35%
90	53,618	55,965	4.38%
91	54,058	63,368	17.22%

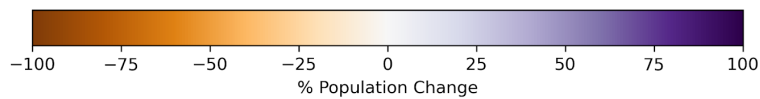
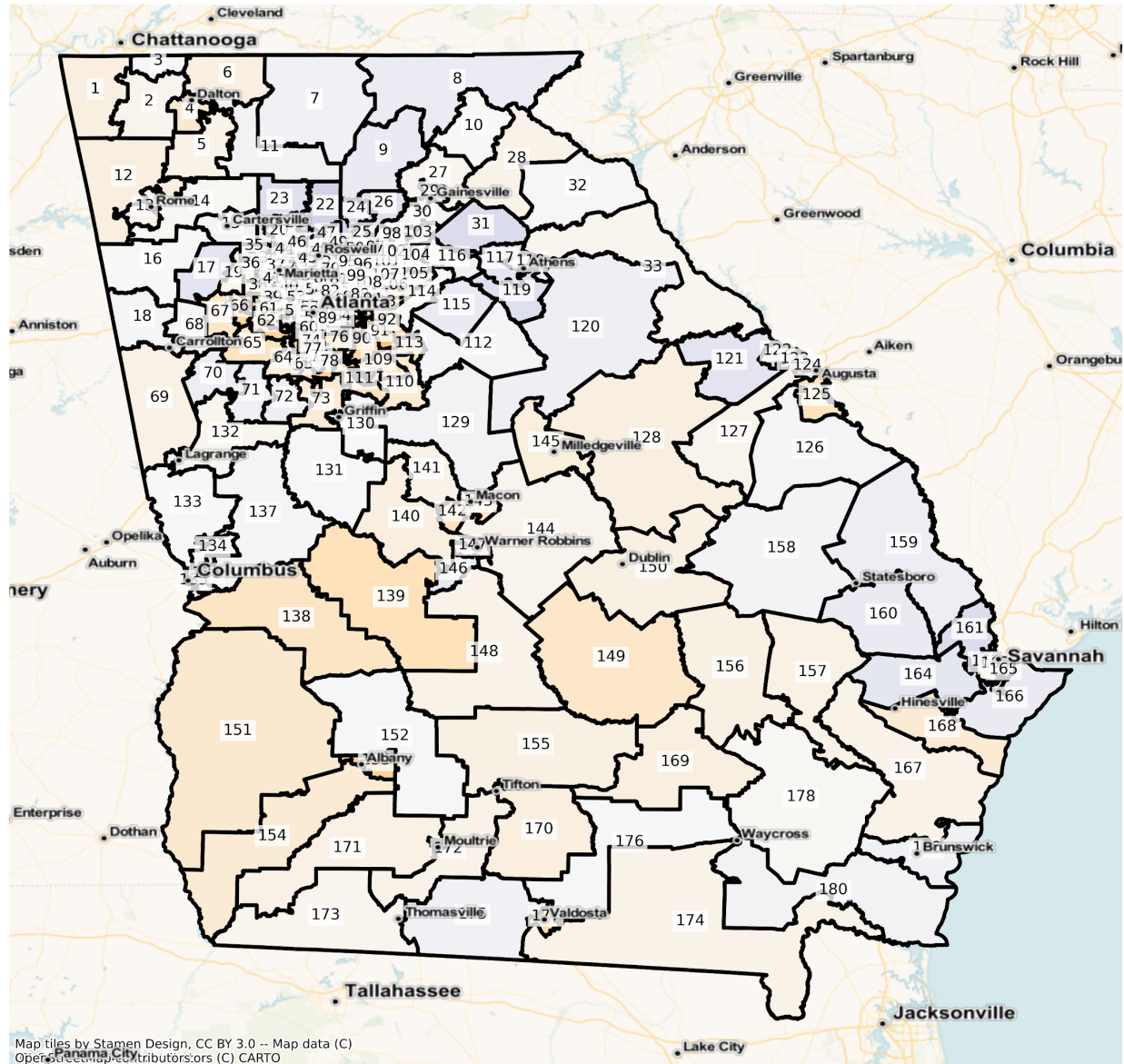
92	54,203	62,075	14.52%
93	54,333	62,986	15.93%
94	53,394	58,966	10.44%
95	54,289	59,471	9.55%
96	53,962	63,121	16.97%
97	53,821	67,840	26.05%
98	53,671	69,467	29.43%
99	53,659	57,117	6.44%
100	53,679	62,039	15.57%
101	53,747	61,586	14.59%
102	53,770	60,423	12.37%
103	53,543	68,736	28.38%
104	53,846	69,904	29.82%
105	53,470	68,968	28.98%
106	53,507	61,403	14.76%
107	53,368	61,892	15.97%
108	53,705	62,204	15.83%
109	54,155	61,435	13.44%
110	54,309	58,602	7.90%
111	54,282	72,206	33.02%
112	53,657	59,081	10.11%
113	53,636	62,518	16.56%
114	53,571	68,346	27.58%
115	53,559	61,063	14.01%
116	53,885	62,437	15.87%
117	54,173	62,457	15.29%
118	54,037	57,608	6.61%
119	53,330	64,173	20.33%
120	53,857	56,747	5.37%
121	54,068	71,948	33.07%
122	53,230	68,553	28.79%

123	54,864	53,860	-1.83%
124	53,886	52,991	-1.66%
125	54,151	55,232	2.00%
126	53,613	55,510	3.54%
127	53,672	57,823	7.73%
128	53,561	49,625	-7.35%
129	53,333	55,994	4.99%
130	53,678	59,476	10.80%
131	54,195	55,400	2.22%
132	53,746	56,148	4.47%
133	53,574	57,052	6.49%
134	53,328	59,978	12.47%
135	53,588	52,783	-1.50%
136	53,614	59,740	11.43%
137	53,399	55,266	3.50%
138	53,826	48,015	-10.80%
139	53,593	44,994	-16.05%
140	54,074	55,269	2.21%
141	54,334	59,926	10.29%
142	53,493	51,695	-3.36%
143	53,945	52,996	-1.76%
144	53,343	53,320	-0.04%
145	53,485	51,457	-3.79%
146	53,671	66,372	23.66%
147	53,333	56,551	6.03%
148	53,393	52,451	-1.76%
149	53,612	47,480	-11.44%
150	54,137	54,582	0.82%
151	54,075	49,836	-7.84%
152	53,990	57,139	5.83%
153	54,116	48,129	-11.06%

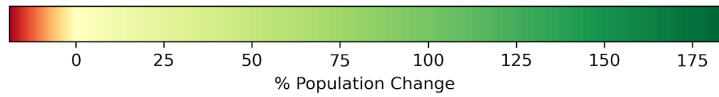
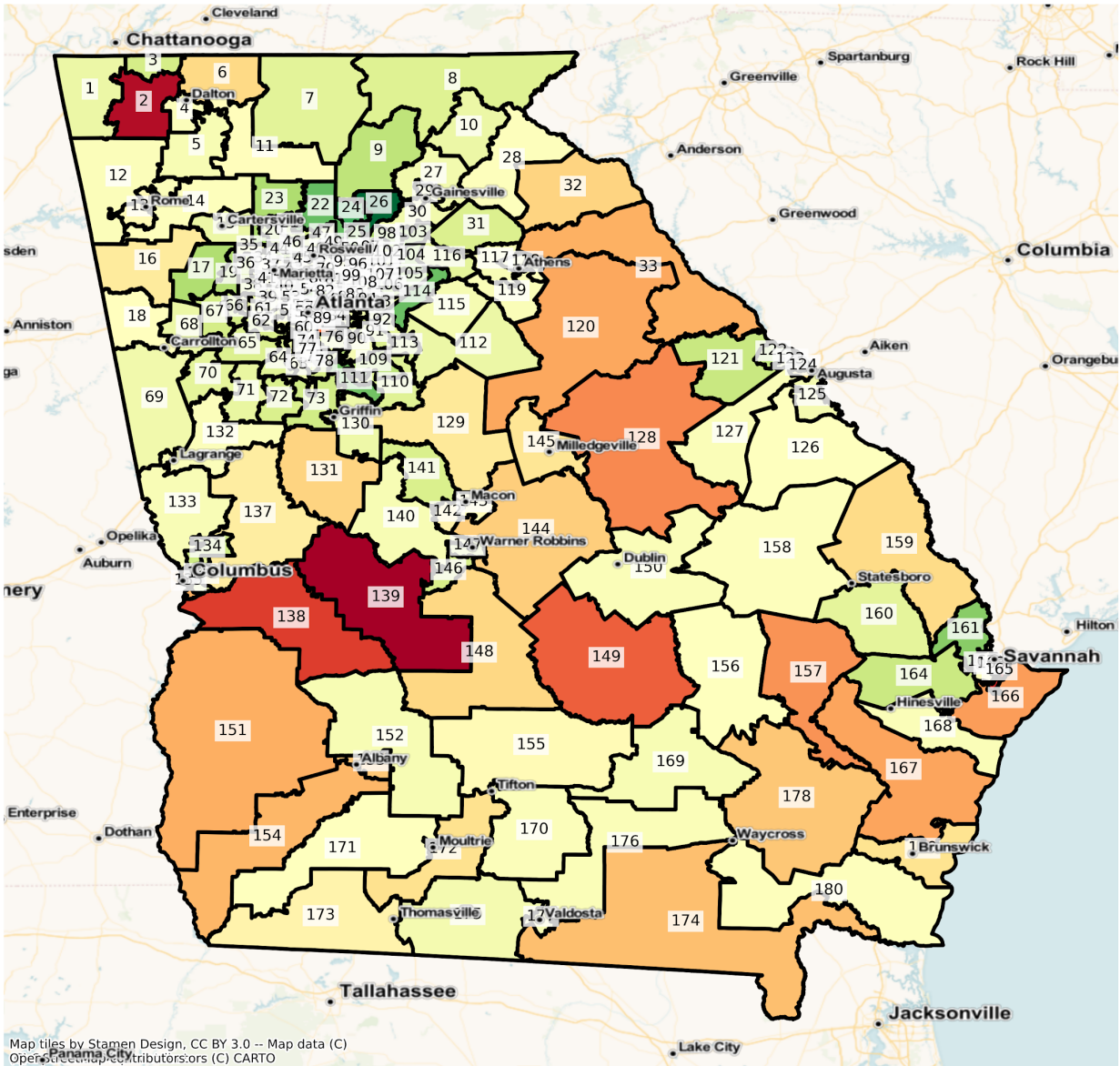
154	53,966	50,683	-6.08%
155	54,043	54,138	0.18%
156	53,639	52,840	-1.49%
157	54,332	51,816	-4.63%
158	53,864	56,467	4.83%
159	53,363	57,616	7.97%
160	53,304	62,546	17.34%
161	53,943	78,057	44.70%
162	53,563	56,360	5.22%
163	53,520	54,042	0.98%
164	53,835	71,134	32.13%
165	54,351	55,158	1.48%
166	54,038	60,603	12.15%
167	54,322	54,640	0.59%
168	54,032	55,676	3.04%
169	53,952	54,859	1.68%
170	53,301	53,411	0.21%
171	54,191	53,890	-0.56%
172	53,295	53,511	0.41%
173	54,452	55,516	1.95%
174	54,060	54,844	1.45%
175	53,621	59,296	10.58%
176	54,193	57,405	5.93%
177	54,095	54,089	-0.01%
178	53,463	53,906	0.83%
179	54,101	56,638	4.69%
180	53,321	57,987	8.75%

Population by Race and Ethnicity

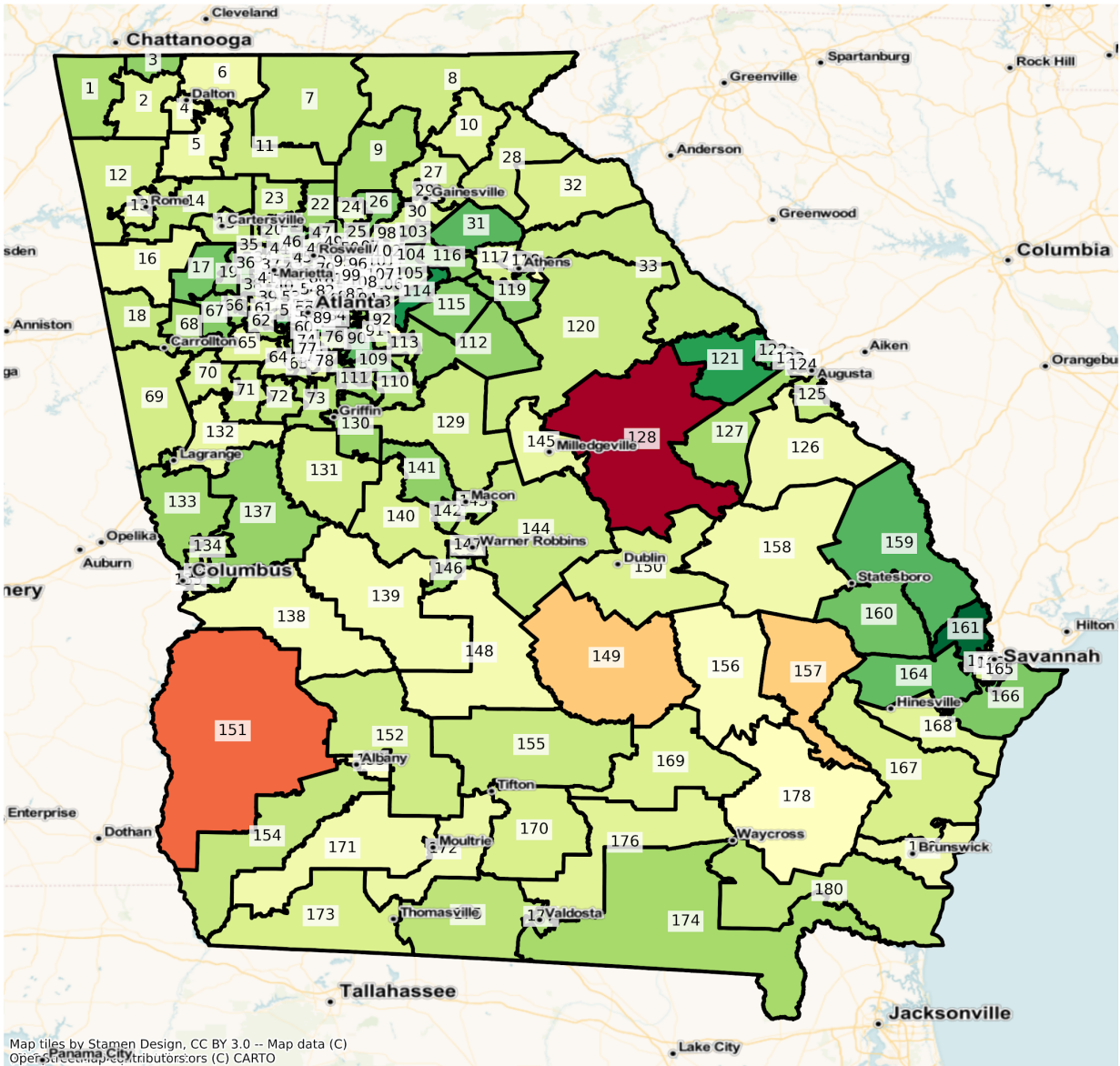
GA State House Districts
Population % Change from 2010 to 2020
Ethnicity: Not Latino White alone



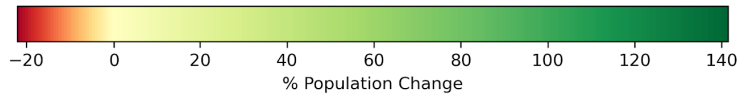
GA State House Districts
 Population % Change from 2010 to 2020
 Ethnicity: Not Latino African American alone



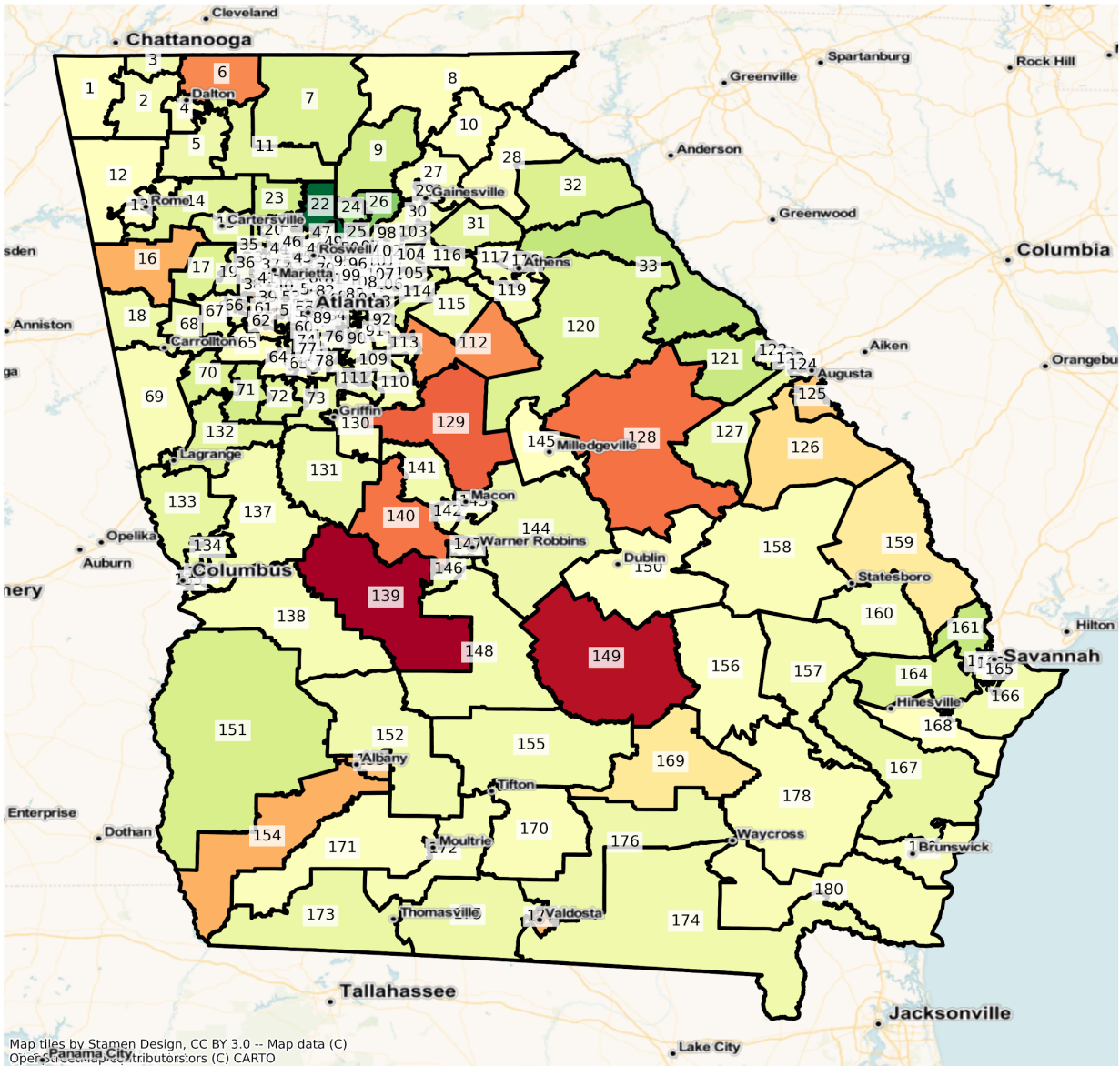
GA State House Districts
 Population % Change from 2010 to 2020
 Ethnicity: Hispanic or Latino



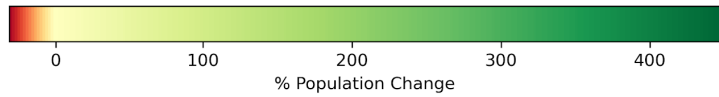
Map tiles by Stamen Design, CC BY 3.0 -- Map data (C)
 OpenStreetMap contributors, (C) CARTO



GA State House Districts
 Population % Change from 2010 to 2020
 Ethnicity: Not Latino Asian alone

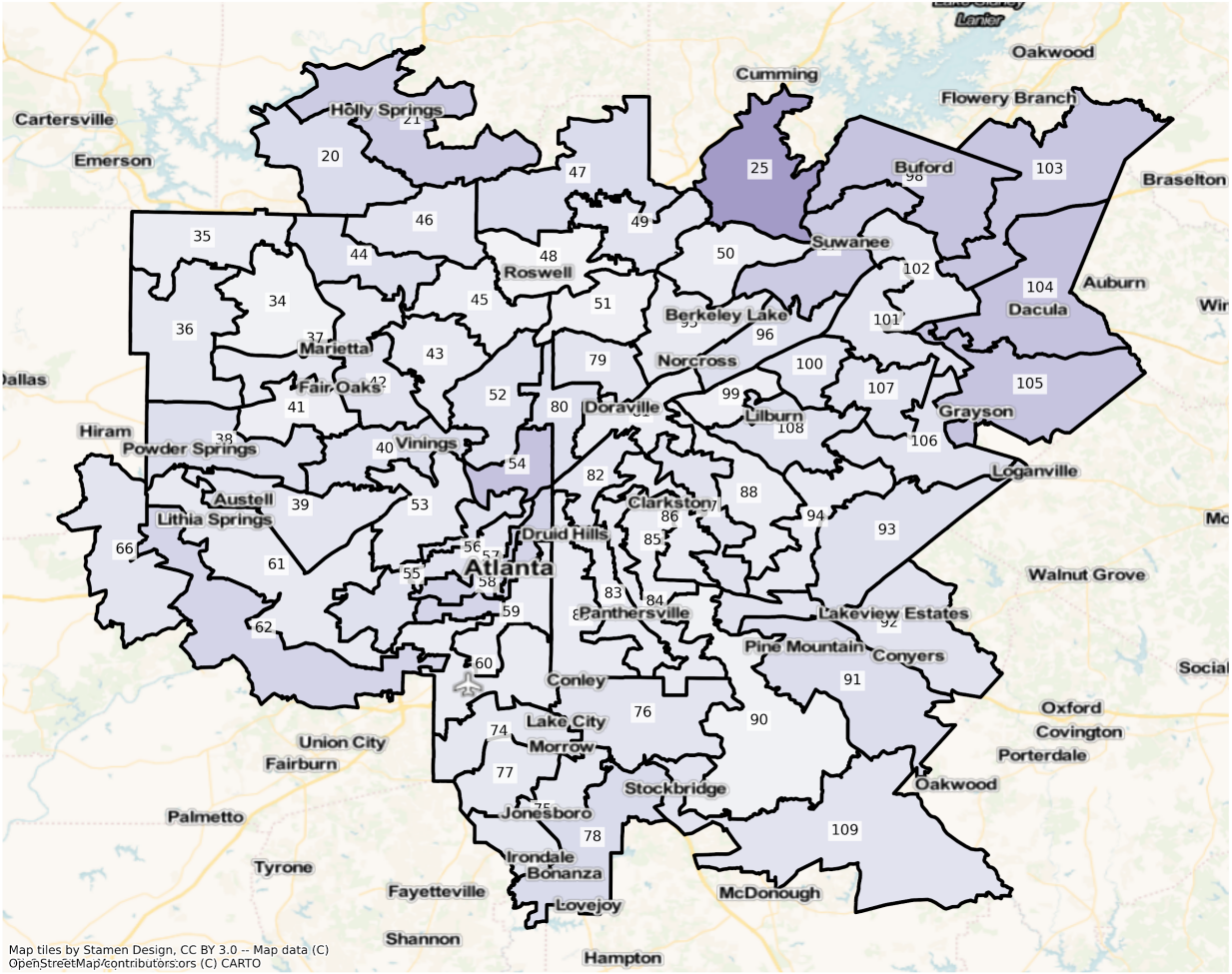


Map tiles by Stamen Design, CC BY 3.0 -- Map data (C)
 OpenStreetMap contributors, (C) CARTO

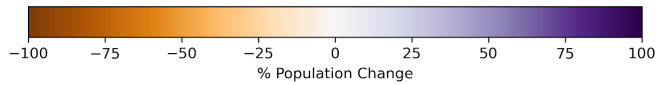


Atlanta

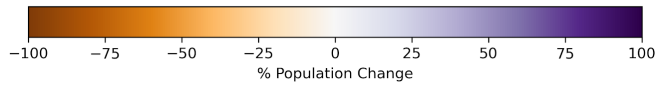
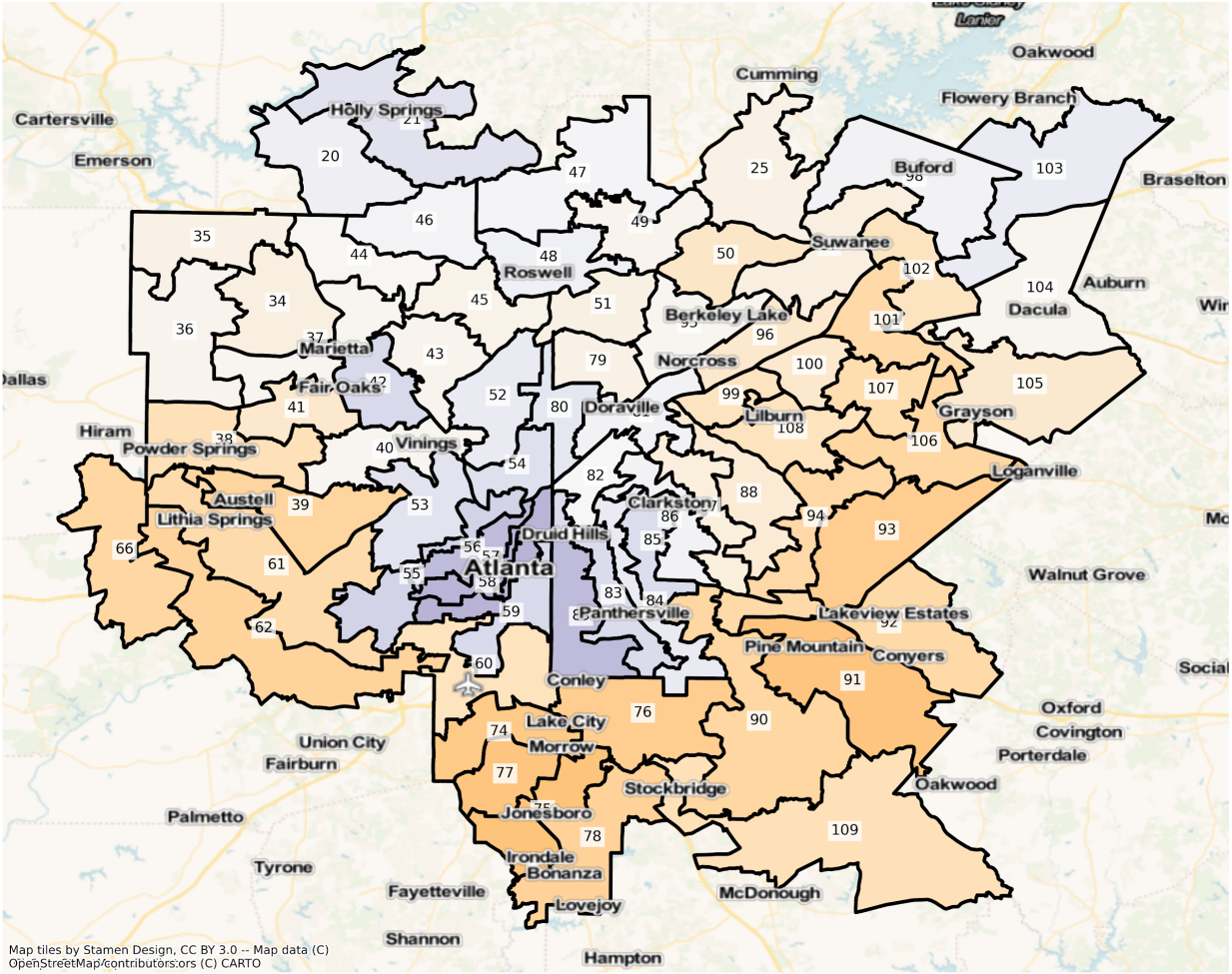
GA Atlanta State House Districts
 Population % Change from 2010 to 2020
 Total Population



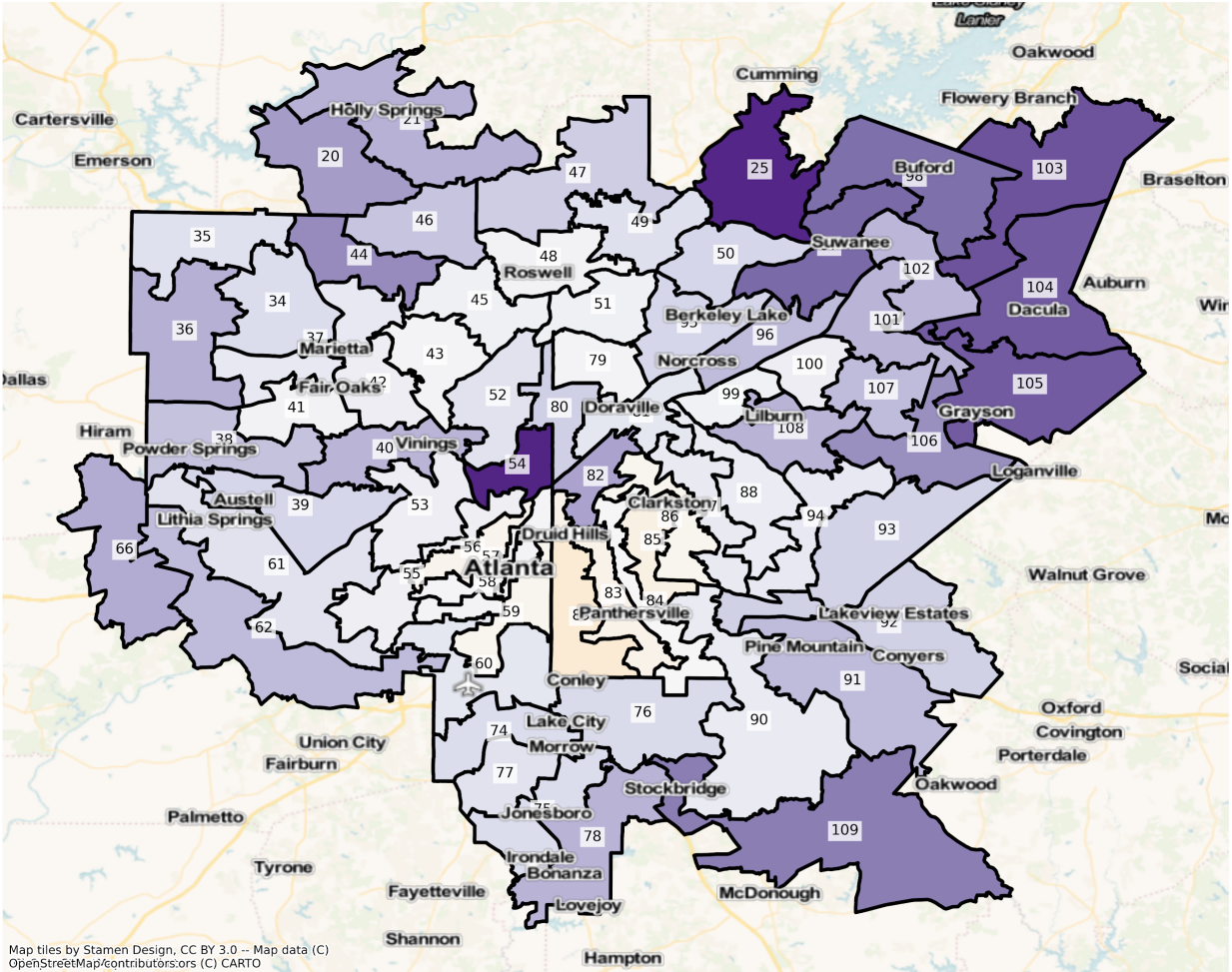
Map tiles by Stamen Design, CC BY 3.0 -- Map data (C) OpenStreetMap/contributors,ors (C) CARTO



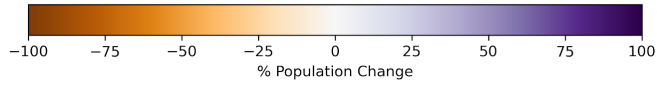
GA Atlanta State House Districts
 Population % Change from 2010 to 2020
 Ethnicity: Not Latino White alone



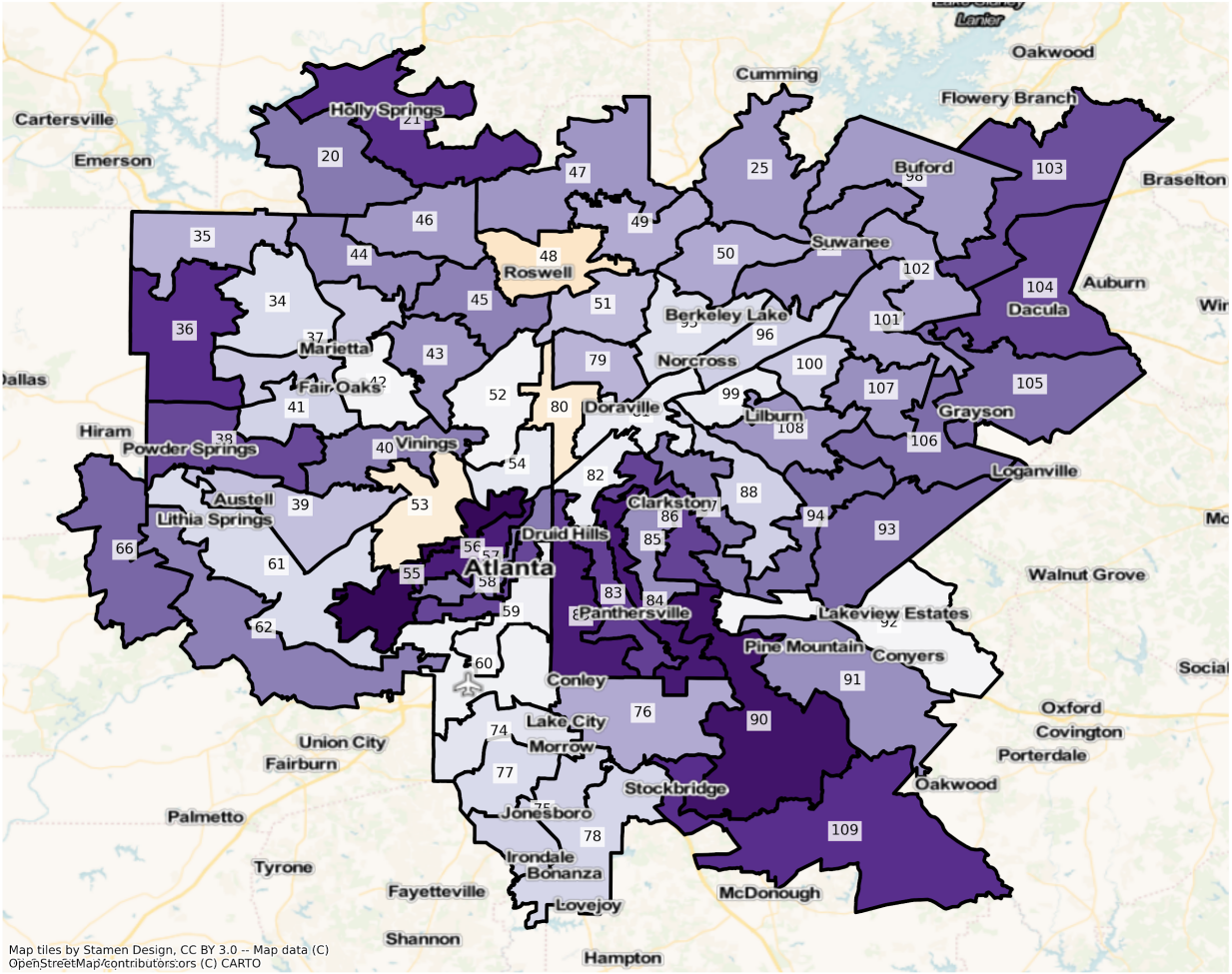
GA Atlanta State House Districts
 Population % Change from 2010 to 2020
 Ethnicity: Not Latino African American alone



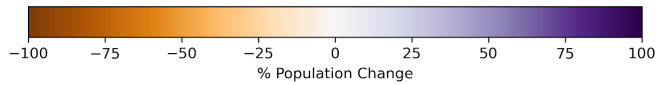
Map tiles by Stamen Design, CC BY 3.0 -- Map data (C) OpenStreetMap/contributors,ors (C) CARTO



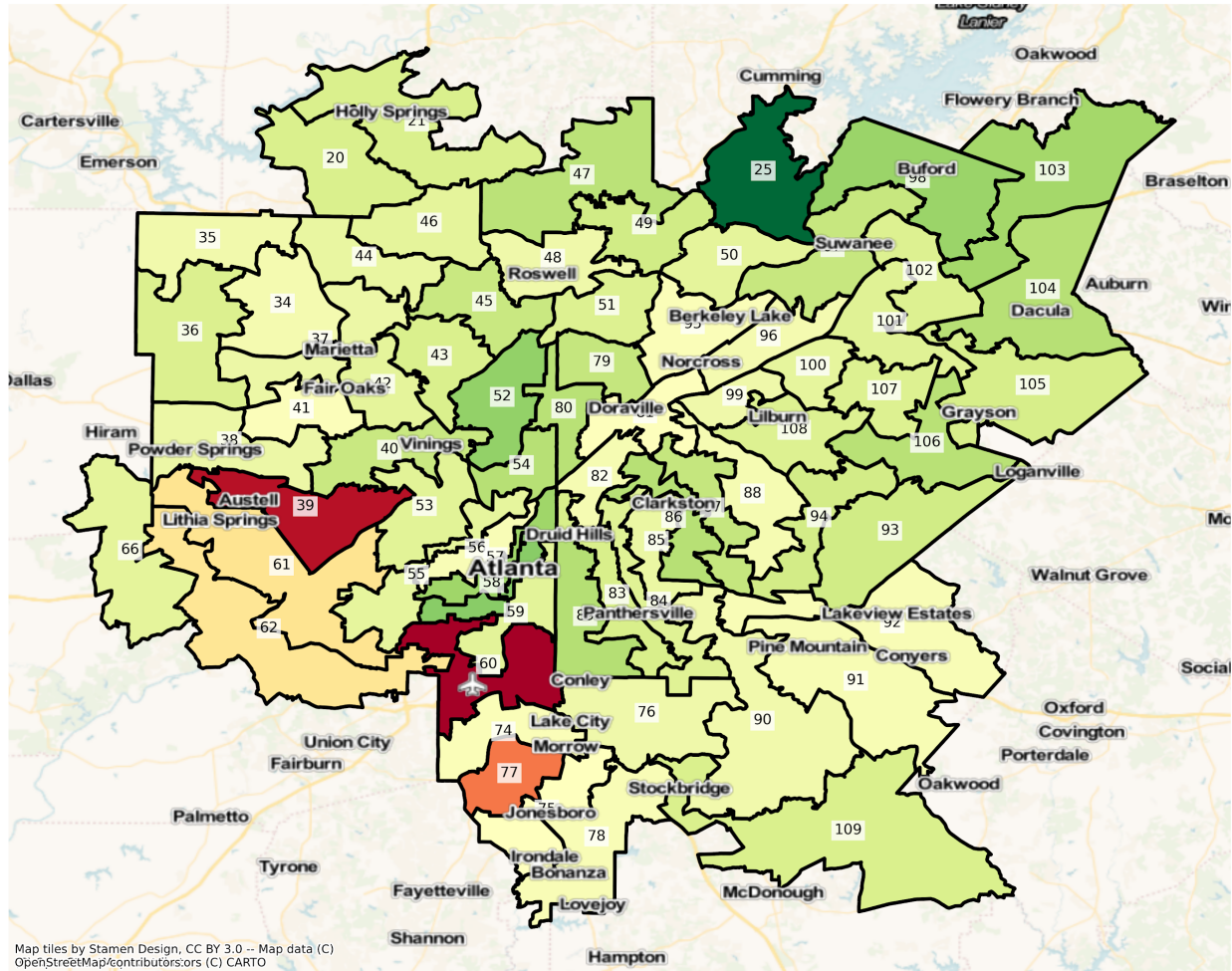
GA Atlanta State House Districts
 Population % Change from 2010 to 2020
 Ethnicity: Hispanic or Latino



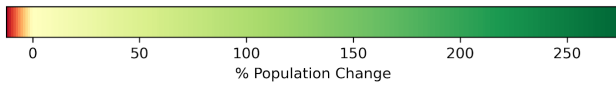
Map tiles by Stamen Design, CC BY 3.0 -- Map data (C) OpenStreetMap/contributors,ors (C) CARTO



GA Atlanta State House Districts
 Population % Change from 2010 to 2020
 Ethnicity: Not Latino Asian alone



Map tiles by Stamen Design, CC BY 3.0 -- Map data (C) OpenStreetMap/contributors,ors (C) CARTO



2010 Population by Race and Ethnicity at State House District Level

DISTRICT	Total Population	Hispanic or Latino Origin	White Alone, not Latino	African American Alone, not Latino	AIAN Alone, not Latino ¹	Asian Alone, not Latino	NHPI Alone, not Latino ²	Other Alone, not Latino	Two or More, not Latino
1	53,612	908	49,975	1,524	172	250	14	58	711
2	53,910	1,772	49,126	1,912	103	249	24	33	691

3	53,366	1,231	49,178	1,203	166	723	28	40	797
4	53,910	22,048	27,943	2,380	90	826	18	31	574
5	54,003	7,943	42,822	1,850	140	500	46	39	663
6	53,968	11,676	40,067	1,009	116	458	11	70	561
7	54,056	3,140	49,852	175	147	151	21	35	535
8	53,857	2,112	50,425	323	168	269	15	24	521
9	54,189	2,405	50,036	446	241	277	37	23	724
10	53,428	5,147	44,927	1,676	155	745	46	38	694
11	53,592	3,485	48,743	514	113	203	8	23	503
12	54,166	3,014	44,876	4,796	107	593	17	52	711
13	53,436	6,711	34,228	10,811	102	678	38	76	792
14	53,501	2,658	46,326	3,390	125	280	18	45	659
15	53,473	4,980	40,091	6,871	170	456	39	55	811
16	53,915	5,275	41,708	5,721	119	307	18	62	705
17	54,036	2,553	42,626	7,269	121	390	29	83	965
18	53,721	3,427	40,008	8,699	137	432	3	113	902
19	54,164	3,119	39,471	9,655	145	626	17	147	984
20	53,679	4,742	42,915	3,775	133	1,017	18	122	957
21	53,973	4,935	44,385	2,730	136	805	19	127	836
22	54,090	4,320	45,666	1,851	110	1,419	10	91	623
23	53,878	7,477	41,528	3,128	172	622	39	121	791
24	54,597	6,402	44,064	1,255	109	1,996	19	120	632
25	54,157	3,338	40,177	1,832	84	7,798	8	91	829
26	54,098	4,241	46,974	864	123	1,231	18	69	578
27	53,320	7,710	42,702	1,658	139	427	25	49	610
28	53,494	2,351	46,232	3,366	121	635	16	49	724
29	53,527	23,417	21,728	6,426	77	1,227	26	79	547
30	53,777	13,870	34,183	3,853	120	1,117	5	83	546
31	53,585	3,171	45,193	3,395	87	960	10	53	716
32	54,017	1,802	44,414	6,654	73	383	4	48	639
33	53,538	2,153	39,020	11,409	119	289	6	54	488

34	54,162	4,900	35,494	9,609	136	2,677	25	218	1,103
35	53,563	5,184	33,215	11,420	111	2,216	17	229	1,171
36	54,064	2,298	42,960	6,668	91	1,256	19	89	683
37	54,233	9,293	29,928	11,636	93	2,104	39	145	995
38	53,921	6,021	21,662	23,746	121	1,069	10	182	1,110
39	53,636	9,996	13,746	27,624	102	1,017	11	149	991
40	53,928	3,218	34,750	11,708	117	2,867	15	201	1,052
41	54,198	16,362	15,504	19,465	95	1,586	34	182	970
42	53,894	14,955	14,696	20,360	131	1,796	30	656	1,270
43	53,969	3,174	35,841	8,068	90	5,211	19	455	1,111
44	53,480	4,140	38,218	6,369	114	3,356	15	196	1,072
45	53,969	2,460	42,202	4,409	59	3,577	24	292	946
46	53,712	4,126	42,483	3,586	87	2,209	10	181	1,030
47	54,102	2,934	40,209	4,260	80	5,429	11	209	970
48	53,799	13,047	30,837	6,766	102	1,858	31	212	946
49	54,001	4,026	36,335	5,283	68	6,944	27	220	1,098
50	53,127	2,742	28,776	5,090	49	15,135	17	164	1,154
51	53,630	5,150	32,948	11,222	91	2,626	17	407	1,169
52	53,458	8,262	36,094	6,256	54	1,815	17	151	809
53	53,497	4,481	14,086	32,879	72	1,147	13	77	742
54	53,576	4,581	39,359	5,922	74	2,693	18	109	820
55	53,842	1,482	12,873	37,333	97	1,103	20	77	857
56	53,564	1,832	15,272	30,658	95	4,483	14	99	1,111
57	54,205	2,798	18,387	30,408	127	1,526	14	86	859
58	53,635	2,092	17,173	31,993	118	1,113	13	120	1,013
59	53,372	6,170	16,981	28,171	114	976	20	86	854
60	53,677	7,554	5,727	38,363	138	1,085	14	76	720
61	54,780	4,518	10,422	38,191	111	525	54	108	851
62	53,740	2,553	11,746	37,726	134	461	26	105	989
63	53,547	2,278	13,780	34,901	132	1,401	37	90	928
64	53,952	3,109	15,170	33,527	112	996	14	122	902

65	54,298	4,408	10,376	37,842	107	540	16	139	870
66	53,965	3,634	25,522	22,660	125	770	35	145	1,074
67	54,395	3,042	38,693	10,931	140	568	36	95	890
68	54,226	2,456	41,400	8,764	146	368	15	114	963
69	54,130	1,811	43,624	7,200	106	518	16	79	776
70	54,341	3,742	37,753	10,676	88	1,023	35	72	952
71	54,165	3,399	43,014	5,373	142	1,271	21	82	863
72	53,807	3,036	44,658	3,532	102	1,564	22	94	799
73	53,970	2,621	34,782	14,680	127	749	16	94	901
74	53,401	8,406	6,070	33,822	128	3,986	16	110	863
75	53,930	5,741	8,304	36,346	107	2,289	31	99	1,013
76	53,288	4,951	10,921	34,069	95	2,347	22	94	789
77	53,704	8,525	5,285	36,657	110	2,163	11	89	864
78	53,616	5,790	12,451	31,363	141	2,567	31	136	1,137
79	53,714	7,608	31,542	7,671	111	5,692	17	144	929
80	53,535	11,065	31,713	5,792	87	3,926	31	153	768
81	53,590	20,956	20,107	5,297	101	6,241	33	111	744
82	53,564	12,180	27,895	7,634	69	4,719	20	124	923
83	53,740	1,473	17,019	33,437	92	856	10	83	770
84	53,532	1,273	16,789	32,684	76	1,778	18	107	807
85	54,313	1,965	12,400	31,734	133	6,501	14	206	1,360
86	53,878	2,214	14,639	33,161	100	2,645	30	146	943
87	54,104	3,125	10,784	36,353	114	2,591	15	173	949
88	54,194	6,361	10,756	34,175	100	1,630	27	148	997
89	53,750	1,497	15,931	34,725	72	562	11	95	857
90	53,618	1,408	14,215	36,271	96	721	11	103	793
91	54,058	2,176	15,060	34,956	100	789	14	117	846
92	54,203	6,562	9,904	36,264	127	430	44	107	765
93	54,333	3,671	12,647	35,638	104	885	23	176	1,189
94	53,394	3,539	11,079	35,707	110	1,748	28	155	1,028
95	54,289	8,319	27,270	11,077	86	6,216	30	155	1,136

96	53,962	18,505	13,375	9,800	90	11,060	24	122	986
97	53,821	5,064	31,162	5,695	78	10,679	11	126	1,006
98	53,671	8,695	33,321	6,518	67	3,877	45	167	981
99	53,659	29,958	6,902	10,687	92	5,132	34	95	759
100	53,679	20,465	8,795	16,619	132	6,329	25	229	1,085
101	53,747	11,208	23,221	10,844	85	7,089	12	146	1,142
102	53,770	7,262	28,133	9,842	122	6,999	19	200	1,193
103	53,543	5,619	39,251	5,301	113	2,425	9	100	725
104	53,846	6,741	31,554	12,044	87	2,260	28	132	1,000
105	53,470	6,516	25,943	17,385	116	2,188	10	259	1,053
106	53,507	5,451	28,833	14,805	120	2,959	24	240	1,075
107	53,368	10,021	23,133	11,752	104	7,130	15	159	1,054
108	53,705	10,326	25,920	8,512	127	7,687	26	124	983
109	54,155	2,434	33,144	16,096	150	1,237	19	118	957
110	54,309	2,450	33,496	16,792	127	420	18	95	911
111	54,282	3,217	29,546	18,056	132	2,038	43	156	1,094
112	53,657	1,664	38,882	11,705	125	555	13	62	651
113	53,636	3,128	17,478	31,249	76	538	18	116	1,033
114	53,571	3,148	40,171	8,173	117	1,026	15	152	769
115	53,559	1,482	40,133	10,437	118	577	24	72	716
116	53,885	4,524	40,759	5,533	110	1,888	28	120	923
117	54,173	4,060	37,531	9,545	58	2,069	19	91	800
118	54,037	8,197	25,675	18,003	67	1,143	12	108	832
119	53,330	2,297	41,045	6,203	64	2,766	23	117	815
120	53,857	2,780	33,466	16,532	92	258	16	64	649
121	54,068	2,902	35,969	13,220	187	577	72	70	1,071
122	53,230	2,258	40,787	6,088	128	2,646	68	99	1,156
123	54,864	2,003	39,627	9,659	130	2,117	84	93	1,151
124	53,886	2,081	18,877	30,649	154	1,008	65	68	984
125	54,151	1,676	21,882	28,681	135	472	65	81	1,159
126	53,613	1,876	17,708	32,236	141	512	125	60	955

127	53,672	2,937	19,566	28,868	155	846	117	95	1,088
128	53,561	957	21,831	30,075	80	217	5	41	355
129	53,333	1,278	36,673	14,313	126	287	5	47	604
130	53,678	1,881	31,568	18,823	98	483	23	64	738
131	54,195	941	38,963	13,228	134	205	5	48	671
132	53,746	2,993	26,344	22,738	150	661	10	62	788
133	53,574	1,442	40,254	10,136	128	885	20	72	637
134	53,328	2,977	38,650	8,480	152	1,713	96	149	1,111
135	53,588	4,186	17,528	29,719	208	463	101	103	1,280
136	53,614	3,646	17,610	29,537	164	1,133	116	127	1,281
137	53,399	1,627	21,560	28,562	141	510	65	64	870
138	53,826	3,609	27,080	21,356	201	731	84	31	734
139	53,593	2,853	19,545	30,252	76	389	23	21	434
140	54,074	2,454	32,394	17,595	165	546	18	71	831
141	54,334	1,274	37,211	13,225	113	1,706	18	83	704
142	53,493	1,517	15,686	35,118	87	438	21	57	569
143	53,945	1,502	18,068	33,145	95	415	21	68	631
144	53,343	1,376	36,000	14,852	113	392	25	64	521
145	53,485	1,251	29,610	21,288	101	597	24	61	553
146	53,671	2,228	35,290	13,161	114	1,615	32	83	1,148
147	53,333	4,311	30,966	15,176	179	1,242	52	82	1,325
148	53,393	1,831	31,588	18,927	94	395	10	54	494
149	53,612	3,690	32,256	16,921	69	238	7	20	411
150	54,137	1,247	33,064	18,681	87	482	4	34	538
151	54,075	2,394	21,467	29,484	90	222	6	29	383
152	53,990	1,132	38,631	12,780	117	714	23	37	556
153	54,116	1,580	17,434	33,809	127	494	45	47	580
154	53,966	862	19,054	33,180	82	264	7	43	474
155	54,043	2,831	35,012	15,175	89	427	3	64	442
156	53,639	4,969	35,607	12,125	71	305	25	54	483
157	54,332	4,887	33,828	14,602	106	262	13	28	606

158	53,864	2,949	31,523	18,420	96	333	19	62	462
159	53,363	1,038	35,817	15,330	127	362	14	38	637
160	53,304	1,887	38,736	10,909	132	754	43	91	752
161	53,943	2,617	39,091	9,840	111	1,170	32	95	987
162	53,563	5,441	18,105	27,391	150	1,205	96	110	1,065
163	53,520	1,758	21,922	27,890	109	961	28	80	772
164	53,835	4,425	32,944	13,108	199	1,444	120	142	1,453
165	54,351	2,028	19,570	30,729	121	918	27	84	874
166	54,038	1,443	46,072	4,217	99	1,427	17	74	689
167	54,322	3,335	37,331	11,882	165	544	71	67	927
168	54,032	4,881	21,896	23,748	197	1,051	294	130	1,835
169	53,952	5,644	34,976	12,269	95	353	19	46	550
170	53,301	3,742	36,469	11,986	106	435	12	33	518
171	54,191	3,444	28,914	20,938	113	280	5	48	449
172	53,295	7,770	29,110	15,372	139	365	13	49	477
173	54,452	3,675	29,938	19,728	257	298	13	72	471
174	54,060	3,582	36,337	12,583	233	305	49	73	898
175	53,621	2,007	36,163	14,029	148	644	23	53	554
176	54,193	4,129	35,776	12,748	187	438	34	50	831
177	54,095	2,298	20,712	29,221	118	699	48	172	827
178	53,463	2,402	45,535	4,463	183	203	19	29	629
179	54,101	3,796	31,478	17,316	103	505	59	86	758
180	53,321	2,504	38,299	10,163	238	811	50	72	1,184

¹American Indian and Alaska Native Alone, Not Latino

²Native Hawaiian and Pacific Islander Alone, Not Latino

2020 Population by Race and Ethnicity at State House District Level

DISTRICT	Total Population	Hispanic or Latino Origin	White Alone, not Latino	African American Alone, not Latino	AIAN Alone, not Latino ¹	Asian Alone, not Latino	NHPI Alone, not Latino ²	Other Alone, not Latino	Two or More, not Latino
1	52,750	1,382	46,681	1,790	150	253	21	157	2,316

2	53,650	2,200	47,254	1,574	118	309	10	127	2,058
3	56,969	2,043	49,409	1,669	149	966	83	106	2,544
4	54,637	25,024	24,621	2,463	108	955	14	173	1,279
5	55,335	9,111	41,116	1,987	105	688	15	122	2,191
6	53,436	12,927	37,455	966	88	387	6	133	1,474
7	59,081	4,392	51,975	220	154	263	3	143	1,931
8	59,871	2,814	54,078	422	151	286	4	164	1,952
9	62,304	3,696	54,223	689	216	546	37	222	2,675
10	56,520	6,468	44,749	1,984	146	810	30	165	2,168
11	58,372	4,681	50,455	513	148	318	5	105	2,147
12	53,616	4,003	41,788	4,933	89	596	3	227	1,977
13	55,160	8,364	32,980	10,734	124	720	11	201	2,026
14	56,243	3,744	45,899	3,467	105	463	24	198	2,343
15	59,545	6,980	40,720	8,103	156	754	26	279	2,527
16	55,811	6,080	41,499	5,580	129	271	21	178	2,053
17	68,483	4,551	47,665	12,019	145	689	42	398	2,974
18	57,447	4,770	40,859	8,688	131	608	13	216	2,162
19	63,837	5,346	38,304	15,662	163	978	54	446	2,884
20	63,416	7,462	45,415	5,482	110	1,552	23	423	2,949
21	68,301	8,742	50,929	3,753	130	1,231	29	414	3,073
22	78,325	6,905	56,098	3,867	156	7,760	33	404	3,102
23	68,767	10,598	48,140	5,224	155	1,269	17	307	3,057
24	74,814	9,143	52,708	2,885	123	6,458	29	426	3,042
25	78,718	4,911	38,146	3,300	140	29,214	17	399	2,591
26	70,805	7,342	53,964	2,443	124	3,935	25	268	2,704
27	56,661	10,440	41,504	1,852	112	513	19	169	2,052
28	54,082	3,098	44,364	3,447	145	698	22	124	2,184
29	59,633	24,733	24,950	6,722	80	1,457	36	238	1,417
30	61,619	18,490	35,069	4,379	94	1,525	21	214	1,827
31	68,491	5,983	53,347	4,528	113	1,650	27	263	2,580
32	56,155	2,267	44,734	6,346	77	681	5	199	1,846

33	54,330	2,959	38,036	10,574	91	655	10	153	1,852
34	56,693	5,833	33,212	11,298	78	3,112	16	551	2,593
35	58,046	7,098	31,563	13,157	143	2,645	18	498	2,924
36	60,051	4,081	41,526	9,180	47	1,885	21	447	2,864
37	59,857	11,801	29,244	12,831	109	2,675	20	550	2,627
38	62,912	10,264	17,485	30,824	137	1,357	48	432	2,365
39	60,267	13,113	10,260	33,556	108	902	18	386	1,924
40	63,075	5,026	33,945	15,846	105	4,949	16	422	2,766
41	57,976	20,191	13,555	20,088	88	1,686	25	521	1,822
42	61,256	15,227	17,623	21,751	115	2,465	39	981	3,055
43	59,696	4,694	34,493	8,281	109	7,935	20	1,101	3,063
44	62,374	6,296	37,871	9,650	133	4,416	31	677	3,300
45	58,143	3,802	40,505	4,629	53	6,113	13	399	2,629
46	60,949	6,047	43,677	4,638	80	3,025	20	563	2,899
47	64,106	4,317	41,082	5,333	92	10,098	15	432	2,737
48	55,778	11,158	32,518	7,024	63	2,294	26	459	2,236
49	61,297	5,641	34,985	6,140	89	11,349	19	489	2,585
50	58,040	3,866	24,542	6,186	52	20,800	34	369	2,191
51	56,695	6,865	30,960	11,781	71	3,894	20	494	2,610
52	61,643	8,559	39,055	7,162	62	4,097	25	354	2,329
53	59,222	4,028	15,958	35,097	95	1,637	35	310	2,062
54	69,679	5,096	45,618	10,732	109	5,158	16	377	2,573
55	61,999	2,893	15,832	39,485	99	1,495	10	292	1,893
56	61,095	3,386	20,350	29,621	105	4,963	45	286	2,339
57	66,540	4,385	24,989	31,049	80	3,274	13	361	2,389
58	65,640	3,593	23,465	32,888	121	2,599	20	395	2,559
59	58,222	6,514	20,338	27,371	123	1,365	28	266	2,217
60	58,127	7,872	4,716	42,682	132	953	13	307	1,452
61	59,942	5,389	8,079	43,785	96	514	36	322	1,721
62	65,812	3,956	8,637	50,291	117	452	19	385	1,955
63	58,808	3,406	10,594	40,793	115	1,546	19	477	1,858

64	64,522	4,132	13,659	43,086	104	1,066	21	520	1,934
65	67,833	5,491	8,624	50,769	111	593	20	366	1,859
66	60,990	5,917	19,246	31,561	143	1,052	50	498	2,523
67	57,938	5,213	33,497	15,208	147	748	23	391	2,711
68	59,772	3,787	41,804	10,385	158	501	11	328	2,798
69	55,096	2,357	41,546	8,177	101	593	18	151	2,153
70	63,431	5,049	40,156	13,393	128	1,872	25	307	2,501
71	61,832	4,605	45,243	6,479	140	2,478	34	302	2,551
72	62,089	4,292	47,306	4,763	82	2,733	20	341	2,552
73	59,669	3,906	30,983	20,947	115	1,170	11	287	2,250
74	59,465	9,459	4,186	39,832	122	4,259	23	285	1,299
75	59,858	7,089	5,478	42,711	99	2,295	34	372	1,780
76	60,277	6,941	7,692	40,509	87	2,863	26	373	1,786
77	59,646	10,237	3,511	41,851	141	2,013	18	397	1,478
78	64,025	7,024	9,047	42,653	131	2,801	27	401	1,941
79	60,810	10,354	29,858	7,875	47	10,018	22	430	2,206
80	62,472	9,846	35,264	7,227	69	7,462	27	358	2,219
81	57,889	22,524	20,890	5,915	98	6,416	17	366	1,663
82	60,082	13,037	28,059	10,903	68	5,404	14	406	2,191
83	58,678	2,544	20,121	32,069	98	1,320	17	301	2,208
84	58,767	2,368	18,187	32,880	87	2,567	17	363	2,298
85	58,677	2,945	14,606	29,836	107	8,390	15	406	2,372
86	58,735	3,806	15,116	32,370	112	5,051	10	390	1,880
87	61,912	4,911	9,908	39,858	127	4,567	10	375	2,156
88	58,568	7,930	9,624	36,674	146	1,869	30	389	1,906
89	58,776	2,778	21,192	30,987	68	1,086	18	354	2,293
90	55,965	2,665	10,667	39,425	80	866	11	351	1,900
91	63,368	3,254	10,086	46,591	89	887	30	414	2,017
92	62,075	6,677	7,660	44,957	92	471	31	342	1,845
93	62,986	5,942	8,921	43,859	113	1,439	27	480	2,205
94	58,966	5,662	8,430	39,491	109	2,830	19	378	2,047

95	59,471	9,682	26,695	13,474	97	6,687	22	406	2,408
96	63,121	23,117	11,636	13,065	95	12,934	34	426	1,814
97	67,840	7,629	29,174	9,221	97	18,534	22	431	2,732
98	69,467	12,692	34,544	10,439	84	8,462	35	393	2,818
99	57,117	32,460	5,740	11,158	76	6,243	30	363	1,047
100	62,039	26,061	7,629	17,697	108	8,554	18	408	1,564
101	61,586	16,193	17,819	14,695	106	10,265	18	388	2,102
102	60,423	10,334	23,481	13,288	85	10,391	31	415	2,398
103	68,736	9,503	42,157	8,907	106	5,119	24	319	2,601
104	69,904	11,492	30,722	19,978	89	4,311	21	517	2,774
105	68,968	10,546	22,839	28,839	125	3,448	25	498	2,648
106	61,403	8,814	21,665	22,096	130	5,587	22	540	2,549
107	61,892	15,023	18,184	15,676	92	10,529	25	414	1,949
108	62,204	15,244	21,265	11,587	107	11,470	23	382	2,126
109	61,435	4,334	26,919	25,143	117	1,891	18	402	2,611
110	58,602	3,683	29,693	21,770	96	524	46	407	2,383
111	72,206	5,221	24,096	36,529	123	2,925	47	528	2,737
112	59,081	2,748	39,682	13,872	94	472	19	255	1,939
113	62,518	4,425	13,953	40,438	119	719	78	485	2,301
114	68,346	6,770	39,677	16,823	130	1,729	40	473	2,704
115	61,063	2,539	43,555	11,421	118	803	28	308	2,291
116	62,437	7,603	42,406	6,930	98	2,557	10	330	2,503
117	62,457	5,351	41,636	10,191	113	2,697	30	321	2,118
118	57,608	8,804	27,064	18,029	133	1,130	31	538	1,879
119	64,173	3,858	47,544	6,498	104	3,415	10	344	2,400
120	56,747	3,781	35,336	15,239	107	451	8	154	1,671
121	71,948	6,031	40,681	19,458	208	1,238	126	331	3,875
122	68,553	4,308	46,547	9,259	110	4,120	83	422	3,704
123	53,860	3,038	35,328	10,076	106	2,337	111	264	2,600
124	52,991	2,660	16,785	29,858	123	1,255	100	231	1,979
125	55,232	2,355	18,023	31,921	141	430	87	241	2,034

126	55,510	2,087	18,078	32,600	135	479	94	198	1,839
127	57,823	4,609	18,904	30,198	142	1,369	84	225	2,292
128	49,625	746	20,362	27,192	91	179	17	62	976
129	55,994	1,722	37,980	13,929	105	232	15	216	1,795
130	59,476	3,025	31,623	21,820	118	558	24	240	2,068
131	55,400	1,234	39,175	12,618	95	295	3	192	1,788
132	56,148	3,478	25,708	23,683	126	1,100	25	217	1,811
133	57,052	2,287	40,181	10,737	133	1,322	34	223	2,135
134	59,978	4,490	37,198	12,195	163	2,469	133	380	2,950
135	52,783	4,914	16,767	27,618	141	572	136	293	2,342
136	59,740	4,713	14,998	35,567	134	1,387	167	239	2,535
137	55,266	2,653	21,878	27,936	90	627	86	199	1,797
138	48,015	3,930	23,042	18,326	86	875	125	121	1,510
139	44,994	3,128	16,032	24,552	84	272	13	76	837
140	55,269	3,152	30,239	19,007	140	452	19	222	2,038
141	59,926	2,112	35,718	17,760	100	2,239	7	194	1,796
142	51,695	2,277	12,720	34,598	89	557	8	197	1,249
143	52,996	2,281	15,297	32,995	90	513	25	211	1,584
144	53,320	1,875	34,833	14,105	99	534	29	120	1,725
145	51,457	1,455	27,185	20,645	76	616	27	203	1,250
146	66,372	3,571	38,641	17,954	112	2,685	43	300	3,066
147	56,551	5,366	26,688	19,750	143	1,599	39	299	2,667
148	52,451	1,977	30,171	18,102	51	507	25	152	1,466
149	47,480	3,460	27,884	14,878	67	172	9	83	927
150	54,582	1,557	31,255	19,612	113	491	16	147	1,391
151	49,836	2,072	18,851	27,287	93	416	18	93	1,006
152	57,139	1,516	38,907	13,754	111	943	17	158	1,733
153	48,129	1,657	12,727	31,933	64	445	11	130	1,162
154	50,683	1,197	16,995	30,888	70	233	7	116	1,177
155	54,138	3,843	32,973	15,085	103	561	3	131	1,439
156	52,840	5,228	33,655	12,151	76	327	10	124	1,269

157	51,816	4,598	32,003	13,274	74	330	19	155	1,363
158	56,467	3,266	32,360	18,881	106	374	18	155	1,307
159	57,616	1,981	38,210	14,716	154	348	20	192	1,995
160	62,546	3,404	41,805	13,613	148	989	58	179	2,350
161	78,057	6,318	45,919	18,684	201	2,575	71	420	3,869
162	56,360	7,363	16,720	28,267	90	1,476	134	273	2,037
163	54,042	2,767	23,081	23,827	134	2,412	58	218	1,545
164	71,134	8,192	36,759	19,118	210	2,593	156	415	3,691
165	55,158	3,759	21,594	25,964	109	1,524	84	223	1,901
166	60,603	2,499	49,675	3,863	91	1,846	32	247	2,350
167	54,640	4,290	35,631	10,923	164	804	115	247	2,466
168	55,676	5,929	19,578	24,987	163	1,077	370	276	3,296
169	54,859	7,020	32,641	13,167	70	338	18	113	1,492
170	53,411	4,745	33,800	12,490	84	482	16	148	1,646
171	53,890	3,792	27,515	20,962	106	304	15	111	1,085
172	53,511	8,834	27,920	14,837	114	441	11	130	1,224
173	55,516	4,651	29,143	19,448	153	432	19	162	1,508
174	54,844	5,589	34,683	11,802	212	409	25	168	1,956
175	59,296	2,884	37,755	15,550	159	906	22	189	1,831
176	57,405	5,032	35,806	13,368	169	602	65	217	2,146
177	54,089	3,617	16,289	31,342	105	622	41	223	1,850
178	53,906	2,410	45,140	4,213	127	226	4	123	1,663
179	56,638	4,248	32,847	16,740	105	578	65	231	1,824
180	57,987	3,570	39,712	10,378	180	948	65	291	2,843

¹American Indian and Alaska Native Alone, Not Latino

²Native Hawaiian and Pacific Islander Alone, Not Latino

Percent Change in Population from 2010 to 2020 by Race and Ethnicity at State House District Level

DISTRICT	Total Population	Hispanic or Latino Origin	White Alone, not Latino	African American Alone, not Latino	AIAN Alone, not Latino ¹	Asian Alone, not Latino	NHPI Alone, not Latino ²	Other Alone, not Latino	Two or More, not Latino
----------	------------------	---------------------------	-------------------------	------------------------------------	-------------------------------------	-------------------------	-------------------------------------	-------------------------	-------------------------

1	-1.61%	52.20%	-6.59%	17.45%	-12.79%	1.20%	50.00%	170.69%	225.74%
2	-0.48%	24.15%	-3.81%	-17.68%	14.56%	24.10%	-58.33%	284.85%	197.83%
3	6.75%	65.96%	0.47%	38.74%	-10.24%	33.61%	196.43%	165.00%	219.20%
4	1.35%	13.50%	-11.89%	3.49%	20.00%	15.62%	-22.22%	458.06%	122.82%
5	2.47%	14.70%	-3.98%	7.41%	-25.00%	37.60%	-67.39%	212.82%	230.47%
6	-0.99%	10.71%	-6.52%	-4.26%	-24.14%	-15.50%	-45.45%	90.00%	162.75%
7	9.30%	39.87%	4.26%	25.71%	4.76%	74.17%	-85.71%	308.57%	260.93%
8	11.17%	33.24%	7.24%	30.65%	-10.12%	6.32%	-73.33%	583.33%	274.66%
9	14.98%	53.68%	8.37%	54.48%	-10.37%	97.11%	0.00%	865.22%	269.48%
10	5.79%	25.67%	-0.40%	18.38%	-5.81%	8.72%	-34.78%	334.21%	212.39%
11	8.92%	34.32%	3.51%	-0.19%	30.97%	56.65%	-37.50%	356.52%	326.84%
12	-1.02%	32.81%	-6.88%	2.86%	-16.82%	0.51%	-82.35%	336.54%	178.06%
13	3.23%	24.63%	-3.65%	-0.71%	21.57%	6.19%	-71.05%	164.47%	155.81%
14	5.13%	40.86%	-0.92%	2.27%	-16.00%	65.36%	33.33%	340.00%	255.54%
15	11.36%	40.16%	1.57%	17.93%	-8.24%	65.35%	-33.33%	407.27%	211.59%
16	3.52%	15.26%	-0.50%	-2.46%	8.40%	-11.73%	16.67%	187.10%	191.21%
17	26.74%	78.26%	11.82%	65.35%	19.83%	76.67%	44.83%	379.52%	208.19%
18	6.94%	39.19%	2.13%	-0.13%	-4.38%	40.74%	333.33%	91.15%	139.69%
19	17.86%	71.40%	-2.96%	62.22%	12.41%	56.23%	217.65%	203.40%	193.09%
20	18.14%	57.36%	5.83%	45.22%	-17.29%	52.61%	27.78%	246.72%	208.15%
21	26.55%	77.14%	14.74%	37.47%	-4.41%	52.92%	52.63%	225.98%	267.58%
22	44.80%	59.84%	22.84%	108.91%	41.82%	446.86%	230.00%	343.96%	397.91%
23	27.63%	41.74%	15.92%	67.01%	-9.88%	104.02%	-56.41%	153.72%	286.47%
24	37.03%	42.81%	19.62%	129.88%	12.84%	223.55%	52.63%	255.00%	381.33%
25	45.35%	47.12%	-5.06%	80.13%	66.67%	274.63%	112.50%	338.46%	212.55%
26	30.88%	73.12%	14.88%	182.75%	0.81%	219.66%	38.89%	288.41%	367.82%
27	6.27%	35.41%	-2.81%	11.70%	-19.42%	20.14%	-24.00%	244.90%	236.39%
28	1.10%	31.77%	-4.04%	2.41%	19.83%	9.92%	37.50%	153.06%	201.66%
29	11.41%	5.62%	14.83%	4.61%	3.90%	18.74%	38.46%	201.27%	159.05%
30	14.58%	33.31%	2.59%	13.65%	-21.67%	36.53%	320.00%	157.83%	234.62%
31	27.82%	88.68%	18.04%	33.37%	29.89%	71.88%	170.00%	396.23%	260.34%

32	3.96%	25.80%	0.72%	-4.63%	5.48%	77.81%	25.00%	314.58%	188.89%
33	1.48%	37.44%	-2.52%	-7.32%	-23.53%	126.64%	66.67%	183.33%	279.51%
34	4.67%	19.04%	-6.43%	17.58%	-42.65%	16.25%	-36.00%	152.75%	135.09%
35	8.37%	36.92%	-4.97%	15.21%	28.83%	19.36%	5.88%	117.47%	149.70%
36	11.07%	77.59%	-3.34%	37.67%	-48.35%	50.08%	10.53%	402.25%	319.33%
37	10.37%	26.99%	-2.29%	10.27%	17.20%	27.14%	-48.72%	279.31%	164.02%
38	16.67%	70.47%	-19.28%	29.81%	13.22%	26.94%	380.00%	137.36%	113.06%
39	12.36%	31.18%	-25.36%	21.47%	5.88%	-11.31%	63.64%	159.06%	94.15%
40	16.96%	56.18%	-2.32%	35.34%	-10.26%	72.62%	6.67%	109.95%	162.93%
41	6.97%	23.40%	-12.57%	3.20%	-7.37%	6.31%	-26.47%	186.26%	87.84%
42	13.66%	1.82%	19.92%	6.83%	-12.21%	37.25%	30.00%	49.54%	140.55%
43	10.61%	47.89%	-3.76%	2.64%	21.11%	52.27%	5.26%	141.98%	175.70%
44	16.63%	52.08%	-0.91%	51.52%	16.67%	31.59%	106.67%	245.41%	207.84%
45	7.73%	54.55%	-4.02%	4.99%	-10.17%	70.90%	-45.83%	36.64%	177.91%
46	13.47%	46.56%	2.81%	29.34%	-8.05%	36.94%	100.00%	211.05%	181.46%
47	18.49%	47.14%	2.17%	25.19%	15.00%	86.00%	36.36%	106.70%	182.16%
48	3.68%	-14.48%	5.45%	3.81%	-38.24%	23.47%	-16.13%	116.51%	136.36%
49	13.51%	40.11%	-3.72%	16.22%	30.88%	63.44%	-29.63%	122.27%	135.43%
50	9.25%	40.99%	-14.71%	21.53%	6.12%	37.43%	100.00%	125.00%	89.86%
51	5.72%	33.30%	-6.03%	4.98%	-21.98%	48.29%	17.65%	21.38%	123.27%
52	15.31%	3.59%	8.20%	14.48%	14.81%	125.73%	47.06%	134.44%	187.89%
53	10.70%	-10.11%	13.29%	6.75%	31.94%	42.72%	169.23%	302.60%	177.90%
54	30.06%	11.24%	15.90%	81.22%	47.30%	91.53%	-11.11%	245.87%	213.78%
55	15.15%	95.21%	22.99%	5.76%	2.06%	35.54%	-50.00%	279.22%	120.89%
56	14.06%	84.83%	33.25%	-3.38%	10.53%	10.71%	221.43%	188.89%	110.53%
57	22.76%	56.72%	35.91%	2.11%	-37.01%	114.55%	-7.14%	319.77%	178.11%
58	22.38%	71.75%	36.64%	2.80%	2.54%	133.51%	53.85%	229.17%	152.62%
59	9.09%	5.58%	19.77%	-2.84%	7.89%	39.86%	40.00%	209.30%	159.60%
60	8.29%	4.21%	-17.65%	11.26%	-4.35%	-12.17%	-7.14%	303.95%	101.67%
61	9.42%	19.28%	-22.48%	14.65%	-13.51%	-2.10%	-33.33%	198.15%	102.23%
62	22.46%	54.95%	-26.47%	33.31%	-12.69%	-1.95%	-26.92%	266.67%	97.67%

63	9.83%	49.52%	-23.12%	16.88%	-12.88%	10.35%	-48.65%	430.00%	100.22%
64	19.59%	32.90%	-9.96%	28.51%	-7.14%	7.03%	50.00%	326.23%	114.41%
65	24.93%	24.57%	-16.89%	34.16%	3.74%	9.81%	25.00%	163.31%	113.68%
66	13.02%	62.82%	-24.59%	39.28%	14.40%	36.62%	42.86%	243.45%	134.92%
67	6.51%	71.37%	-13.43%	39.13%	5.00%	31.69%	-36.11%	311.58%	204.61%
68	10.23%	54.19%	0.98%	18.50%	8.22%	36.14%	-26.67%	187.72%	190.55%
69	1.78%	30.15%	-4.76%	13.57%	-4.72%	14.48%	12.50%	91.14%	177.45%
70	16.73%	34.93%	6.37%	25.45%	45.45%	82.99%	-28.57%	326.39%	162.71%
71	14.15%	35.48%	5.18%	20.58%	-1.41%	94.96%	61.90%	268.29%	195.60%
72	15.39%	41.37%	5.93%	34.85%	-19.61%	74.74%	-9.09%	262.77%	219.40%
73	10.56%	49.03%	-10.92%	42.69%	-9.45%	56.21%	-31.25%	205.32%	149.72%
74	11.36%	12.53%	-31.04%	17.77%	-4.69%	6.85%	43.75%	159.09%	50.52%
75	10.99%	23.48%	-34.03%	17.51%	-7.48%	0.26%	9.68%	275.76%	75.72%
76	13.12%	40.19%	-29.57%	18.90%	-8.42%	21.99%	18.18%	296.81%	126.36%
77	11.06%	20.08%	-33.57%	14.17%	28.18%	-6.93%	63.64%	346.07%	71.06%
78	19.41%	21.31%	-27.34%	36.00%	-7.09%	9.12%	-12.90%	194.85%	70.71%
79	13.21%	36.09%	-5.34%	2.66%	-57.66%	76.00%	29.41%	198.61%	137.46%
80	16.69%	-11.02%	11.20%	24.78%	-20.69%	90.07%	-12.90%	133.99%	188.93%
81	8.02%	7.48%	3.89%	11.67%	-2.97%	2.80%	-48.48%	229.73%	123.52%
82	12.17%	7.04%	0.59%	42.82%	-1.45%	14.52%	-30.00%	227.42%	137.38%
83	9.19%	72.71%	18.23%	-4.09%	6.52%	54.21%	70.00%	262.65%	186.75%
84	9.78%	86.02%	8.33%	0.60%	14.47%	44.38%	-5.56%	239.25%	184.76%
85	8.03%	49.87%	17.79%	-5.98%	-19.55%	29.06%	7.14%	97.09%	74.41%
86	9.01%	71.91%	3.26%	-2.39%	12.00%	90.96%	-66.67%	167.12%	99.36%
87	14.43%	57.15%	-8.12%	9.64%	11.40%	76.26%	-33.33%	116.76%	127.19%
88	8.07%	24.67%	-10.52%	7.31%	46.00%	14.66%	11.11%	162.84%	91.17%
89	9.35%	85.57%	33.02%	-10.76%	-5.56%	93.24%	63.64%	272.63%	167.56%
90	4.38%	89.28%	-24.96%	8.70%	-16.67%	20.11%	0.00%	240.78%	139.60%
91	17.22%	49.54%	-33.03%	33.28%	-11.00%	12.42%	114.29%	253.85%	138.42%
92	14.52%	1.75%	-22.66%	23.97%	-27.56%	9.53%	-29.55%	219.63%	141.18%
93	15.93%	61.86%	-29.46%	23.07%	8.65%	62.60%	17.39%	172.73%	85.45%

94	10.44%	59.99%	-23.91%	10.60%	-0.91%	61.90%	-32.14%	143.87%	99.12%
95	9.55%	16.38%	-2.11%	21.64%	12.79%	7.58%	-26.67%	161.94%	111.97%
96	16.97%	24.92%	-13.00%	33.32%	5.56%	16.94%	41.67%	249.18%	83.98%
97	26.05%	50.65%	-6.38%	61.91%	24.36%	73.56%	100.00%	242.06%	171.57%
98	29.43%	45.97%	3.67%	60.16%	25.37%	118.26%	-22.22%	135.33%	187.26%
99	6.44%	8.35%	-16.84%	4.41%	-17.39%	21.65%	-11.76%	282.11%	37.94%
100	15.57%	27.34%	-13.26%	6.49%	-18.18%	35.16%	-28.00%	78.17%	44.15%
101	14.59%	44.48%	-23.26%	35.51%	24.71%	44.80%	50.00%	165.75%	84.06%
102	12.37%	42.30%	-16.54%	35.01%	-30.33%	48.46%	63.16%	107.50%	101.01%
103	28.38%	69.12%	7.40%	68.02%	-6.19%	111.09%	166.67%	219.00%	258.76%
104	29.82%	70.48%	-2.64%	65.88%	2.30%	90.75%	-25.00%	291.67%	177.40%
105	28.98%	61.85%	-11.96%	65.88%	7.76%	57.59%	150.00%	92.28%	151.47%
106	14.76%	61.70%	-24.86%	49.25%	8.33%	88.81%	-8.33%	125.00%	137.12%
107	15.97%	49.92%	-21.39%	33.39%	-11.54%	47.67%	66.67%	160.38%	84.91%
108	15.83%	47.63%	-17.96%	36.13%	-15.75%	49.21%	-11.54%	208.06%	116.28%
109	13.44%	78.06%	-18.78%	56.21%	-22.00%	52.87%	-5.26%	240.68%	172.83%
110	7.90%	50.33%	-11.35%	29.65%	-24.41%	24.76%	155.56%	328.42%	161.58%
111	33.02%	62.29%	-18.45%	102.31%	-6.82%	43.52%	9.30%	238.46%	150.18%
112	10.11%	65.14%	2.06%	18.51%	-24.80%	-14.95%	46.15%	311.29%	197.85%
113	16.56%	41.46%	-20.17%	29.41%	56.58%	33.64%	333.33%	318.10%	122.75%
114	27.58%	115.06%	-1.23%	105.84%	11.11%	68.52%	166.67%	211.18%	251.63%
115	14.01%	71.32%	8.53%	9.43%	0.00%	39.17%	16.67%	327.78%	219.97%
116	15.87%	68.06%	4.04%	25.25%	-10.91%	35.43%	-64.29%	175.00%	171.18%
117	15.29%	31.80%	10.94%	6.77%	94.83%	30.35%	57.89%	252.75%	164.75%
118	6.61%	7.41%	5.41%	0.14%	98.51%	-1.14%	158.33%	398.15%	125.84%
119	20.33%	67.96%	15.83%	4.76%	62.50%	23.46%	-56.52%	194.02%	194.48%
120	5.37%	36.01%	5.59%	-7.82%	16.30%	74.81%	-50.00%	140.63%	157.47%
121	33.07%	107.82%	13.10%	47.19%	11.23%	114.56%	75.00%	372.86%	261.81%
122	28.79%	90.79%	14.12%	52.09%	-14.06%	55.71%	22.06%	326.26%	220.42%
123	-1.83%	51.67%	-10.85%	4.32%	-18.46%	10.39%	32.14%	183.87%	125.89%
124	-1.66%	27.82%	-11.08%	-2.58%	-20.13%	24.50%	53.85%	239.71%	101.12%

125	2.00%	40.51%	-17.64%	11.30%	4.44%	-8.90%	33.85%	197.53%	75.50%
126	3.54%	11.25%	2.09%	1.13%	-4.26%	-6.45%	-24.80%	230.00%	92.57%
127	7.73%	56.93%	-3.38%	4.61%	-8.39%	61.82%	-28.21%	136.84%	110.66%
128	-7.35%	-22.05%	-6.73%	-9.59%	13.75%	-17.51%	240.00%	51.22%	174.93%
129	4.99%	34.74%	3.56%	-2.68%	-16.67%	-19.16%	200.00%	359.57%	197.19%
130	10.80%	60.82%	0.17%	15.92%	20.41%	15.53%	4.35%	275.00%	180.22%
131	2.22%	31.14%	0.54%	-4.61%	-29.10%	43.90%	-40.00%	300.00%	166.47%
132	4.47%	16.20%	-2.41%	4.16%	-16.00%	66.41%	150.00%	250.00%	129.82%
133	6.49%	58.60%	-0.18%	5.93%	3.91%	49.38%	70.00%	209.72%	235.16%
134	12.47%	50.82%	-3.76%	43.81%	7.24%	44.13%	38.54%	155.03%	165.53%
135	-1.50%	17.39%	-4.34%	-7.07%	-32.21%	23.54%	34.65%	184.47%	82.97%
136	11.43%	29.26%	-14.83%	20.42%	-18.29%	22.42%	43.97%	88.19%	97.89%
137	3.50%	63.06%	1.47%	-2.19%	-36.17%	22.94%	32.31%	210.94%	106.55%
138	-10.80%	8.89%	-14.91%	-14.19%	-57.21%	19.70%	48.81%	290.32%	105.72%
139	-16.05%	9.64%	-17.97%	-18.84%	10.53%	-30.08%	-43.48%	261.90%	92.86%
140	2.21%	28.44%	-6.65%	8.03%	-15.15%	-17.22%	5.56%	212.68%	145.25%
141	10.29%	65.78%	-4.01%	34.29%	-11.50%	31.24%	-61.11%	133.73%	155.11%
142	-3.36%	50.10%	-18.91%	-1.48%	2.30%	27.17%	-61.90%	245.61%	119.51%
143	-1.76%	51.86%	-15.34%	-0.45%	-5.26%	23.61%	19.05%	210.29%	151.03%
144	-0.04%	36.26%	-3.24%	-5.03%	-12.39%	36.22%	16.00%	87.50%	231.09%
145	-3.79%	16.31%	-8.19%	-3.02%	-24.75%	3.18%	12.50%	232.79%	126.04%
146	23.66%	60.28%	9.50%	36.42%	-1.75%	66.25%	34.38%	261.45%	167.07%
147	6.03%	24.47%	-13.82%	30.14%	-20.11%	28.74%	-25.00%	264.63%	101.28%
148	-1.76%	7.97%	-4.49%	-4.36%	-45.74%	28.35%	150.00%	181.48%	196.76%
149	-11.44%	-6.23%	-13.55%	-12.07%	-2.90%	-27.73%	28.57%	315.00%	125.55%
150	0.82%	24.86%	-5.47%	4.98%	29.89%	1.87%	300.00%	332.35%	158.55%
151	-7.84%	-13.45%	-12.19%	-7.45%	3.33%	87.39%	200.00%	220.69%	162.66%
152	5.83%	33.92%	0.71%	7.62%	-5.13%	32.07%	-26.09%	327.03%	211.69%
153	-11.06%	4.87%	-27.00%	-5.55%	-49.61%	-9.92%	-75.56%	176.60%	100.34%
154	-6.08%	38.86%	-10.81%	-6.91%	-14.63%	-11.74%	0.00%	169.77%	148.31%
155	0.18%	35.75%	-5.82%	-0.59%	15.73%	31.38%	0.00%	104.69%	225.57%

156	-1.49%	5.21%	-5.48%	0.21%	7.04%	7.21%	-60.00%	129.63%	162.73%
157	-4.63%	-5.91%	-5.39%	-9.09%	-30.19%	25.95%	46.15%	453.57%	124.92%
158	4.83%	10.75%	2.66%	2.50%	10.42%	12.31%	-5.26%	150.00%	182.90%
159	7.97%	90.85%	6.68%	-4.01%	21.26%	-3.87%	42.86%	405.26%	213.19%
160	17.34%	80.39%	7.92%	24.79%	12.12%	31.17%	34.88%	96.70%	212.50%
161	44.70%	141.42%	17.47%	89.88%	81.08%	120.09%	121.88%	342.11%	292.00%
162	5.22%	35.32%	-7.65%	3.20%	-40.00%	22.49%	39.58%	148.18%	91.27%
163	0.98%	57.39%	5.29%	-14.57%	22.94%	150.99%	107.14%	172.50%	100.13%
164	32.13%	85.13%	11.58%	45.85%	5.53%	79.57%	30.00%	192.25%	154.03%
165	1.48%	85.36%	10.34%	-15.51%	-9.92%	66.01%	211.11%	165.48%	117.51%
166	12.15%	73.18%	7.82%	-8.39%	-8.08%	29.36%	88.24%	233.78%	241.07%
167	0.59%	28.64%	-4.55%	-8.07%	-0.61%	47.79%	61.97%	268.66%	166.02%
168	3.04%	21.47%	-10.59%	5.22%	-17.26%	2.47%	25.85%	112.31%	79.62%
169	1.68%	24.38%	-6.68%	7.32%	-26.32%	-4.25%	-5.26%	145.65%	171.27%
170	0.21%	26.80%	-7.32%	4.20%	-20.75%	10.80%	33.33%	348.48%	217.76%
171	-0.56%	10.10%	-4.84%	0.11%	-6.19%	8.57%	200.00%	131.25%	141.65%
172	0.41%	13.69%	-4.09%	-3.48%	-17.99%	20.82%	-15.38%	165.31%	156.60%
173	1.95%	26.56%	-2.66%	-1.42%	-40.47%	44.97%	46.15%	125.00%	220.17%
174	1.45%	56.03%	-4.55%	-6.21%	-9.01%	34.10%	-48.98%	130.14%	117.82%
175	10.58%	43.70%	4.40%	10.84%	7.43%	40.68%	-4.35%	256.60%	230.51%
176	5.93%	21.87%	0.08%	4.86%	-9.63%	37.44%	91.18%	334.00%	158.24%
177	-0.01%	57.40%	-21.35%	7.26%	-11.02%	-11.02%	-14.58%	29.65%	123.70%
178	0.83%	0.33%	-0.87%	-5.60%	-30.60%	11.33%	-78.95%	324.14%	164.39%
179	4.69%	11.91%	4.35%	-3.33%	1.94%	14.46%	10.17%	168.60%	140.63%
180	8.75%	42.57%	3.69%	2.12%	-24.37%	16.89%	30.00%	304.17%	140.12%

¹American Indian and Alaska Native Alone, Not Latino

²Native Hawaiian and Pacific Islander Alone, Not Latino

Variable definitions

District shapefiles were retrieved from the Redistricting Data Hub, All About Redistricting, and the U.S. Census.

The list of variables below can be found in the P1 and P2 table of the PL 94-171. Data was retrieved from the Redistricting Data Hub processed legacy file of the PL 94-171.

Variable Name in Report	Census Variable Reference
Total Population	P0010001
Hispanic or Latino Origin	P0020002
White Alone, not Latino	P0020005
African American Alone, not Latino	P0020006
American Indian and Alaska Native Alone, not Latino	P0020007
Asian Alone, not Latino	P0020008
Native Hawaiian and Pacific Islander Alone, not Latino	P0020009
Other Alone, not Latino	P0020010
Two or More, not Latino	P0020011