

HAYSTAQ DNA

West Virginia

Overview	2
Congressional	2
Total Population	3
Population by Race and Ethnicity	4
State Senate	7
Total Population	8
Population by Race and Ethnicity	10
House of Delegates	15
Total Population	16
Population by Race and Ethnicity	19
Beckley	22
Charleston	26
Huntington	30
Martinsburg	34
Parkersburg	38
Weirton and Wheeling	43
Variable Definitions	53

Overview

West Virginia lost 59,295 people from their population over the last decade, experiencing a decrease of 3.20% and will, therefore, lose one congressional seat. West Virginia saw a majority of its population decline along its southern region, including its largest cities Beckley and Charleston. However, the state experienced increases around the smaller Morgantown and Martinsburg metropolitan areas, so West Virginia partially aligns with the general national trend of movement from rural to urban/suburban areas.

The White population declined by 7.38% over the decade in accordance with its national patterns of decline. The White population declined in all areas except for Martinsburg and Morgantown, in which the population remained stagnant or grew slightly (i.e. House District 46). The overall *share* of the population decreased to 89.13% from 93.16% in the 2010 Census.

Over the decade, the 4.22% growth of the African American population was relatively more concentrated in the northwestern part of the state, with declines across the south. The *overall share* of the population for African Americans increased to 3.61% from 3.35% in the 2010 Census.

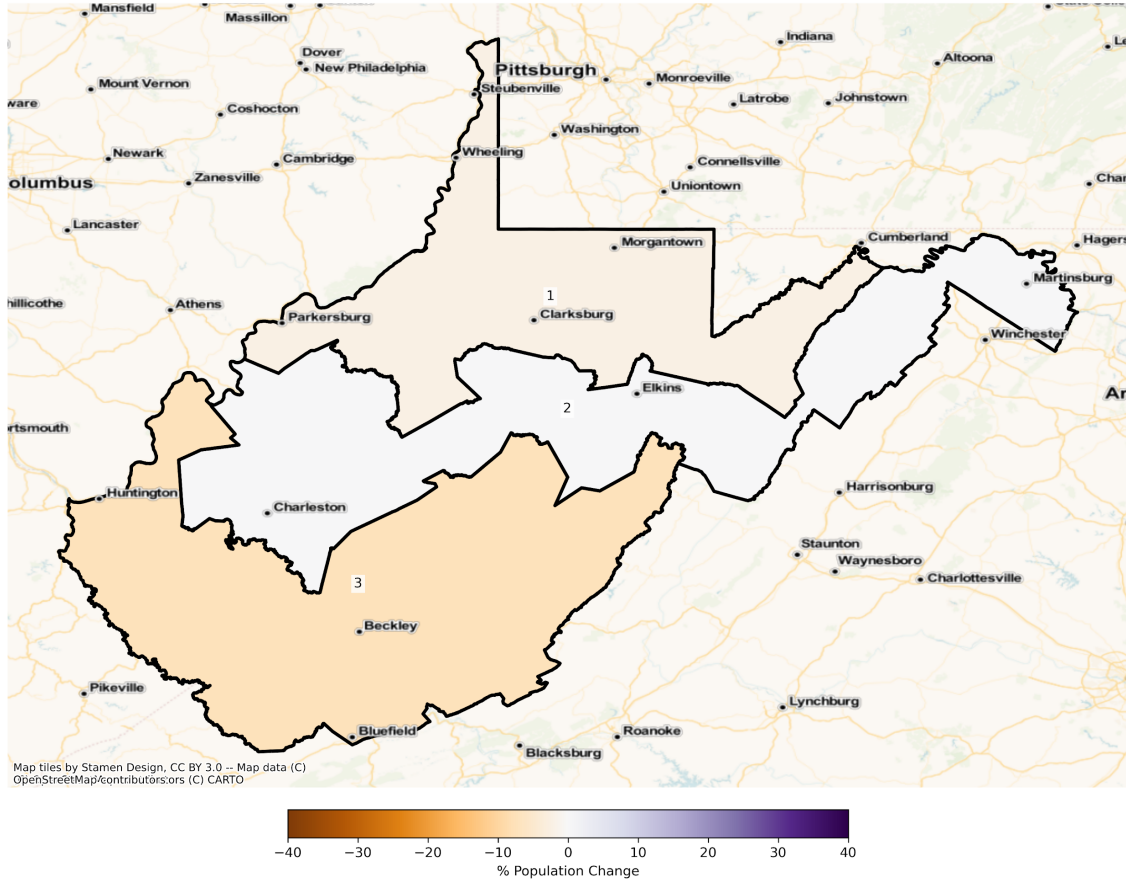
The Latino population grew by 56.41% over the decade, though increases were concentrated slightly more to the northeast and the southwestern border of the state. The *overall share* of the population of Latinos is now 1.94% compared to 1.20% in the 2010 Census.

Congressional

The charts below display the percent change in population from 2010 to 2020 for the listed group. Please note that the color bars are fixed to be from -40% to 40% and these maps are displayed in brown to purple. If the percent change in population was outside of this range, the color scheme changes to red to green to indicate a change.

Total Population

WV Congressional Districts
Population % Change from 2010 to 2020
Total Population

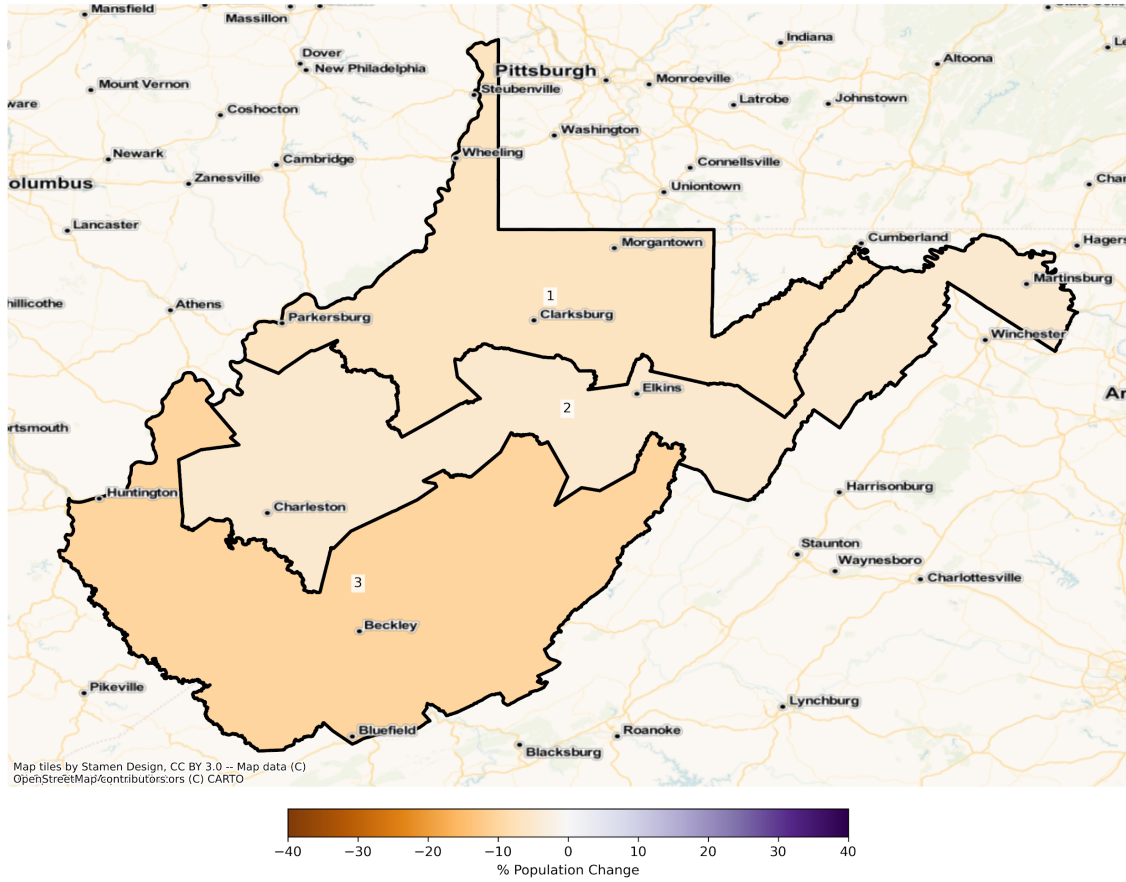


Total Population from 2010 to 2020 at the Congressional District Level

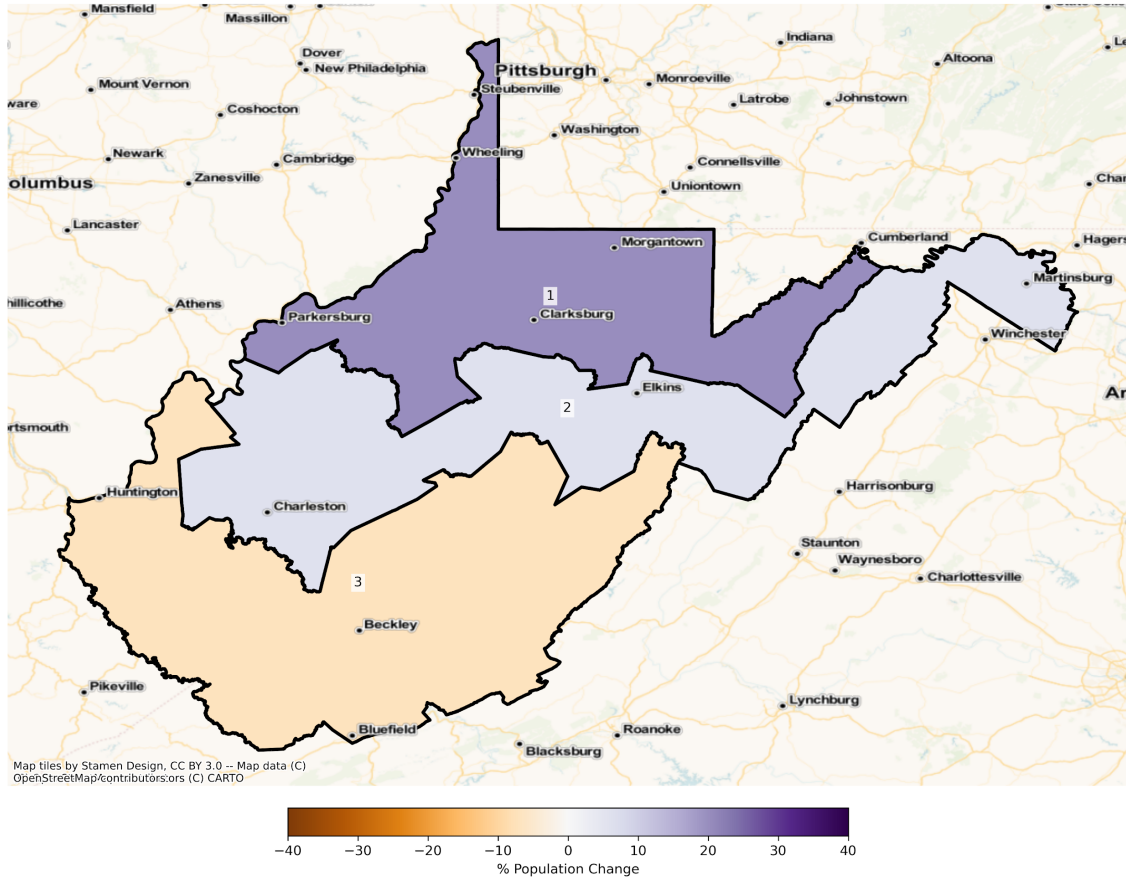
DISTRICT	Total Population 2010	Total Population 2020	Total Population % Change
1	615953	601957	-2.27%
2	620771	621032	0.04%
3	615545	569985	-7.40%

Population by Race and Ethnicity

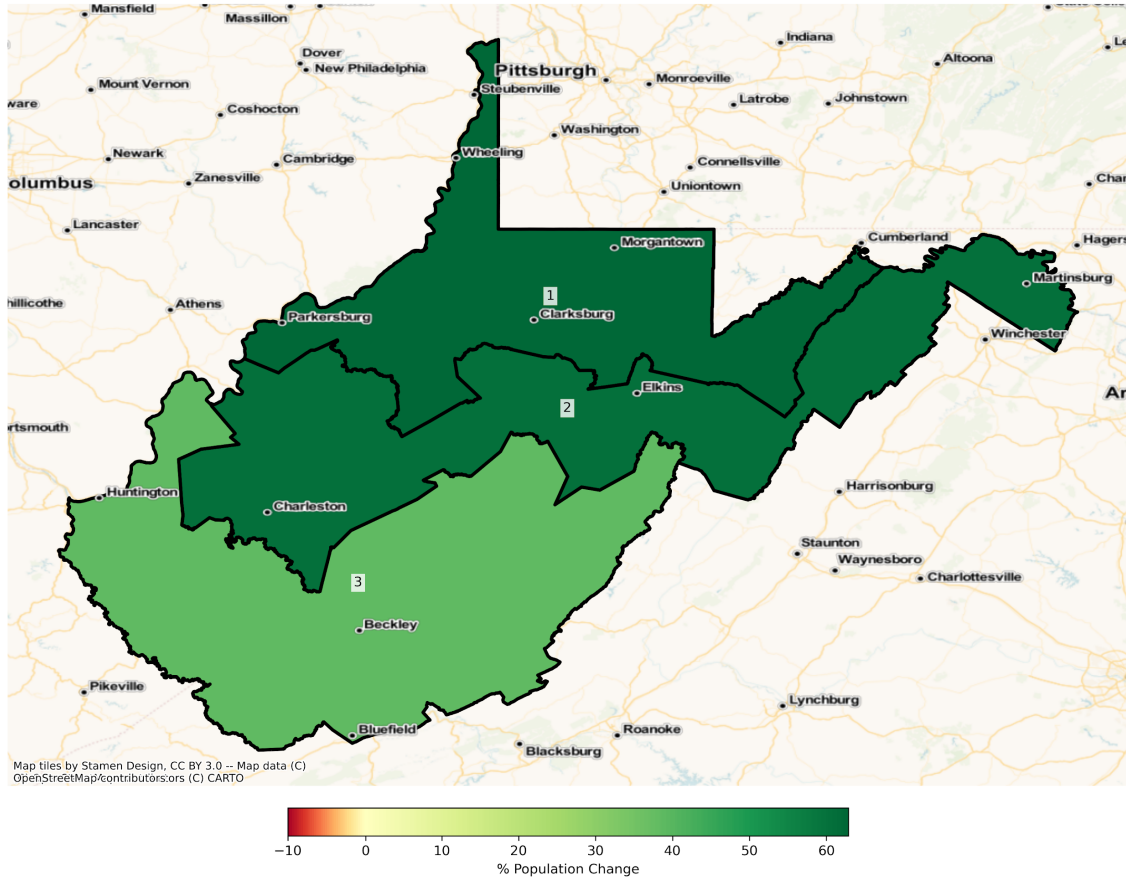
WV Congressional Districts
Population % Change from 2010 to 2020
Ethnicity: Not Latino White alone



WV Congressional Districts
Population % Change from 2010 to 2020
Ethnicity: Not Latino African American alone



WV Congressional Districts
 Population % Change from 2010 to 2020
 Ethnicity: Hispanic or Latino



2010 Population by Race and Ethnicity at the Congressional District Level

DISTRICT	Total Population	Hispanic or Latino Origin	White Alone, not Latino	African American Alone, not Latino	AIAN Alone, not Latino ¹	Asian Alone, not Latino	NHPI Alone, not Latino ²	Other Alone, not Latino	Two or More, not Latino
1	615953	6545	582130	12862	1048	5051	137	398	7782
2	620771	10737	567215	26643	1293	4523	161	494	9705
3	615545	4979	576201	22613	1152	2710	88	300	7502

¹American Indian and Alaska Native Alone, not Latino

²Native Hawaiian and Pacific Islander Alone, not Latino

2020 Population by Race and Ethnicity at the Congressional District Level

DISTRICT	Total Population	Hispanic or Latino Origin	White Alone, not Latino	African American Alone, not Latino	AIAN Alone, not Latino ¹	Asian Alone, not Latino	NHPI Alone, not Latino ²	Other Alone, not Latino	Two or More, not Latino
1	601957	10659	542360	15438	990	6101	204	1407	24798
2	621032	17257	538926	28246	1154	5590	145	2104	27610
3	569985	6903	516857	21054	1041	3210	80	1137	19703

¹American Indian and Alaska Native Alone, not Latino

²Native Hawaiian and Pacific Islander Alone, not Latino

Percent Change of Population from 2010 to 2020 by Race and Ethnicity at Congressional District Level

DISTRICT	Total Population	Hispanic or Latino Origin	White Alone, not Latino	African American Alone, not Latino	AIAN Alone, not Latino ¹	Asian Alone, not Latino	NHPI Alone, not Latino ²	Other Alone, not Latino	Two or More, not Latino
1	-2.27%	62.86%	-6.83%	20.03%	-5.53%	20.79%	48.91%	253.52%	218.66%
2	0.04%	60.72%	-4.99%	6.02%	-10.75%	23.59%	-9.94%	325.91%	184.49%
3	-7.40%	38.64%	-10.30%	-6.89%	-9.64%	18.45%	-9.09%	279.00%	162.64%

¹American Indian and Alaska Native Alone, not Latino

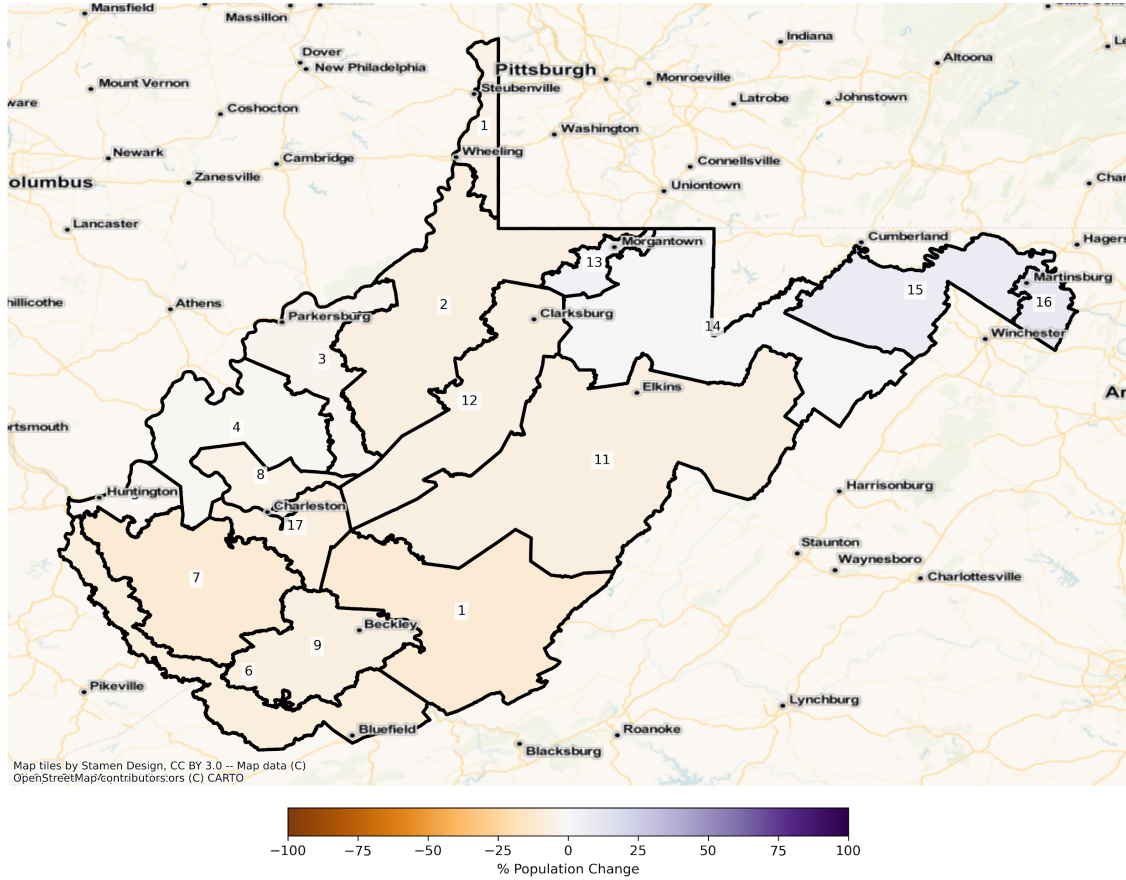
²Native Hawaiian and Pacific Islander Alone, not Latino

State Senate

The charts below display the percent change in population from 2010 to 2020 for the listed group. Please note that the color bars are fixed to be from -100% to 100% and these maps are displayed in brown to purple. If the percent change in population was outside of this range, the color scheme changes to red to green to indicate a change.

Total Population

WV State Senate Districts
Population % Change from 2010 to 2020
Total Population

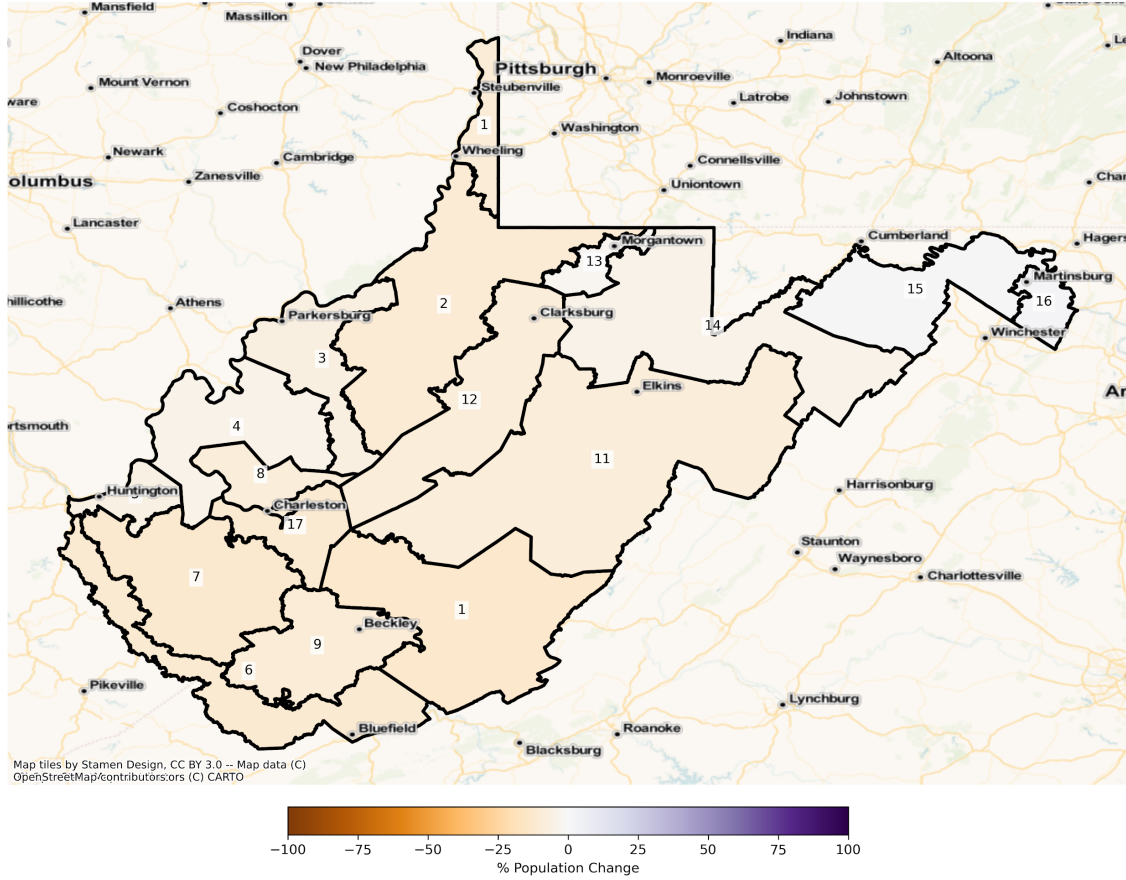


Total Population from 2010 to 2020 at the State Senate District Level

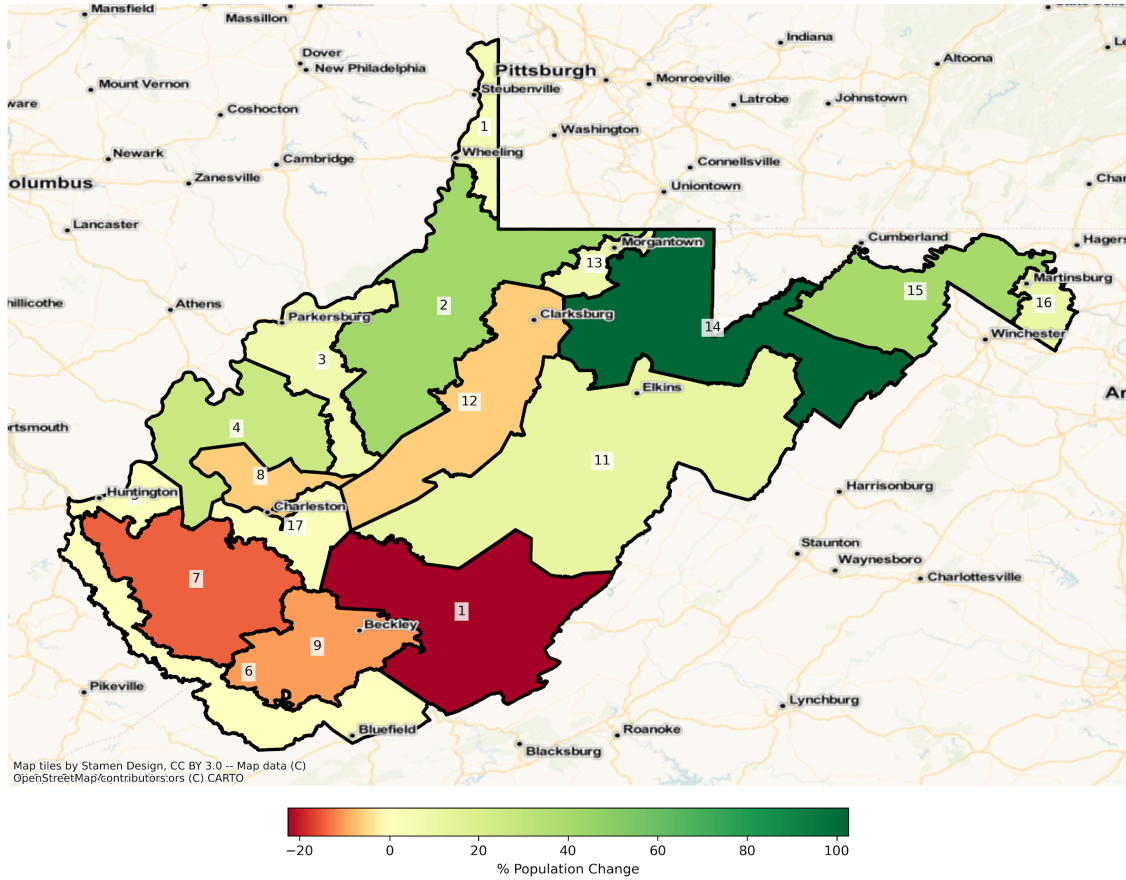
DISTRICT	Total Population 2010	Total Population 2020	Total Population % Change
1	103564	98109	-5.27%
2	110860	103367	-6.76%
3	105911	102555	-3.17%
4	104172	103107	-1.02%
5	112777	110412	-2.10%
6	113213	104347	-7.83%
7	104301	93532	-10.32%
8	104478	98930	-5.31%
9	104914	97608	-6.96%
10	108914	97799	-10.21%
11	114156	106847	-6.40%
12	113929	107147	-5.95%
13	113569	118572	4.41%
14	113871	114778	0.80%
15	114386	123255	7.75%
16	103515	114569	10.68%
17	105739	98040	-7.28%

Population by Race and Ethnicity

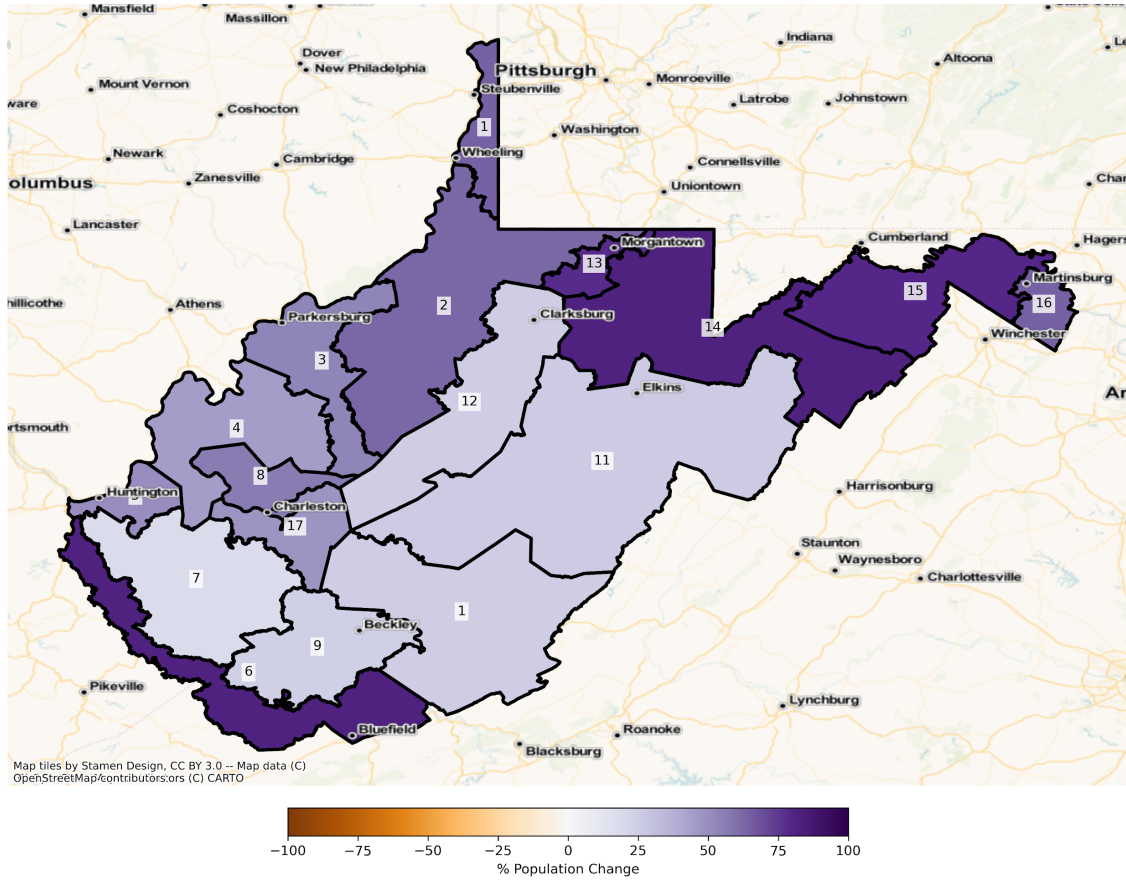
WV State Senate Districts
Population % Change from 2010 to 2020
Ethnicity: Not Latino White alone



WV State Senate Districts
 Population % Change from 2010 to 2020
 Ethnicity: Not Latino African American alone



WV State Senate Districts
Population % Change from 2010 to 2020
Ethnicity: Hispanic or Latino



2010 Population by Race and Ethnicity at the State Senate District Level

DISTRICT	Total Population	Hispanic or Latino Origin	White Alone, not Latino	African American Alone, not Latino	AIAN Alone, not Latino ¹	Asian Alone, not Latino	NHPI Alone, not Latino ²	Other Alone, not Latino	Two or More, not Latino
1	103564	855	97803	2621	112	583	16	84	1490
2	110860	745	107732	738	173	520	7	33	912
3	105911	859	101862	1049	218	494	29	78	1322
4	104172	765	100926	679	160	567	34	49	992
5	112777	1168	103609	4763	250	962	23	82	1920
6	113213	687	104492	6092	208	383	2	49	1300
7	104301	539	101805	955	124	183	2	23	670
8	104478	989	90278	9961	258	758	35	133	2066
9	104914	1108	94517	6714	214	741	25	68	1527
10	108914	1096	102008	3804	243	274	16	61	1412
11	114156	876	110914	811	214	297	11	32	1001
12	113929	1549	107982	2262	237	426	32	50	1391
13	113569	1913	101981	4736	178	2732	46	112	1871
14	113871	1222	108902	1777	253	458	15	54	1190
15	114386	2105	107605	2276	249	581	30	71	1469
16	103515	4864	85728	8828	223	1061	49	133	2629
17	105739	921	97402	4052	179	1264	14	80	1827

¹American Indian and Alaska Native Alone, not Latino

²Native Hawaiian and Pacific Islander Alone, not Latino

2020 Population by Race and Ethnicity at the State Senate District Level

DISTRICT	Total Population	Hispanic or Latino Origin	White Alone, not Latino	African American Alone, not Latino	AIAN Alone, not Latino ¹	Asian Alone, not Latino	NHPI Alone, not Latino ²	Other Alone, not Latino	Two or More, not Latino
1	98109	1408	88540	2751	145	571	30	303	4361
2	103367	1215	96686	1050	139	694	16	159	3408
3	102555	1321	95040	1127	189	594	21	227	4036
4	103107	1110	96710	859	137	732	14	213	3332
5	110412	1757	97220	4860	219	1375	24	324	4633
6	104347	1254	92564	6085	207	354	12	213	3658
7	93532	639	89174	818	124	150	7	100	2520
8	98930	1549	81948	9349	230	737	24	381	4712
9	97608	1379	85461	6036	164	831	17	181	3539
10	97799	1375	89063	2945	214	341	6	252	3603
11	106847	1102	100966	908	197	289	17	186	3182
12	107147	1944	98026	2126	203	606	46	192	4004
13	118572	3410	99863	5142	218	3304	98	394	6143
14	114778	2226	103969	3600	175	414	16	167	4211
15	123255	3786	109261	3203	215	926	33	381	5450
16	114569	7982	87550	9707	250	1547	25	593	6915
17	98040	1362	86102	4172	159	1436	23	382	4404

¹American Indian and Alaska Native Alone, not Latino

²Native Hawaiian and Pacific Islander Alone, not Latino

Percent Change of Population from 2010 to 2020 by Race and Ethnicity at State Senate District Level

DISTRICT	Total Population	Hispanic or Latino Origin	White Alone, not Latino	African American Alone, not Latino	AIAN Alone, not Latino ¹	Asian Alone, not Latino	NHPI Alone, not Latino ²	Other Alone, not Latino	Two or More, not Latino
1	-5.27%	64.68%	-9.47%	4.96%	29.46%	-2.06%	87.50%	260.71%	192.68%
2	-6.76%	63.09%	-10.25%	42.28%	-19.65%	33.46%	128.57%	381.82%	273.68%
3	-3.17%	53.78%	-6.70%	7.44%	-13.30%	20.24%	-27.59%	191.03%	205.30%
4	-1.02%	45.10%	-4.18%	26.51%	-14.38%	29.10%	-58.82%	334.69%	235.89%
5	-2.10%	50.43%	-6.17%	2.04%	-12.40%	42.93%	4.35%	295.12%	141.30%
6	-7.83%	82.53%	-11.42%	-0.11%	-0.48%	-7.57%	500.00%	334.69%	181.38%
7	-10.32%	18.55%	-12.41%	-14.35%	0.00%	-18.03%	250.00%	334.78%	276.12%
8	-5.31%	56.62%	-9.23%	-6.14%	-10.85%	-2.77%	-31.43%	186.47%	128.07%
9	-6.96%	24.46%	-9.58%	-10.10%	-23.36%	12.15%	-32.00%	166.18%	131.76%
10	-10.21%	25.46%	-12.69%	-22.58%	-11.93%	24.45%	-62.50%	313.11%	155.17%
11	-6.40%	25.80%	-8.97%	11.96%	-7.94%	-2.69%	54.55%	481.25%	217.88%
12	-5.95%	25.50%	-9.22%	-6.01%	-14.35%	42.25%	43.75%	284.00%	187.85%
13	4.41%	78.25%	-2.08%	8.57%	22.47%	20.94%	113.04%	251.79%	228.33%
14	0.80%	82.16%	-4.53%	102.59%	-30.83%	-9.61%	6.67%	209.26%	253.87%
15	7.75%	79.86%	1.54%	40.73%	-13.65%	59.38%	10.00%	436.62%	271.00%
16	10.68%	64.10%	2.13%	9.96%	12.11%	45.81%	-48.98%	345.86%	163.03%
17	-7.28%	47.88%	-11.60%	2.96%	-11.17%	13.61%	64.29%	377.50%	141.05%

¹American Indian and Alaska Native Alone, not Latino

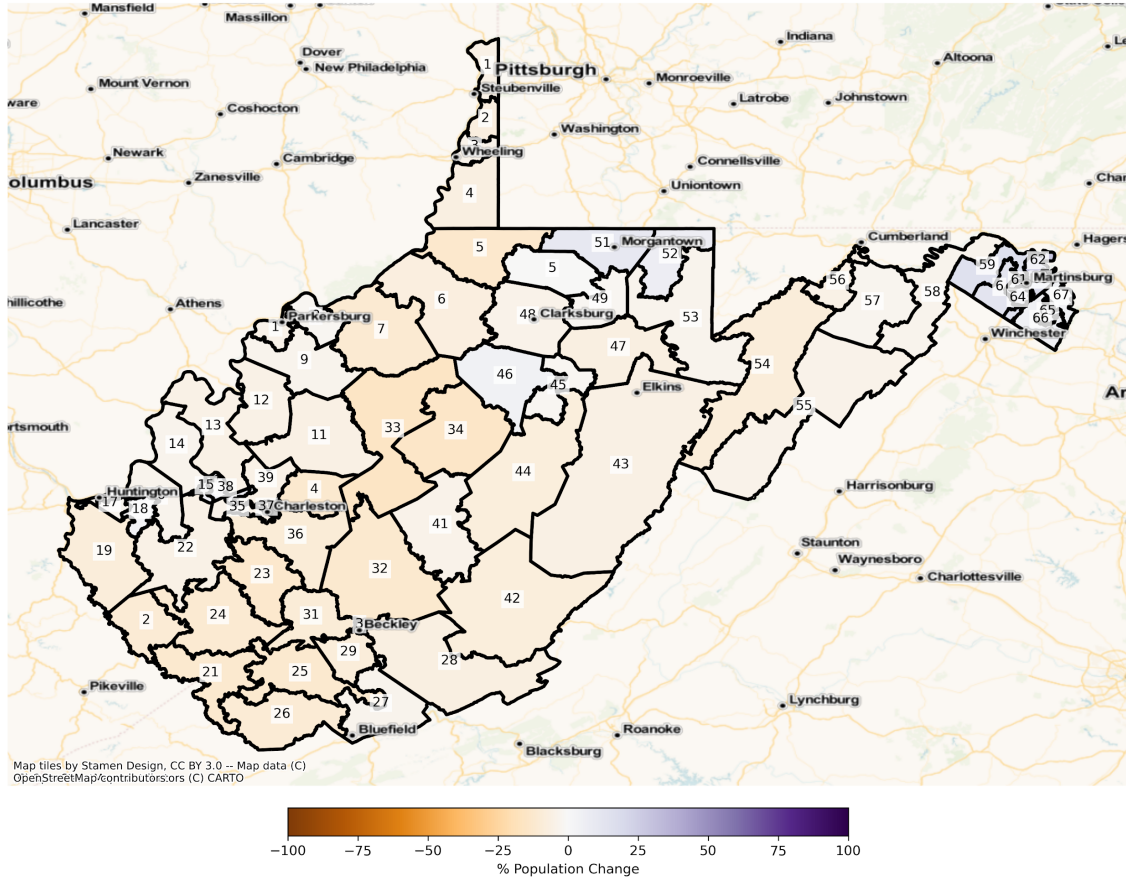
²Native Hawaiian and Pacific Islander Alone, not Latino

House of Delegates

The charts below display the percent change in population from 2010 to 2020 for the listed group. Please note that the color bars are fixed to be from -100% to 100% and these maps are displayed in brown to purple. If the percent change in population was outside of this range, the color scheme changes to red to green to indicate a change.

Total Population

WV State House Districts
Population % Change from 2010 to 2020
Total Population



Total Population from 2010 to 2020 at the House of Delegates District Level

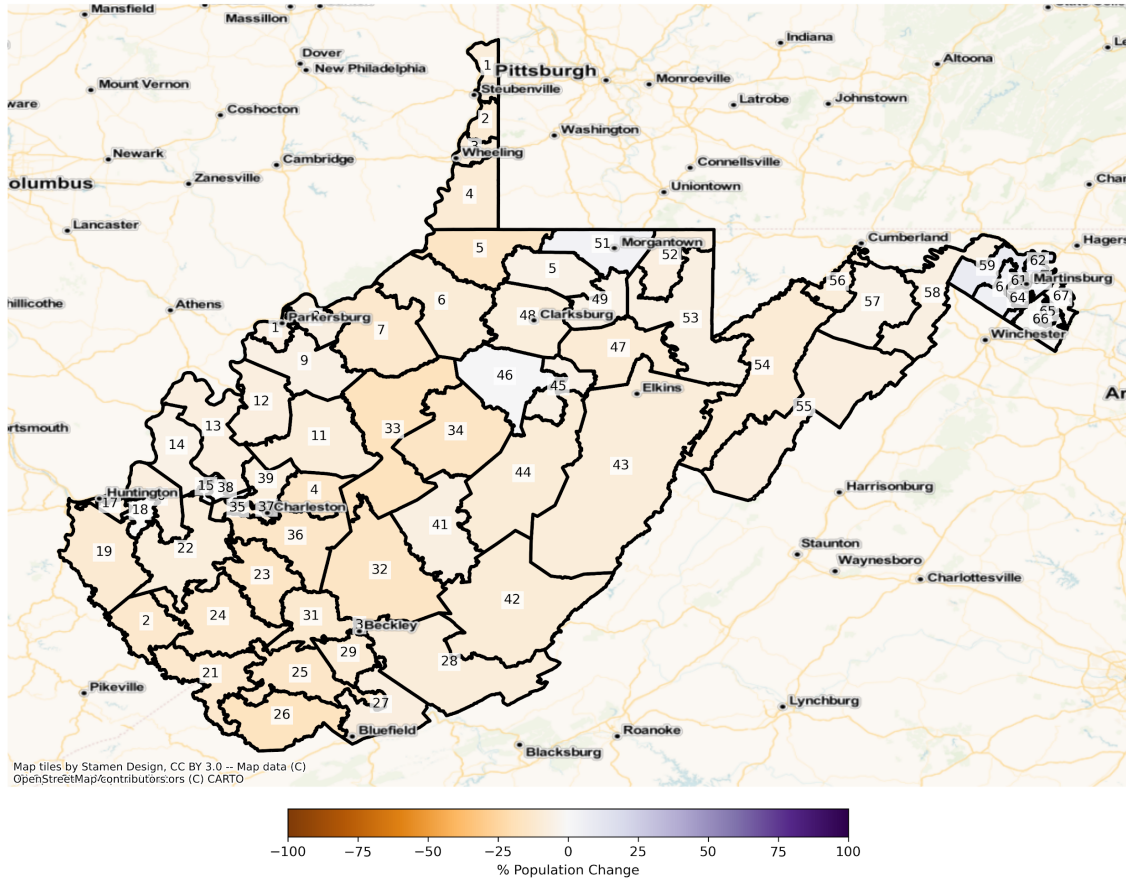
DISTRICT	Total Population 2010	Total Population 2020	Total Population % Change
1	37596	35660	-5.15%
2	19295	17857	-7.45%
3	38904	37152	-4.50%
4	36500	34001	-6.85%
5	17613	15391	-12.62%
6	17751	16474	-7.19%
7	17650	15694	-11.08%
8	18733	18343	-2.08%

9	18297	17680	-3.37%
10	55703	53517	-3.92%
11	18405	17344	-5.76%
12	17825	16864	-5.39%
13	37277	35421	-4.98%
14	17671	17069	-3.41%
15	18340	19483	6.23%
16	52730	51063	-3.16%
17	35218	34188	-2.92%
18	17626	18148	2.96%
19	36810	33496	-9.00%
20	17294	15420	-10.84%
21	19160	16861	-12.00%
22	35063	33288	-5.06%
23	17873	15610	-12.66%
24	35516	31386	-11.63%
25	19118	16748	-12.40%
26	18576	16594	-10.67%
27	58254	56235	-3.47%
28	38885	36234	-6.82%
29	19432	17649	-9.18%
30	19373	19161	-1.09%
31	19525	17647	-9.62%
32	57594	50804	-11.79%
33	19328	16416	-15.07%
34	19450	16563	-14.84%
35	70497	67508	-4.24%
36	52987	47776	-9.83%
37	18010	16782	-6.82%
38	19438	20703	6.51%
39	19388	18445	-4.86%

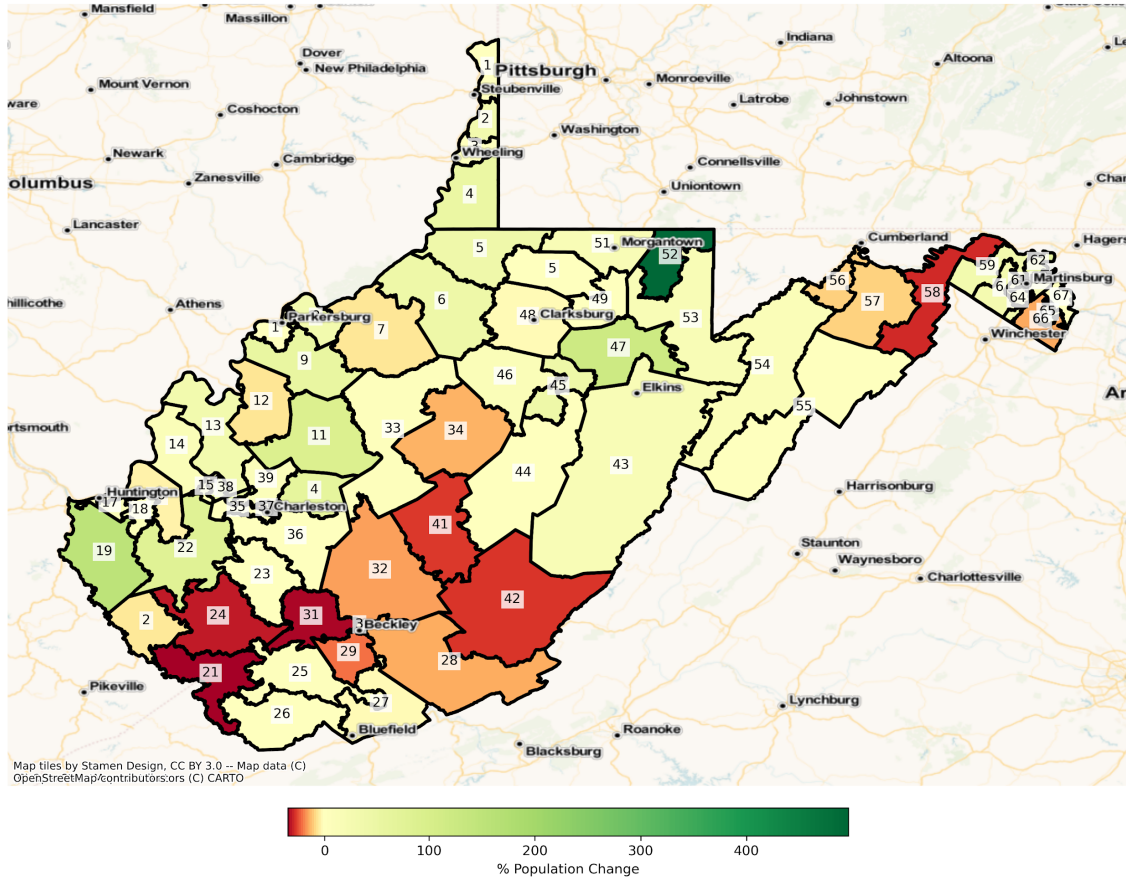
40	19472	17127	-12.04%
41	18808	17994	-4.33%
42	38859	35703	-8.12%
43	37837	35555	-6.03%
44	19121	17527	-8.34%
45	19266	18848	-2.17%
46	18466	19302	4.53%
47	19276	17963	-6.81%
48	70422	67429	-4.25%
49	18643	18306	-1.81%
50	55378	55144	-0.42%
51	93122	102806	10.40%
52	19110	20314	6.30%
53	18858	18145	-3.78%
54	19348	17615	-8.96%
55	19413	18603	-4.17%
56	19379	18430	-4.90%
57	19420	18952	-2.41%
58	19150	18413	-3.85%
59	19060	21931	15.06%
60	19450	21885	12.52%
61	18433	19818	7.51%
62	17796	22889	28.62%
63	17636	20723	17.50%
64	18344	21088	14.96%
65	18261	20961	14.79%
66	17646	18489	4.78%
67	17590	18339	4.26%

Population by Race and Ethnicity

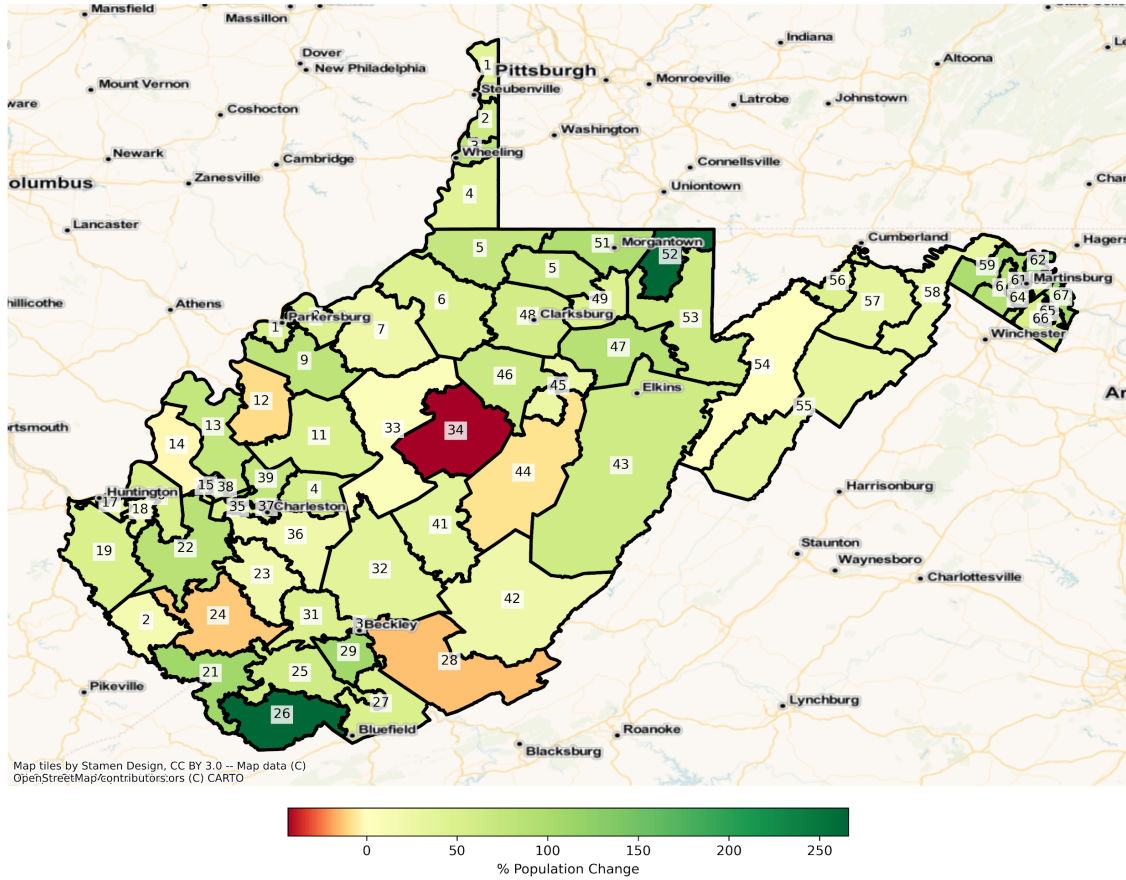
WV State House Districts
Population % Change from 2010 to 2020
Ethnicity: Not Latino White alone



WV State House Districts
 Population % Change from 2010 to 2020
 Ethnicity: Not Latino African American alone

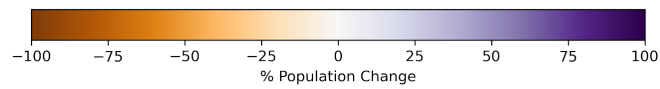
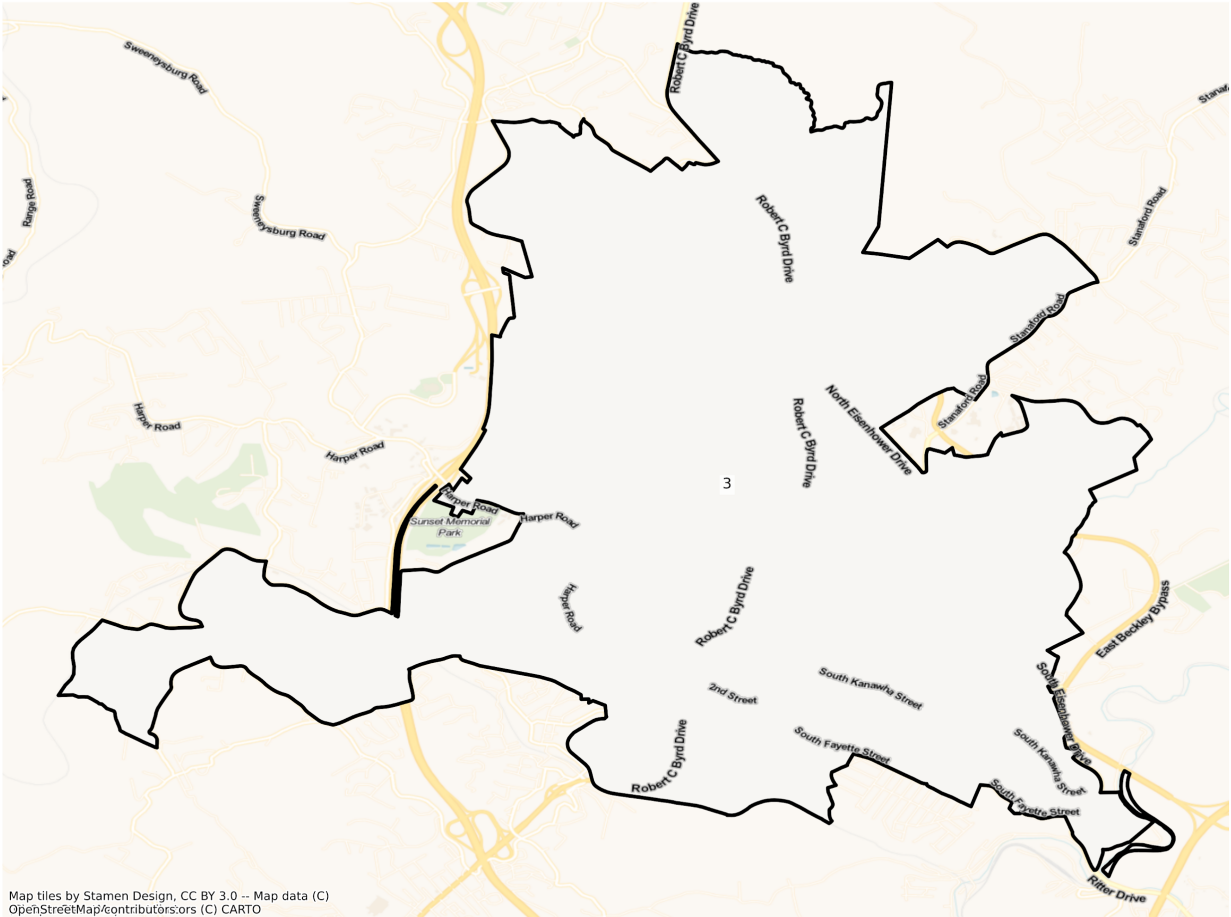


WV State House Districts
 Population % Change from 2010 to 2020
 Ethnicity: Hispanic or Latino

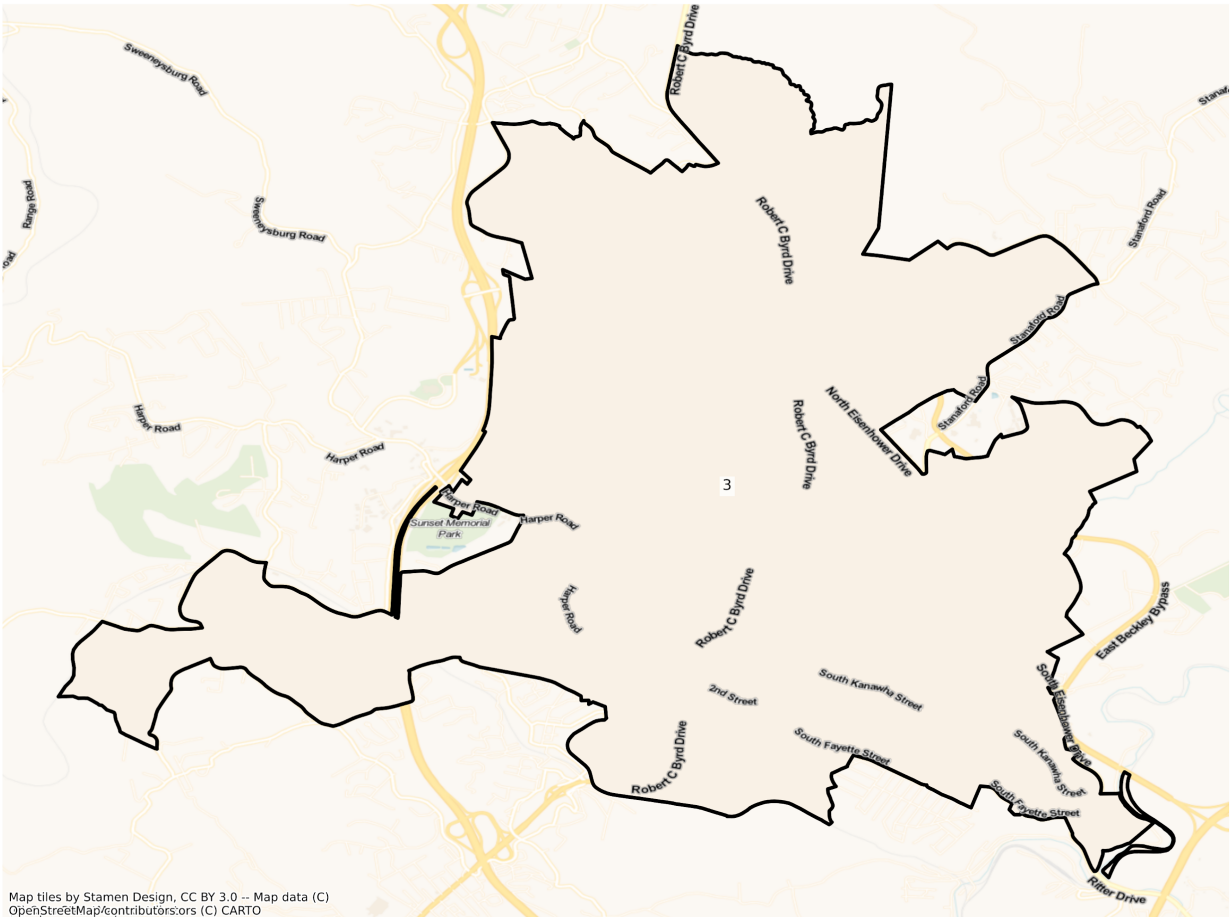


Beckley

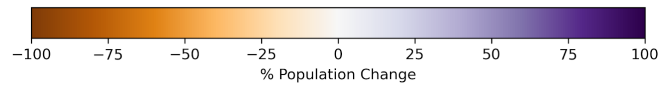
WV Beckley State House Districts
Population % Change from 2010 to 2020
Total Population



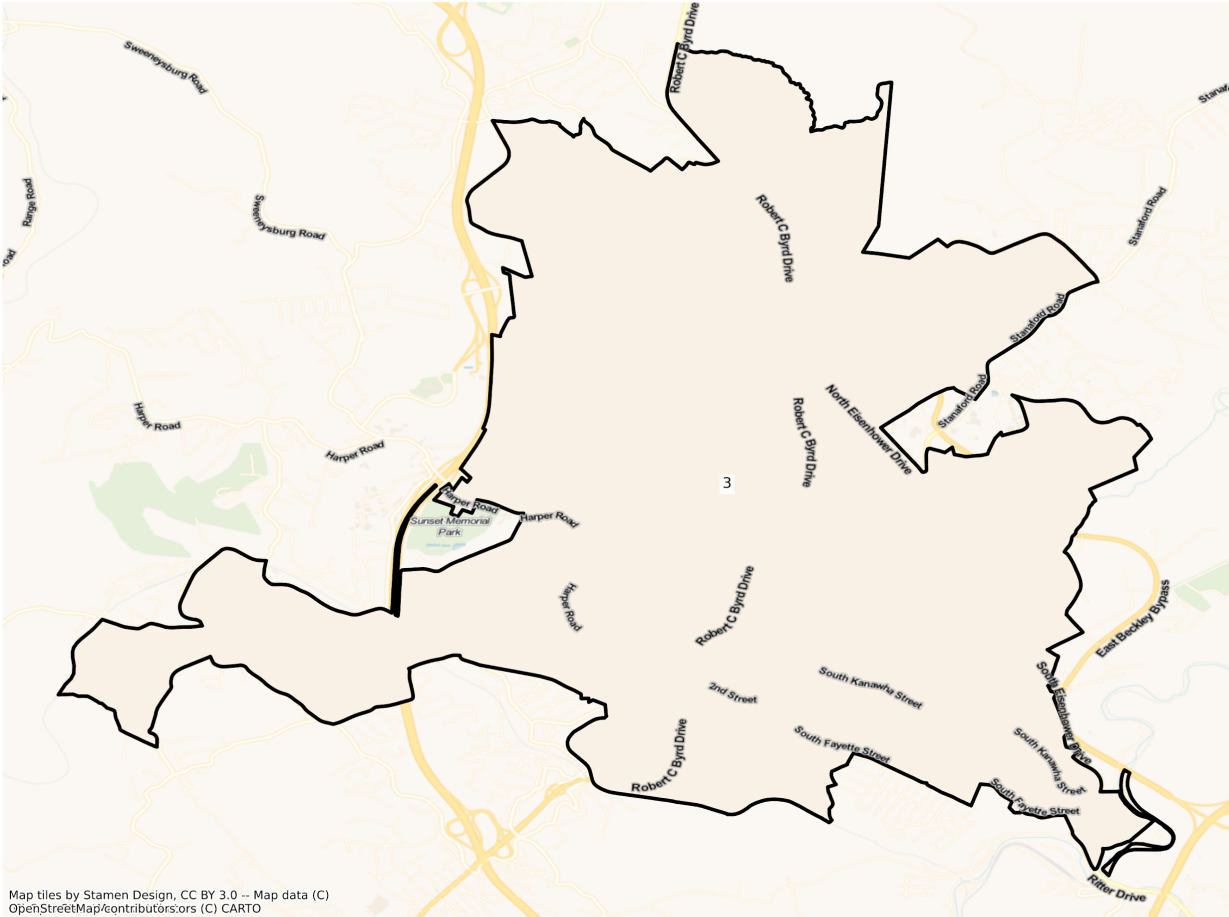
WV Beckley State House Districts
Population % Change from 2010 to 2020
Ethnicity: Not Latino White alone



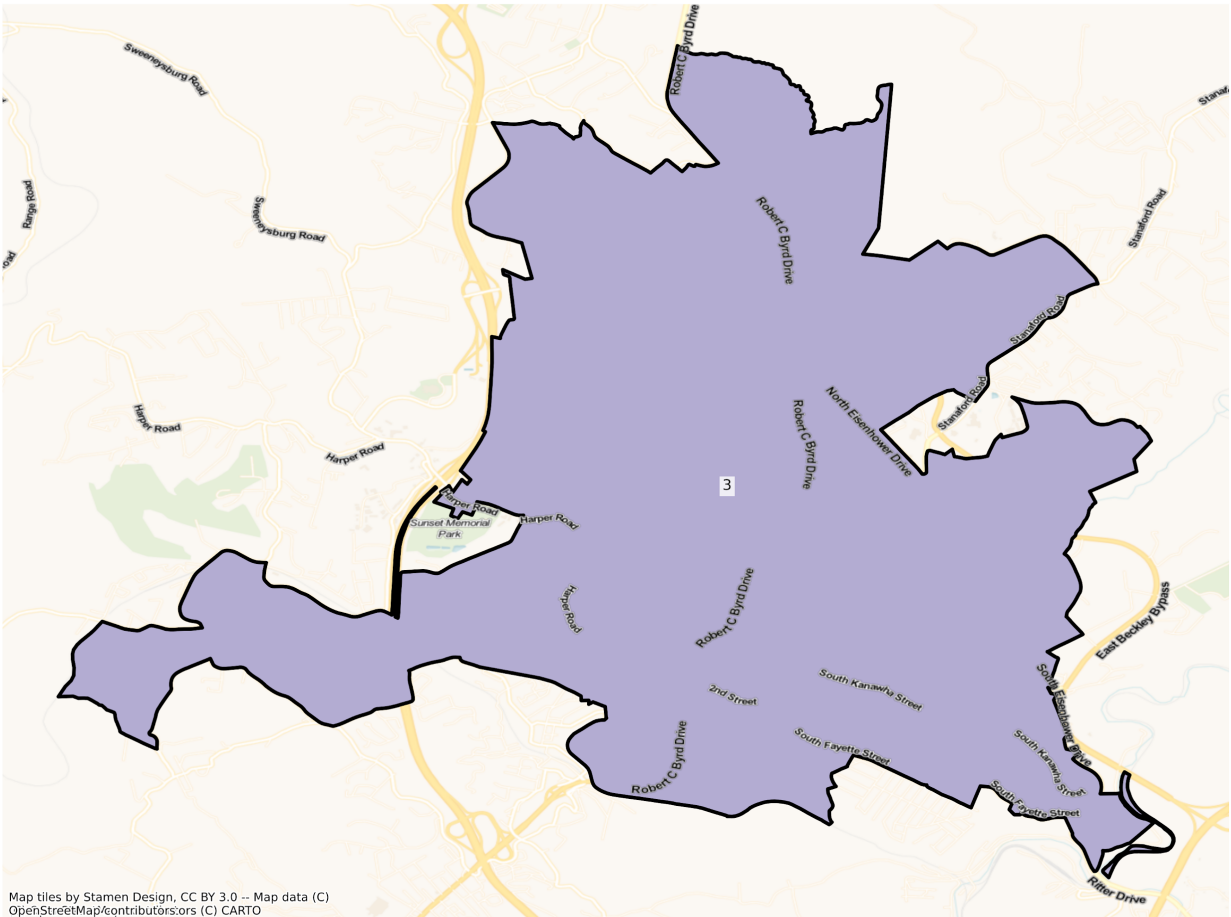
Map tiles by Stamen Design, CC BY 3.0 -- Map data (C)
OpenStreetMap/contributors;ors (C) CARTO



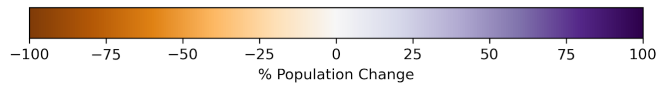
WV Beckley State House Districts
Population % Change from 2010 to 2020
Ethnicity: Not Latino African American alone



WV Beckley State House Districts
Population % Change from 2010 to 2020
Ethnicity: Hispanic or Latino

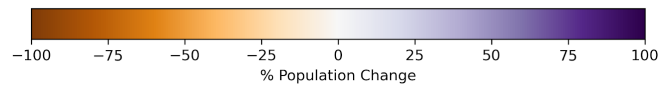
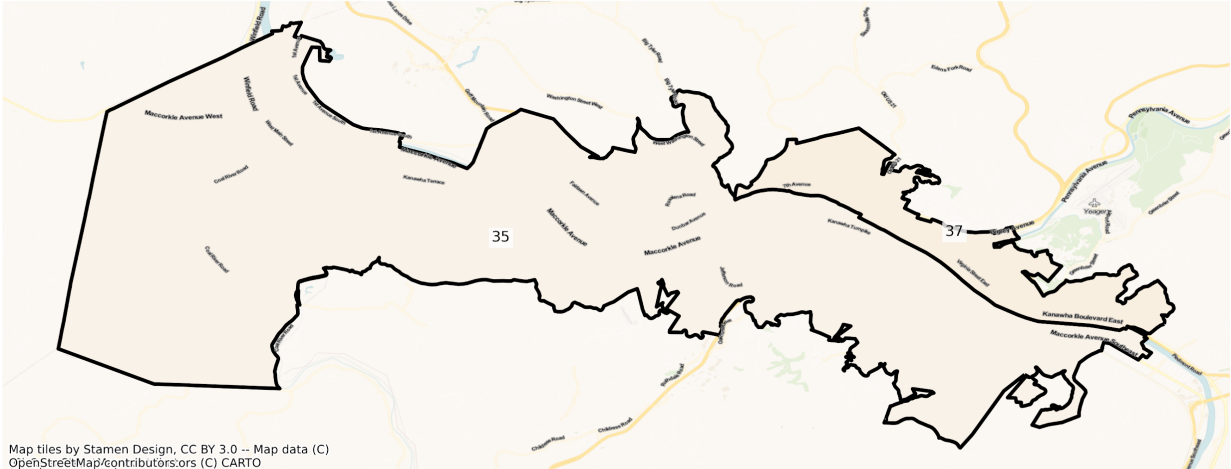


Map tiles by Stamen Design, CC BY 3.0 -- Map data (C)
OpenStreetMap/contributors;ors (C) CARTO

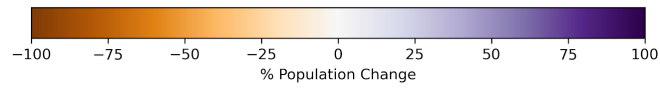
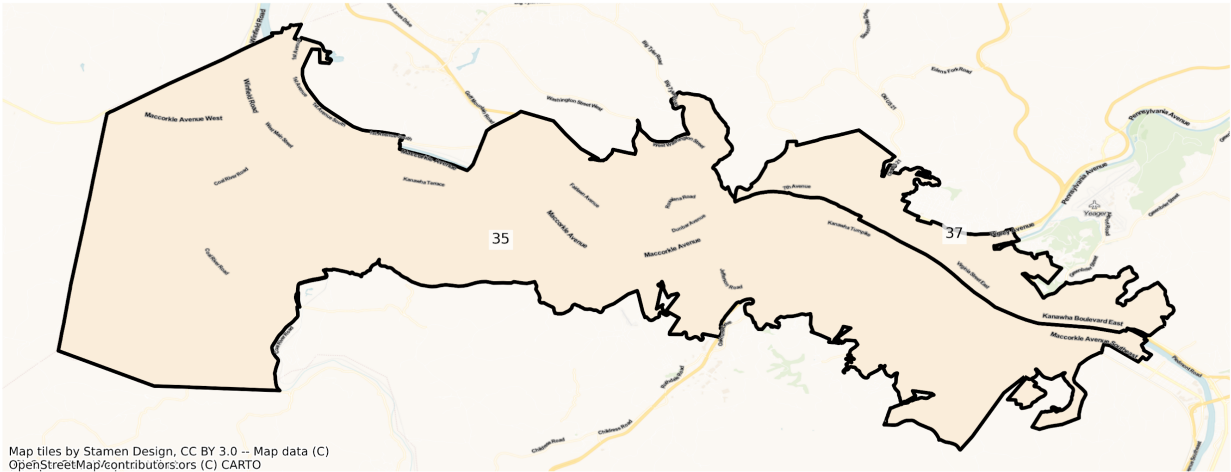


Charleston

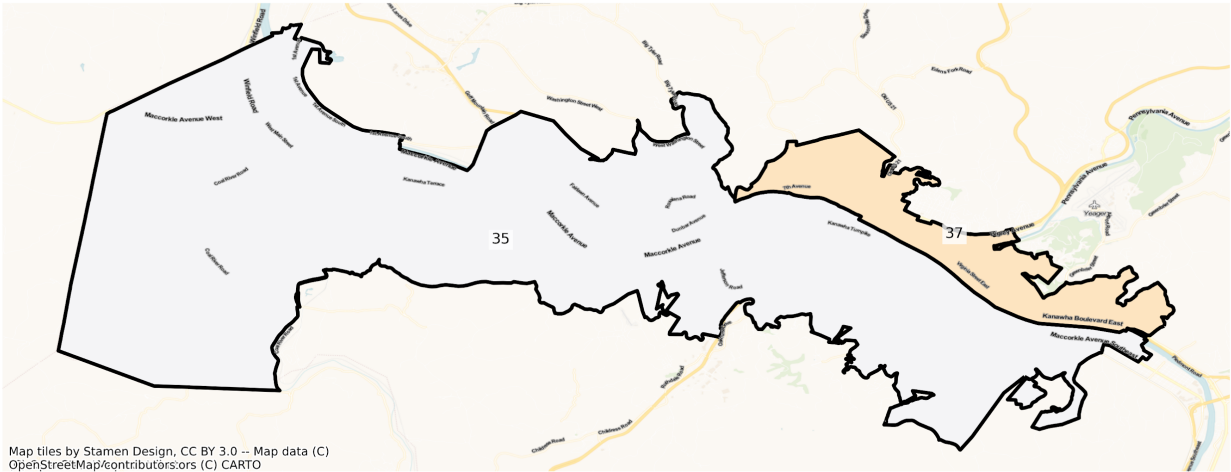
WV Charleston State House Districts
Population % Change from 2010 to 2020
Total Population



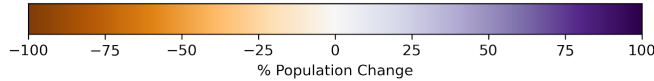
WV Charleston State House Districts
Population % Change from 2010 to 2020
Ethnicity: Not Latino White alone



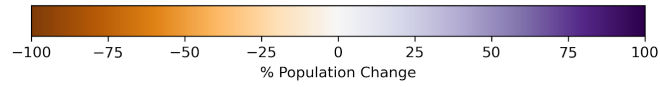
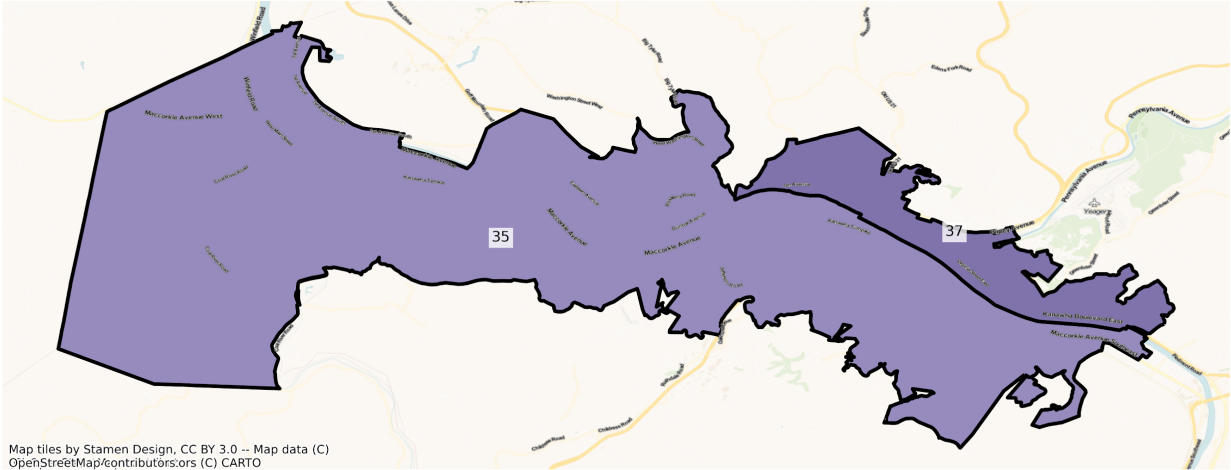
WV Charleston State House Districts
Population % Change from 2010 to 2020
Ethnicity: Not Latino African American alone



Map tiles by Stamen Design, CC BY 3.0 -- Map data (C) OpenStreetMap/contributors,ors (C) CARTO

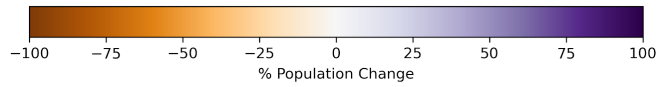
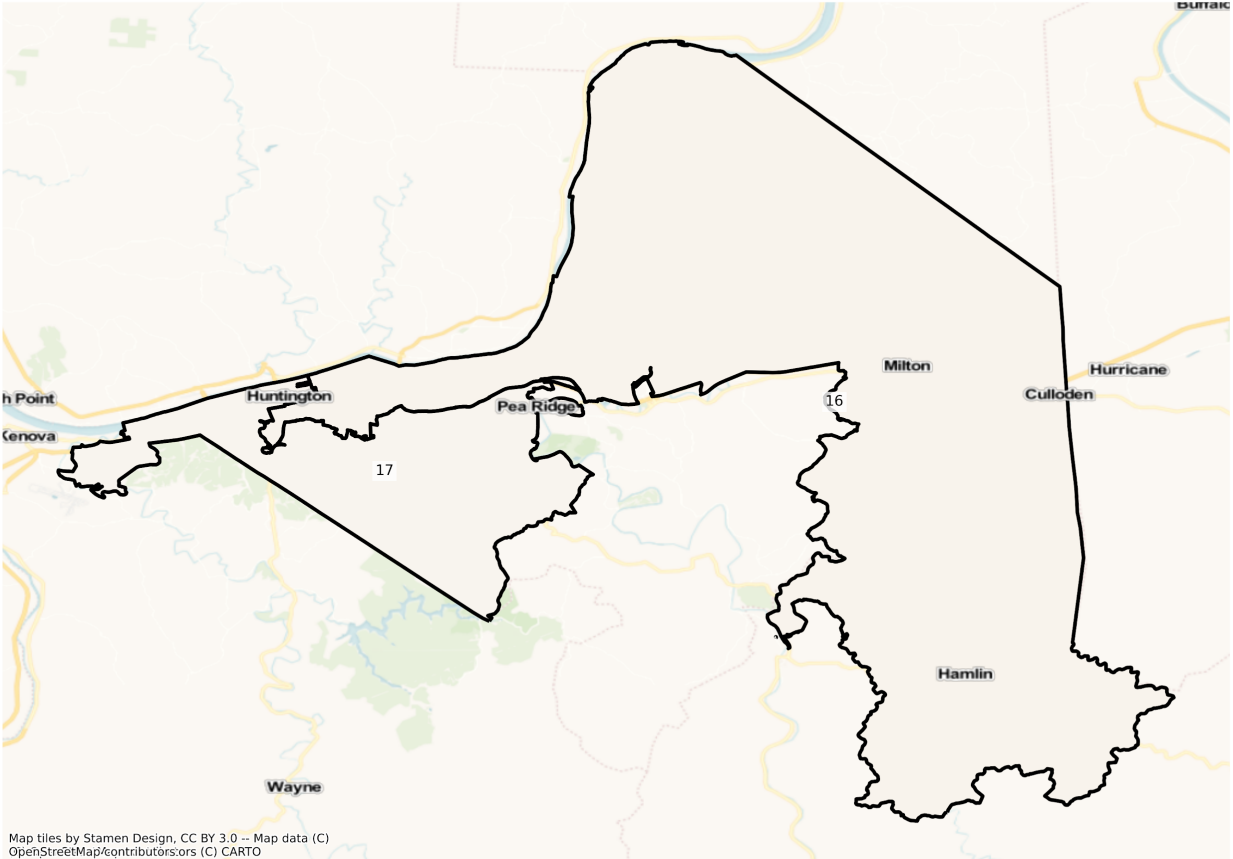


WV Charleston State House Districts
Population % Change from 2010 to 2020
Ethnicity: Hispanic or Latino

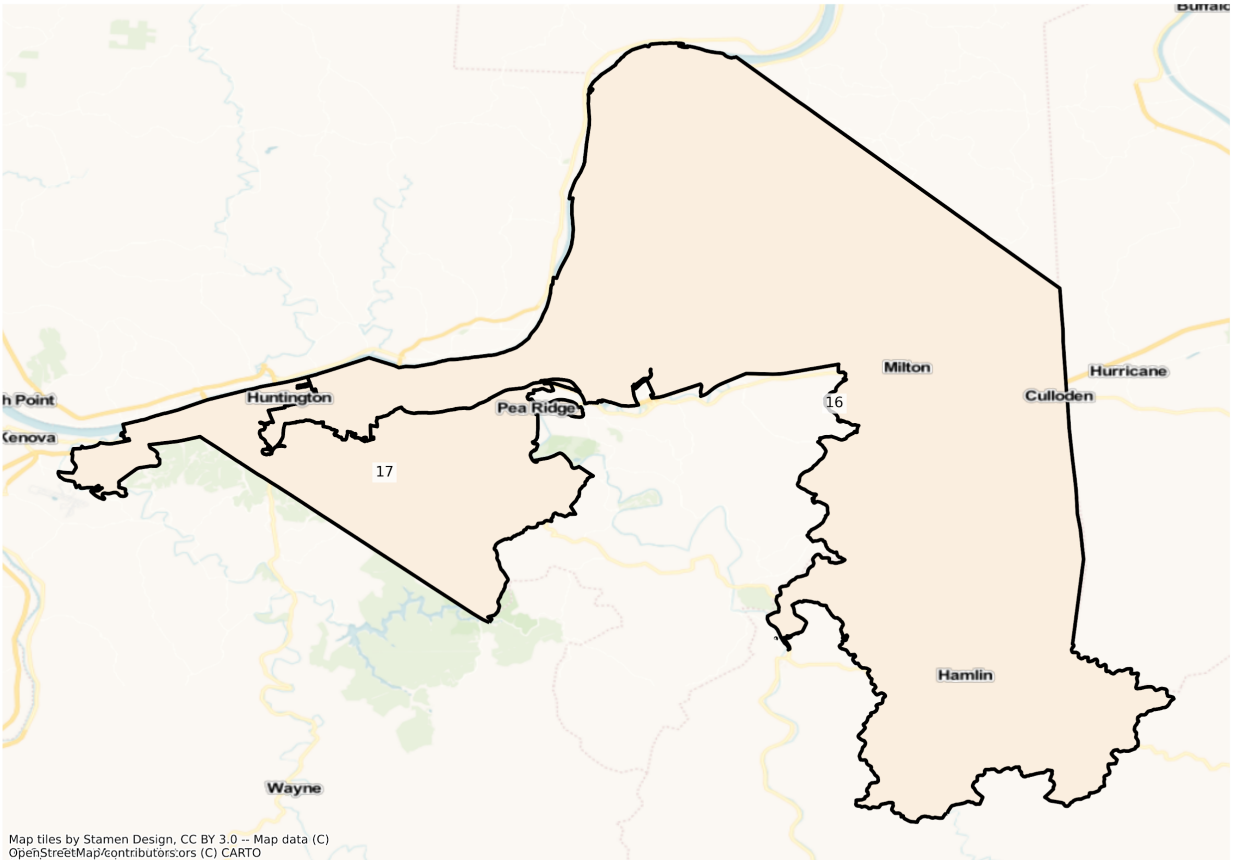


Huntington

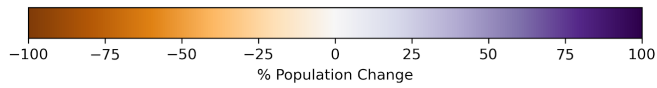
WV Huntington State House Districts
Population % Change from 2010 to 2020
Total Population



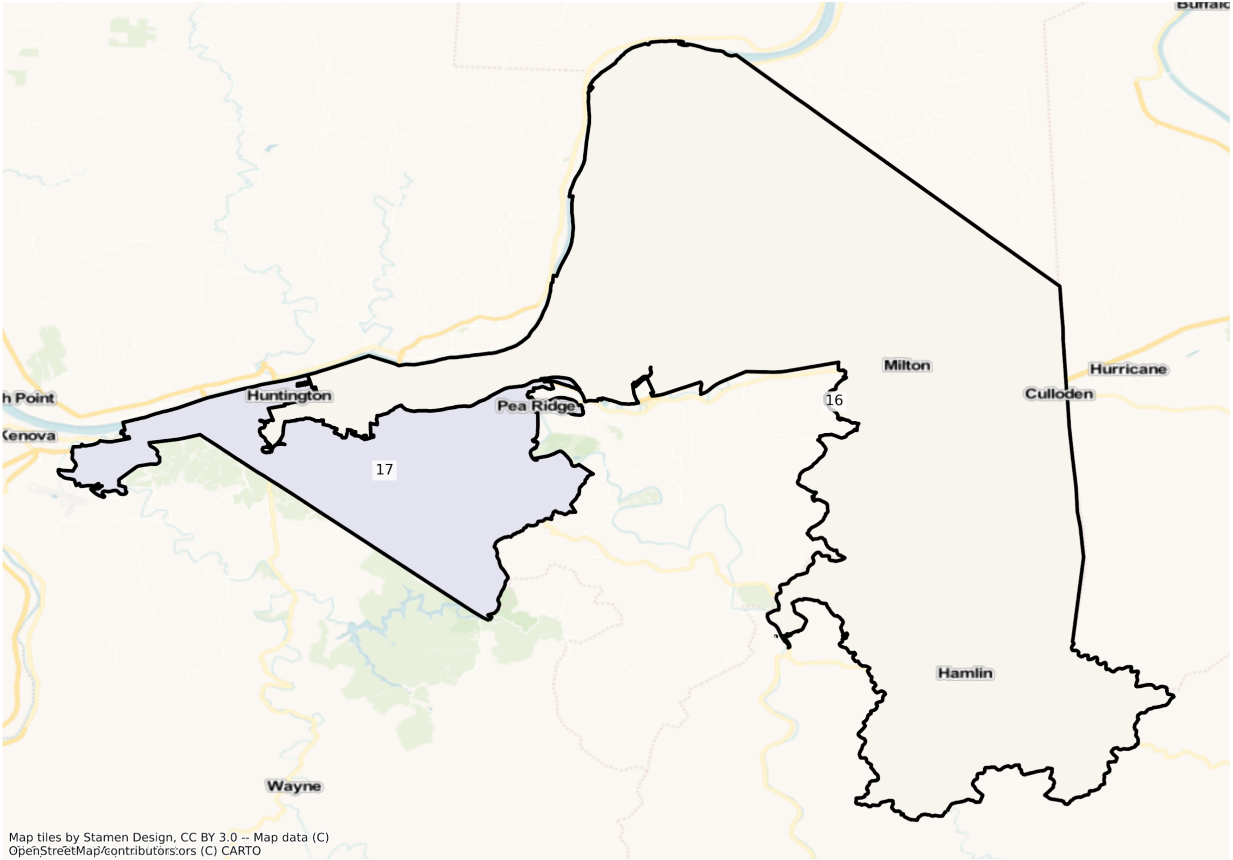
WV Huntington State House Districts
Population % Change from 2010 to 2020
Ethnicity: Not Latino White alone



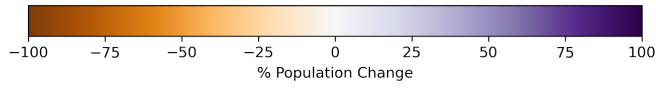
Map tiles by Stamen Design, CC BY 3.0 -- Map data (C)
OpenStreetMap/contributors/ors (C) CARTO



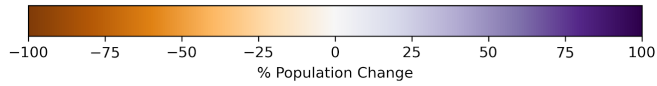
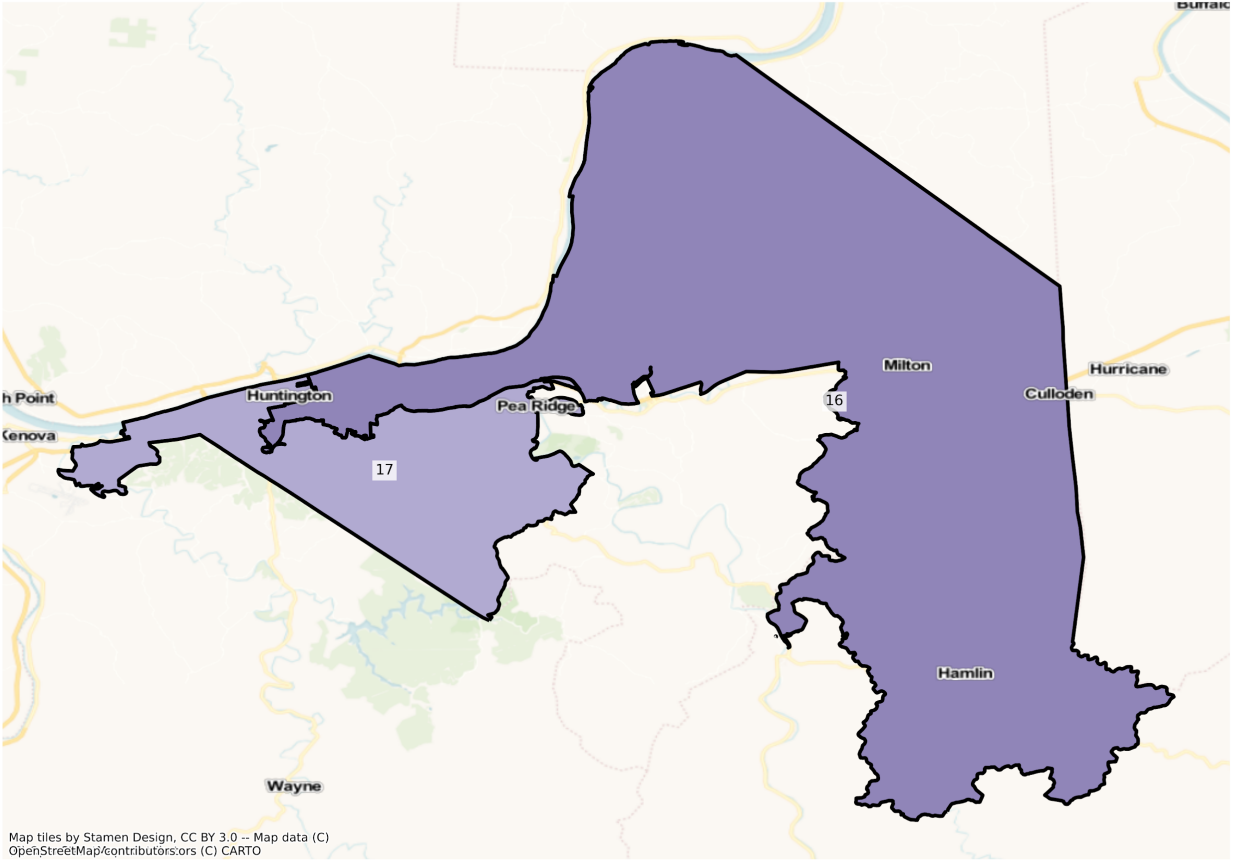
WV Huntington State House Districts
Population % Change from 2010 to 2020
Ethnicity: Not Latino African American alone



Map tiles by Stamen Design, CC BY 3.0 -- Map data (C)
OpenStreetMap/contributors/ors (C) CARTO

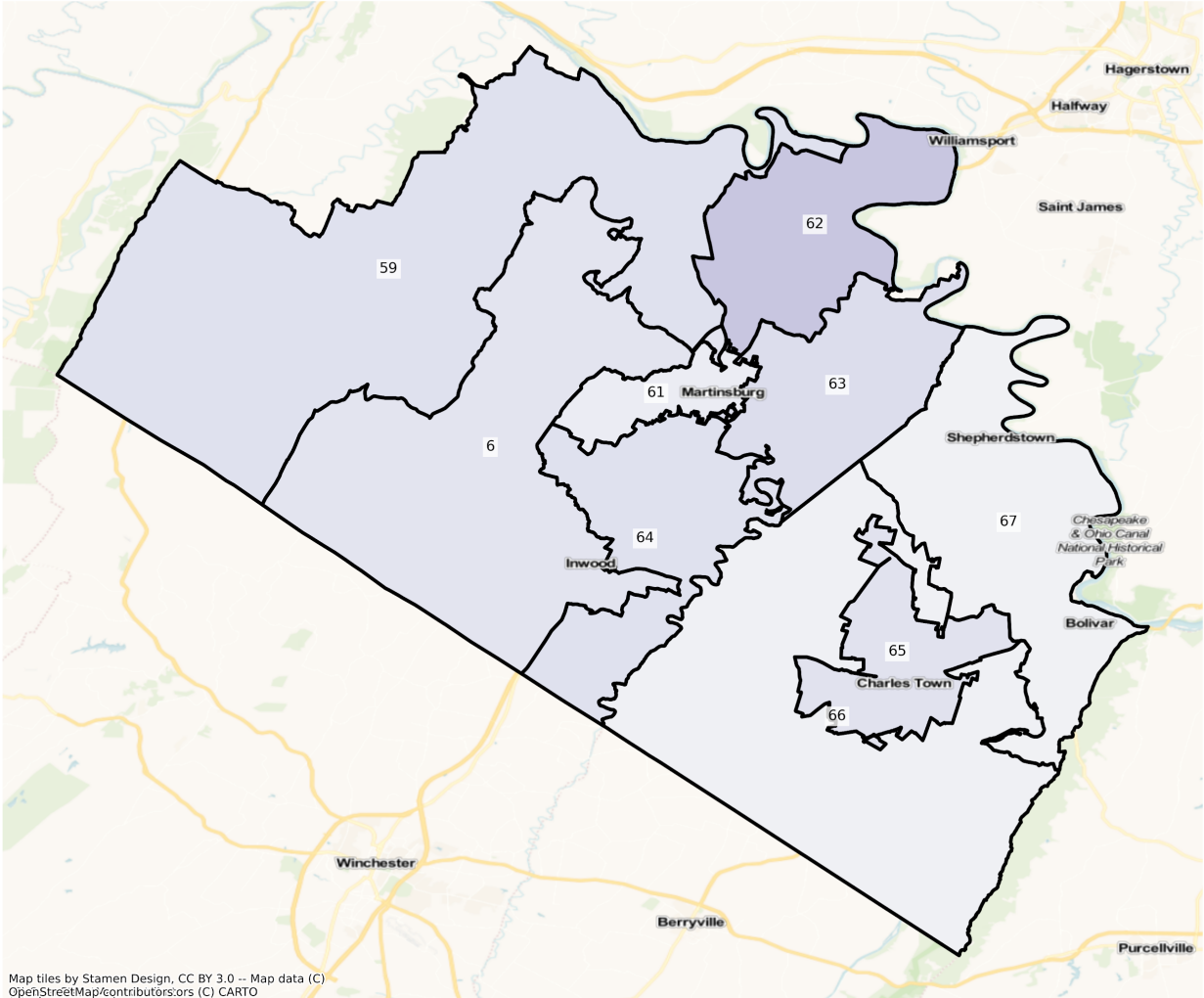


WV Huntington State House Districts
Population % Change from 2010 to 2020
Ethnicity: Hispanic or Latino

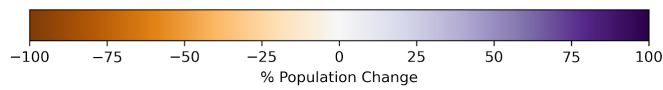


Martinsburg

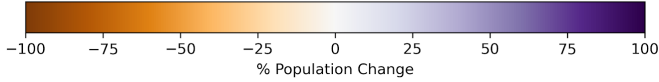
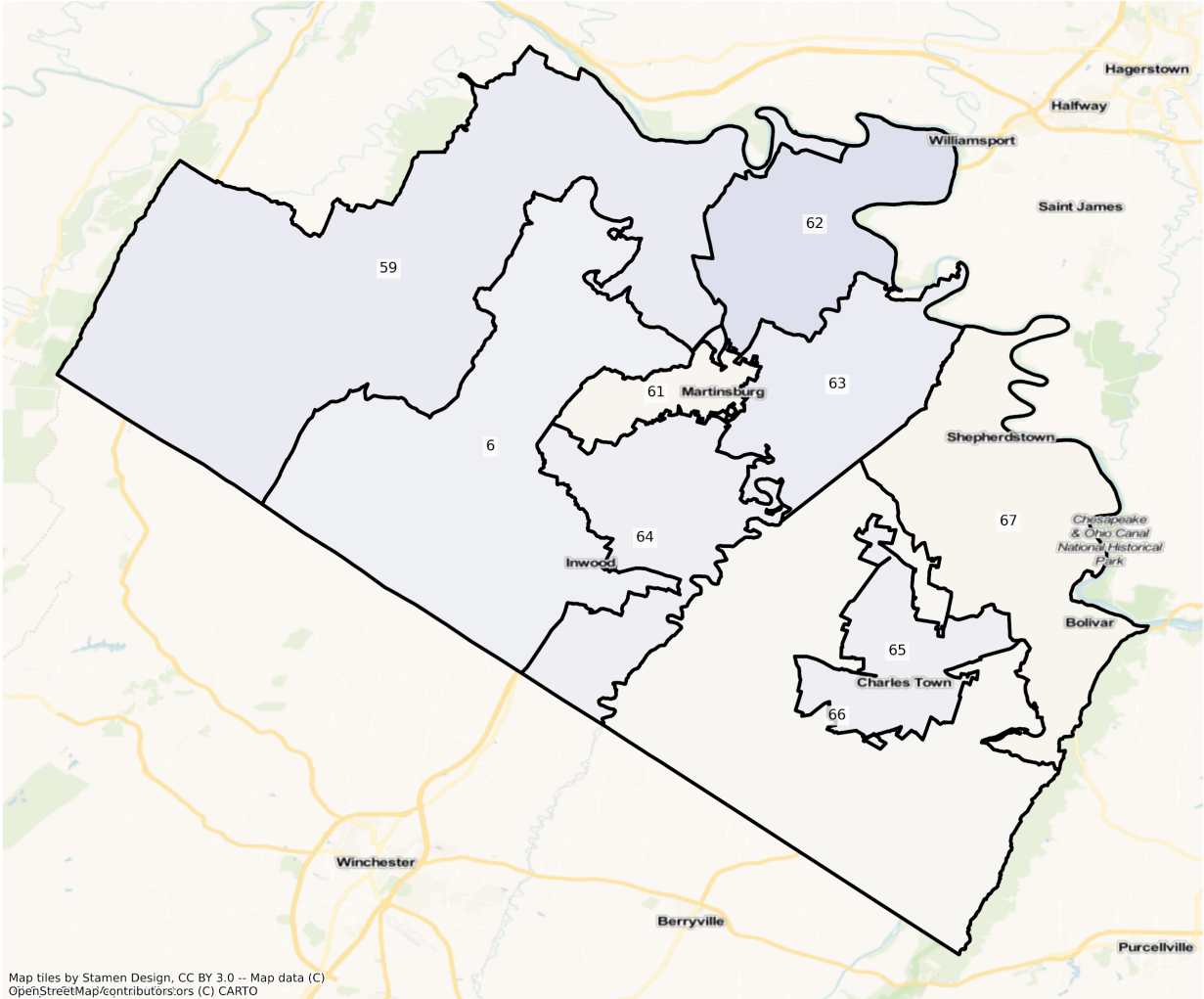
WV Martinsburg State House Districts
Population % Change from 2010 to 2020
Total Population



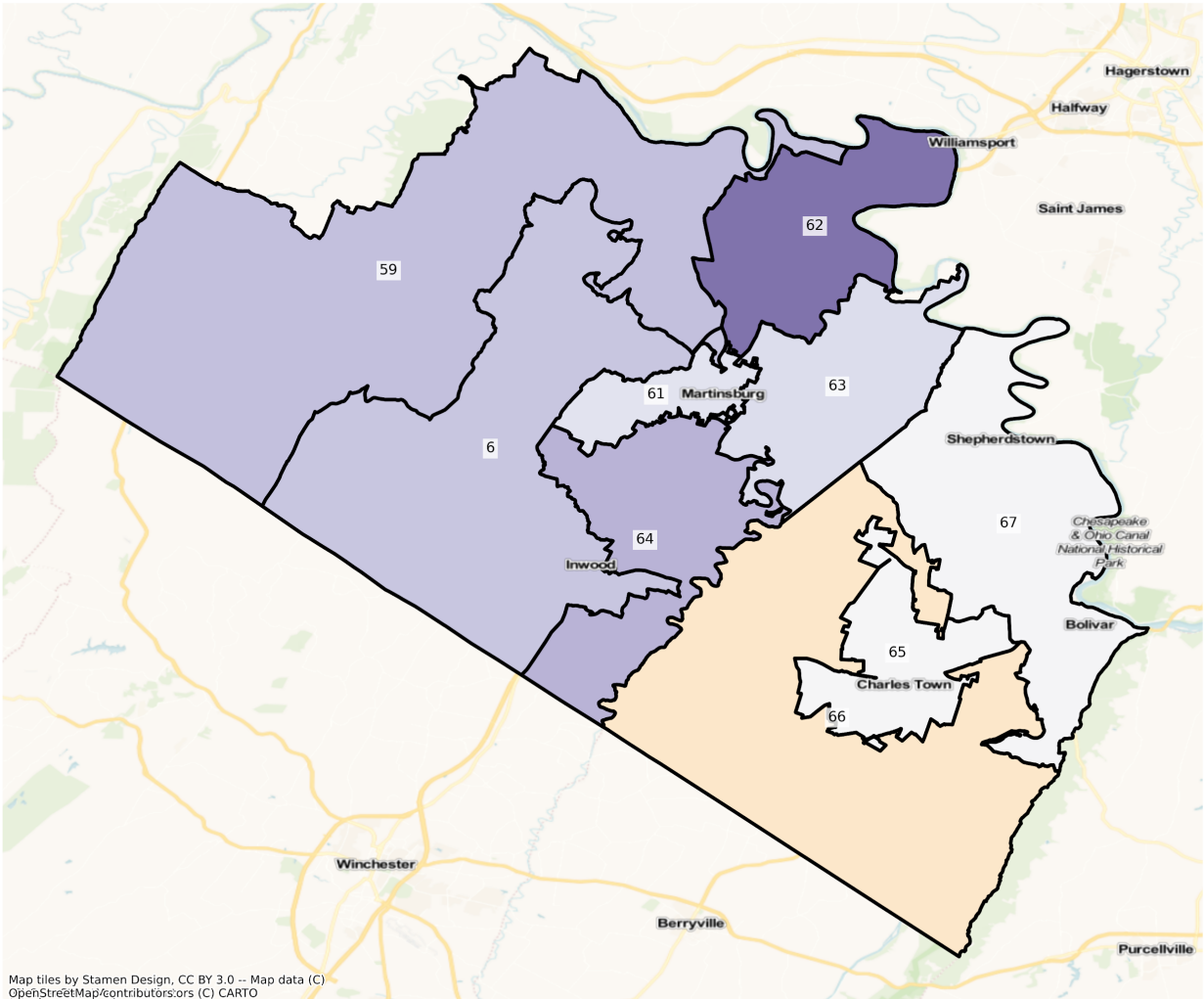
Map tiles by Stamen Design, CC BY 3.0 -- Map data (C) OpenStreetMap/contributors,ors (C) CARTO



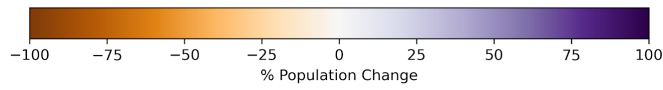
WV Martinsburg State House Districts
Population % Change from 2010 to 2020
Ethnicity: Not Latino White alone



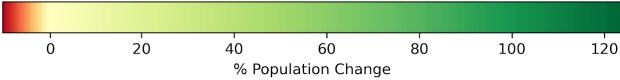
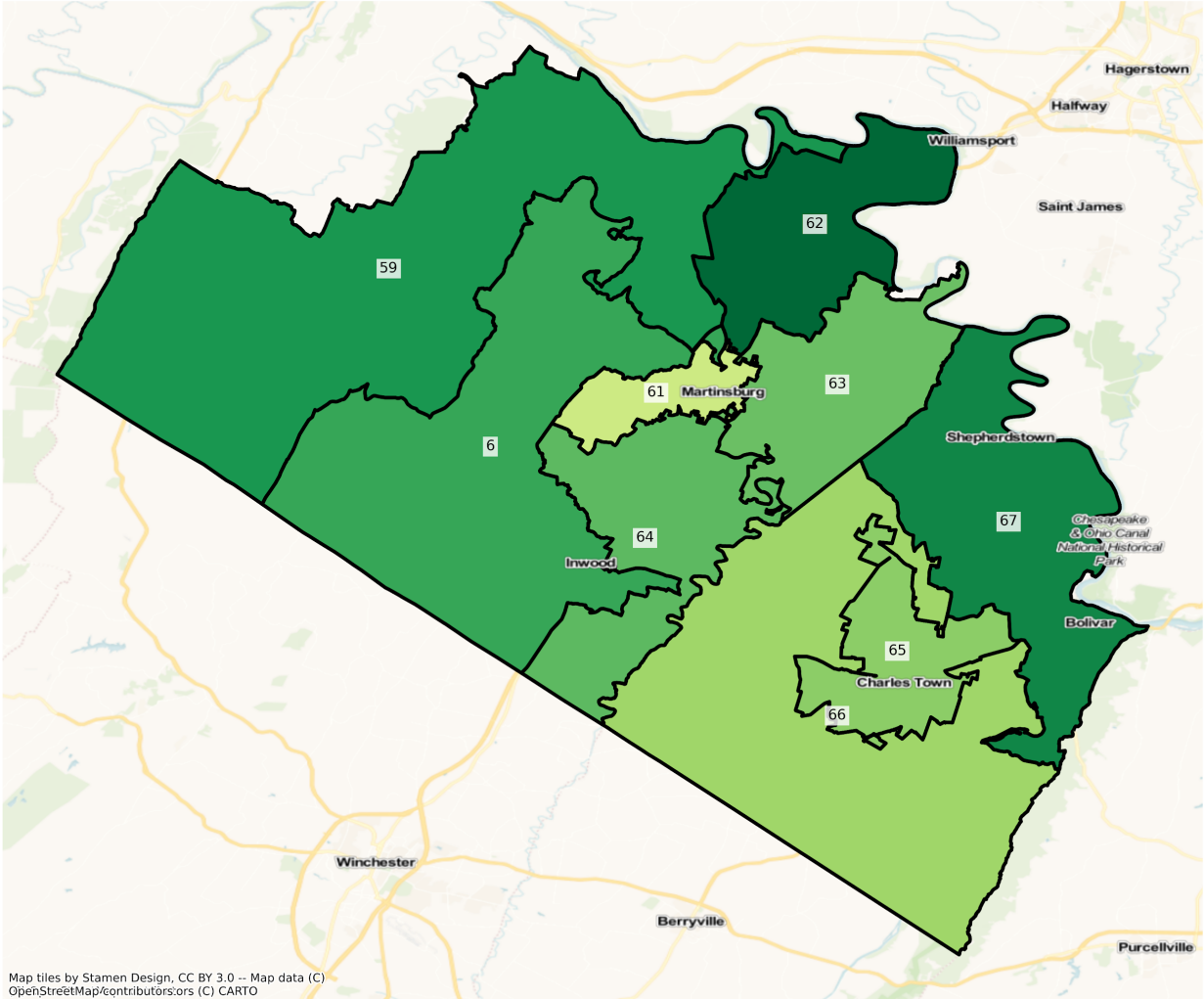
WV Martinsburg State House Districts
Population % Change from 2010 to 2020
Ethnicity: Not Latino African American alone



Map tiles by Stamen Design, CC BY 3.0 -- Map data (C)
OpenStreetMap/contributors:ors (C) CARTO

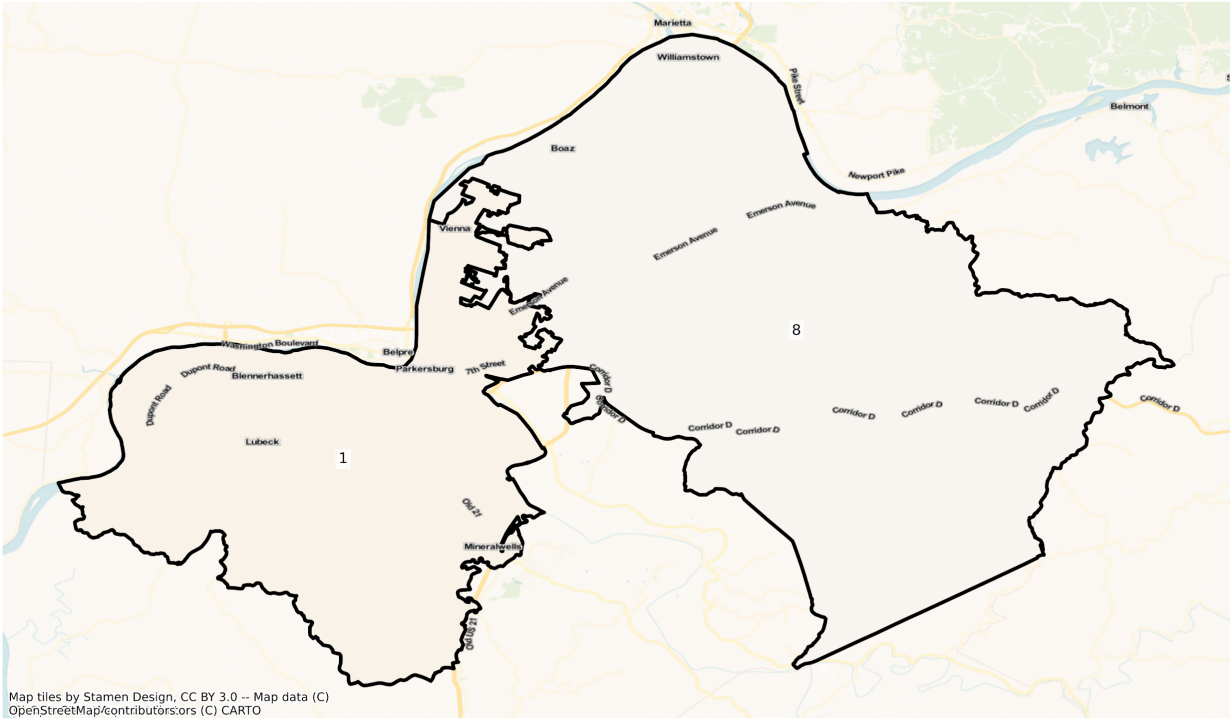


WV Martinsburg State House Districts
Population % Change from 2010 to 2020
Ethnicity: Hispanic or Latino

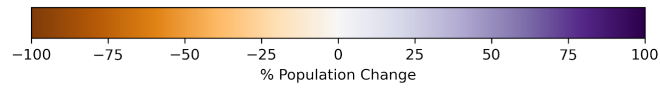


Parkersburg

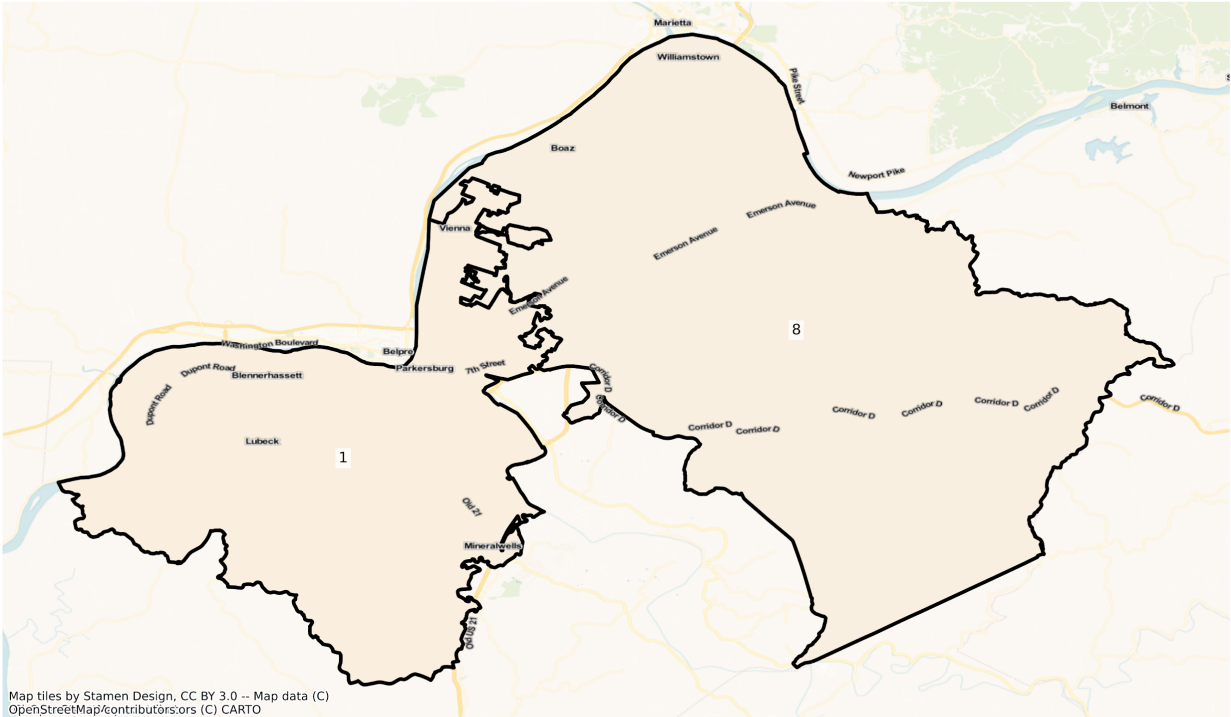
WV Parkersburg State House Districts
Population % Change from 2010 to 2020
Total Population



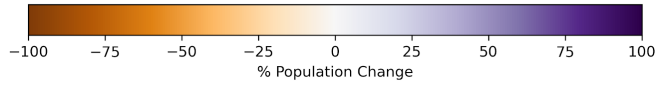
Map tiles by Stamen Design, CC BY 3.0 -- Map data (C)
OpenStreetMap/contributors/ors (C) CARTO



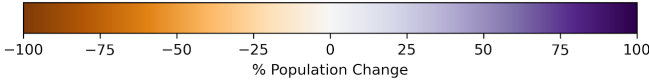
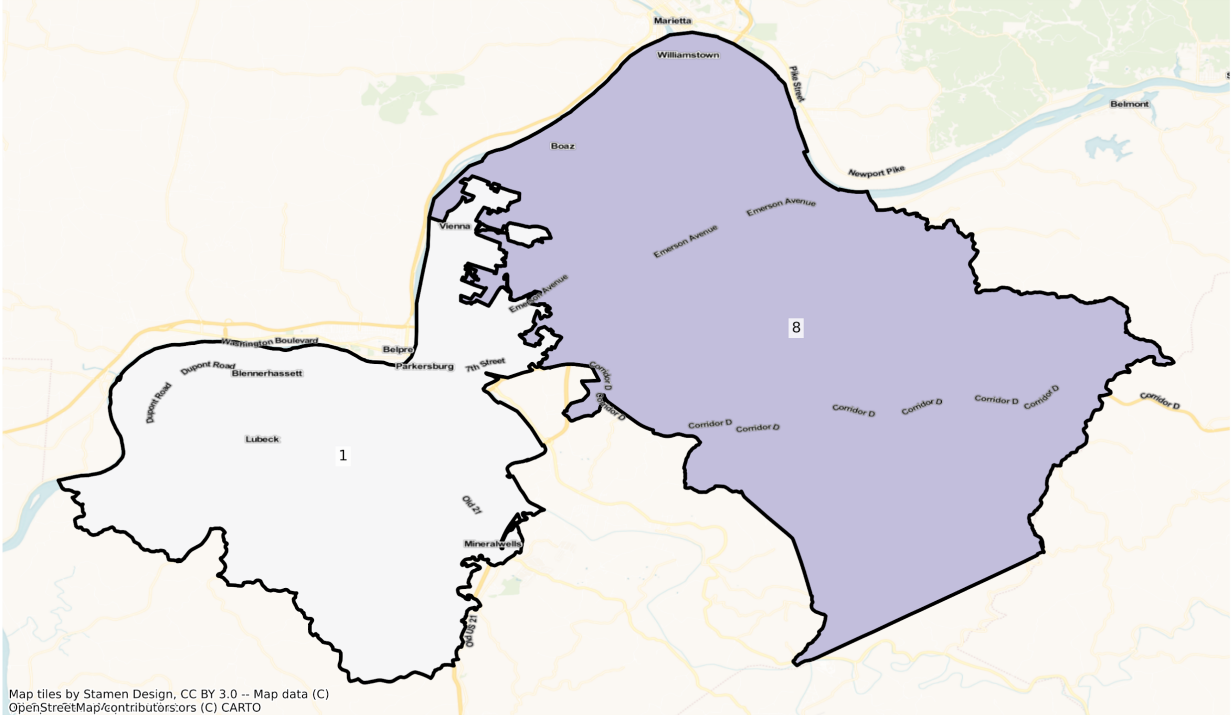
WV Parkersburg State House Districts
Population % Change from 2010 to 2020
Ethnicity: Not Latino White alone



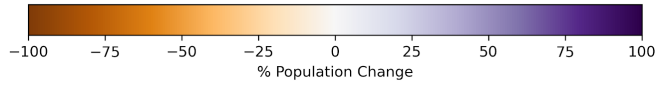
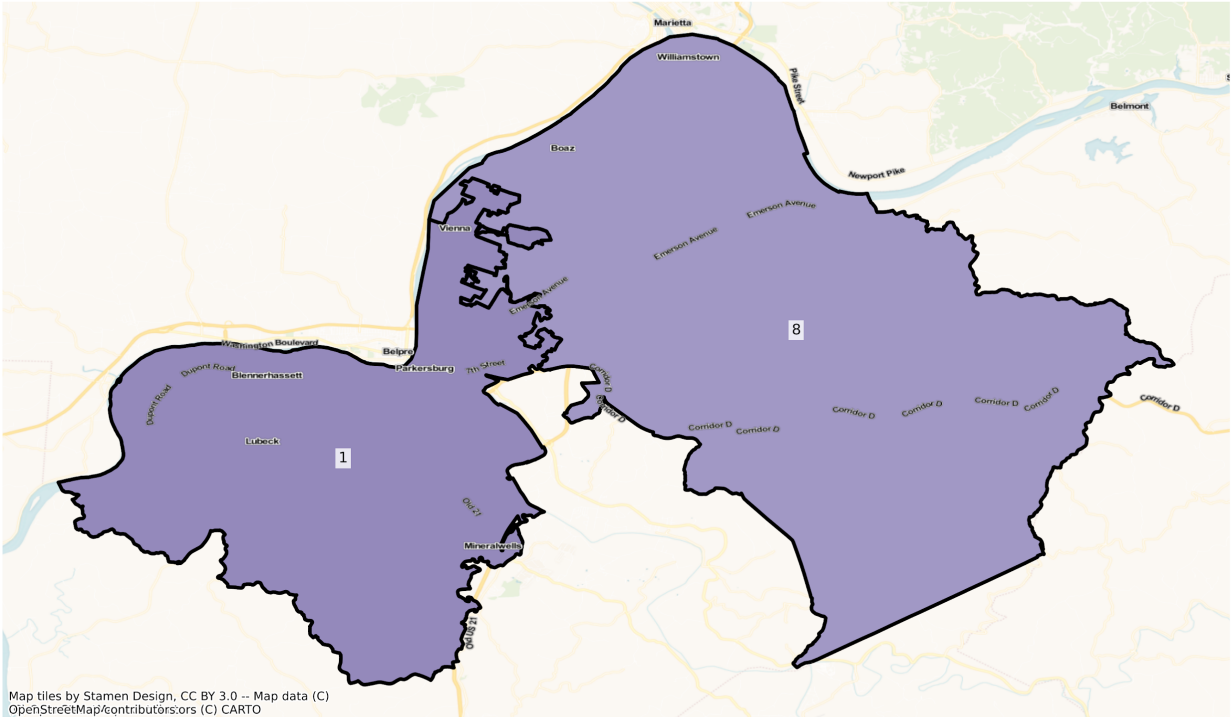
Map tiles by Stamen Design, CC BY 3.0 -- Map data (C)
OpenStreetMap/contributors/ors (C) CARTO



WV Parkersburg State House Districts
Population % Change from 2010 to 2020
Ethnicity: Not Latino African American alone

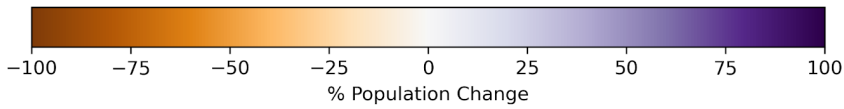
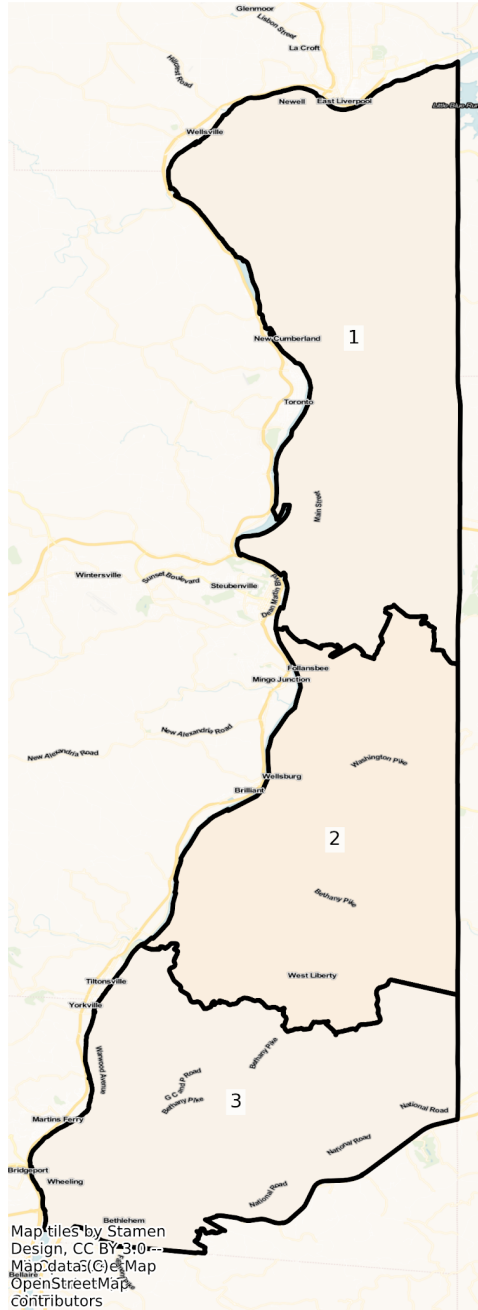


WV Parkersburg State House Districts
Population % Change from 2010 to 2020
Ethnicity: Hispanic or Latino

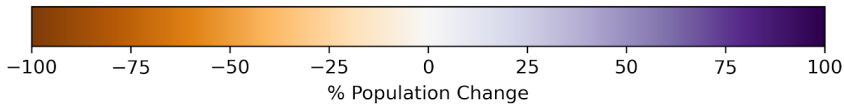
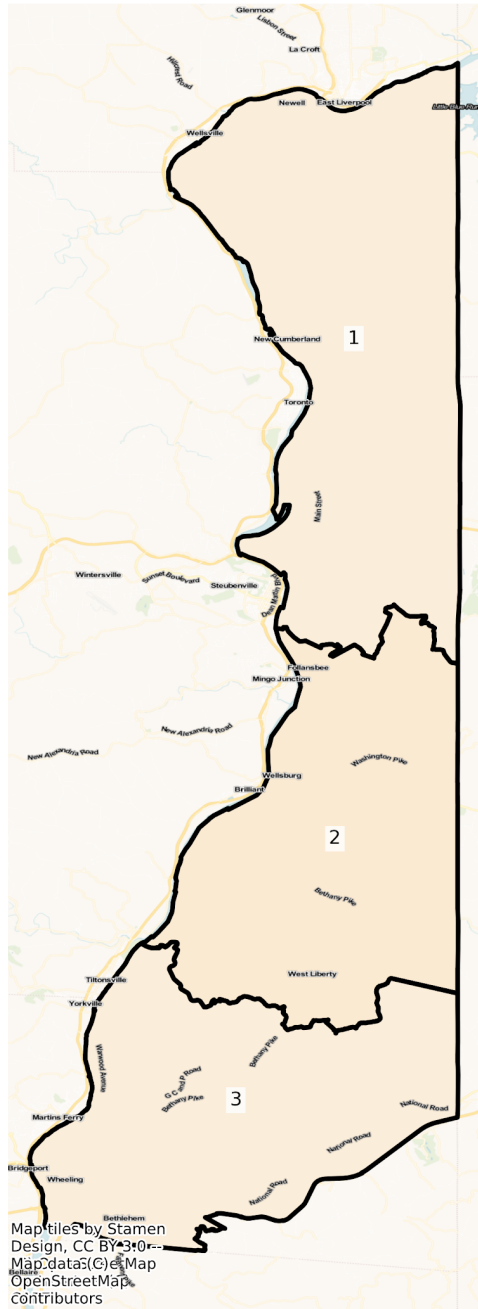


Weirton and Wheeling

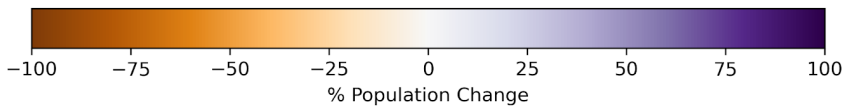
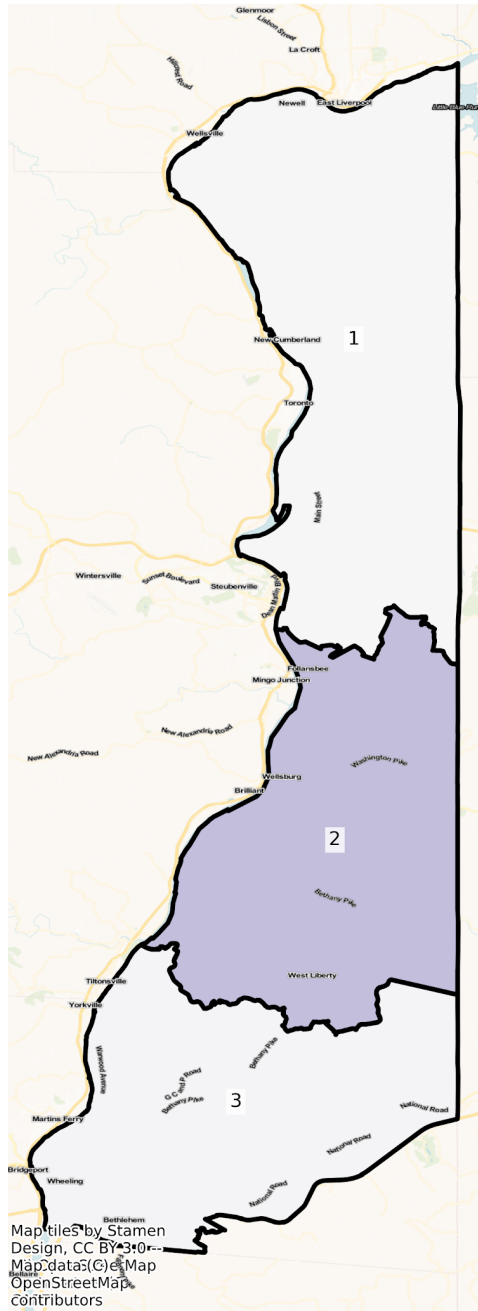
WV Weirton and Wheeling State House Districts
Population % Change from 2010 to 2020
Total Population



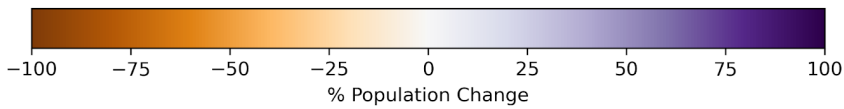
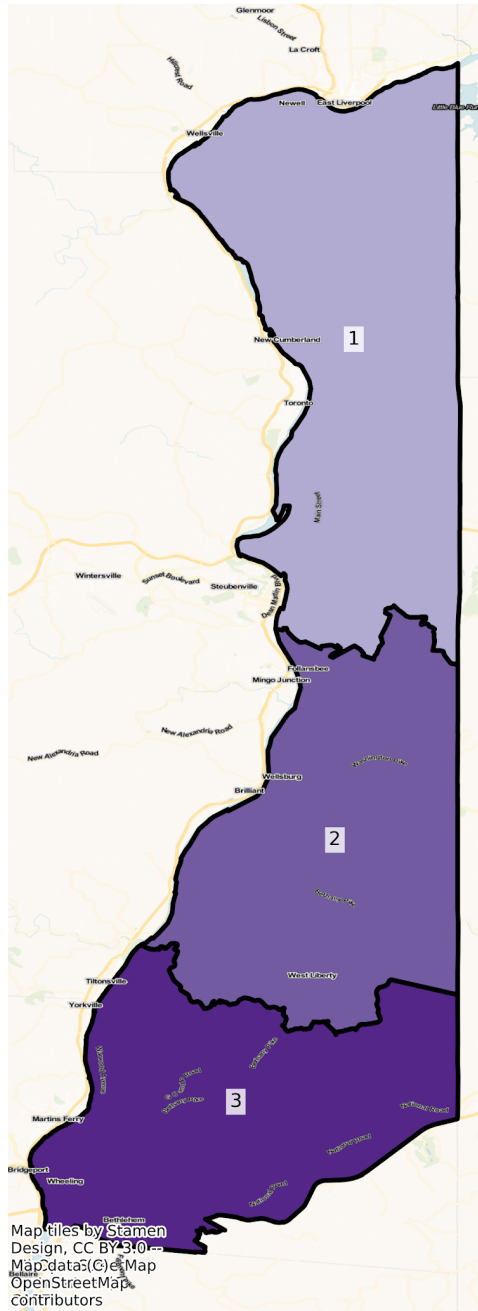
WV Weirton and Wheeling State House Districts
Population % Change from 2010 to 2020
Ethnicity: Not Latino White alone



WV Weirton and Wheeling State House Districts
Population % Change from 2010 to 2020
Ethnicity: Not Latino African American alone



WV Weirton and Wheeling State House Districts
Population % Change from 2010 to 2020
Ethnicity: Hispanic or Latino



2010 Population by Race and Ethnicity at the House of Delegates District Level

DISTRICT	Total Population	Hispanic or Latino Origin	White Alone, not Latino	African American Alone, not Latino	AIAN Alone, not Latino ¹	Asian Alone, not Latino	NHPI Alone, not Latino ²	Other Alone, not Latino	Two or More, not Latino
1	37596	371	35765	816	36	139	7	25	437
2	19295	130	18635	233	16	43	3	9	226
3	38904	327	35864	1520	49	350	5	44	745
4	36500	276	35526	201	50	125	2	14	306
5	17613	89	17321	25	14	46	1	3	114
6	17751	89	17332	125	40	26	1	2	136
7	17650	115	17231	115	22	18	0	15	134
8	18733	135	18139	114	47	93	7	11	187
9	18297	104	17884	55	30	49	1	5	169
10	55703	531	52999	780	119	336	21	54	863
11	18405	115	18048	24	34	43	1	5	135
12	17825	117	17432	56	17	41	5	2	155
13	37277	185	36339	172	75	117	16	12	361
14	17671	135	17175	100	22	53	12	5	169
15	18340	198	17303	299	25	276	9	18	212
16	52730	559	47062	3519	92	341	16	53	1088
17	35218	411	32520	1062	107	472	2	24	620
18	17626	148	16971	170	26	138	3	3	167
19	36810	164	36216	44	93	53	3	4	233
20	17294	108	16541	420	17	42	0	4	162
21	19160	41	18810	146	13	15	2	4	129
22	35063	195	34406	92	46	72	3	14	235
23	17873	84	17533	108	22	17	0	2	107
24	35516	216	34228	698	28	85	1	10	250
25	19118	66	18665	120	30	12	0	6	219
26	18576	108	16055	2135	30	22	0	6	220
27	58254	448	52846	3669	132	316	2	40	801
28	38885	560	35801	1786	95	167	5	30	441
29	19432	83	17913	1028	28	32	9	13	326
30	19373	304	14927	3147	62	413	1	16	503

31	19525	145	18670	414	27	92	6	10	161
32	57594	500	53515	2541	120	140	10	29	739
33	19328	120	18921	43	41	29	5	4	165
34	19450	527	17519	1083	59	48	14	10	190
35	70497	760	61708	5139	146	1104	9	85	1546
36	52987	469	48687	2377	95	446	14	38	861
37	18010	259	11108	5564	64	173	6	44	792
38	19438	198	18184	539	40	181	2	30	264
39	19388	104	18810	174	40	86	2	11	161
40	19472	84	19122	43	27	35	3	5	153
41	18808	105	18412	58	34	56	3	1	139
42	38859	546	36063	1409	103	157	9	22	550
43	37837	254	36676	401	80	102	1	18	305
44	19121	93	18726	34	31	24	4	2	207
45	19266	213	18610	135	34	75	1	7	191
46	18466	137	18000	70	38	55	1	7	158
47	19276	115	18637	121	96	35	3	6	263
48	70422	894	66918	1123	128	323	15	30	991
49	18643	158	18051	132	44	65	1	4	188
50	55378	510	51856	1835	96	281	4	43	753
51	93122	1664	83345	3419	127	2915	42	92	1518
52	19110	155	18421	329	26	37	10	8	124
53	18858	96	18522	41	41	18	1	8	131
54	19348	150	18891	119	22	26	3	5	132
55	19413	544	18015	466	38	159	0	10	181
56	19379	151	18089	720	27	97	0	13	282
57	19420	178	18822	164	34	34	2	6	180
58	19150	220	18447	141	47	56	16	9	214
59	19060	370	17756	470	57	141	6	4	256
60	19450	507	17811	607	47	143	3	18	314
61	18433	1092	13970	2506	45	215	5	23	577
62	17796	603	15601	1033	37	133	3	16	370
63	17636	776	14279	1826	41	161	7	16	530
64	18344	662	16334	818	29	85	7	27	382
65	18261	1409	14032	1926	41	281	16	44	512

66	17646	641	15772	725	41	131	12	15	309
67	17590	440	15759	794	33	193	2	19	350

¹American Indian and Alaska Native Alone, not Latino

²Native Hawaiian and Pacific Islander Alone, not Latino

2020 Population by Race and Ethnicity at the House of Delegates District Level

DISTRICT	Total Population	Hispanic or Latino Origin	White Alone, not Latino	African American Alone, not Latino	AIAN Alone, not Latino ¹	Asian Alone, not Latino	NHPI Alone, not Latino ²	Other Alone, not Latino	Two or More, not Latino
1	35660	520	32463	819	35	145	8	88	1582
2	17857	216	16487	307	37	40	0	70	700
3	37152	588	32738	1547	58	337	20	117	1747
4	34001	388	31816	303	38	138	7	67	1244
5	15391	154	14624	35	19	50	0	11	498
6	16474	131	15580	180	31	18	0	28	506
7	15694	142	14960	109	27	36	7	18	395
8	18343	198	17002	150	26	109	7	42	809
9	17680	190	16830	86	28	48	4	21	473
10	53517	808	48930	786	98	407	10	154	2324
11	17344	176	16403	46	34	50	0	15	620
12	16864	106	16158	53	26	46	1	29	445
13	35421	327	33536	232	54	101	4	72	1095
14	17069	132	16294	115	19	55	2	9	443
15	19483	295	17614	334	16	361	2	66	795
16	51063	858	43747	3423	107	536	14	164	2214
17	34188	576	30082	1200	71	517	9	119	1614
18	18148	216	16771	193	26	293	0	30	619
19	33496	249	32127	111	35	65	7	41	861
20	15420	125	14417	400	28	29	1	23	397
21	16861	86	16313	97	11	6	0	15	333
22	33288	365	31690	166	41	91	4	48	883
23	15610	103	14808	111	33	30	2	12	511
24	31386	189	29688	491	41	58	1	34	884
25	16748	108	15979	129	23	10	0	21	478

26	16594	394	13333	2150	30	25	4	46	612
27	56235	673	49102	3630	146	287	6	131	2260
28	36234	481	32719	1547	79	174	0	81	1153
29	17649	174	15912	825	24	64	0	20	630
30	19161	425	14119	2989	42	436	11	66	1073
31	17647	216	16468	279	32	91	3	16	542
32	50804	687	45346	2162	125	192	3	139	2150
33	16416	127	15654	46	44	32	2	3	508
34	16563	299	14832	946	20	46	11	16	393
35	67508	1149	56023	5226	138	1189	22	296	3465
36	47776	572	41778	2443	99	528	6	192	2158
37	16782	414	10167	4644	53	151	12	113	1228
38	20703	422	18218	833	39	248	3	70	870
39	18445	182	17317	192	23	75	1	46	609
40	17127	132	16294	70	21	51	4	38	517
41	17994	146	17163	43	33	65	8	11	525
42	35703	660	32437	1039	62	210	4	94	1197
43	35555	417	33259	476	78	104	1	110	1110
44	17527	86	16915	34	26	16	2	15	433
45	18848	267	17590	197	33	79	5	23	654
46	19302	230	18213	79	21	62	7	25	665
47	17963	217	16731	268	39	33	0	20	655
48	67429	1422	61254	1109	136	493	28	151	2836
49	18306	231	17073	137	22	56	1	34	752
50	55144	867	49211	1840	117	254	42	116	2697
51	102806	3239	86204	4041	144	3712	63	370	5033
52	20314	567	17094	1962	52	44	4	12	579
53	18145	159	17317	48	19	14	2	25	561
54	17615	152	16831	136	25	46	2	22	401
55	18603	703	16738	477	19	53	0	44	569
56	18430	226	16501	657	34	83	5	43	881
57	18952	240	17836	150	23	53	4	56	590
58	18413	286	17178	102	33	61	0	57	696
59	21931	735	19151	616	34	215	7	78	1095
60	21885	958	18759	778	41	179	8	61	1101

61	19818	1422	13664	2851	58	329	6	85	1403
62	22889	1349	18077	1648	48	321	7	93	1346
63	20723	1338	15390	2152	56	275	5	126	1381
64	21088	1170	17354	1113	51	162	10	87	1141
65	20961	2252	14855	1942	38	445	1	100	1328
66	18489	974	15632	626	36	164	7	124	926
67	18339	913	15377	812	30	208	2	79	918

¹American Indian and Alaska Native Alone, not Latino

²Native Hawaiian and Pacific Islander Alone, not Latino

Percent Change of Population from 2010 to 2020 by Race and Ethnicity
at the House of Delegates District Level

DISTRICT	Total Population	Hispanic or Latino Origin	White Alone, not Latino	African American Alone, not Latino	AIAN Alone, not Latino ¹	Asian Alone, not Latino	NHPI Alone, not Latino ²	Other Alone, not Latino	Two or More, not Latino
1	-5.15%	40.16%	-9.23%	0.37%	-2.78%	4.32%	14.29%	252.00%	262.01%
2	-7.45%	66.15%	-11.53%	31.76%	131.25%	-6.98%	-100.00%	677.78%	209.73%
3	-4.50%	79.82%	-8.72%	1.78%	18.37%	-3.71%	300.00%	165.91%	134.50%
4	-6.85%	40.58%	-10.44%	50.75%	-24.00%	10.40%	250.00%	378.57%	306.54%
5	-12.62%	73.03%	-15.57%	40.00%	35.71%	8.70%	-100.00%	266.67%	336.84%
6	-7.19%	47.19%	-10.11%	44.00%	-22.50%	-30.77%	-100.00%	1300.00%	272.06%
7	-11.08%	23.48%	-13.18%	-5.22%	22.73%	100.00%	inf	20.00%	194.78%
8	-2.08%	46.67%	-6.27%	31.58%	-44.68%	17.20%	0.00%	281.82%	332.62%
9	-3.37%	82.69%	-5.89%	56.36%	-6.67%	-2.04%	300.00%	320.00%	179.88%
10	-3.92%	52.17%	-7.68%	0.77%	-17.65%	21.13%	-52.38%	185.19%	169.29%
11	-5.76%	53.04%	-9.11%	91.67%	0.00%	16.28%	-100.00%	200.00%	359.26%
12	-5.39%	-9.40%	-7.31%	-5.36%	52.94%	12.20%	-80.00%	1350.00%	187.10%
13	-4.98%	76.76%	-7.71%	34.88%	-28.00%	-13.68%	-75.00%	500.00%	203.32%
14	-3.41%	-2.22%	-5.13%	15.00%	-13.64%	3.77%	-83.33%	80.00%	162.13%
15	6.23%	48.99%	1.80%	11.71%	-36.00%	30.80%	-77.78%	266.67%	275.00%
16	-3.16%	53.49%	-7.04%	-2.73%	16.30%	57.18%	-12.50%	209.43%	103.49%
17	-2.92%	40.15%	-7.50%	12.99%	-33.64%	9.53%	350.00%	395.83%	160.32%
18	2.96%	45.95%	-1.18%	13.53%	0.00%	112.32%	-100.00%	900.00%	270.66%
19	-9.00%	51.83%	-11.29%	152.27%	-62.37%	22.64%	133.33%	925.00%	269.53%

20	-10.84%	15.74%	-12.84%	-4.76%	64.71%	-30.95%	inf	475.00%	145.06%
21	-12.00%	109.76%	-13.27%	-33.56%	-15.38%	-60.00%	-100.00%	275.00%	158.14%
22	-5.06%	87.18%	-7.89%	80.43%	-10.87%	26.39%	33.33%	242.86%	275.74%
23	-12.66%	22.62%	-15.54%	2.78%	50.00%	76.47%	inf	500.00%	377.57%
24	-11.63%	-12.50%	-13.26%	-29.66%	46.43%	-31.76%	0.00%	240.00%	253.60%
25	-12.40%	63.64%	-14.39%	7.50%	-23.33%	-16.67%		250.00%	118.26%
26	-10.67%	264.81%	-16.95%	0.70%	0.00%	13.64%	inf	666.67%	178.18%
27	-3.47%	50.22%	-7.08%	-1.06%	10.61%	-9.18%	200.00%	227.50%	182.15%
28	-6.82%	-14.11%	-8.61%	-13.38%	-16.84%	4.19%	-100.00%	170.00%	161.45%
29	-9.18%	109.64%	-11.17%	-19.75%	-14.29%	100.00%	-100.00%	53.85%	93.25%
30	-1.09%	39.80%	-5.41%	-5.02%	-32.26%	5.57%	1000.00%	312.50%	113.32%
31	-9.62%	48.97%	-11.79%	-32.61%	18.52%	-1.09%	-50.00%	60.00%	236.65%
32	-11.79%	37.40%	-15.26%	-14.92%	4.17%	37.14%	-70.00%	379.31%	190.93%
33	-15.07%	5.83%	-17.27%	6.98%	7.32%	10.34%	-60.00%	-25.00%	207.88%
34	-14.84%	-43.26%	-15.34%	-12.65%	-66.10%	-4.17%	-21.43%	60.00%	106.84%
35	-4.24%	51.18%	-9.21%	1.69%	-5.48%	7.70%	144.44%	248.24%	124.13%
36	-9.83%	21.96%	-14.19%	2.78%	4.21%	18.39%	-57.14%	405.26%	150.64%
37	-6.82%	59.85%	-8.47%	-16.53%	-17.19%	-12.72%	100.00%	156.82%	55.05%
38	6.51%	113.13%	0.19%	54.55%	-2.50%	37.02%	50.00%	133.33%	229.55%
39	-4.86%	75.00%	-7.94%	10.34%	-42.50%	-12.79%	-50.00%	318.18%	278.26%
40	-12.04%	57.14%	-14.79%	62.79%	-22.22%	45.71%	33.33%	660.00%	237.91%
41	-4.33%	39.05%	-6.78%	-25.86%	-2.94%	16.07%	166.67%	1000.00%	277.70%
42	-8.12%	20.88%	-10.05%	-26.26%	-39.81%	33.76%	-55.56%	327.27%	117.64%
43	-6.03%	64.17%	-9.32%	18.70%	-2.50%	1.96%	0.00%	511.11%	263.93%
44	-8.34%	-7.53%	-9.67%	0.00%	-16.13%	-33.33%	-50.00%	650.00%	109.18%
45	-2.17%	25.35%	-5.48%	45.93%	-2.94%	5.33%	400.00%	228.57%	242.41%
46	4.53%	67.88%	1.18%	12.86%	-44.74%	12.73%	600.00%	257.14%	320.89%
47	-6.81%	88.70%	-10.23%	121.49%	-59.38%	-5.71%	-100.00%	233.33%	149.05%
48	-4.25%	59.06%	-8.46%	-1.25%	6.25%	52.63%	86.67%	403.33%	186.18%
49	-1.81%	46.20%	-5.42%	3.79%	-50.00%	-13.85%	0.00%	750.00%	300.00%
50	-0.42%	70.00%	-5.10%	0.27%	21.88%	-9.61%	950.00%	169.77%	258.17%
51	10.40%	94.65%	3.43%	18.19%	13.39%	27.34%	50.00%	302.17%	231.55%
52	6.30%	265.81%	-7.20%	496.35%	100.00%	18.92%	-60.00%	50.00%	366.94%
53	-3.78%	65.63%	-6.51%	17.07%	-53.66%	-22.22%	100.00%	212.50%	328.24%
54	-8.96%	1.33%	-10.90%	14.29%	13.64%	76.92%	-33.33%	340.00%	203.79%

55	-4.17%	29.23%	-7.09%	2.36%	-50.00%	-66.67%		340.00%	214.36%
56	-4.90%	49.67%	-8.78%	-8.75%	25.93%	-14.43%	inf	230.77%	212.41%
57	-2.41%	34.83%	-5.24%	-8.54%	-32.35%	55.88%	100.00%	833.33%	227.78%
58	-3.85%	30.00%	-6.88%	-27.66%	-29.79%	8.93%	-100.00%	533.33%	225.23%
59	15.06%	98.65%	7.86%	31.06%	-40.35%	52.48%	16.67%	1850.00%	327.73%
60	12.52%	88.95%	5.32%	28.17%	-12.77%	25.17%	166.67%	238.89%	250.64%
61	7.51%	30.22%	-2.19%	13.77%	28.89%	53.02%	20.00%	269.57%	143.15%
62	28.62%	123.71%	15.87%	59.54%	29.73%	141.35%	133.33%	481.25%	263.78%
63	17.50%	72.42%	7.78%	17.85%	36.59%	70.81%	-28.57%	687.50%	160.57%
64	14.96%	76.74%	6.24%	36.06%	75.86%	90.59%	42.86%	222.22%	198.69%
65	14.79%	59.83%	5.87%	0.83%	-7.32%	58.36%	-93.75%	127.27%	159.38%
66	4.78%	51.95%	-0.89%	-13.66%	-12.20%	25.19%	-41.67%	726.67%	199.68%
67	4.26%	107.50%	-2.42%	2.27%	-9.09%	7.77%	0.00%	315.79%	162.29%

¹American Indian and Alaska Native Alone, not Latino

²Native Hawaiian and Pacific Islander Alone, not Latino

Variable Definitions

District shapefiles were retrieved from the Redistricting Data Hub, All About Redistricting, and the U.S. Census. The list of variables below can be found in the P1 and P2 table of the PL 94-171. Data was retrieved from the Redistricting Data Hub processed legacy file of the PL 94-171.

Variable Name in Report	Census Variable Reference
Total Population	P0010001
Hispanic or Latino Origin	P0020002
White Alone, not Latino	P0020005
African American Alone, not Latino	P0020006
American Indian and Alaska Native Alone, not Latino	P0020007
Asian Alone, not Latino	P0020008
Native Hawaiian and Pacific Islander Alone, not Latino	P0020009
Other Alone, not Latino	P0020010
Two or More, not Latino	P0020011