

HAYSTAQ DNA

Vermont

Overview	2
Congressional	2
State Senate	2
Total Population	3
Population by Race and Ethnicity	5
State House	11
Total Population	11
Population by Race and Ethnicity	16
Central Region	20
Northern Region	25
Southern Region	30
Bennington	35
Burlington	40
Rutland	45
Variable Definitions	60

Overview

Overall, Vermont added 17,340 people to their population, experiencing an increase of 2.77% between 2010 and 2020. Vermont's population remained largely stagnant but saw pockets of growth near its cities and areas of decline in smaller towns along the state border. Since there was growth around its largest cities and declines in smaller urban areas, as well as growth in some rural areas, Vermont does not fully align with the general national trend of movement from rural to urban/suburban areas.

The White population declined by 2.88% over the decade in accordance with its national patterns of decline. The White population declined in most districts and did not grow at a similar rate to other communities in urban areas throughout the state. The *overall share* of the population is now 89.14% compared to 94.32% in the 2010 Census.

The Latino population grew by 68.33% over the decade across all areas of the state, though increases were concentrated slightly in the central southern region and across the middle of the state around Morristown. The *overall share* of the population is now 2.41% compared to 1.47% in the 2010 Census.

The Asian population increased by 45.42% over the decade across the state, though most significantly around Burlington in Senate-CHI in the northwest. Pockets of decline exist throughout the state, though the most significant areas of decline are centered in the northern region of the state. The *overall share* of the population is now 1.78% compared to 1.26% in the 2010 Census.

Over the decade, the 45.53% growth of the African American population was spread throughout the state. Significant declines occurred in the northeast and west. The *overall share* of the population decreased to 0.95% from 1.35% in the 2010 Census.

Congressional

Vermont has one at-large congressional district.

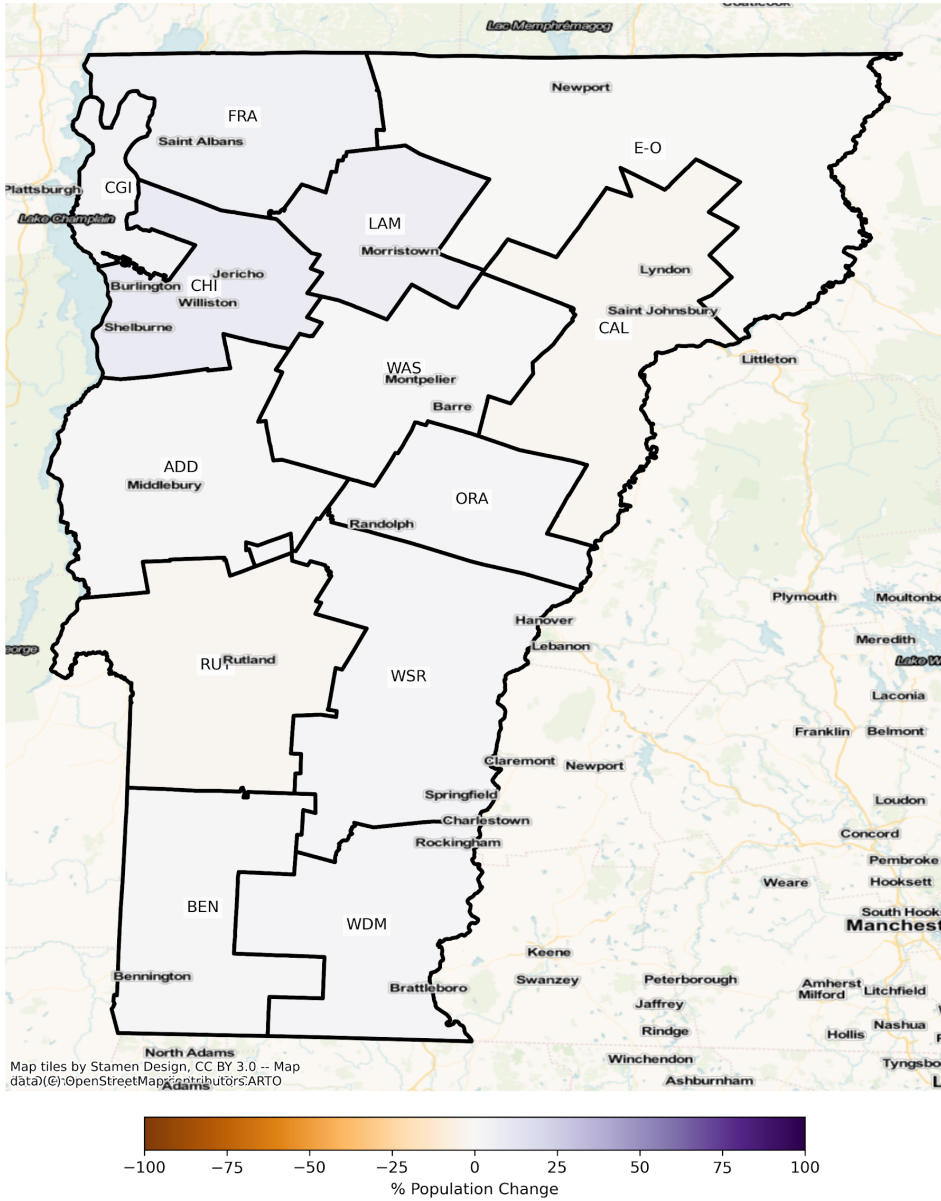
State Senate

The charts below display the percent change in population from 2010 to 2020 for the listed group. Please note that the color bars are fixed to be from -100% to 100% and these maps are

displayed in brown to purple. If the percent change in population was outside of this range, the color scheme changes to red to green to indicate a change.

Total Population

VT State Senate Districts
Population % Change from 2010 to 2020
Total Population

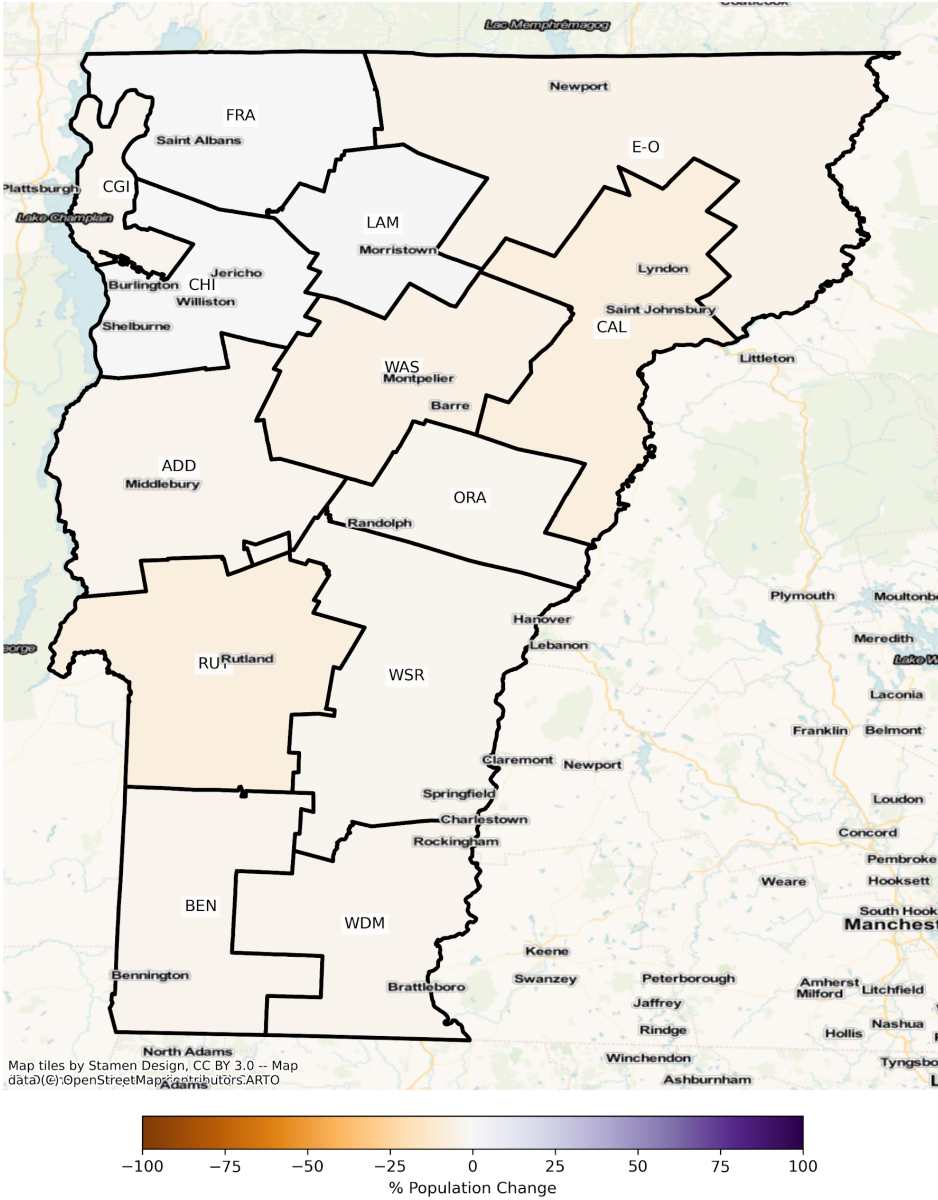


Total Population from 2010 to 2020 at the State Senate District Level

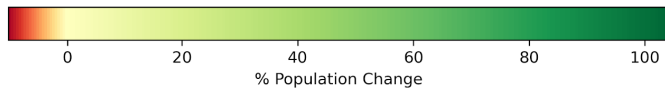
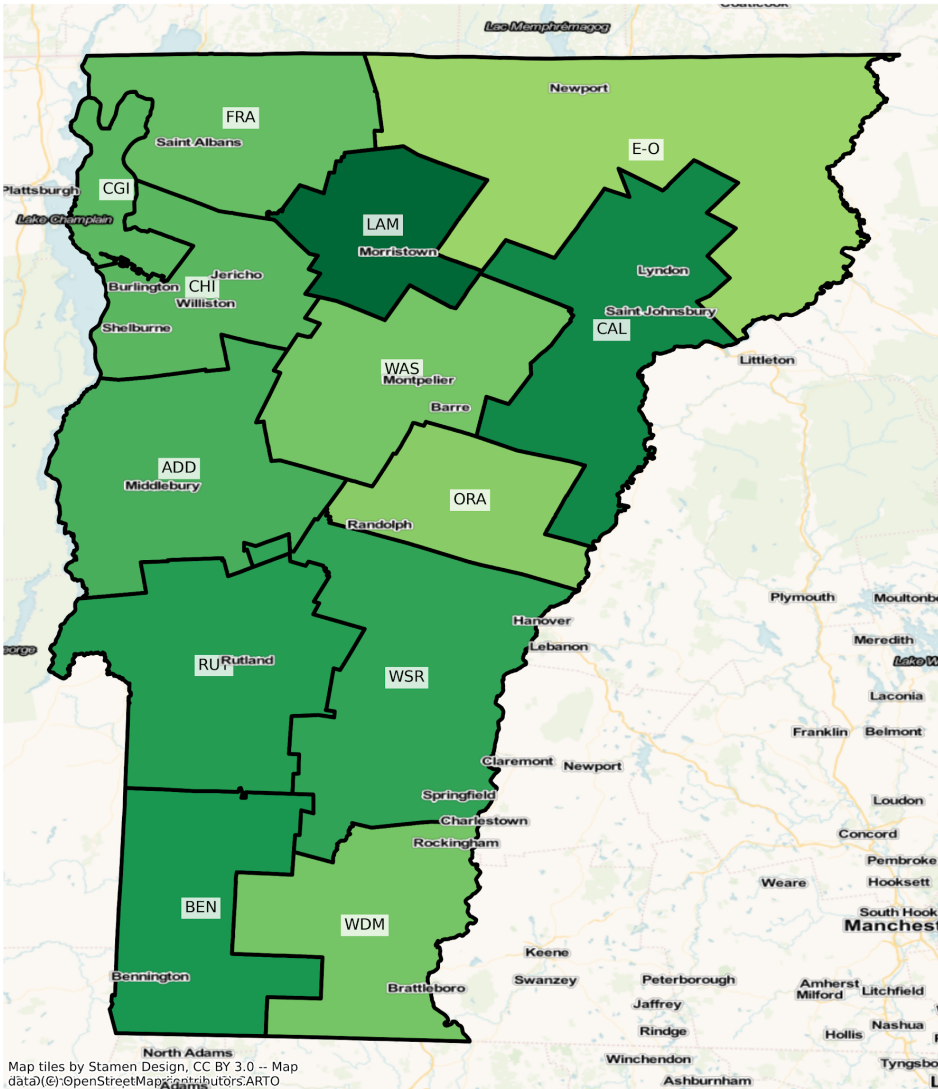
DISTRICT	Total Population 2010	Total Population 2020	Total Population % Change
ADD	38789	39365	1.48%
BEN	39012	39611	1.54%
CAL	40063	39159	-2.26%
CGI	21362	22048	3.21%
CHI	138187	149482	8.17%
E-O	38715	38500	-0.56%
FRA	46235	48540	4.99%
LAM	22799	24257	6.40%
ORA	20017	20336	1.59%
RUT	60379	59132	-2.07%
WAS	59534	59797	0.44%
WDM	40861	41718	2.10%
WSR	59657	61005	2.26%

Population by Race and Ethnicity

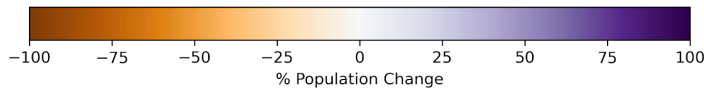
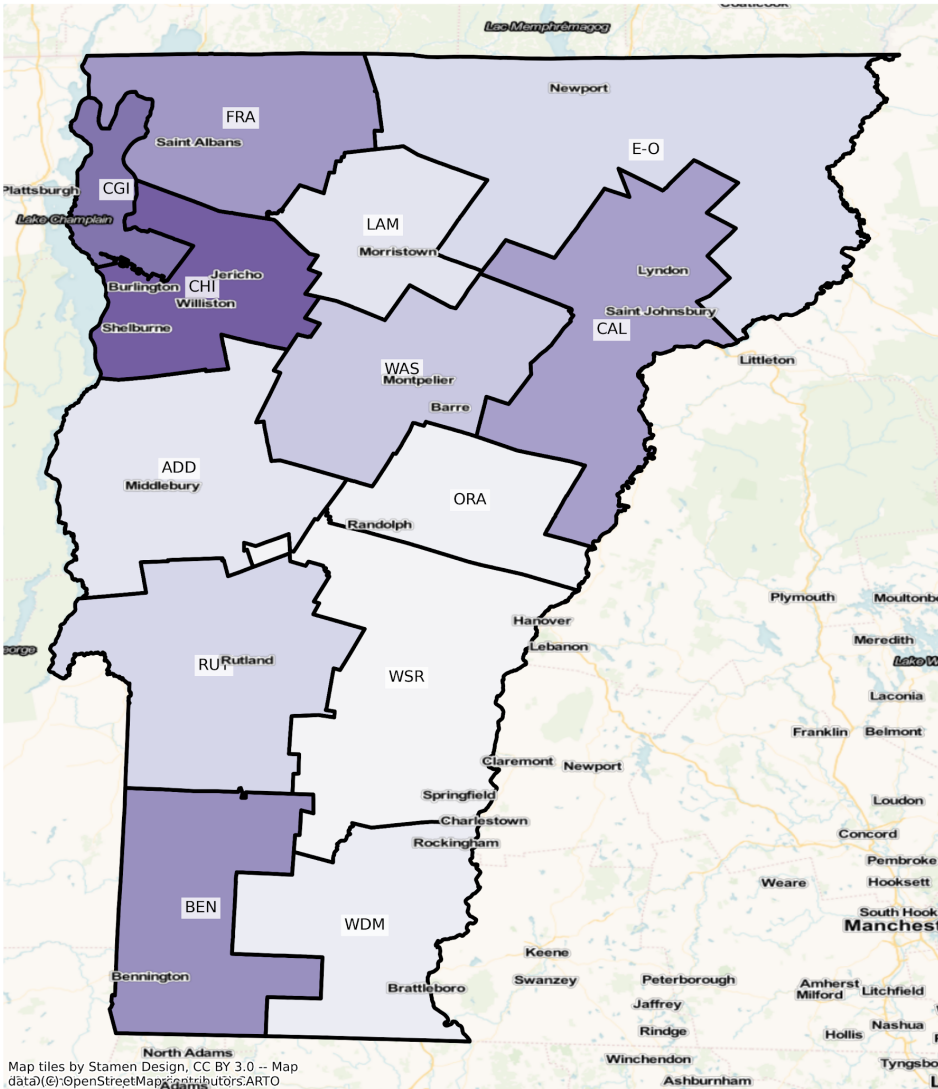
VT State Senate Districts
 Population % Change from 2010 to 2020
 Ethnicity: Not Latino White alone



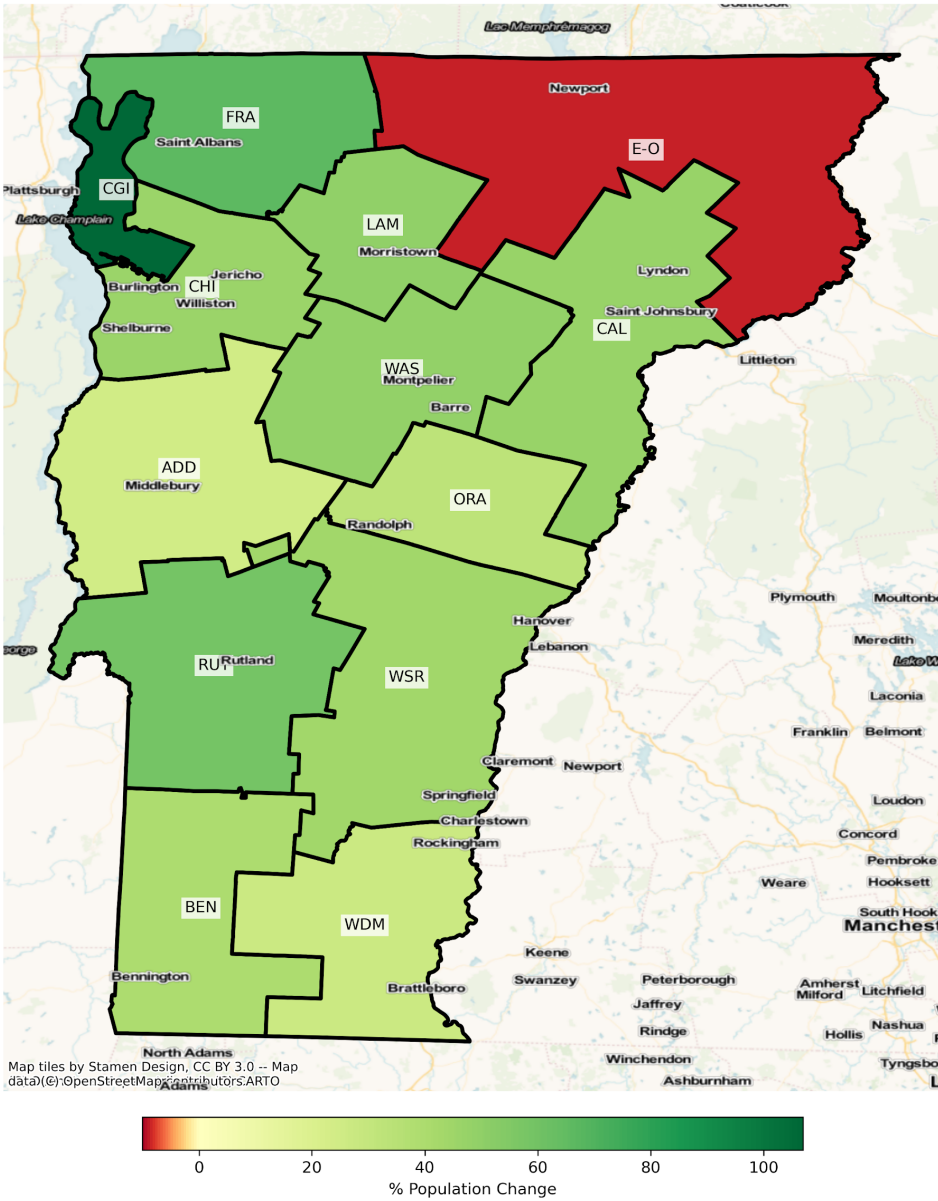
VT State Senate Districts
 Population % Change from 2010 to 2020
 Ethnicity: Hispanic or Latino



VT State Senate Districts
 Population % Change from 2010 to 2020
 Ethnicity: Not Latino Asian alone



VT State Senate Districts
 Population % Change from 2010 to 2020
 Ethnicity: Not Latino African American alone



2010 Population by Race and Ethnicity at the State Senate District Level

DISTRICT	Total Population	Hispanic or Latino Origin	White Alone, not Latino	African American Alone, not Latino	AIAN Alone, not Latino ¹	Asian Alone, not Latino	NHPI Alone, not Latino ²	Other Alone, not Latino	Two or More, not Latino
ADD	38789	700	36551	280	77	540	5	35	601
BEN	39012	554	37341	295	76	276	15	21	434
CAL	40063	401	38456	172	155	292	4	52	531
CGI	21362	320	20070	216	71	368	9	8	300
CHI	138187	2579	125646	2965	330	4002	36	167	2462
E-O	38715	415	37175	186	188	126	10	19	596
FRA	46235	553	43810	190	494	216	10	12	950
LAM	22799	311	21799	137	78	120	3	29	322
ORA	20017	212	19269	85	50	95	0	12	294
RUT	60379	671	58138	309	135	368	9	29	720
WAS	59534	995	56473	411	126	495	11	56	967
WDM	40861	773	38370	374	99	436	16	58	735
WSR	59657	724	56997	323	142	540	12	39	880

¹American Indian and Alaska Native Alone, not Latino

²Native Hawaiian and Pacific Islander Alone, not Latino

2020 Population by Race and Ethnicity at the State Senate District Level

DISTRICT	Total Population	Hispanic or Latino Origin	White Alone, not Latino	African American Alone, not Latino	AIAN Alone, not Latino ¹	Asian Alone, not Latino	NHPI Alone, not Latino ²	Other Alone, not Latino	Two or More, not Latino
ADD	39365	1193	35270	350	87	604	10	135	1716
BEN	39611	1015	35966	413	67	412	6	123	1609
CAL	39159	761	35629	253	129	421	19	155	1792
CGI	22048	528	19392	447	38	586	12	59	986
CHI	149482	4272	126467	4340	259	6623	37	692	6792
E-O	38500	601	35628	170	260	151	7	70	1613

FRA	48540	897	43899	316	462	316	15	119	2516
LAM	24257	635	21997	205	86	135	1	119	1079
ORA	20336	320	18674	113	78	100	3	83	965
RUT	59132	1207	53748	490	143	448	14	167	2915
WAS	59797	1569	53695	611	135	632	23	319	2813
WDM	41718	1219	37153	477	88	467	7	229	2078
WSR	61005	1283	55578	464	154	555	16	291	2664

¹American Indian and Alaska Native Alone, not Latino

²Native Hawaiian and Pacific Islander Alone, not Latino

Percent Change of Population from 2010 to 2020 by Race and Ethnicity at State Senate District Level

DISTRICT	Total Population	Hispanic or Latino Origin	White Alone, not Latino	African American Alone, not Latino	AIAN Alone, not Latino ¹	Asian Alone, not Latino	NHPI Alone, not Latino ²	Other Alone, not Latino	Two or More, not Latino
ADD	1.48%	70.43%	-3.50%	25.00%	12.99%	11.85%	100.00%	285.71%	185.52%
BEN	1.54%	83.21%	-3.68%	40.00%	-11.84%	49.28%	-60.00%	485.71%	270.74%
CAL	-2.26%	89.78%	-7.35%	47.09%	-16.77%	44.18%	375.00%	198.08%	237.48%
CGI	3.21%	65.00%	-3.38%	106.94%	-46.48%	59.24%	33.33%	637.50%	228.67%
CHI	8.17%	65.65%	0.65%	46.37%	-21.52%	65.49%	2.78%	314.37%	175.87%
E-O	-0.56%	44.82%	-4.16%	-8.60%	38.30%	19.84%	-30.00%	268.42%	170.64%
FRA	4.99%	62.21%	0.20%	66.32%	-6.48%	46.30%	50.00%	891.67%	164.84%
LAM	6.40%	104.18%	0.91%	49.64%	10.26%	12.50%	-66.67%	310.34%	235.09%
ORA	1.59%	50.94%	-3.09%	32.94%	56.00%	5.26%	inf	591.67%	228.23%
RUT	-2.07%	79.88%	-7.55%	58.58%	5.93%	21.74%	55.56%	475.86%	304.86%
WAS	0.44%	57.69%	-4.92%	48.66%	7.14%	27.68%	109.09%	469.64%	190.90%
WDM	2.10%	57.70%	-3.17%	27.54%	-11.11%	7.11%	-56.25%	294.83%	182.72%
WSR	2.26%	77.21%	-2.49%	43.65%	8.45%	2.78%	33.33%	646.15%	202.73%

¹American Indian and Alaska Native Alone, not Latino

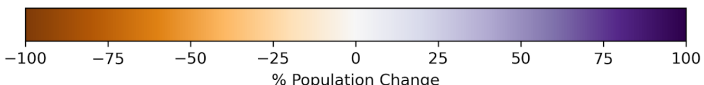
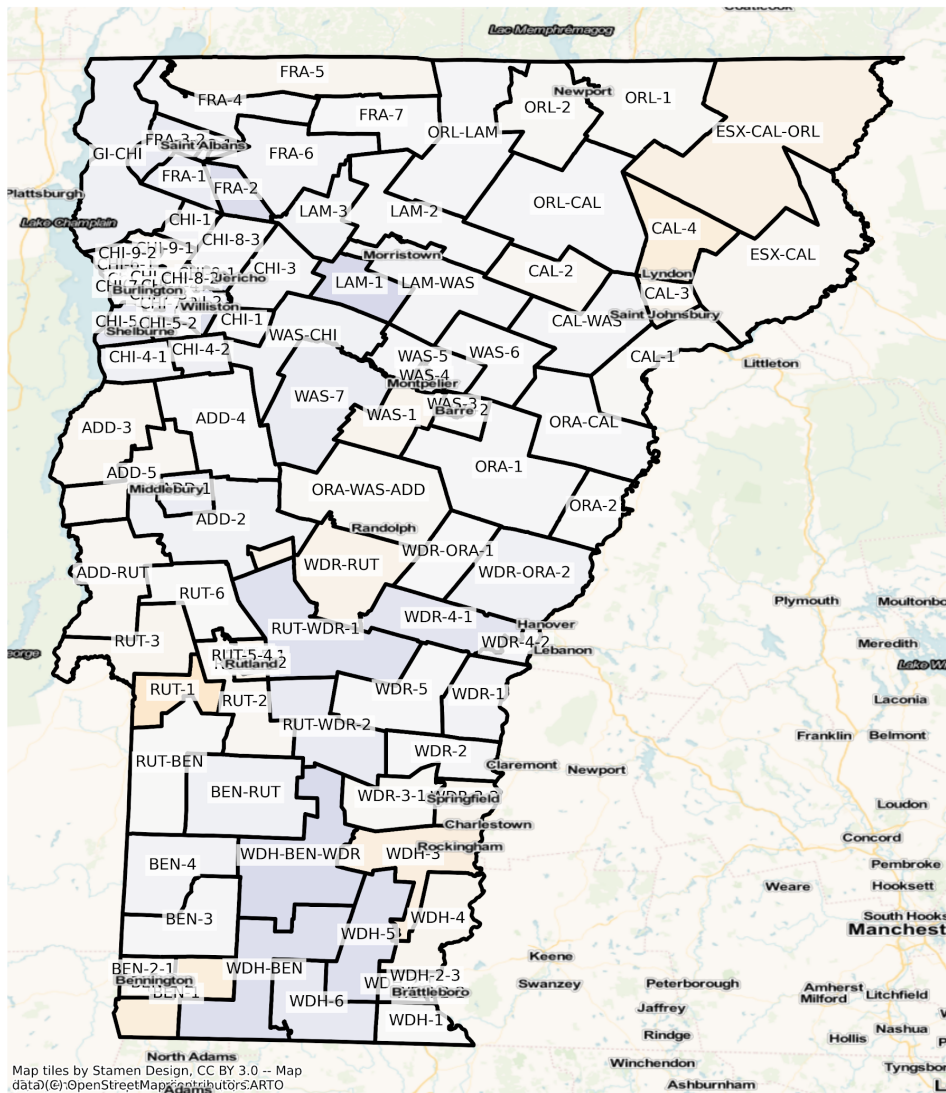
²Native Hawaiian and Pacific Islander Alone, not Latino

State House

The charts below display the percent change in population from 2010 to 2020 for the listed group. Please note that the color bars are fixed to be from -100% to 100% and these maps are displayed in brown to purple. If the percent change in population was outside of this range, the color scheme changes to red to green to indicate a change.

Total Population

VT State House Districts
Population % Change from 2010 to 2020
Total Population



Total Population from 2010 to 2020 at the State House District Level

DISTRICT	Total Population 2010	Total Population 2020	Total Population % Change
ADD-1	8496	9152	7.72%
ADD-2	4496	4688	4.27%
ADD-3	7897	7667	-2.91%
ADD-4	8922	8953	0.35%
ADD-5	3778	3709	-1.83%
ADD-RUT	3990	3900	-2.26%
BEN-1	3951	3613	-8.55%
BEN-2-1	7997	7795	-2.53%
BEN-2-2	7767	7538	-2.95%
BEN-3	3840	3889	1.28%
BEN-4	7827	8102	3.51%
BEN-RUT	4130	4335	4.96%
CAL-1	4127	4088	-0.94%
CAL-2	4161	4091	-1.68%
CAL-3	7603	7364	-3.14%
CAL-4	8763	8055	-8.08%
CAL-WAS	4361	4493	3.03%
CHI-1	4081	4210	3.16%
CHI-2	8706	10091	15.91%
CHI-3	8024	8216	2.39%
CHI-4-1	3787	3970	4.83%
CHI-4-2	4363	4629	6.10%
CHI-5-1	3843	4261	10.88%
CHI-5-2	3975	4250	6.92%
CHI-6-1	8934	8974	0.45%
CHI-6-2	3879	4347	12.06%
CHI-6-3	8513	9179	7.82%
CHI-6-4	9706	9249	-4.71%
CHI-6-5	8623	8736	1.31%
CHI-6-6	3173	4507	42.04%

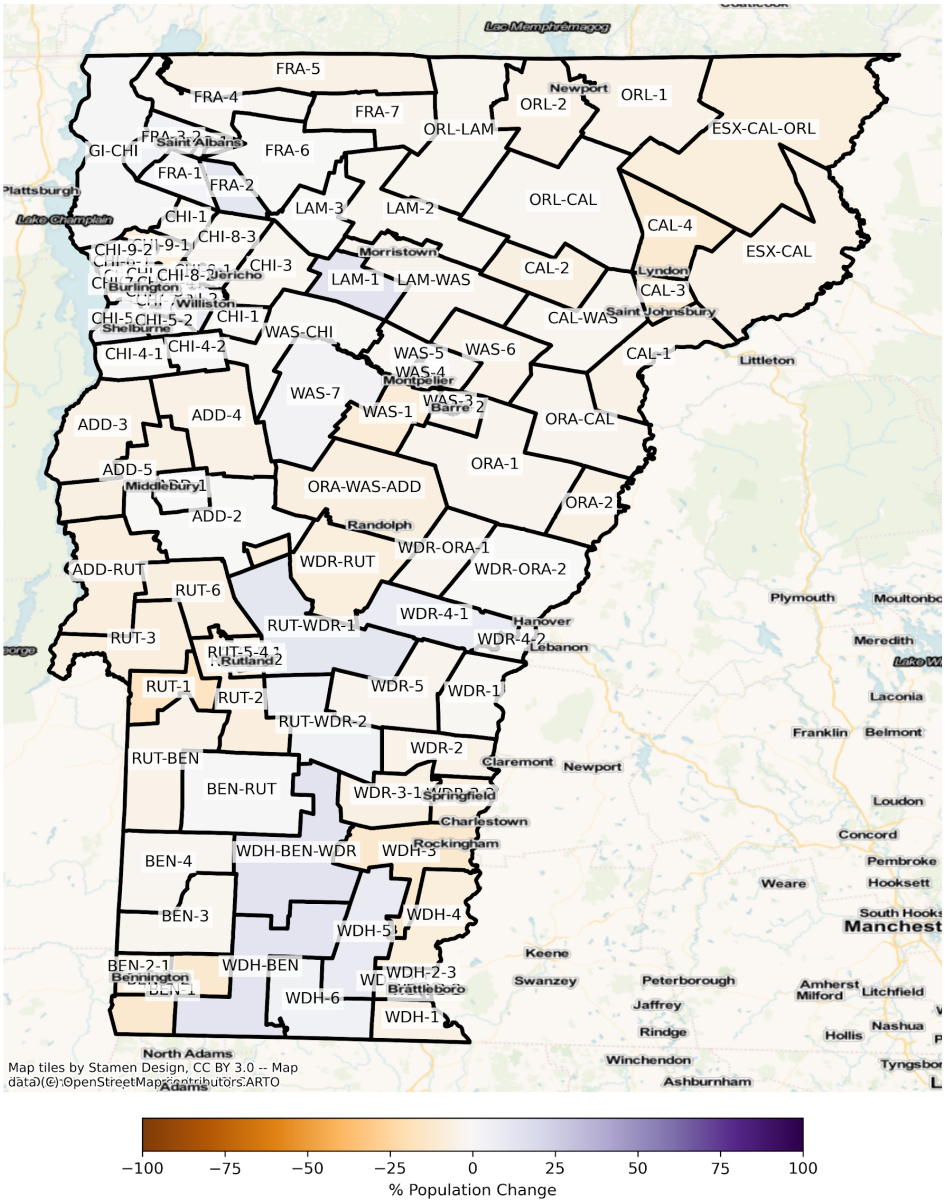
CHI-6-7	7533	8411	11.66%
CHI-7-1	4533	4627	2.07%
CHI-7-2	4299	5467	27.17%
CHI-7-3	4518	5572	23.33%
CHI-7-4	4554	4626	1.58%
CHI-8-1	8199	9402	14.67%
CHI-8-2	9063	10310	13.76%
CHI-8-3	4347	4424	1.77%
CHI-9-1	9012	8801	-2.34%
CHI-9-2	7378	8060	9.24%
CHI-10	9039	9341	3.34%
ESX-CAL	3754	3677	-2.05%
ESX-CAL-ORL	3969	3746	-5.62%
FRA-1	4515	4845	7.31%
FRA-2	4285	5024	17.25%
FRA-3-1	8583	9130	6.37%
FRA-3-2	4334	4735	9.25%
FRA-4	8561	8799	2.78%
FRA-5	8996	8775	-2.46%
FRA-6	4490	4659	3.76%
FRA-7	3982	3997	0.38%
GI-CHI	8283	8675	4.73%
LAM-1	4314	5223	21.07%
LAM-2	8423	8534	1.32%
LAM-3	4332	4507	4.04%
LAM-WAS	7987	8217	2.88%
ORA-1	8835	8966	1.48%
ORA-2	4417	4394	-0.52%
ORA-CAL	4404	4471	1.52%
ORA-WAS-ADD	8305	8204	-1.22%
ORL-1	8010	7919	-1.14%
ORL-2	8843	8753	-1.02%
ORL-CAL	8355	8550	2.33%
ORL-LAM	4510	4593	1.84%
RUT-1	3864	3377	-12.60%
RUT-2	8896	8707	-2.12%

RUT-3	8406	8157	-2.96%
RUT-4	4100	3935	-4.02%
RUT-5-1	4134	4116	-0.44%
RUT-5-2	3980	3936	-1.11%
RUT-5-3	4099	3984	-2.81%
RUT-5-4	4250	3779	-11.08%
RUT-6	7478	7449	-0.39%
RUT-BEN	4545	4538	-0.15%
RUT-WDR-1	4079	4709	15.44%
RUT-WDR-2	4256	4653	9.33%
WAS-1	9093	8746	-3.82%
WAS-2	7924	7923	-0.01%
WAS-3	9052	8491	-6.20%
WAS-4	7855	8074	2.79%
WAS-5	4380	4474	2.15%
WAS-6	4438	4480	0.95%
WAS-7	7598	8197	7.88%
WAS-CHI	8316	8669	4.24%
WDH-1	4327	4301	-0.60%
WDH-2-1	4230	4438	4.92%
WDH-2-2	3932	3907	-0.64%
WDH-2-3	3884	3839	-1.16%
WDH-3	7575	6992	-7.70%
WDH-4	7514	7304	-2.79%
WDH-5	4036	4701	16.48%
WDH-6	3912	4321	10.46%
WDH-BEN	3772	4409	16.89%
WDH-BEN-WDR	4355	5174	18.81%
WDR-1	8045	8349	3.78%
WDR-2	4192	4234	1.00%
WDR-3-1	4196	4144	-1.24%
WDR-3-2	9042	8720	-3.56%
WDR-4-1	3910	4414	12.89%
WDR-4-2	7906	8187	3.55%
WDR-5	4333	4333	0.00%
WDR-ORA-1	4057	4087	0.74%

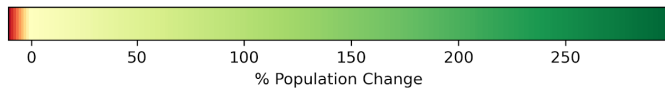
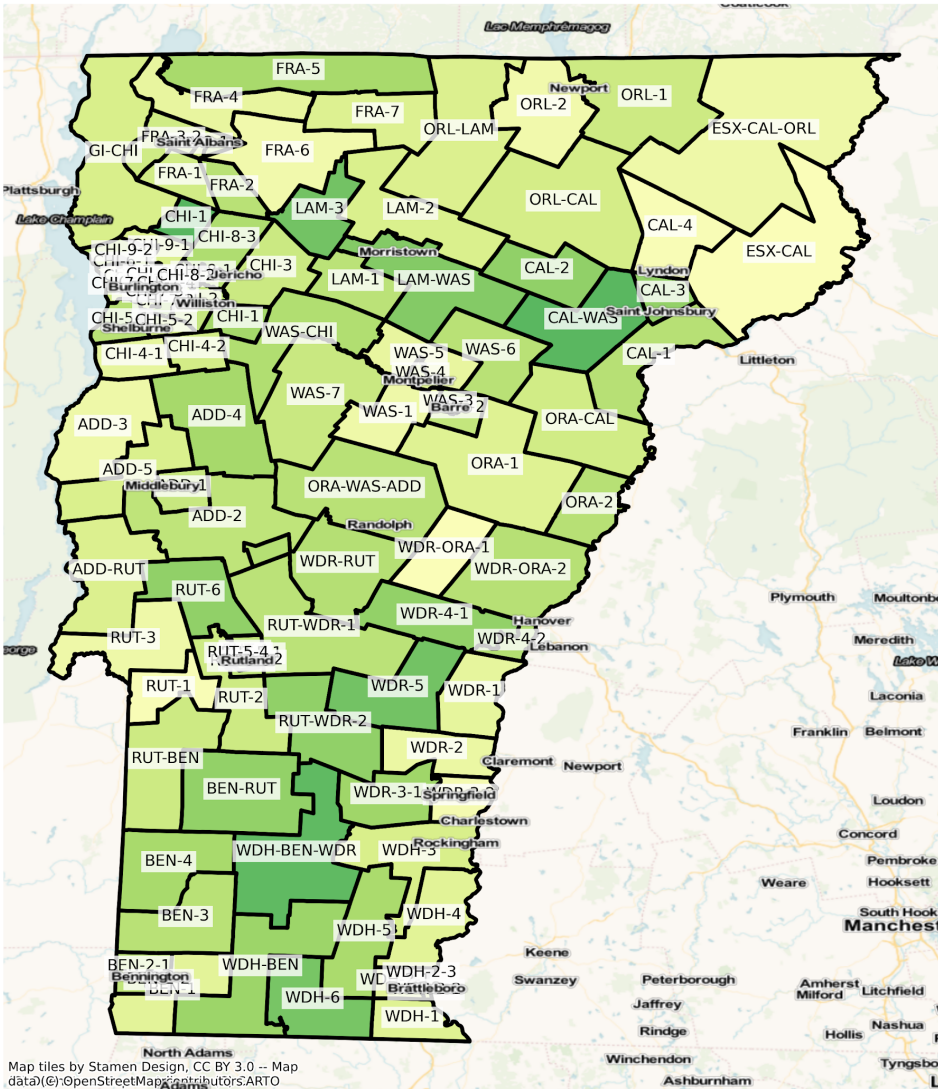
WDR-ORA-2	8553	8974	4.92%
WDR-RUT	4421	4243	-4.03%

Population by Race and Ethnicity

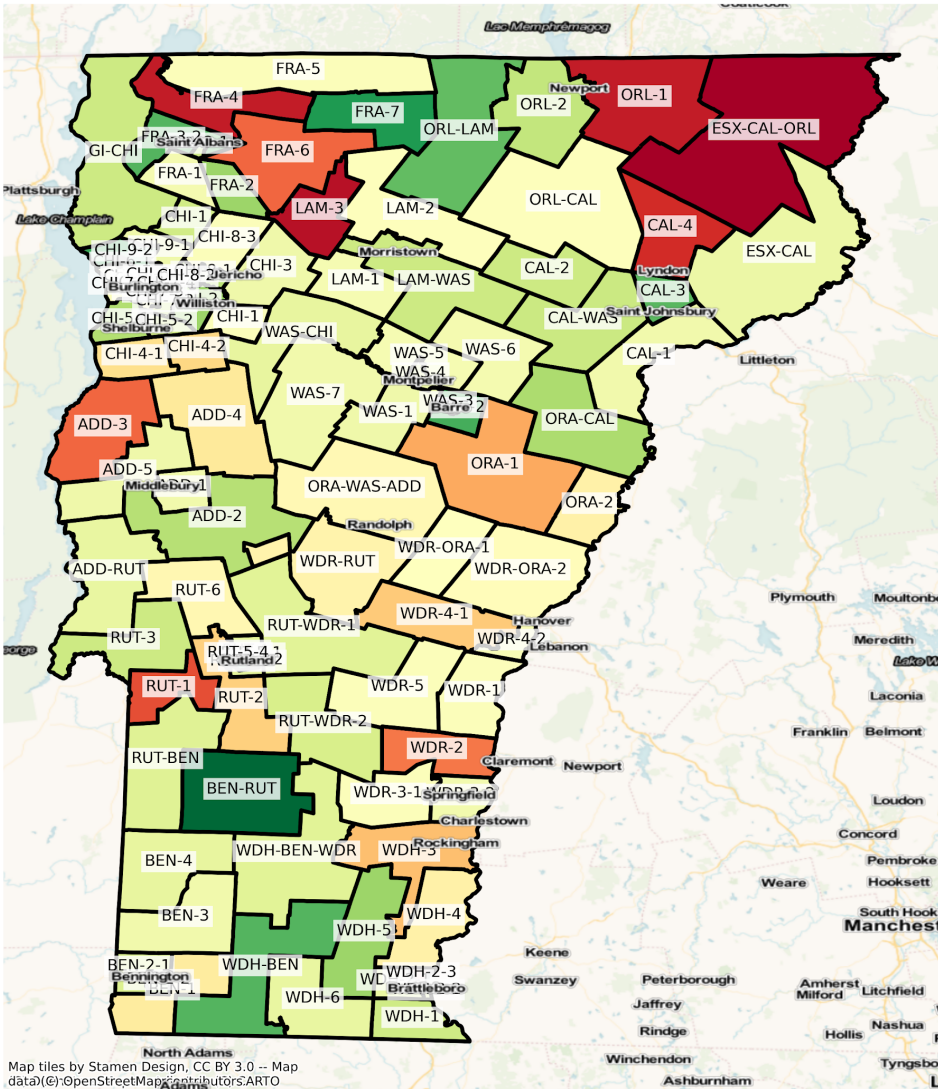
VT State House Districts
 Population % Change from 2010 to 2020
 Ethnicity: Not Latino White alone



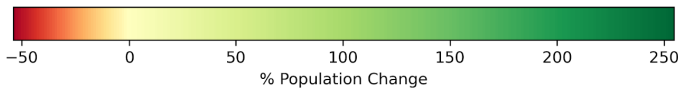
VT State House Districts
 Population % Change from 2010 to 2020
 Ethnicity: Hispanic or Latino



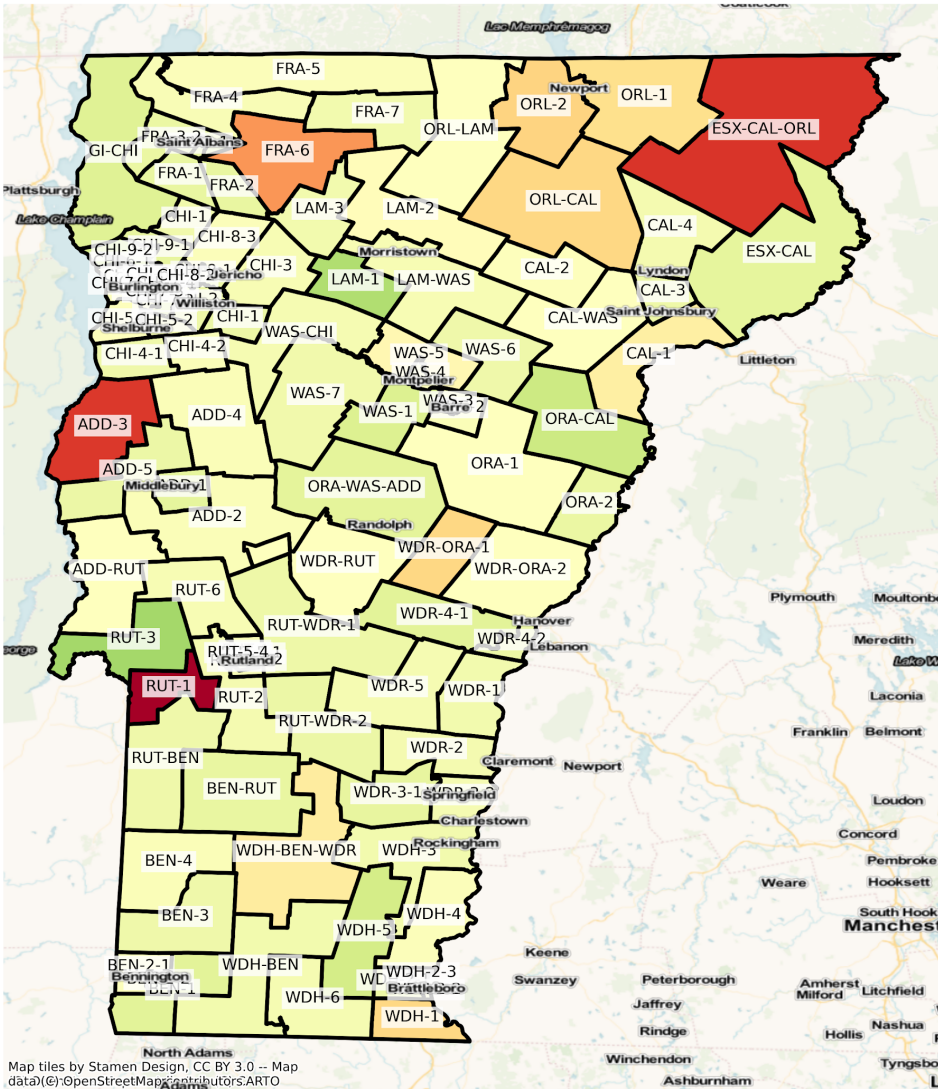
VT State House Districts
 Population % Change from 2010 to 2020
 Ethnicity: Not Latino Asian alone



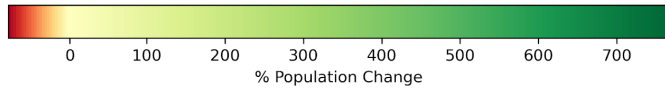
Map tiles by Stamen Design, CC BY 3.0 -- Map data (c) OpenStreetMap contributors, ARTO



VT State House Districts
 Population % Change from 2010 to 2020
 Ethnicity: Not Latino African American alone

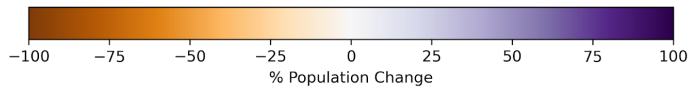
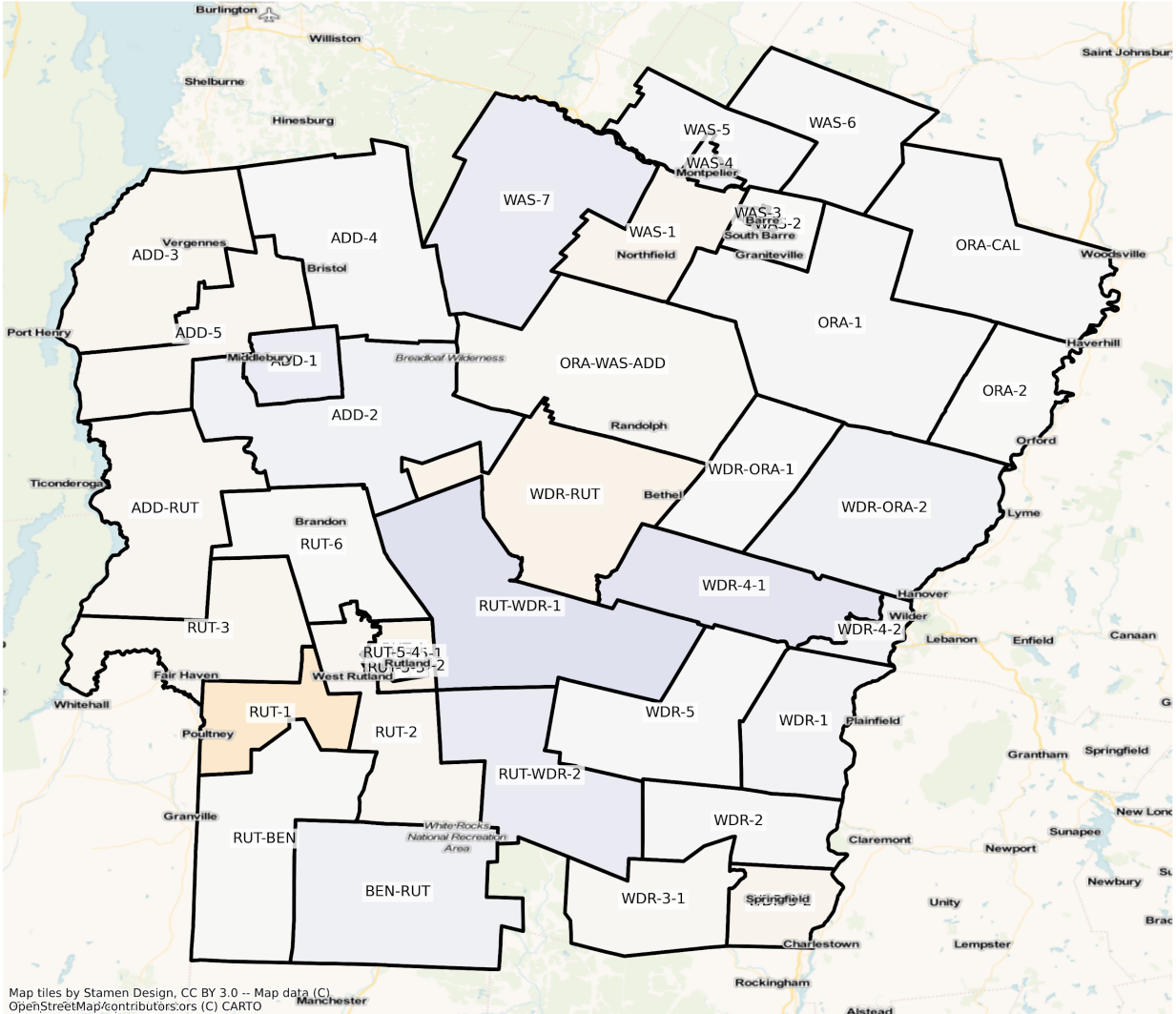


Map tiles by Stamen Design, CC BY 3.0 -- Map data (c) OpenStreetMap contributors, ARTO

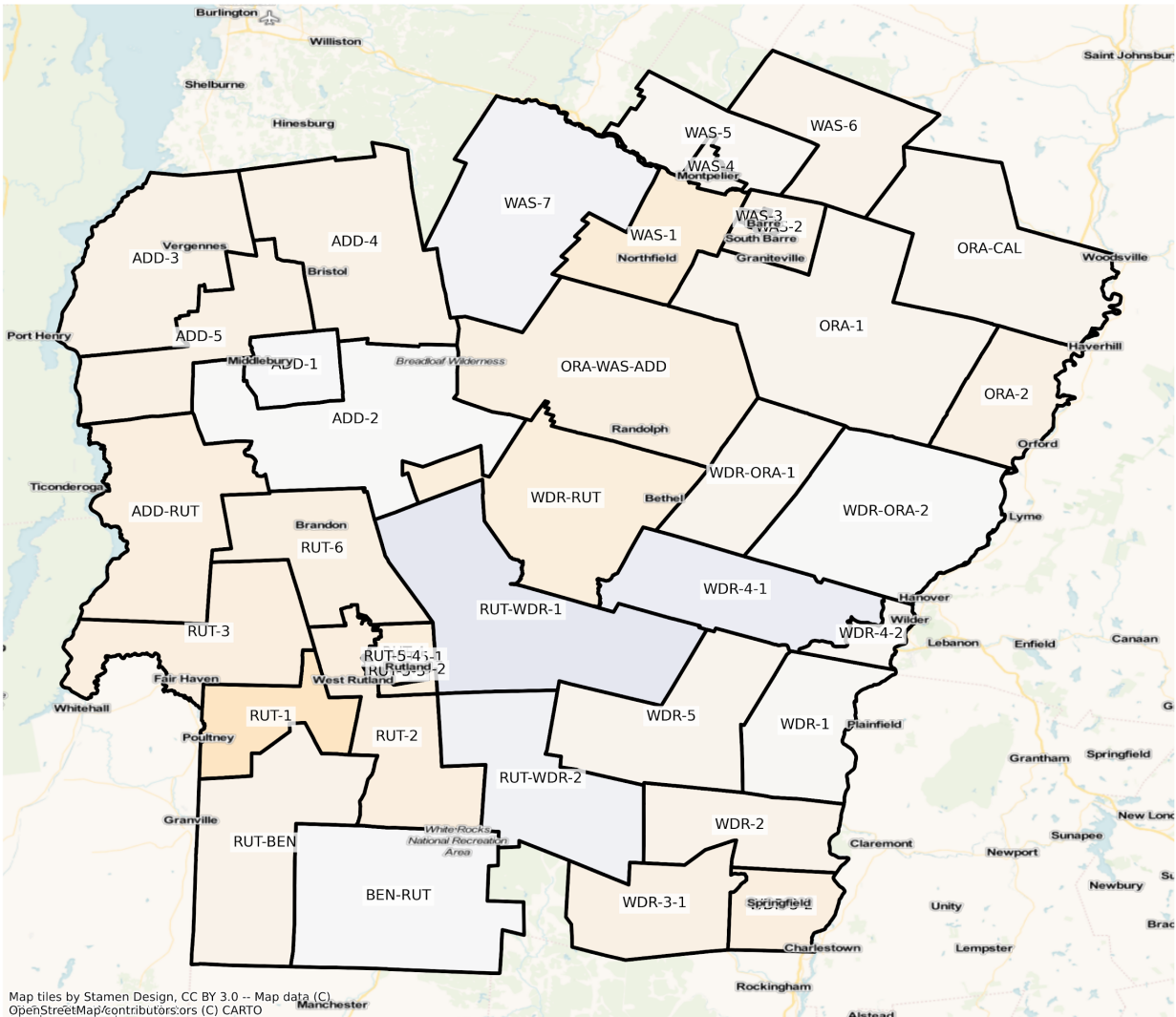


Central Region

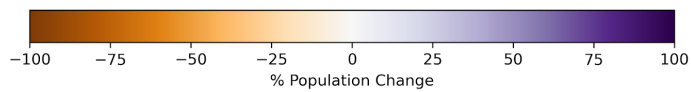
VT Central Region State House Districts
Population % Change from 2010 to 2020
Total Population



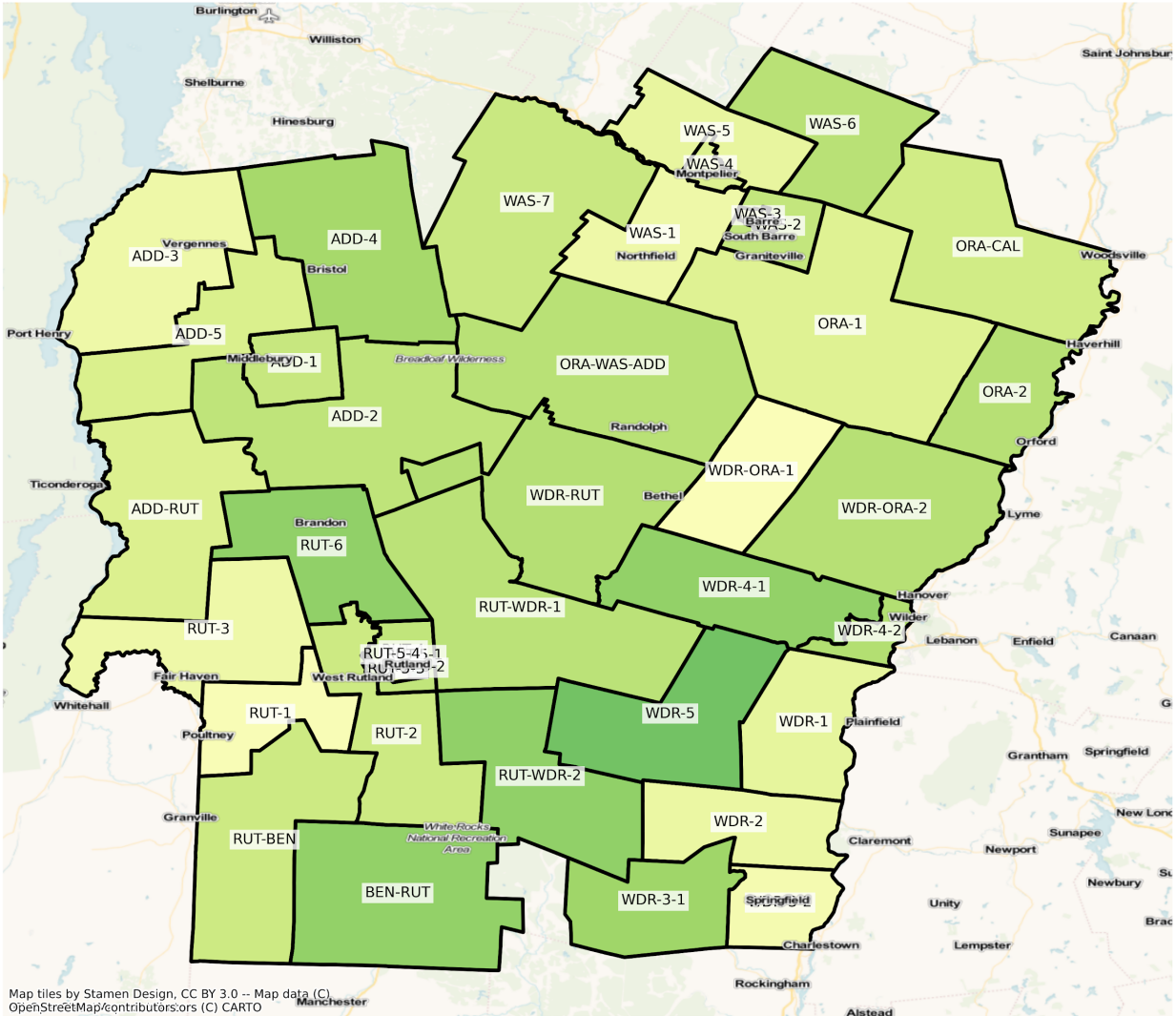
VT Central Region State House Districts
 Population % Change from 2010 to 2020
 Ethnicity: Not Latino White alone



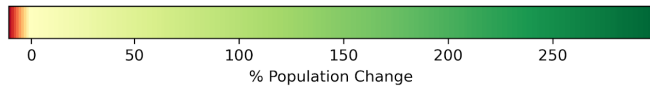
Map tiles by Stamen Design, CC BY 3.0 -- Map data (C)
 OpenStreetMap/contributors/ors (C) CARTO



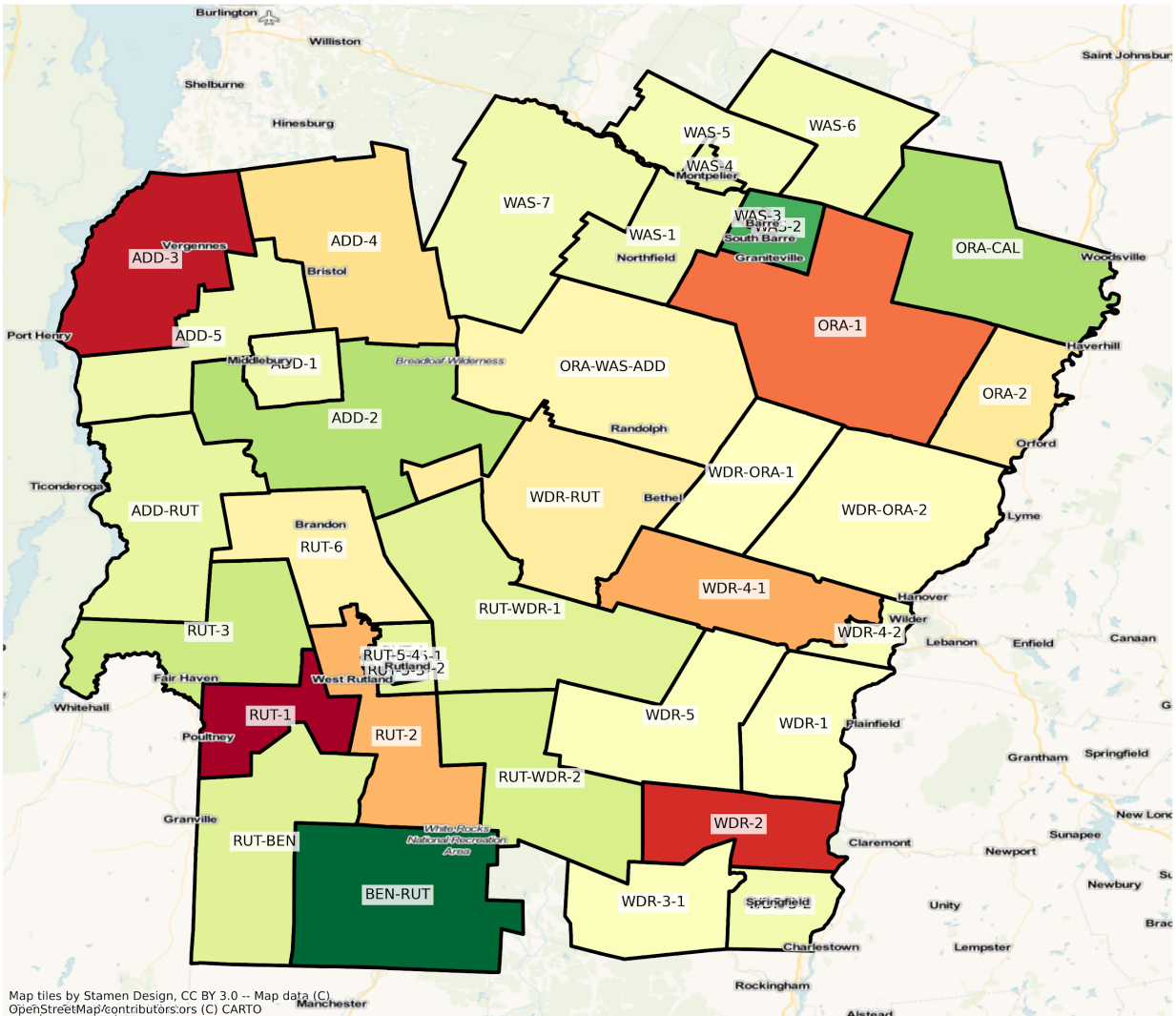
VT Central Region State House Districts
 Population % Change from 2010 to 2020
 Ethnicity: Hispanic or Latino



Map tiles by Stamen Design, CC BY 3.0 -- Map data (C)
 OpenStreetMap/contributors/ors (C) CARTO



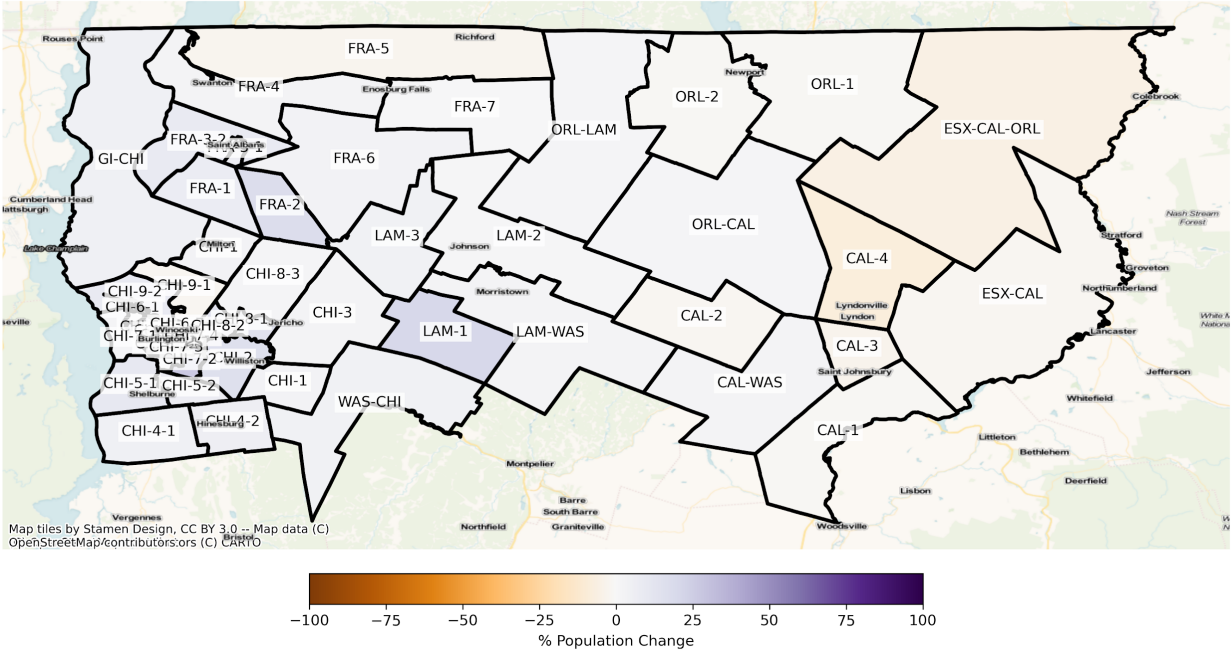
VT Central Region State House Districts
 Population % Change from 2010 to 2020
 Ethnicity: Not Latino Asian alone



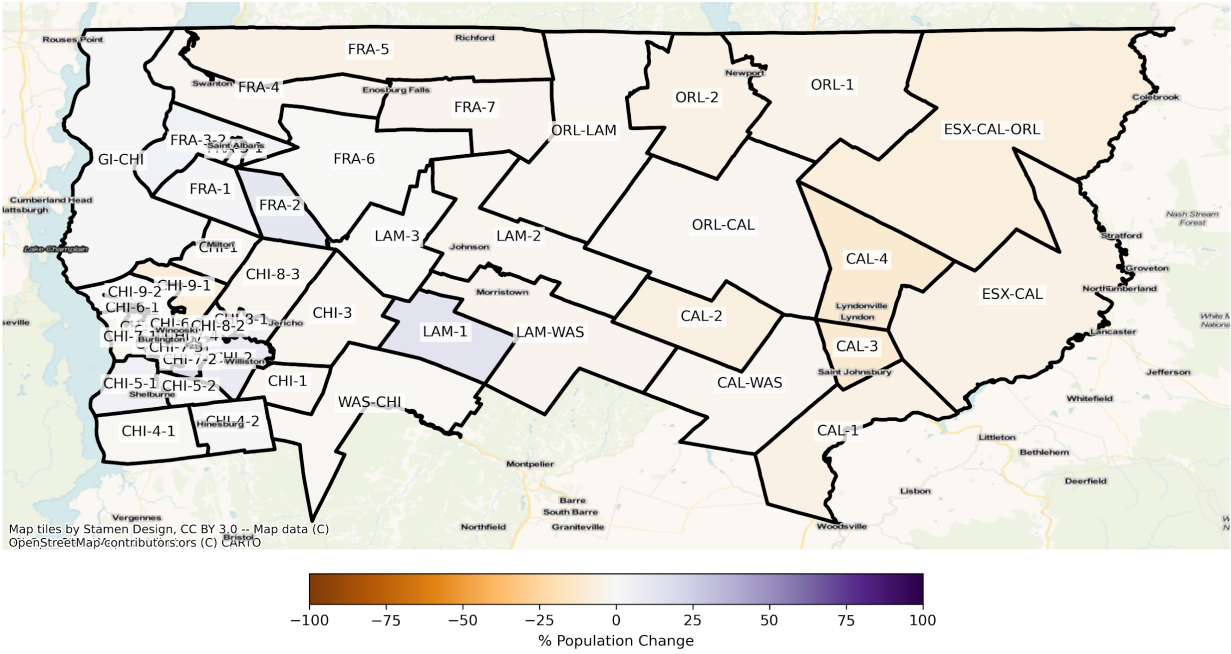
Map tiles by Stamen Design, CC BY 3.0 -- Map data (C)
 OpenStreetMap/contributors/ors (C) CARTO

Northern Region

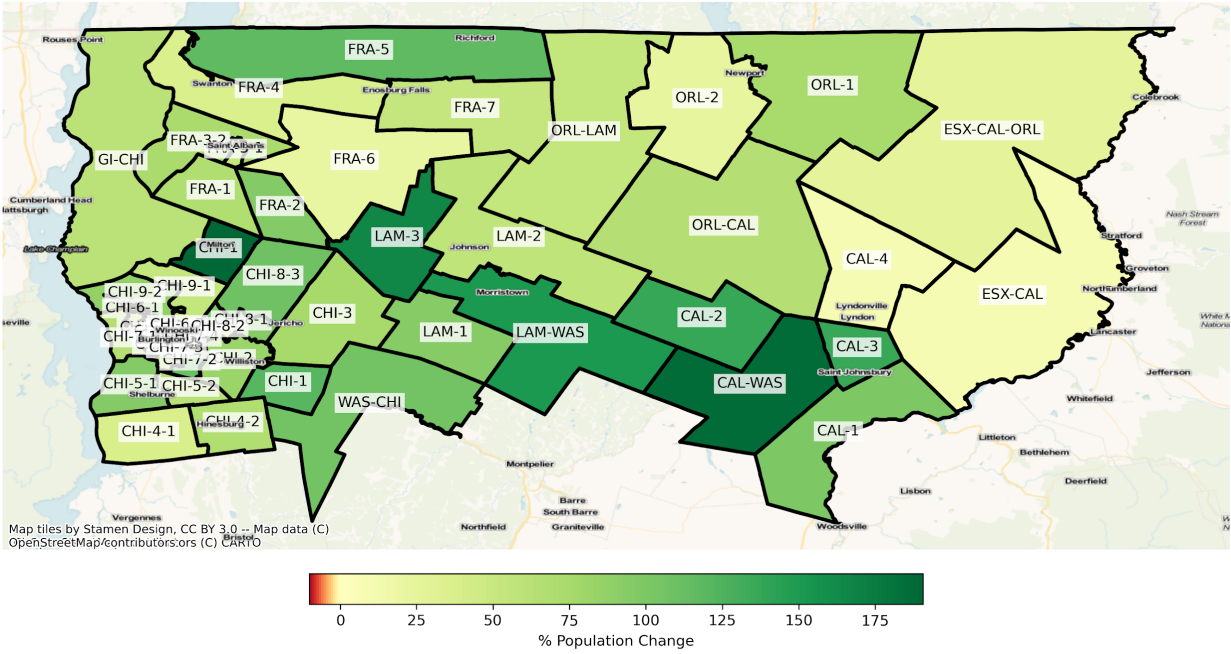
VT Northern Region State House Districts
Population % Change from 2010 to 2020
Total Population



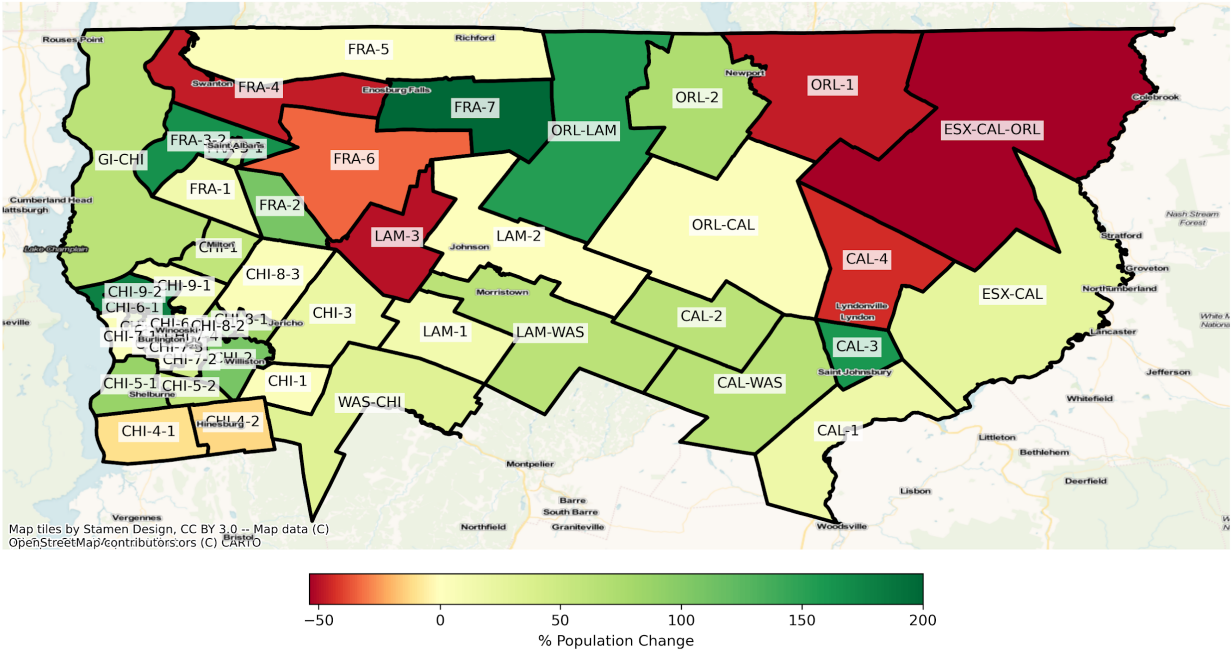
VT Northern Region State House Districts
 Population % Change from 2010 to 2020
 Ethnicity: Not Latino White alone



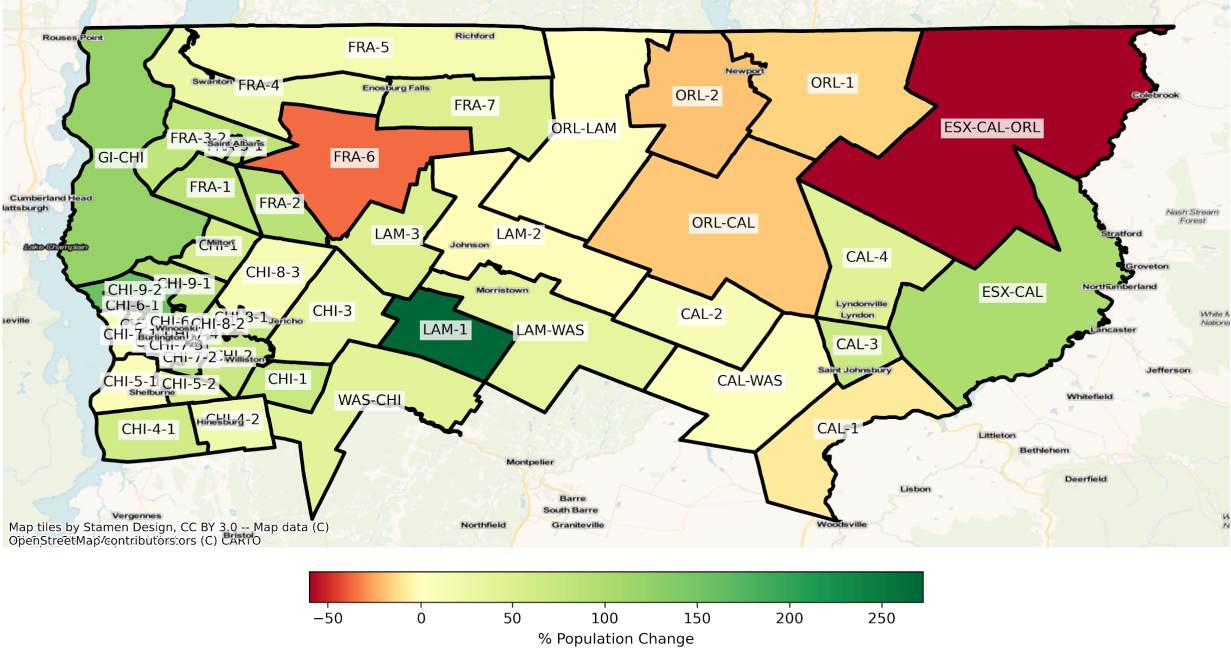
VT Northern Region State House Districts
 Population % Change from 2010 to 2020
 Ethnicity: Hispanic or Latino



VT Northern Region State House Districts
 Population % Change from 2010 to 2020
 Ethnicity: Not Latino Asian alone

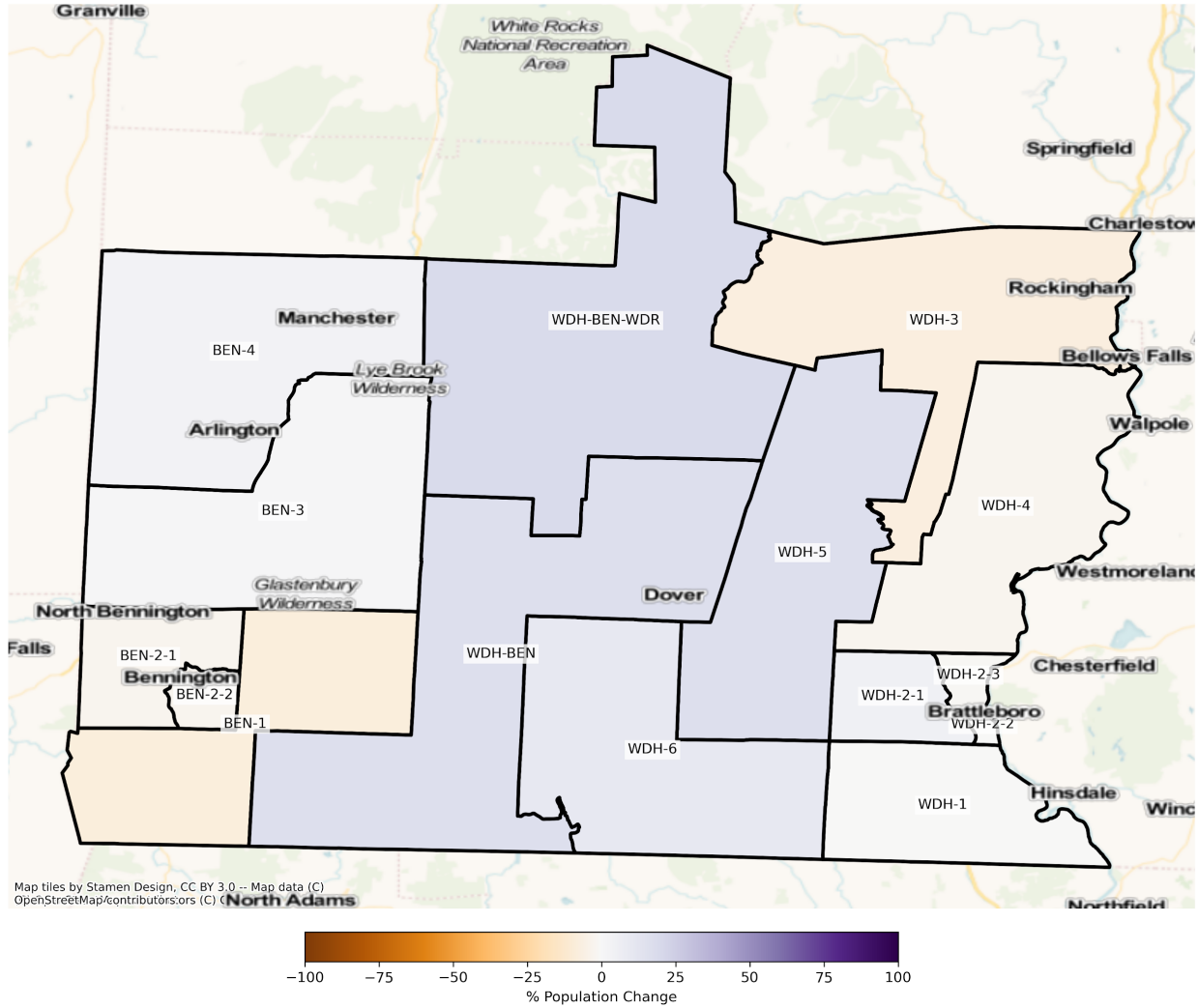


VT Northern Region State House Districts
 Population % Change from 2010 to 2020
 Ethnicity: Not Latino African American alone

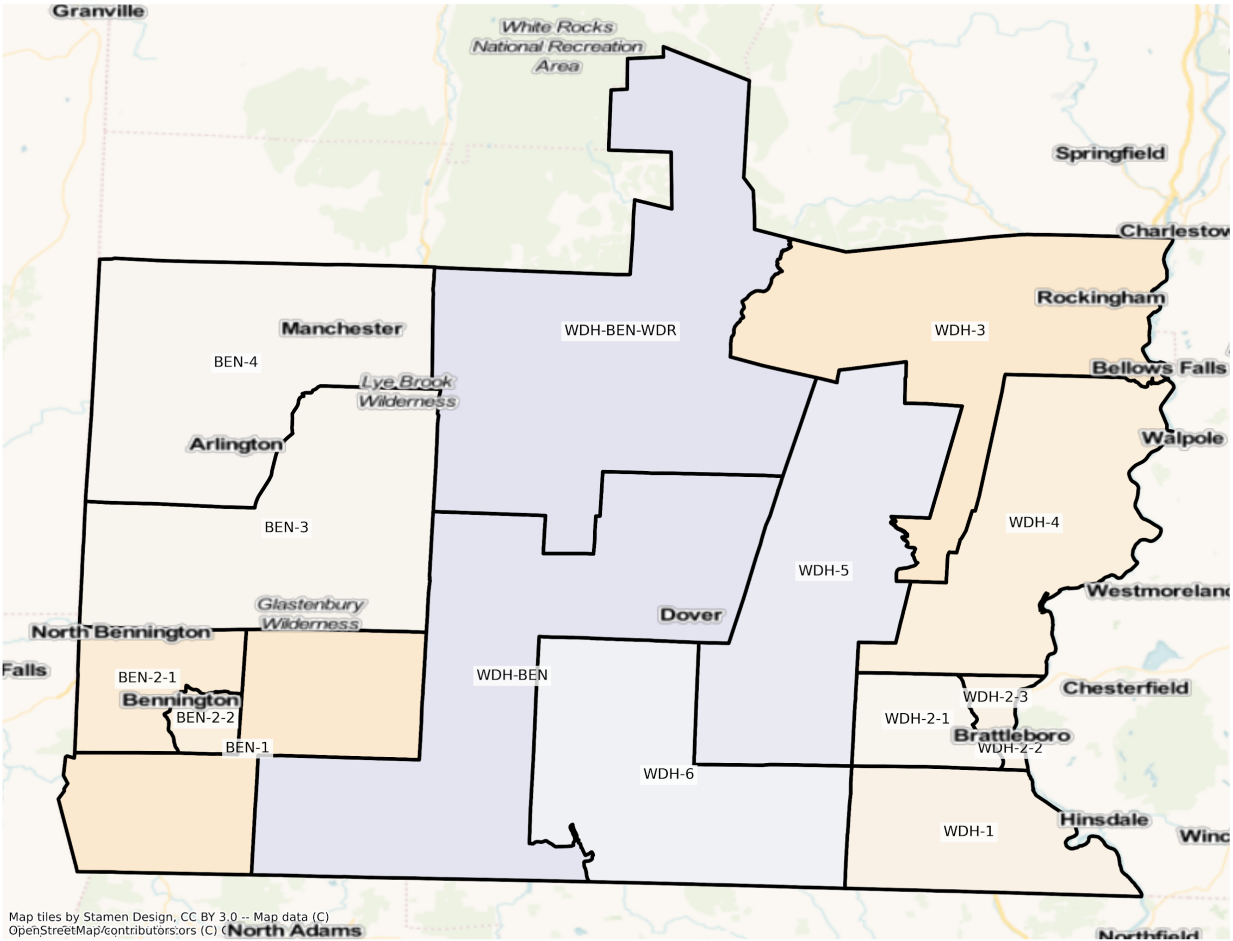


Southern Region

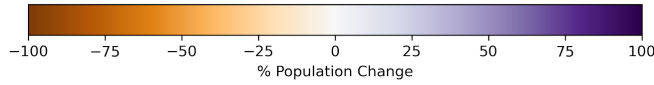
VT Southern Region State House Districts
Population % Change from 2010 to 2020
Total Population



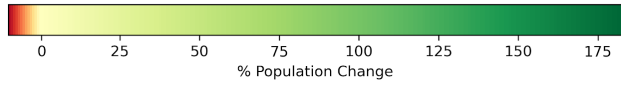
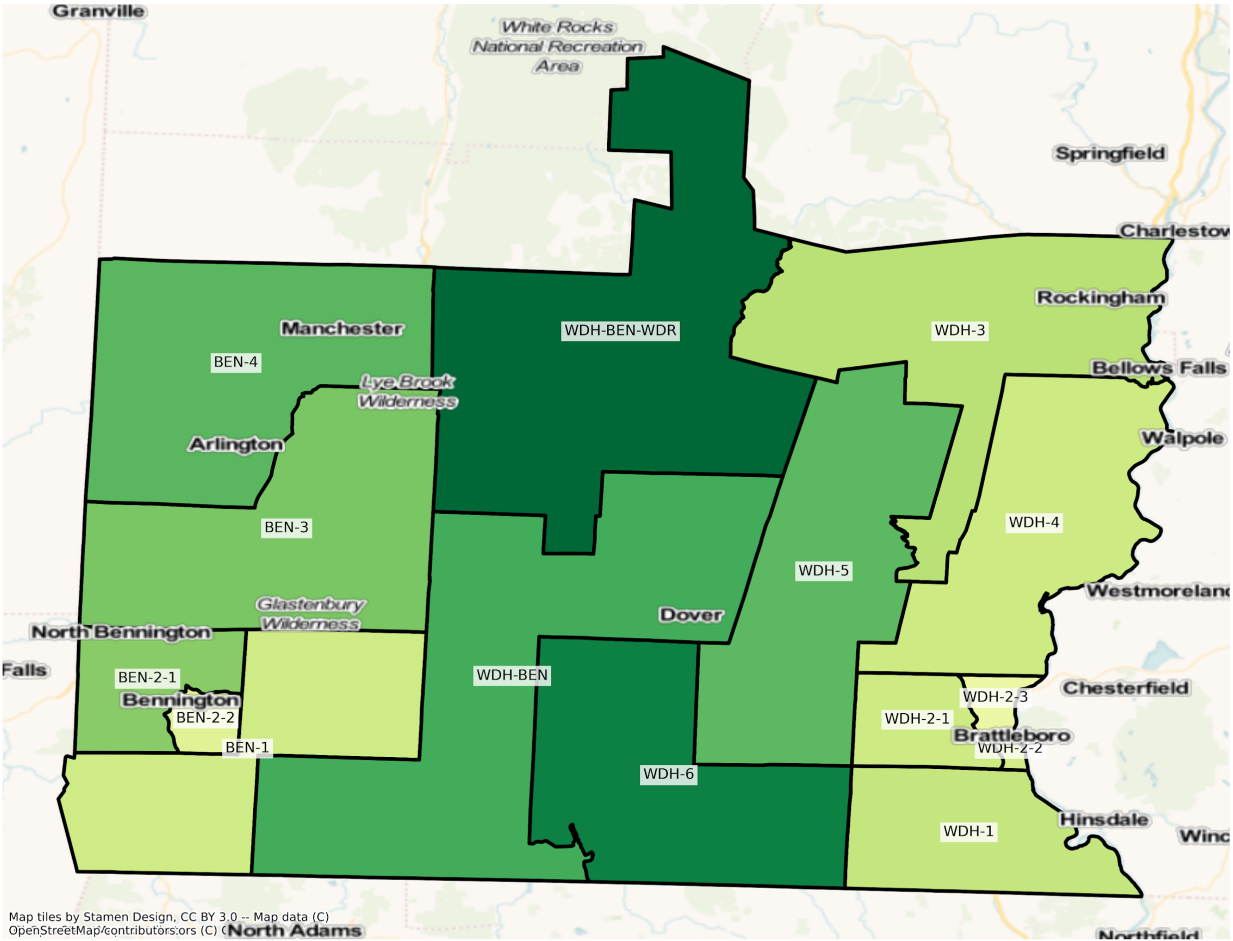
VT Southern Region State House Districts
 Population % Change from 2010 to 2020
 Ethnicity: Not Latino White alone



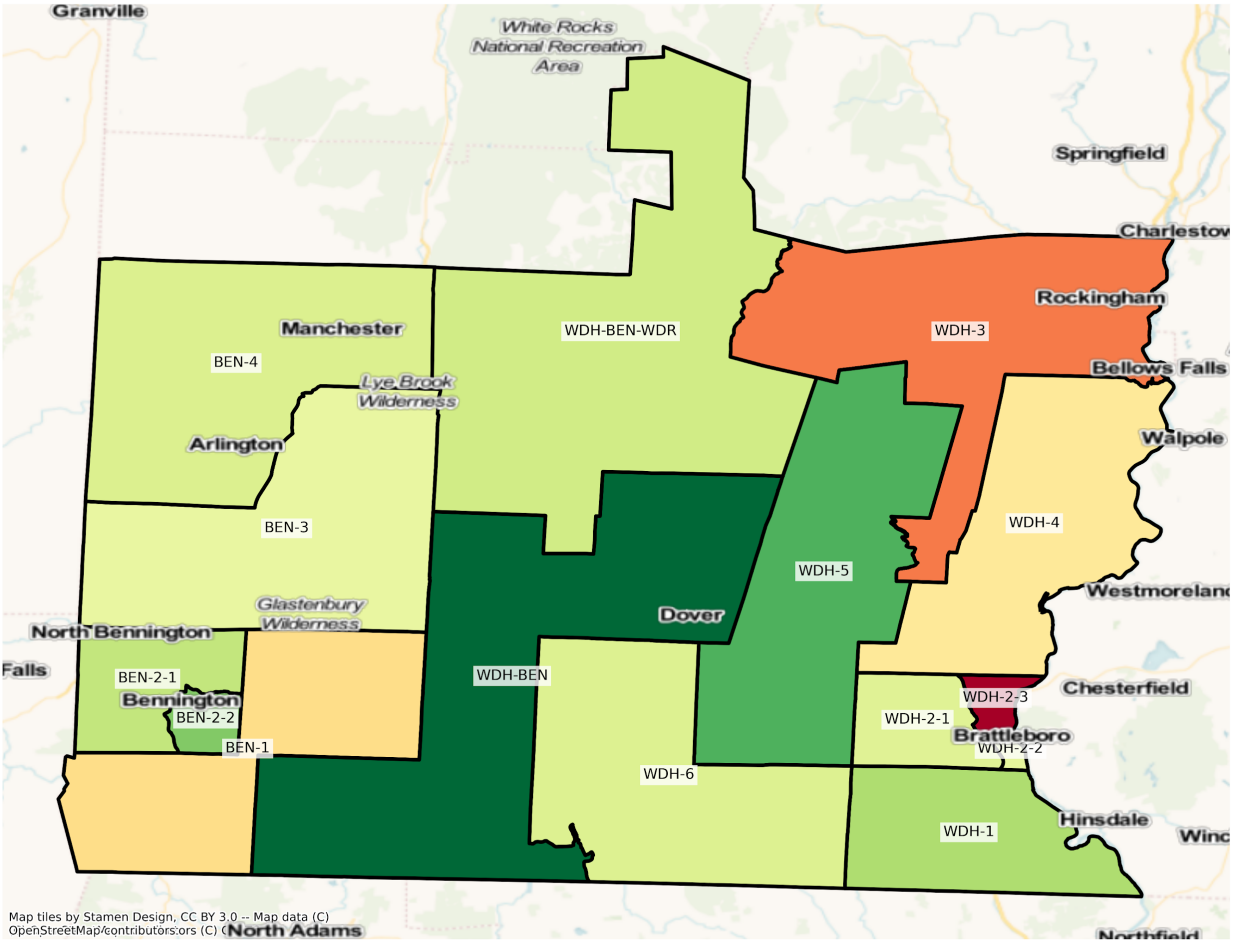
Map tiles by Stamen Design, CC BY 3.0 -- Map data (C) OpenStreetMap/contributors/ors (C) (North Adams



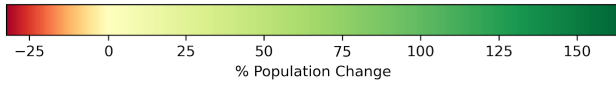
VT Southern Region State House Districts
 Population % Change from 2010 to 2020
 Ethnicity: Hispanic or Latino



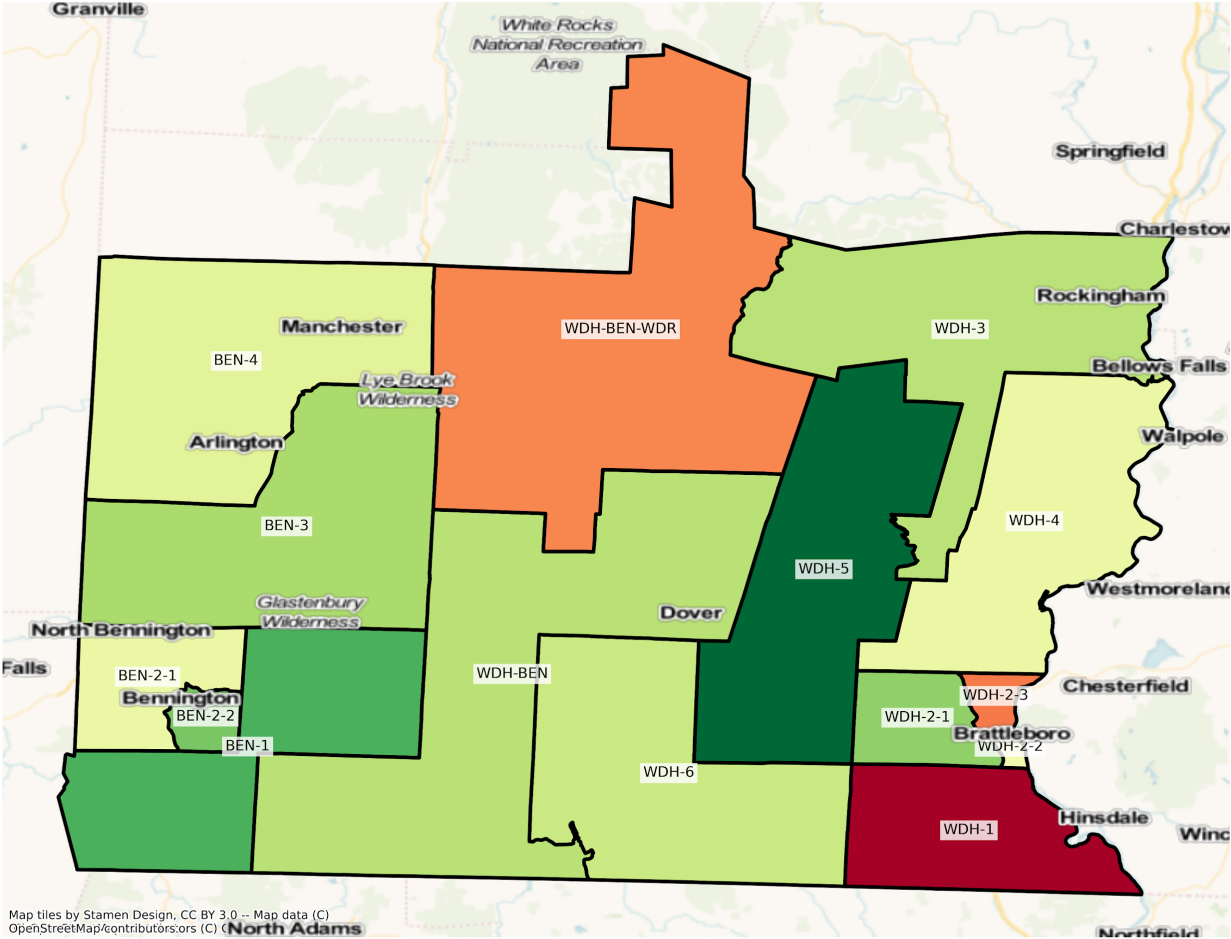
VT Southern Region State House Districts
 Population % Change from 2010 to 2020
 Ethnicity: Not Latino Asian alone



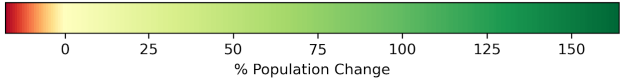
Map tiles by Stamen Design, CC BY 3.0 -- Map data (C) OpenStreetMap/contributors,ors (C) (North Adams



VT Southern Region State House Districts
 Population % Change from 2010 to 2020
 Ethnicity: Not Latino African American alone

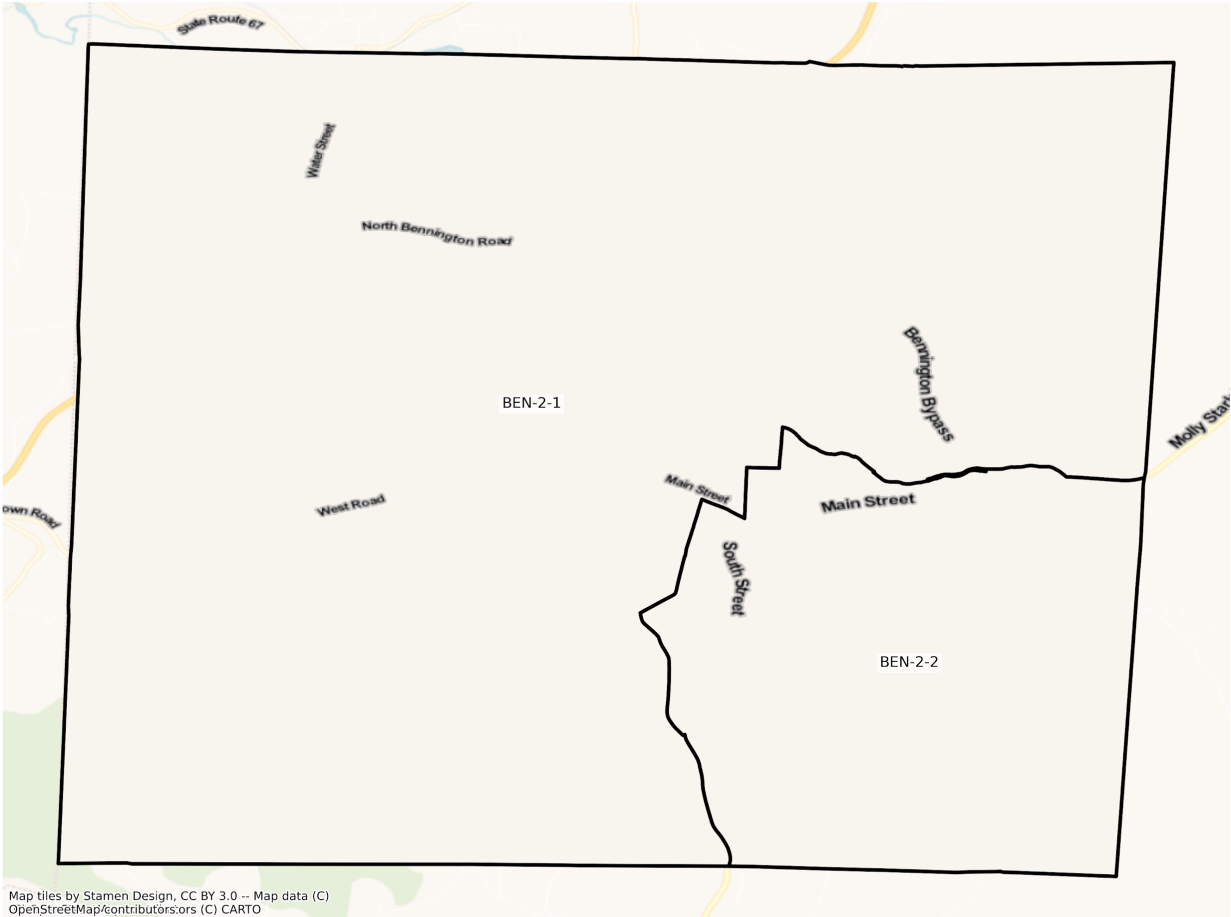


Map tiles by Stamen Design, CC BY 3.0 -- Map data (C) OpenStreetMap/contributors,ors (C) (North Adams

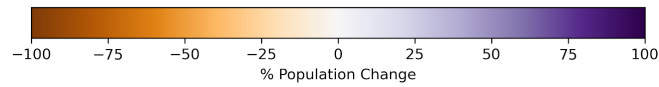


Bennington

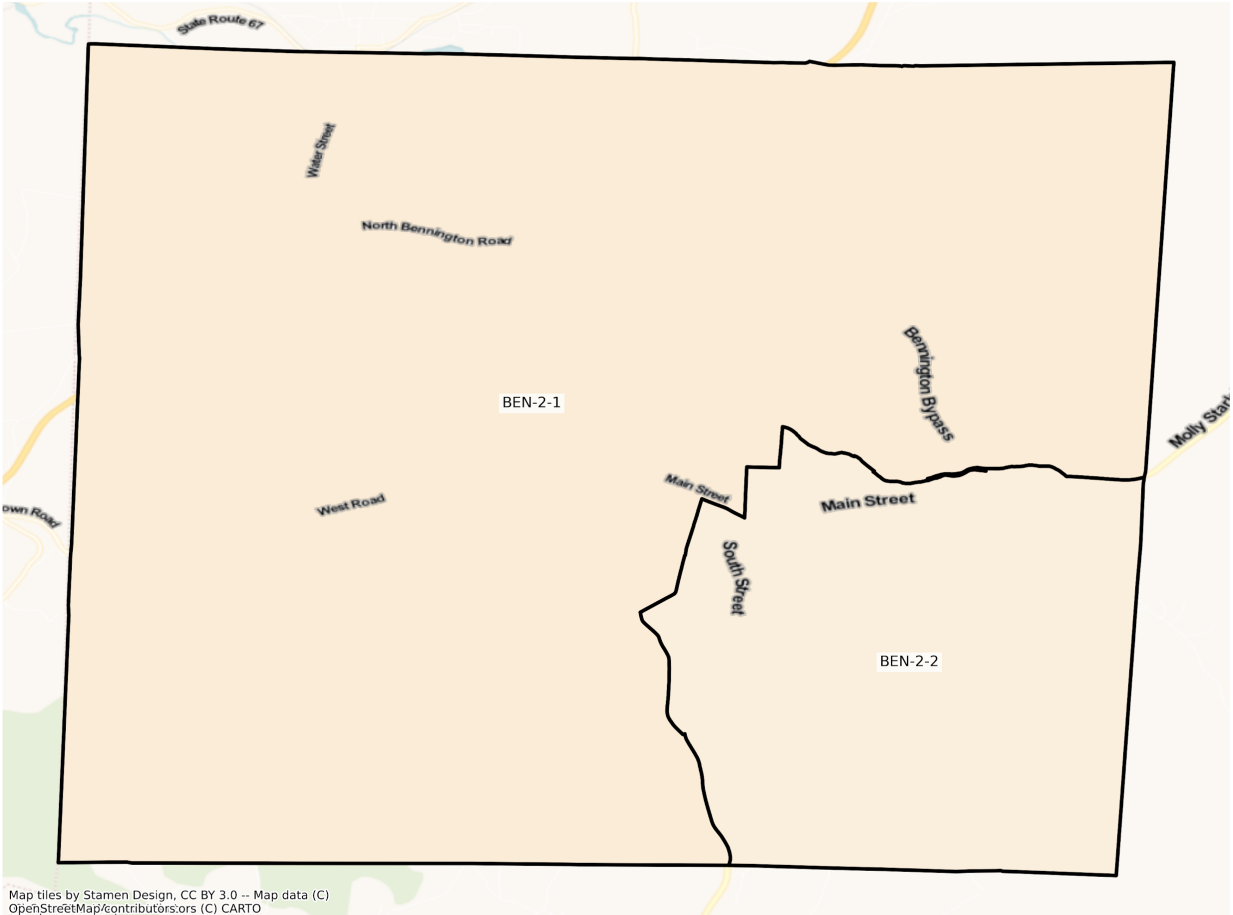
VT Bennington State House Districts
Population % Change from 2010 to 2020
Total Population



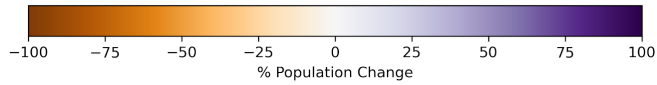
Map tiles by Stamen Design, CC BY 3.0 -- Map data (C)
OpenStreetMap/contributors/ors (C) CARTO



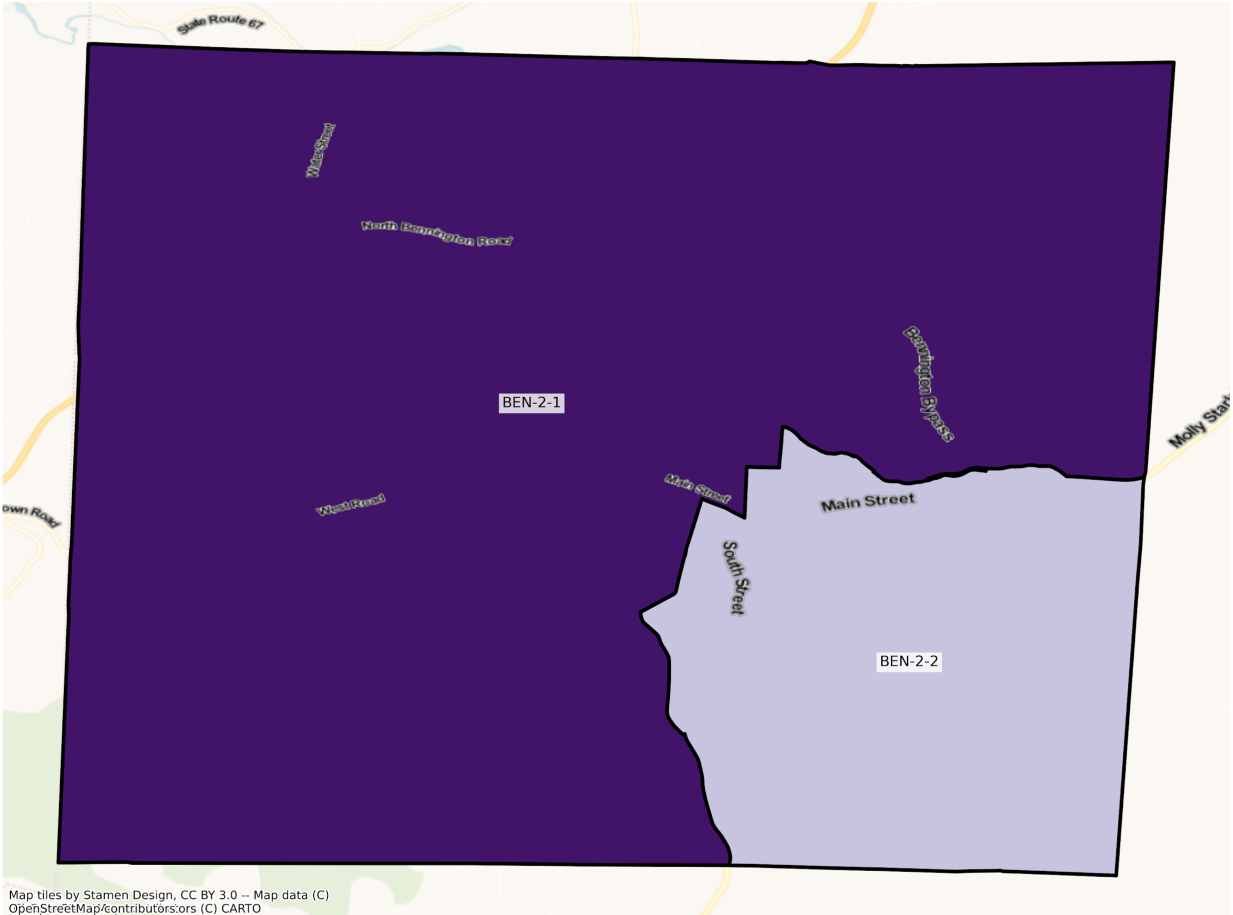
VT Bennington State House Districts
Population % Change from 2010 to 2020
Ethnicity: Not Latino White alone



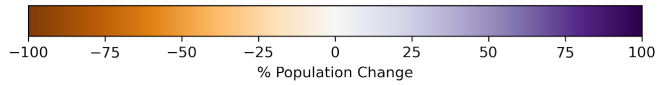
Map tiles by Stamen Design, CC BY 3.0 -- Map data (C)
OpenStreetMap/contributors/sors (C) CARTO



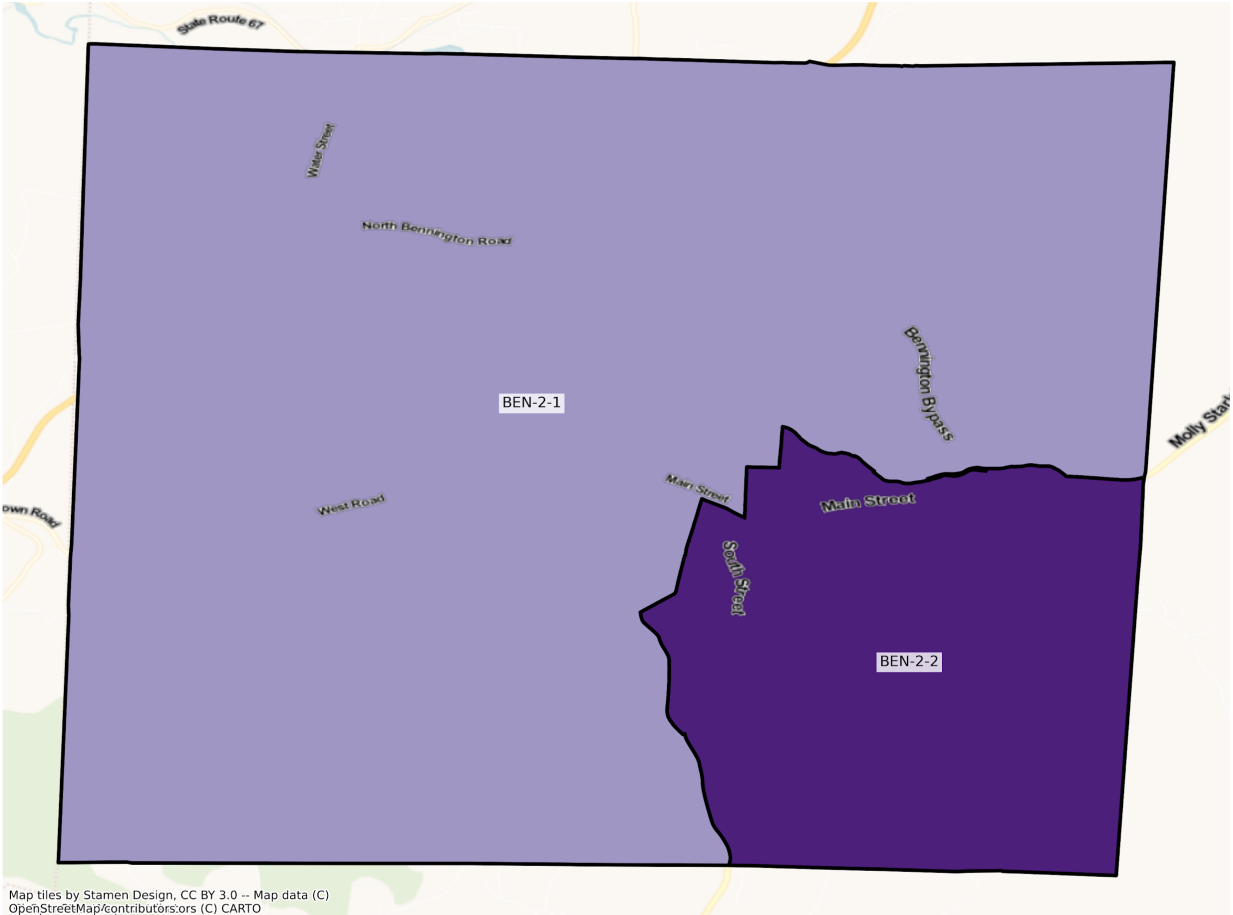
VT Bennington State House Districts
Population % Change from 2010 to 2020
Ethnicity: Hispanic or Latino



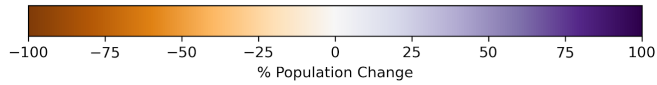
Map tiles by Stamen Design, CC BY 3.0 -- Map data (C)
OpenStreetMap/contributors/srs (C) CARTO



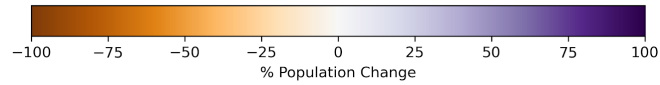
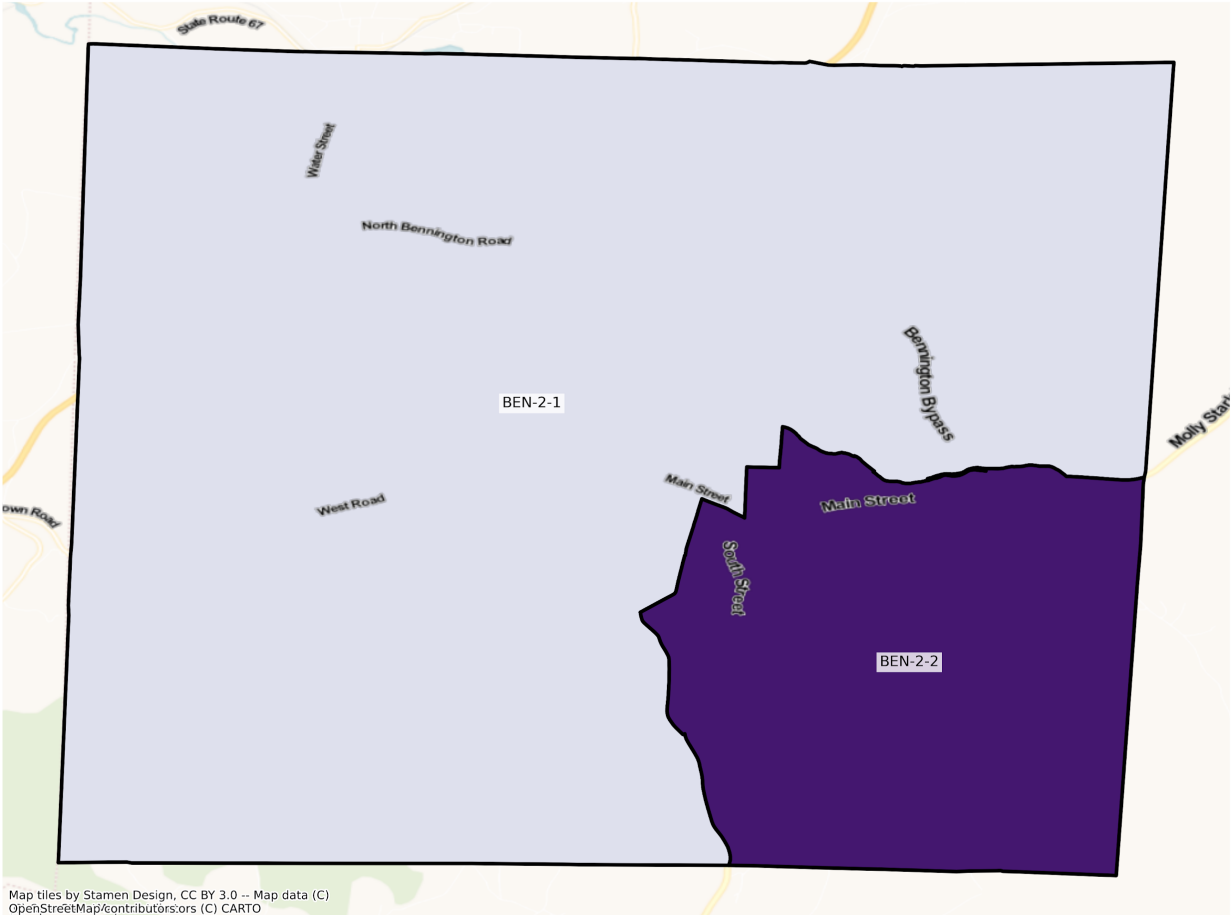
VT Bennington State House Districts
Population % Change from 2010 to 2020
Ethnicity: Not Latino Asian alone



Map tiles by Stamen Design, CC BY 3.0 -- Map data (C)
OpenStreetMap/contributors/sors (C) CARTO

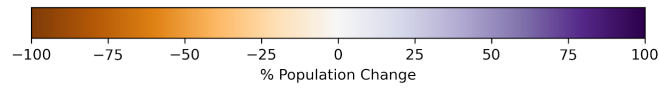
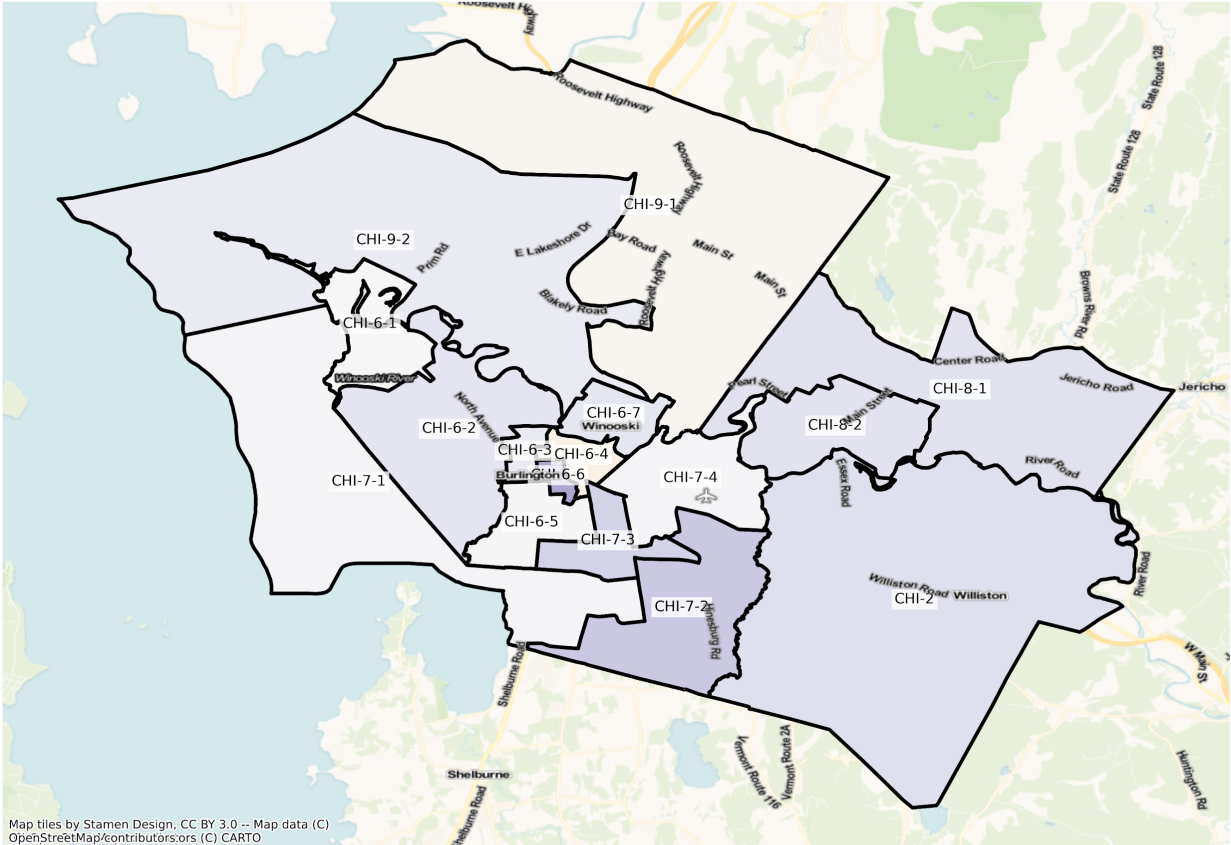


VT Bennington State House Districts
Population % Change from 2010 to 2020
Ethnicity: Not Latino African American alone

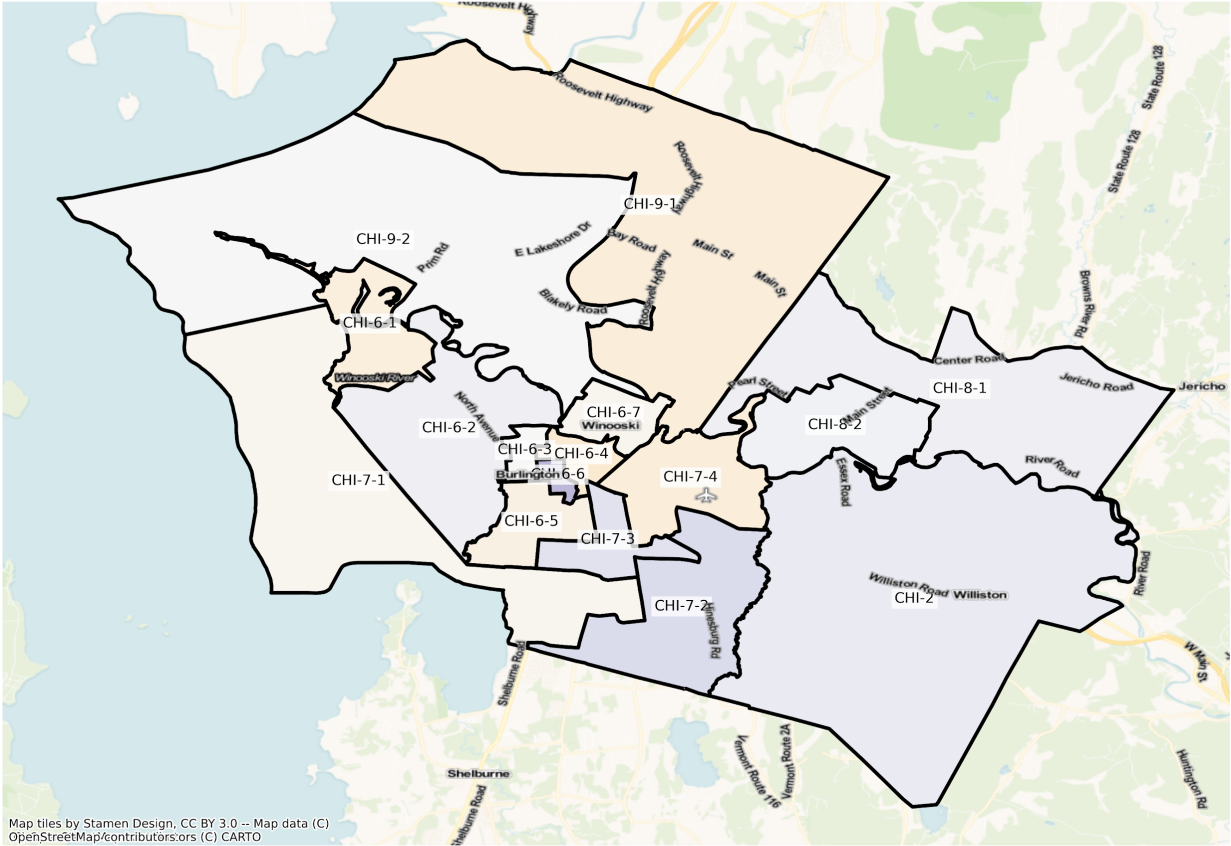


Burlington

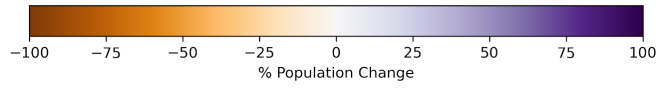
VT Burlington State House Districts
Population % Change from 2010 to 2020
Total Population



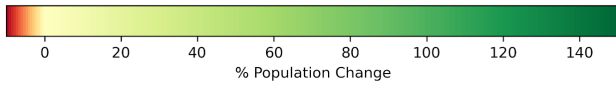
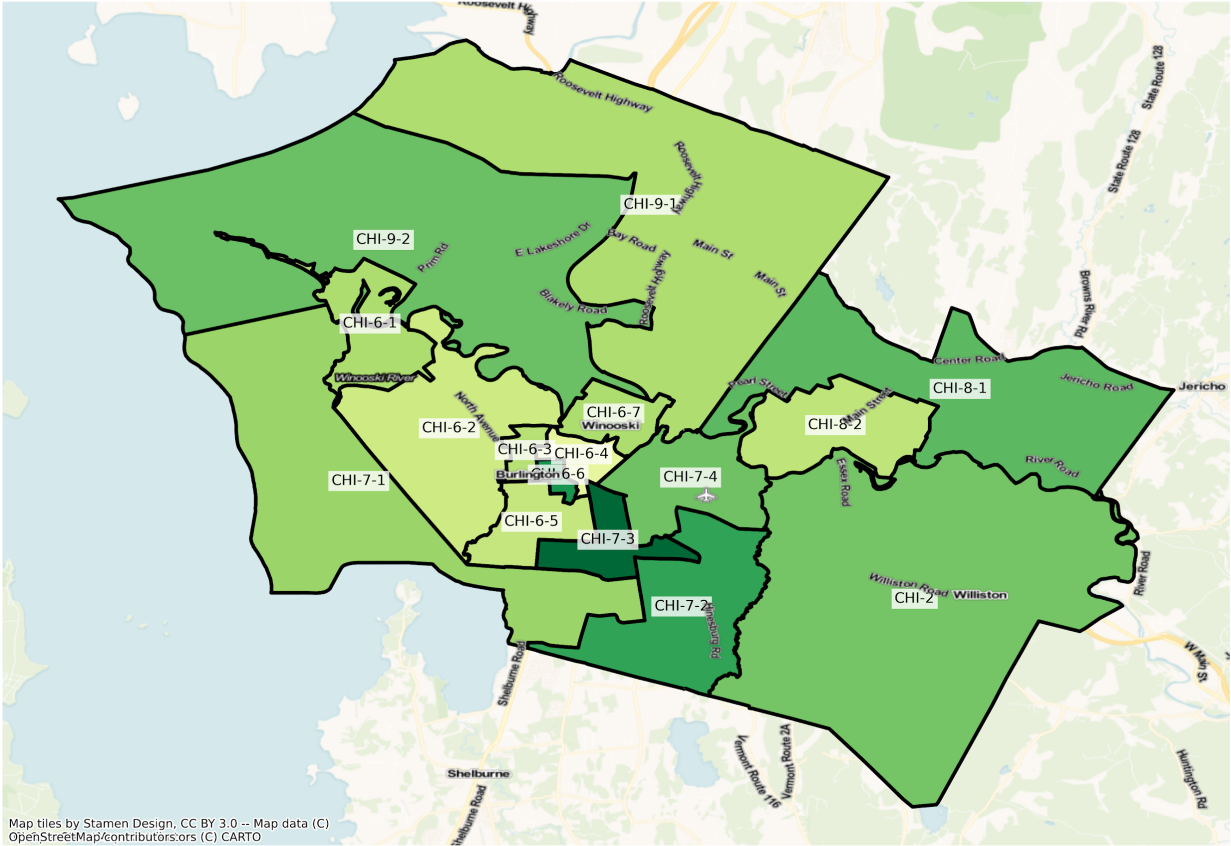
VT Burlington State House Districts
 Population % Change from 2010 to 2020
 Ethnicity: Not Latino White alone



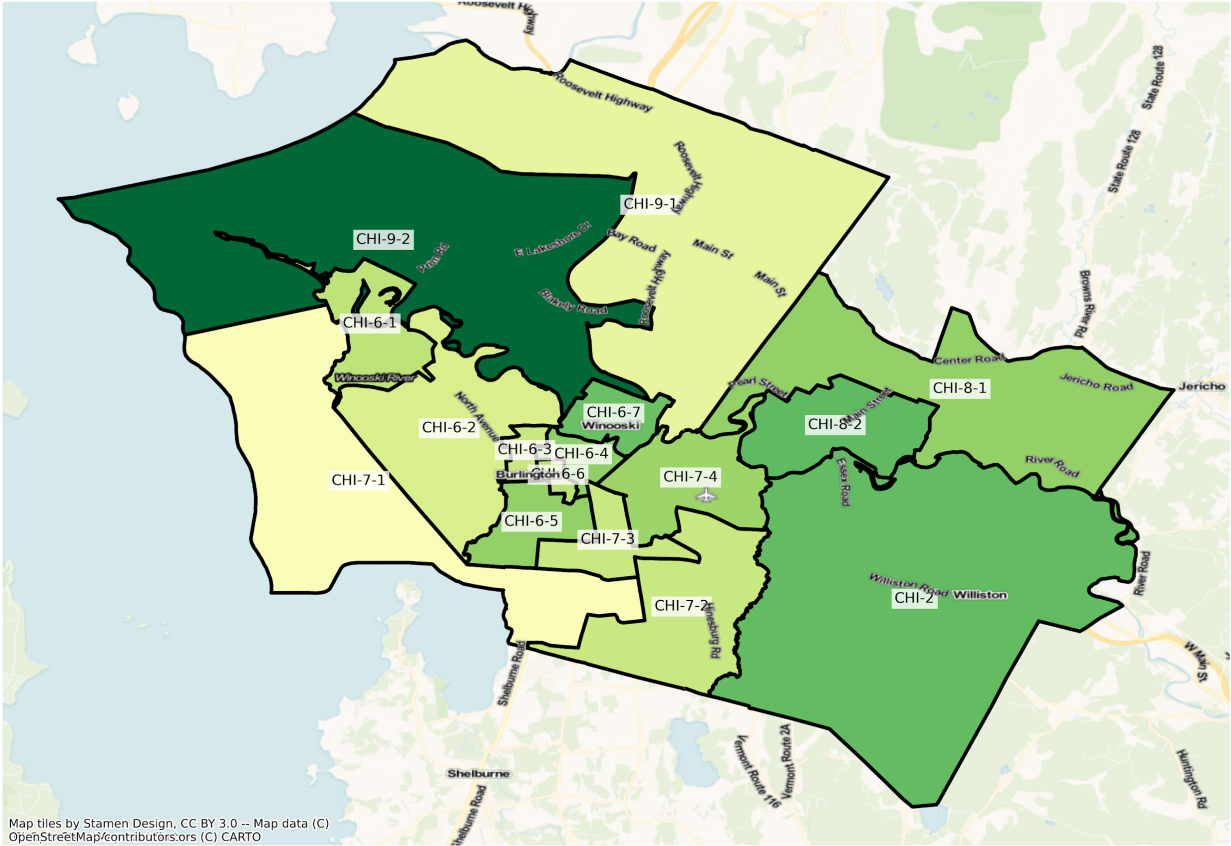
Map tiles by Stamen Design, CC BY 3.0 -- Map data (C)
 OpenStreetMap/contributors/ors (C) CARTO



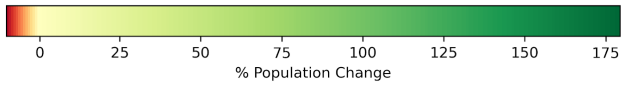
VT Burlington State House Districts
 Population % Change from 2010 to 2020
 Ethnicity: Hispanic or Latino



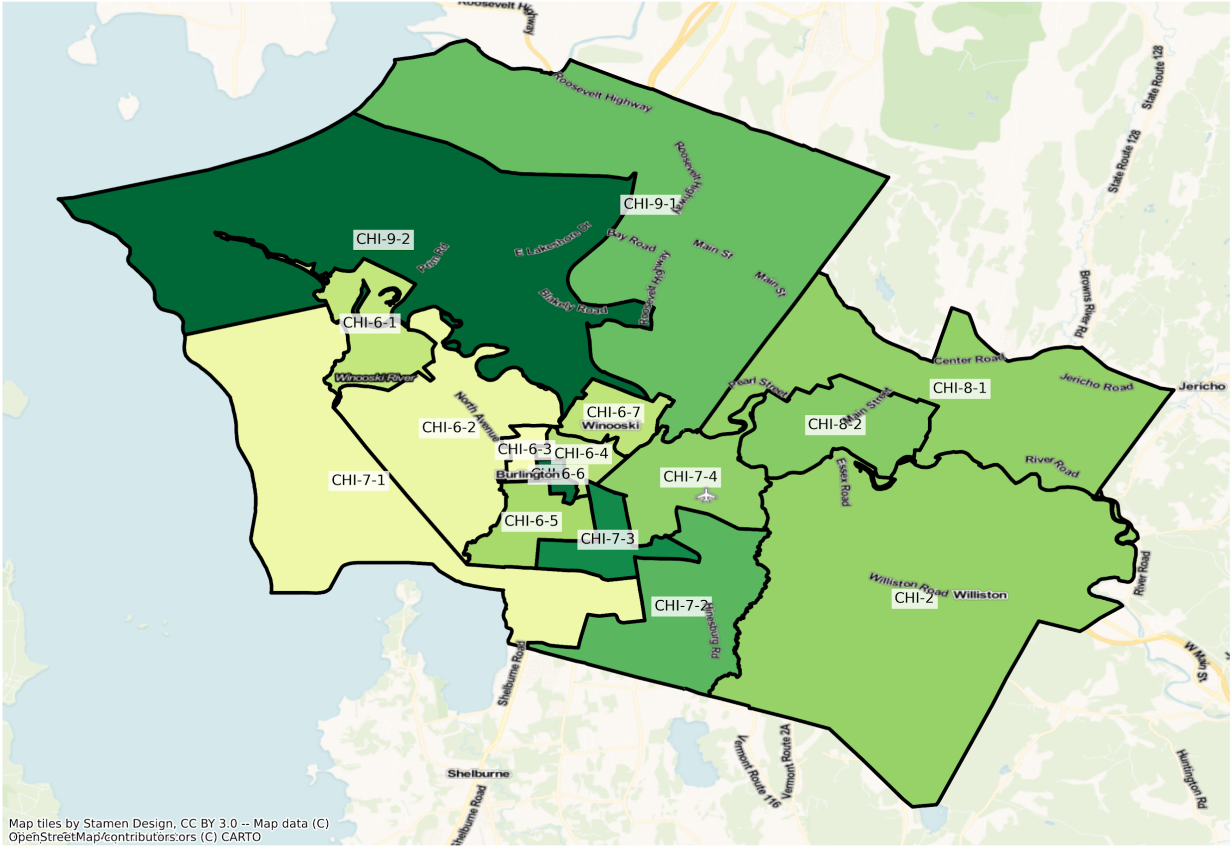
VT Burlington State House Districts
 Population % Change from 2010 to 2020
 Ethnicity: Not Latino Asian alone



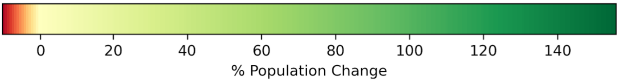
Map tiles by Stamen Design, CC BY 3.0 -- Map data (C) OpenStreetMap/contributors,ors (C) CARTO



VT Burlington State House Districts
 Population % Change from 2010 to 2020
 Ethnicity: Not Latino African American alone

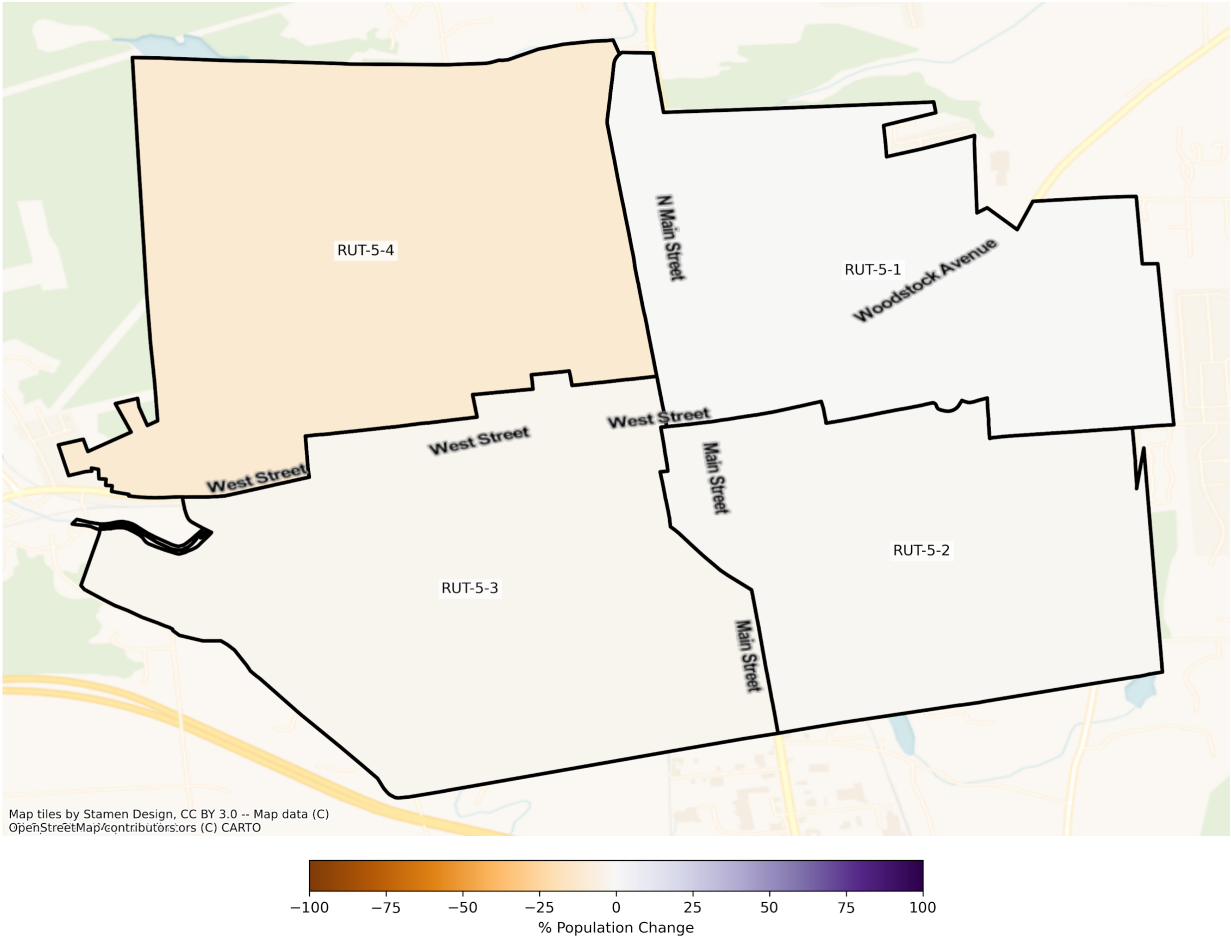


Map tiles by Stamen Design, CC BY 3.0 -- Map data (C) OpenStreetMap/contributors,ors (C) CARTO

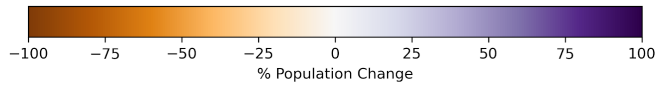
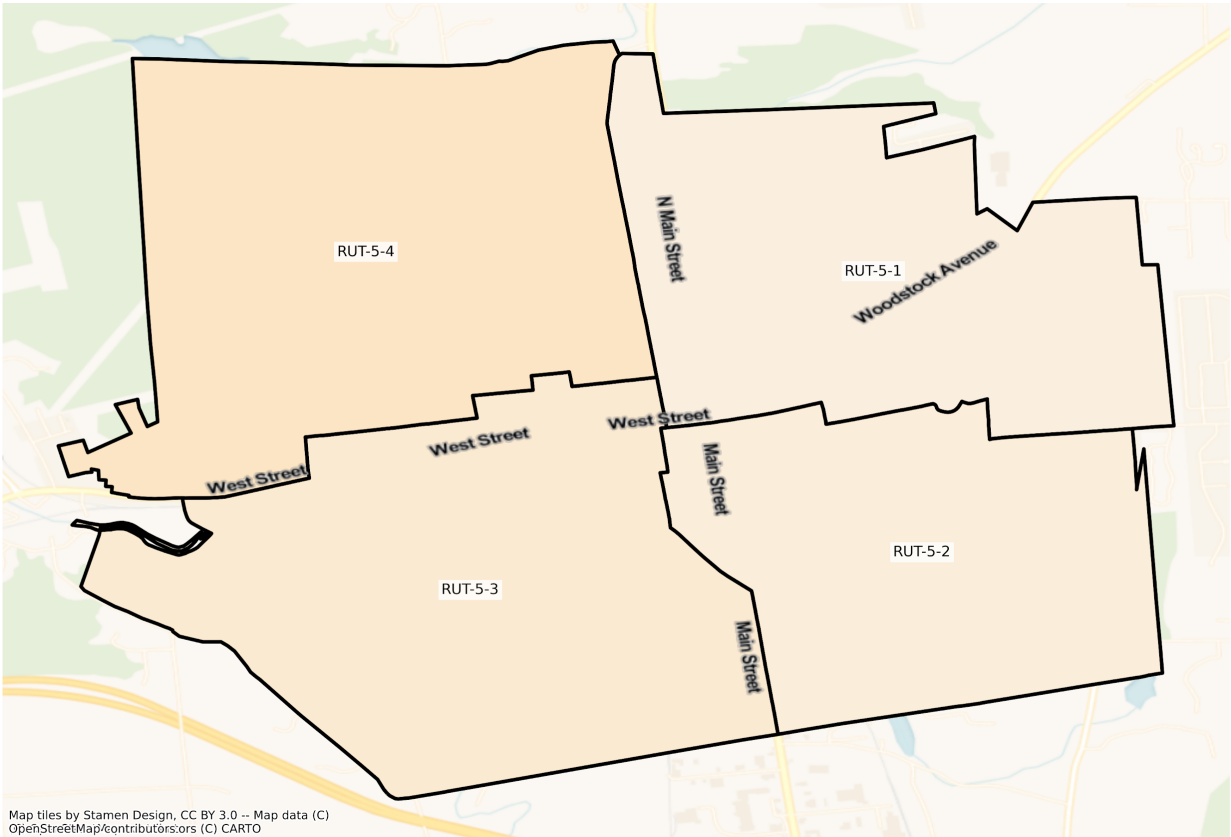


Rutland

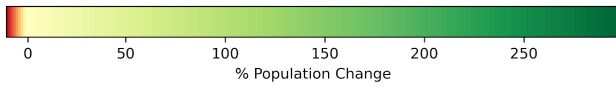
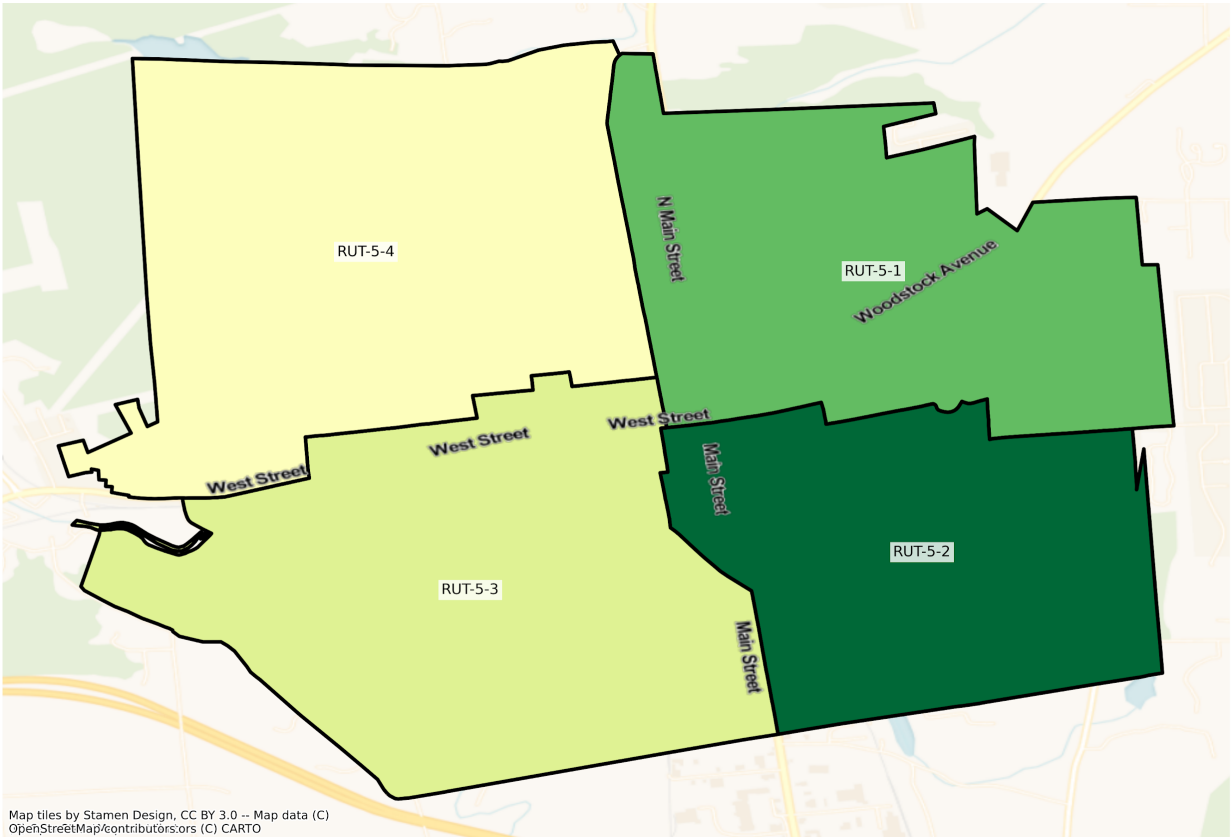
VT Rutland State House Districts
Population % Change from 2010 to 2020
Total Population



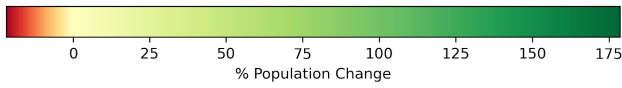
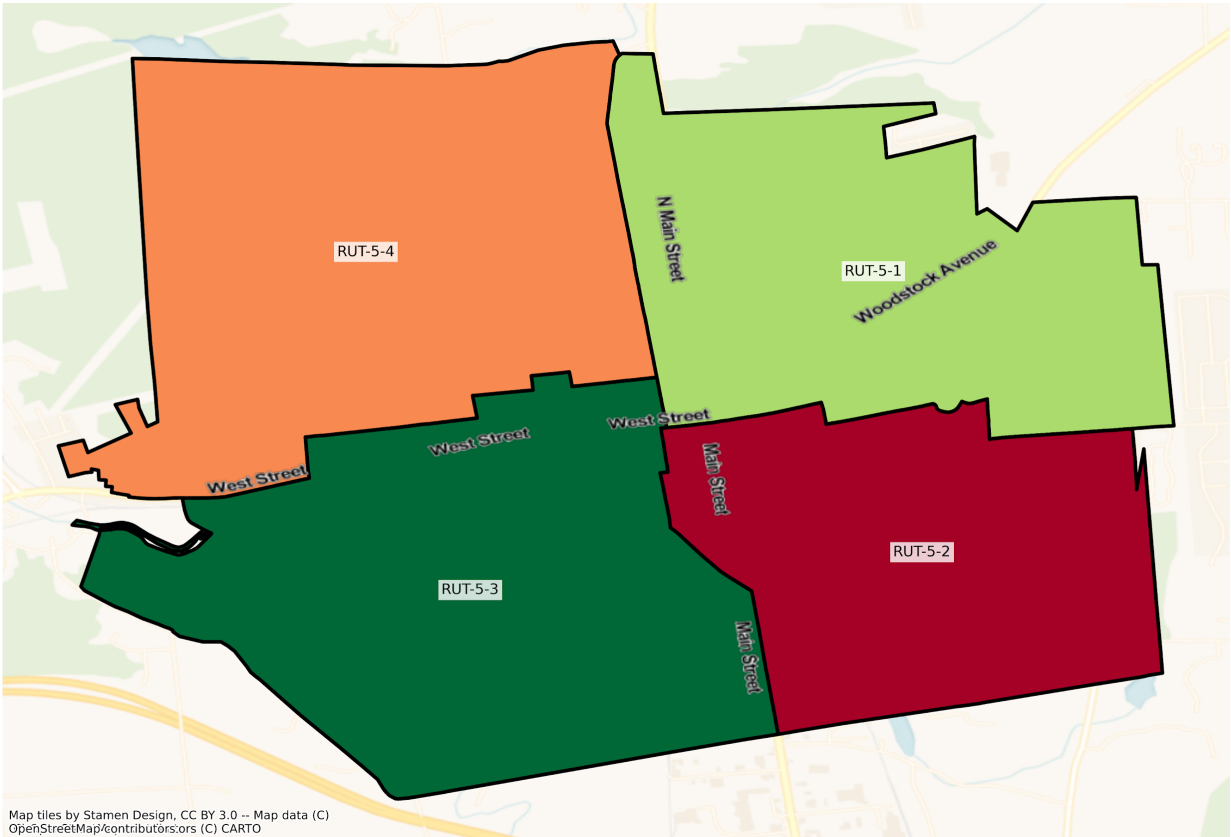
VT Rutland State House Districts
Population % Change from 2010 to 2020
Ethnicity: Not Latino White alone



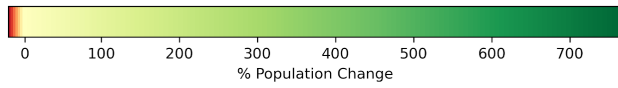
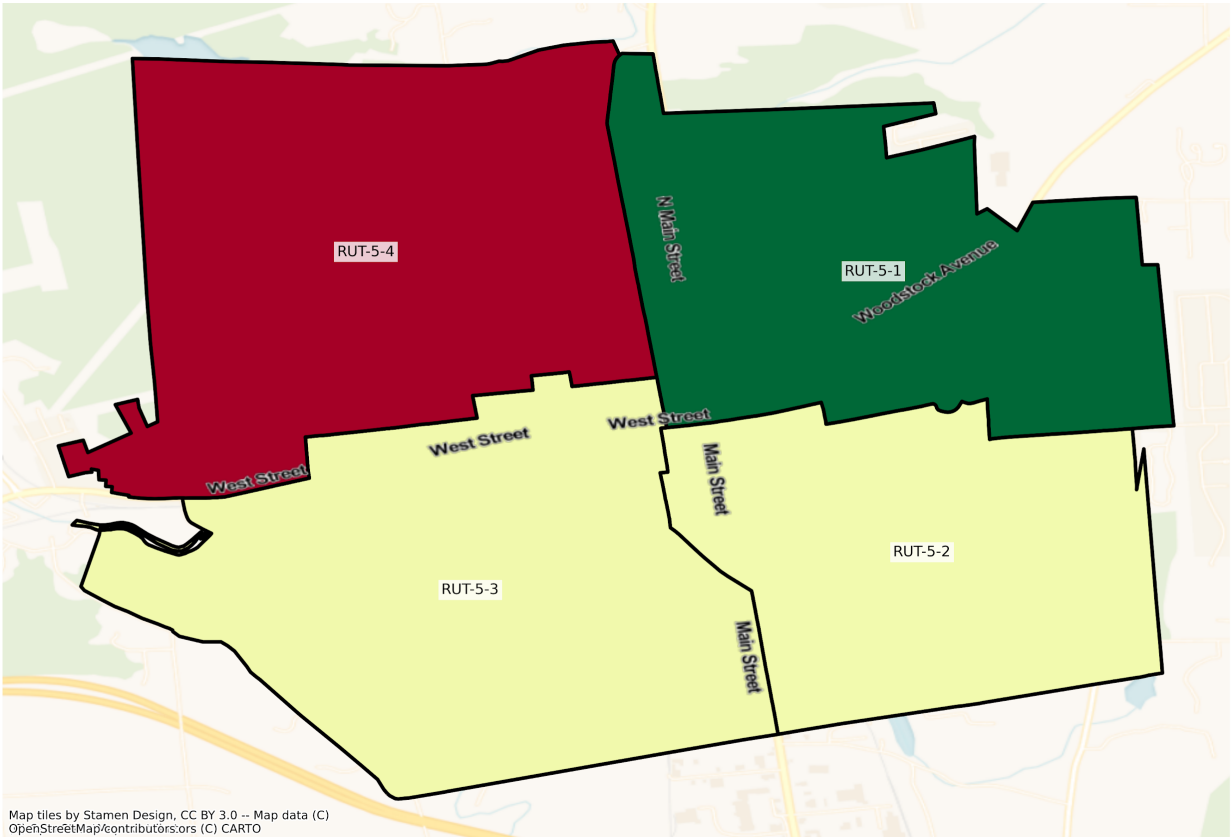
VT Rutland State House Districts
Population % Change from 2010 to 2020
Ethnicity: Hispanic or Latino



VT Rutland State House Districts
Population % Change from 2010 to 2020
Ethnicity: Not Latino Asian alone



VT Rutland State House Districts
Population % Change from 2010 to 2020
Ethnicity: Not Latino African American alone



2010 Population by Race and Ethnicity at the State House District Level

DISTRICT	Total Population	Hispanic or Latino Origin	White Alone, not Latino	African American Alone, not Latino	AIAN Alone, not Latino ¹	Asian Alone, not Latino	NHPI Alone, not Latino ²	Other Alone, not Latino	Two or More, not Latino
ADD-1	8496	258	7509	106	13	365	0	13	232
ADD-2	4496	46	4344	13	17	20	0	1	55
ADD-3	7897	171	7446	95	17	54	3	1	110
ADD-4	8922	87	8621	26	10	55	0	14	109
ADD-5	3778	74	3629	15	5	15	2	4	34
ADD-RUT	3990	52	3847	21	16	14	0	2	38
BEN-1	3951	39	3844	11	8	15	0	3	31
BEN-2-1	7997	133	7542	107	11	96	7	10	91
BEN-2-2	7767	141	7401	66	35	31	4	3	86
BEN-3	3840	42	3700	13	2	22	0	0	61
BEN-4	7827	113	7464	73	7	80	1	4	85
BEN-RUT	4130	37	4020	8	3	11	0	2	49
CAL-1	4127	32	4002	25	15	11	1	3	38
CAL-2	4161	29	3987	26	21	16	0	2	80
CAL-3	7603	114	7187	54	47	89	0	8	104
CAL-4	8763	122	8336	36	29	121	0	8	111
CAL-WAS	4361	22	4242	17	8	14	0	3	55
CHI-1	4081	38	3937	11	4	22	0	0	69
CHI-10	9039	53	8710	65	29	54	2	0	126
CHI-2	8706	127	8220	84	16	170	0	9	80
CHI-3	8024	96	7736	42	14	47	0	3	86
CHI-4-1	3787	71	3633	16	3	29	3	5	27
CHI-4-2	4363	58	4158	15	10	32	1	6	83
CHI-5-1	3843	47	3687	27	5	41	0	6	30
CHI-5-2	3975	61	3784	23	16	54	0	0	37
CHI-6-1	8934	145	7959	318	14	317	6	7	168
CHI-6-2	3879	118	3304	161	14	176	1	7	98
CHI-6-3	8513	247	6857	611	36	489	6	17	250
CHI-6-4	9706	330	8614	208	17	277	4	26	230
CHI-6-5	8623	220	7786	224	25	169	3	8	188

CHI-6-6	3173	86	2913	48	5	73	0	7	41
CHI-6-7	7533	168	6166	485	27	451	1	17	218
CHI-7-1	4533	75	4045	78	4	252	1	3	75
CHI-7-2	4299	78	3803	51	6	286	0	5	70
CHI-7-3	4518	91	3934	107	17	248	5	7	109
CHI-7-4	4554	92	4094	101	7	175	0	2	83
CHI-8-1	8199	135	7577	118	8	225	1	13	122
CHI-8-2	9063	179	8192	135	33	349	1	15	159
CHI-8-3	4347	38	4132	29	13	59	0	2	74
CHI-9-1	9012	157	8301	144	25	258	4	3	120
CHI-9-2	7378	105	7010	52	15	92	1	2	101
ESX-CAL	3754	33	3628	6	19	12	0	0	56
ESX-CAL- ORL	3969	31	3850	10	20	13	0	1	44
FRA-1	4515	44	4379	9	13	28	2	2	38
FRA-2	4285	57	4145	15	13	22	1	0	32
FRA-3-1	8583	148	8009	66	73	77	3	10	197
FRA-3-2	4334	50	4122	33	34	14	0	0	81
FRA-4	8561	85	8017	30	163	36	0	0	230
FRA-5	8996	61	8506	24	142	24	3	0	236
FRA-6	4490	66	4319	11	15	15	2	0	62
FRA-7	3982	60	3793	12	34	7	0	0	76
GI-CHI	8283	95	7866	26	66	24	4	5	197
LAM-1	4314	91	4125	18	7	37	0	4	32
LAM-2	8423	97	8008	69	46	36	1	23	143
LAM-3	4332	36	4190	14	14	14	2	0	62
LAM-WAS	7987	102	7641	51	28	38	0	8	119
ORA-1	8835	102	8508	36	19	32	0	4	134
ORA-2	4417	39	4269	12	13	20	1	6	57
ORA-CAL	4404	35	4251	7	11	19	2	12	67
ORA-WAS -ADD	8305	79	8012	29	25	47	0	4	109
ORL-1	8010	77	7744	27	36	19	2	2	103
ORL-2	8843	116	8421	69	52	30	6	9	140
ORL-CAL	8355	85	8035	45	16	30	1	15	128

ORL-LAM	4510	44	4347	15	26	13	0	1	64
RUT-1	3864	56	3685	43	8	24	1	1	46
RUT-2	8896	54	8641	36	13	50	2	1	99
RUT-3	8406	107	8130	25	12	37	2	3	90
RUT-4	4100	37	3987	17	5	32	0	0	22
RUT-5-1	4134	35	4003	6	6	40	0	2	42
RUT-5-2	3980	55	3772	30	7	46	0	7	63
RUT-5-3	4099	64	3866	49	22	14	1	2	81
RUT-5-4	4250	96	3999	42	10	27	3	0	73
RUT-6	7478	50	7256	22	28	37	0	2	83
RUT-BEN	4545	52	4393	18	9	15	0	2	56
RUT-WDR -1	4079	50	3900	14	13	38	0	7	57
RUT-WDR -2	4256	32	4119	12	10	22	1	0	60
WAS-1	9093	214	8527	83	17	71	2	7	172
WAS-2	7924	117	7652	29	12	19	0	7	88
WAS-3	9052	212	8468	108	17	77	1	6	163
WAS-4	7855	166	7249	74	18	168	2	9	169
WAS-5	4380	65	4186	27	8	24	0	1	69
WAS-6	4438	49	4249	23	12	28	0	5	72
WAS-7	7598	88	7313	23	15	53	4	7	95
WAS-CHI	8316	79	7984	36	16	67	3	9	122
WDH-1	4327	73	4151	23	6	15	0	5	54
WDH-2-1	4230	87	3953	37	12	54	2	4	81
WDH-2-2	3932	133	3492	93	11	81	0	9	113
WDH-2-3	3884	102	3471	72	11	133	1	17	77
WDH-3	7575	111	7185	39	16	50	6	3	165
WDH-4	7514	146	7101	55	20	64	2	11	115
WDH-5	4036	67	3850	25	13	24	2	6	49
WDH-6	3912	43	3795	12	8	14	3	1	36
WDH-BEN	3772	38	3655	19	1	11	2	1	45
WDH-BEN -WDR	4355	40	4194	22	11	29	1	2	56
WDR-1	8045	114	7719	32	13	40	3	5	119
WDR-2	4192	54	4044	13	6	23	0	2	50

WDR-3-1	4196	41	4074	10	18	17	0	0	36
WDR-3-2	9042	149	8567	74	17	68	1	9	157
WDR-4-1	3910	43	3759	17	7	33	0	1	50
WDR-4-2	7906	96	7428	63	24	156	2	4	133
WDR-5	4333	35	4205	15	12	18	1	3	44
WDR-ORA-1	4057	46	3871	34	16	33	2	3	52
WDR-ORA-2	8553	102	8098	54	18	117	1	16	147
WDR-RUT	4421	50	4246	18	11	24	1	0	71

¹American Indian and Alaska Native Alone, not Latino

²Native Hawaiian and Pacific Islander Alone, not Latino

2020 Population by Race and Ethnicity at the State House District Level

DISTRICT	Total Population	Hispanic or Latino Origin	White Alone, not Latino	African American Alone, not Latino	AIAN Alone, not Latino ¹	Asian Alone, not Latino	NHPI Alone, not Latino ²	Other Alone, not Latino	Two or More, not Latino
ADD-1	9152	468	7528	209	21	434	5	21	466
ADD-2	4688	87	4315	16	11	37	4	11	207
ADD-3	7667	217	7047	39	21	36	1	18	288
ADD-4	8953	189	8210	32	13	51	0	31	427
ADD-5	3709	116	3428	26	5	18	0	11	105
ADD-RUT	3900	80	3569	22	11	18	0	18	182
BEN-1	3613	56	3383	23	15	14	0	3	119
BEN-2-1	7795	252	6817	124	17	141	0	27	417
BEN-2-2	7538	182	6799	124	12	57	4	27	333
BEN-3	3889	83	3604	21	6	26	0	6	143
BEN-4	8102	242	7304	90	9	104	1	39	313
BEN-RUT	4335	87	4023	15	0	39	0	13	158
CAL-1	4088	64	3814	23	11	13	3	2	158
CAL-2	4091	69	3716	29	6	26	2	16	227
CAL-3	7364	269	6381	91	27	231	3	31	331
CAL-4	8055	134	7382	52	28	68	7	32	352
CAL-WAS	4493	63	4128	18	14	23	2	18	227

CHI-1	4210	84	3871	19	0	23	0	20	193
CHI-10	9341	154	8498	103	34	86	3	33	430
CHI-2	10091	232	8913	143	12	354	3	49	385
CHI-3	8216	168	7513	55	8	57	0	33	382
CHI-4-1	3970	98	3591	26	4	26	0	36	189
CHI-4-2	4629	97	4208	18	8	28	3	40	227
CHI-5-1	4261	92	3869	29	6	77	0	27	161
CHI-5-2	4250	99	3784	34	7	84	7	16	219
CHI-6-1	8974	226	7312	458	18	492	1	40	427
CHI-6-2	4347	162	3504	185	21	238	1	20	216
CHI-6-3	9179	370	6837	660	12	720	0	62	518
CHI-6-4	9249	389	7625	317	8	512	0	21	377
CHI-6-5	8736	313	7309	362	15	307	0	39	391
CHI-6-6	4507	191	3921	119	8	114	0	27	127
CHI-6-7	8411	262	5983	714	36	924	3	35	454
CHI-7-1	4627	124	3938	89	2	264	1	24	185
CHI-7-2	5467	165	4504	101	4	422	2	31	238
CHI-7-3	5572	228	4500	249	6	365	1	26	197
CHI-7-4	4626	170	3715	174	5	309	3	24	226
CHI-8-1	9402	262	8045	202	31	408	4	31	419
CHI-8-2	10310	260	8571	240	7	731	3	32	466
CHI-8-3	4424	79	4008	33	5	62	1	20	216
CHI-9-1	8801	242	7547	276	21	313	7	31	364
CHI-9-2	8060	197	7057	133	4	257	5	15	392
ESX-CAL	3677	36	3434	12	13	15	3	5	159
ESX-CAL- ORL	3746	39	3531	4	6	6	2	12	146
FRA-1	4845	74	4457	17	13	32	5	6	241
FRA-2	5024	112	4610	28	11	46	1	21	195
FRA-3-1	9130	223	8034	125	74	122	1	34	517
FRA-3-2	4735	86	4287	60	31	37	3	3	228
FRA-4	8799	116	7854	38	155	19	1	22	594
FRA-5	8775	132	8067	28	143	25	1	13	366
FRA-6	4659	80	4298	7	22	10	1	11	230
FRA-7	3997	92	3650	18	34	21	3	10	169

GI-CHI	8675	152	7958	58	41	39	1	20	406
LAM-1	5223	177	4694	67	9	42	0	27	207
LAM-2	8534	153	7795	68	37	37	0	32	412
LAM-3	4507	96	4161	21	14	7	0	27	181
LAM-WAS	8217	256	7362	69	21	62	1	45	401
ORA-1	8966	152	8241	36	35	25	0	36	441
ORA-2	4394	78	4007	22	12	19	2	23	231
ORA-CAL	4471	59	4100	20	24	37	0	12	219
ORA-WAS -ADD	8204	156	7493	60	34	46	3	29	383
ORL-1	7919	134	7389	23	40	10	0	7	316
ORL-2	8753	143	8012	56	73	52	0	26	391
ORL-CAL	8550	140	7889	37	53	31	1	31	368
ORL-LAM	4593	68	4224	15	47	33	0	13	193
RUT-1	3377	62	3094	10	9	15	0	11	176
RUT-2	8707	94	8000	53	6	43	6	20	485
RUT-3	8157	135	7507	102	16	60	0	27	310
RUT-4	3935	69	3648	22	23	43	0	4	126
RUT-5-1	4116	98	3699	52	7	67	3	9	181
RUT-5-2	3936	219	3419	46	13	36	1	18	184
RUT-5-3	3984	96	3413	76	19	39	1	11	329
RUT-5-4	3779	100	3393	34	20	24	2	7	199
RUT-6	7449	119	6765	29	23	36	0	23	454
RUT-BEN	4538	90	4188	29	4	21	0	24	182
RUT-WDR -1	4709	97	4342	24	6	53	1	22	164
RUT-WDR -2	4653	76	4308	21	8	33	4	18	185
WAS-1	8746	271	7717	196	15	86	2	24	435
WAS-2	7923	217	7275	35	13	52	1	30	300
WAS-3	8491	300	7415	135	40	76	1	61	463
WAS-4	8074	253	7038	87	12	211	6	68	399
WAS-5	4474	89	4099	26	3	27	0	24	206
WAS-6	4480	96	4070	38	7	32	1	18	218
WAS-7	8197	156	7580	36	13	63	4	36	309
WAS-CHI	8669	163	7901	50	25	88	7	57	378

WDH-1	4301	110	3929	19	10	24	1	14	194
WDH-2-1	4438	126	3848	65	17	68	0	21	293
WDH-2-2	3907	187	3296	103	11	98	0	20	192
WDH-2-3	3839	120	3292	65	5	90	1	19	247
WDH-3	6992	177	6340	59	11	41	1	26	337
WDH-4	7304	211	6544	64	18	61	1	58	347
WDH-5	4701	143	4192	66	9	50	0	43	198
WDH-6	4321	113	3955	17	6	18	2	16	194
WDH-BEN	4409	86	4115	29	4	29	1	14	131
WDH-BEN -WDR	5174	113	4780	20	12	40	2	14	193
WDR-1	8349	157	7648	49	22	42	4	47	380
WDR-2	4234	71	3884	19	9	16	0	16	219
WDR-3-1	4144	92	3829	19	13	18	0	22	151
WDR-3-2	8720	174	7913	104	35	80	3	37	374
WDR-4-1	4414	102	4033	36	15	28	0	14	186
WDR-4-2	8187	196	7255	109	15	169	1	20	422
WDR-5	4333	93	4050	21	7	19	0	19	124
WDR-ORA -1	4087	50	3735	28	8	33	3	12	218
WDR-ORA -2	8974	202	8074	55	24	116	0	69	434
WDR-RUT	4243	101	3895	19	2	23	1	27	175

¹American Indian and Alaska Native Alone, not Latino

²Native Hawaiian and Pacific Islander Alone, not Latino

Percent Change of Population from 2010 to 2020 by Race and Ethnicity at State House District Level

DISTRICT	Total Population	Hispanic or Latino Origin	White Alone, not Latino	African American Alone, not Latino	AIAN Alone, not Latino ¹	Asian Alone, not Latino	NHPI Alone, not Latino ²	Other Alone, not Latino	Two or More, not Latino
ADD-1	7.72%	81.40%	0.25%	97.17%	61.54%	18.90%	inf	61.54%	100.86%
ADD-2	4.27%	89.13%	-0.67%	23.08%	-35.29%	85.00%	inf	1000.00%	276.36%
ADD-3	-2.91%	26.90%	-5.36%	-58.95%	23.53%	-33.33%	-66.67%	1700.00%	161.82%
ADD-4	0.35%	117.24%	-4.77%	23.08%	30.00%	-7.27%		121.43%	291.74%
ADD-5	-1.83%	56.76%	-5.54%	73.33%	0.00%	20.00%	-100.00%	175.00%	208.82%
ADD-RUT	-2.26%	53.85%	-7.23%	4.76%	-31.25%	28.57%		800.00%	378.95%
BEN-1	-8.55%	43.59%	-11.99%	109.09%	87.50%	-6.67%		0.00%	283.87%
BEN-2-1	-2.53%	89.47%	-9.61%	15.89%	54.55%	46.88%	-100.00%	170.00%	358.24%
BEN-2-2	-2.95%	29.08%	-8.13%	87.88%	-65.71%	83.87%	0.00%	800.00%	287.21%
BEN-3	1.28%	97.62%	-2.59%	61.54%	200.00%	18.18%		inf	134.43%
BEN-4	3.51%	114.16%	-2.14%	23.29%	28.57%	30.00%	0.00%	875.00%	268.24%
BEN-RUT	4.96%	135.14%	0.07%	87.50%	-100.00%	254.55%		550.00%	222.45%
CAL-1	-0.94%	100.00%	-4.70%	-8.00%	-26.67%	18.18%	200.00%	-33.33%	315.79%
CAL-2	-1.68%	137.93%	-6.80%	11.54%	-71.43%	62.50%	inf	700.00%	183.75%
CAL-3	-3.14%	135.96%	-11.21%	68.52%	-42.55%	159.55%	inf	287.50%	218.27%
CAL-4	-8.08%	9.84%	-11.44%	44.44%	-3.45%	-43.80%	inf	300.00%	217.12%
CAL-WAS	3.03%	186.36%	-2.69%	5.88%	75.00%	64.29%	inf	500.00%	312.73%
CHI-1	3.16%	121.05%	-1.68%	72.73%	-100.00%	4.55%		inf	179.71%
CHI-2	15.91%	82.68%	8.43%	70.24%	-25.00%	108.24%	inf	444.44%	381.25%
CHI-3	2.39%	75.00%	-2.88%	30.95%	-42.86%	21.28%		1000.00%	344.19%
CHI-4-1	4.83%	38.03%	-1.16%	62.50%	33.33%	-10.34%	-100.00%	620.00%	600.00%
CHI-4-2	6.10%	67.24%	1.20%	20.00%	-20.00%	-12.50%	200.00%	566.67%	173.49%
CHI-5-1	10.88%	95.74%	4.94%	7.41%	20.00%	87.80%		350.00%	436.67%
CHI-5-2	6.92%	62.30%	0.00%	47.83%	-56.25%	55.56%	inf	inf	491.89%
CHI-6-1	0.45%	55.86%	-8.13%	44.03%	28.57%	55.21%	-83.33%	471.43%	154.17%
CHI-6-2	12.06%	37.29%	6.05%	14.91%	50.00%	35.23%	0.00%	185.71%	120.41%
CHI-6-3	7.82%	49.80%	-0.29%	8.02%	-66.67%	47.24%	-100.00%	264.71%	107.20%
CHI-6-4	-4.71%	17.88%	-11.48%	52.40%	-52.94%	84.84%	-100.00%	-19.23%	63.91%
CHI-6-5	1.31%	42.27%	-6.13%	61.61%	-40.00%	81.66%	-100.00%	387.50%	107.98%
CHI-6-6	42.04%	122.09%	34.60%	147.92%	60.00%	56.16%		285.71%	209.76%

CHI-6-7	11.66%	55.95%	-2.97%	47.22%	33.33%	104.88%	200.00%	105.88%	108.26%
CHI-7-1	2.07%	65.33%	-2.65%	14.10%	-50.00%	4.76%	0.00%	700.00%	146.67%
CHI-7-2	27.17%	111.54%	18.43%	98.04%	-33.33%	47.55%	inf	520.00%	240.00%
CHI-7-3	23.33%	150.55%	14.39%	132.71%	-64.71%	47.18%	-80.00%	271.43%	80.73%
CHI-7-4	1.58%	84.78%	-9.26%	72.28%	-28.57%	76.57%	inf	1100.00%	172.29%
CHI-8-1	14.67%	94.07%	6.18%	71.19%	287.50%	81.33%	300.00%	138.46%	243.44%
CHI-8-2	13.76%	45.25%	4.63%	77.78%	-78.79%	109.46%	200.00%	113.33%	193.08%
CHI-8-3	1.77%	107.89%	-3.00%	13.79%	-61.54%	5.08%	inf	900.00%	191.89%
CHI-9-1	-2.34%	54.14%	-9.08%	91.67%	-16.00%	21.32%	75.00%	933.33%	203.33%
CHI-9-2	9.24%	87.62%	0.67%	155.77%	-73.33%	179.35%	400.00%	650.00%	288.12%
CHI-10	3.34%	190.57%	-2.43%	58.46%	17.24%	59.26%	50.00%	inf	241.27%
ESX-CAL	-2.05%	9.09%	-5.35%	100.00%	-31.58%	25.00%	inf	inf	183.93%
ESX-CAL- ORL	-5.62%	25.81%	-8.29%	-60.00%	-70.00%	-53.85%	inf	1100.00%	231.82%
FRA-1	7.31%	68.18%	1.78%	88.89%	0.00%	14.29%	150.00%	200.00%	534.21%
FRA-2	17.25%	96.49%	11.22%	86.67%	-15.38%	109.09%	0.00%	inf	509.38%
FRA-3-1	6.37%	50.68%	0.31%	89.39%	1.37%	58.44%	-66.67%	240.00%	162.44%
FRA-3-2	9.25%	72.00%	4.00%	81.82%	-8.82%	164.29%	inf	inf	181.48%
FRA-4	2.78%	36.47%	-2.03%	26.67%	-4.91%	-47.22%	inf	inf	158.26%
FRA-5	-2.46%	116.39%	-5.16%	16.67%	0.70%	4.17%	-66.67%	inf	55.08%
FRA-6	3.76%	21.21%	-0.49%	-36.36%	46.67%	-33.33%	-50.00%	inf	270.97%
FRA-7	0.38%	53.33%	-3.77%	50.00%	0.00%	200.00%	inf	inf	122.37%
GI-CHI	4.73%	60.00%	1.17%	123.08%	-37.88%	62.50%	-75.00%	300.00%	106.09%
LAM-1	21.07%	94.51%	13.79%	272.22%	28.57%	13.51%		575.00%	546.88%
LAM-2	1.32%	57.73%	-2.66%	-1.45%	-19.57%	2.78%	-100.00%	39.13%	188.11%
LAM-3	4.04%	166.67%	-0.69%	50.00%	0.00%	-50.00%	-100.00%	inf	191.94%
LAM-WAS	2.88%	150.98%	-3.65%	35.29%	-25.00%	63.16%	inf	462.50%	236.97%
ORA-1	1.48%	49.02%	-3.14%	0.00%	84.21%	-21.88%		800.00%	229.10%
ORA-2	-0.52%	100.00%	-6.14%	83.33%	-7.69%	-5.00%	100.00%	283.33%	305.26%
ORA-CAL	1.52%	68.57%	-3.55%	185.71%	118.18%	94.74%	-100.00%	0.00%	226.87%
ORA-WAS -ADD	-1.22%	97.47%	-6.48%	106.90%	36.00%	-2.13%	inf	625.00%	251.38%
ORL-1	-1.14%	74.03%	-4.58%	-14.81%	11.11%	-47.37%	-100.00%	250.00%	206.80%
ORL-2	-1.02%	23.28%	-4.86%	-18.84%	40.38%	73.33%	-100.00%	188.89%	179.29%
ORL-CAL	2.33%	64.71%	-1.82%	-17.78%	231.25%	3.33%	0.00%	106.67%	187.50%

ORL-LAM	1.84%	54.55%	-2.83%	0.00%	80.77%	153.85%		1200.00%	201.56%
RUT-1	-12.60%	10.71%	-16.04%	-76.74%	12.50%	-37.50%	-100.00%	1000.00%	282.61%
RUT-2	-2.12%	74.07%	-7.42%	47.22%	-53.85%	-14.00%	200.00%	1900.00%	389.90%
RUT-3	-2.96%	26.17%	-7.66%	308.00%	33.33%	62.16%	-100.00%	800.00%	244.44%
RUT-4	-4.02%	86.49%	-8.50%	29.41%	360.00%	34.38%		inf	472.73%
RUT-5-1	-0.44%	180.00%	-7.59%	766.67%	16.67%	67.50%	inf	350.00%	330.95%
RUT-5-2	-1.11%	298.18%	-9.36%	53.33%	85.71%	-21.74%	inf	157.14%	192.06%
RUT-5-3	-2.81%	50.00%	-11.72%	55.10%	-13.64%	178.57%	0.00%	450.00%	306.17%
RUT-5-4	-11.08%	4.17%	-15.15%	-19.05%	100.00%	-11.11%	-33.33%	inf	172.60%
RUT-6	-0.39%	138.00%	-6.77%	31.82%	-17.86%	-2.70%		1050.00%	446.99%
RUT-BEN	-0.15%	73.08%	-4.67%	61.11%	-55.56%	40.00%		1100.00%	225.00%
RUT-WDR -1	15.44%	94.00%	11.33%	71.43%	-53.85%	39.47%	inf	214.29%	187.72%
RUT-WDR -2	9.33%	137.50%	4.59%	75.00%	-20.00%	50.00%	300.00%	inf	208.33%
WAS-1	-3.82%	26.64%	-9.50%	136.14%	-11.76%	21.13%	0.00%	242.86%	152.91%
WAS-2	-0.01%	85.47%	-4.93%	20.69%	8.33%	173.68%	inf	328.57%	240.91%
WAS-3	-6.20%	41.51%	-12.44%	25.00%	135.29%	-1.30%	0.00%	916.67%	184.05%
WAS-4	2.79%	52.41%	-2.91%	17.57%	-33.33%	25.60%	200.00%	655.56%	136.09%
WAS-5	2.15%	36.92%	-2.08%	-3.70%	-62.50%	12.50%		2300.00%	198.55%
WAS-6	0.95%	95.92%	-4.21%	65.22%	-41.67%	14.29%	inf	260.00%	202.78%
WAS-7	7.88%	77.27%	3.65%	56.52%	-13.33%	18.87%	0.00%	414.29%	225.26%
WAS-CHI	4.24%	106.33%	-1.04%	38.89%	56.25%	31.34%	133.33%	533.33%	209.84%
WDH-1	-0.60%	50.68%	-5.35%	-17.39%	66.67%	60.00%	inf	180.00%	259.26%
WDH-2-1	4.92%	44.83%	-2.66%	75.68%	41.67%	25.93%	-100.00%	425.00%	261.73%
WDH-2-2	-0.64%	40.60%	-5.61%	10.75%	0.00%	20.99%		122.22%	69.91%
WDH-2-3	-1.16%	17.65%	-5.16%	-9.72%	-54.55%	-32.33%	0.00%	11.76%	220.78%
WDH-3	-7.70%	59.46%	-11.76%	51.28%	-31.25%	-18.00%	-83.33%	766.67%	104.24%
WDH-4	-2.79%	44.52%	-7.84%	16.36%	-10.00%	-4.69%	-50.00%	427.27%	201.74%
WDH-5	16.48%	113.43%	8.88%	164.00%	-30.77%	108.33%	-100.00%	616.67%	304.08%
WDH-6	10.46%	162.79%	4.22%	41.67%	-25.00%	28.57%	-33.33%	1500.00%	438.89%
WDH-BEN	16.89%	126.32%	12.59%	52.63%	300.00%	163.64%	-50.00%	1300.00%	191.11%
WDH-BEN -WDR	18.81%	182.50%	13.97%	-9.09%	9.09%	37.93%	100.00%	600.00%	244.64%
WDR-1	3.78%	37.72%	-0.92%	53.13%	69.23%	5.00%	33.33%	840.00%	219.33%
WDR-2	1.00%	31.48%	-3.96%	46.15%	50.00%	-30.43%		700.00%	338.00%

WDR-3-1	-1.24%	124.39%	-6.01%	90.00%	-27.78%	5.88%		inf	319.44%
WDR-3-2	-3.56%	16.78%	-7.63%	40.54%	105.88%	17.65%	200.00%	311.11%	138.22%
WDR-4-1	12.89%	137.21%	7.29%	111.76%	114.29%	-15.15%		1300.00%	272.00%
WDR-4-2	3.55%	104.17%	-2.33%	73.02%	-37.50%	8.33%	-50.00%	400.00%	217.29%
WDR-5	0.00%	165.71%	-3.69%	40.00%	-41.67%	5.56%	-100.00%	533.33%	181.82%
WDR-ORA -1	0.74%	8.70%	-3.51%	-17.65%	-50.00%	0.00%	50.00%	300.00%	319.23%
WDR-ORA -2	4.92%	98.04%	-0.30%	1.85%	33.33%	-0.85%	-100.00%	331.25%	195.24%
WDR-RUT	-4.03%	102.00%	-8.27%	5.56%	-81.82%	-4.17%	0.00%	inf	146.48%

¹American Indian and Alaska Native Alone, not Latino

²Native Hawaiian and Pacific Islander Alone, not Latino

Variable Definitions

District shapefiles were retrieved from the Redistricting Data Hub, All About Redistricting, and the U.S. Census. The list of variables below can be found in the P1 and P2 table of the PL 94-171. Data was retrieved from the Redistricting Data Hub processed legacy file of the PL 94-171.

Variable Name in Report	Census Variable Reference
Total Population	P0010001
Hispanic or Latino Origin	P0020002
White Alone, not Latino	P0020005
African American Alone, not Latino	P0020006
American Indian and Alaska Native Alone, not Latino	P0020007
Asian Alone, not Latino	P0020008
Native Hawaiian and Pacific Islander Alone, not Latino	P0020009
Other Alone, not Latino	P0020010
Two or More, not Latino	P0020011