

HAYSTAQ DNA

South Carolina

Overview	1
Congressional	2
Total Population	3
Population by Race and Ethnicity	5
State Senate	10
Total Population	10
Population by Race and Ethnicity	13
Charleston	17
Columbia	22
Greenville	27
State House	37
Total Population	38
Population by Race and Ethnicity	43
Charleston	47
Columbia	52
Greenville	57
Rock Hill	62
Variable definitions	79

Overview

South Carolina's population grew by 10.66% this decade. Much of this growth occurred in district 1 which encompasses Charleston and Beaufort. District 6 which lies between the southern coast and central SC was the only district to experience population loss. South Carolina will keep its 7 congressional seats after this redistricting cycle.

The state's White population grew 7.28% but their overall share of the population fell from 64.05% to 62.10%. District 1 experienced the most growth increasing by 20%.

The Hispanic population in the state grew 49.71%. They now make up 6.89% of the state's population, up from 5.10%. Every district saw at least a 30% increase in its hispanic population. Districts 1, 3, and 5 saw increases over 50%.

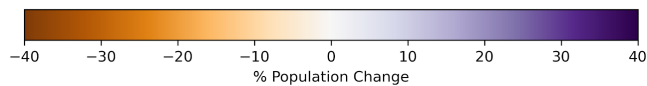
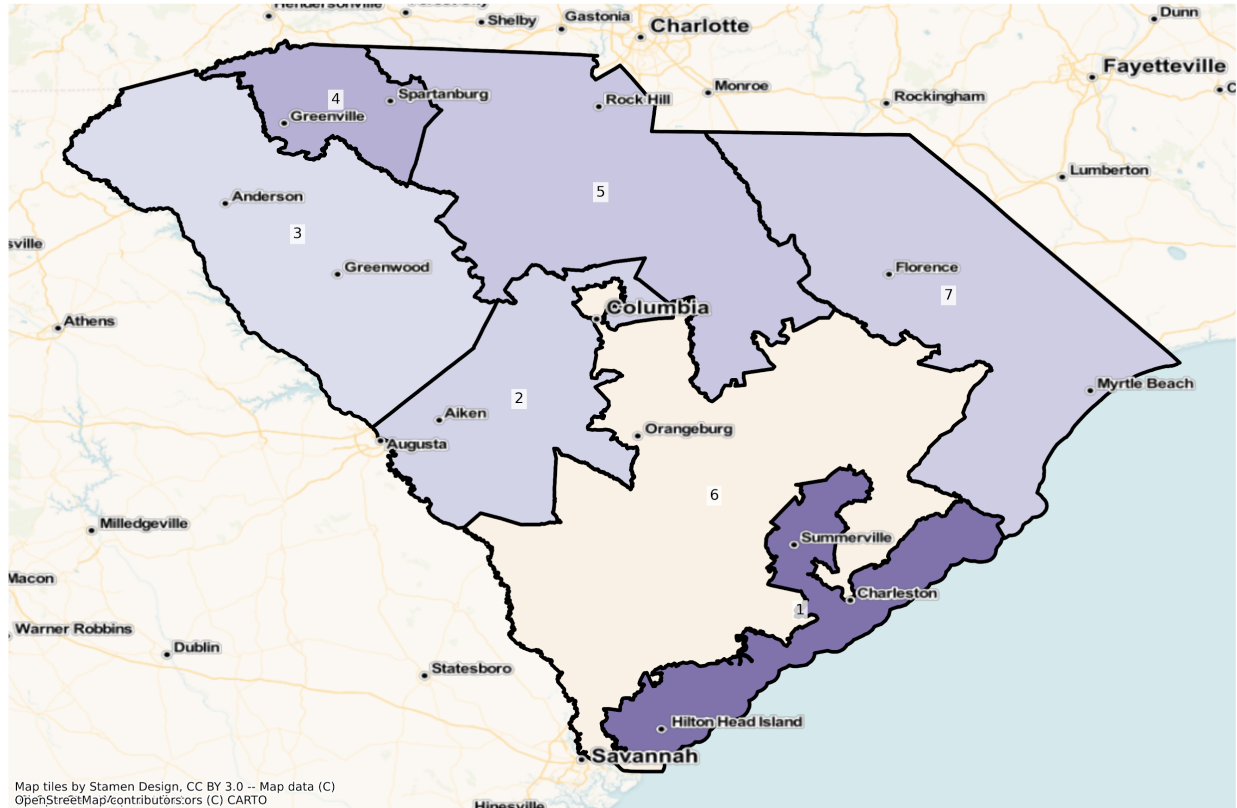
The state's African American population fell by .86%. There was a population shift as the population fell from district 6 and increased in district 2. The African American makeup of the state fell from 27.67% to 24.79%.

Congressional

The charts below display the percent change in population from 2010 to 2020 for the listed group. Please note that the color bars are fixed to be from -40% to 40% and these maps are displayed in brown to purple. If the percent change in population was outside of this range, the color scheme changes to red to green to indicate a change.

Total Population

SC Congressional Districts
Population % Change from 2010 to 2020
Total Population

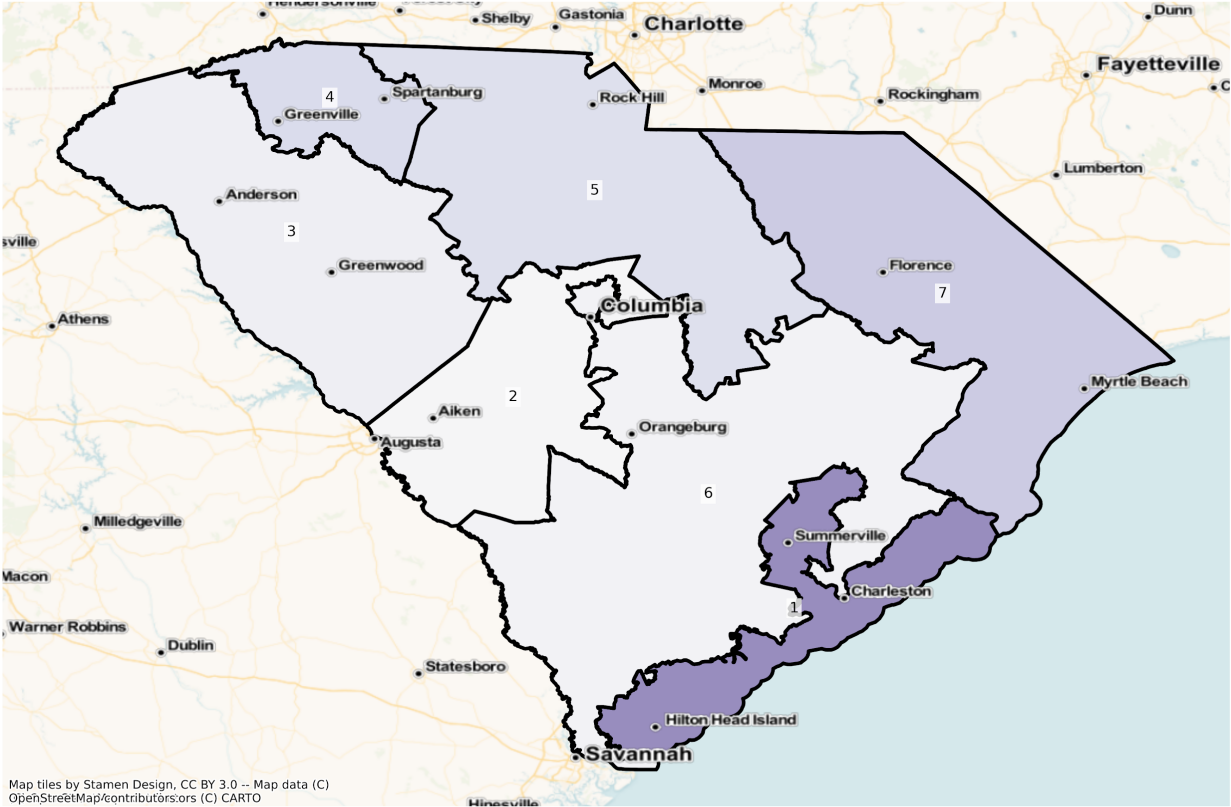


Total Population from 2010 to 2020 at Congressional District Level

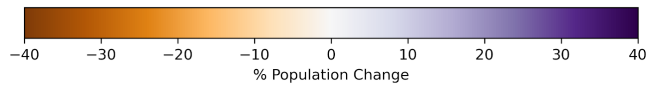
DISTRICT	Total Population 2010	Total Population 2020	Total Population % Change
1	660,766	818,747	23.91%
2	660,766	721,835	9.24%
3	660,758	706,927	6.99%
4	660,775	760,114	15.03%
5	660,766	736,257	11.42%
6	660,766	646,609	-2.14%
7	660,767	727,936	10.17%

Population by Race and Ethnicity

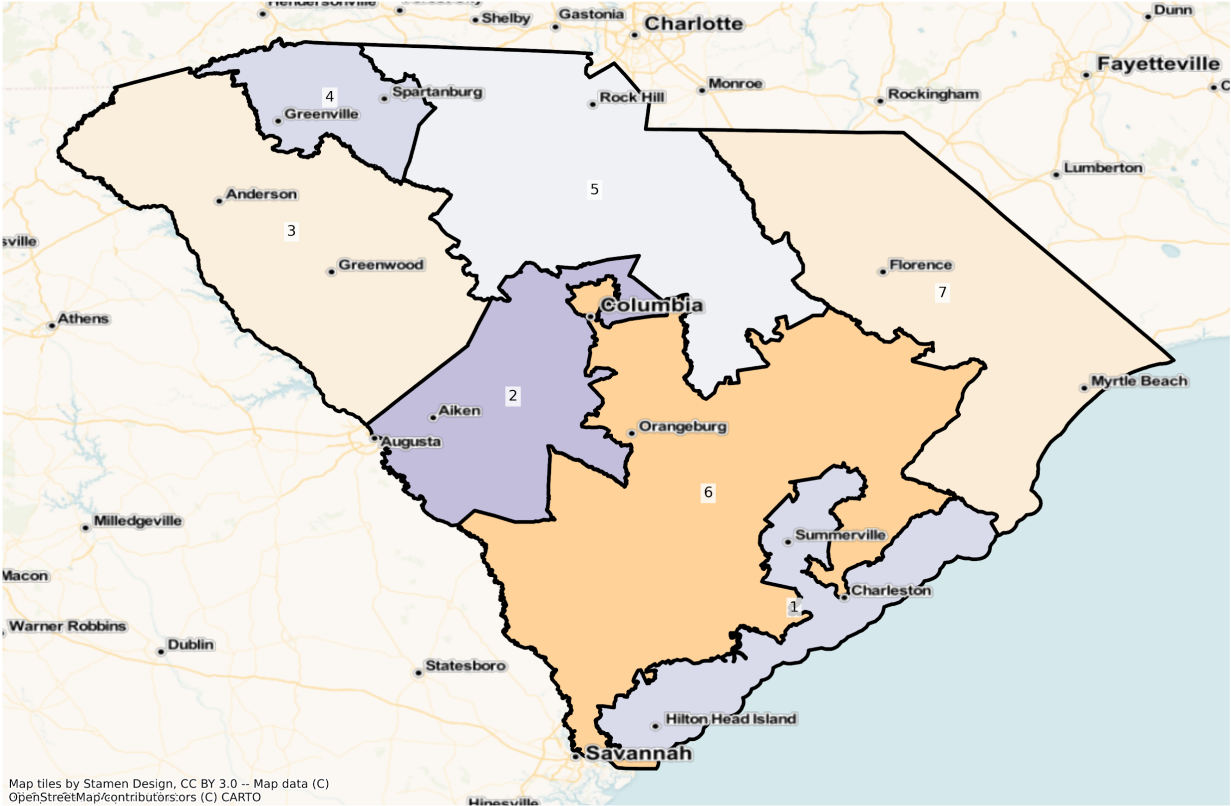
SC Congressional Districts
Population % Change from 2010 to 2020
Ethnicity: Not Latino White alone



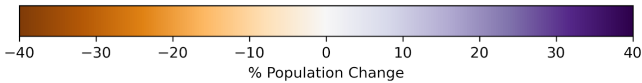
Map tiles by Stamen Design, CC BY 3.0 -- Map data (C) OpenStreetMap/contributors/ors (C) CARTO



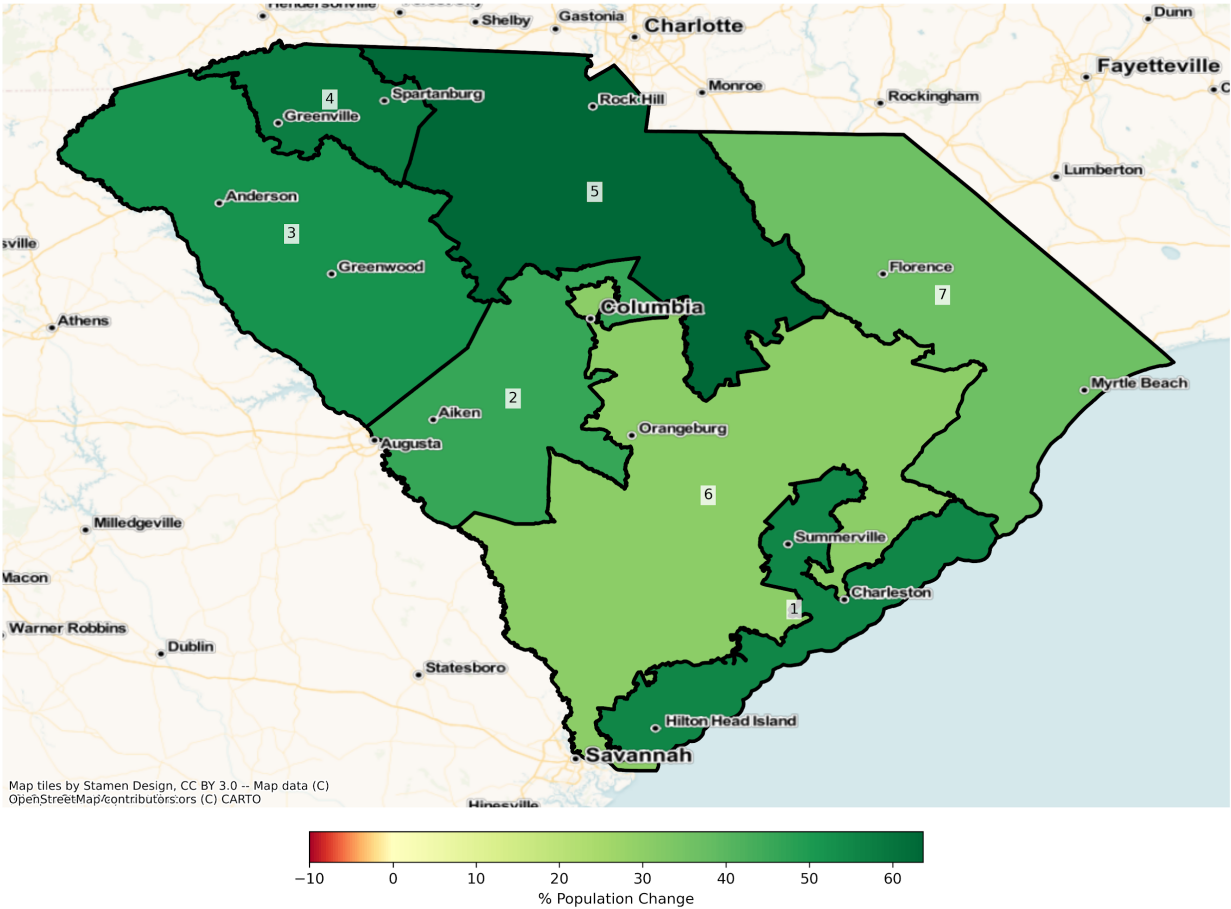
SC Congressional Districts
Population % Change from 2010 to 2020
Ethnicity: Not Latino African American alone



Map tiles by Stamen Design, CC BY 3.0 -- Map data (C) OpenStreetMap/contributors/ors (C) CARTO



SC Congressional Districts
 Population % Change from 2010 to 2020
 Ethnicity: Hispanic or Latino



2010 Population by Race and Ethnicity at Congressional District Level

DISTRICT	Total Population	Hispanic or Latino Origin	White Alone, not Latino	African American Alone, not Latino	AIAN Alone, not Latino ¹	Asian Alone, not Latino	NHPI Alone, not Latino ²	Other Alone, not Latino	Two or More, not Latino
1	660,766	42,987	463,312	128,090	2,117	11,239	489	1,226	11,306
2	660,766	34,355	450,818	150,558	2,344	10,633	419	911	10,728
3	660,758	27,747	495,131	122,803	1,369	5,058	134	631	7,885
4	660,775	48,908	462,052	124,540	1,304	13,746	272	946	9,007
5	660,766	24,976	436,838	179,760	3,015	6,344	213	731	8,889

6	660,766	30,284	234,290	379,176	2,318	5,944	297	576	7,881
7	660,767	26,425	420,299	195,071	4,147	5,343	289	693	8,500

¹American Indian and Alaska Native Alone, Not Latino

²Native Hawaiian and Pacific Islander Alone, Not Latino

2020 Population by Race and Ethnicity at Congressional District Level

DISTRICT	Total Population	Hispanic or Latino Origin	White Alone, not Latino	African American Alone, not Latino	AIAN Alone, not Latino ¹	Asian Alone, not Latino	NHPI Alone, not Latino ²	Other Alone, not Latino	Two or More, not Latino
1	818,747	66,721	556,618	137,870	2,388	16,633	653	4,111	33,753
2	721,835	50,123	452,493	169,379	2,131	15,504	572	2,955	28,678
3	706,927	42,200	507,017	118,939	1,471	7,790	226	2,344	26,940
4	760,114	77,321	495,570	134,011	1,397	19,848	536	3,038	28,393
5	736,257	40,869	464,612	183,047	3,173	13,464	280	2,551	28,261
6	646,609	39,489	237,414	338,301	2,295	8,236	424	2,061	18,389
7	727,936	36,115	464,828	187,484	3,736	7,919	394	2,294	25,166

¹American Indian and Alaska Native Alone, Not Latino

²Native Hawaiian and Pacific Islander Alone, Not Latino

Percent Change in Population from 2010 to 2020 by Race and Ethnicity at Congressional District Level

DISTRICT	Total Population	Hispanic or Latino Origin	White Alone, not Latino	African American Alone, not Latino	AIAN Alone, not Latino ¹	Asian Alone, not Latino	NHPI Alone, not Latino ²	Other Alone, not Latino	Two or More, not Latino
1	23.91%	55.21%	20.14%	7.64%	12.80%	47.99%	33.54%	235.32%	198.54%
2	9.24%	45.90%	0.37%	12.50%	-9.09%	45.81%	36.52%	224.37%	167.32%
3	6.99%	52.09%	2.40%	-3.15%	7.45%	54.01%	68.66%	271.47%	241.66%
4	15.03%	58.09%	7.25%	7.60%	7.13%	44.39%	97.06%	221.14%	215.23%
5	11.42%	63.63%	6.36%	1.83%	5.24%	112.23%	31.46%	248.97%	217.93%
6	-2.14%	30.40%	1.33%	-10.78%	-0.99%	38.56%	42.76%	257.81%	133.33%
7	10.17%	36.67%	10.59%	-3.89%	-9.91%	48.21%	36.33%	231.02%	196.07%

¹American Indian and Alaska Native Alone, Not Latino

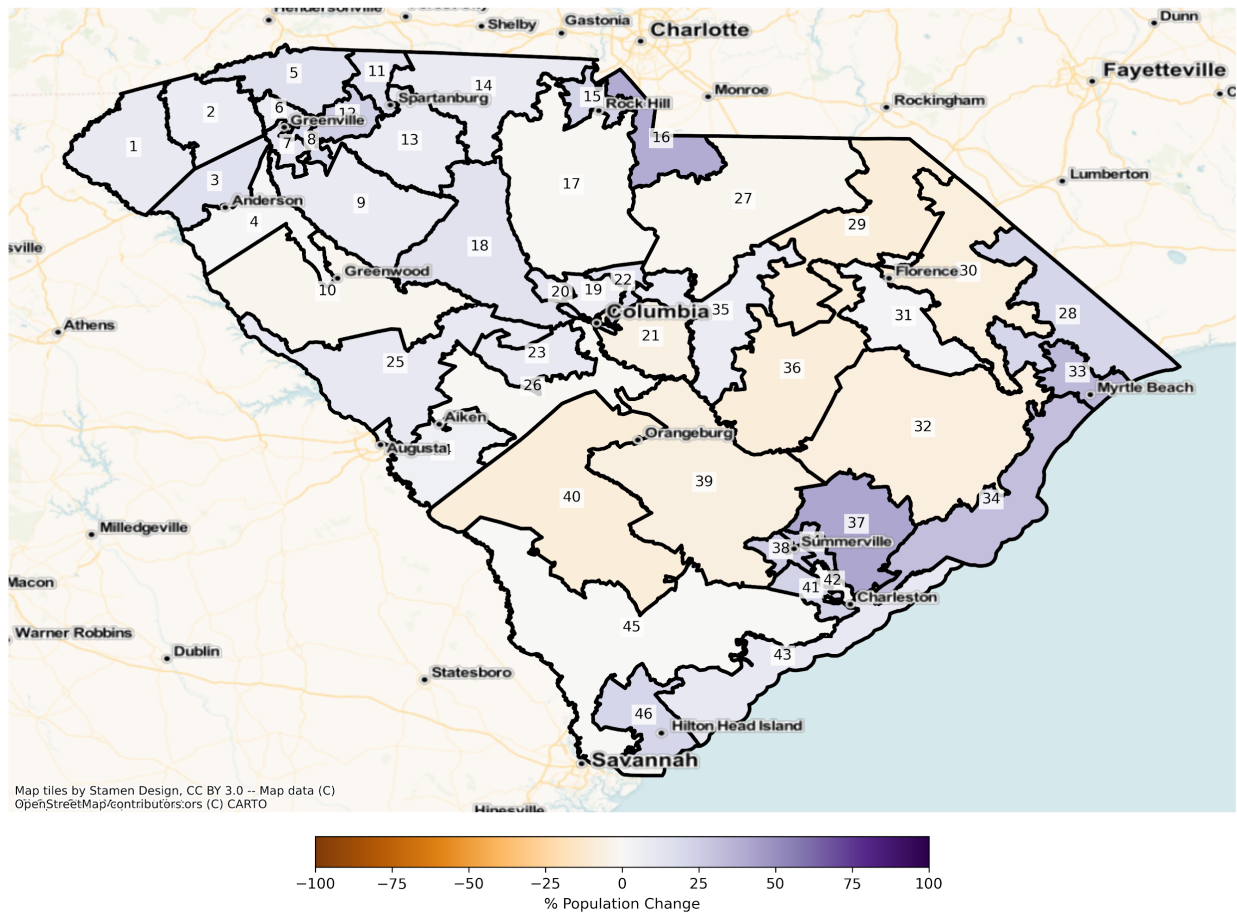
²Native Hawaiian and Pacific Islander Alone, Not Latino

State Senate

The charts below display the percent change in population from 2010 to 2020 for the listed group. Please note that the color bars are fixed to be from -100% to 100% and these maps are displayed in brown to purple. If the percent change in population was outside of this range, the color scheme changes to red to green to indicate a change.

Total Population

SC State Senate Districts
Population % Change from 2010 to 2020
Total Population



Total Population from 2010 to 2020 at State Senate District Level

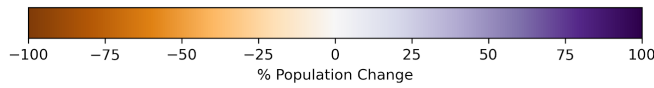
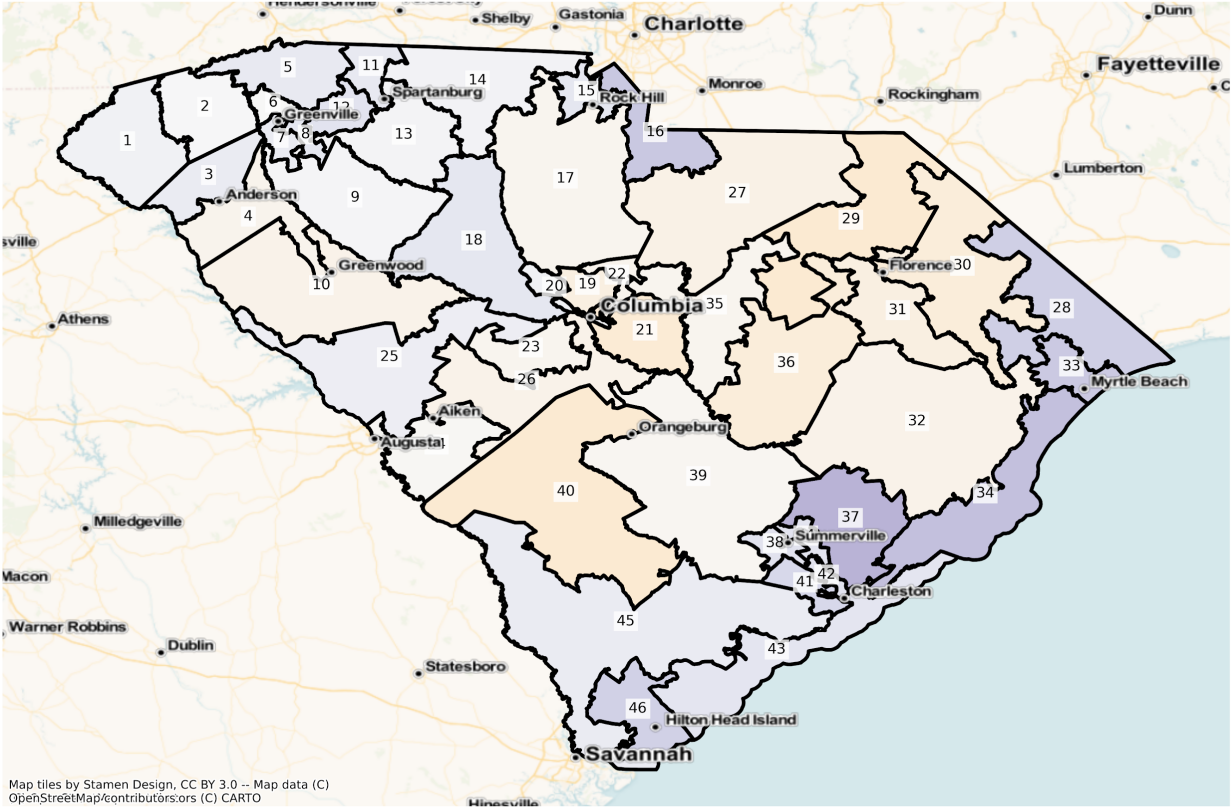
DISTRICT	Total Population 2010	Total Population 2020	Total Population % Change
1	96,584	105,700	9.44%

2	96,904	104,248	7.58%
3	101,647	116,835	14.94%
4	99,549	101,019	1.48%
5	101,105	117,610	16.32%
6	101,187	109,850	8.56%
7	96,172	108,455	12.77%
8	101,609	122,142	20.21%
9	97,193	105,893	8.95%
10	96,580	93,819	-2.86%
11	100,790	116,427	15.51%
12	104,111	129,839	24.71%
13	104,391	113,977	9.18%
14	105,315	114,458	8.68%
15	105,434	128,835	22.19%
16	105,361	147,261	39.77%
17	105,031	104,014	-0.97%
18	100,575	115,251	14.59%
19	100,434	107,467	7.00%
20	100,750	112,764	11.92%
21	100,222	94,140	-6.07%
22	96,987	111,434	14.90%
23	98,169	108,162	10.18%
24	97,230	102,210	5.12%
25	97,186	107,074	10.17%
26	96,764	95,834	-0.96%
27	96,731	93,772	-3.06%
28	97,512	118,820	21.85%
29	96,817	87,743	-9.37%
30	95,998	88,318	-8.00%
31	98,754	101,787	3.07%
32	96,803	89,995	-7.03%

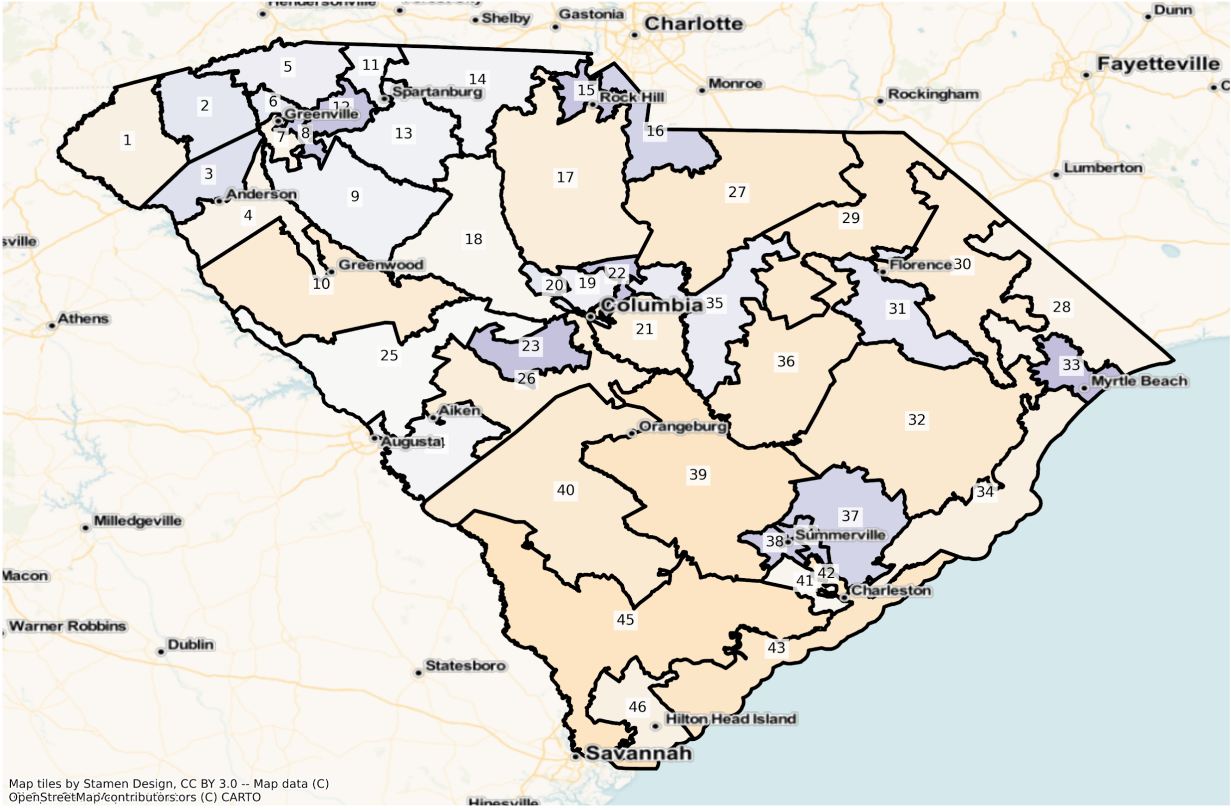
33	103,213	138,283	33.98%
34	103,548	136,286	31.62%
35	97,023	103,934	7.12%
36	97,036	88,687	-8.60%
37	102,484	144,970	41.46%
38	103,698	130,637	25.98%
39	95,926	89,703	-6.49%
40	103,864	94,191	-9.31%
41	105,141	129,583	23.25%
42	103,908	106,382	2.38%
43	105,544	116,911	10.77%
44	104,380	131,340	25.83%
45	104,398	104,227	-0.16%
46	105,306	128,138	21.68%

Population by Race and Ethnicity

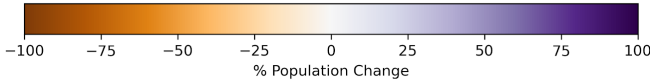
SC State Senate Districts
Population % Change from 2010 to 2020
Ethnicity: Not Latino White alone



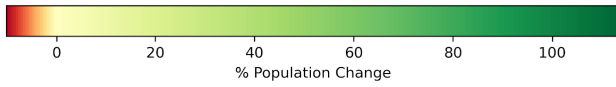
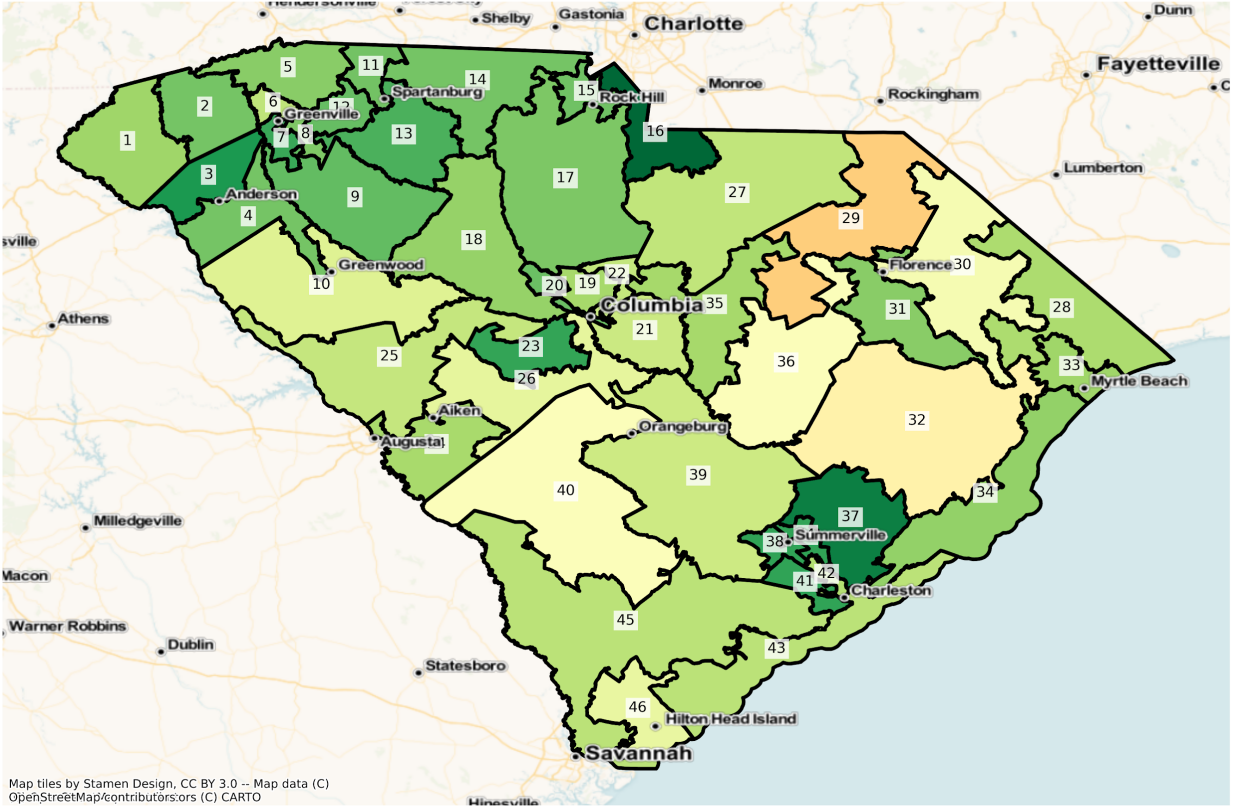
SC State Senate Districts
Population % Change from 2010 to 2020
Ethnicity: Not Latino African American alone



Map tiles by Stamen Design, CC BY 3.0 -- Map data (C) OpenStreetMap/contributors,ors (C) CARTO

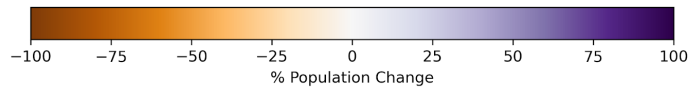
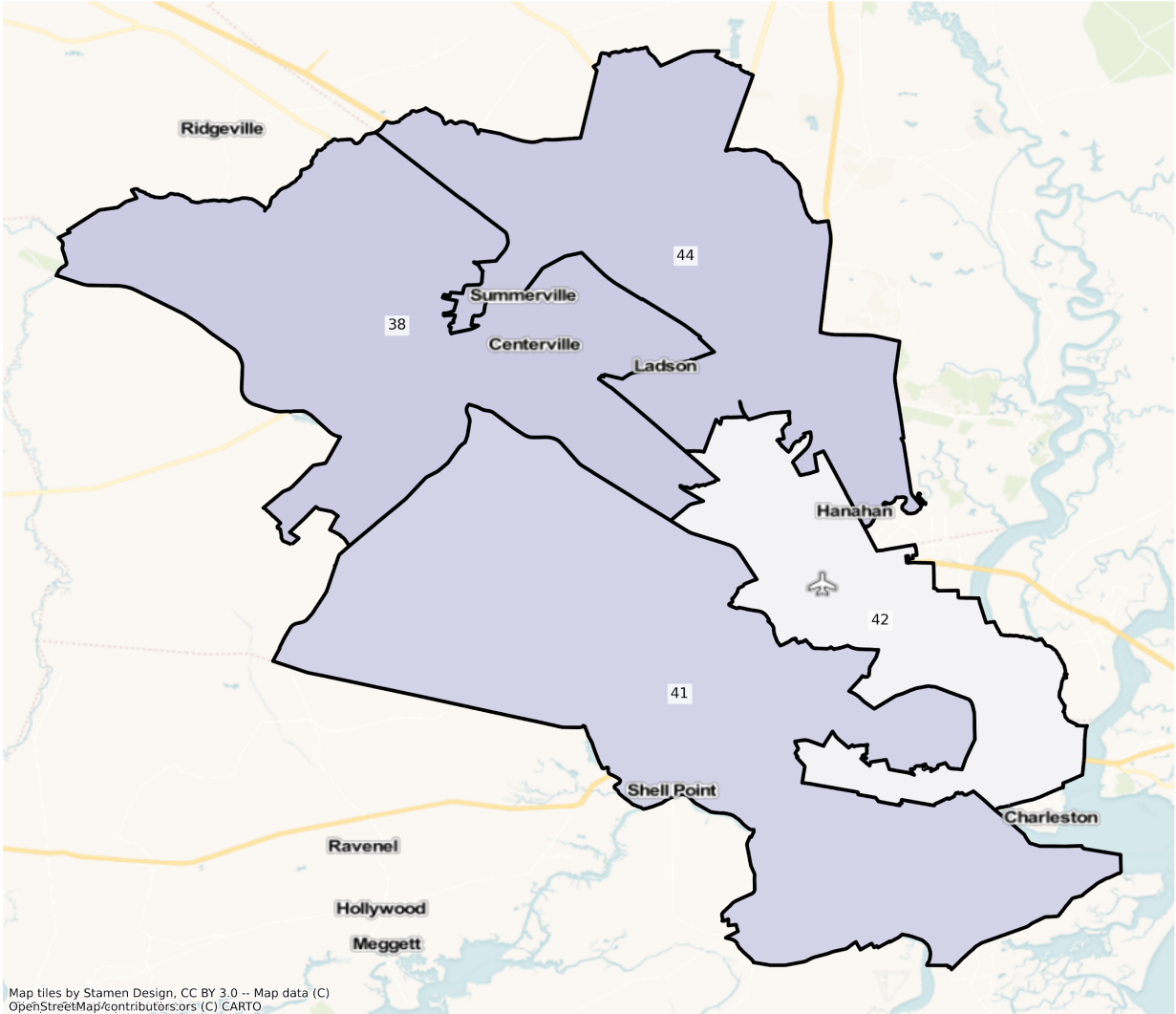


SC State Senate Districts
Population % Change from 2010 to 2020
Ethnicity: Hispanic or Latino

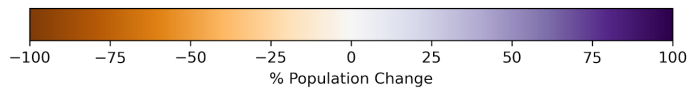
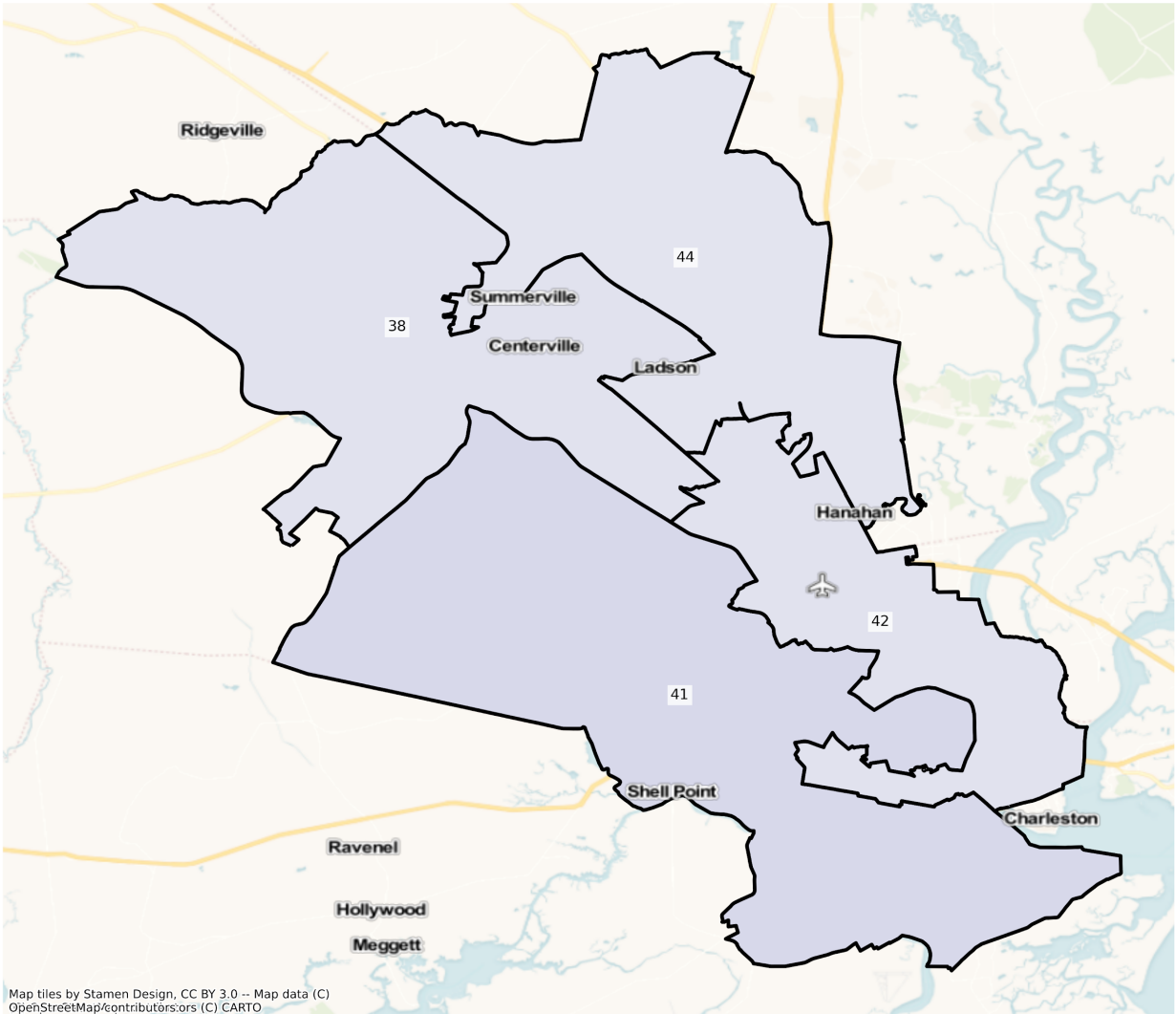


Charleston

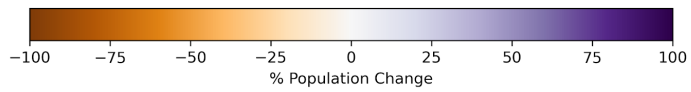
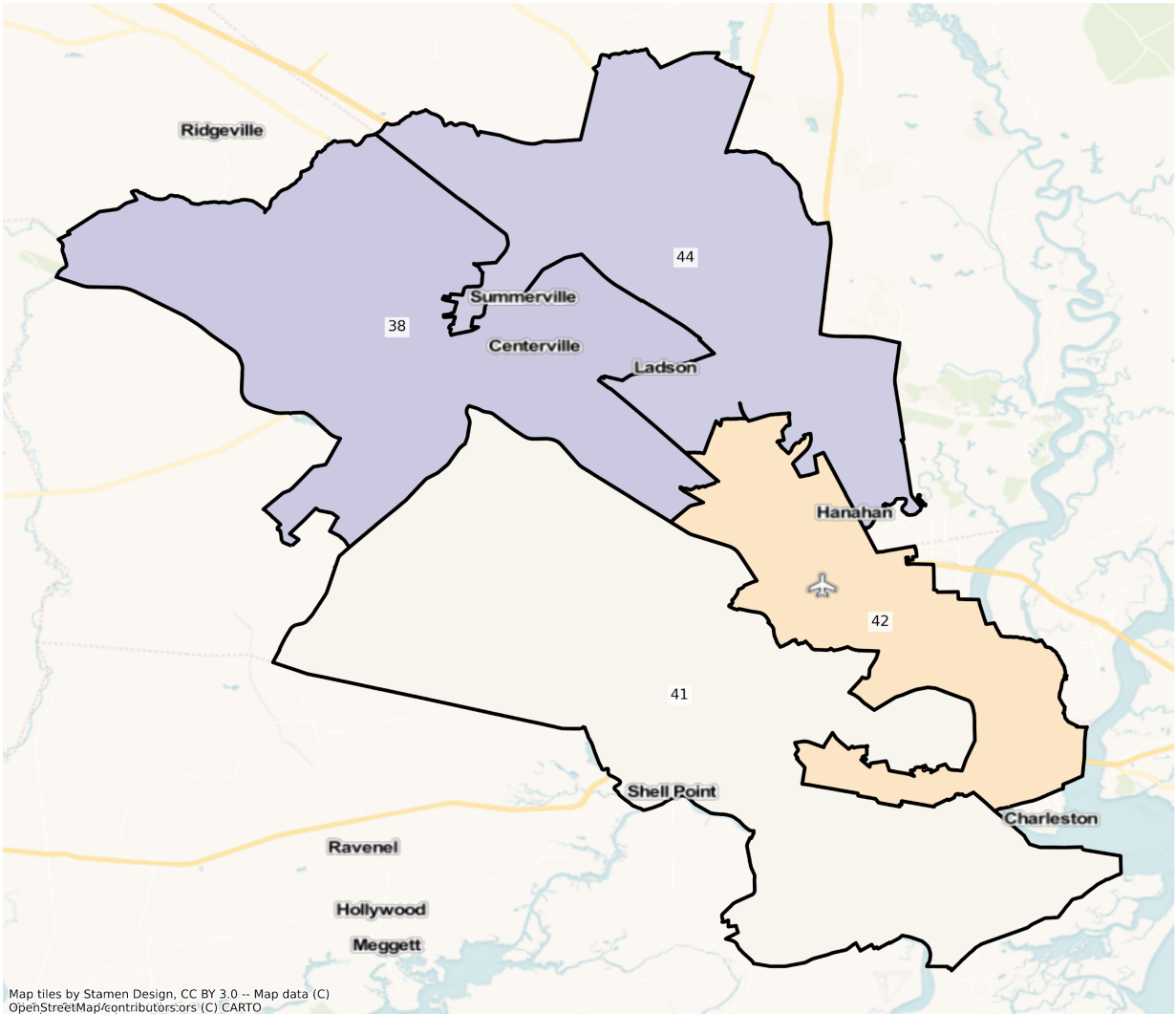
SC Charleston State Senate Districts
Population % Change from 2010 to 2020
Total Population



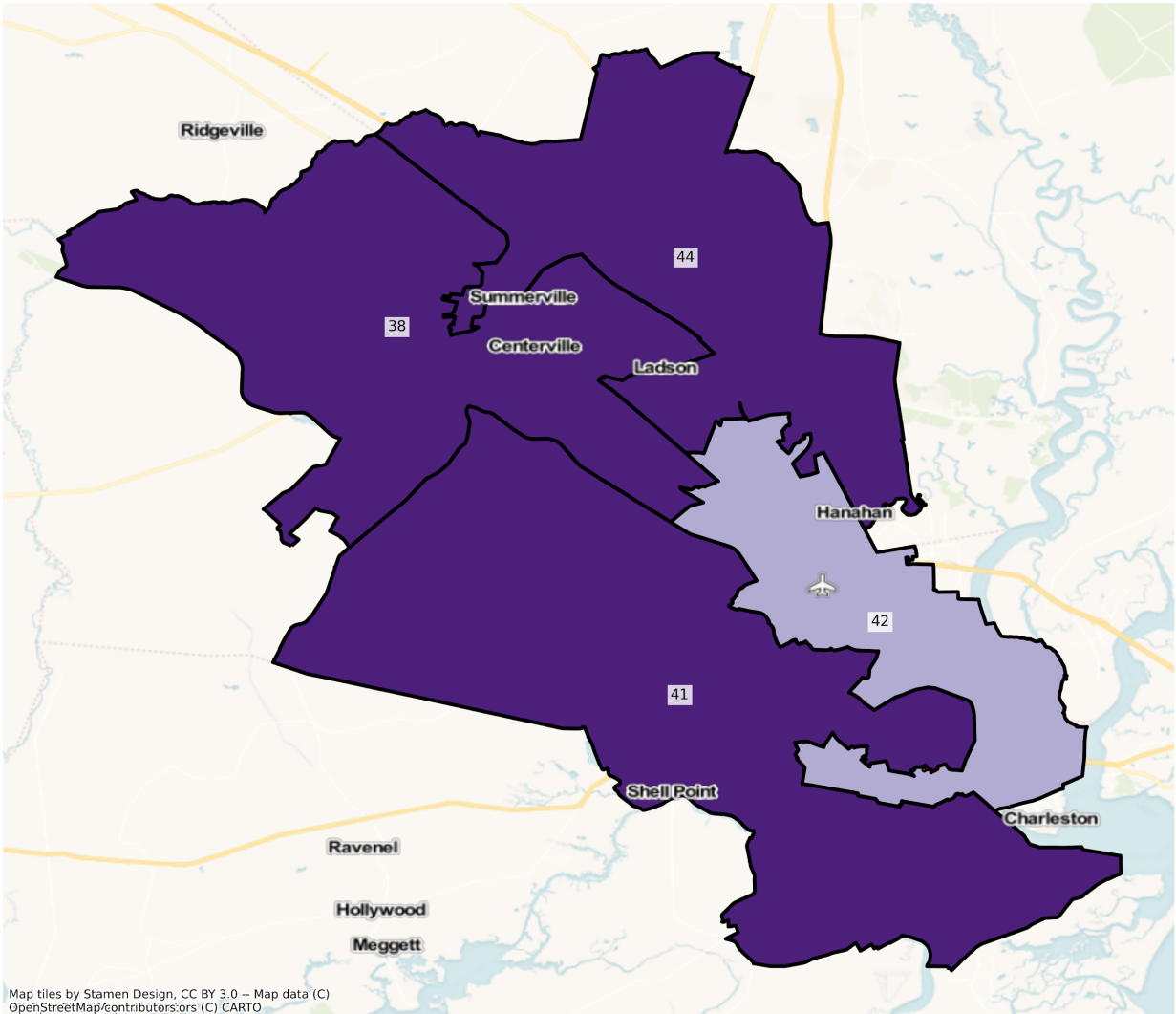
SC Charleston State Senate Districts
Population % Change from 2010 to 2020
Ethnicity: Not Latino White alone



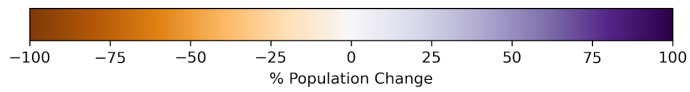
SC Charleston State Senate Districts
Population % Change from 2010 to 2020
Ethnicity: Not Latino African American alone



SC Charleston State Senate Districts
Population % Change from 2010 to 2020
Ethnicity: Hispanic or Latino

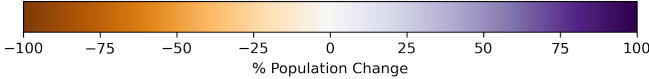
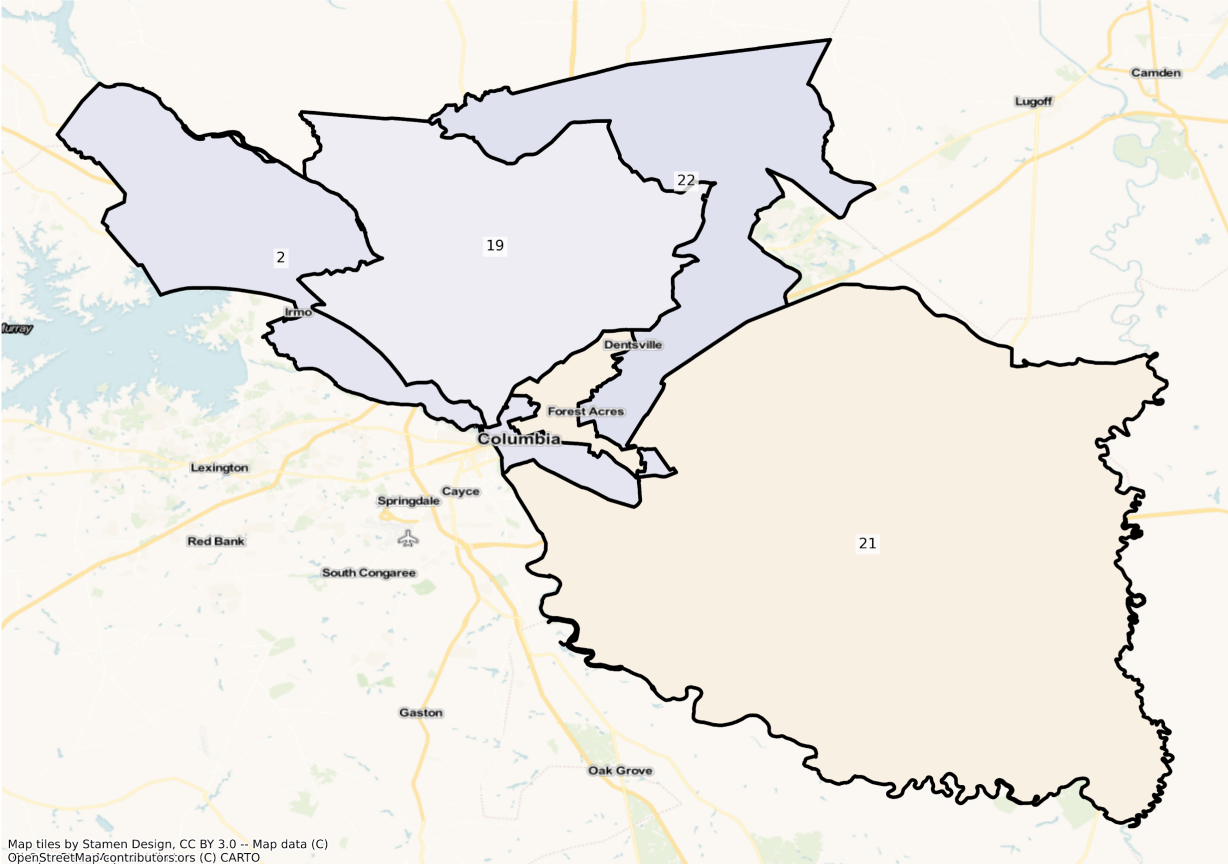


Map tiles by Stamen Design, CC BY 3.0 -- Map data (C)
OpenStreetMap/contributors/ors (C) CARTO

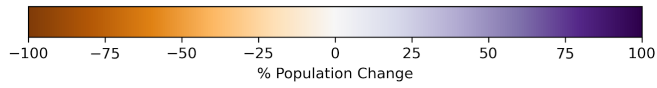
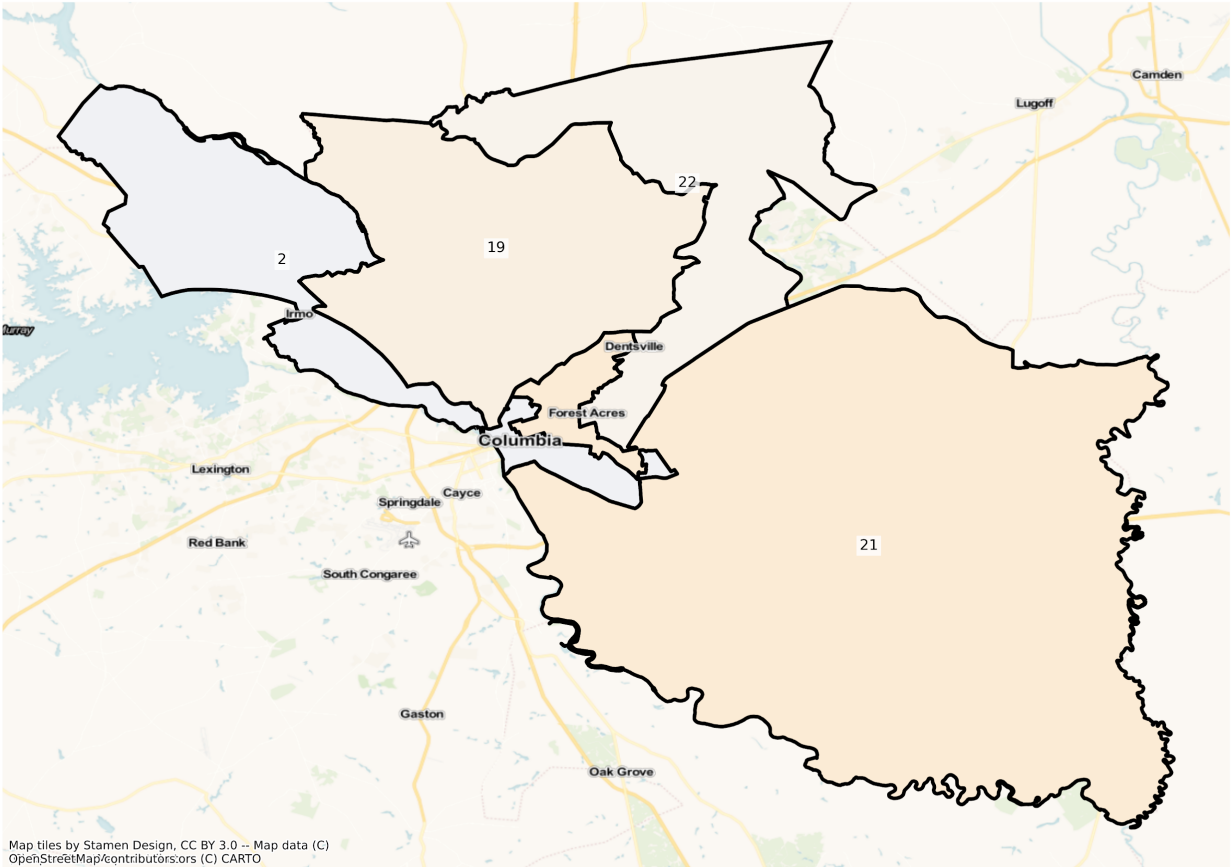


Columbia

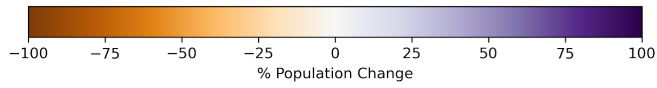
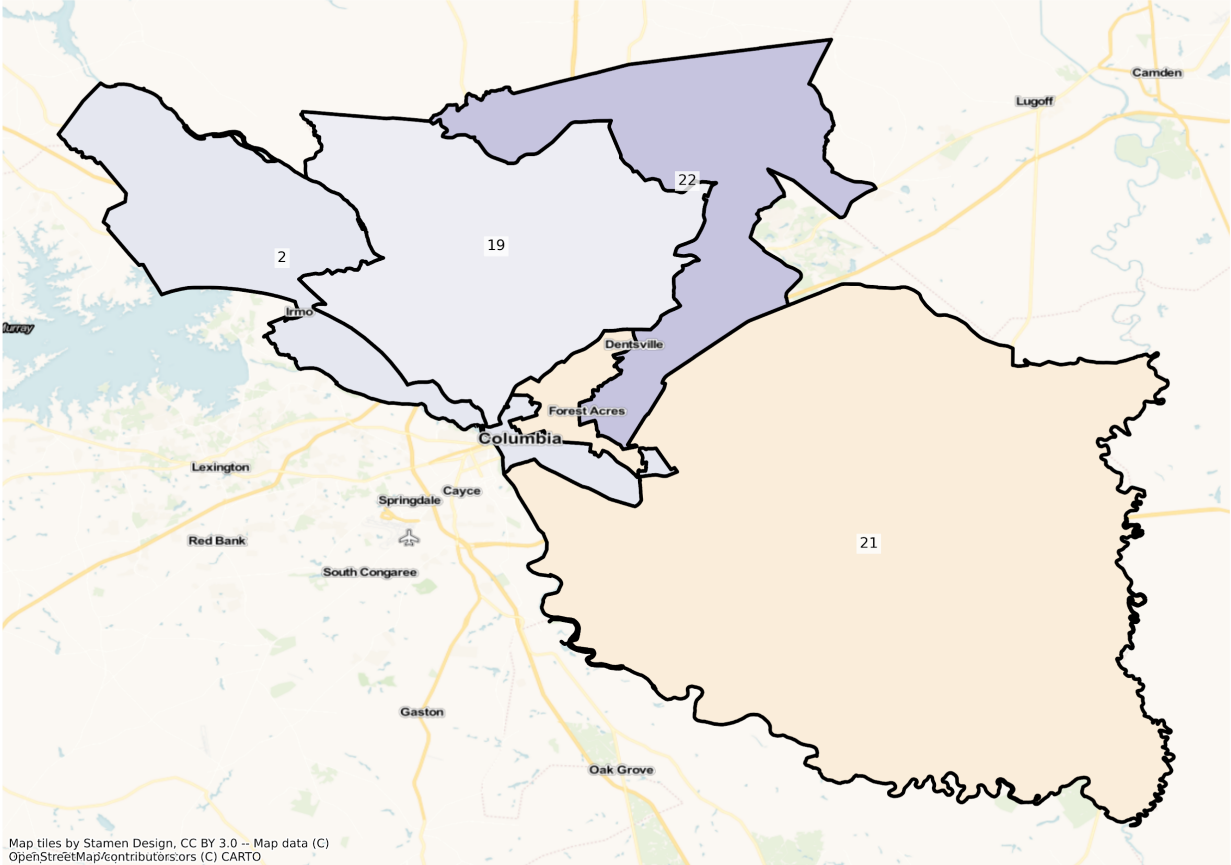
SC Columbia State Senate Districts
Population % Change from 2010 to 2020
Total Population



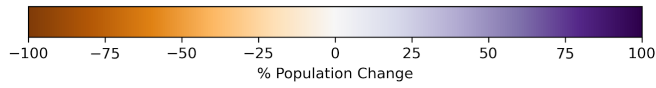
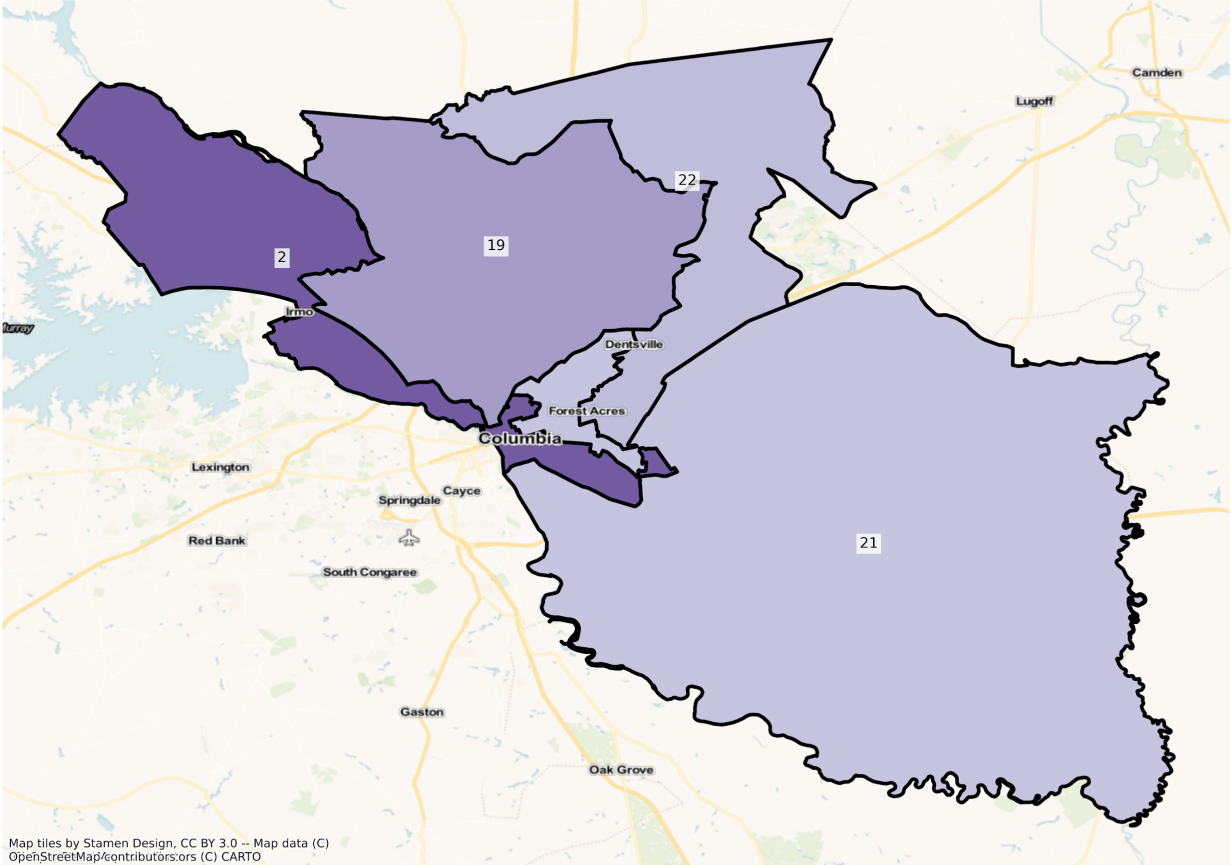
SC Columbia State Senate Districts
Population % Change from 2010 to 2020
Ethnicity: Not Latino White alone



SC Columbia State Senate Districts
Population % Change from 2010 to 2020
Ethnicity: Not Latino African American alone

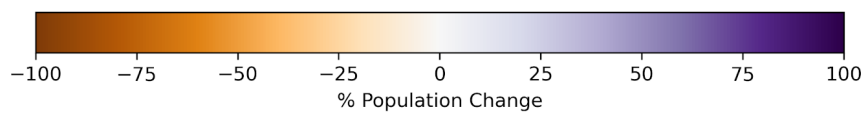


SC Columbia State Senate Districts
Population % Change from 2010 to 2020
Ethnicity: Hispanic or Latino



Greenville

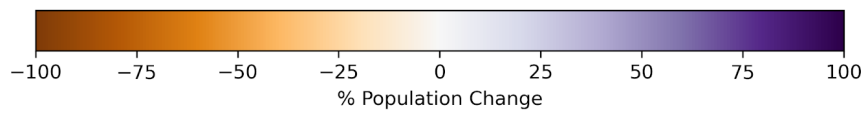
SC Greenville State Senate Districts
Population % Change from 2010 to 2020
Total Population



SC Greenville State Senate Districts
Population % Change from 2010 to 2020
Ethnicity: Not Latino White alone



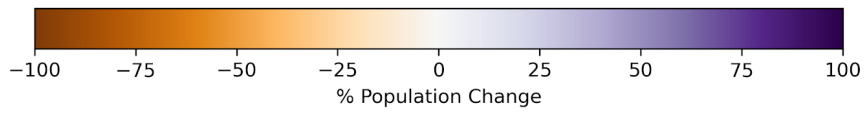
Map tiles by Stamen Design, CC BY 3.0 -- Map data
(C) OpenStreetMap contributors (C) CARTO



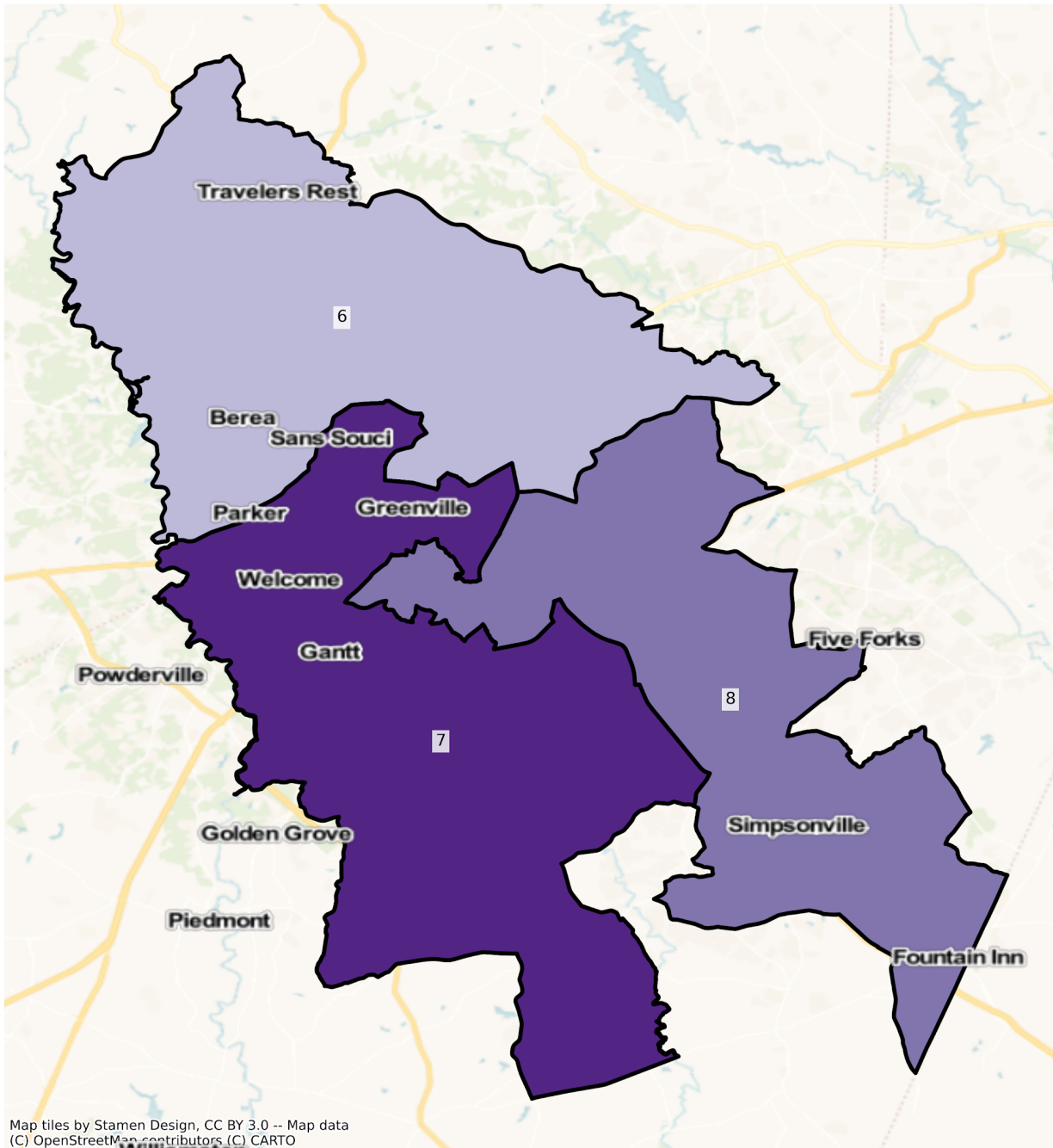
SC Greenville State Senate Districts
Population % Change from 2010 to 2020
Ethnicity: Not Latino African American alone



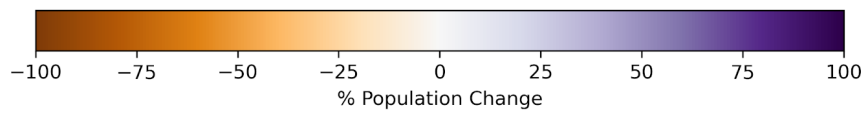
Map tiles by Stamen Design, CC BY 3.0 -- Map data
(C) OpenStreetMap contributors (C) CARTO



SC Greenville State Senate Districts
Population % Change from 2010 to 2020
Ethnicity: Hispanic or Latino



Map tiles by Stamen Design, CC BY 3.0 -- Map data
(C) OpenStreetMap contributors (C) CARTO



2010 Population by Race and Ethnicity at State Senate District Level

DISTRICT	Total Population	Hispanic or Latino Origin	White Alone, not Latino	African American Alone, not Latino	AIAN Alone, not Latino ¹	Asian Alone, not Latino	NHPI Alone, not Latino ²	Other Alone, not Latino	Two or More, not Latino
1	96,584	3,825	81,878	7,660	181	1,717	10	68	1,245
2	96,904	3,267	85,879	5,681	181	604	12	91	1,189
3	101,647	2,757	85,430	10,628	215	1,183	24	121	1,289
4	99,549	2,906	73,752	20,874	224	392	6	71	1,324
5	101,105	5,992	84,585	7,923	205	981	26	153	1,240
6	101,187	11,867	74,762	10,709	242	2,025	87	140	1,355
7	96,172	10,062	40,934	42,579	183	695	30	129	1,560
8	101,609	5,981	77,433	13,826	192	2,397	64	187	1,529
9	97,193	4,217	70,283	20,842	206	369	35	103	1,138
10	96,580	6,167	55,537	33,137	199	490	24	110	916
11	100,790	6,894	62,009	28,010	207	2,170	19	131	1,350
12	104,111	7,004	75,820	15,255	186	4,291	29	144	1,382
13	104,391	3,573	76,789	20,921	212	1,505	25	104	1,262
14	105,315	3,388	83,152	16,225	311	860	14	83	1,282
15	105,434	5,619	77,228	18,219	717	1,784	36	139	1,692
16	105,361	5,250	78,508	18,248	307	1,580	35	151	1,282
17	105,031	2,415	55,568	44,130	964	361	14	103	1,476
18	100,575	4,367	75,773	17,670	244	1,364	35	110	1,012
19	100,434	3,952	27,009	65,989	237	1,395	71	142	1,639
20	100,750	3,169	72,661	20,088	254	2,740	50	159	1,629
21	100,222	4,729	37,022	54,852	295	1,333	143	104	1,744
22	96,987	6,882	48,244	36,171	224	3,216	124	190	1,936
23	98,169	5,073	78,612	11,488	461	817	26	111	1,581
24	97,230	4,527	71,061	18,590	345	1,093	27	113	1,474
25	97,186	5,414	67,035	22,629	271	538	32	95	1,172

26	96,764	7,126	57,294	29,524	398	811	43	123	1,445
27	96,731	3,120	62,145	29,510	348	326	18	100	1,164
28	97,512	4,150	70,019	20,928	479	503	29	65	1,339
29	96,817	1,940	45,939	46,245	1,255	317	10	60	1,051
30	95,998	2,221	37,567	53,485	1,189	319	13	63	1,141
31	98,754	2,227	65,303	28,286	284	1,520	18	101	1,015
32	96,803	2,687	37,735	54,965	258	359	4	74	721
33	103,213	8,709	78,657	11,776	375	1,430	122	258	1,886
34	103,548	4,385	85,870	10,433	292	1,107	92	81	1,288
35	97,023	3,794	56,403	33,006	341	1,506	88	133	1,752
36	97,036	2,775	41,388	51,156	225	495	46	64	887
37	102,484	4,559	74,165	19,936	419	1,598	89	119	1,599
38	103,698	5,641	70,958	22,186	503	1,611	103	156	2,540
39	95,926	1,888	40,237	51,544	911	254	13	60	1,019
40	103,864	2,198	45,217	53,925	368	948	15	57	1,136
41	105,141	3,866	78,279	19,089	231	1,911	114	134	1,517
42	103,908	9,495	33,973	57,061	281	1,268	99	162	1,569
43	105,544	4,333	81,224	17,127	230	1,194	52	117	1,267
44	104,380	7,863	66,664	22,559	543	3,319	87	497	2,848
45	104,398	8,028	41,293	53,085	278	467	36	93	1,118
46	105,306	15,380	75,446	11,828	143	1,144	24	145	1,196

¹American Indian and Alaska Native Alone, Not Latino

²Native Hawaiian and Pacific Islander Alone, Not Latino

2020 Population by Race and Ethnicity at State Senate District Level

DISTRICT	Total Population	Hispanic or Latino Origin	White Alone, not Latino	African American Alone, not Latino	AIAN Alone, not Latino ¹	Asian Alone, not Latino	NHPI Alone, not Latino ²	Other Alone, not Latino	Two or More, not Latino
1	105,700	5,629	85,469	7,205	232	2,327	24	283	4,531
2	104,248	5,312	86,445	6,332	248	986	29	325	4,571
3	116,835	5,234	92,118	12,295	209	2,091	29	432	4,427

4	101,019	4,722	71,256	19,921	234	572	26	307	3,981
5	117,610	9,316	92,602	8,477	225	1,856	43	409	4,682
6	109,850	15,939	74,585	11,939	202	2,537	128	474	4,046
7	108,455	18,236	44,257	40,429	165	999	72	467	3,830
8	122,142	9,495	85,996	17,652	181	3,415	123	588	4,692
9	105,893	7,136	71,534	21,781	214	733	38	424	4,033
10	93,819	7,317	53,226	29,564	153	521	40	242	2,756
11	116,427	11,294	68,052	29,196	239	3,059	44	392	4,151
12	129,839	11,760	86,211	19,707	244	6,201	65	550	5,101
13	113,977	6,273	78,761	21,821	252	2,326	93	377	4,074
14	114,458	5,504	86,005	16,792	364	1,128	33	377	4,255
15	128,835	9,216	86,011	23,611	799	3,428	60	543	5,167
16	147,261	11,215	100,579	22,441	360	6,255	32	562	5,817
17	104,014	3,855	54,180	40,136	976	545	42	380	3,900
18	115,251	6,615	84,324	17,118	269	2,753	59	307	3,806
19	107,467	5,741	25,227	70,149	216	1,988	112	462	3,572
20	112,764	5,265	75,738	22,424	200	4,023	93	436	4,585
21	94,140	6,112	33,135	49,859	266	1,600	97	355	2,716
22	111,434	9,088	46,622	46,630	241	3,798	155	639	4,261
23	108,162	9,270	76,505	14,977	437	1,428	43	440	5,062
24	102,210	6,497	70,428	19,142	274	1,371	52	415	4,031
25	107,074	7,119	71,517	22,623	350	1,067	48	357	3,993
26	95,834	8,183	54,915	26,886	310	1,378	44	362	3,756
27	93,772	4,169	59,198	26,021	299	454	7	300	3,324
28	118,820	5,890	87,179	19,896	519	745	75	327	4,189
29	87,743	1,887	40,907	40,706	1,099	407	10	164	2,563
30	88,318	2,357	34,139	47,746	924	271	16	242	2,623
31	101,787	3,466	61,047	31,756	236	2,155	32	230	2,865
32	89,995	2,665	36,075	48,451	217	379	23	199	1,986
33	138,283	12,813	99,792	15,526	468	2,549	99	809	6,227
34	136,286	6,660	112,531	9,733	285	1,776	146	402	4,753

35	103,934	5,478	54,854	35,957	288	2,065	106	413	4,773
36	88,687	2,829	37,511	44,892	302	510	40	186	2,417
37	144,970	9,244	101,123	24,367	450	2,985	119	667	6,015
38	130,637	10,366	81,235	28,179	569	2,698	148	656	6,786
39	89,703	2,421	39,511	43,706	855	313	24	210	2,663
40	94,191	2,253	39,943	47,748	360	1,109	56	254	2,468
41	129,583	7,108	94,707	18,619	252	3,073	161	533	5,130
42	106,382	13,241	38,882	48,219	269	1,808	114	449	3,400
43	116,911	5,906	90,840	14,596	199	1,502	53	361	3,454
44	131,340	14,477	75,105	28,279	661	4,007	90	1,271	7,450
45	104,227	10,914	44,605	44,406	275	636	89	338	2,964
46	128,138	17,351	93,670	11,121	204	1,567	53	438	3,734

¹American Indian and Alaska Native Alone, Not Latino

²Native Hawaiian and Pacific Islander Alone, Not Latino

Percent Change in Population from 2010 to 2020 by Race and Ethnicity at State Senate District Level

DISTRICT	Total Population	Hispanic or Latino Origin	White Alone, not Latino	African American Alone, not Latino	AIAN Alone, not Latino ¹	Asian Alone, not Latino	NHPI Alone, not Latino ²	Other Alone, not Latino	Two or More, not Latino
1	9.44%	47.16%	4.39%	-5.94%	28.18%	35.53%	140.00%	316.18%	263.94%
2	7.58%	62.60%	0.66%	11.46%	37.02%	63.25%	141.67%	257.14%	284.44%
3	14.94%	89.84%	7.83%	15.68%	-2.79%	76.75%	20.83%	257.02%	243.44%
4	1.48%	62.49%	-3.38%	-4.57%	4.46%	45.92%	333.33%	332.39%	200.68%
5	16.32%	55.47%	9.48%	6.99%	9.76%	89.19%	65.38%	167.32%	277.58%
6	8.56%	34.31%	-0.24%	11.49%	-16.53%	25.28%	47.13%	238.57%	198.60%
7	12.77%	81.24%	8.12%	-5.05%	-9.84%	43.74%	140.00%	262.02%	145.51%
8	20.21%	58.75%	11.06%	27.67%	-5.73%	42.47%	92.19%	214.44%	206.87%
9	8.95%	69.22%	1.78%	4.51%	3.88%	98.64%	8.57%	311.65%	254.39%
10	-2.86%	18.65%	-4.16%	-10.78%	-23.12%	6.33%	66.67%	120.00%	200.87%
11	15.51%	63.82%	9.75%	4.23%	15.46%	40.97%	131.58%	199.24%	207.48%
12	24.71%	67.90%	13.70%	29.18%	31.18%	44.51%	124.14%	281.94%	269.10%

13	9.18%	75.57%	2.57%	4.30%	18.87%	54.55%	272.00%	262.50%	222.82%
14	8.68%	62.46%	3.43%	3.49%	17.04%	31.16%	135.71%	354.22%	231.90%
15	22.19%	64.01%	11.37%	29.60%	11.44%	92.15%	66.67%	290.65%	205.38%
16	39.77%	113.62%	28.11%	22.98%	17.26%	295.89%	-8.57%	272.19%	353.74%
17	-0.97%	59.63%	-2.50%	-9.05%	1.24%	50.97%	200.00%	268.93%	164.23%
18	14.59%	51.48%	11.29%	-3.12%	10.25%	101.83%	68.57%	179.09%	276.09%
19	7.00%	45.27%	-6.60%	6.30%	-8.86%	42.51%	57.75%	225.35%	117.94%
20	11.92%	66.14%	4.23%	11.63%	-21.26%	46.82%	86.00%	174.21%	181.46%
21	-6.07%	29.25%	-10.50%	-9.10%	-9.83%	20.03%	-32.17%	241.35%	55.73%
22	14.90%	32.05%	-3.36%	28.92%	7.59%	18.10%	25.00%	236.32%	120.09%
23	10.18%	82.73%	-2.68%	30.37%	-5.21%	74.79%	65.38%	296.40%	220.18%
24	5.12%	43.52%	-0.89%	2.97%	-20.58%	25.43%	92.59%	267.26%	173.47%
25	10.17%	31.49%	6.69%	-0.03%	29.15%	98.33%	50.00%	275.79%	240.70%
26	-0.96%	14.83%	-4.15%	-8.94%	-22.11%	69.91%	2.33%	194.31%	159.93%
27	-3.06%	33.62%	-4.74%	-11.82%	-14.08%	39.26%	-61.11%	200.00%	185.57%
28	21.85%	41.93%	24.51%	-4.93%	8.35%	48.11%	158.62%	403.08%	212.85%
29	-9.37%	-2.73%	-10.95%	-11.98%	-12.43%	28.39%	0.00%	173.33%	143.86%
30	-8.00%	6.12%	-9.13%	-10.73%	-22.29%	-15.05%	23.08%	284.13%	129.89%
31	3.07%	55.64%	-6.52%	12.27%	-16.90%	41.78%	77.78%	127.72%	182.27%
32	-7.03%	-0.82%	-4.40%	-11.85%	-15.89%	5.57%	475.00%	168.92%	175.45%
33	33.98%	47.12%	26.87%	31.84%	24.80%	78.25%	-18.85%	213.57%	230.17%
34	31.62%	51.88%	31.05%	-6.71%	-2.40%	60.43%	58.70%	396.30%	269.02%
35	7.12%	44.39%	-2.75%	8.94%	-15.54%	37.12%	20.45%	210.53%	172.43%
36	-8.60%	1.95%	-9.37%	-12.24%	34.22%	3.03%	-13.04%	190.63%	172.49%
37	41.46%	102.76%	36.35%	22.23%	7.40%	86.80%	33.71%	460.50%	276.17%
38	25.98%	83.76%	14.48%	27.01%	13.12%	67.47%	43.69%	320.51%	167.17%
39	-6.49%	28.23%	-1.80%	-15.21%	-6.15%	23.23%	84.62%	250.00%	161.33%
40	-9.31%	2.50%	-11.66%	-11.45%	-2.17%	16.98%	273.33%	345.61%	117.25%
41	23.25%	83.86%	20.99%	-2.46%	9.09%	60.81%	41.23%	297.76%	238.17%
42	2.38%	39.45%	14.45%	-15.50%	-4.27%	42.59%	15.15%	177.16%	116.70%
43	10.77%	36.30%	11.84%	-14.78%	-13.48%	25.80%	1.92%	208.55%	172.61%

44	25.83%	84.12%	12.66%	25.36%	21.73%	20.73%	3.45%	155.73%	161.59%
45	-0.16%	35.95%	8.02%	-16.35%	-1.08%	36.19%	147.22%	263.44%	165.12%
46	21.68%	12.82%	24.16%	-5.98%	42.66%	36.98%	120.83%	202.07%	212.21%

¹American Indian and Alaska Native Alone, Not Latino

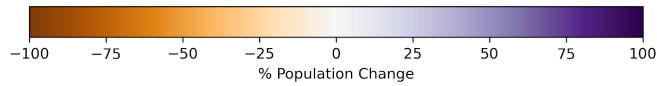
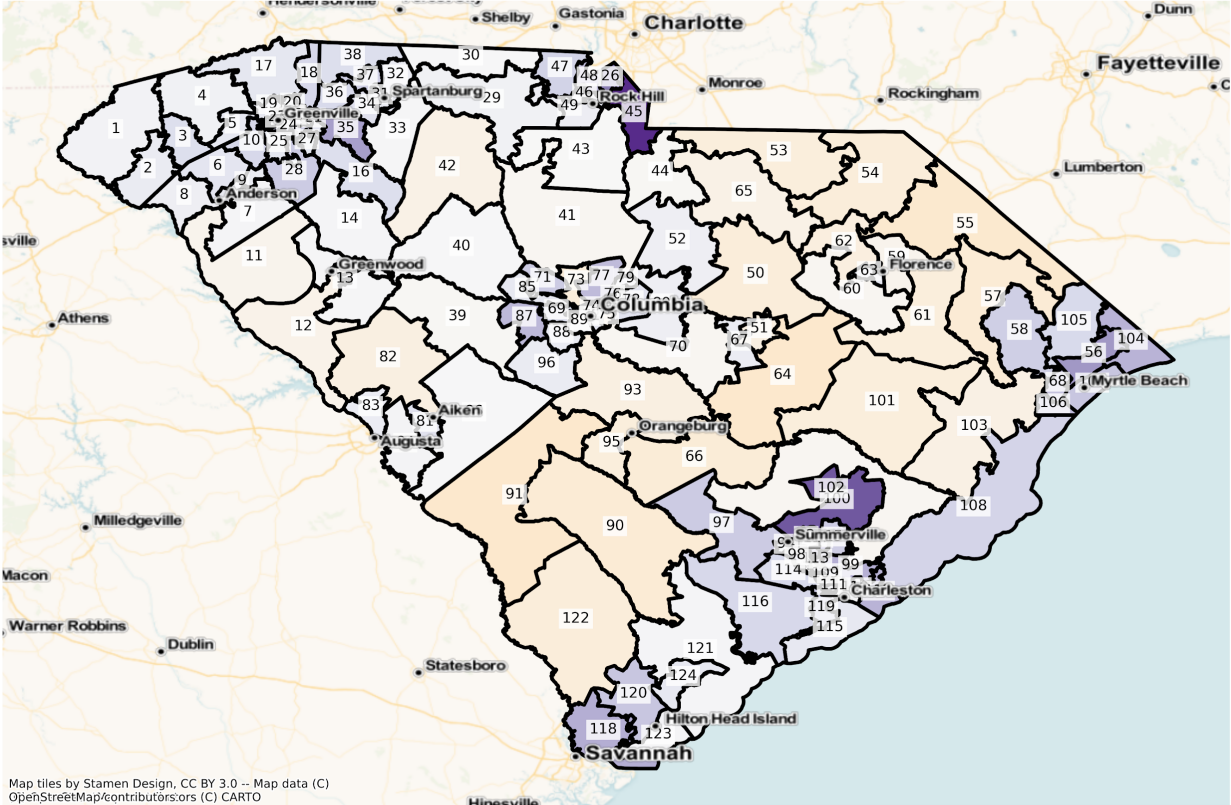
²Native Hawaiian and Pacific Islander Alone, Not Latino

State House

The charts below display the percent change in population from 2010 to 2020 for the listed group. Please note that the color bars are fixed to be from -100% to 100% and these maps are displayed in brown to purple. If the percent change in population was outside of this range, the color scheme changes to red to green to indicate a change.

Total Population

SC State House Districts
Population % Change from 2010 to 2020
Total Population



Total Population from 2010 to 2020 at State House District Level

DISTRICT	Total Population 2010	Total Population 2020	Total Population % Change
1	36,491	37,760	3.48%
2	37,786	40,848	8.10%
3	38,110	44,523	16.83%
4	38,179	39,761	4.14%
5	38,035	41,973	10.35%
6	38,039	42,643	12.10%
7	36,440	37,148	1.94%

8	36,875	38,931	5.58%
9	37,591	40,759	8.43%
10	38,145	46,061	20.75%
11	36,667	35,235	-3.91%
12	36,603	34,896	-4.66%
13	38,116	38,589	1.24%
14	37,937	38,778	2.22%
15	36,693	46,108	25.66%
16	38,162	44,647	16.99%
17	38,206	42,648	11.63%
18	38,189	45,995	20.44%
19	37,944	41,869	10.34%
20	38,123	41,056	7.69%
21	38,150	43,450	13.89%
22	38,226	42,079	10.08%
23	36,374	40,278	10.73%
24	37,893	47,215	24.60%
25	36,722	40,802	11.11%
26	36,914	57,221	55.01%
27	38,199	42,566	11.43%
28	37,306	47,119	26.30%
29	37,280	38,863	4.25%
30	37,119	37,293	0.47%
31	37,353	40,409	8.18%
32	36,914	39,846	7.94%
33	38,041	38,575	1.40%
34	37,651	42,947	14.07%
35	38,248	55,163	44.22%
36	37,471	44,971	20.02%
37	36,376	44,998	23.70%
38	38,208	44,571	16.65%

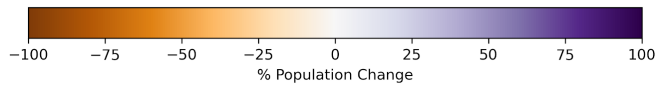
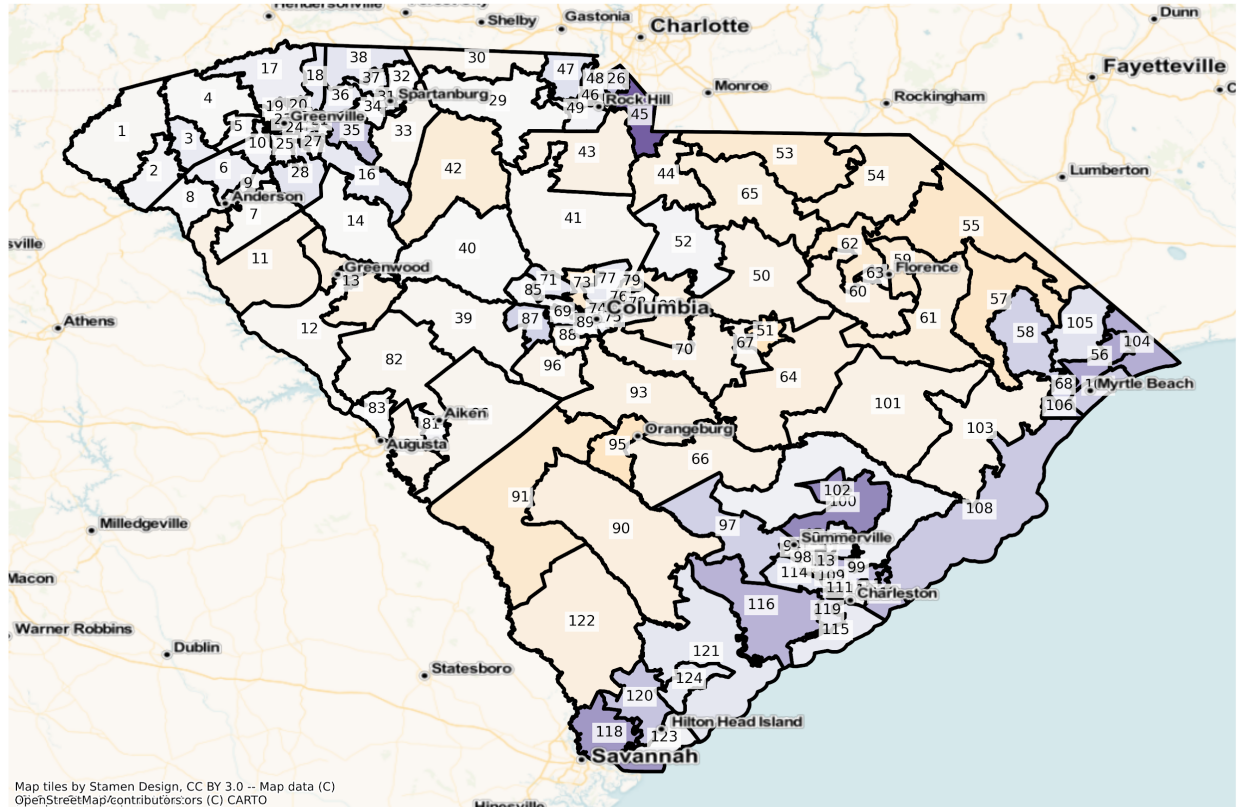
39	38,225	37,789	-1.14%
40	37,508	37,719	0.56%
41	37,106	36,356	-2.02%
42	38,194	36,117	-5.44%
43	36,924	36,769	-0.42%
44	38,053	37,555	-1.31%
45	37,106	66,141	78.25%
46	37,532	40,799	8.70%
47	37,149	45,838	23.39%
48	37,326	49,275	32.01%
49	36,981	39,411	6.57%
50	36,558	33,156	-9.31%
51	36,806	34,279	-6.87%
52	38,247	40,415	5.67%
53	36,421	33,411	-8.26%
54	36,660	33,464	-8.72%
55	36,665	32,254	-12.03%
56	38,019	55,781	46.72%
57	36,637	32,669	-10.83%
58	36,435	45,326	24.40%
59	36,406	35,248	-3.18%
60	36,382	35,568	-2.24%
61	36,404	33,397	-8.26%
62	38,222	35,252	-7.77%
63	36,376	40,332	10.88%
64	37,003	32,279	-12.77%
65	36,519	34,695	-4.99%
66	36,848	33,320	-9.57%
67	37,362	40,124	7.39%
68	37,815	49,304	30.38%
69	37,568	43,919	16.91%

70	36,506	35,779	-1.99%
71	36,472	45,877	25.79%
72	37,892	42,434	11.99%
73	38,232	34,686	-9.27%
74	36,776	36,040	-2.00%
75	37,179	34,295	-7.76%
76	38,180	39,399	3.19%
77	38,188	50,725	32.83%
78	37,517	42,381	12.96%
79	38,199	41,922	9.75%
80	36,713	38,758	5.57%
81	38,027	43,658	14.81%
82	37,254	34,658	-6.97%
83	38,176	40,936	7.23%
84	38,210	39,378	3.06%
85	38,145	42,151	10.50%
86	38,206	38,388	0.48%
87	38,176	51,197	34.11%
88	38,058	41,052	7.87%
89	38,033	39,421	3.65%
90	36,348	32,550	-10.45%
91	37,287	32,543	-12.72%
92	36,655	38,062	3.84%
93	37,470	35,061	-6.43%
94	36,402	40,592	11.51%
95	37,021	34,092	-7.91%
96	38,199	41,406	8.40%
97	36,722	46,324	26.15%
98	36,606	46,416	26.80%
99	37,061	51,031	37.69%
100	36,422	60,683	66.61%

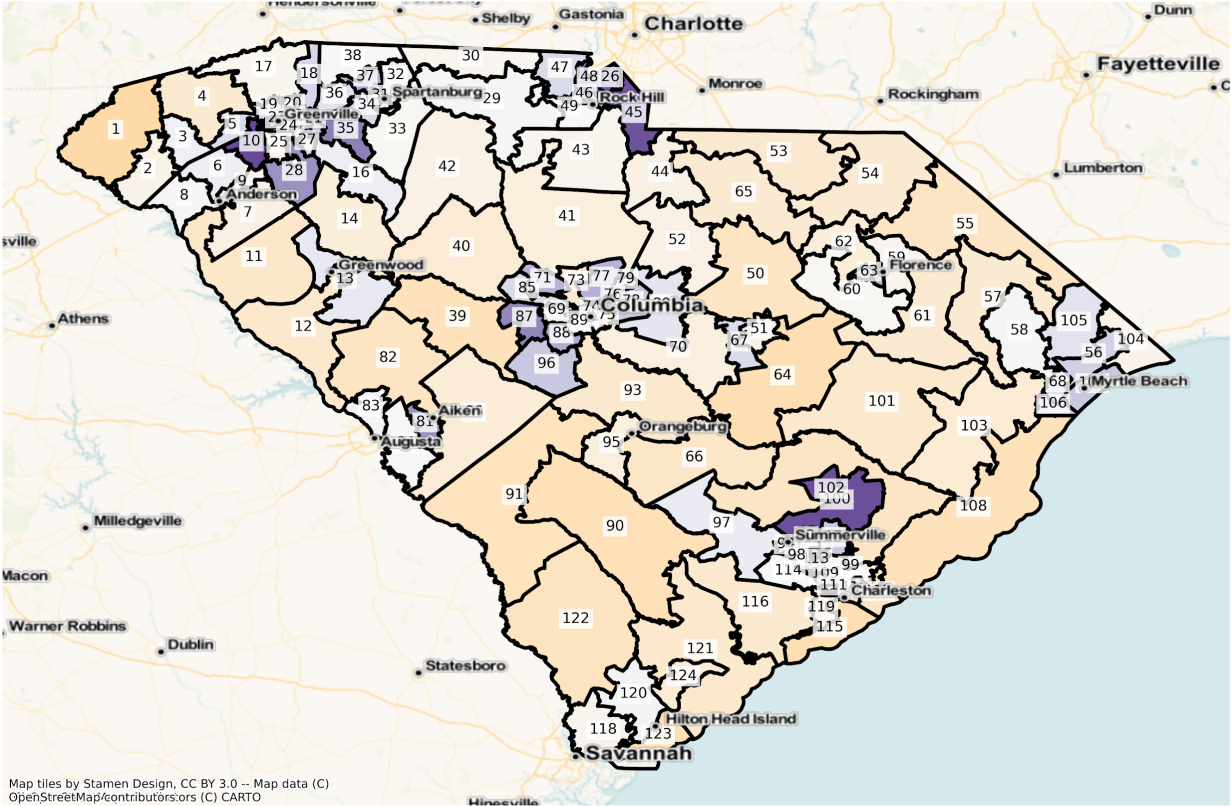
101	36,426	33,326	-8.51%
102	37,666	36,863	-2.13%
103	36,535	34,435	-5.75%
104	36,888	50,270	36.28%
105	37,637	45,003	19.57%
106	36,572	49,026	34.05%
107	37,203	47,930	28.83%
108	36,438	44,677	22.61%
109	37,806	38,114	0.81%
110	37,422	38,277	2.28%
111	36,653	36,100	-1.51%
112	36,943	50,251	36.02%
113	37,013	43,129	16.52%
114	36,571	43,797	19.76%
115	37,284	41,168	10.42%
116	36,473	43,934	20.46%
117	36,767	47,715	29.78%
118	37,232	51,734	38.95%
119	37,330	47,854	28.19%
120	36,550	46,957	28.47%
121	36,511	37,295	2.15%
122	36,615	33,350	-8.92%
123	37,114	37,748	1.71%
124	37,150	41,021	10.42%

Population by Race and Ethnicity

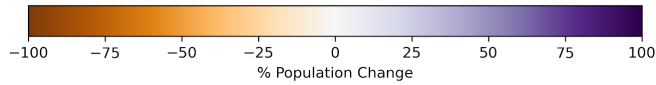
SC State House Districts
Population % Change from 2010 to 2020
Ethnicity: Not Latino White alone



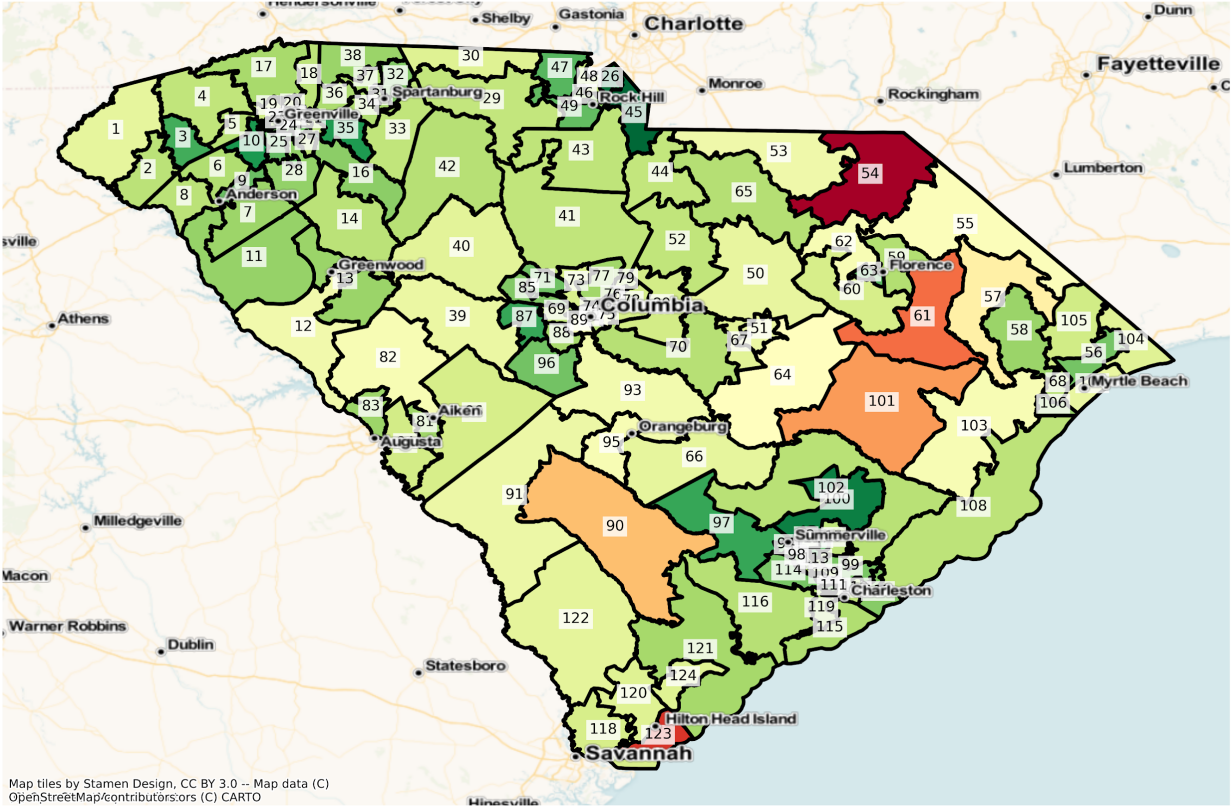
SC State House Districts
 Population % Change from 2010 to 2020
 Ethnicity: Not Latino African American alone



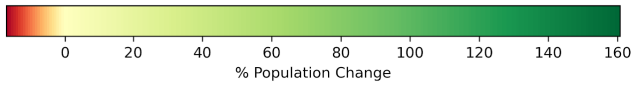
Map tiles by Stamen Design, CC BY 3.0 -- Map data (C) OpenStreetMap/contributors; ors (C) CARTO



SC State House Districts
 Population % Change from 2010 to 2020
 Ethnicity: Hispanic or Latino

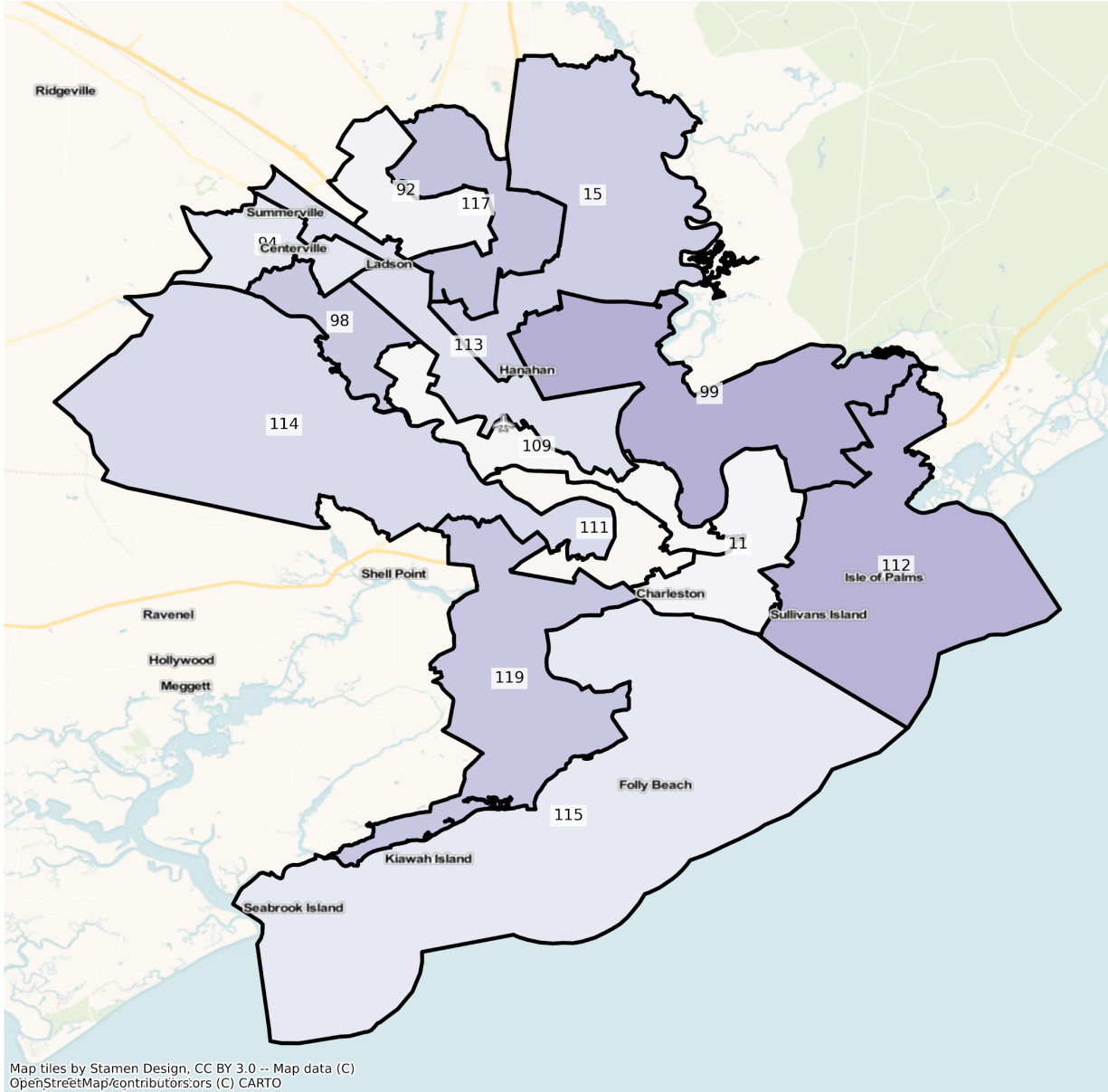


Map tiles by Stamen Design, CC BY 3.0 -- Map data (C) OpenStreetMap/contributors,ors (C) CARTO

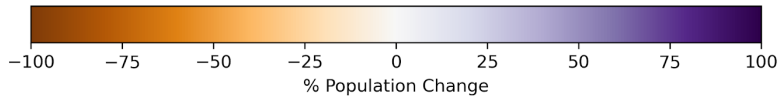


Charleston

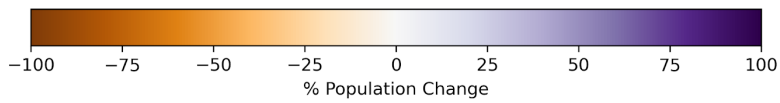
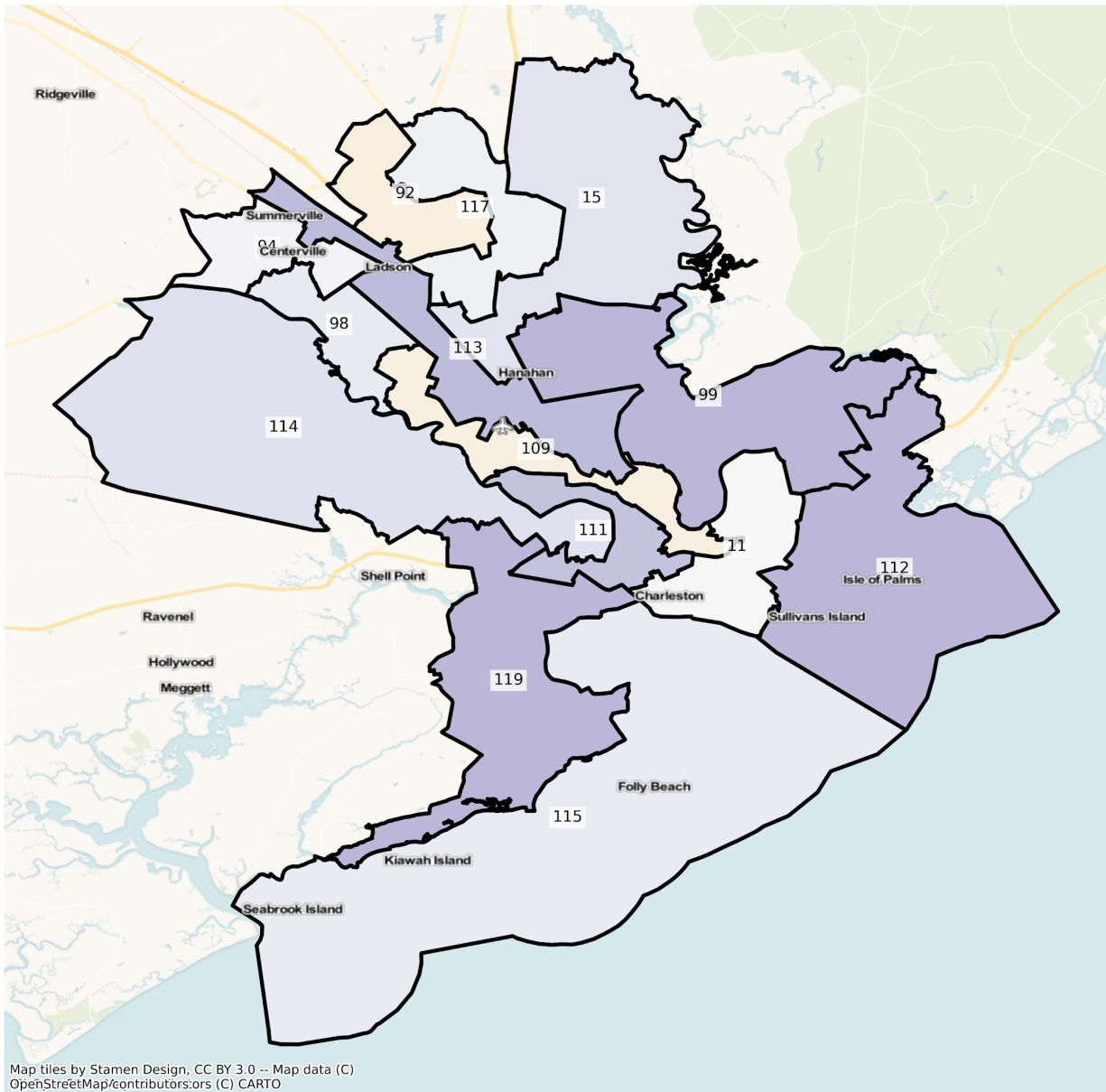
SC Charleston State House Districts
Population % Change from 2010 to 2020
Total Population



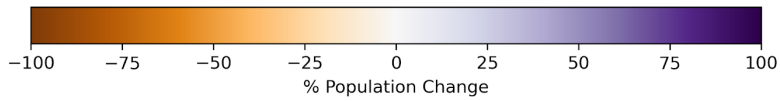
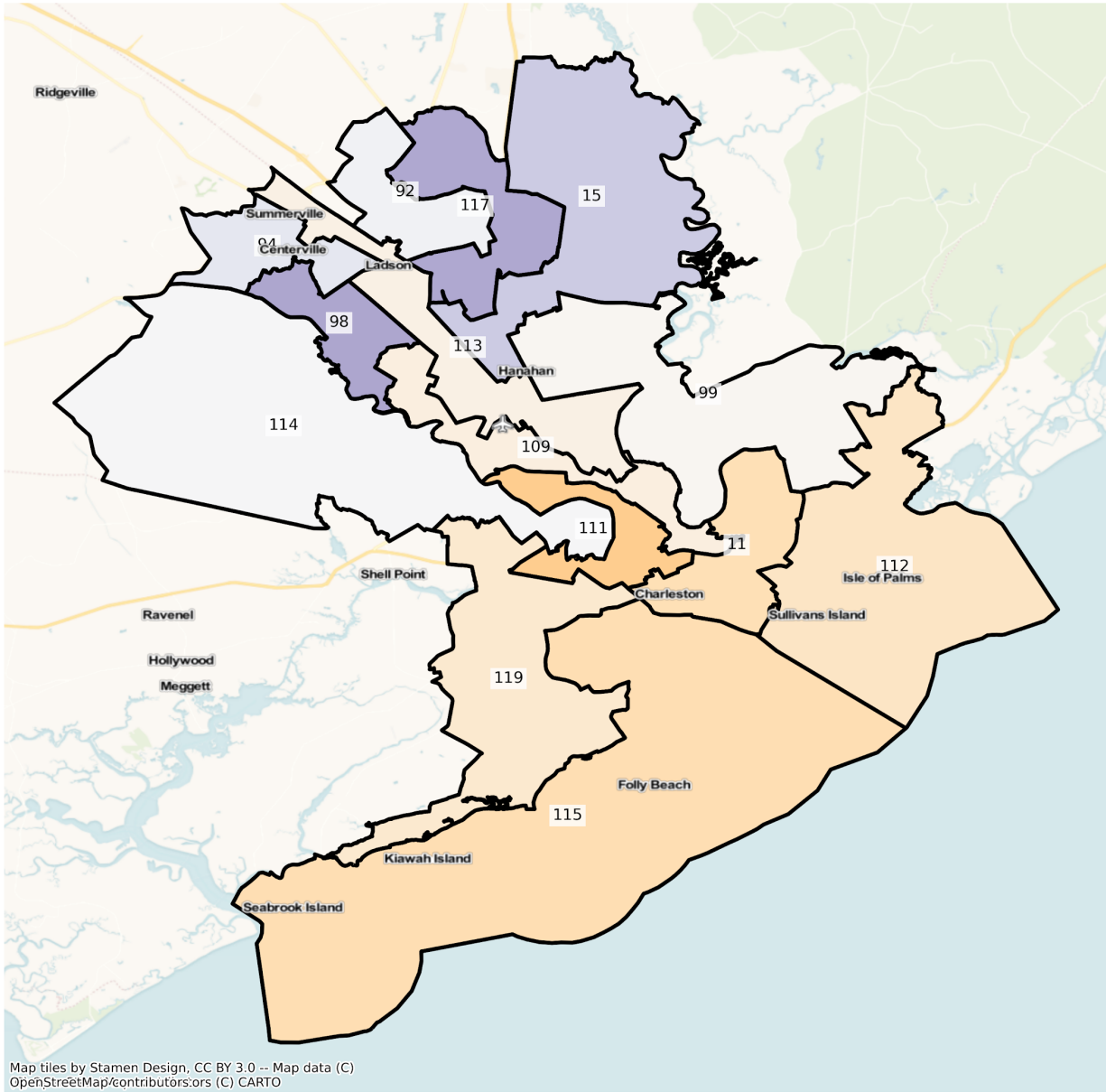
Map tiles by Stamen Design, CC BY 3.0 -- Map data (C)
OpenStreetMap/contributors,ors (C) CARTO



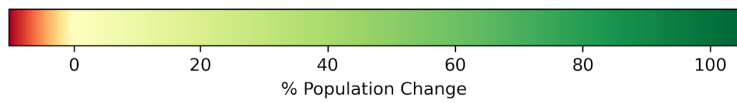
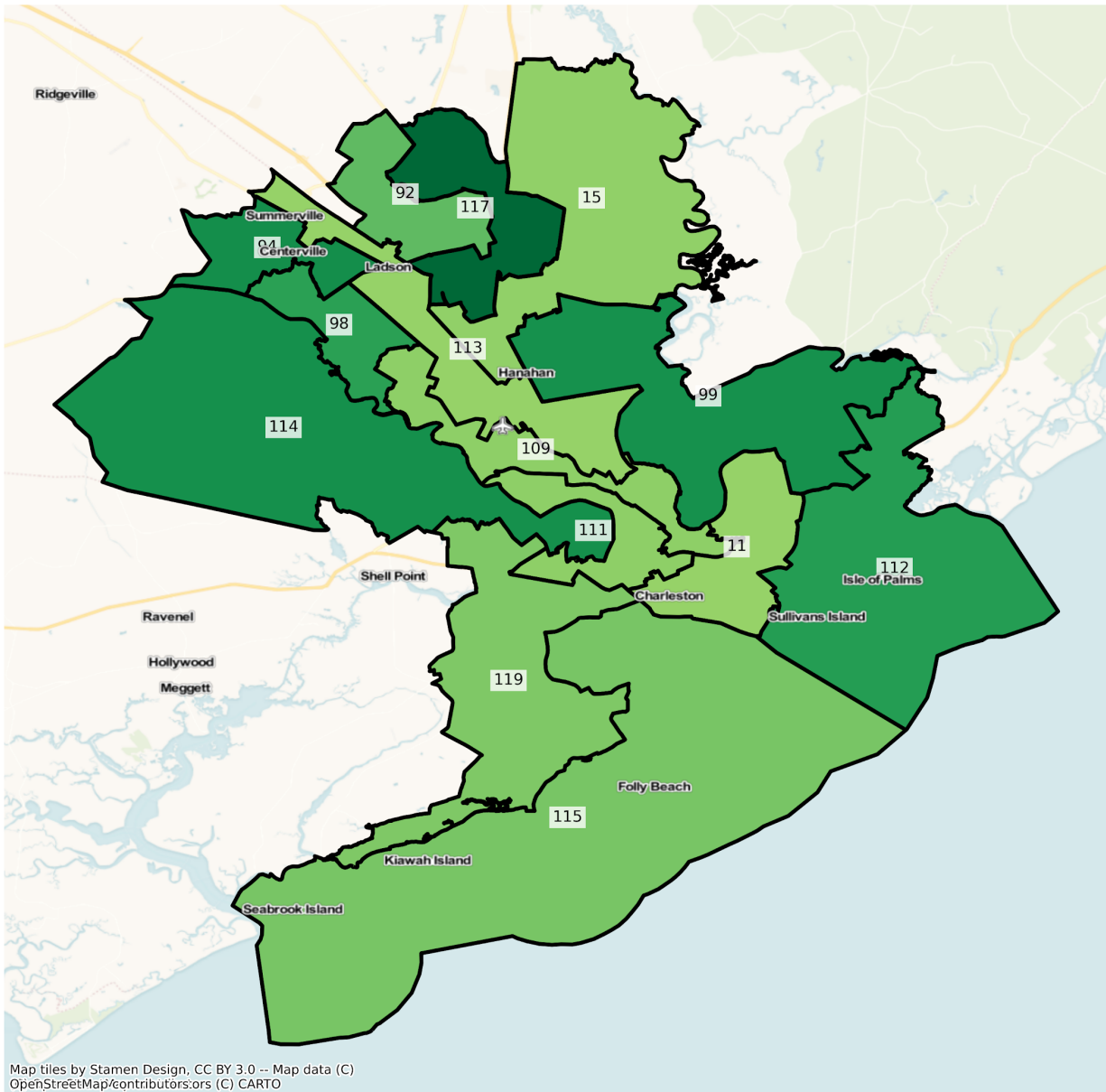
SC Charleston State House Districts
 Population % Change from 2010 to 2020
 Ethnicity: Not Latino White alone



SC Charleston State House Districts
 Population % Change from 2010 to 2020
 Ethnicity: Not Latino African American alone

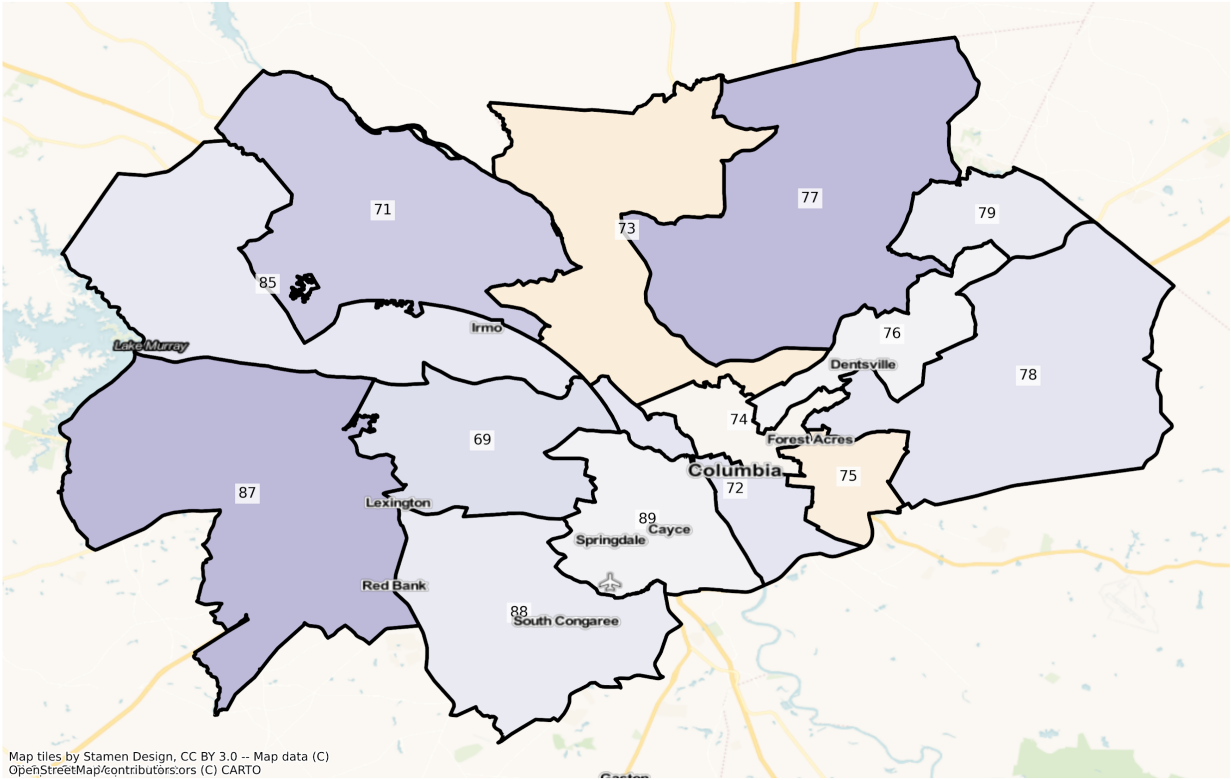


SC Charleston State House Districts
 Population % Change from 2010 to 2020
 Ethnicity: Hispanic or Latino

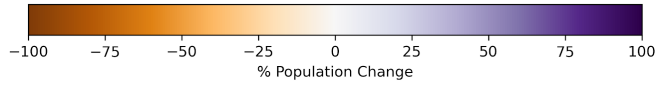


Columbia

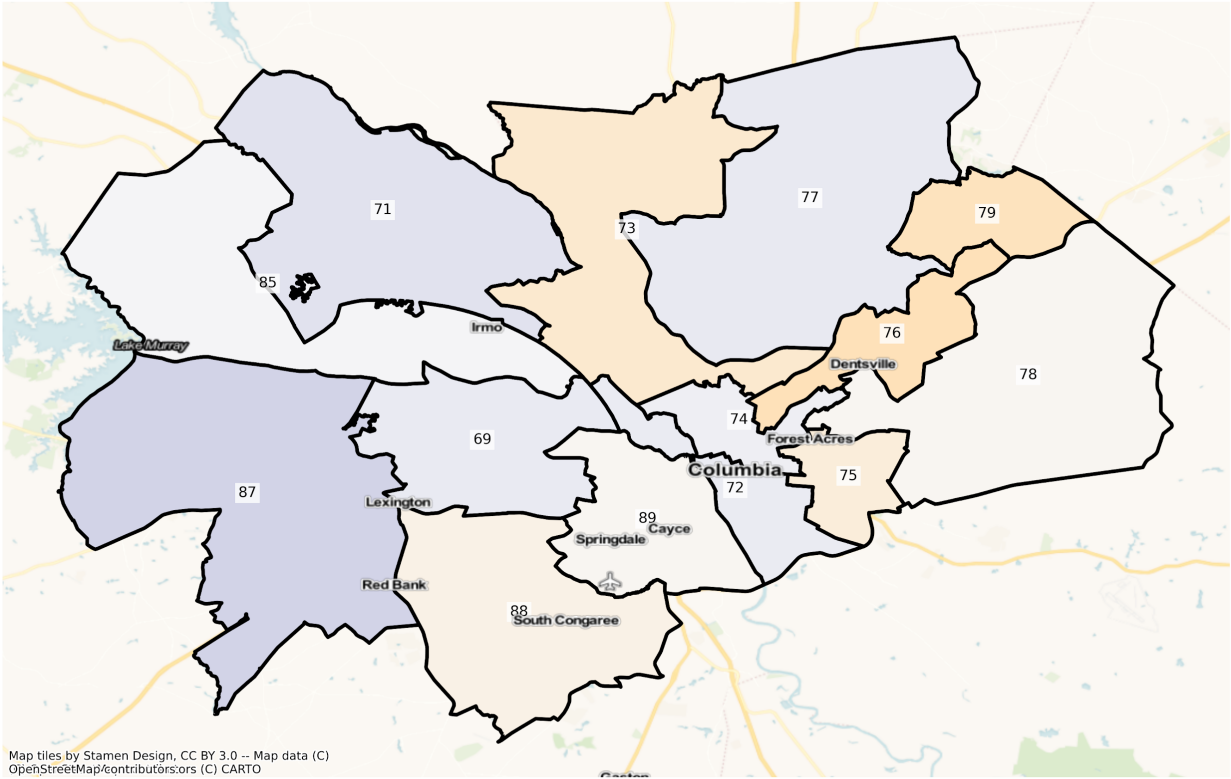
SC Columbia State House Districts
Population % Change from 2010 to 2020
Total Population



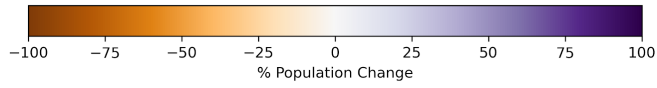
Map tiles by Stamen Design, CC BY 3.0 -- Map data (C)
OpenStreetMap/contributors/srs (C) CARTO



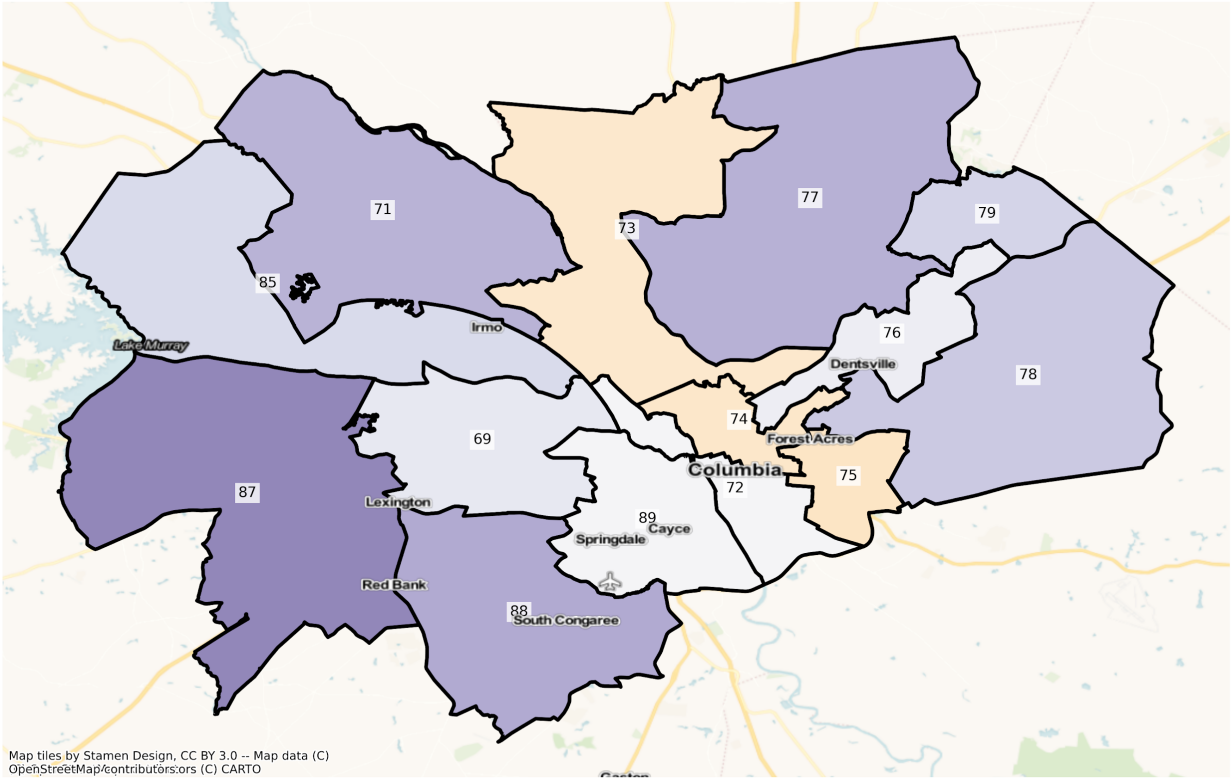
SC Columbia State House Districts
Population % Change from 2010 to 2020
Ethnicity: Not Latino White alone



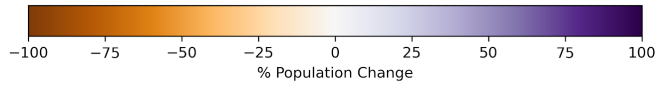
Map tiles by Stamen Design, CC BY 3.0 -- Map data (C)
OpenStreetMap/contributors:ors (C) CARTO



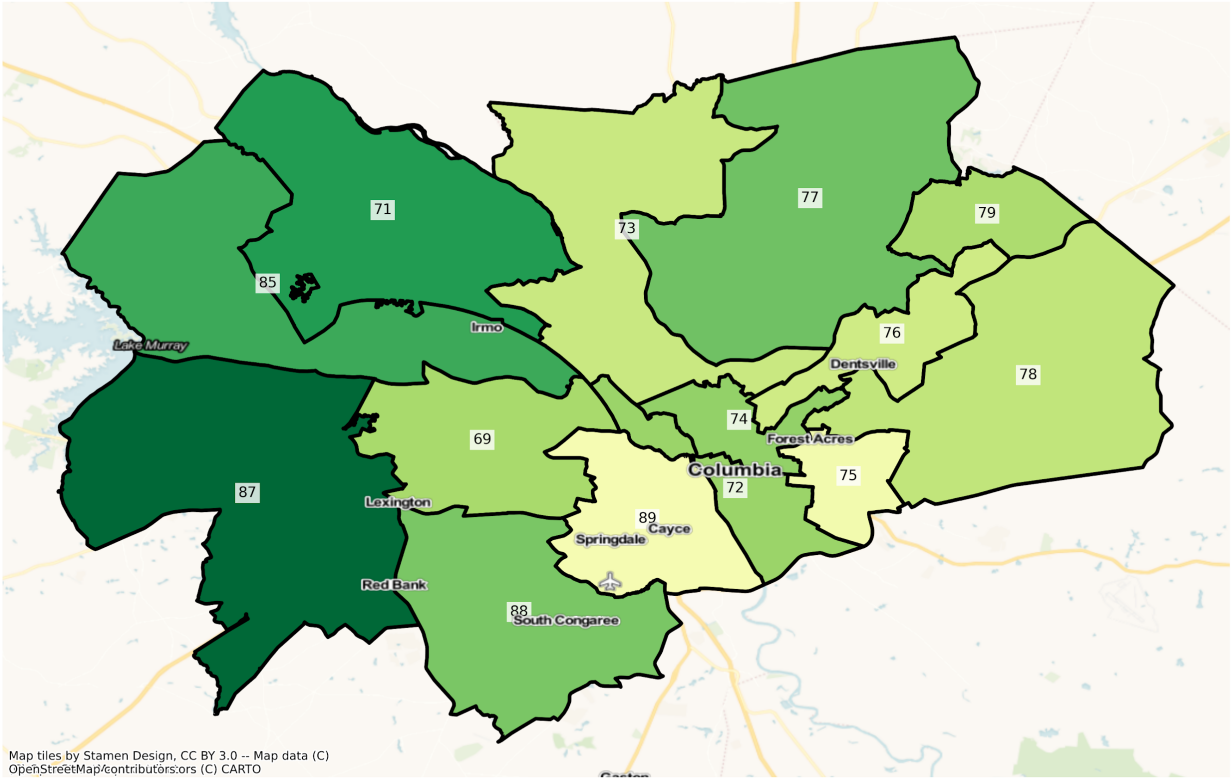
SC Columbia State House Districts
Population % Change from 2010 to 2020
Ethnicity: Not Latino African American alone



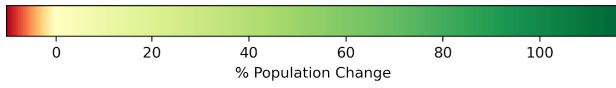
Map tiles by Stamen Design, CC BY 3.0 -- Map data (C)
OpenStreetMap/contributors;ors (C) CARTO



SC Columbia State House Districts
Population % Change from 2010 to 2020
Ethnicity: Hispanic or Latino

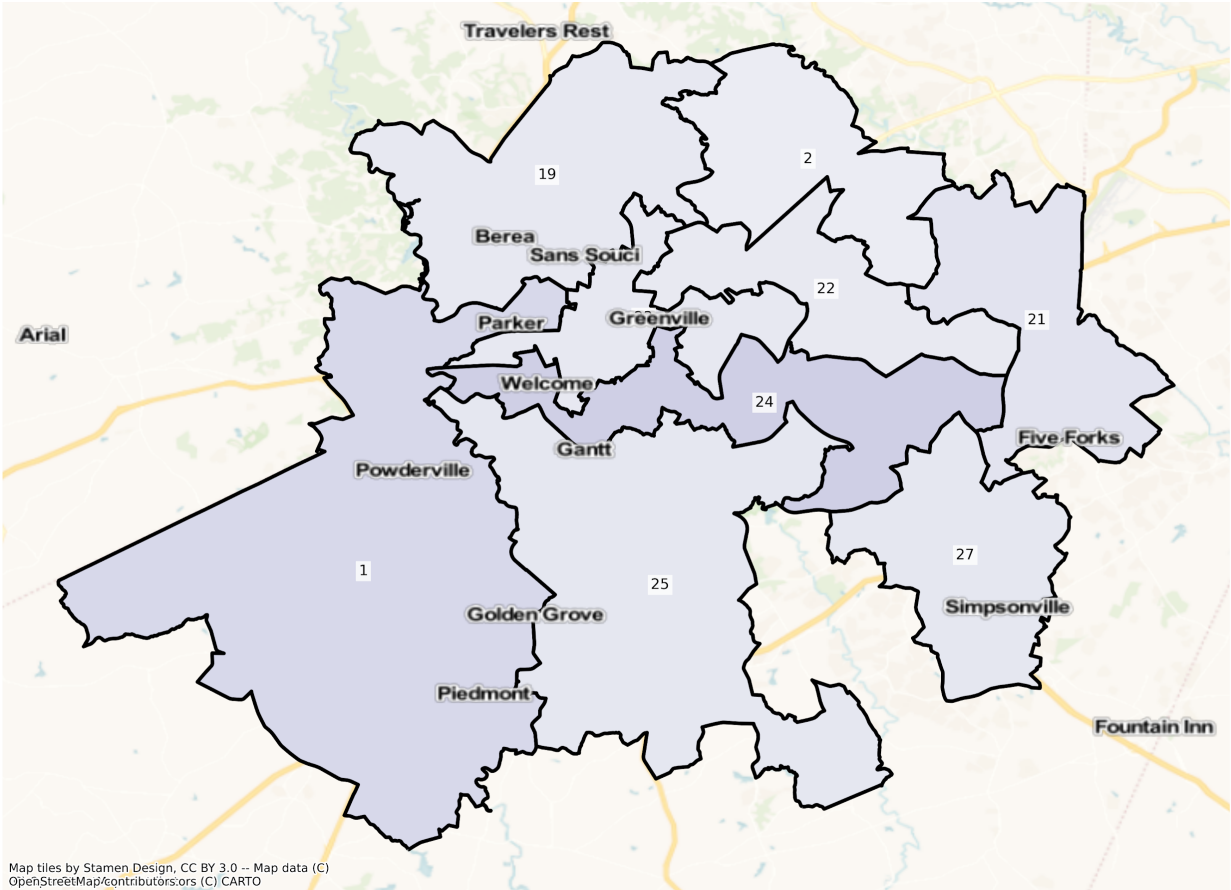


Map tiles by Stamen Design, CC BY 3.0 -- Map data (C)
OpenStreetMap/contributors:ors (C) CARTO

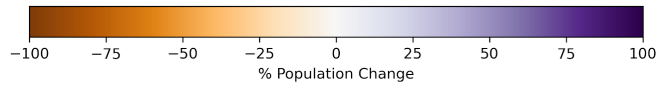


Greenville

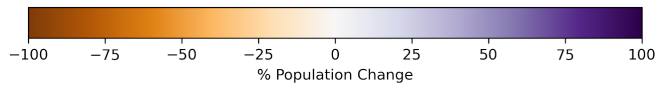
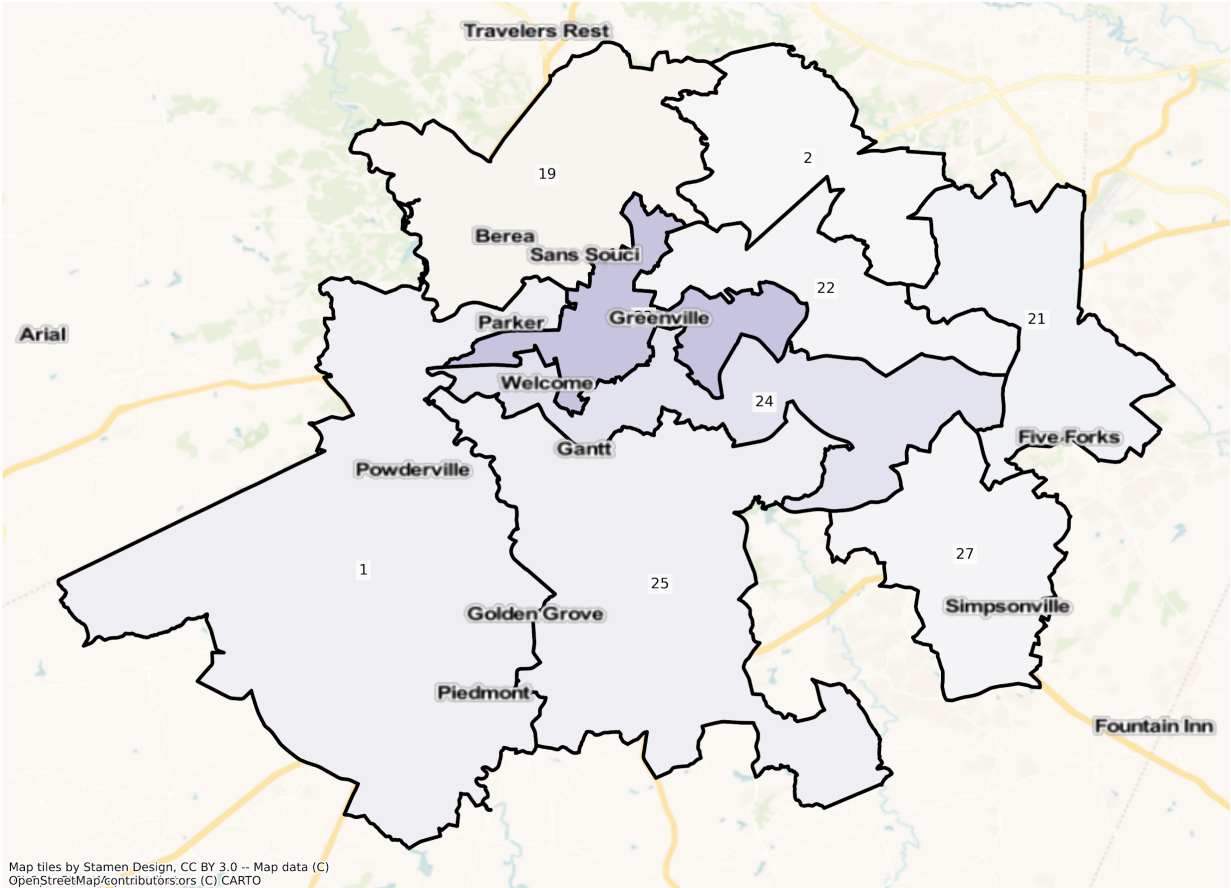
SC Greenville State House Districts
Population % Change from 2010 to 2020
Total Population



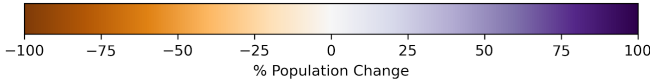
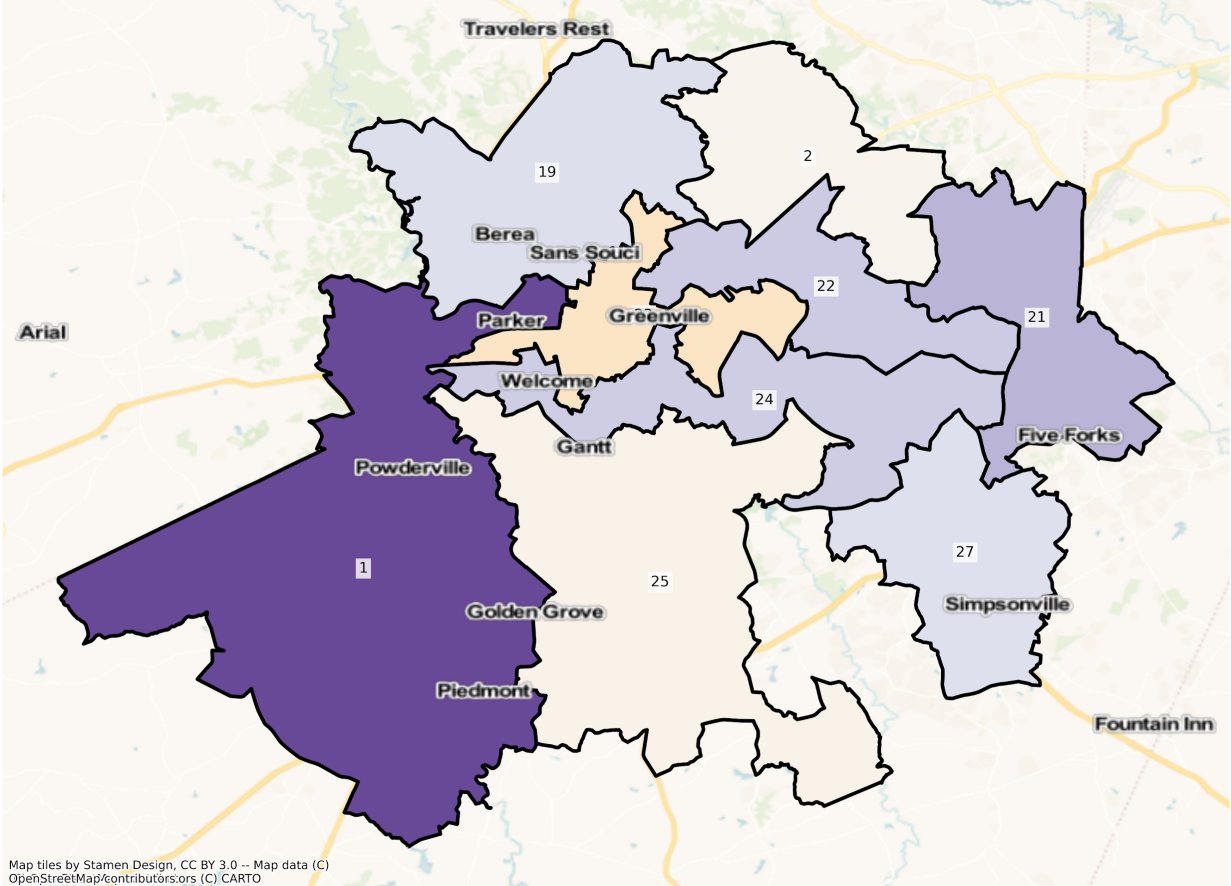
Map tiles by Stamen Design, CC BY 3.0 -- Map data (C) OpenStreetMap/contributors,ors (C) CARTO



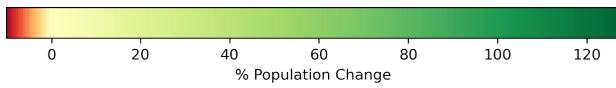
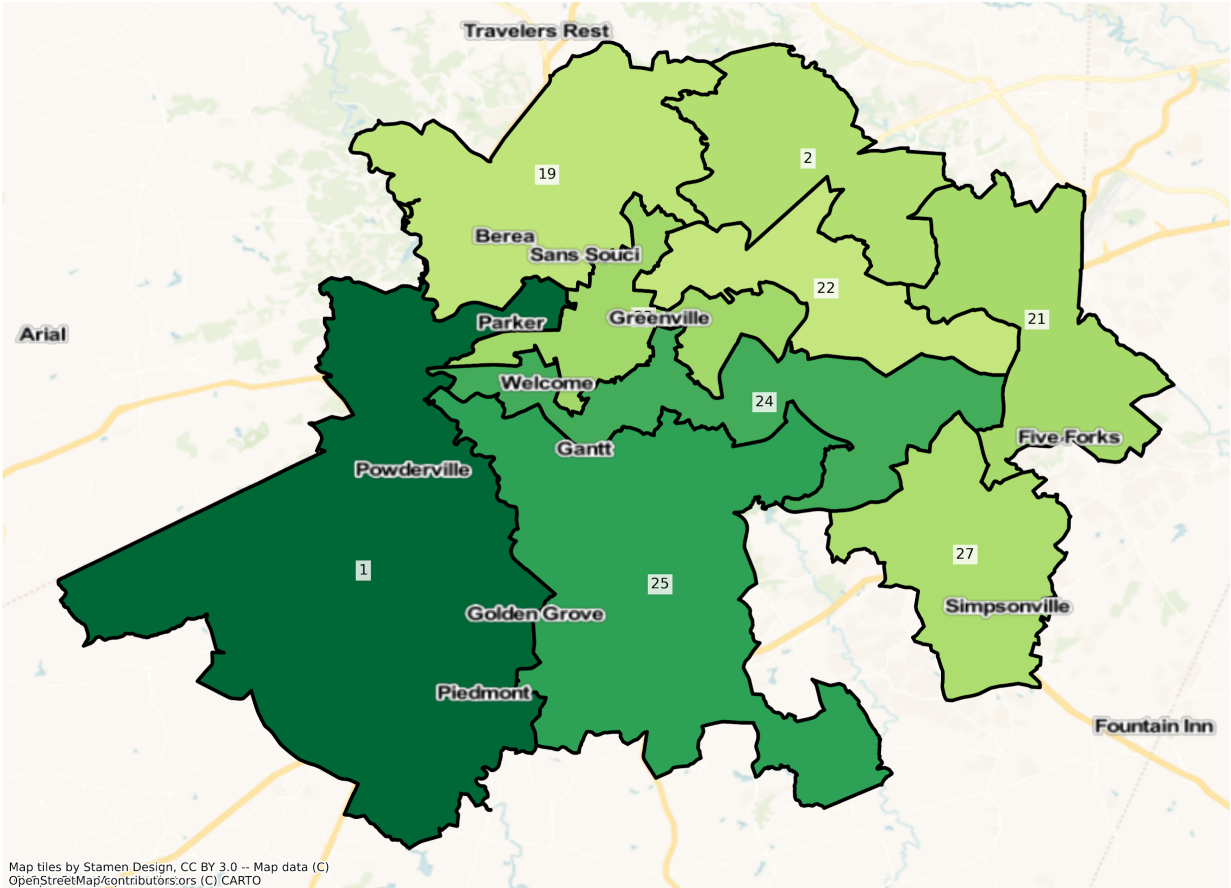
SC Greenville State House Districts
Population % Change from 2010 to 2020
Ethnicity: Not Latino White alone



SC Greenville State House Districts
Population % Change from 2010 to 2020
Ethnicity: Not Latino African American alone

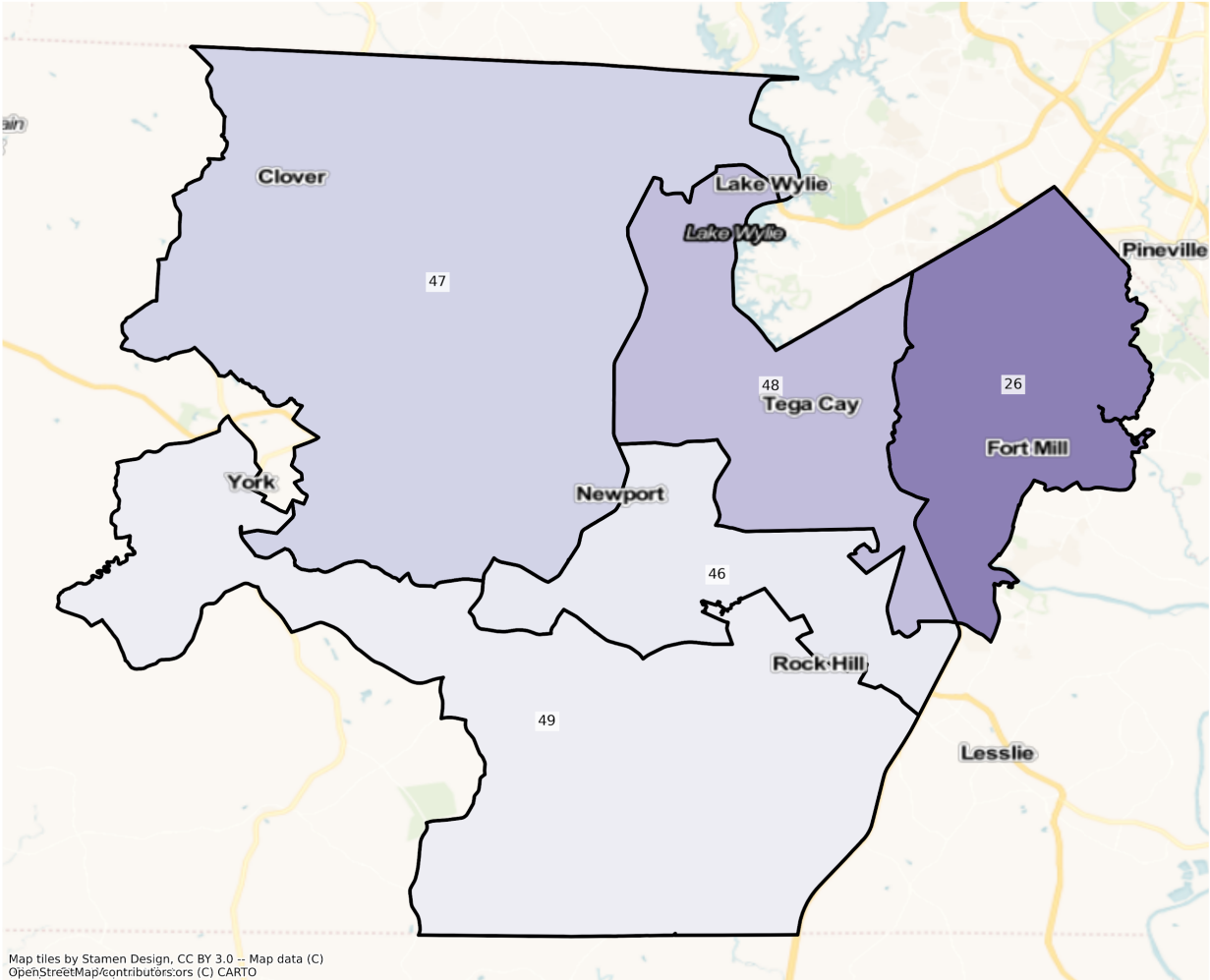


SC Greenville State House Districts
Population % Change from 2010 to 2020
Ethnicity: Hispanic or Latino

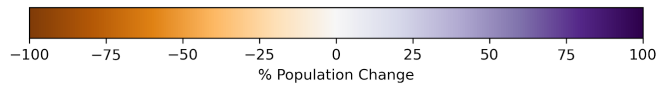


Rock Hill

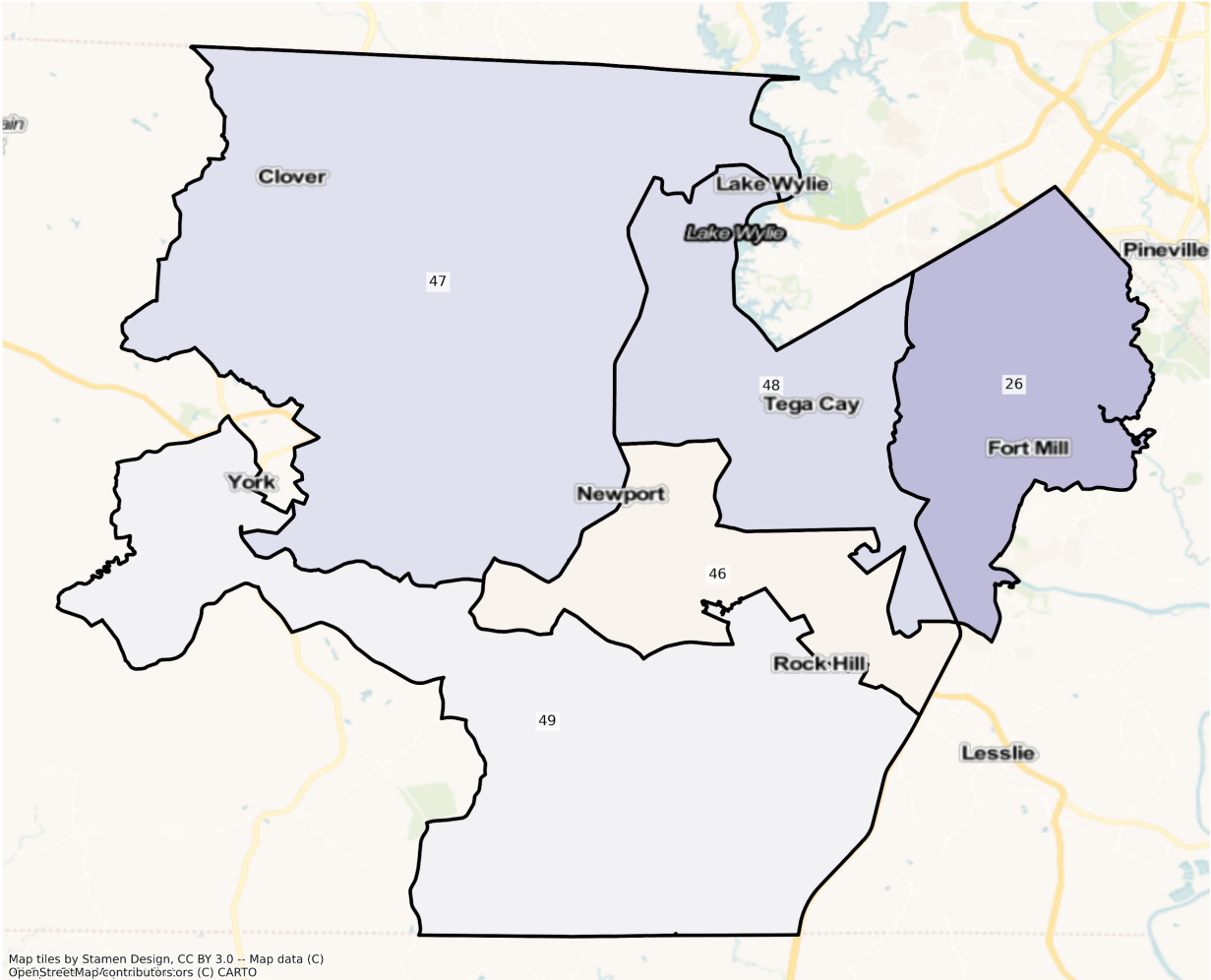
SC Rock Hill State House Districts
Population % Change from 2010 to 2020
Total Population



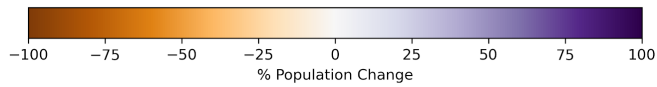
Map tiles by Stamen Design, CC BY 3.0 -- Map data (C) OpenStreetMap/contributors/ors (C) CARTO



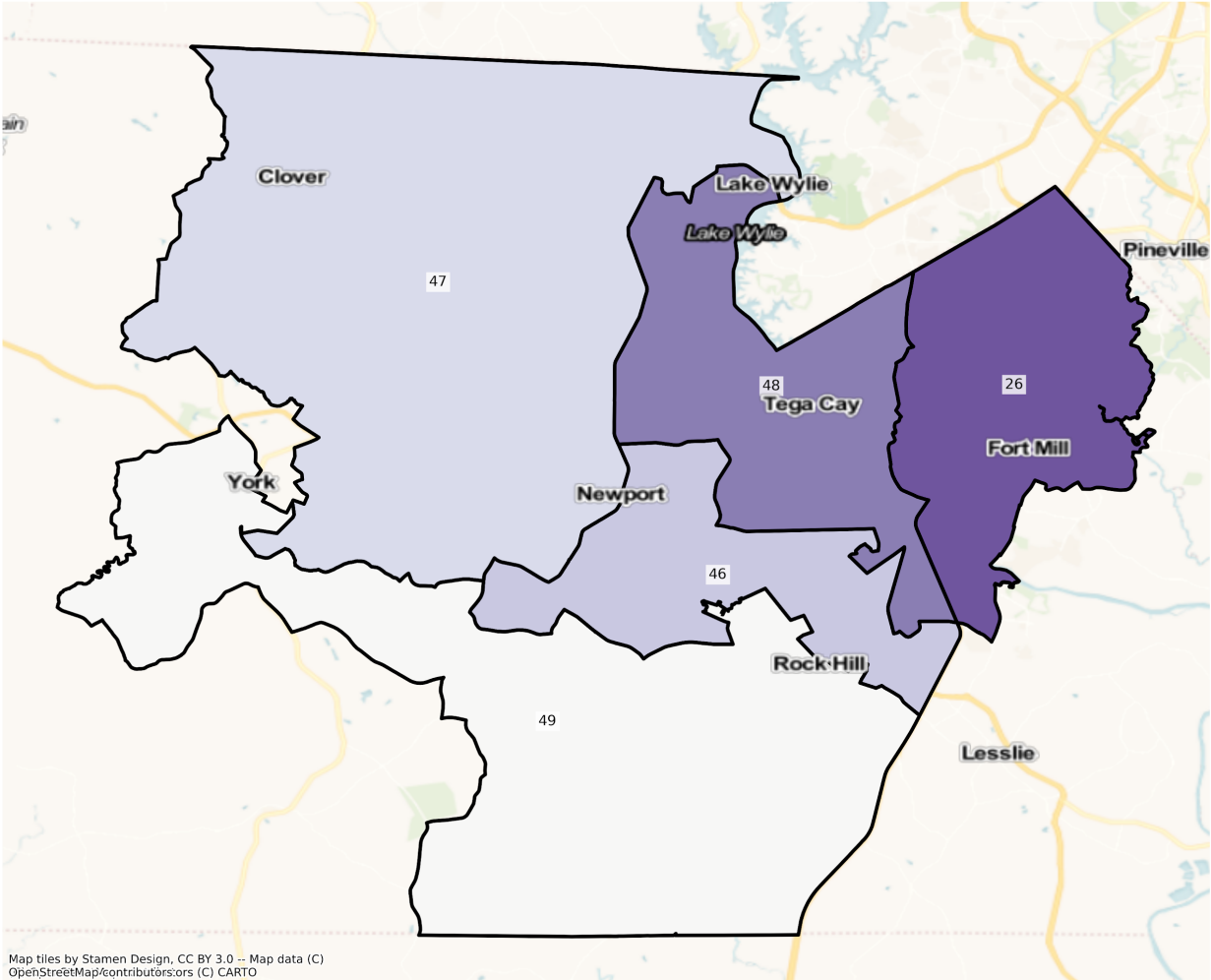
SC Rock Hill State House Districts
Population % Change from 2010 to 2020
Ethnicity: Not Latino White alone



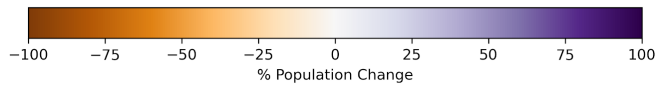
Map tiles by Stamen Design, CC BY 3.0 -- Map data (C)
OpenStreetMap/contributors;ors (C) CARTO



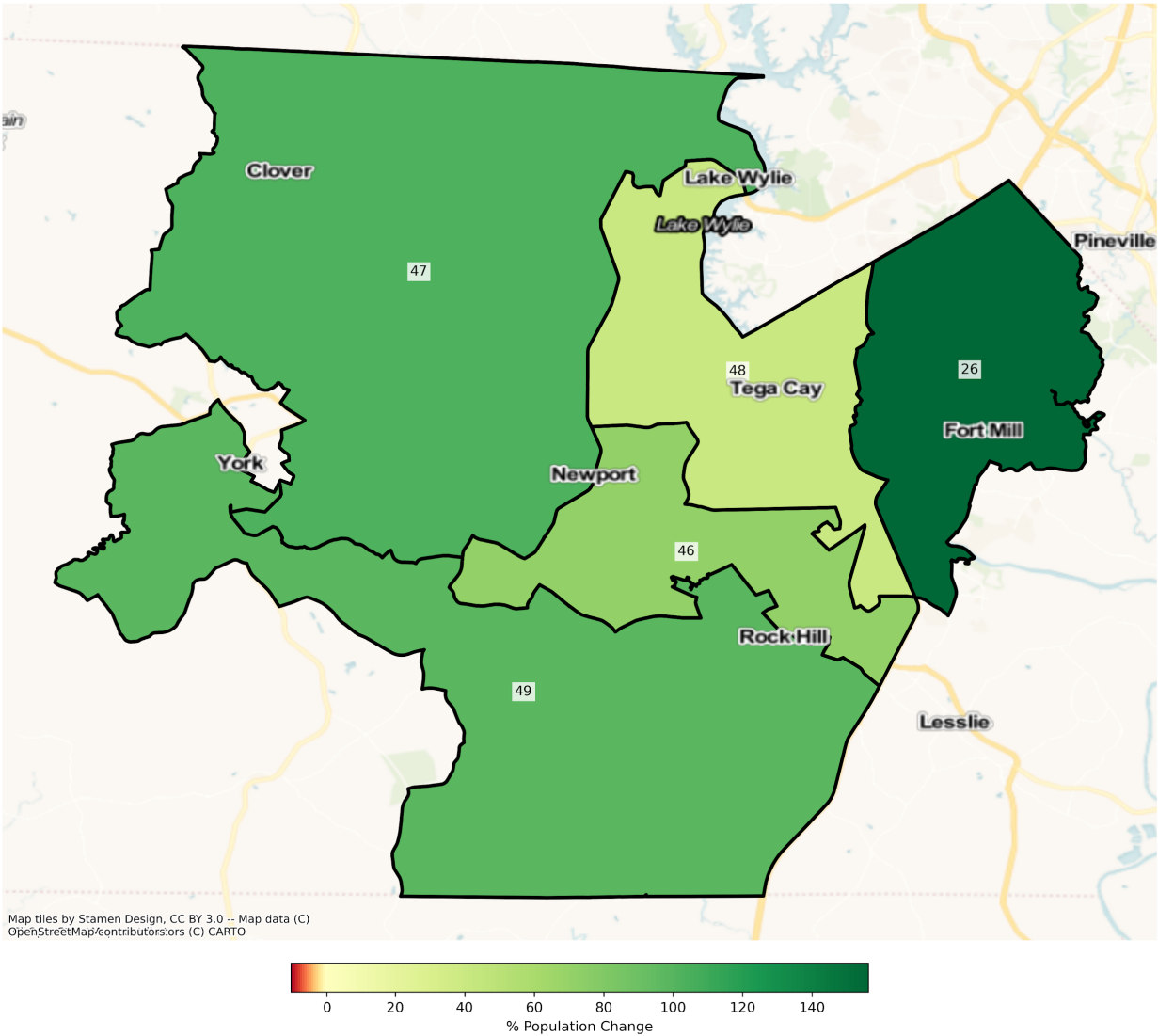
SC Rock Hill State House Districts
Population % Change from 2010 to 2020
Ethnicity: Not Latino African American alone



Map tiles by Stamen Design, CC BY 3.0 -- Map data (C)
OpenStreetMap/contributors/ors (C) CARTO



SC Rock Hill State House Districts
 Population % Change from 2010 to 2020
 Ethnicity: Hispanic or Latino



2010 Population by Race and Ethnicity at State House District Level

DISTRICT	Total Population	Hispanic or Latino Origin	White Alone, not Latino	African American Alone, not Latino	AIAN Alone, not Latino ¹	Asian Alone, not Latino	NHPI Alone, not Latino ²	Other Alone, not Latino	Two or More, not Latino
1	36,491	2,161	32,733	1,044	71	109	5	11	357
2	37,786	1,188	31,078	4,506	81	312	3	30	588
3	38,110	992	31,786	3,178	61	1,557	4	49	483

4	38,179	862	35,328	1,354	66	98	5	26	440
5	38,035	1,720	32,376	3,085	71	239	5	38	501
6	38,039	1,309	29,580	5,928	89	477	10	40	606
7	36,440	606	28,844	6,306	90	84	0	20	490
8	36,875	1,031	28,289	6,717	75	250	9	38	466
9	37,591	1,323	27,759	7,603	81	314	2	37	472
10	38,145	1,899	33,364	2,028	97	265	10	43	439
11	36,667	667	26,208	9,091	85	99	6	39	472
12	36,603	2,944	13,676	19,396	68	129	8	62	320
13	38,116	854	29,675	6,682	69	449	4	32	351
14	37,937	1,312	27,869	8,200	72	84	8	26	366
15	36,693	5,998	18,204	9,549	156	1,511	40	227	1,008
16	38,162	2,008	24,945	10,382	99	175	19	38	496
17	38,206	1,219	34,105	2,023	104	194	10	86	465
18	38,189	2,853	30,797	3,485	63	453	10	43	485
19	37,944	6,683	25,228	4,823	102	471	6	63	568
20	38,123	3,213	28,999	4,186	75	1,061	33	49	507
21	38,150	1,926	31,197	2,044	68	2,366	6	60	483
22	38,226	2,513	30,410	3,240	71	1,413	35	79	465
23	36,374	4,258	12,344	18,719	71	254	26	52	650
24	37,893	2,487	29,102	4,988	77	701	14	54	470
25	36,722	3,075	11,995	20,773	71	147	5	38	618
26	36,914	1,924	29,281	3,840	136	1,068	15	56	594
27	38,199	2,786	27,394	6,336	59	857	42	85	640
28	37,306	2,396	28,714	5,222	66	337	21	64	486
29	37,280	1,164	29,213	6,043	166	230	5	19	440
30	37,119	1,579	27,252	7,532	87	179	5	38	447
31	37,353	2,974	12,194	20,823	78	716	7	55	506
32	36,914	1,320	28,701	5,685	51	650	14	29	464
33	38,041	1,084	30,678	5,192	88	579	3	25	392
34	37,651	2,643	23,996	9,015	70	1,371	7	39	510

35	38,248	1,773	30,930	4,091	60	793	14	60	527
36	37,471	3,848	25,656	6,815	73	453	8	54	564
37	36,376	3,091	26,550	5,049	84	1,053	6	59	484
38	38,208	1,283	32,889	2,971	80	467	13	22	483
39	38,225	3,775	26,563	7,279	110	104	21	35	338
40	37,508	2,690	22,690	11,533	99	116	10	36	334
41	37,106	679	14,520	21,037	90	235	4	49	492
42	38,194	527	26,379	10,643	80	111	14	29	411
43	36,924	783	26,897	8,182	252	210	3	44	553
44	38,053	1,611	23,457	12,377	90	84	8	59	367
45	37,106	1,871	29,055	4,351	794	437	7	45	546
46	37,532	1,877	27,790	6,374	178	673	15	54	571
47	37,149	1,205	30,977	3,906	139	359	7	31	525
48	37,326	2,744	28,359	4,621	173	786	21	48	574
49	36,981	960	15,318	19,675	170	226	9	39	584
50	36,558	749	14,412	20,660	130	188	13	24	382
51	36,806	1,175	11,149	23,580	95	299	36	37	435
52	38,247	1,323	25,488	10,728	84	169	11	34	410
53	36,421	1,277	22,678	11,612	182	135	9	38	490
54	36,660	1,042	16,927	17,088	952	98	3	22	528
55	36,665	921	17,579	16,403	1,095	78	8	40	541
56	38,019	2,115	28,891	5,407	127	633	23	77	746
57	36,637	923	15,393	19,562	168	184	3	18	386
58	36,435	1,806	25,599	8,152	166	154	7	35	516
59	36,406	602	12,314	22,761	122	175	9	19	404
60	36,382	940	23,607	11,119	127	250	3	36	300
61	36,404	778	18,645	16,359	130	113	4	29	346
62	38,222	690	15,203	21,813	85	81	0	13	337
63	36,376	759	26,317	7,670	77	1,126	7	50	370
64	37,003	970	15,763	19,737	71	214	6	10	232
65	36,519	767	27,752	7,236	115	160	6	48	435

66	36,848	708	11,558	23,820	247	138	3	22	352
67	37,362	1,495	24,963	9,450	111	562	27	55	699
68	37,815	3,441	29,982	2,764	152	595	38	53	790
69	37,568	1,706	28,588	5,369	96	1,155	38	62	554
70	36,506	1,107	11,731	22,558	102	365	31	36	576
71	36,472	977	27,814	6,160	89	786	19	57	570
72	37,892	1,284	23,153	11,456	87	1,265	20	35	592
73	38,232	1,137	11,672	24,346	96	360	28	52	541
74	36,776	874	13,381	21,534	84	368	9	42	484
75	37,179	2,418	27,136	5,967	122	820	77	45	594
76	38,180	2,905	9,964	23,317	105	1,071	54	60	704
77	38,188	1,832	13,551	21,543	89	503	26	46	598
78	37,517	3,610	20,763	10,524	120	1,464	68	68	900
79	38,199	1,915	13,704	20,163	85	1,269	48	97	918
80	36,713	1,657	18,744	15,154	124	306	26	46	656
81	38,027	1,240	30,392	4,970	138	694	16	46	531
82	37,254	2,042	14,466	20,068	109	87	14	49	419
83	38,176	1,775	27,658	7,689	87	315	17	56	579
84	38,210	2,282	26,101	8,836	167	139	5	43	637
85	38,145	1,002	30,458	5,250	95	709	17	54	560
86	38,206	2,105	26,147	8,965	161	181	11	28	608
87	38,176	1,345	33,092	2,708	93	501	4	41	392
88	38,058	1,786	30,537	4,415	181	448	9	38	644
89	38,033	4,352	25,012	7,276	124	615	14	58	582
90	36,348	900	19,003	15,767	165	129	9	14	361
91	37,287	658	15,292	20,584	155	174	3	27	394
92	36,655	2,364	25,661	6,300	199	1,047	37	90	957
93	37,470	1,608	17,685	17,399	177	113	11	23	454
94	36,402	1,321	26,312	7,132	171	445	36	43	942
95	37,021	768	11,831	23,339	94	553	8	29	399
96	38,199	2,199	30,726	4,175	217	144	10	37	691

97	36,722	1,154	24,068	10,092	538	173	9	33	655
98	36,606	1,917	25,163	7,349	129	971	56	64	957
99	37,061	2,030	29,675	3,795	102	855	29	59	516
100	36,422	1,546	26,638	6,954	218	355	29	44	638
101	36,426	711	12,977	22,213	108	150	3	27	237
102	37,666	705	16,562	19,655	201	87	6	32	418
103	36,535	1,068	15,630	19,307	73	112	1	27	317
104	36,888	1,828	29,836	4,239	184	307	14	17	463
105	37,637	1,738	27,838	7,255	156	173	8	24	445
106	36,572	963	33,534	1,143	88	279	57	39	469
107	37,203	4,532	26,835	4,086	167	620	84	146	733
108	36,438	1,038	28,462	6,404	83	211	9	9	222
109	37,806	3,468	12,075	20,686	114	679	34	61	689
110	37,422	916	32,799	2,711	58	547	6	29	356
111	36,653	1,017	13,954	20,719	89	346	29	33	466
112	36,943	955	32,141	2,910	64	480	9	31	353
113	37,013	3,915	11,688	20,176	127	307	45	47	708
114	36,571	1,269	28,386	5,531	78	665	37	60	545
115	37,284	716	32,132	3,605	62	342	13	55	359
116	36,473	1,871	18,850	14,979	121	225	8	27	392
117	36,767	3,019	21,370	9,813	223	1,010	36	230	1,066
118	37,232	7,253	23,244	5,682	68	476	9	44	456
119	37,330	1,651	25,422	9,098	84	577	58	25	415
120	36,550	4,651	25,885	4,897	76	379	11	53	598
121	36,511	1,691	13,241	20,730	90	179	30	48	502
122	36,615	2,296	14,730	18,987	72	164	12	23	331
123	37,114	5,721	28,113	2,626	40	333	2	47	232
124	37,150	2,705	25,354	7,549	127	621	26	44	724

¹American Indian and Alaska Native Alone, Not Latino

²Native Hawaiian and Pacific Islander Alone, Not Latino

2020 Population by Race and Ethnicity at State House District Level

DISTRICT	Total Population	Hispanic or Latino Origin	White Alone, not Latino	African American Alone, not Latino	AIAN Alone, not Latino ¹	Asian Alone, not Latino	NHPI Alone, not Latino ²	Other Alone, not Latino	Two or More, not Latino
1	37,760	2,595	32,448	803	96	128	5	69	1,616
2	40,848	1,789	32,248	4,316	80	463	11	113	1,828
3	44,523	2,096	34,722	3,350	89	2,232	14	175	1,845
4	39,761	1,268	35,175	1,205	119	108	7	98	1,781
5	41,973	2,614	33,317	3,634	86	361	14	135	1,812
6	42,643	2,058	31,436	6,323	81	802	14	156	1,773
7	37,148	1,023	28,465	5,936	85	119	1	101	1,418
8	38,931	1,558	28,578	6,775	60	259	17	126	1,558
9	40,759	2,552	28,624	7,406	101	462	1	130	1,483
10	46,061	4,318	35,364	3,468	109	774	8	193	1,827
11	35,235	1,149	24,726	7,858	65	113	14	94	1,216
12	34,896	3,304	13,459	16,875	70	162	10	88	928
13	38,589	1,448	27,765	7,382	58	520	30	108	1,278
14	38,778	1,982	27,664	7,493	70	138	8	122	1,301
15	46,108	8,904	20,631	12,085	154	1,794	42	352	2,146
16	44,647	3,566	27,570	11,050	100	378	36	182	1,765
17	42,648	1,979	36,389	1,964	111	239	20	139	1,807
18	45,995	4,274	34,502	4,222	76	965	16	187	1,753
19	41,869	9,275	24,692	5,619	69	537	41	143	1,493
20	41,056	4,625	29,096	4,024	71	1,409	22	192	1,617
21	43,450	2,899	32,544	2,778	64	3,253	15	223	1,674
22	42,079	3,389	31,124	4,086	75	1,655	68	206	1,476
23	40,278	6,480	15,997	15,848	59	435	33	146	1,280
24	47,215	4,687	33,115	6,263	62	1,205	65	198	1,620
25	40,802	6,009	12,724	19,885	56	341	31	220	1,536
26	57,221	4,928	39,020	6,428	166	3,865	16	229	2,569
27	42,566	4,102	27,945	7,340	76	1,027	41	220	1,815

28	47,119	4,155	32,318	7,790	80	607	17	239	1,913
29	38,863	1,696	29,055	6,094	189	246	12	119	1,452
30	37,293	2,012	26,308	7,323	100	210	5	106	1,229
31	40,409	4,815	12,841	19,907	78	1,103	24	227	1,414
32	39,846	2,407	28,833	6,165	99	883	57	119	1,283
33	38,575	1,590	29,763	5,135	90	604	20	73	1,300
34	42,947	4,144	24,457	10,655	109	1,677	19	168	1,718
35	55,163	4,006	40,198	6,342	97	1,923	37	302	2,258
36	44,971	6,136	28,369	7,730	73	702	20	149	1,792
37	44,998	4,893	29,631	7,025	89	1,587	11	111	1,651
38	44,571	2,179	36,996	2,980	102	603	13	88	1,610
39	37,789	4,412	25,983	5,915	117	97	5	87	1,173
40	37,719	3,305	22,635	10,360	107	135	4	72	1,101
41	36,356	999	14,251	19,239	99	368	18	122	1,260
42	36,117	806	23,747	10,106	65	153	4	87	1,149
43	36,769	1,163	25,397	7,937	326	302	15	168	1,461
44	37,555	2,342	21,963	11,696	107	107	2	103	1,235
45	66,141	4,877	47,925	7,326	819	2,211	17	265	2,701
46	40,799	3,217	26,767	8,145	176	780	21	163	1,530
47	45,838	2,444	35,646	4,659	170	633	11	197	2,078
48	49,275	3,852	33,397	7,194	158	2,338	19	245	2,072
49	39,411	1,899	15,903	19,567	153	255	33	162	1,439
50	33,156	894	13,524	17,420	106	152	18	81	961
51	34,279	1,367	9,295	22,155	102	327	18	67	948
52	40,415	1,953	26,260	10,221	76	235	8	144	1,518
53	33,411	1,444	20,030	10,210	137	209	3	73	1,305
54	33,464	868	15,296	15,100	837	126	8	69	1,160
55	32,254	945	15,228	13,925	912	62	2	73	1,107
56	55,781	3,992	40,799	6,688	189	1,107	32	385	2,589
57	32,669	908	13,124	17,379	165	132	3	54	904
58	45,326	3,066	31,623	8,273	182	297	30	130	1,725

59	35,248	937	10,921	22,008	68	174	15	83	1,042
60	35,568	1,253	21,874	10,952	97	392	6	48	946
61	33,397	700	16,904	14,552	105	129	4	114	889
62	35,252	736	13,391	19,906	74	154	8	97	886
63	40,332	1,531	25,136	10,677	75	1,590	19	115	1,189
64	32,279	969	14,556	15,634	117	210	8	81	704
65	34,695	1,181	25,525	6,433	107	227	0	82	1,140
66	33,320	856	10,917	20,292	206	159	2	68	820
67	40,124	1,855	24,078	11,177	117	791	47	138	1,921
68	49,304	5,209	37,236	3,194	154	838	55	203	2,415
69	43,919	2,481	31,132	5,917	73	2,353	40	177	1,746
70	35,779	1,697	11,014	20,953	98	497	16	157	1,347
71	45,877	1,863	31,892	8,411	96	1,478	25	206	1,906
72	42,434	1,937	25,046	11,671	61	1,981	18	172	1,548
73	34,686	1,483	10,247	21,136	68	401	41	141	1,169
74	36,040	1,338	14,160	18,546	63	605	23	89	1,216
75	34,295	2,604	24,648	5,044	90	812	26	85	986
76	39,399	3,721	8,053	24,790	94	1,268	45	203	1,225
77	50,725	3,040	14,831	29,591	103	1,053	75	249	1,783
78	42,381	4,840	20,387	13,379	117	1,845	82	196	1,535
79	41,922	2,746	11,273	24,613	88	1,184	45	282	1,691
80	38,758	2,255	17,388	16,930	108	335	47	170	1,525
81	43,658	2,070	31,524	7,374	92	796	21	140	1,641
82	34,658	2,188	14,102	16,839	99	130	9	147	1,144
83	40,936	2,983	27,601	7,867	90	514	27	203	1,651
84	39,378	3,109	25,080	8,848	186	249	21	136	1,749
85	42,151	1,830	31,127	6,240	109	1,036	61	151	1,597
86	38,388	2,814	25,516	8,055	136	209	24	137	1,497
87	51,197	2,912	40,653	4,141	122	1,135	26	205	2,003
88	41,052	2,901	28,962	6,189	156	624	24	152	2,044
89	39,421	4,626	24,494	7,422	111	1,077	7	132	1,552

90	32,550	850	17,573	12,806	162	130	6	75	948
91	32,543	763	13,390	17,046	163	194	14	80	893
92	38,062	3,886	23,807	6,574	197	1,104	25	312	2,157
93	35,061	1,772	16,462	15,300	193	164	10	110	1,050
94	40,592	2,477	27,007	7,939	166	596	41	228	2,138
95	34,092	825	9,945	21,634	131	650	32	100	775
96	41,406	4,168	29,386	5,320	180	234	20	162	1,936
97	46,324	2,493	29,885	10,814	504	359	28	161	2,080
98	46,416	3,435	27,578	10,446	152	1,807	84	268	2,646
99	51,031	3,778	40,048	3,735	97	1,185	39	196	1,953
100	60,683	3,787	40,452	11,765	289	944	49	283	3,114
101	33,326	657	12,323	19,387	99	168	1	65	626
102	36,863	1,073	17,411	16,642	213	154	19	134	1,217
103	34,435	1,136	15,019	17,320	52	110	15	69	714
104	50,270	2,298	41,455	4,059	212	460	41	142	1,603
105	45,003	2,391	31,947	8,224	164	315	14	129	1,819
106	49,026	1,647	43,504	1,432	90	484	88	149	1,632
107	47,930	5,353	33,751	5,214	138	1,059	39	263	2,113
108	44,677	1,553	36,217	5,243	83	312	16	112	1,141
109	38,114	5,184	11,257	19,216	106	771	58	185	1,337
110	38,277	1,347	33,012	2,170	47	596	10	86	1,009
111	36,100	1,520	18,130	14,628	110	464	55	102	1,091
112	50,251	1,722	43,220	2,476	62	1,165	12	168	1,426
113	43,129	5,758	15,527	19,053	162	624	46	236	1,723
114	43,797	2,370	32,677	5,593	85	1,036	42	187	1,807
115	41,168	1,122	35,137	2,868	75	491	13	132	1,330
116	43,934	2,861	25,701	13,159	138	503	21	147	1,404
117	47,715	6,175	22,474	13,830	253	1,346	47	674	2,916
118	51,734	9,684	33,996	5,483	112	714	18	182	1,545
119	47,854	2,550	34,207	7,969	81	1,029	63	185	1,770
120	46,957	5,915	33,478	5,020	85	647	38	141	1,633

121	37,295	2,759	14,724	18,085	93	296	30	137	1,171
122	33,350	2,801	13,587	15,852	67	167	34	90	752
123	37,748	4,968	29,375	2,092	43	287	5	137	841
124	41,021	3,438	28,320	6,779	90	668	39	175	1,512

¹American Indian and Alaska Native Alone, Not Latino

²Native Hawaiian and Pacific Islander Alone, Not Latino

Percent Change in Population from 2010 to 2020 by Race and Ethnicity at State House District Level

DISTRICT	Total Population	Hispanic or Latino Origin	White Alone, not Latino	African American Alone, not Latino	AIAN Alone, not Latino ¹	Asian Alone, not Latino	NHPI Alone, not Latino ²	Other Alone, not Latino	Two or More, not Latino
1	3.48%	20.08%	-0.87%	-23.08%	35.21%	17.43%	0.00%	527.27%	352.66%
2	8.10%	50.59%	3.76%	-4.22%	-1.23%	48.40%	266.67%	276.67%	210.88%
3	16.83%	111.29%	9.24%	5.41%	45.90%	43.35%	250.00%	257.14%	281.99%
4	4.14%	47.10%	-0.43%	-11.00%	80.30%	10.20%	40.00%	276.92%	304.77%
5	10.35%	51.98%	2.91%	17.80%	21.13%	51.05%	180.00%	255.26%	261.68%
6	12.10%	57.22%	6.27%	6.66%	-8.99%	68.13%	40.00%	290.00%	192.57%
7	1.94%	68.81%	-1.31%	-5.87%	-5.56%	41.67%	inf	405.00%	189.39%
8	5.58%	51.12%	1.02%	0.86%	-20.00%	3.60%	88.89%	231.58%	234.33%
9	8.43%	92.89%	3.12%	-2.59%	24.69%	47.13%	-50.00%	251.35%	214.19%
10	20.75%	127.38%	5.99%	71.01%	12.37%	192.08%	-20.00%	348.84%	316.17%
11	-3.91%	72.26%	-5.65%	-13.56%	-23.53%	14.14%	133.33%	141.03%	157.63%
12	-4.66%	12.23%	-1.59%	-13.00%	2.94%	25.58%	25.00%	41.94%	190.00%
13	1.24%	69.56%	-6.44%	10.48%	-15.94%	15.81%	650.00%	237.50%	264.10%
14	2.22%	51.07%	-0.74%	-8.62%	-2.78%	64.29%	0.00%	369.23%	255.46%
15	25.66%	48.45%	13.33%	26.56%	-1.28%	18.73%	5.00%	55.07%	112.90%
16	16.99%	77.59%	10.52%	6.43%	1.01%	116.00%	89.47%	378.95%	255.85%
17	11.63%	62.35%	6.70%	-2.92%	6.73%	23.20%	100.00%	61.63%	288.60%
18	20.44%	49.81%	12.03%	21.15%	20.63%	113.02%	60.00%	334.88%	261.44%
19	10.34%	38.78%	-2.12%	16.50%	-32.35%	14.01%	583.33%	126.98%	162.85%
20	7.69%	43.95%	0.33%	-3.87%	-5.33%	32.80%	-33.33%	291.84%	218.93%

21	13.89%	50.52%	4.32%	35.91%	-5.88%	37.49%	150.00%	271.67%	246.58%
22	10.08%	34.86%	2.35%	26.11%	5.63%	17.13%	94.29%	160.76%	217.42%
23	10.73%	52.18%	29.59%	-15.34%	-16.90%	71.26%	26.92%	180.77%	96.92%
24	24.60%	88.46%	13.79%	25.56%	-19.48%	71.90%	364.29%	266.67%	244.68%
25	11.11%	95.41%	6.08%	-4.27%	-21.13%	131.97%	520.00%	478.95%	148.54%
26	55.01%	156.13%	33.26%	67.40%	22.06%	261.89%	6.67%	308.93%	332.49%
27	11.43%	47.24%	2.01%	15.85%	28.81%	19.84%	-2.38%	158.82%	183.59%
28	26.30%	73.41%	12.55%	49.18%	21.21%	80.12%	-19.05%	273.44%	293.62%
29	4.25%	45.70%	-0.54%	0.84%	13.86%	6.96%	140.00%	526.32%	230.00%
30	0.47%	27.42%	-3.46%	-2.77%	14.94%	17.32%	0.00%	178.95%	174.94%
31	8.18%	61.90%	5.31%	-4.40%	0.00%	54.05%	242.86%	312.73%	179.45%
32	7.94%	82.35%	0.46%	8.44%	94.12%	35.85%	307.14%	310.34%	176.51%
33	1.40%	46.68%	-2.98%	-1.10%	2.27%	4.32%	566.67%	192.00%	231.63%
34	14.07%	56.79%	1.92%	18.19%	55.71%	22.32%	171.43%	330.77%	236.86%
35	44.22%	125.94%	29.96%	55.02%	61.67%	142.50%	164.29%	403.33%	328.46%
36	20.02%	59.46%	10.57%	13.43%	0.00%	54.97%	150.00%	175.93%	217.73%
37	23.70%	58.30%	11.60%	39.14%	5.95%	50.71%	83.33%	88.14%	241.12%
38	16.65%	69.84%	12.49%	0.30%	27.50%	29.12%	0.00%	300.00%	233.33%
39	-1.14%	16.87%	-2.18%	-18.74%	6.36%	-6.73%	-76.19%	148.57%	247.04%
40	0.56%	22.86%	-0.24%	-10.17%	8.08%	16.38%	-60.00%	100.00%	229.64%
41	-2.02%	47.13%	-1.85%	-8.55%	10.00%	56.60%	350.00%	148.98%	156.10%
42	-5.44%	52.94%	-9.98%	-5.05%	-18.75%	37.84%	-71.43%	200.00%	179.56%
43	-0.42%	48.53%	-5.58%	-2.99%	29.37%	43.81%	400.00%	281.82%	164.20%
44	-1.31%	45.38%	-6.37%	-5.50%	18.89%	27.38%	-75.00%	74.58%	236.51%
45	78.25%	160.66%	64.95%	68.38%	3.15%	405.95%	142.86%	488.89%	394.69%
46	8.70%	71.39%	-3.68%	27.78%	-1.12%	15.90%	40.00%	201.85%	167.95%
47	23.39%	102.82%	15.07%	19.28%	22.30%	76.32%	57.14%	535.48%	295.81%
48	32.01%	40.38%	17.77%	55.68%	-8.67%	197.46%	-9.52%	410.42%	260.98%
49	6.57%	97.81%	3.82%	-0.55%	-10.00%	12.83%	266.67%	315.38%	146.40%
50	-9.31%	19.36%	-6.16%	-15.68%	-18.46%	-19.15%	38.46%	237.50%	151.57%
51	-6.87%	16.34%	-16.63%	-6.04%	7.37%	9.36%	-50.00%	81.08%	117.93%

52	5.67%	47.62%	3.03%	-4.73%	-9.52%	39.05%	-27.27%	323.53%	270.24%
53	-8.26%	13.08%	-11.68%	-12.07%	-24.73%	54.81%	-66.67%	92.11%	166.33%
54	-8.72%	-16.70%	-9.64%	-11.63%	-12.08%	28.57%	166.67%	213.64%	119.70%
55	-12.03%	2.61%	-13.37%	-15.11%	-16.71%	-20.51%	-75.00%	82.50%	104.62%
56	46.72%	88.75%	41.22%	23.69%	48.82%	74.88%	39.13%	400.00%	247.05%
57	-10.83%	-1.63%	-14.74%	-11.16%	-1.79%	-28.26%	0.00%	200.00%	134.20%
58	24.40%	69.77%	23.53%	1.48%	9.64%	92.86%	328.57%	271.43%	234.30%
59	-3.18%	55.65%	-11.31%	-3.31%	-44.26%	-0.57%	66.67%	336.84%	157.92%
60	-2.24%	33.30%	-7.34%	-1.50%	-23.62%	56.80%	100.00%	33.33%	215.33%
61	-8.26%	-10.03%	-9.34%	-11.05%	-19.23%	14.16%	0.00%	293.10%	156.94%
62	-7.77%	6.67%	-11.92%	-8.74%	-12.94%	90.12%	inf	646.15%	162.91%
63	10.88%	101.71%	-4.49%	39.20%	-2.60%	41.21%	171.43%	130.00%	221.35%
64	-12.77%	-0.10%	-7.66%	-20.79%	64.79%	-1.87%	33.33%	710.00%	203.45%
65	-4.99%	53.98%	-8.02%	-11.10%	-6.96%	41.88%	-100.00%	70.83%	162.07%
66	-9.57%	20.90%	-5.55%	-14.81%	-16.60%	15.22%	-33.33%	209.09%	132.95%
67	7.39%	24.08%	-3.55%	18.28%	5.41%	40.75%	74.07%	150.91%	174.82%
68	30.38%	51.38%	24.19%	15.56%	1.32%	40.84%	44.74%	283.02%	205.70%
69	16.91%	45.43%	8.90%	10.21%	-23.96%	103.72%	5.26%	185.48%	215.16%
70	-1.99%	53.30%	-6.11%	-7.11%	-3.92%	36.16%	-48.39%	336.11%	133.85%
71	25.79%	90.69%	14.66%	36.54%	7.87%	88.04%	31.58%	261.40%	234.39%
72	11.99%	50.86%	8.18%	1.88%	-29.89%	56.60%	-10.00%	391.43%	161.49%
73	-9.27%	30.43%	-12.21%	-13.18%	-29.17%	11.39%	46.43%	171.15%	116.08%
74	-2.00%	53.09%	5.82%	-13.88%	-25.00%	64.40%	155.56%	111.90%	151.24%
75	-7.76%	7.69%	-9.17%	-15.47%	-26.23%	-0.98%	-66.23%	88.89%	65.99%
76	3.19%	28.09%	-19.18%	6.32%	-10.48%	18.39%	-16.67%	238.33%	74.01%
77	32.83%	65.94%	9.45%	37.36%	15.73%	109.34%	188.46%	441.30%	198.16%
78	12.96%	34.07%	-1.81%	27.13%	-2.50%	26.02%	20.59%	188.24%	70.56%
79	9.75%	43.39%	-17.74%	22.07%	3.53%	-6.70%	-6.25%	190.72%	84.20%
80	5.57%	36.09%	-7.23%	11.72%	-12.90%	9.48%	80.77%	269.57%	132.47%
81	14.81%	66.94%	3.72%	48.37%	-33.33%	14.70%	31.25%	204.35%	209.04%
82	-6.97%	7.15%	-2.52%	-16.09%	-9.17%	49.43%	-35.71%	200.00%	173.03%

83	7.23%	68.06%	-0.21%	2.31%	3.45%	63.17%	58.82%	262.50%	185.15%
84	3.06%	36.24%	-3.91%	0.14%	11.38%	79.14%	320.00%	216.28%	174.57%
85	10.50%	82.63%	2.20%	18.86%	14.74%	46.12%	258.82%	179.63%	185.18%
86	0.48%	33.68%	-2.41%	-10.15%	-15.53%	15.47%	118.18%	389.29%	146.22%
87	34.11%	116.51%	22.85%	52.92%	31.18%	126.55%	550.00%	400.00%	410.97%
88	7.87%	62.43%	-5.16%	40.18%	-13.81%	39.29%	166.67%	300.00%	217.39%
89	3.65%	6.30%	-2.07%	2.01%	-10.48%	75.12%	-50.00%	127.59%	166.67%
90	-10.45%	-5.56%	-7.53%	-18.78%	-1.82%	0.78%	-33.33%	435.71%	162.60%
91	-12.72%	15.96%	-12.44%	-17.19%	5.16%	11.49%	366.67%	196.30%	126.65%
92	3.84%	64.38%	-7.22%	4.35%	-1.01%	5.44%	-32.43%	246.67%	125.39%
93	-6.43%	10.20%	-6.92%	-12.06%	9.04%	45.13%	-9.09%	378.26%	131.28%
94	11.51%	87.51%	2.64%	11.32%	-2.92%	33.93%	13.89%	430.23%	126.96%
95	-7.91%	7.42%	-15.94%	-7.31%	39.36%	17.54%	300.00%	244.83%	94.24%
96	8.40%	89.54%	-4.36%	27.43%	-17.05%	62.50%	100.00%	337.84%	180.17%
97	26.15%	116.03%	24.17%	7.15%	-6.32%	107.51%	211.11%	387.88%	217.56%
98	26.80%	79.19%	9.60%	42.14%	17.83%	86.10%	50.00%	318.75%	176.49%
99	37.69%	86.11%	34.96%	-1.58%	-4.90%	38.60%	34.48%	232.20%	278.49%
100	66.61%	144.95%	51.86%	69.18%	32.57%	165.92%	68.97%	543.18%	388.09%
101	-8.51%	-7.59%	-5.04%	-12.72%	-8.33%	12.00%	-66.67%	140.74%	164.14%
102	-2.13%	52.20%	5.13%	-15.33%	5.97%	77.01%	216.67%	318.75%	191.15%
103	-5.75%	6.37%	-3.91%	-10.29%	-28.77%	-1.79%	1400.00%	155.56%	125.24%
104	36.28%	25.71%	38.94%	-4.25%	15.22%	49.84%	192.86%	735.29%	246.22%
105	19.57%	37.57%	14.76%	13.36%	5.13%	82.08%	75.00%	437.50%	308.76%
106	34.05%	71.03%	29.73%	25.28%	2.27%	73.48%	54.39%	282.05%	247.97%
107	28.83%	18.12%	25.77%	27.61%	-17.37%	70.81%	-53.57%	80.14%	188.27%
108	22.61%	49.61%	27.25%	-18.13%	0.00%	47.87%	77.78%	1144.44%	413.96%
109	0.81%	49.48%	-6.77%	-7.11%	-7.02%	13.55%	70.59%	203.28%	94.05%
110	2.28%	47.05%	0.65%	-19.96%	-18.97%	8.96%	66.67%	196.55%	183.43%
111	-1.51%	49.46%	29.93%	-29.40%	23.60%	34.10%	89.66%	209.09%	134.12%
112	36.02%	80.31%	34.47%	-14.91%	-3.13%	142.71%	33.33%	441.94%	303.97%
113	16.52%	47.08%	32.85%	-5.57%	27.56%	103.26%	2.22%	402.13%	143.36%

114	19.76%	86.76%	15.12%	1.12%	8.97%	55.79%	13.51%	211.67%	231.56%
115	10.42%	56.70%	9.35%	-20.44%	20.97%	43.57%	0.00%	140.00%	270.47%
116	20.46%	52.91%	36.34%	-12.15%	14.05%	123.56%	162.50%	444.44%	258.16%
117	29.78%	104.54%	5.17%	40.94%	13.45%	33.27%	30.56%	193.04%	173.55%
118	38.95%	33.52%	46.26%	-3.50%	64.71%	50.00%	100.00%	313.64%	238.82%
119	28.19%	54.45%	34.56%	-12.41%	-3.57%	78.34%	8.62%	640.00%	326.51%
120	28.47%	27.18%	29.33%	2.51%	11.84%	70.71%	245.45%	166.04%	173.08%
121	2.15%	63.16%	11.20%	-12.76%	3.33%	65.36%	0.00%	185.42%	133.27%
122	-8.92%	21.99%	-7.76%	-16.51%	-6.94%	1.83%	183.33%	291.30%	127.19%
123	1.71%	-13.16%	4.49%	-20.34%	7.50%	-13.81%	150.00%	191.49%	262.50%
124	10.42%	27.10%	11.70%	-10.20%	-29.13%	7.57%	50.00%	297.73%	108.84%

¹American Indian and Alaska Native Alone, Not Latino

²Native Hawaiian and Pacific Islander Alone, Not Latino

Variable definitions

District shapefiles were retrieved from the Redistricting Data Hub, All About Redistricting, and the U.S. Census. The list of variables below can be found in the P1 and P2 table of the PL 94-171. Data was retrieved from the Redistricting Data Hub processed legacy file of the PL 94-171.

Variable Name in Report	Census Variable Reference
Total Population	P0010001
Hispanic or Latino Origin	P0020002
White Alone, not Latino	P0020005
African American Alone, not Latino	P0020006
American Indian and Alaska Native Alone, not Latino	P0020007
Asian Alone, not Latino	P0020008
Native Hawaiian and Pacific Islander Alone, not Latino	P0020009
Other Alone, not Latino	P0020010
Two or More, not Latino	P0020011