

HAYSTAQ DNA

Oregon

Overview	2
Congressional	2
Total Population	3
Population by Race and Ethnicity	4
State Senate	8
Total Population	9
Population by Race and Ethnicity	11
Eugene	15
Portland	20
Salem	25
State House	33
Total Population	34
Population by Race and Ethnicity	37
Bend	42
Eugene	48
Medford	54
Portland	60
Salem	66
Variable definitions	78

Overview

The population of Oregon grew by 406,175, an increase of 10.6%. Oregon is gaining a congressional seat for a new total of six districts. All five current districts experienced population growth between 7% and 13%. Oregon will gain a congressional seat during this redistricting cycle.

The White population grew by 30,305 people, an increase of 1.01%. District 2 in the eastern half of the state grew by 3.07%. District 4 in southwest Oregon decreased by -0.42%. The overall share of population decreased from 78.46% in 2010 to 71.65% in 2020.

The Hispanic population grew by 138,694 people, an increase of 30.82% from 2010. All five congressional districts experienced growth between 28% and 41%. The overall share of population increased from 11.75% in 2010 to 13.89% in 2020.

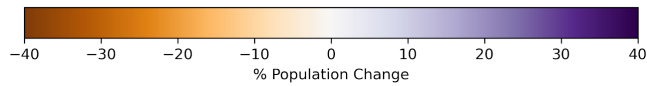
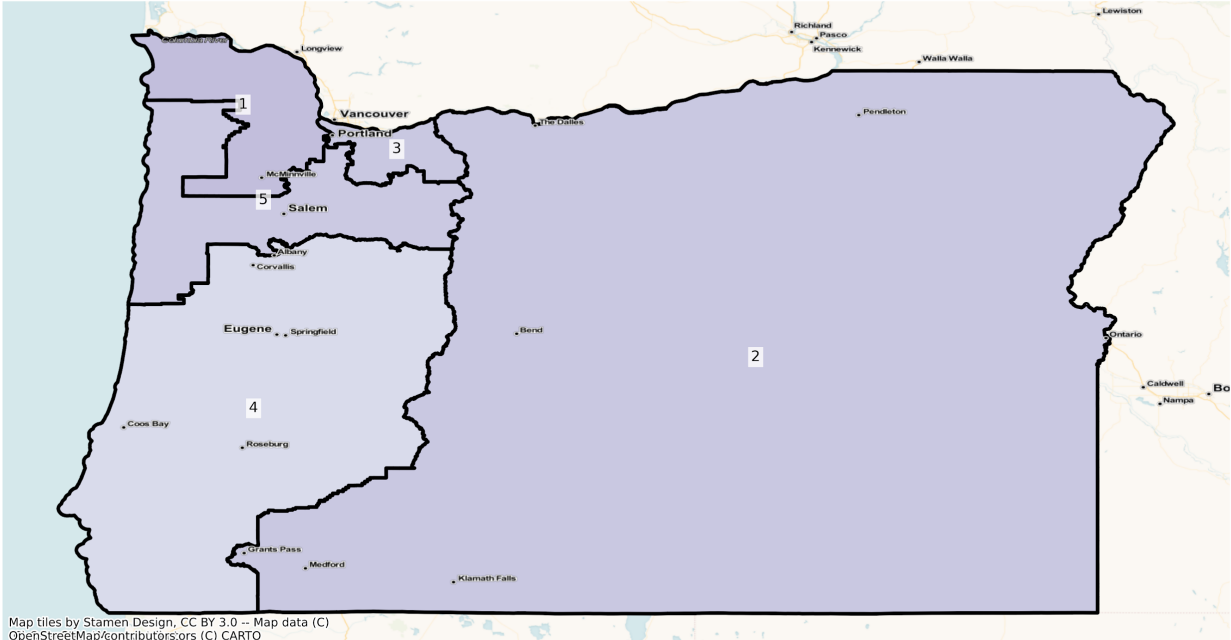
The Asian population grew by 52,361 people, an increase of 37.55% from 2010. All five districts experienced growth in the Asian population between 24% and 50%. The overall share of population increased from 3.64% in 2010 to 4.53% in 2020.

Congressional

The charts below display the percent change in population from 2010 to 2020 for the listed group. Please note that the color bars are fixed to be from -40% to 40% and these maps are displayed in brown to purple. If the percent change in population was outside of this range, the color scheme changes to red to green to indicate a change.

Total Population

OR Congressional Districts
Population % Change from 2010 to 2020
Total Population

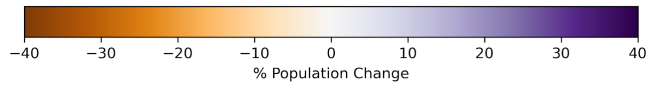
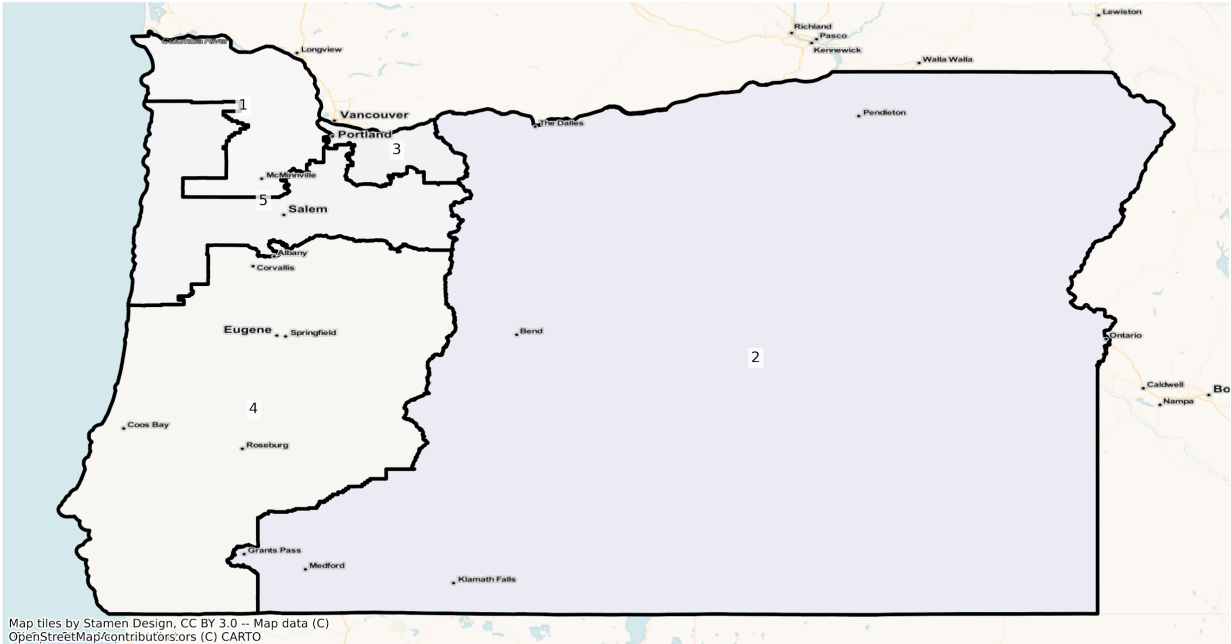


Total Population from 2010 to 2020 at Congressional District Level

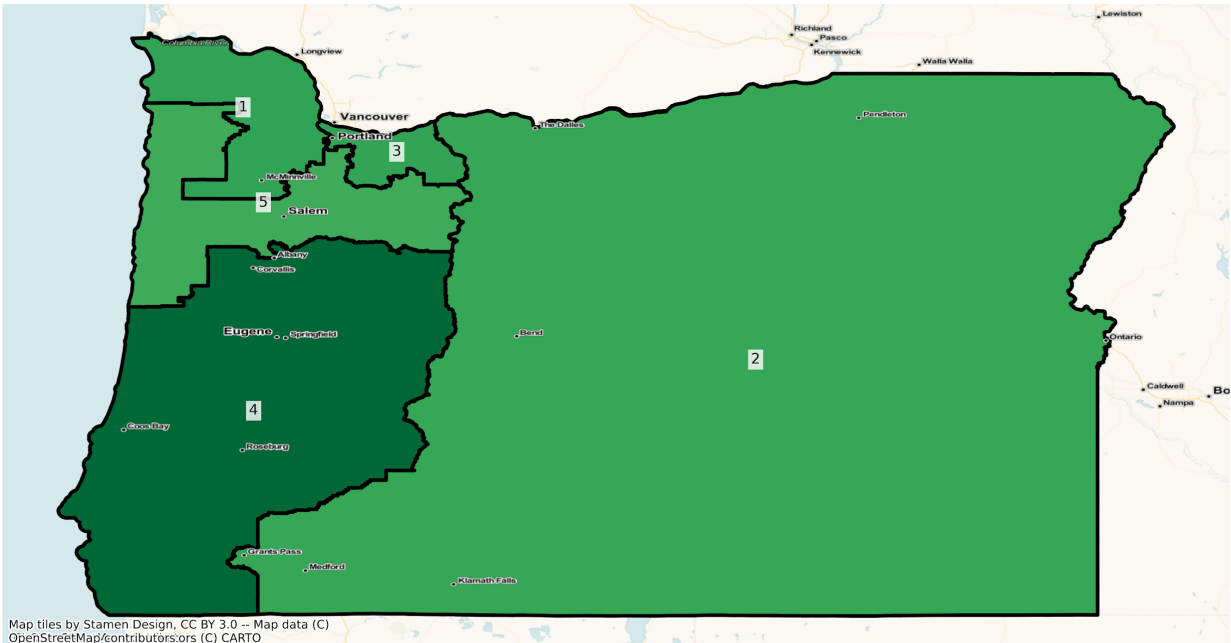
DISTRICT	Total Population 2010	Total Population 2020	Total Population % Change
1	766,200	863,903	12.75%
2	766,263	850,993	11.06%
3	766,238	851,078	11.07%
4	766,100	823,567	7.50%
5	766,267	847,702	10.63%

Population by Race and Ethnicity

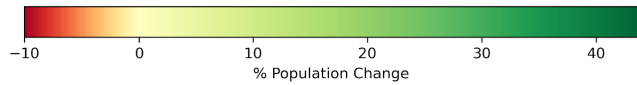
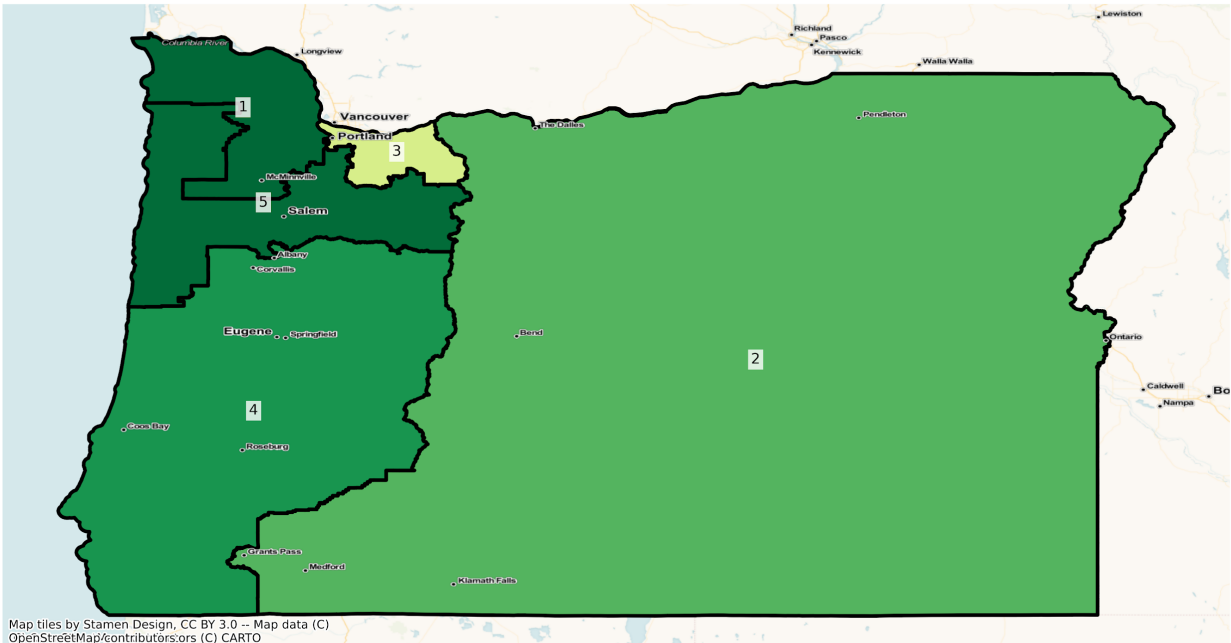
OR Congressional Districts
Population % Change from 2010 to 2020
Ethnicity: Not Latino White alone



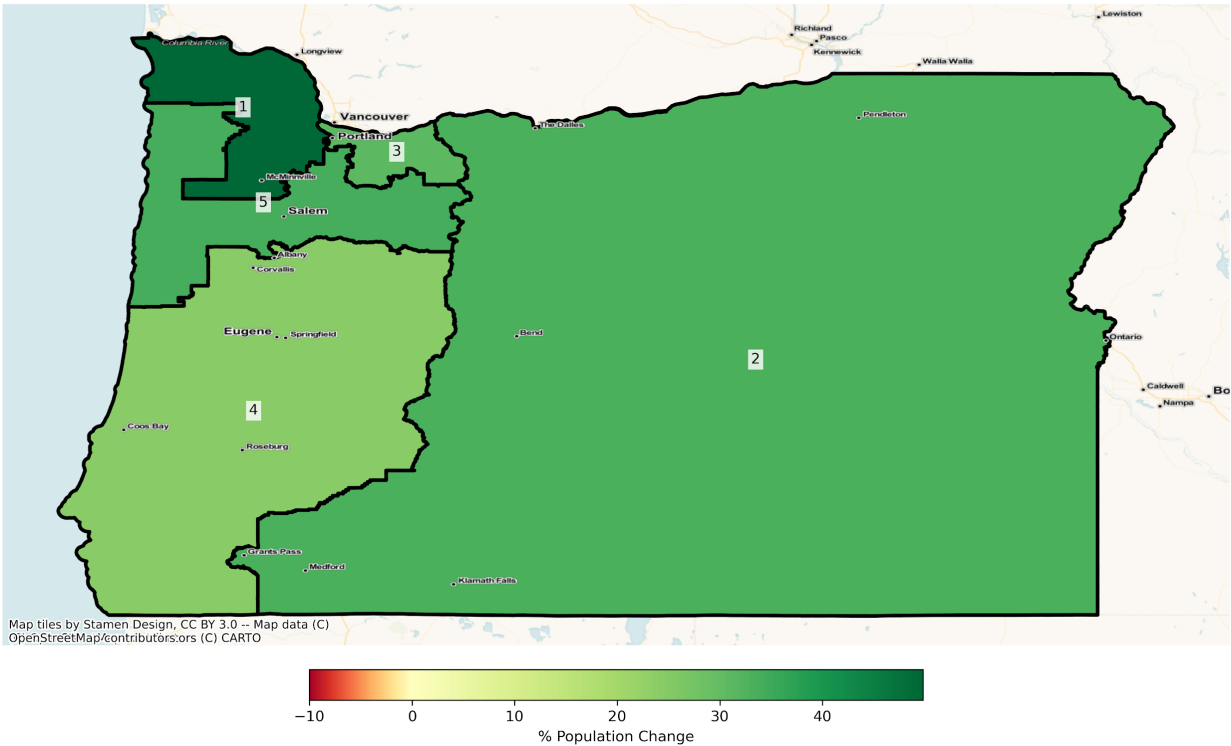
OR Congressional Districts
Population % Change from 2010 to 2020
Ethnicity: Hispanic or Latino



OR Congressional Districts
Population % Change from 2010 to 2020
Ethnicity: Not Latino African American alone



OR Congressional Districts
Population % Change from 2010 to 2020
Ethnicity: Not Latino Asian alone



2010 Population by Race and Ethnicity at Congressional District Level

DISTRICT	Total Population	Hispanic or Latino Origin	White Alone, not Latino	African American Alone, not Latino	AIAN Alone, not Latino ¹	Asian Alone, not Latino	NHPI Alone, not Latino ²	Other Alone, not Latino	Two or More, not Latino
1	766,200	104,932	567,711	10,793	5,003	50,530	2,687	1,259	23,285
2	766,263	94,666	626,760	3,836	14,521	7,144	1,492	741	17,103
3	766,238	82,213	558,950	39,430	5,839	47,629	3,899	1,518	26,760
4	766,100	51,425	659,001	4,897	9,202	15,474	1,333	1,051	23,717
5	766,267	116,826	593,420	6,028	8,141	18,659	3,286	933	18,974

¹American Indian and Alaska Native Alone, Not Latino

²Native Hawaiian and Pacific Islander Alone, Not Latino

2020 Population by Race and Ethnicity at Congressional District Level

DISTRICT	Total Population	Hispanic or Latino Origin	White Alone, not Latino	African American Alone, not Latino	AIAN Alone, not Latino ¹	Asian Alone, not Latino	NHPI Alone, not Latino ²	Other Alone, not Latino	Two or More, not Latino
1	863,903	136,675	569,184	15,504	4,988	75,683	3,736	4,642	53,491
2	850,993	122,647	646,010	4,920	14,215	9,533	2,244	4,467	46,957
3	851,078	106,836	566,529	42,991	5,739	62,330	5,294	4,881	56,478
4	823,567	72,479	656,204	6,632	8,862	19,240	1,791	4,656	53,703
5	847,702	150,119	598,220	8,611	8,238	25,011	5,132	4,316	48,055

¹American Indian and Alaska Native Alone, Not Latino

²Native Hawaiian and Pacific Islander Alone, Not Latino

Percent Change in Population from 2010 to 2020 by Race and Ethnicity at Congressional District Level

DISTRICT	Total Population	Hispanic or Latino Origin	White Alone, not Latino	African American Alone, not Latino	AIAN Alone, not Latino ¹	Asian Alone, not Latino	NHPI Alone, not Latino ²	Other Alone, not Latino	Two or More, not Latino
1	12.75%	30.25%	0.26%	43.65%	-0.30%	49.78%	39.04%	268.71%	129.72%
2	11.06%	29.56%	3.07%	28.26%	-2.11%	33.44%	50.40%	502.83%	174.55%
3	11.07%	29.95%	1.36%	9.03%	-1.71%	30.87%	35.78%	221.54%	111.05%
4	7.50%	40.94%	-0.42%	35.43%	-3.69%	24.34%	34.36%	343.01%	126.43%
5	10.63%	28.50%	0.81%	42.85%	1.19%	34.04%	56.18%	362.59%	153.27%

¹American Indian and Alaska Native Alone, Not Latino

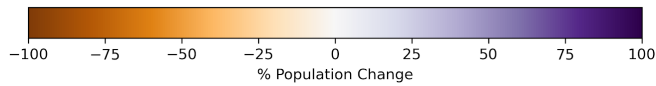
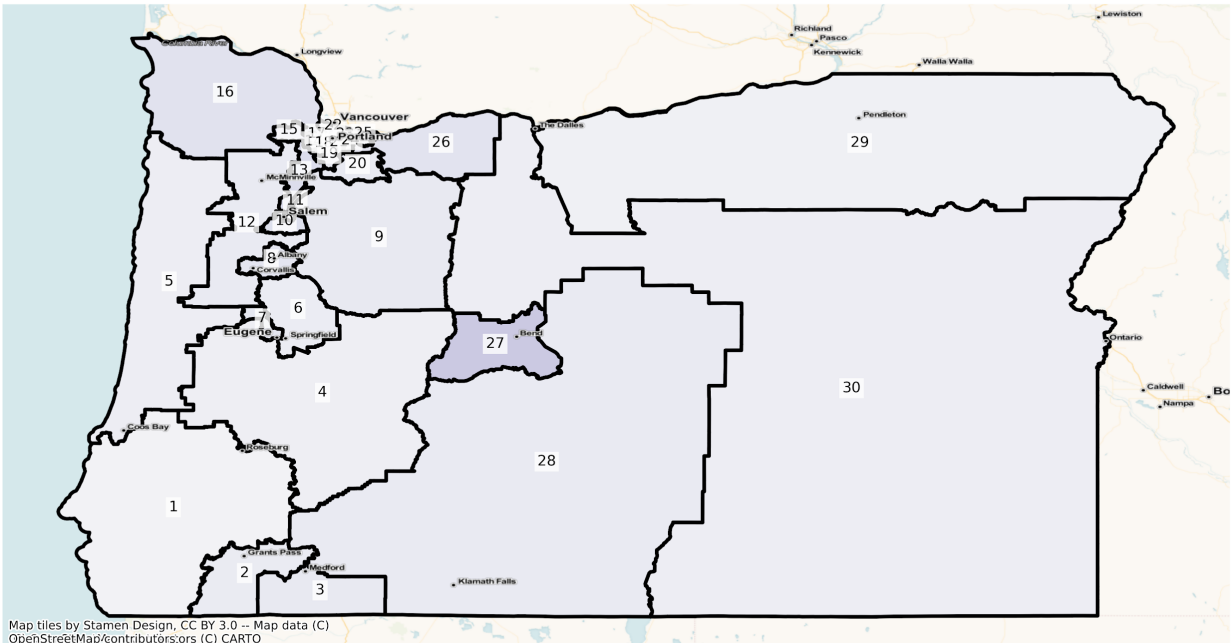
²Native Hawaiian and Pacific Islander Alone, Not Latino

State Senate

The charts below display the percent change in population from 2010 to 2020 for the listed group. Please note that the color bars are fixed to be from -100% to 100% and these maps are displayed in brown to purple. If the percent change in population was outside of this range, the color scheme changes to red to green to indicate a change.

Total Population

OR State Senate Districts
Population % Change from 2010 to 2020
Total Population



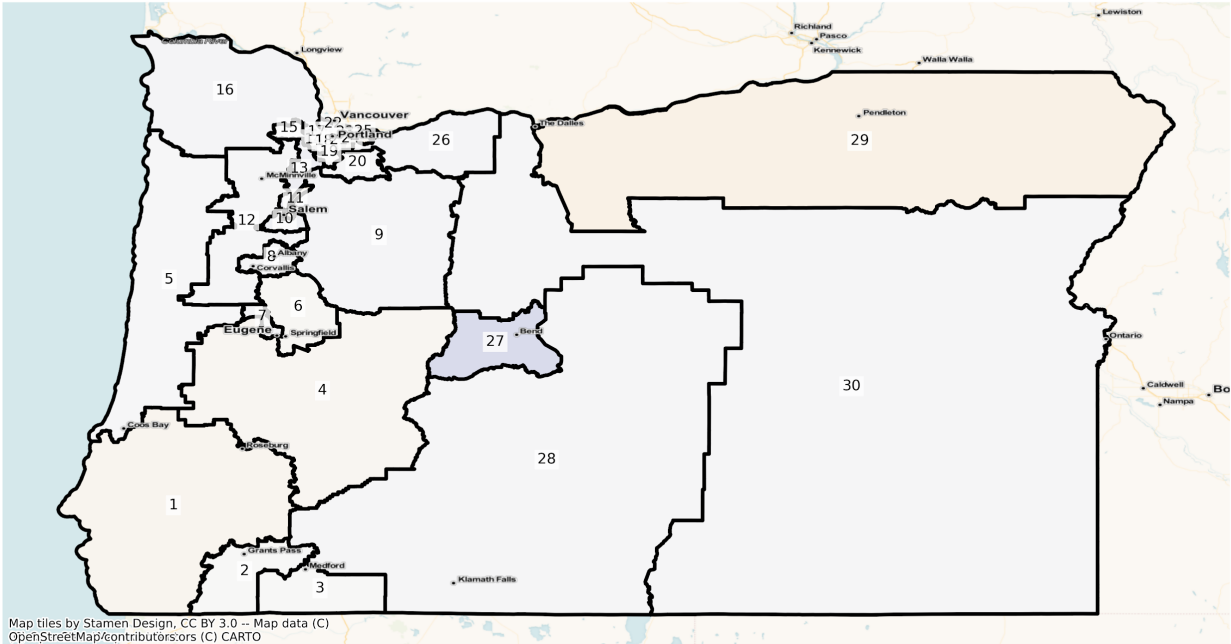
Total Population from 2010 to 2020 at State Senate District Level

DISTRICT	Total Population 2010	Total Population 2020	Total Population % Change
1	127,000	131,543	3.58%
2	129,154	139,628	8.11%
3	126,631	139,200	9.93%
4	127,054	134,623	5.96%
5	127,383	136,006	6.77%
6	126,226	135,603	7.43%
7	127,510	142,227	11.54%
8	126,833	141,720	11.74%
9	127,653	140,130	9.77%
10	128,519	149,462	16.30%

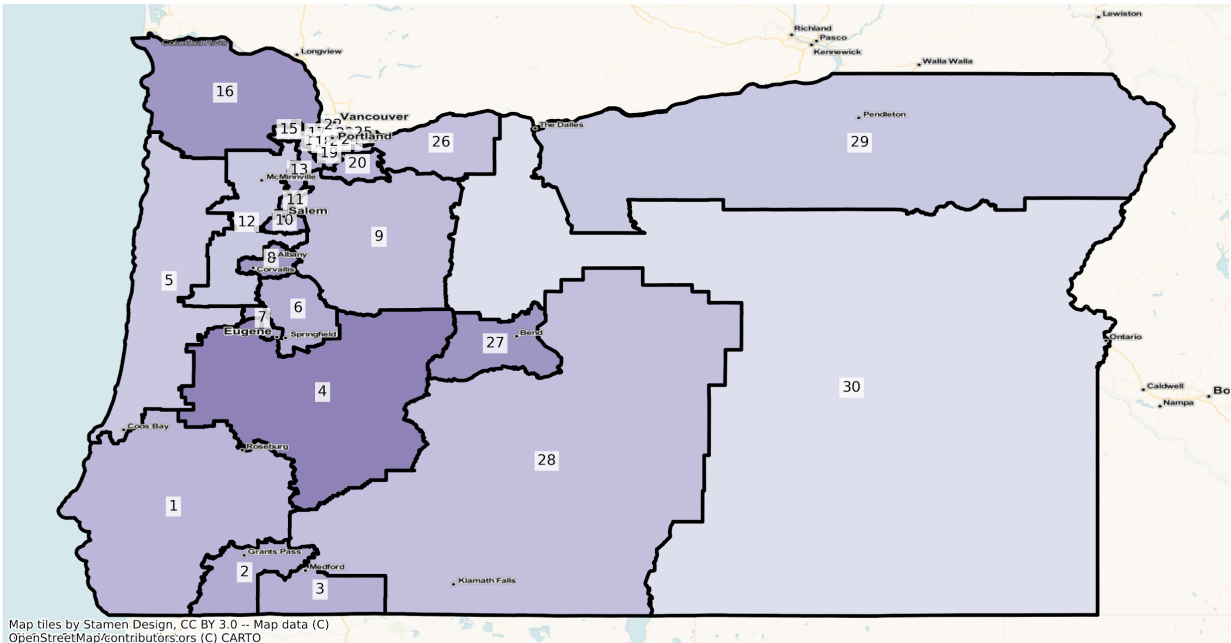
11	129,044	138,020	6.96%
12	127,491	138,821	8.89%
13	129,537	152,263	17.54%
14	129,323	137,202	6.09%
15	129,838	150,116	15.62%
16	128,511	146,690	14.15%
17	128,901	152,651	18.42%
18	129,107	144,257	11.73%
19	129,327	141,776	9.63%
20	128,248	141,081	10.01%
21	127,075	141,553	11.39%
22	128,234	143,585	11.97%
23	126,250	134,918	6.87%
24	125,490	135,871	8.27%
25	126,364	135,629	7.33%
26	127,431	145,201	13.94%
27	128,413	162,994	26.93%
28	126,668	138,044	8.98%
29	125,718	132,034	5.02%
30	126,135	134,395	6.55%

Population by Race and Ethnicity

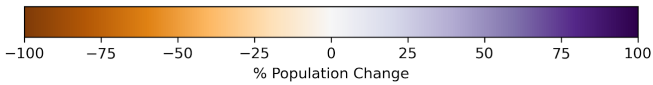
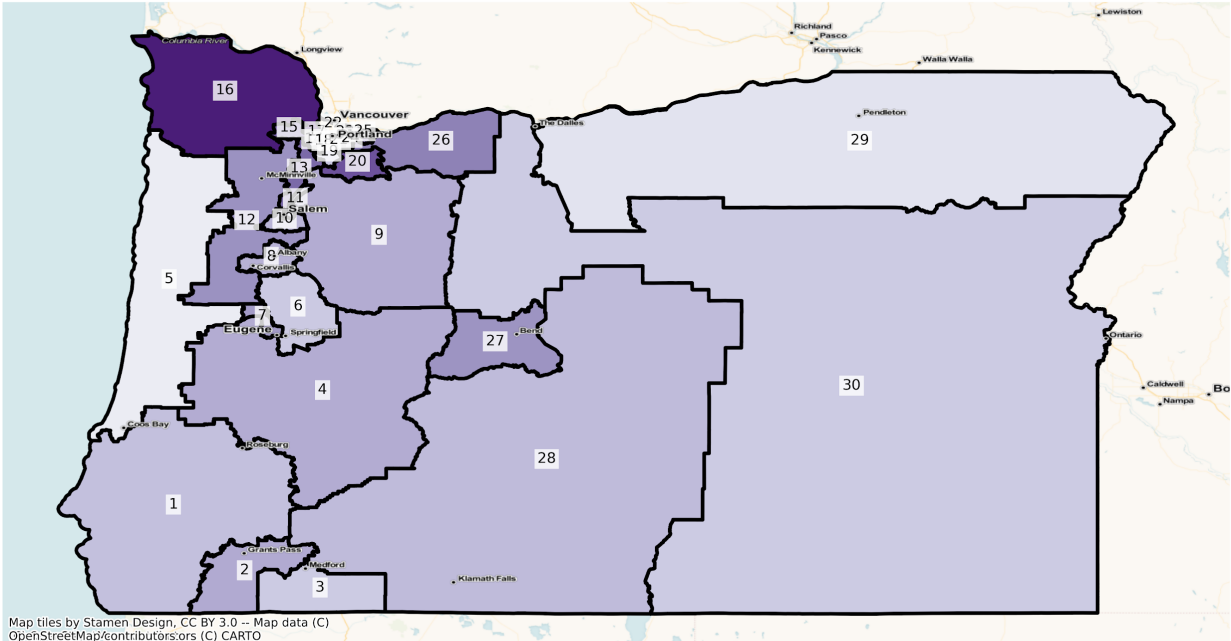
OR State Senate Districts
Population % Change from 2010 to 2020
Ethnicity: Not Latino White alone



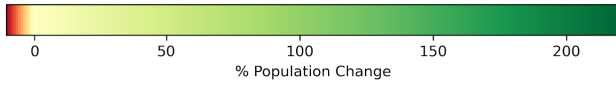
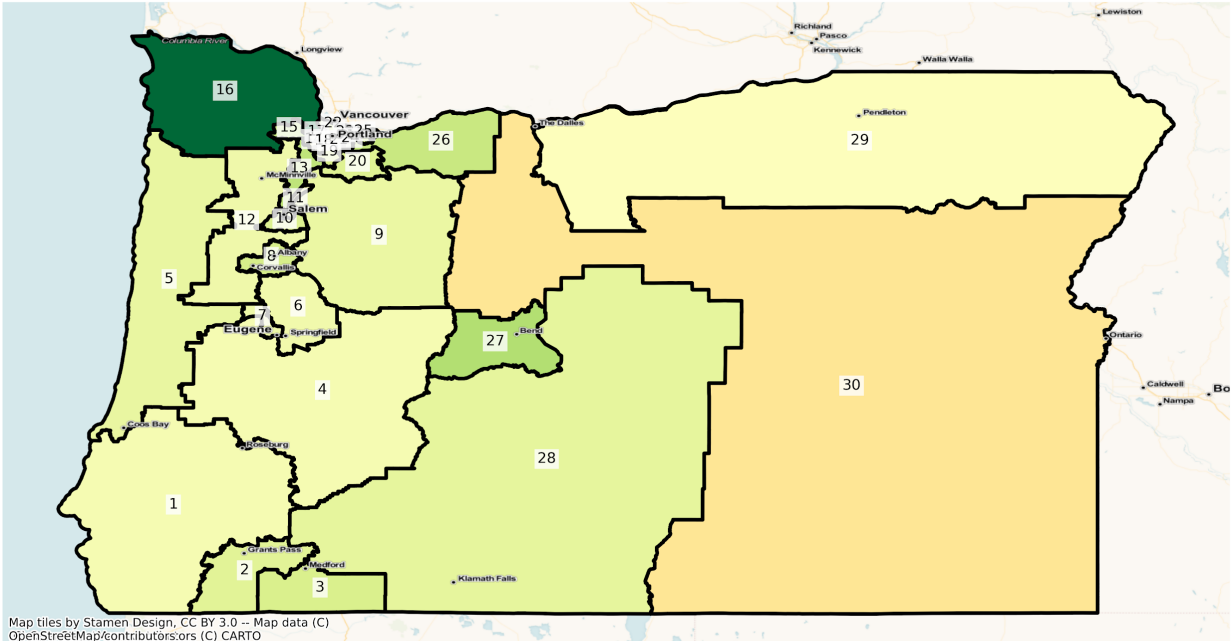
OR State Senate Districts
Population % Change from 2010 to 2020
Ethnicity: Hispanic or Latino



OR State Senate Districts
 Population % Change from 2010 to 2020
 Ethnicity: Not Latino African American alone

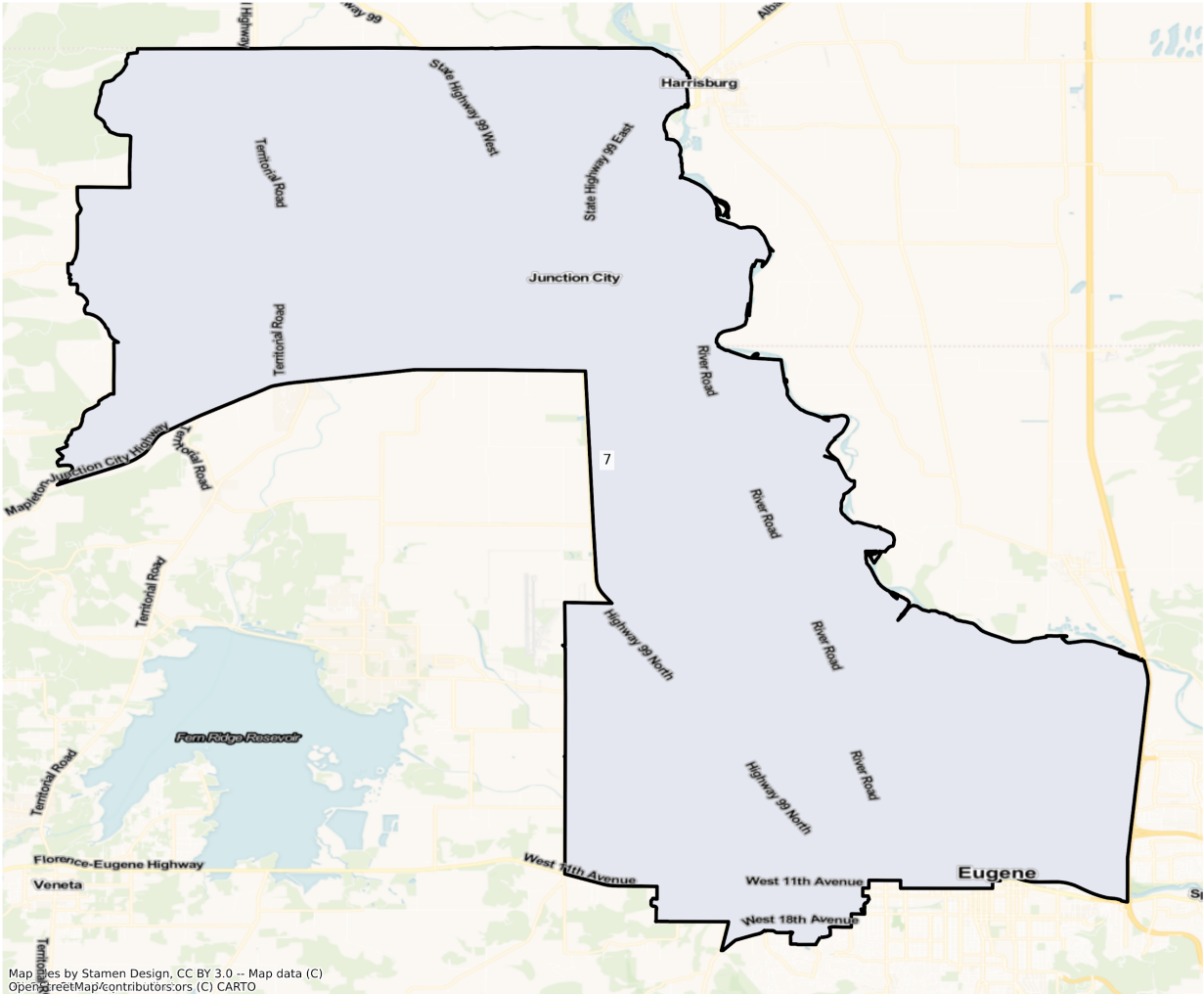


OR State Senate Districts
Population % Change from 2010 to 2020
Ethnicity: Not Latino Asian alone

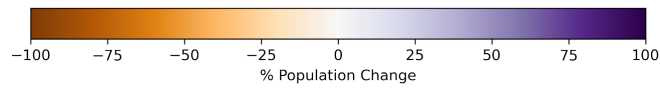


Eugene

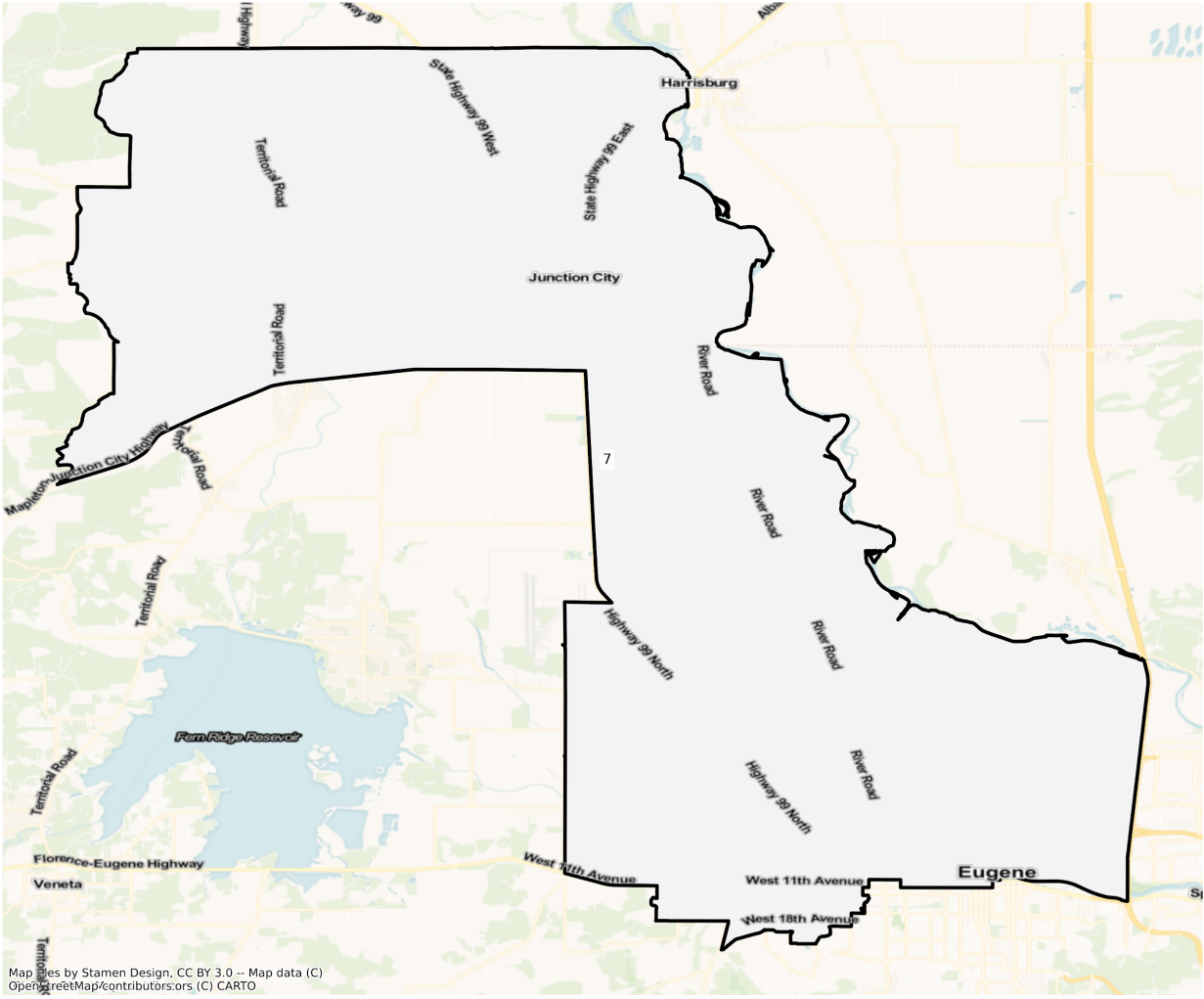
OR Eugene State Senate Districts
Population % Change from 2010 to 2020
Total Population



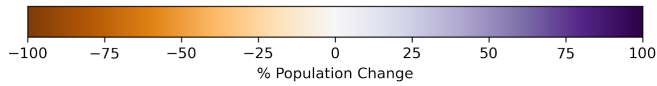
Map data by Stamen Design, CC BY 3.0 -- Map data (C)
OpenStreetMap/contributors/ors, (C) CARTO



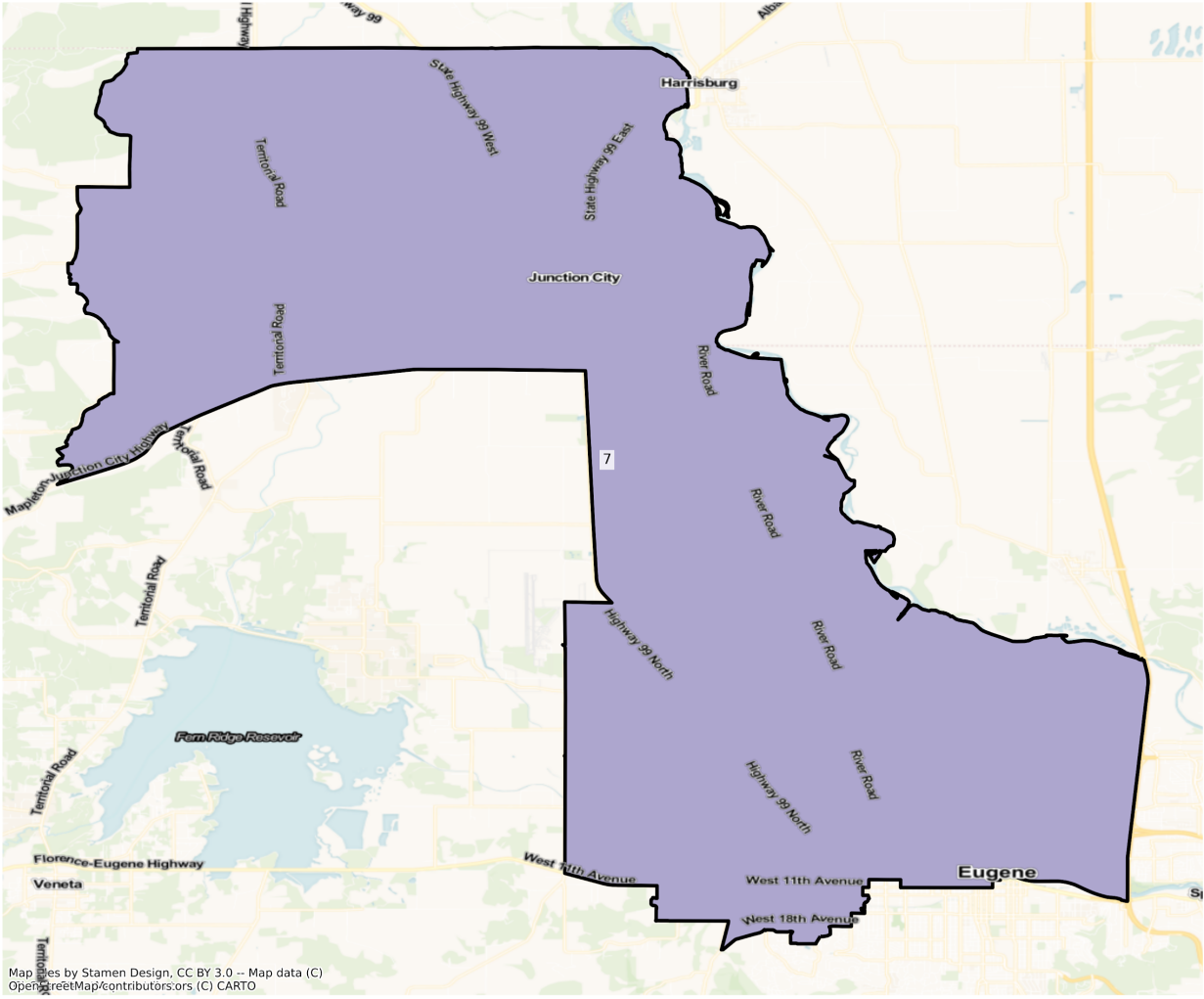
OR Eugene State Senate Districts
Population % Change from 2010 to 2020
Ethnicity: Not Latino White alone



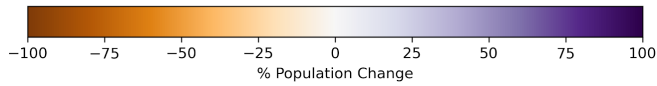
Map data by Stamen Design, CC BY 3.0 -- Map data (C)
OpenStreetMap/contributors/ors, (C) CARTO



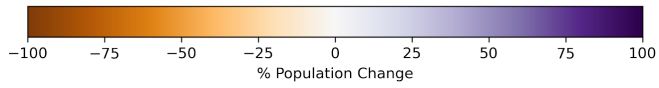
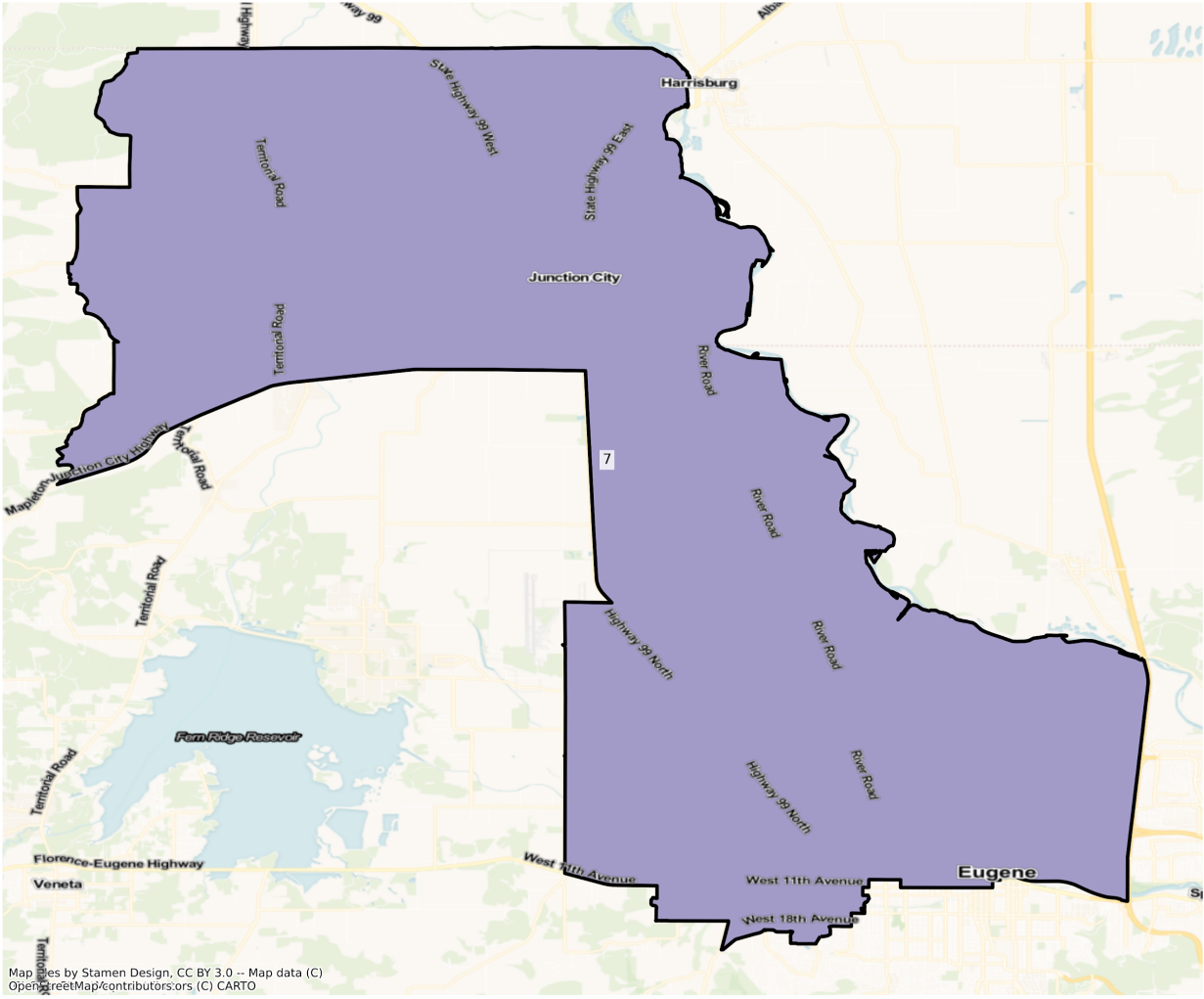
OR Eugene State Senate Districts
Population % Change from 2010 to 2020
Ethnicity: Hispanic or Latino



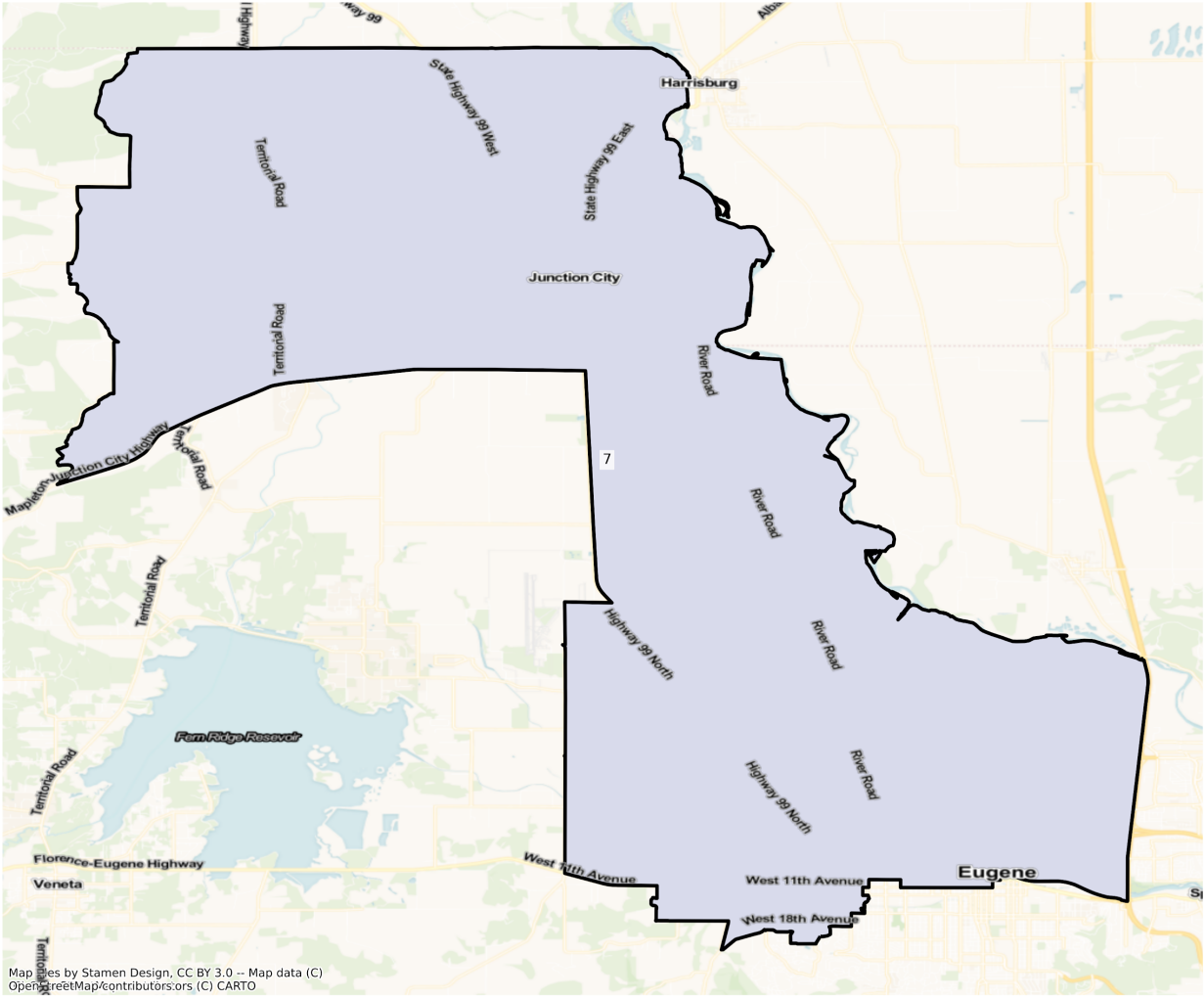
Map data by Stamen Design, CC BY 3.0 -- Map data (C)
OpenStreetMap/contributors/ors, (C) CARTO



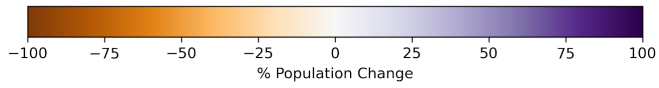
OR Eugene State Senate Districts
Population % Change from 2010 to 2020
Ethnicity: Not Latino African American alone



OR Eugene State Senate Districts
Population % Change from 2010 to 2020
Ethnicity: Not Latino Asian alone

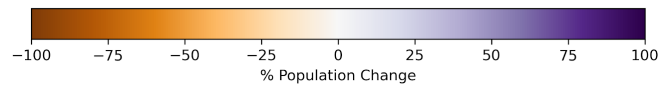
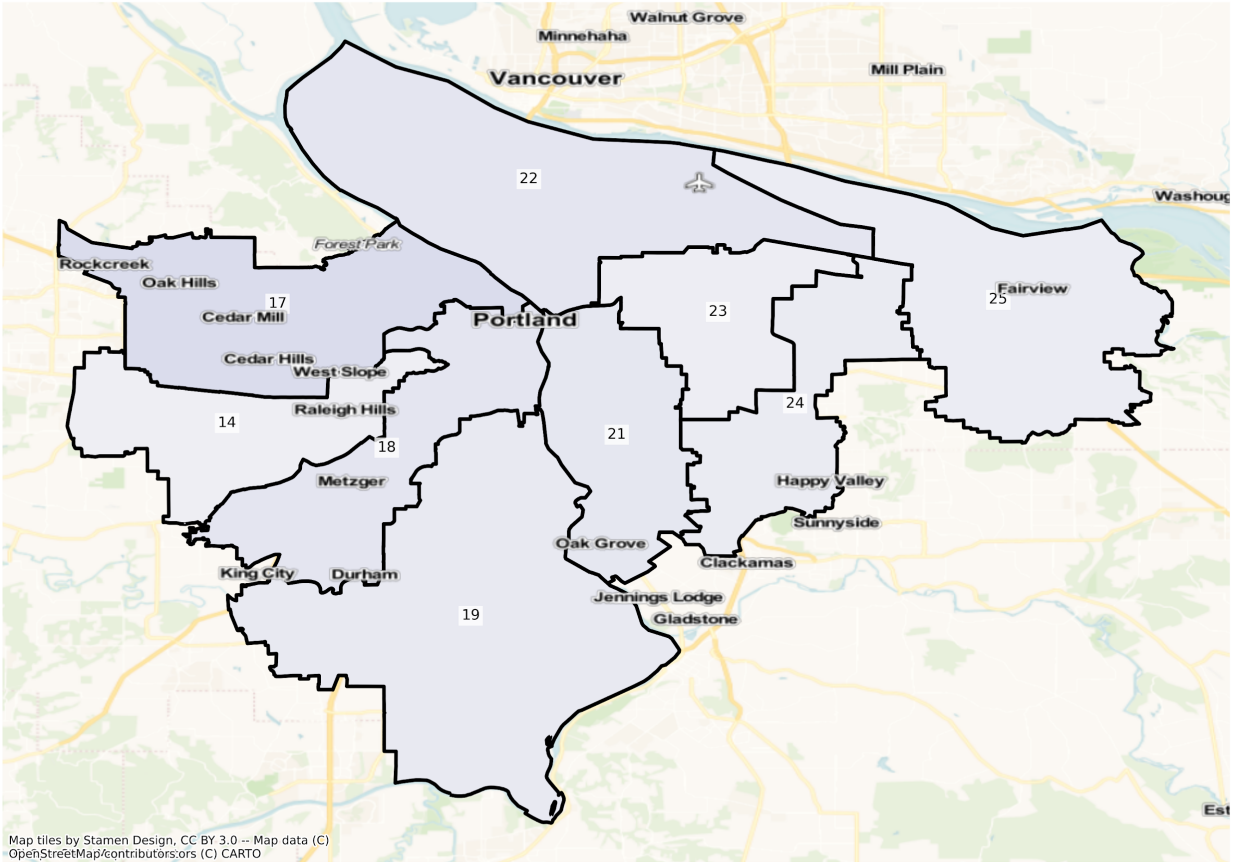


Map data by Stamen Design, CC BY 3.0 -- Map data (C)
OpenStreetMap/contributors, (C) CARTO

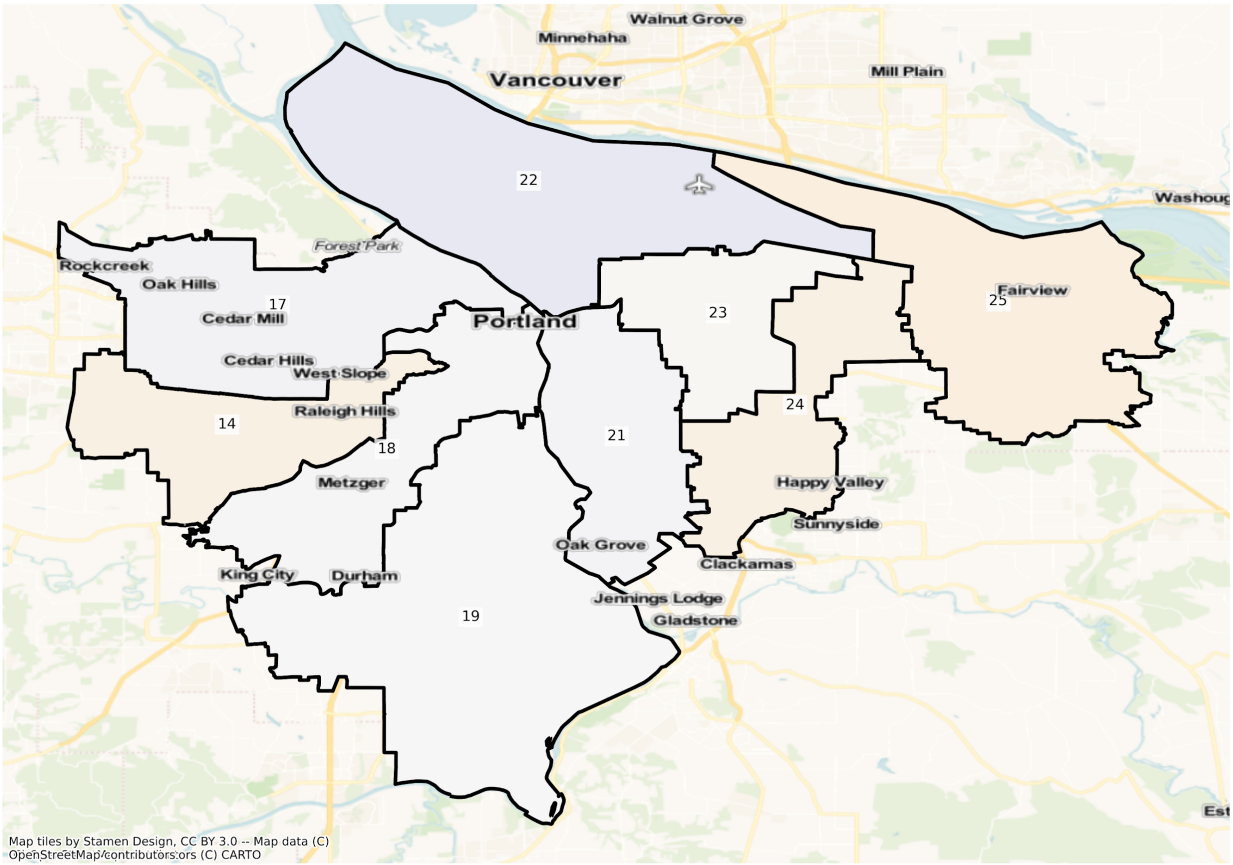


Portland

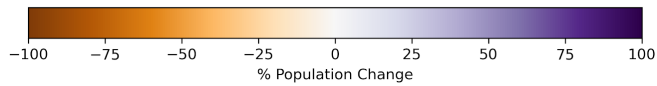
OR Portland State Senate Districts
Population % Change from 2010 to 2020
Total Population



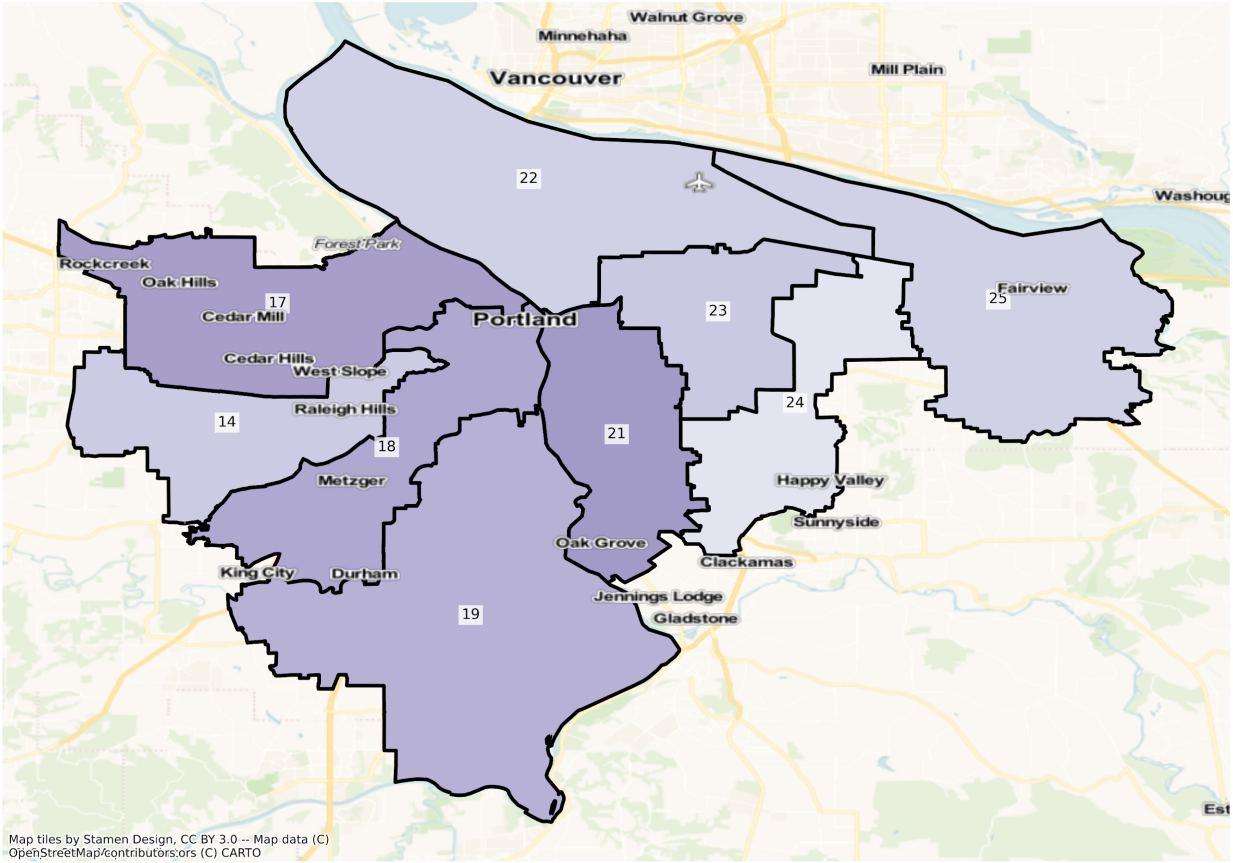
OR Portland State Senate Districts
Population % Change from 2010 to 2020
Ethnicity: Not Latino White alone



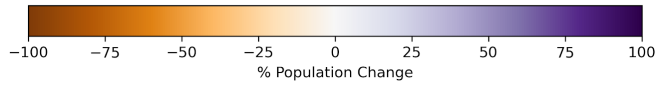
Map tiles by Stamen Design, CC BY 3.0 -- Map data (C) OpenStreetMap/contributors/ors (C) CARTO



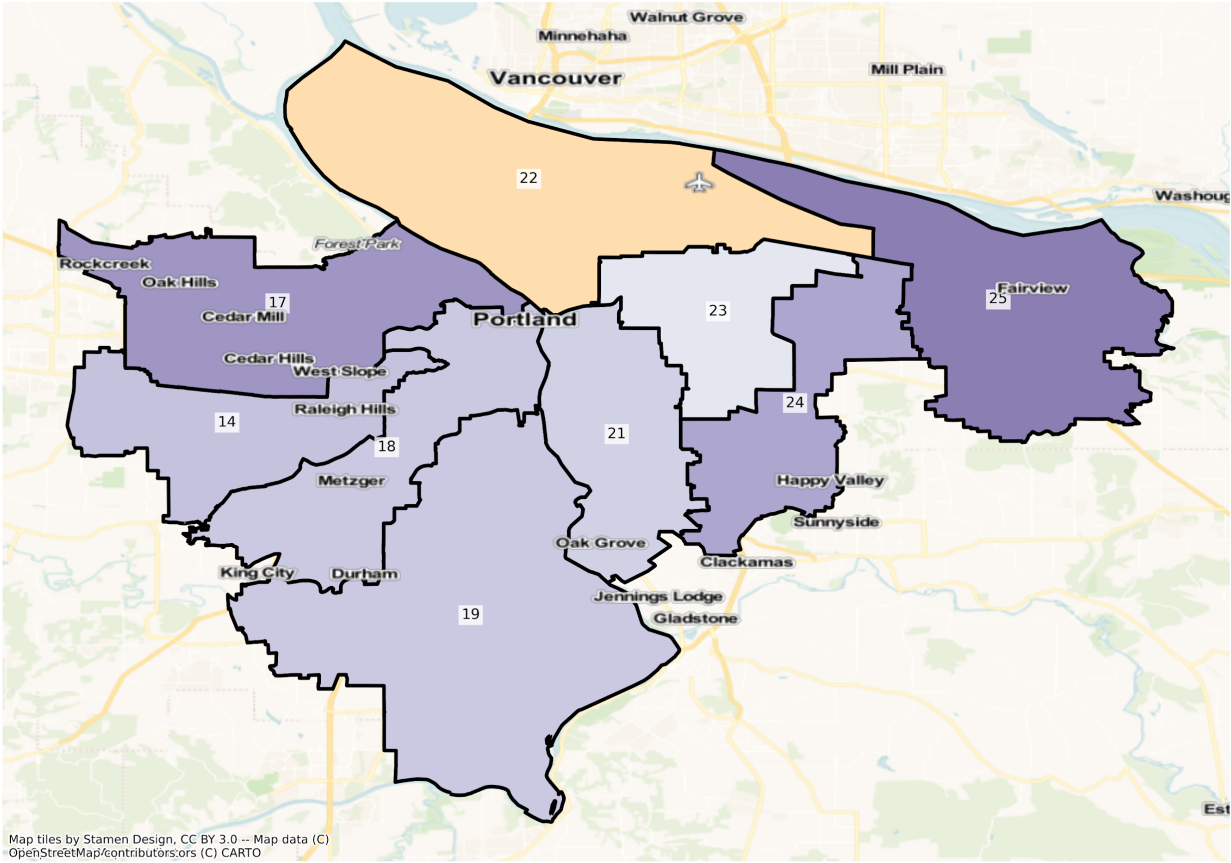
OR Portland State Senate Districts
Population % Change from 2010 to 2020
Ethnicity: Hispanic or Latino



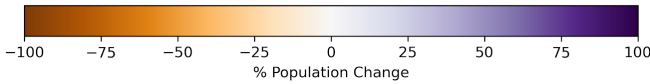
Map tiles by Stamen Design, CC BY 3.0 -- Map data (C) OpenStreetMap/contributors/ors (C) CARTO



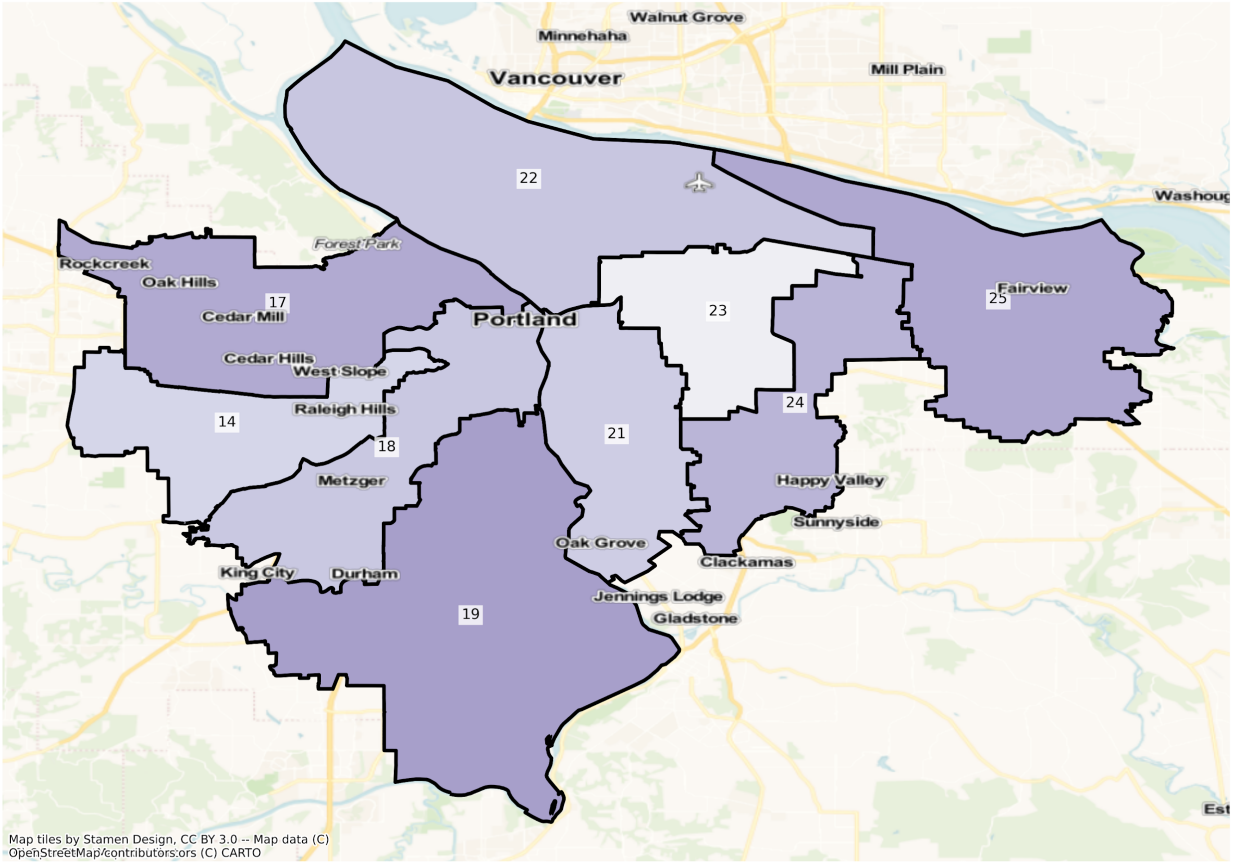
OR Portland State Senate Districts
Population % Change from 2010 to 2020
Ethnicity: Not Latino African American alone



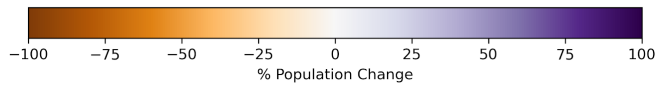
Map tiles by Stamen Design, CC BY 3.0 -- Map data (C) OpenStreetMap/contributors/ors (C) CARTO



OR Portland State Senate Districts
Population % Change from 2010 to 2020
Ethnicity: Not Latino Asian alone

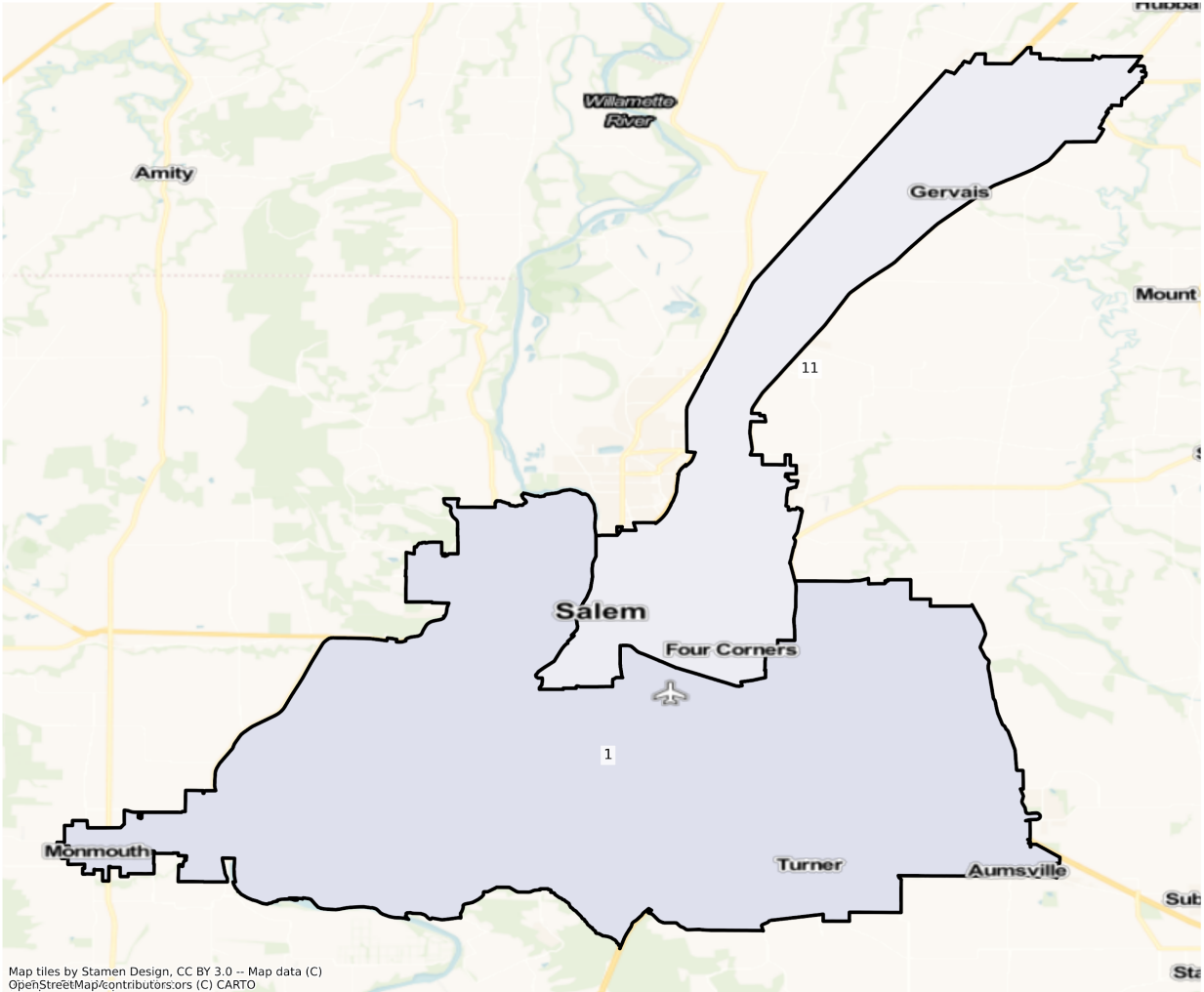


Map tiles by Stamen Design, CC BY 3.0 -- Map data (C) OpenStreetMap/contributors/ors (C) CARTO

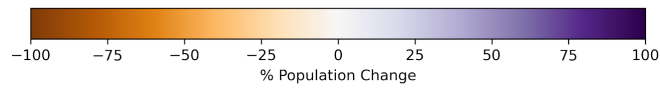


Salem

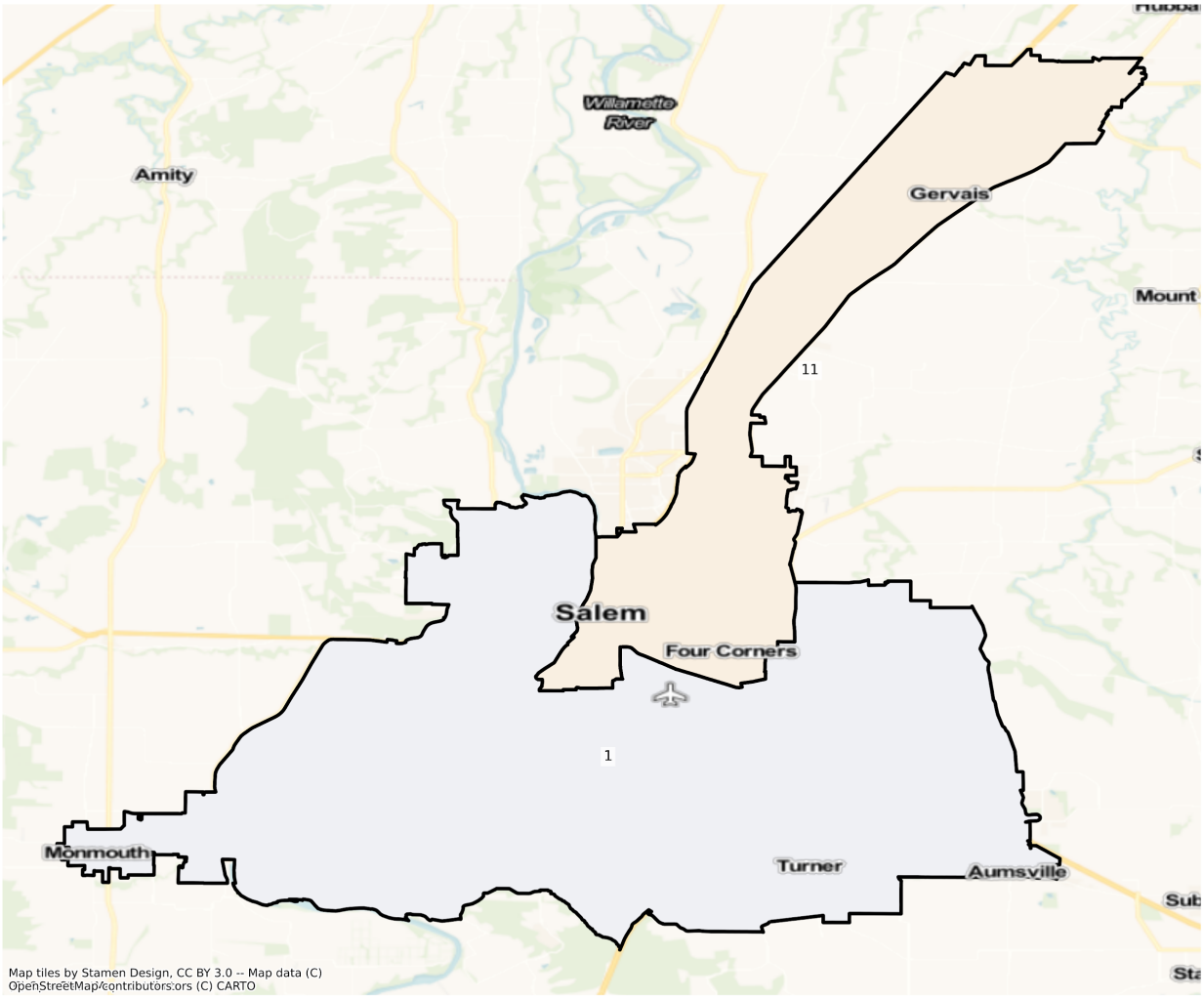
OR Salem State Senate Districts
Population % Change from 2010 to 2020
Total Population



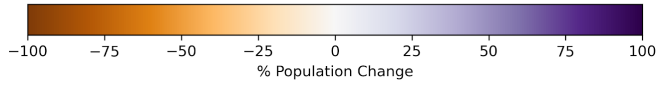
Map tiles by Stamen Design, CC BY 3.0 -- Map data (C) OpenStreetMap/contributors,ors (C) CARTO



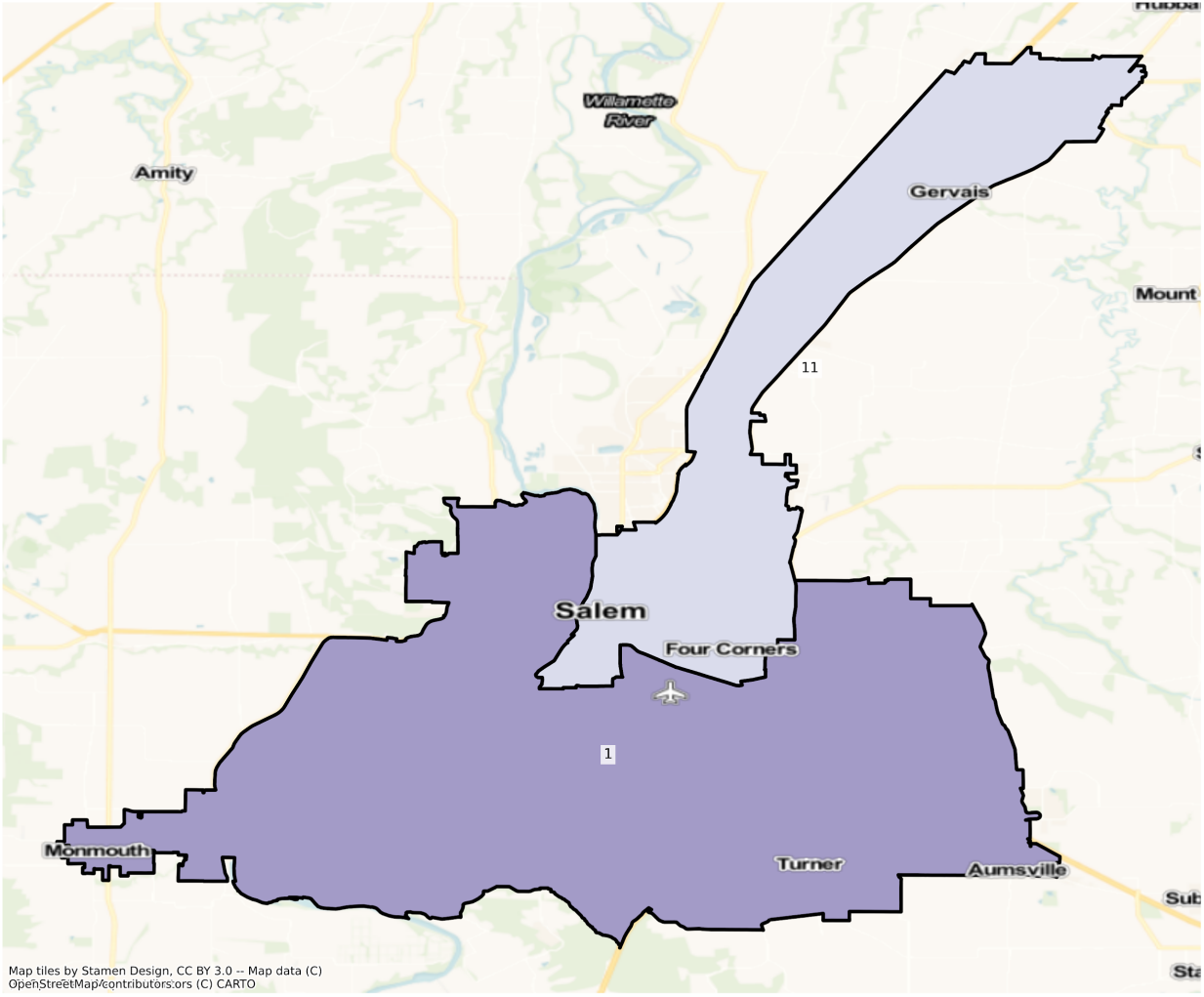
OR Salem State Senate Districts
Population % Change from 2010 to 2020
Ethnicity: Not Latino White alone



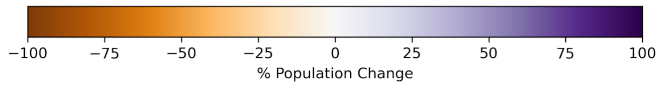
Map tiles by Stamen Design, CC BY 3.0 -- Map data (C) OpenStreetMap/contributors.ors (C) CARTO



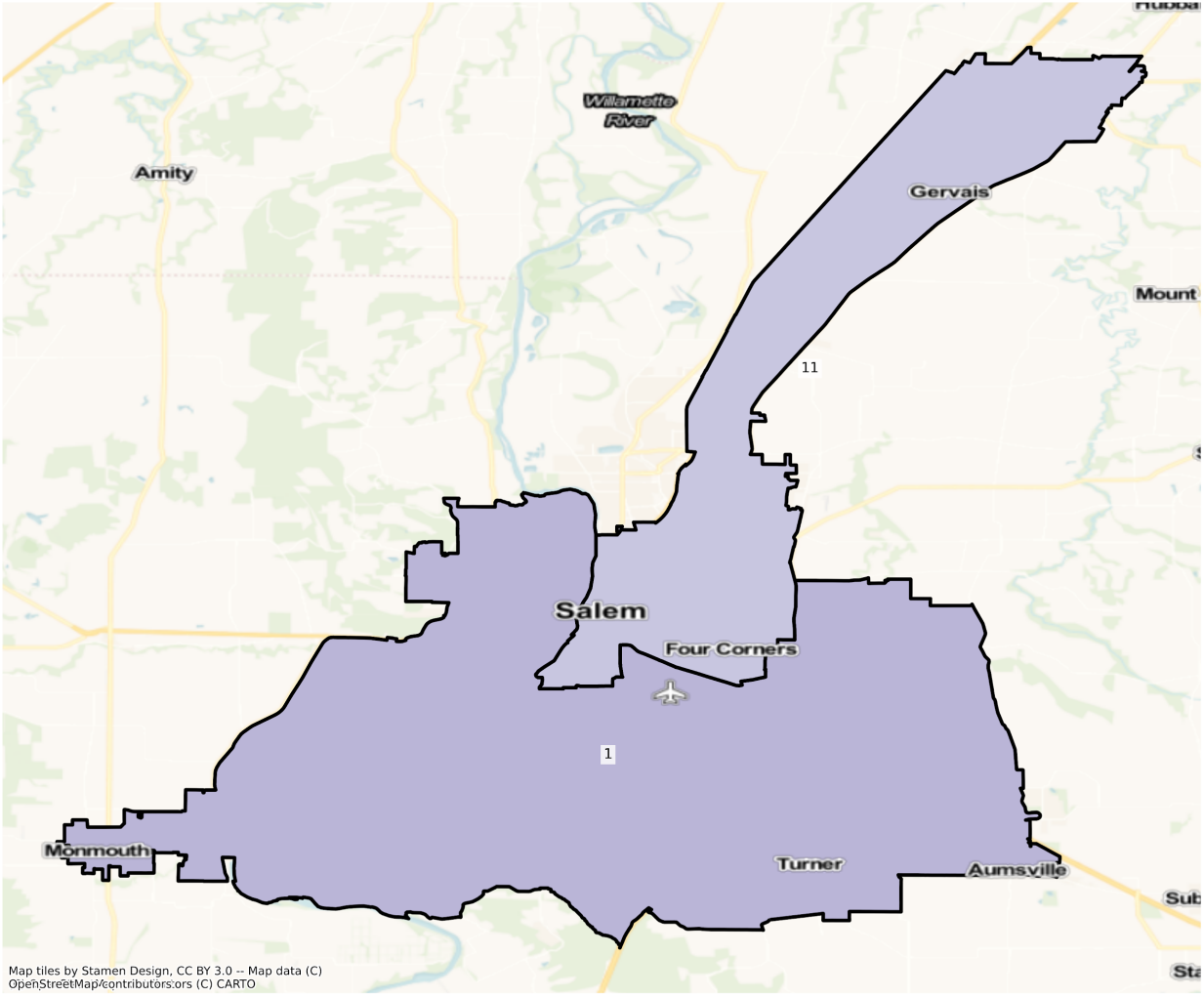
OR Salem State Senate Districts
Population % Change from 2010 to 2020
Ethnicity: Hispanic or Latino



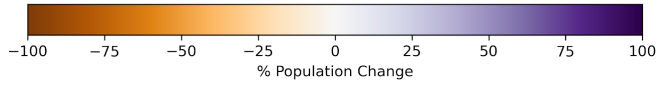
Map tiles by Stamen Design, CC BY 3.0 -- Map data (C) OpenStreetMap/contributors.ors (C) CARTO



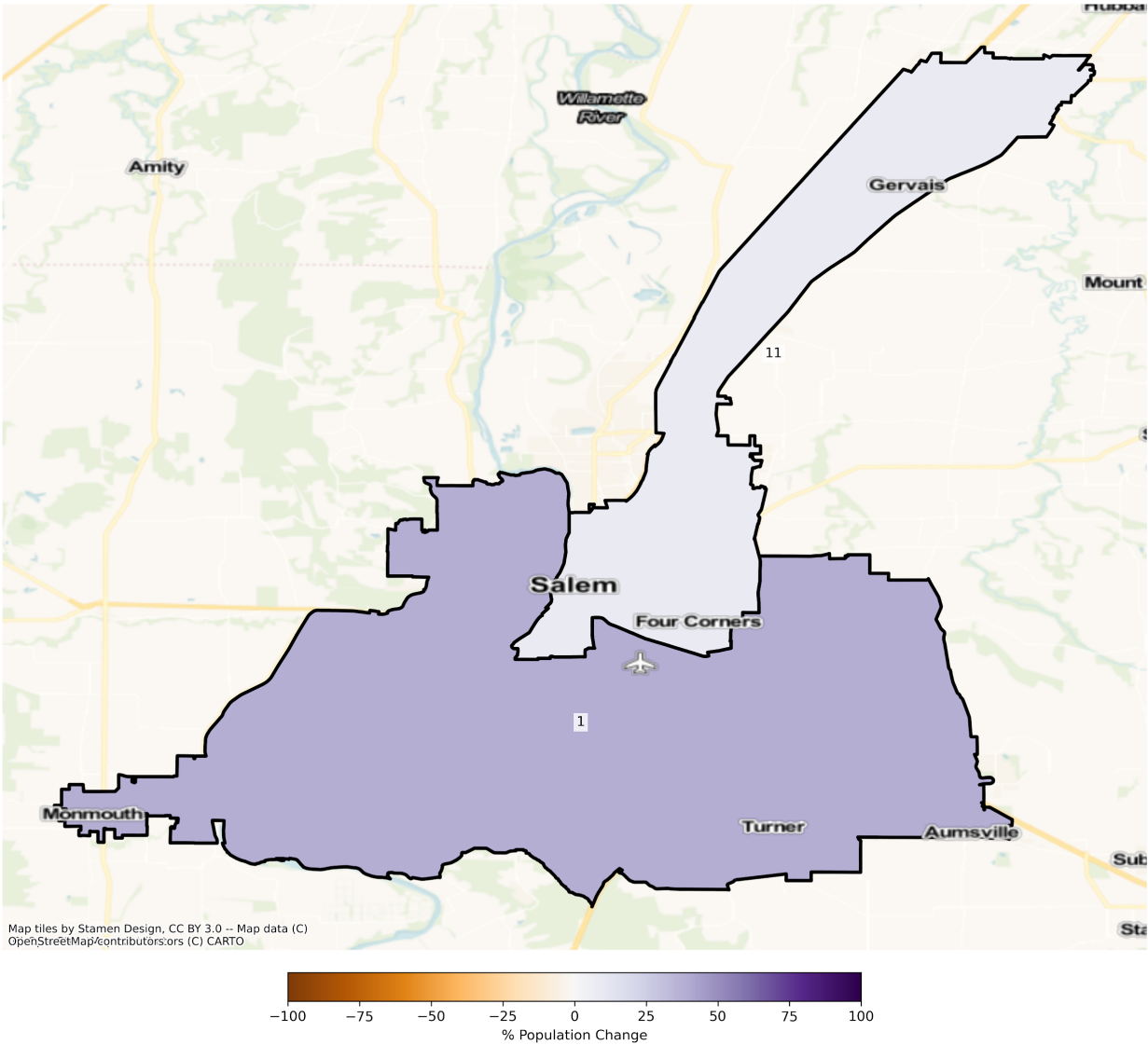
OR Salem State Senate Districts
Population % Change from 2010 to 2020
Ethnicity: Not Latino African American alone



Map tiles by Stamen Design, CC BY 3.0 -- Map data (C) OpenStreetMap/contributors,ors (C) CARTO



OR Salem State Senate Districts
 Population % Change from 2010 to 2020
 Ethnicity: Not Latino Asian alone



2010 Population by Race and Ethnicity at State Senate District Level

DISTRICT	Total Population	Hispanic or Latino Origin	White Alone, not Latino	African American Alone, not Latino	AIAN Alone, not Latino ¹	Asian Alone, not Latino	NHPI Alone, not Latino ²	Other Alone, not Latino	Two or More, not Latino
1	127,000	5,893	113,428	342	2,228	1,137	129	140	3,703

2	129,154	10,509	112,335	484	1,379	1,028	192	114	3,113
3	126,631	14,775	104,006	938	1,105	1,747	420	168	3,472
4	127,054	6,017	112,234	738	1,393	2,319	139	233	3,981
5	127,383	8,829	108,354	757	3,611	1,403	225	117	4,087
6	126,226	10,434	106,324	997	1,263	2,647	282	163	4,116
7	127,510	11,277	105,317	1,452	1,228	3,331	314	191	4,400
8	126,833	10,878	105,094	943	920	4,884	275	198	3,641
9	127,653	12,876	109,167	382	1,243	1,093	178	110	2,604
10	128,519	17,140	101,202	1,308	1,326	3,002	760	171	3,610
11	129,044	50,305	68,651	1,487	1,429	2,728	1,342	190	2,912
12	127,491	15,804	104,402	535	1,541	1,846	211	180	2,972
13	129,537	16,773	102,116	1,120	834	4,624	483	169	3,418
14	129,323	20,267	90,055	2,717	603	10,337	551	281	4,512
15	129,838	31,478	81,901	1,992	733	9,191	427	208	3,908
16	128,511	8,058	112,392	580	1,223	2,592	268	140	3,258
17	128,901	12,948	89,875	2,336	479	18,266	340	268	4,389
18	129,107	10,439	102,166	2,806	754	7,751	634	226	4,331
19	129,327	9,187	108,217	1,522	520	5,506	456	223	3,696
20	128,248	10,763	110,602	645	917	2,112	214	132	2,863
21	127,075	7,904	106,894	1,965	850	4,875	254	246	4,087
22	128,234	15,369	82,592	17,822	1,159	4,436	882	363	5,611
23	126,250	10,457	91,054	5,938	953	12,237	774	248	4,589
24	125,490	18,937	80,942	6,654	1,028	12,559	833	211	4,326
25	126,364	23,664	86,966	4,037	971	5,672	805	181	4,068
26	127,431	15,286	97,031	2,075	847	7,928	443	169	3,652
27	128,413	10,582	112,333	474	952	1,253	153	127	2,539
28	126,668	10,607	107,789	537	3,151	950	149	104	3,381
29	125,718	23,191	95,152	754	2,929	966	352	133	2,241
30	126,135	19,415	97,251	647	5,137	1,016	212	98	2,359

¹American Indian and Alaska Native Alone, Not Latino

²Native Hawaiian and Pacific Islander Alone, Not Latino

2020 Population by Race and Ethnicity at State Senate District Level

DISTRICT	Total Population	Hispanic or Latino Origin	White Alone, not Latino	African American Alone, not Latino	AIAN Alone, not Latino ¹	Asian Alone, not Latino	NHPI Alone, not Latino ²	Other Alone, not Latino	Two or More, not Latino
1	131,543	7,928	110,732	448	2,125	1,270	155	613	8,272
2	139,628	14,634	111,862	680	1,365	1,378	277	759	8,673
3	139,200	20,273	103,981	1,182	1,015	2,471	612	991	8,675
4	134,623	9,283	110,071	1,032	1,303	2,574	178	861	9,321
5	136,006	11,182	108,696	811	3,841	1,748	246	744	8,738
6	135,603	14,443	105,350	1,267	1,259	3,058	375	784	9,067
7	142,227	15,980	107,824	2,121	1,219	4,001	429	861	9,792
8	141,720	15,937	106,563	1,292	1,016	7,097	417	785	8,613
9	140,130	17,028	111,465	534	1,200	1,353	232	745	7,573
10	149,462	24,933	106,472	1,778	1,401	4,172	1,135	742	8,829
11	138,020	59,396	63,879	1,912	1,258	2,954	2,343	604	5,674
12	138,821	20,214	105,307	796	1,480	2,192	256	790	7,786
13	152,263	23,272	108,115	1,817	976	7,668	783	691	8,941
14	137,202	25,583	84,437	3,529	499	12,527	740	726	9,161
15	150,116	39,611	81,539	3,284	658	15,015	690	778	8,541
16	146,690	11,892	114,239	1,073	1,291	8,295	344	817	8,739
17	152,651	18,671	92,869	3,436	550	25,605	546	876	10,098
18	144,257	14,706	103,603	3,572	898	9,919	764	929	9,866
19	141,776	12,617	108,230	1,932	423	7,921	594	733	9,326
20	141,081	14,734	112,201	1,086	863	2,897	270	757	8,273
21	141,553	11,503	109,446	2,434	652	6,126	317	928	10,147
22	143,585	19,064	91,428	13,998	967	5,712	928	963	10,525
23	134,918	13,287	90,230	6,609	817	12,913	698	827	9,537
24	135,871	21,412	76,412	9,433	1,188	16,980	1,478	704	8,264
25	135,629	29,279	80,664	6,304	1,029	8,008	1,432	651	8,262
26	145,201	20,029	99,061	3,208	846	12,529	626	586	8,316
27	162,994	15,557	133,804	702	877	2,207	216	836	8,795

28	138,044	13,914	109,210	714	3,203	1,222	187	802	8,792
29	132,034	29,669	90,225	857	3,073	985	639	539	6,047
30	134,395	22,725	98,232	817	4,750	1,000	290	540	6,041

¹American Indian and Alaska Native Alone, Not Latino

²Native Hawaiian and Pacific Islander Alone, Not Latino

Percent Change in Population from 2010 to 2020 by Race and Ethnicity at State Senate District Level

DISTRICT	Total Population	Hispanic or Latino Origin	White Alone, not Latino	African American Alone, not Latino	AIAN Alone, not Latino ¹	Asian Alone, not Latino	NHPI Alone, not Latino ²	Other Alone, not Latino	Two or More, not Latino
1	3.58%	34.53%	-2.38%	30.99%	-4.62%	11.70%	20.16%	337.86%	123.39%
2	8.11%	39.25%	-0.42%	40.50%	-1.02%	34.05%	44.27%	565.79%	178.61%
3	9.93%	37.21%	-0.02%	26.01%	-8.14%	41.44%	45.71%	489.88%	149.86%
4	5.96%	54.28%	-1.93%	39.84%	-6.46%	11.00%	28.06%	269.53%	134.14%
5	6.77%	26.65%	0.32%	7.13%	6.37%	24.59%	9.33%	535.90%	113.80%
6	7.43%	38.42%	-0.92%	27.08%	-0.32%	15.53%	32.98%	380.98%	120.29%
7	11.54%	41.70%	2.38%	46.07%	-0.73%	20.11%	36.62%	350.79%	122.55%
8	11.74%	46.51%	1.40%	37.01%	10.43%	45.31%	51.64%	296.46%	136.56%
9	9.77%	32.25%	2.11%	39.79%	-3.46%	23.79%	30.34%	577.27%	190.82%
10	16.30%	45.47%	5.21%	35.93%	5.66%	38.97%	49.34%	333.92%	144.57%
11	6.96%	18.07%	-6.95%	28.58%	-11.97%	8.28%	74.59%	217.89%	94.85%
12	8.89%	27.90%	0.87%	48.79%	-3.96%	18.74%	21.33%	338.89%	161.98%
13	17.54%	38.75%	5.87%	62.23%	17.03%	65.83%	62.11%	308.88%	161.59%
14	6.09%	26.23%	-6.24%	29.89%	-17.25%	21.19%	34.30%	158.36%	103.04%
15	15.62%	25.84%	-0.44%	64.86%	-10.23%	63.37%	61.59%	274.04%	118.55%
16	14.15%	47.58%	1.64%	85.00%	5.56%	220.02%	28.36%	483.57%	168.23%
17	18.42%	44.20%	3.33%	47.09%	14.82%	40.18%	60.59%	226.87%	130.08%
18	11.73%	40.88%	1.41%	27.30%	19.10%	27.97%	20.50%	311.06%	127.80%
19	9.63%	37.34%	0.01%	26.94%	-18.65%	43.86%	30.26%	228.70%	152.33%
20	10.01%	36.89%	1.45%	68.37%	-5.89%	37.17%	26.17%	473.48%	188.96%
21	11.39%	45.53%	2.39%	23.87%	-23.29%	25.66%	24.80%	277.24%	148.28%

22	11.97%	24.04%	10.70%	-21.46%	-16.57%	28.76%	5.22%	165.29%	87.58%
23	6.87%	27.06%	-0.90%	11.30%	-14.27%	5.52%	-9.82%	233.47%	107.82%
24	8.27%	13.07%	-5.60%	41.76%	15.56%	35.20%	77.43%	233.65%	91.03%
25	7.33%	23.73%	-7.25%	56.16%	5.97%	41.18%	77.89%	259.67%	103.10%
26	13.94%	31.03%	2.09%	54.60%	-0.12%	58.03%	41.31%	246.75%	127.71%
27	26.93%	47.01%	19.11%	48.10%	-7.88%	76.14%	41.18%	558.27%	246.40%
28	8.98%	31.18%	1.32%	32.96%	1.65%	28.63%	25.50%	671.15%	160.04%
29	5.02%	27.93%	-5.18%	13.66%	4.92%	1.97%	81.53%	305.26%	169.83%
30	6.55%	17.05%	1.01%	26.28%	-7.53%	-1.57%	36.79%	451.02%	156.08%

¹American Indian and Alaska Native Alone, Not Latino

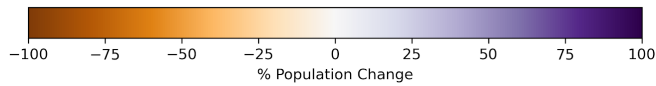
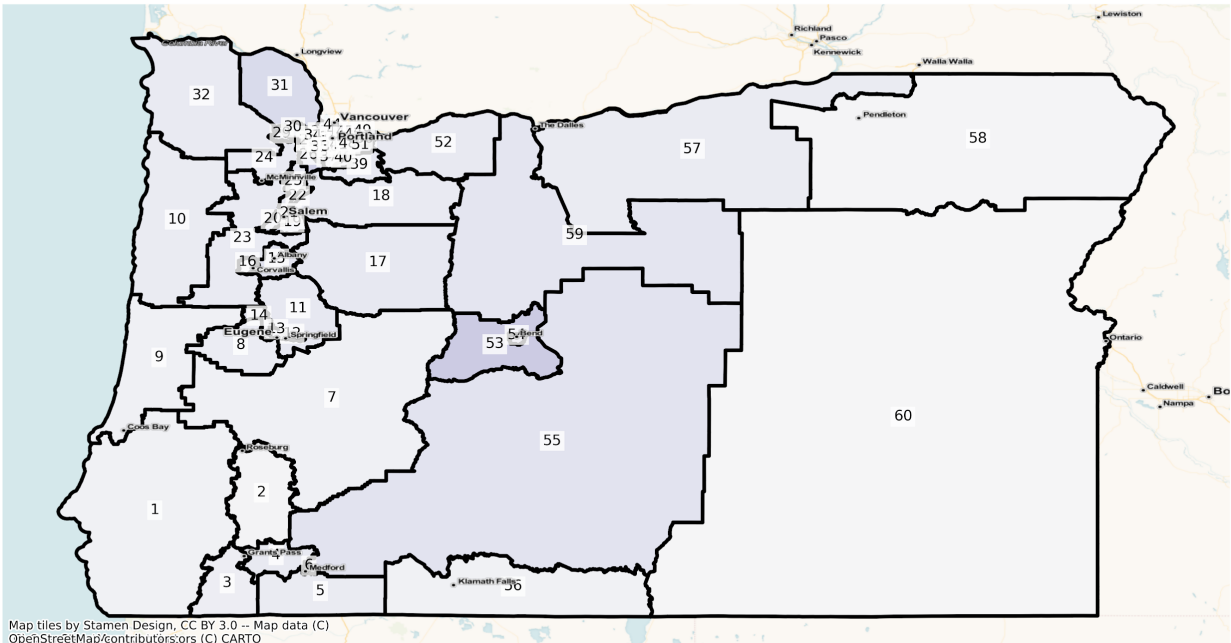
²Native Hawaiian and Pacific Islander Alone, Not Latino

State House

The charts below display the percent change in population from 2010 to 2020 for the listed group. Please note that the color bars are fixed to be from -100% to 100% and these maps are displayed in brown to purple. If the percent change in population was outside of this range, the color scheme changes to red to green to indicate a change.

Total Population

OR State House Districts
Population % Change from 2010 to 2020
Total Population



Total Population from 2010 to 2020 at State House District Level

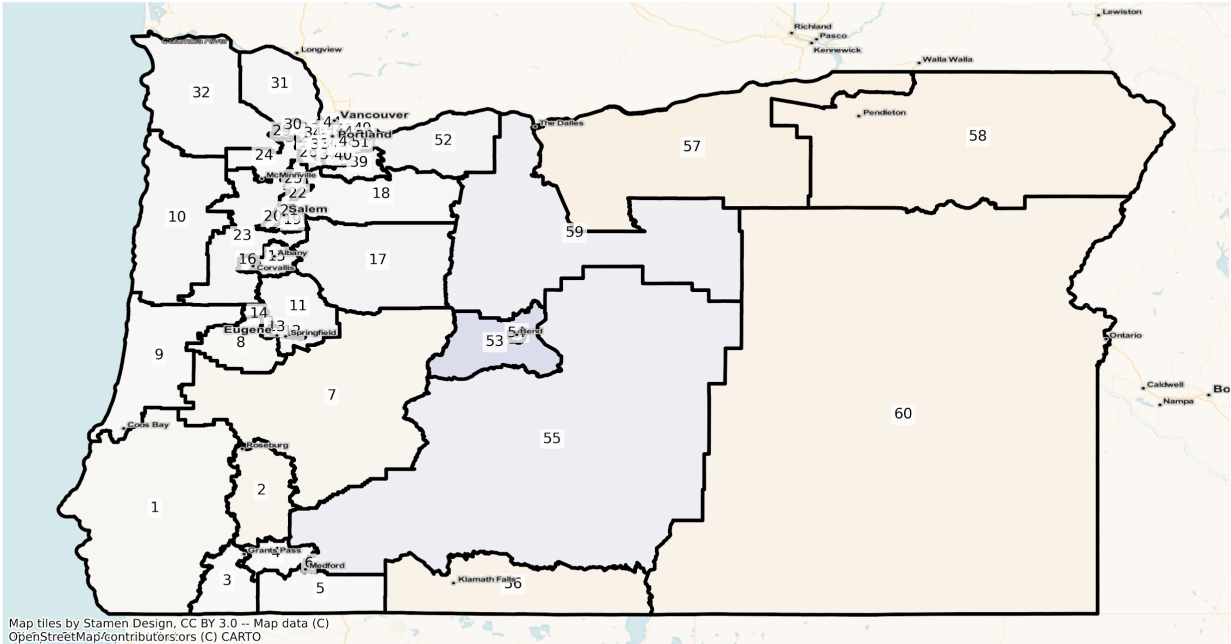
DISTRICT	Total Population 2010	Total Population 2020	Total Population % Change
1	64,187	67,160	4.63%
2	62,813	64,383	2.50%
3	64,919	69,275	6.71%
4	64,235	70,353	9.52%
5	62,923	68,317	8.57%
6	63,708	70,883	11.26%
7	64,097	67,115	4.71%
8	62,957	67,508	7.23%
9	63,232	66,424	5.05%
10	64,151	69,582	8.47%

11	63,248	69,918	10.55%
12	62,978	65,685	4.30%
13	63,425	69,847	10.13%
14	64,085	72,380	12.94%
15	63,360	71,816	13.35%
16	63,473	69,904	10.13%
17	64,217	70,957	10.50%
18	63,436	69,173	9.04%
19	63,844	74,847	17.23%
20	64,675	74,615	15.37%
21	64,647	69,454	7.44%
22	64,397	68,566	6.47%
23	63,587	69,116	8.70%
24	63,904	69,705	9.08%
25	64,850	71,577	10.37%
26	64,687	80,686	24.73%
27	64,811	67,894	4.76%
28	64,512	69,308	7.43%
29	65,134	70,371	8.04%
30	64,704	79,745	23.25%
31	64,104	76,396	19.18%
32	64,407	70,294	9.14%
33	64,251	81,133	26.28%
34	64,650	71,518	10.62%
35	64,796	70,810	9.28%
36	64,311	73,447	14.21%
37	64,758	71,144	9.86%
38	64,569	70,632	9.39%
39	63,724	70,673	10.90%
40	64,524	70,408	9.12%
41	63,971	68,569	7.19%

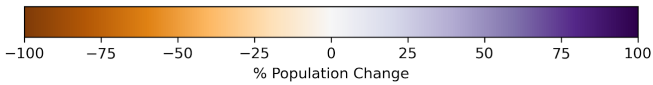
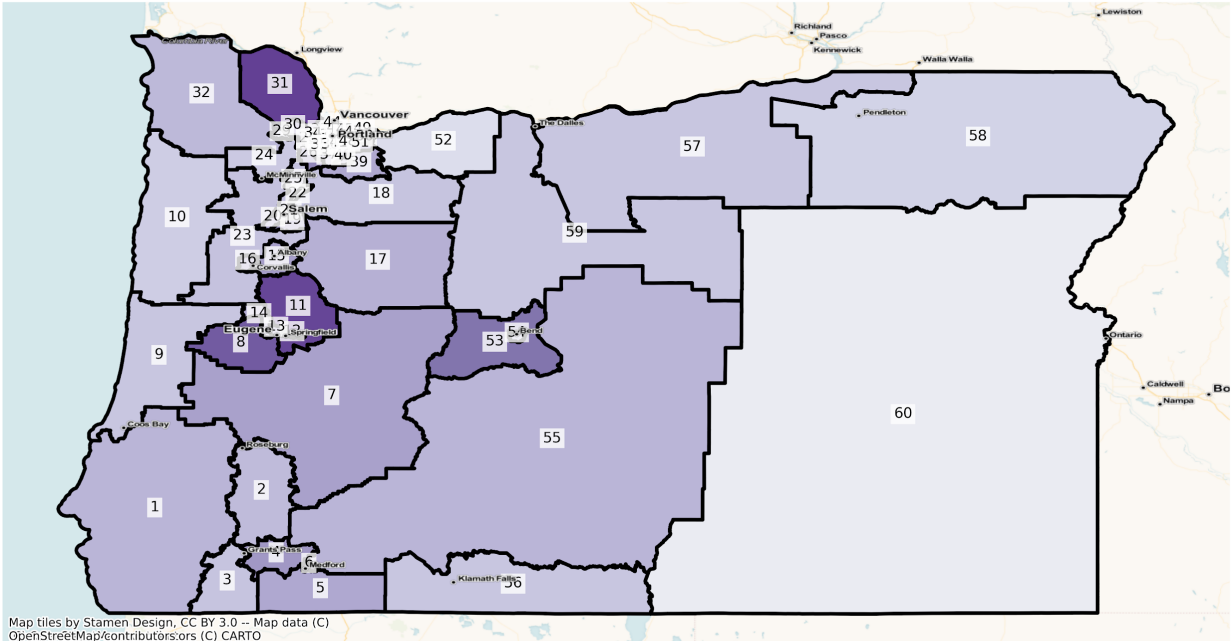
42	63,104	72,984	15.66%
43	64,536	73,248	13.50%
44	63,698	70,337	10.42%
45	63,014	66,616	5.72%
46	63,236	68,302	8.01%
47	62,959	67,702	7.53%
48	62,531	68,169	9.02%
49	63,153	67,738	7.26%
50	63,211	67,891	7.40%
51	63,868	75,526	18.25%
52	63,563	69,675	9.62%
53	64,838	81,896	26.31%
54	63,575	81,098	27.56%
55	63,485	72,034	13.47%
56	63,183	66,010	4.47%
57	62,696	67,965	8.40%
58	63,022	64,069	1.66%
59	63,260	70,814	11.94%
60	62,875	63,581	1.12%

Population by Race and Ethnicity

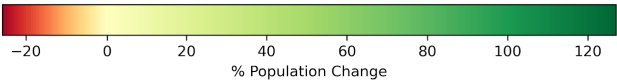
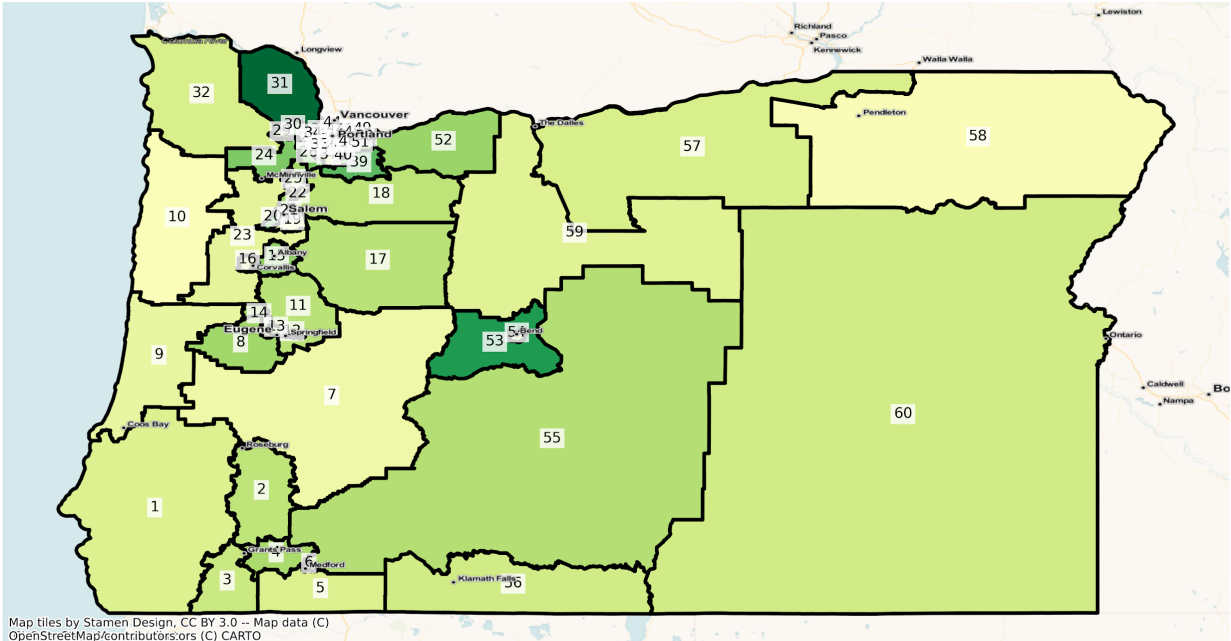
OR State House Districts
Population % Change from 2010 to 2020
Ethnicity: Not Latino White alone



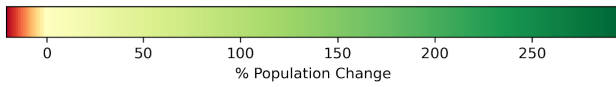
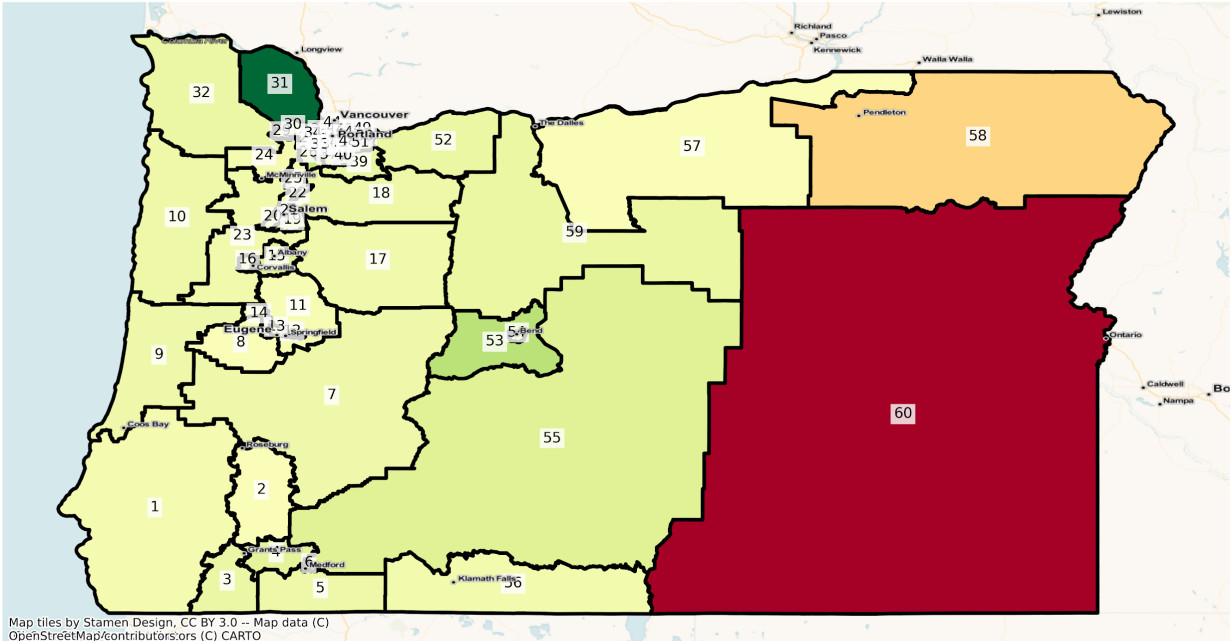
OR State House Districts
 Population % Change from 2010 to 2020
 Ethnicity: Hispanic or Latino



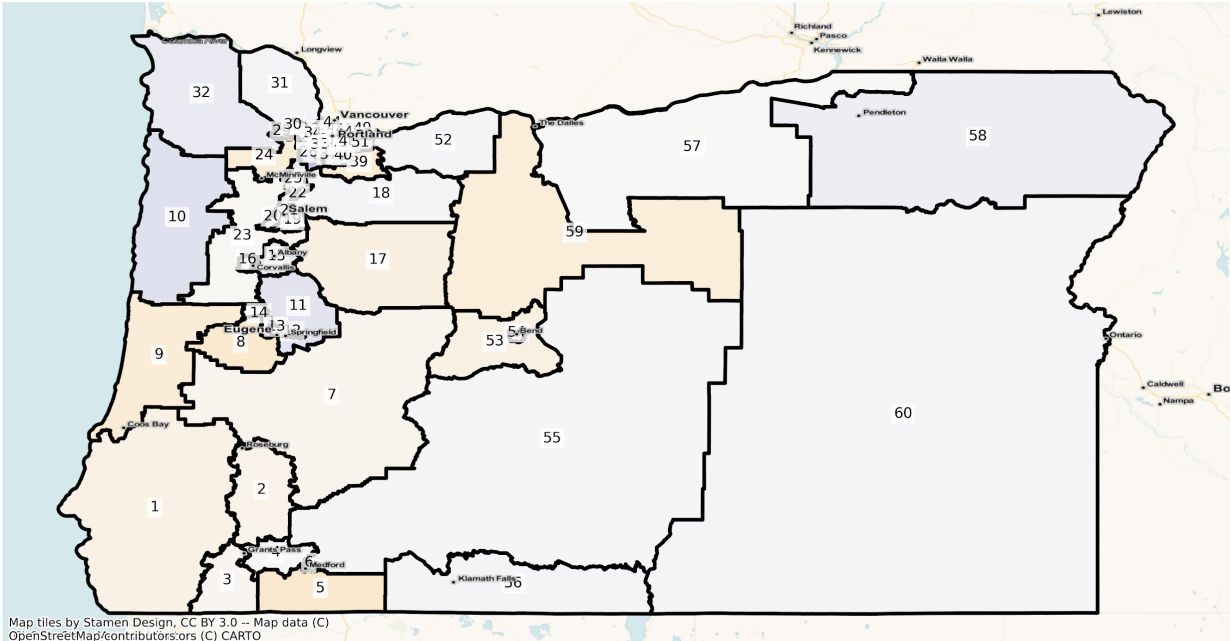
OR State House Districts
 Population % Change from 2010 to 2020
 Ethnicity: Not Latino African American alone



OR State House Districts
 Population % Change from 2010 to 2020
 Ethnicity: Not Latino Asian alone

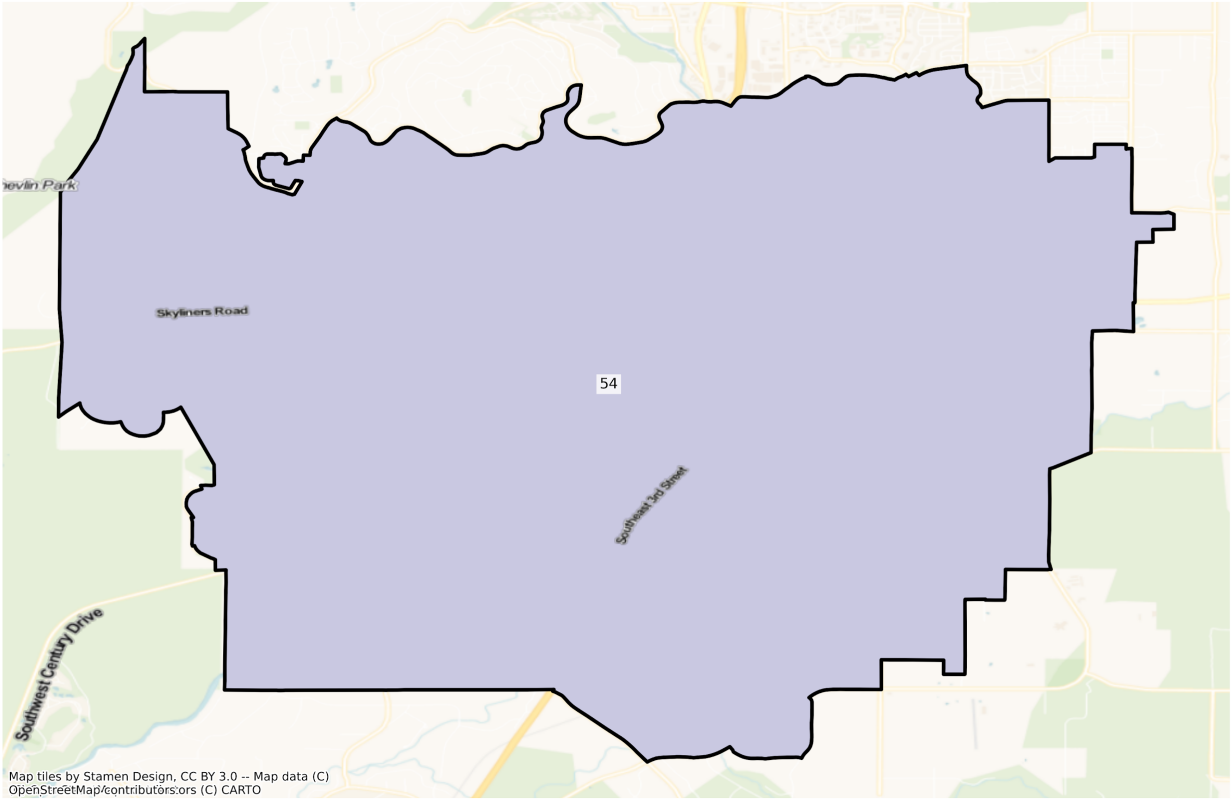


OR State House Districts
 Population % Change from 2010 to 2020
 Ethnicity: Not Latino American Indian and Alaska Native alone

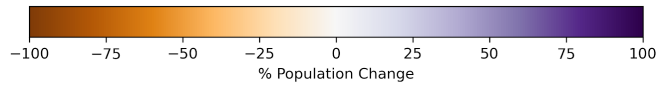


Bend

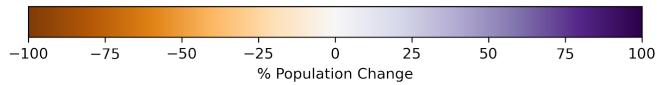
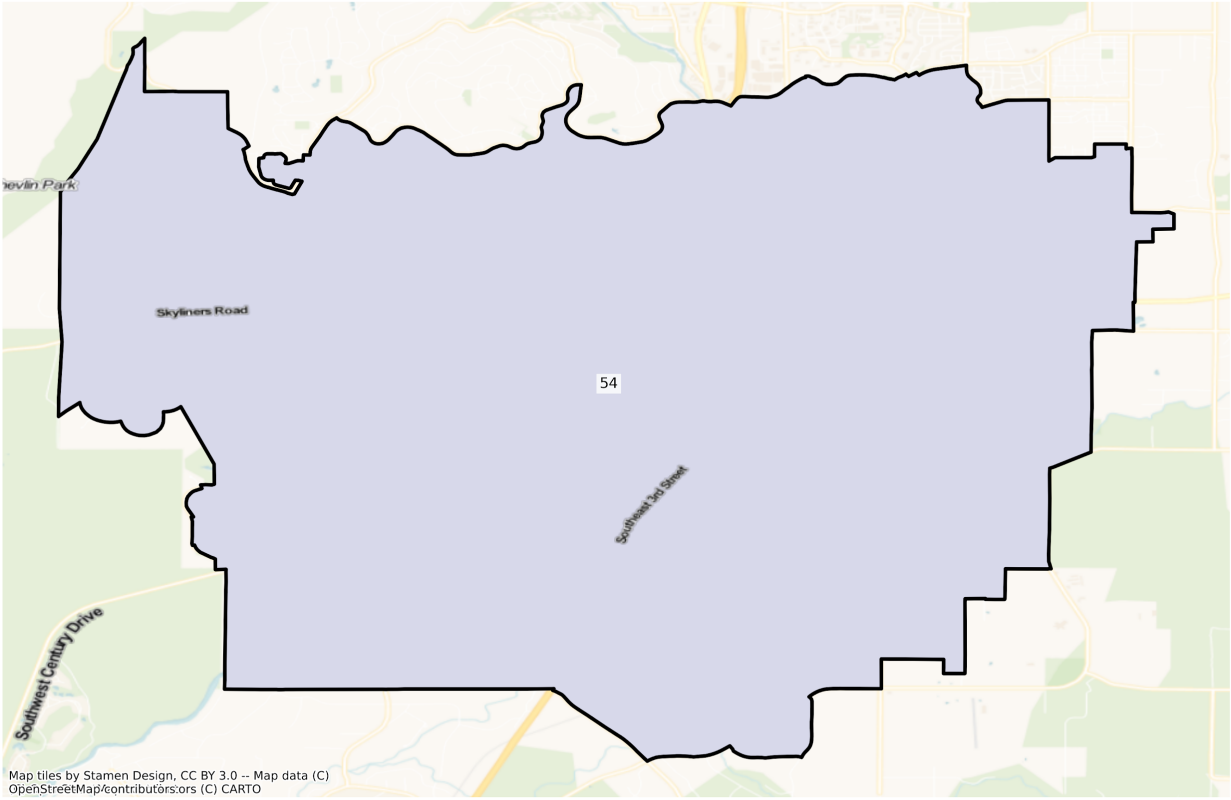
OR Bend State House Districts
Population % Change from 2010 to 2020
Total Population



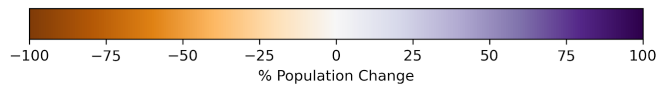
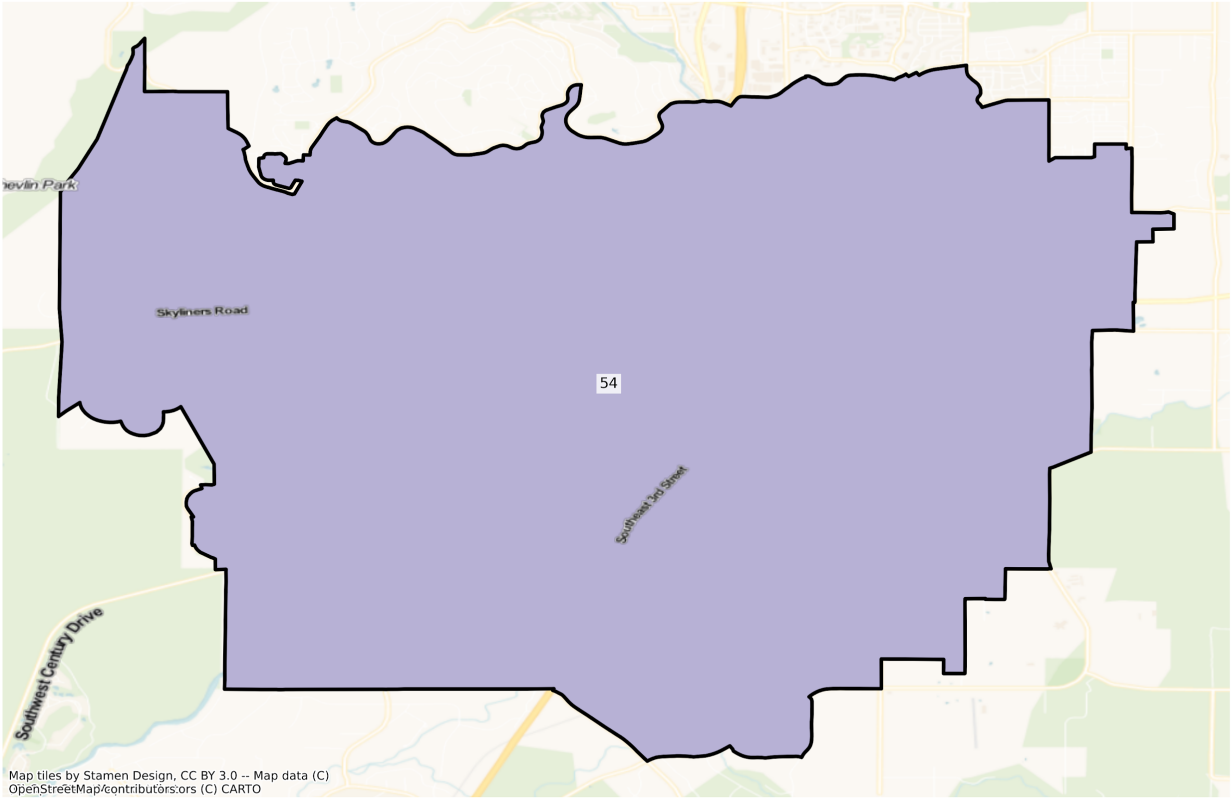
Map tiles by Stamen Design, CC BY 3.0 -- Map data (C)
OpenStreetMap/contributors:ors (C) CARTO



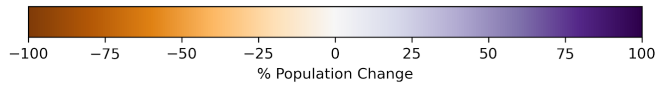
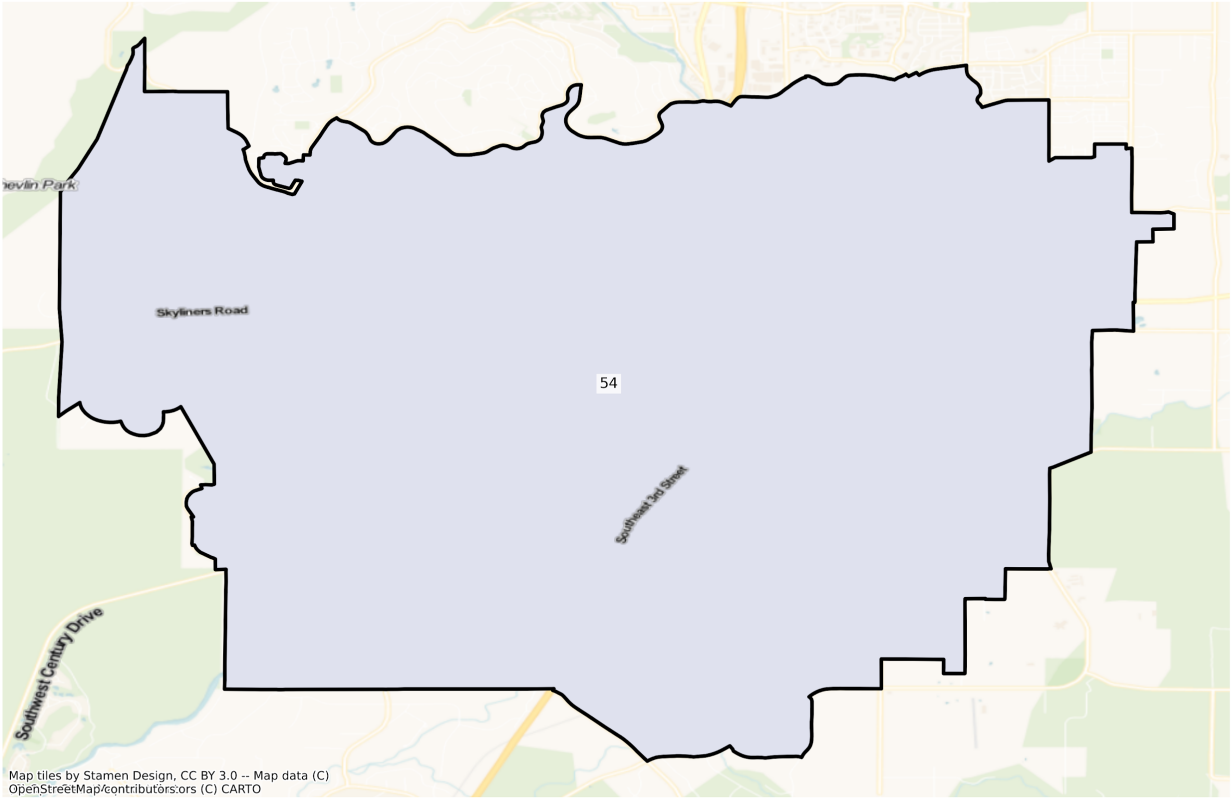
OR Bend State House Districts
Population % Change from 2010 to 2020
Ethnicity: Not Latino White alone



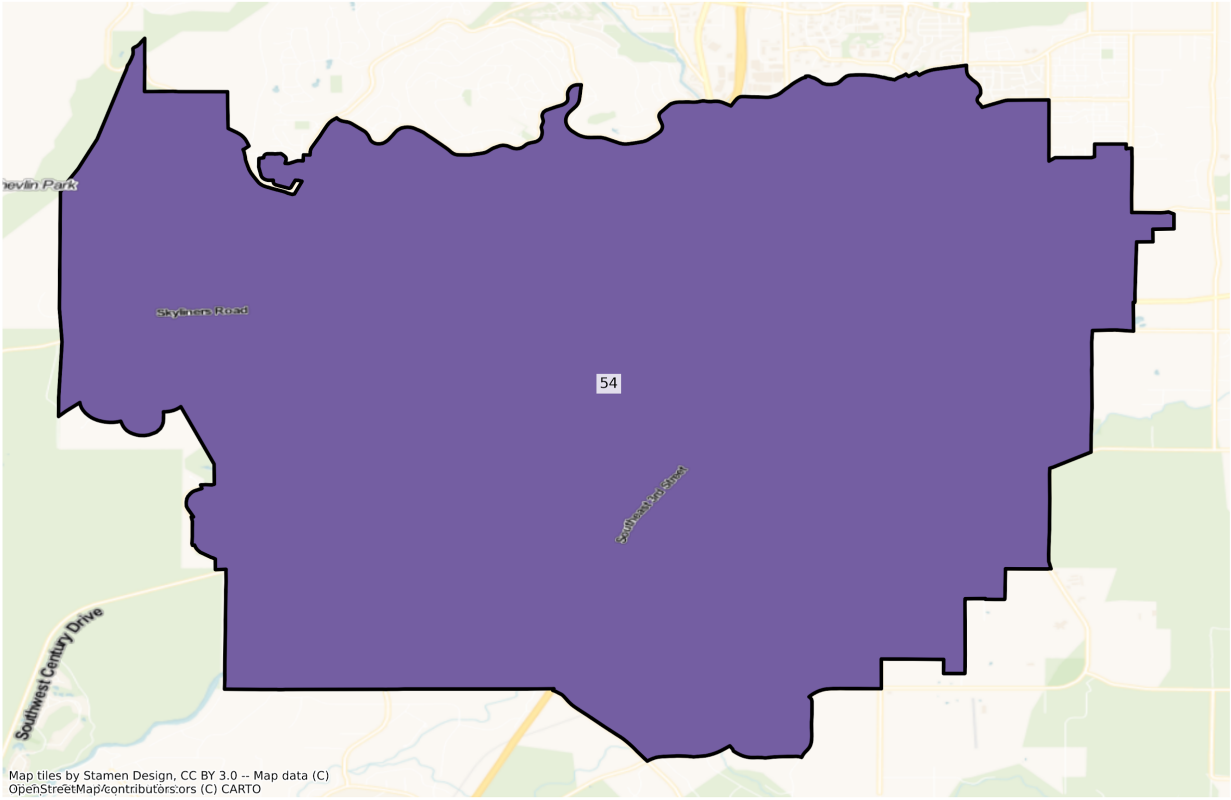
OR Bend State House Districts
Population % Change from 2010 to 2020
Ethnicity: Hispanic or Latino



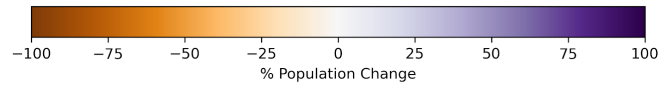
OR Bend State House Districts
Population % Change from 2010 to 2020
Ethnicity: Not Latino African American alone



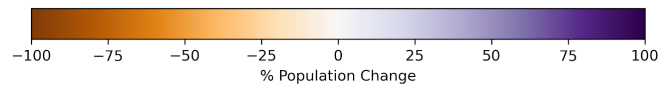
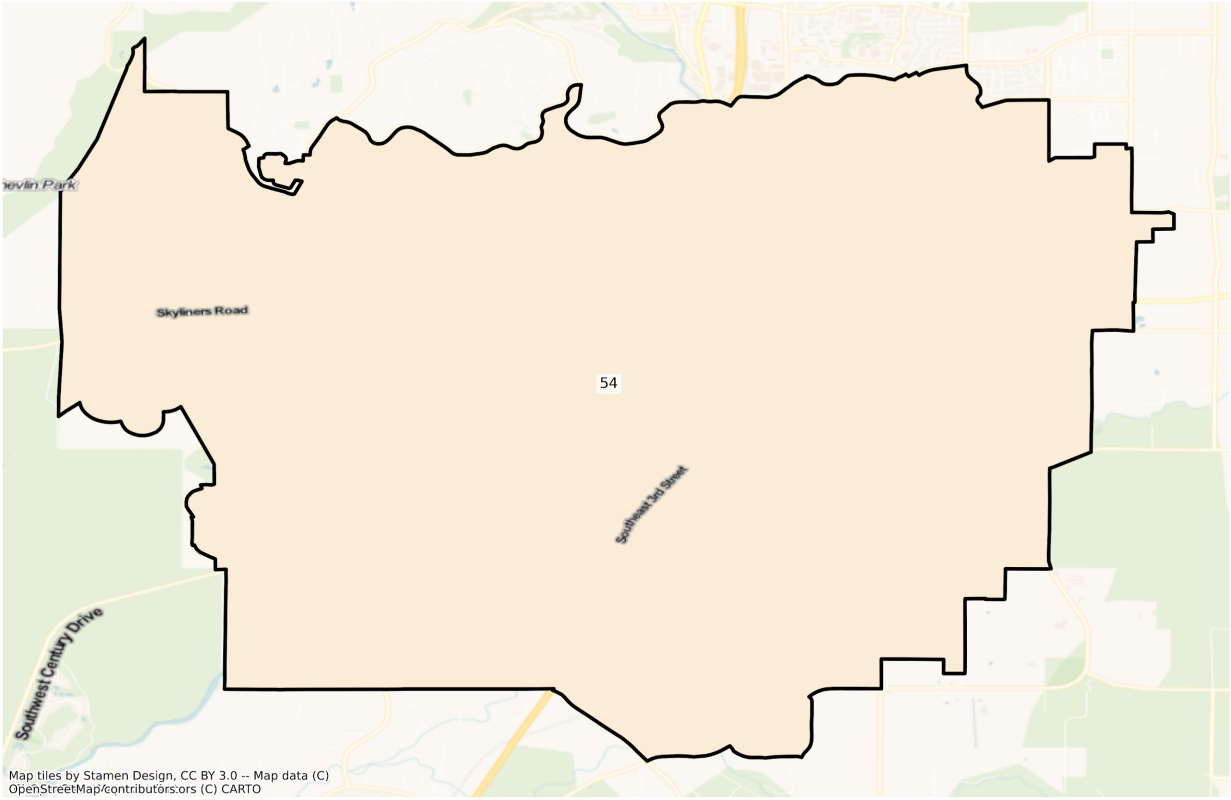
OR Bend State House Districts
Population % Change from 2010 to 2020
Ethnicity: Not Latino Asian alone



Map tiles by Stamen Design, CC BY 3.0 -- Map data (C)
OpenStreetMap/contributors/ors (C) CARTO

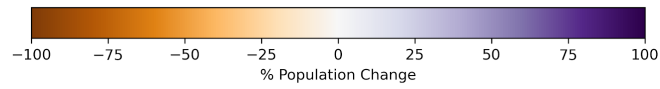
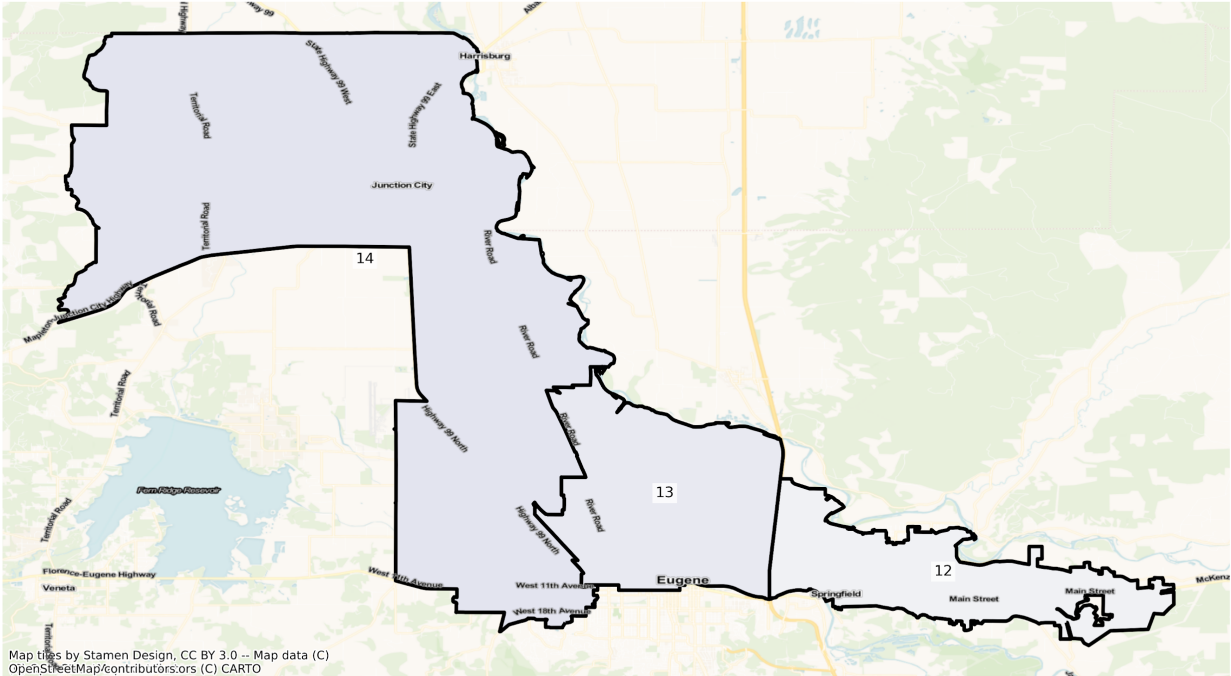


OR Bend State House Districts
Population % Change from 2010 to 2020
Ethnicity: Not Latino American Indian and Alaska Native alone

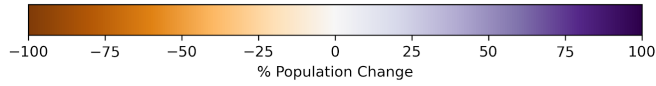
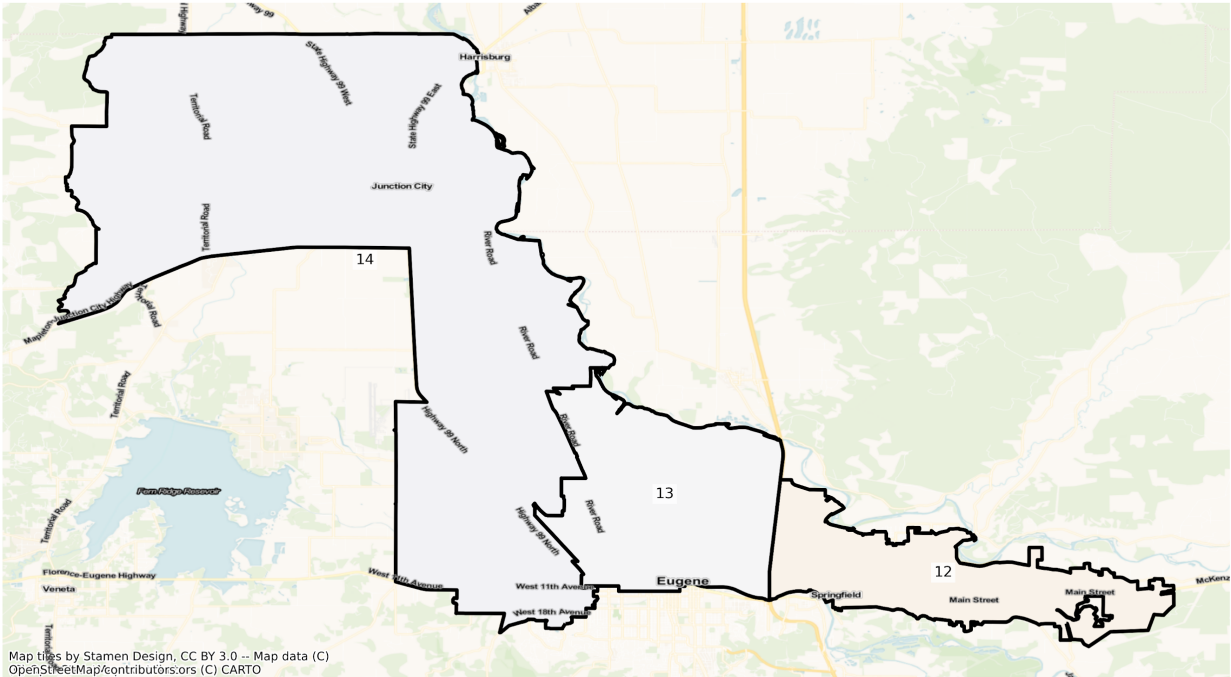


Eugene

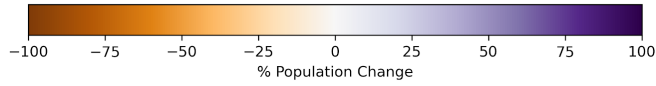
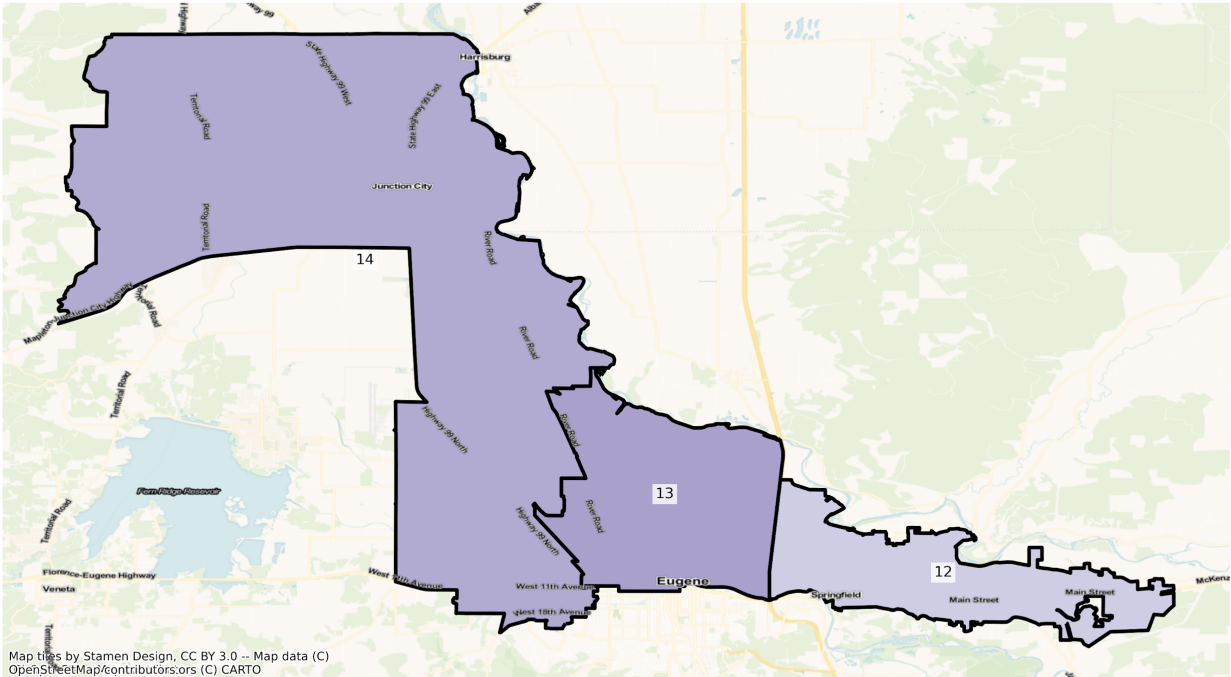
OR Eugene State House Districts
Population % Change from 2010 to 2020
Total Population



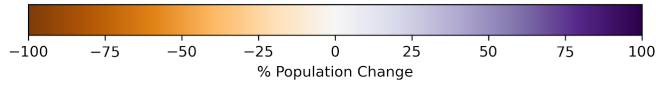
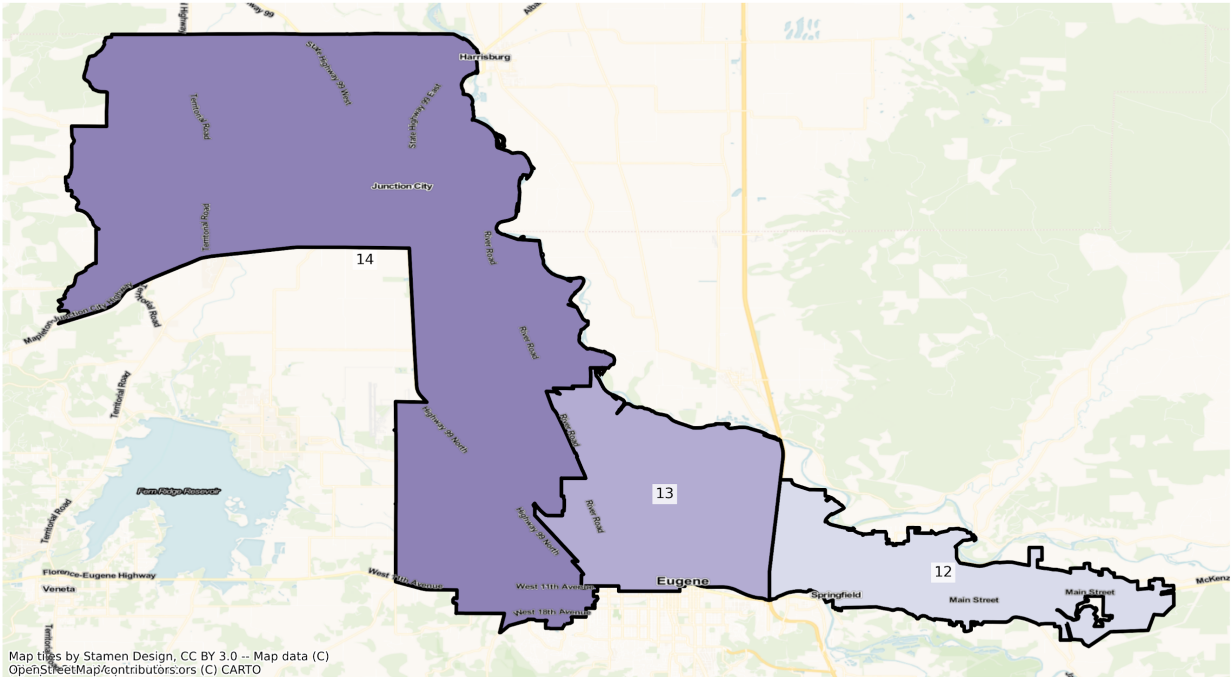
OR Eugene State House Districts
Population % Change from 2010 to 2020
Ethnicity: Not Latino White alone



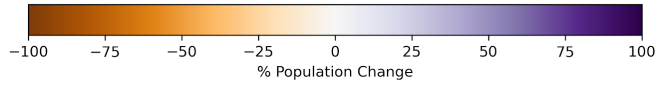
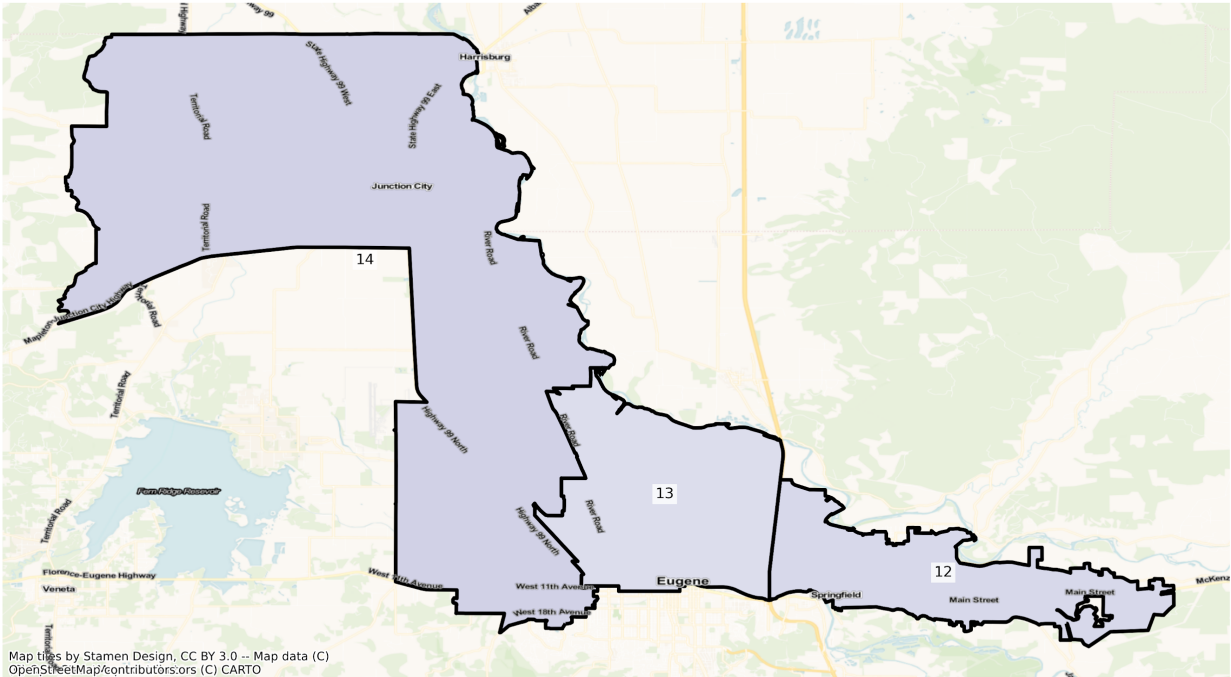
OR Eugene State House Districts
Population % Change from 2010 to 2020
Ethnicity: Hispanic or Latino



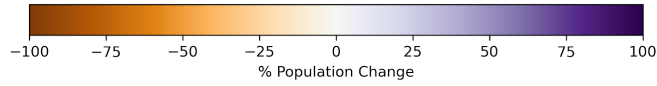
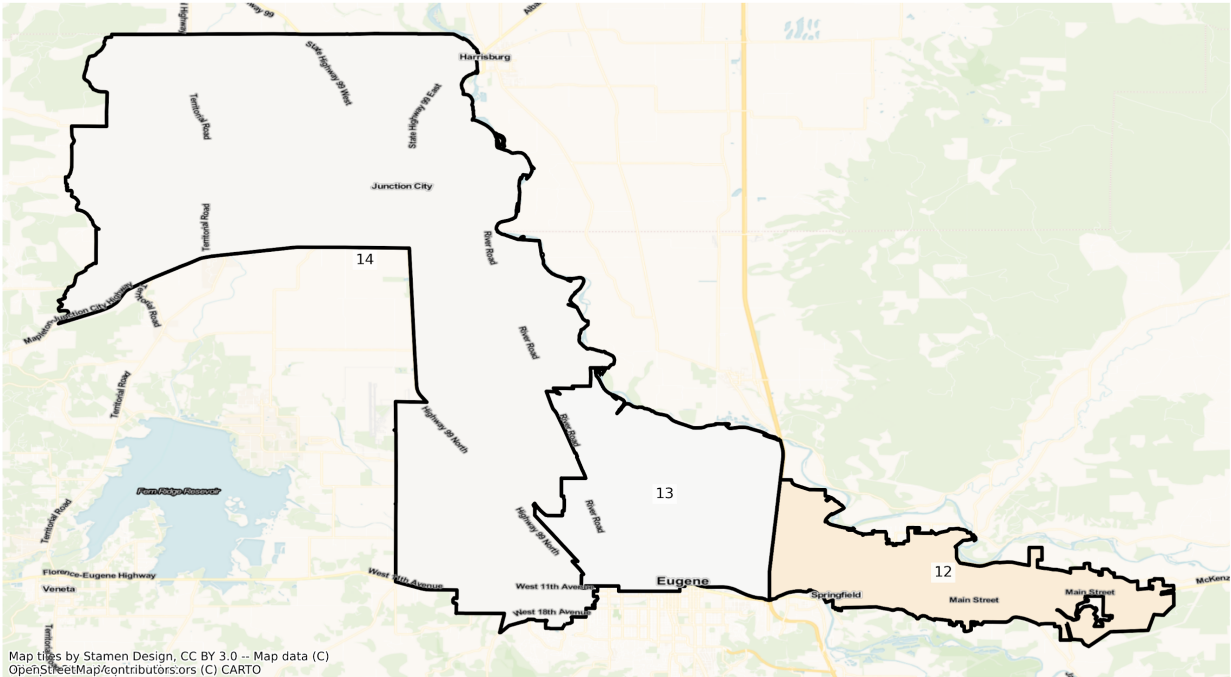
OR Eugene State House Districts
Population % Change from 2010 to 2020
Ethnicity: Not Latino African American alone



OR Eugene State House Districts
Population % Change from 2010 to 2020
Ethnicity: Not Latino Asian alone

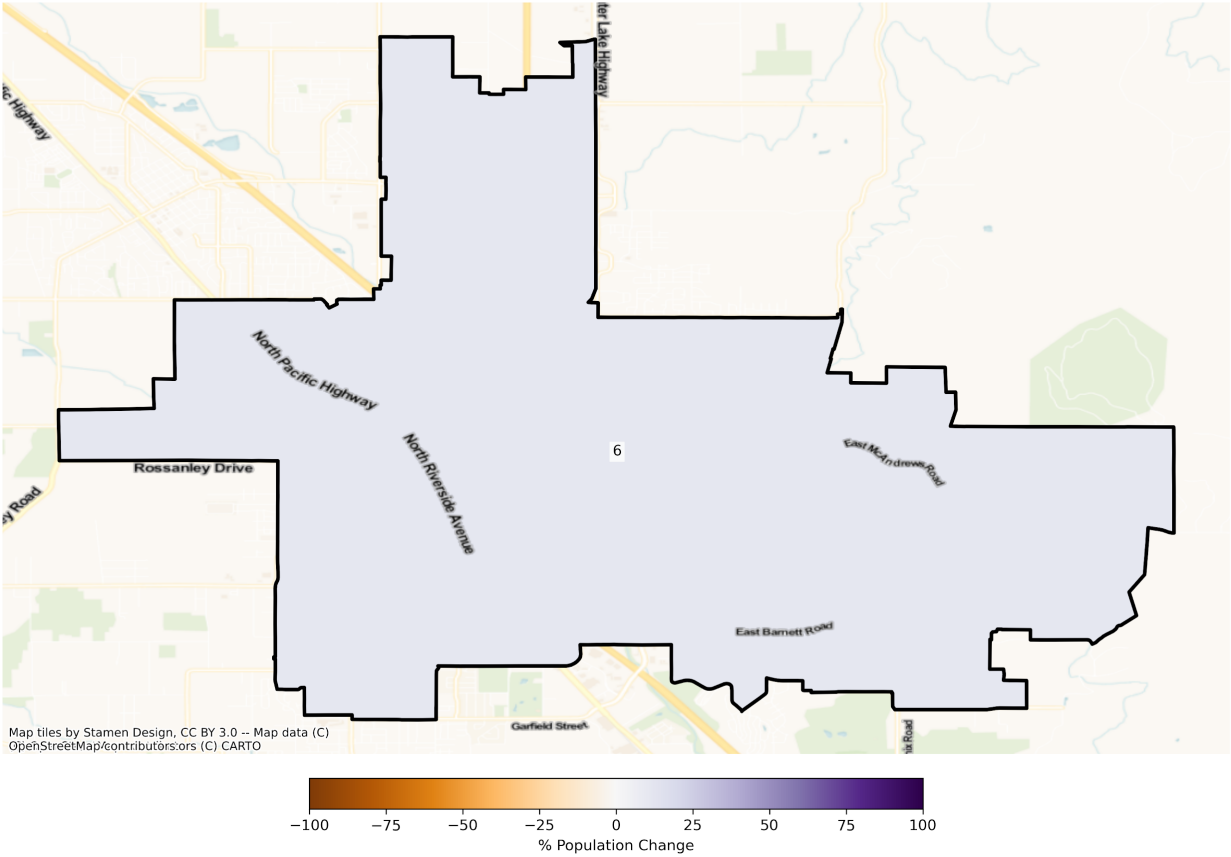


OR Eugene State House Districts
Population % Change from 2010 to 2020
Ethnicity: Not Latino American Indian and Alaska Native alone

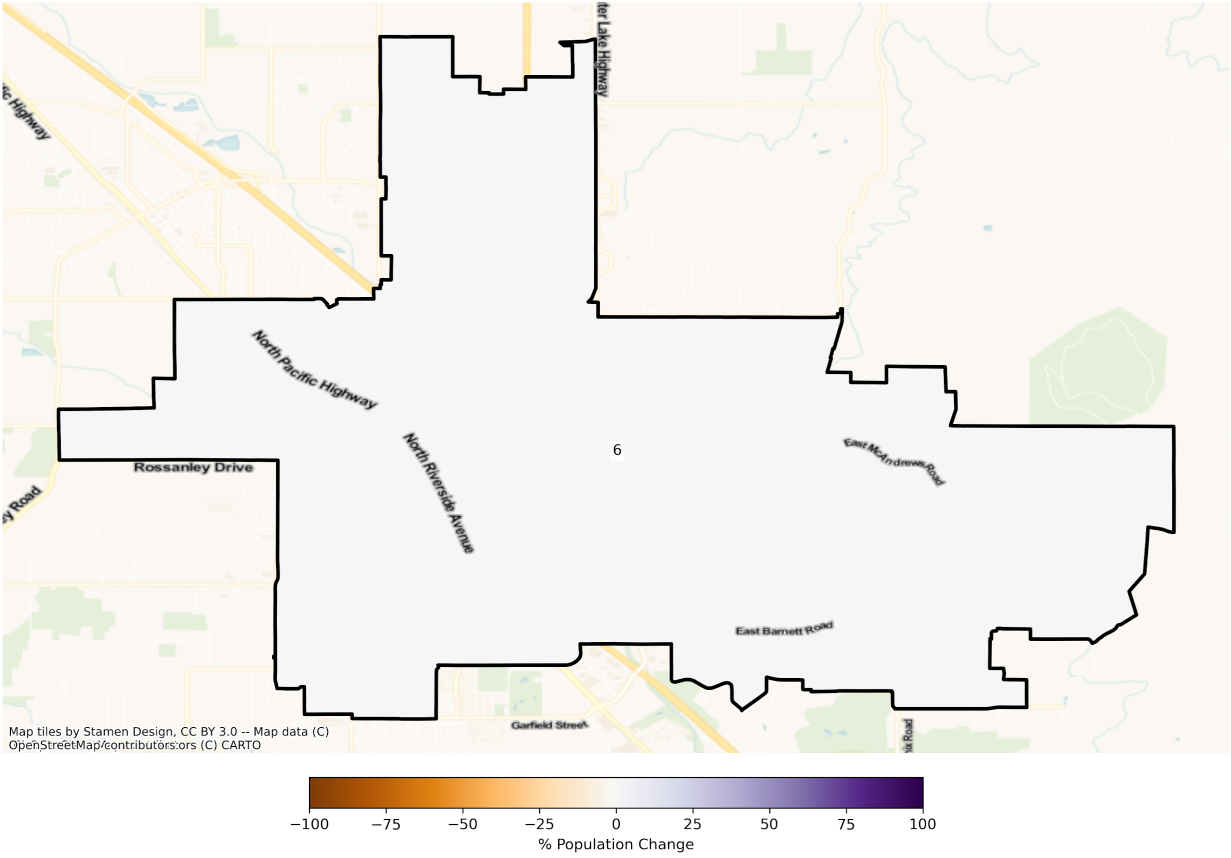


Medford

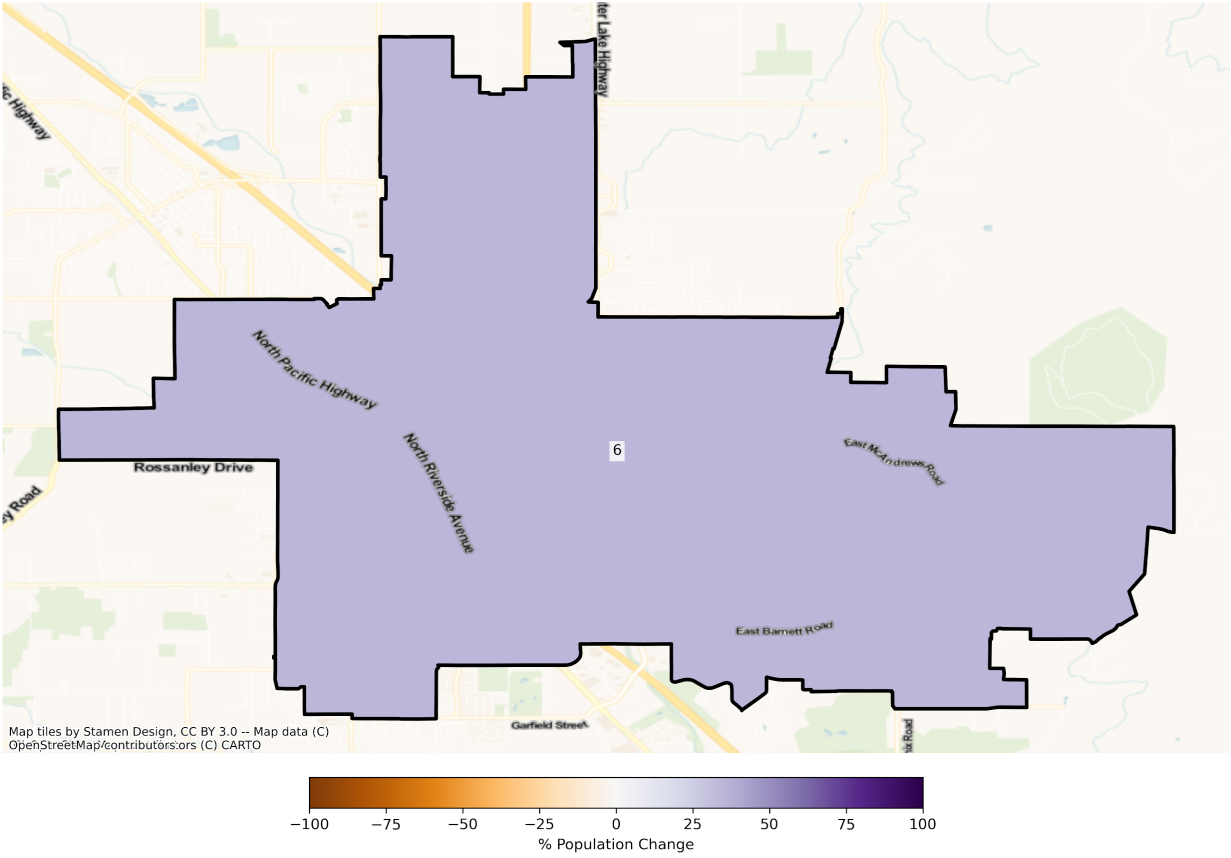
OR Medford State House Districts
Population % Change from 2010 to 2020
Total Population



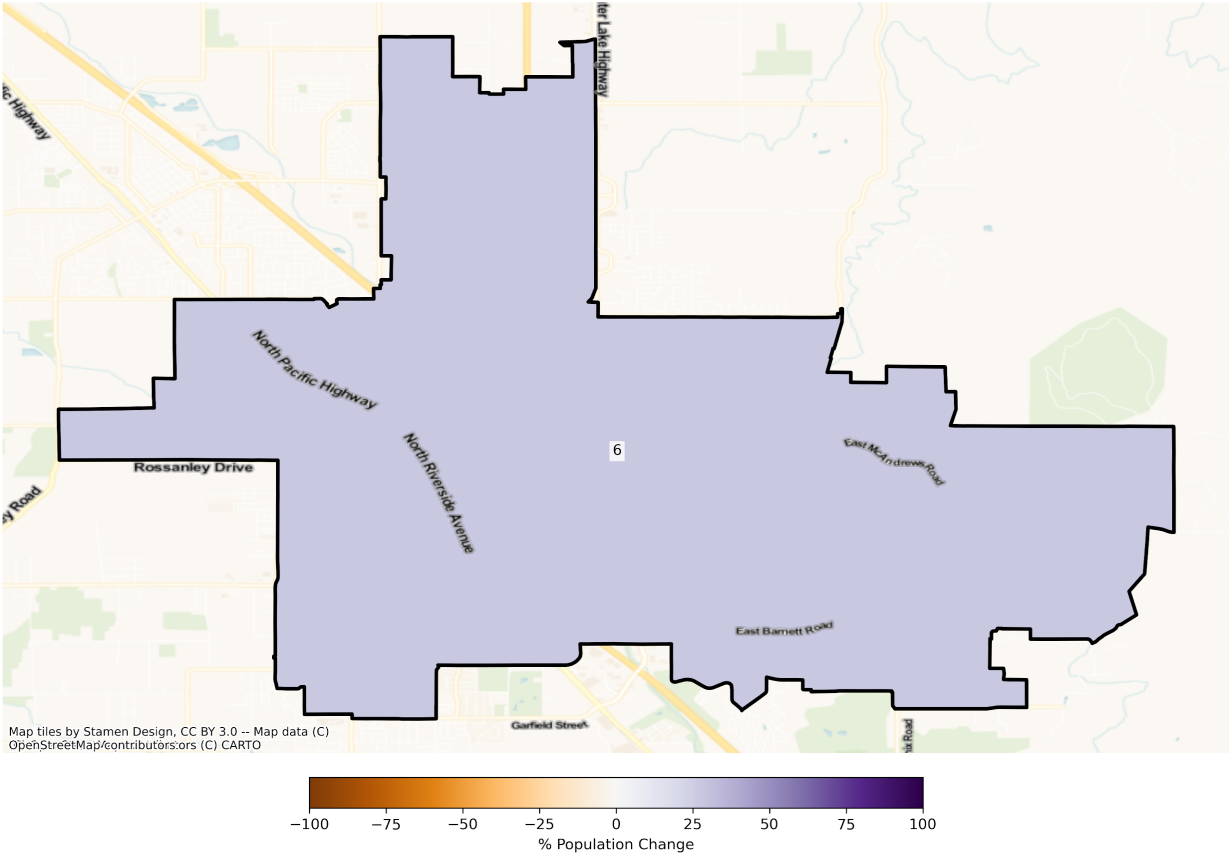
OR Medford State House Districts
Population % Change from 2010 to 2020
Ethnicity: Not Latino White alone



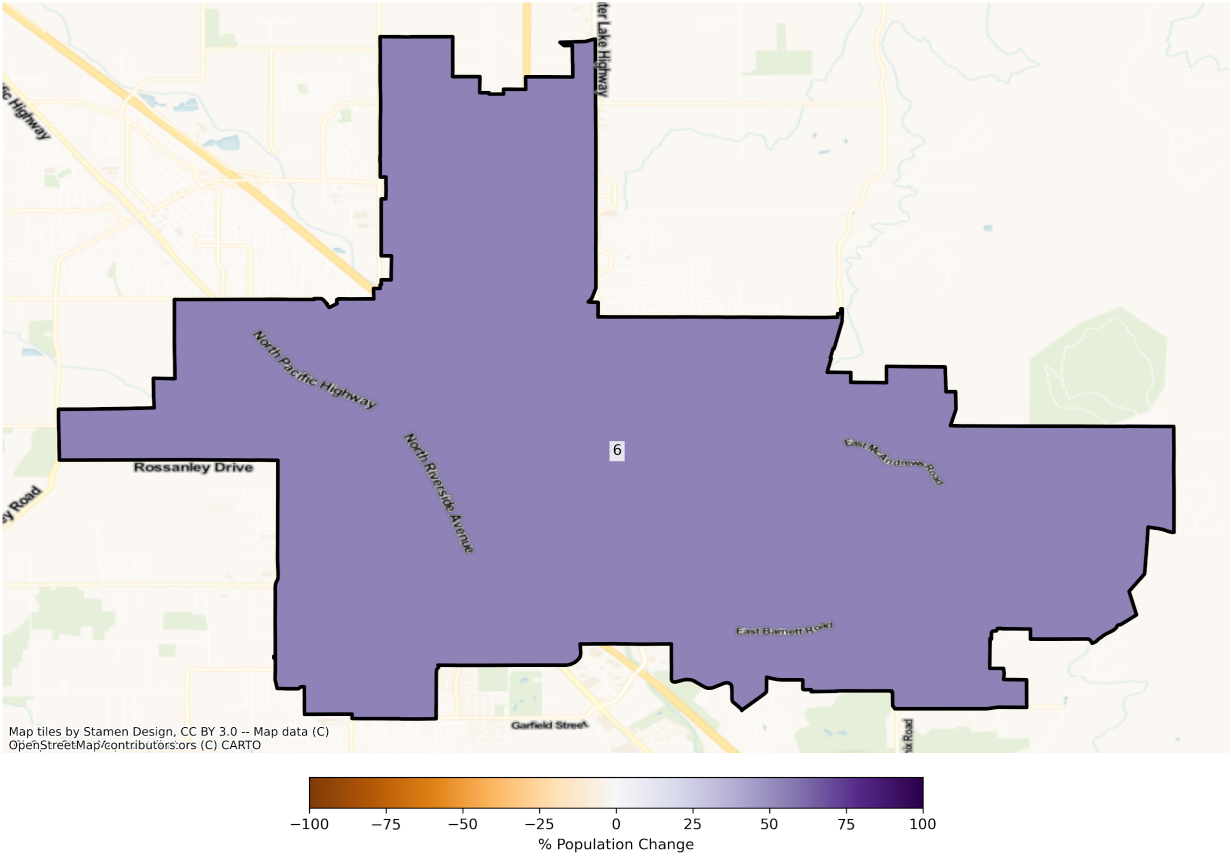
OR Medford State House Districts
Population % Change from 2010 to 2020
Ethnicity: Hispanic or Latino



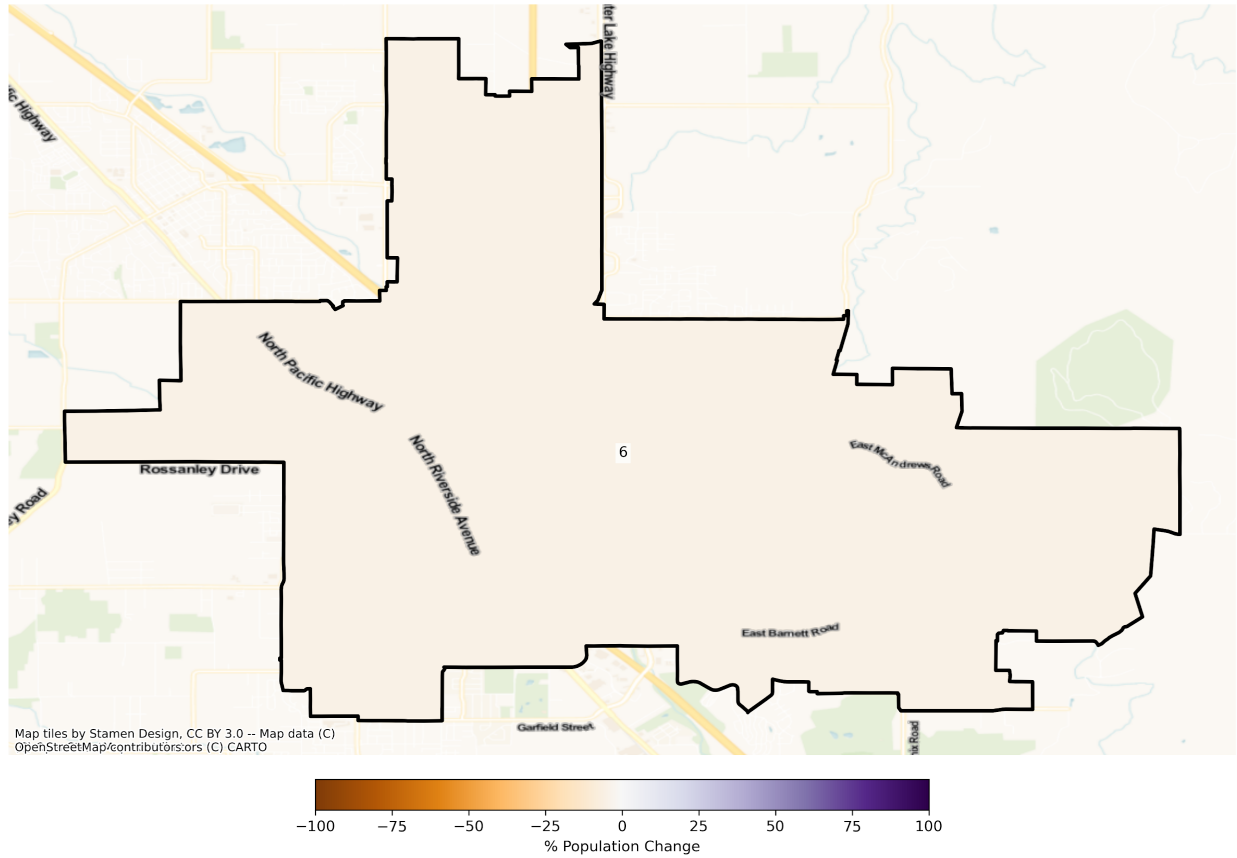
OR Medford State House Districts
Population % Change from 2010 to 2020
Ethnicity: Not Latino African American alone



OR Medford State House Districts
Population % Change from 2010 to 2020
Ethnicity: Not Latino Asian alone

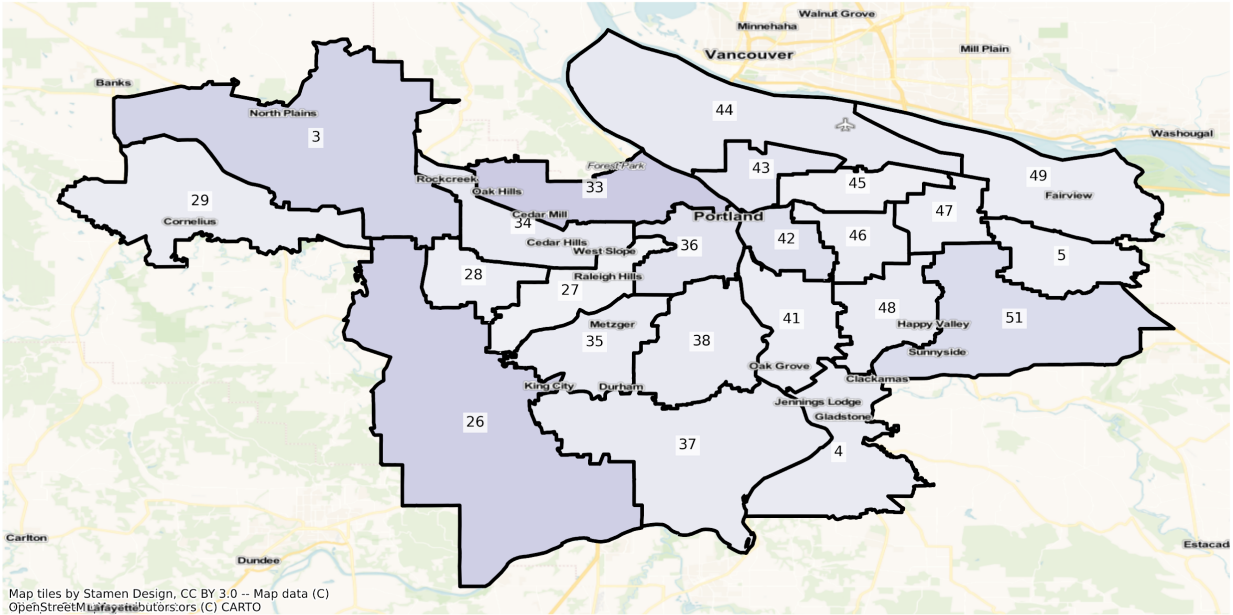


OR Medford State House Districts
Population % Change from 2010 to 2020
Ethnicity: Not Latino American Indian and Alaska Native alone

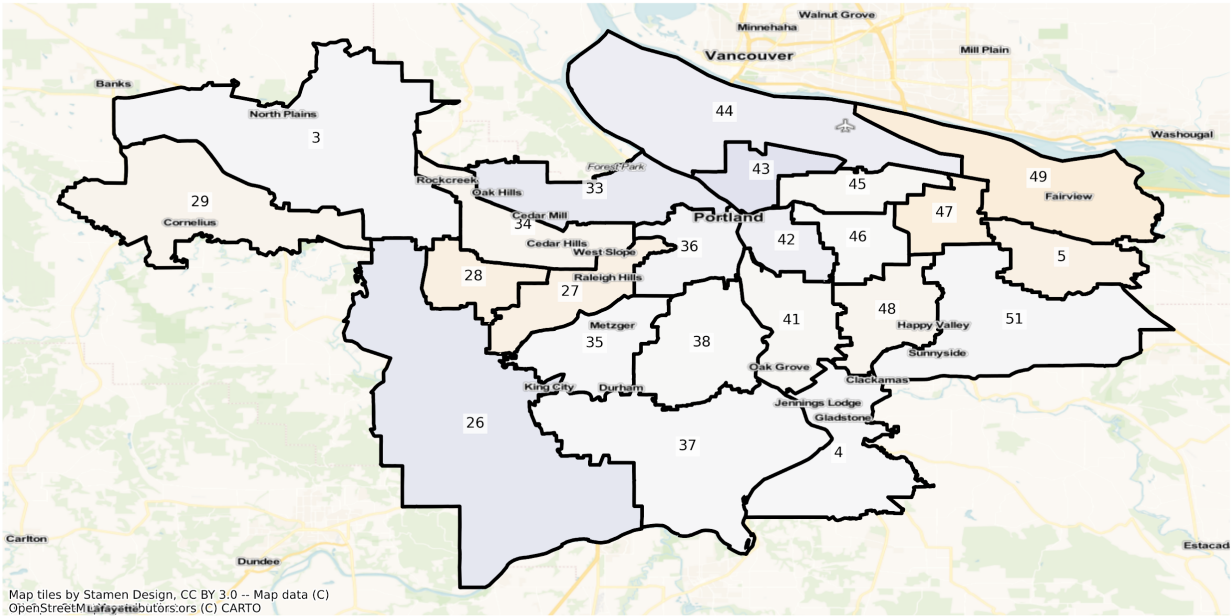


Portland

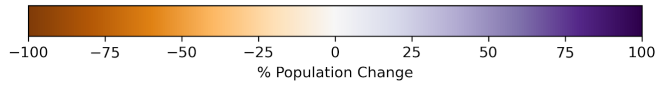
OR Portland State House Districts
Population % Change from 2010 to 2020
Total Population



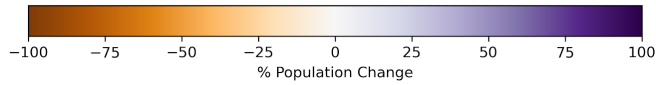
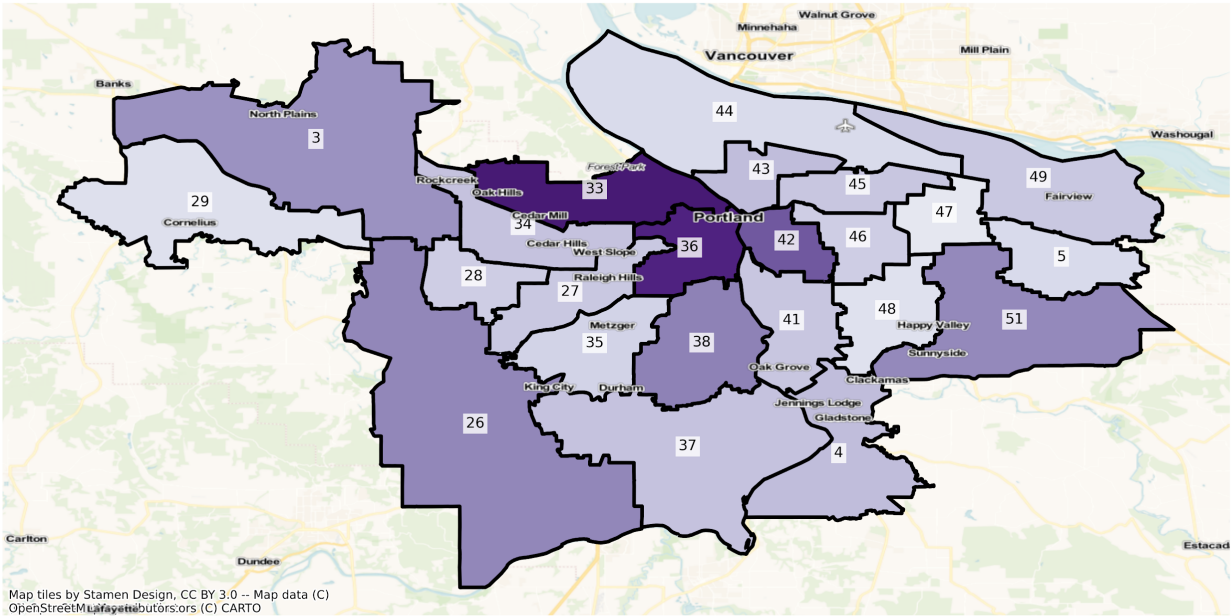
OR Portland State House Districts
 Population % Change from 2010 to 2020
 Ethnicity: Not Latino White alone



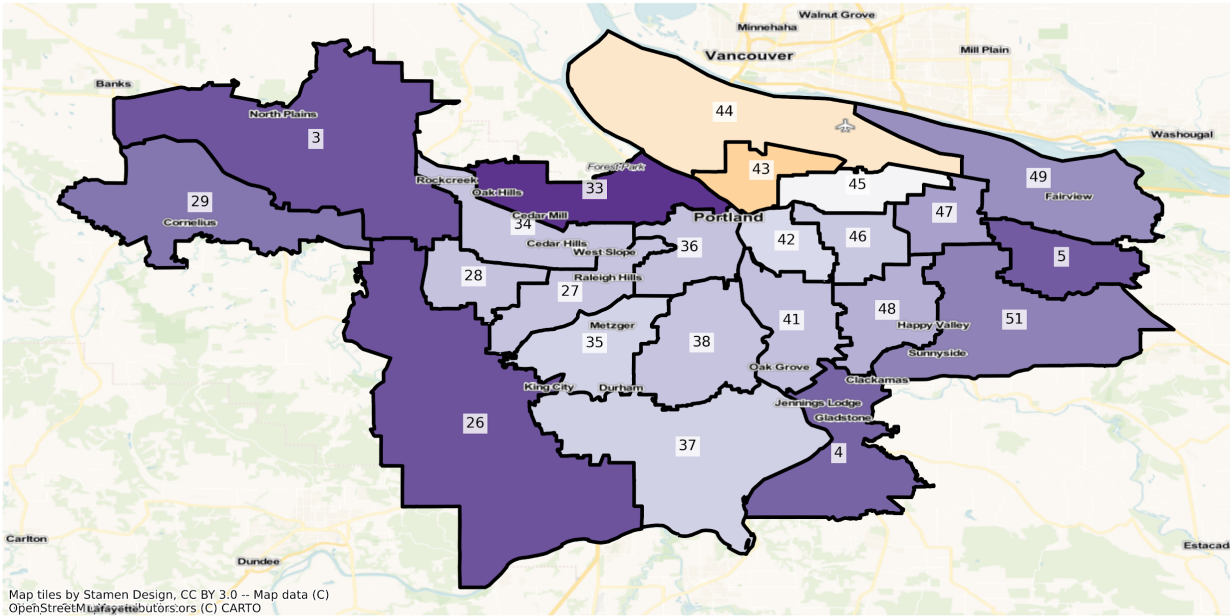
Map tiles by Stamen Design, CC BY 3.0 -- Map data (C) OpenStreetMap contributors, (C) CARTO



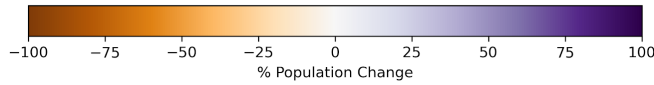
OR Portland State House Districts
 Population % Change from 2010 to 2020
 Ethnicity: Hispanic or Latino



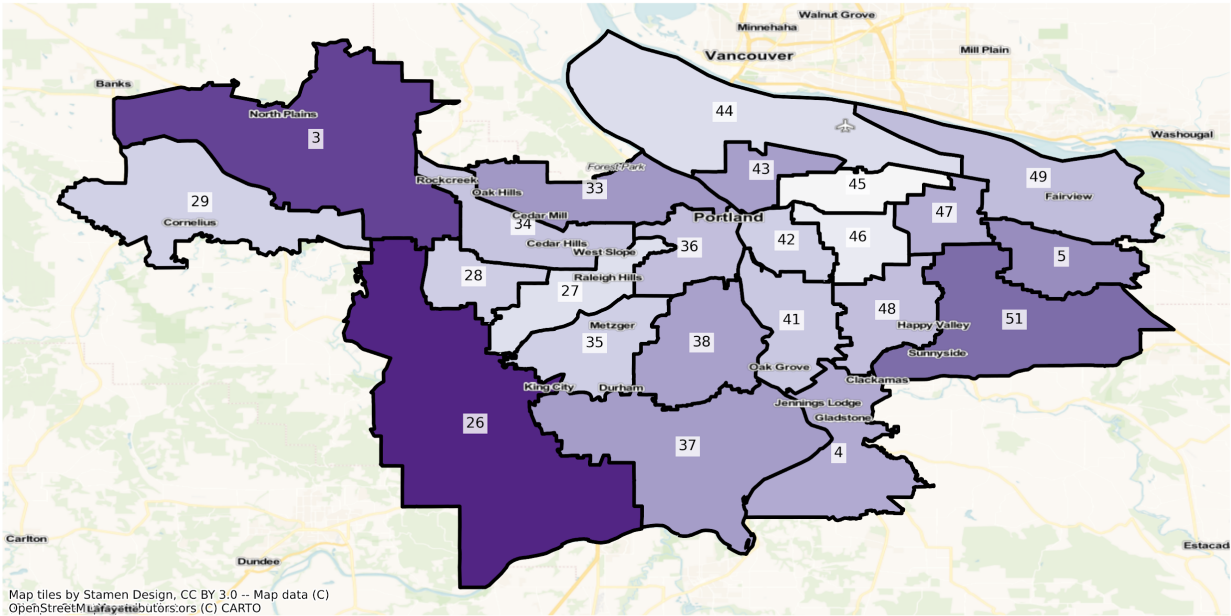
OR Portland State House Districts
 Population % Change from 2010 to 2020
 Ethnicity: Not Latino African American alone



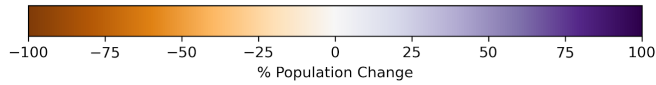
Map tiles by Stamen Design, CC BY 3.0 -- Map data (C) OpenStreetMap contributors, (C) CARTO



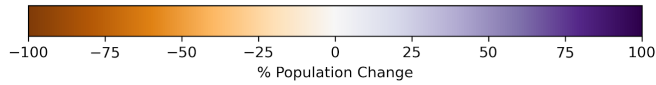
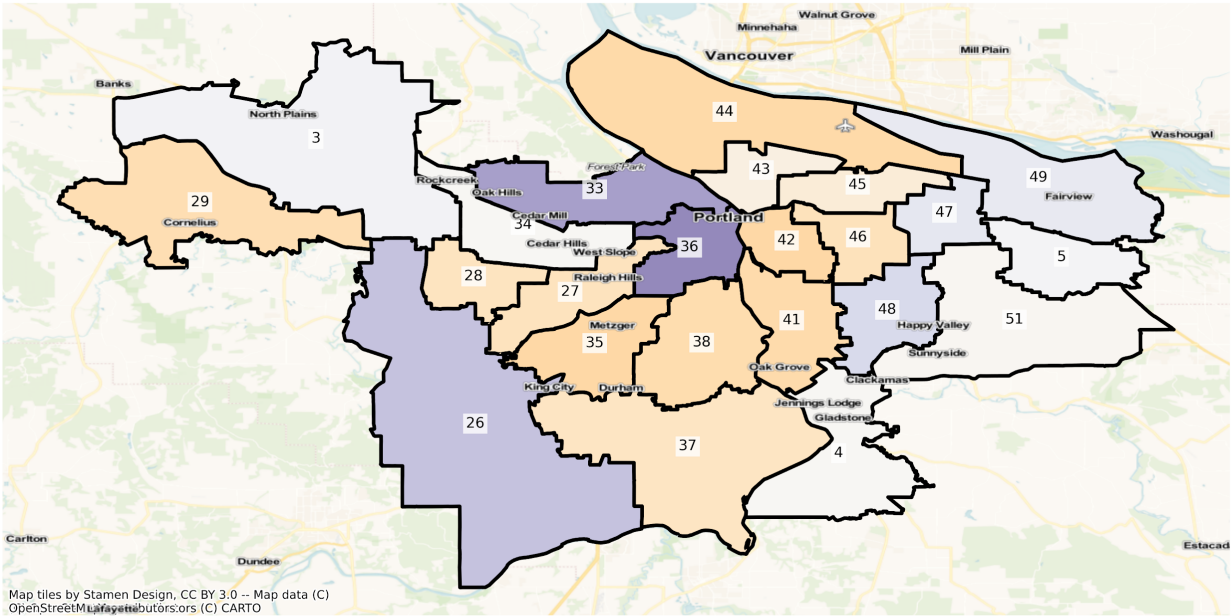
OR Portland State House Districts
 Population % Change from 2010 to 2020
 Ethnicity: Not Latino Asian alone



Map tiles by Stamen Design, CC BY 3.0 -- Map data (C) OpenStreetMap contributors, (C) CARTO

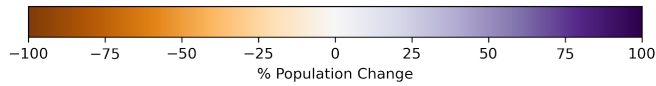
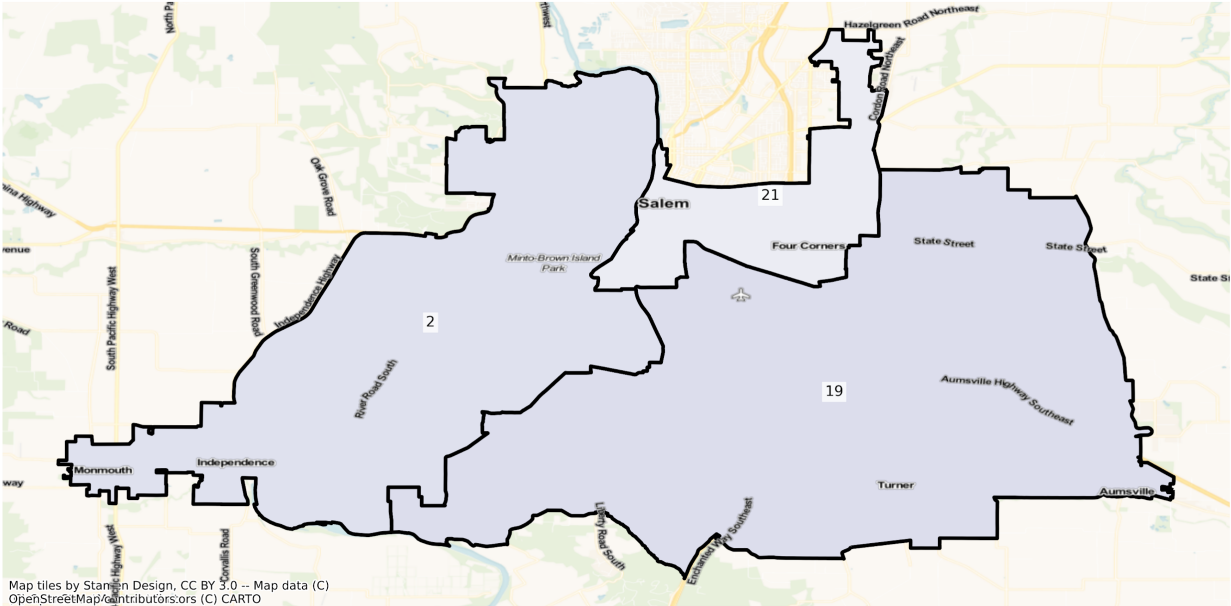


OR Portland State House Districts
 Population % Change from 2010 to 2020
 Ethnicity: Not Latino American Indian and Alaska Native alone

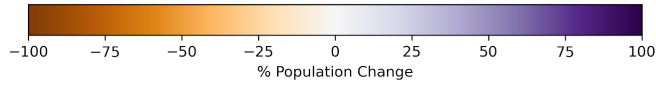
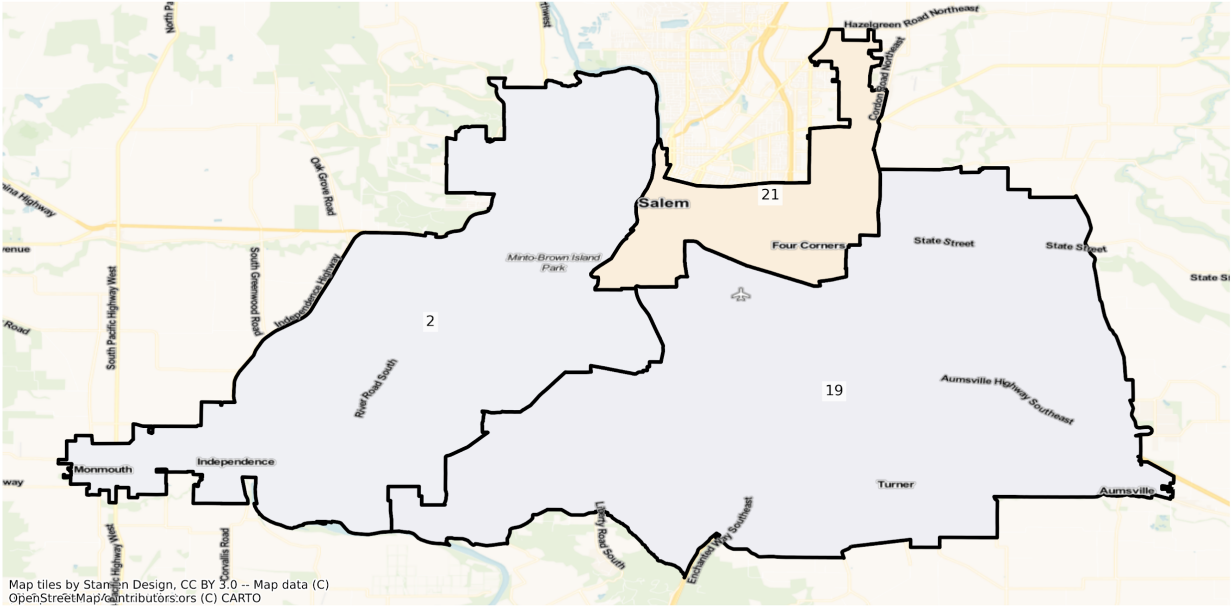


Salem

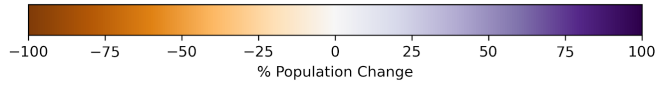
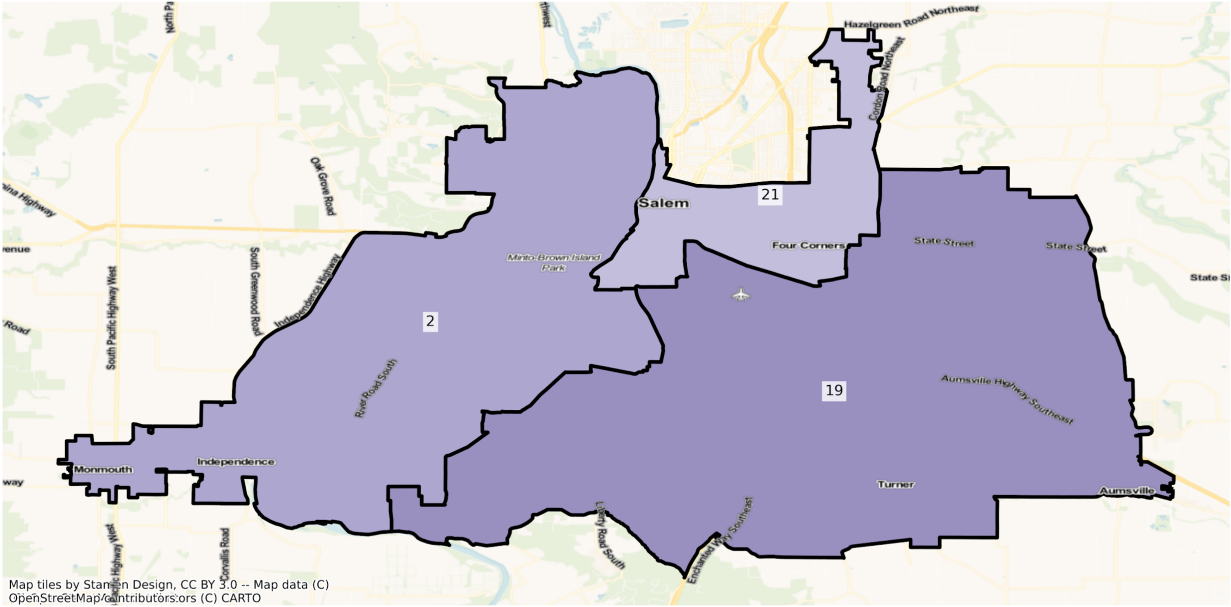
OR Salem State House Districts
Population % Change from 2010 to 2020
Total Population



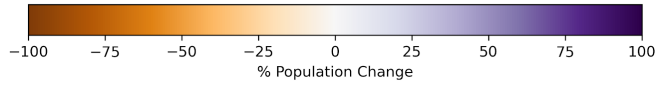
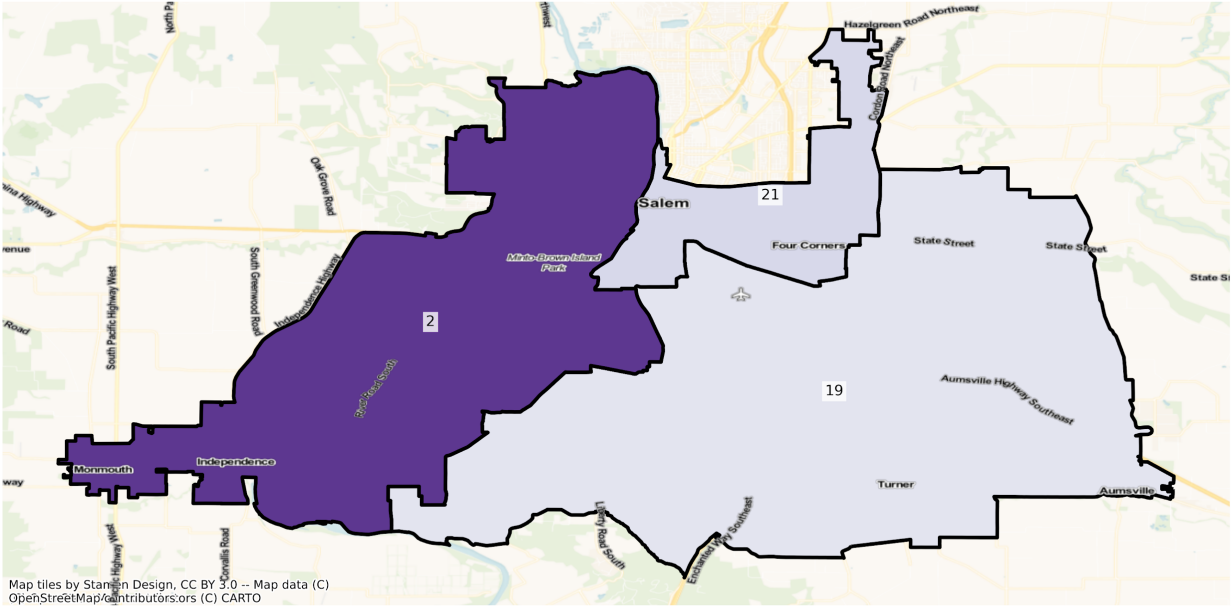
OR Salem State House Districts
Population % Change from 2010 to 2020
Ethnicity: Not Latino White alone



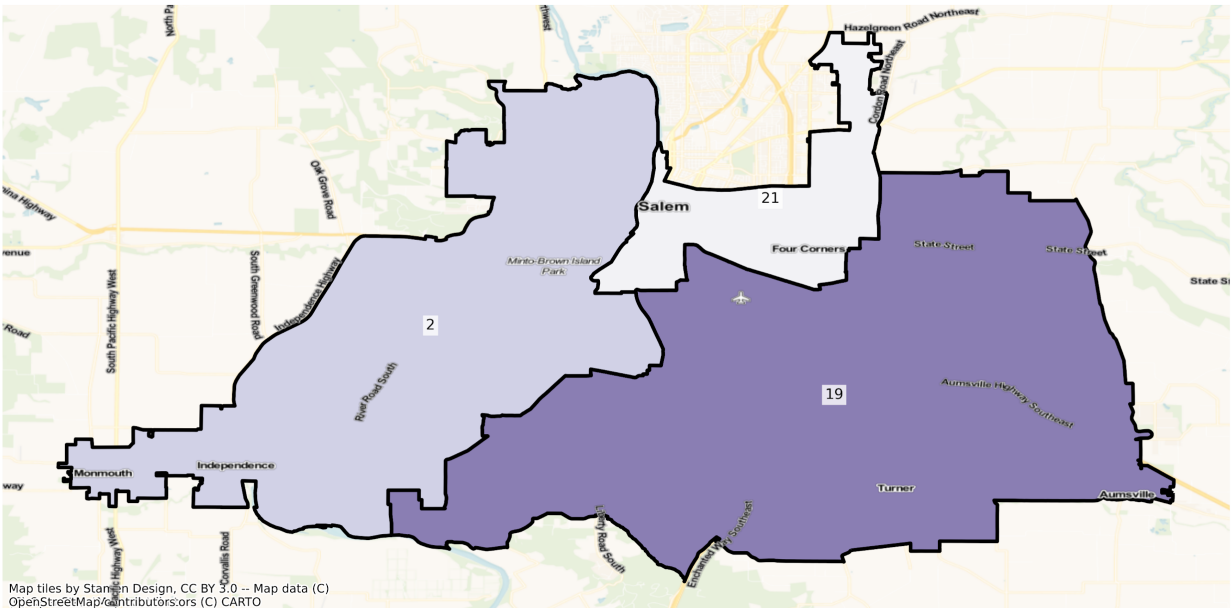
OR Salem State House Districts
Population % Change from 2010 to 2020
Ethnicity: Hispanic or Latino



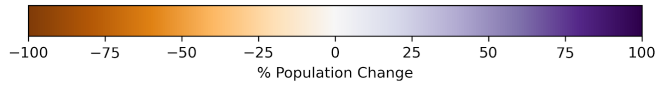
OR Salem State House Districts
Population % Change from 2010 to 2020
Ethnicity: Not Latino African American alone



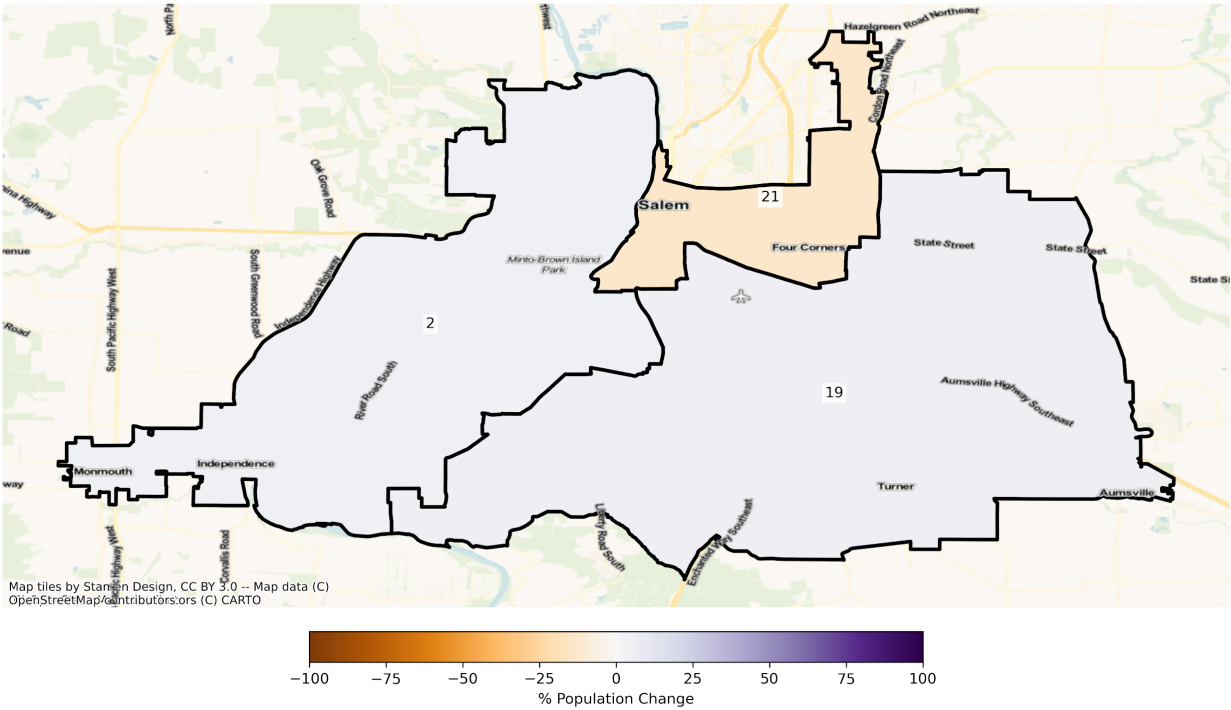
OR Salem State House Districts
Population % Change from 2010 to 2020
Ethnicity: Not Latino Asian alone



Map tiles by Stamen Design, CC BY 3.0 -- Map data (C) OpenStreetMap contributors, ors (C) CARTO



OR Salem State House Districts
 Population % Change from 2010 to 2020
 Ethnicity: Not Latino American Indian and Alaska Native alone



2010 Population by Race and Ethnicity at State House District Level

DISTRICT	Total Population	Hispanic or Latino Origin	White Alone, not Latino	African American Alone, not Latino	AIAN Alone, not Latino ¹	Asian Alone, not Latino	NHPI Alone, not Latino ²	Other Alone, not Latino	Two or More, not Latino
1	64,187	2,866	57,552	160	1,124	456	52	80	1,897
2	62,813	3,027	55,876	182	1,104	681	77	60	1,806
3	64,919	4,462	57,103	239	735	543	93	62	1,682
4	64,235	6,047	55,232	245	644	485	99	52	1,431
5	62,923	5,615	53,676	399	491	827	127	99	1,689
6	63,708	9,160	50,330	539	614	920	293	69	1,783
7	64,097	3,088	57,502	223	882	463	58	93	1,788
8	62,957	2,929	54,732	515	511	1,856	81	140	2,193
9	63,232	3,419	55,268	239	1,284	687	126	63	2,146

10	64,151	5,410	53,086	518	2,327	716	99	54	1,941
11	63,248	2,971	55,423	390	513	1,854	92	92	1,913
12	62,978	7,463	50,901	607	750	793	190	71	2,203
13	63,425	4,657	52,818	812	544	2,130	133	129	2,202
14	64,085	6,620	52,499	640	684	1,201	181	62	2,198
15	63,360	6,369	53,576	311	578	797	94	88	1,547
16	63,473	4,509	51,518	632	342	4,087	181	110	2,094
17	64,217	3,858	57,203	185	789	495	77	50	1,560
18	63,436	9,018	51,964	197	454	598	101	60	1,044
19	63,844	8,418	50,134	832	705	1,430	485	93	1,747
20	64,675	8,722	51,068	476	621	1,572	275	78	1,863
21	64,647	17,415	41,042	968	841	1,948	654	80	1,699
22	64,397	32,890	27,609	519	588	780	688	110	1,213
23	63,587	5,152	55,062	190	980	562	78	82	1,481
24	63,904	10,652	49,340	345	561	1,284	133	98	1,491
25	64,850	10,311	50,639	401	504	1,119	260	74	1,542
26	64,687	6,462	51,477	719	330	3,505	223	95	1,876
27	64,811	7,862	48,056	1,149	239	4,739	315	181	2,270
28	64,512	12,405	41,999	1,568	364	5,598	236	100	2,242
29	65,134	22,362	38,221	534	408	1,736	184	90	1,599
30	64,704	9,116	43,680	1,458	325	7,455	243	118	2,309
31	64,104	2,831	56,321	341	716	1,860	121	62	1,852
32	64,407	5,227	56,071	239	507	732	147	78	1,406
33	64,251	3,226	45,979	883	168	11,557	117	149	2,172
34	64,650	9,722	43,896	1,453	311	6,709	223	119	2,217
35	64,796	7,294	49,232	1,148	329	4,069	516	104	2,104
36	64,311	3,145	52,934	1,658	425	3,682	118	122	2,227
37	64,758	6,411	53,089	565	263	2,258	297	104	1,771
38	64,569	2,776	55,128	957	257	3,248	159	119	1,925
39	63,724	5,626	55,112	201	473	988	78	64	1,182
40	64,524	5,137	55,490	444	444	1,124	136	68	1,681

41	63,971	4,382	54,629	680	432	1,750	143	90	1,865
42	63,104	3,522	52,265	1,285	418	3,125	111	156	2,222
43	64,536	5,770	42,113	11,282	446	1,853	182	192	2,698
44	63,698	9,599	40,479	6,540	713	2,583	700	171	2,913
45	63,014	4,964	46,146	3,708	458	4,958	350	124	2,306
46	63,236	5,493	44,908	2,230	495	7,279	424	124	2,283
47	62,959	10,117	38,579	4,655	543	6,164	546	118	2,237
48	62,531	8,820	42,363	1,999	485	6,395	287	93	2,089
49	63,153	12,101	42,638	2,383	490	2,943	449	95	2,054
50	63,211	11,563	44,328	1,654	481	2,729	356	86	2,014
51	63,868	5,897	46,123	1,831	390	7,090	330	108	2,099
52	63,563	9,389	50,908	244	457	838	113	61	1,553
53	64,838	4,961	57,317	183	519	492	84	60	1,222
54	63,575	5,621	55,016	291	433	761	69	67	1,317
55	63,485	3,602	56,430	145	1,388	326	85	44	1,465
56	63,183	7,005	51,359	392	1,763	624	64	60	1,916
57	62,696	19,632	40,614	346	614	471	87	55	877
58	63,022	3,559	54,538	408	2,315	495	265	78	1,364
59	63,260	8,482	48,308	237	4,404	369	183	62	1,215
60	62,875	10,933	48,943	410	733	647	29	36	1,144

¹American Indian and Alaska Native Alone, Not Latino

²Native Hawaiian and Pacific Islander Alone, Not Latino

2020 Population by Race and Ethnicity at State House District Level

DISTRICT	Total Population	Hispanic or Latino Origin	White Alone, not Latino	African American Alone, not Latino	AIAN Alone, not Latino ¹	Asian Alone, not Latino	NHPI Alone, not Latino ²	Other Alone, not Latino	Two or More, not Latino
1	67,160	3,888	56,884	196	1,068	530	66	330	4,198
2	64,383	4,040	53,848	252	1,057	740	89	283	4,074
3	69,275	5,785	56,723	317	721	700	109	410	4,510

4	70,353	8,849	55,139	363	644	678	168	349	4,163
5	68,317	7,917	53,636	492	431	1,054	176	611	4,000
6	70,883	12,356	50,345	690	584	1,417	436	380	4,675
7	67,115	4,426	55,987	248	852	577	81	345	4,599
8	67,508	4,857	54,084	784	451	1,997	97	516	4,722
9	66,424	4,393	55,008	274	1,157	850	139	384	4,219
10	69,582	6,789	53,688	537	2,684	898	107	360	4,519
11	69,918	5,099	56,506	545	584	2,103	124	435	4,522
12	65,685	9,344	48,844	722	675	955	251	349	4,545
13	69,847	6,682	53,598	1,133	543	2,511	204	466	4,710
14	72,380	9,298	54,226	988	676	1,490	225	395	5,082
15	71,816	9,166	55,594	494	635	1,163	185	365	4,214
16	69,904	6,771	50,969	798	381	5,934	232	420	4,399
17	70,957	5,334	59,328	259	736	598	125	367	4,210
18	69,173	11,694	52,137	275	464	755	107	378	3,363
19	74,847	12,577	52,990	942	747	2,226	715	386	4,264
20	74,615	12,356	53,482	836	654	1,946	420	356	4,565
21	69,454	22,917	37,831	1,169	727	2,015	1,225	346	3,224
22	68,566	36,479	26,048	743	531	939	1,118	258	2,450
23	69,116	6,710	56,033	223	969	680	87	366	4,048
24	69,705	13,504	49,274	573	511	1,512	169	424	3,738
25	71,577	13,394	50,821	608	546	1,339	442	359	4,068
26	80,686	9,878	57,294	1,209	430	6,329	341	332	4,873
27	67,894	10,066	45,388	1,487	197	5,490	298	358	4,610
28	69,308	15,517	39,049	2,042	302	7,037	442	368	4,551
29	70,371	26,016	36,975	844	322	2,147	248	350	3,469
30	79,745	13,595	44,564	2,440	336	12,868	442	428	5,072
31	76,396	4,899	57,371	774	736	7,349	157	439	4,671
32	70,294	6,993	56,868	299	555	946	187	378	4,068
33	81,133	6,016	50,299	1,556	242	16,906	201	485	5,428
34	71,518	12,655	42,570	1,880	308	8,699	345	391	4,670

35	70,810	8,972	49,408	1,414	251	5,075	614	375	4,701
36	73,447	5,734	54,195	2,158	647	4,844	150	554	5,165
37	71,144	8,331	53,284	698	221	3,264	430	327	4,589
38	70,632	4,286	54,946	1,234	202	4,657	164	406	4,737
39	70,673	7,943	56,439	360	423	1,320	76	383	3,729
40	70,408	6,791	55,762	726	440	1,577	194	374	4,544
41	68,569	5,623	54,100	889	335	2,239	195	392	4,796
42	72,984	5,880	55,346	1,545	317	3,887	122	536	5,351
43	73,248	7,619	48,137	8,364	417	2,677	239	517	5,278
44	70,337	11,445	43,291	5,634	550	3,035	689	446	5,247
45	66,616	6,382	45,598	3,768	413	5,008	294	369	4,784
46	68,302	6,905	44,632	2,841	404	7,905	404	458	4,753
47	67,702	11,239	35,318	6,677	606	8,571	912	332	4,047
48	68,169	10,173	41,094	2,756	582	8,409	566	372	4,217
49	67,738	15,410	38,919	3,559	536	3,899	874	331	4,210
50	67,891	13,869	41,745	2,745	493	4,109	558	320	4,052
51	75,526	8,972	46,572	2,829	381	11,432	508	299	4,533
52	69,675	11,057	52,489	379	465	1,097	118	287	3,783
53	81,896	7,868	67,398	366	487	951	90	374	4,362
54	81,098	7,689	66,406	336	390	1,256	126	462	4,433
55	72,034	4,892	59,985	207	1,405	479	88	430	4,548
56	66,010	9,022	49,225	507	1,798	743	99	372	4,244
57	67,965	25,276	38,330	432	612	514	108	228	2,465
58	64,069	4,393	51,895	425	2,461	471	531	311	3,582
59	70,814	10,870	51,226	285	4,000	485	222	282	3,444
60	63,581	11,855	47,006	532	750	515	68	258	2,597

¹American Indian and Alaska Native Alone, Not Latino

²Native Hawaiian and Pacific Islander Alone, Not Latino

Percent Change in Population from 2010 to 2020 by Race and Ethnicity at State House District Level

DISTRICT	Total Population	Hispanic or Latino Origin	White Alone, not Latino	African American Alone, not Latino	AIAN Alone, not Latino ¹	Asian Alone, not Latino	NHPI Alone, not Latino ²	Other Alone, not Latino	Two or More, not Latino
1	4.63%	35.66%	-1.16%	22.50%	-4.98%	16.23%	26.92%	312.50%	121.30%
2	2.50%	33.47%	-3.63%	38.46%	-4.26%	8.66%	15.58%	371.67%	125.58%
3	6.71%	29.65%	-0.67%	32.64%	-1.90%	28.91%	17.20%	561.29%	168.13%
4	9.52%	46.34%	-0.17%	48.16%	0.00%	39.79%	69.70%	571.15%	190.92%
5	8.57%	41.00%	-0.07%	23.31%	-12.22%	27.45%	38.58%	517.17%	136.83%
6	11.26%	34.89%	0.03%	28.01%	-4.89%	54.02%	48.81%	450.72%	162.20%
7	4.71%	43.33%	-2.63%	11.21%	-3.40%	24.62%	39.66%	270.97%	157.21%
8	7.23%	65.82%	-1.18%	52.23%	-11.74%	7.60%	19.75%	268.57%	115.32%
9	5.05%	28.49%	-0.47%	14.64%	-9.89%	23.73%	10.32%	509.52%	96.60%
10	8.47%	25.49%	1.13%	3.67%	15.34%	25.42%	8.08%	566.67%	132.82%
11	10.55%	71.63%	1.95%	39.74%	13.84%	13.43%	34.78%	372.83%	136.38%
12	4.30%	25.20%	-4.04%	18.95%	-10.00%	20.43%	32.11%	391.55%	106.31%
13	10.13%	43.48%	1.48%	39.53%	-0.18%	17.89%	53.38%	261.24%	113.90%
14	12.94%	40.45%	3.29%	54.38%	-1.17%	24.06%	24.31%	537.10%	131.21%
15	13.35%	43.92%	3.77%	58.84%	9.86%	45.92%	96.81%	314.77%	172.40%
16	10.13%	50.17%	-1.07%	26.27%	11.40%	45.19%	28.18%	281.82%	110.08%
17	10.50%	38.26%	3.71%	40.00%	-6.72%	20.81%	62.34%	634.00%	169.87%
18	9.04%	29.67%	0.33%	39.59%	2.20%	26.25%	5.94%	530.00%	222.13%
19	17.23%	49.41%	5.70%	13.22%	5.96%	55.66%	47.42%	315.05%	144.08%
20	15.37%	41.66%	4.73%	75.63%	5.31%	23.79%	52.73%	356.41%	145.03%
21	7.44%	31.59%	-7.82%	20.76%	-13.56%	3.44%	87.31%	332.50%	89.76%
22	6.47%	10.91%	-5.65%	43.16%	-9.69%	20.38%	62.50%	134.55%	101.98%
23	8.70%	30.24%	1.76%	17.37%	-1.12%	21.00%	11.54%	346.34%	173.33%
24	9.08%	26.77%	-0.13%	66.09%	-8.91%	17.76%	27.07%	332.65%	150.70%
25	10.37%	29.90%	0.36%	51.62%	8.33%	19.66%	70.00%	385.14%	163.81%
26	24.73%	52.86%	11.30%	68.15%	30.30%	80.57%	52.91%	249.47%	159.75%
27	4.76%	28.03%	-5.55%	29.42%	-17.57%	15.85%	-5.40%	97.79%	103.08%

28	7.43%	25.09%	-7.02%	30.23%	-17.03%	25.71%	87.29%	268.00%	102.99%
29	8.04%	16.34%	-3.26%	58.05%	-21.08%	23.68%	34.78%	288.89%	116.95%
30	23.25%	49.13%	2.02%	67.35%	3.38%	72.61%	81.89%	262.71%	119.66%
31	19.18%	73.05%	1.86%	126.98%	2.79%	295.11%	29.75%	608.06%	152.21%
32	9.14%	33.79%	1.42%	25.10%	9.47%	29.23%	27.21%	384.62%	189.33%
33	26.28%	86.48%	9.40%	76.22%	44.05%	46.28%	71.79%	225.50%	149.91%
34	10.62%	30.17%	-3.02%	29.39%	-0.96%	29.66%	54.71%	228.57%	110.65%
35	9.28%	23.01%	0.36%	23.17%	-23.71%	24.72%	18.99%	260.58%	123.43%
36	14.21%	82.32%	2.38%	30.16%	52.24%	31.56%	27.12%	354.10%	131.93%
37	9.86%	29.95%	0.37%	23.54%	-15.97%	44.55%	44.78%	214.42%	159.12%
38	9.39%	54.39%	-0.33%	28.94%	-21.40%	43.38%	3.14%	241.18%	146.08%
39	10.90%	41.18%	2.41%	79.10%	-10.57%	33.60%	-2.56%	498.44%	215.48%
40	9.12%	32.20%	0.49%	63.51%	-0.90%	40.30%	42.65%	450.00%	170.32%
41	7.19%	28.32%	-0.97%	30.74%	-22.45%	27.94%	36.36%	335.56%	157.16%
42	15.66%	66.95%	5.89%	20.23%	-24.16%	24.38%	9.91%	243.59%	140.82%
43	13.50%	32.05%	14.30%	-25.86%	-6.50%	44.47%	31.32%	169.27%	95.63%
44	10.42%	19.23%	6.95%	-13.85%	-22.86%	17.50%	-1.57%	160.82%	80.12%
45	5.72%	28.57%	-1.19%	1.62%	-9.83%	1.01%	-16.00%	197.58%	107.46%
46	8.01%	25.71%	-0.61%	27.40%	-18.38%	8.60%	-4.72%	269.35%	108.19%
47	7.53%	11.09%	-8.45%	43.44%	11.60%	39.05%	67.03%	181.36%	80.91%
48	9.02%	15.34%	-3.00%	37.87%	20.00%	31.49%	97.21%	300.00%	101.87%
49	7.26%	27.34%	-8.72%	49.35%	9.39%	32.48%	94.65%	248.42%	104.97%
50	7.40%	19.94%	-5.83%	65.96%	2.49%	50.57%	56.74%	272.09%	101.19%
51	18.25%	52.15%	0.97%	54.51%	-2.31%	61.24%	53.94%	176.85%	115.96%
52	9.62%	17.77%	3.11%	55.33%	1.75%	30.91%	4.42%	370.49%	143.59%
53	26.31%	58.60%	17.59%	100.00%	-6.17%	93.29%	7.14%	523.33%	256.96%
54	27.56%	36.79%	20.70%	15.46%	-9.93%	65.05%	82.61%	589.55%	236.60%
55	13.47%	35.81%	6.30%	42.76%	1.22%	46.93%	3.53%	877.27%	210.44%
56	4.47%	28.79%	-4.16%	29.34%	1.99%	19.07%	54.69%	520.00%	121.50%
57	8.40%	28.75%	-5.62%	24.86%	-0.33%	9.13%	24.14%	314.55%	181.07%
58	1.66%	23.43%	-4.85%	4.17%	6.31%	-4.85%	100.38%	298.72%	162.61%

59	11.94%	28.15%	6.04%	20.25%	-9.17%	31.44%	21.31%	354.84%	183.46%
60	1.12%	8.43%	-3.96%	29.76%	2.32%	-20.40%	134.48%	616.67%	127.01%

¹American Indian and Alaska Native Alone, Not Latino

²Native Hawaiian and Pacific Islander Alone, Not Latino

Variable definitions

District shapefiles were retrieved from the Redistricting Data Hub, All About Redistricting, and the U.S. Census. The list of variables below can be found in the P1 and P2 table of the PL 94-171. Data was retrieved from the Redistricting Data Hub processed legacy file of the PL 94-171.

Variable Name in Report	Census Variable Reference
Total Population	P0010001
Hispanic or Latino Origin	P0020002
White Alone, not Latino	P0020005
African American Alone, not Latino	P0020006
American Indian and Alaska Native Alone, not Latino	P0020007
Asian Alone, not Latino	P0020008
Native Hawaiian and Pacific Islander Alone, not Latino	P0020009
Other Alone, not Latino	P0020010
Two or More, not Latino	P0020011