

HAYSTAQ DNA

New Mexico

Overview	1
Congressional	2
Total Population	3
Population by Race and Ethnicity	5
State Senate	9
Total Population	10
Population by Race and Ethnicity	13
Albuquerque	16
Farmington	20
Santa Fe	23
State House	31
Total Population	32
Population by Race and Ethnicity	36
Albuquerque	39
Farmington	43
Las Cruces	47
Santa Fe	51
Variable definitions	62

Overview

The population of New Mexico grew by 58,343, an increase of 2.83%. All three congressional districts saw growth with District 2 (4.03%) growing the most. New Mexico will continue to have 3 congressional seats after this redistricting cycle.

The White population declined by 60,858 people, a decrease of -7.3%. All three congressional districts saw a decline in this population. The overall share of population decreased from 40.49% in 2010 to 36.5% in 2020.

The Hispanic population grew by 57,408 people, an increase of 6.02%. All three districts saw growth of this population with District 2 in the southern half of the state (10.32%) seeing the highest. The overall share of population increased from 46.3% in 2010 to 47.74% in 2020.

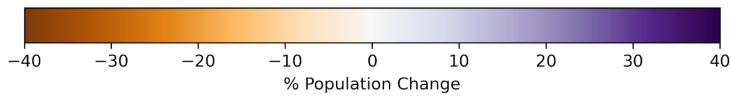
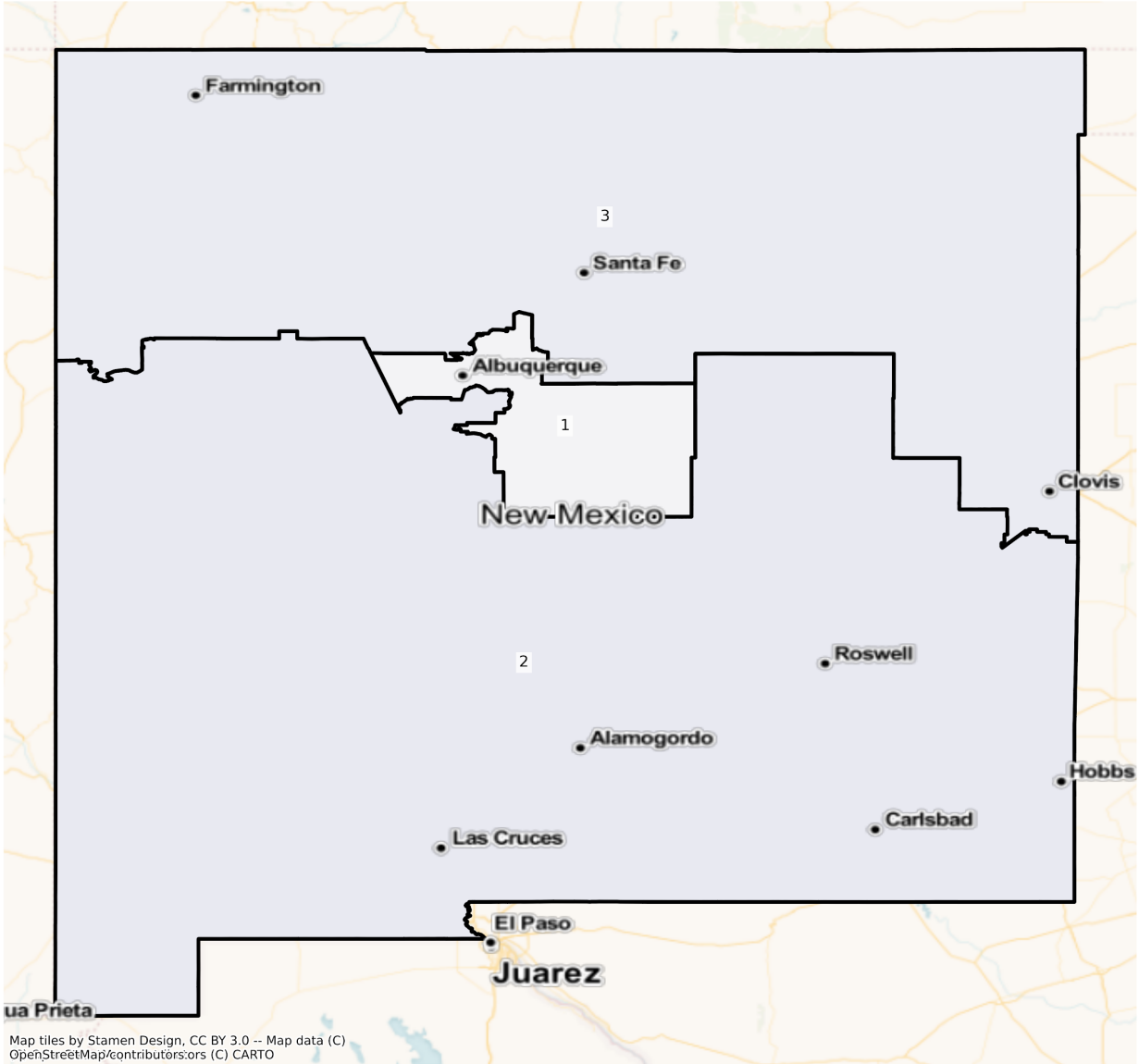
The American Indian and Alaska Native population grew by 13,242, an increase of 7.55%. All three districts saw growth of this population with District 1 in the Albuquerque area (16.91%) seeing the highest growth. The overall share of population increased from 8.52% in 2010 to 8.91% in 2020.

Congressional

The charts below display the percent change in population from 2010 to 2020 for the listed group. Please note that the color bars are fixed to be from -40% to 40% and these maps are displayed in brown to purple. If the percent change in population was outside of this range, the color scheme changes to red to green to indicate a change.

Total Population

NM Congressional Districts
Population % Change from 2010 to 2020
Total Population



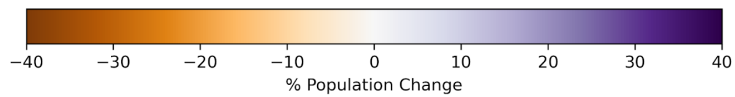
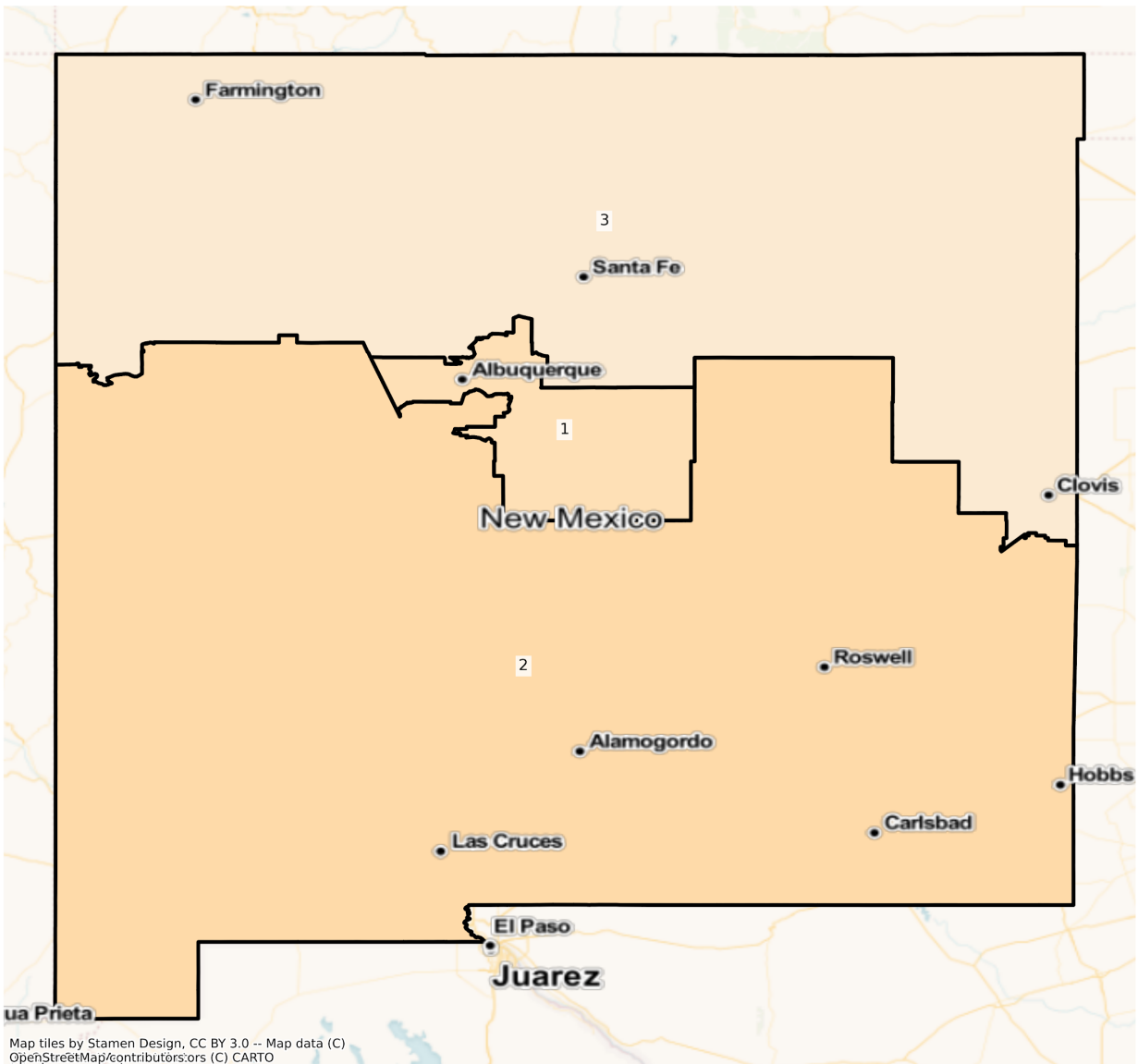
Total Population from 2010 to 2020 at Congressional District Level

DISTRICT	Total Population 2010	Total Population 2020	Total Population % Change
----------	--------------------------	--------------------------	------------------------------

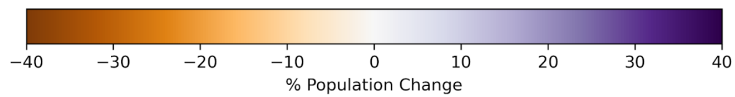
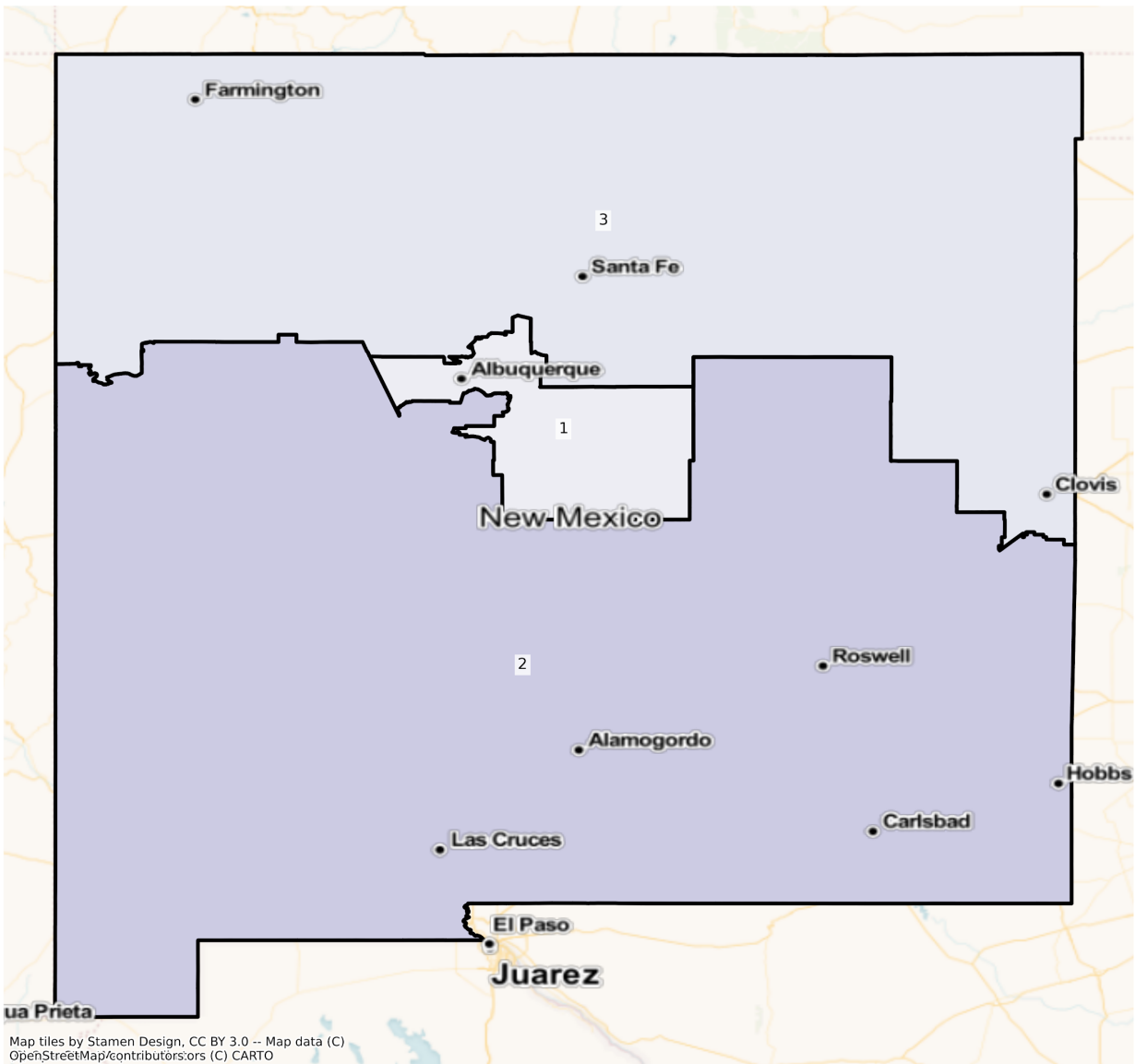
1	686,387	694,560	1.19%
2	686,393	714,021	4.03%
3	686,399	708,941	3.28%

Population by Race and Ethnicity

NM Congressional Districts
Population % Change from 2010 to 2020
Ethnicity: Not Latino White alone



NM Congressional Districts
Population % Change from 2010 to 2020
Ethnicity: Hispanic or Latino



			Latino	not Latino	Latino ¹	Latino	Latino ²	Latino	
1	686,387	329,664	288,229	16,016	24,773	14,313	463	1,493	11,436
2	686,393	355,689	275,607	10,725	30,590	4,844	407	994	7,537
3	686,399	268,050	269,974	8,721	120,005	7,148	376	1,263	10,862

¹American Indian and Alaska Native Alone, Not Latino

²Native Hawaiian and Pacific Islander Alone, Not Latino

2020 Population by Race and Ethnicity at Congressional District Level

DISTRICT	Total Population	Hispanic or Latino Origin	White Alone, not Latino	African American Alone, not Latino	AIAN Alone, not Latino ¹	Asian Alone, not Latino	NHPI Alone, not Latino ²	Other Alone, not Latino	Two or More, not Latino
1	694,560	338,297	265,101	17,353	28,962	18,675	540	3,667	21,965
2	714,021	392,388	250,467	11,615	31,989	6,877	456	3,348	16,881
3	708,941	280,126	257,384	9,362	127,659	9,709	455	3,325	20,921

¹American Indian and Alaska Native Alone, Not Latino

²Native Hawaiian and Pacific Islander Alone, Not Latino

Percent Change in Population from 2010 to 2020 by Race and Ethnicity at Congressional District Level

DISTRICT	Total Population	Hispanic or Latino Origin	White Alone, not Latino	African American Alone, not Latino	AIAN Alone, not Latino ¹	Asian Alone, not Latino	NHPI Alone, not Latino ²	Other Alone, not Latino	Two or More, not Latino
1	1.19%	2.62%	-8.02%	8.35%	16.91%	30.48%	16.63%	145.61%	92.07%
2	4.03%	10.32%	-9.12%	8.30%	4.57%	41.97%	12.04%	236.82%	123.98%
3	3.28%	4.51%	-4.66%	7.35%	6.38%	35.83%	21.01%	163.26%	92.61%

¹American Indian and Alaska Native Alone, Not Latino

²Native Hawaiian and Pacific Islander Alone, Not Latino

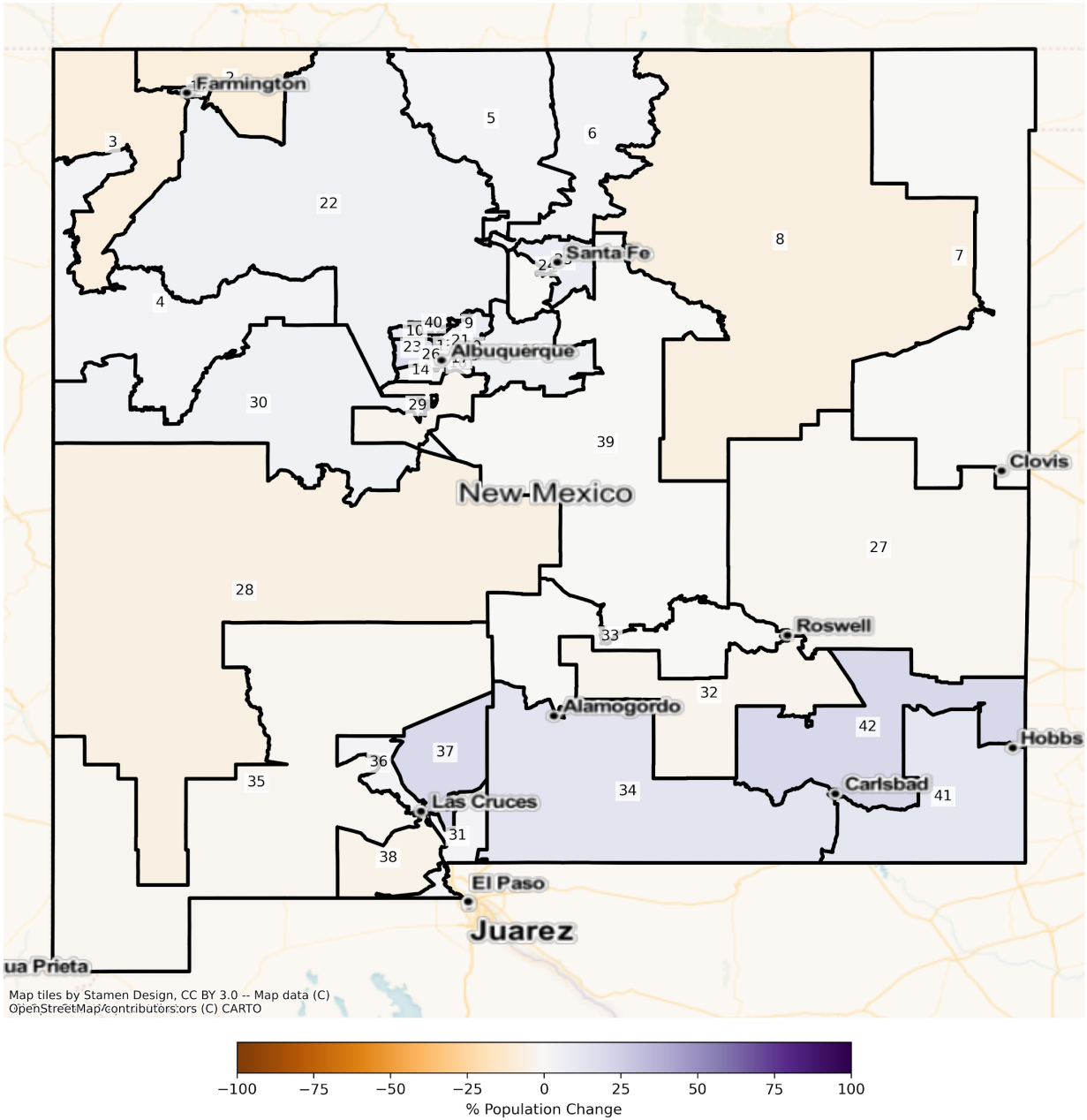
State Senate

The charts below display the percent change in population from 2010 to 2020 for the listed group. Please note that the color bars are fixed to be from -100% to 100% and these maps are

displayed in brown to purple. If the percent change in population was outside of this range, the color scheme changes to red to green to indicate a change.

Total Population

NM State Senate Districts
Population % Change from 2010 to 2020
Total Population



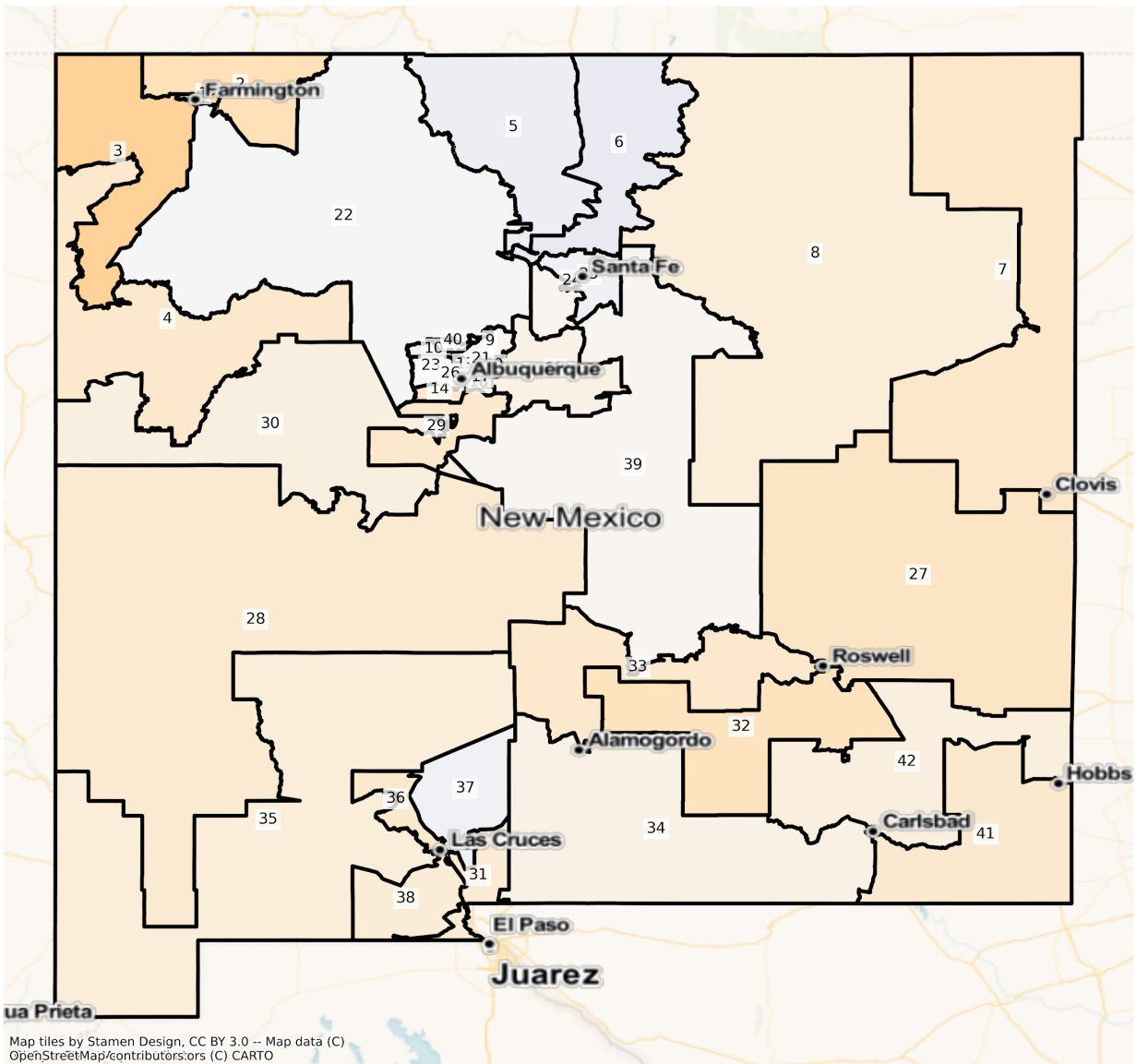
Total Population from 2010 to 2020 at State Senate District Level

DISTRICT	Total Population 2010	Total Population 2020	Total Population % Change
1	47,857	47,051	-1.68%
2	47,774	43,831	-8.25%
3	48,432	44,767	-7.57%
4	48,950	50,262	2.68%
5	49,403	50,820	2.87%
6	49,967	51,896	3.86%
7	49,004	48,869	-0.28%
8	48,137	44,785	-6.96%
9	48,942	52,727	7.73%
10	48,723	52,920	8.61%
11	48,958	46,812	-4.38%
12	48,836	48,326	-1.04%
13	48,945	49,219	0.56%
14	48,819	50,497	3.44%
15	49,229	49,031	-0.40%
16	48,382	47,340	-2.15%
17	48,110	46,380	-3.60%
18	49,450	49,153	-0.60%
19	49,455	51,755	4.65%
20	49,877	48,902	-1.95%
21	48,167	50,384	4.60%
22	46,784	49,046	4.83%
23	48,189	56,695	17.65%
24	49,690	54,143	8.96%
25	49,805	53,582	7.58%
26	48,495	50,214	3.54%
27	48,643	47,504	-2.34%
28	49,131	46,365	-5.63%
29	51,053	49,224	-3.58%
30	47,459	49,638	4.59%

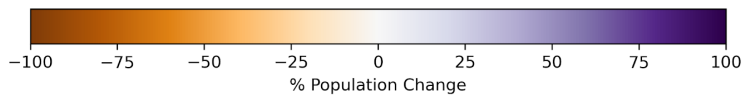
31	48,856	50,378	3.12%
32	49,728	47,974	-3.53%
33	49,497	49,469	-0.06%
34	49,967	56,245	12.56%
35	49,371	48,587	-1.59%
36	49,914	51,123	2.42%
37	49,843	59,850	20.08%
38	49,350	47,274	-4.21%
39	48,521	48,478	-0.09%
40	49,722	60,004	20.68%
41	49,976	55,805	11.66%
42	49,768	60,197	20.96%

Population by Race and Ethnicity

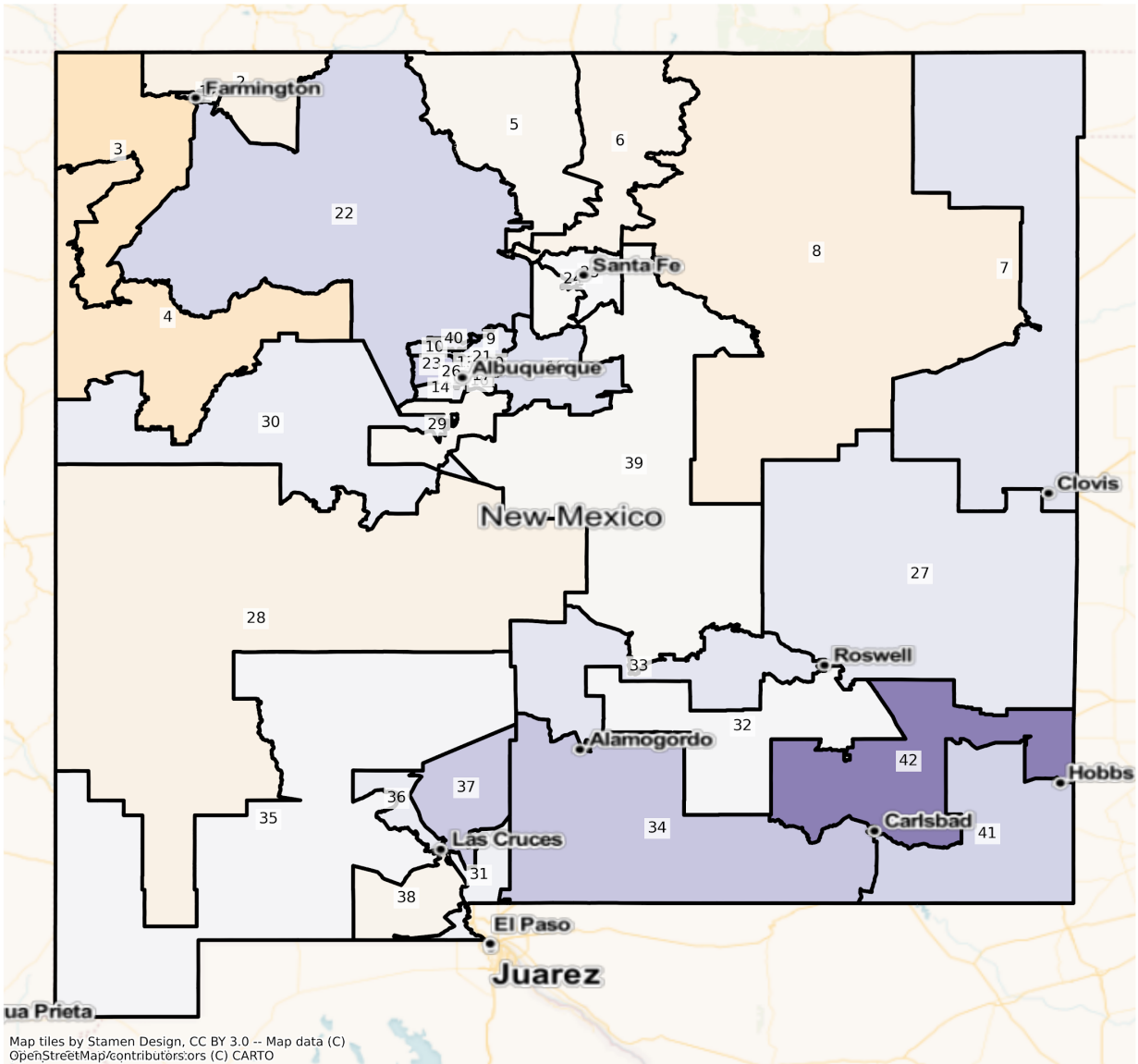
NM State Senate Districts
Population % Change from 2010 to 2020
Ethnicity: Not Latino White alone



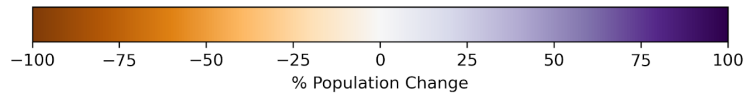
Map tiles by Stamen Design, CC BY 3.0 -- Map data (C)
OpenStreetMap/contributors/sors (C) CARTO



NM State Senate Districts
Population % Change from 2010 to 2020
Ethnicity: Hispanic or Latino

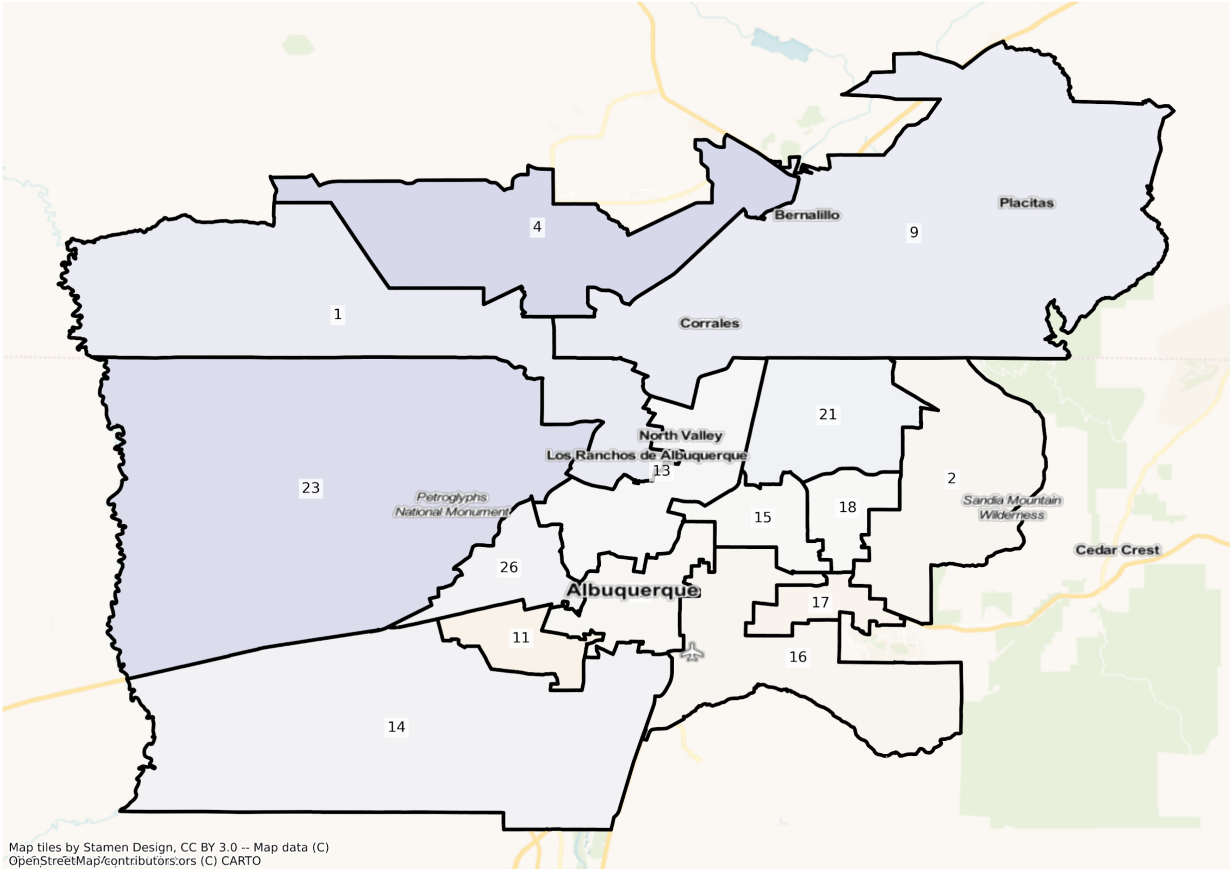


Map tiles by Stamen Design, CC BY 3.0 -- Map data (C)
OpenStreetMap/contributors/sors (C) CARTO

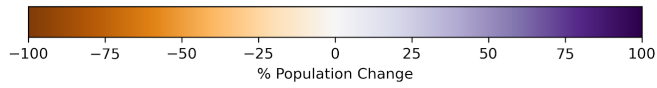


Albuquerque

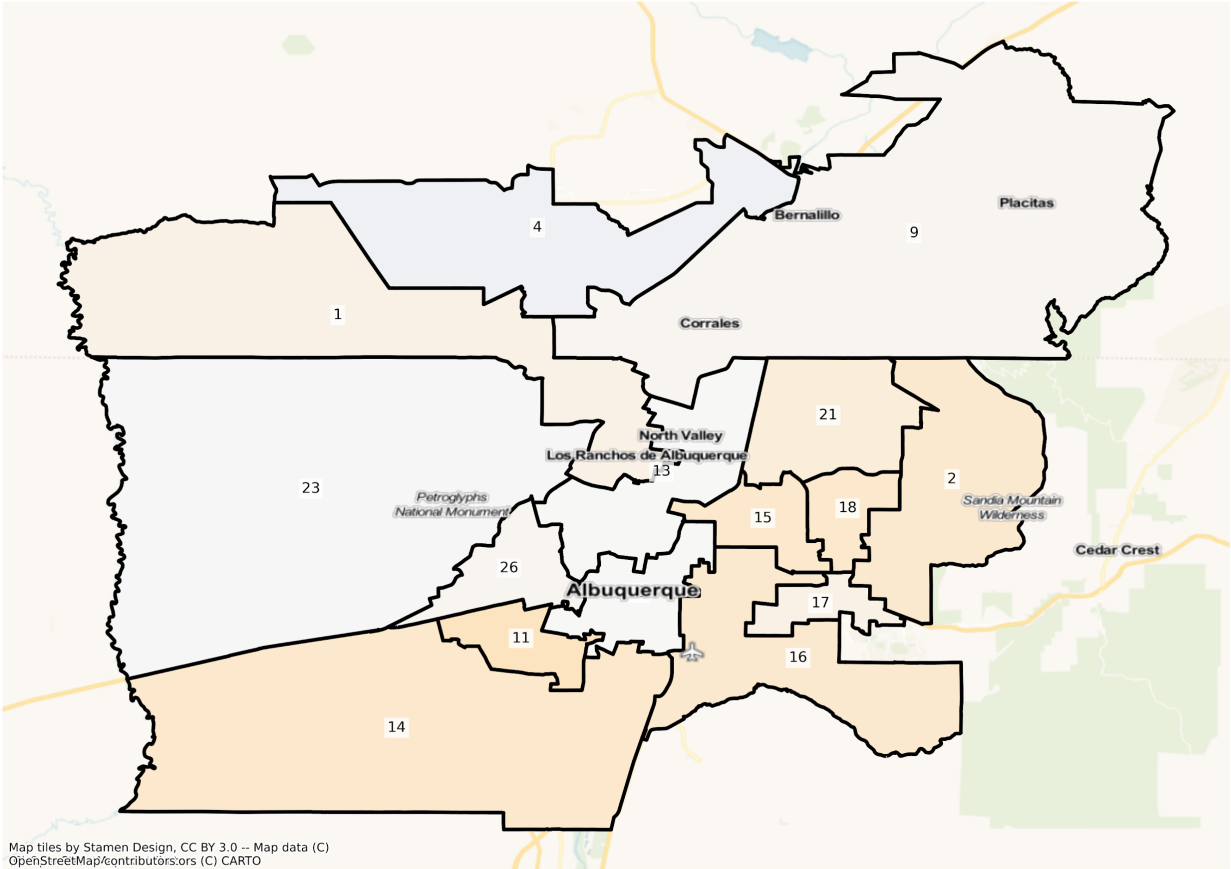
NM Albuquerque State Senate Districts
Population % Change from 2010 to 2020
Total Population



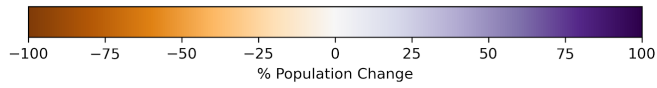
Map tiles by Stamen Design, CC BY 3.0 -- Map data (C) OpenStreetMap/contributors; ors (C) CARTO



NM Albuquerque State Senate Districts
Population % Change from 2010 to 2020
Ethnicity: Not Latino White alone

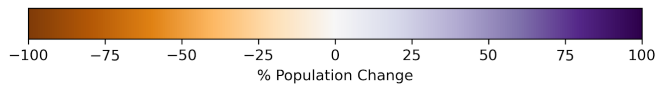
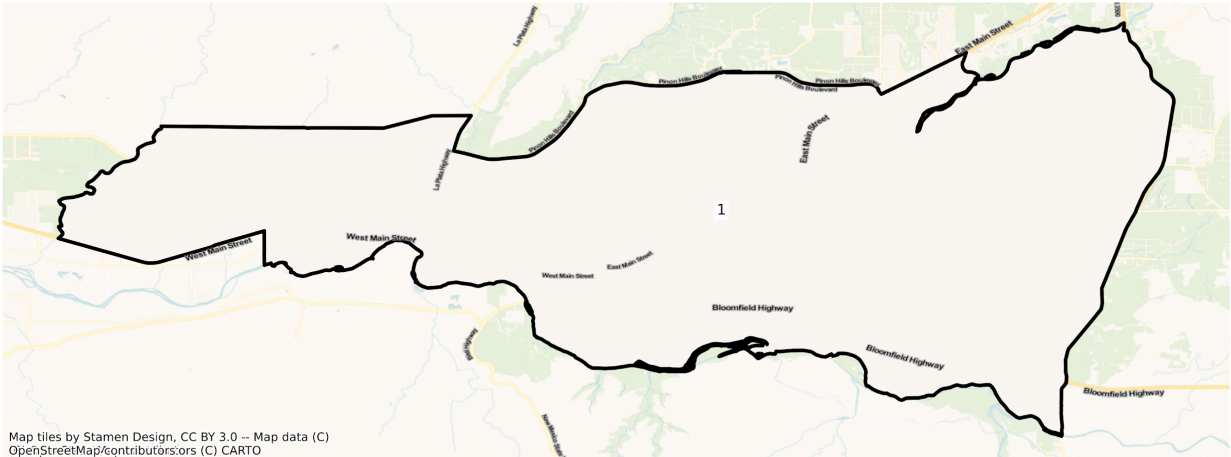


Map tiles by Stamen Design, CC BY 3.0 -- Map data (C) OpenStreetMap/contributors; ors (C) CARTO

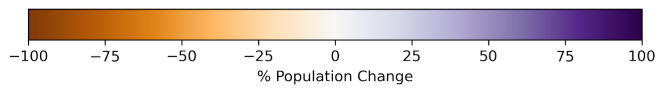
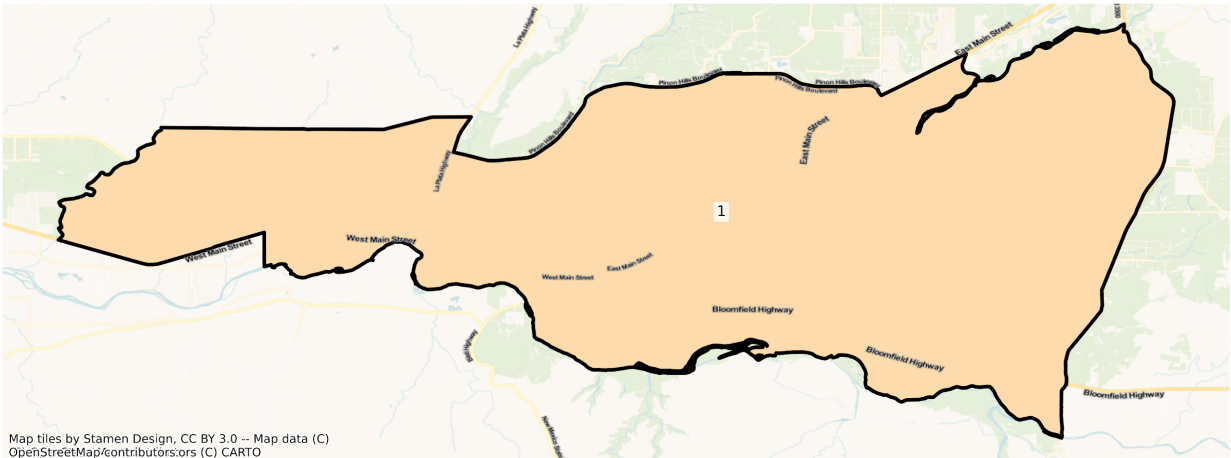


Farmington

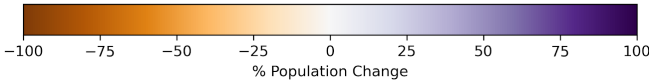
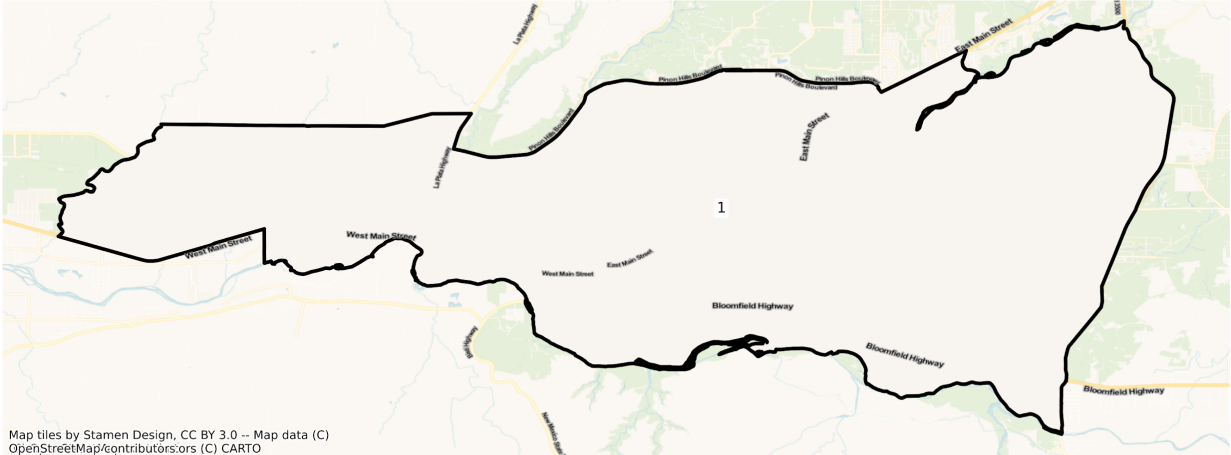
NM Farmington State Senate Districts
Population % Change from 2010 to 2020
Total Population



NM Farmington State Senate Districts
Population % Change from 2010 to 2020
Ethnicity: Not Latino White alone

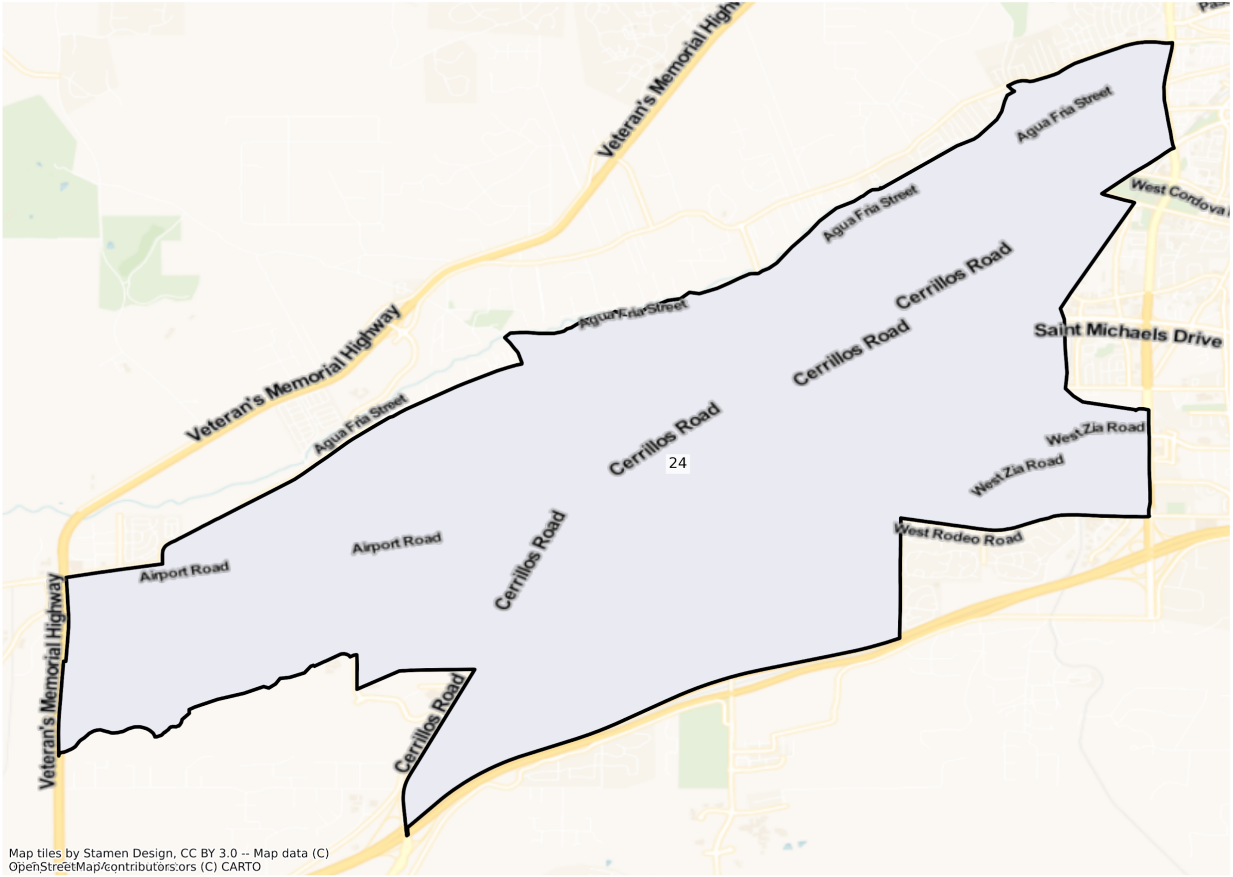


NM Farmington State Senate Districts
Population % Change from 2010 to 2020
Ethnicity: Hispanic or Latino

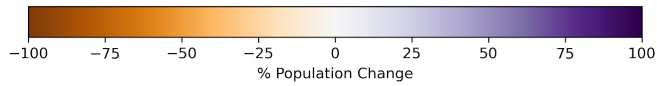


Santa Fe

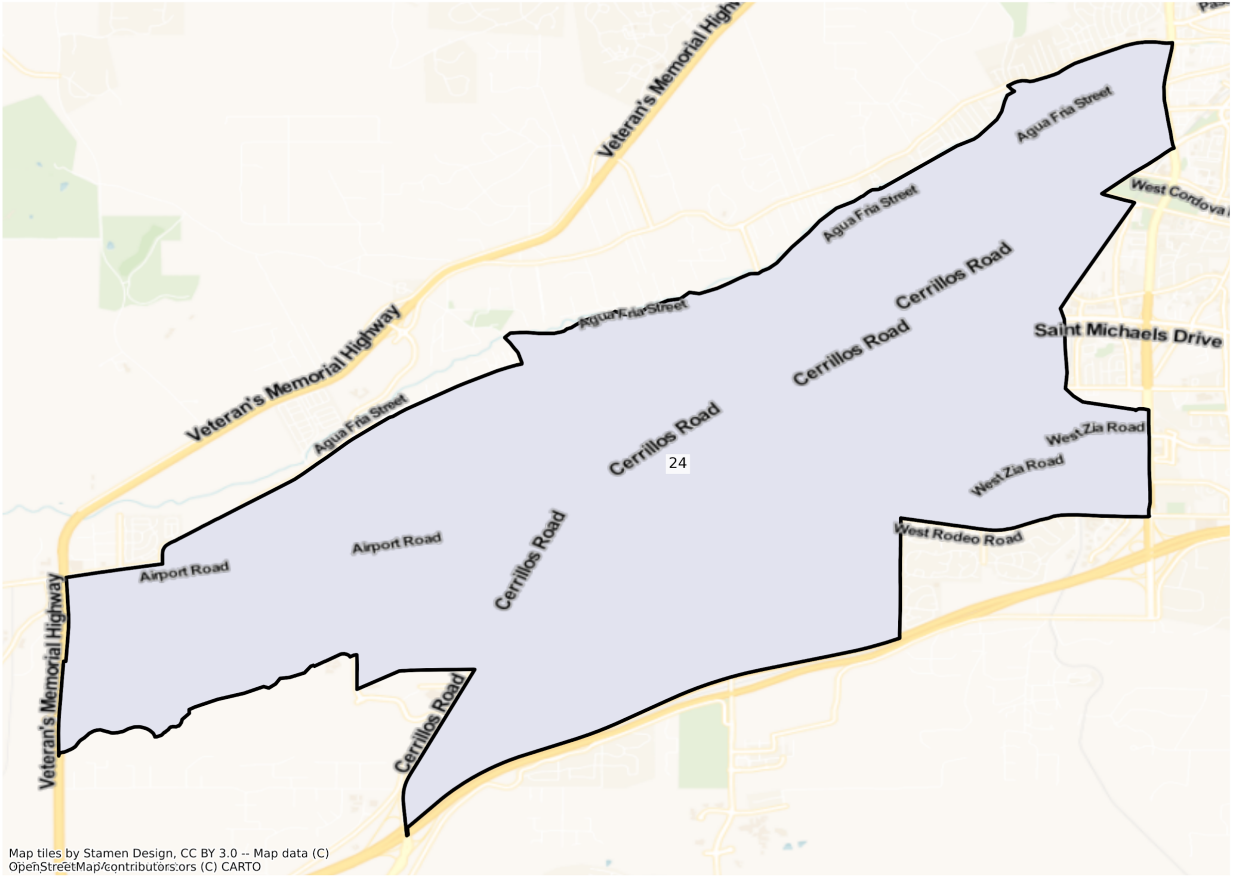
NM Santa Fe State Senate Districts
Population % Change from 2010 to 2020
Total Population



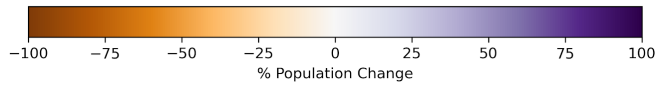
Map tiles by Stamen Design, CC BY 3.0 -- Map data (C)
OpenStreetMap/contributors,ors (C) CARTO



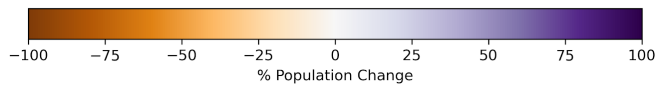
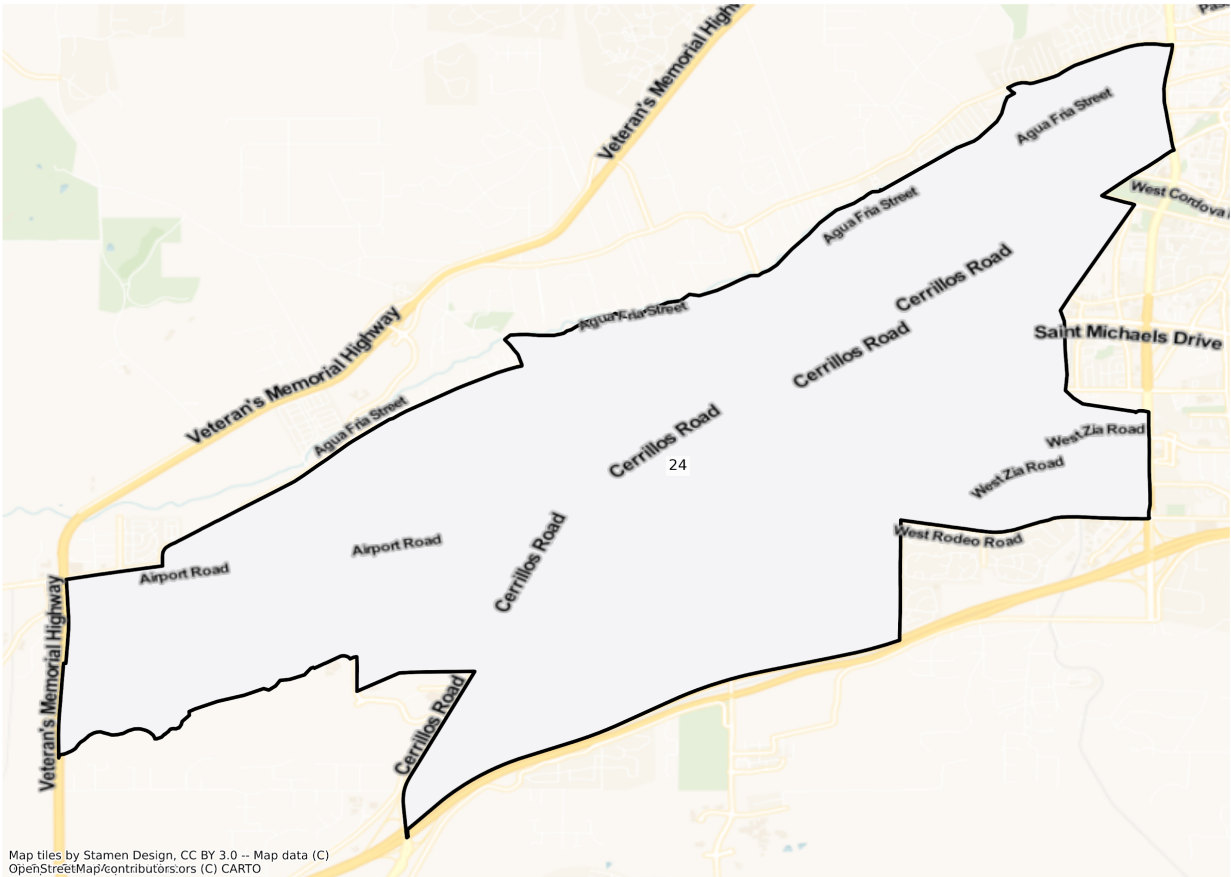
NM Santa Fe State Senate Districts
Population % Change from 2010 to 2020
Ethnicity: Not Latino White alone



Map tiles by Stamen Design, CC BY 3.0 -- Map data (C)
OpenStreetMap/contributors.ors (C) CARTO



NM Santa Fe State Senate Districts
 Population % Change from 2010 to 2020
 Ethnicity: Hispanic or Latino



2010 Population by Race and Ethnicity at State Senate District Level

DISTRICT	Total Population	Hispanic or Latino Origin	White Alone, not Latino	African American Alone, not Latino	AIAN Alone, not Latino ¹	Asian Alone, not Latino	NHPI Alone, not Latino ²	Other Alone, not Latino	Two or More, not Latino
1	47,857	11,227	23,380	391	11,483	242	26	41	1,067
2	47,774	12,157	29,086	183	5,300	148	17	74	809
3	48,432	6,404	5,101	169	35,531	211	24	12	980
4	48,950	7,073	7,090	225	33,266	384	17	47	848

5	49,403	30,514	14,057	179	2,900	1,050	14	214	475
6	49,967	28,053	17,738	154	2,884	389	10	128	611
7	49,004	18,566	26,776	1,821	324	547	22	73	875
8	48,137	31,518	14,935	435	437	324	29	73	386
9	48,942	18,222	26,743	821	1,451	838	34	120	713
10	48,723	20,299	22,994	1,309	2,003	941	42	105	1,030
11	48,958	40,754	5,279	973	1,150	247	18	102	435
12	48,836	29,912	13,975	1,360	1,835	825	22	131	776
13	48,945	28,450	17,177	526	1,534	547	23	119	569
14	48,819	36,961	8,809	992	1,214	266	18	117	442
15	49,229	18,846	24,022	1,417	2,729	1,157	36	100	922
16	48,382	15,035	27,062	1,589	1,960	1,326	38	115	1,257
17	48,110	26,883	13,547	2,123	3,061	1,438	51	104	903
18	49,450	13,229	31,024	1,202	1,464	1,346	43	82	1,060
19	49,455	13,037	33,222	556	765	964	38	91	782
20	49,877	13,242	31,056	1,321	1,428	1,595	24	88	1,123
21	48,167	12,051	30,820	711	912	2,646	30	95	902
22	46,784	7,607	7,366	340	30,628	221	19	40	563
23	48,189	21,753	21,901	1,245	1,276	833	53	80	1,048
24	49,690	32,890	14,482	344	706	574	22	124	548
25	49,805	13,744	33,448	328	803	649	13	135	685
26	48,495	34,164	9,646	1,242	1,861	685	44	185	668
27	48,643	19,420	26,128	1,539	340	434	16	44	722
28	49,131	23,363	23,642	339	767	316	26	131	547
29	51,053	30,788	15,469	406	3,630	161	25	65	509
30	47,459	19,450	14,208	519	12,415	252	22	65	528
31	48,856	39,344	8,397	409	124	296	31	28	227
32	49,728	29,554	15,003	919	3,479	175	26	91	481
33	49,497	16,992	29,408	989	764	391	52	55	846
34	49,967	19,777	26,875	1,313	437	563	89	76	837
35	49,371	25,332	22,520	334	383	241	8	62	491

36	49,914	32,129	16,062	577	366	250	18	95	417
37	49,843	26,719	20,412	929	348	686	35	79	635
38	49,350	32,520	14,054	788	568	735	41	110	534
39	48,521	26,961	19,637	380	699	264	19	58	503
40	49,722	19,215	25,860	1,222	1,432	665	81	100	1,147
41	49,976	30,419	16,799	1,787	340	120	23	55	433
42	49,768	18,829	28,600	1,056	371	363	7	41	501

¹American Indian and Alaska Native Alone, Not Latino

²Native Hawaiian and Pacific Islander Alone, Not Latino

2020 Population by Race and Ethnicity at State Senate District Level

DISTRICT	Total Population	Hispanic or Latino Origin	White Alone, not Latino	African American Alone, not Latino	AIAN Alone, not Latino ¹	Asian Alone, not Latino	NHPI Alone, not Latino ²	Other Alone, not Latino	Two or More, not Latino
1	47,051	10,992	18,101	363	15,096	445	29	194	1,831
2	43,831	11,522	23,522	150	6,455	241	25	247	1,669
3	44,767	5,341	3,721	166	34,056	426	25	55	977
4	50,262	6,055	6,193	235	35,852	662	16	94	1,155
5	50,820	29,587	14,961	274	3,347	1,275	19	265	1,092
6	51,896	26,878	19,492	188	3,237	386	15	338	1,362
7	48,869	20,909	23,208	1,819	287	656	36	223	1,731
8	44,785	29,078	13,574	353	457	264	15	177	867
9	52,727	20,819	26,155	935	1,801	1,052	42	260	1,663
10	52,920	23,398	21,903	1,472	2,625	1,331	63	298	1,830
11	46,812	39,371	4,403	867	1,193	270	22	148	538
12	48,326	27,786	13,962	1,420	2,396	1,088	39	276	1,359
13	49,219	27,215	17,135	802	1,628	753	33	246	1,407
14	50,497	39,244	7,659	963	1,203	407	26	207	788
15	49,031	19,551	20,873	1,649	3,340	1,500	48	251	1,819
16	47,340	15,444	23,764	1,776	2,140	1,573	59	379	2,205
17	46,380	24,791	12,853	2,204	3,407	1,346	51	209	1,519

18	49,153	14,889	26,914	1,304	2,022	1,698	34	281	2,011
19	51,755	15,211	31,451	643	747	1,227	39	381	2,056
20	48,902	14,279	27,349	1,249	1,736	1,850	31	268	2,140
21	50,384	14,203	27,958	818	1,065	4,058	38	266	1,978
22	49,046	9,227	7,473	411	30,428	412	35	133	927
23	56,695	27,730	21,966	1,471	1,792	1,363	57	271	2,045
24	54,143	33,648	16,440	535	941	913	18	344	1,304
25	53,582	13,875	35,193	403	959	954	25	392	1,781
26	50,214	34,748	9,488	1,442	2,305	888	40	197	1,106
27	47,504	21,417	22,117	1,446	342	547	32	191	1,412
28	46,365	22,091	21,035	396	818	483	26	279	1,237
29	49,224	30,155	13,534	372	3,602	129	20	287	1,125
30	49,638	20,951	13,268	535	13,098	380	13	331	1,062
31	50,378	41,405	7,507	359	133	278	16	168	512
32	47,974	29,848	12,375	705	3,727	271	21	190	837
33	49,469	19,061	25,716	1,097	876	549	66	252	1,852
34	56,245	25,346	25,560	1,550	445	868	108	337	2,031
35	48,587	25,759	20,447	393	312	342	22	139	1,173
36	51,123	34,681	14,052	641	397	273	23	171	885
37	59,850	33,950	21,319	1,199	431	1,157	44	215	1,535
38	47,274	31,407	12,660	869	445	691	30	240	932
39	48,478	26,624	19,178	324	587	324	21	259	1,161
40	60,004	25,654	27,259	1,436	2,056	925	86	275	2,313
41	55,805	37,543	14,708	1,719	311	309	22	236	957
42	60,197	29,128	26,506	1,377	515	697	21	370	1,583

¹American Indian and Alaska Native Alone, Not Latino

²Native Hawaiian and Pacific Islander Alone, Not Latino

Percent Change in Population from 2010 to 2020 by Race and Ethnicity at State Senate District Level

DISTRICT	Total Population	Hispanic or Latino Origin	White Alone, not Latino	African American Alone, not	AIAN Alone, not Latino ¹	Asian Alone, not Latino	NHPI Alone, not Latino ²	Other Alone, not Latino	Two or More, not Latino
----------	------------------	---------------------------	-------------------------	-----------------------------	-------------------------------------	-------------------------	-------------------------------------	-------------------------	-------------------------

				Latino					
1	-1.68%	-2.09%	-22.58%	-7.16%	31.46%	83.88%	11.54%	373.17%	71.60%
2	-8.25%	-5.22%	-19.13%	-18.03%	21.79%	62.84%	47.06%	233.78%	106.30%
3	-7.57%	-16.60%	-27.05%	-1.78%	-4.15%	101.90%	4.17%	358.33%	-0.31%
4	2.68%	-14.39%	-12.65%	4.44%	7.77%	72.40%	-5.88%	100.00%	36.20%
5	2.87%	-3.04%	6.43%	53.07%	15.41%	21.43%	35.71%	23.83%	129.89%
6	3.86%	-4.19%	9.89%	22.08%	12.24%	-0.77%	50.00%	164.06%	122.91%
7	-0.28%	12.62%	-13.33%	-0.11%	-11.42%	19.93%	63.64%	205.48%	97.83%
8	-6.96%	-7.74%	-9.11%	-18.85%	4.58%	-18.52%	-48.28%	142.47%	124.61%
9	7.73%	14.25%	-2.20%	13.89%	24.12%	25.54%	23.53%	116.67%	133.24%
10	8.61%	15.27%	-4.74%	12.45%	31.05%	41.45%	50.00%	183.81%	77.67%
11	-4.38%	-3.39%	-16.59%	-10.89%	3.74%	9.31%	22.22%	45.10%	23.68%
12	-1.04%	-7.11%	-0.09%	4.41%	30.57%	31.88%	77.27%	110.69%	75.13%
13	0.56%	-4.34%	-0.24%	52.47%	6.13%	37.66%	43.48%	106.72%	147.28%
14	3.44%	6.18%	-13.05%	-2.92%	-0.91%	53.01%	44.44%	76.92%	78.28%
15	-0.40%	3.74%	-13.11%	16.37%	22.39%	29.65%	33.33%	151.00%	97.29%
16	-2.15%	2.72%	-12.19%	11.77%	9.18%	18.63%	55.26%	229.57%	75.42%
17	-3.60%	-7.78%	-5.12%	3.82%	11.30%	-6.40%	0.00%	100.96%	68.22%
18	-0.60%	12.55%	-13.25%	8.49%	38.11%	26.15%	-20.93%	242.68%	89.72%
19	4.65%	16.68%	-5.33%	15.65%	-2.35%	27.28%	2.63%	318.68%	162.92%
20	-1.95%	7.83%	-11.94%	-5.45%	21.57%	15.99%	29.17%	204.55%	90.56%
21	4.60%	17.86%	-9.29%	15.05%	16.78%	53.36%	26.67%	180.00%	119.29%
22	4.83%	21.30%	1.45%	20.88%	-0.65%	86.43%	84.21%	232.50%	64.65%
23	17.65%	27.48%	0.30%	18.15%	40.44%	63.63%	7.55%	238.75%	95.13%
24	8.96%	2.30%	13.52%	55.52%	33.29%	59.06%	-18.18%	177.42%	137.96%
25	7.58%	0.95%	5.22%	22.87%	19.43%	47.00%	92.31%	190.37%	160.00%
26	3.54%	1.71%	-1.64%	16.10%	23.86%	29.64%	-9.09%	6.49%	65.57%
27	-2.34%	10.28%	-15.35%	-6.04%	0.59%	26.04%	100.00%	334.09%	95.57%
28	-5.63%	-5.44%	-11.03%	16.81%	6.65%	52.85%	0.00%	112.98%	126.14%
29	-3.58%	-2.06%	-12.51%	-8.37%	-0.77%	-19.88%	-20.00%	341.54%	121.02%
30	4.59%	7.72%	-6.62%	3.08%	5.50%	50.79%	-40.91%	409.23%	101.14%

31	3.12%	5.24%	-10.60%	-12.22%	7.26%	-6.08%	-48.39%	500.00%	125.55%
32	-3.53%	0.99%	-17.52%	-23.29%	7.13%	54.86%	-19.23%	108.79%	74.01%
33	-0.06%	12.18%	-12.55%	10.92%	14.66%	40.41%	26.92%	358.18%	118.91%
34	12.56%	28.16%	-4.89%	18.05%	1.83%	54.17%	21.35%	343.42%	142.65%
35	-1.59%	1.69%	-9.21%	17.66%	-18.54%	41.91%	175.00%	124.19%	138.90%
36	2.42%	7.94%	-12.51%	11.09%	8.47%	9.20%	27.78%	80.00%	112.23%
37	20.08%	27.06%	4.44%	29.06%	23.85%	68.66%	25.71%	172.15%	141.73%
38	-4.21%	-3.42%	-9.92%	10.28%	-21.65%	-5.99%	-26.83%	118.18%	74.53%
39	-0.09%	-1.25%	-2.34%	-14.74%	-16.02%	22.73%	10.53%	346.55%	130.82%
40	20.68%	33.51%	5.41%	17.51%	43.58%	39.10%	6.17%	175.00%	101.66%
41	11.66%	23.42%	-12.45%	-3.81%	-8.53%	157.50%	-4.35%	329.09%	121.02%
42	20.96%	54.70%	-7.32%	30.40%	38.81%	92.01%	200.00%	802.44%	215.97%

¹American Indian and Alaska Native Alone, Not Latino

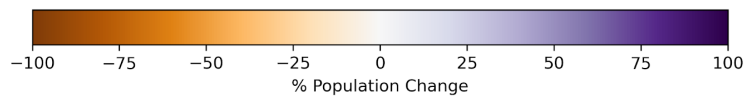
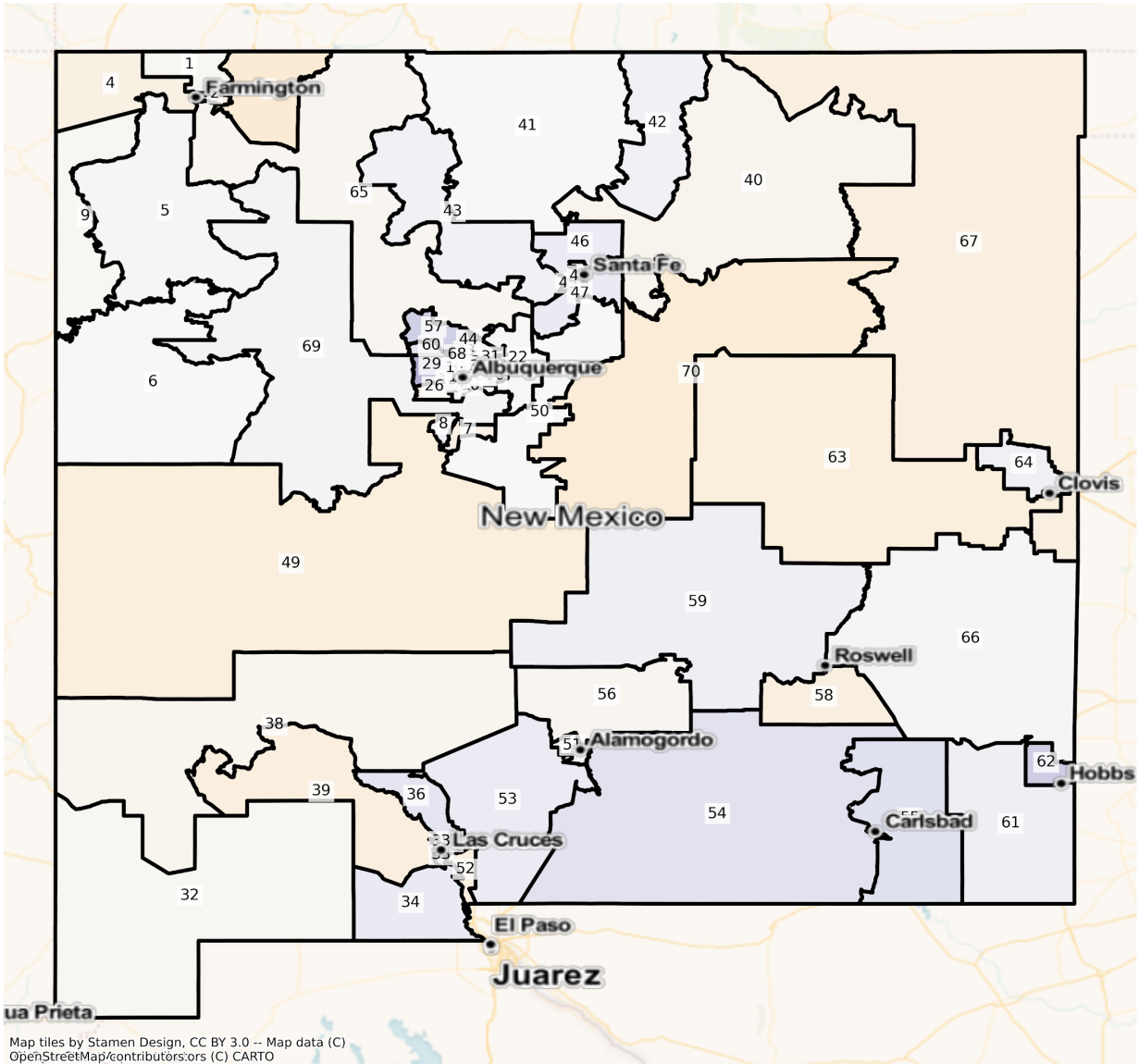
²Native Hawaiian and Pacific Islander Alone, Not Latino

State House

The charts below display the percent change in population from 2010 to 2020 for the listed group. Please note that the color bars are fixed to be from -100% to 100% and these maps are displayed in brown to purple. If the percent change in population was outside of this range, the color scheme changes to red to green to indicate a change.

Total Population

NM State House Districts
Population % Change from 2010 to 2020
Total Population



Total Population from 2010 to 2020 at State House District Level

DISTRICT	Total Population 2010	Total Population 2020	Total Population % Change
----------	--------------------------	--------------------------	------------------------------

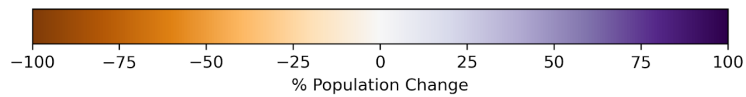
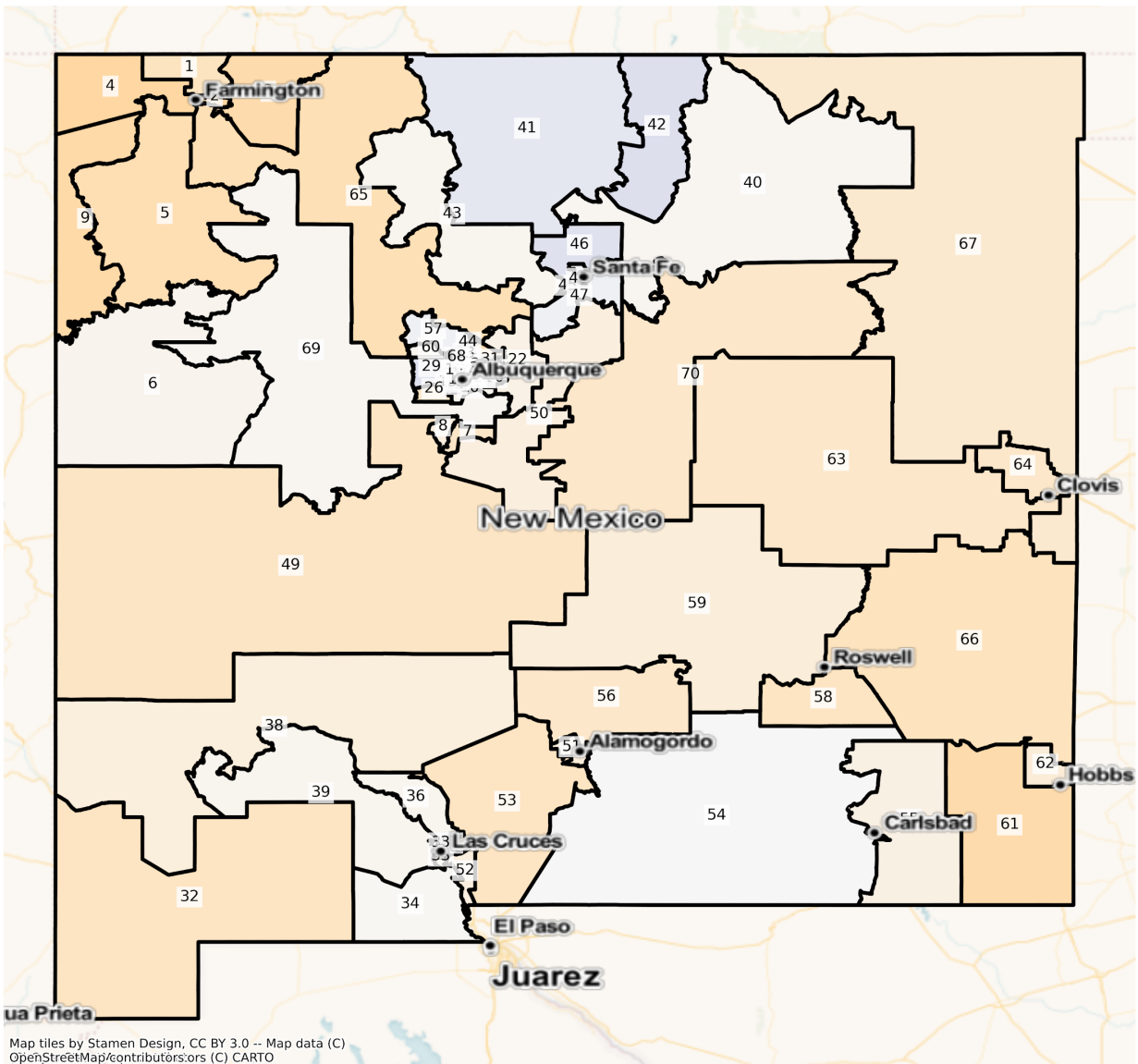
1	29,636	29,351	-0.96%
2	28,980	27,273	-5.89%
3	28,852	25,740	-10.79%
4	29,914	28,067	-6.17%
5	28,673	28,922	0.87%
6	29,513	29,387	-0.43%
7	29,184	27,814	-4.69%
8	29,558	31,317	5.95%
9	28,085	27,830	-0.91%
10	29,686	29,415	-0.91%
11	29,464	29,830	1.24%
12	29,595	29,083	-1.73%
13	29,571	32,761	10.79%
14	29,560	28,085	-4.99%
15	29,629	31,898	7.66%
16	29,421	30,468	3.56%
17	29,603	29,362	-0.81%
18	29,649	28,293	-4.57%
19	29,695	28,674	-3.44%
20	29,921	31,295	4.59%
21	29,497	29,196	-1.02%
22	29,742	29,916	0.59%
23	29,440	30,453	3.44%
24	29,650	29,306	-1.16%
25	29,179	28,496	-2.34%
26	29,605	28,164	-4.87%
27	29,807	29,194	-2.06%
28	29,804	29,056	-2.51%
29	29,560	40,733	37.80%
30	29,226	29,207	-0.07%
31	29,672	30,768	3.69%

32	29,695	29,332	-1.22%
33	29,431	30,119	2.34%
34	29,177	31,563	8.18%
35	29,347	30,038	2.35%
36	29,237	32,804	12.20%
37	29,962	37,047	23.65%
38	29,088	28,334	-2.59%
39	29,645	27,494	-7.26%
40	29,263	28,269	-3.40%
41	29,377	29,333	-0.15%
42	29,171	30,431	4.32%
43	29,651	30,831	3.98%
44	29,392	36,028	22.58%
45	29,432	32,316	9.80%
46	29,228	31,425	7.52%
47	29,664	32,224	8.63%
48	29,543	32,028	8.41%
49	29,630	27,221	-8.13%
50	29,777	29,688	-0.30%
51	29,413	29,681	0.91%
52	29,085	27,266	-6.25%
53	29,682	31,956	7.66%
54	29,374	33,582	14.33%
55	29,412	33,970	15.50%
56	29,235	28,762	-1.62%
57	29,663	36,951	24.57%
58	29,445	27,559	-6.41%
59	29,596	31,334	5.87%
60	29,174	33,039	13.25%
61	29,473	31,204	5.87%
62	29,150	36,549	25.38%

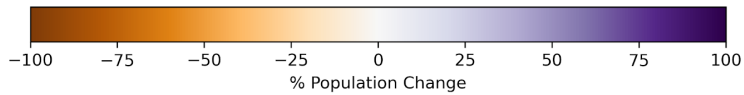
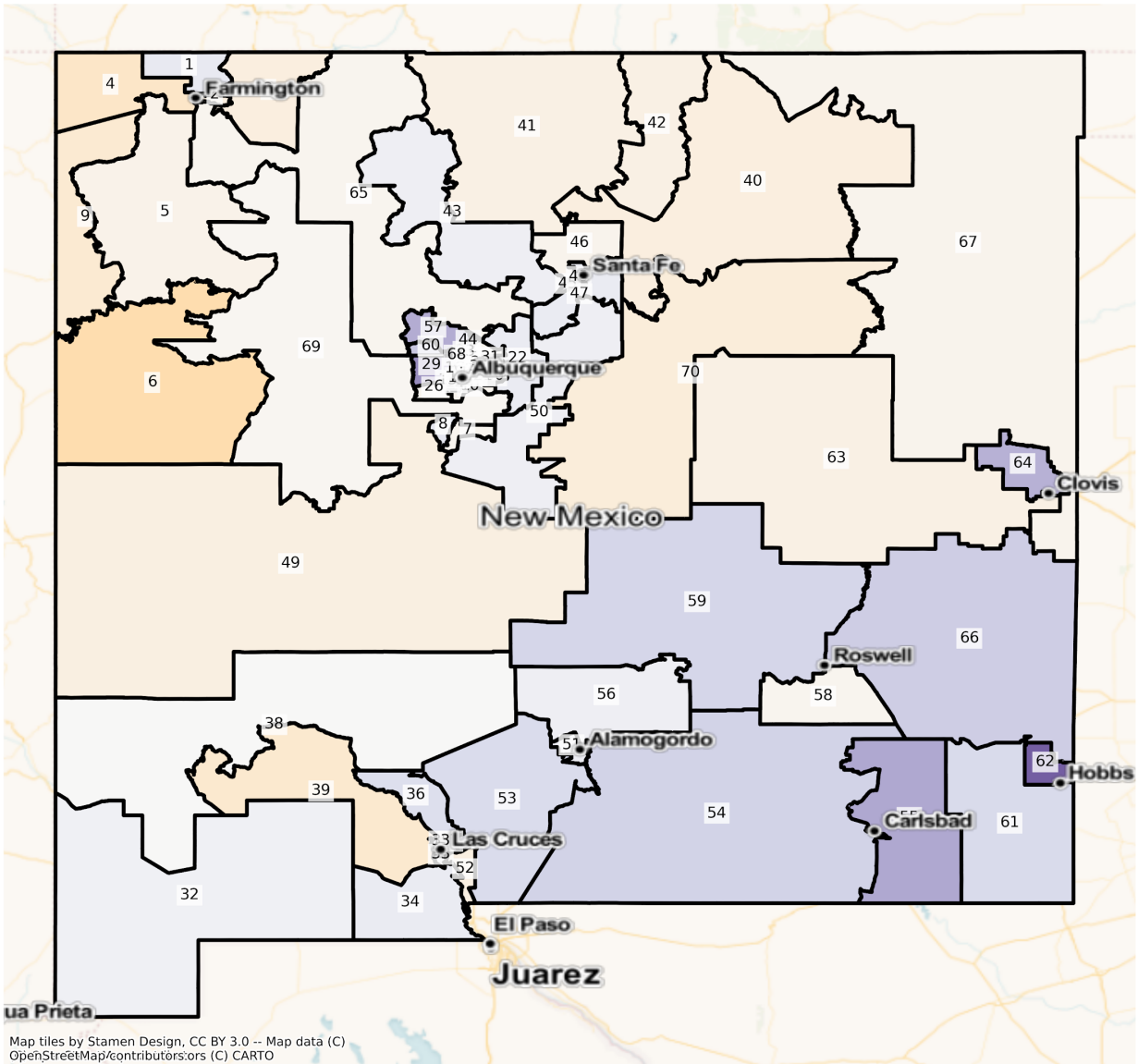
63	29,000	26,720	-7.86%
64	29,526	31,109	5.36%
65	27,949	27,298	-2.33%
66	29,669	30,023	1.19%
67	29,290	27,334	-6.68%
68	29,467	30,796	4.51%
69	28,842	29,703	2.99%
70	29,653	26,807	-9.60%

Population by Race and Ethnicity

NM State House Districts
 Population % Change from 2010 to 2020
 Ethnicity: Not Latino White alone

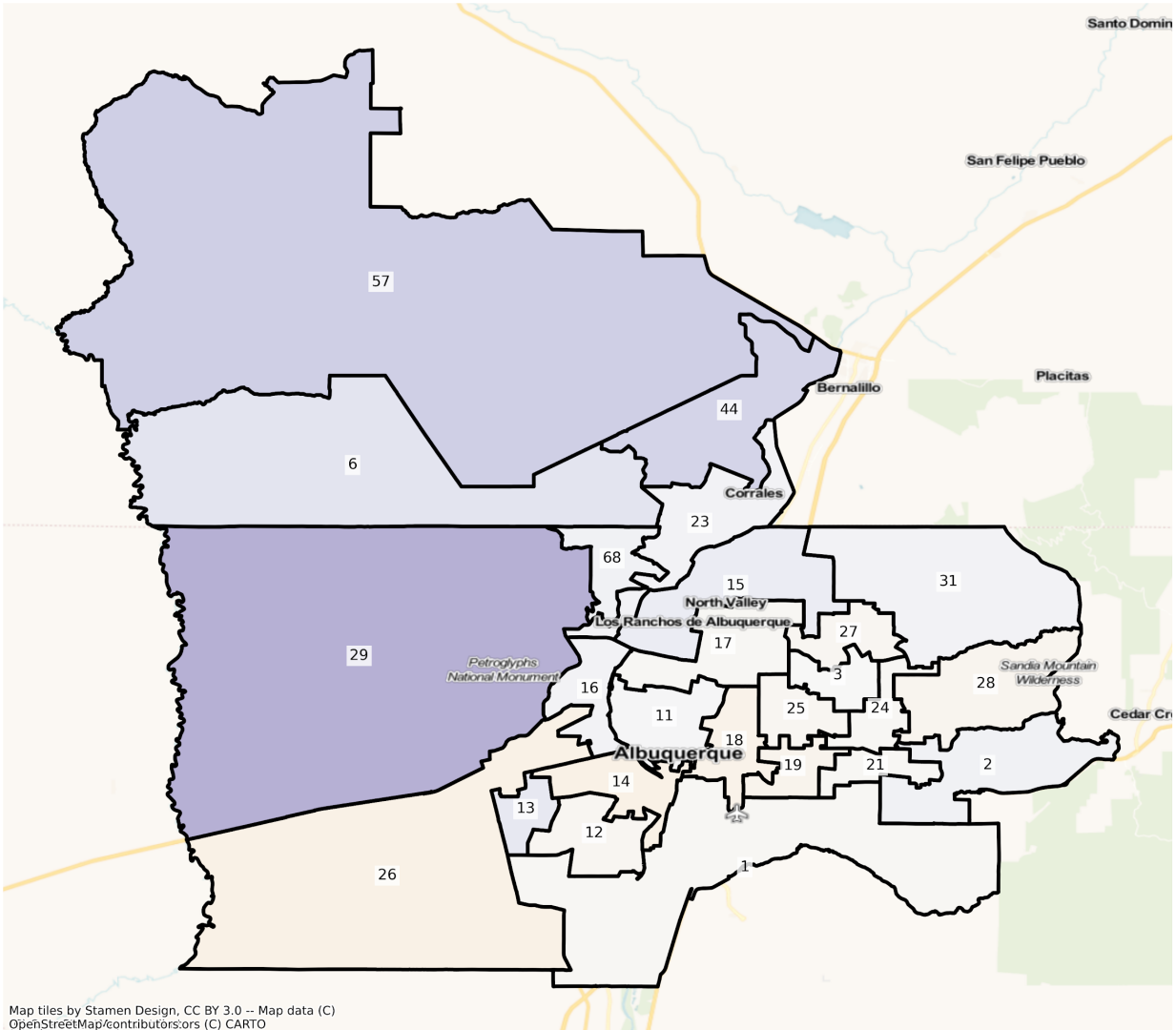


NM State House Districts
Population % Change from 2010 to 2020
Ethnicity: Hispanic or Latino

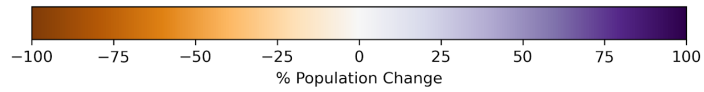


Albuquerque

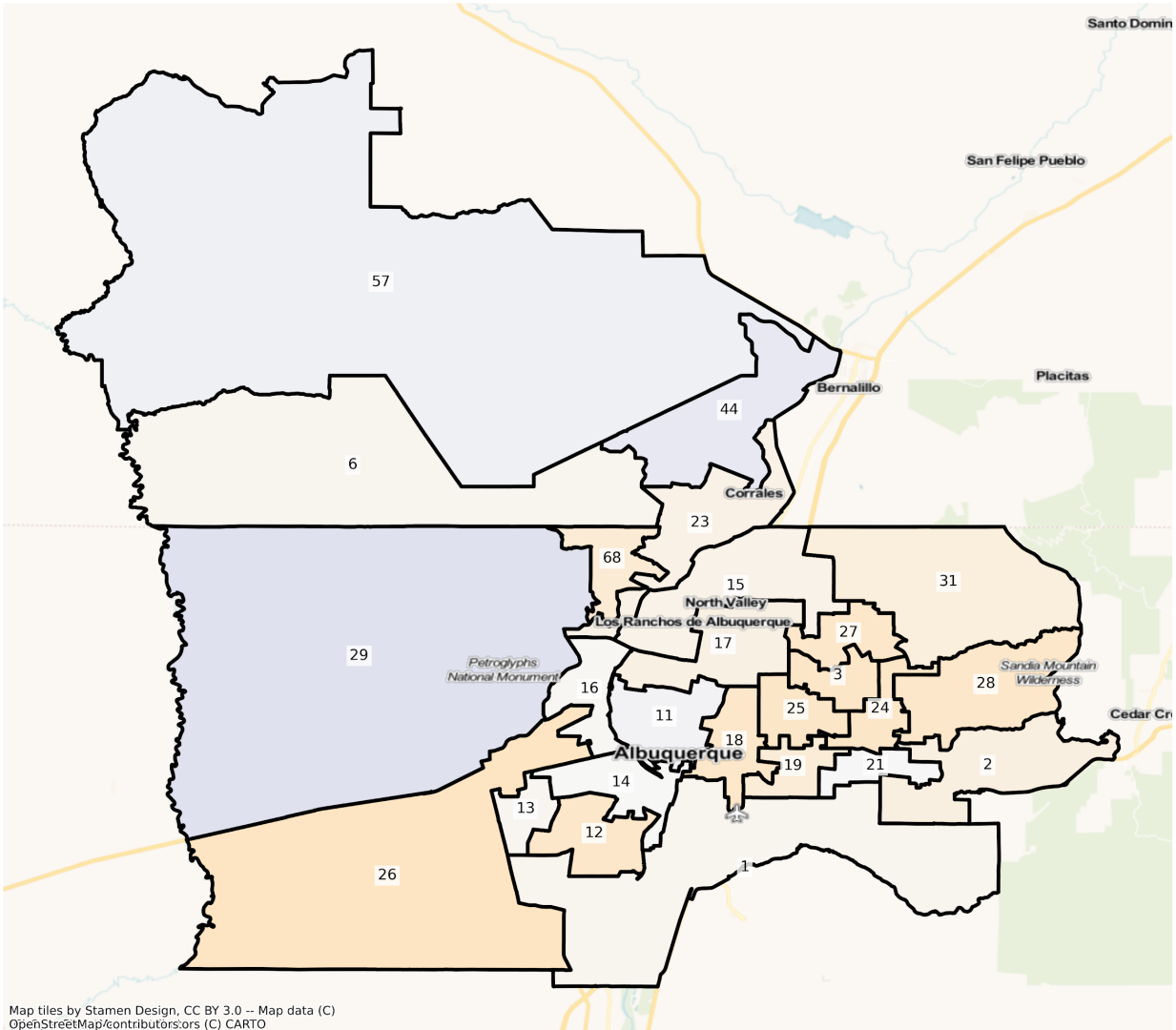
NM Albuquerque State House Districts
Population % Change from 2010 to 2020
Total Population



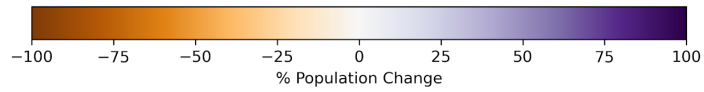
Map tiles by Stamen Design, CC BY 3.0 -- Map data (C)
OpenStreetMap/contributors,ors (C) CARTO



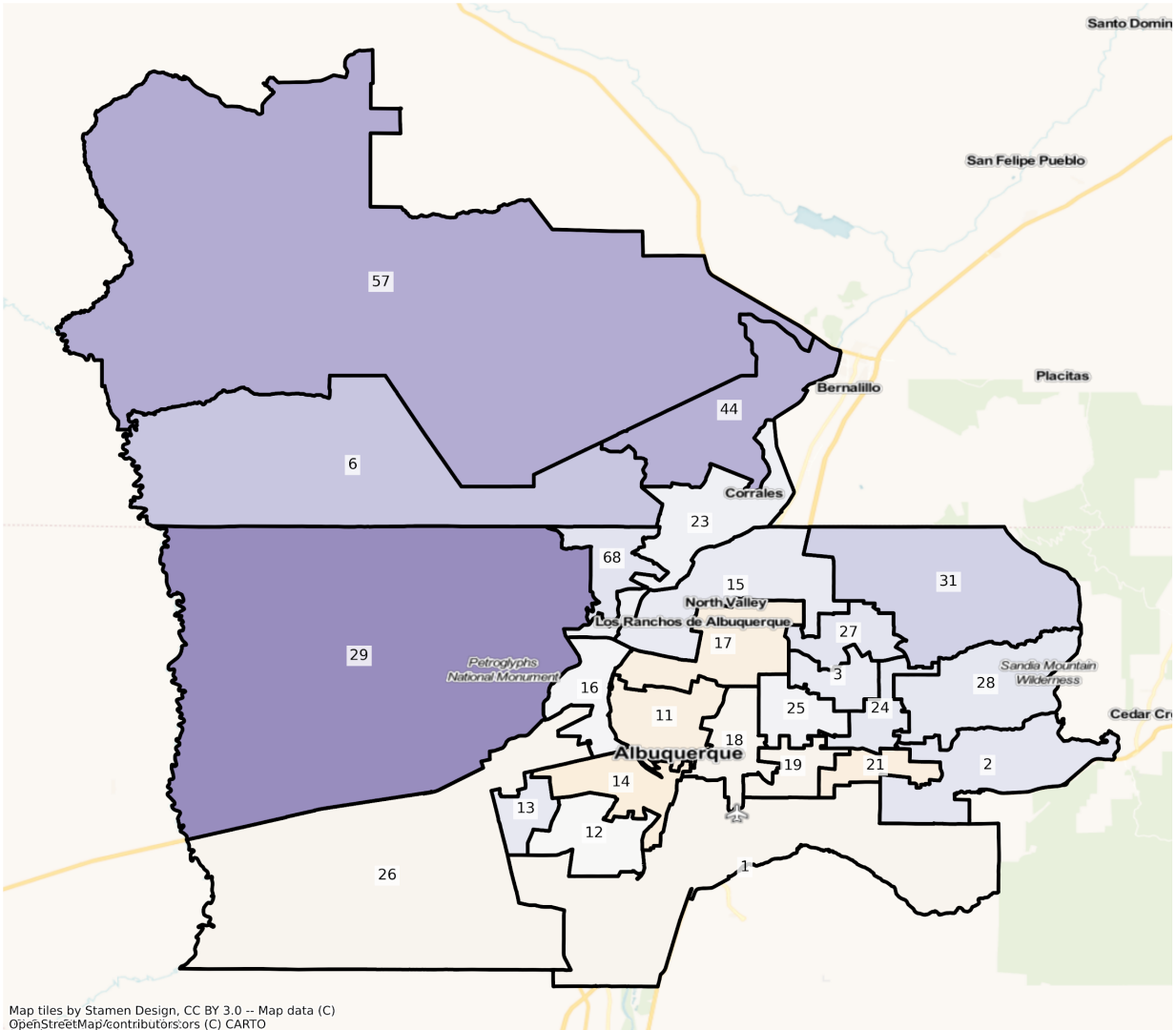
NM Albuquerque State House Districts
Population % Change from 2010 to 2020
Ethnicity: Not Latino White alone



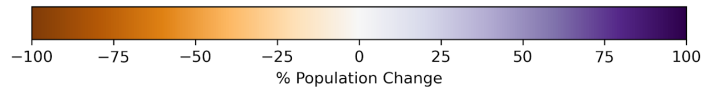
Map tiles by Stamen Design, CC BY 3.0 -- Map data (C)
OpenStreetMap/contributors/ors (C) CARTO



NM Albuquerque State House Districts
Population % Change from 2010 to 2020
Ethnicity: Hispanic or Latino

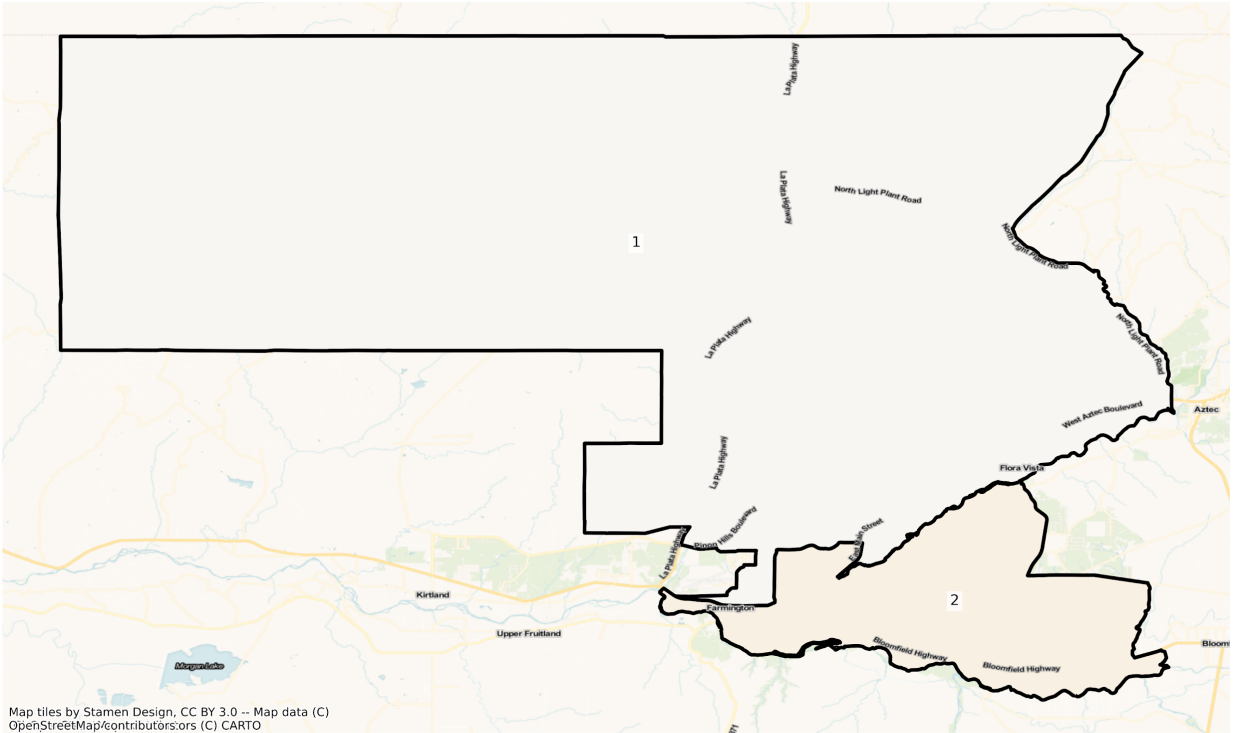


Map tiles by Stamen Design, CC BY 3.0 -- Map data (C)
OpenStreetMap/contributors,ors (C) CARTO

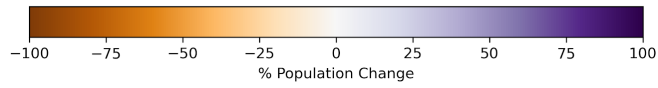


Farmington

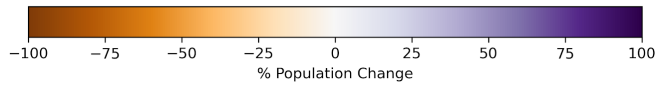
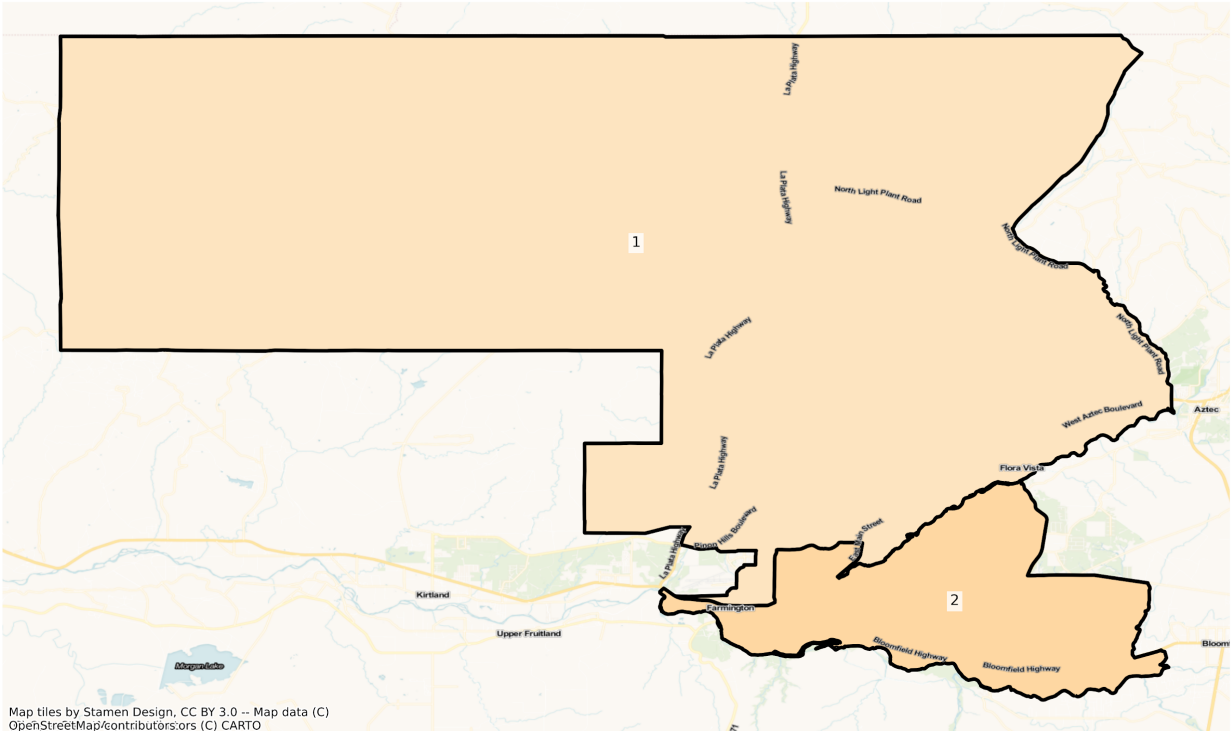
NM Farmington State House Districts
Population % Change from 2010 to 2020
Total Population



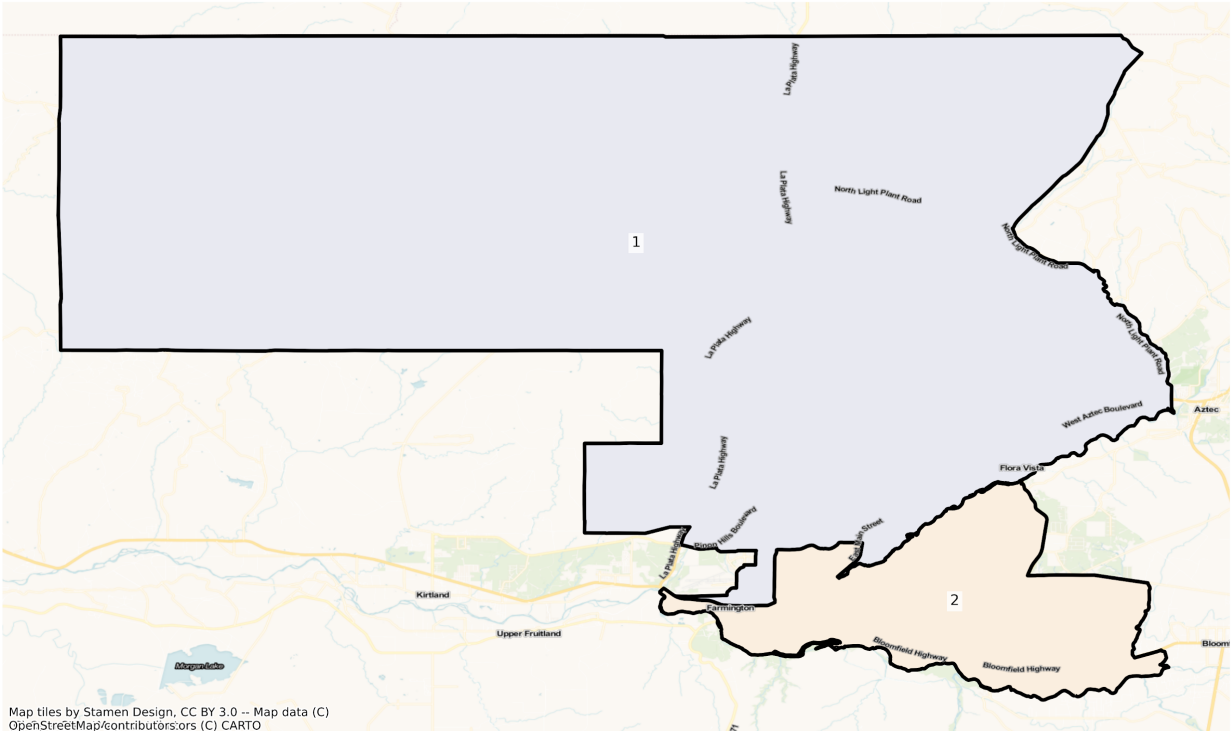
Map tiles by Stamen Design, CC BY 3.0 -- Map data (C)
OpenStreetMap/contributors/ors (C) CARTO



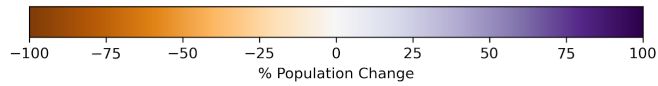
NM Farmington State House Districts
Population % Change from 2010 to 2020
Ethnicity: Not Latino White alone



NM Farmington State House Districts
Population % Change from 2010 to 2020
Ethnicity: Hispanic or Latino

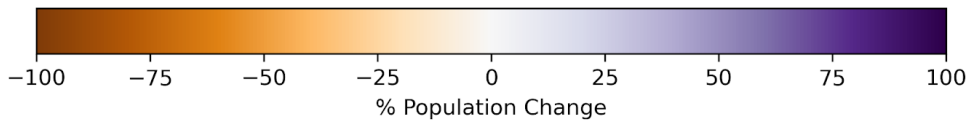
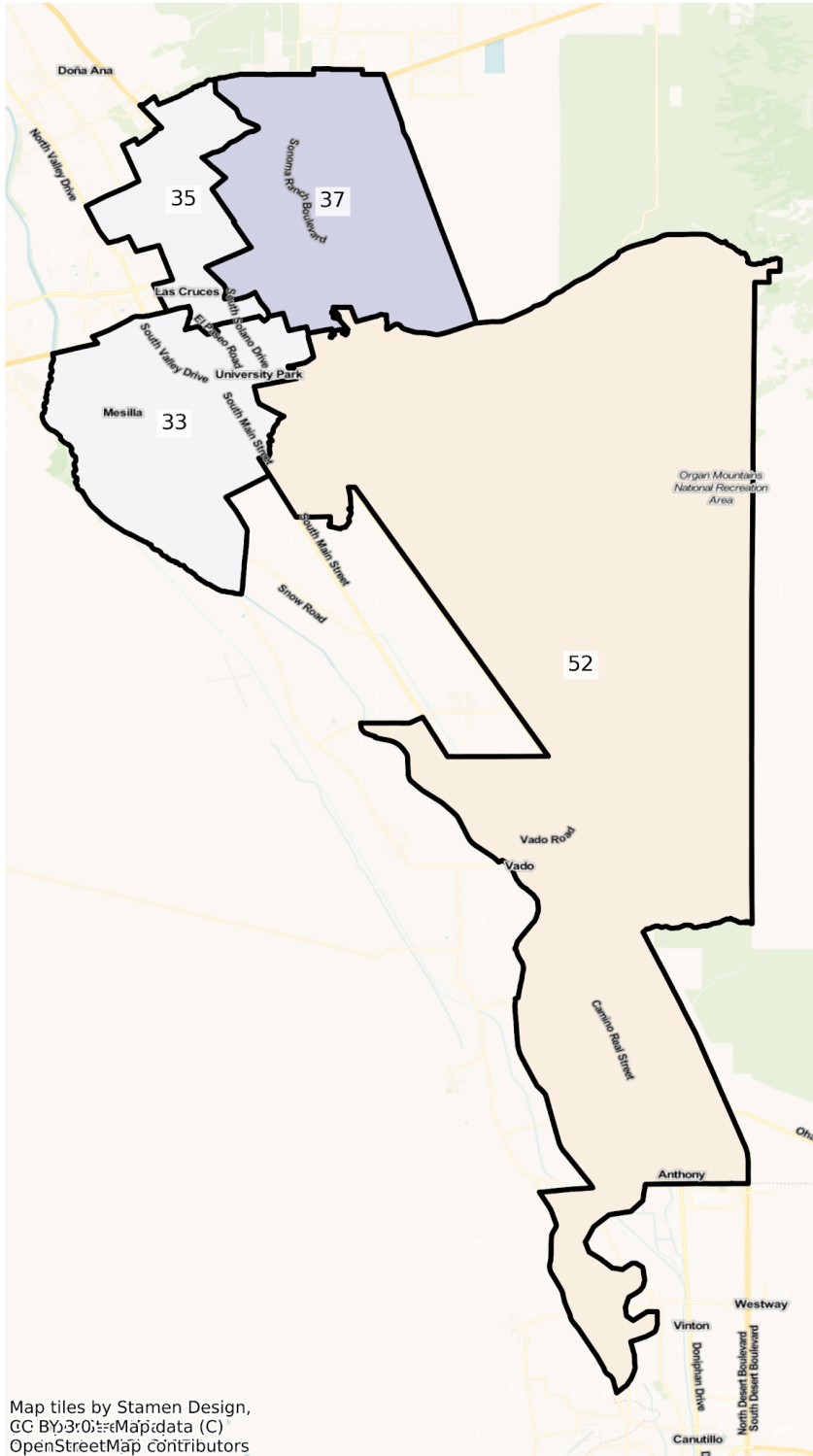


Map tiles by Stamen Design, CC BY 3.0 -- Map data (C)
OpenStreetMap/contributors/ors (C) CARTO

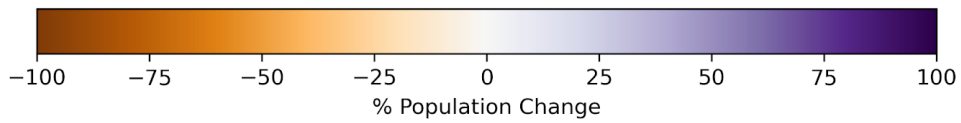
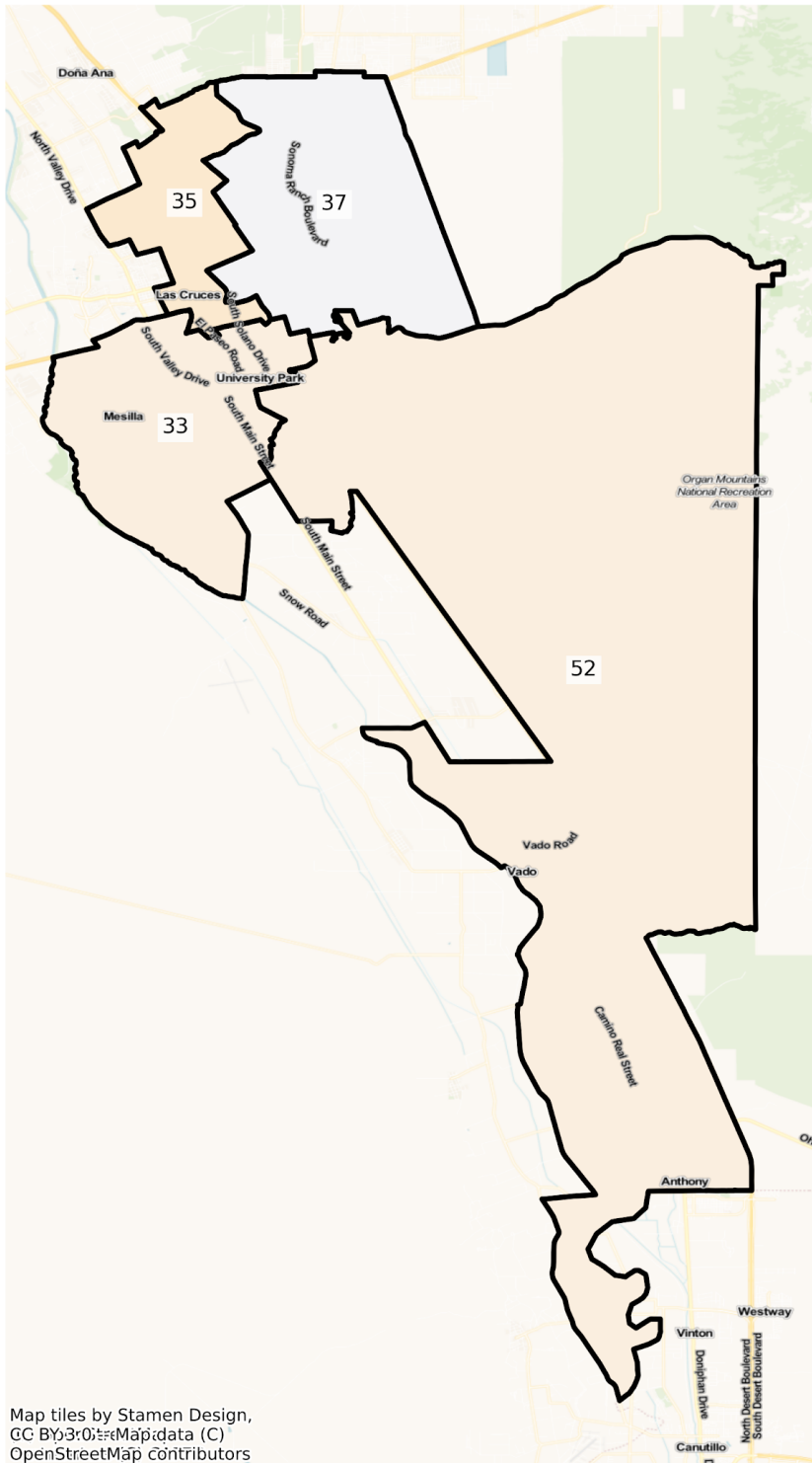


Las Cruces

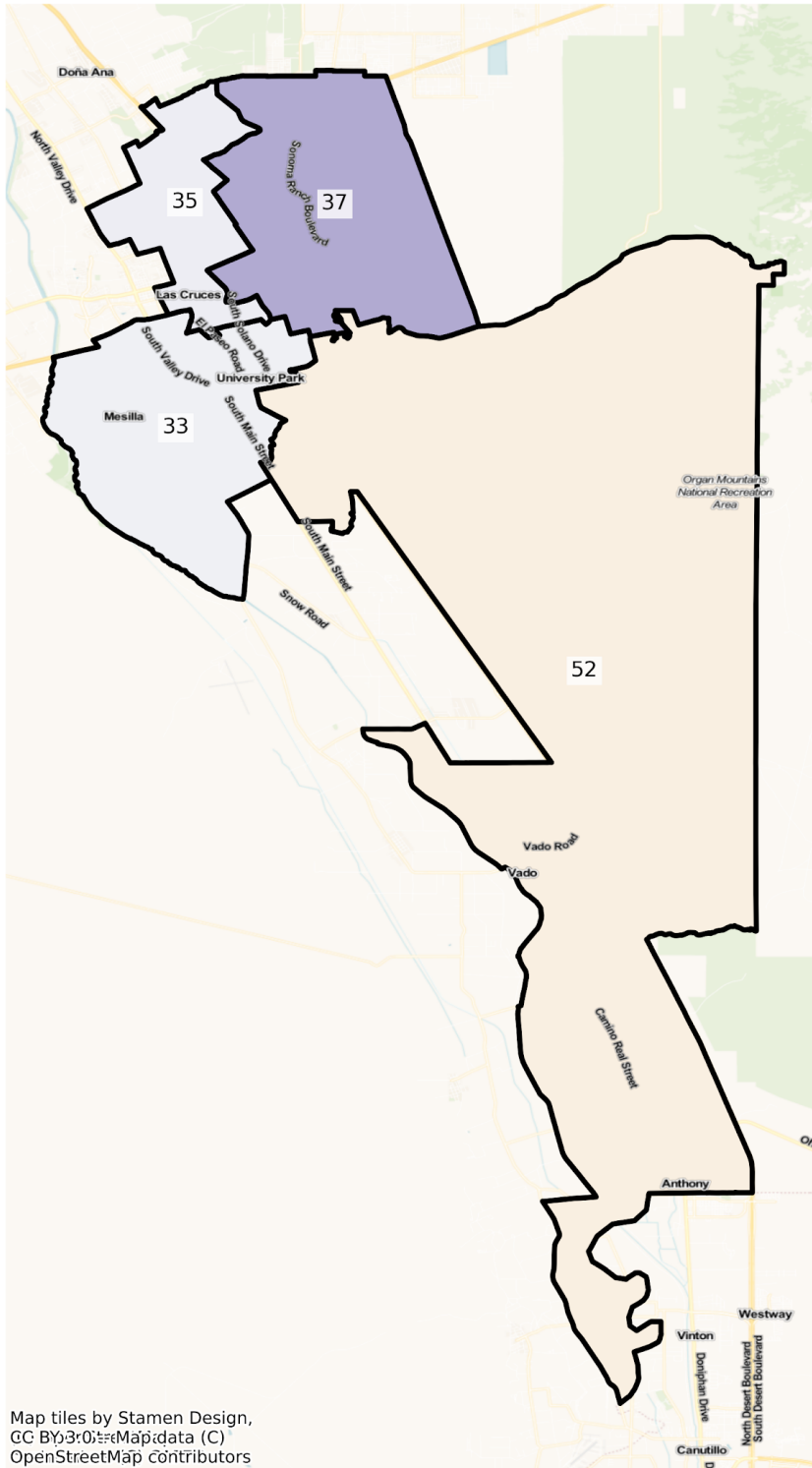
NM Las Cruces State House Districts Population % Change from 2010 to 2020 Total Population



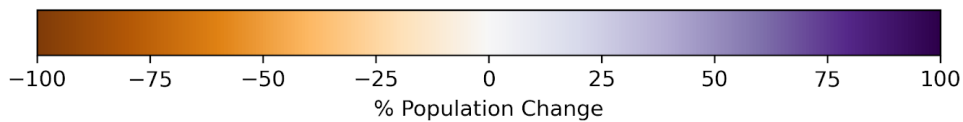
NM Las Cruces State House Districts
Population % Change from 2010 to 2020
Ethnicity: Not Latino White alone



NM Las Cruces State House Districts Population % Change from 2010 to 2020 Ethnicity: Hispanic or Latino

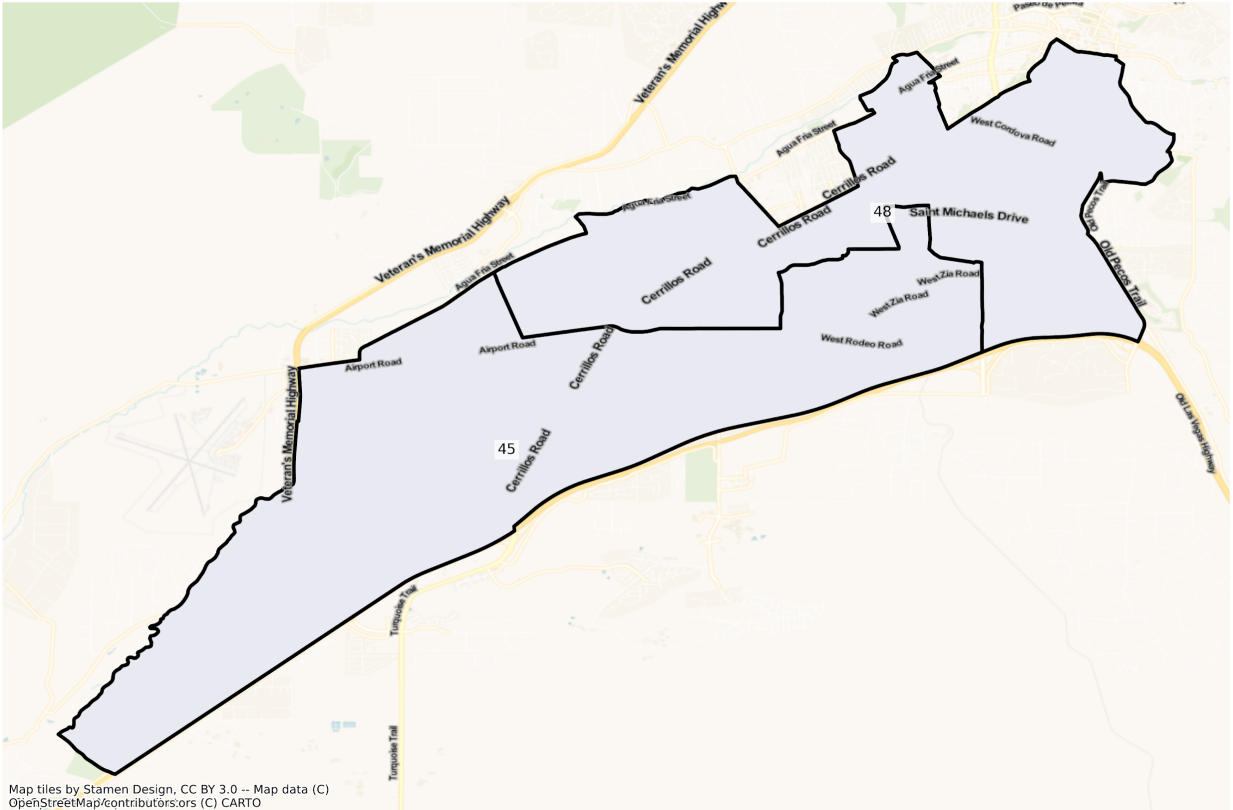


Map tiles by Stamen Design,
CC BY 3.0; OpenStreetMap contributors

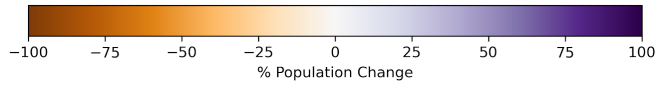


Santa Fe

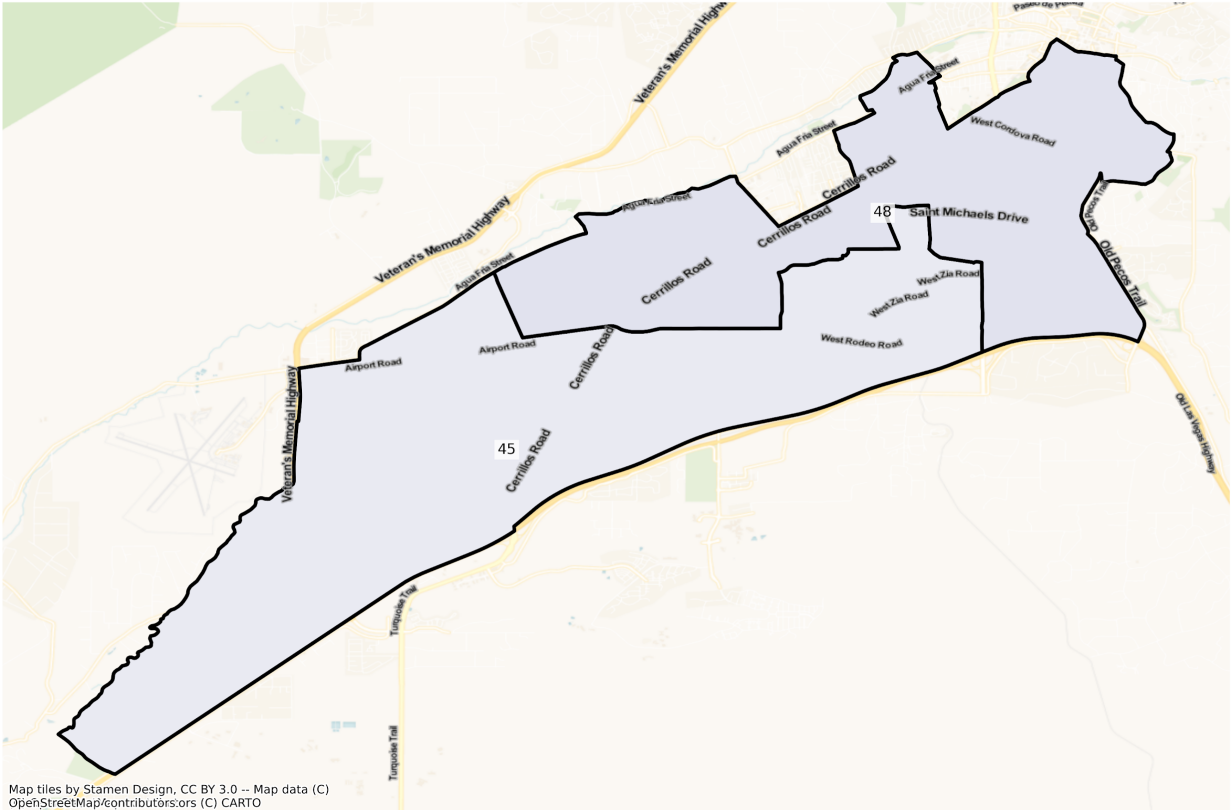
NM Santa Fe State House Districts
Population % Change from 2010 to 2020
Total Population



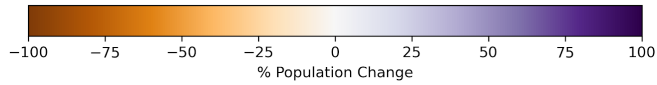
Map tiles by Stamen Design, CC BY 3.0 -- Map data (C)
OpenStreetMap/contributors.ors (C) CARTO



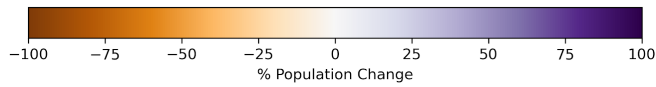
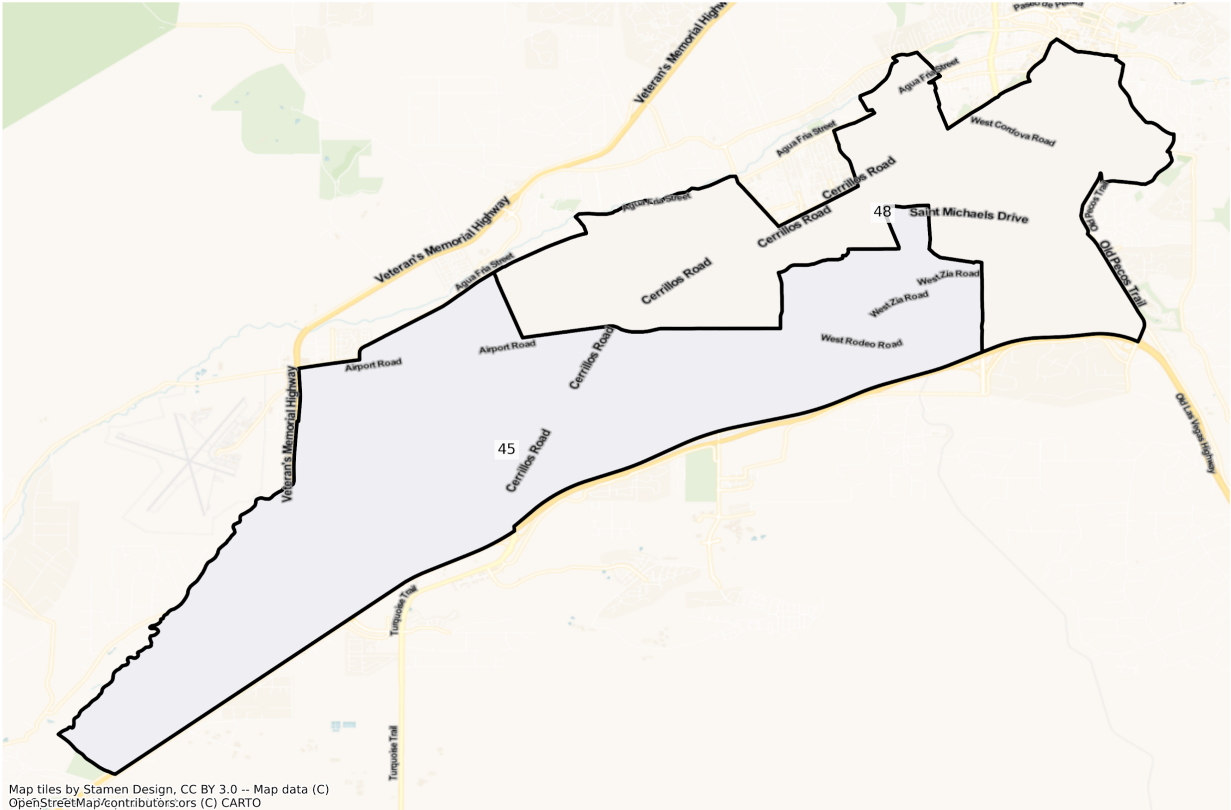
NM Santa Fe State House Districts
Population % Change from 2010 to 2020
Ethnicity: Not Latino White alone



Map tiles by Stamen Design, CC BY 3.0 -- Map data (C)
OpenStreetMap/contributors.ors (C) CARTO



NM Santa Fe State House Districts
 Population % Change from 2010 to 2020
 Ethnicity: Hispanic or Latino



2010 Population by Race and Ethnicity at State House District Level

DISTRICT	Total Population	Hispanic or Latino Origin	White Alone, not Latino	African American Alone, not Latino	AIAN Alone, not Latino ¹	Asian Alone, not Latino	NHPI Alone, not Latino ²	Other Alone, not Latino	Two or More, not Latino
1	29,636	5,555	19,562	231	3,417	208	20	46	597
2	28,980	8,331	13,150	184	6,598	81	15	24	597
3	28,852	7,963	17,054	108	3,126	83	6	40	472
4	29,914	2,608	5,357	87	21,143	58	23	7	631
5	28,673	3,431	3,058	111	21,280	277	5	26	485
6	29,513	5,470	4,013	115	19,389	106	9	13	398
7	29,184	18,671	9,392	194	482	117	9	34	285

8	29,558	16,204	11,746	406	649	151	21	57	324
9	28,085	5,258	2,756	166	19,046	232	3	17	607
10	29,686	20,254	7,179	965	507	278	16	44	443
11	29,464	16,825	10,141	544	1,251	180	21	85	417
12	29,595	24,748	3,485	409	452	133	13	85	270
13	29,571	23,723	3,665	735	815	251	14	69	299
14	29,560	24,930	3,400	454	420	64	9	67	216
15	29,629	12,137	14,496	344	1,097	1,001	21	55	478
16	29,421	18,518	8,163	700	1,143	366	19	118	394
17	29,603	16,219	10,880	457	1,094	446	16	87	404
18	29,649	10,318	15,124	833	1,535	1,064	18	91	666
19	29,695	12,486	12,655	1,279	1,744	737	21	61	712
20	29,921	9,828	15,655	896	1,210	1,597	34	65	636
21	29,497	17,553	7,606	1,178	1,857	697	25	53	528
22	29,742	6,516	21,904	224	393	228	11	52	414
23	29,440	11,143	15,402	689	1,088	492	18	63	545
24	29,650	9,850	16,560	878	1,030	562	18	48	704
25	29,179	11,399	14,455	655	1,183	847	13	61	566
26	29,605	20,633	5,686	960	1,403	394	30	95	404
27	29,807	7,375	19,530	558	803	957	21	61	502
28	29,804	7,563	19,185	742	679	923	19	44	649
29	29,560	13,538	12,956	871	803	648	28	31	685
30	29,226	9,118	16,183	895	1,557	824	38	37	574
31	29,672	5,054	21,805	379	238	1,547	13	56	580
32	29,695	18,128	10,791	206	160	134	4	39	233
33	29,431	16,908	10,570	588	388	508	28	44	397
34	29,177	25,300	3,603	81	34	43	6	40	70
35	29,347	19,442	8,703	455	251	152	16	28	300
36	29,237	19,644	8,590	344	198	131	7	51	272
37	29,962	13,377	14,553	650	233	659	29	46	415
38	29,088	9,562	18,520	190	251	131	18	58	358

39	29,645	18,317	10,444	205	244	101	10	80	244
40	29,263	20,604	6,772	73	1,451	73	17	71	202
41	29,377	21,144	6,011	83	1,528	167	1	165	278
42	29,171	16,995	9,772	92	1,678	182	4	78	370
43	29,651	10,737	16,655	121	583	1,109	11	46	389
44	29,392	9,716	17,173	610	685	459	43	84	622
45	29,432	18,936	9,075	199	406	452	11	56	297
46	29,228	15,913	10,813	160	1,723	212	8	80	319
47	29,664	9,869	18,158	231	490	412	16	64	424
48	29,543	17,414	10,790	225	381	278	12	93	350
49	29,630	15,294	12,645	265	787	222	5	71	341
50	29,777	9,847	18,606	282	339	192	14	64	433
51	29,413	9,291	17,101	1,366	308	463	86	37	761
52	29,085	22,346	5,785	186	182	382	13	37	154
53	29,682	18,147	9,849	789	186	183	62	47	419
54	29,374	13,743	14,553	370	244	80	11	45	328
55	29,412	10,912	17,432	235	224	271	8	25	305
56	29,235	8,584	16,075	287	3,656	178	8	32	415
57	29,663	12,401	14,244	883	923	393	49	73	697
58	29,445	19,858	8,433	565	246	69	0	54	220
59	29,596	11,161	17,389	331	186	168	9	54	298
60	29,174	10,799	15,587	719	674	696	31	49	619
61	29,473	18,646	8,986	1,302	202	53	13	27	244
62	29,150	11,544	15,804	1,018	236	227	4	24	293
63	29,000	17,788	9,060	1,335	199	181	10	34	393
64	29,526	8,337	18,289	1,523	181	463	18	49	666
65	27,949	7,064	2,195	62	18,327	29	9	23	240
66	29,669	10,691	17,622	446	208	288	25	27	362
67	29,290	12,673	15,554	295	225	157	6	26	354
68	29,467	12,339	14,081	867	814	602	35	70	659
69	28,842	6,025	3,648	162	18,538	85	19	18	347

70	29,653	20,688	7,676	414	367	171	23	49	265
----	--------	--------	-------	-----	-----	-----	----	----	-----

¹American Indian and Alaska Native Alone, Not Latino

²Native Hawaiian and Pacific Islander Alone, Not Latino

2020 Population by Race and Ethnicity at State House District Level

DISTRICT	Total Population	Hispanic or Latino Origin	White Alone, not Latino	African American Alone, not Latino	AIAN Alone, not Latino ¹	Asian Alone, not Latino	NHPI Alone, not Latino ²	Other Alone, not Latino	Two or More, not Latino
1	29,351	6,095	16,247	209	4,905	336	20	152	1,387
2	27,273	7,699	9,912	185	8,295	172	17	119	874
3	25,740	7,382	13,306	65	3,767	119	12	149	940
4	28,067	2,222	4,033	88	20,755	200	16	31	722
5	28,922	3,272	2,423	137	21,933	418	13	73	653
6	29,387	4,305	3,868	122	20,371	163	1	30	527
7	27,814	18,181	8,036	195	507	75	9	167	644
8	31,317	18,009	10,890	377	865	186	10	179	801
9	27,830	4,656	2,112	159	19,777	426	18	44	638
10	29,415	19,710	6,958	861	675	327	36	146	702
11	29,830	15,657	10,494	723	1,421	383	23	182	947
12	29,083	24,637	3,014	329	481	143	20	97	362
13	32,761	26,206	3,602	851	1,078	385	10	120	509
14	28,085	22,950	3,389	563	536	145	20	130	352
15	31,898	13,215	13,908	523	1,193	1,836	24	176	1,023
16	30,468	18,923	8,093	796	1,282	494	16	98	766
17	29,362	15,158	10,246	746	1,492	622	11	143	944
18	28,293	10,004	13,011	941	1,609	1,295	33	212	1,188
19	28,674	12,016	11,441	1,314	1,894	680	29	181	1,119
20	31,295	11,055	14,570	978	1,226	2,053	40	131	1,242
21	29,196	16,239	7,660	1,384	2,159	628	29	144	953
22	29,916	7,045	20,725	202	353	214	19	264	1,094
23	30,453	11,716	14,579	769	1,415	819	21	173	961

24	29,306	10,980	14,168	758	1,342	768	22	152	1,116
25	28,496	11,813	12,387	724	1,362	916	24	166	1,104
26	28,164	20,065	4,757	834	1,395	426	24	101	562
27	29,194	8,350	16,802	554	1,016	1,193	13	155	1,111
28	29,056	8,411	16,632	682	876	1,012	18	176	1,249
29	40,733	20,321	14,960	1,226	1,383	1,049	34	185	1,575
30	29,207	9,918	13,906	1,080	1,950	956	27	181	1,189
31	30,768	6,250	20,024	378	286	2,319	30	147	1,334
32	29,332	19,037	9,078	241	157	171	15	76	557
33	30,119	17,795	9,795	699	339	586	17	151	737
34	31,563	27,391	3,560	131	66	71	13	127	204
35	30,038	20,734	7,658	465	280	186	16	125	574
36	32,804	22,911	8,377	353	203	204	22	120	614
37	37,047	18,715	14,941	947	265	975	27	143	1,034
38	28,334	9,537	16,951	258	259	265	17	145	902
39	27,494	16,095	10,197	255	206	128	11	106	496
40	28,269	19,121	6,660	82	1,659	99	12	130	506
41	29,333	19,915	6,690	112	1,752	190	3	163	508
42	30,431	15,996	11,382	119	1,771	178	4	207	774
43	30,831	11,337	16,152	194	559	1,305	20	195	1,069
44	36,028	13,300	18,964	667	932	633	35	179	1,318
45	32,316	20,117	9,865	296	528	598	12	189	711
46	31,425	15,383	12,447	187	2,160	300	16	177	755
47	32,224	10,648	19,100	258	386	529	15	230	1,058
48	32,028	17,069	12,391	348	527	603	15	208	867
49	27,221	14,304	10,732	218	734	320	10	173	730
50	29,688	10,398	17,167	271	359	208	20	193	1,072
51	29,681	9,903	15,588	1,496	299	672	87	196	1,440
52	27,266	20,942	5,370	185	111	260	6	64	328
53	31,956	21,416	8,268	701	240	280	46	133	872
54	33,582	16,922	14,640	466	267	213	23	223	828

55	33,970	15,398	16,405	346	283	385	21	230	902
56	28,762	9,080	13,861	328	4,083	235	27	133	1,015
57	36,951	17,283	14,913	1,049	1,515	557	66	186	1,382
58	27,559	19,294	7,101	409	149	81	12	117	396
59	31,334	13,579	15,838	380	209	305	10	180	833
60	33,039	13,883	15,107	786	953	817	43	126	1,324
61	31,204	22,208	7,006	1,093	148	127	8	99	515
62	36,549	19,101	14,262	1,323	285	492	13	166	907
63	26,720	16,728	7,788	1,150	164	169	6	91	624
64	31,109	11,446	15,839	1,483	150	630	32	162	1,367
65	27,298	6,889	1,751	77	18,048	109	2	64	358
66	30,023	13,385	14,526	548	246	395	18	95	810
67	27,334	12,261	13,628	269	210	118	16	120	712
68	30,796	14,073	12,604	912	1,089	792	59	194	1,073
69	29,703	5,927	3,575	196	19,092	201	14	193	505
70	26,807	18,830	6,622	279	328	116	3	127	502

¹American Indian and Alaska Native Alone, Not Latino

²Native Hawaiian and Pacific Islander Alone, Not Latino

Percent Change in Population from 2010 to 2020 by Race and Ethnicity at State House District Level

DISTRICT	Total Population	Hispanic or Latino Origin	White Alone, not Latino	African American Alone, not Latino	AIAN Alone, not Latino ¹	Asian Alone, not Latino	NHPI Alone, not Latino ²	Other Alone, not Latino	Two or More, not Latino
1	-0.96%	9.72%	-16.95%	-9.52%	43.55%	61.54%	0.00%	230.43%	132.33%
2	-5.89%	-7.59%	-24.62%	0.54%	25.72%	112.35%	13.33%	395.83%	46.40%
3	-10.79%	-7.30%	-21.98%	-39.81%	20.51%	43.37%	100.00%	272.50%	99.15%
4	-6.17%	-14.80%	-24.72%	1.15%	-1.84%	244.83%	-30.43%	342.86%	14.42%
5	0.87%	-4.63%	-20.77%	23.42%	3.07%	50.90%	160.00%	180.77%	34.64%
6	-0.43%	-21.30%	-3.61%	6.09%	5.06%	53.77%	-88.89%	130.77%	32.41%
7	-4.69%	-2.62%	-14.44%	0.52%	5.19%	-35.90%	0.00%	391.18%	125.96%
8	5.95%	11.14%	-7.29%	-7.14%	33.28%	23.18%	-52.38%	214.04%	147.22%

9	-0.91%	-11.45%	-23.37%	-4.22%	3.84%	83.62%	500.00%	158.82%	5.11%
10	-0.91%	-2.69%	-3.08%	-10.78%	33.14%	17.63%	125.00%	231.82%	58.47%
11	1.24%	-6.94%	3.48%	32.90%	13.59%	112.78%	9.52%	114.12%	127.10%
12	-1.73%	-0.45%	-13.52%	-19.56%	6.42%	7.52%	53.85%	14.12%	34.07%
13	10.79%	10.47%	-1.72%	15.78%	32.27%	53.39%	-28.57%	73.91%	70.23%
14	-4.99%	-7.94%	-0.32%	24.01%	27.62%	126.56%	122.22%	94.03%	62.96%
15	7.66%	8.88%	-4.06%	52.03%	8.75%	83.42%	14.29%	220.00%	114.02%
16	3.56%	2.19%	-0.86%	13.71%	12.16%	34.97%	-15.79%	-16.95%	94.42%
17	-0.81%	-6.54%	-5.83%	63.24%	36.38%	39.46%	-31.25%	64.37%	133.66%
18	-4.57%	-3.04%	-13.97%	12.97%	4.82%	21.71%	83.33%	132.97%	78.38%
19	-3.44%	-3.76%	-9.59%	2.74%	8.60%	-7.73%	38.10%	196.72%	57.16%
20	4.59%	12.48%	-6.93%	9.15%	1.32%	28.55%	17.65%	101.54%	95.28%
21	-1.02%	-7.49%	0.71%	17.49%	16.26%	-9.90%	16.00%	171.70%	80.49%
22	0.59%	8.12%	-5.38%	-9.82%	-10.18%	-6.14%	72.73%	407.69%	164.25%
23	3.44%	5.14%	-5.34%	11.61%	30.06%	66.46%	16.67%	174.60%	76.33%
24	-1.16%	11.47%	-14.44%	-13.67%	30.29%	36.65%	22.22%	216.67%	58.52%
25	-2.34%	3.63%	-14.31%	10.53%	15.13%	8.15%	84.62%	172.13%	95.05%
26	-4.87%	-2.75%	-16.34%	-13.13%	-0.57%	8.12%	-20.00%	6.32%	39.11%
27	-2.06%	13.22%	-13.97%	-0.72%	26.53%	24.66%	-38.10%	154.10%	121.31%
28	-2.51%	11.21%	-13.31%	-8.09%	29.01%	9.64%	-5.26%	300.00%	92.45%
29	37.80%	50.10%	15.47%	40.76%	72.23%	61.88%	21.43%	496.77%	129.93%
30	-0.07%	8.77%	-14.07%	20.67%	25.24%	16.02%	-28.95%	389.19%	107.14%
31	3.69%	23.66%	-8.17%	-0.26%	20.17%	49.90%	130.77%	162.50%	130.00%
32	-1.22%	5.01%	-15.87%	16.99%	-1.88%	27.61%	275.00%	94.87%	139.06%
33	2.34%	5.25%	-7.33%	18.88%	-12.63%	15.35%	-39.29%	243.18%	85.64%
34	8.18%	8.26%	-1.19%	61.73%	94.12%	65.12%	116.67%	217.50%	191.43%
35	2.35%	6.65%	-12.01%	2.20%	11.55%	22.37%	0.00%	346.43%	91.33%
36	12.20%	16.63%	-2.48%	2.62%	2.53%	55.73%	214.29%	135.29%	125.74%
37	23.65%	39.90%	2.67%	45.69%	13.73%	47.95%	-6.90%	210.87%	149.16%
38	-2.59%	-0.26%	-8.47%	35.79%	3.19%	102.29%	-5.56%	150.00%	151.96%
39	-7.26%	-12.13%	-2.36%	24.39%	-15.57%	26.73%	10.00%	32.50%	103.28%

40	-3.40%	-7.20%	-1.65%	12.33%	14.33%	35.62%	-29.41%	83.10%	150.50%
41	-0.15%	-5.81%	11.30%	34.94%	14.66%	13.77%	200.00%	-1.21%	82.73%
42	4.32%	-5.88%	16.48%	29.35%	5.54%	-2.20%	0.00%	165.38%	109.19%
43	3.98%	5.59%	-3.02%	60.33%	-4.12%	17.67%	81.82%	323.91%	174.81%
44	22.58%	36.89%	10.43%	9.34%	36.06%	37.91%	-18.60%	113.10%	111.90%
45	9.80%	6.24%	8.71%	48.74%	30.05%	32.30%	9.09%	237.50%	139.39%
46	7.52%	-3.33%	15.11%	16.88%	25.36%	41.51%	100.00%	121.25%	136.68%
47	8.63%	7.89%	5.19%	11.69%	-21.22%	28.40%	-6.25%	259.38%	149.53%
48	8.41%	-1.98%	14.84%	54.67%	38.32%	116.91%	25.00%	123.66%	147.71%
49	-8.13%	-6.47%	-15.13%	-17.74%	-6.73%	44.14%	100.00%	143.66%	114.08%
50	-0.30%	5.60%	-7.73%	-3.90%	5.90%	8.33%	42.86%	201.56%	147.58%
51	0.91%	6.59%	-8.85%	9.52%	-2.92%	45.14%	1.16%	429.73%	89.22%
52	-6.25%	-6.28%	-7.17%	-0.54%	-39.01%	-31.94%	-53.85%	72.97%	112.99%
53	7.66%	18.01%	-16.05%	-11.15%	29.03%	53.01%	-25.81%	182.98%	108.11%
54	14.33%	23.13%	0.60%	25.95%	9.43%	166.25%	109.09%	395.56%	152.44%
55	15.50%	41.11%	-5.89%	47.23%	26.34%	42.07%	162.50%	820.00%	195.74%
56	-1.62%	5.78%	-13.77%	14.29%	11.68%	32.02%	237.50%	315.63%	144.58%
57	24.57%	39.37%	4.70%	18.80%	64.14%	41.73%	34.69%	154.79%	98.28%
58	-6.41%	-2.84%	-15.80%	-27.61%	-39.43%	17.39%	inf	116.67%	80.00%
59	5.87%	21.66%	-8.92%	14.80%	12.37%	81.55%	11.11%	233.33%	179.53%
60	13.25%	28.56%	-3.08%	9.32%	41.39%	17.39%	38.71%	157.14%	113.89%
61	5.87%	19.10%	-22.03%	-16.05%	-26.73%	139.62%	-38.46%	266.67%	111.07%
62	25.38%	65.46%	-9.76%	29.96%	20.76%	116.74%	225.00%	591.67%	209.56%
63	-7.86%	-5.96%	-14.04%	-13.86%	-17.59%	-6.63%	-40.00%	167.65%	58.78%
64	5.36%	37.29%	-13.40%	-2.63%	-17.13%	36.07%	77.78%	230.61%	105.26%
65	-2.33%	-2.48%	-20.23%	24.19%	-1.52%	275.86%	-77.78%	178.26%	49.17%
66	1.19%	25.20%	-17.57%	22.87%	18.27%	37.15%	-28.00%	251.85%	123.76%
67	-6.68%	-3.25%	-12.38%	-8.81%	-6.67%	-24.84%	166.67%	361.54%	101.13%
68	4.51%	14.05%	-10.49%	5.19%	33.78%	31.56%	68.57%	177.14%	62.82%
69	2.99%	-1.63%	-2.00%	20.99%	2.99%	136.47%	-26.32%	972.22%	45.53%
70	-9.60%	-8.98%	-13.73%	-32.61%	-10.63%	-32.16%	-86.96%	159.18%	89.43%

¹American Indian and Alaska Native Alone, Not Latino

²Native Hawaiian and Pacific Islander Alone, Not Latino

Variable definitions

District shapefiles were retrieved from the Redistricting Data Hub, All About Redistricting, and the U.S. Census. The list of variables below can be found in the P1 and P2 table of the PL 94-171. Data was retrieved from the Redistricting Data Hub processed legacy file of the PL 94-171.

Variable Name in Report	Census Variable Reference
Total Population	P0010001
Hispanic or Latino Origin	P0020002
White Alone, not Latino	P0020005
African American Alone, not Latino	P0020006
American Indian and Alaska Native Alone, not Latino	P0020007
Asian Alone, not Latino	P0020008
Native Hawaiian and Pacific Islander Alone, not Latino	P0020009
Other Alone, not Latino	P0020010
Two or More, not Latino	P0020011