

# HAYSTAQ DNA

## Arizona

<b>Overview</b>	<b>2</b>
<b>Congressional</b>	<b>2</b>
Total Population	3
Population by Race and Ethnicity	5
<b>State Senate and State House</b>	<b>12</b>
Total Population	13
Population by Race and Ethnicity	15
Phoenix	20
Tucson	27
<b>Variable definitions</b>	<b>37</b>

## Overview

Arizona added 759,337 people, an increase of 11.8% from 2010. The number of Congressional Districts remained unchanged at 9. Phoenix experienced population decline near its city center. The greater surrounding area of Chandler, Gilbert, Apache Junction, Maricopa, and Wittman saw their populations increase. All of the state's border regions with the exemption of District 13 which stretches from Yuma to Buckeye, experienced population declines. The state's Northwest region lost 18.6% of its population.

The state's white population grew 3.27%. but still fell from 57.81% of the total population to just 53.37%. The growth came from a population shift from rural areas to suburban areas outside cities like Mesa and Glendale.

The state's Hispanic or Latino population was up 15.68%. Latinos now take up 30.66% of the population up 1.01% from the decade before. The Latino population also experienced growth across the state's districts. The Phoenix area saw some population growth but similar to the white population, a majority of their growth occurred in suburban areas outside of Phoenix.

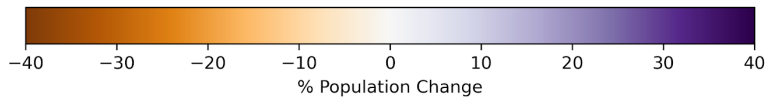
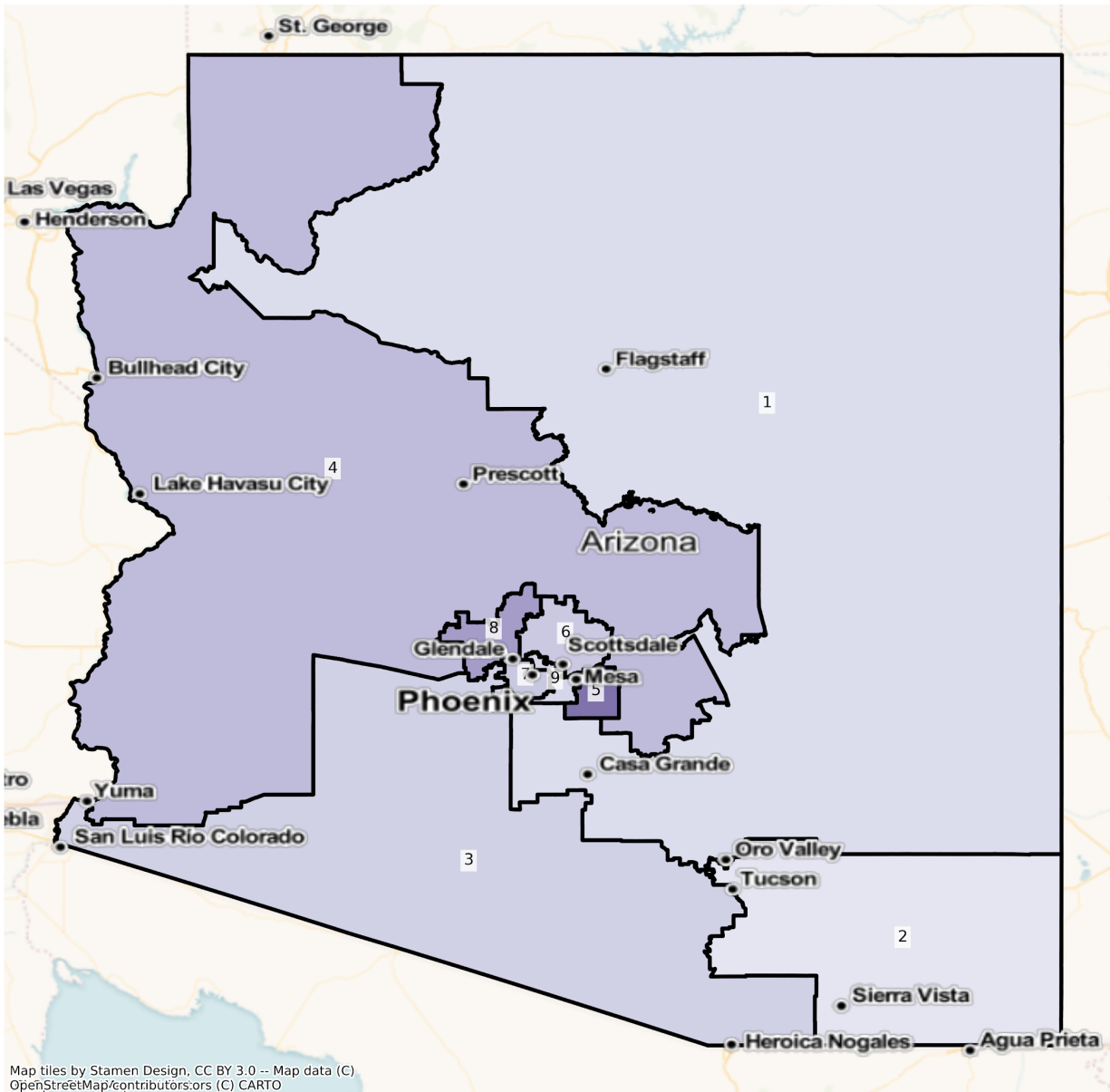
The African American population grew 32.65% in the state. They now make up 4.43% of the state's population, up from 3.74% in 2010. Every district saw growth in its African American population, six of which experienced growth rates of over 30%. Although the capital of Phoenix experienced population loss across the city, its African American population greatly increased across its districts.

## Congressional

The charts below display the percent change in population from 2010 to 2020 for the listed group. Please note that the color bars are fixed to be from -40% to 40% and these maps are displayed in brown to purple. If the percent change in population was outside of this range, the color scheme changes to red to green to indicate a change.

# Total Population

AZ Congressional Districts  
Population % Change from 2010 to 2020  
Total Population



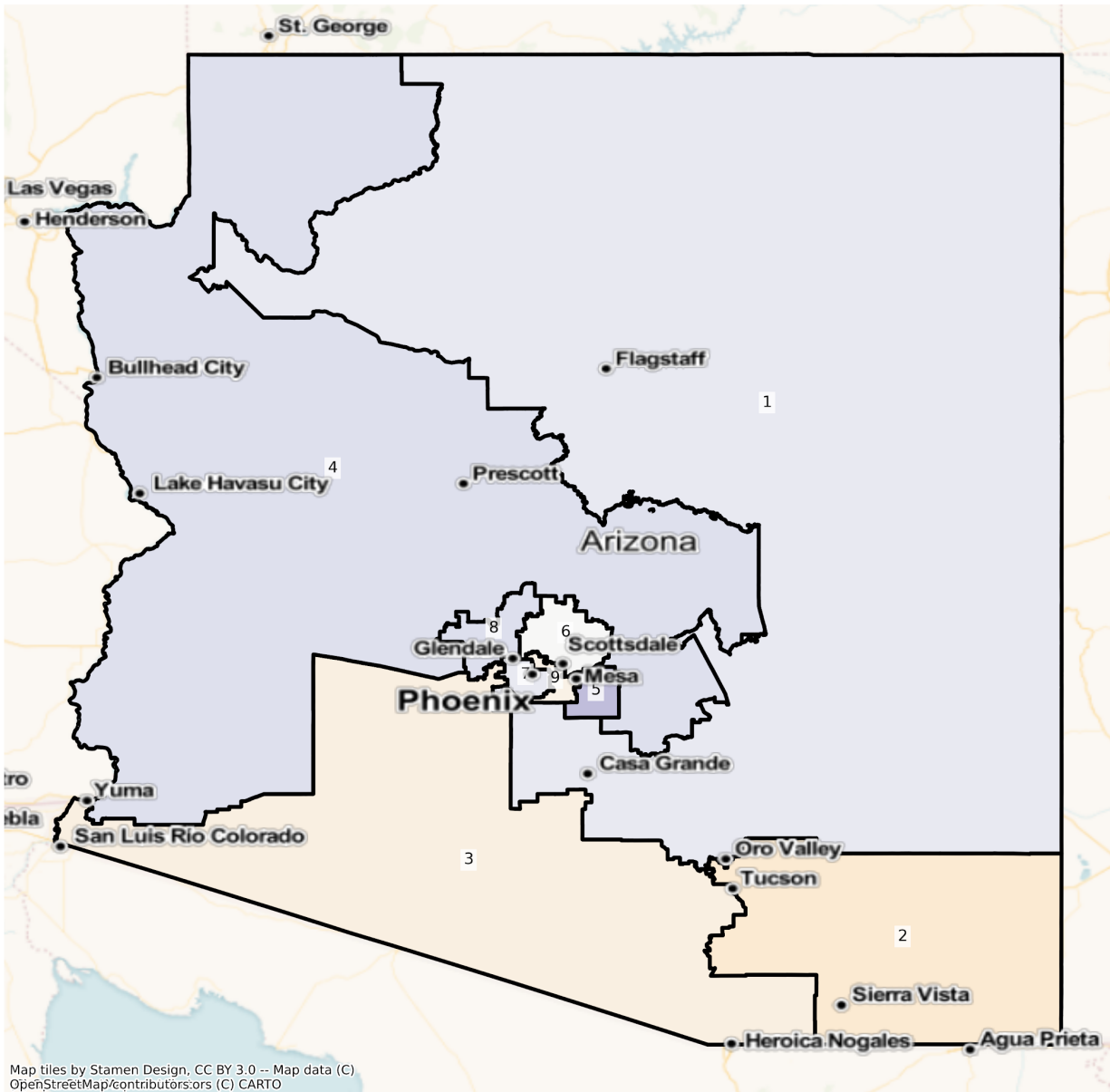
Total Population from 2010 to 2020 at Congressional District Level

DISTRICT	Total Population	Total Population	Total Population
----------	------------------	------------------	------------------

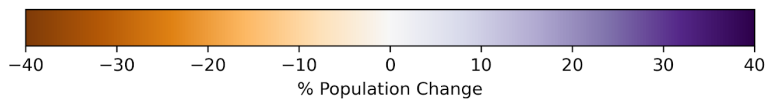
	2010	2020	% Change
1	710,209	760,811	7.12%
2	710,238	744,527	4.83%
3	710,230	777,571	9.48%
4	710,162	804,068	13.22%
5	710,224	881,025	24.05%
6	710,172	786,032	10.68%
7	710,355	788,414	10.99%
8	710,282	837,112	17.86%
9	710,145	771,794	8.68%

# Population by Race and Ethnicity

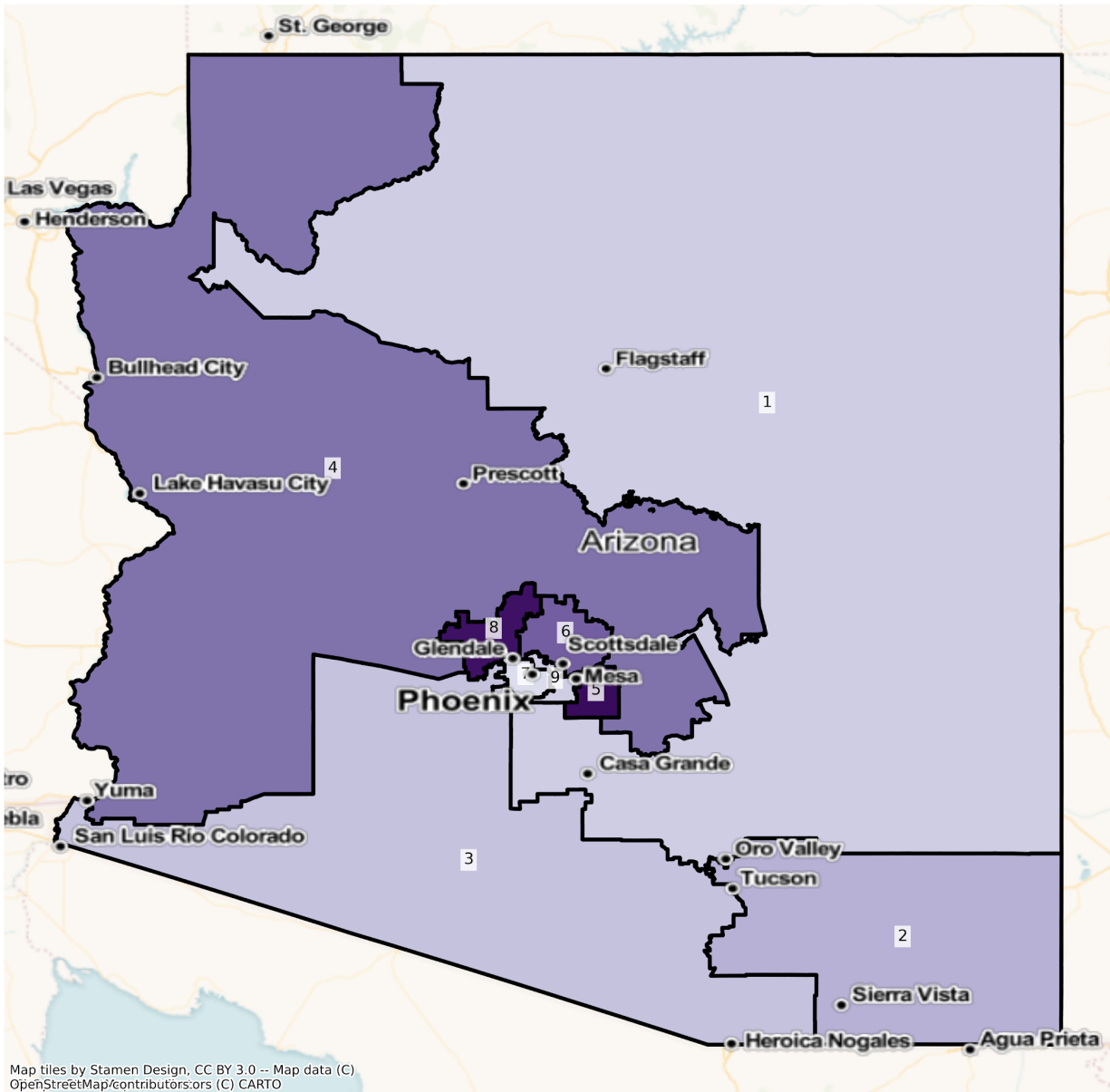
AZ Congressional Districts  
 Population % Change from 2010 to 2020  
 Ethnicity: Not Latino White alone



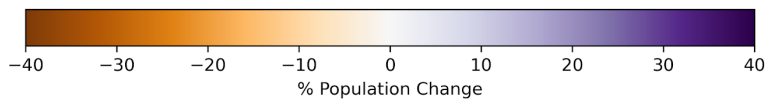
Map tiles by Stamen Design, CC BY 3.0 -- Map data (C) OpenStreetMap/contributors; ors (C) CARTO



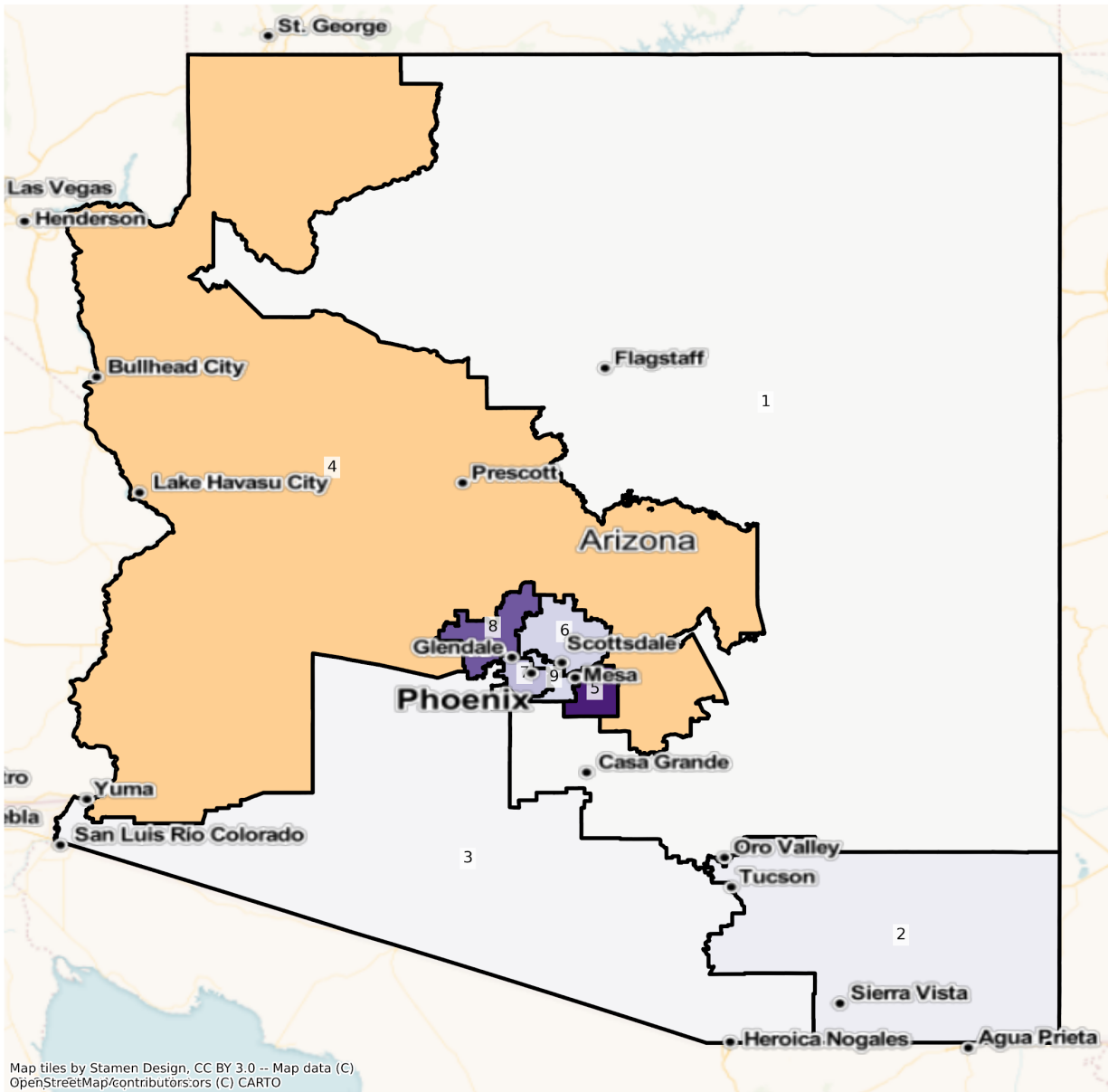
AZ Congressional Districts  
Population % Change from 2010 to 2020  
Ethnicity: Hispanic or Latino



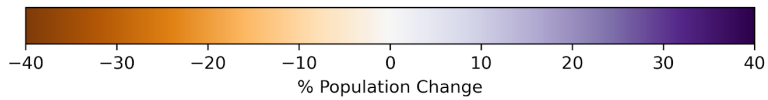
Map tiles by Stamen Design, CC BY 3.0 -- Map data (C) OpenStreetMap/contributors/ors (C) CARTO



AZ Congressional Districts  
 Population % Change from 2010 to 2020  
 Ethnicity: Not Latino American Indian and Alaska Native alone

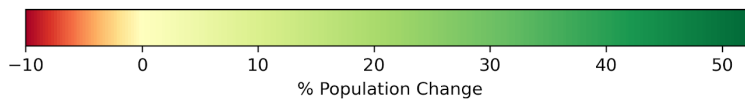
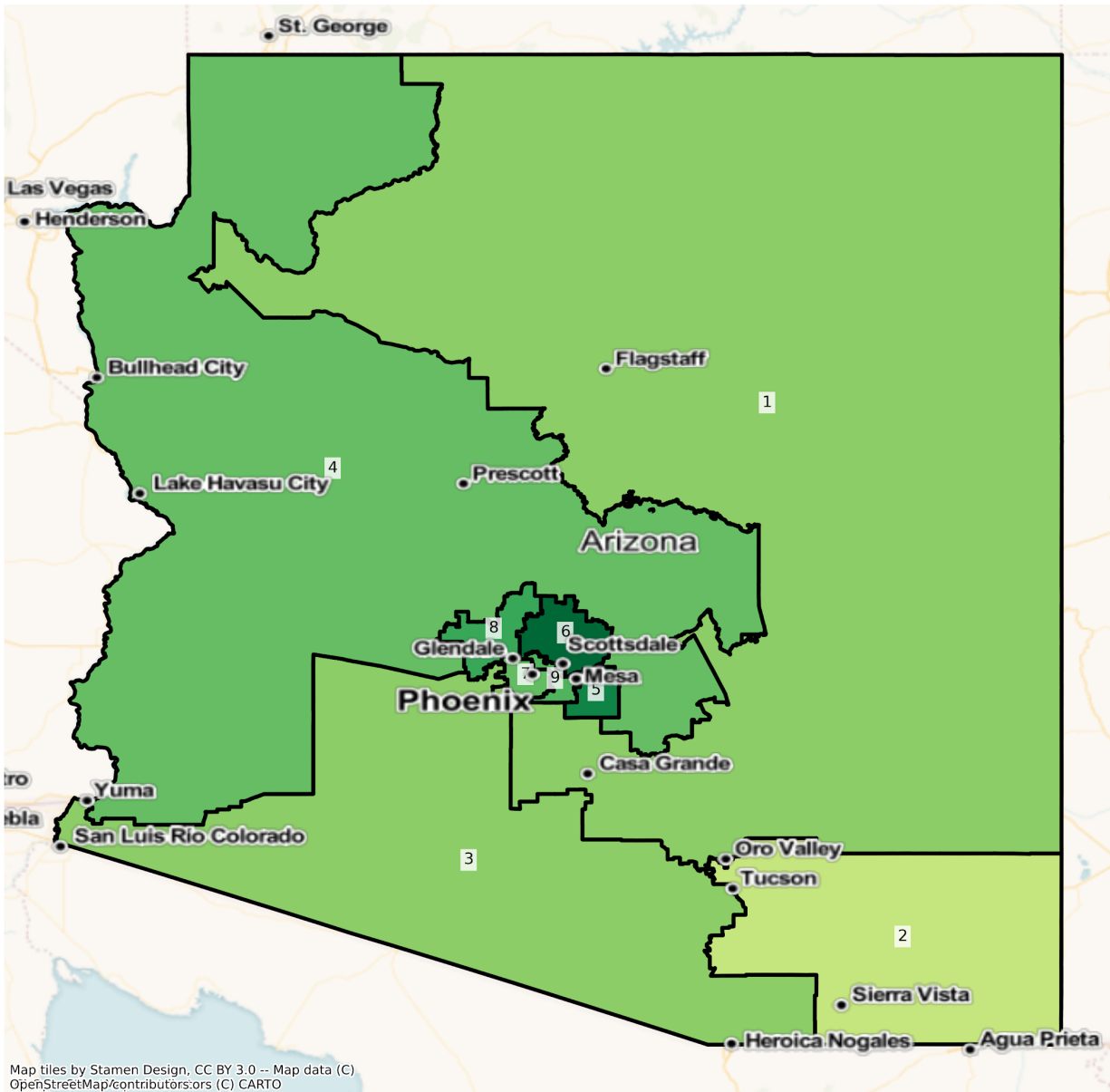


Map tiles by Stamen Design, CC BY 3.0 -- Map data (C) OpenStreetMap/contributors/ors (C) CARTO





AZ Congressional Districts  
Population % Change from 2010 to 2020  
Ethnicity: Not Latino African American alone





				Latino					
1	710,209	147,845	361,479	14,684	162,084	9,574	1,616	778	12,149
2	710,238	183,537	457,255	25,864	6,475	19,295	1,369	1,089	15,354
3	710,230	430,398	206,608	27,375	22,441	12,174	786	1,037	9,411
4	710,162	127,201	538,562	11,065	12,667	7,422	934	679	11,632
5	710,224	118,907	518,678	20,369	6,041	29,791	1,419	850	14,169
6	710,172	107,938	534,903	16,932	11,141	24,930	841	990	12,497
7	710,355	457,075	149,057	61,378	13,930	16,425	1,018	1,021	10,451
8	710,282	131,242	509,352	27,059	5,003	22,080	1,018	890	13,638
9	710,145	191,006	419,753	34,375	17,644	28,818	1,958	1,261	15,330

<sup>1</sup>American Indian and Alaska Native Alone, Not Latino

<sup>2</sup>Native Hawaiian and Pacific Islander Alone, Not Latino

#### 2020 Population by Race and Ethnicity at Congressional District Level

DISTRICT	Total Population	Hispanic or Latino Origin	White Alone, not Latino	African American Alone, not Latino	AIAN Alone, not Latino <sup>1</sup>	Asian Alone, not Latino	NHPI Alone, not Latino <sup>2</sup>	Other Alone, not Latino	Two or More, not Latino
1	760,811	163,013	375,102	18,379	162,015	12,035	1,185	2,748	26,334
2	744,527	210,901	437,174	29,697	6,642	22,825	1,917	3,813	31,558
3	777,571	482,116	201,298	34,340	22,623	14,436	1,299	3,146	18,313
4	804,068	157,737	573,487	14,558	11,205	10,102	1,297	3,096	32,586
5	881,025	163,826	585,752	29,821	8,084	49,655	2,127	3,797	37,963
6	786,032	136,201	534,052	25,869	12,131	41,927	997	3,862	30,993
7	788,414	489,126	154,985	81,113	15,770	22,300	1,787	3,719	19,614
8	837,112	179,099	543,080	37,242	6,347	31,049	1,533	3,534	35,228
9	771,794	210,231	411,472	46,142	19,113	44,508	2,181	3,896	34,251

<sup>1</sup>American Indian and Alaska Native Alone, Not Latino

<sup>2</sup>Native Hawaiian and Pacific Islander Alone, Not Latino

#### Percent Change in Population from 2010 to 2020 by Race and Ethnicity at Congressional District Level

DISTRICT	Total Population	Hispanic or Latino Origin	White Alone, not Latino	African American Alone, not Latino	AIAN Alone, not Latino	Asian Alone, not Latino	NHPI Alone, not Latino	Other Alone, not Latino	Two or More, not Latino
----------	------------------	---------------------------	-------------------------	------------------------------------	------------------------	-------------------------	------------------------	-------------------------	-------------------------

			Latino	not Latino	Latino <sup>1</sup>	Latino	Latino <sup>2</sup>	Latino	
1	7.12%	10.26%	3.77%	25.16%	-0.04%	25.71%	-26.67%	253.21%	116.76%
2	4.83%	14.91%	-4.39%	14.82%	2.58%	18.29%	40.03%	250.14%	105.54%
3	9.48%	12.02%	-2.57%	25.44%	0.81%	18.58%	65.27%	203.38%	94.59%
4	13.22%	24.01%	6.48%	31.57%	-11.54%	36.11%	38.87%	355.96%	180.14%
5	24.05%	37.78%	12.93%	46.40%	33.82%	66.68%	49.89%	346.71%	167.93%
6	10.68%	26.18%	-0.16%	52.78%	8.89%	68.18%	18.55%	290.10%	148.00%
7	10.99%	7.01%	3.98%	32.15%	13.21%	35.77%	75.54%	264.25%	87.68%
8	17.86%	36.46%	6.62%	37.63%	26.86%	40.62%	50.59%	297.08%	158.31%
9	8.68%	10.07%	-1.97%	34.23%	8.33%	54.45%	11.39%	208.96%	123.42%

<sup>1</sup>American Indian and Alaska Native Alone, Not Latino

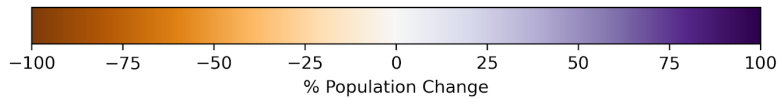
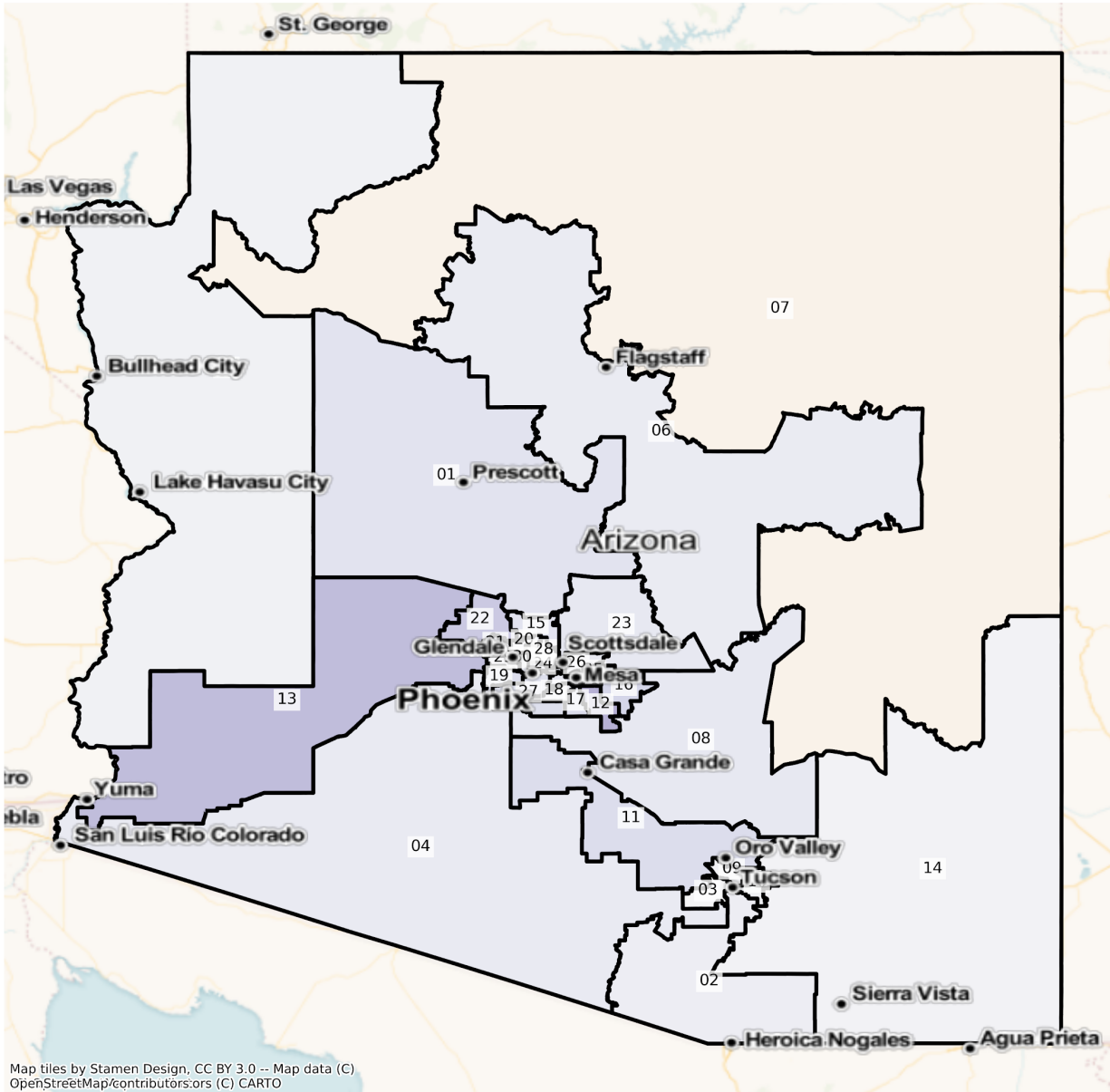
<sup>2</sup>Native Hawaiian and Pacific Islander Alone, Not Latino

## State Senate and State House

The charts below display the percent change in population from 2010 to 2020 for the listed group. Please note that the color bars are fixed to be from -100% to 100% and these maps are displayed in brown to purple. If the percent change in population was outside of this range, the color scheme changes to red to green to indicate a change.

# Total Population

AZ State Legislative Districts  
Population % Change from 2010 to 2020  
Total Population



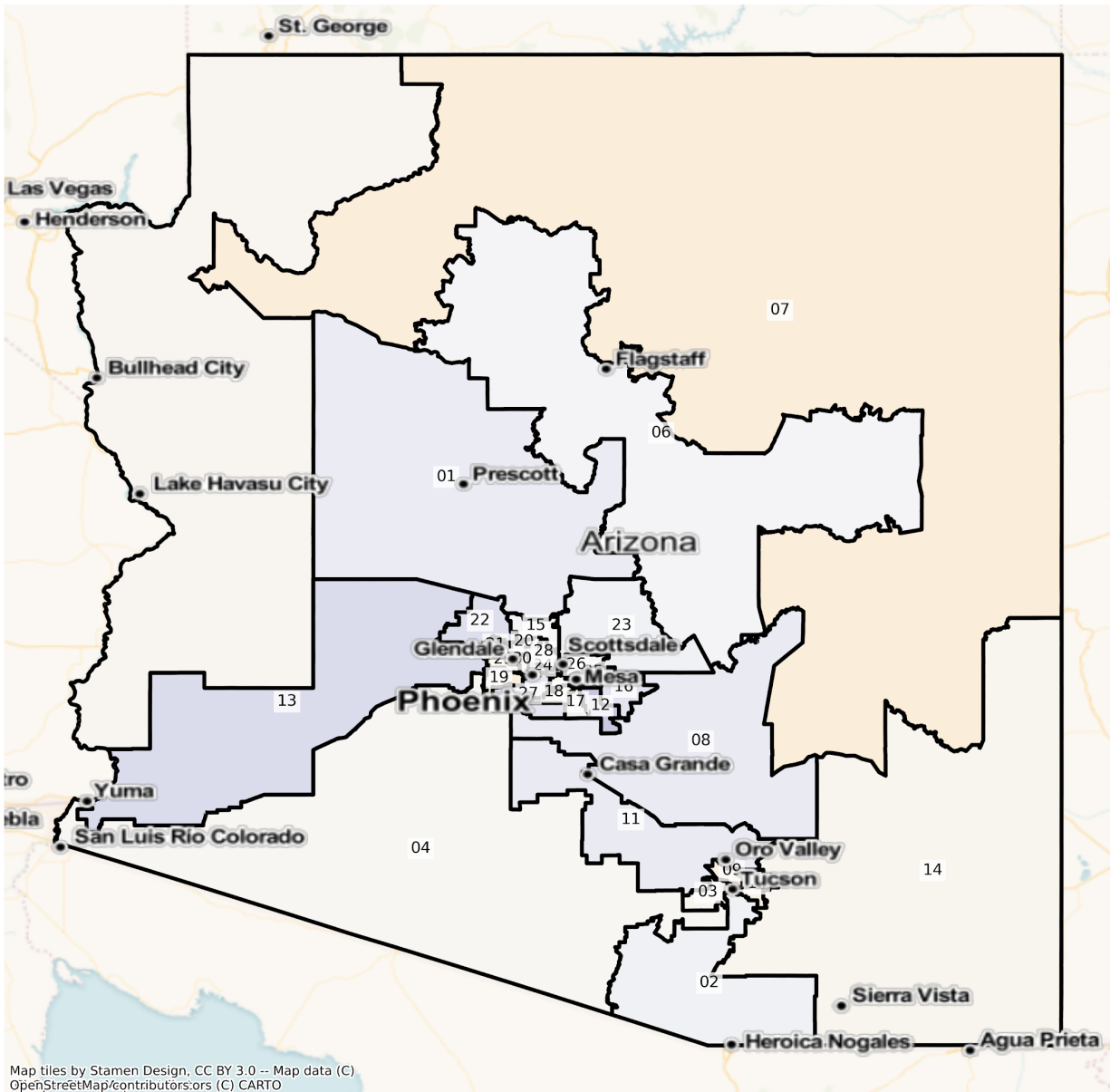
Total Population from 2010 to 2020 at State Senate and House District Level

DISTRICT	Total Population 2010	Total Population 2020	Total Population % Change
----------	--------------------------	--------------------------	------------------------------

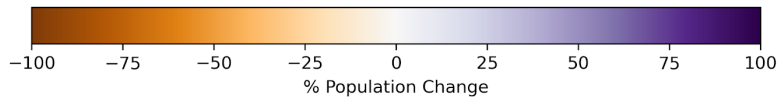
1	216,442	246,608	13.94%
2	204,615	217,828	6.46%
3	204,613	207,569	1.44%
4	204,143	222,573	9.03%
5	219,040	228,150	4.16%
6	214,242	232,171	8.37%
7	203,028	194,163	-4.37%
8	208,413	229,764	10.24%
9	213,224	220,100	3.22%
10	211,073	220,229	4.34%
11	213,386	250,685	17.48%
12	221,735	305,490	37.77%
13	211,638	280,966	32.76%
14	217,693	224,556	3.15%
15	214,941	244,036	13.54%
16	220,157	268,268	21.85%
17	221,174	259,198	17.19%
18	218,546	232,183	6.24%
19	207,094	242,889	17.28%
20	218,167	238,843	9.48%
21	216,242	238,394	10.24%
22	215,975	273,380	26.58%
23	213,386	236,346	10.76%
24	206,659	225,034	8.89%
25	220,795	241,516	9.38%
26	213,659	237,009	10.93%
27	204,326	236,799	15.89%
28	218,787	231,304	5.72%
29	211,061	233,933	10.84%
30	207,763	231,370	11.36%

# Population by Race and Ethnicity

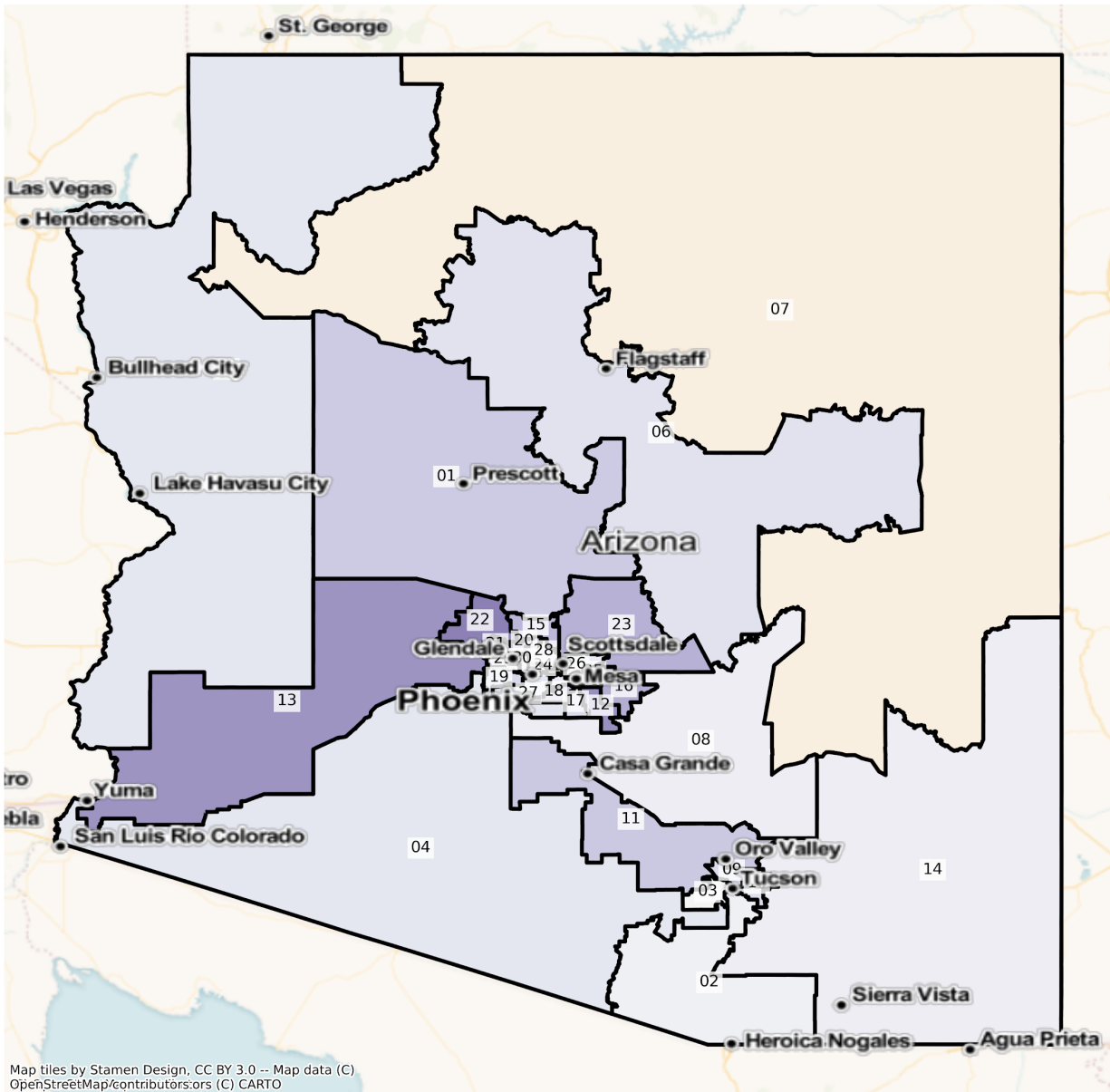
AZ State Legislative Districts  
Population % Change from 2010 to 2020  
Ethnicity: Not Latino White alone



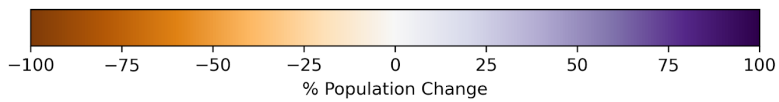
Map tiles by Stamen Design, CC BY 3.0 -- Map data (C) OpenStreetMap/contributors; ors (C) CARTO



AZ State Legislative Districts  
 Population % Change from 2010 to 2020  
 Ethnicity: Hispanic or Latino

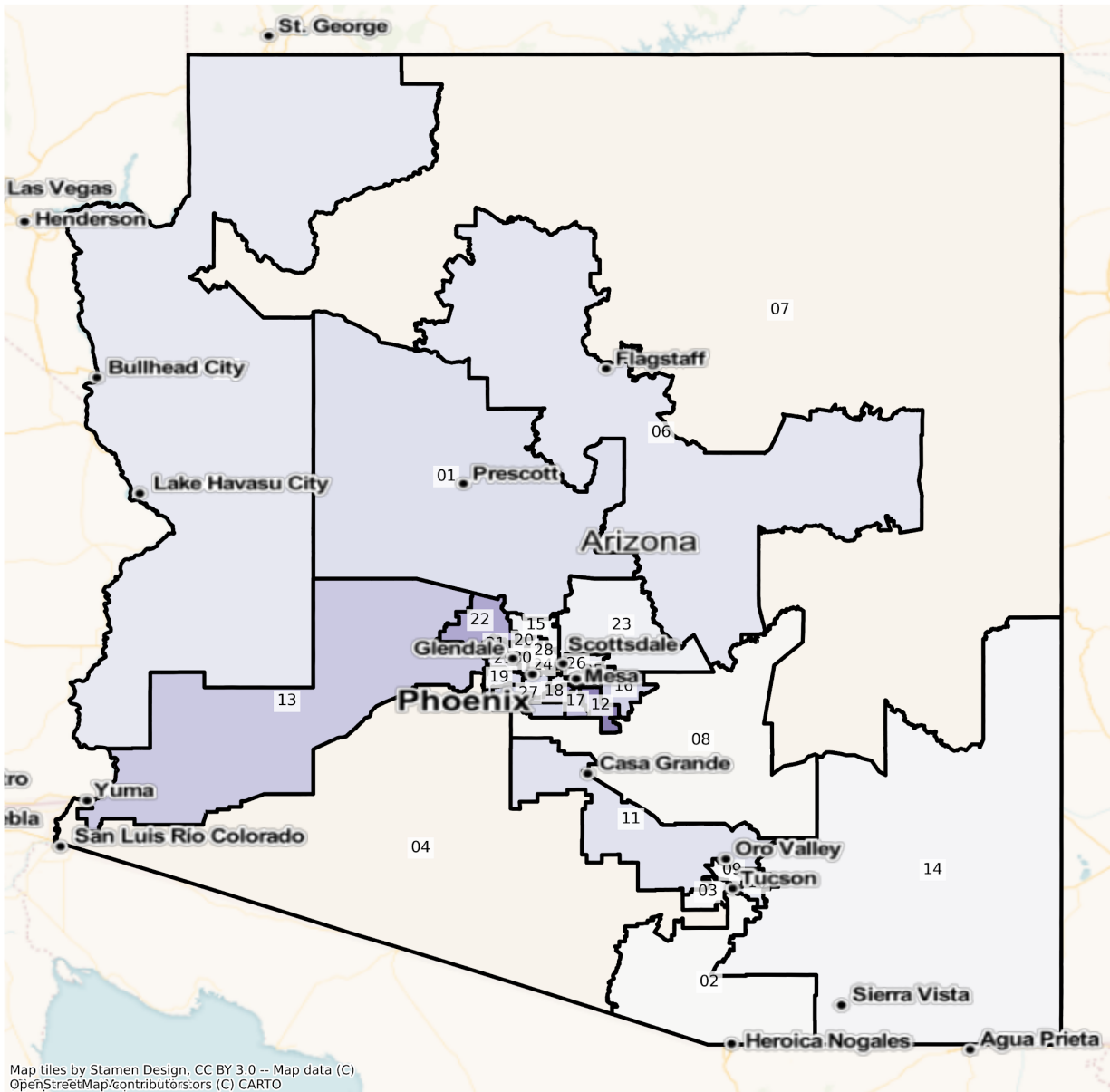


Map tiles by Stamen Design, CC BY 3.0 -- Map data (C) OpenStreetMap/contributors/ors (C) CARTO

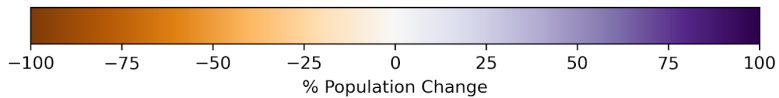




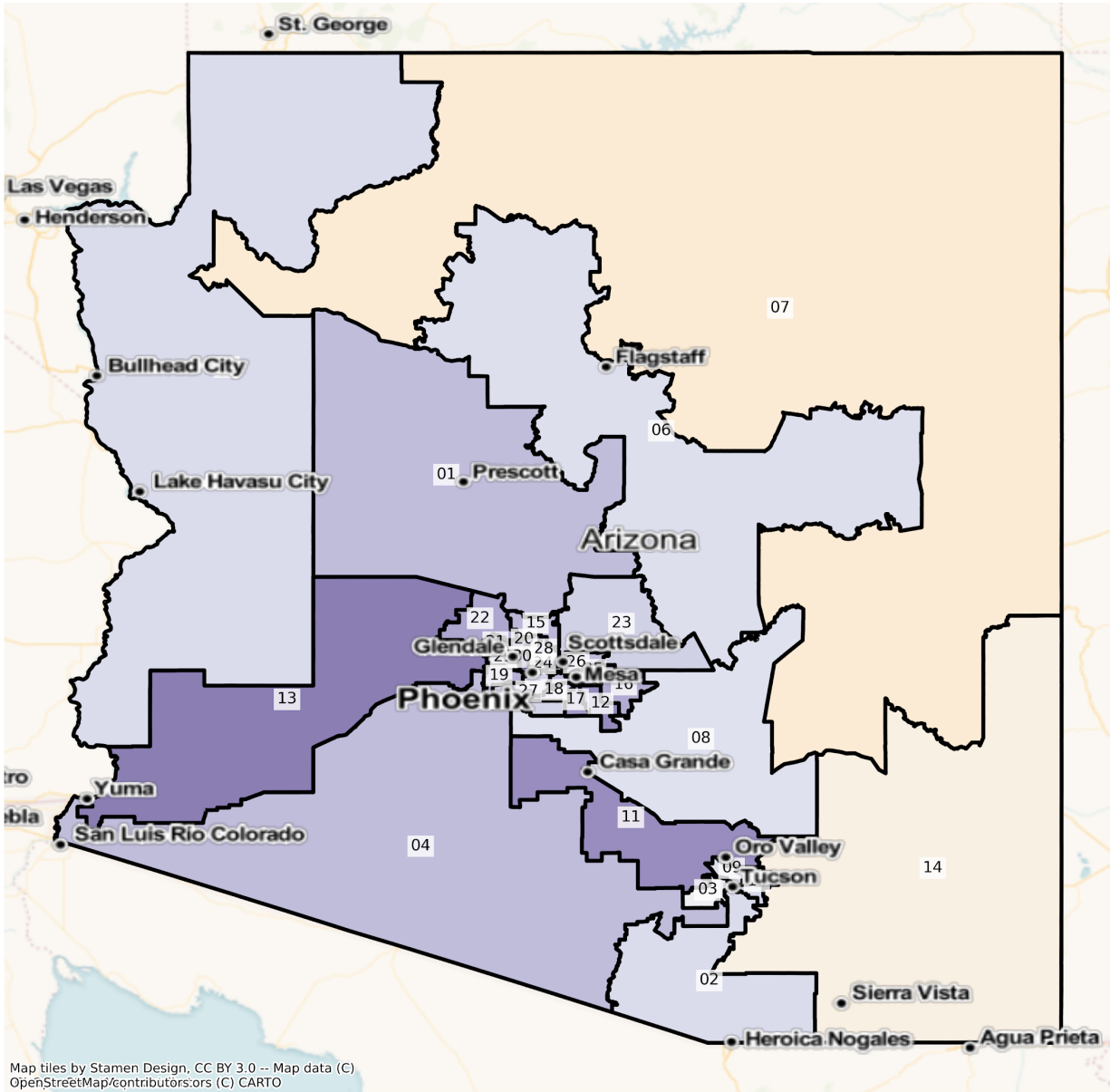
AZ State Legislative Districts  
 Population % Change from 2010 to 2020  
 Ethnicity: Not Latino American Indian and Alaska Native alone



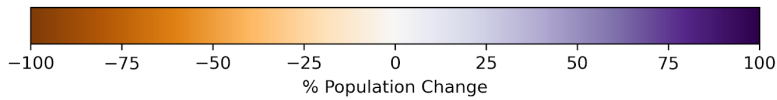
Map tiles by Stamen Design, CC BY 3.0 -- Map data (C)  
 OpenStreetMap/contributors/ors (C) CARTO



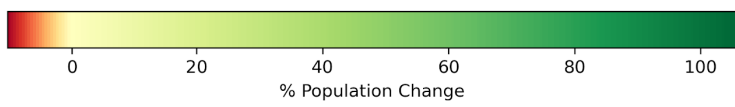
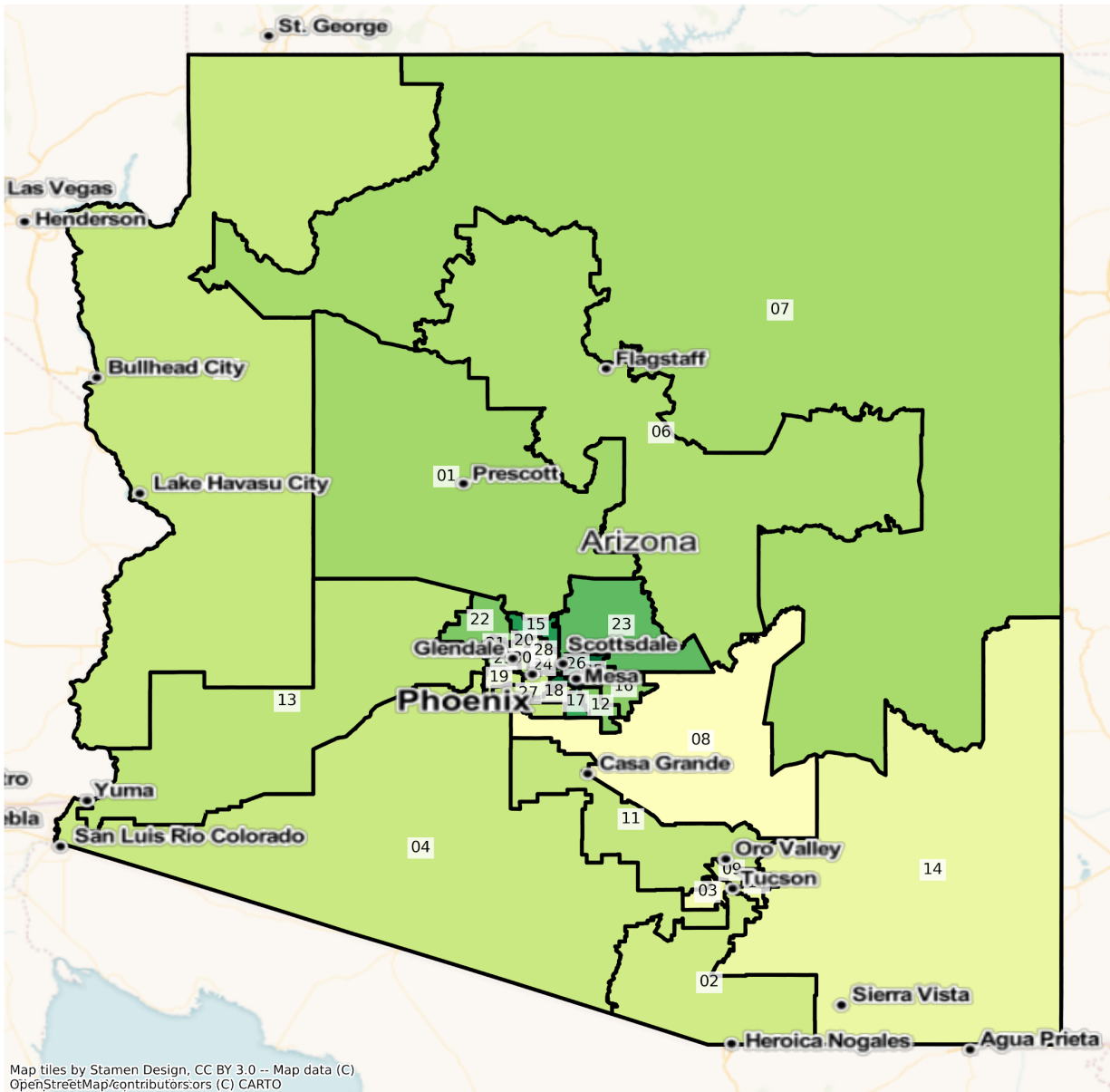
AZ State Legislative Districts  
 Population % Change from 2010 to 2020  
 Ethnicity: Not Latino African American alone



Map tiles by Stamen Design, CC BY 3.0 -- Map data (C)  
 OpenStreetMap/contributors/ors (C) CARTO

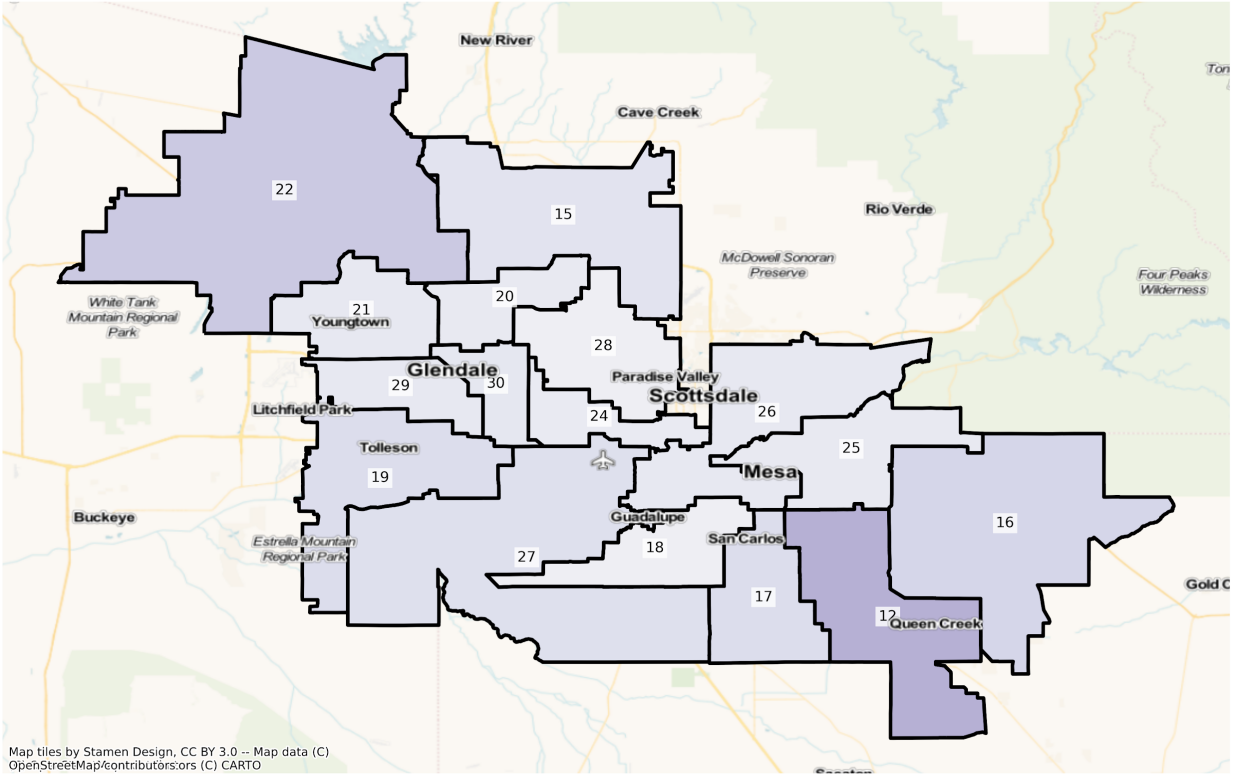


AZ State Legislative Districts  
Population % Change from 2010 to 2020  
Ethnicity: Not Latino Asian alone

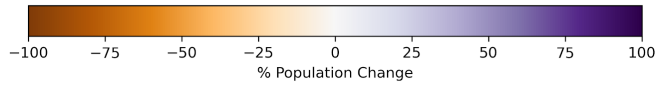


Phoenix

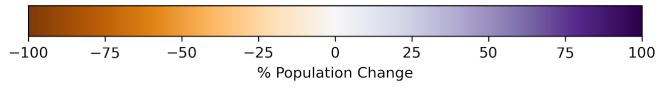
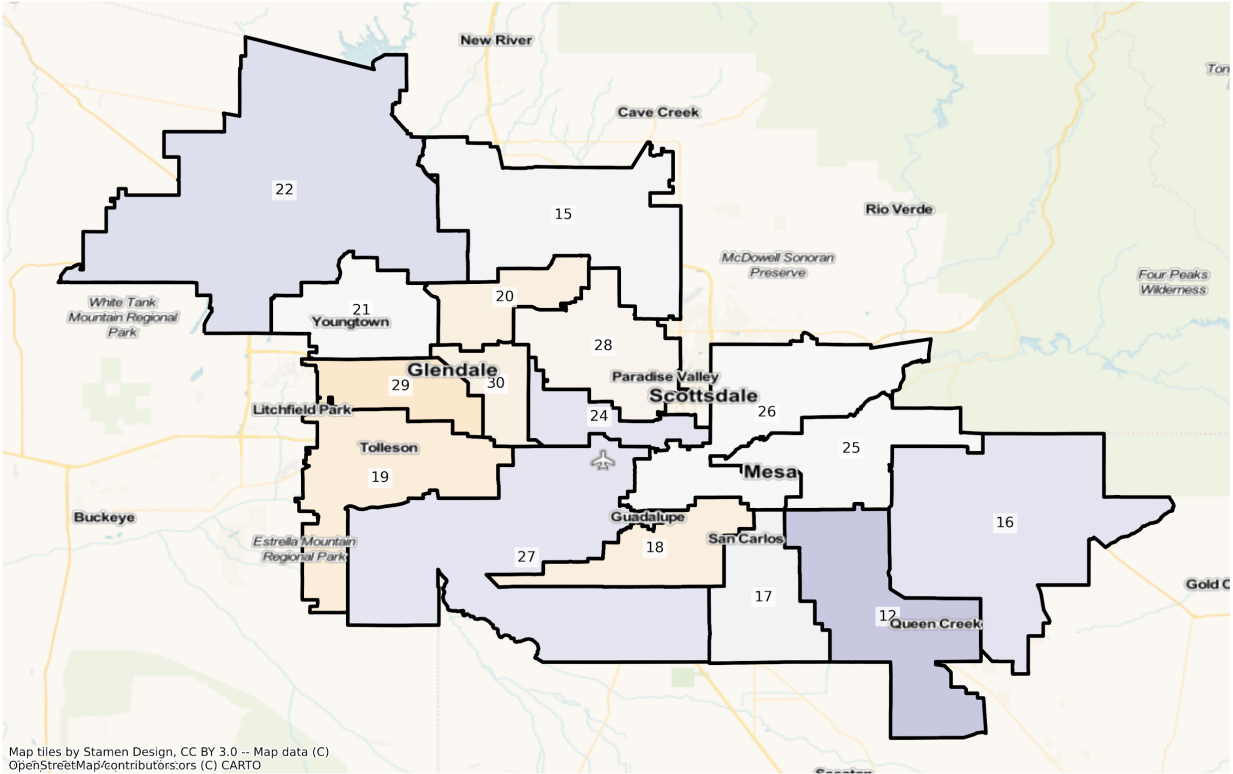
AZ Phoenix State Legislative Districts  
Population % Change from 2010 to 2020  
Total Population



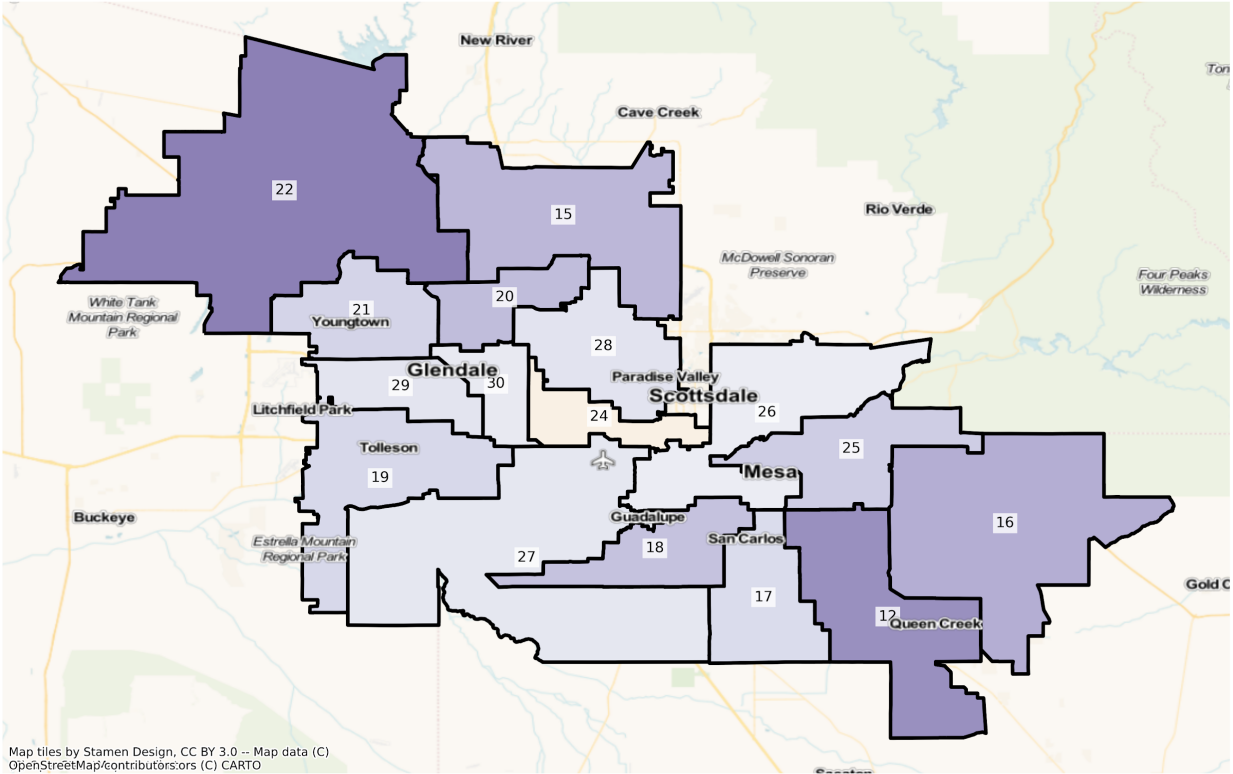
Map tiles by Stamen Design, CC BY 3.0 -- Map data (C)  
OpenStreetMap/contributors;ors (C) CARTO



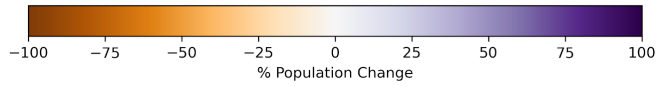
AZ Phoenix State Legislative Districts  
Population % Change from 2010 to 2020  
Ethnicity: Not Latino White alone



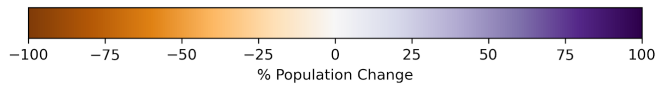
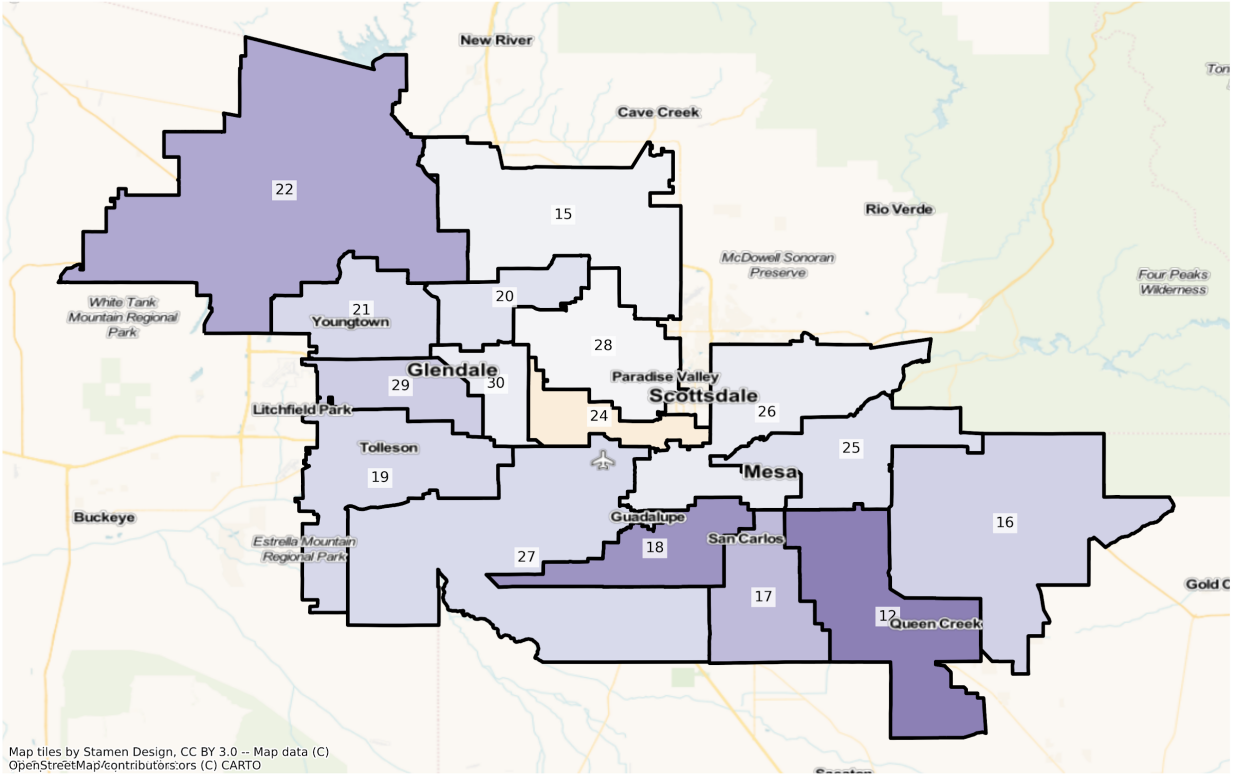
AZ Phoenix State Legislative Districts  
Population % Change from 2010 to 2020  
Ethnicity: Hispanic or Latino



Map tiles by Stamen Design, CC BY 3.0 -- Map data (C)  
OpenStreetMap/contributors/srs (C) CARTO

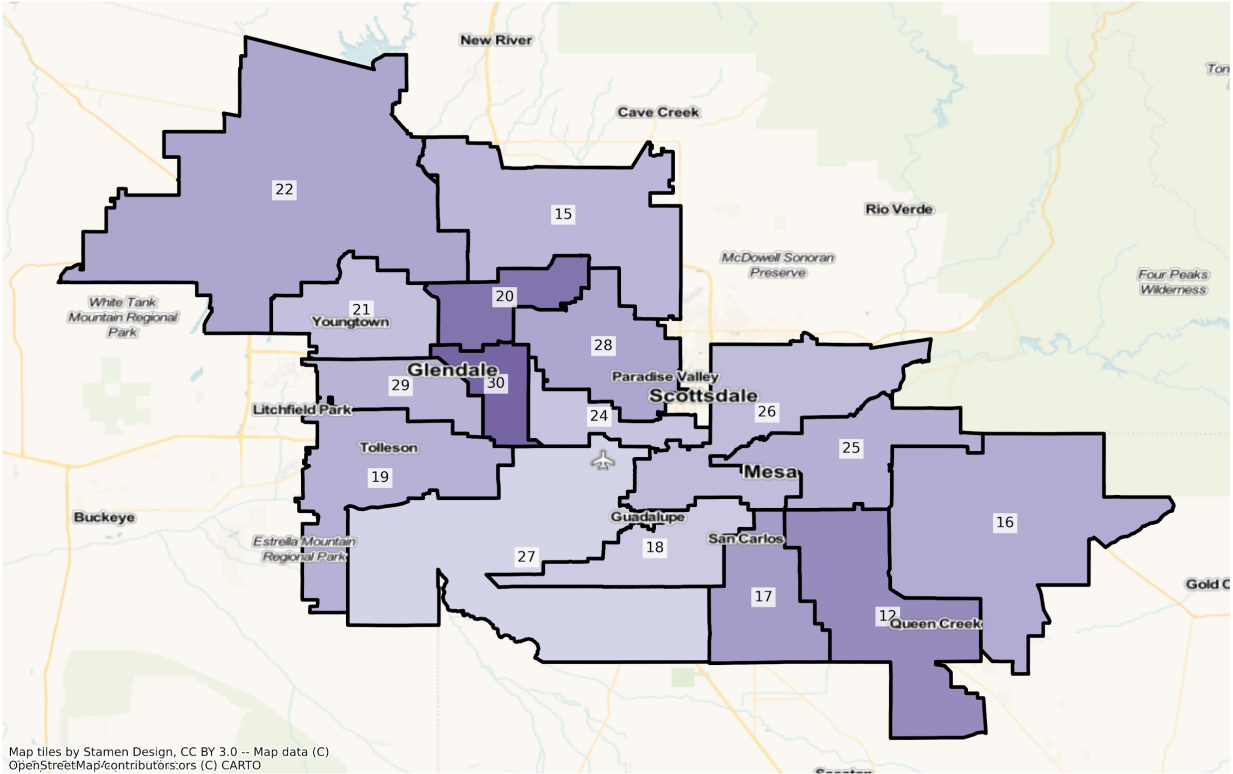


AZ Phoenix State Legislative Districts  
Population % Change from 2010 to 2020  
Ethnicity: Not Latino American Indian and Alaska Native alone

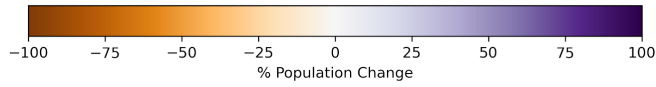




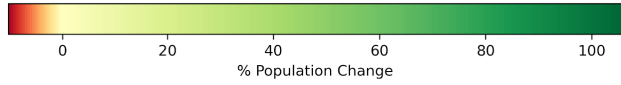
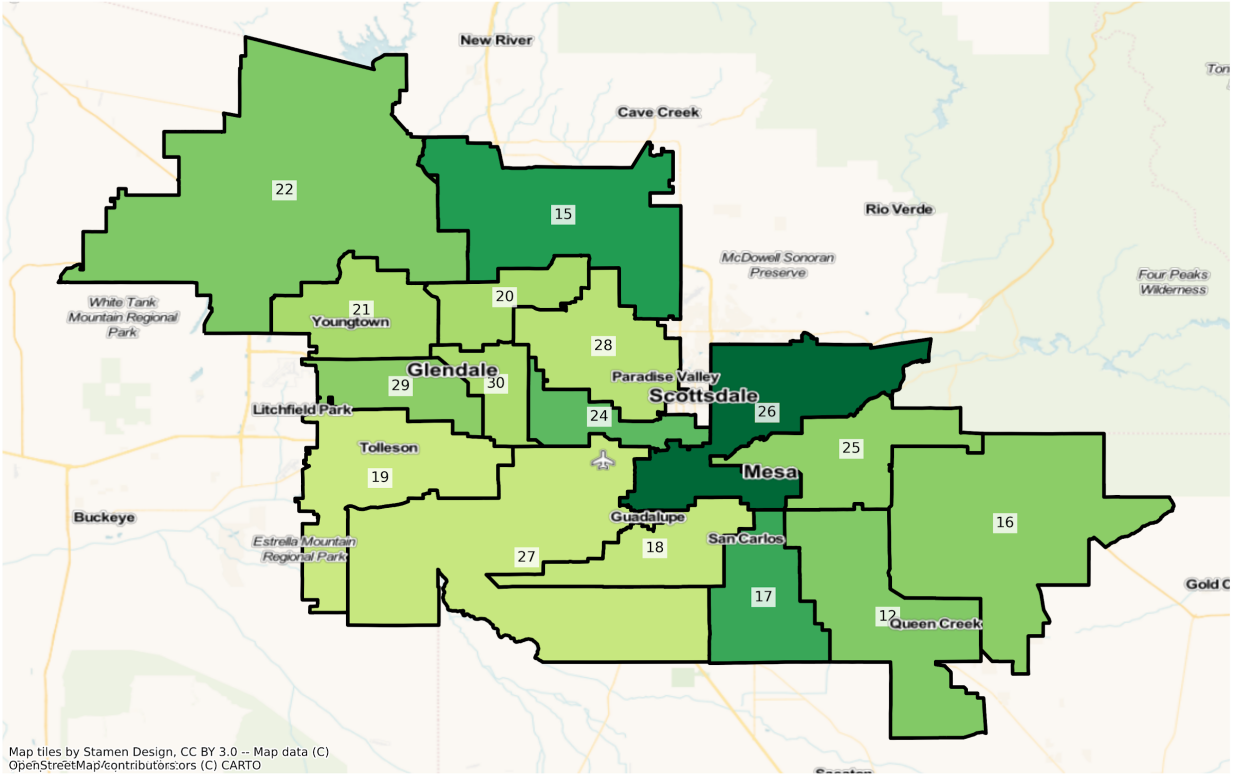
AZ Phoenix State Legislative Districts  
Population % Change from 2010 to 2020  
Ethnicity: Not Latino African American alone



Map tiles by Stamen Design, CC BY 3.0 -- Map data (C) OpenStreetMap/contributors/sors (C) CARTO

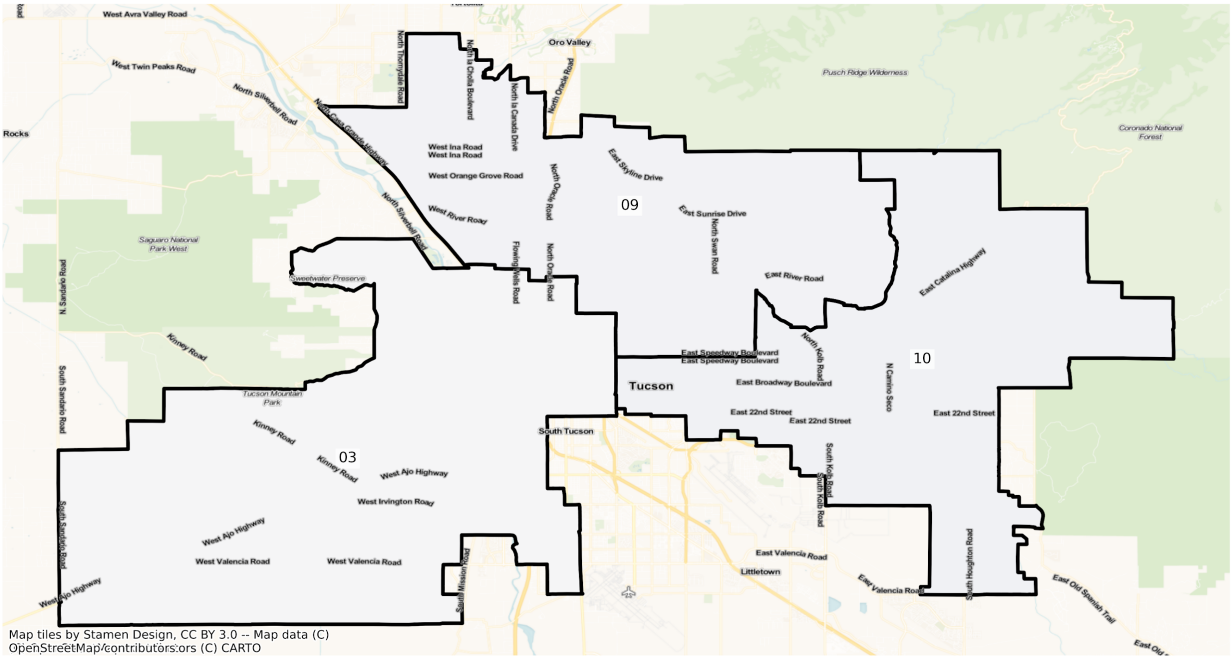


AZ Phoenix State Legislative Districts  
Population % Change from 2010 to 2020  
Ethnicity: Not Latino Asian alone

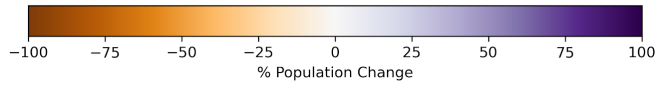


Tucson

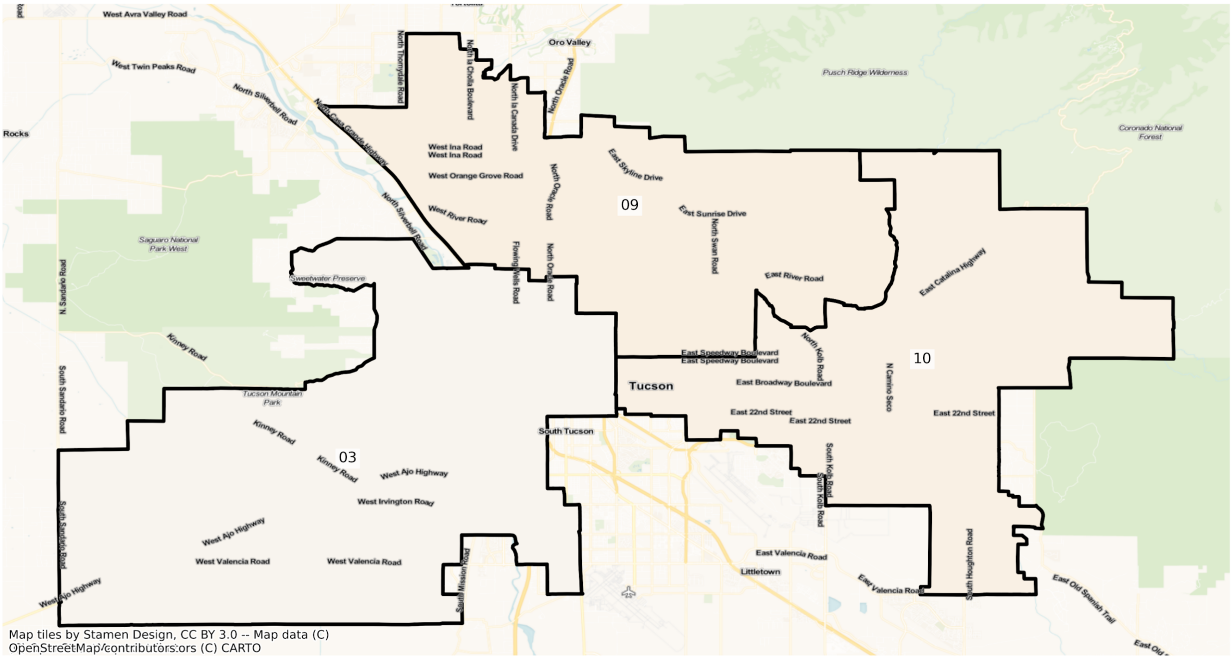
# AZ Tucson State Legislative Districts Population % Change from 2010 to 2020 Total Population



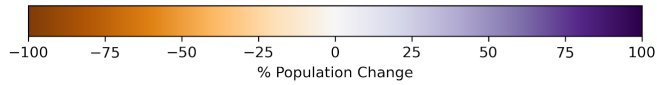
Map tiles by Stamen Design, CC BY 3.0 -- Map data (C) OpenStreetMap/contributors/ors (C) CARTO



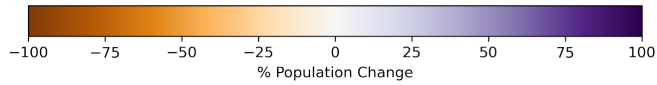
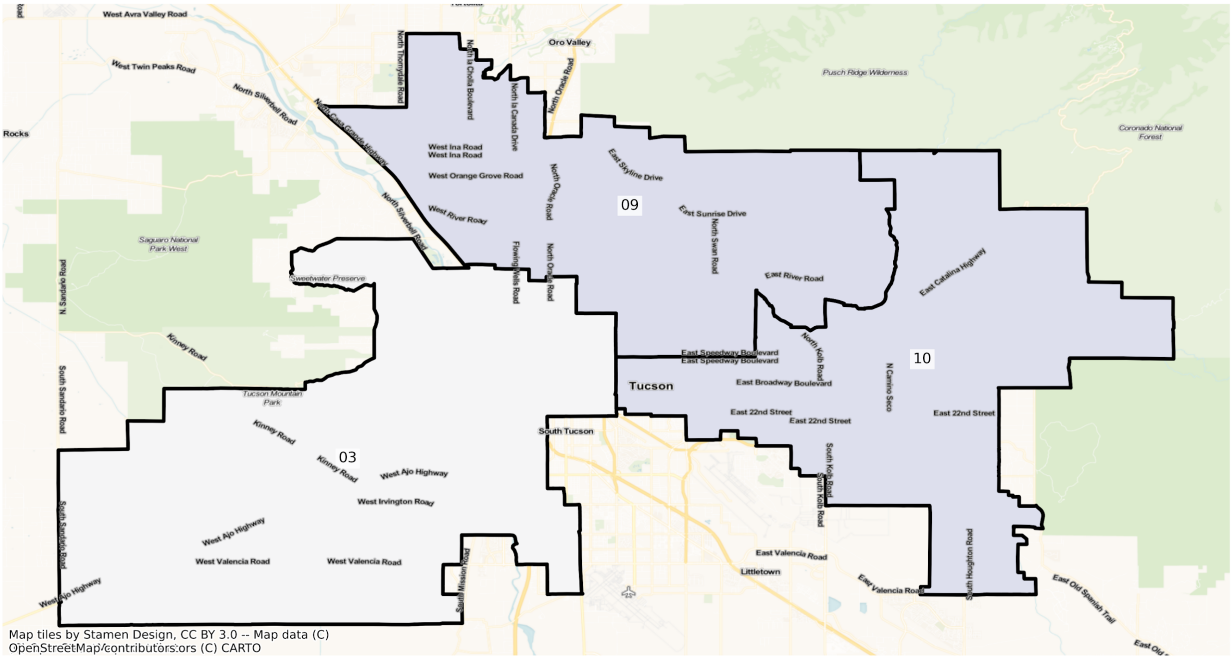
AZ Tucson State Legislative Districts  
 Population % Change from 2010 to 2020  
 Ethnicity: Not Latino White alone



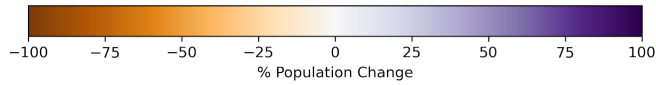
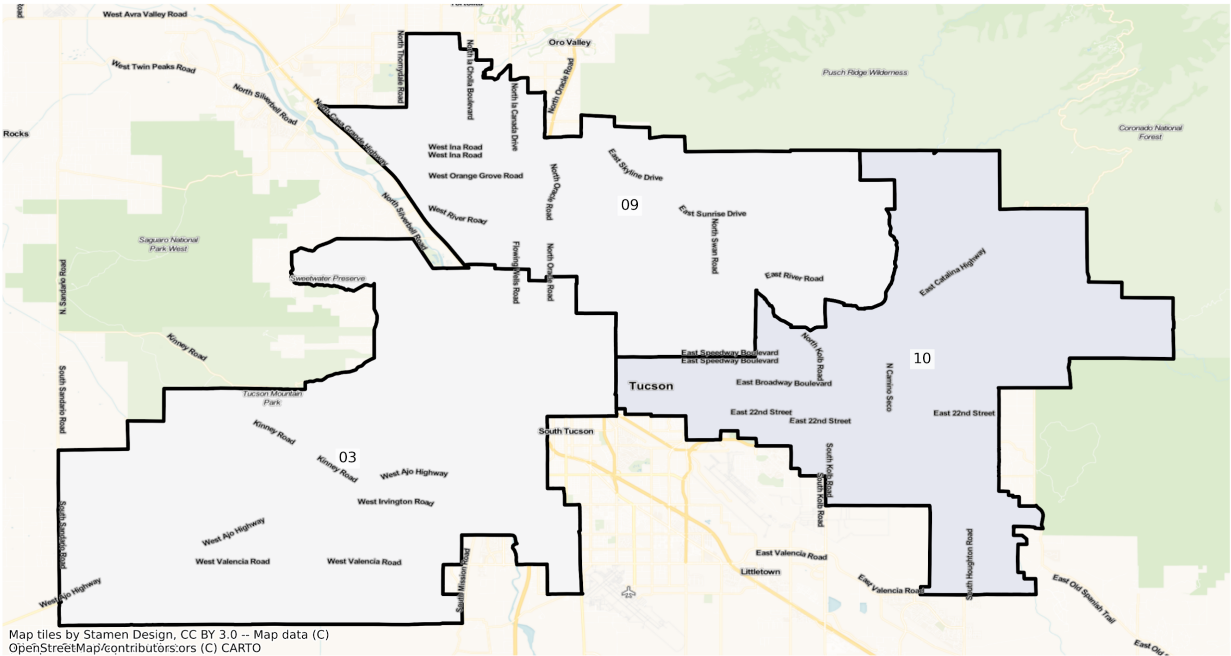
Map tiles by Stamen Design, CC BY 3.0 -- Map data (C) OpenStreetMap/contributors/ors (C) CARTO



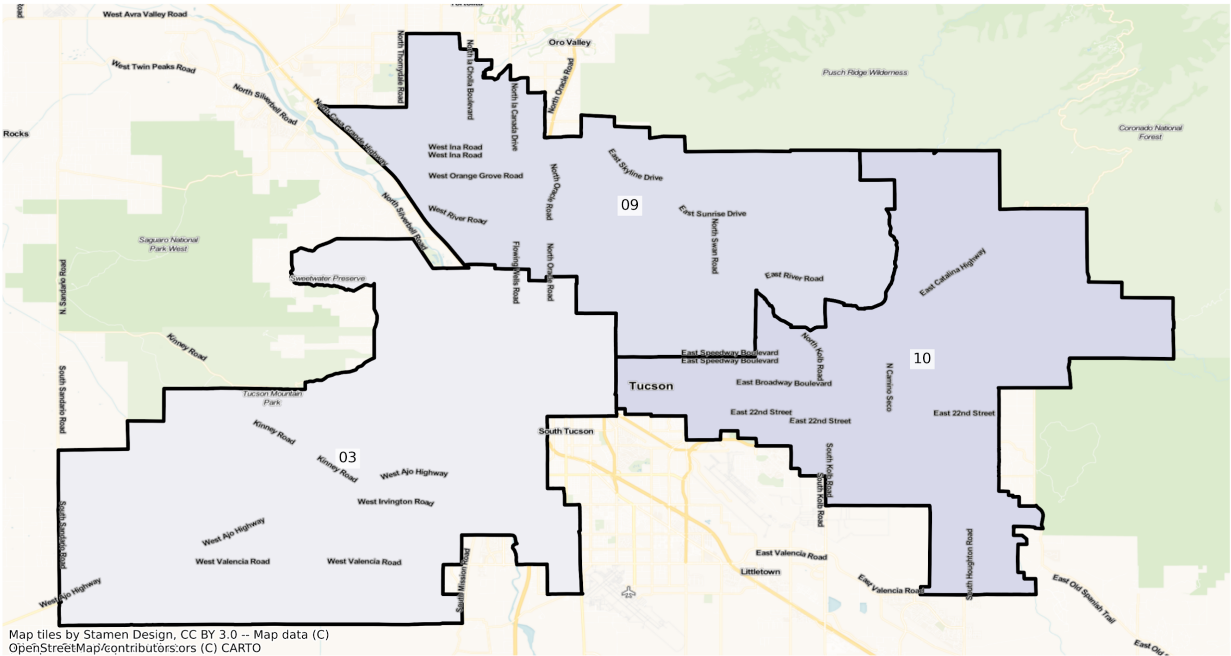
AZ Tucson State Legislative Districts  
 Population % Change from 2010 to 2020  
 Ethnicity: Hispanic or Latino



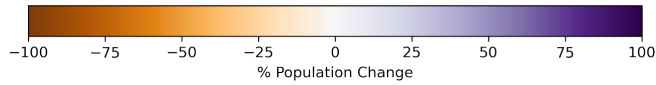
AZ Tucson State Legislative Districts  
 Population % Change from 2010 to 2020  
 Ethnicity: Not Latino American Indian and Alaska Native alone



AZ Tucson State Legislative Districts  
 Population % Change from 2010 to 2020  
 Ethnicity: Not Latino African American alone

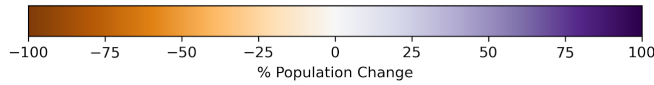
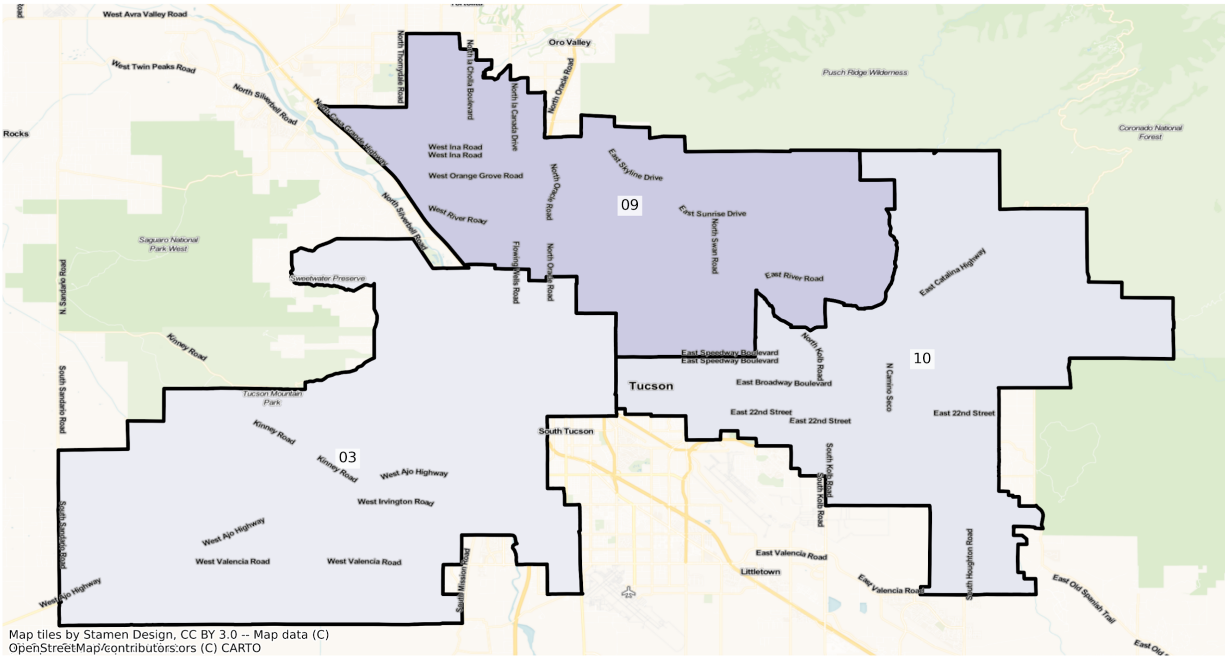


Map tiles by Stamen Design, CC BY 3.0 -- Map data (C) OpenStreetMap/contributors/ors (C) CARTO





AZ Tucson State Legislative Districts  
 Population % Change from 2010 to 2020  
 Ethnicity: Not Latino Asian alone



2010 Population by Race and Ethnicity at State Senate and House District Level

DISTRICT	Total Population	Hispanic or Latino Origin	White Alone, not Latino	African American Alone, not Latino	AIAN Alone, not Latino <sup>1</sup>	Asian Alone, not Latino	NHPI Alone, not Latino <sup>2</sup>	Other Alone, not Latino	Two or More, not Latino
1	216,442	24,035	181,958	1,913	1,789	2,812	205	222	3,508
2	204,615	121,900	69,116	5,909	2,702	2,302	191	201	2,294
3	204,613	115,569	67,222	6,053	7,611	4,750	189	294	2,925
4	204,143	123,594	58,192	5,891	11,559	2,083	198	239	2,387
5	219,040	34,316	172,081	1,822	4,609	2,106	320	156	3,630
6	214,242	33,172	159,160	2,004	13,062	2,407	230	255	3,952
7	203,028	13,882	50,374	914	133,830	756	78	82	3,112

8	208,413	72,455	104,145	9,211	14,534	3,042	1,261	274	3,491
9	213,224	46,661	146,025	5,917	2,065	7,573	317	369	4,297
10	211,073	49,128	138,868	9,556	1,807	6,076	425	306	4,907
11	213,386	48,250	145,098	7,160	3,108	5,124	273	335	4,038
12	221,735	34,578	162,476	6,797	1,385	10,823	377	300	4,999
13	211,638	66,090	126,907	7,530	1,757	4,990	299	309	3,756
31	217,693	67,082	132,552	7,070	1,851	3,654	506	333	4,645
15	214,941	22,035	172,110	4,086	1,359	10,720	254	320	4,057
16	220,157	36,222	169,113	4,816	1,776	3,734	363	183	3,950
17	221,174	47,472	140,660	9,238	2,221	16,160	362	295	4,766
18	218,546	31,630	153,549	10,188	3,190	13,992	549	385	5,063
19	207,094	134,862	45,004	16,061	2,350	4,861	365	358	3,233
20	218,167	46,856	148,114	8,325	2,947	6,714	373	310	4,528
21	216,242	53,053	143,644	8,819	1,562	4,485	307	257	4,115
22	215,975	22,391	175,560	5,822	839	7,117	276	257	3,713
23	213,386	12,211	186,127	2,833	1,616	6,889	168	260	3,282
24	206,659	85,381	92,695	13,046	6,716	4,291	330	366	3,834
25	220,795	43,023	160,255	5,837	3,655	3,397	536	298	3,794
26	213,659	82,251	96,917	11,034	10,155	7,254	1,031	400	4,617
27	204,326	116,579	40,167	29,984	7,628	5,762	436	320	3,450
28	218,787	48,112	152,193	5,919	2,958	5,492	244	297	3,572
29	211,061	142,923	45,815	12,402	2,119	4,244	184	298	3,076
30	207,763	119,436	59,550	12,944	4,666	6,899	312	316	3,640

<sup>1</sup>American Indian and Alaska Native Alone, Not Latino

<sup>2</sup>Native Hawaiian and Pacific Islander Alone, Not Latino

#### 2020 Population by Race and Ethnicity at State Senate and House District Level

DISTRICT	Total Population	Hispanic or Latino Origin	White Alone, not Latino	African American Alone, not Latino	AIAN Alone, not Latino <sup>1</sup>	Asian Alone, not Latino	NHPI Alone, not Latino <sup>2</sup>	Other Alone, not Latino	Two or More, not Latino
1	246,608	30,375	195,997	2,539	2,080	4,000	309	1,098	10,210

2	217,828	128,023	71,832	6,972	2,698	2,860	269	729	4,445
3	207,569	116,606	65,535	6,412	7,725	5,111	256	743	5,181
4	222,573	137,558	57,287	7,801	11,148	2,642	265	790	5,082
5	228,150	38,237	169,004	2,155	5,078	2,706	406	729	9,835
6	232,171	37,986	162,736	2,338	14,621	3,310	384	1,063	9,733
7	194,163	12,955	45,824	817	128,756	1,068	72	321	4,350
8	229,764	77,402	113,908	10,616	14,345	3,077	577	812	9,027
9	220,100	54,811	136,282	6,883	2,108	9,527	532	1,112	8,845
10	220,229	57,273	130,644	11,552	2,015	6,762	568	1,164	10,251
11	250,685	61,178	156,615	10,752	3,554	6,615	493	1,207	10,271
12	305,490	51,732	208,156	10,272	2,147	16,670	579	1,370	14,564
13	280,966	97,684	150,188	11,711	2,233	6,582	592	1,269	10,707
31	224,556	71,737	128,865	6,663	1,894	4,072	571	1,164	9,590
15	244,036	29,615	175,918	5,505	1,418	19,497	256	1,303	10,524
16	268,268	50,222	191,264	6,700	2,201	5,639	660	1,031	10,551
17	259,198	56,354	145,115	13,390	2,952	28,323	522	1,114	11,428
18	232,183	41,264	142,257	12,826	4,731	18,186	587	1,154	11,178
19	242,889	163,160	40,789	22,073	2,832	6,183	746	1,218	5,888
20	238,843	62,158	138,342	13,264	3,407	9,453	508	1,280	10,431
21	238,394	64,898	142,763	11,534	1,889	6,302	429	985	9,594
22	273,380	34,697	205,607	8,256	1,186	11,010	386	1,004	11,234
23	236,346	16,767	193,404	3,514	1,701	11,333	178	1,043	8,406
24	225,034	80,115	104,350	16,827	6,134	7,097	470	1,227	8,814
25	241,516	53,919	159,137	8,063	4,273	5,057	756	1,086	9,225
26	237,009	88,096	96,274	14,598	10,979	14,921	1,153	1,172	9,816
27	236,799	129,958	45,069	36,616	9,124	7,409	833	1,155	6,635
28	231,304	54,707	147,089	8,380	3,022	7,390	267	1,197	9,252
29	233,933	161,583	39,941	16,933	2,662	6,384	319	828	5,283
30	231,370	131,180	56,210	21,199	5,017	9,651	380	1,243	6,490

<sup>1</sup>American Indian and Alaska Native Alone, Not Latino

<sup>2</sup>Native Hawaiian and Pacific Islander Alone, Not Latino

Percent Change in Population from 2010 to 2020 by Race and Ethnicity at State Senate and House  
District Level

DISTRICT	Total Population	Hispanic or Latino Origin	White Alone, not Latino	African American Alone, not Latino	AIAN Alone, not Latino <sup>1</sup>	Asian Alone, not Latino	NHPI Alone, not Latino <sup>2</sup>	Other Alone, not Latino	Two or More, not Latino
1	13.94%	26.38%	7.72%	32.72%	16.27%	42.25%	50.73%	394.59%	191.05%
2	6.46%	5.02%	3.93%	17.99%	-0.15%	24.24%	40.84%	262.69%	93.77%
3	1.44%	0.90%	-2.51%	5.93%	1.50%	7.60%	35.45%	152.72%	77.13%
4	9.03%	11.30%	-1.56%	32.42%	-3.56%	26.84%	33.84%	230.54%	112.90%
5	4.16%	11.43%	-1.79%	18.28%	10.18%	28.49%	26.88%	367.31%	170.94%
6	8.37%	14.51%	2.25%	16.67%	11.94%	37.52%	66.96%	316.86%	146.28%
7	-4.37%	-6.68%	-9.03%	-10.61%	-3.79%	41.27%	-7.69%	291.46%	39.78%
8	10.24%	6.83%	9.37%	15.25%	-1.30%	1.15%	-54.24%	196.35%	158.58%
9	3.22%	17.47%	-6.67%	16.33%	2.08%	25.80%	67.82%	201.36%	105.84%
10	4.34%	16.58%	-5.92%	20.89%	11.51%	11.29%	33.65%	280.39%	108.91%
11	17.48%	26.79%	7.94%	50.17%	14.35%	29.10%	80.59%	260.30%	154.36%
12	37.77%	49.61%	28.11%	51.13%	55.02%	54.02%	53.58%	356.67%	191.34%
13	32.76%	47.80%	18.34%	55.52%	27.09%	31.90%	97.99%	310.68%	185.06%
31	3.15%	6.94%	-2.78%	-5.76%	2.32%	11.44%	12.85%	249.55%	106.46%
15	13.54%	34.40%	2.21%	34.73%	4.34%	81.88%	0.79%	307.19%	159.40%
16	21.85%	38.65%	13.10%	39.12%	23.93%	51.02%	81.82%	463.39%	167.11%
17	17.19%	18.71%	3.17%	44.94%	32.91%	75.27%	44.20%	277.63%	139.78%
18	6.24%	30.46%	-7.35%	25.89%	48.31%	29.97%	6.92%	199.74%	120.78%
19	17.28%	20.98%	-9.37%	37.43%	20.51%	27.20%	104.38%	240.22%	82.12%
20	9.48%	32.66%	-6.60%	59.33%	15.61%	40.80%	36.19%	312.90%	130.37%
21	10.24%	22.33%	-0.61%	30.79%	20.93%	40.51%	39.74%	283.27%	133.15%
22	26.58%	54.96%	17.11%	41.81%	41.36%	54.70%	39.86%	290.66%	202.56%
23	10.76%	37.31%	3.91%	24.04%	5.26%	64.51%	5.95%	301.15%	156.12%
24	8.89%	-6.17%	12.57%	28.98%	-8.67%	65.39%	42.42%	235.25%	129.89%
25	9.38%	25.33%	-0.70%	38.14%	16.91%	48.87%	41.04%	264.43%	143.15%
26	10.93%	7.11%	-0.66%	32.30%	8.11%	105.69%	11.83%	193.00%	112.61%

27	15.89%	11.48%	12.20%	22.12%	19.61%	28.58%	91.06%	260.94%	92.32%
28	5.72%	13.71%	-3.35%	41.58%	2.16%	34.56%	9.43%	303.03%	159.01%
29	10.84%	13.06%	-12.82%	36.53%	25.63%	50.42%	73.37%	177.85%	71.75%
30	11.36%	9.83%	-5.61%	63.77%	7.52%	39.89%	21.79%	293.35%	78.30%

<sup>1</sup>American Indian and Alaska Native Alone, Not Latino

<sup>2</sup>Native Hawaiian and Pacific Islander Alone, Not Latino

## Variable definitions

District shapefiles were retrieved from the Redistricting Data Hub, All About Redistricting, and the U.S. Census. The list of variables below can be found in the P1 and P2 table of the PL 94-171. Data was retrieved from the Redistricting Data Hub processed legacy file of the PL 94-171.

Variable Name in Report	Census Variable Reference
Total Population	P0010001
Hispanic or Latino Origin	P0020002
White Alone, not Latino	P0020005
African American Alone, not Latino	P0020006
American Indian and Alaska Native Alone, not Latino	P0020007
Asian Alone, not Latino	P0020008
Native Hawaiian and Pacific Islander Alone, not Latino	P0020009
Other Alone, not Latino	P0020010
Two or More, not Latino	P0020011